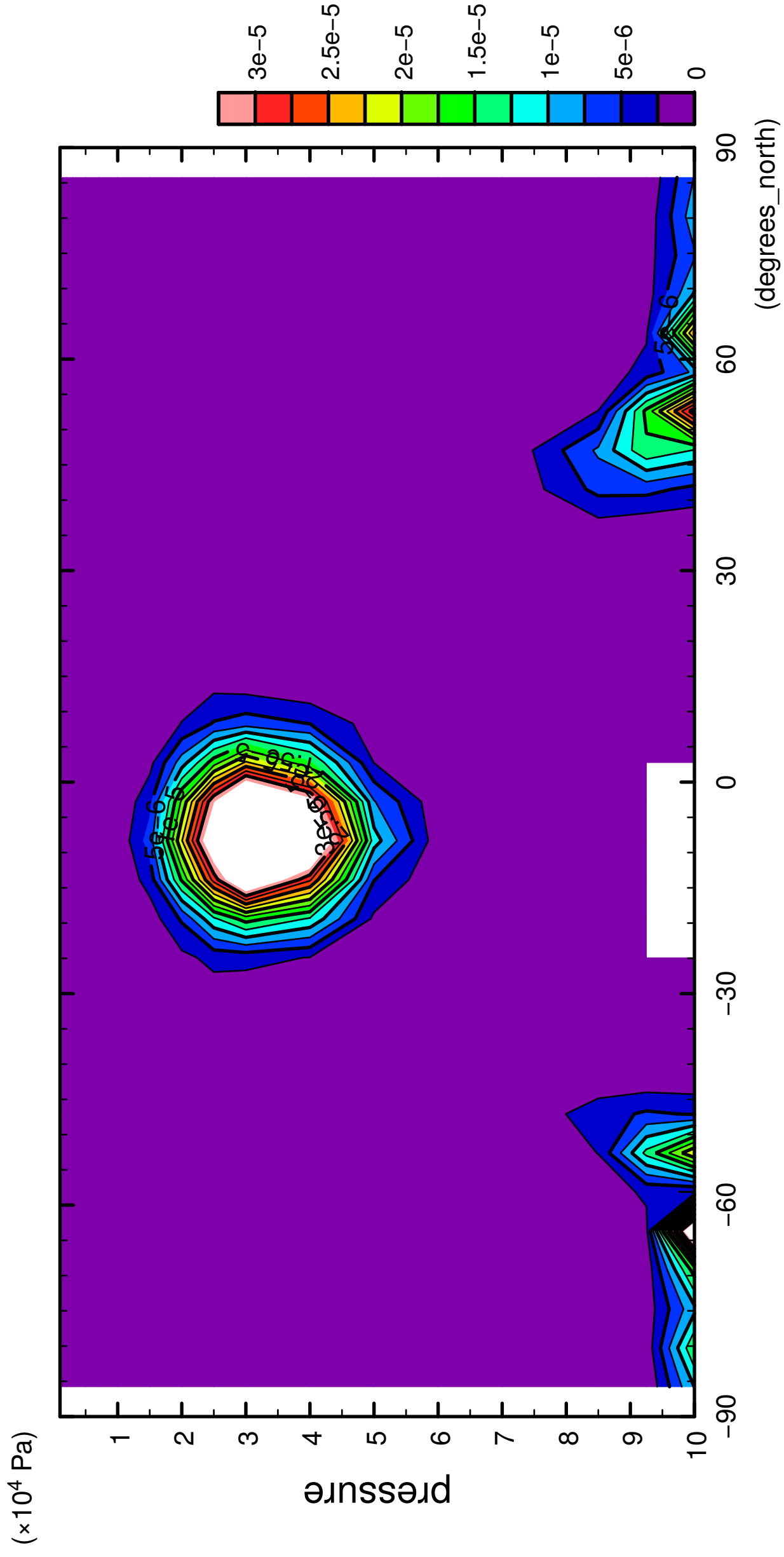


1/12

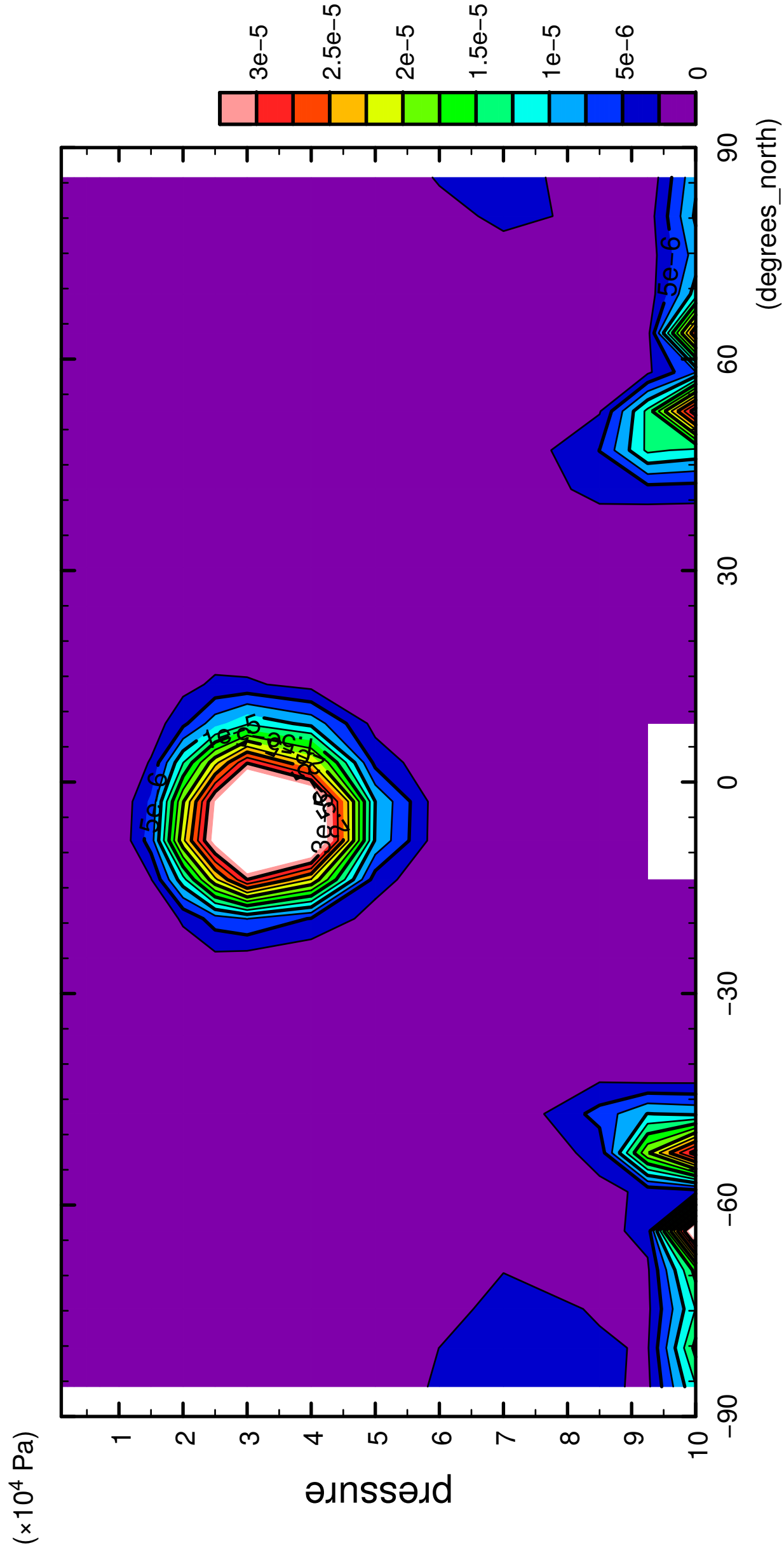
QH2OSol



CONTOUR INTERVAL = 2.500E-06

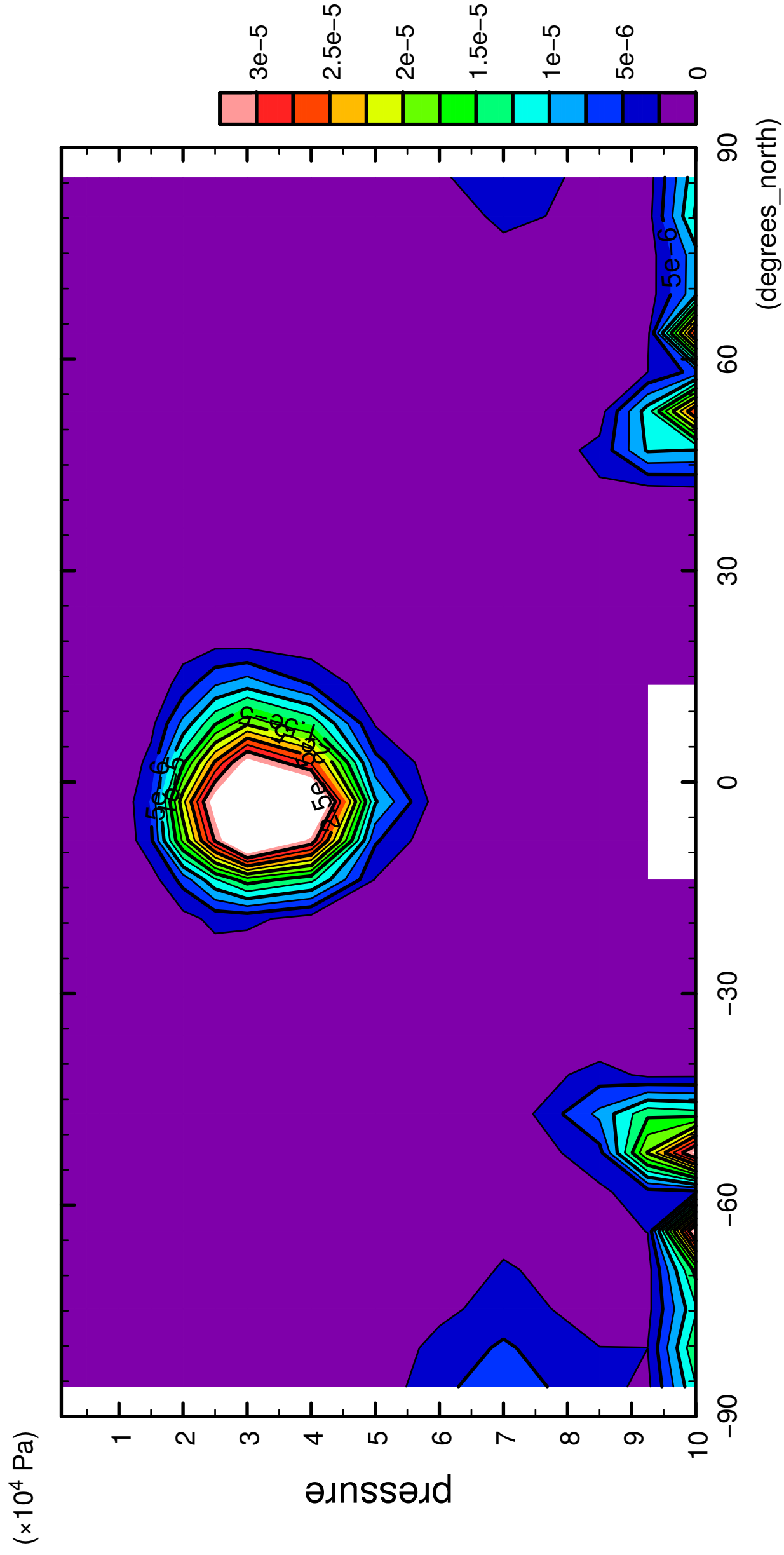
2/12

QH2OSol



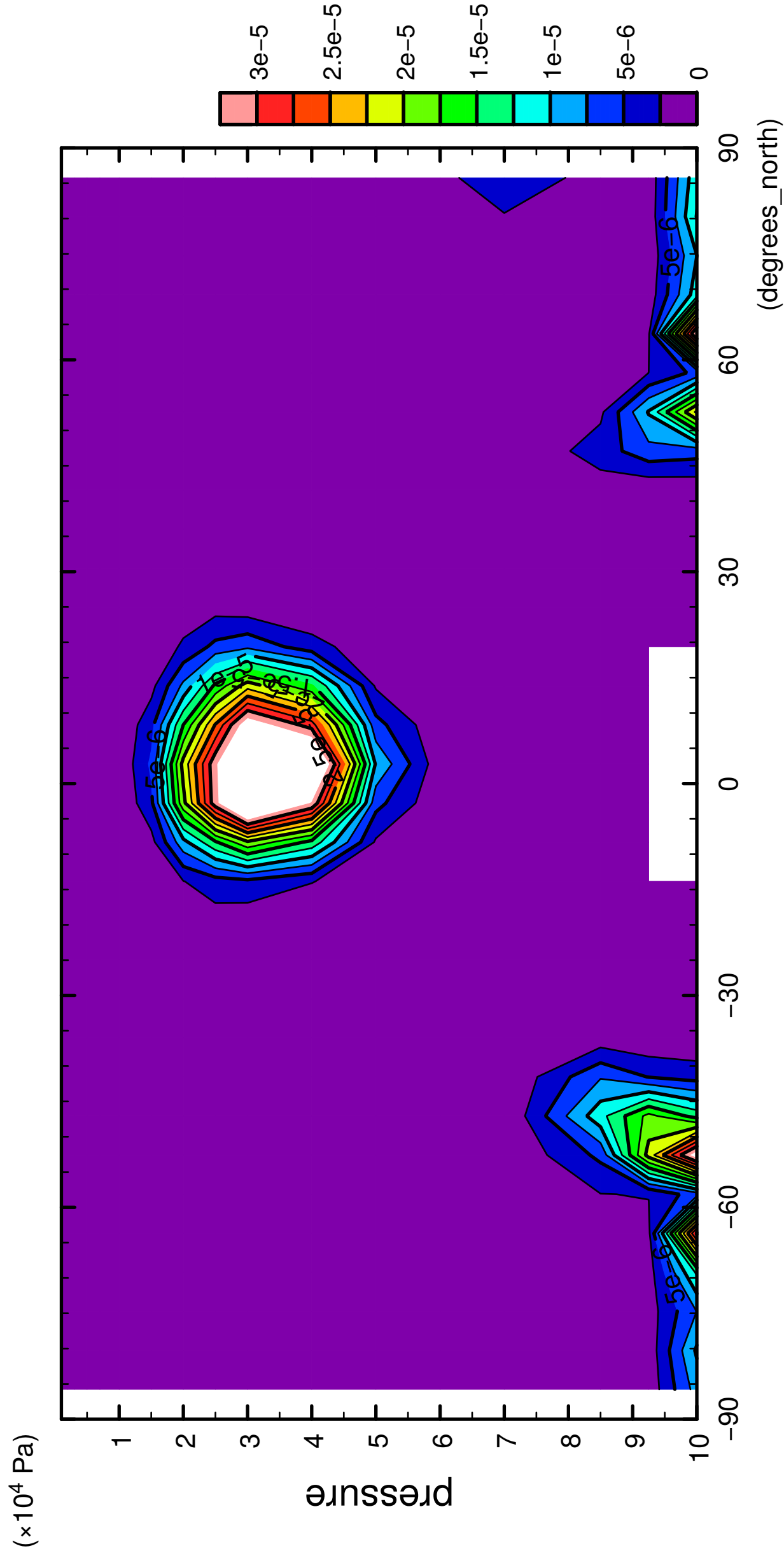
3/12

QH2OSol



4/12

QH2OSol

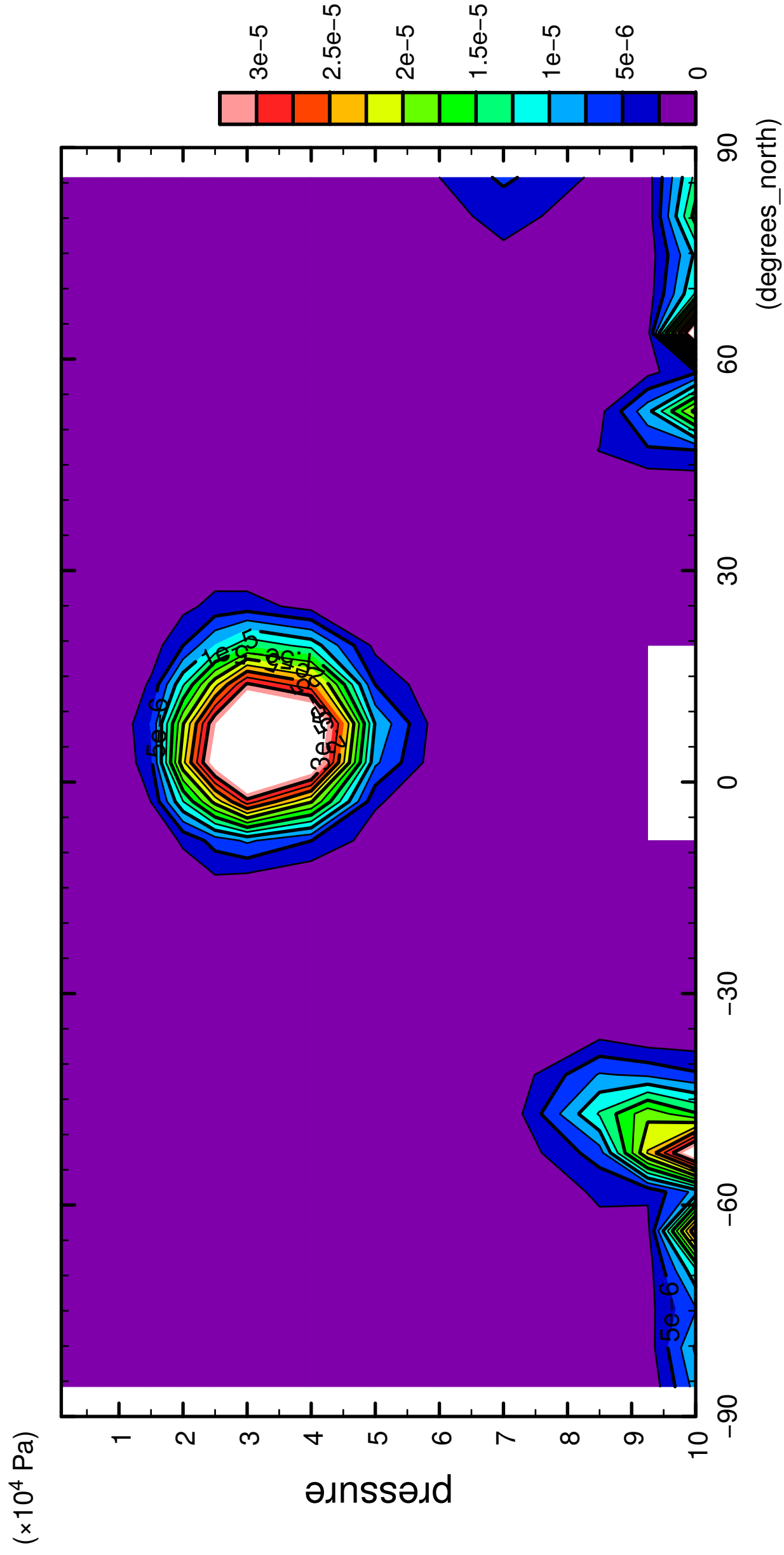


latitude

CONTOUR INTERVAL = 2.500E-06

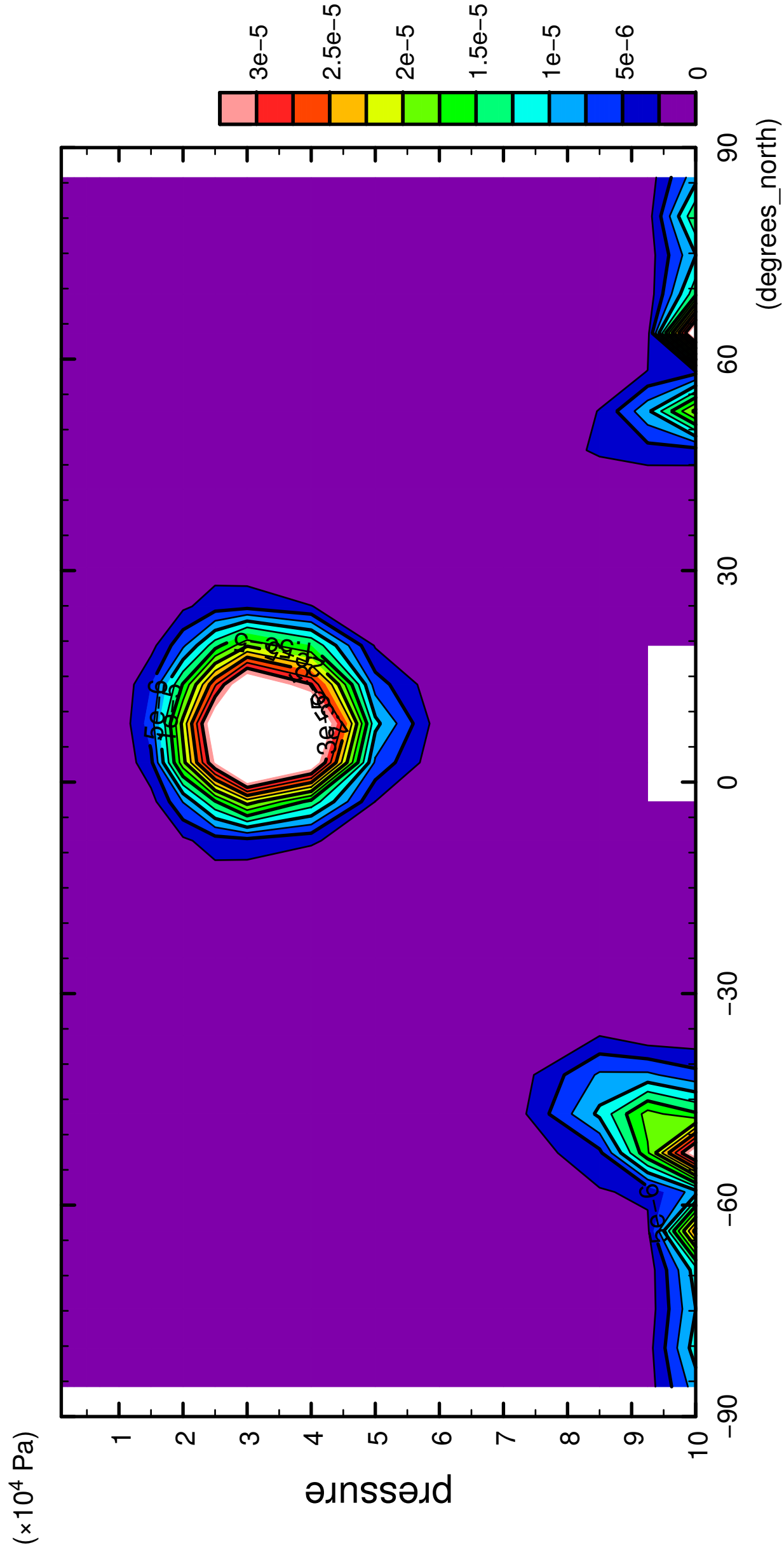
5/12

QH2OSol



6/12

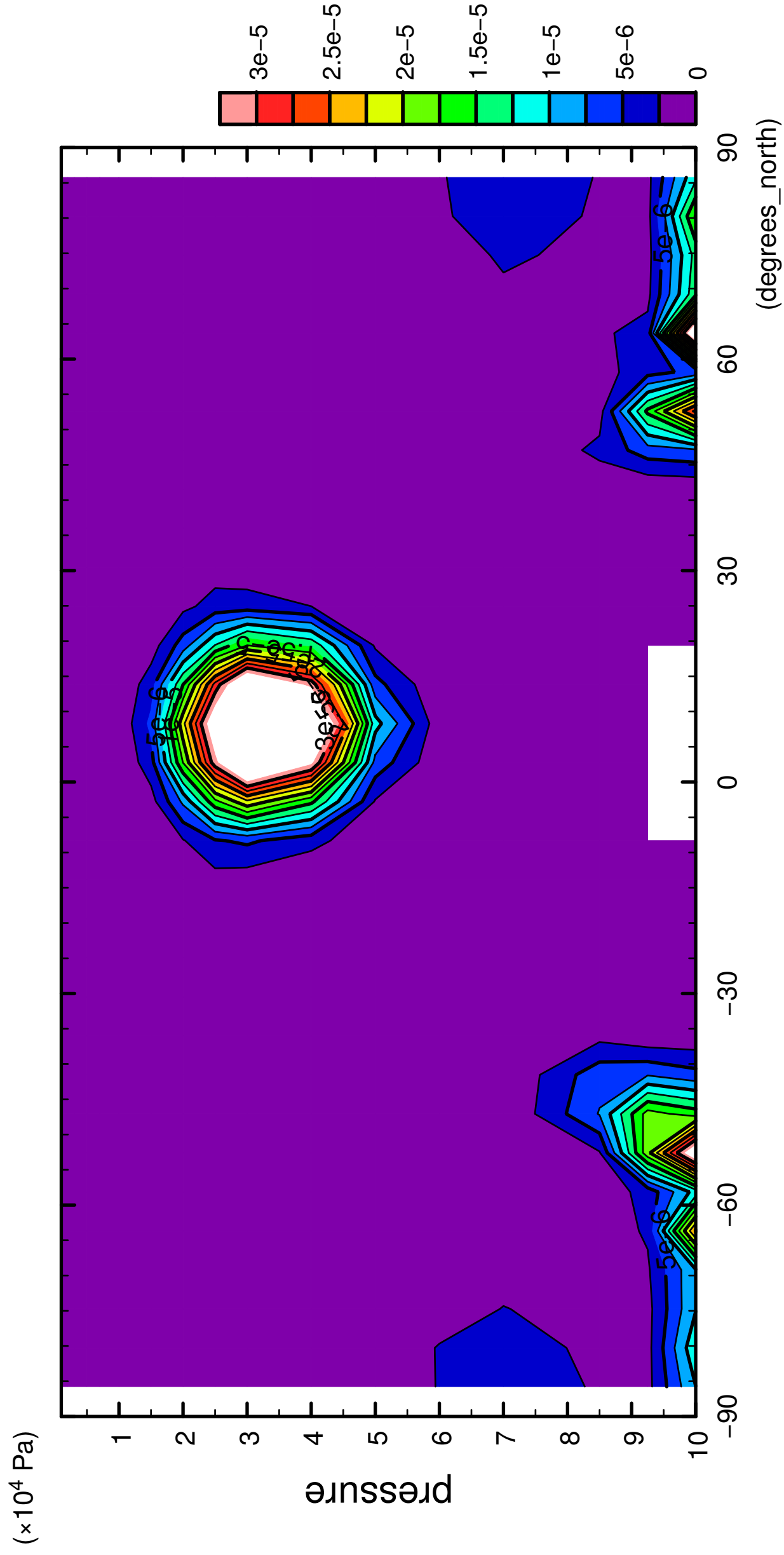
QH2OSol



CONTOUR INTERVAL = 2.500E-06

7/12

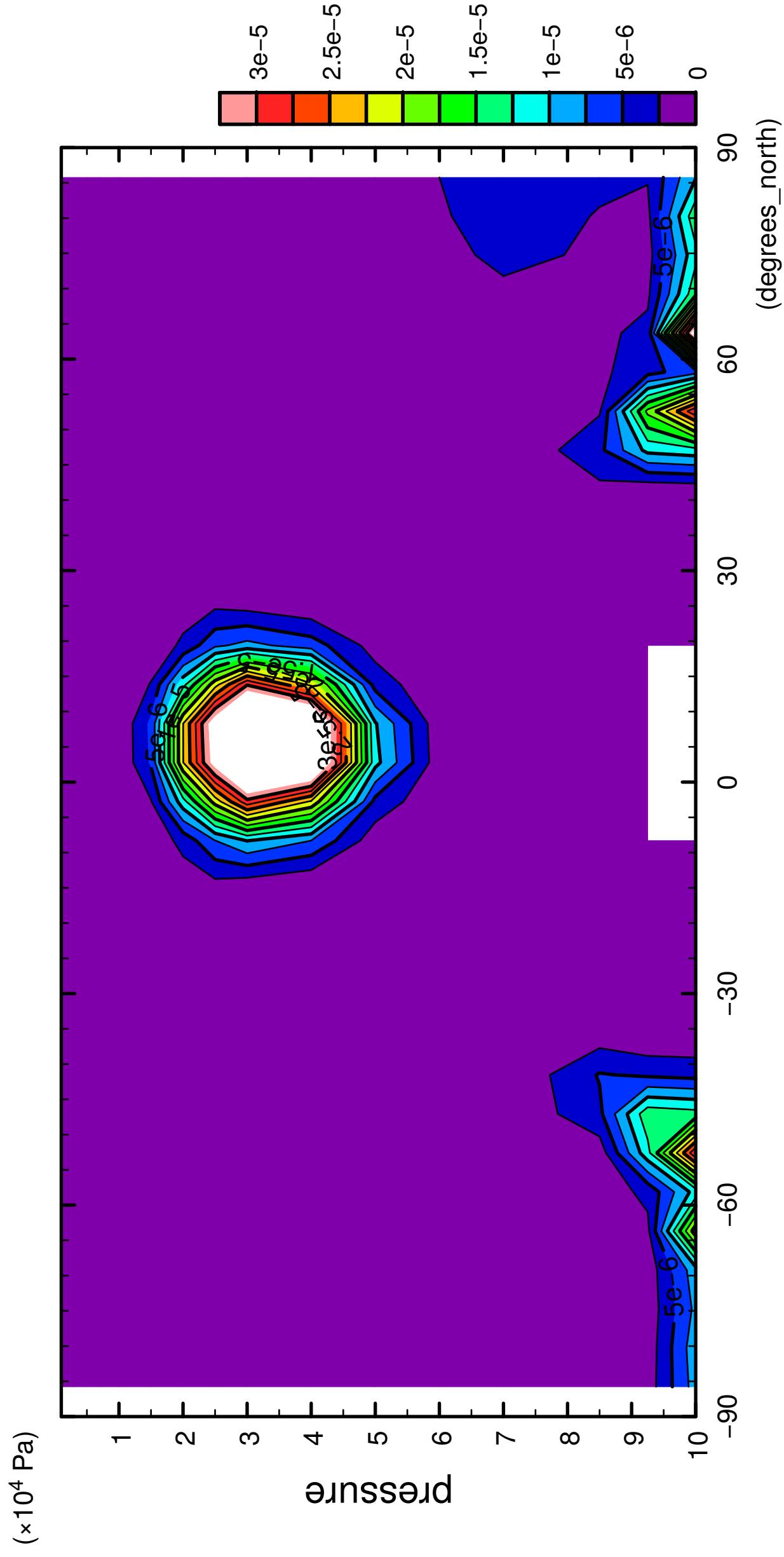
QH2OSol



CONTOUR INTERVAL = 2.500E-06

8/12

QH2OSol

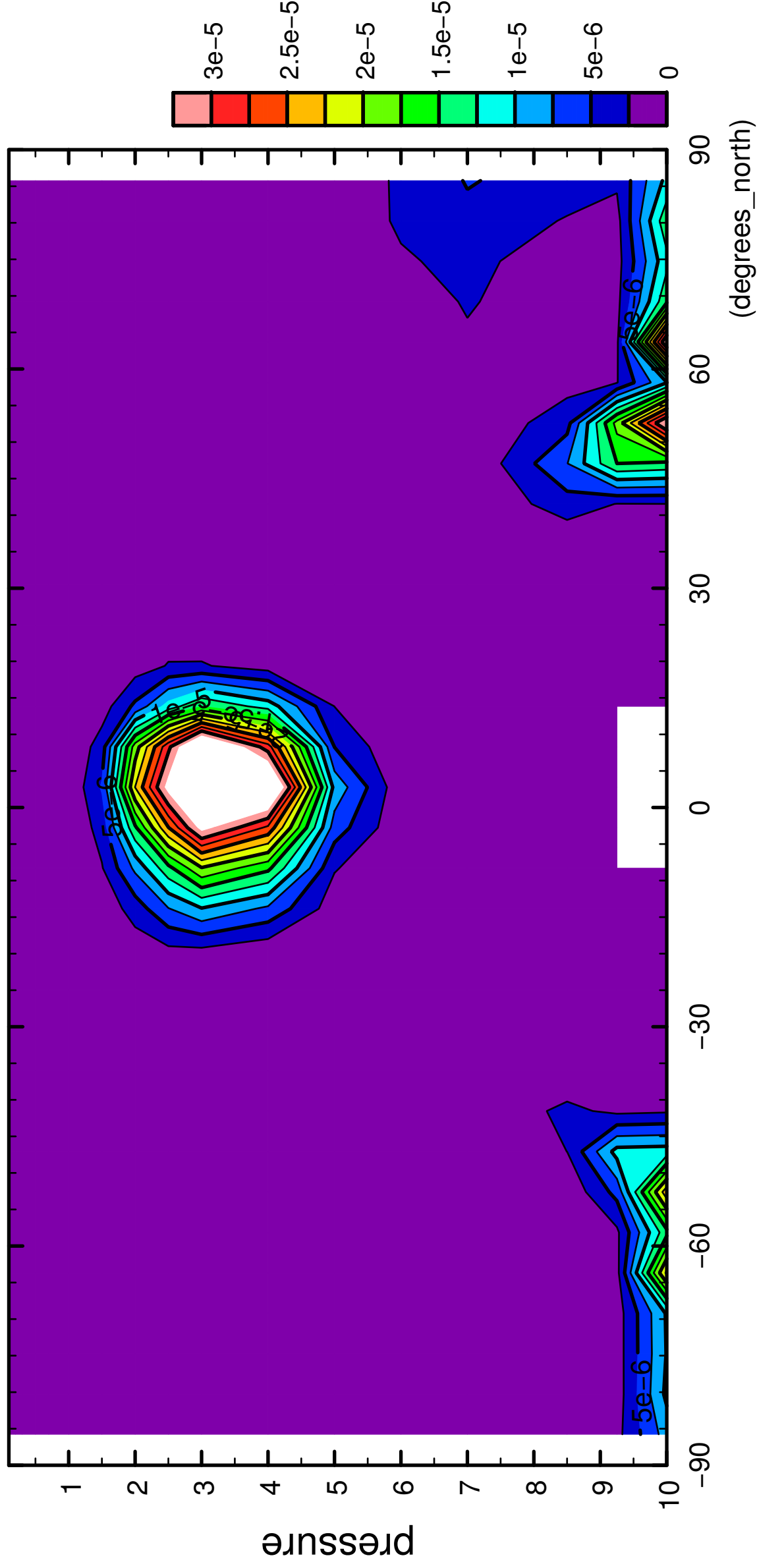


CONTOUR INTERVAL = 2.500E-06

9/12

QH2OSol

($\times 10^4$ Pa)

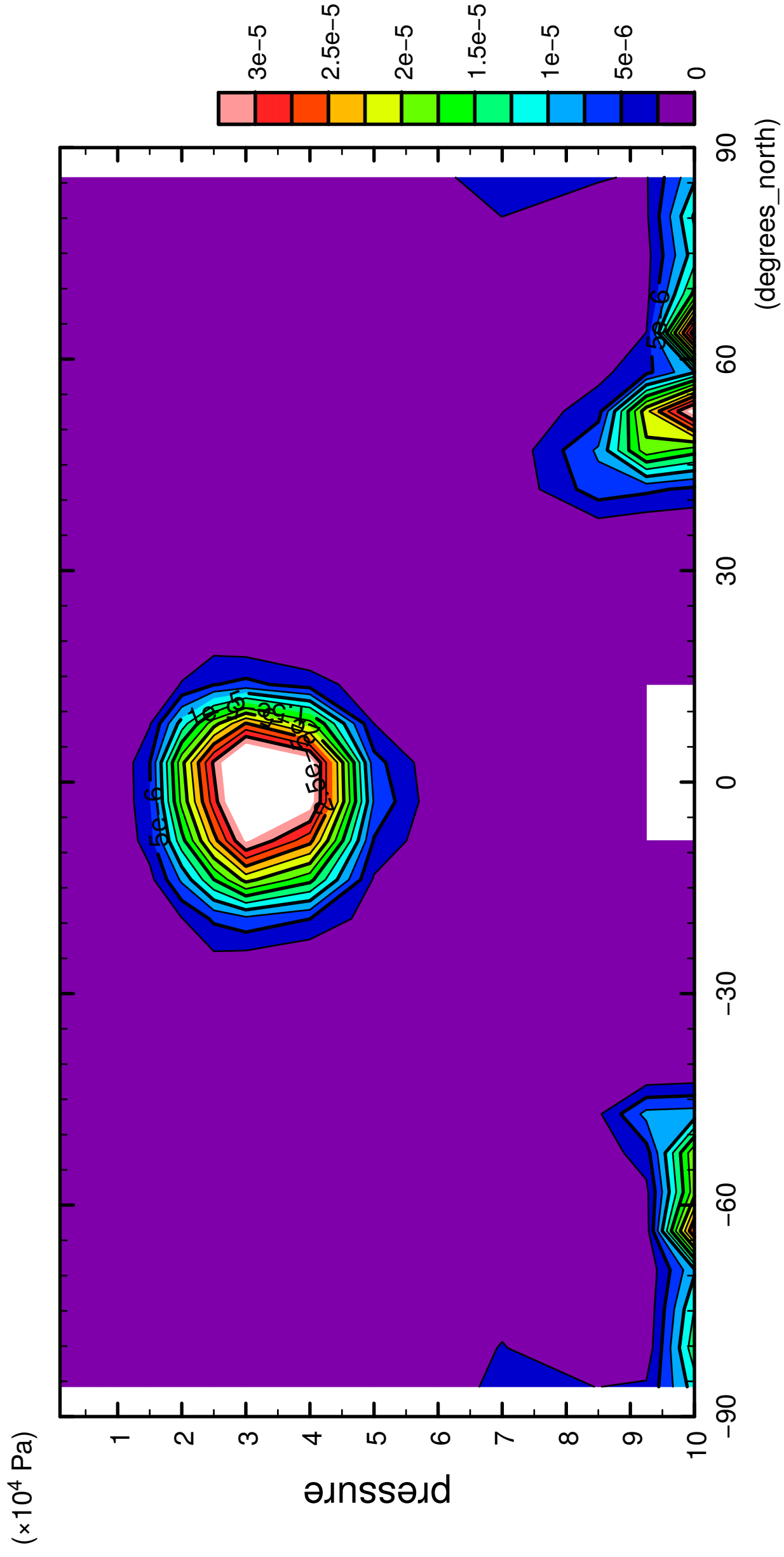


latitude

CONTOUR INTERVAL = 2.500×10^{-6}

10/12

QH2OSol

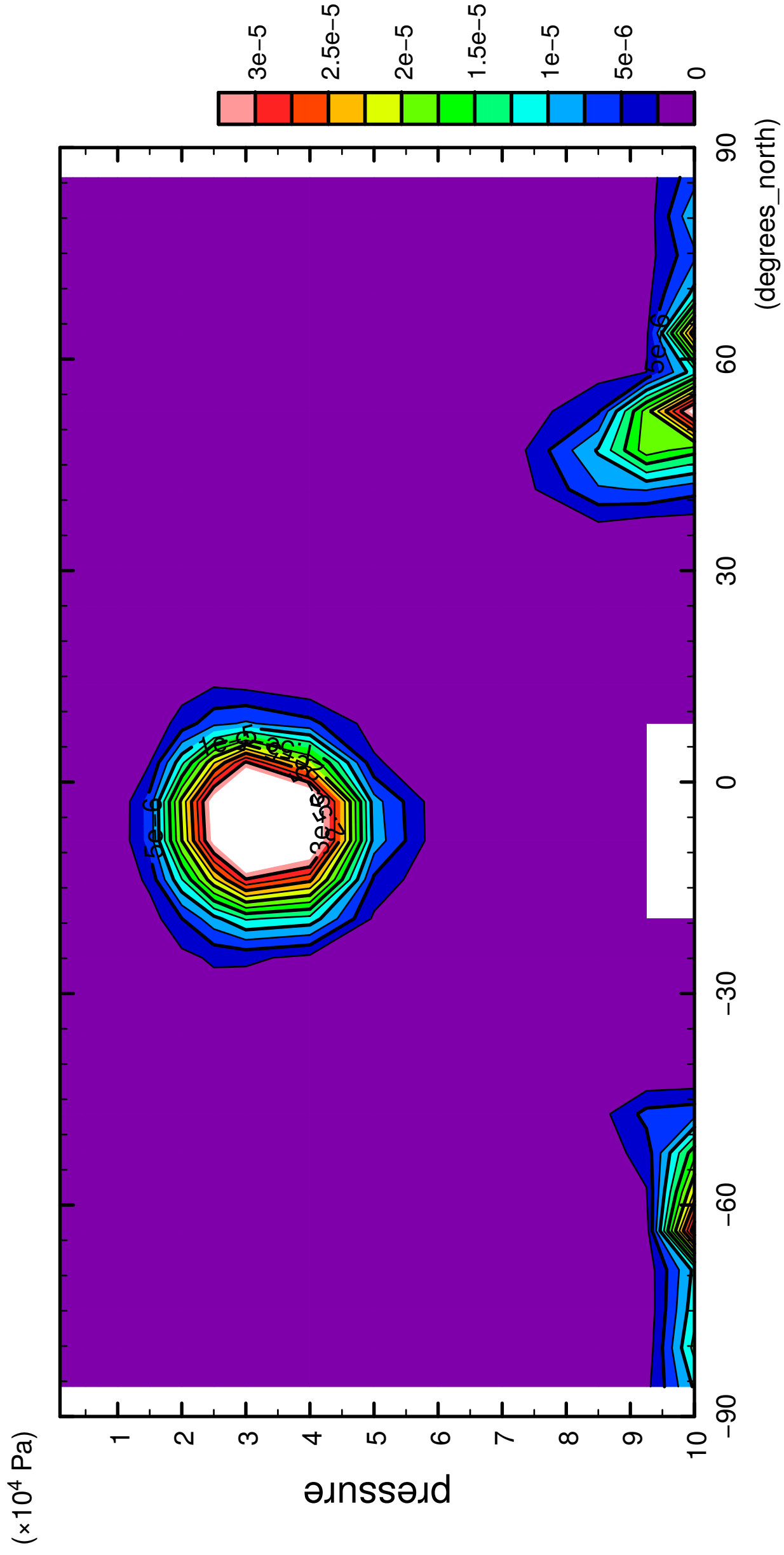


latitude

CONTOUR INTERVAL = 2.500E-06

11/12

QH2OSol

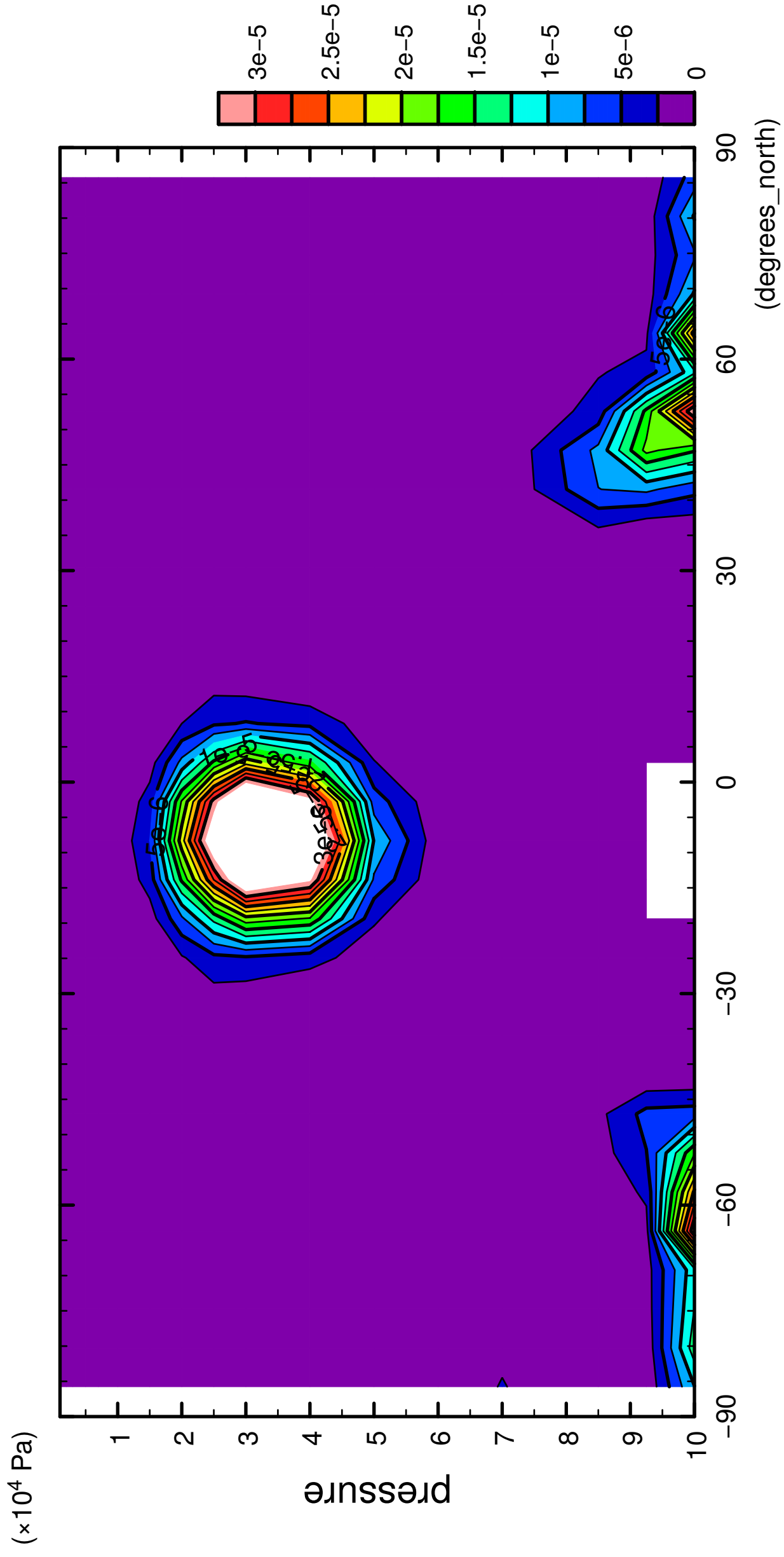


latitude

CONTOUR INTERVAL = 2.500E-06

12/12

QH2OSol



latitude

CONTOUR INTERVAL = 2.500E-06