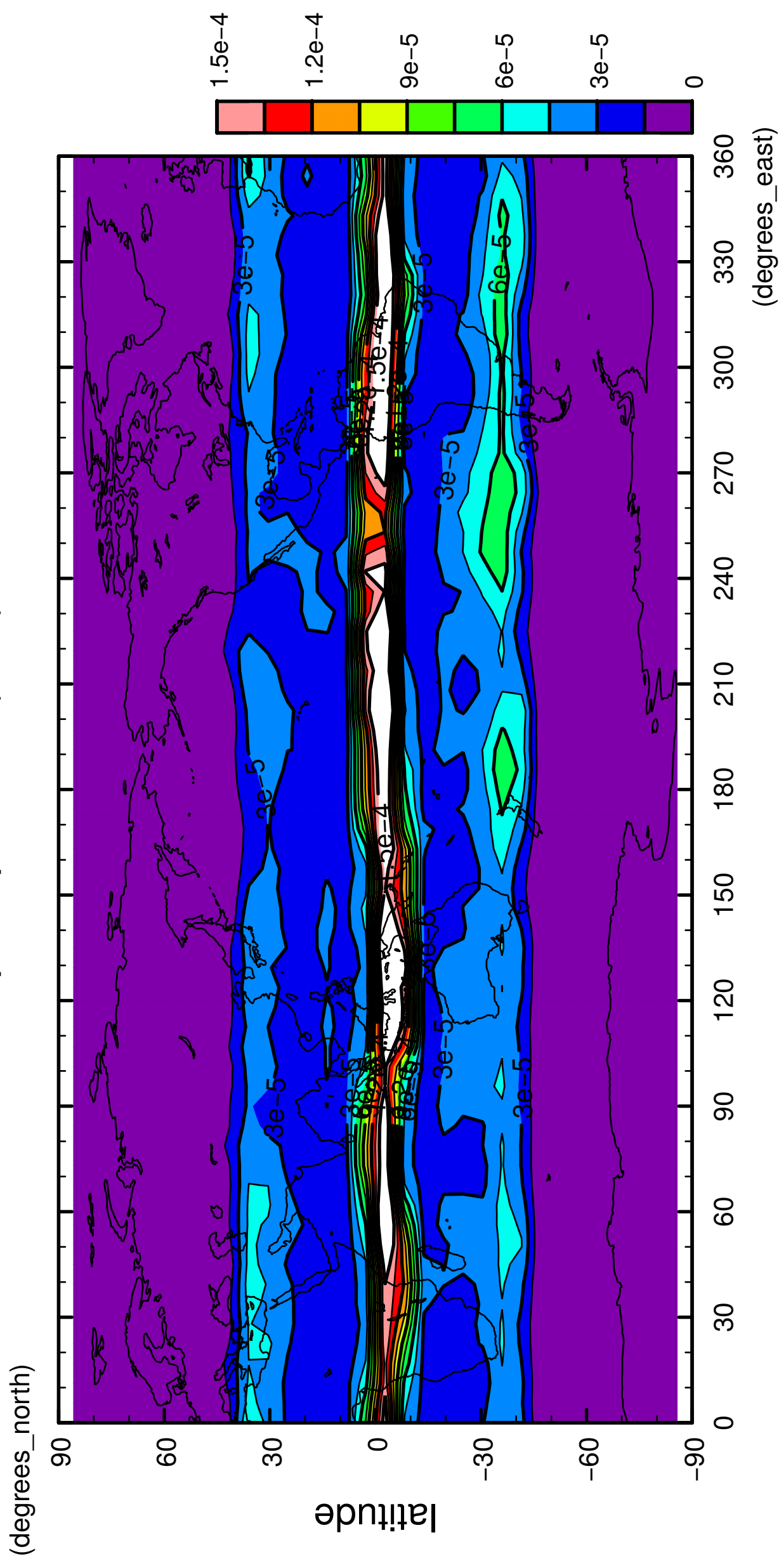


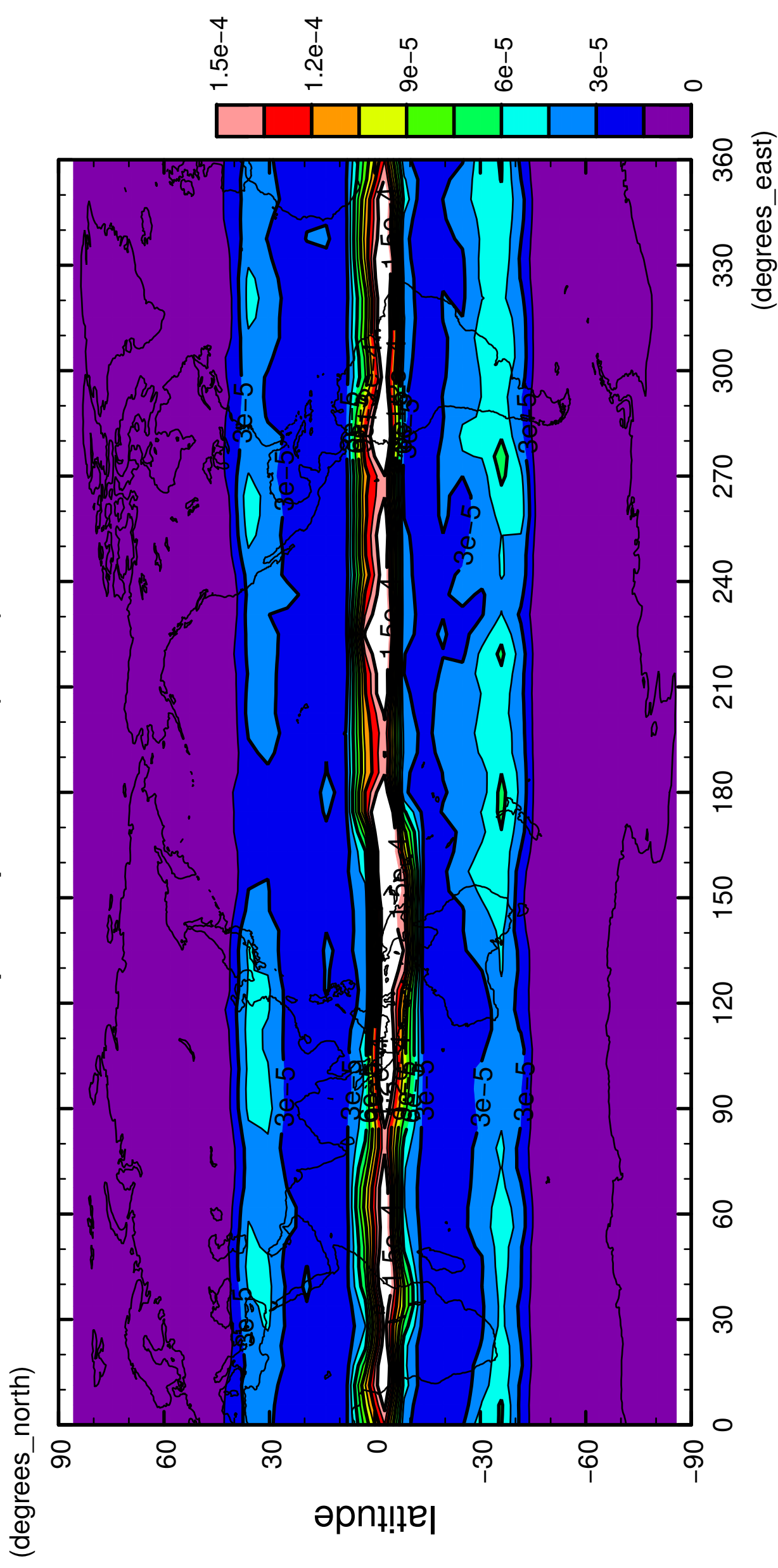
1/12

# precipitation (rain)



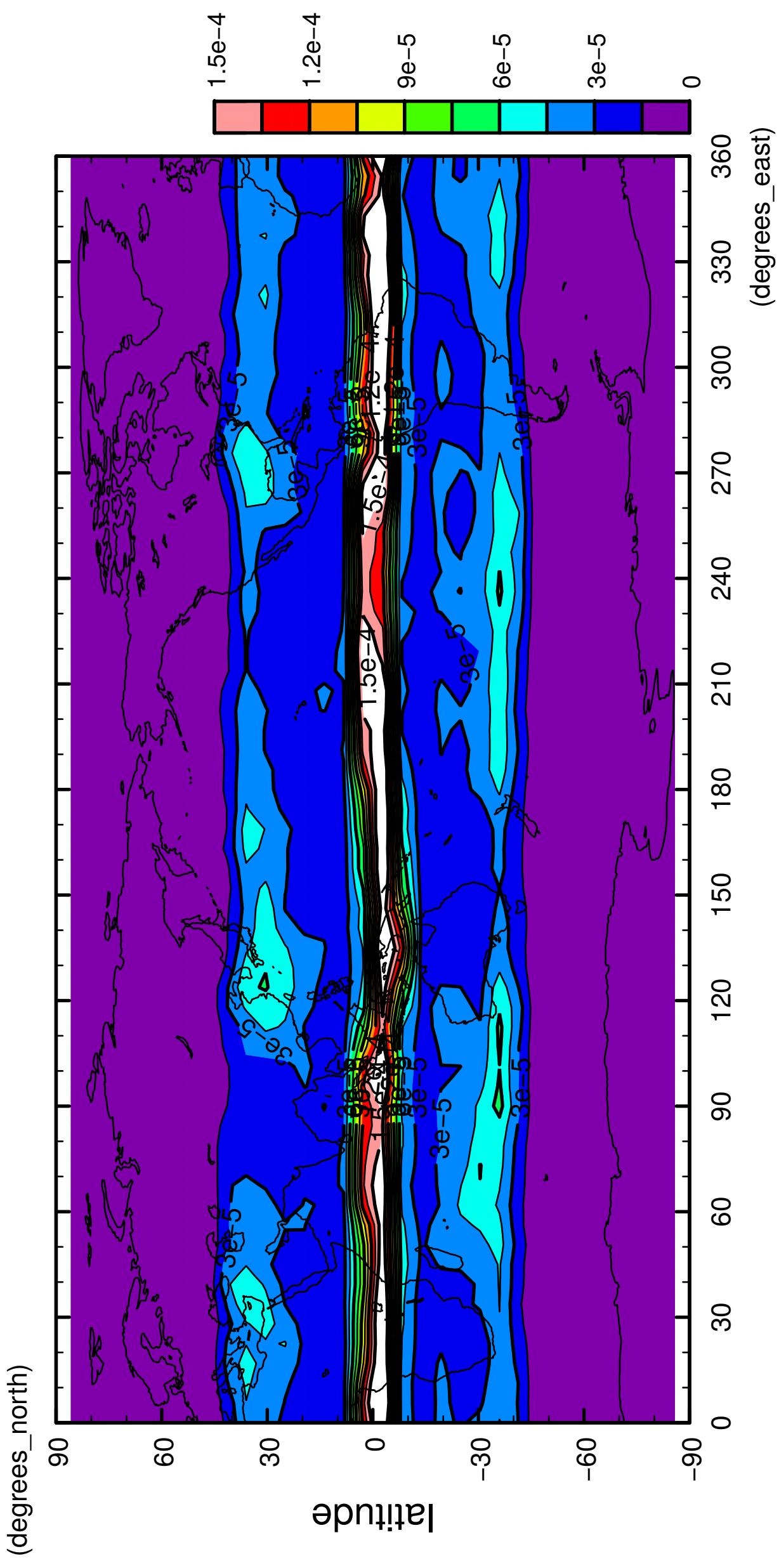
2/12

# precipitation (rain)



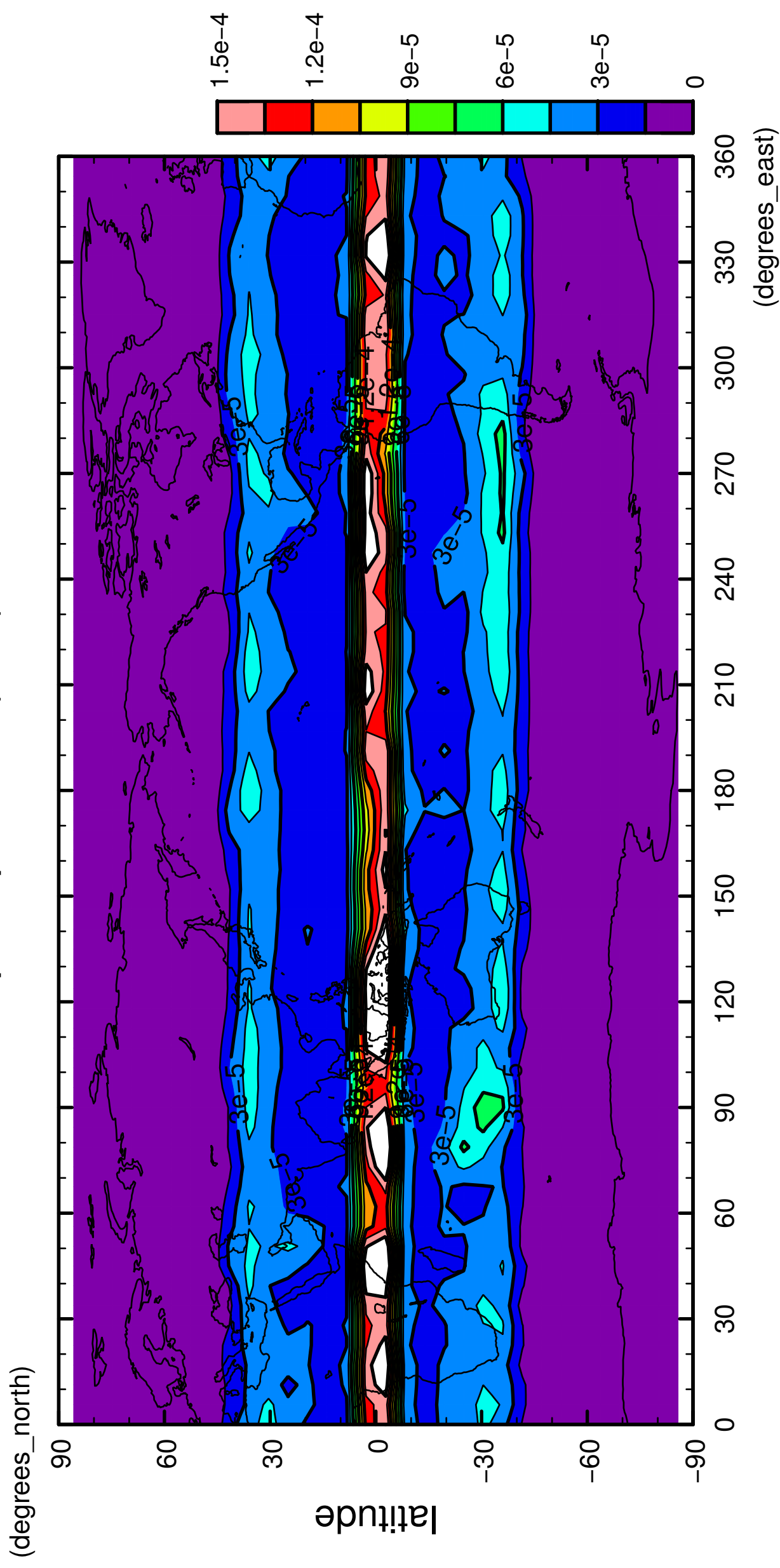
3/12

# precipitation (rain)



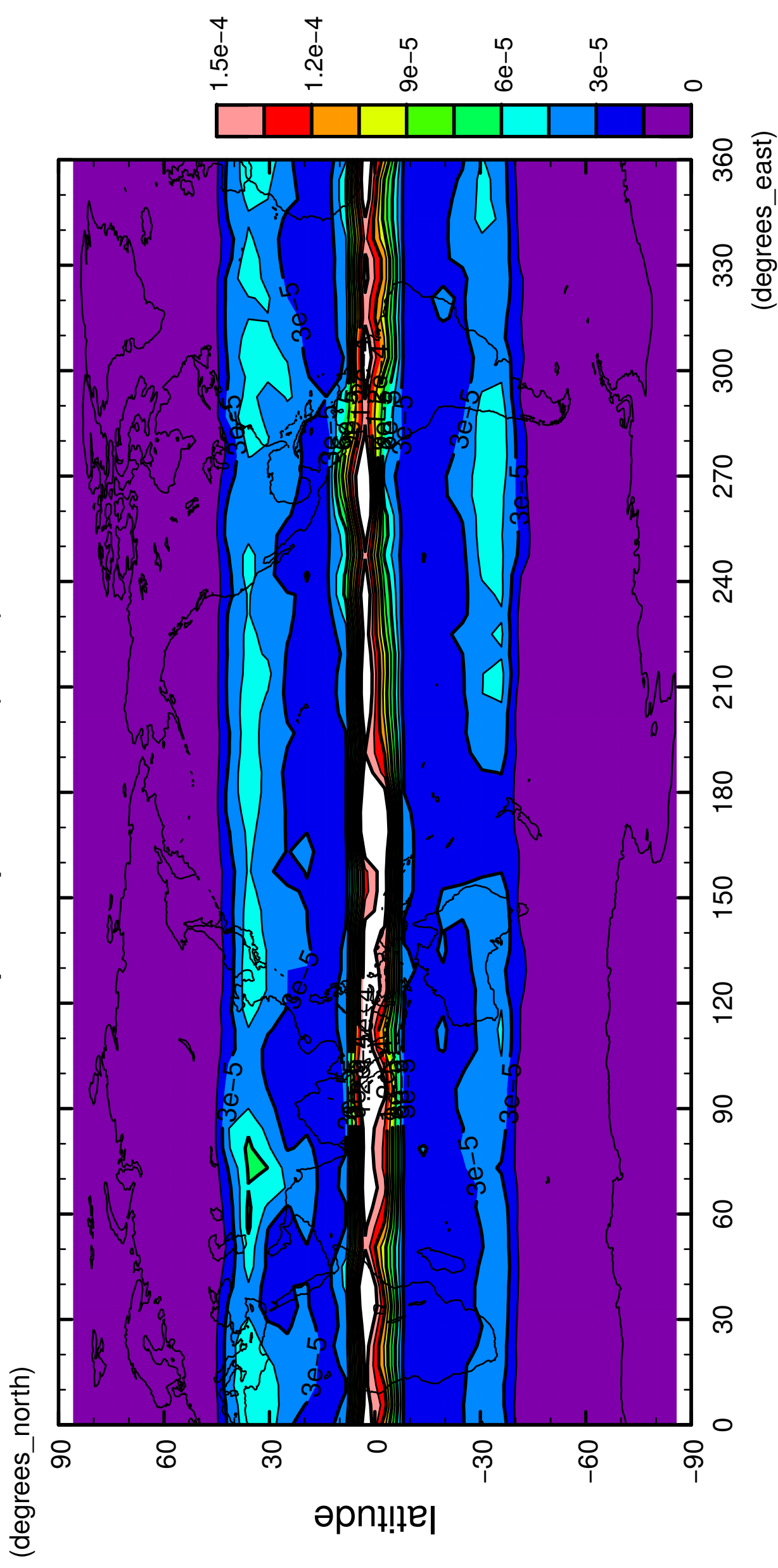
4/12

# precipitation (rain)



5/12

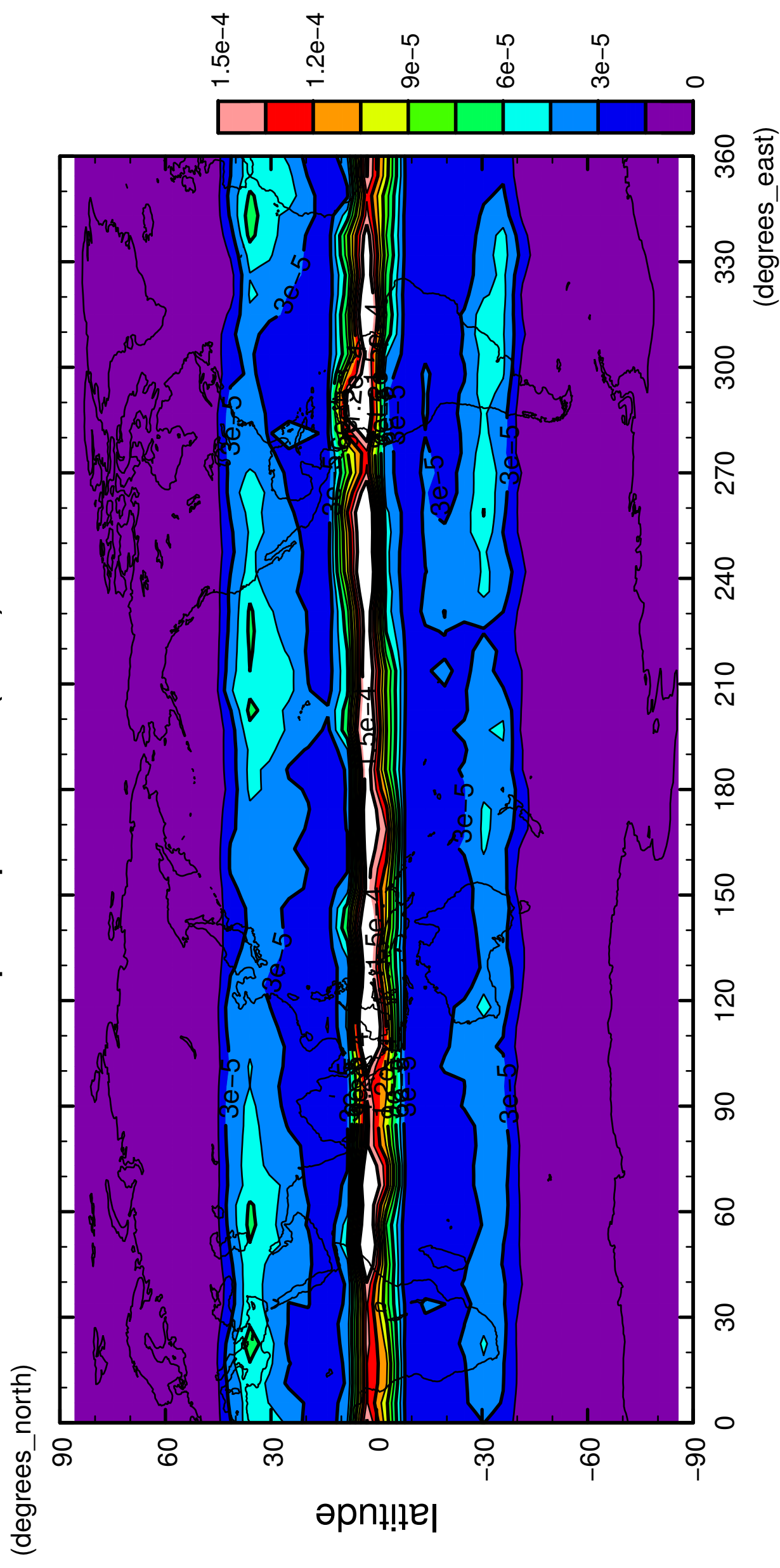
# precipitation (rain)





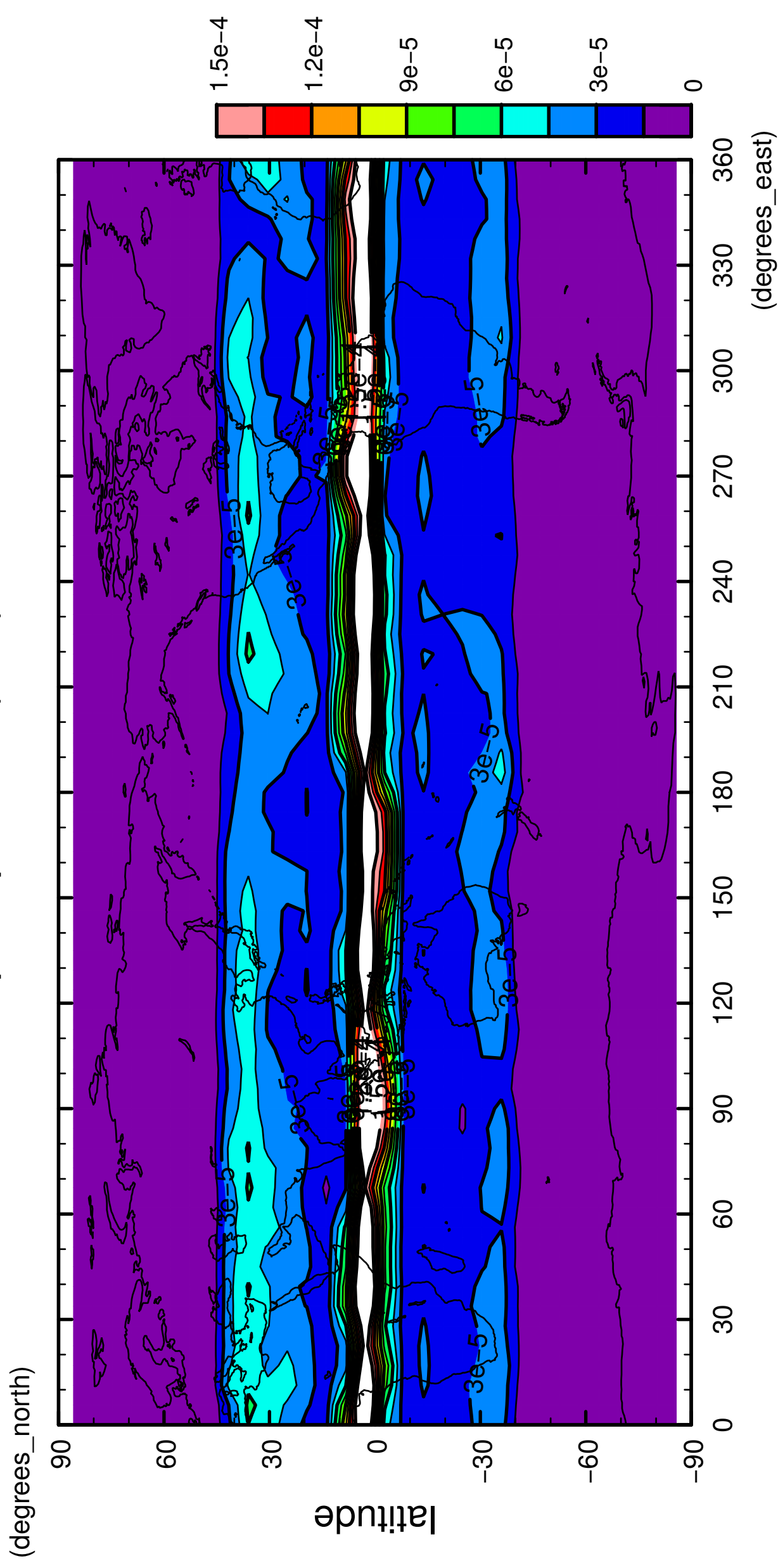
6/12

# precipitation (rain)



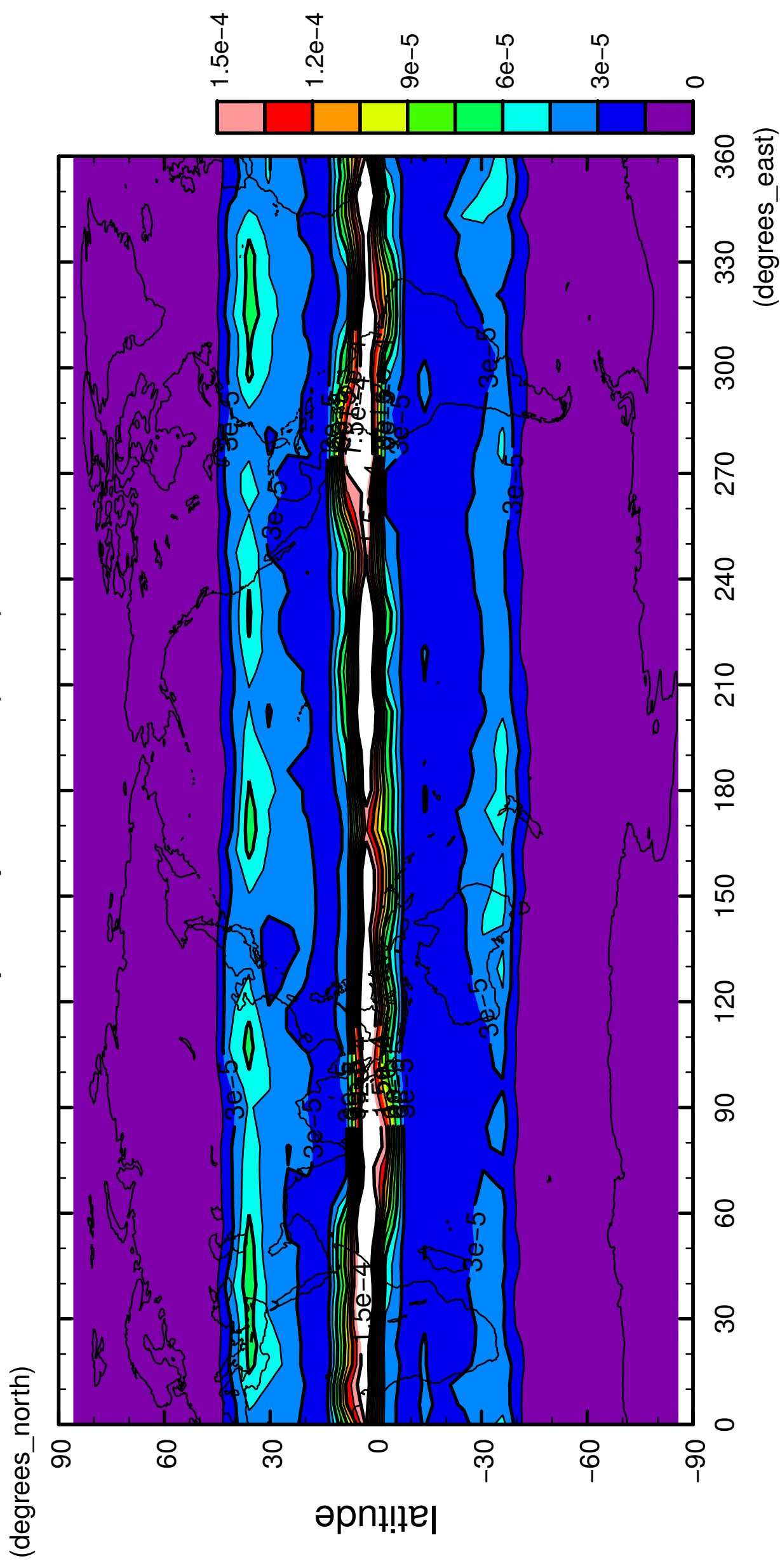
7/12

# precipitation (rain)



8/12

# precipitation (rain)

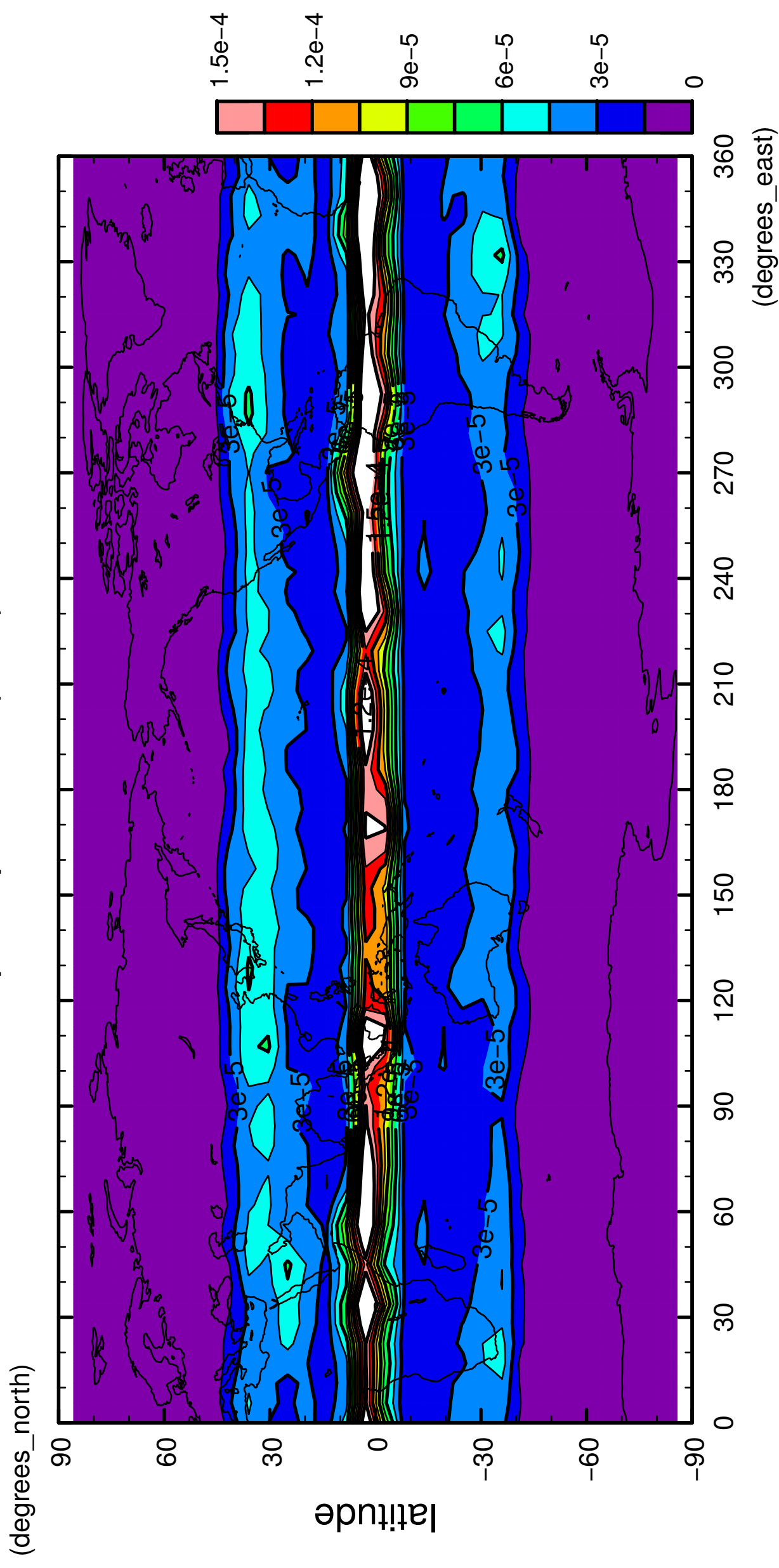


longitude  
CONTOUR INTERVAL = 1.500E-05



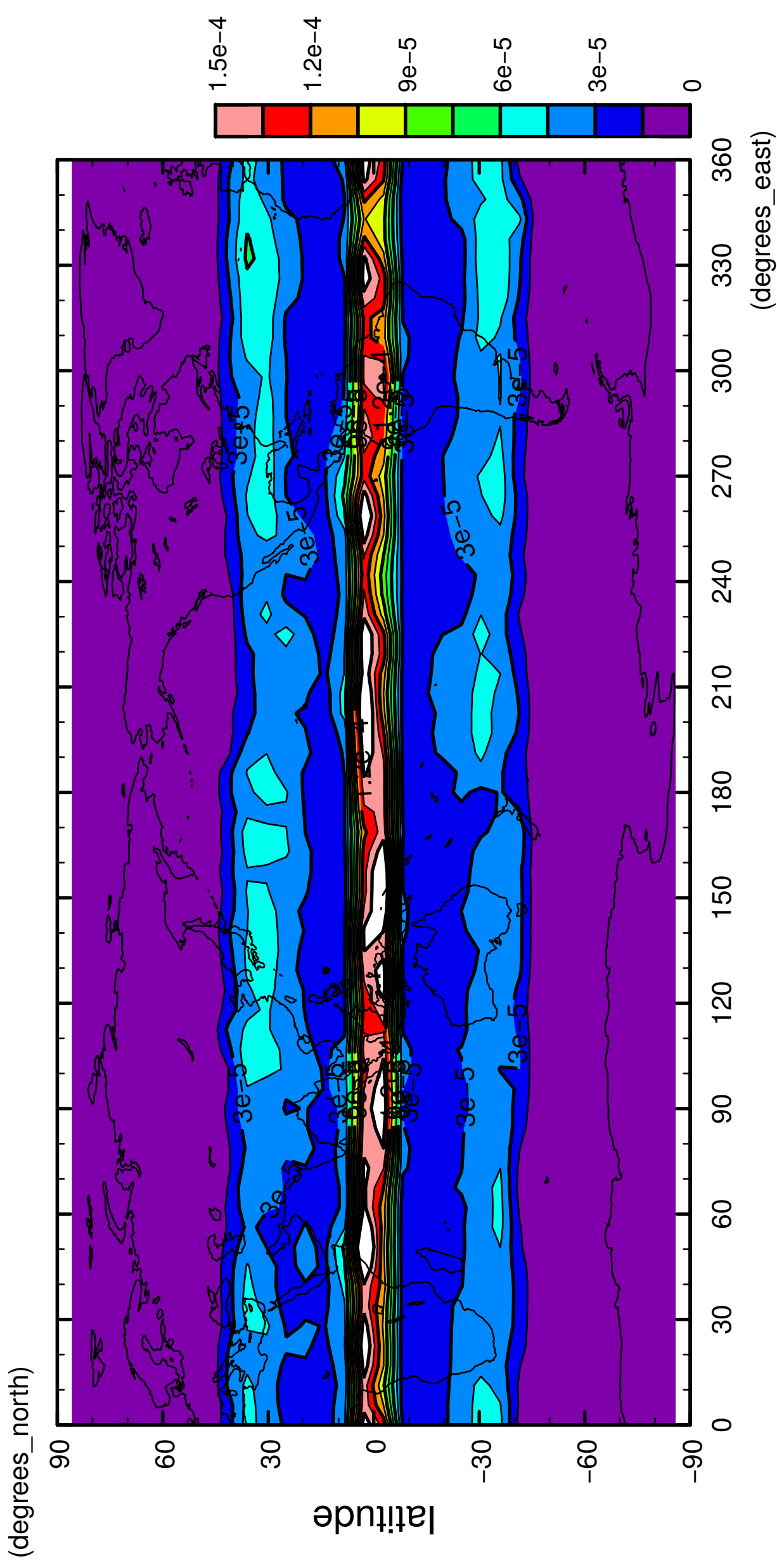
9/12

# precipitation (rain)



10/12

precipitation (rain)

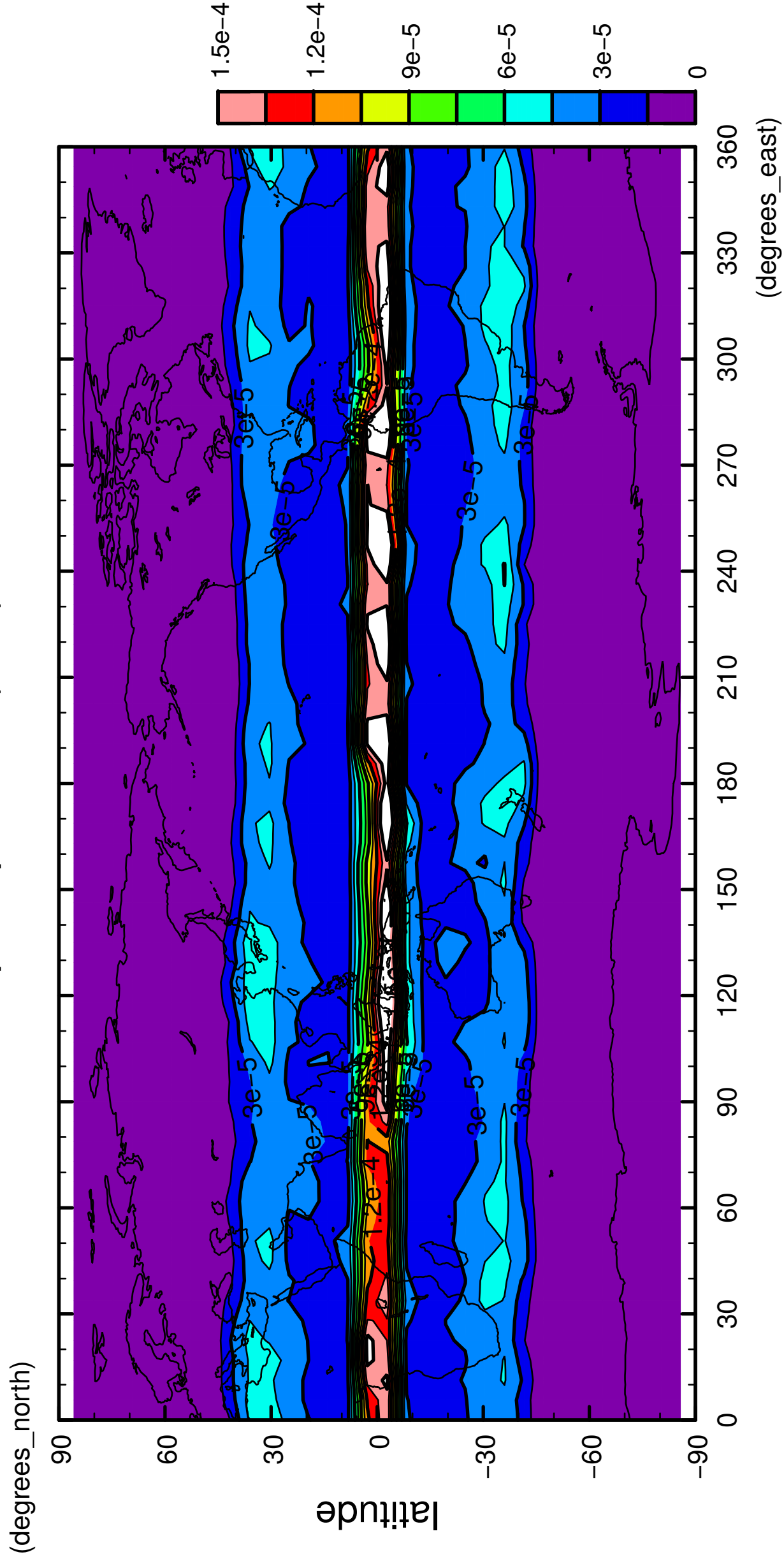


longitude

CONTOUR INTERVAL = 1.500E-05

11/12

precipitation (rain)



longitude

CONTOUR INTERVAL = 1.500E-05

12/12

# precipitation (rain)

