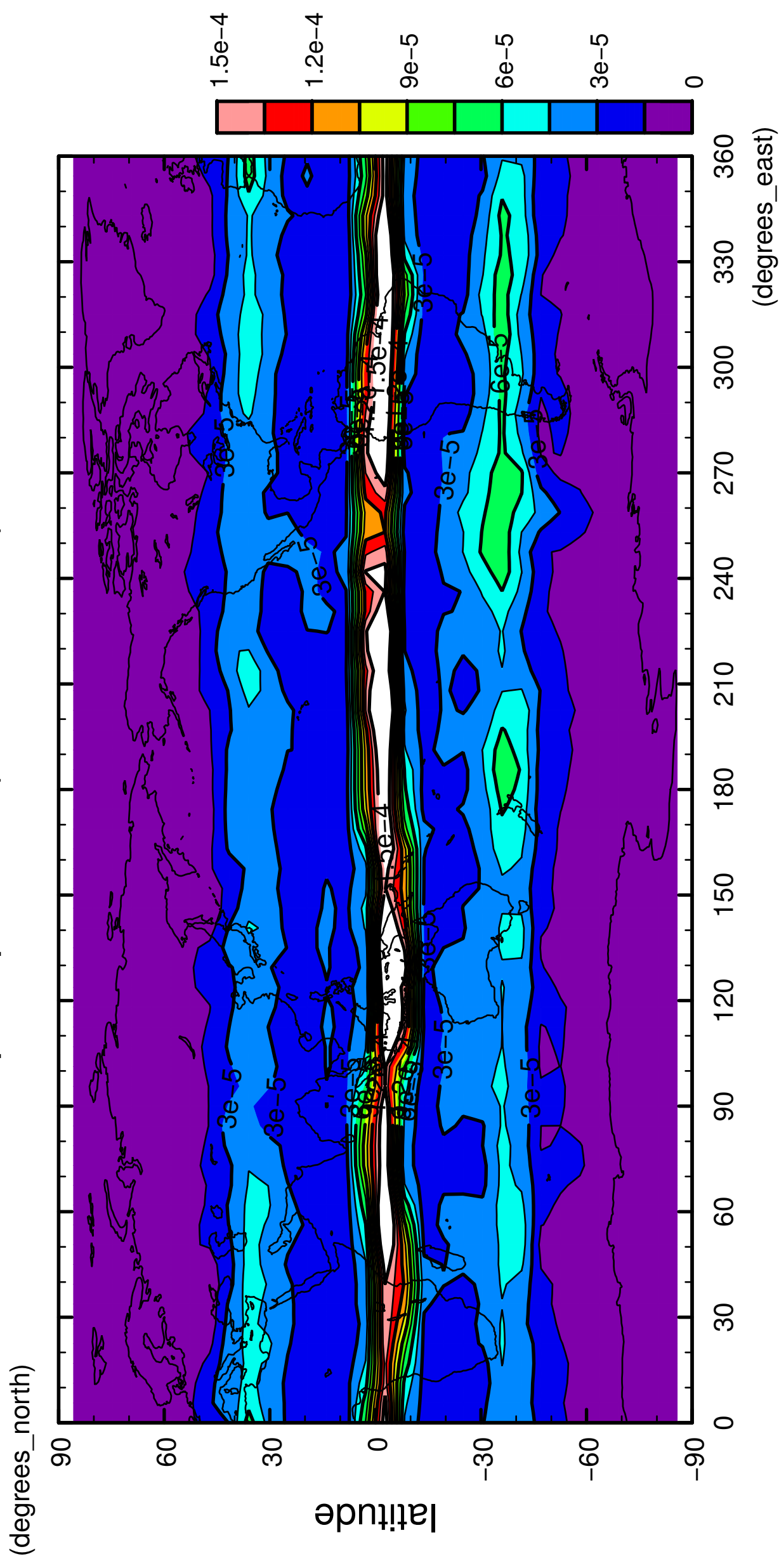


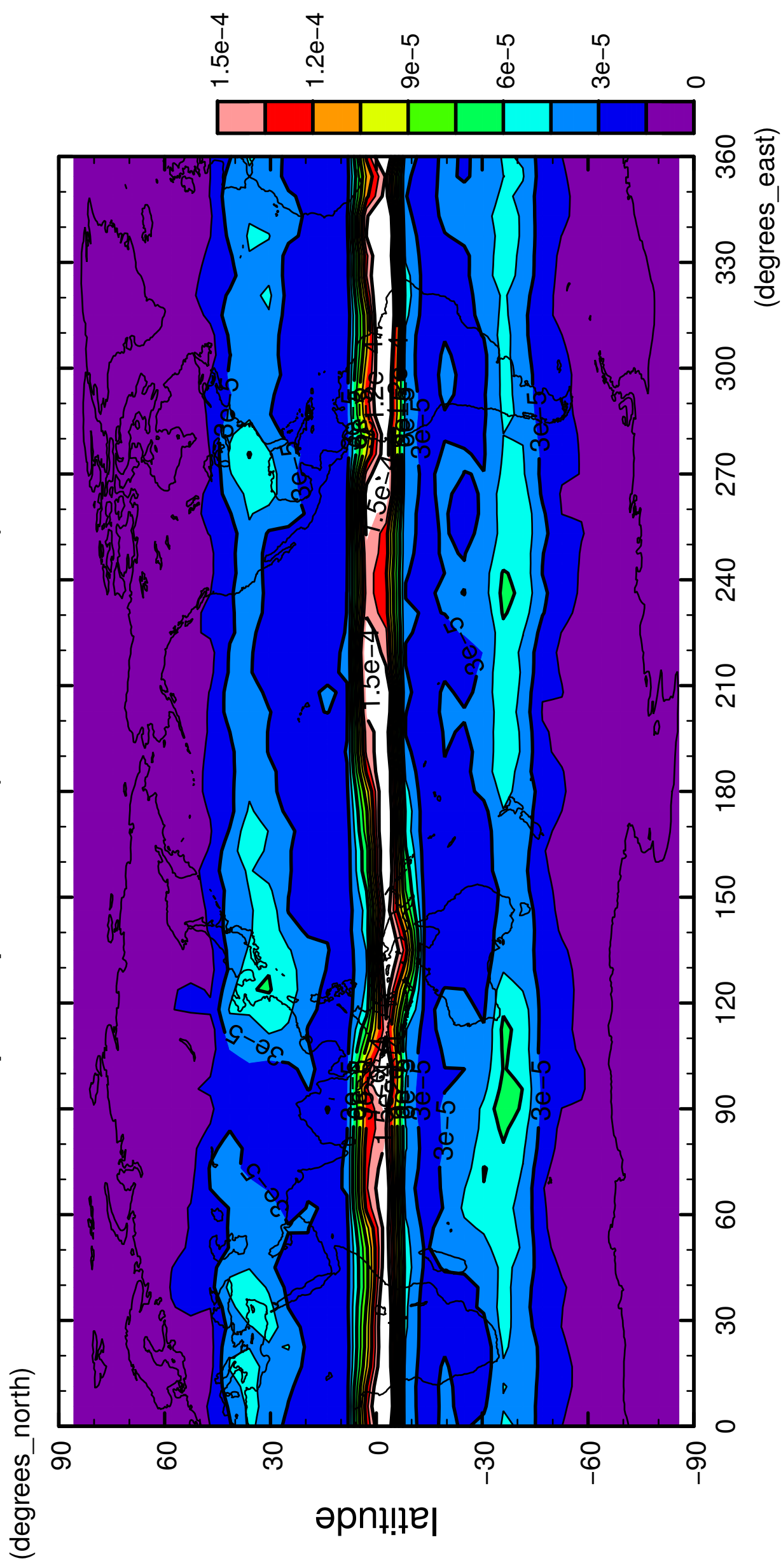
1/12

precipitation (rain + snow)



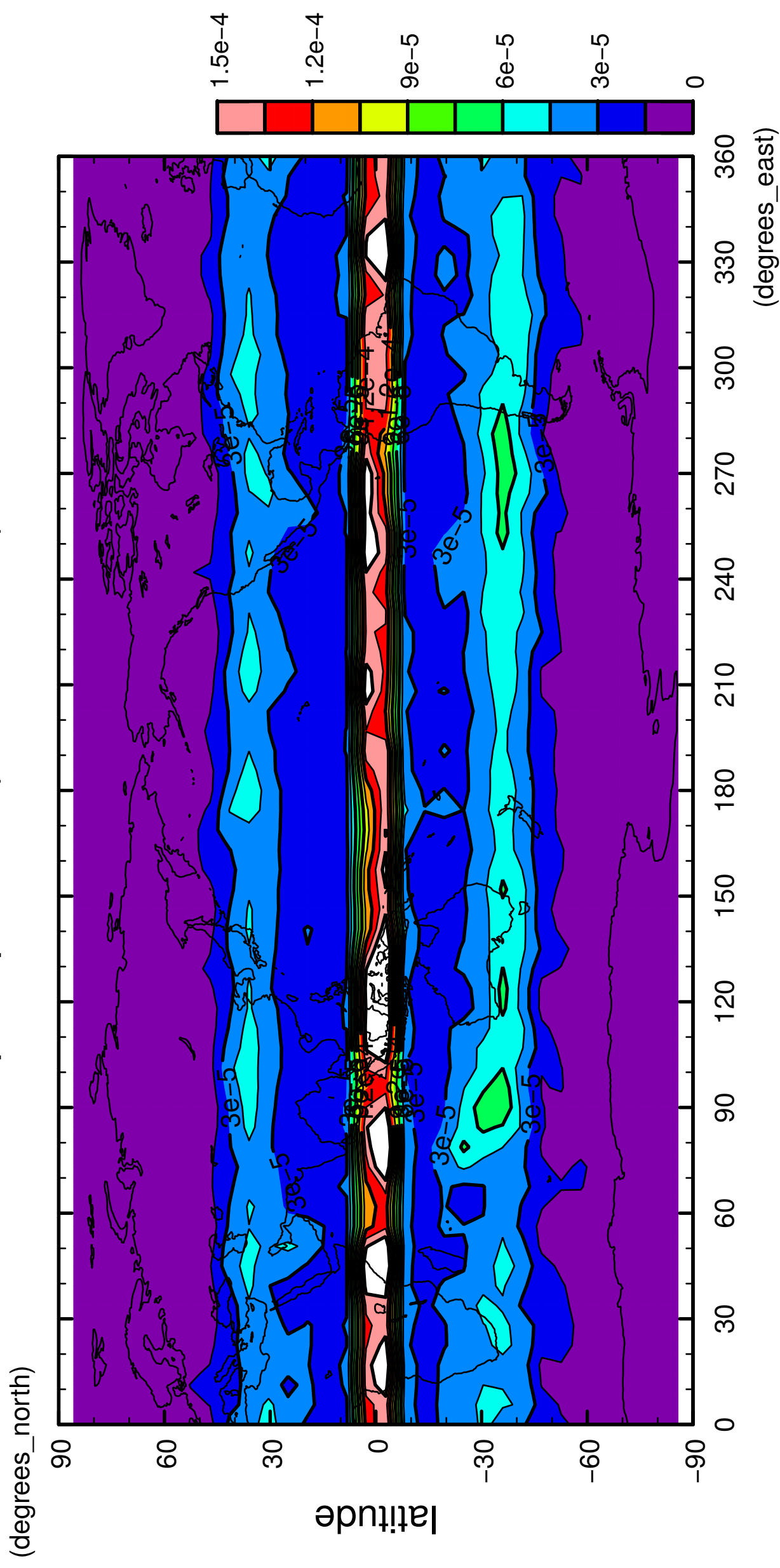
3/12

precipitation (rain + snow)



4/12

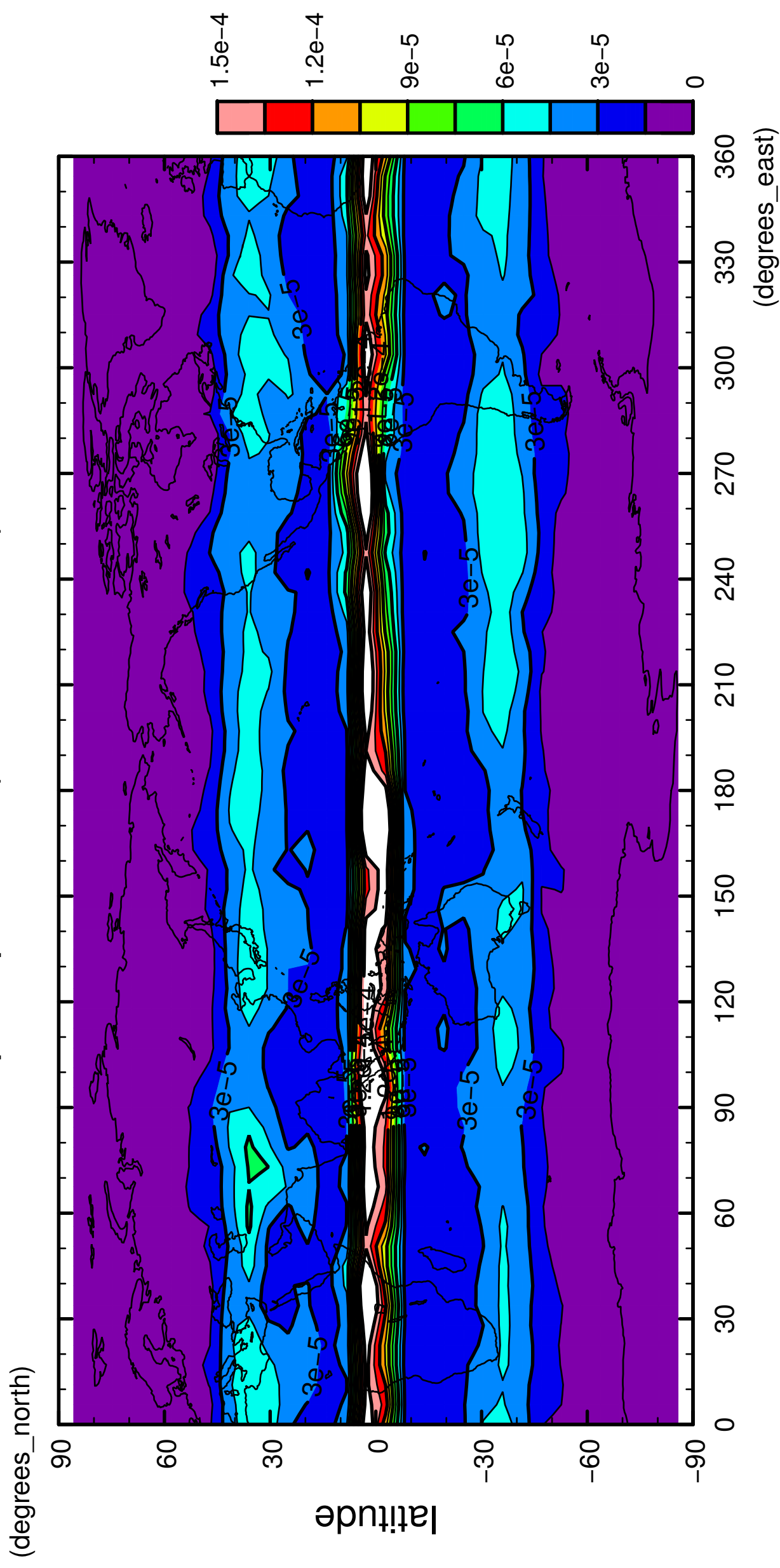
precipitation (rain + snow)



longitude
CONTOUR INTERVAL = 1.500E-05

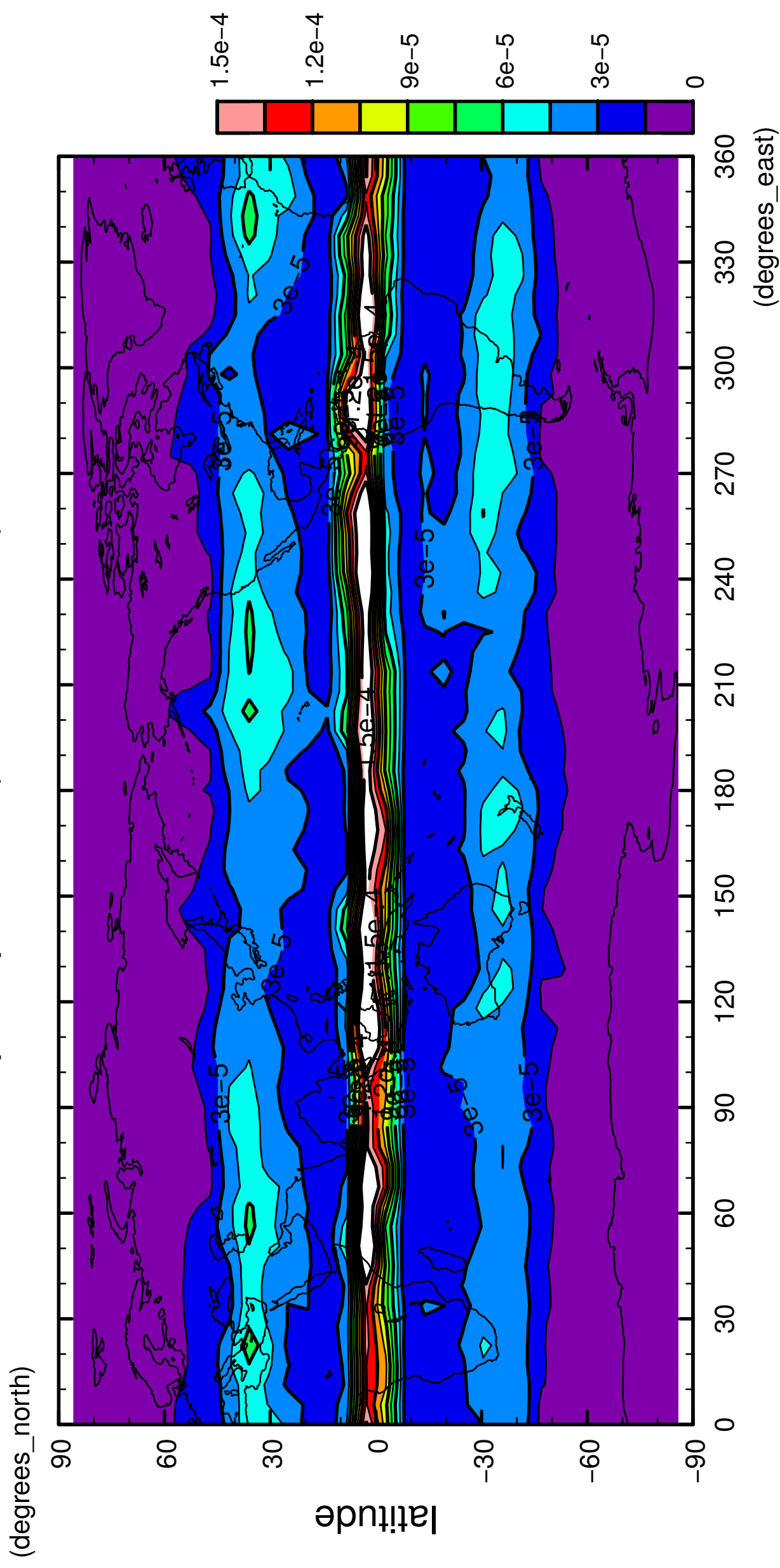
5/12

precipitation (rain + snow)



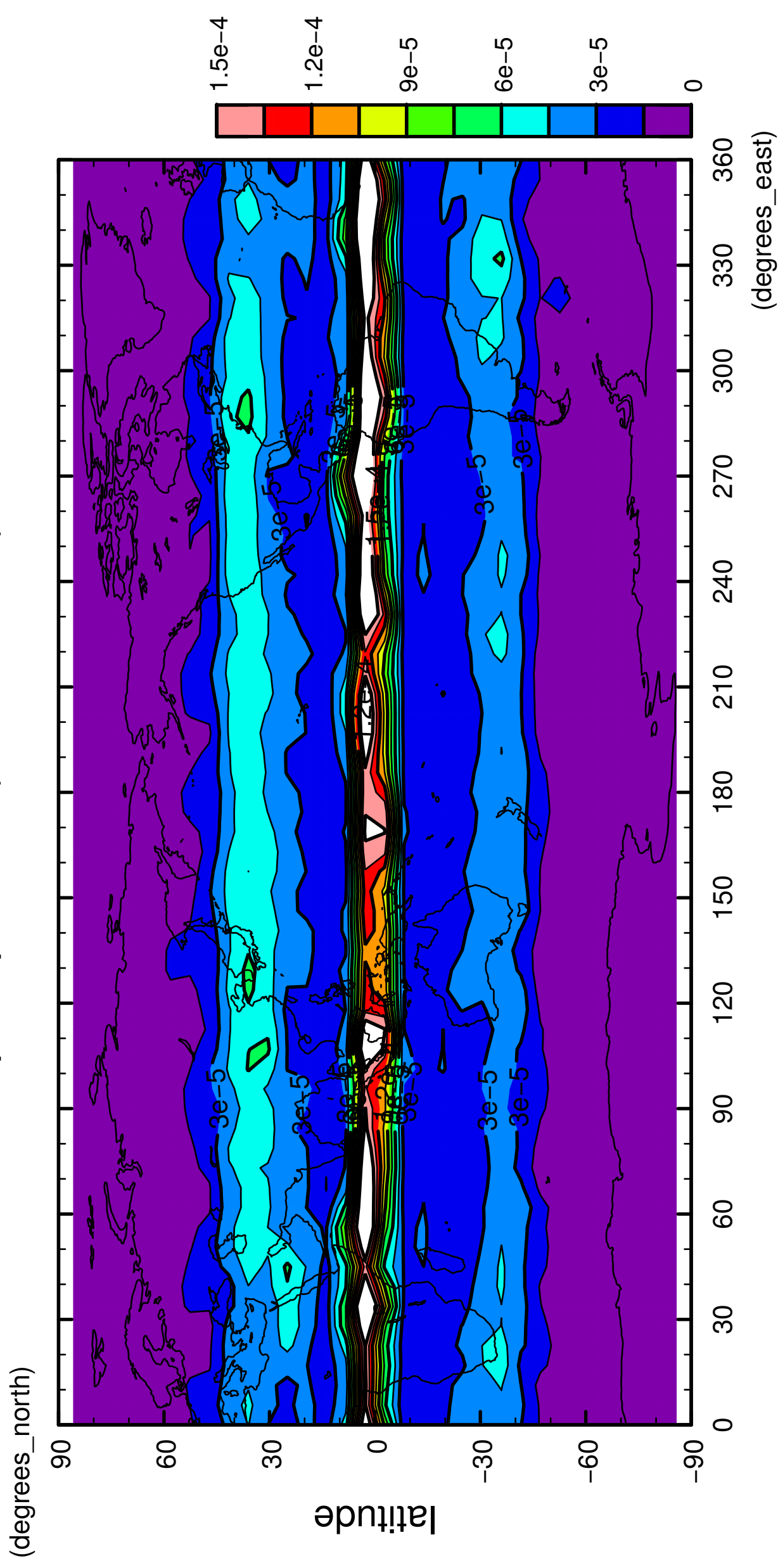
6/12

precipitation (rain + snow)



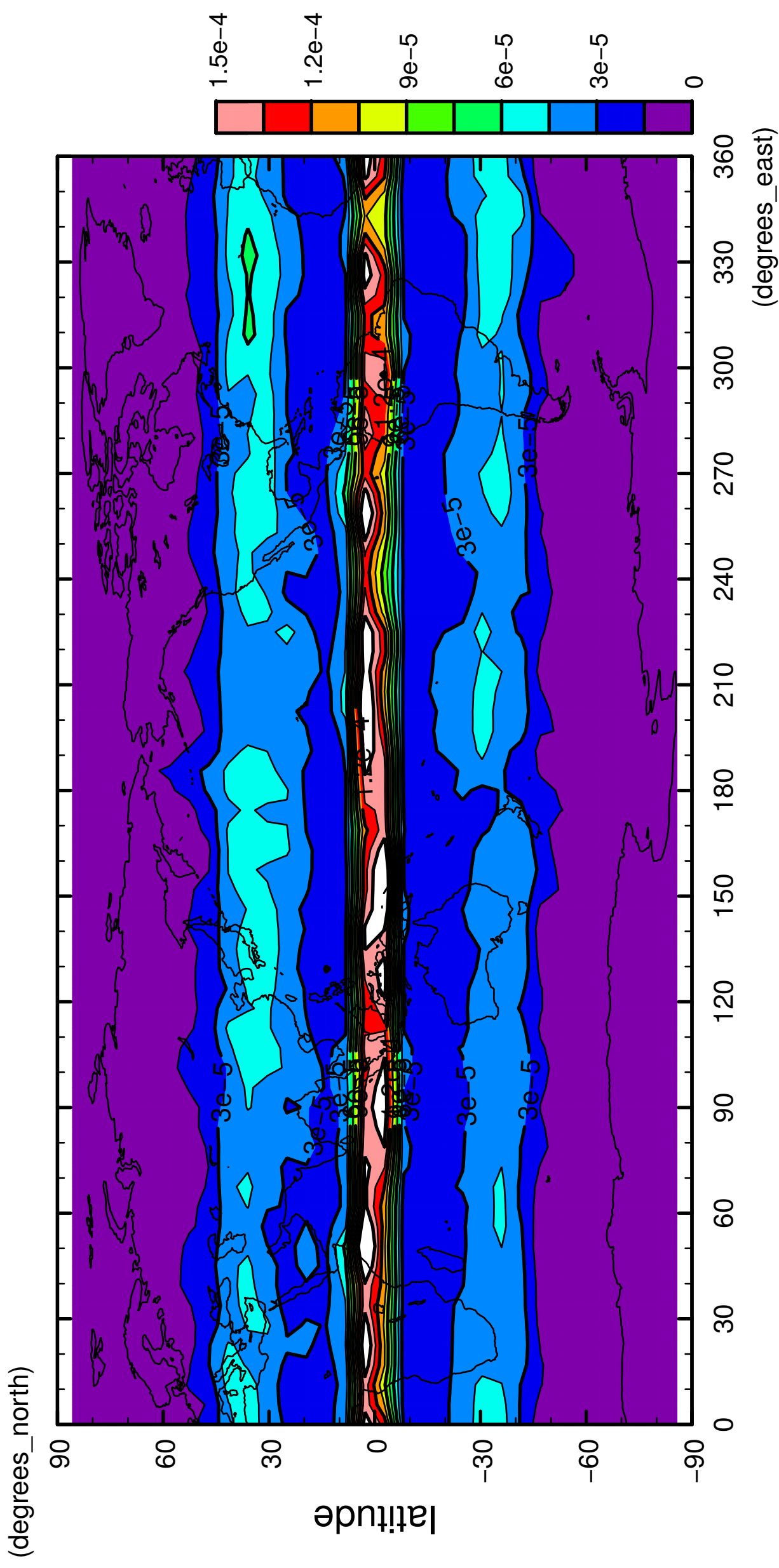
9/12

precipitation (rain + snow)



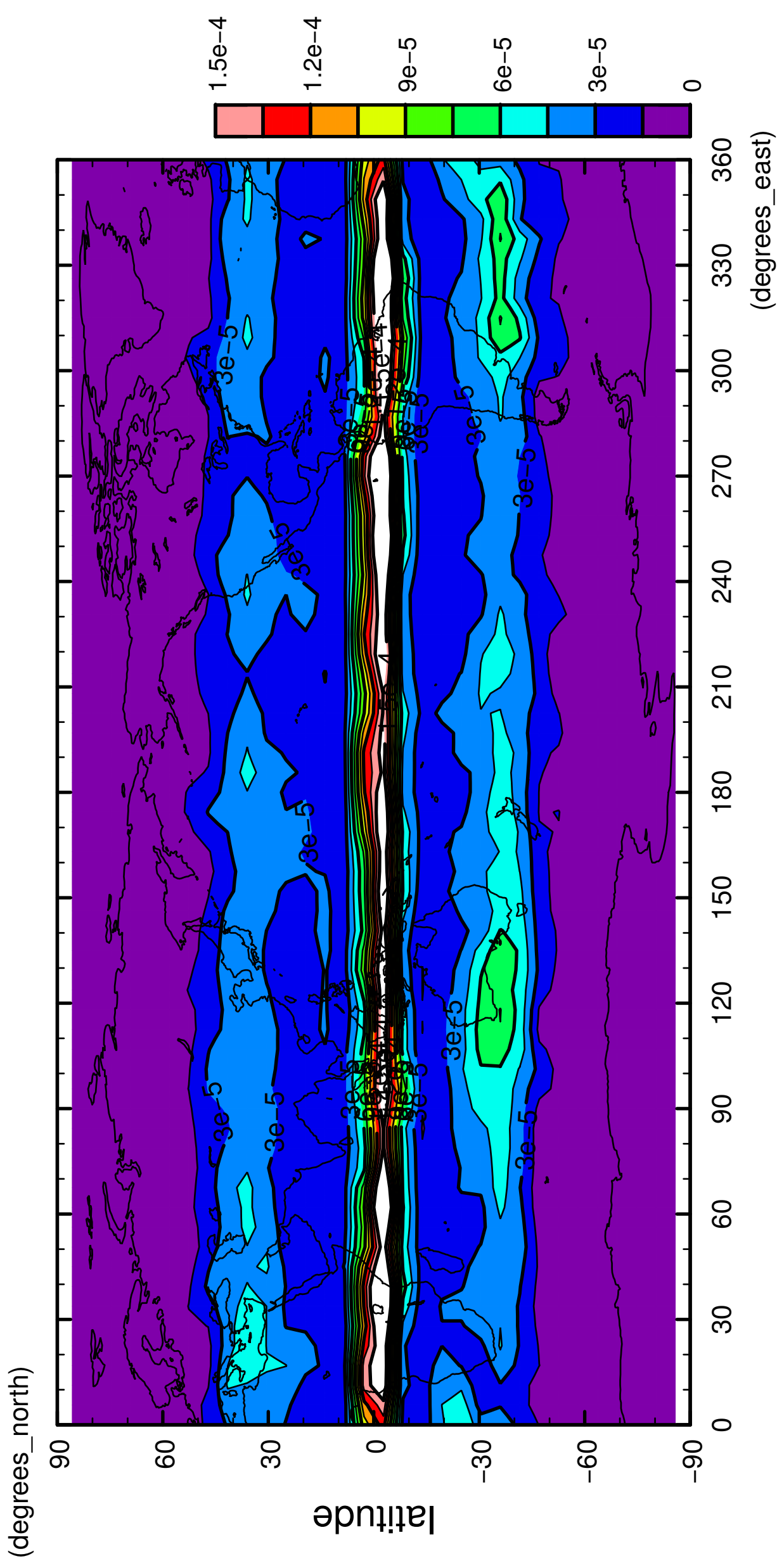
10/12

precipitation (rain + snow)



12/12

precipitation (rain + snow)



longitude
CONTOUR INTERVAL = 1.500E-05