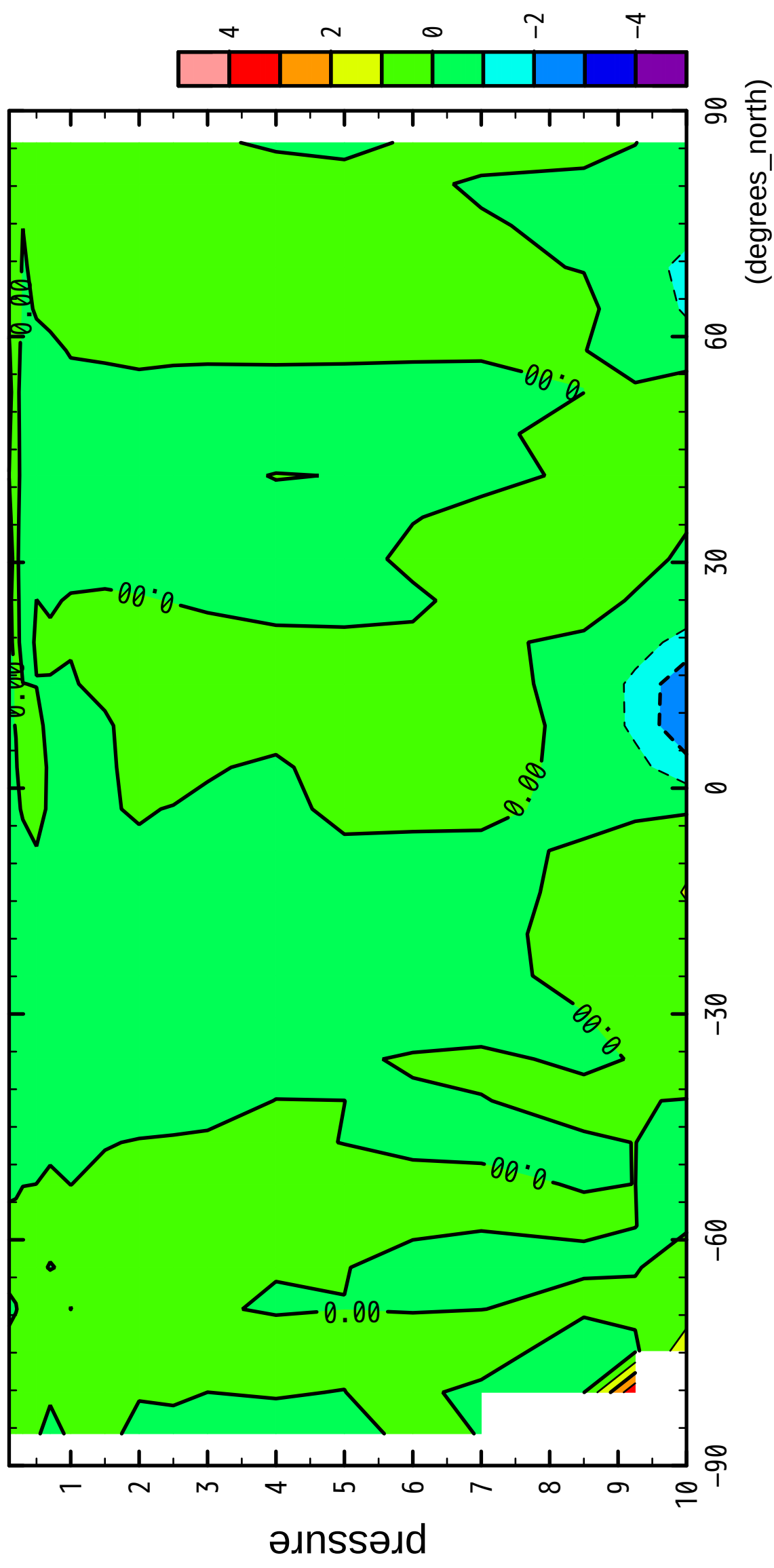


1/12

V

( $\times 10^4$  Pa)



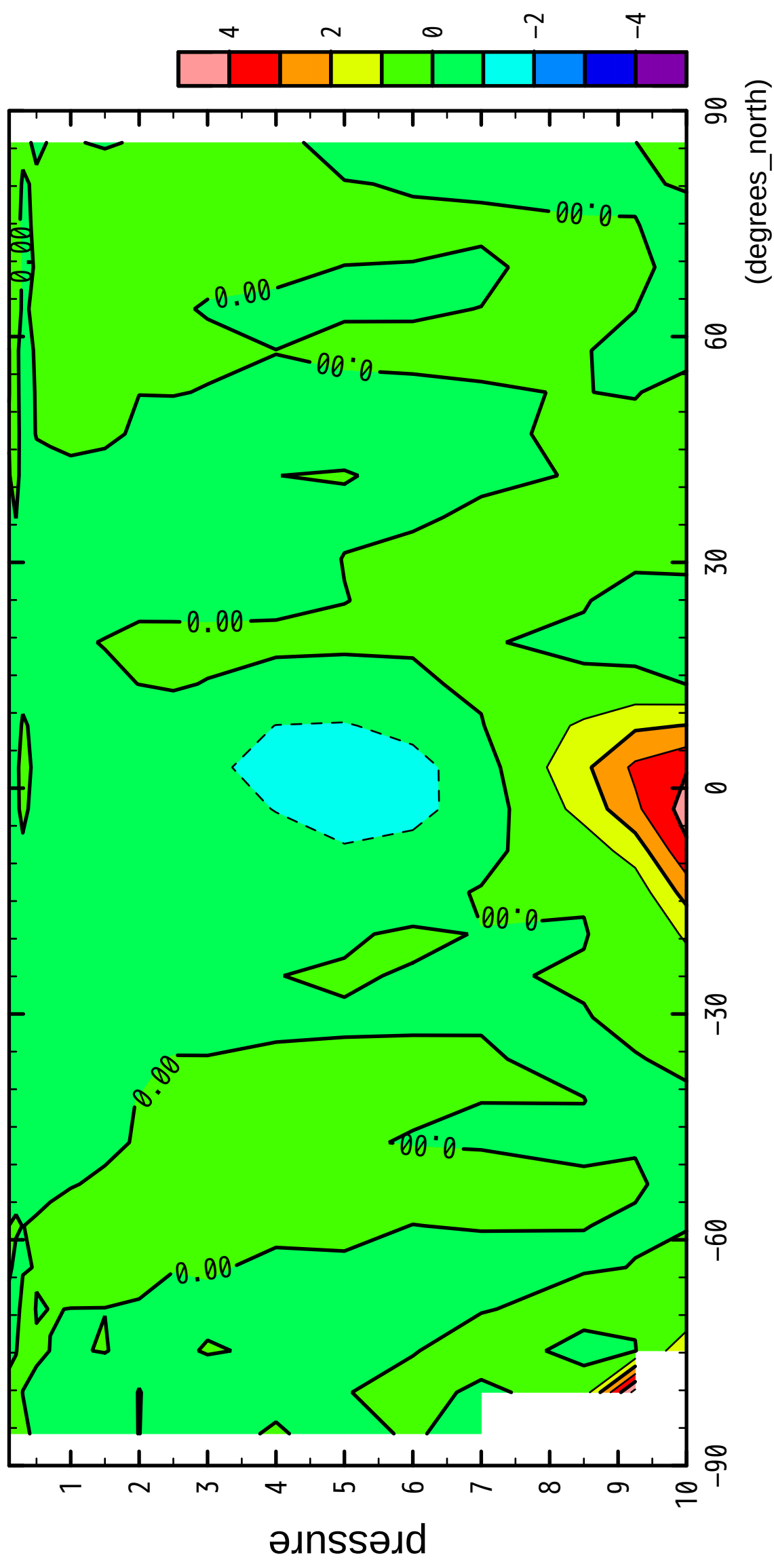
latitude

CONTOUR INTERVAL = 1.000E+00

2/12

V

( $\times 10^4$  Pa)



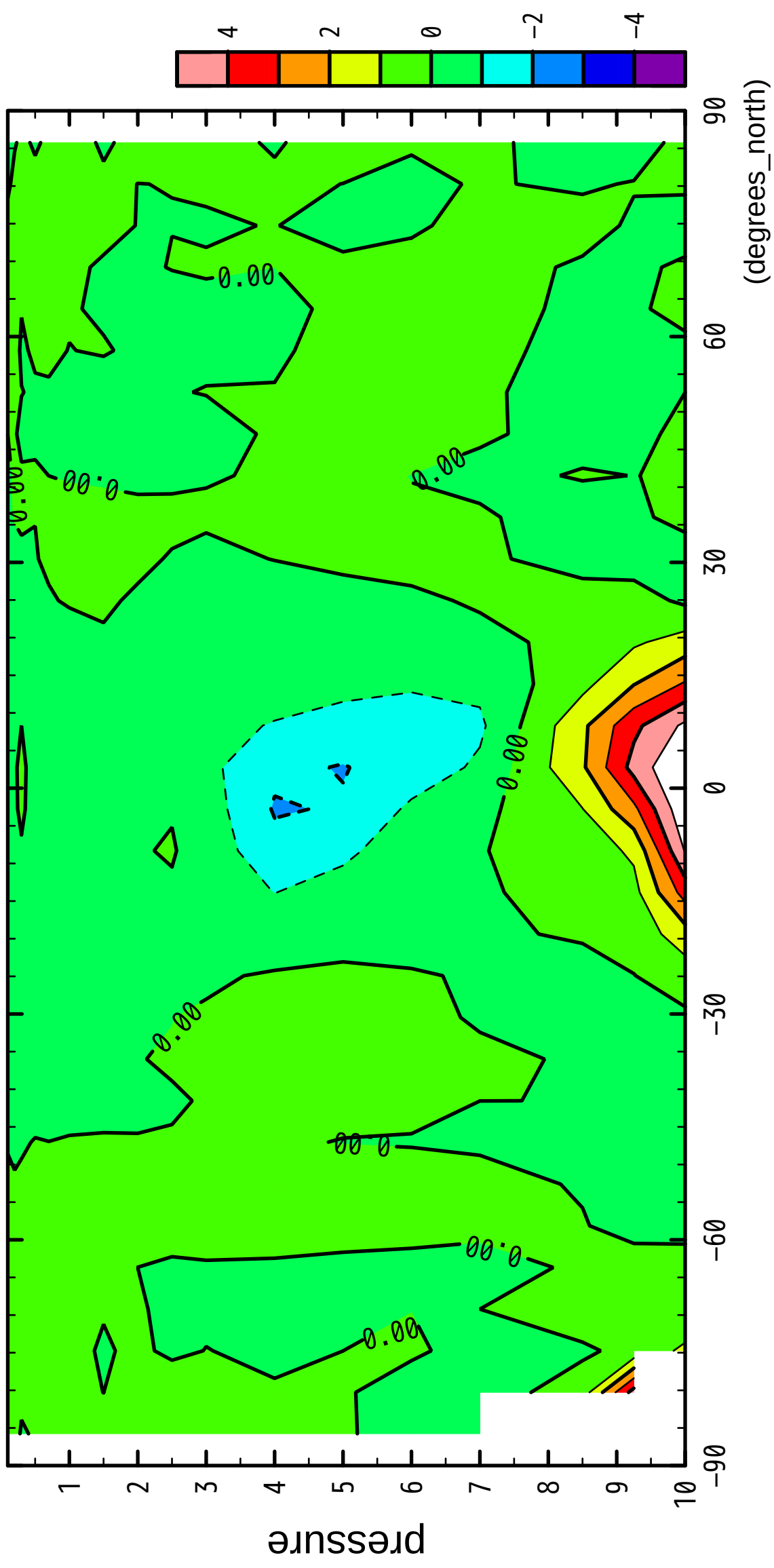
latitude

CONTOUR INTERVAL = 1.000E+00

3/12

V

( $\times 10^4$  Pa)



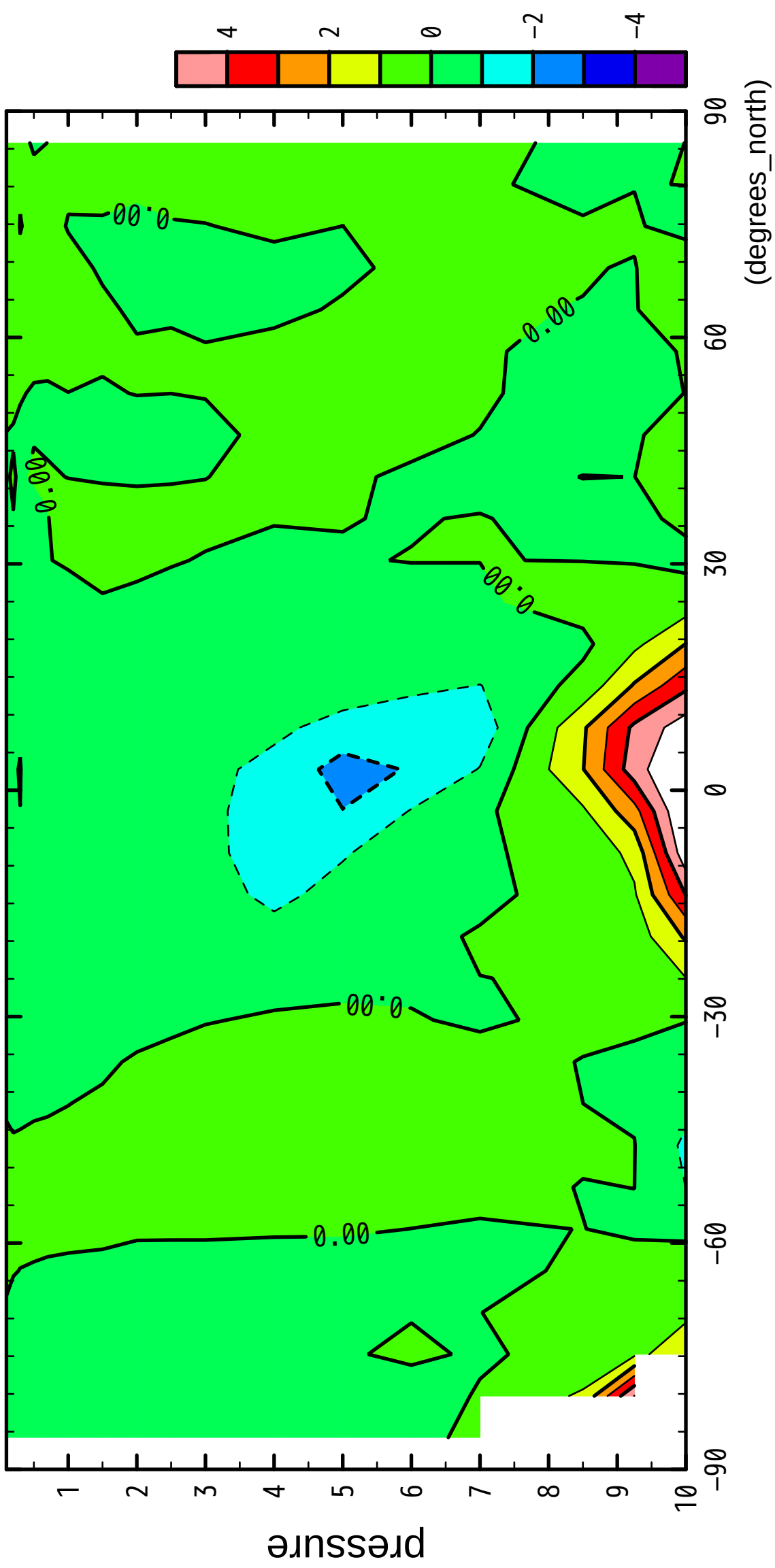
latitude

CONTOUR INTERVAL = 1.000E+00

4/12

V

( $\times 10^4$  Pa)



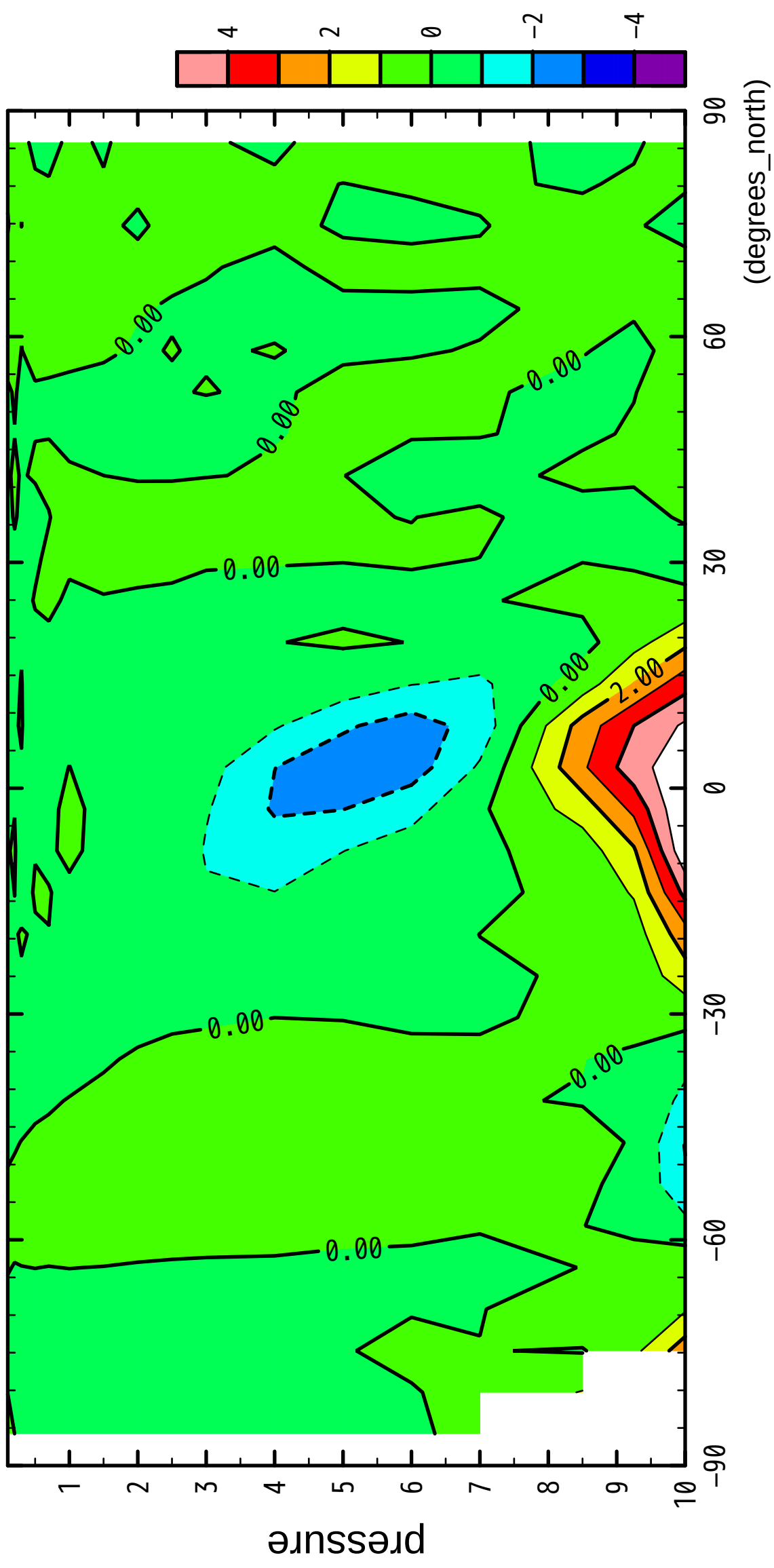
latitude

CONTOUR INTERVAL = 1.000E+00

5/12

V

( $\times 10^4$  Pa)



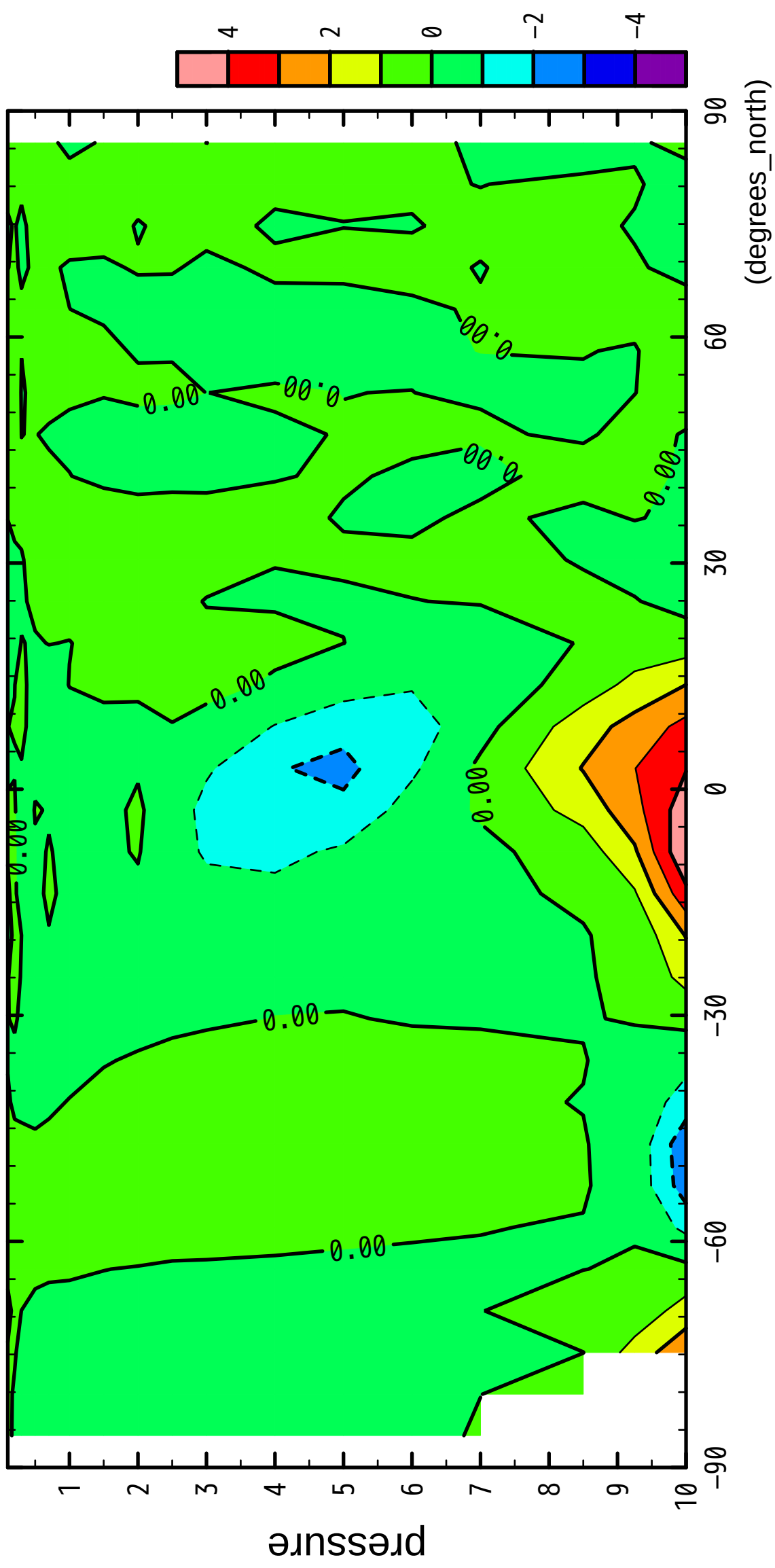
latitude

CONTOUR INTERVAL = 1.000E+00

6/12

V

( $\times 10^4$  Pa)



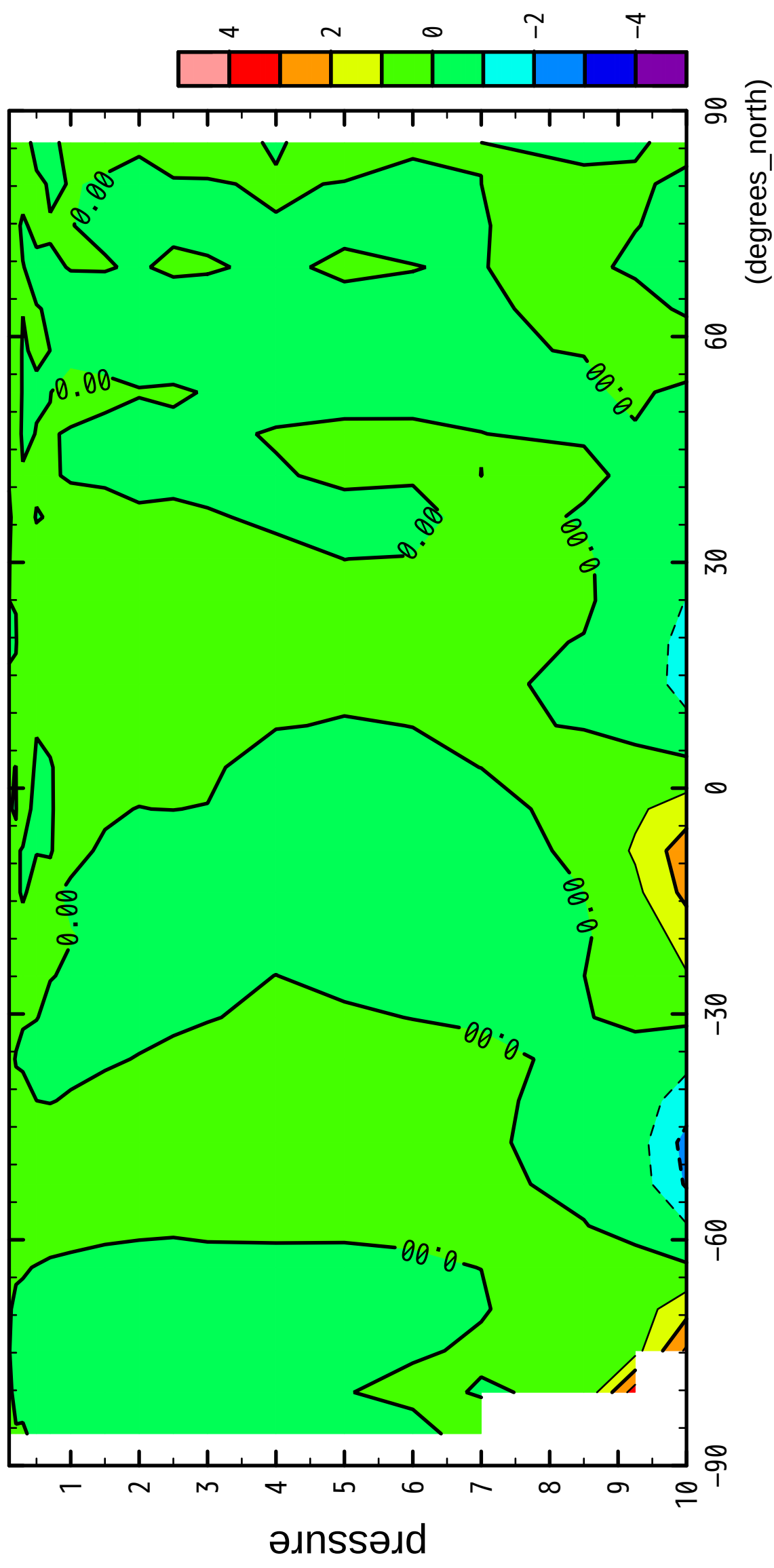
latitude

CONTOUR INTERVAL = 1.000E+00

7/12

V

( $\times 10^4$  Pa)

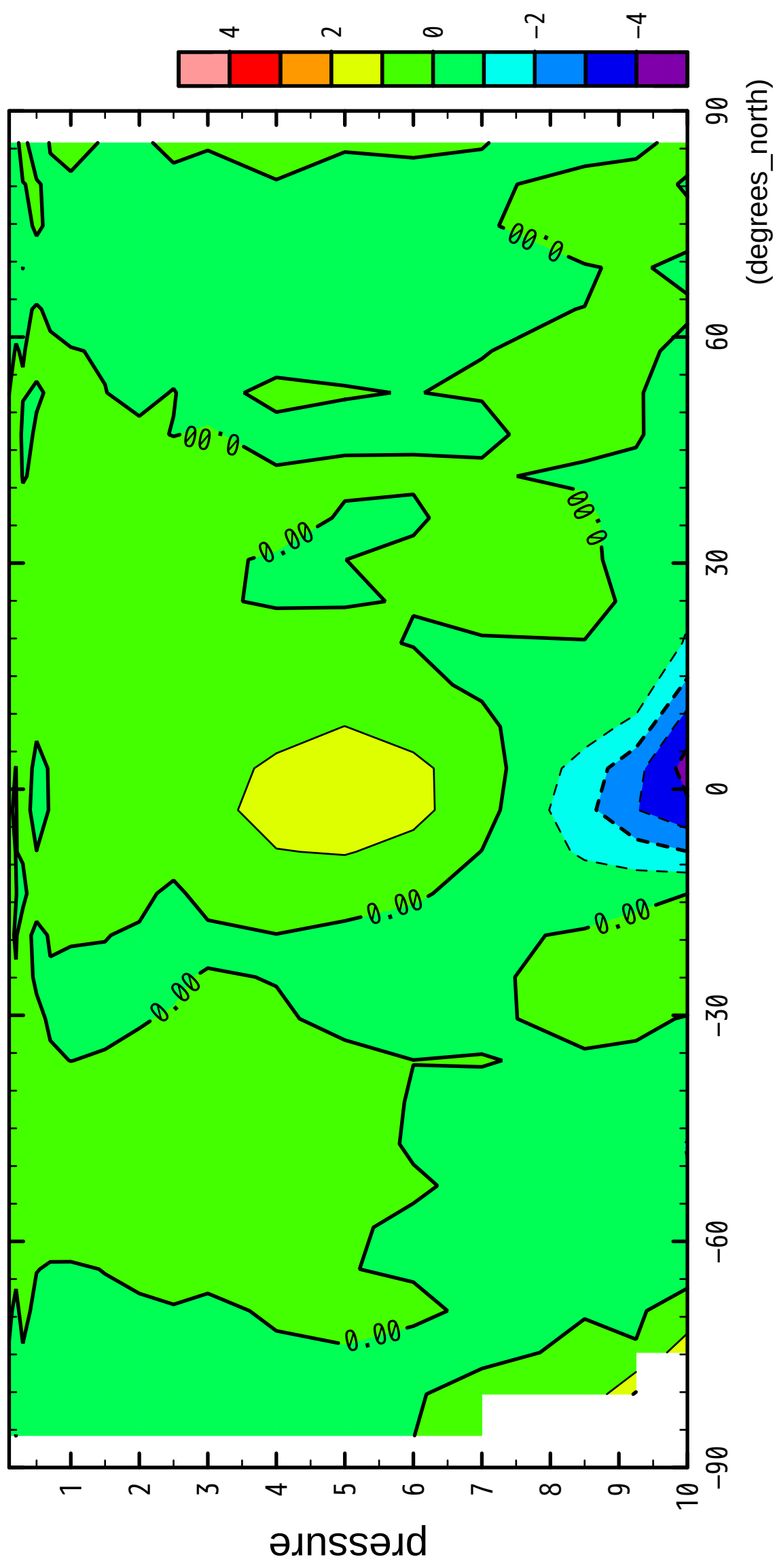


CONTOUR INTERVAL = 1.000E+00

8/12

V

( $\times 10^4$  Pa)



latitude

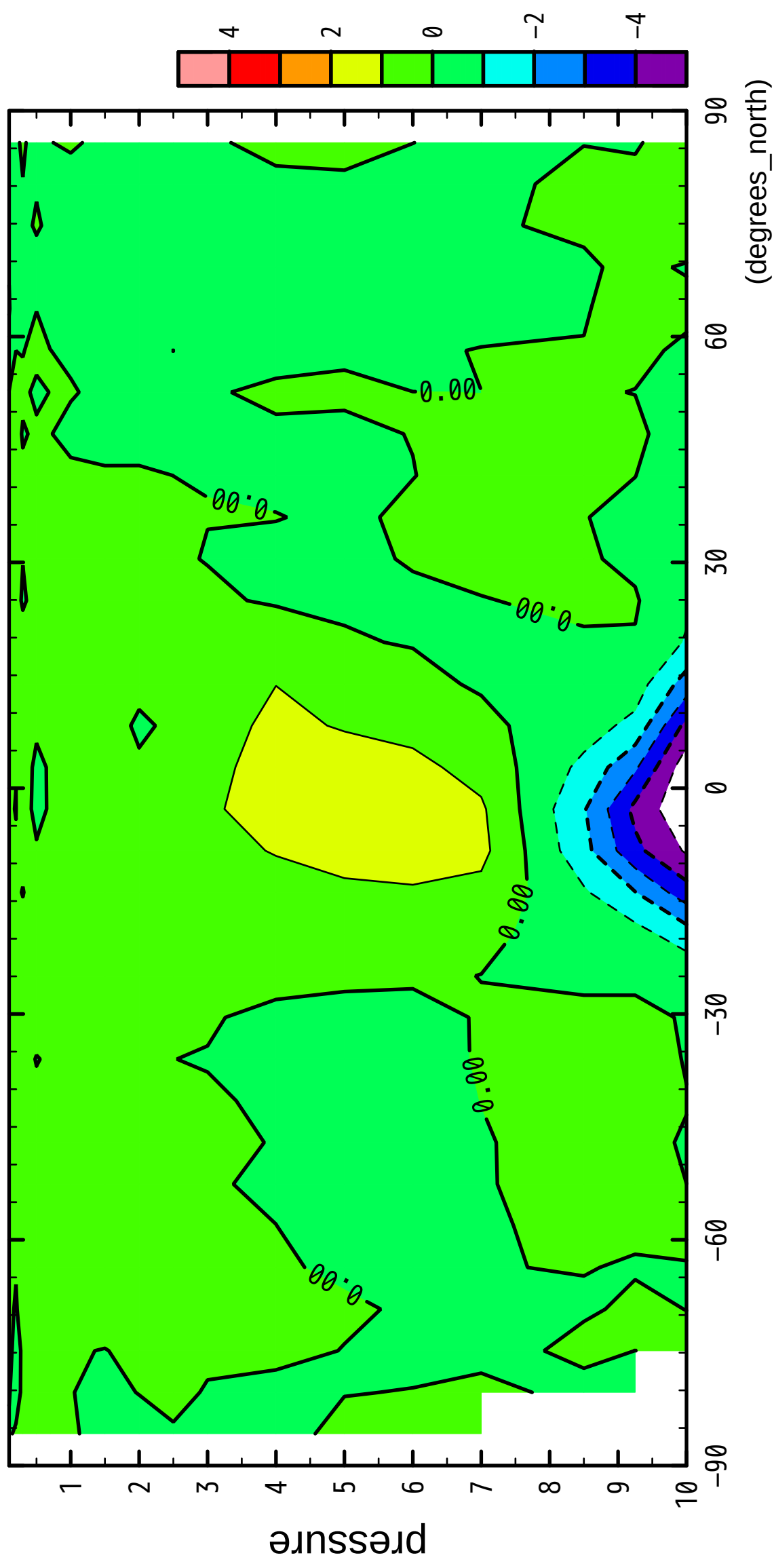
CONTOUR INTERVAL = 1.000E+00



9/12

V

( $\times 10^4$  Pa)



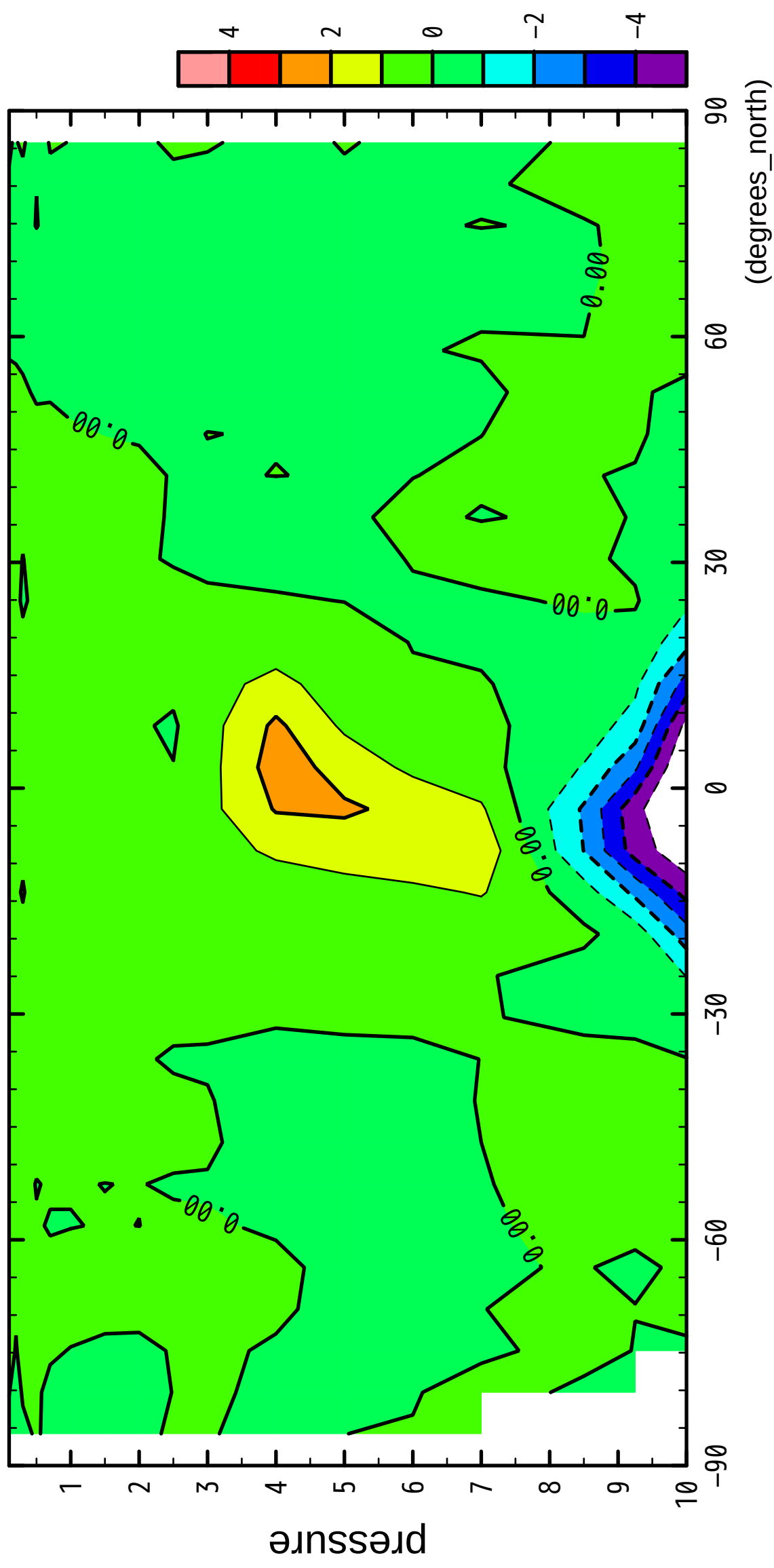
latitude

CONTOUR INTERVAL = 1.000E+00

10/12

V

( $\times 10^4$  Pa)



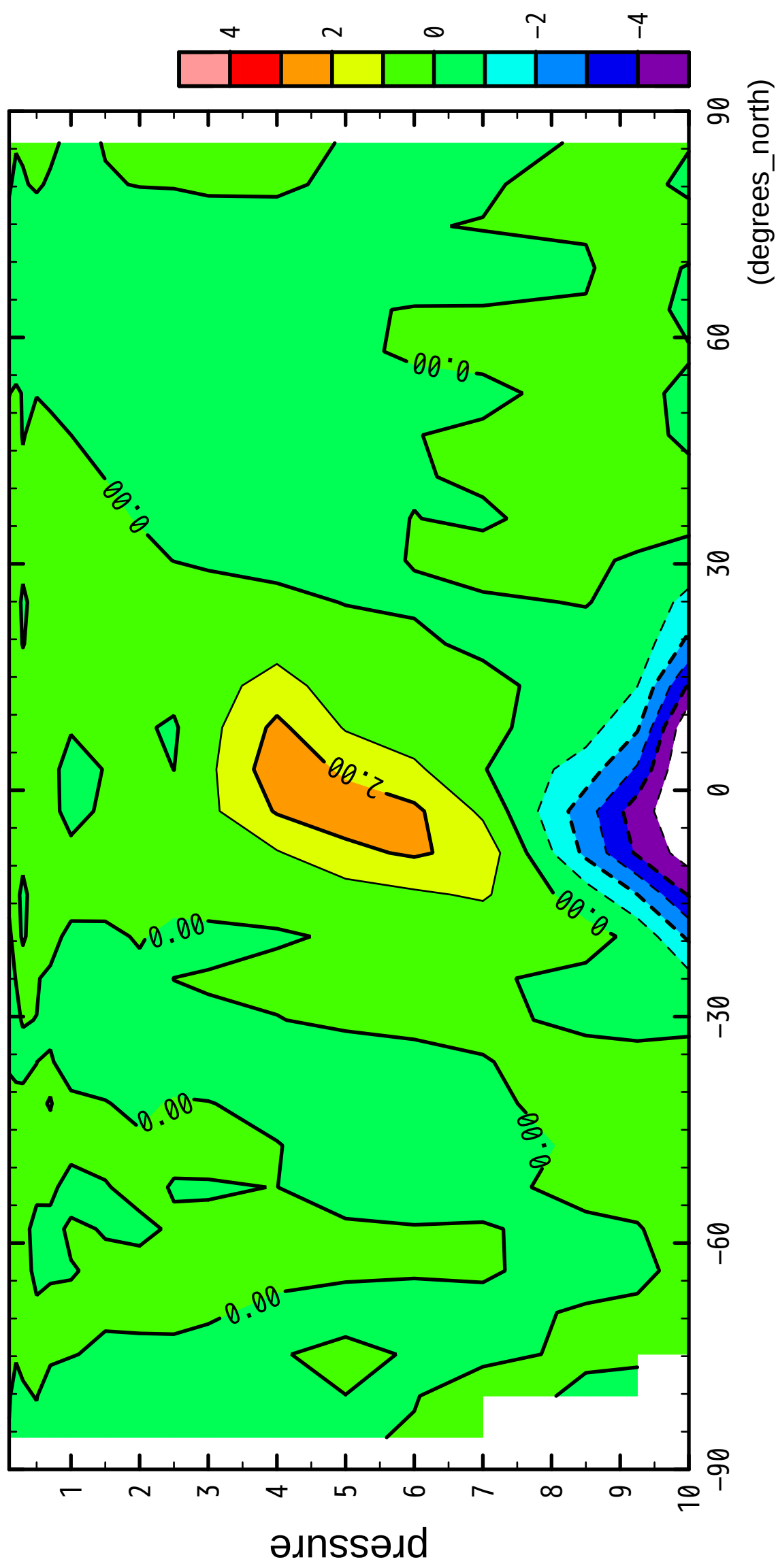
latitude

CONTOUR INTERVAL = 1.000E+00

11/12

V

( $\times 10^4$  Pa)



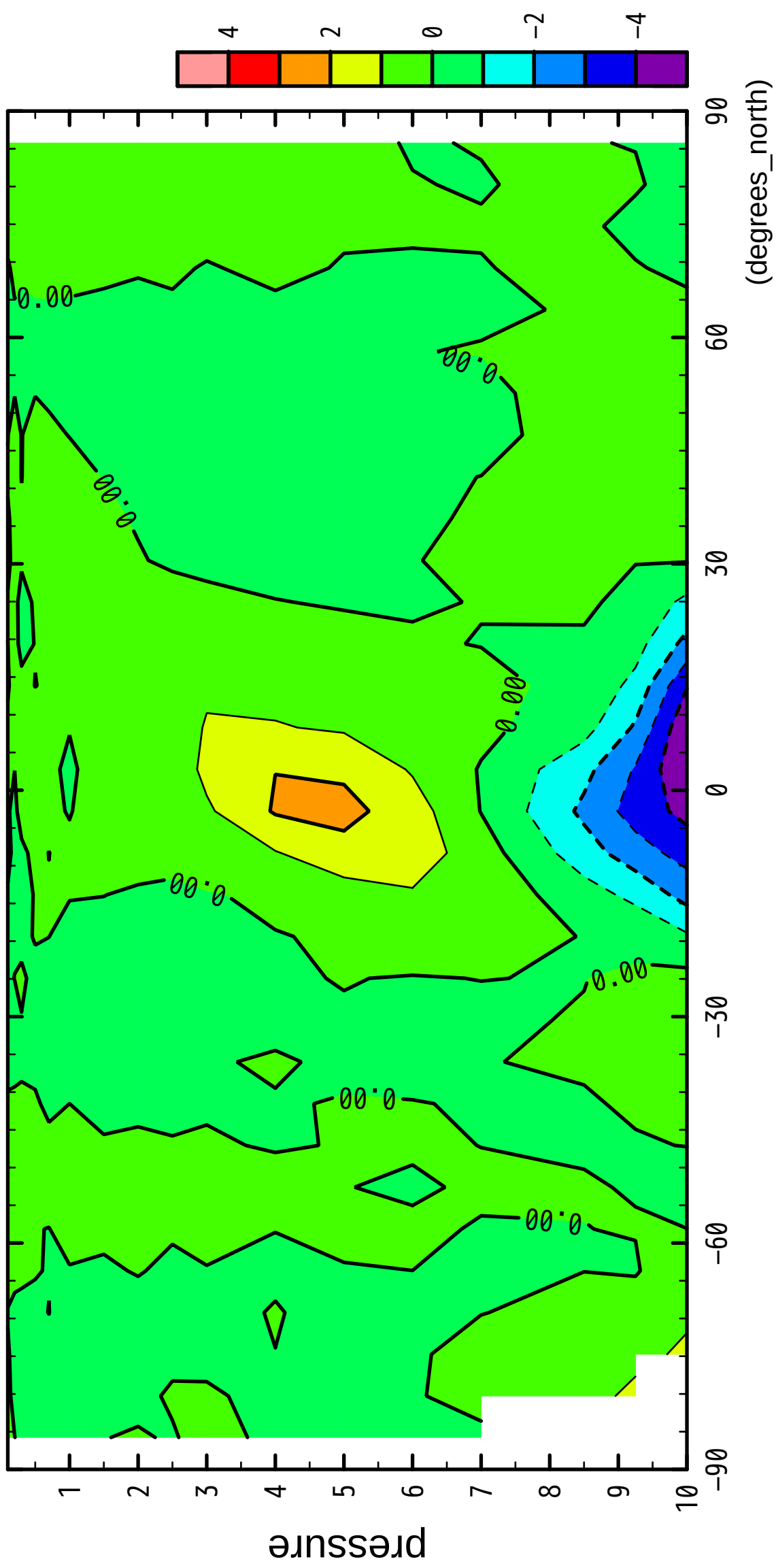
latitude

CONTOUR INTERVAL = 1.000E+00

12/12

V

( $\times 10^4$  Pa)



latitude

CONTOUR INTERVAL = 1.000E+00