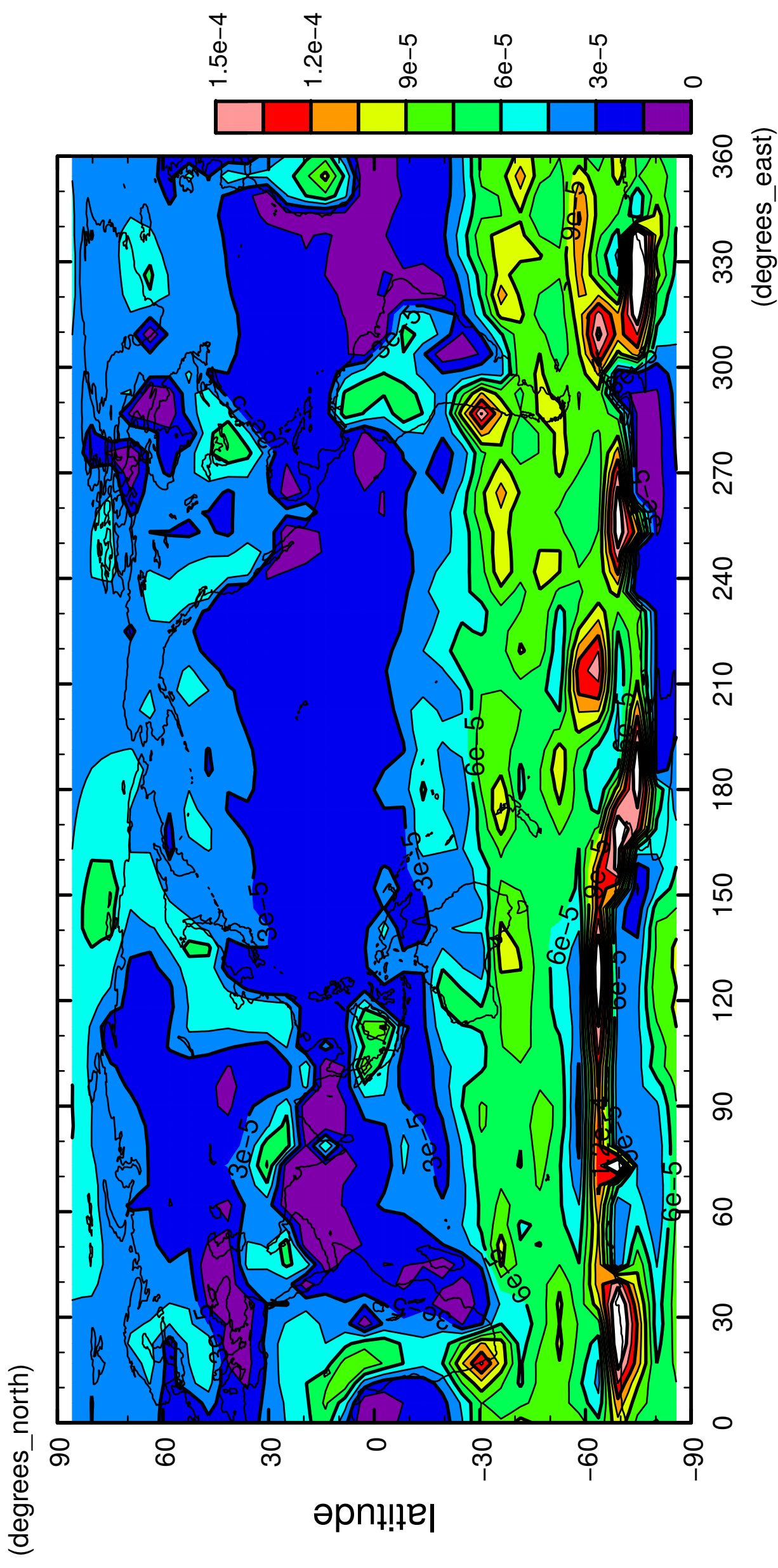


1/12

# precipitation (rain + snow)

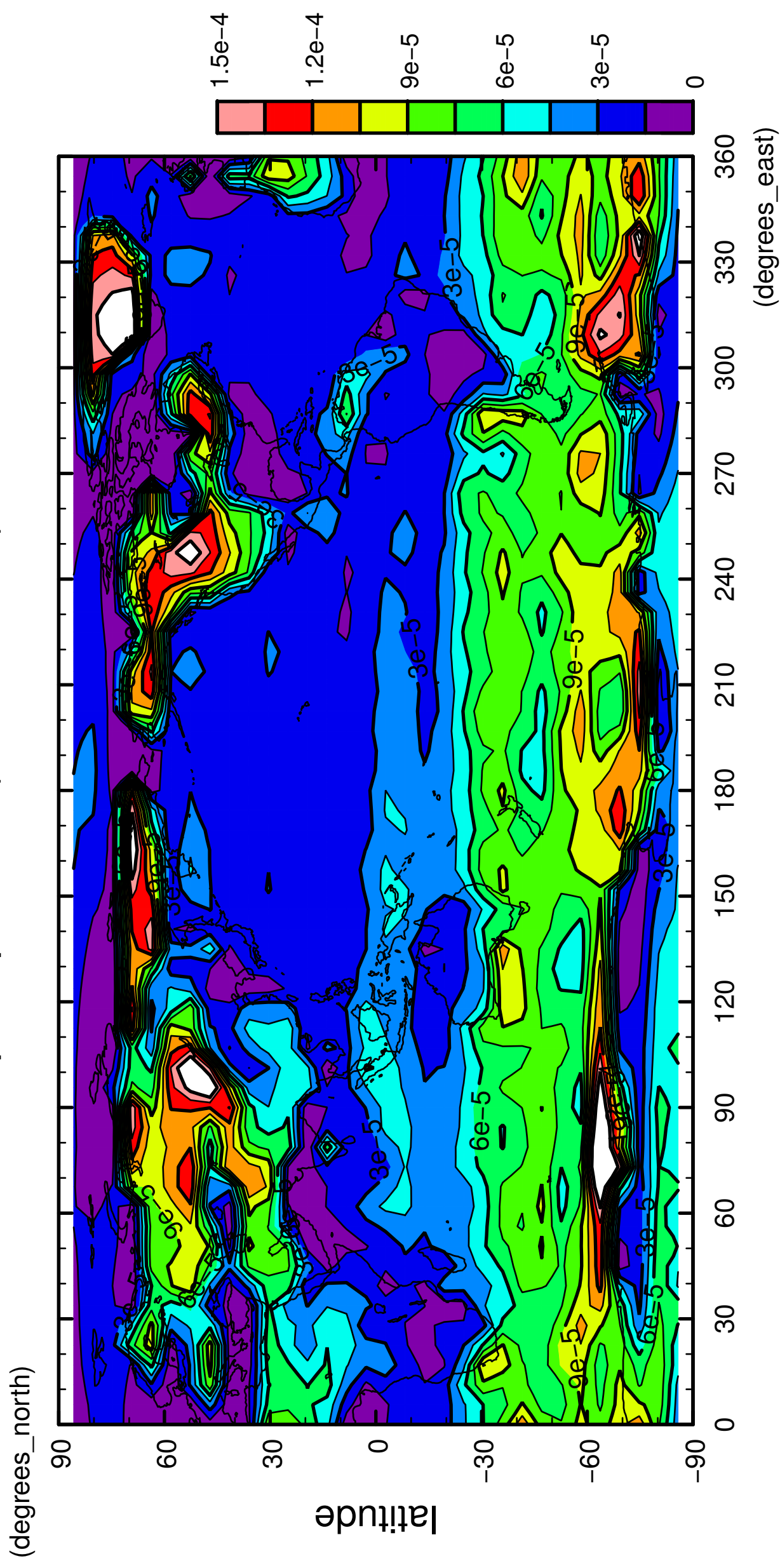


longitude

CONTOUR INTERVAL = 1.500E-05

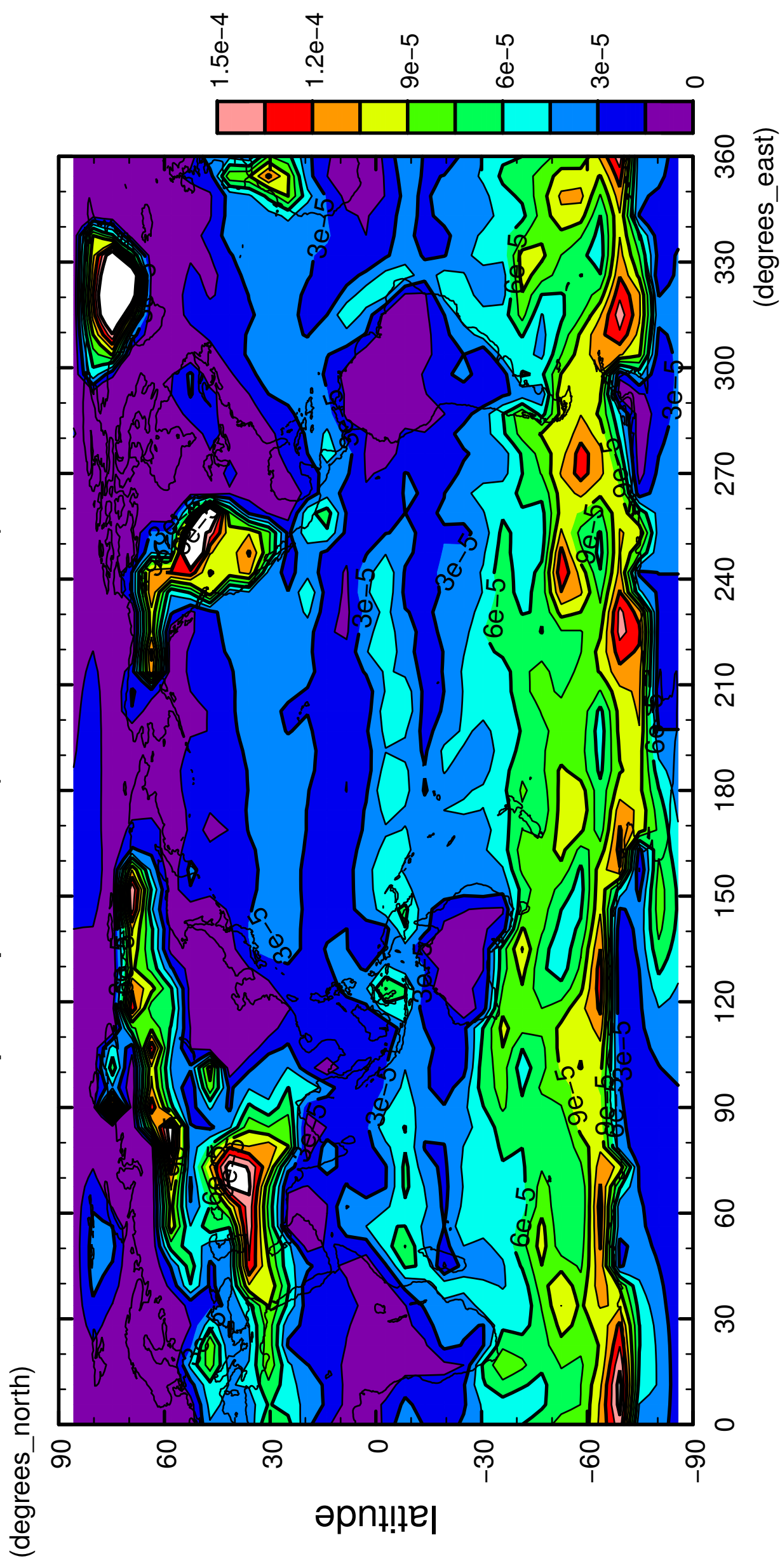
2/12

# precipitation (rain + snow)



3/12

# precipitation (rain + snow)

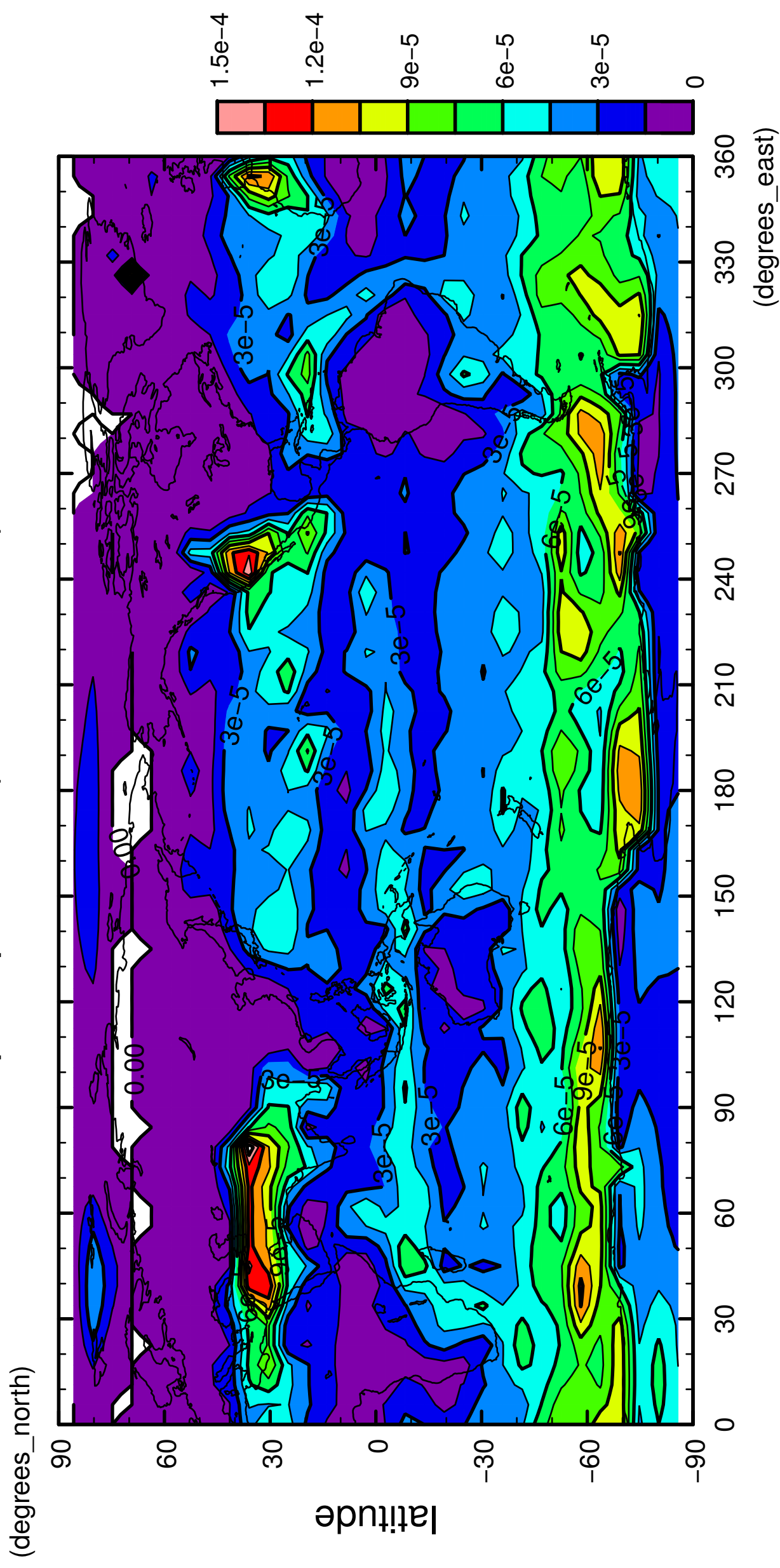


longitude

CONTOUR INTERVAL = 1.500E-05

4/12

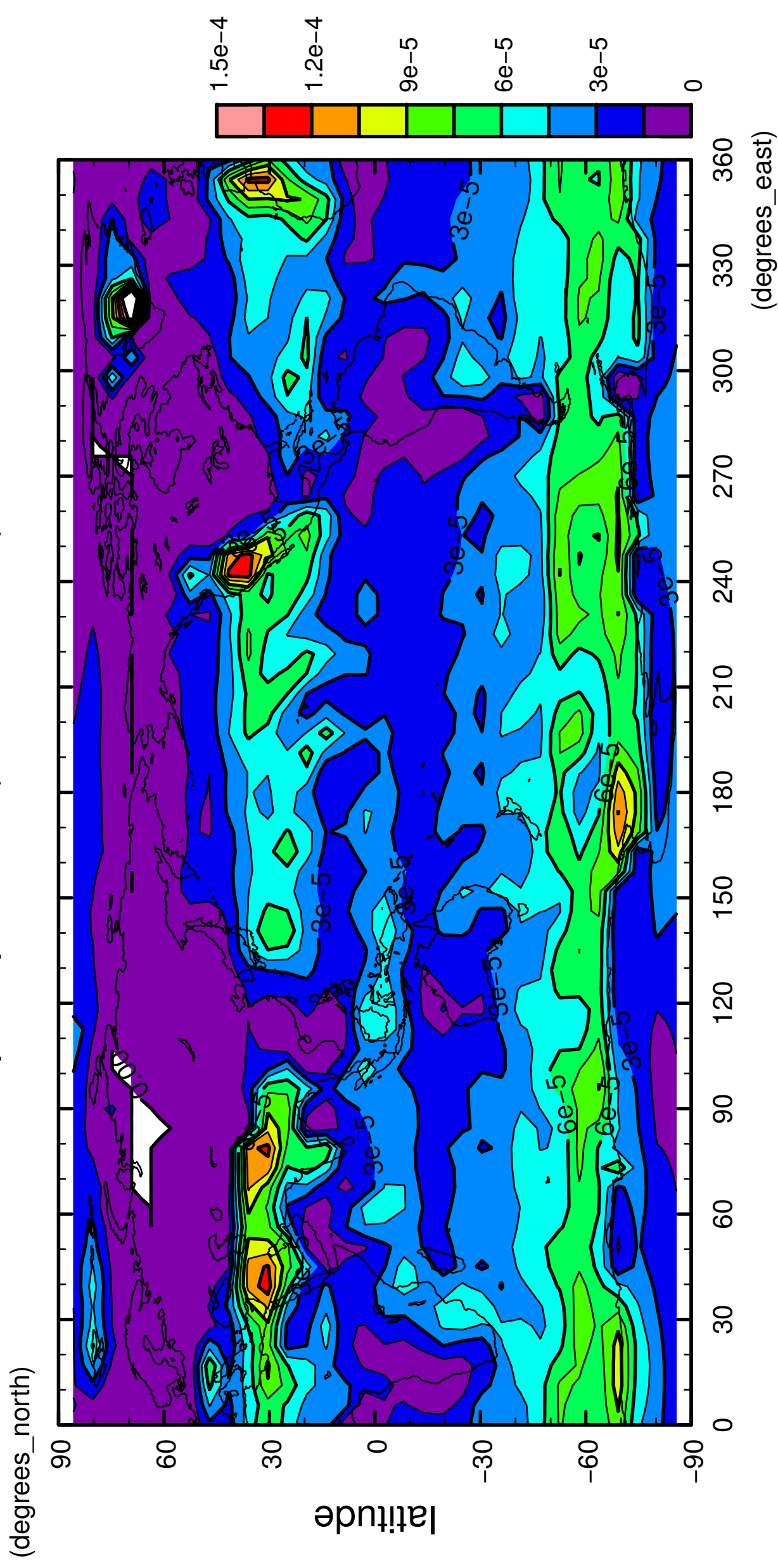
# precipitation (rain + snow)



longitude  
CONTOUR INTERVAL = 1.500E-05

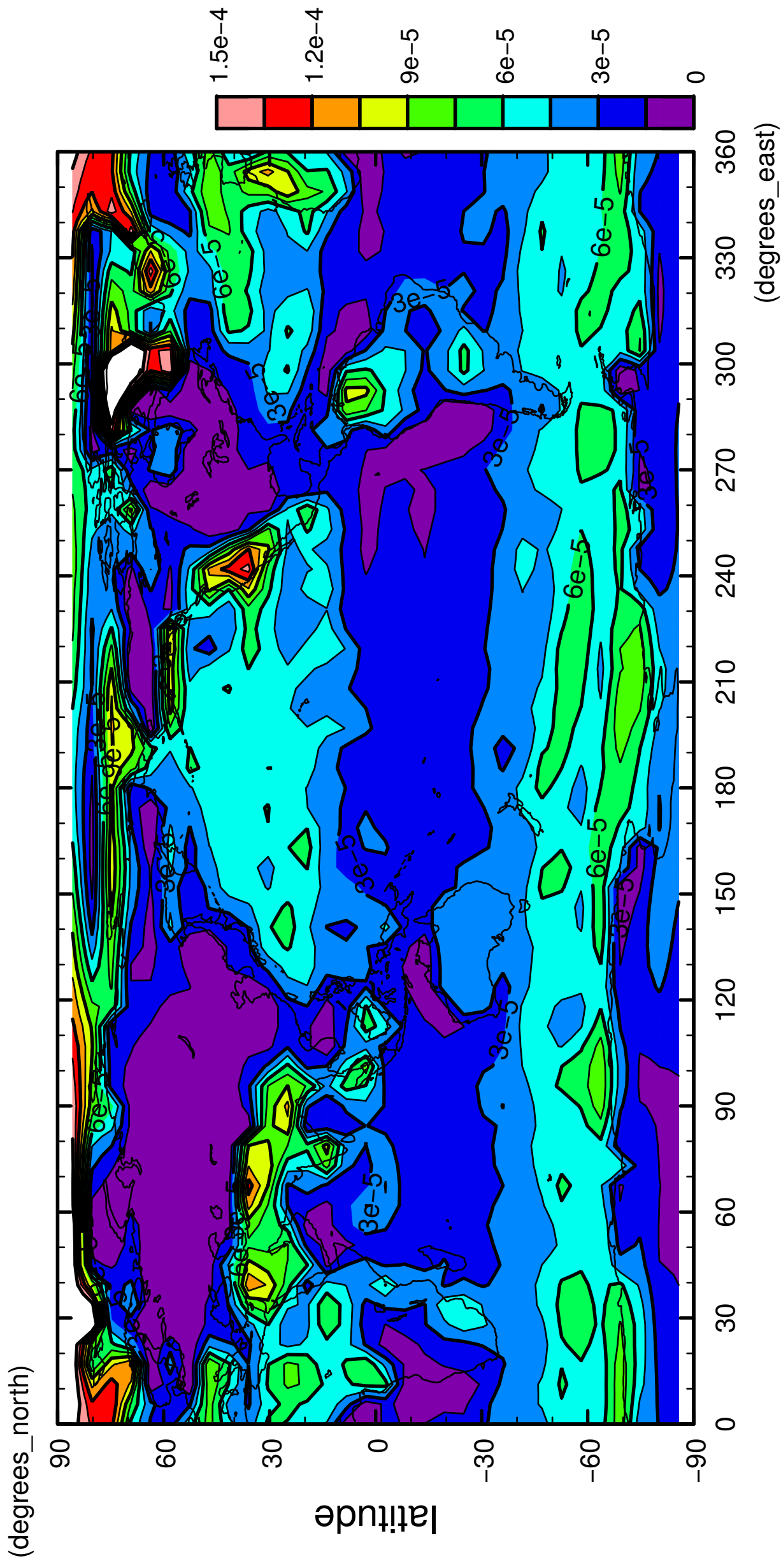
5/12

# precipitation (rain + snow)



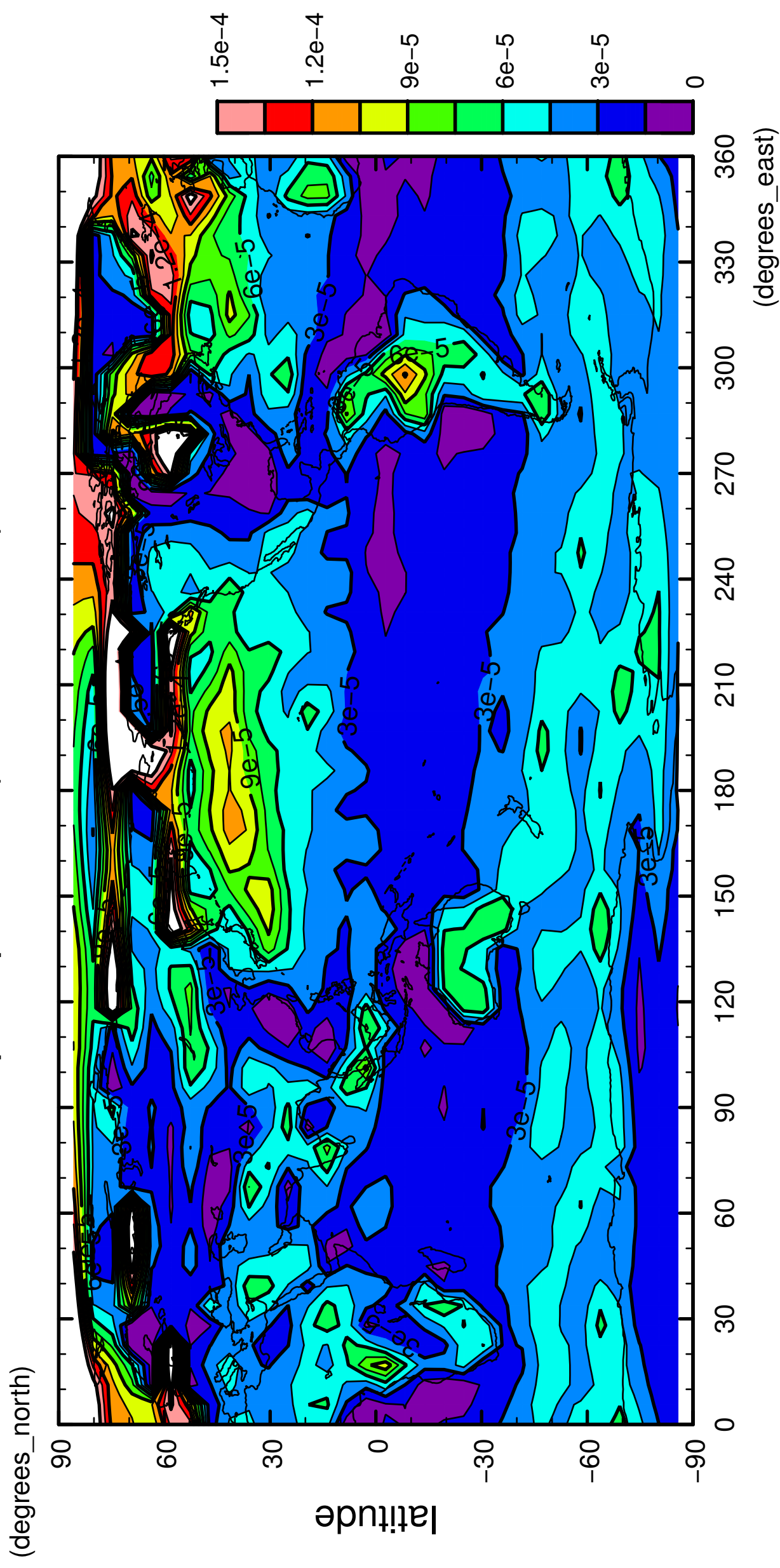
6/12

precipitation (rain + snow)



7/12

# precipitation (rain + snow)

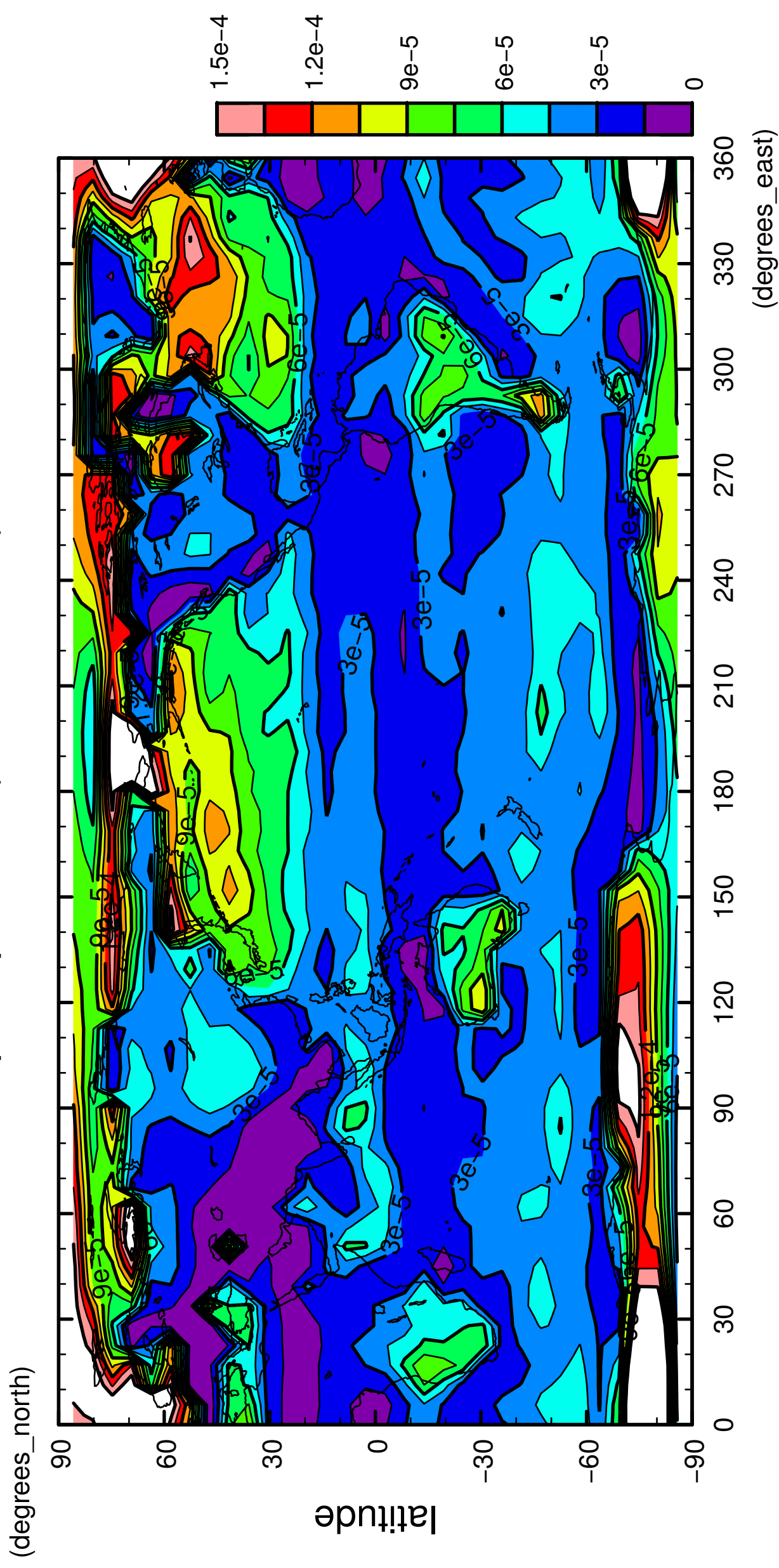


longitude

CONTOUR INTERVAL = 1.500E-05

8/12

precipitation (rain + snow)



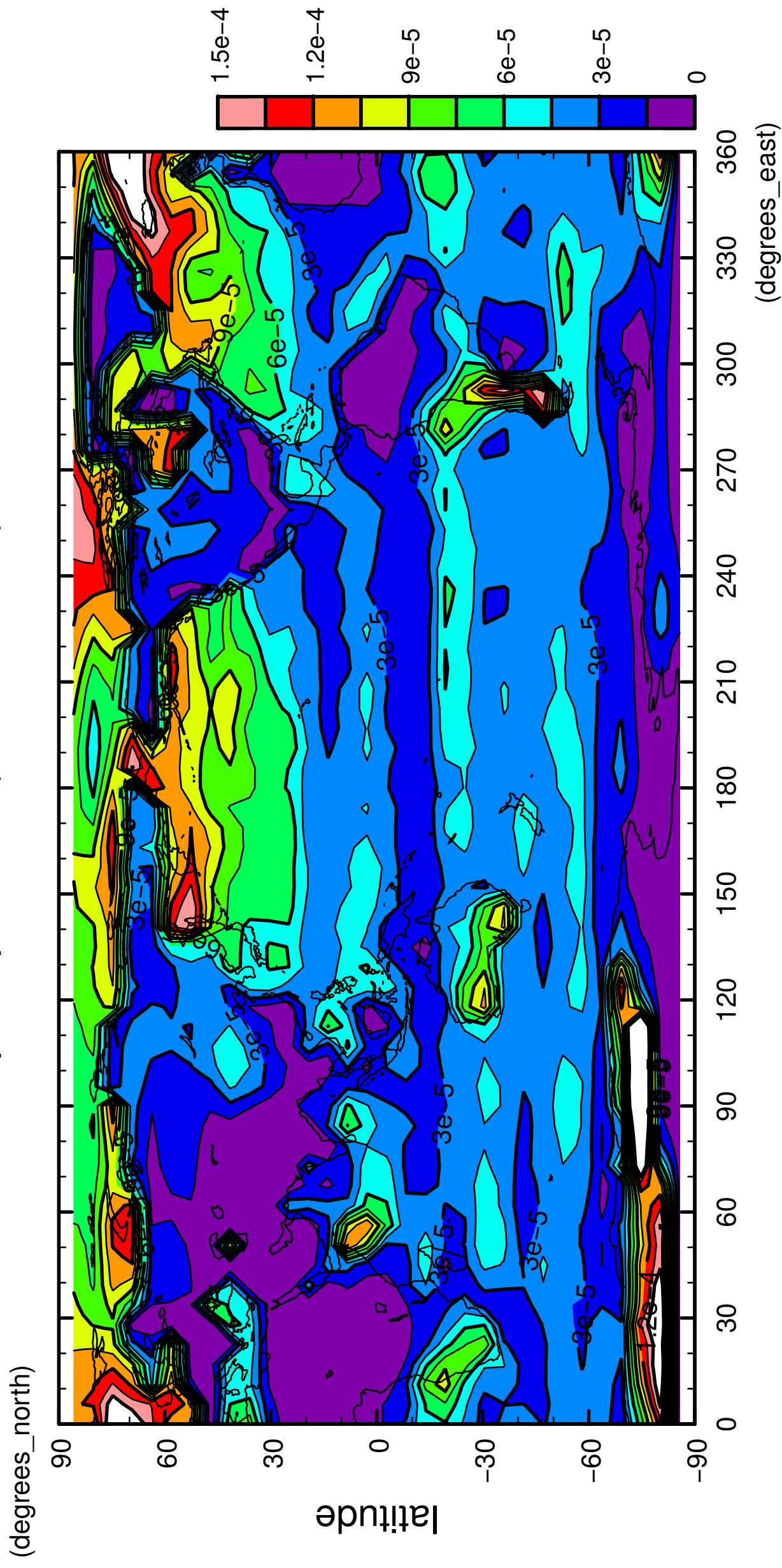
longitude

CONTOUR INTERVAL = 1.500E-05



9/12

precipitation (rain + snow)

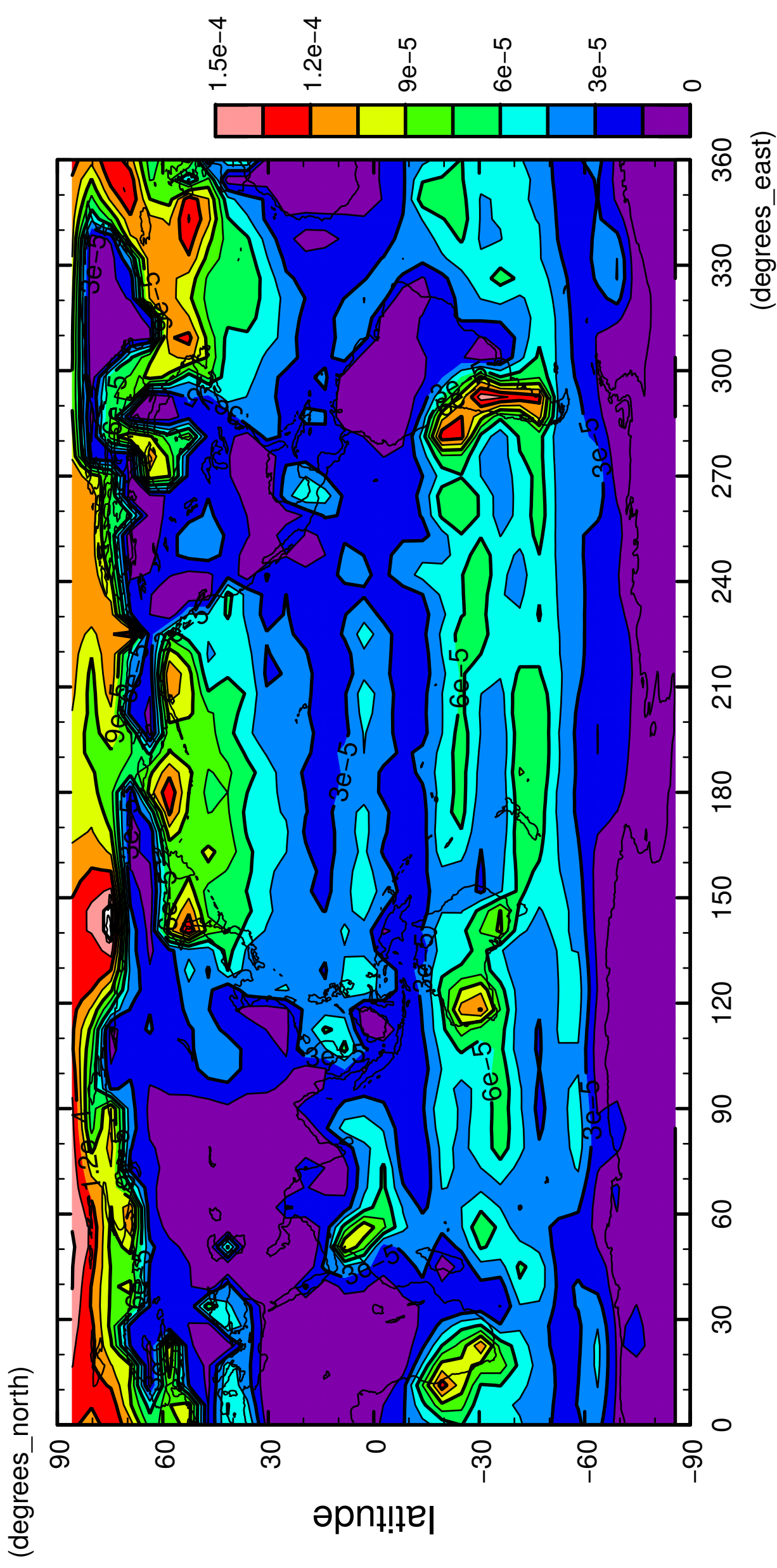


longitude

CONTOUR INTERVAL = 1.500E-05

10/12

precipitation (rain + snow)

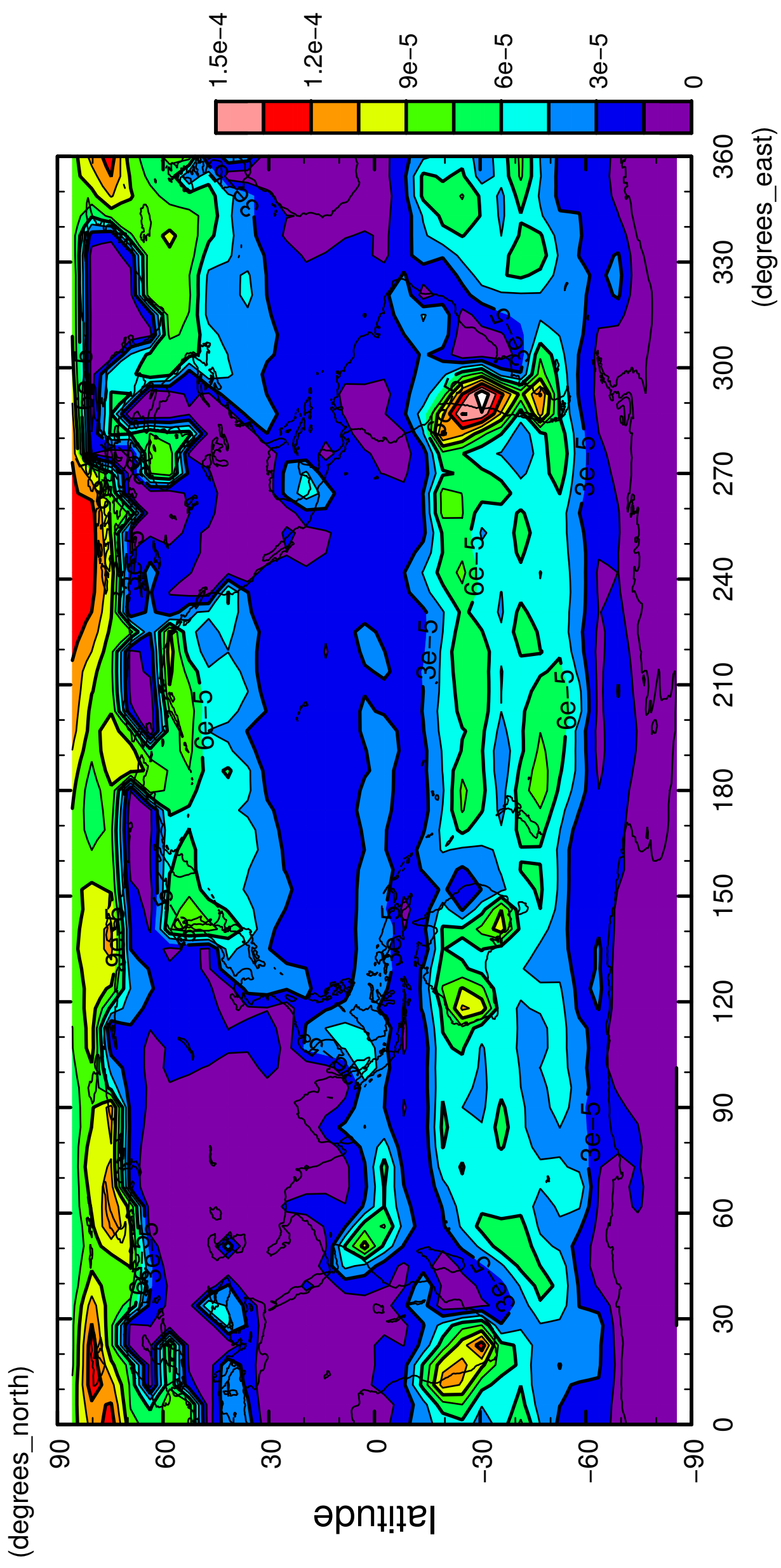


longitude

CONTOUR INTERVAL = 1.500E-05

11/12

precipitation (rain + snow)



12/12

precipitation (rain + snow)

