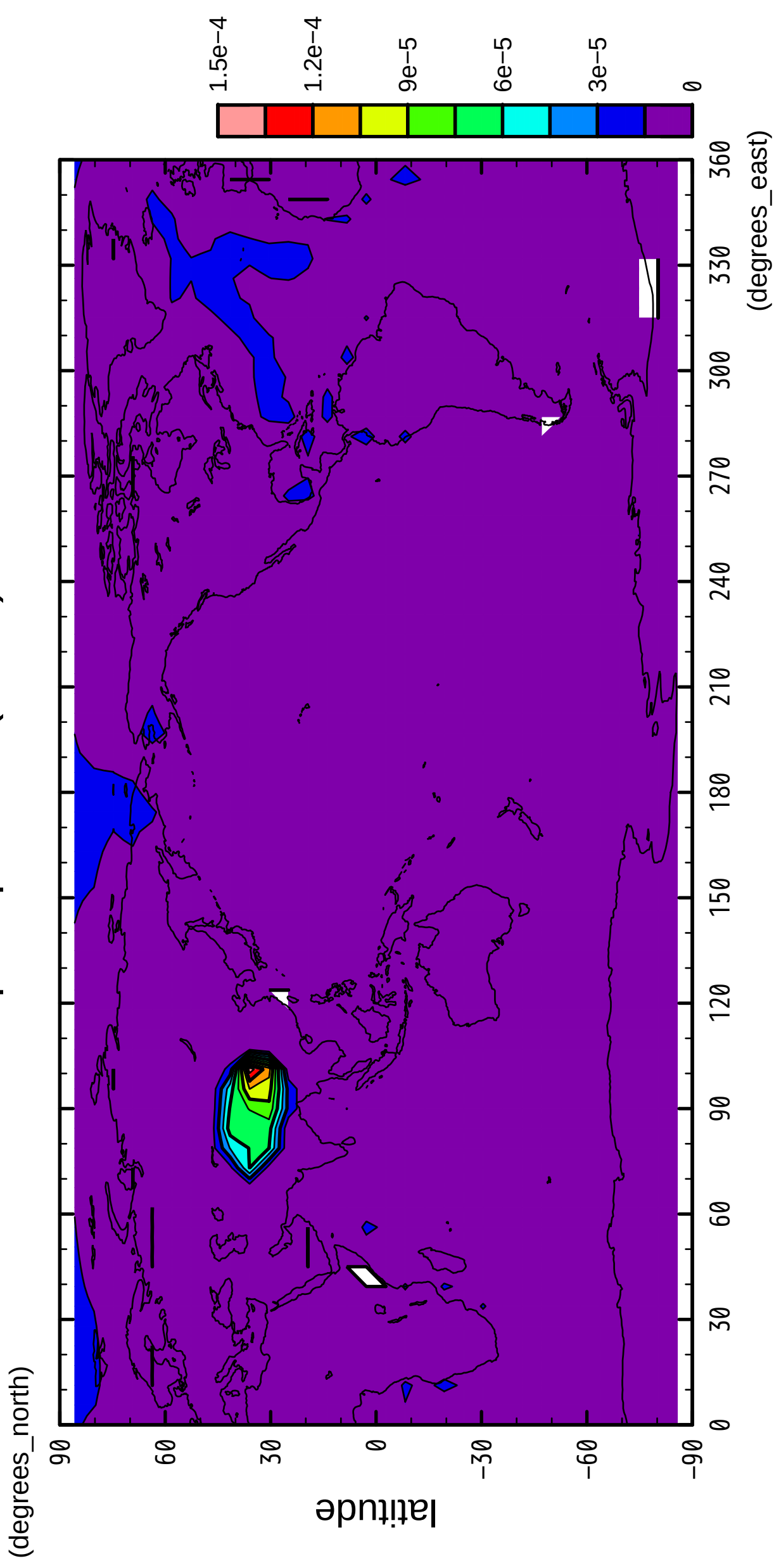


1/12

precipitation (snow)

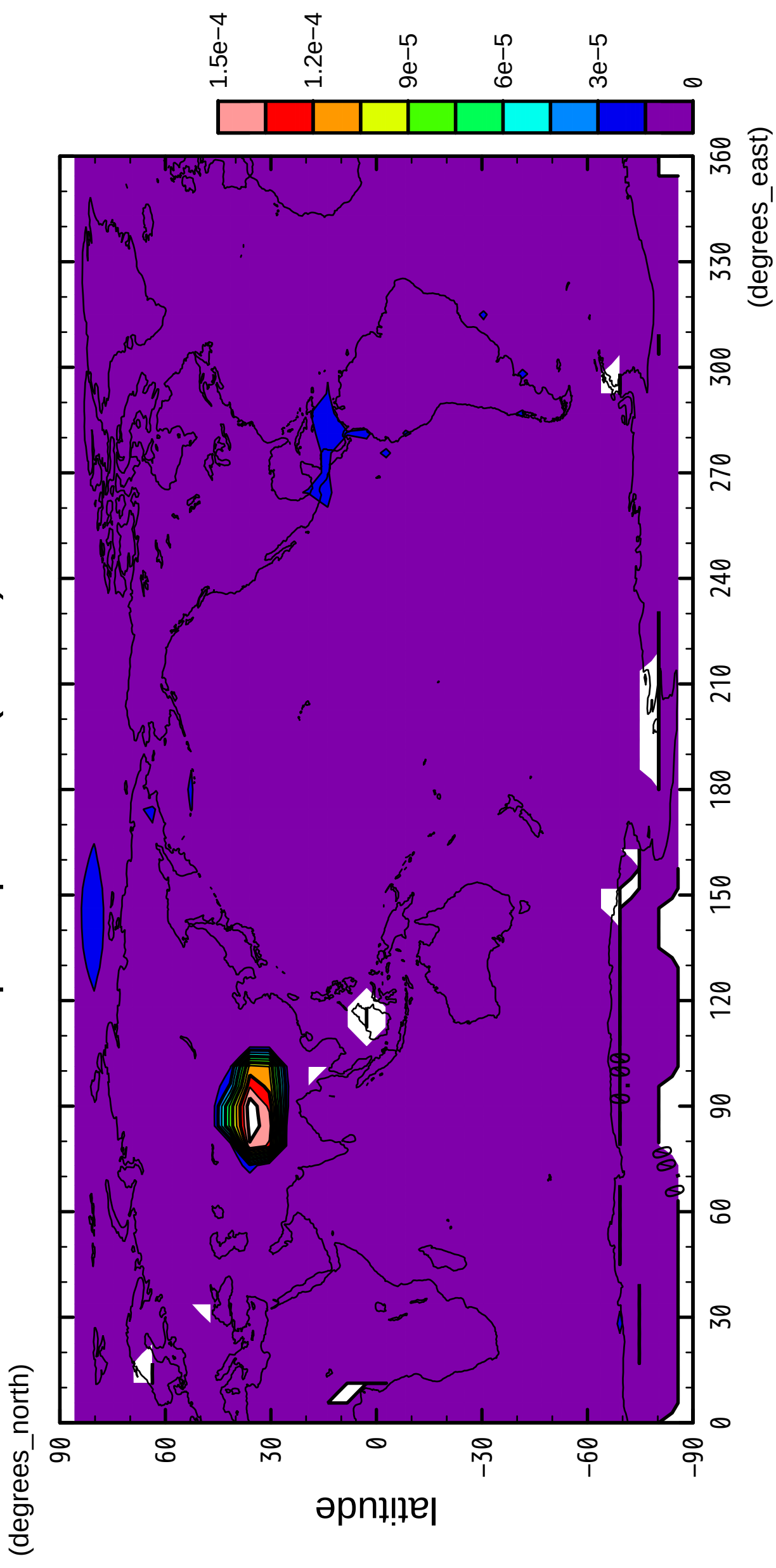


longitude

CONTOUR INTERVAL = 1.500E-05

2/12

precipitation (snow)

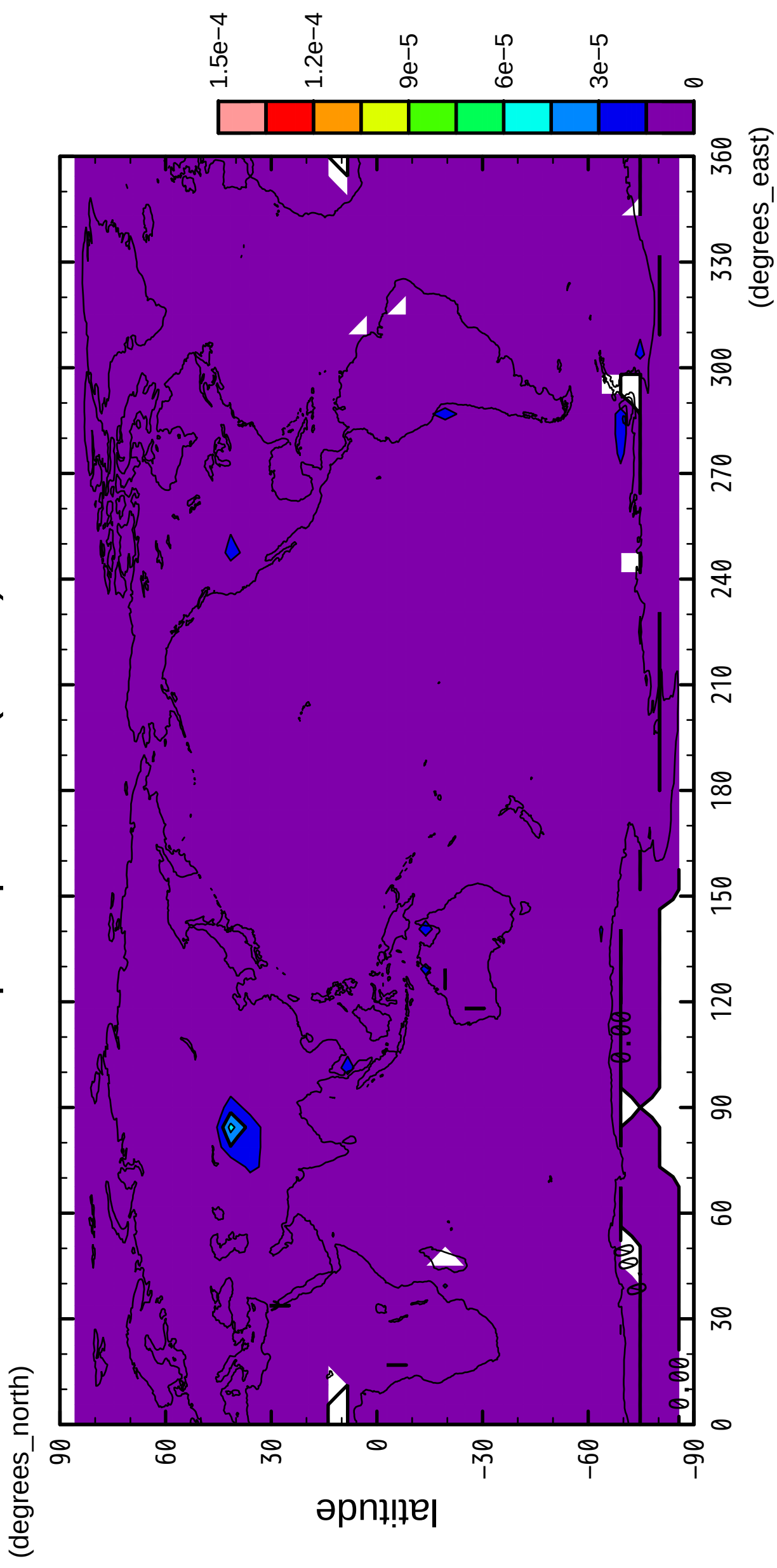


longitude

CONTOUR INTERVAL = 1.500E-05

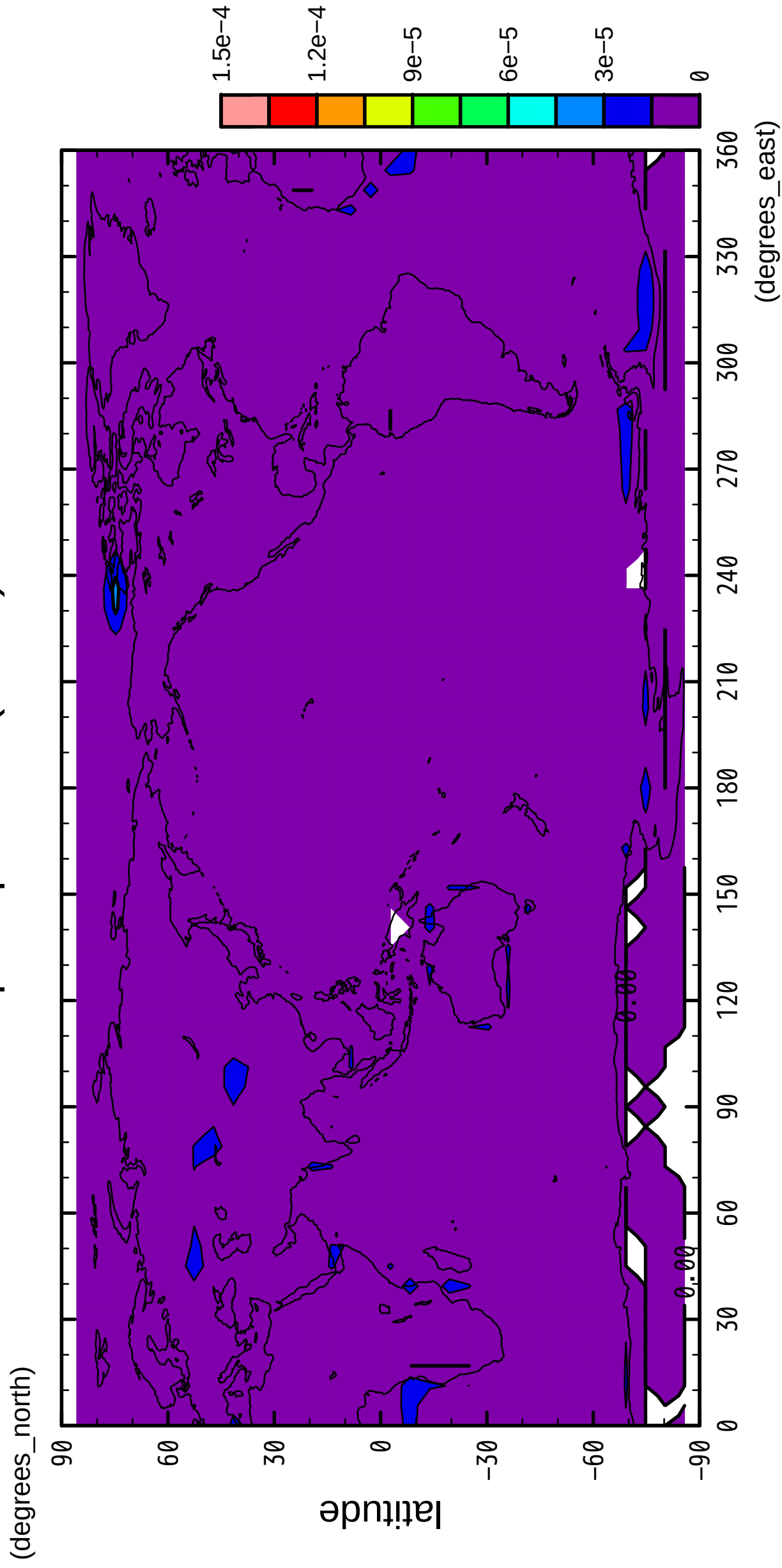
3/12

precipitation (snow)



4/12

precipitation (snow)

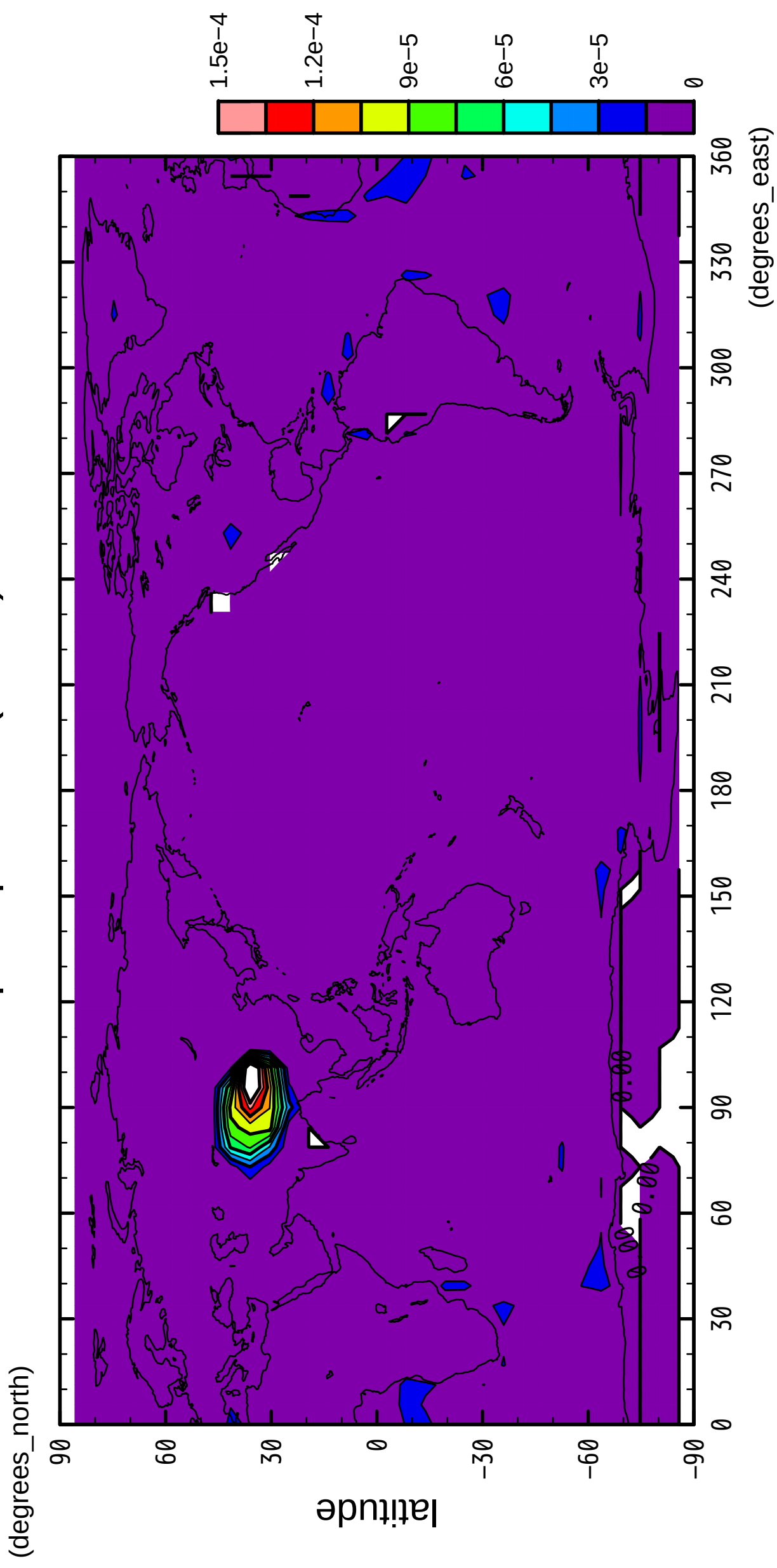


longitude

CONTOUR INTERVAL = 1.500E-05

5/12

precipitation (snow)

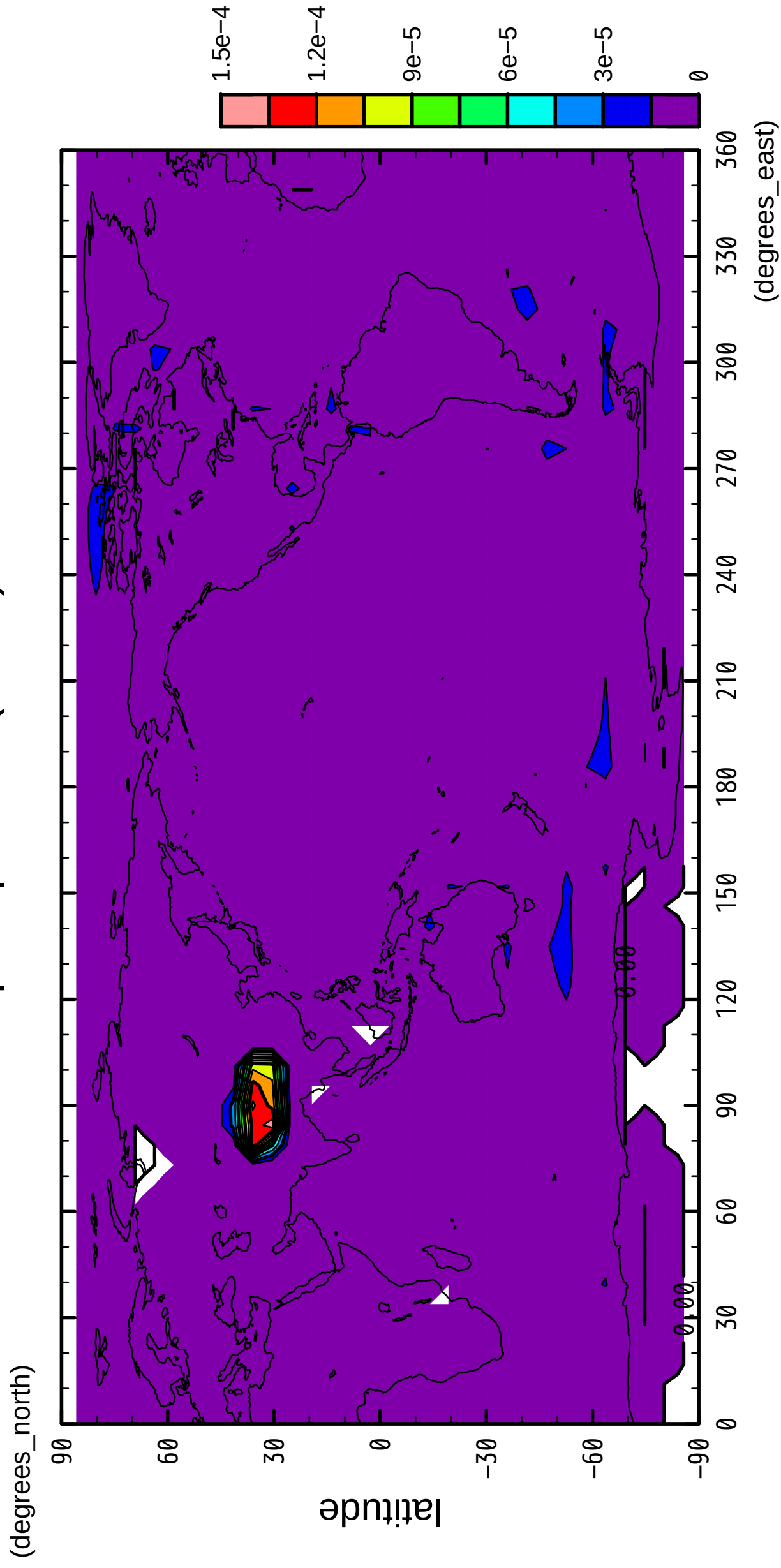


longitude

CONTOUR INTERVAL = 1.500E-05

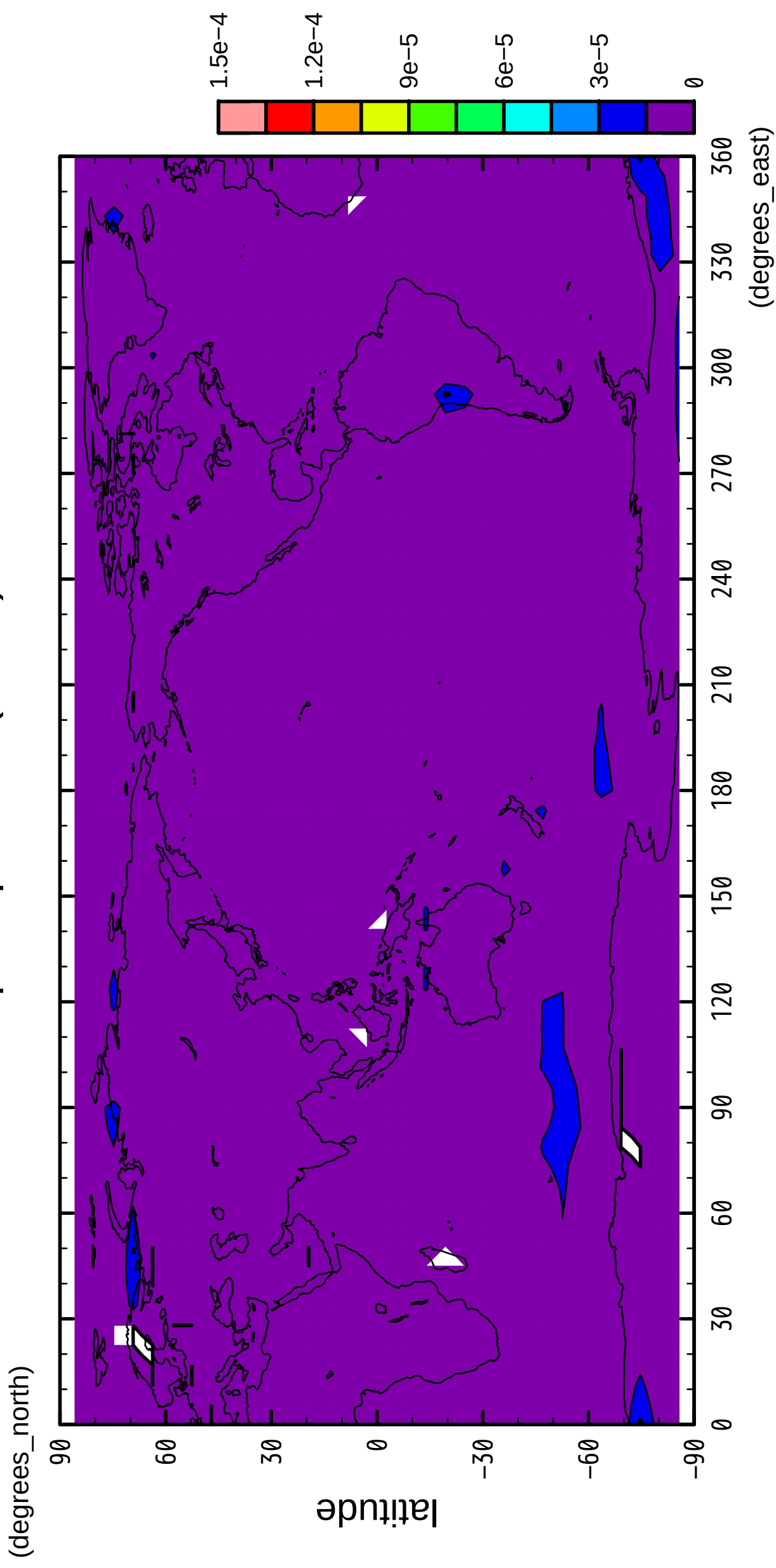
6/12

precipitation (snow)



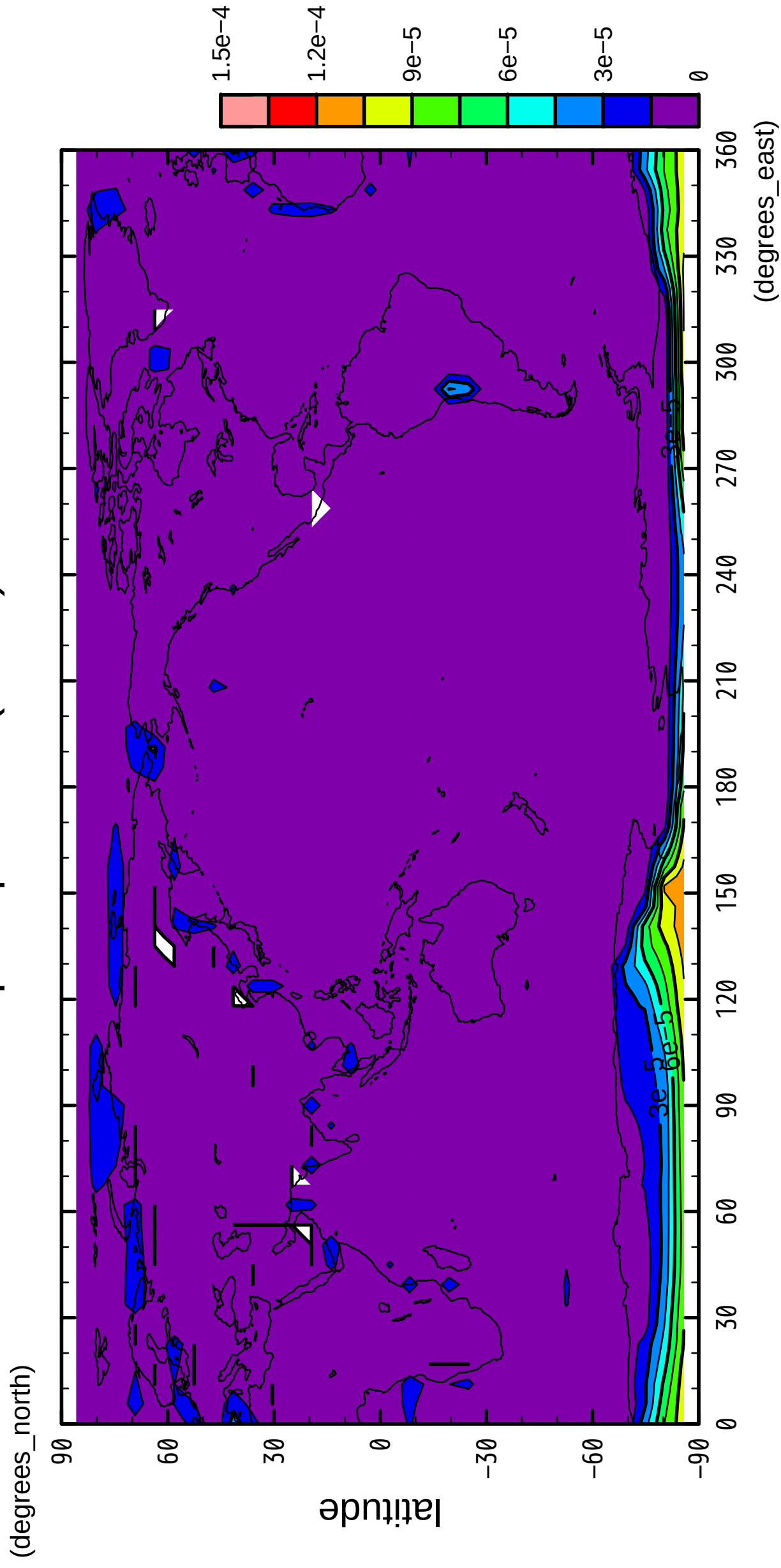
7/12

precipitation (snow)



8/12

precipitation (snow)

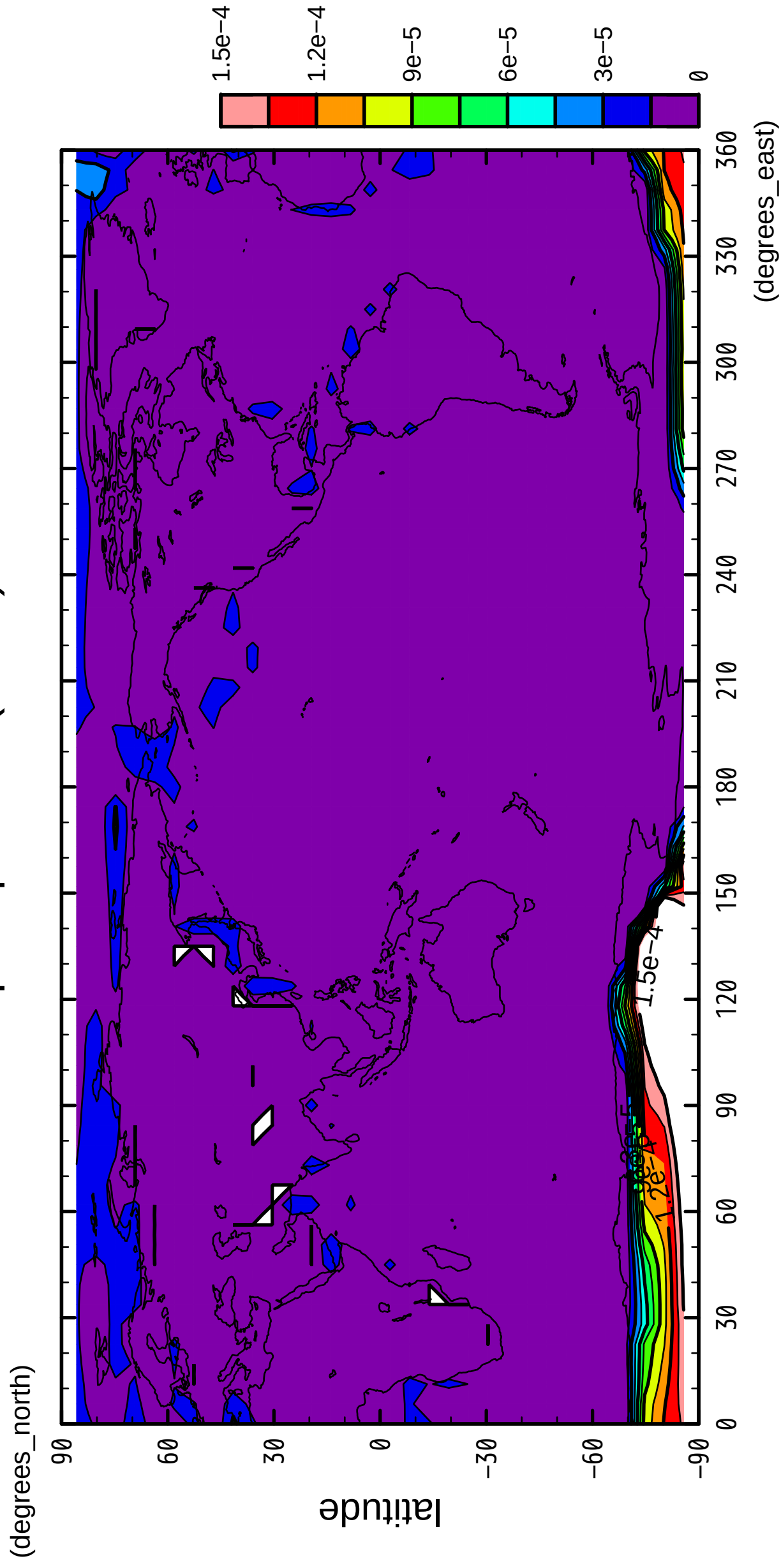


longitude

CONTOUR INTERVAL = 1.500E-05

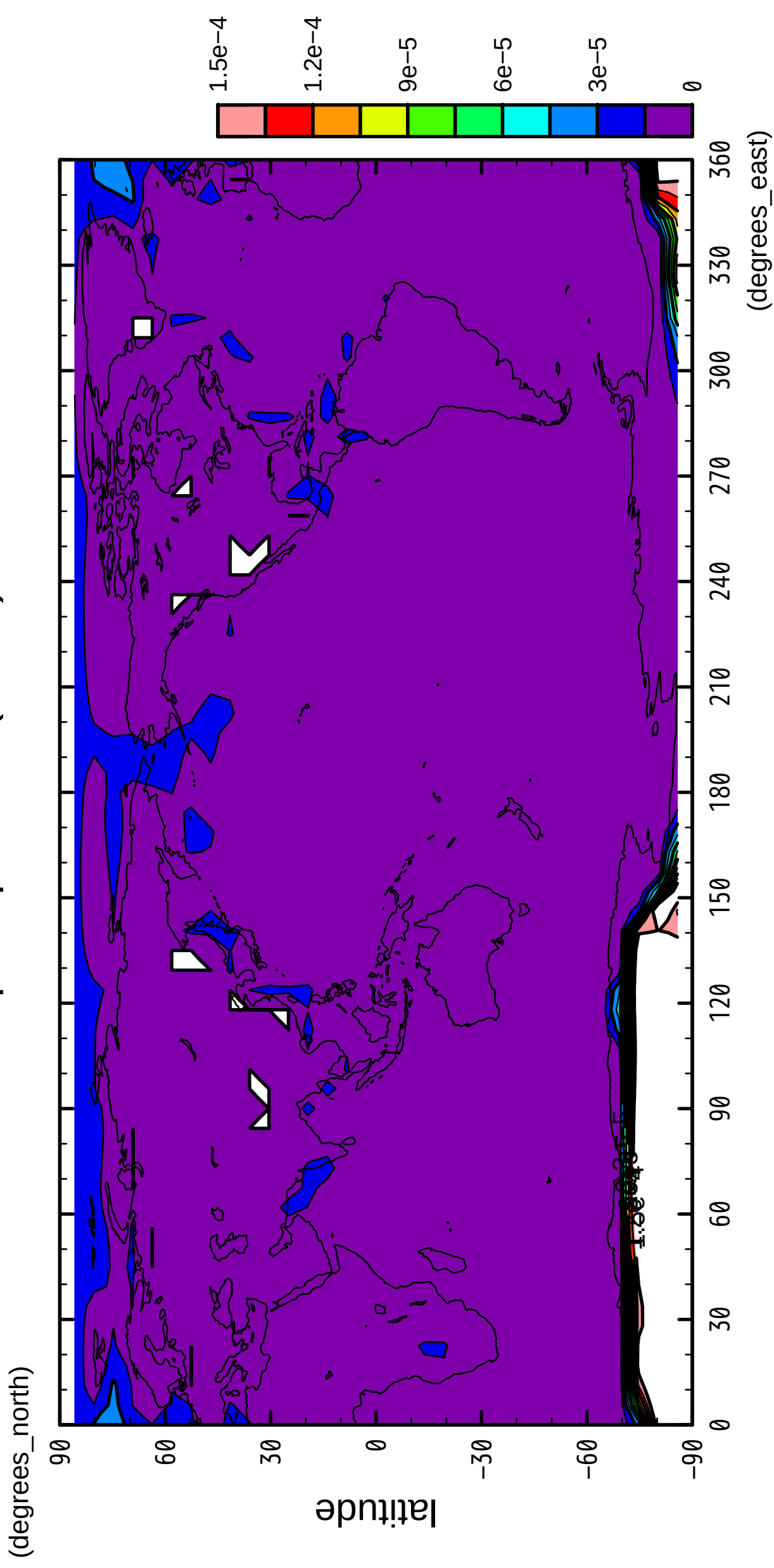
9/12

precipitation (snow)



10/12

precipitation (snow)

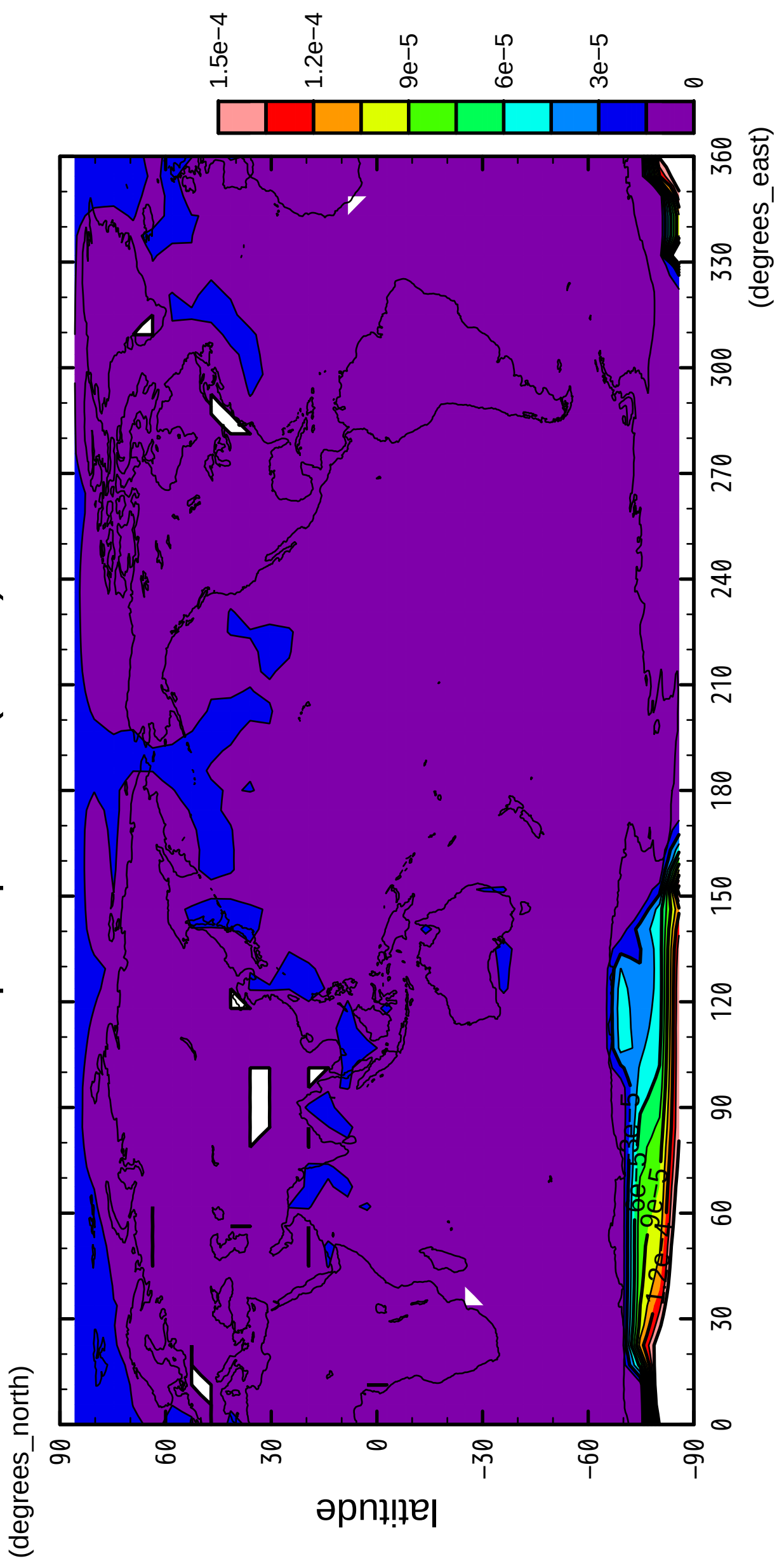


longitude

CONTOUR INTERVAL = 1.500E-05

11/12

precipitation (snow)



12/12

precipitation (snow)

