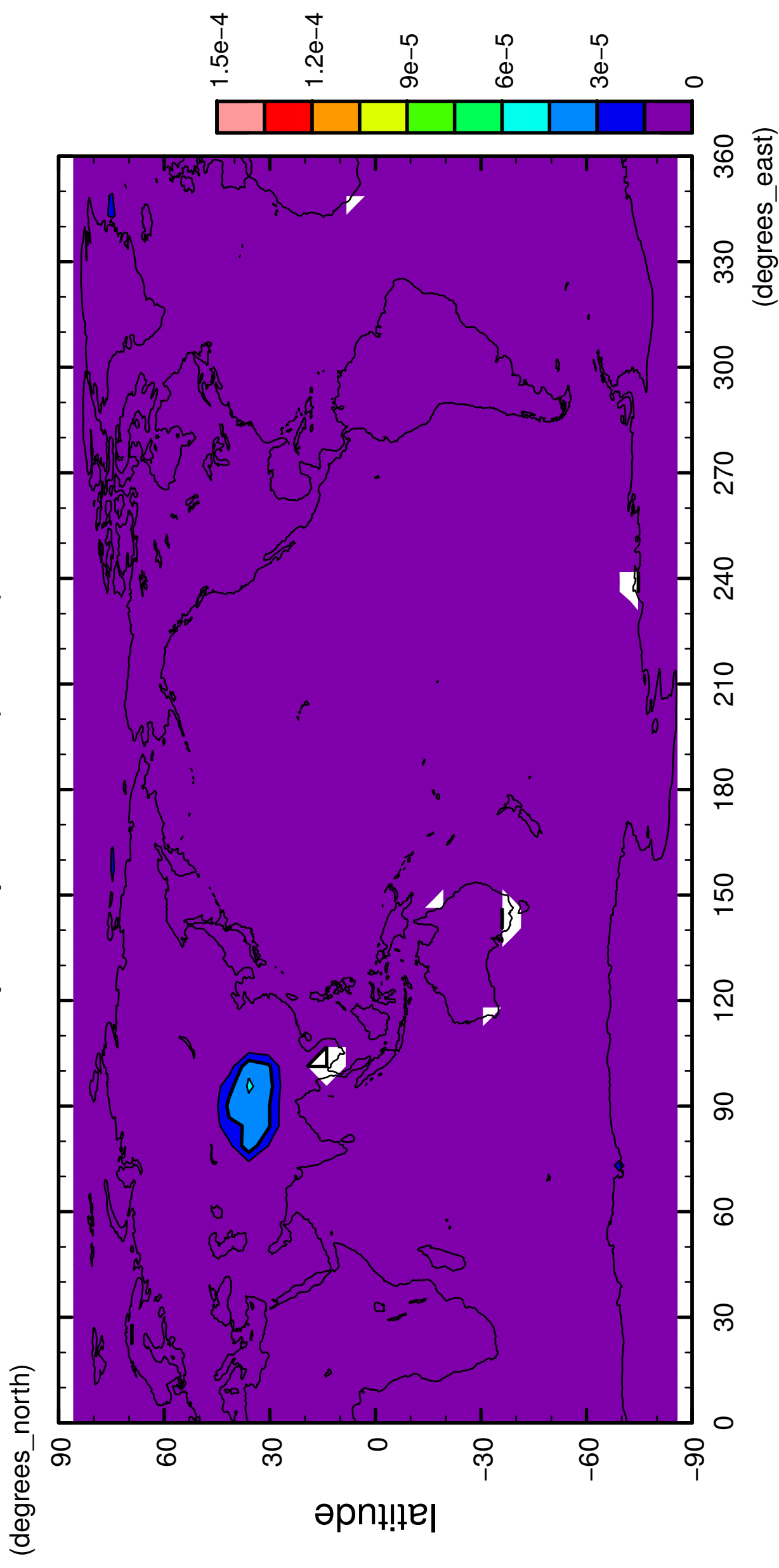


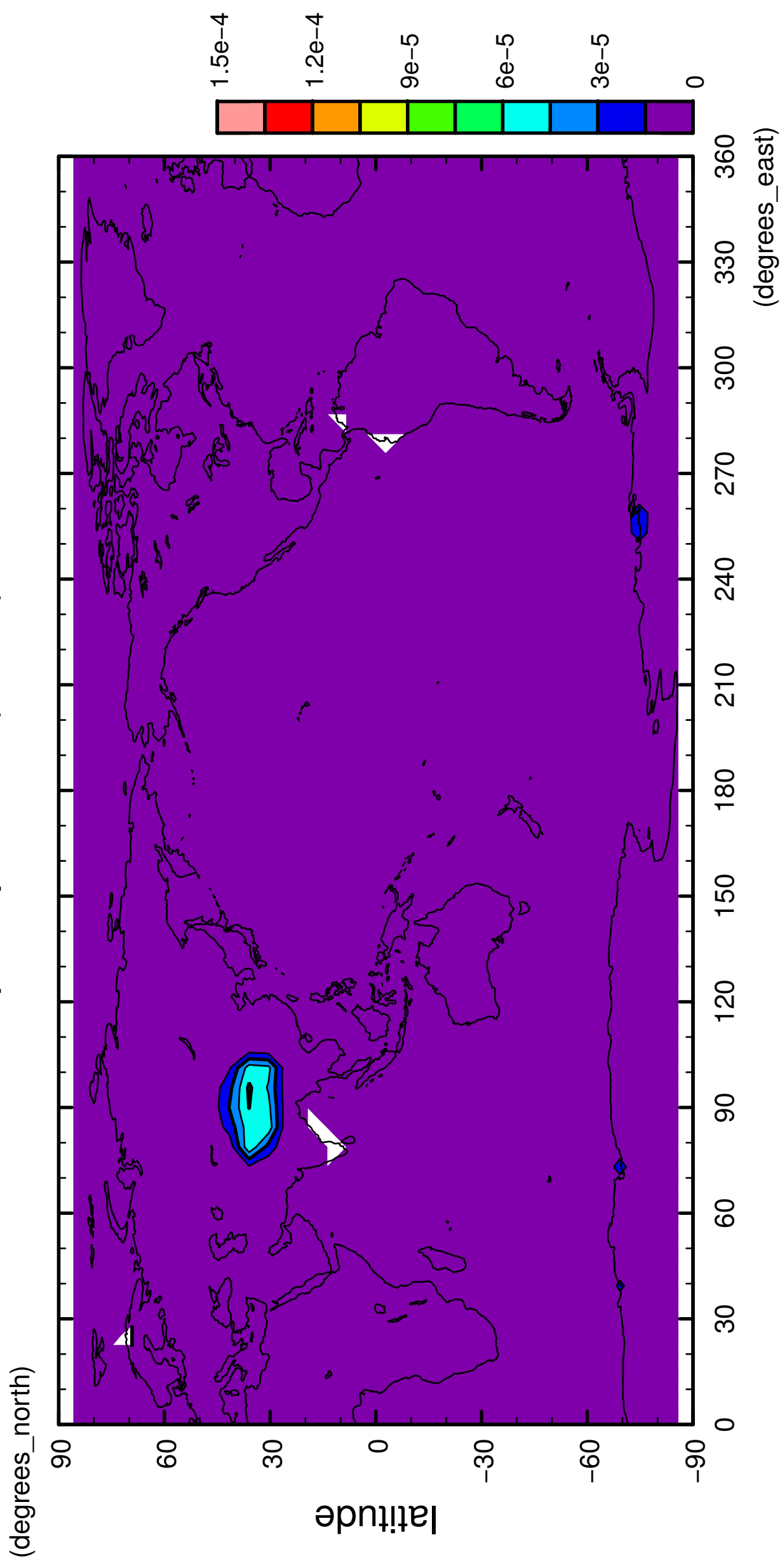
1/12

precipitation (snow)



2/12

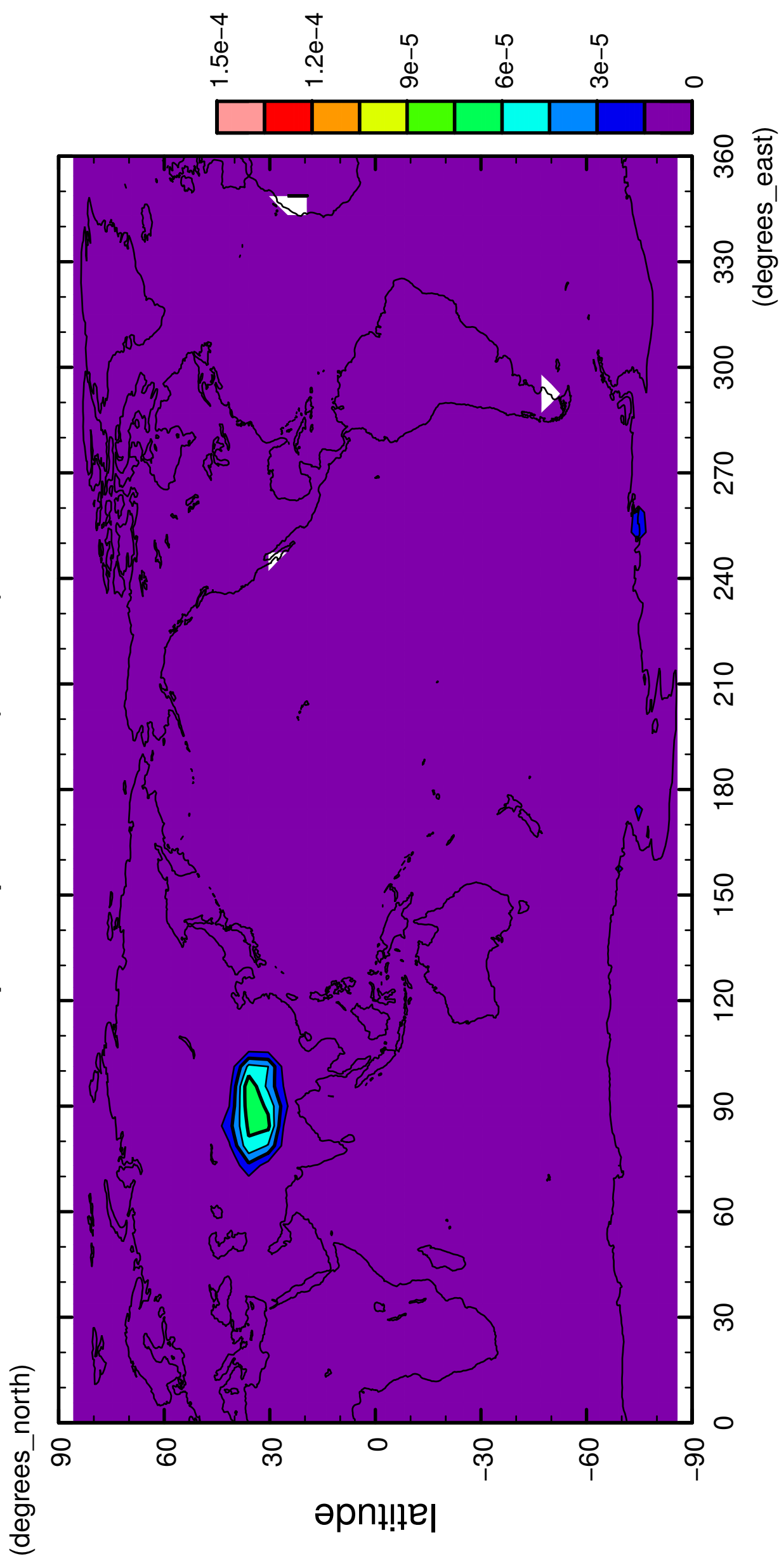
precipitation (snow)



longitude
CONTOUR INTERVAL = 1.500E-05

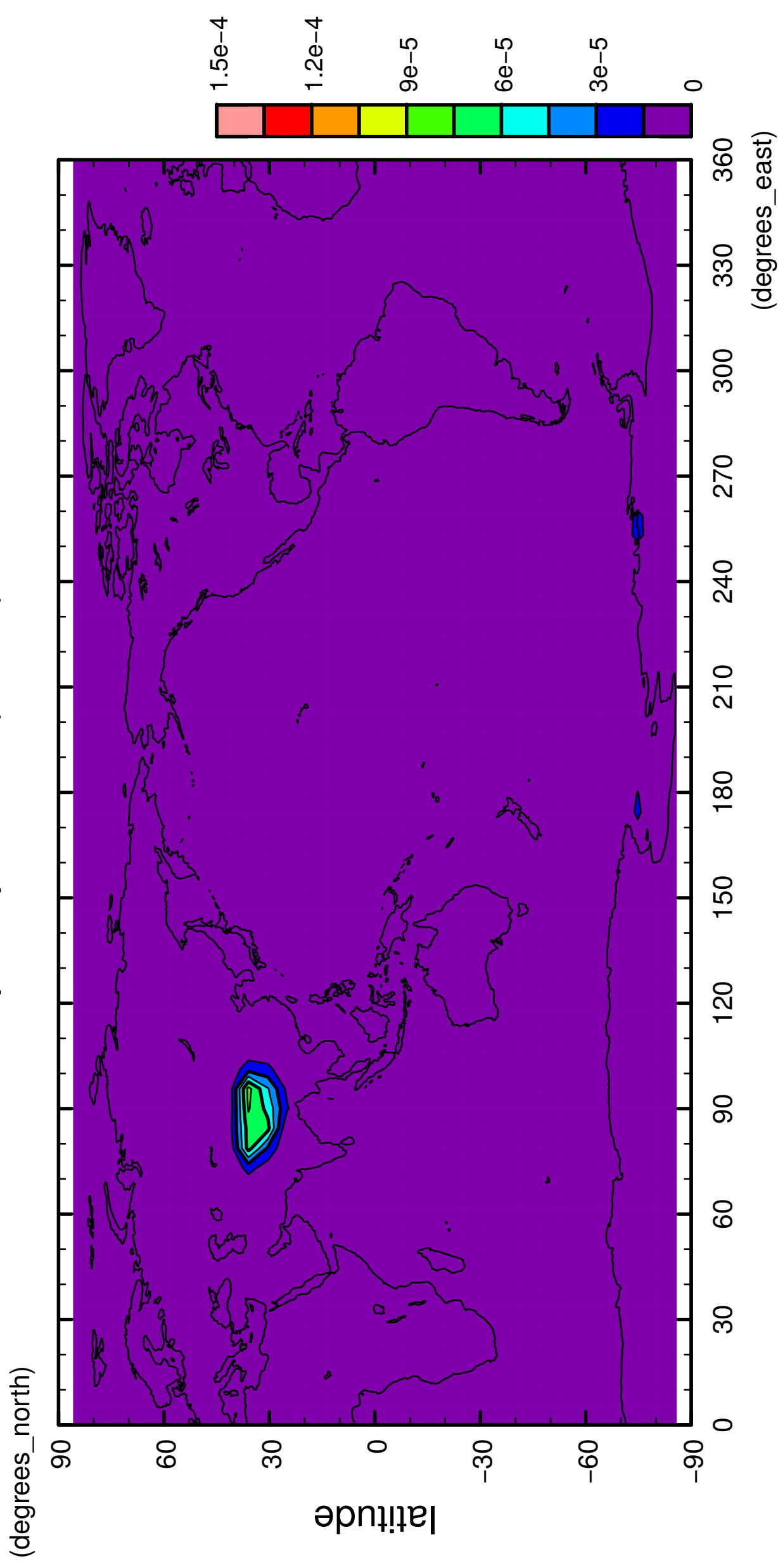
3/12

precipitation (snow)



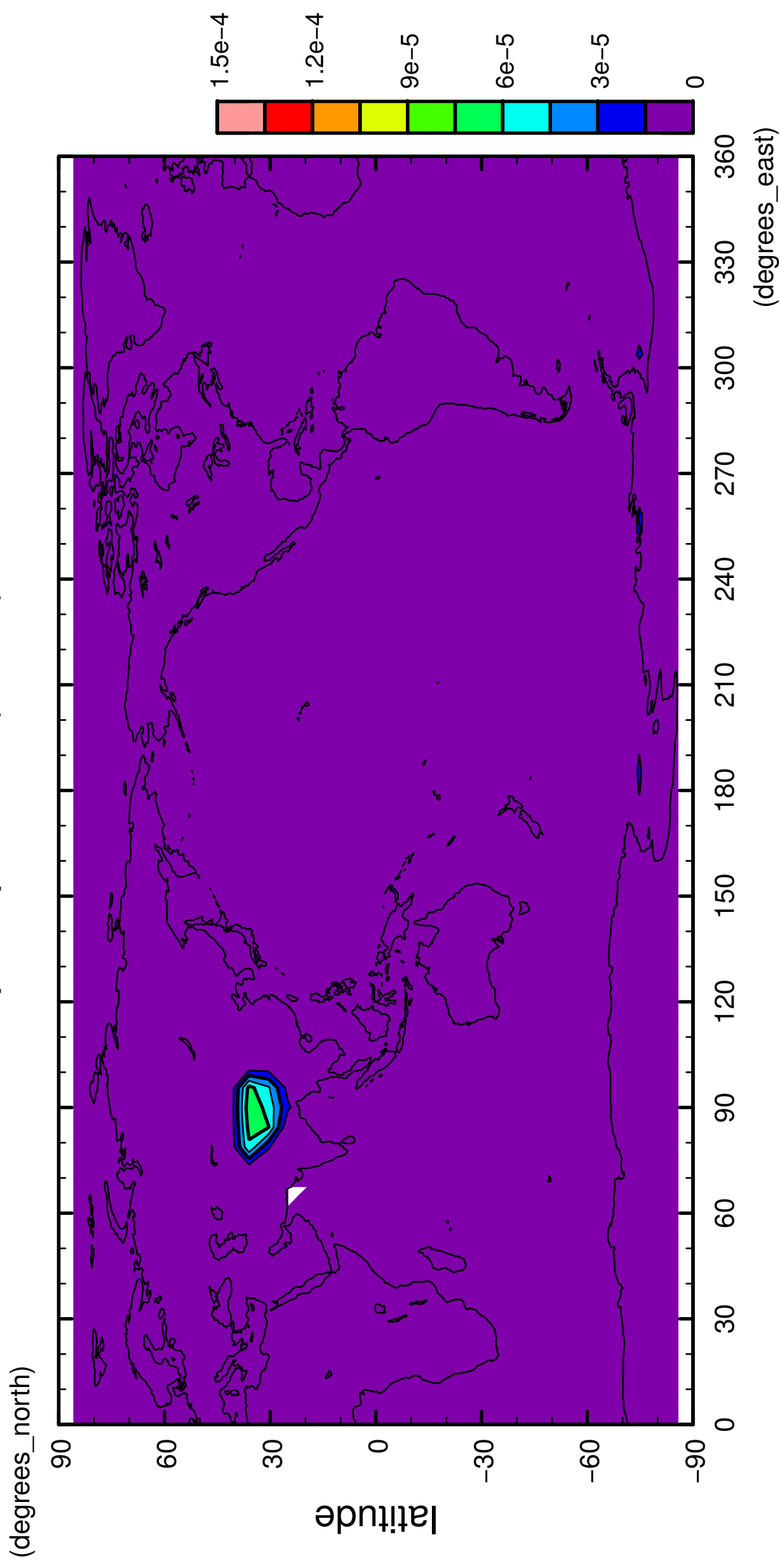
4/12

precipitation (snow)



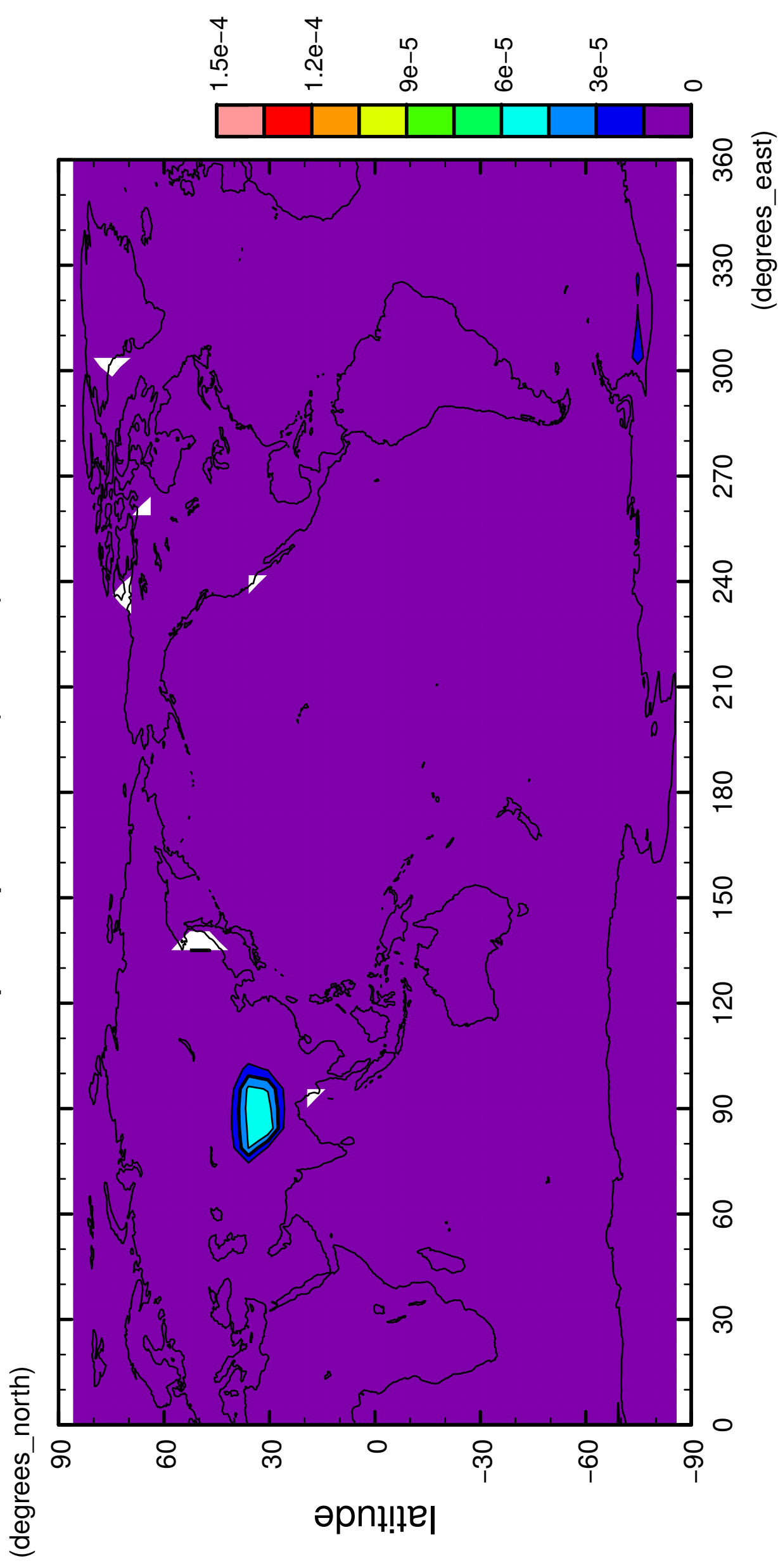
5/12

precipitation (snow)



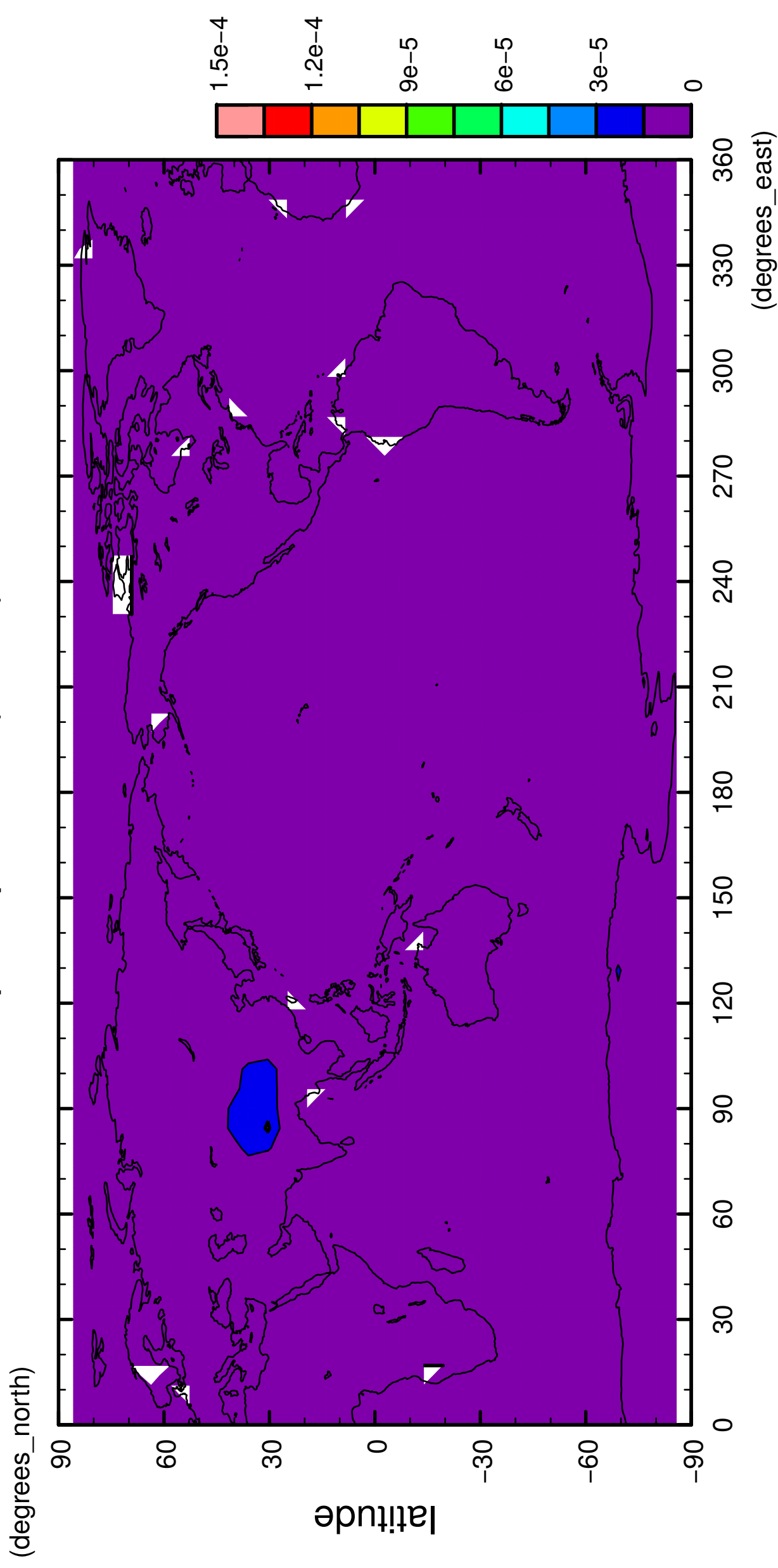
6/12

precipitation (snow)



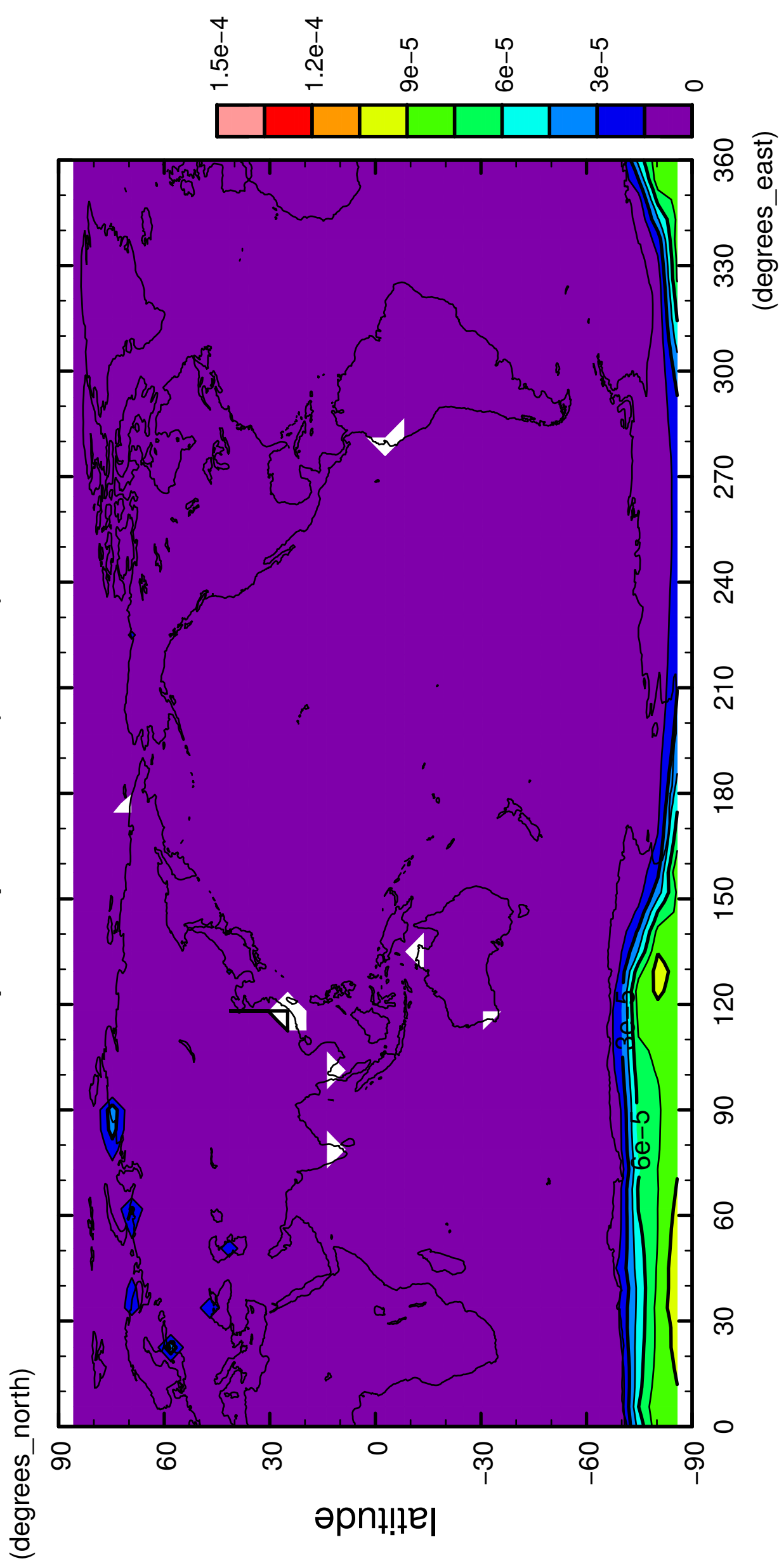
7/12

precipitation (snow)



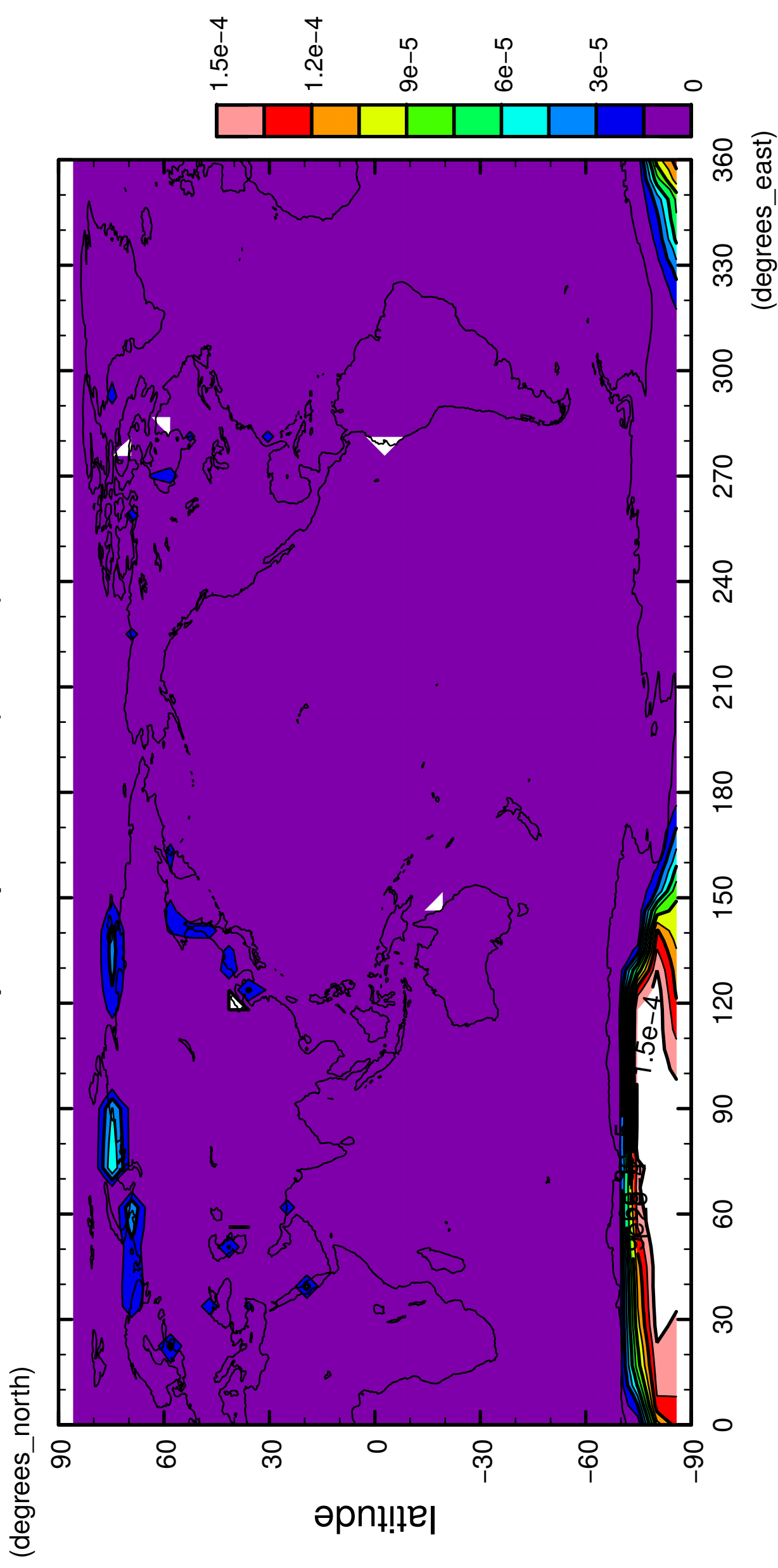
8/12

precipitation (snow)



9/12

precipitation (snow)

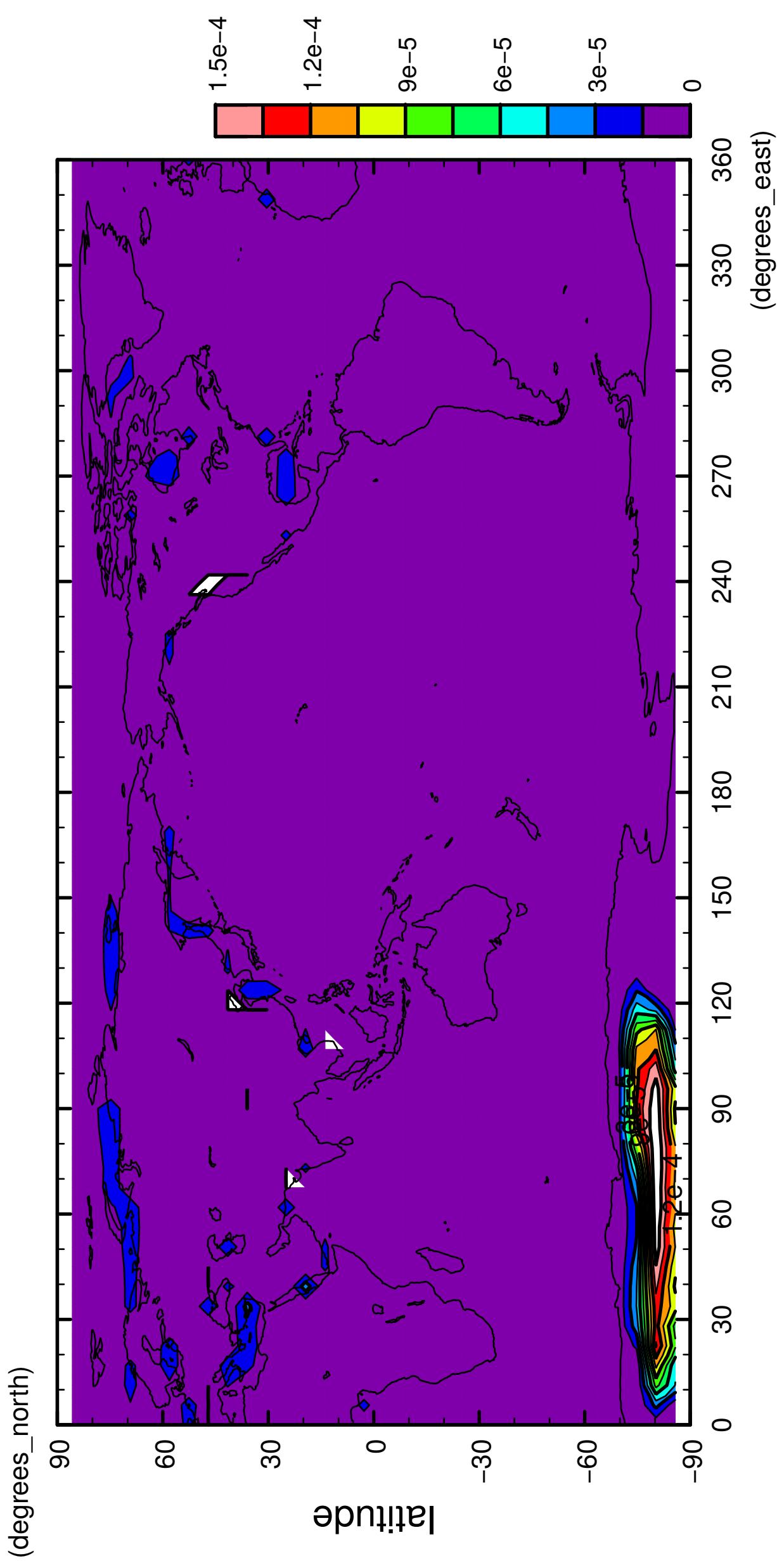


longitude

CONTOUR INTERVAL = $1.500E-05$

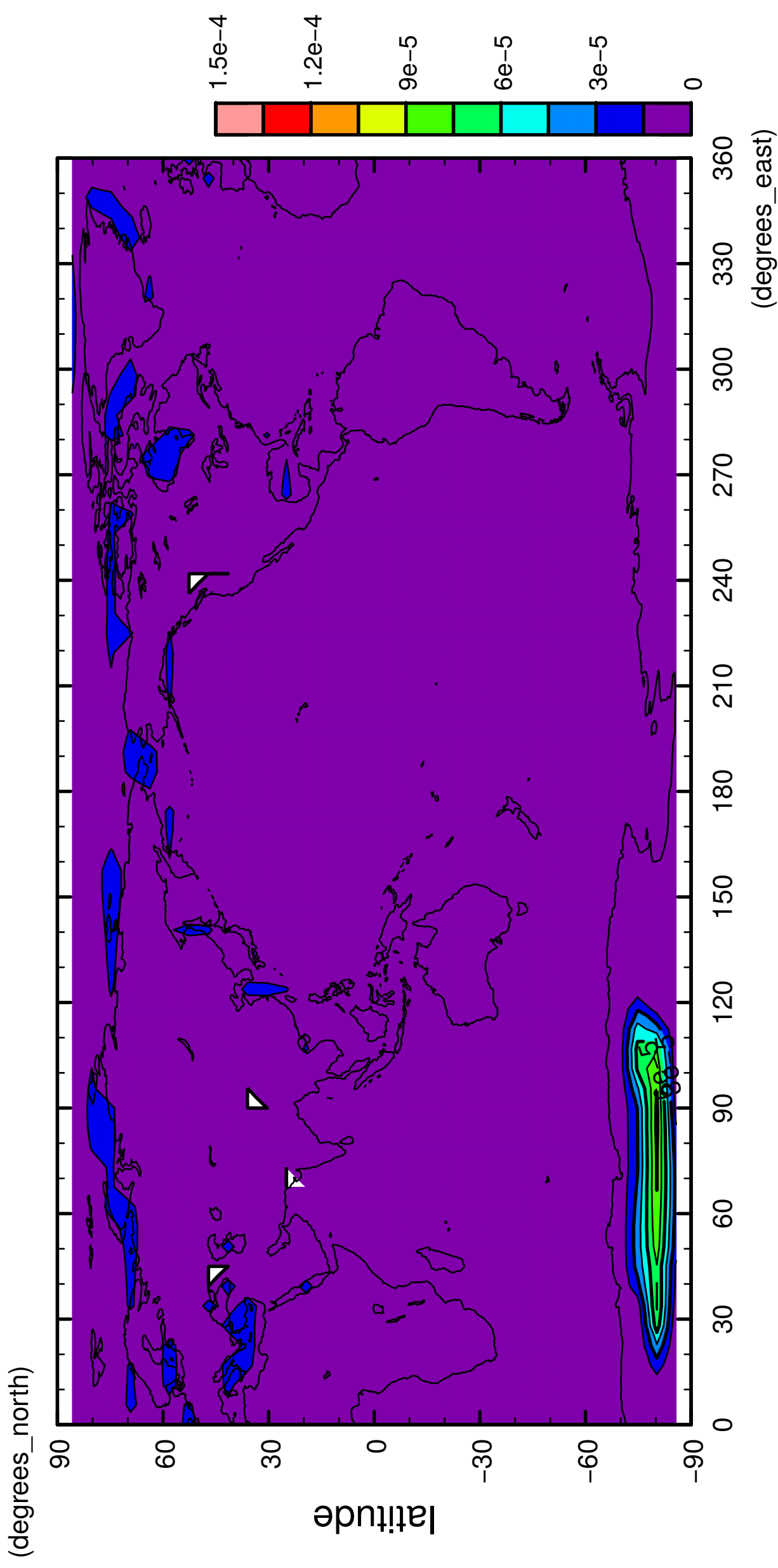
10/12

precipitation (snow)



11/12

precipitation (snow)



12/12

precipitation (snow)

