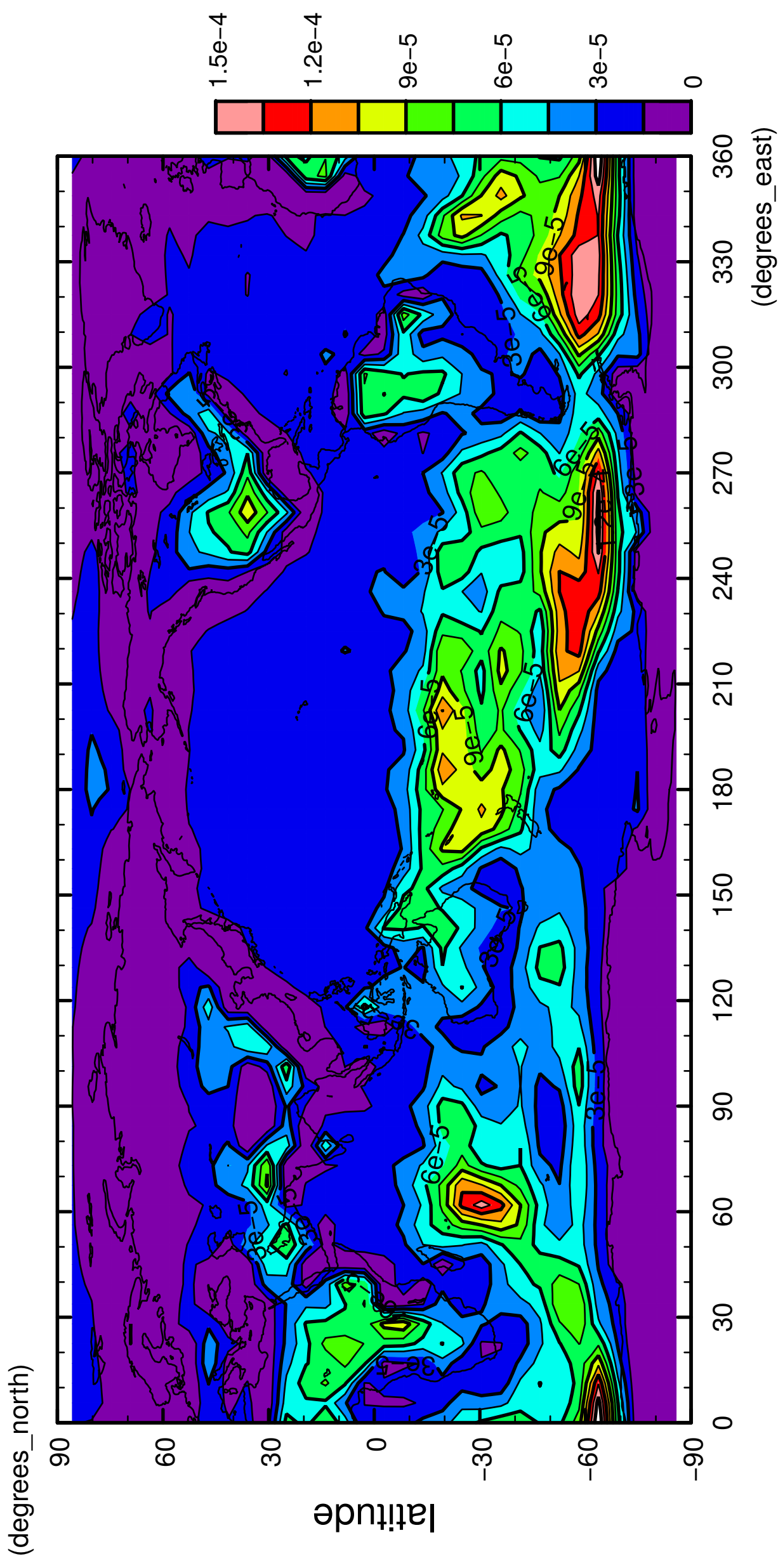


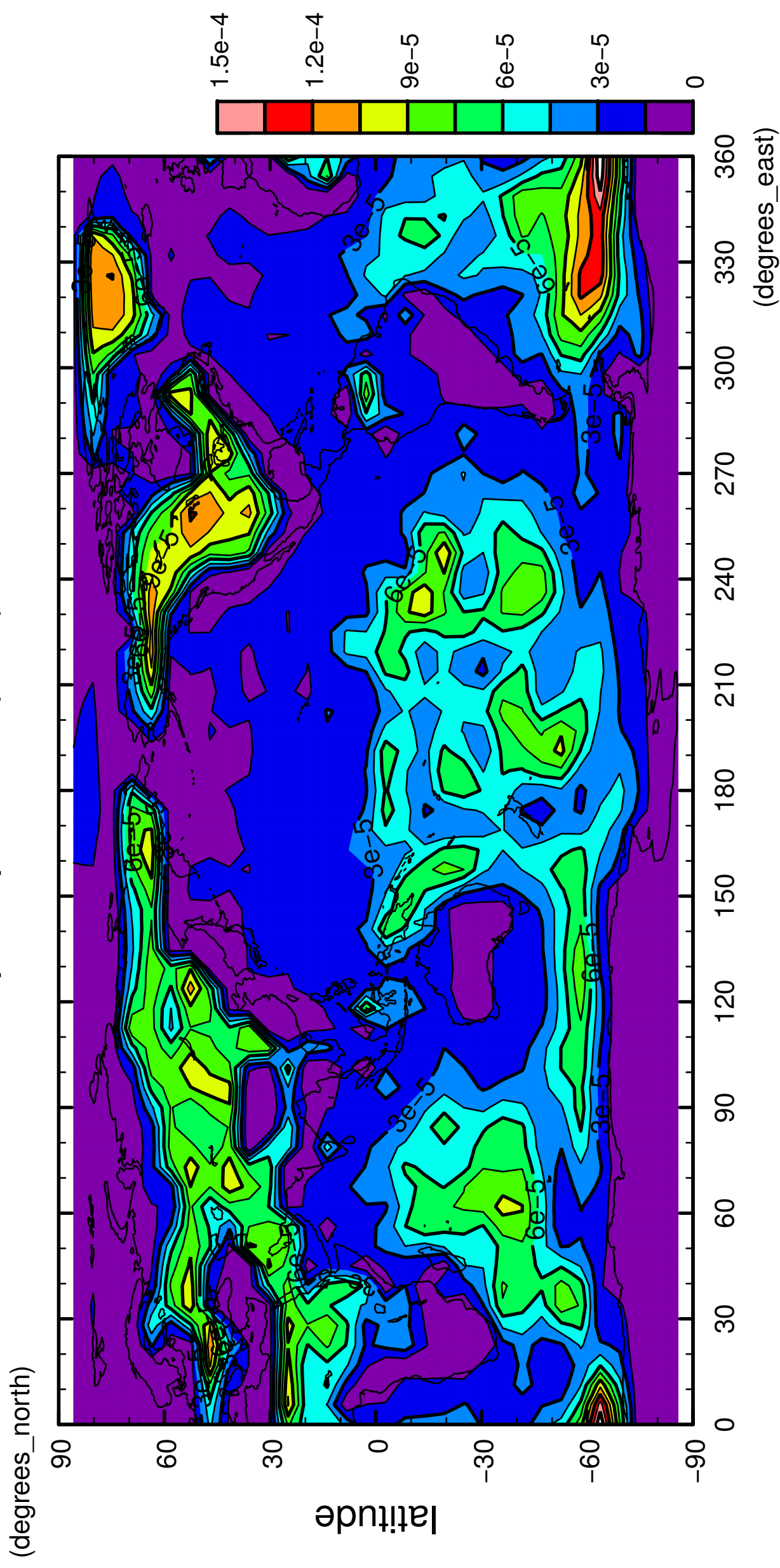
1/12

precipitation (rain)



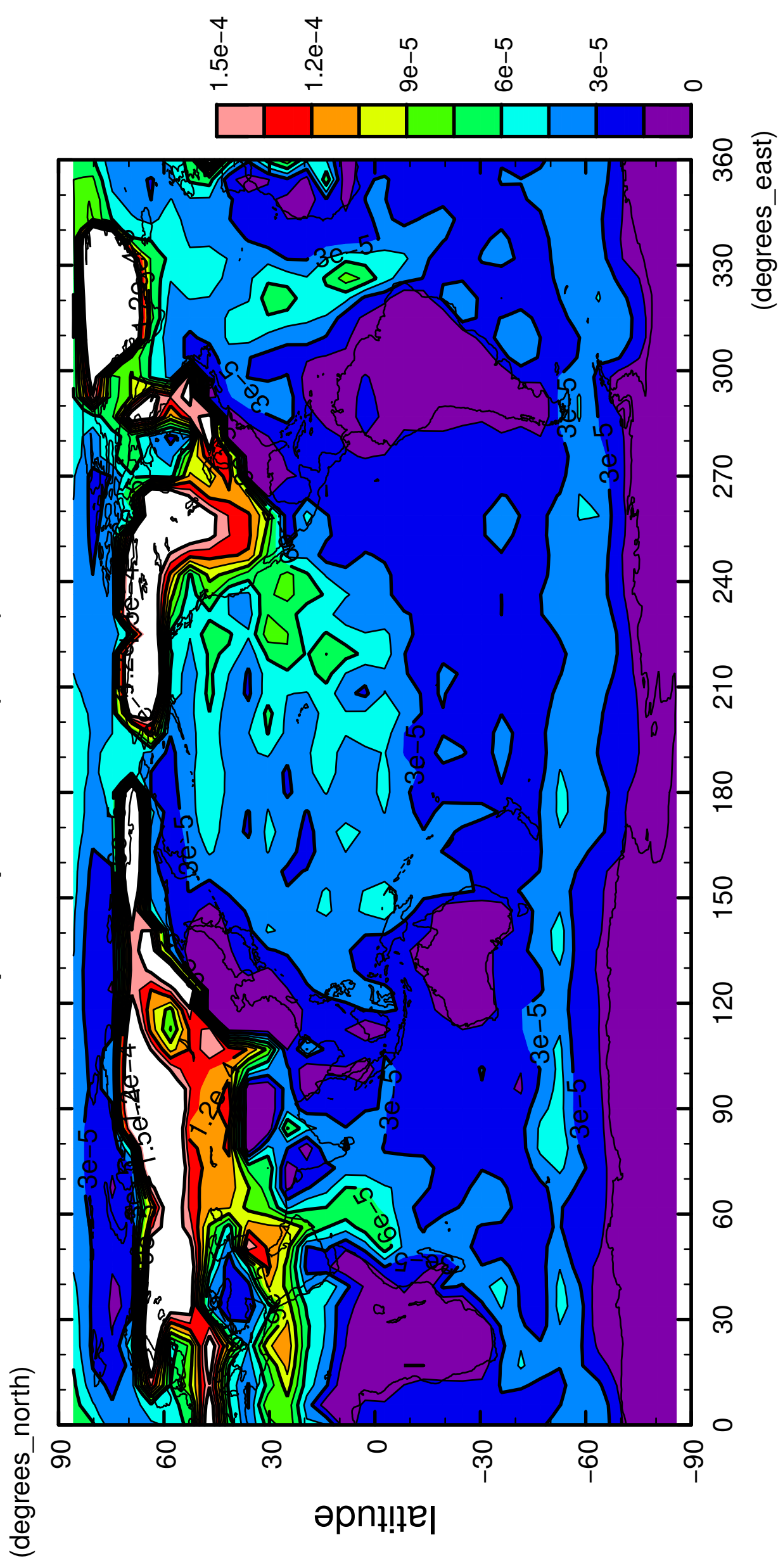
2/12

precipitation (rain)



4/12

precipitation (rain)

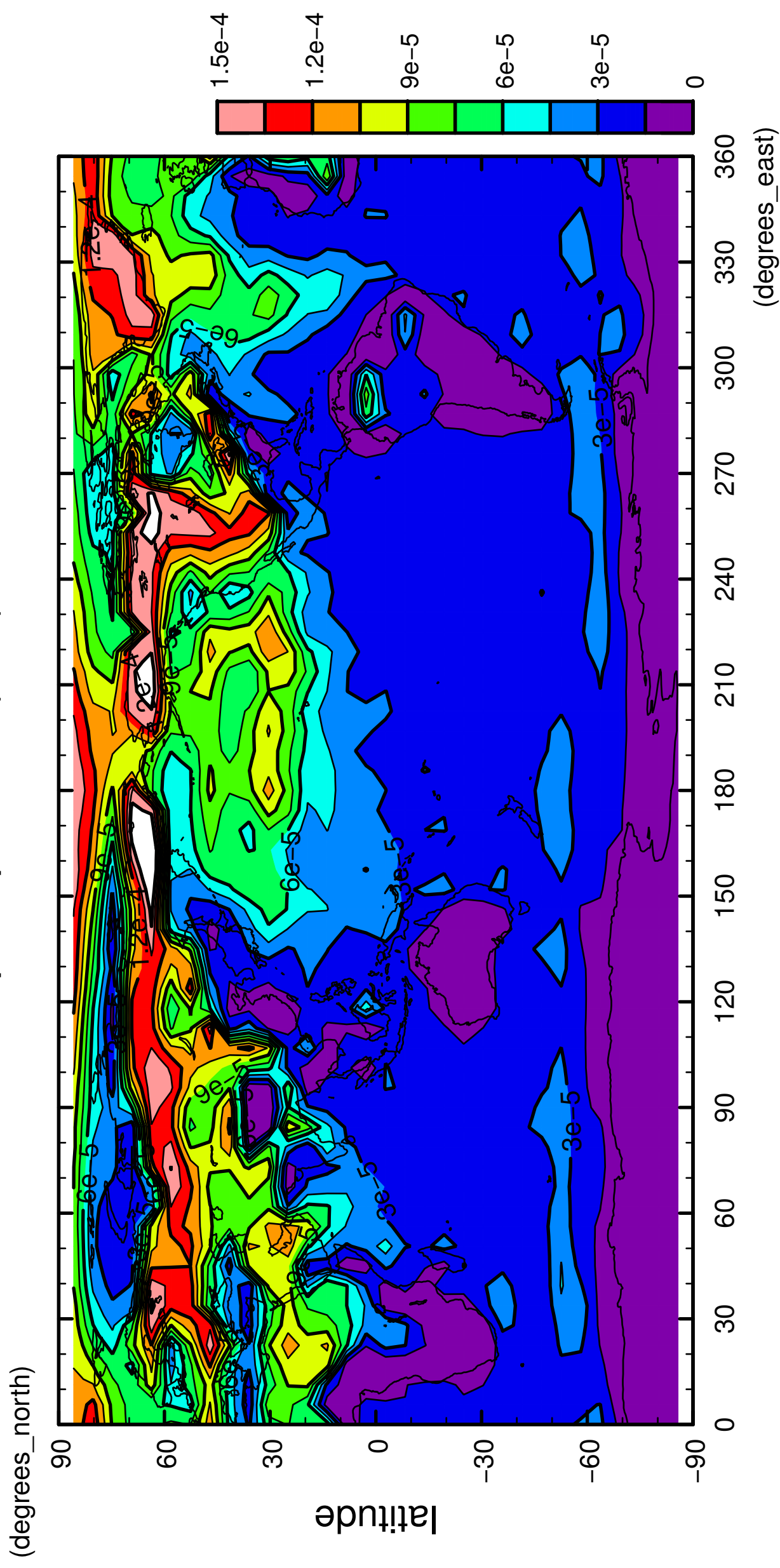


longitude

CONTOUR INTERVAL = 1.500×10^{-5}

5/12

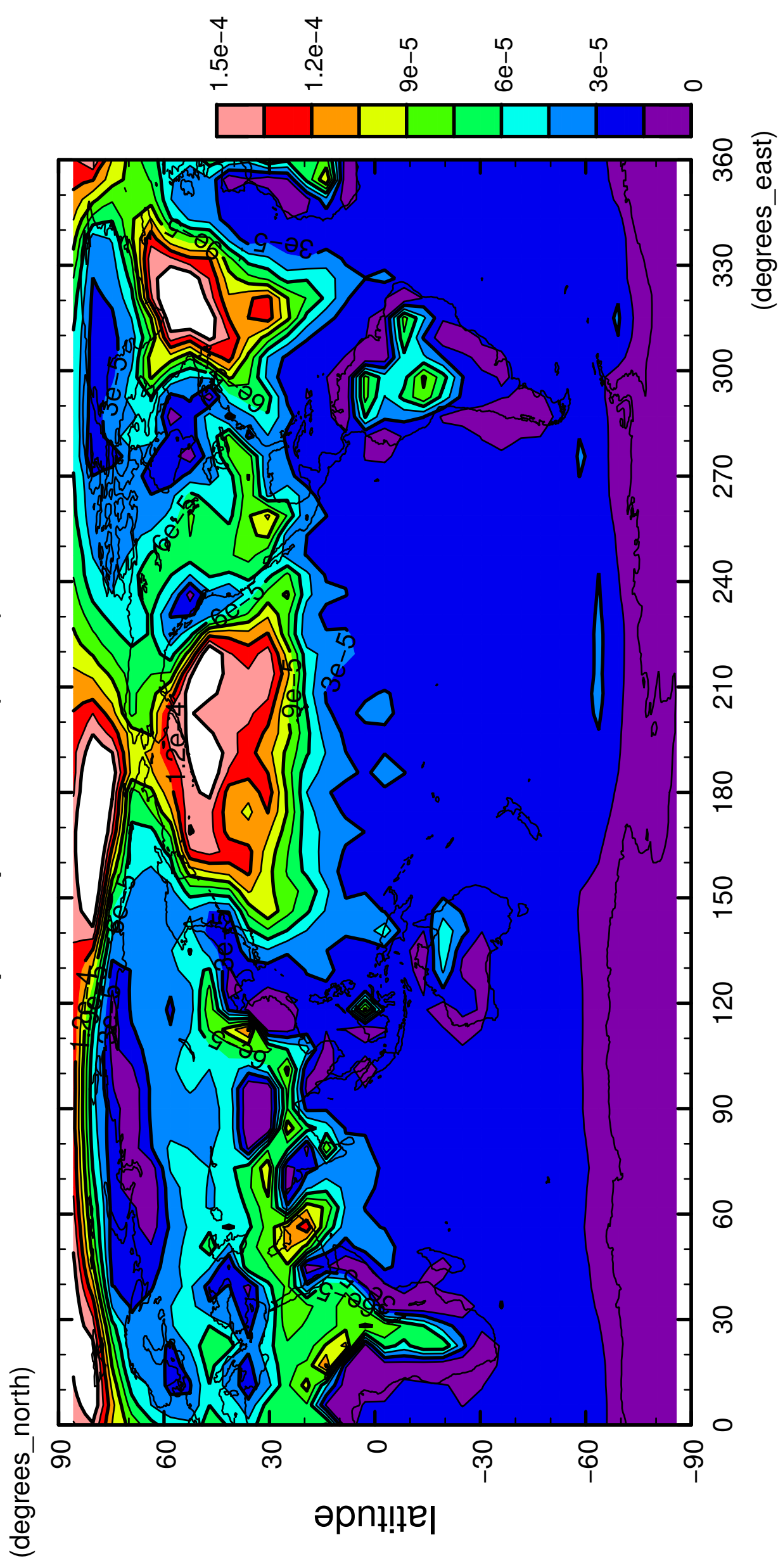
precipitation (rain)



longitude
CONTOUR INTERVAL = 1.500E-05

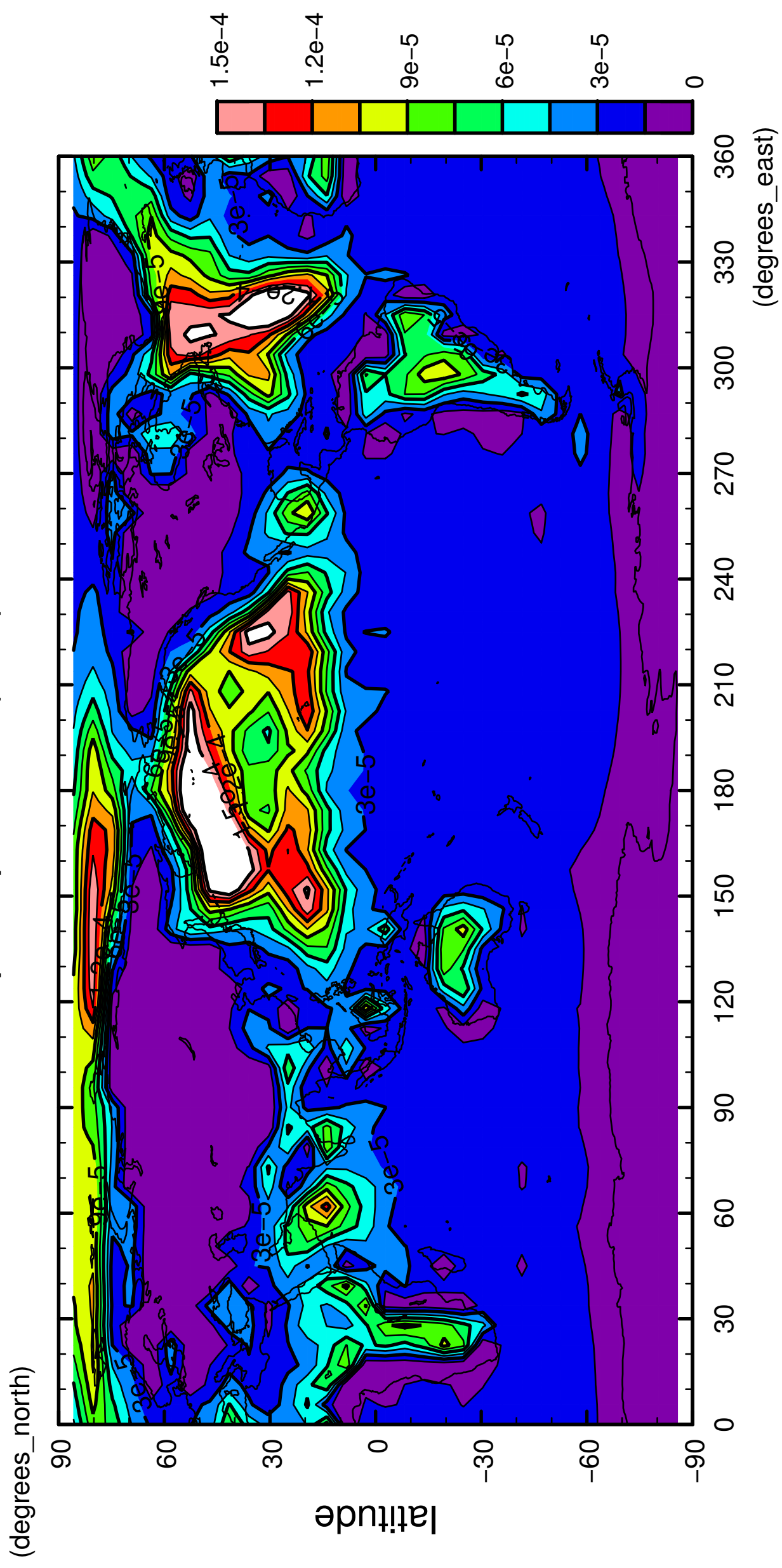
6/12

precipitation (rain)



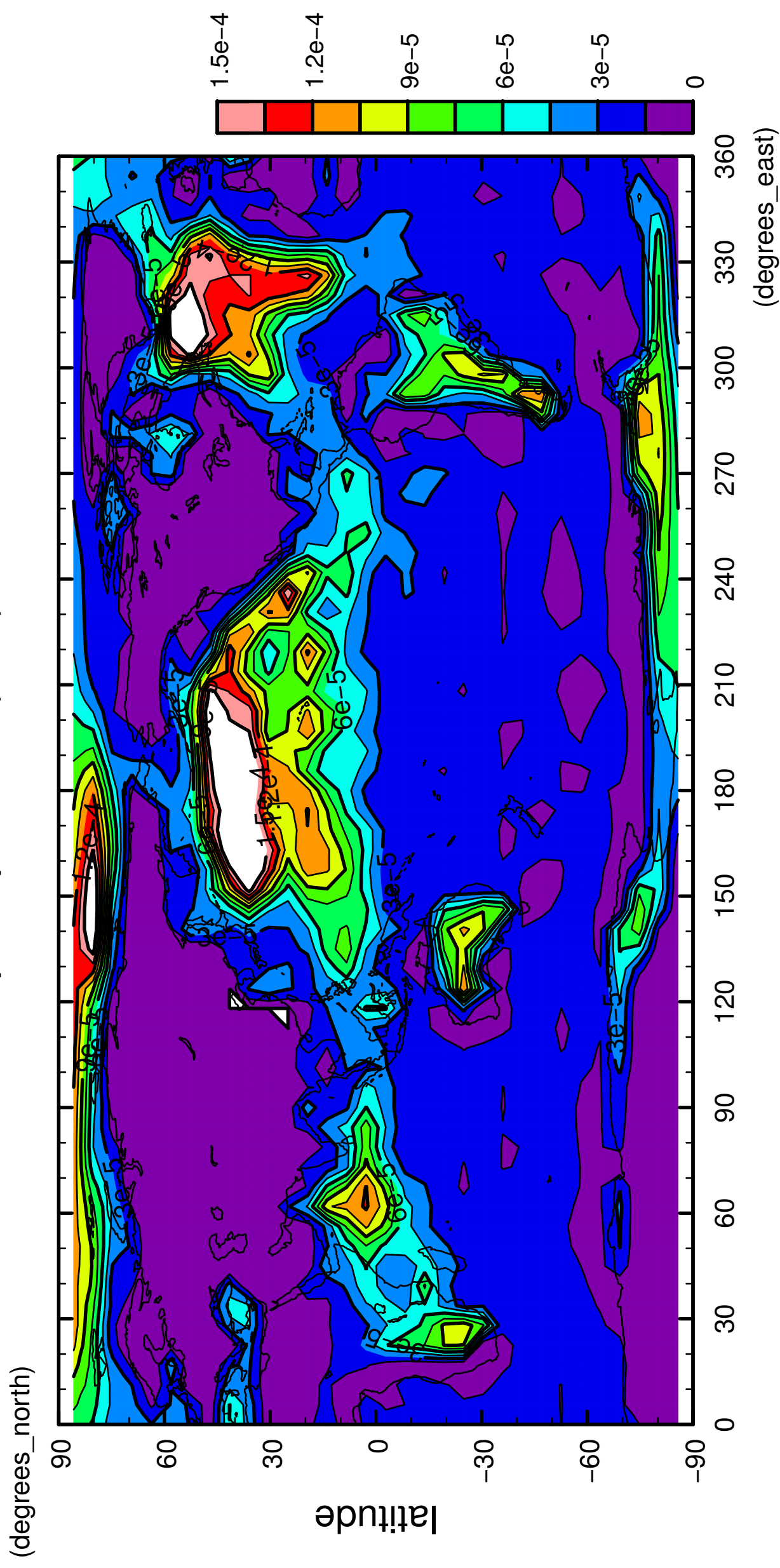
7/12

precipitation (rain)



8/12

precipitation (rain)

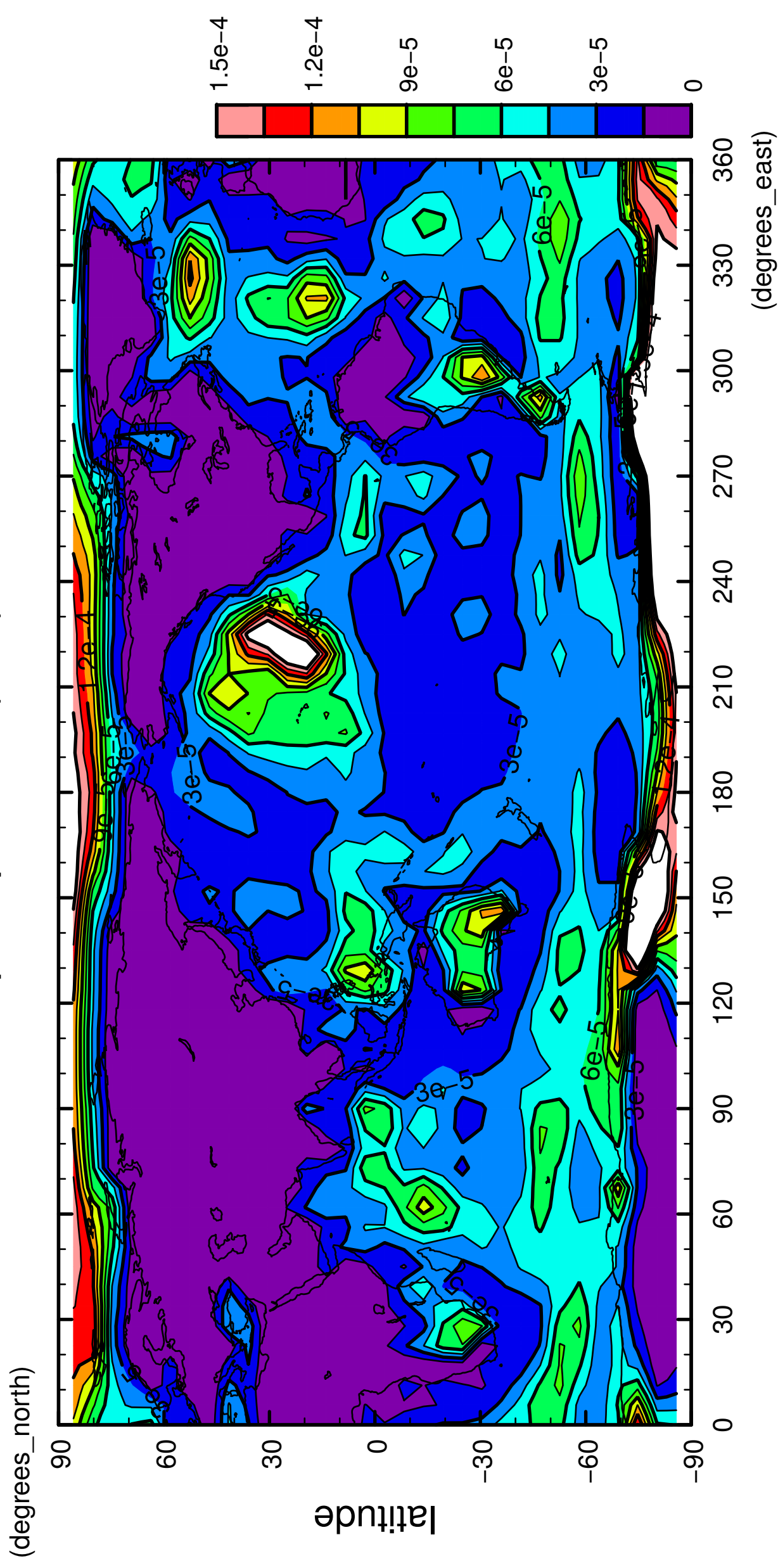


longitude

CONTOUR INTERVAL = 1.500E-05

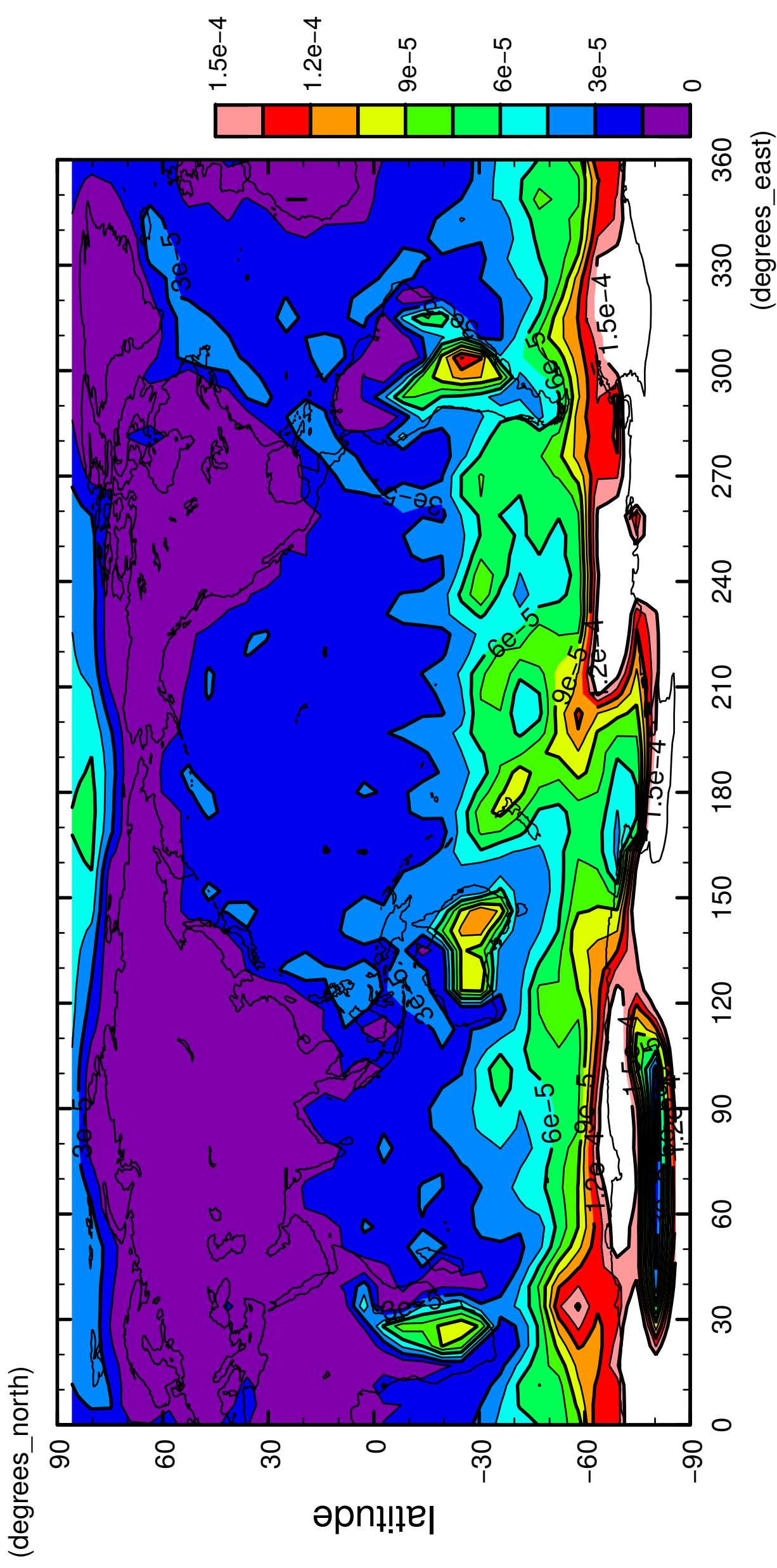
9/12

precipitation (rain)



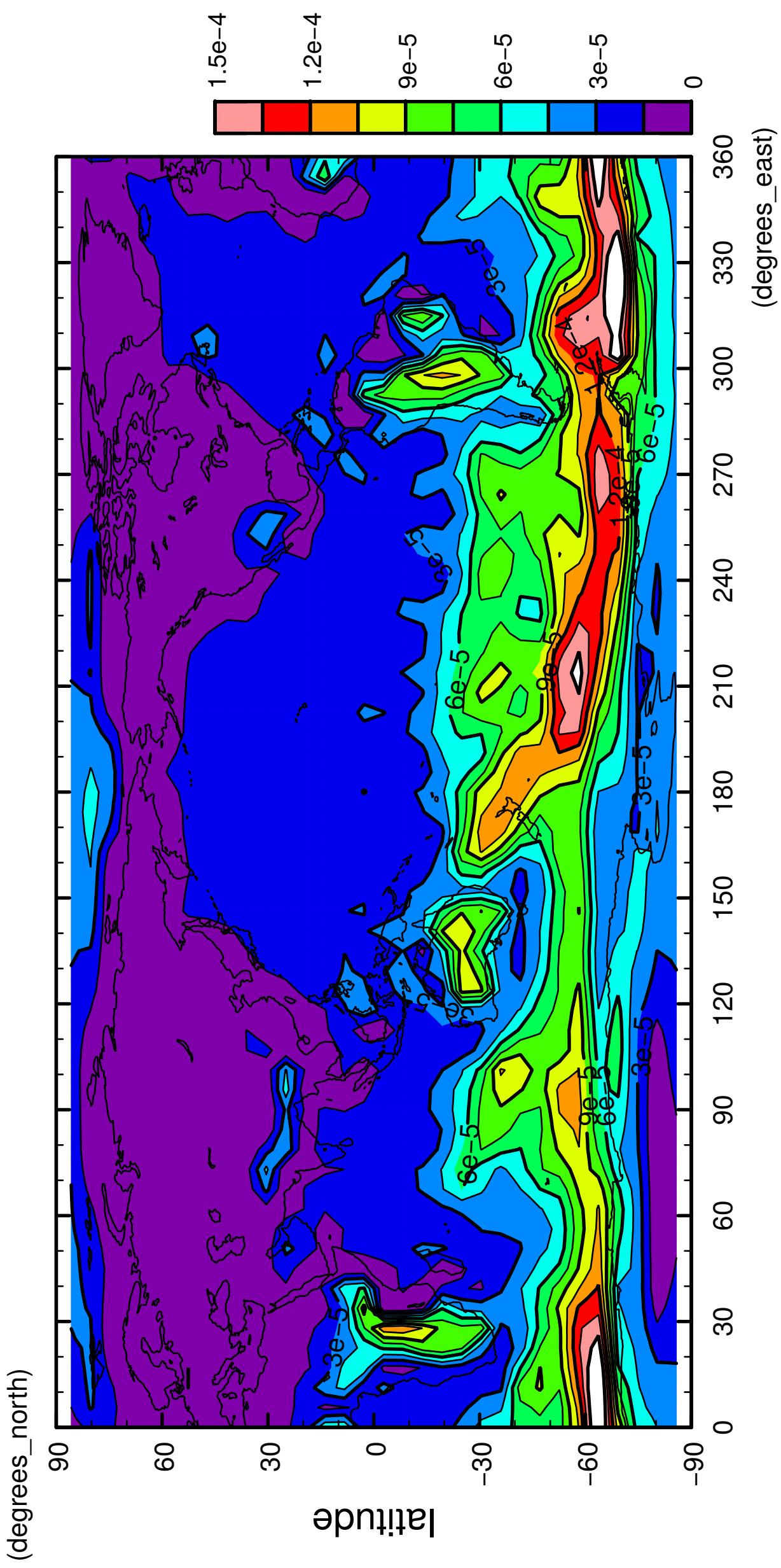
11/12

precipitation (rain)



12/12

precipitation (rain)



longitude
CONTOUR INTERVAL = 1.500E-05