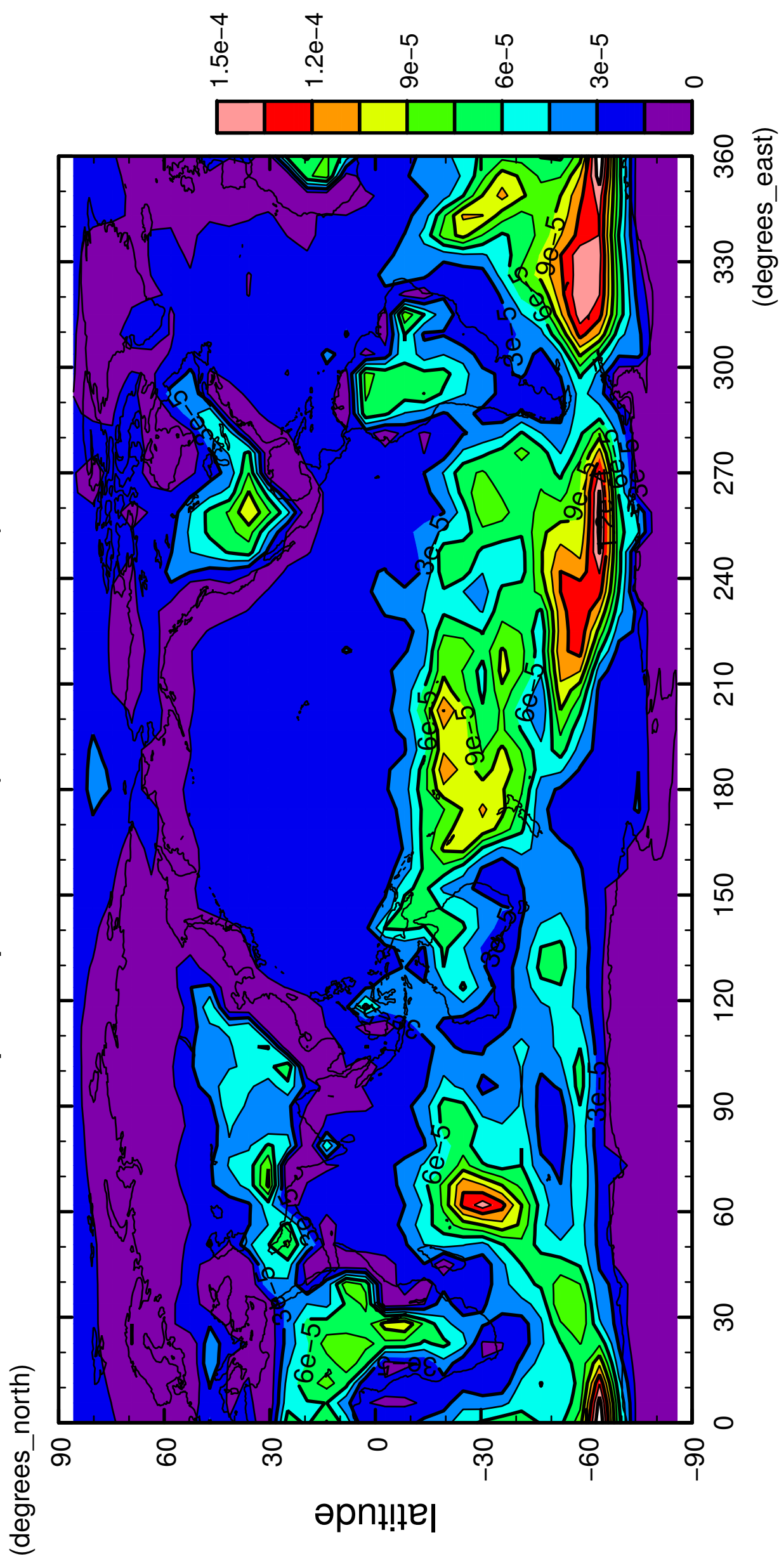


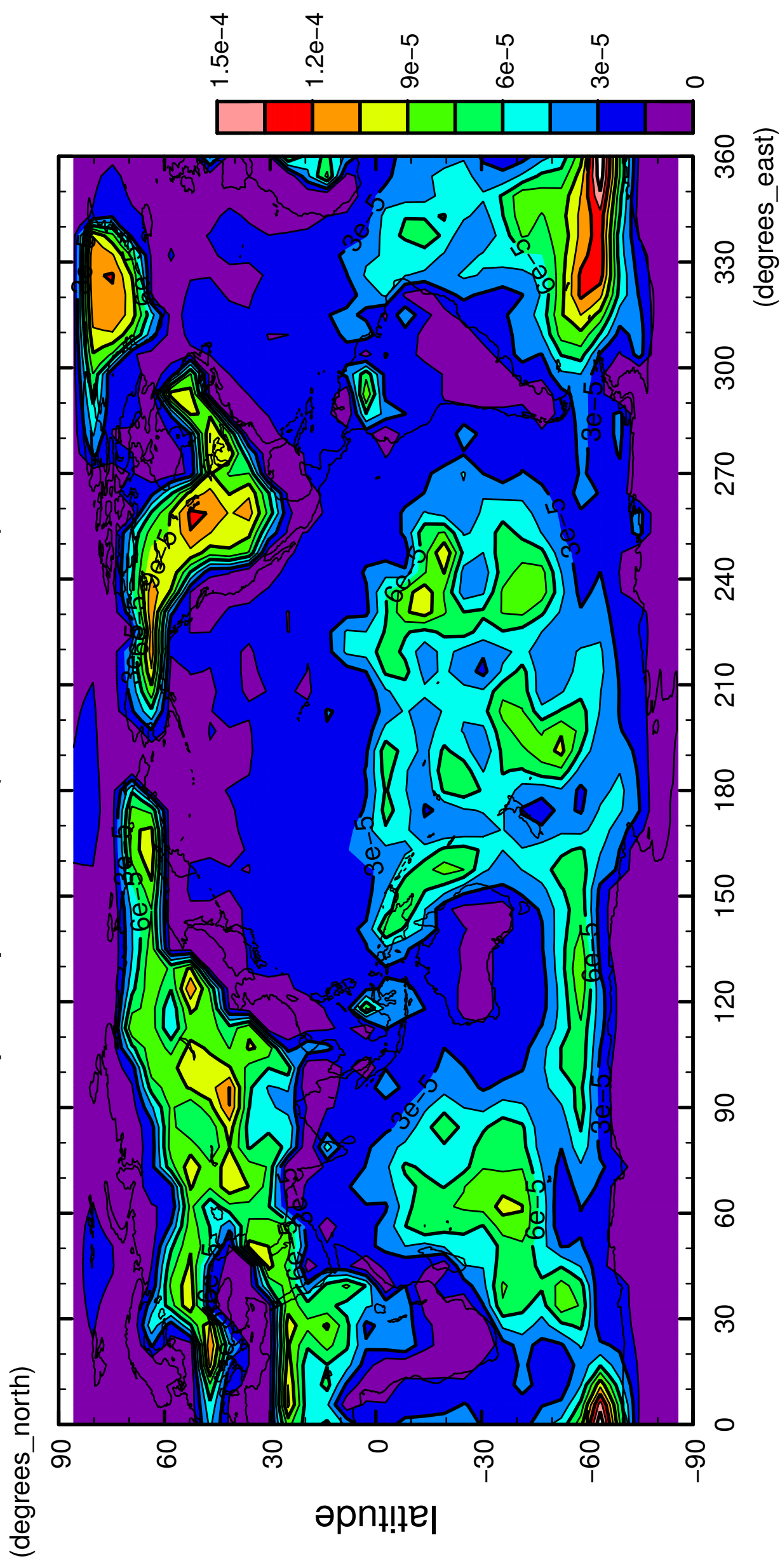
1/12

precipitation (rain + snow)



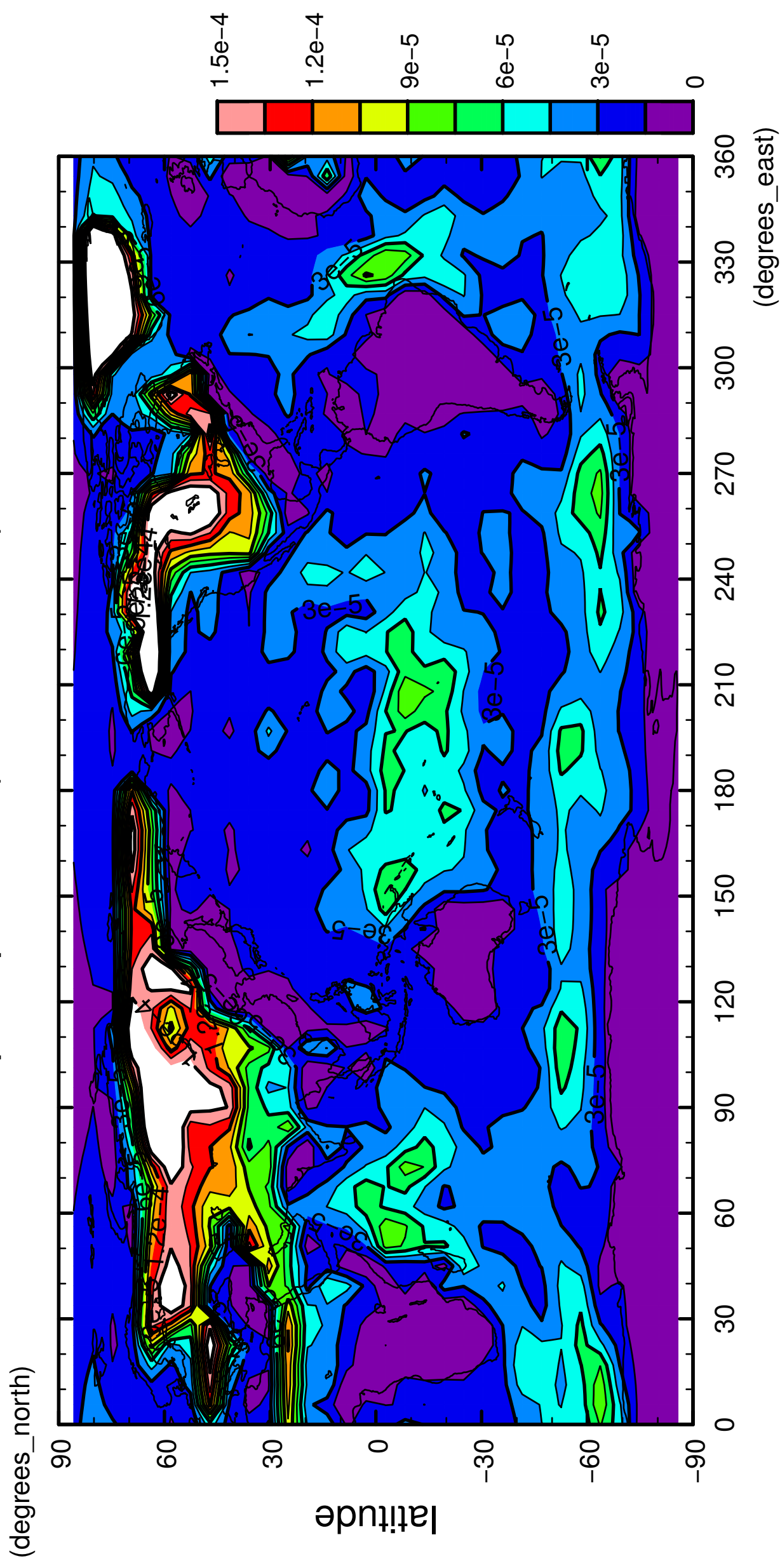
2/12

precipitation (rain + snow)



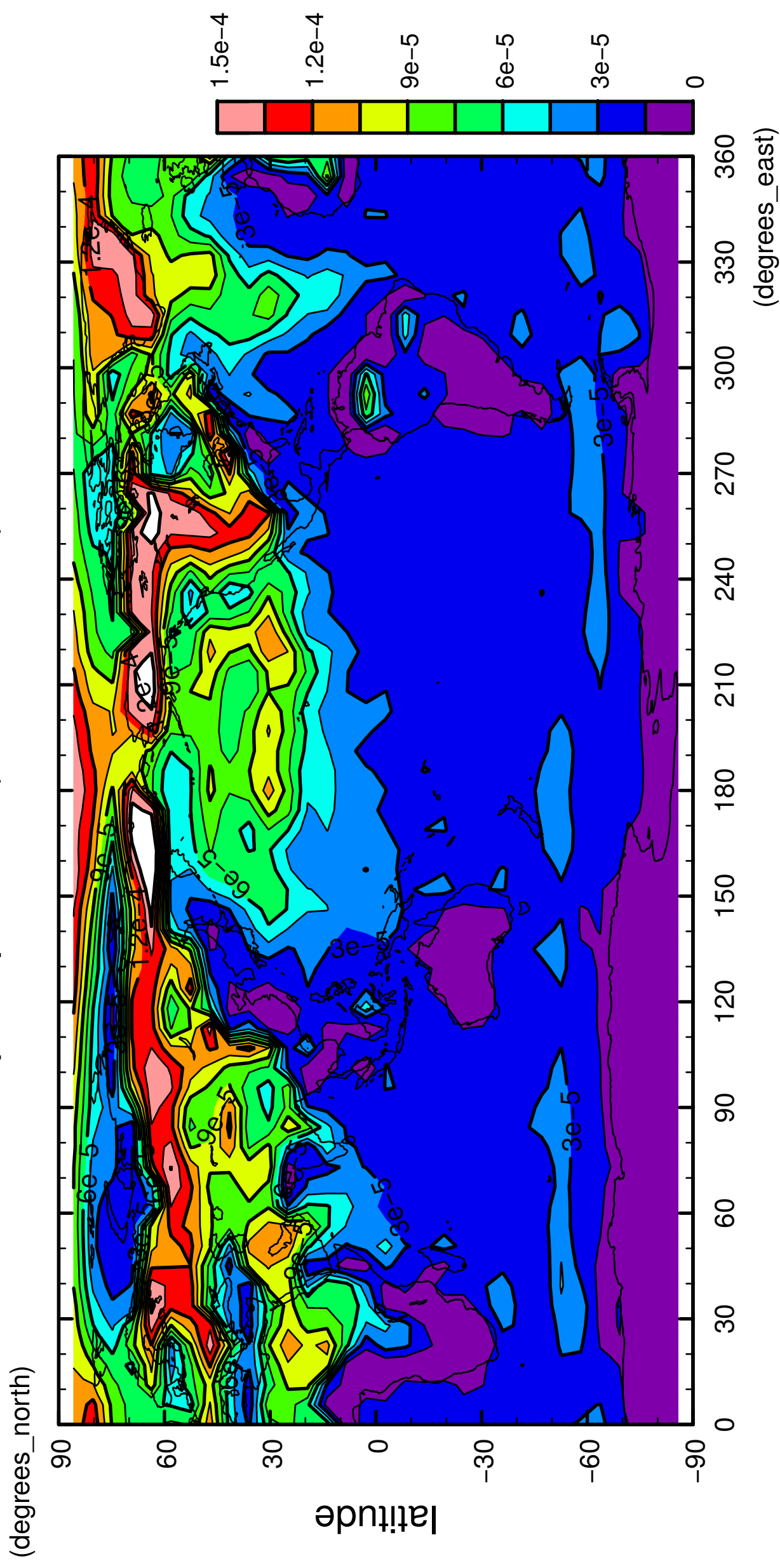
3/12

precipitation (rain + snow)



5/12

precipitation (rain + snow)

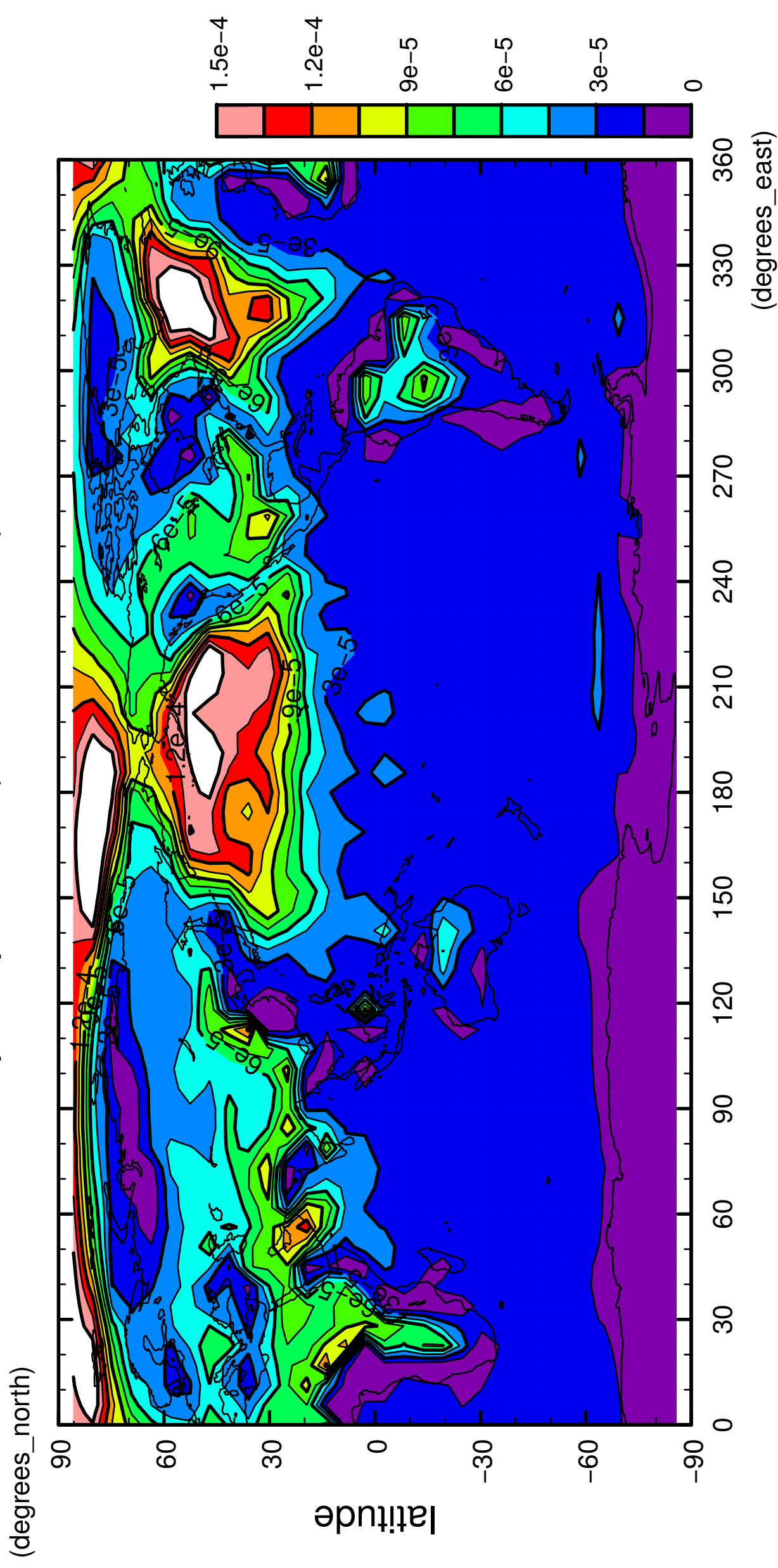


longitude

CONTOUR INTERVAL = 1.500E-05

6/12

precipitation (rain + snow)

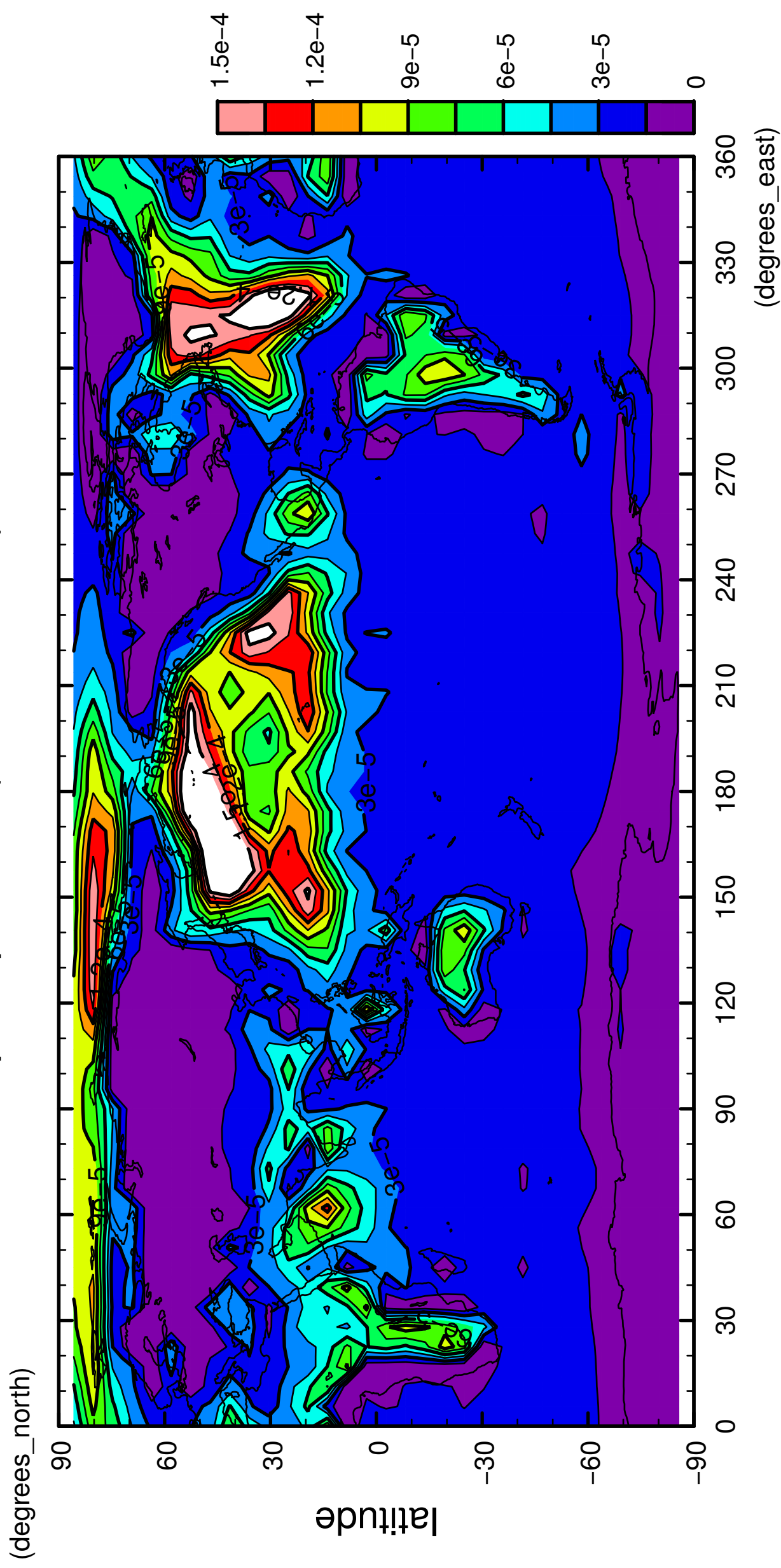


longitude

CONTOUR INTERVAL = 1.500E-05

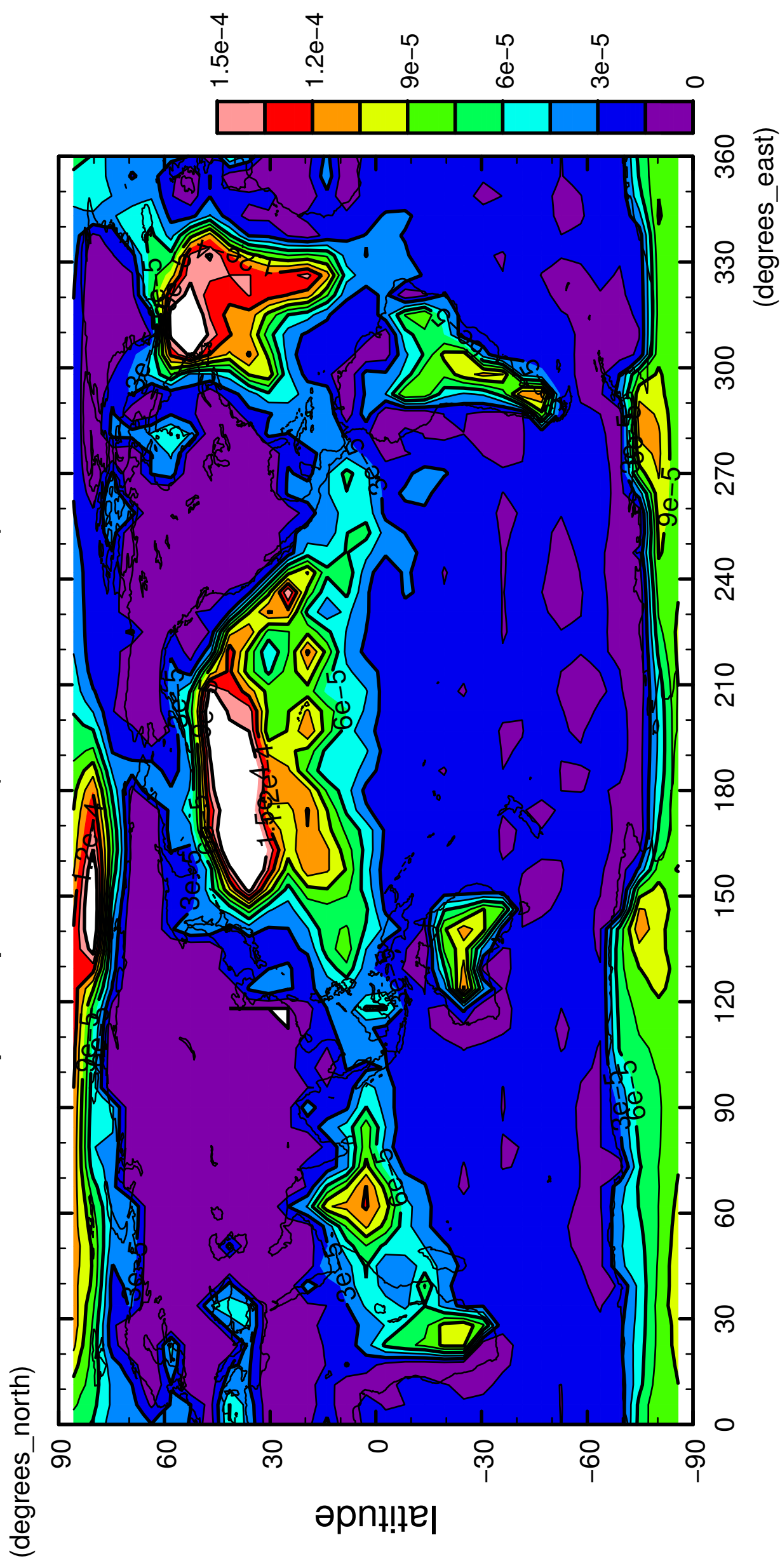
7/12

precipitation (rain + snow)



8/12

precipitation (rain + snow)

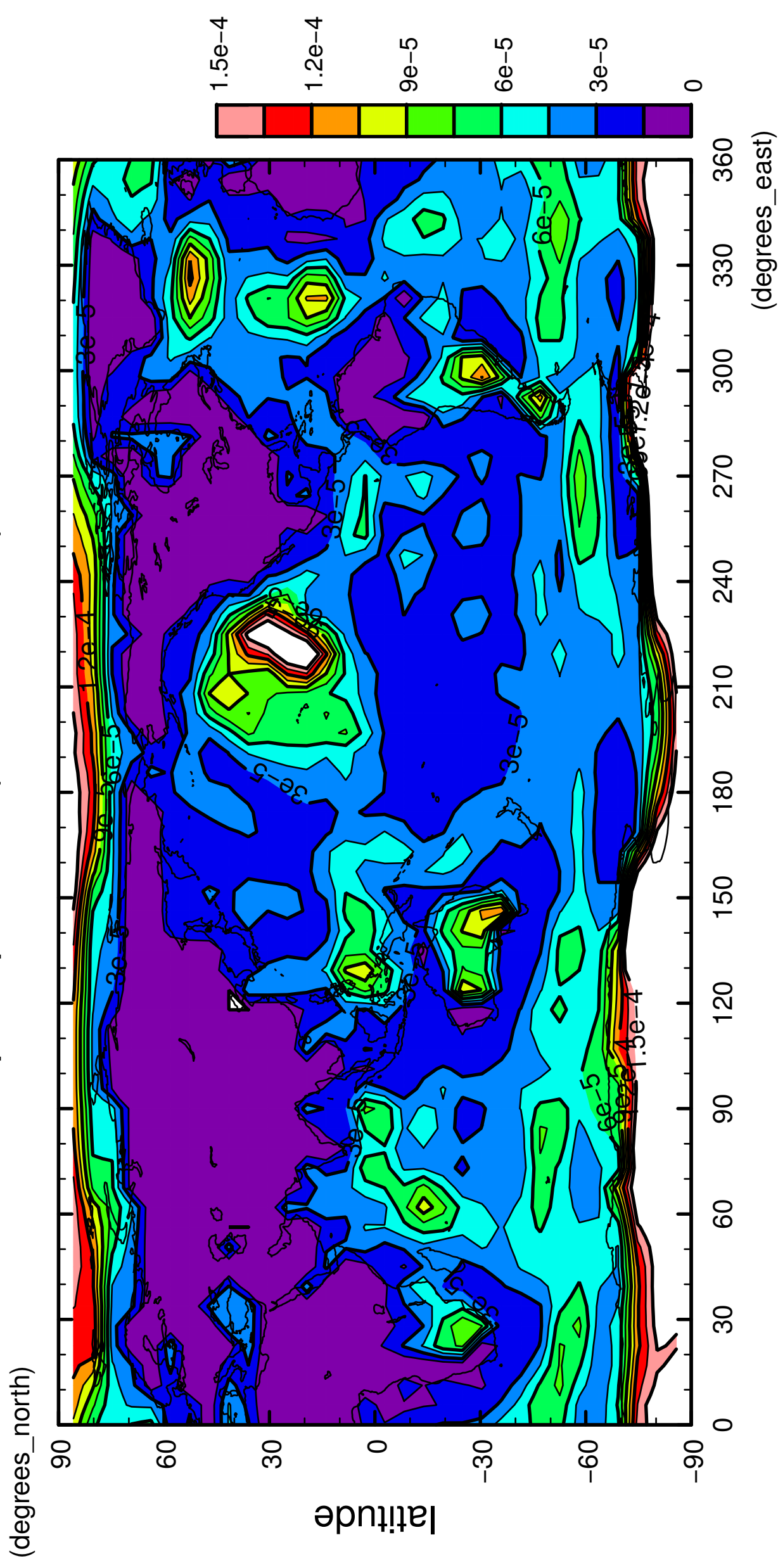


longitude

CONTOUR INTERVAL = 1.500E-05

9/12

precipitation (rain + snow)

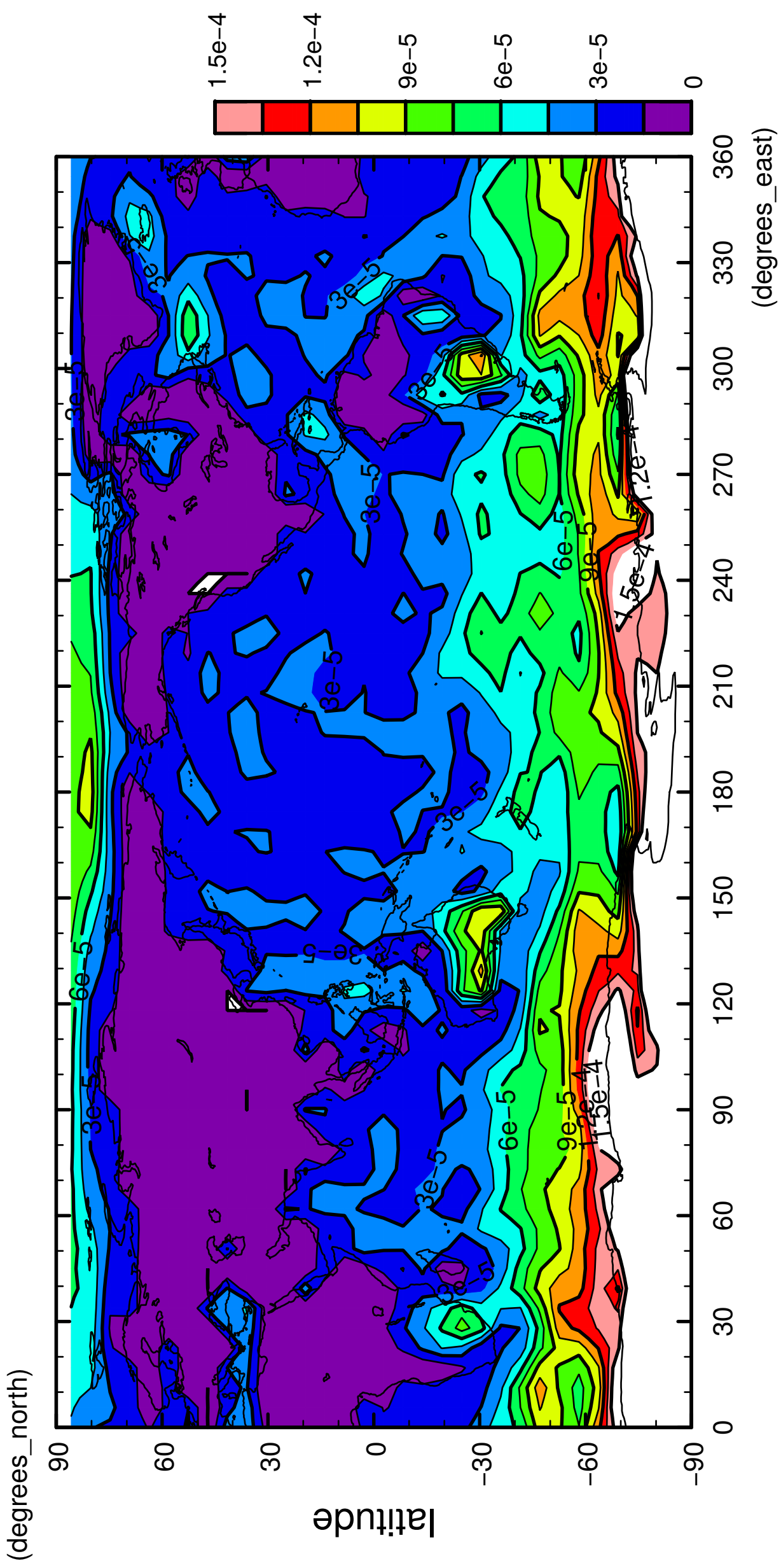


longitude

CONTOUR INTERVAL = 1.500E-05

10/12

precipitation (rain + snow)

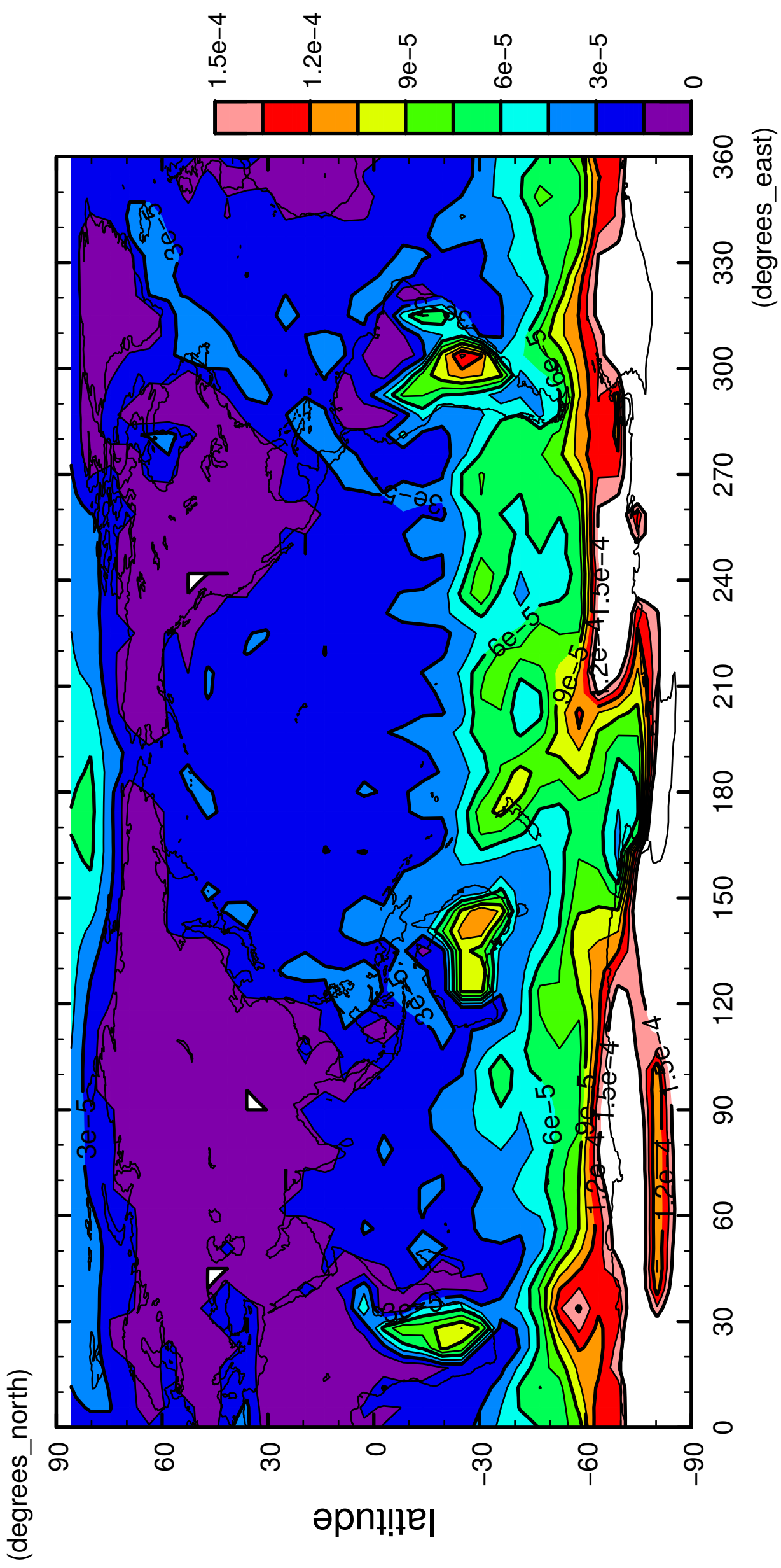


longitude

CONTOUR INTERVAL = 1.500E-05

11/12

precipitation (rain + snow)

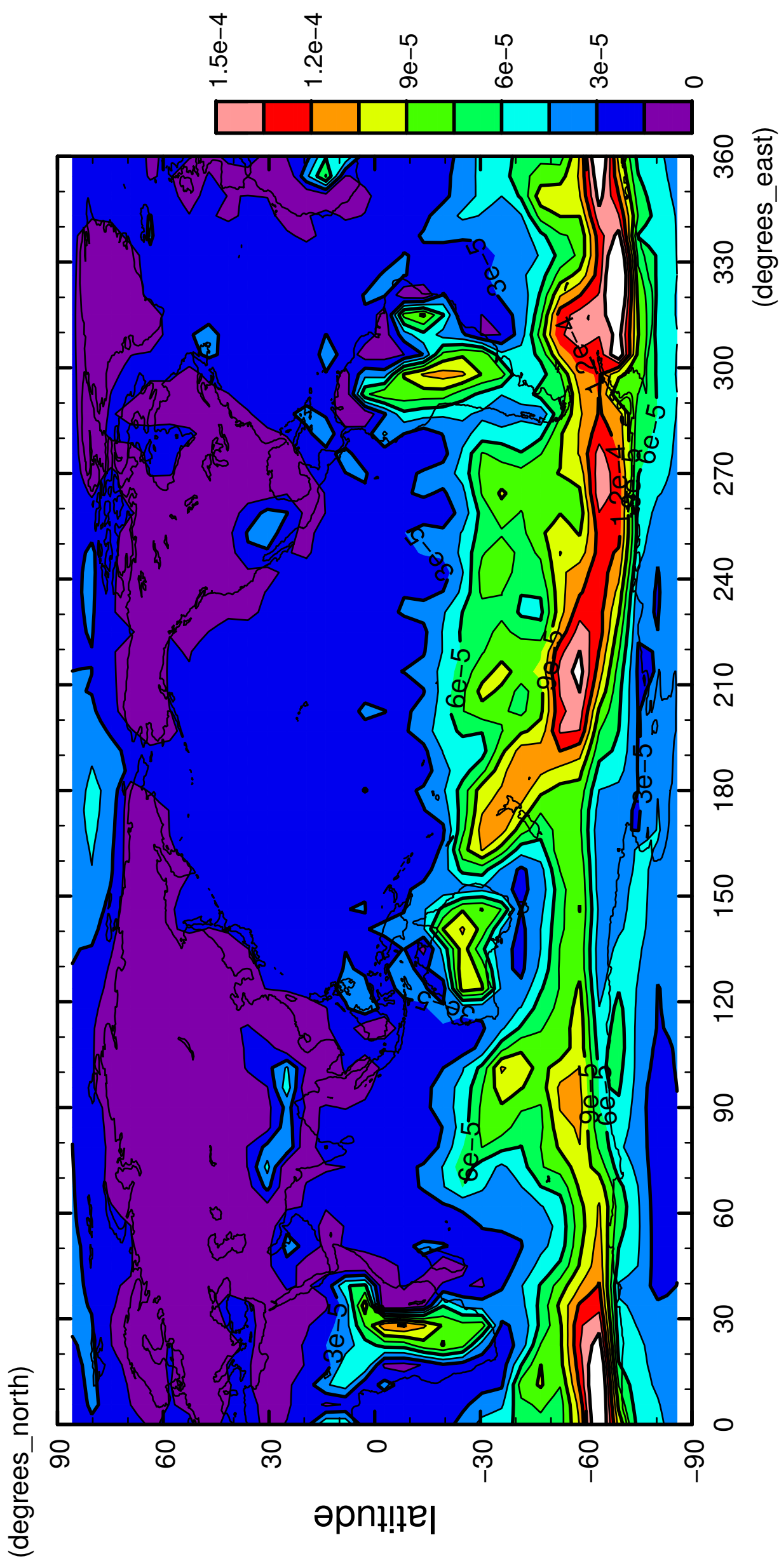


longitude

CONTOUR INTERVAL = 1.500E-05

12/12

precipitation (rain + snow)



longitude

CONTOUR INTERVAL = 1.500E-05