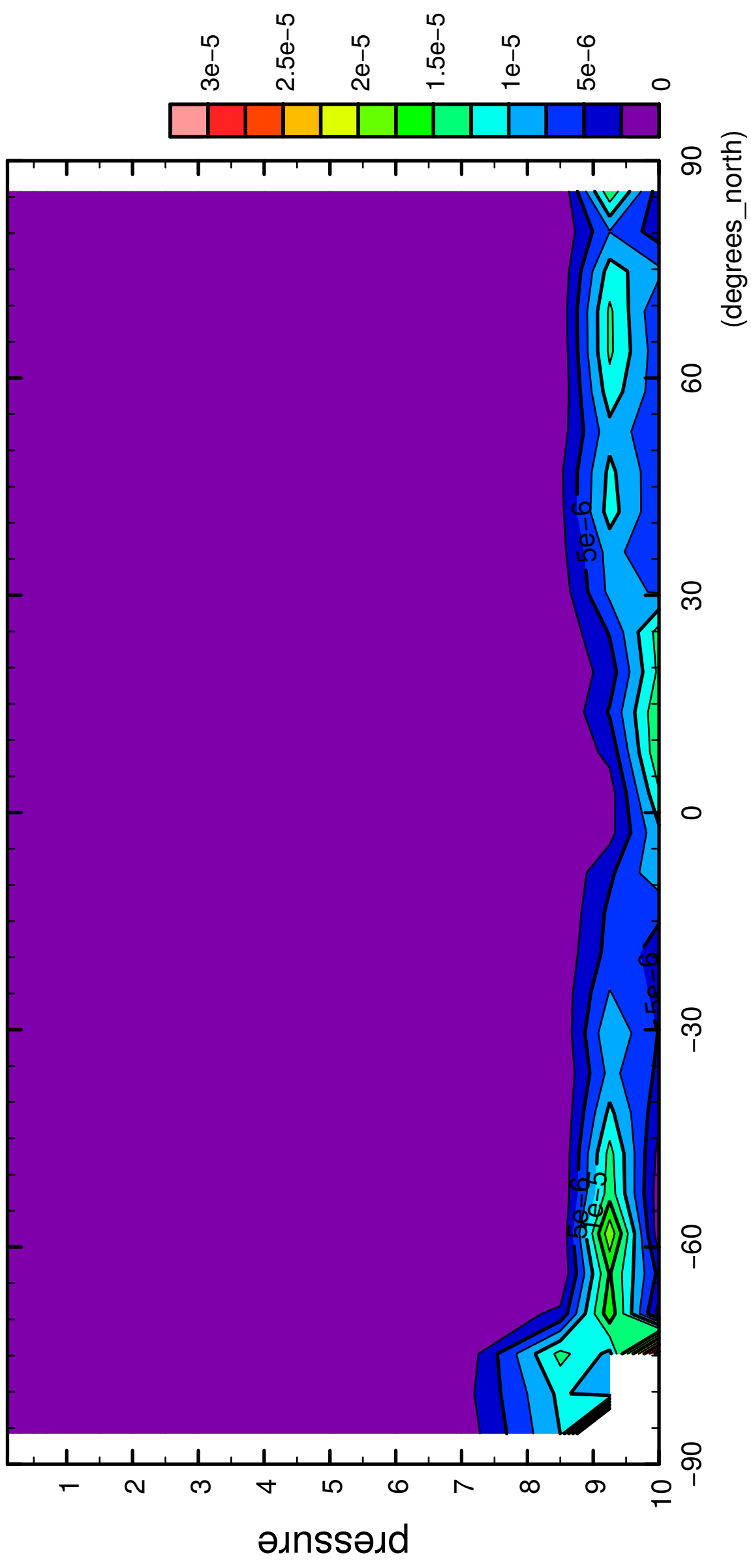


1/12

QH2OLiq

( $\times 10^4$  Pa)



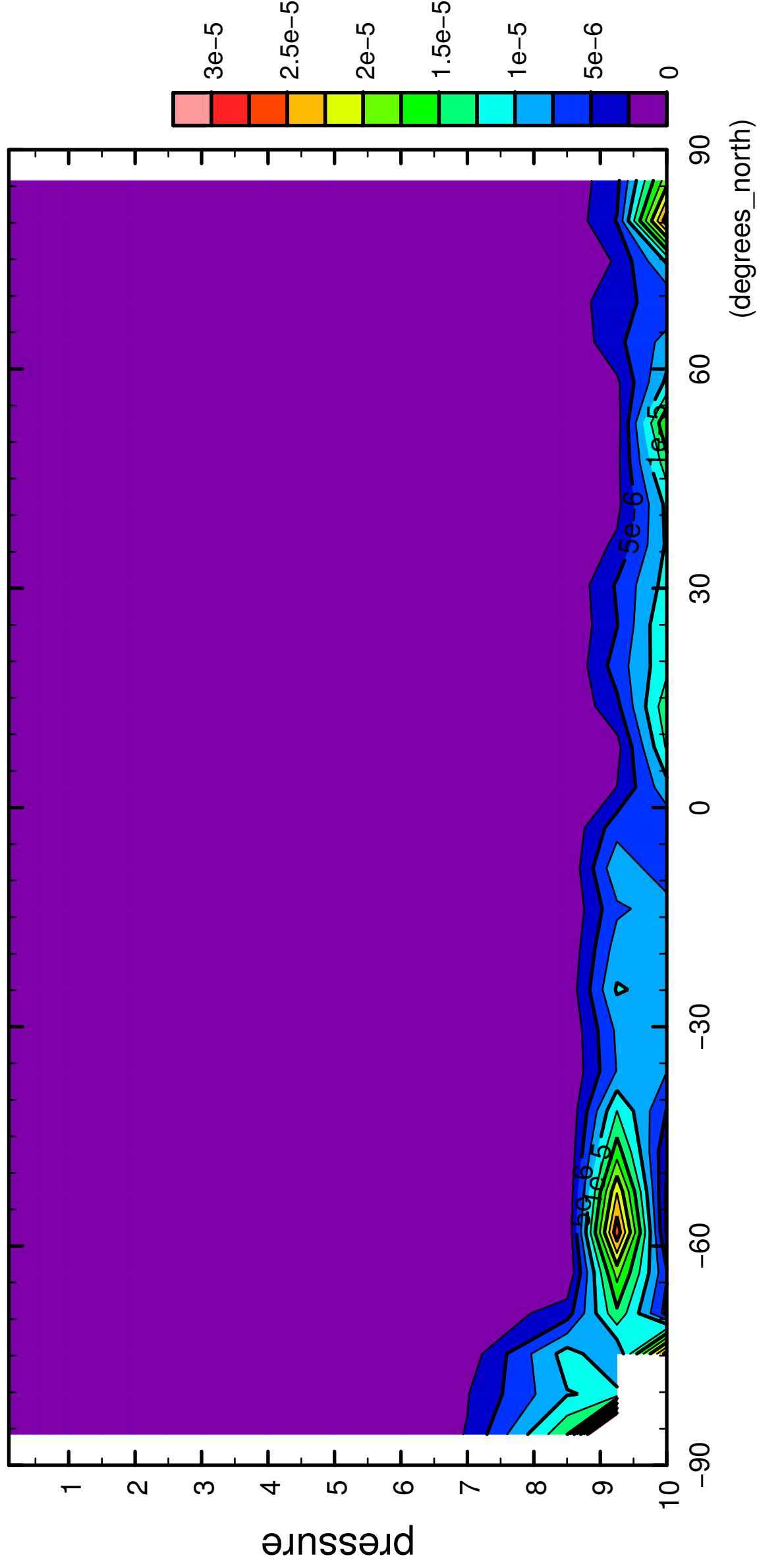
latitude

CONTOUR INTERVAL =  $2.500 \times 10^{-6}$

2/12

QH2OLiq

( $\times 10^4$  Pa)

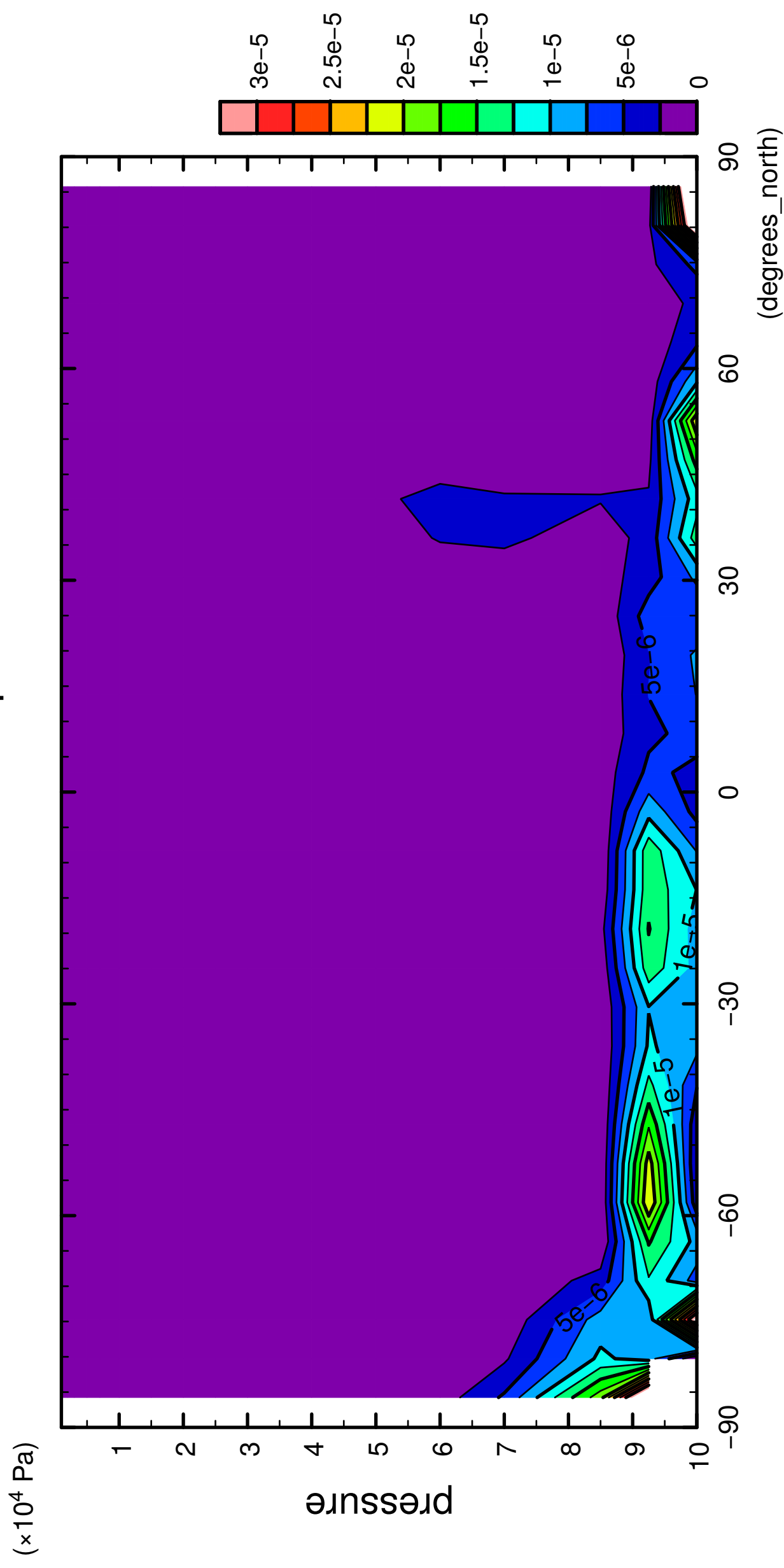


latitude

CONTOUR INTERVAL =  $2.500 \times 10^{-6}$

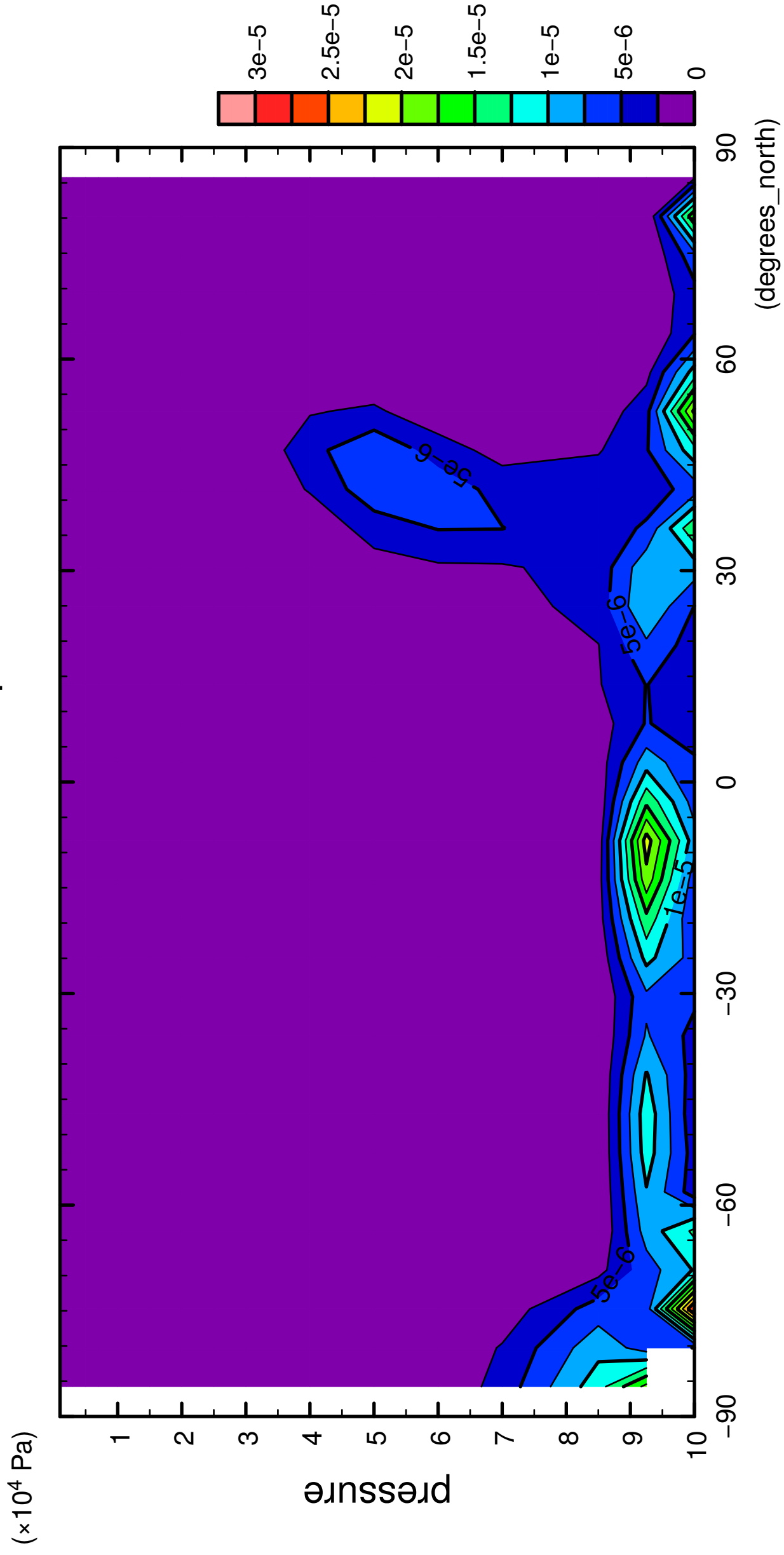
3/12

QH2OLiq



4/12

QH2OLiq



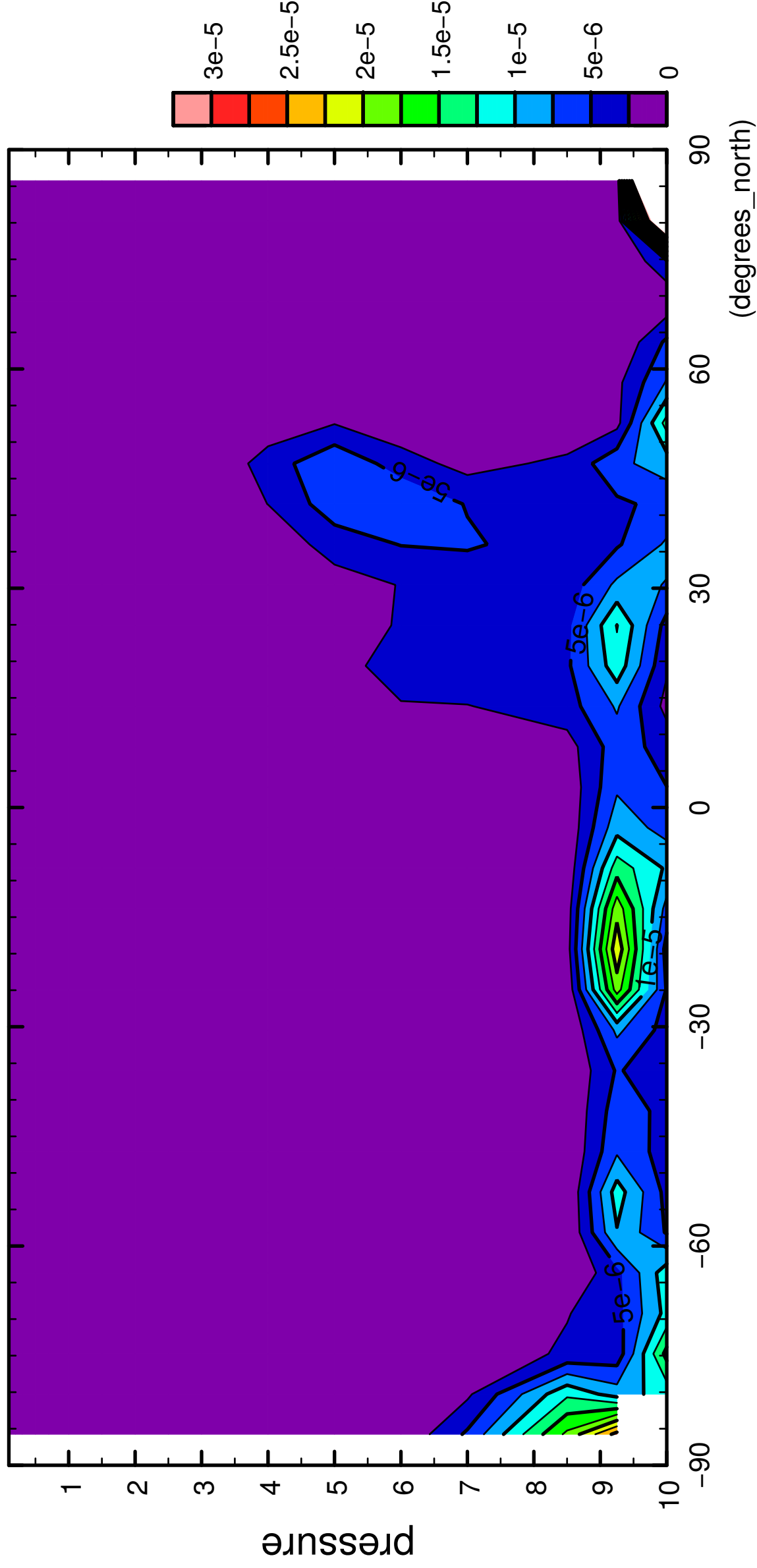
latitude

CONTOUR INTERVAL = 2.500E-06

5/12

QH2OLiq

( $\times 10^4$  Pa)



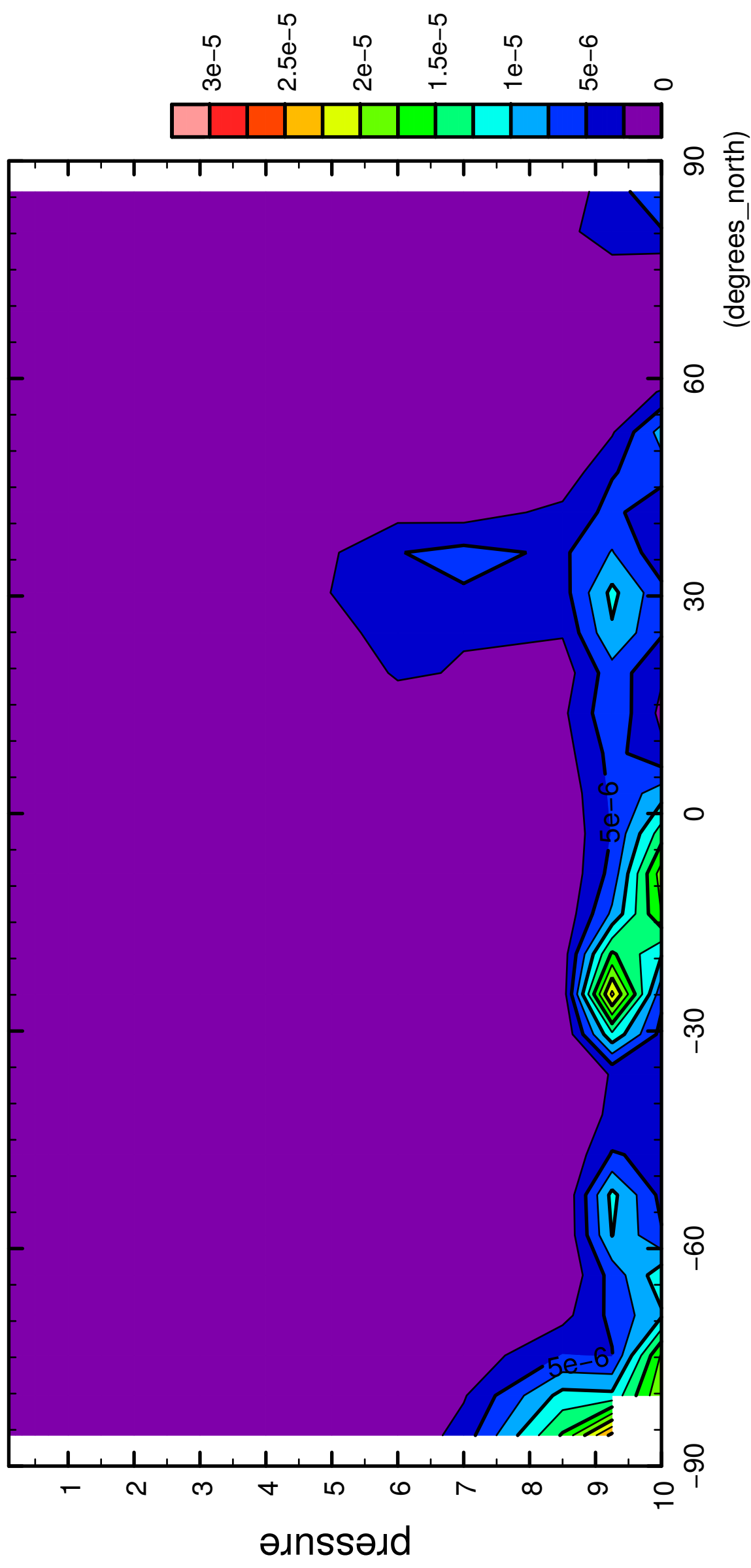
latitude

CONTOUR INTERVAL =  $2.500 \times 10^{-6}$

6/12

QH2OLiq

( $\times 10^4$  Pa)

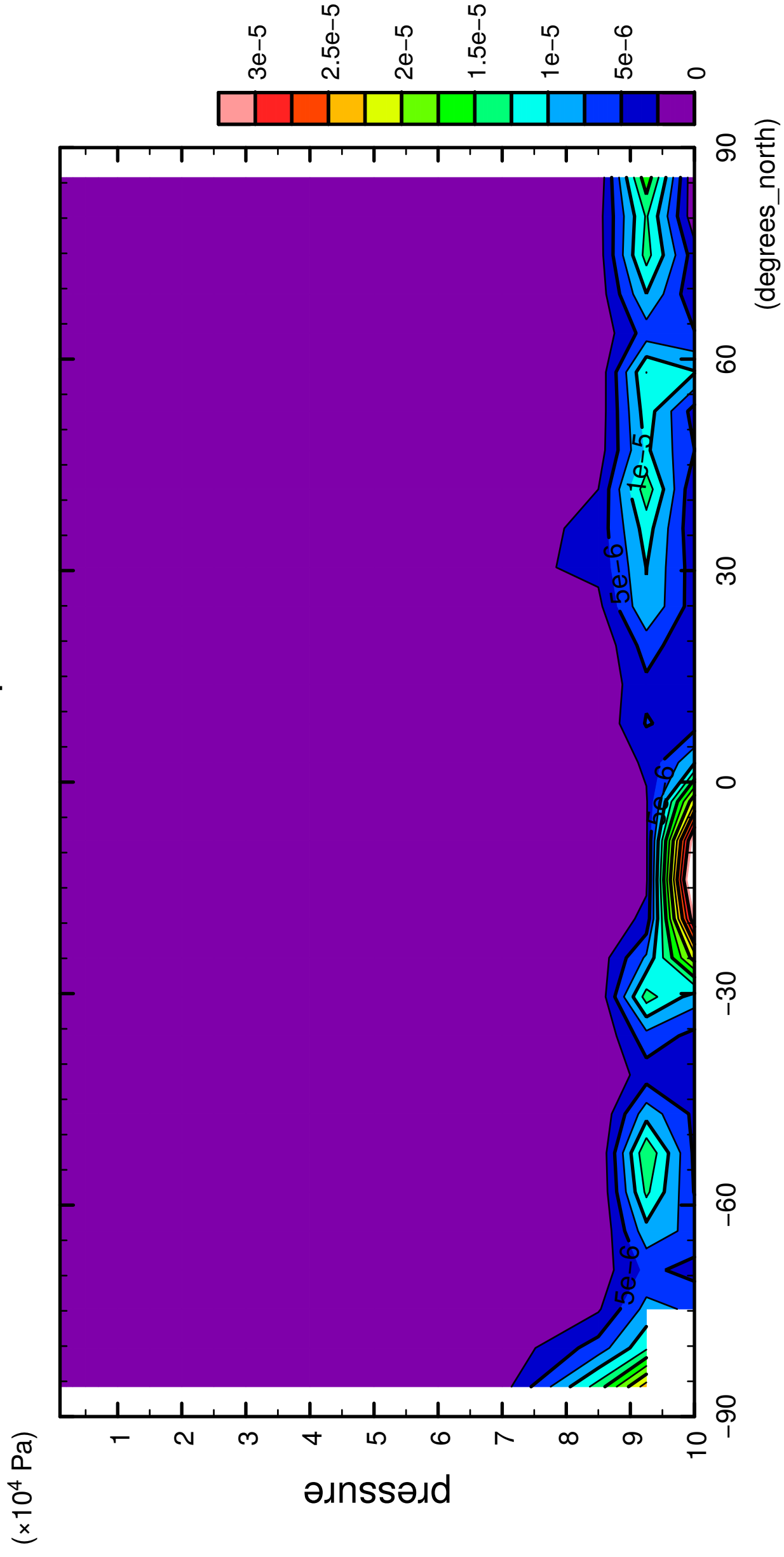


latitude

CONTOUR INTERVAL =  $2.500 \times 10^{-6}$

7/12

QH2OLiq

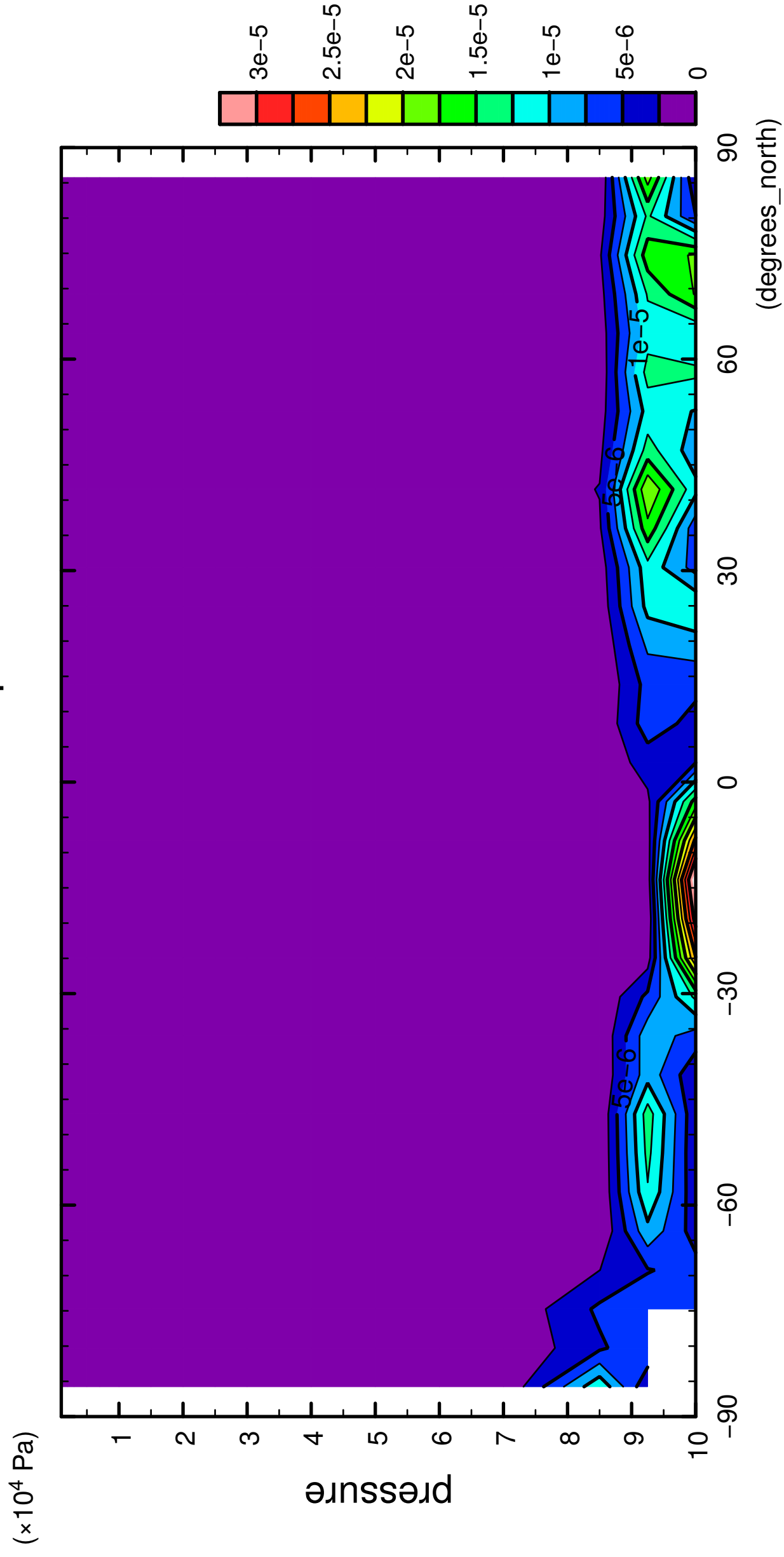


latitude

CONTOUR INTERVAL = 2.500E-06

8/12

QH2OLiq



latitude

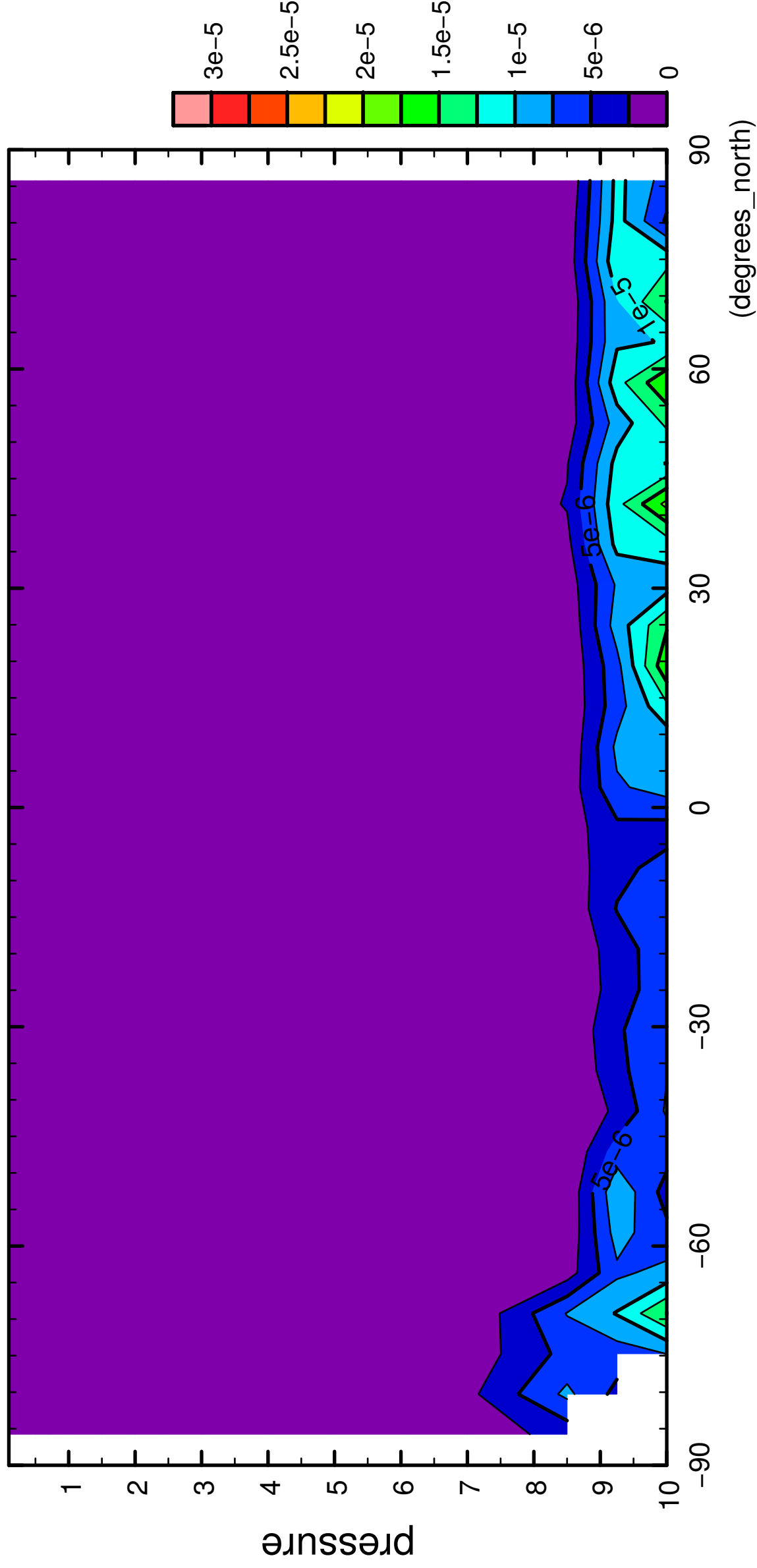
CONTOUR INTERVAL = 2.500E-06



9/12

QH2OLiq

( $\times 10^4$  Pa)



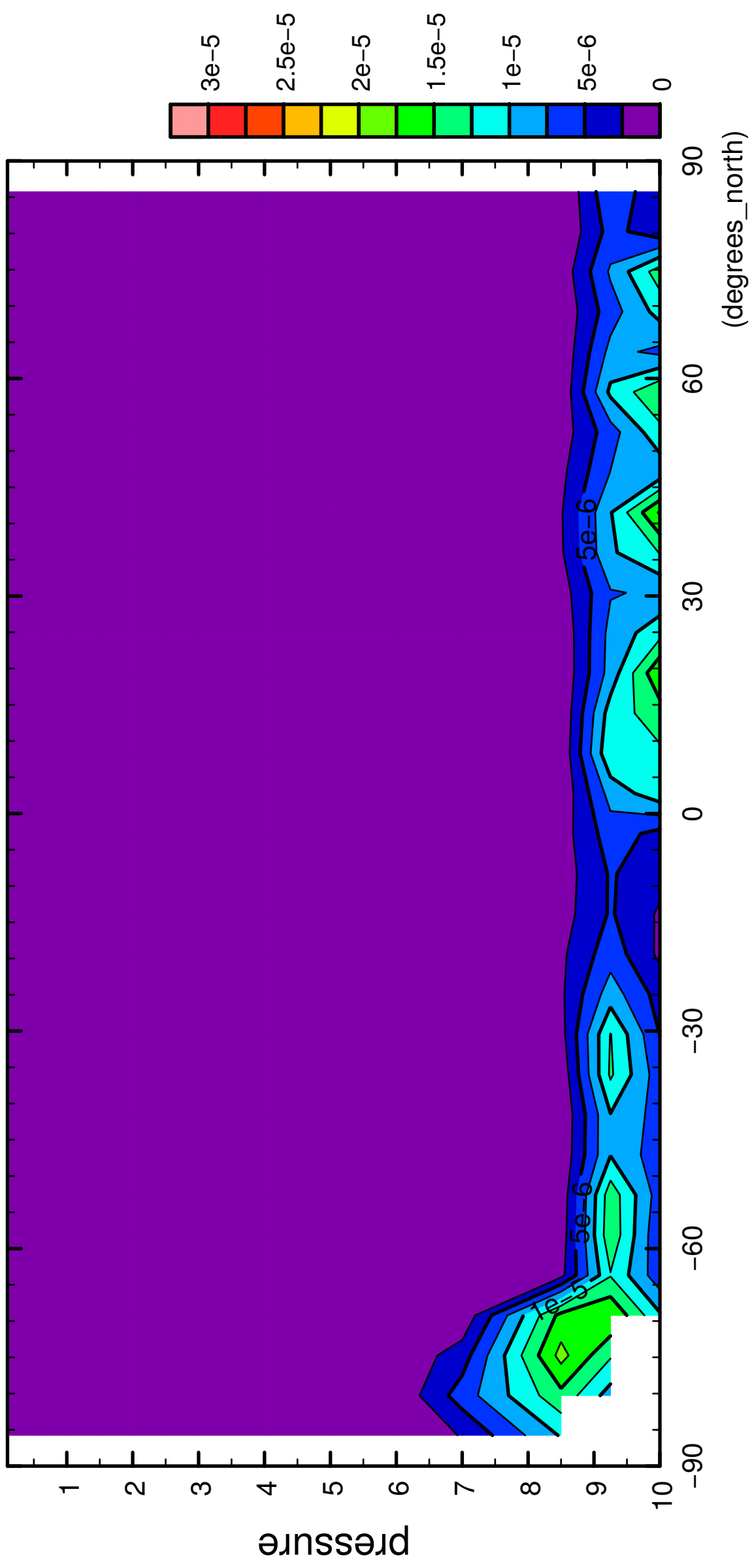
latitude

CONTOUR INTERVAL =  $2.500 \times 10^{-6}$

10/12

QH2OLiq

( $\times 10^4$  Pa)



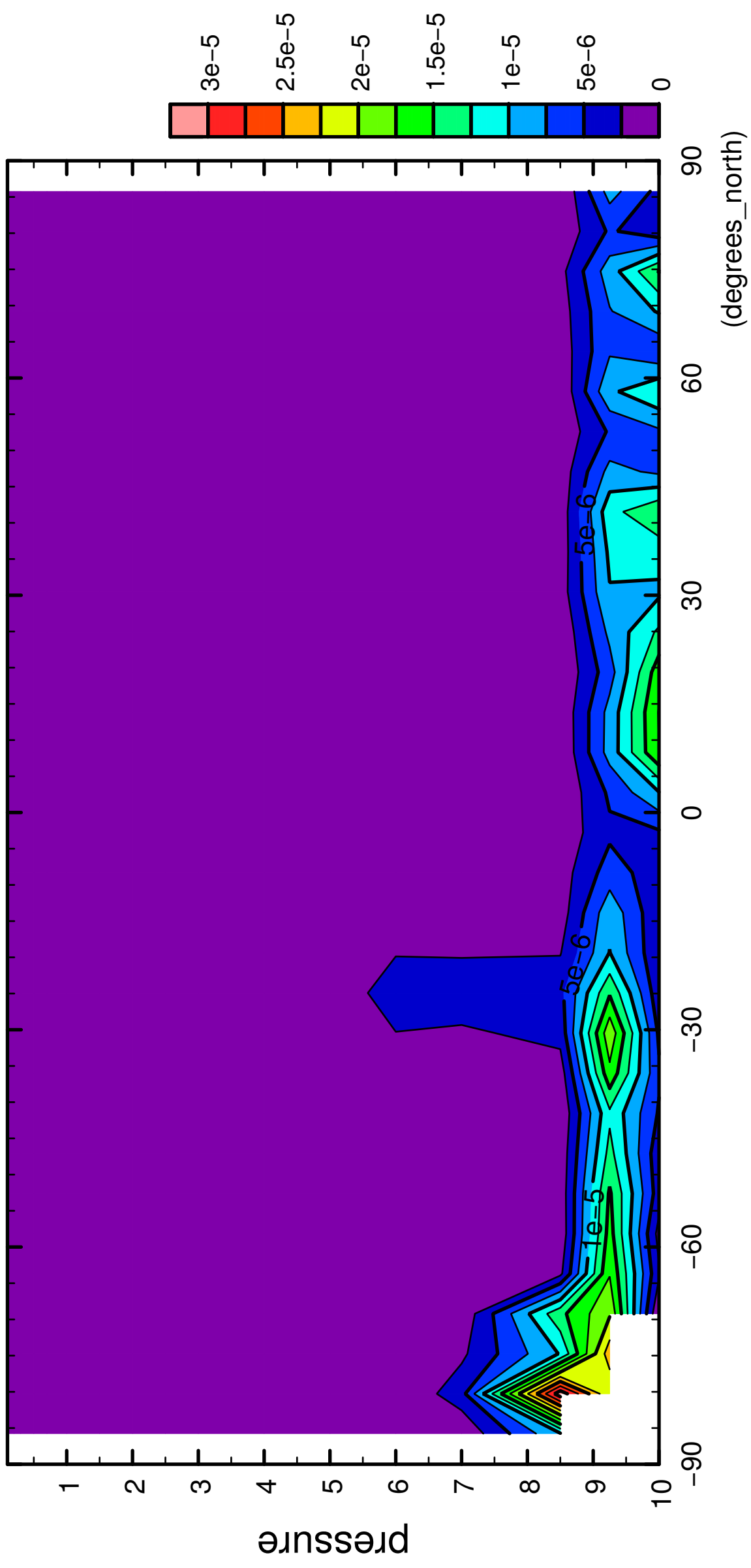
latitude

CONTOUR INTERVAL =  $2.500 \times 10^{-6}$

11/12

QH2OLiq

( $\times 10^4$  Pa)

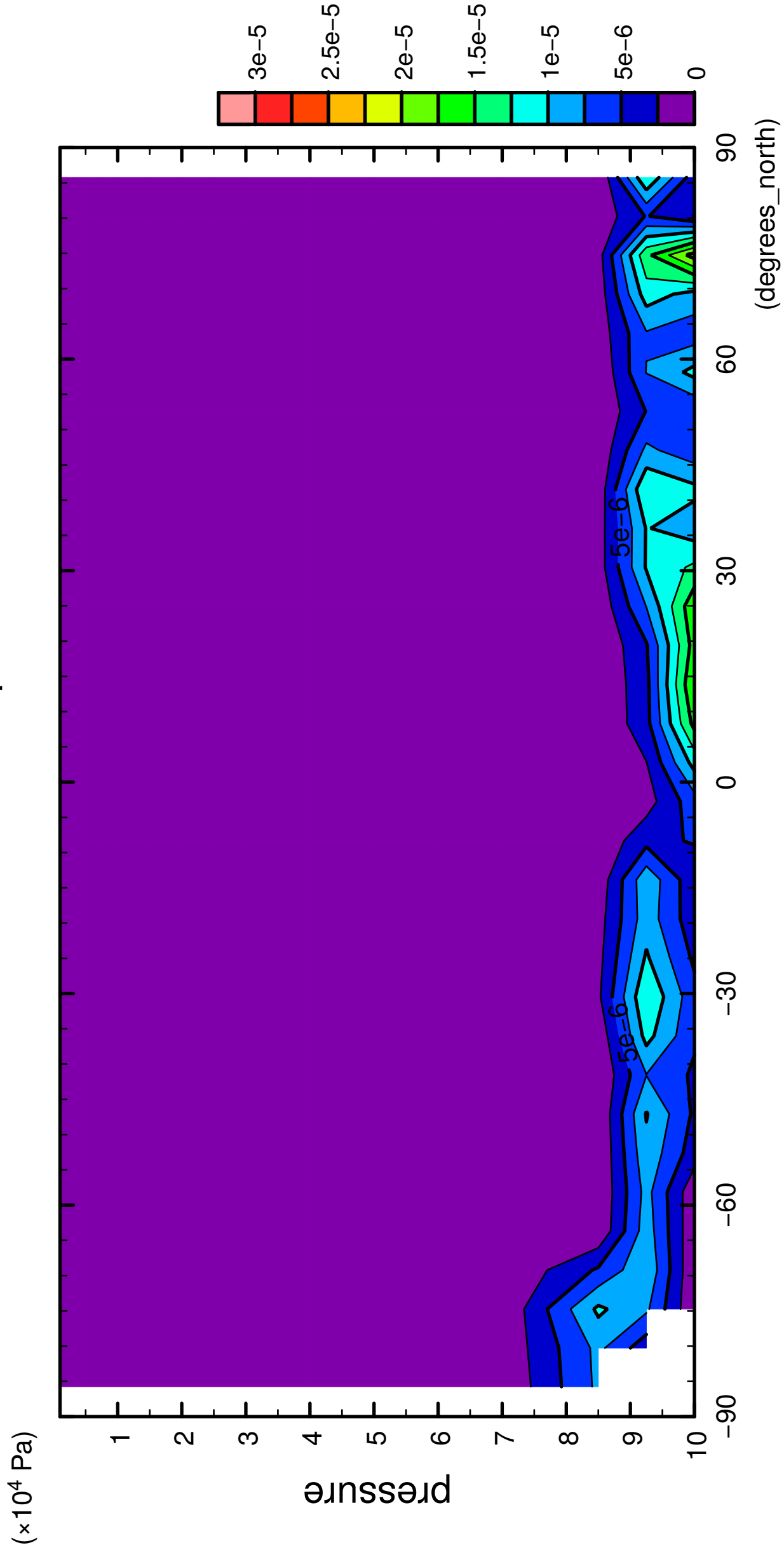


latitude

CONTOUR INTERVAL =  $2.500 \times 10^{-6}$

12/12

QH2OLiq



latitude

CONTOUR INTERVAL = 2.500E-06