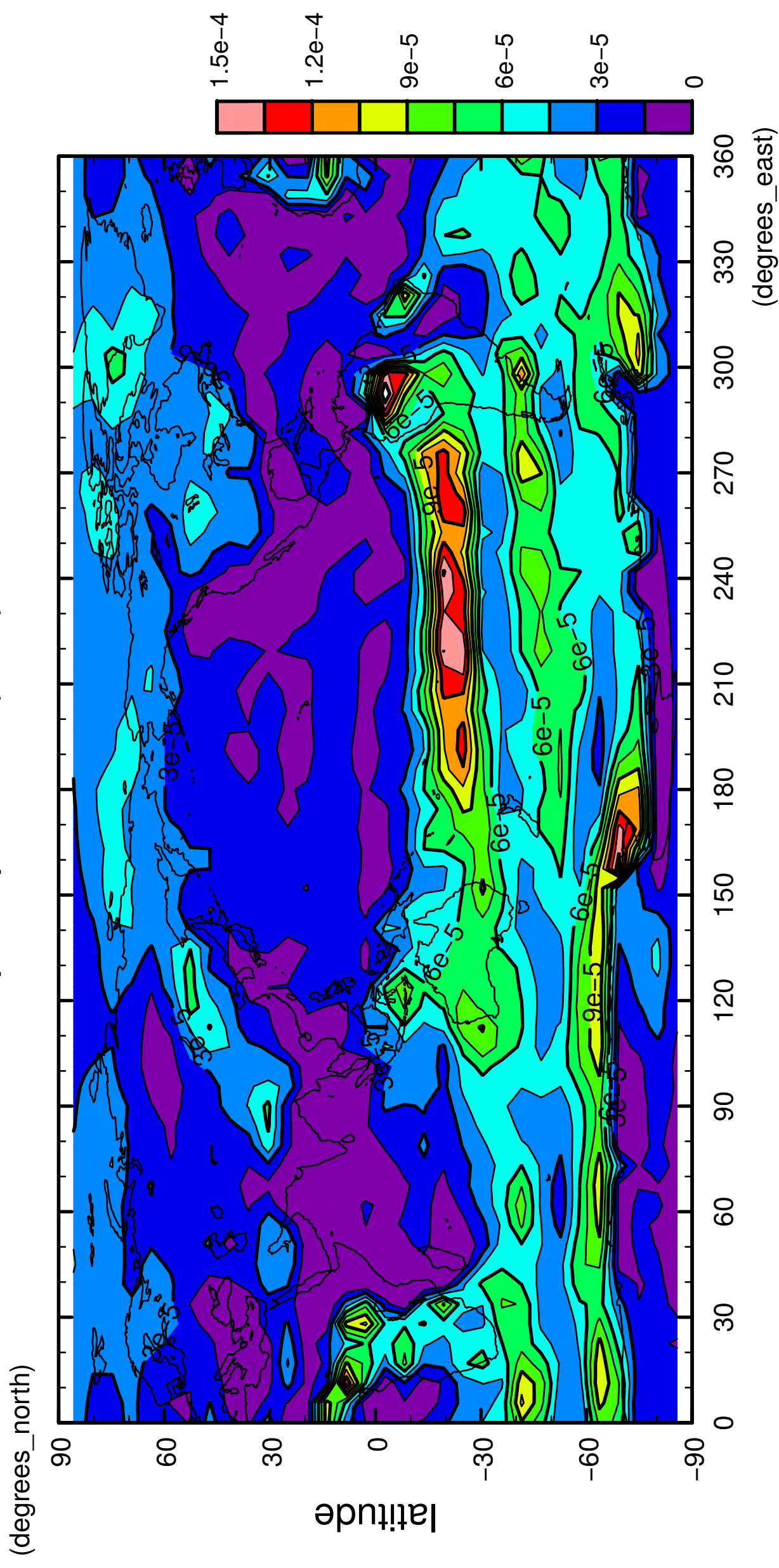


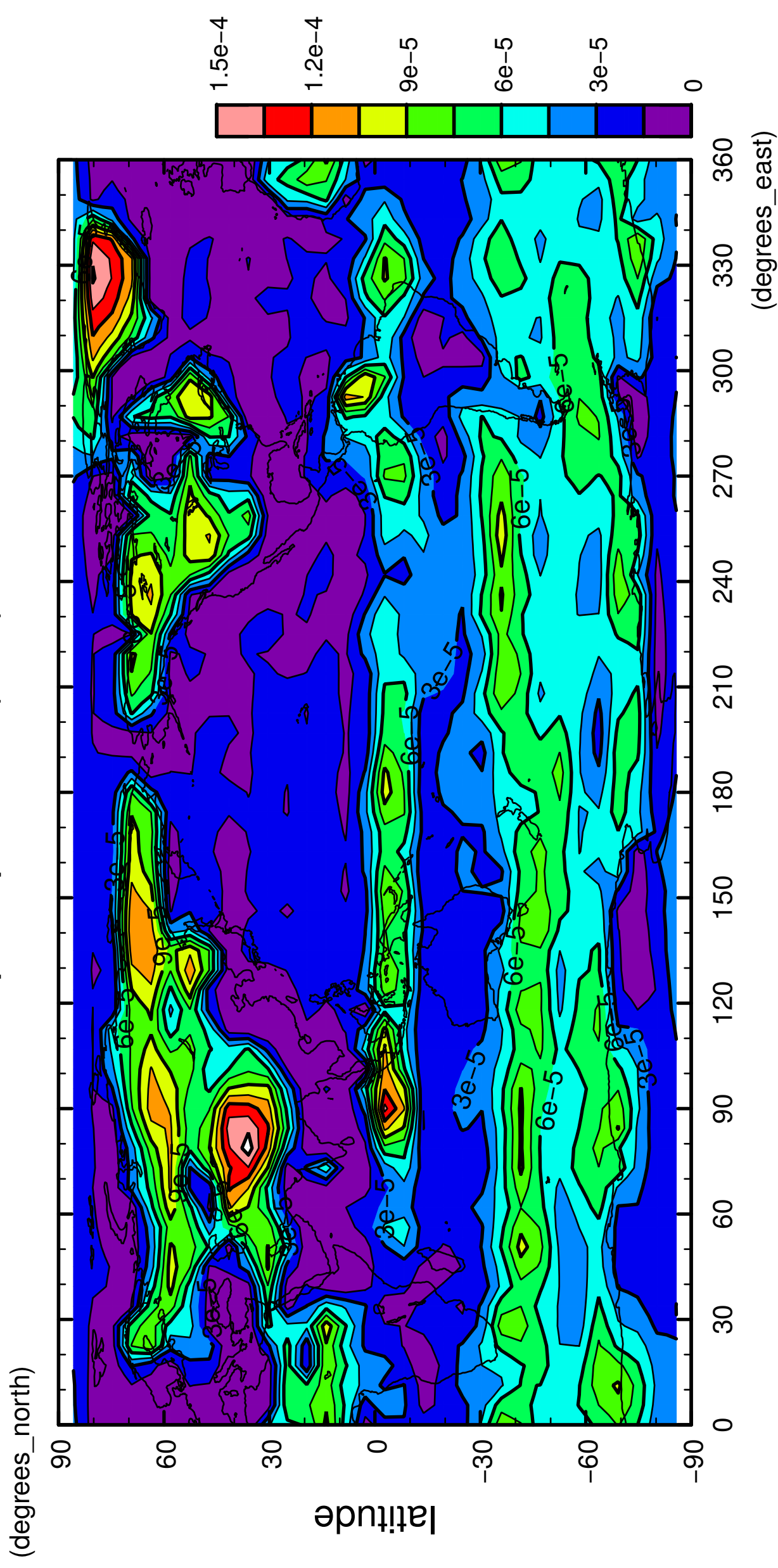
1/12

# precipitation (rain)



2/12

# precipitation (rain)

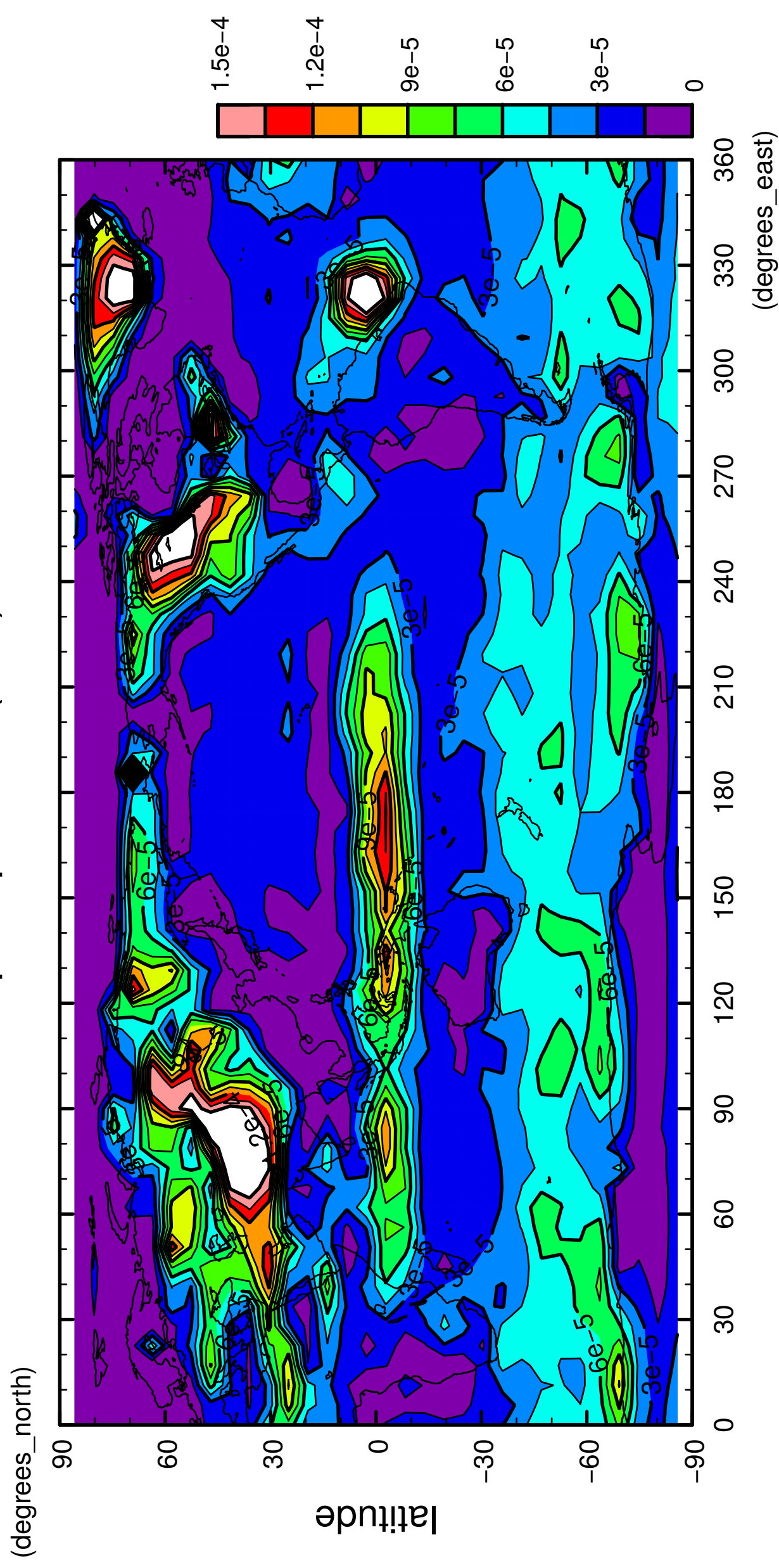


longitude

CONTOUR INTERVAL = 1.500E-05

3/12

# precipitation (rain)



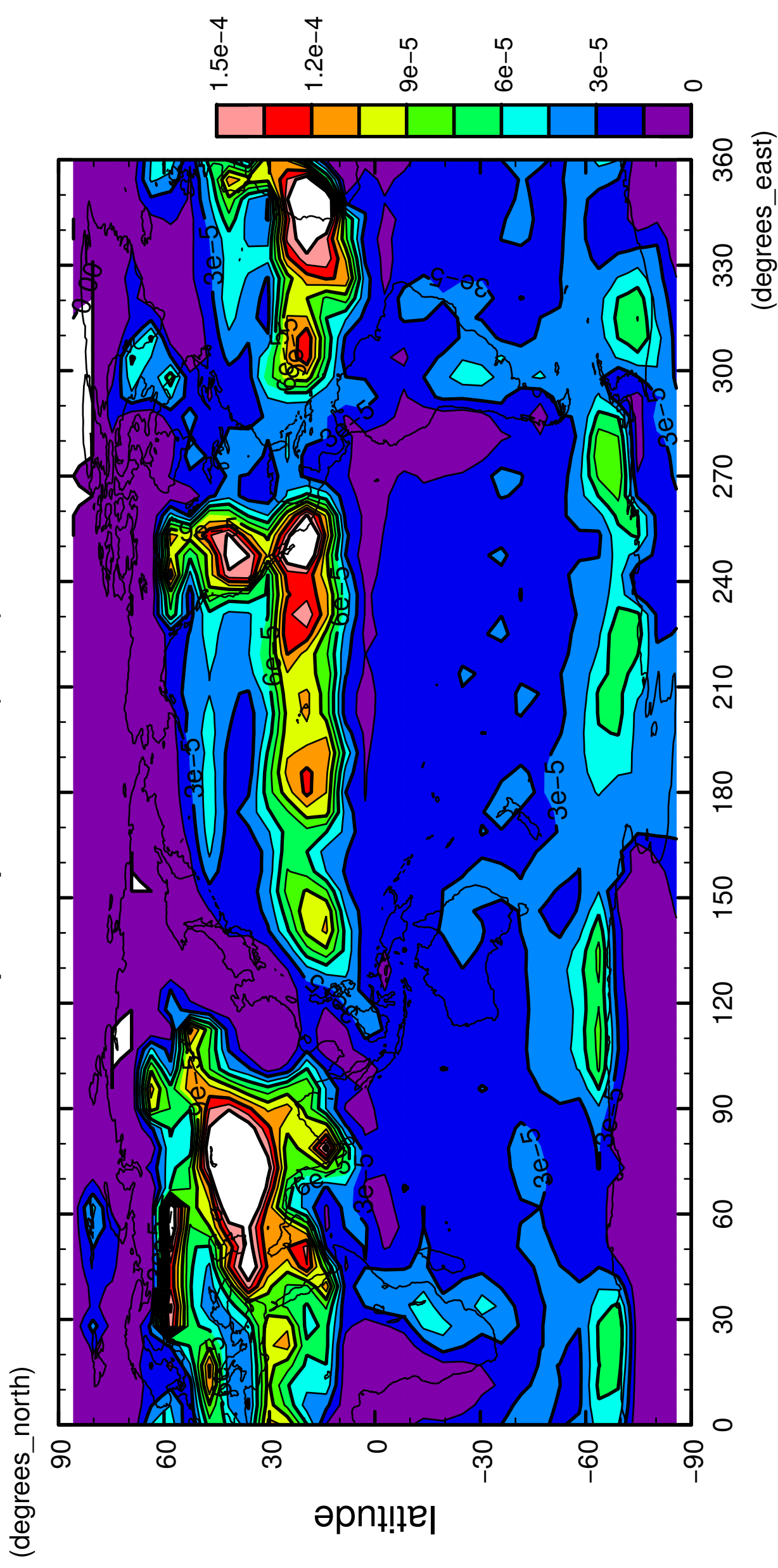
longitude  
CONTOUR INTERVAL = 1.500E-05





5/12

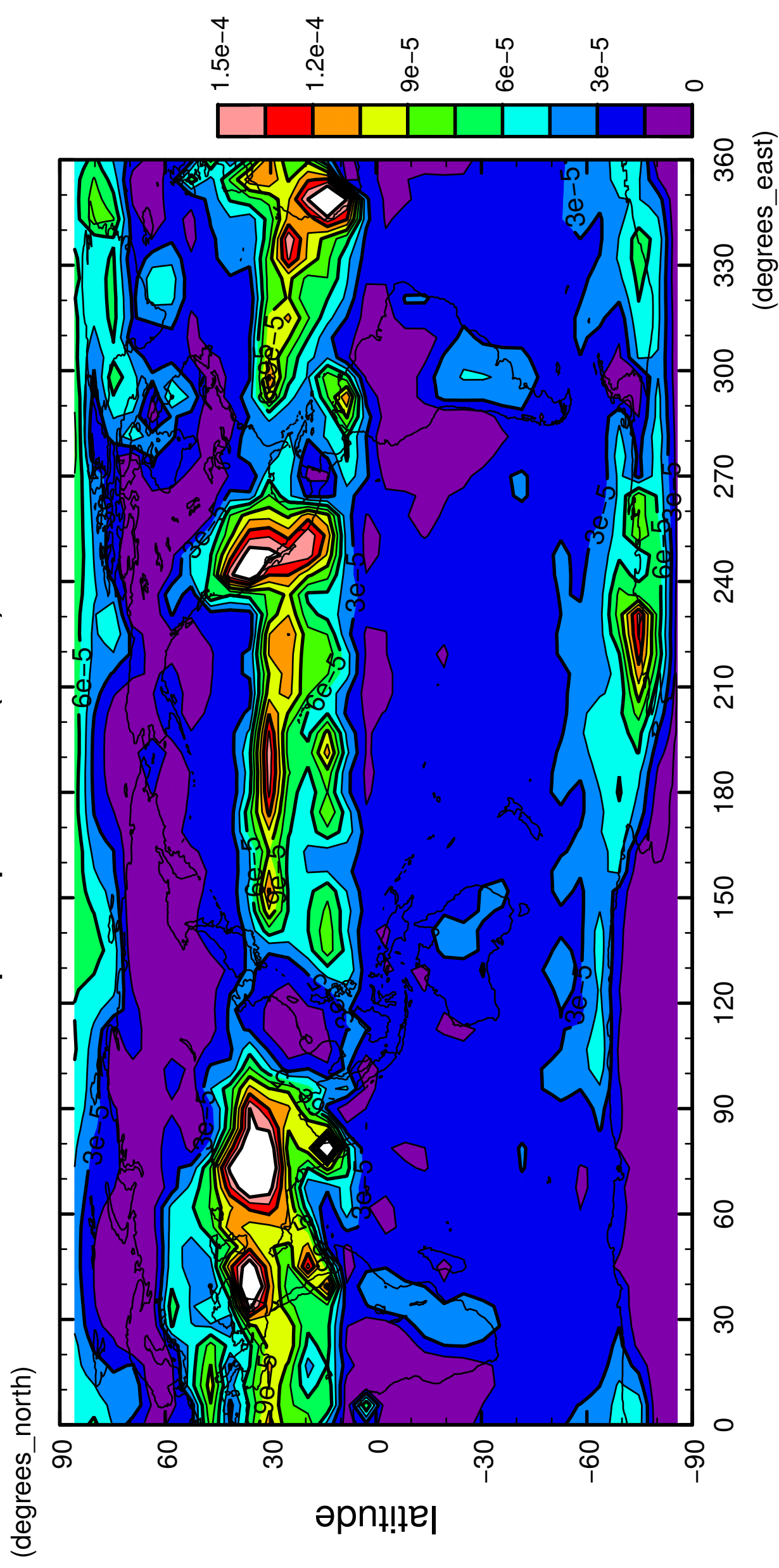
# precipitation (rain)



longitude  
CONTOUR INTERVAL = 1.500E-05

6/12

precipitation (rain)

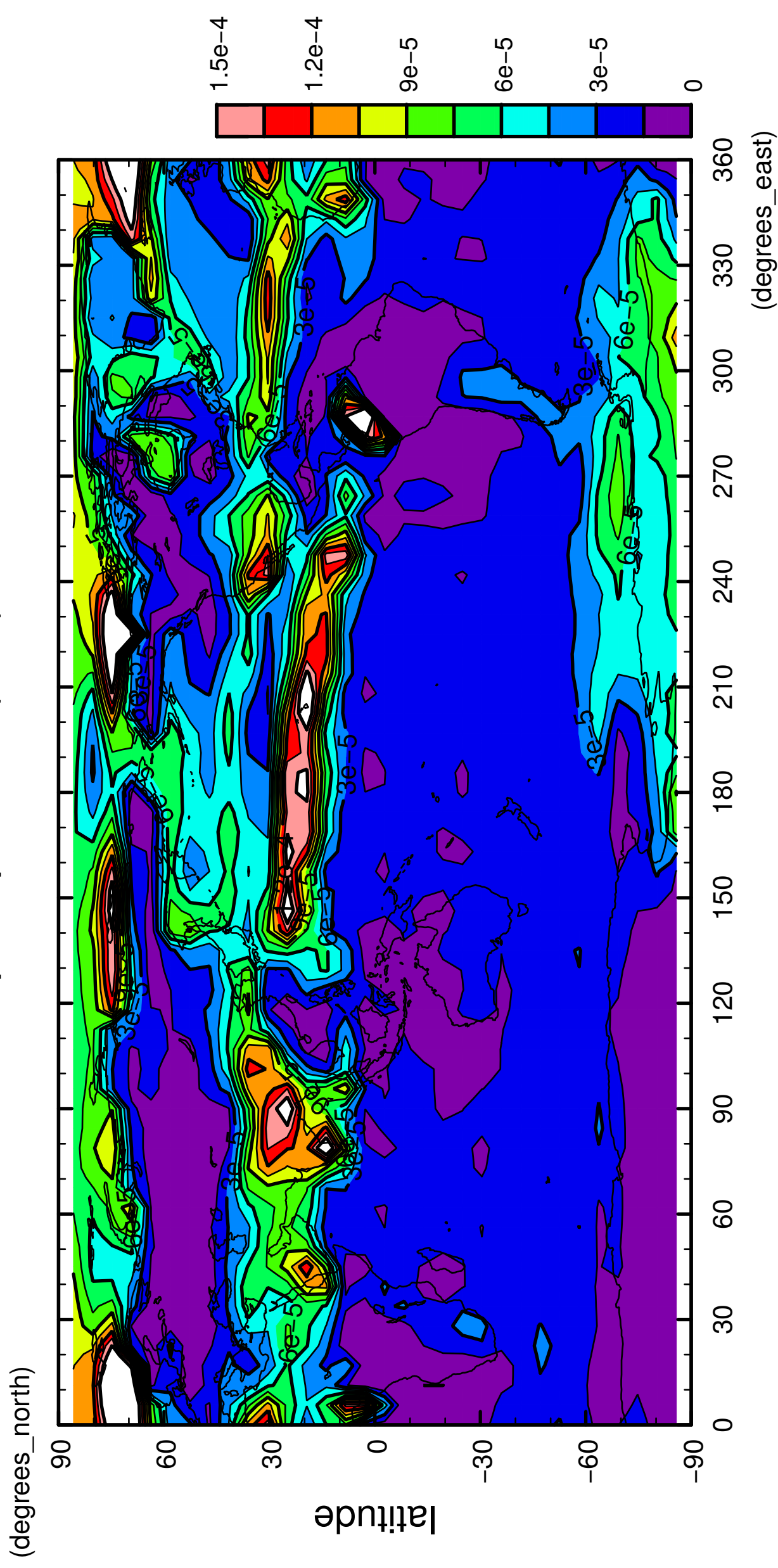


longitude

CONTOUR INTERVAL = 1.500E-05

7/12

# precipitation (rain)

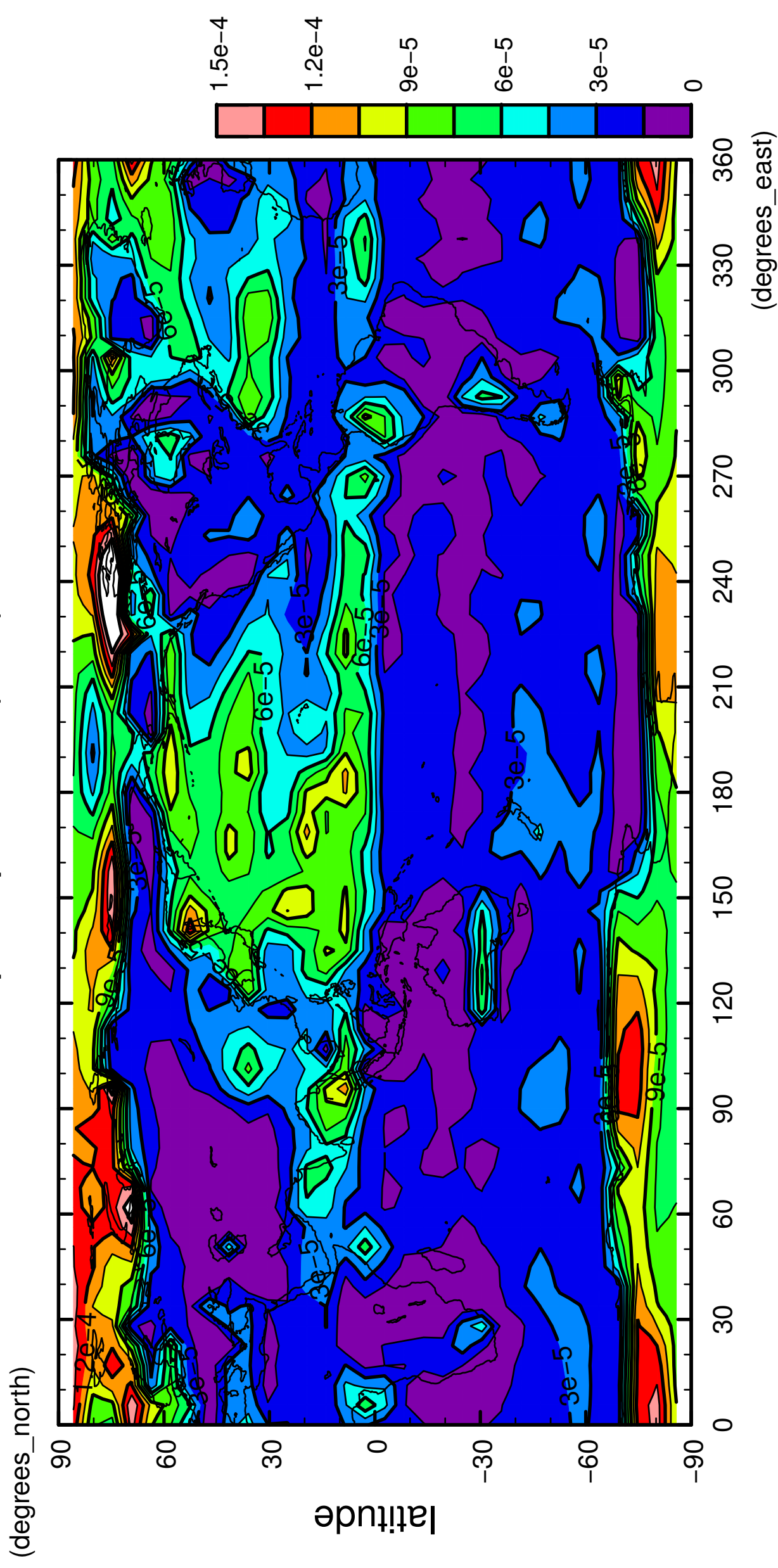


longitude

CONTOUR INTERVAL = 1.500E-05

8/12

# precipitation (rain)



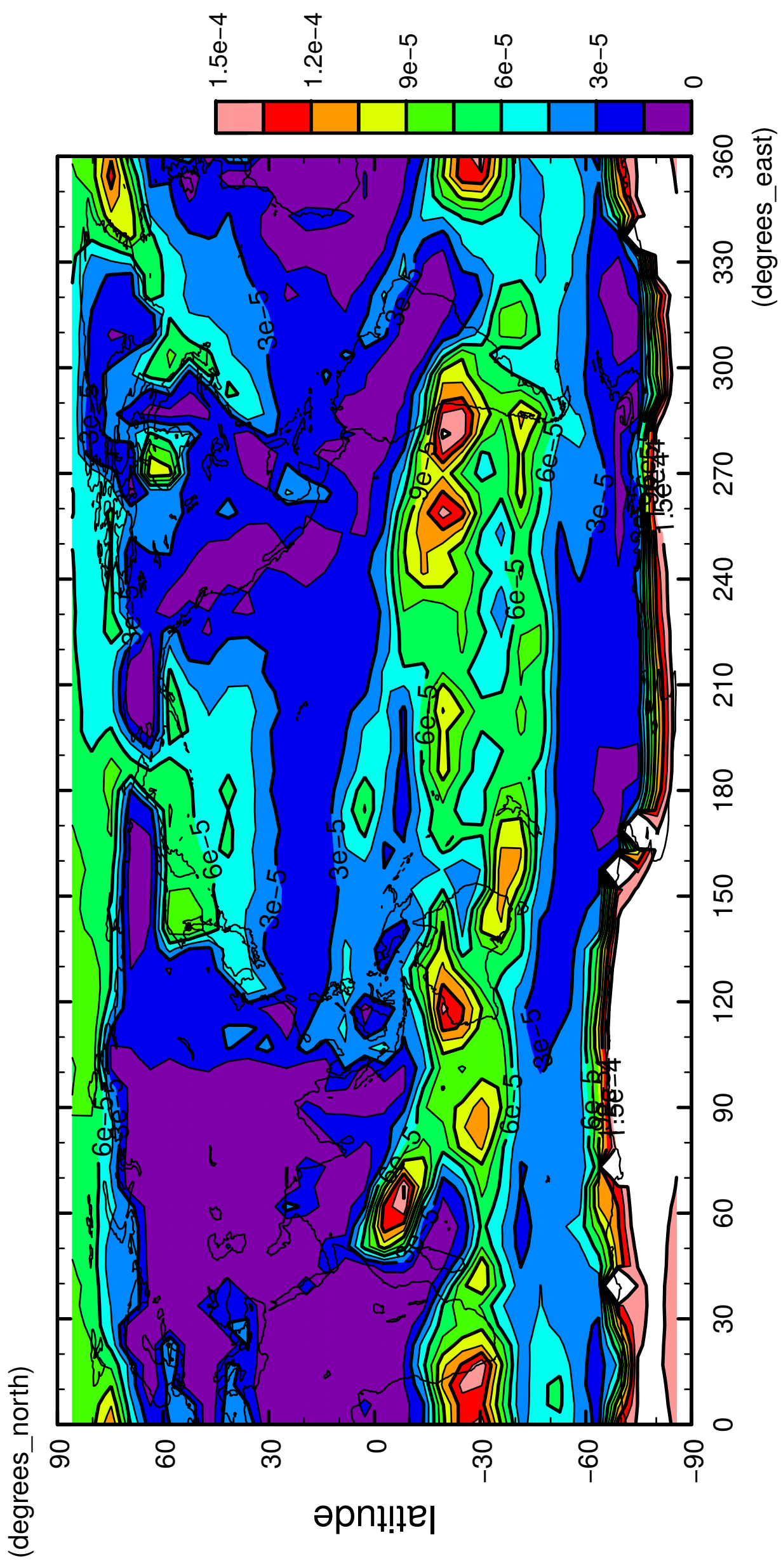
longitude  
CONTOUR INTERVAL = 1.500E-05





10/12

precipitation (rain)

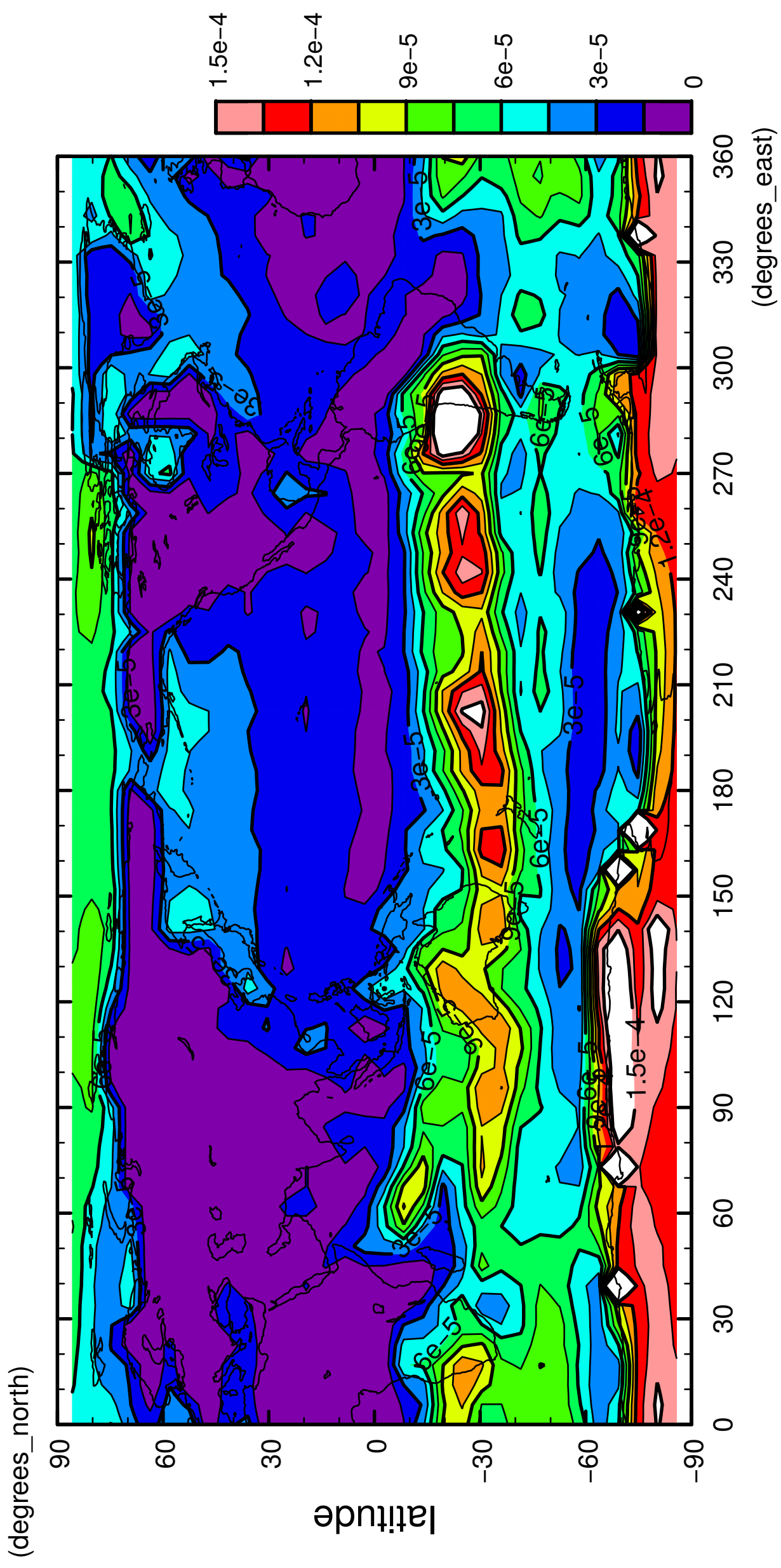


longitude

CONTOUR INTERVAL = 1.500E-05

11/12

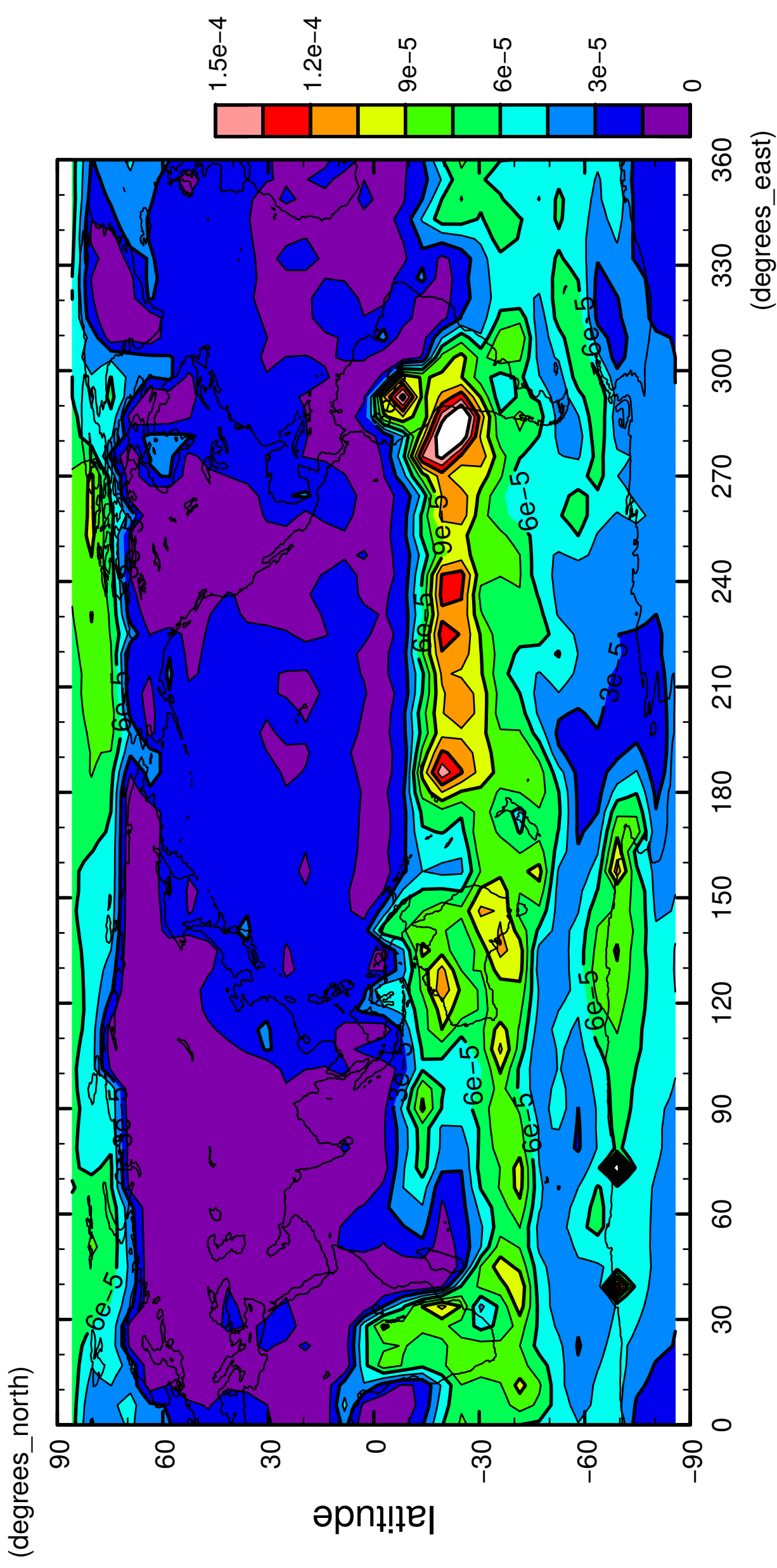
# precipitation (rain)



longitude  
CONTOUR INTERVAL = 1.500E-05

12/12

precipitation (rain)



longitude  
CONTOUR INTERVAL = 1.500E-05