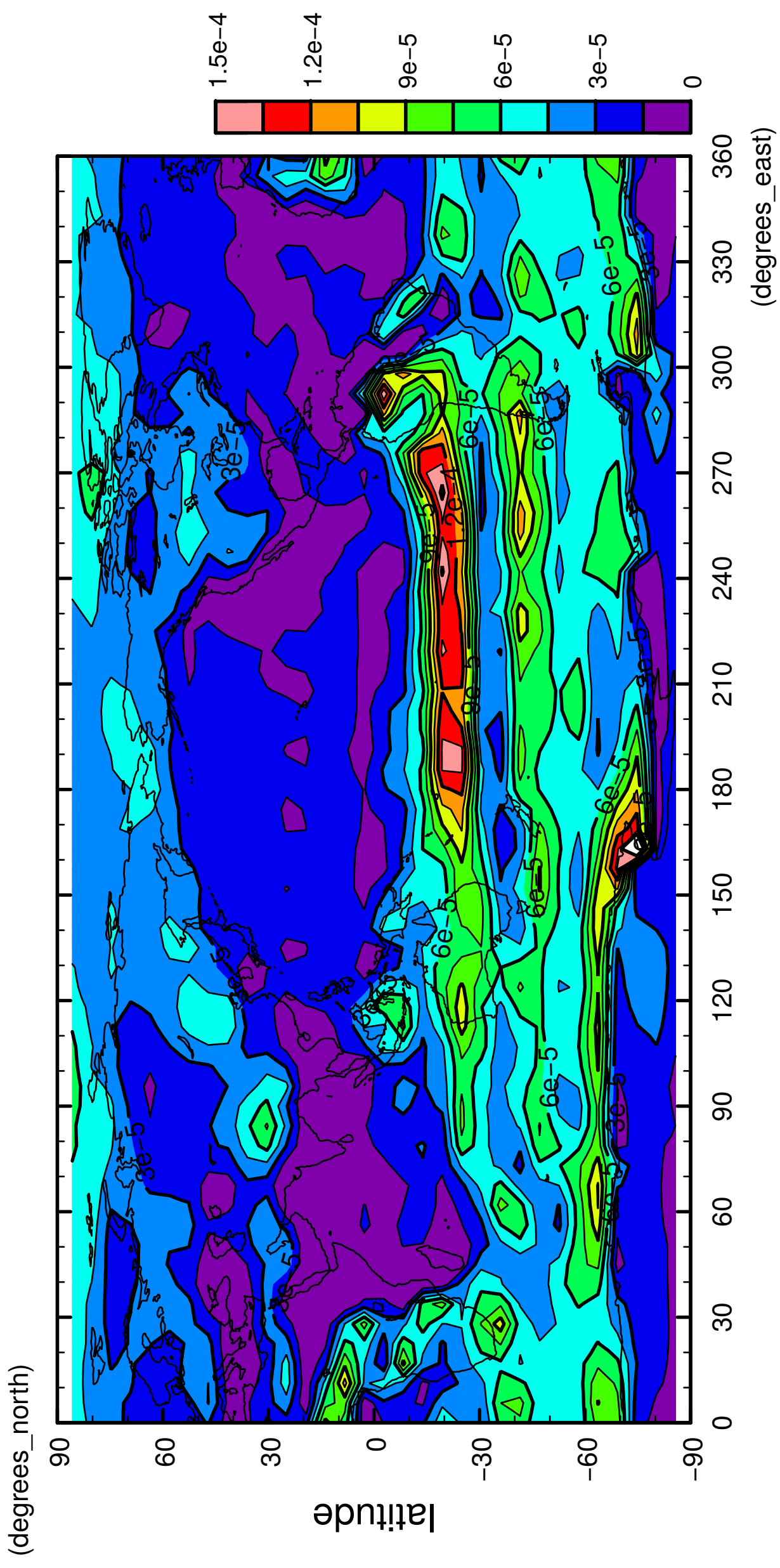


1/12

precipitation (rain + snow)

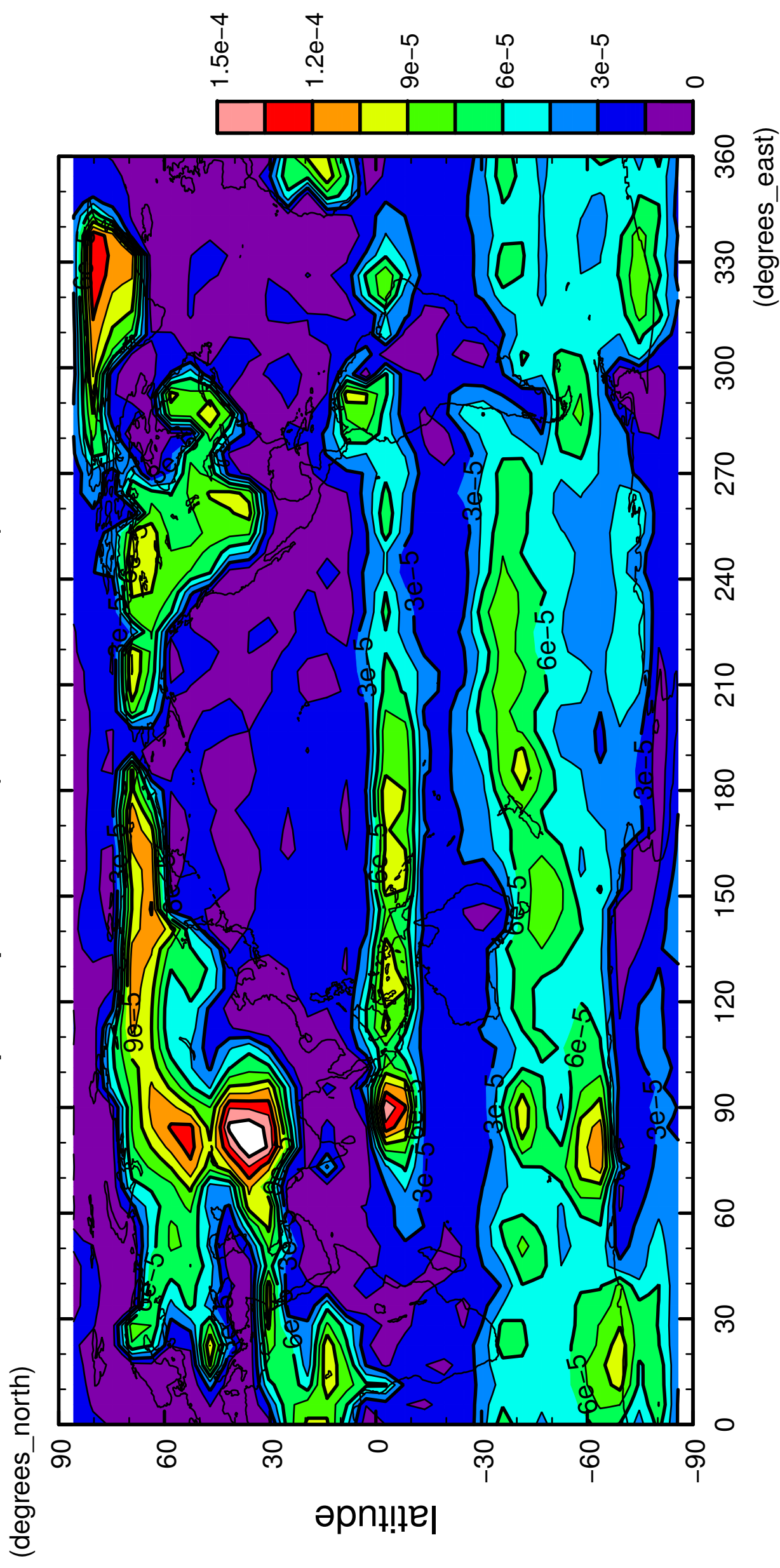


longitude

CONTOUR INTERVAL = 1.500E-05

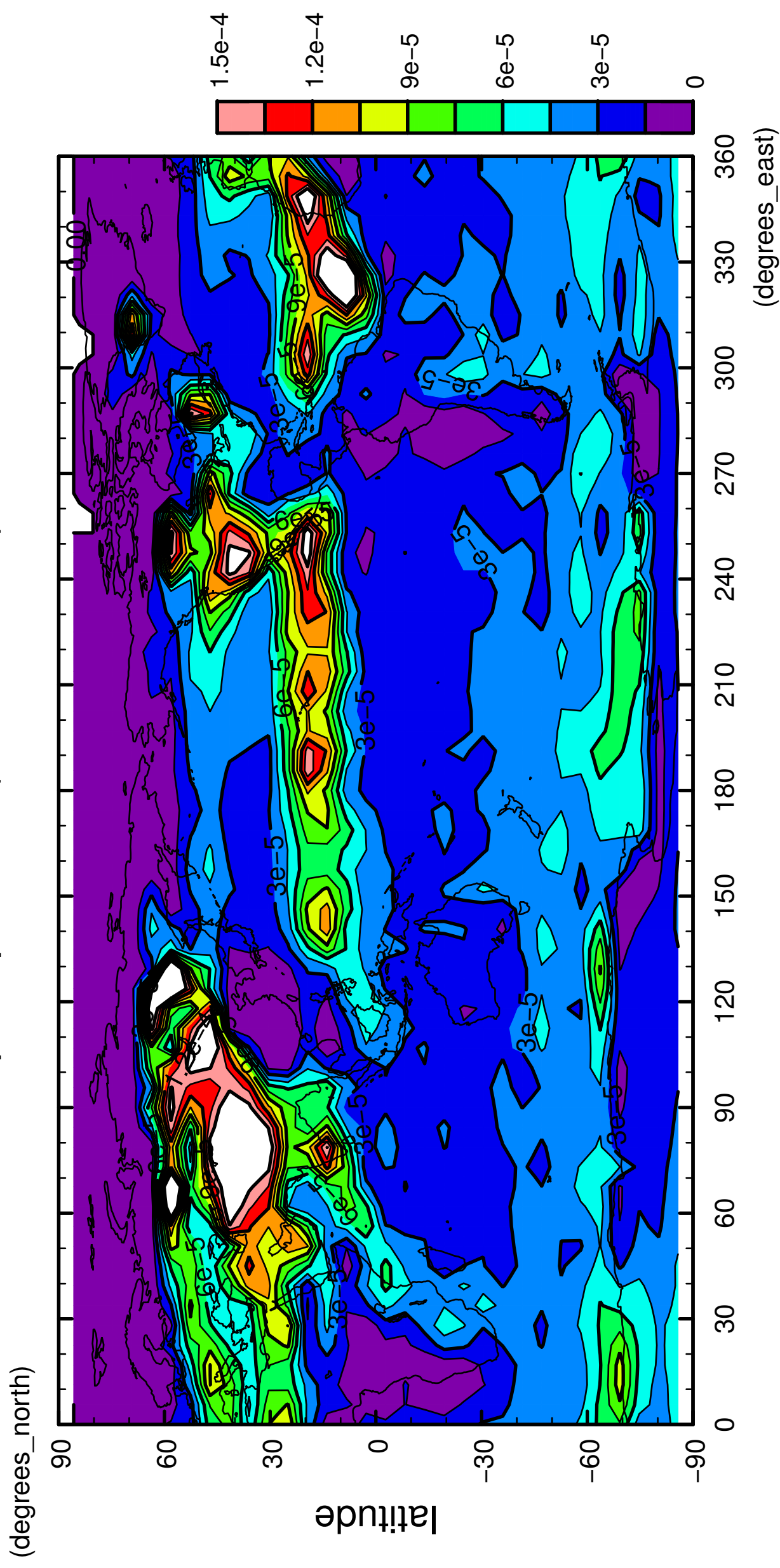
2/12

precipitation (rain + snow)



4/12

precipitation (rain + snow)

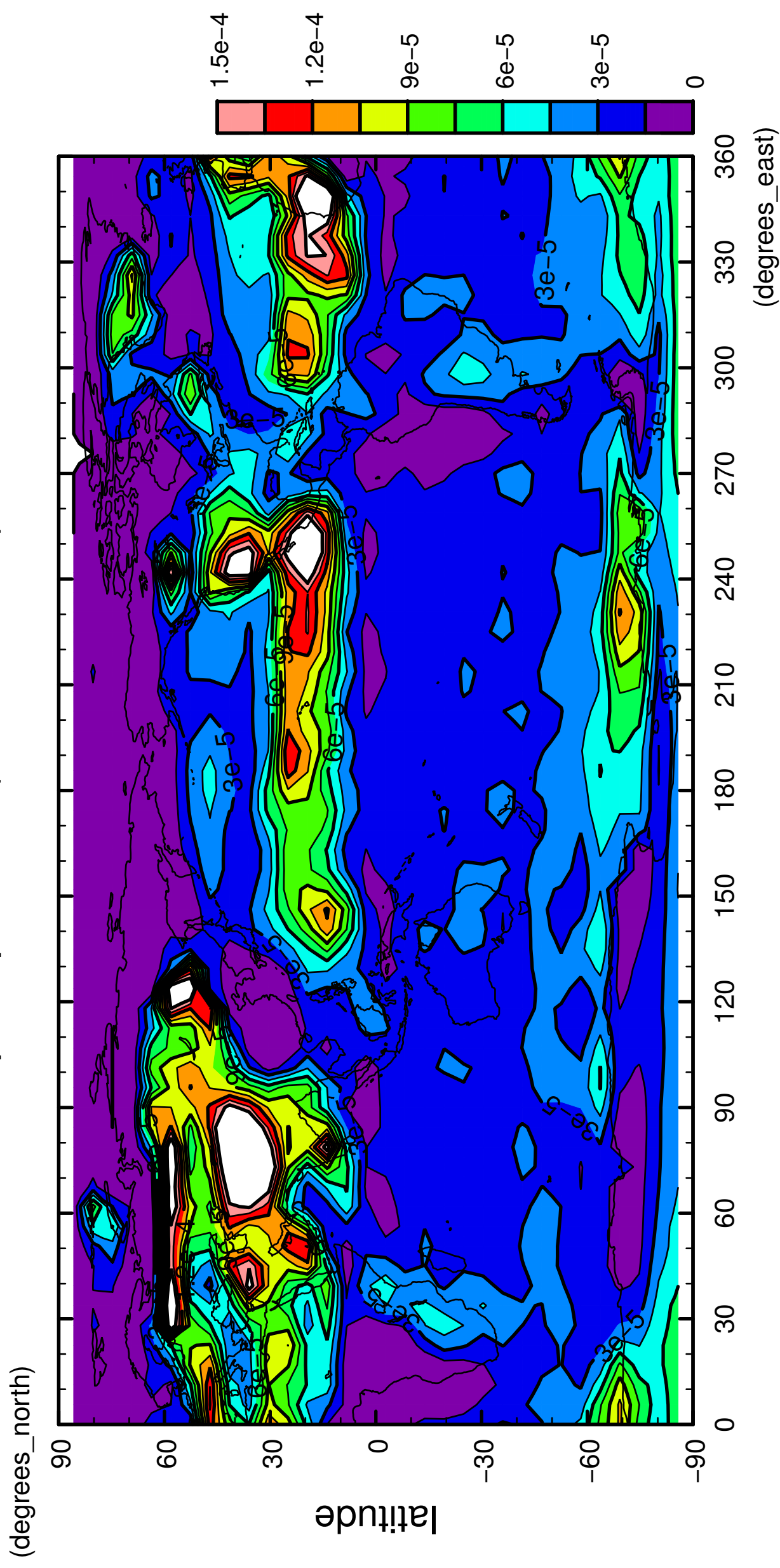


longitude

CONTOUR INTERVAL = 1.500E-05

5/12

precipitation (rain + snow)

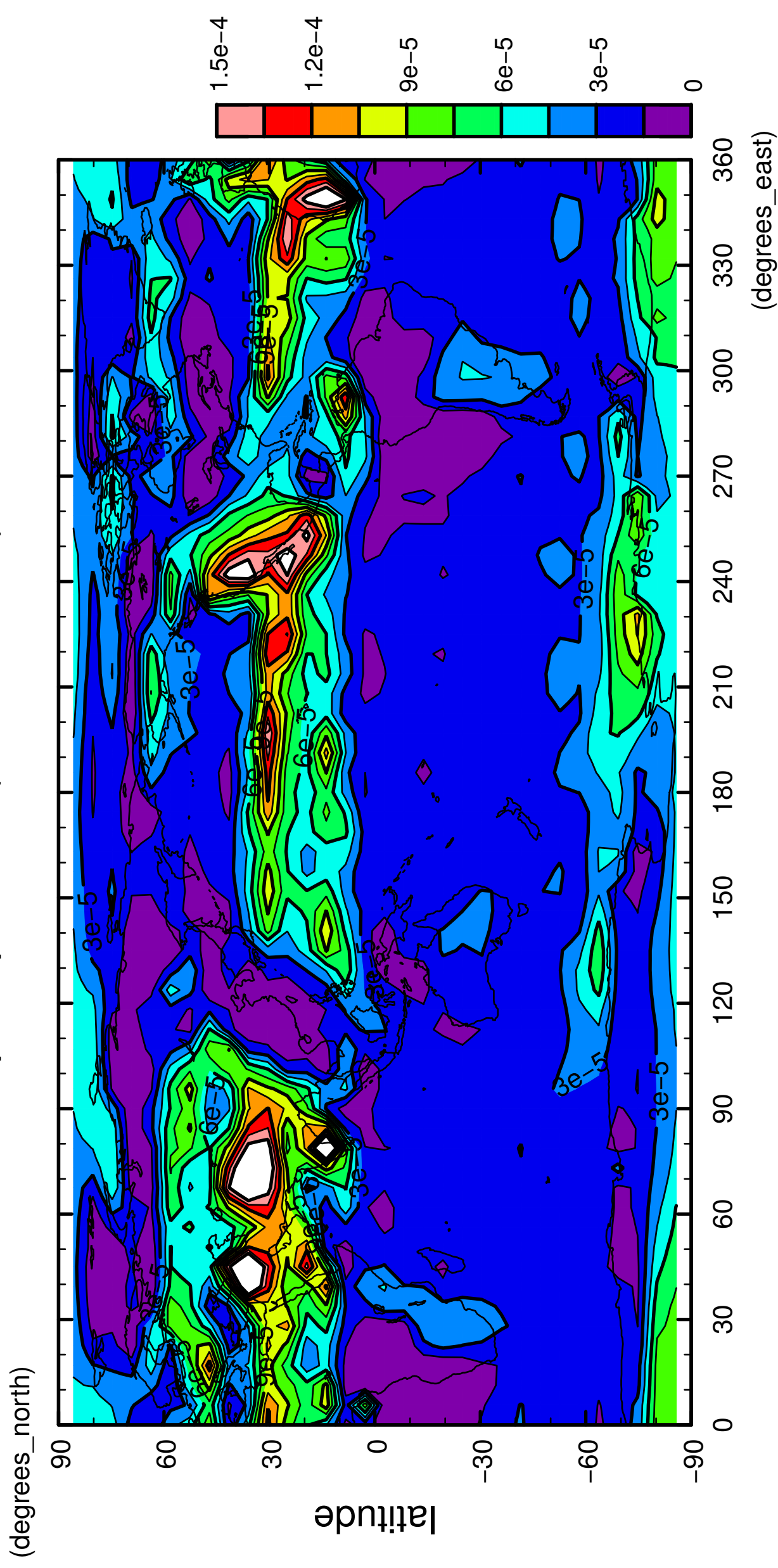


longitude

CONTOUR INTERVAL = 1.500E-05

6/12

precipitation (rain + snow)

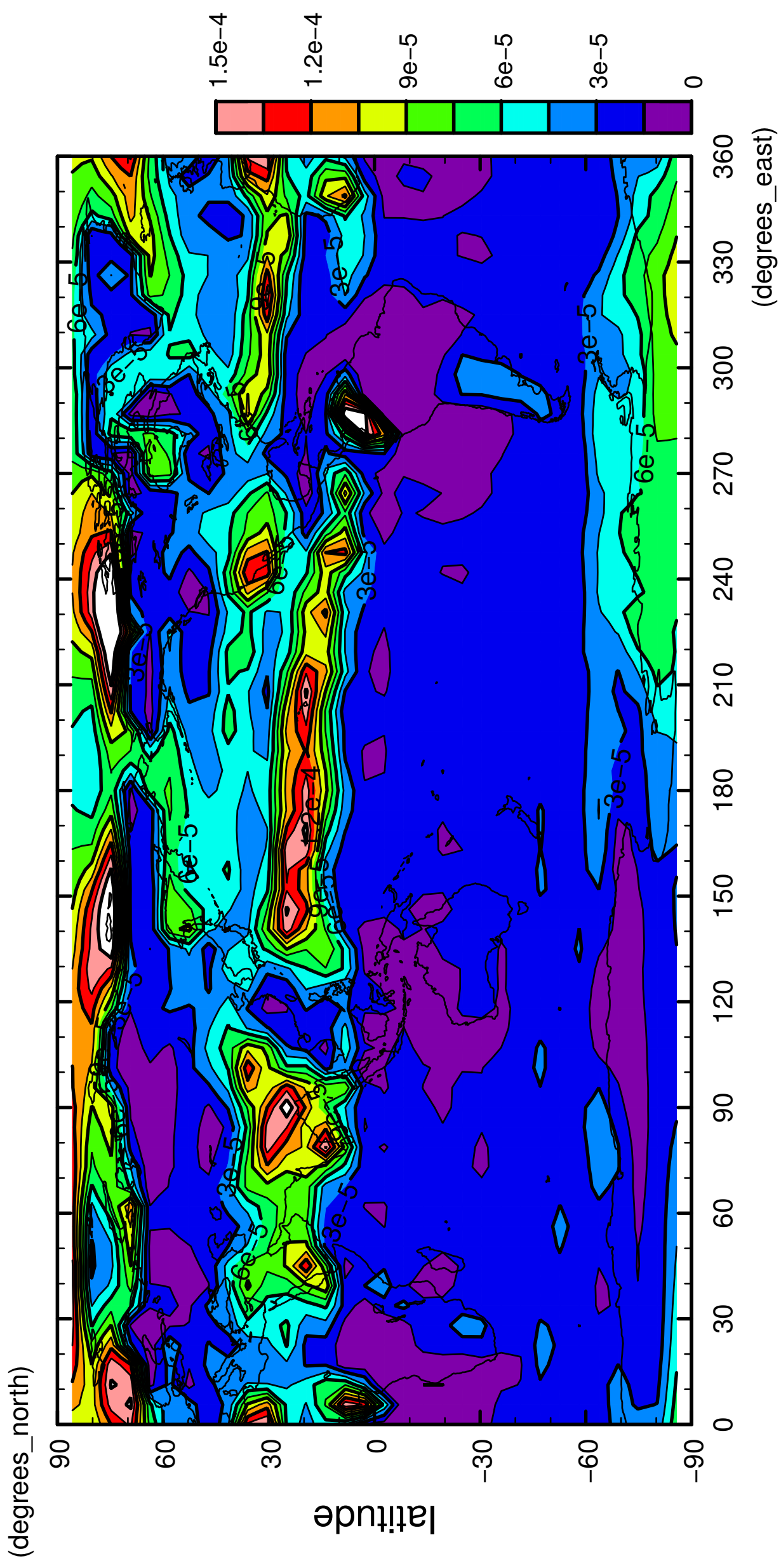


longitude

CONTOUR INTERVAL = 1.500×10^{-5}

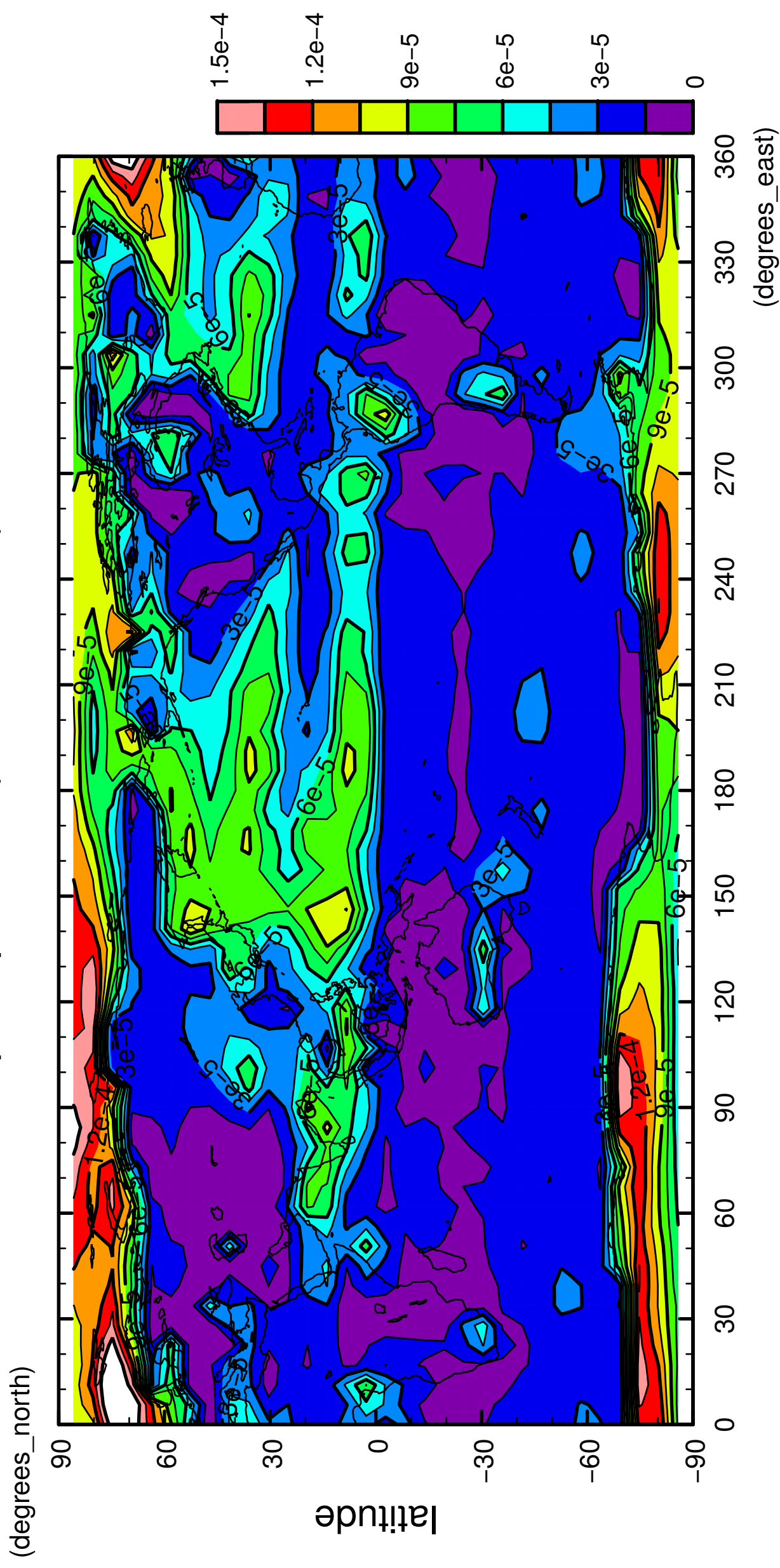
7/12

precipitation (rain + snow)



8/12

precipitation (rain + snow)

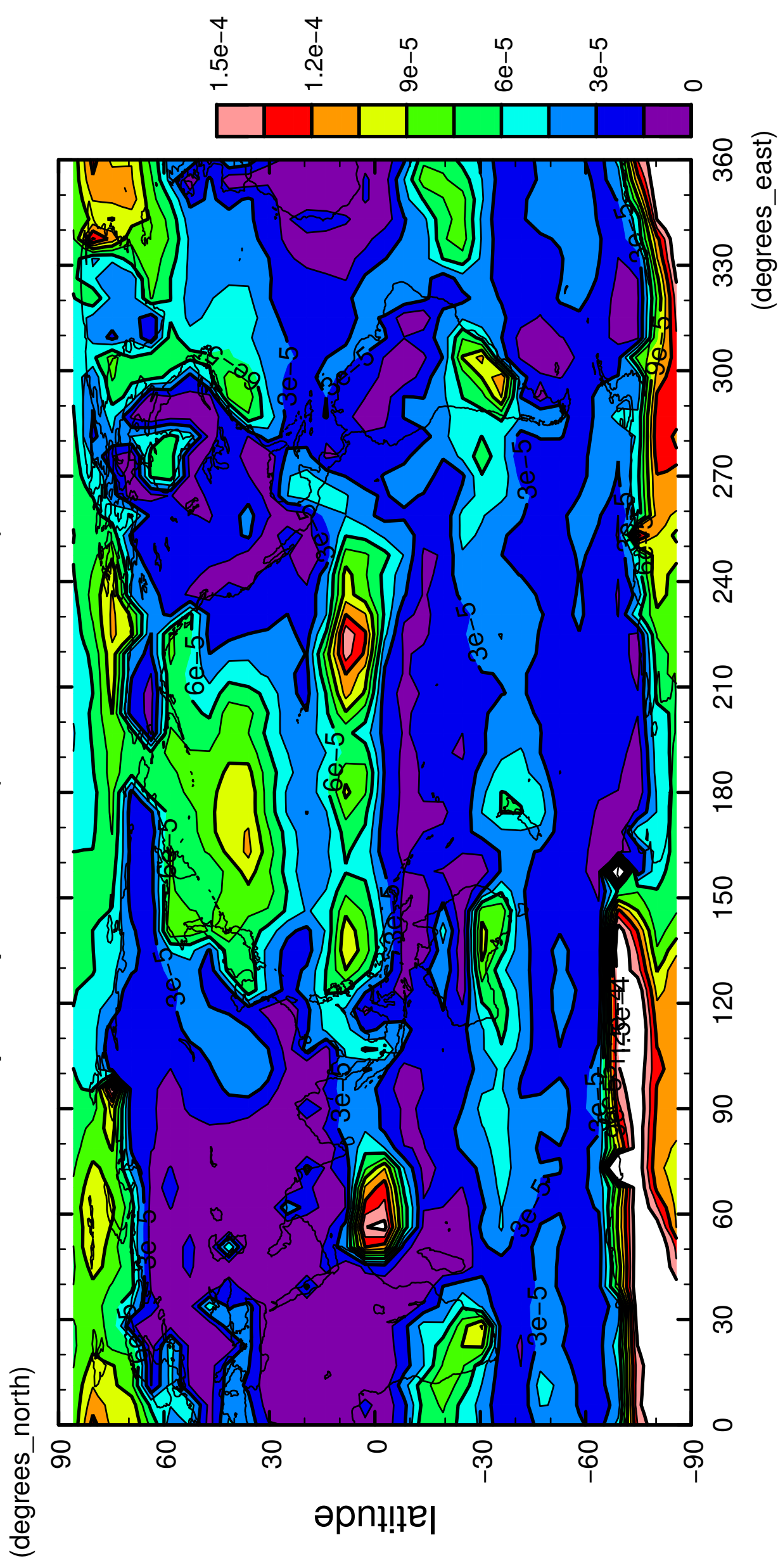


longitude

CONTOUR INTERVAL = 1.500E-05

9/12

precipitation (rain + snow)

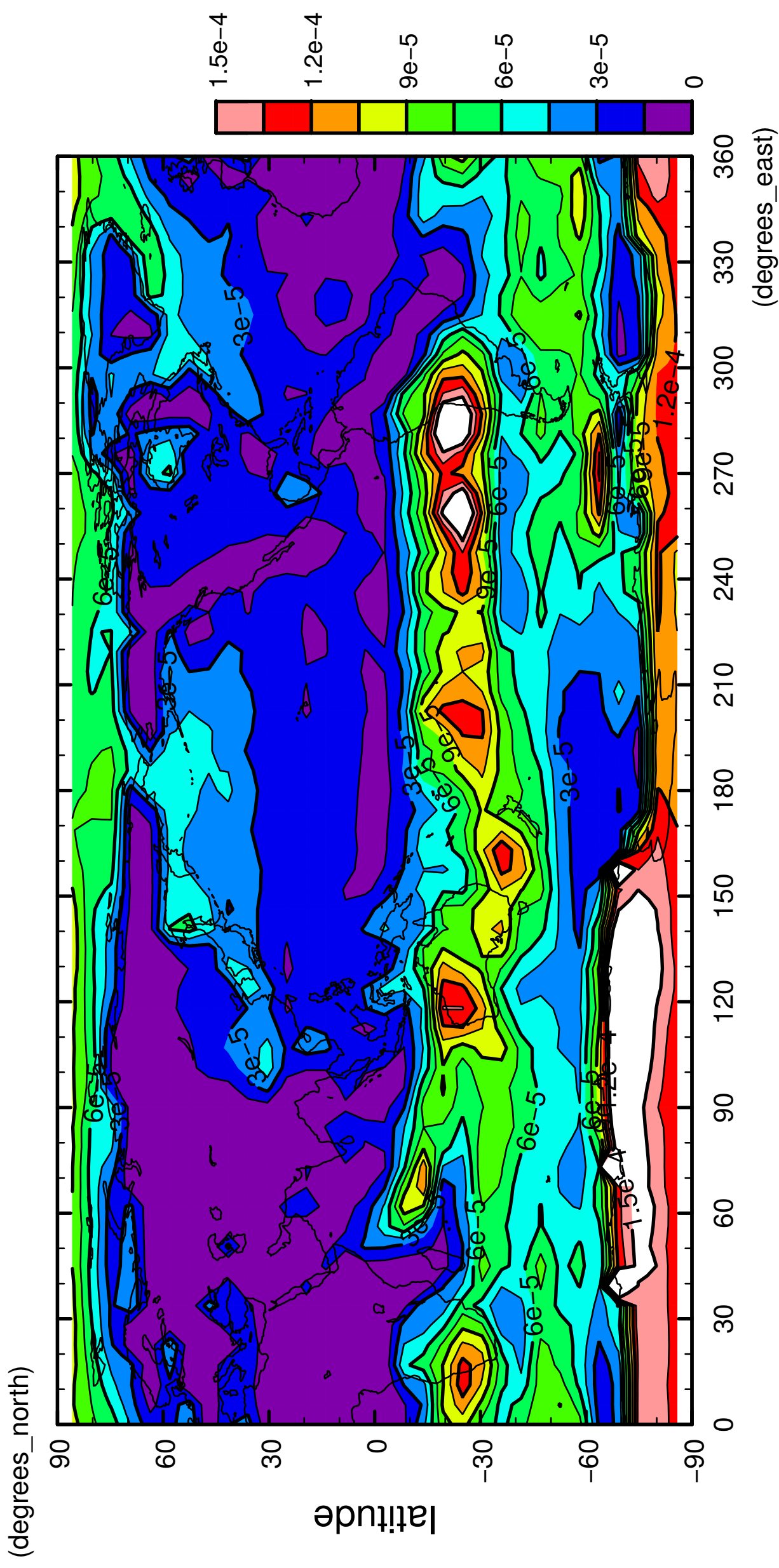


longitude

CONTOUR INTERVAL = 1.500E-05

11/12

precipitation (rain + snow)



12/12

precipitation (rain + snow)

