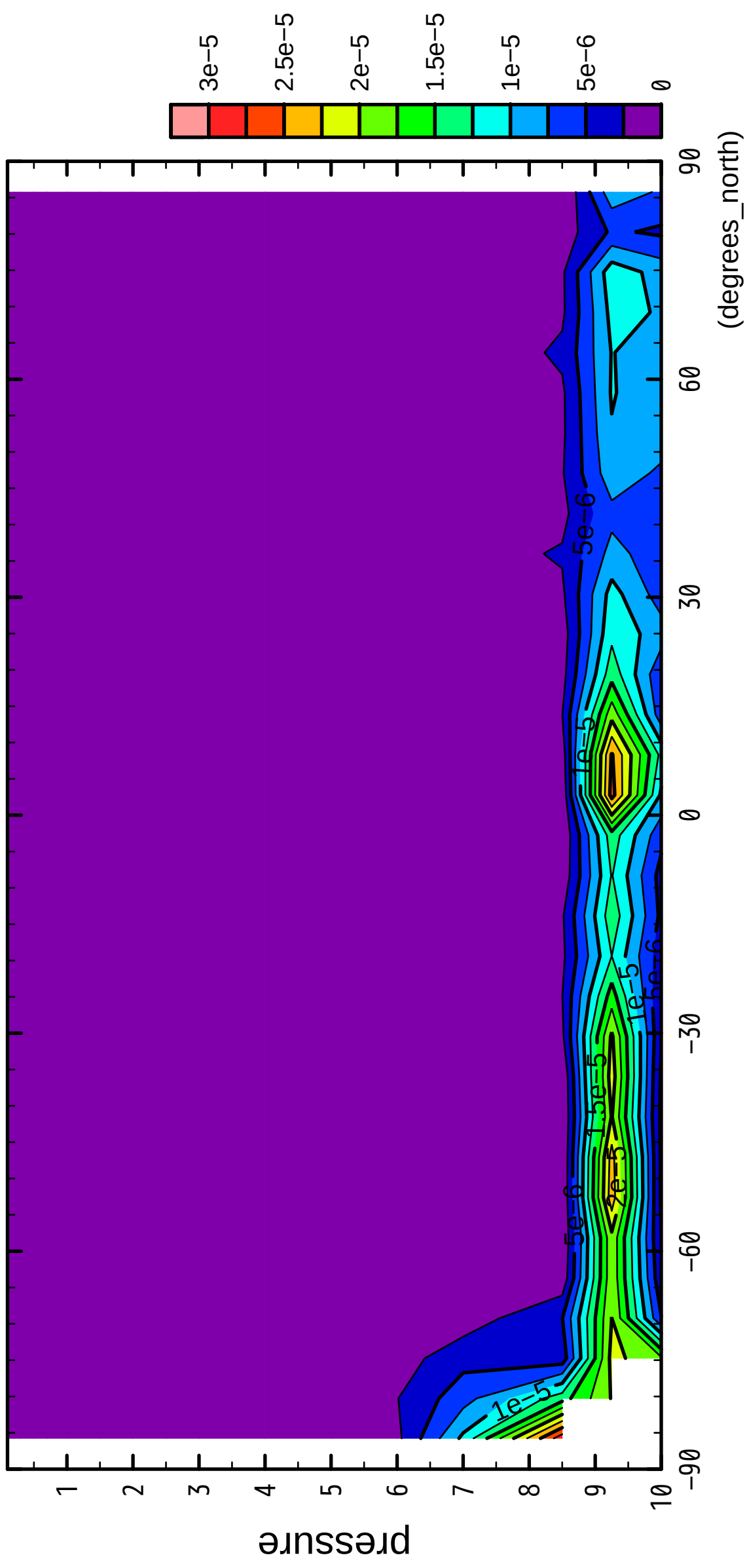


1/12

QH2OLiq

( $\times 10^4$  Pa)

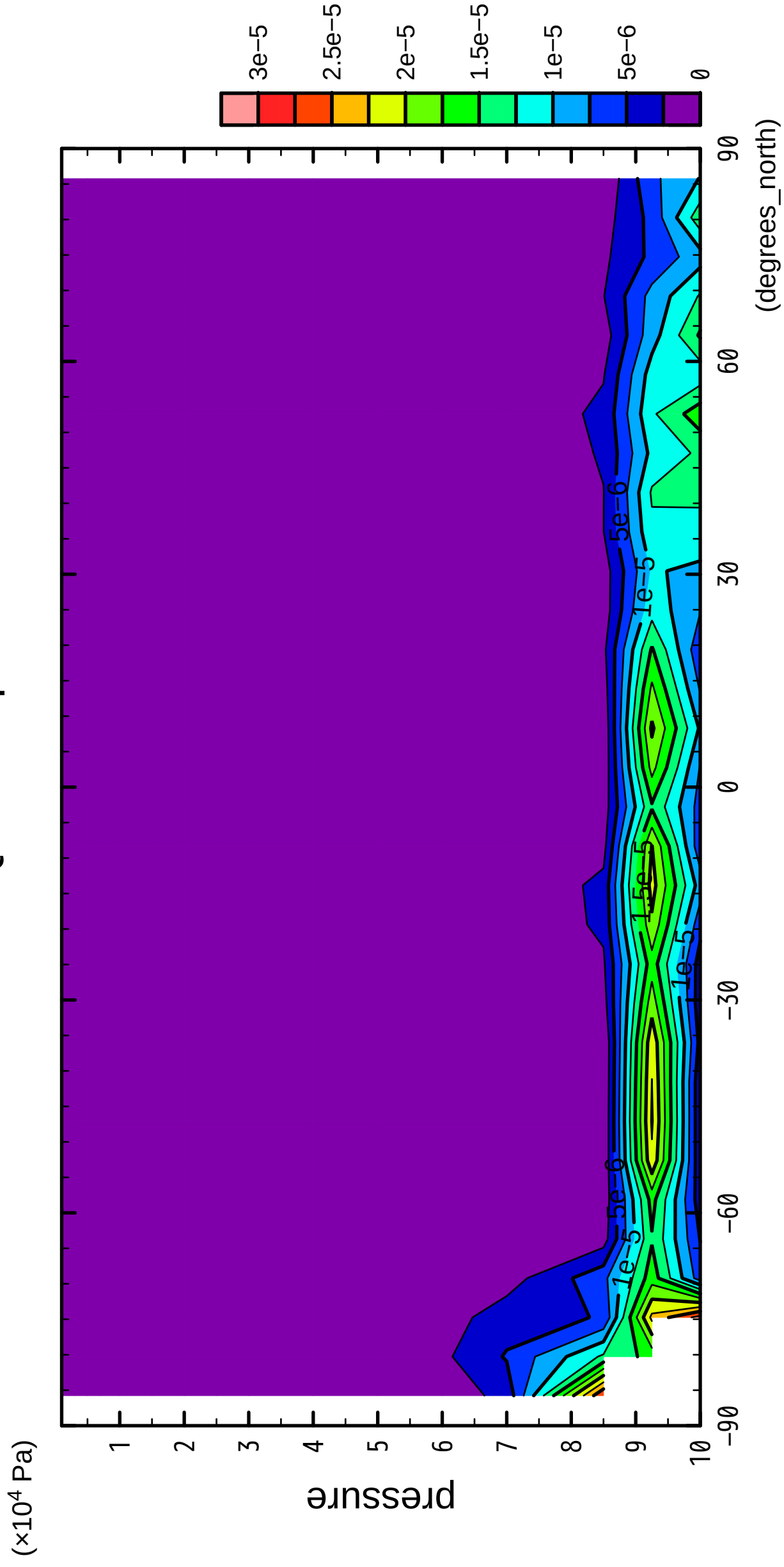


latitude

CONTOUR INTERVAL =  $2.500E-06$

2/12

QH2OLiq



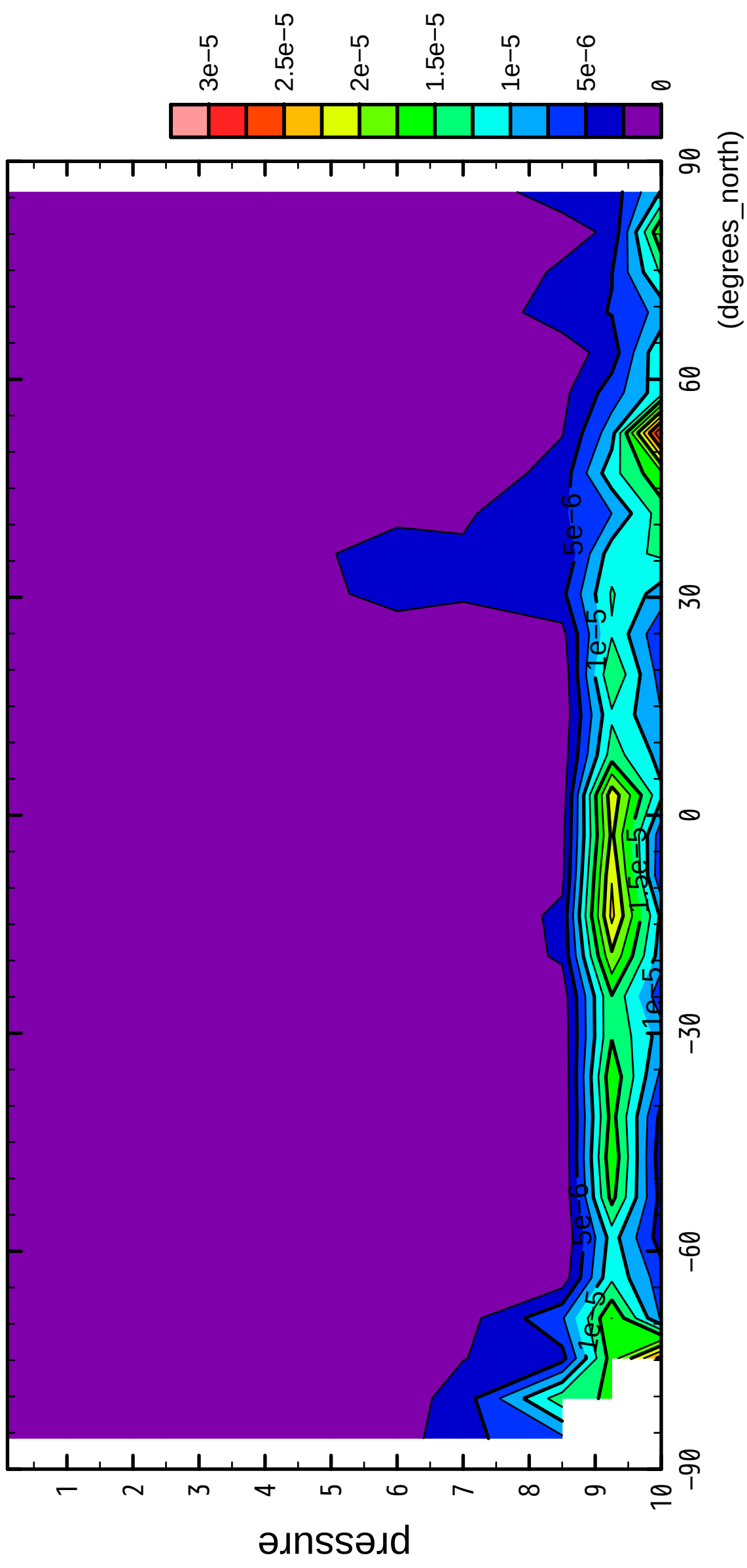
latitude

CONTOUR INTERVAL =  $2.500 \times 10^{-6}$

3/12

QH2OLiq

( $\times 10^4$  Pa)



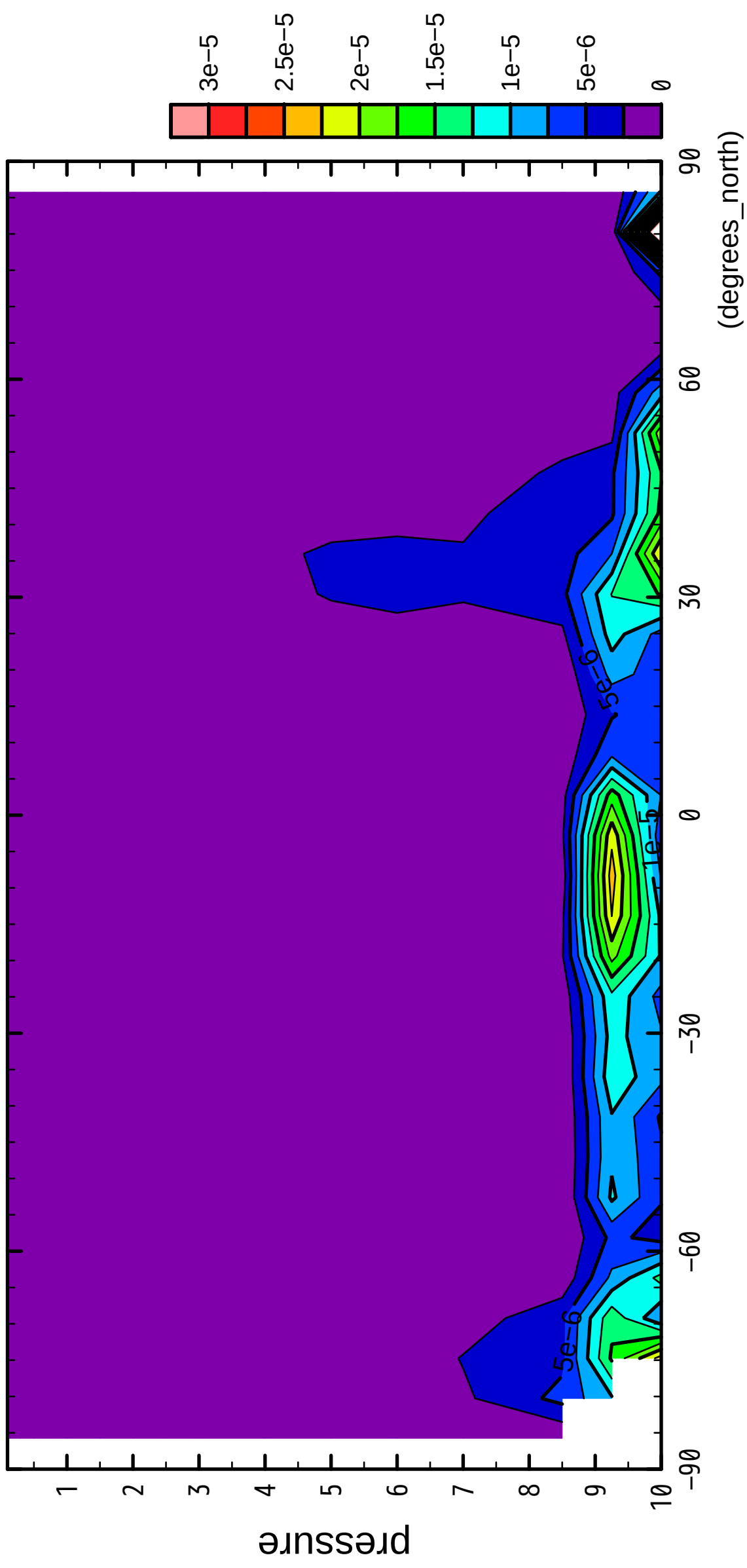
latitude

CONTOUR INTERVAL =  $2.500E-06$

4/12

QH2OLiq

( $\times 10^4$  Pa)



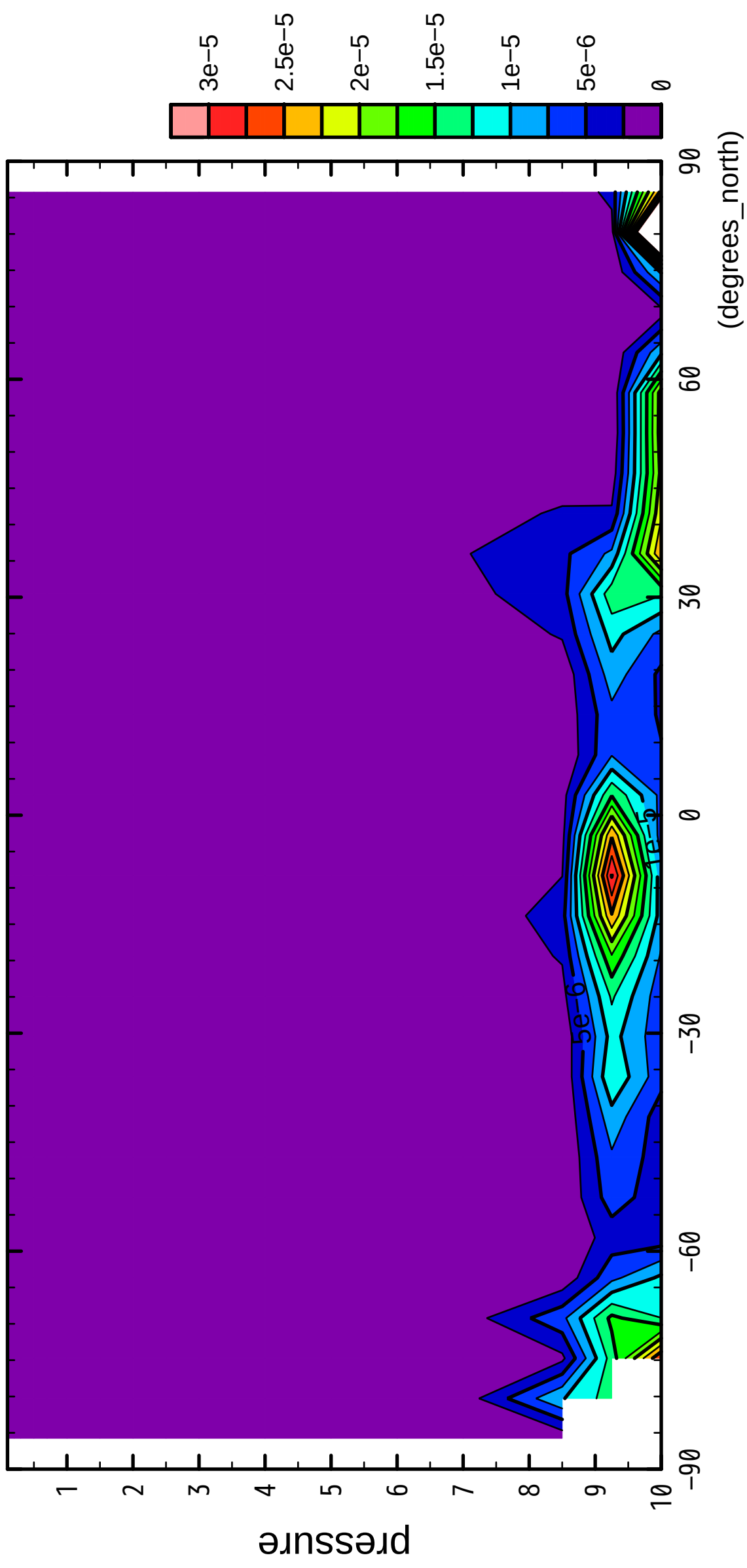
latitude

CONTOUR INTERVAL =  $2.500E-06$

5/12

QH2OLiq

( $\times 10^4$  Pa)



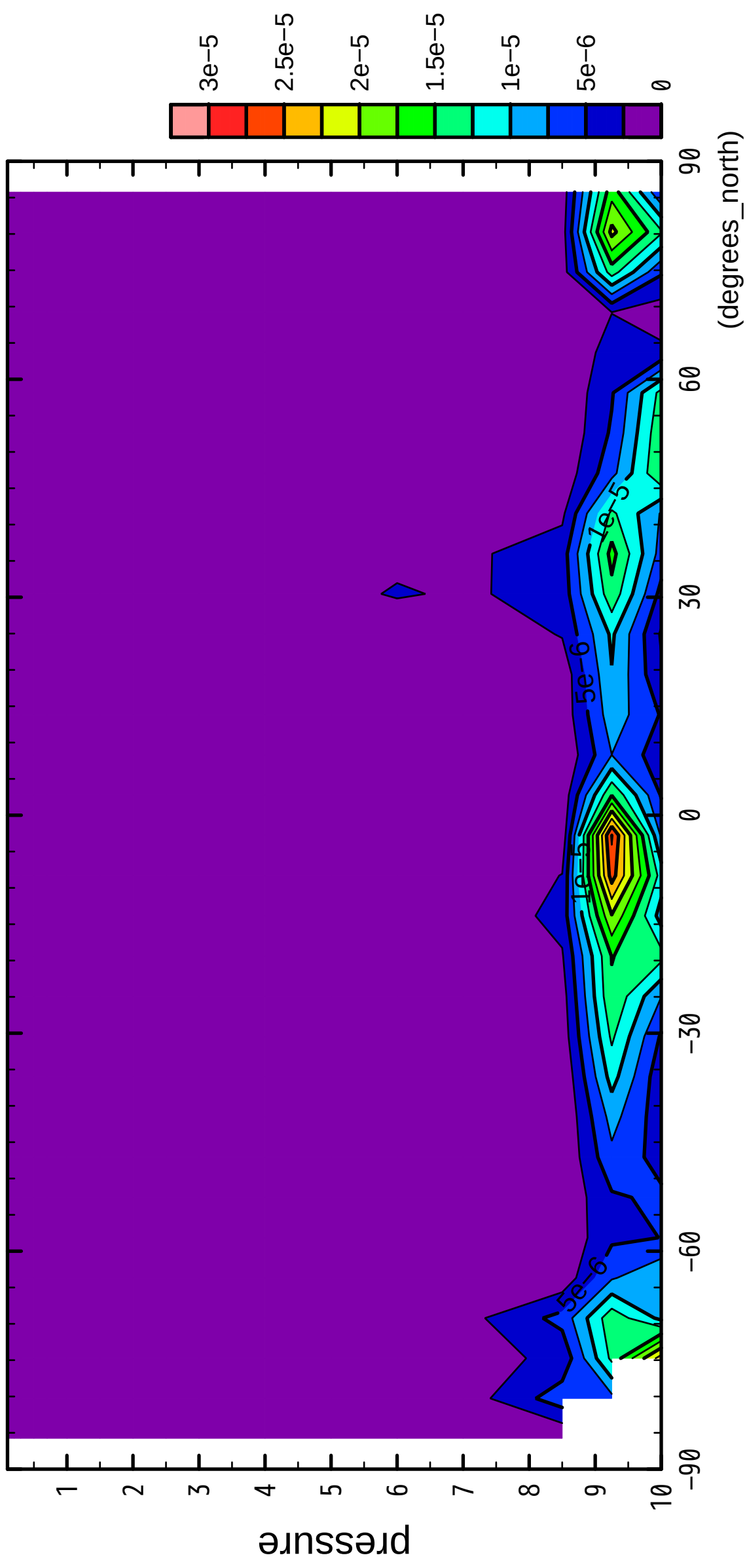
latitude

CONTOUR INTERVAL =  $2.500E-06$

6/12

QH2OLiq

( $\times 10^4$  Pa)

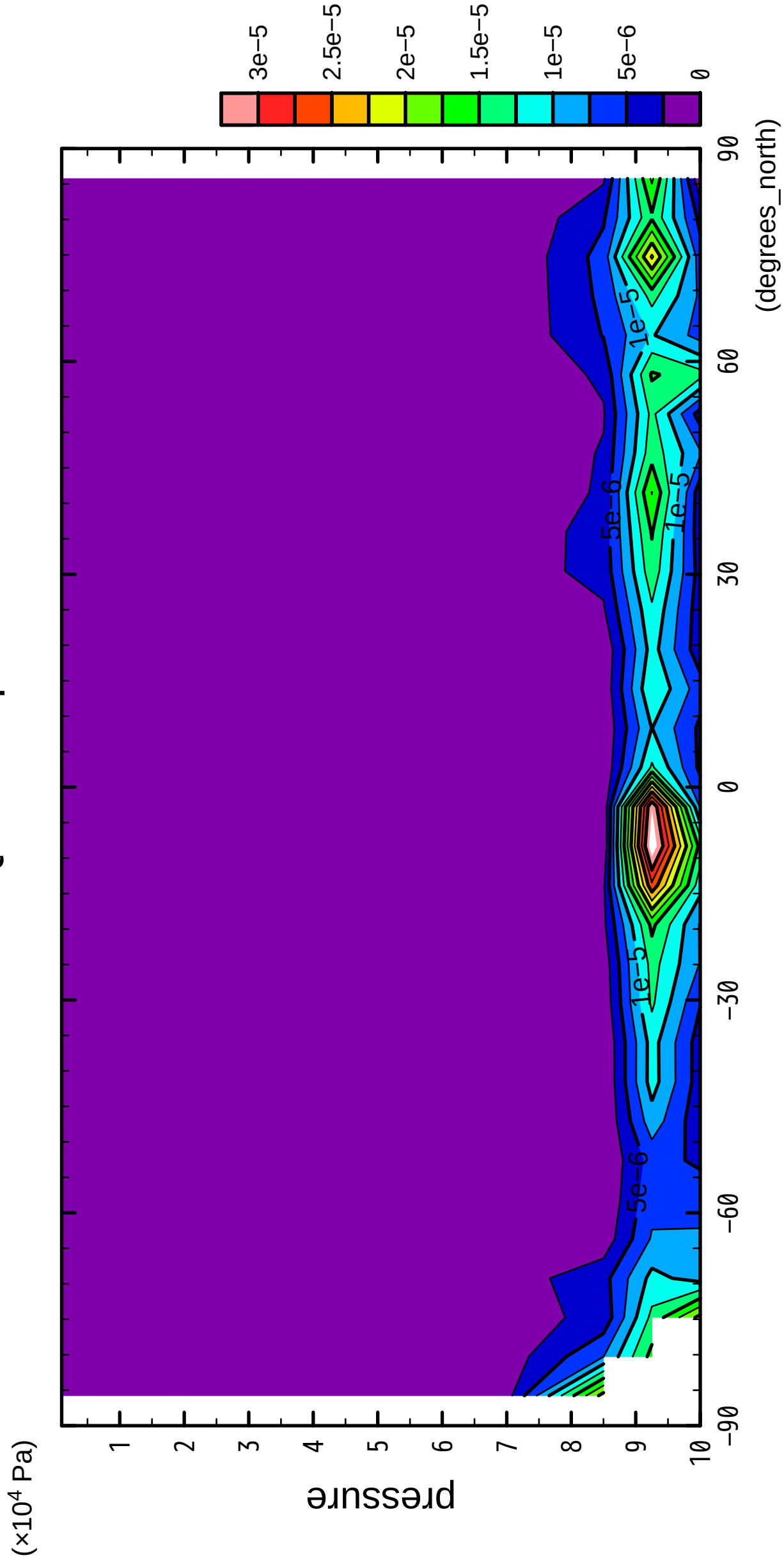


latitude

CONTOUR INTERVAL =  $2.500 \times 10^{-6}$

7/12

QH2OLiq



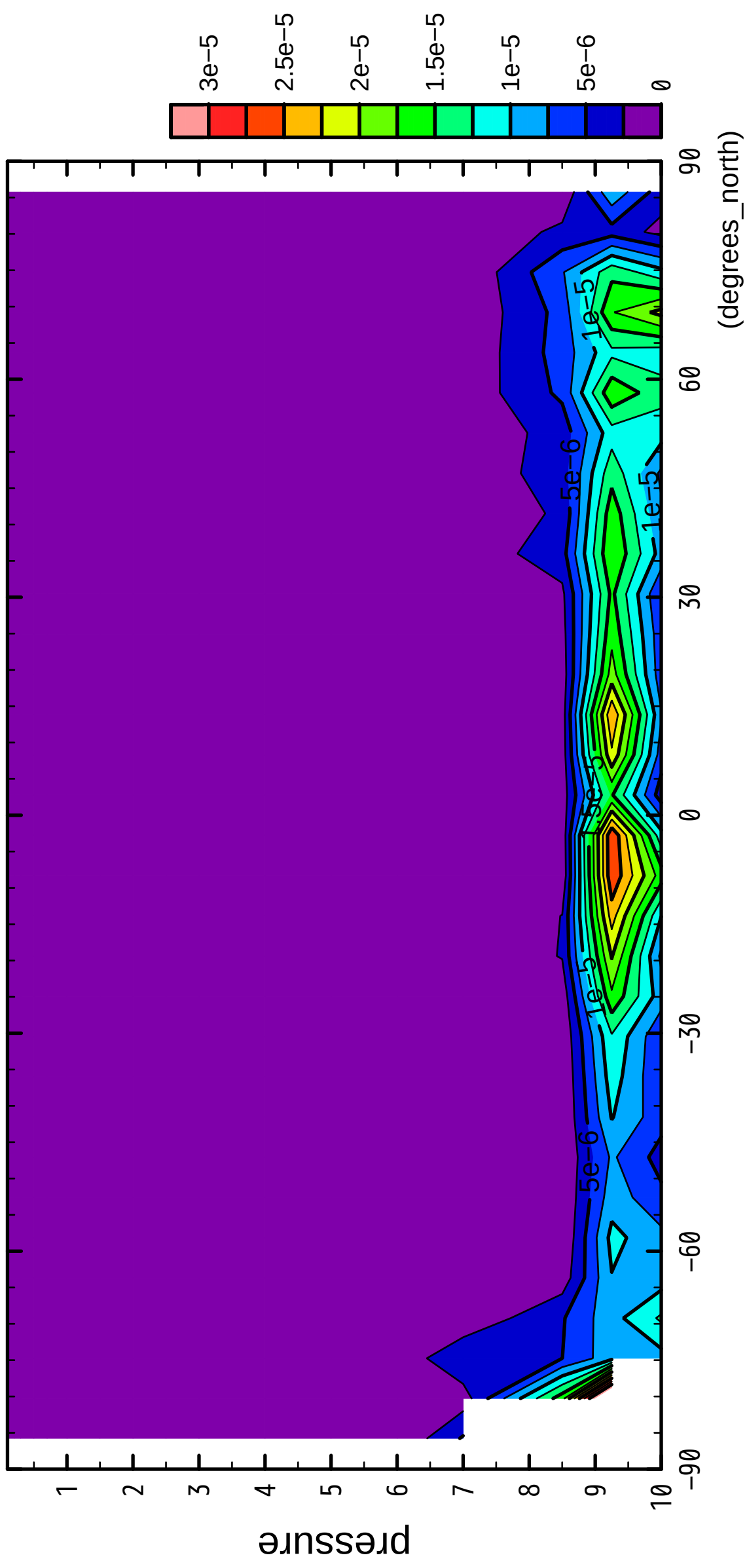
latitude

CONTOUR INTERVAL =  $2.500 \times 10^{-6}$

8/12

QH2OLiq

( $\times 10^4$  Pa)



latitude

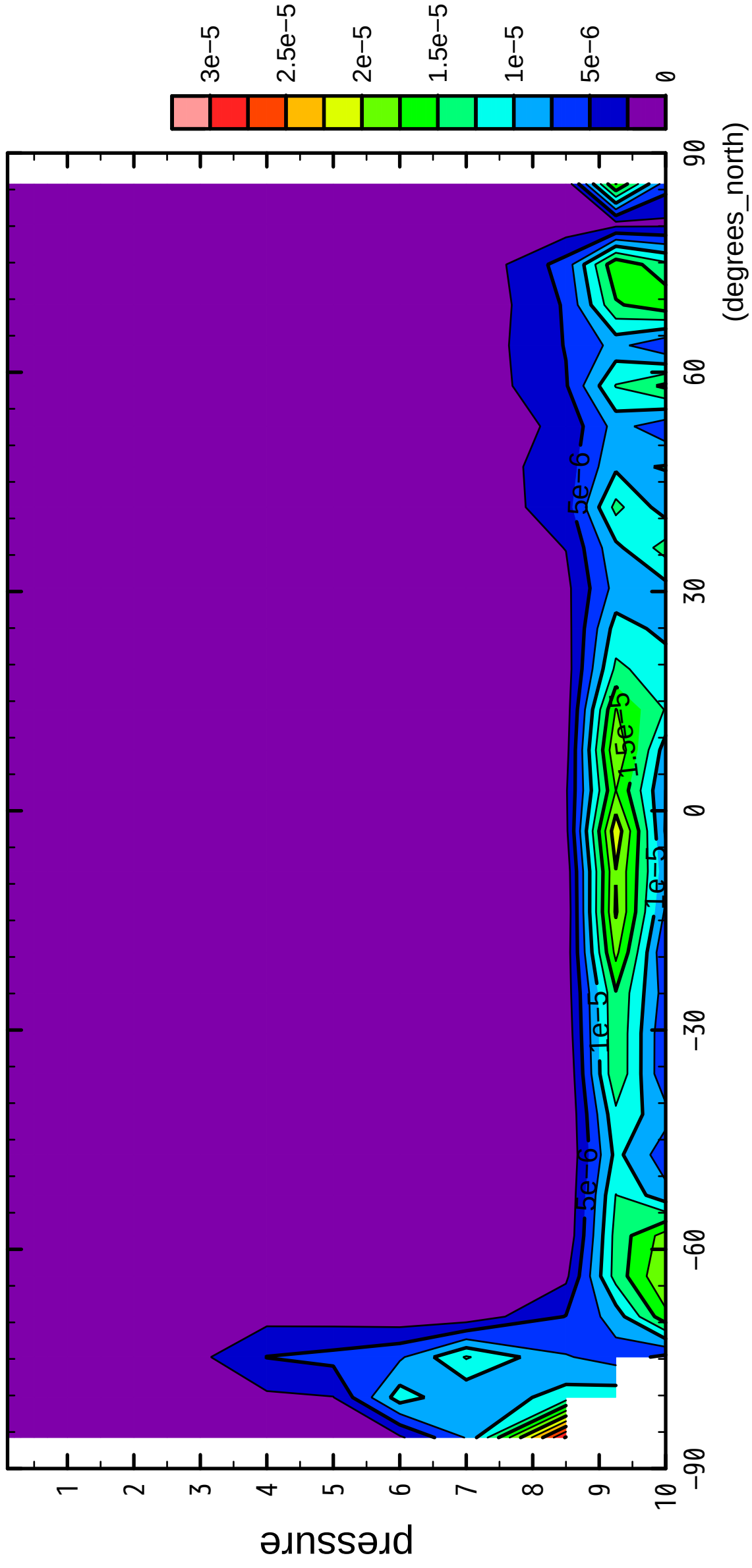
CONTOUR INTERVAL =  $2.500 \times 10^{-6}$



9/12

QH2OLiq

( $\times 10^4$  Pa)



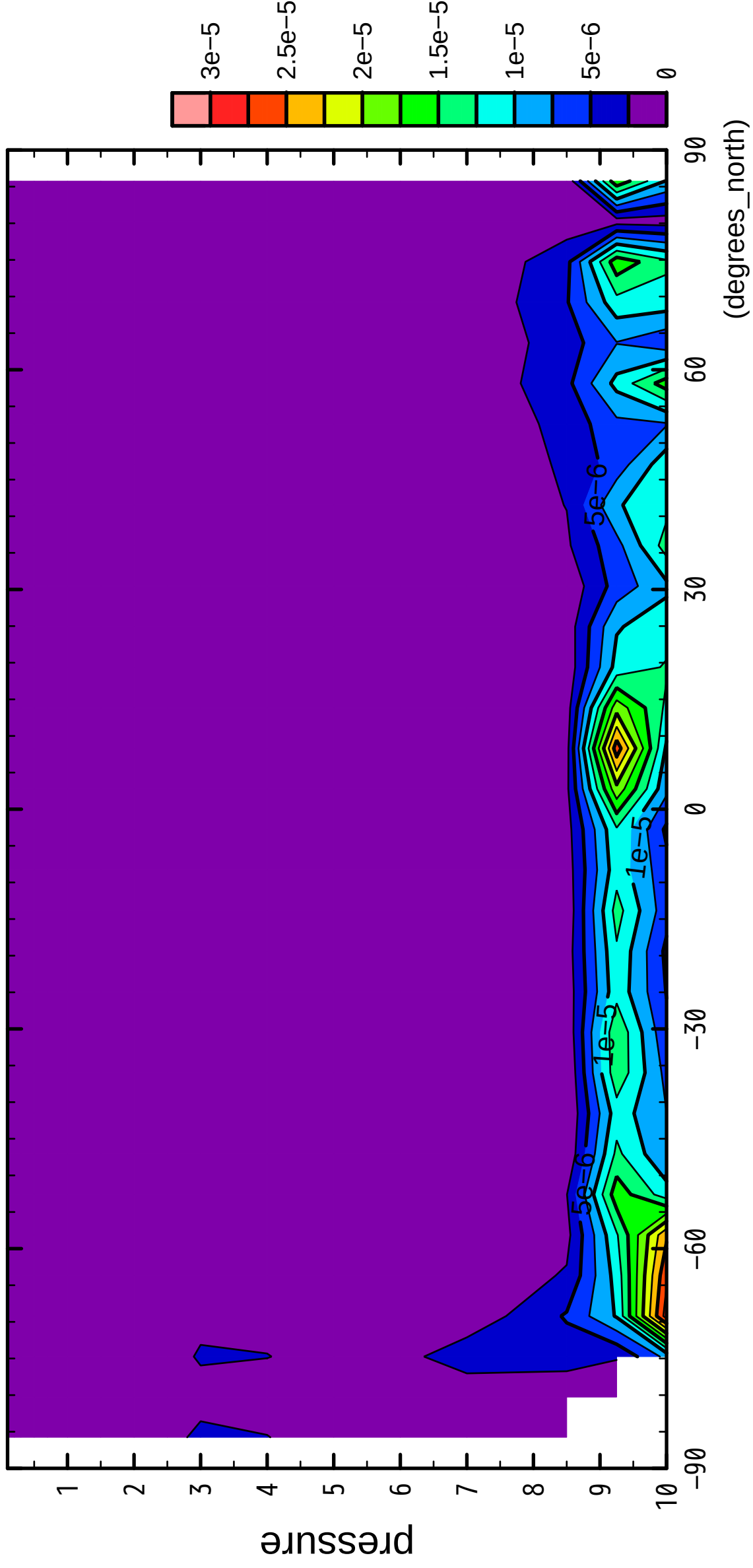
latitude

CONTOUR INTERVAL =  $2.500 \times 10^{-6}$

10/12

QH2OLiq

( $\times 10^4$  Pa)

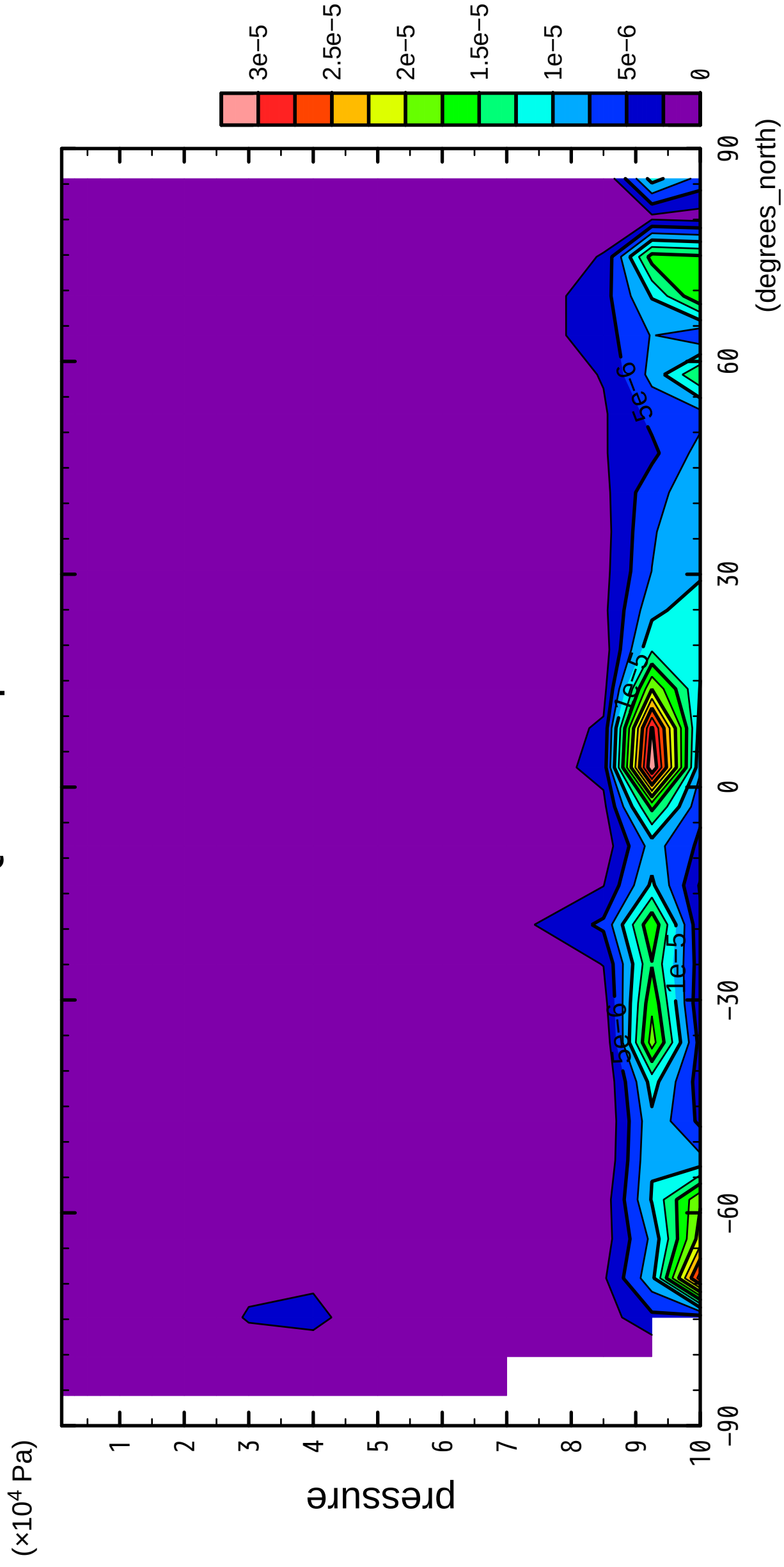


latitude

CONTOUR INTERVAL =  $2.500E-06$

11/12

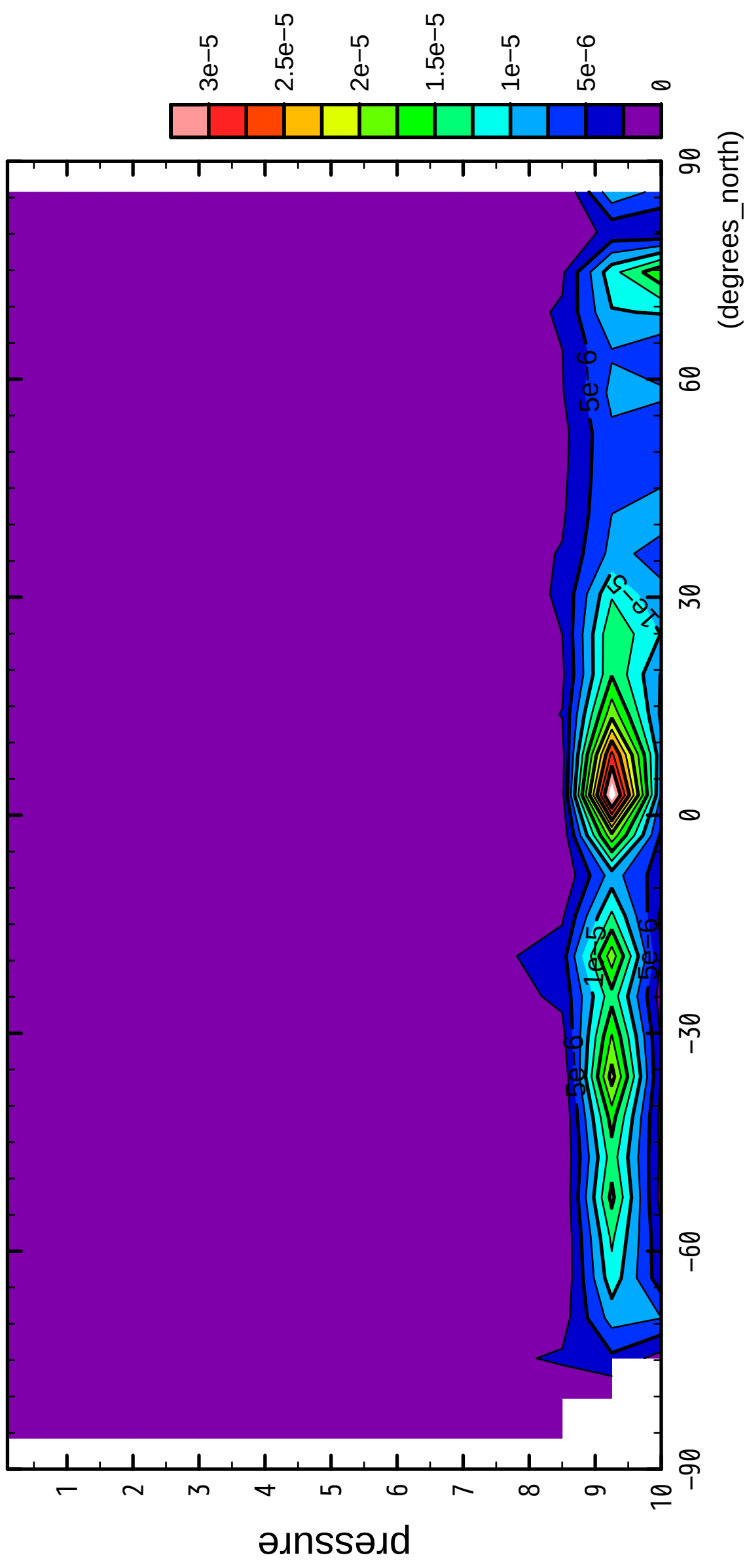
QH2OLiq



12/12

QH2OLiq

( $\times 10^4$  Pa)



latitude

CONTOUR INTERVAL =  $2.500E-06$