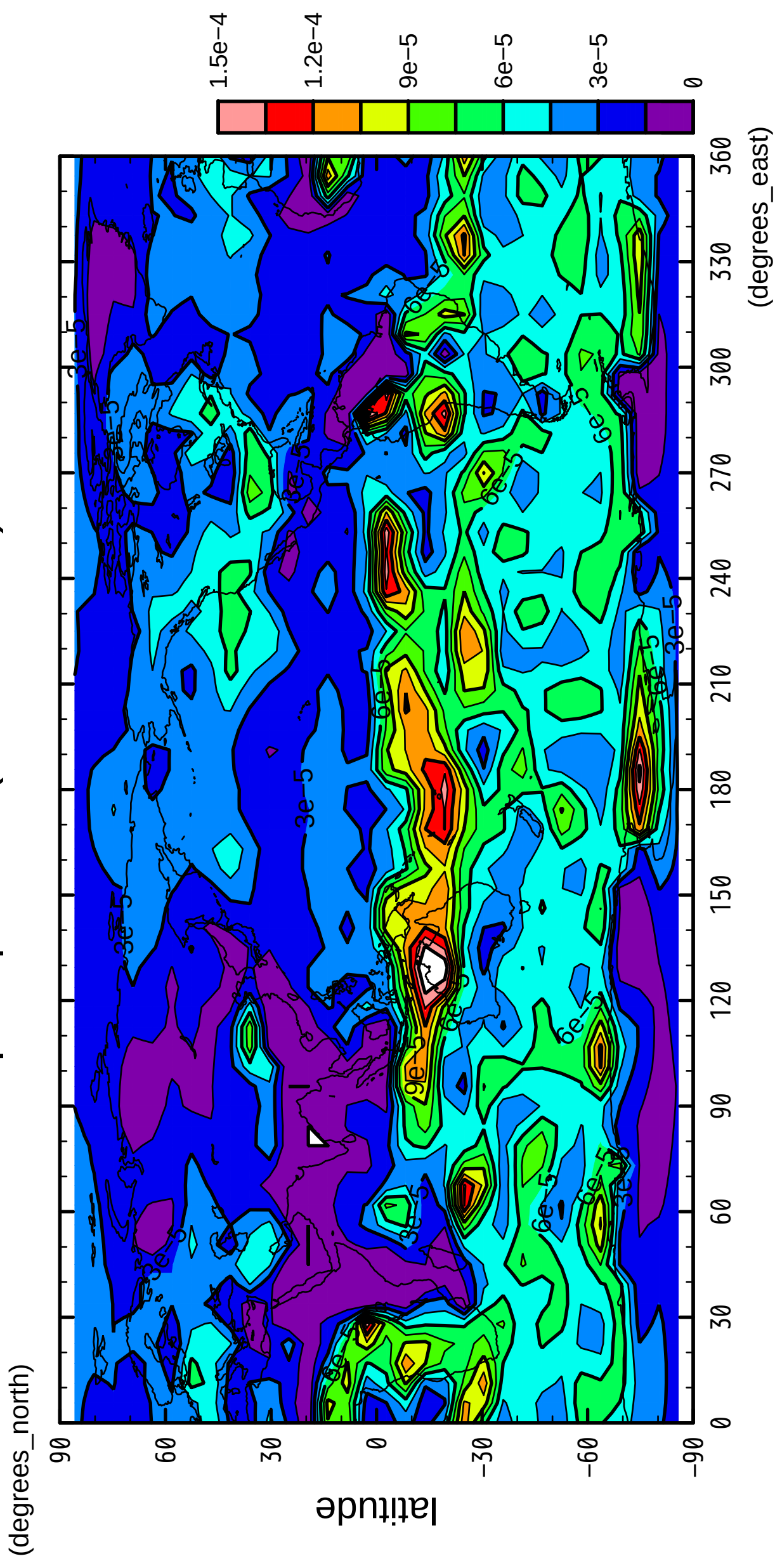


1/12

precipitation (rain + snow)

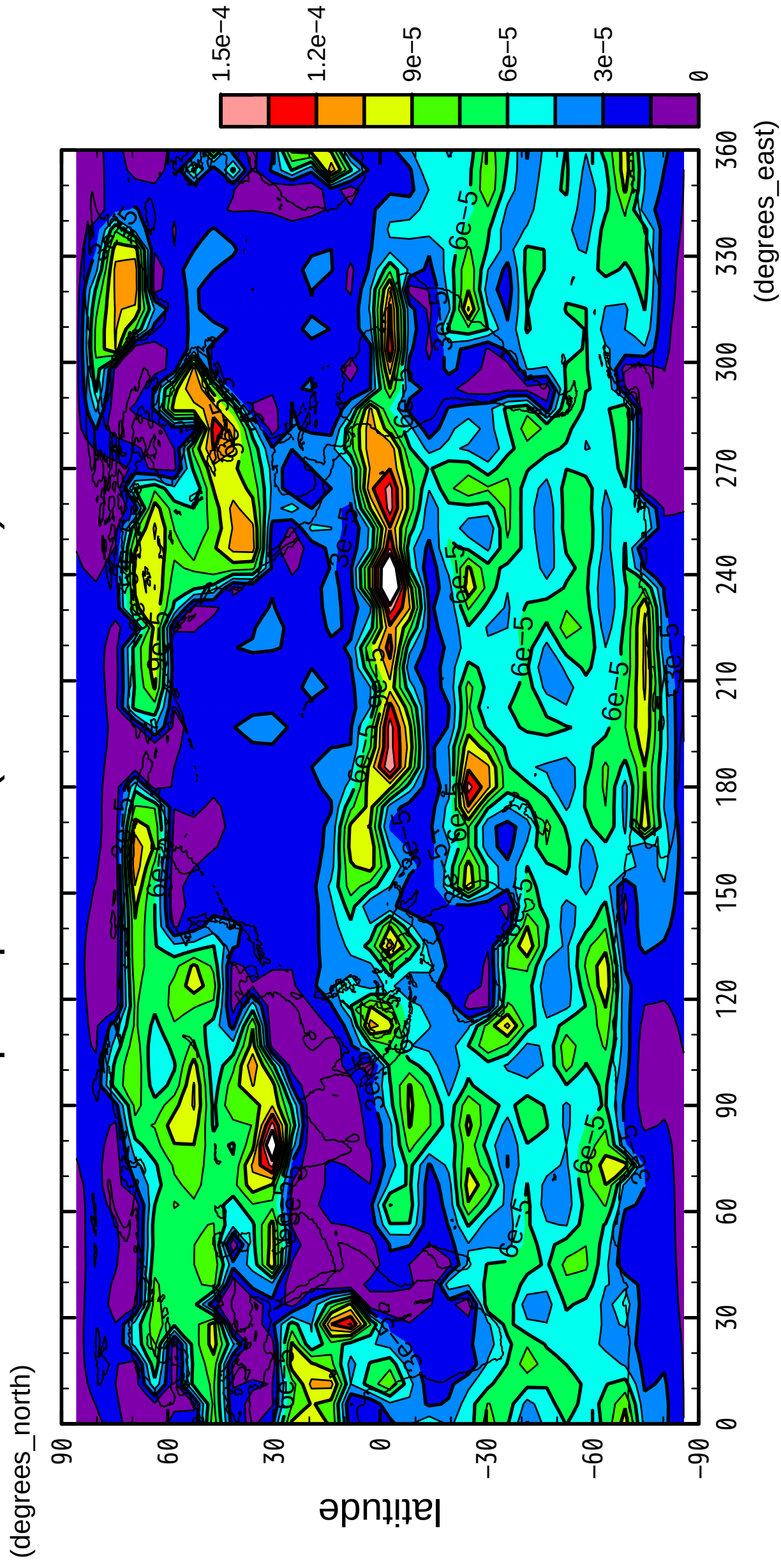


longitude

CONTOUR INTERVAL = 1.500E-05

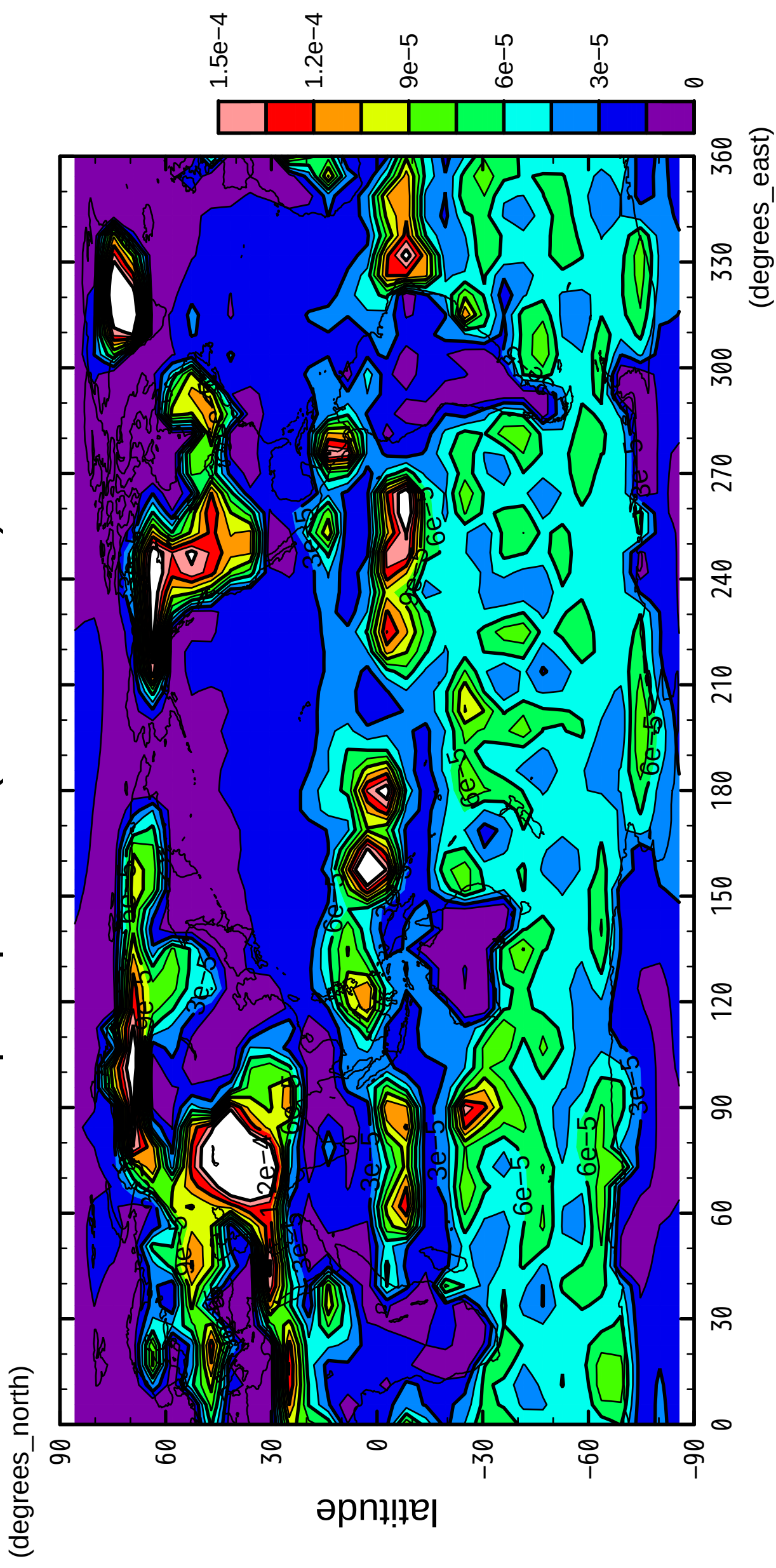
2/12

precipitation (rain + snow)



3/12

precipitation (rain + snow)

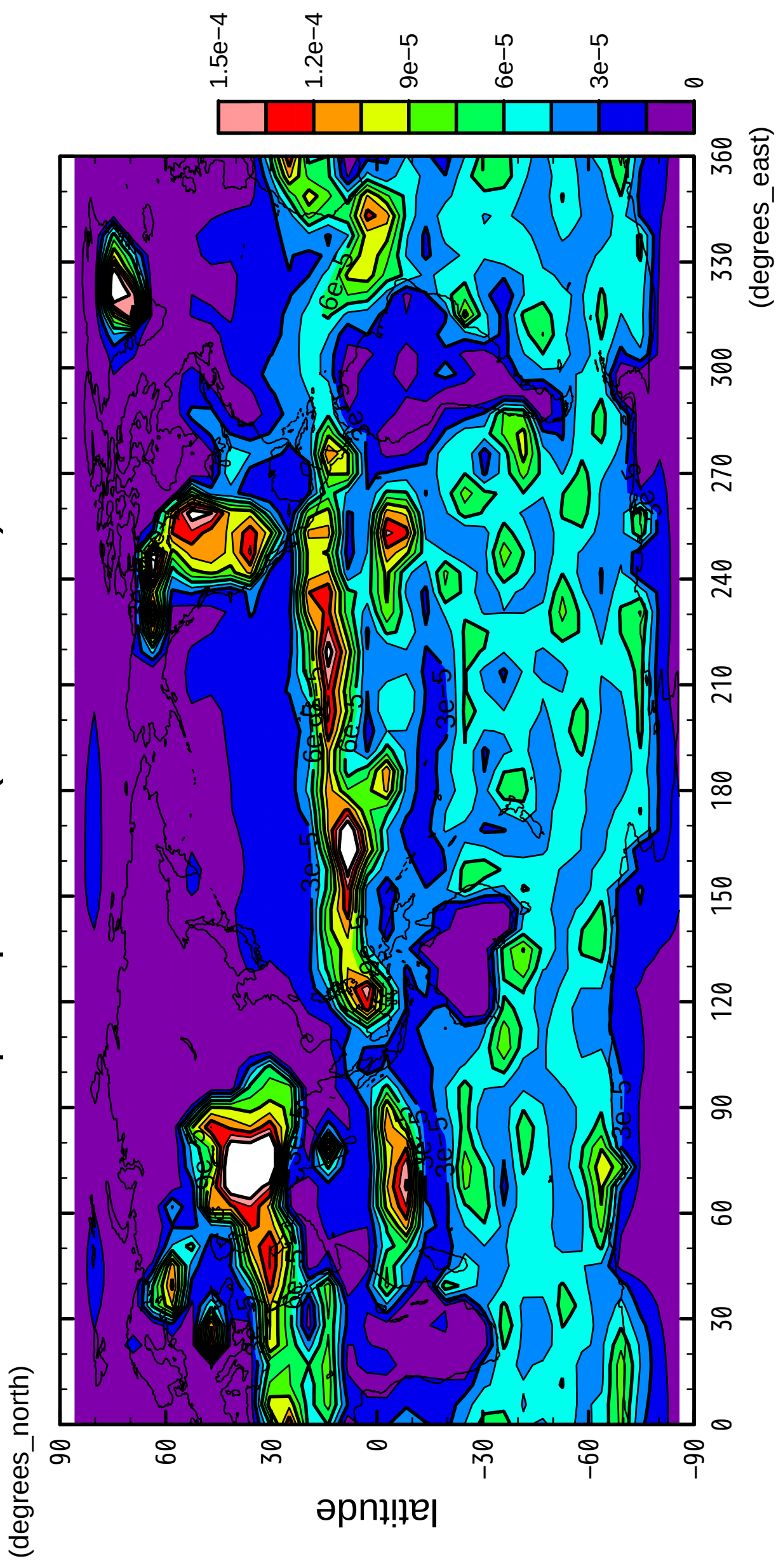


longitude

CONTOUR INTERVAL = 1.500E-05

4/12

precipitation (rain + snow)

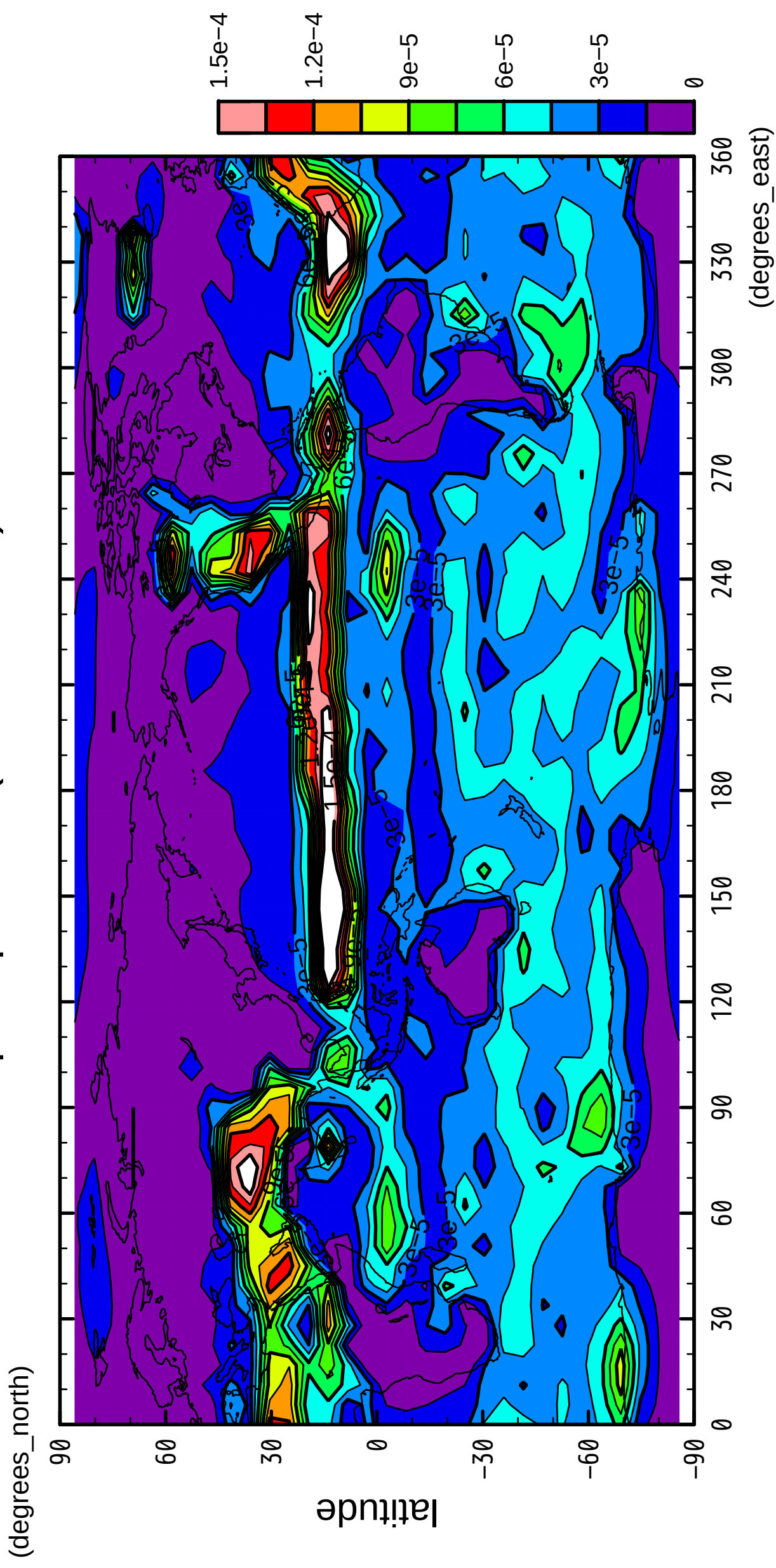


longitude

CONTOUR INTERVAL = 1.500E-05

5/12

precipitation (rain + snow)

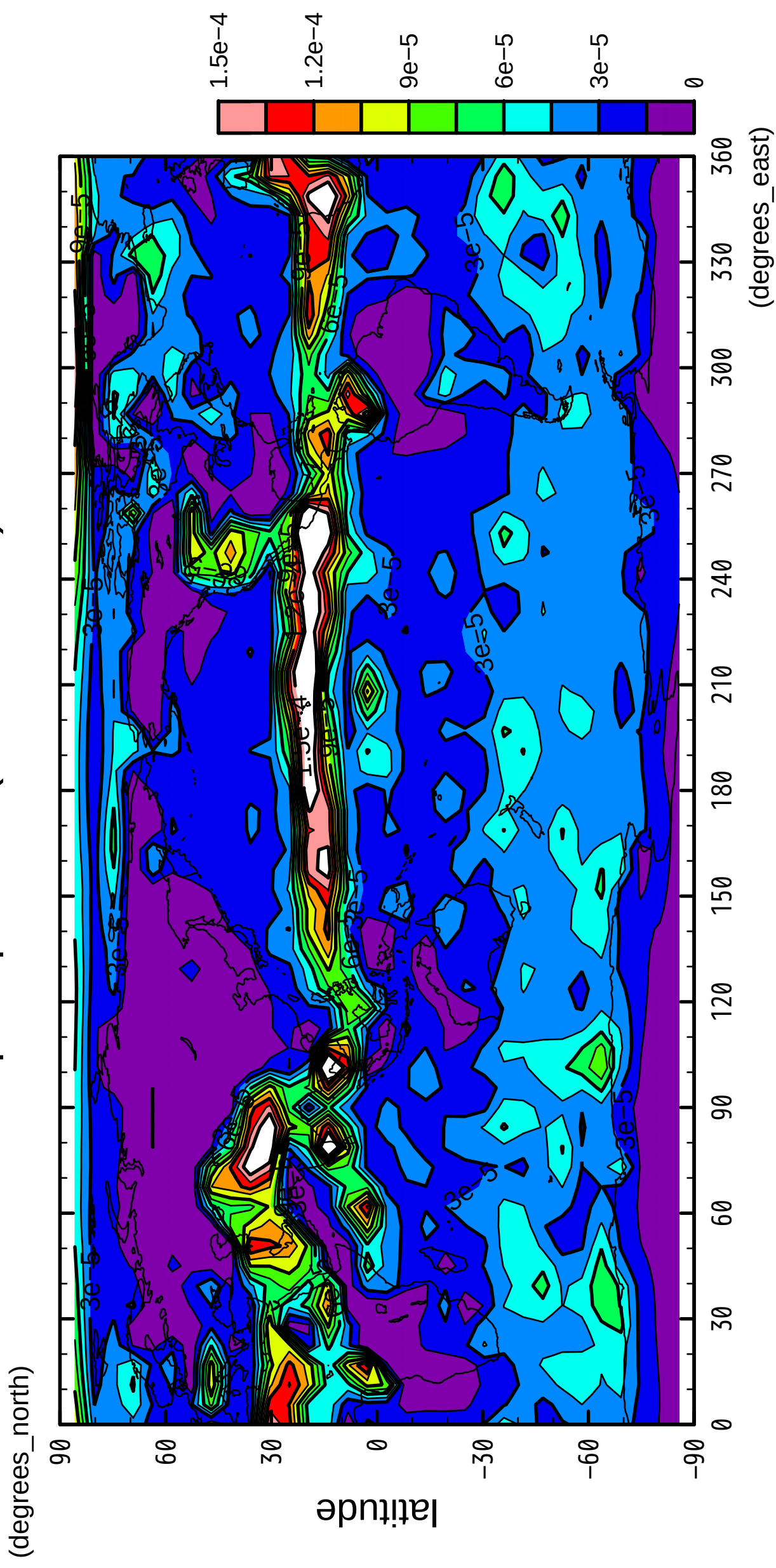


longitude

CONTOUR INTERVAL = 1.500E-05

6/12

precipitation (rain + snow)

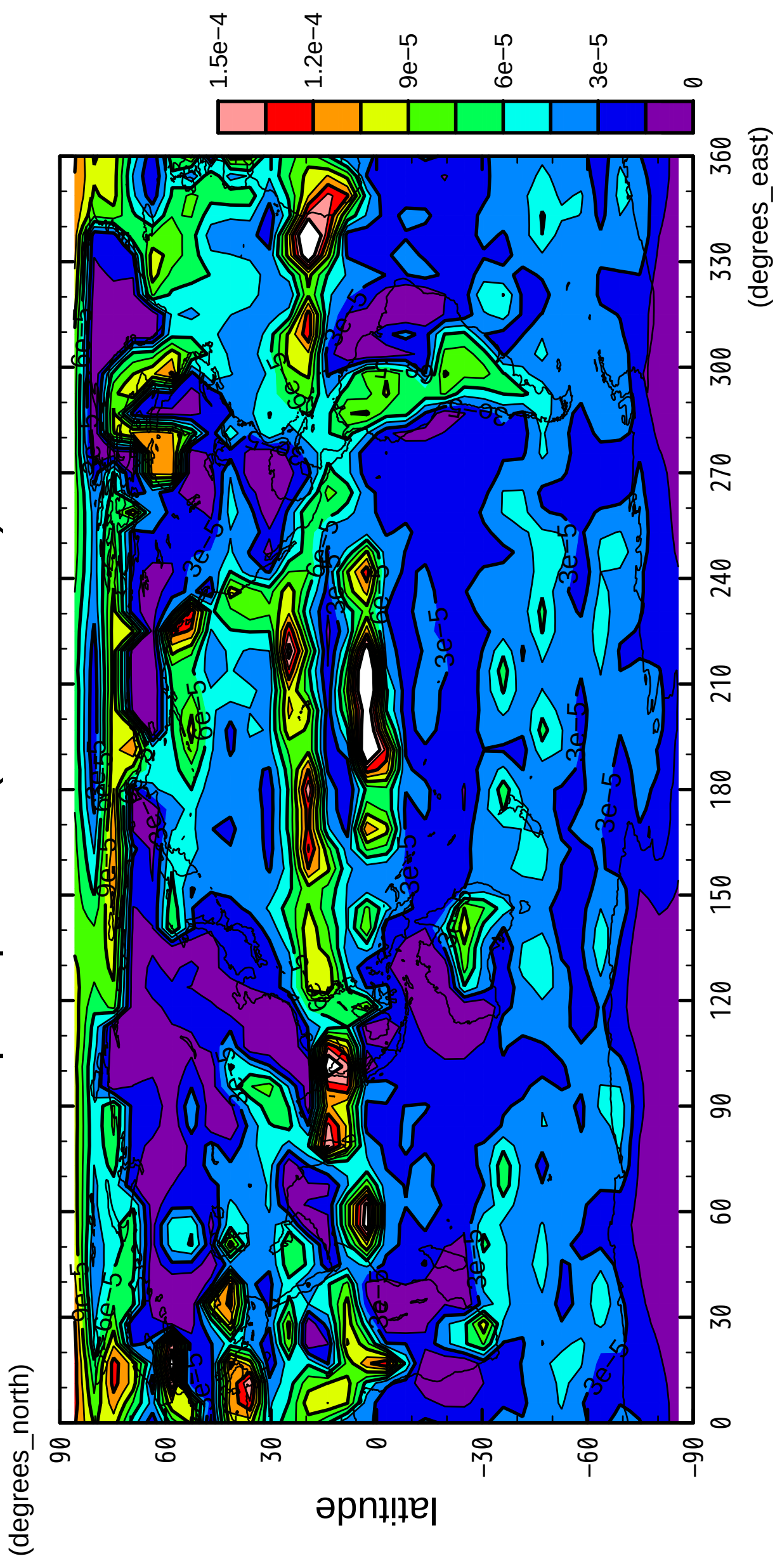


longitude

CONTOUR INTERVAL = 1.500×10^{-5}

7/12

precipitation (rain + snow)

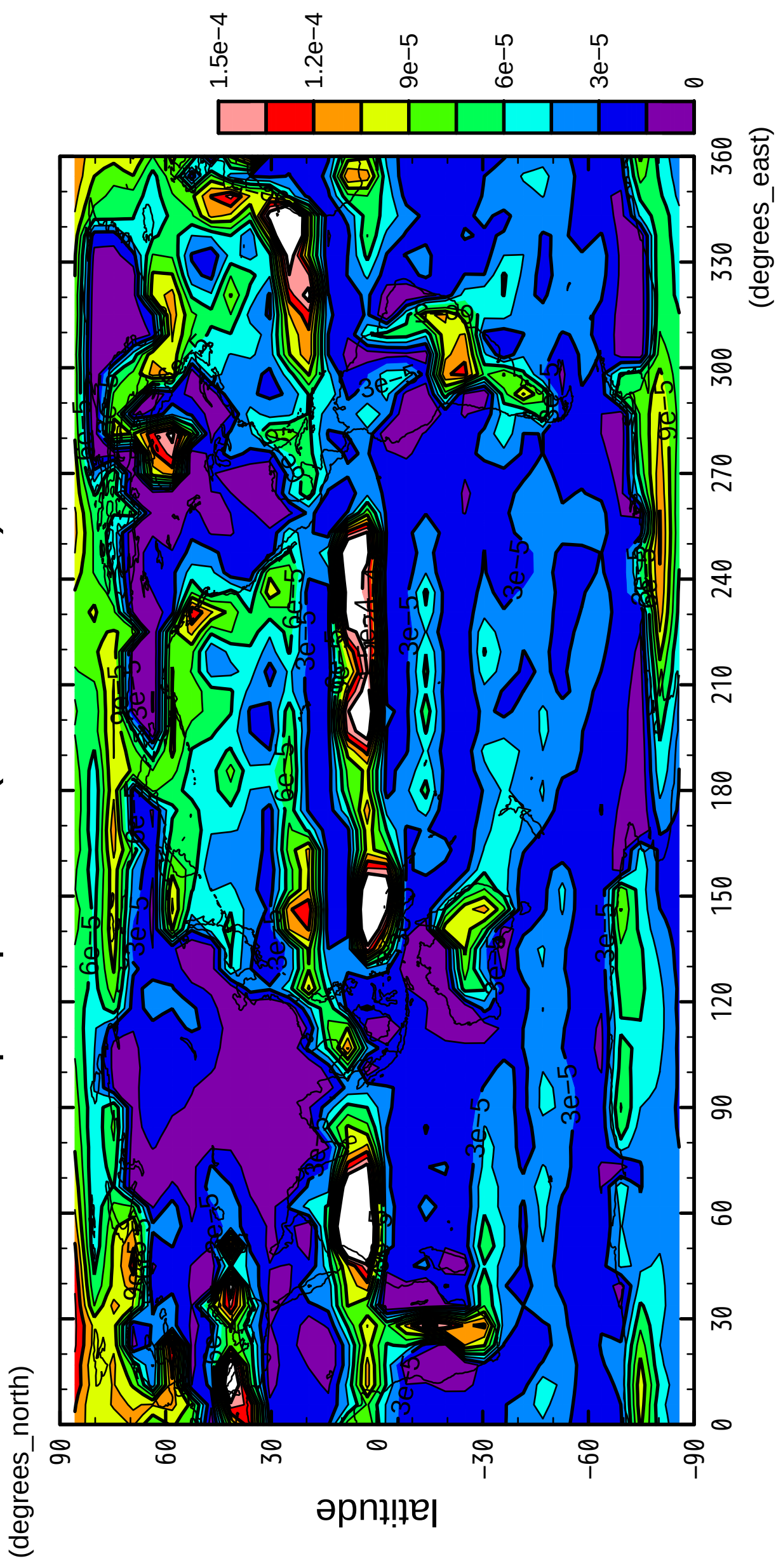


longitude

CONTOUR INTERVAL = 1.500E-05

8/12

precipitation (rain + snow)

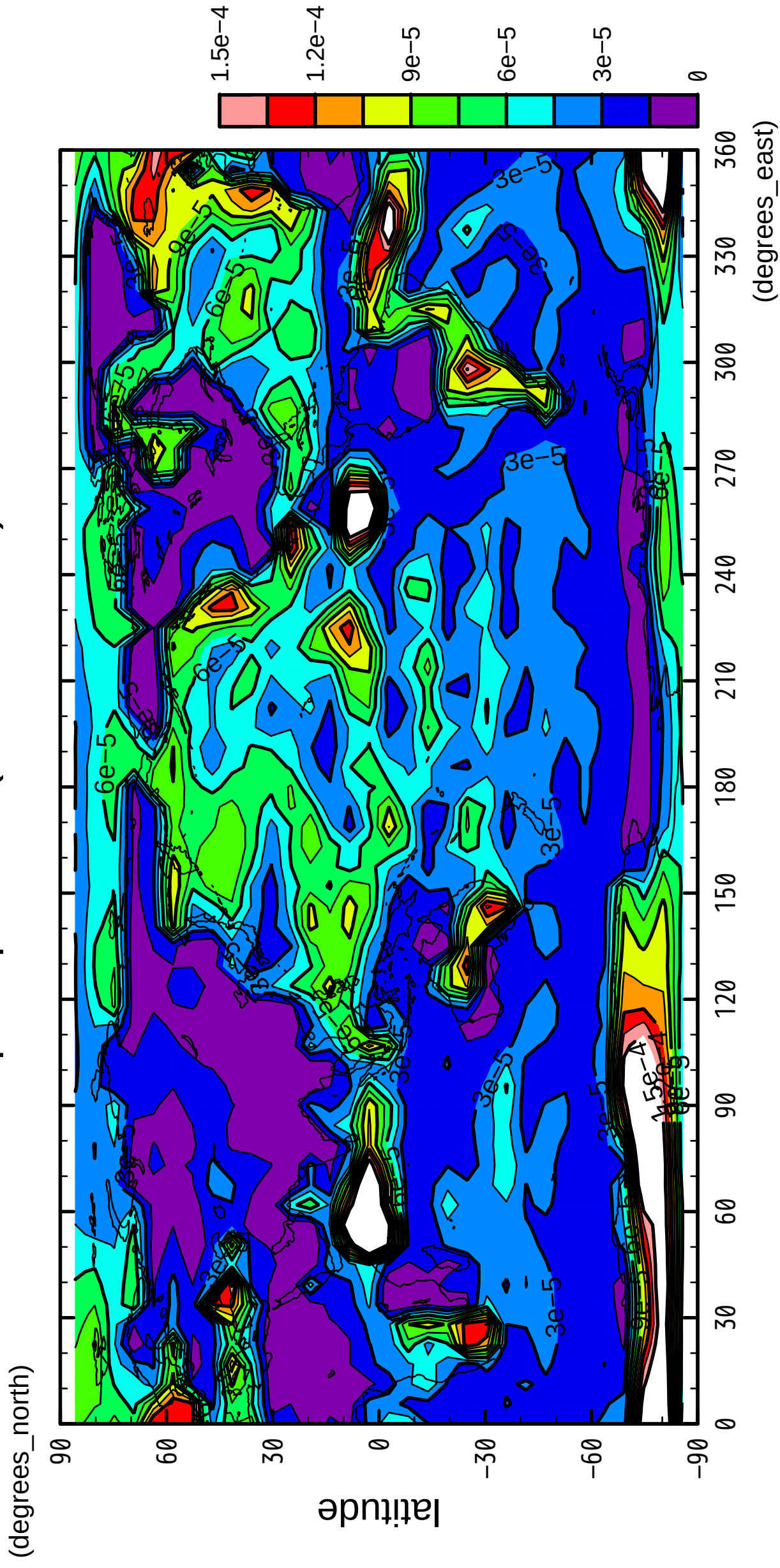


longitude

CONTOUR INTERVAL = 1.500E-05

9/12

precipitation (rain + snow)

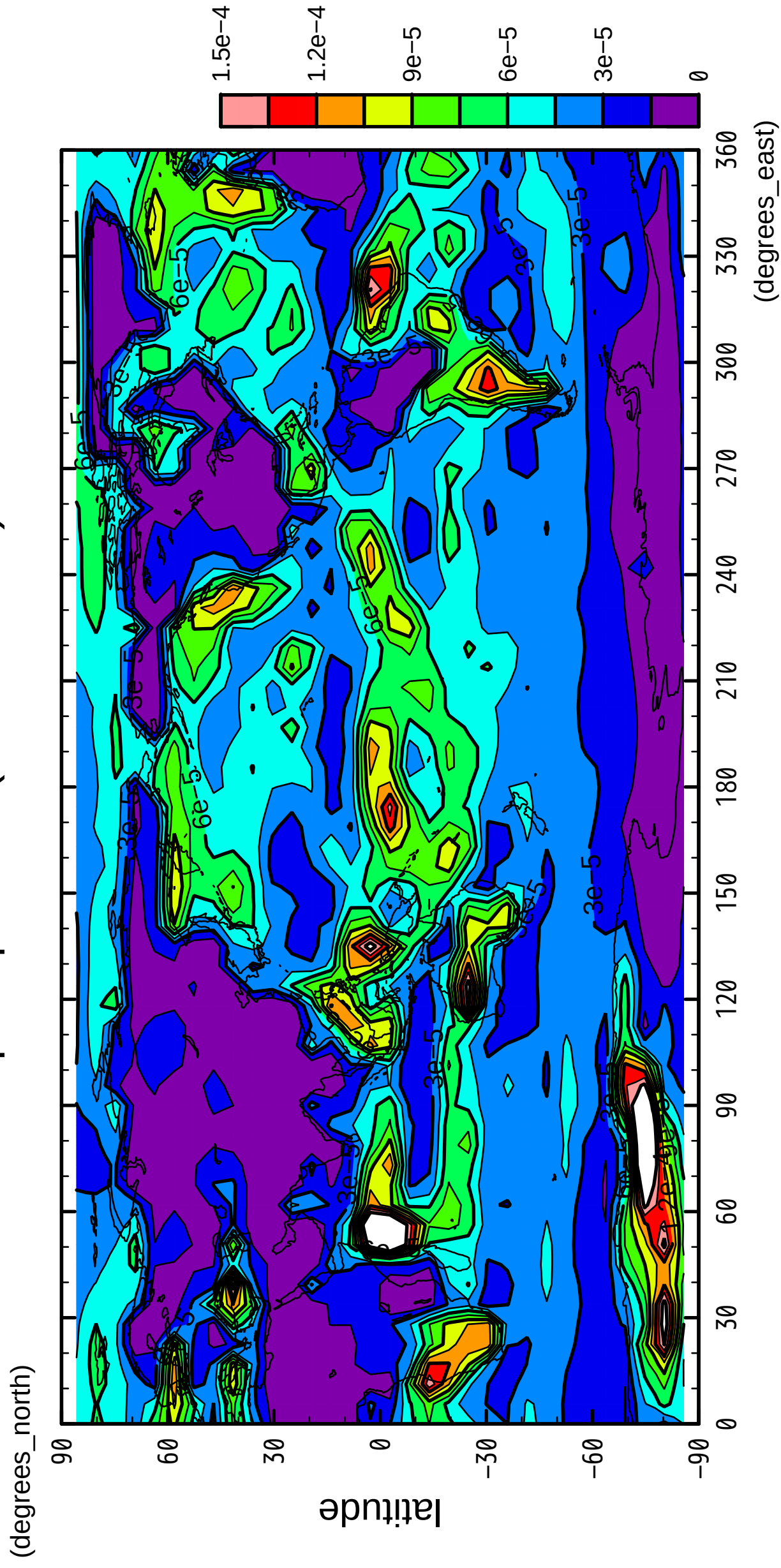


longitude

CONTOUR INTERVAL = 1.500E-05

10/12

precipitation (rain + snow)

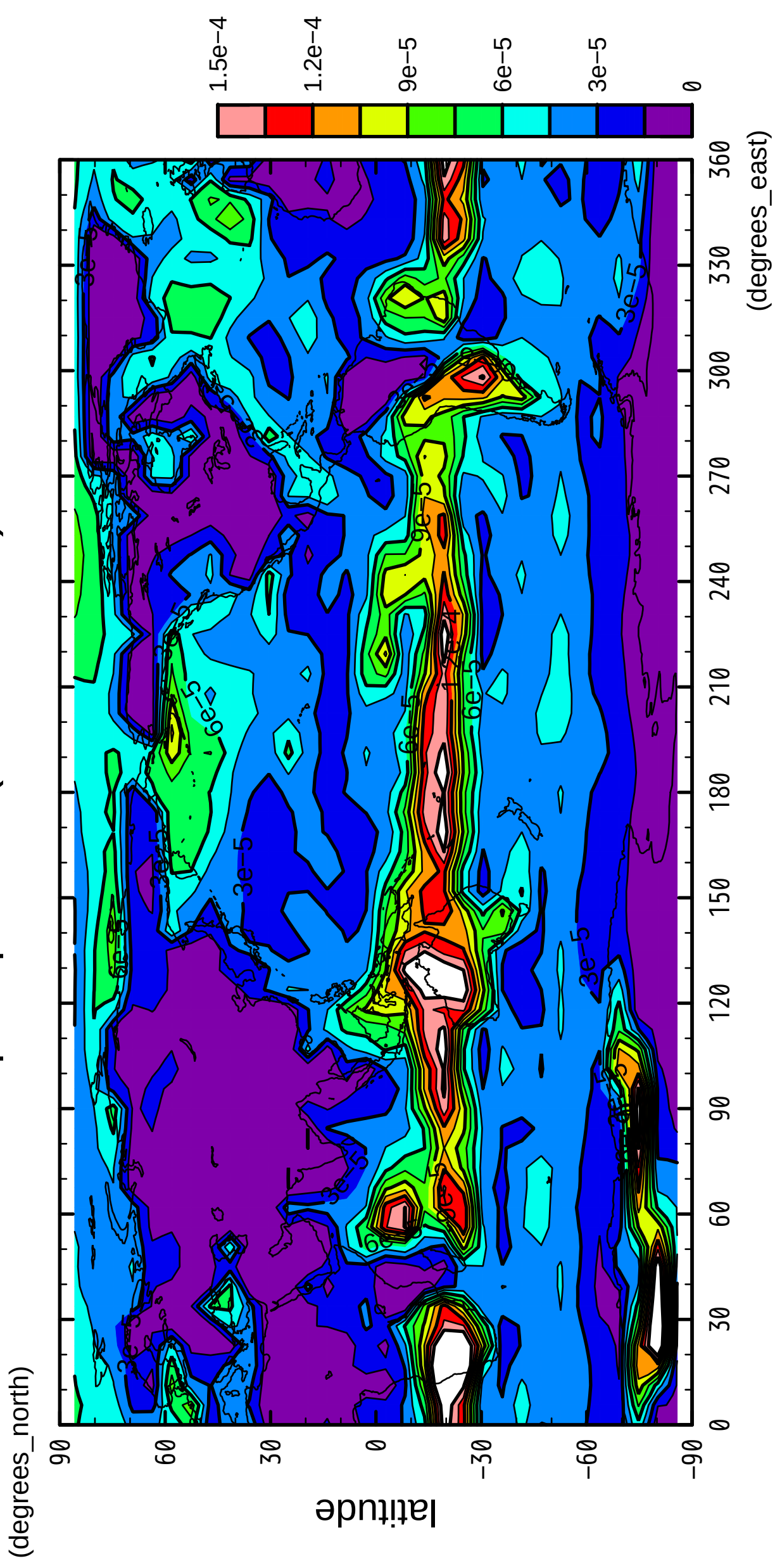


longitude

CONTOUR INTERVAL = 1.500E-05

11/12

precipitation (rain + snow)

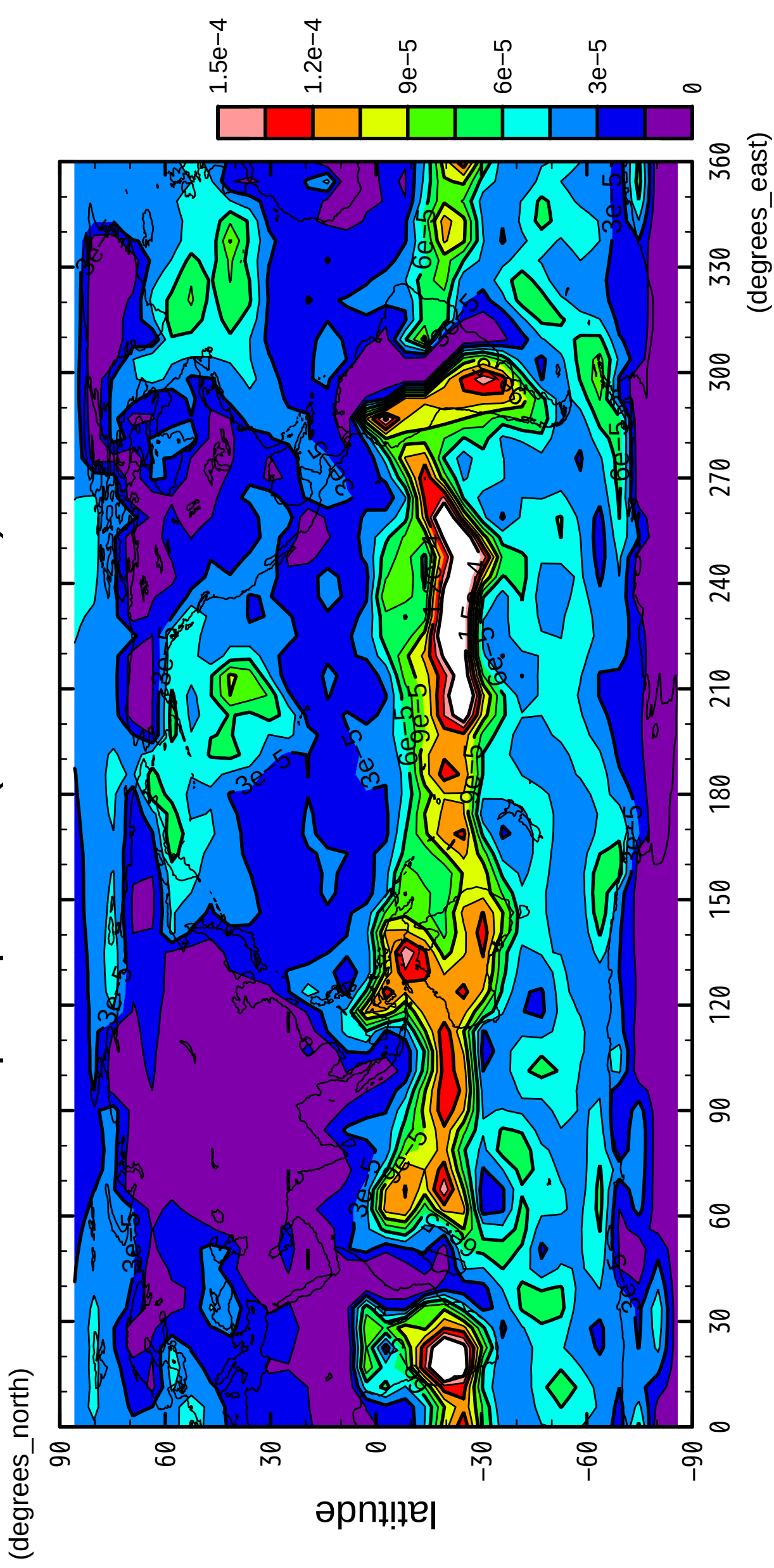


longitude

CONTOUR INTERVAL = 1.500E-05

12/12

precipitation (rain + snow)



longitude

CONTOUR INTERVAL = 1.500E-05