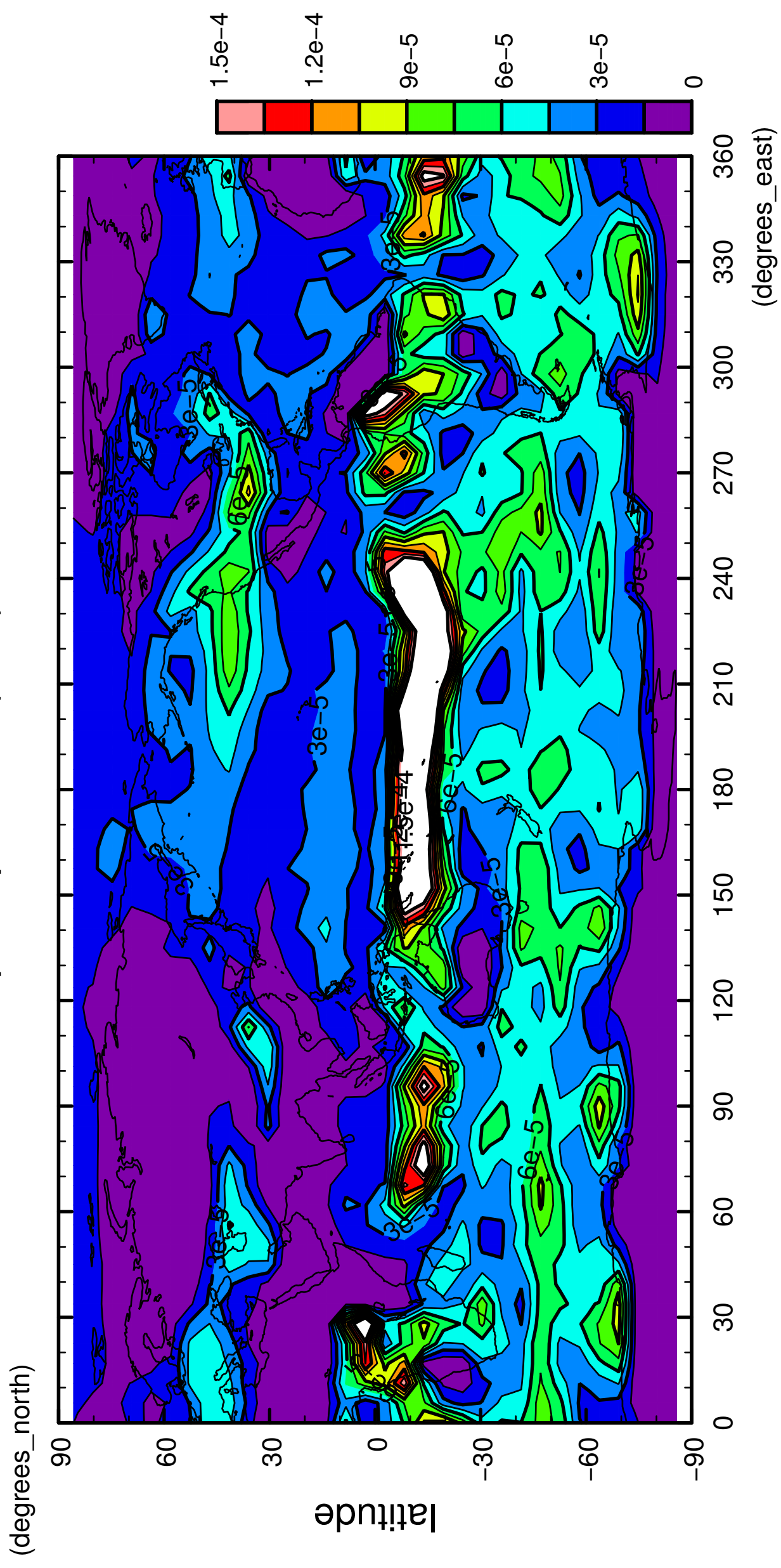


1/12

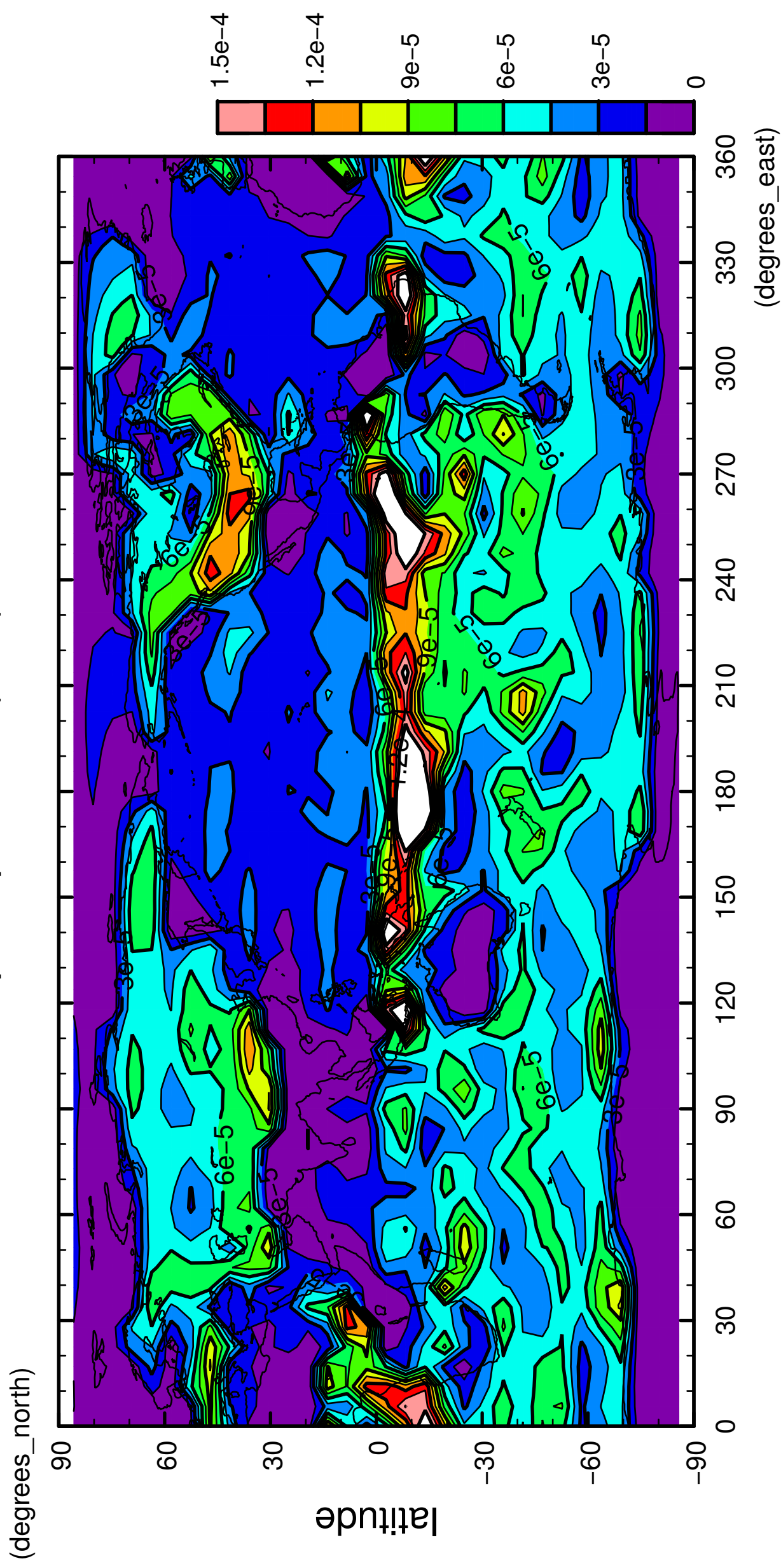
# precipitation (rain)



longitude  
CONTOUR INTERVAL = 1.500E-05

2/12

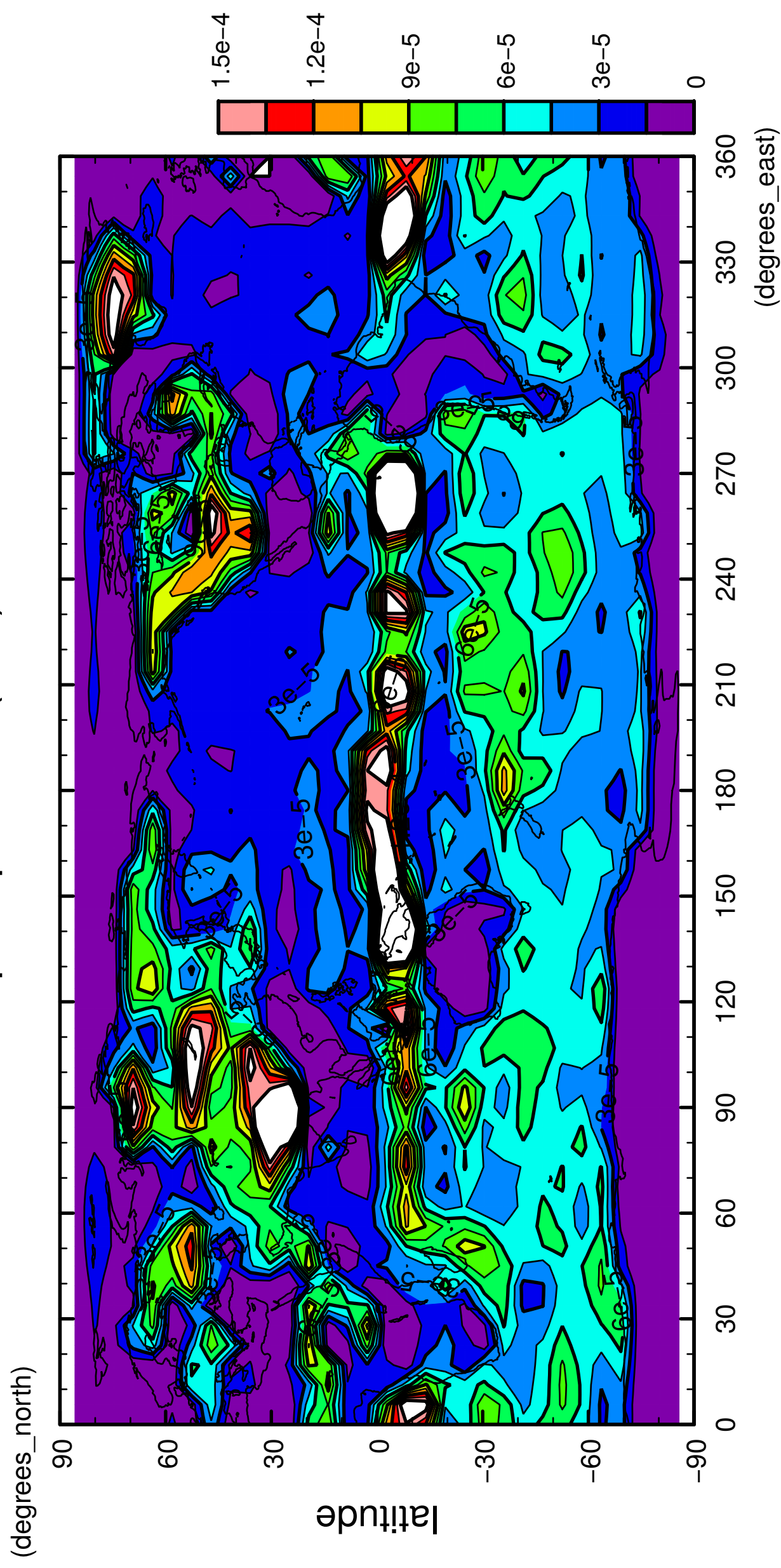
# precipitation (rain)



longitude  
CONTOUR INTERVAL = 1.500E-05

3/12

# precipitation (rain)

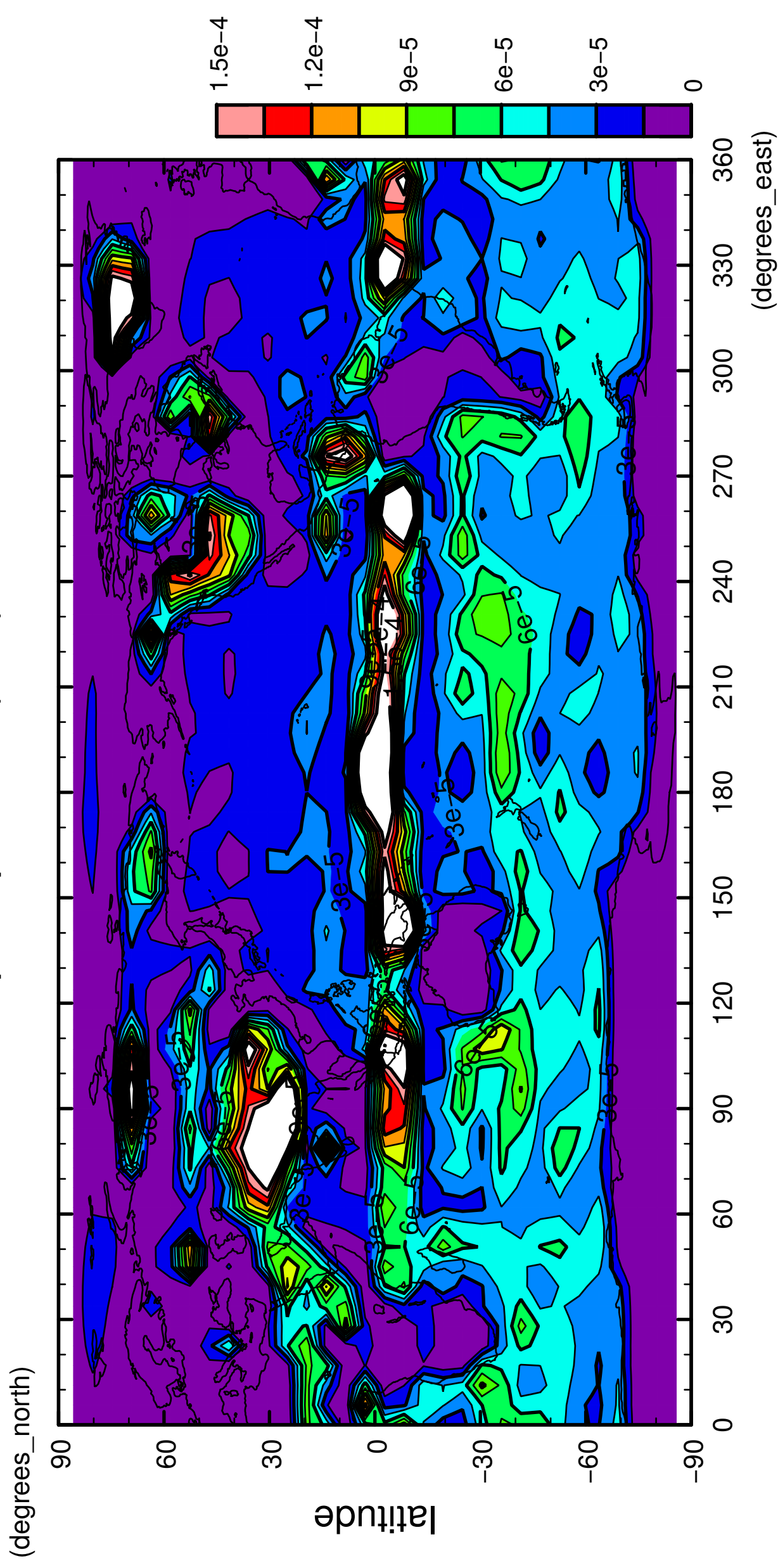


longitude  
CONTOUR INTERVAL = 1.500E-05



4/12

# precipitation (rain)

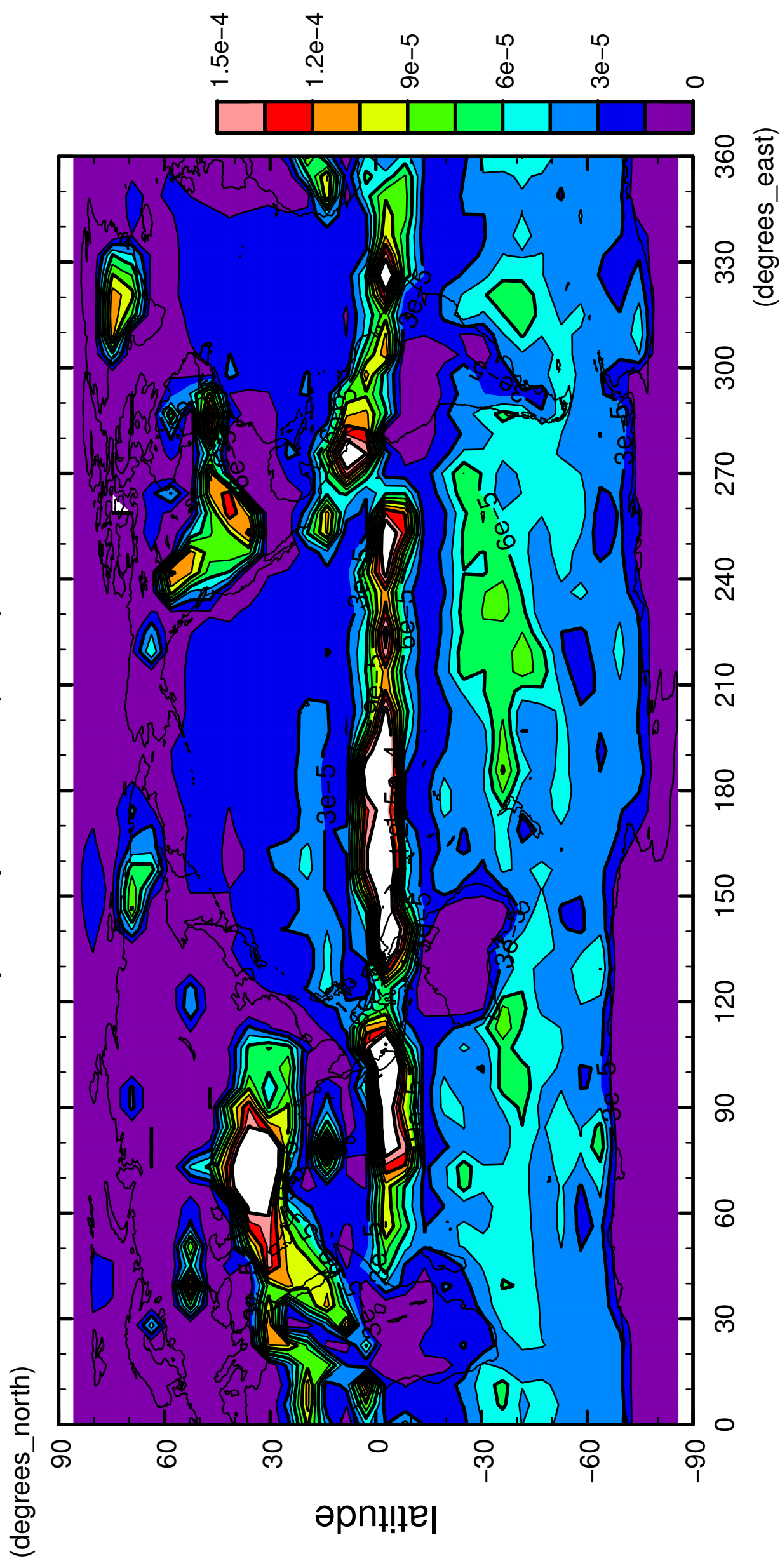


longitude

CONTOUR INTERVAL = 1.500E-05

5/12

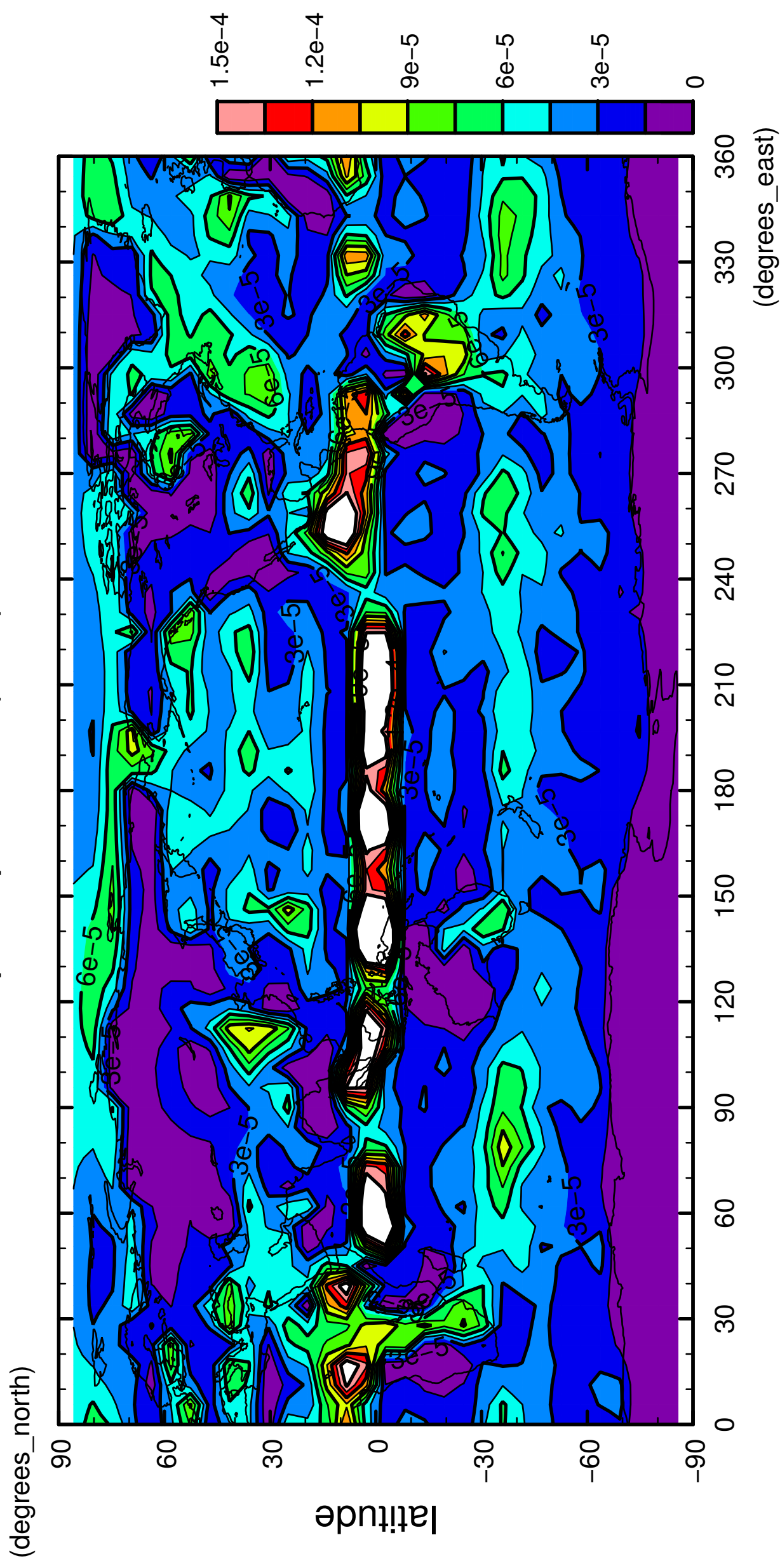
# precipitation (rain)





7/12

# precipitation (rain)



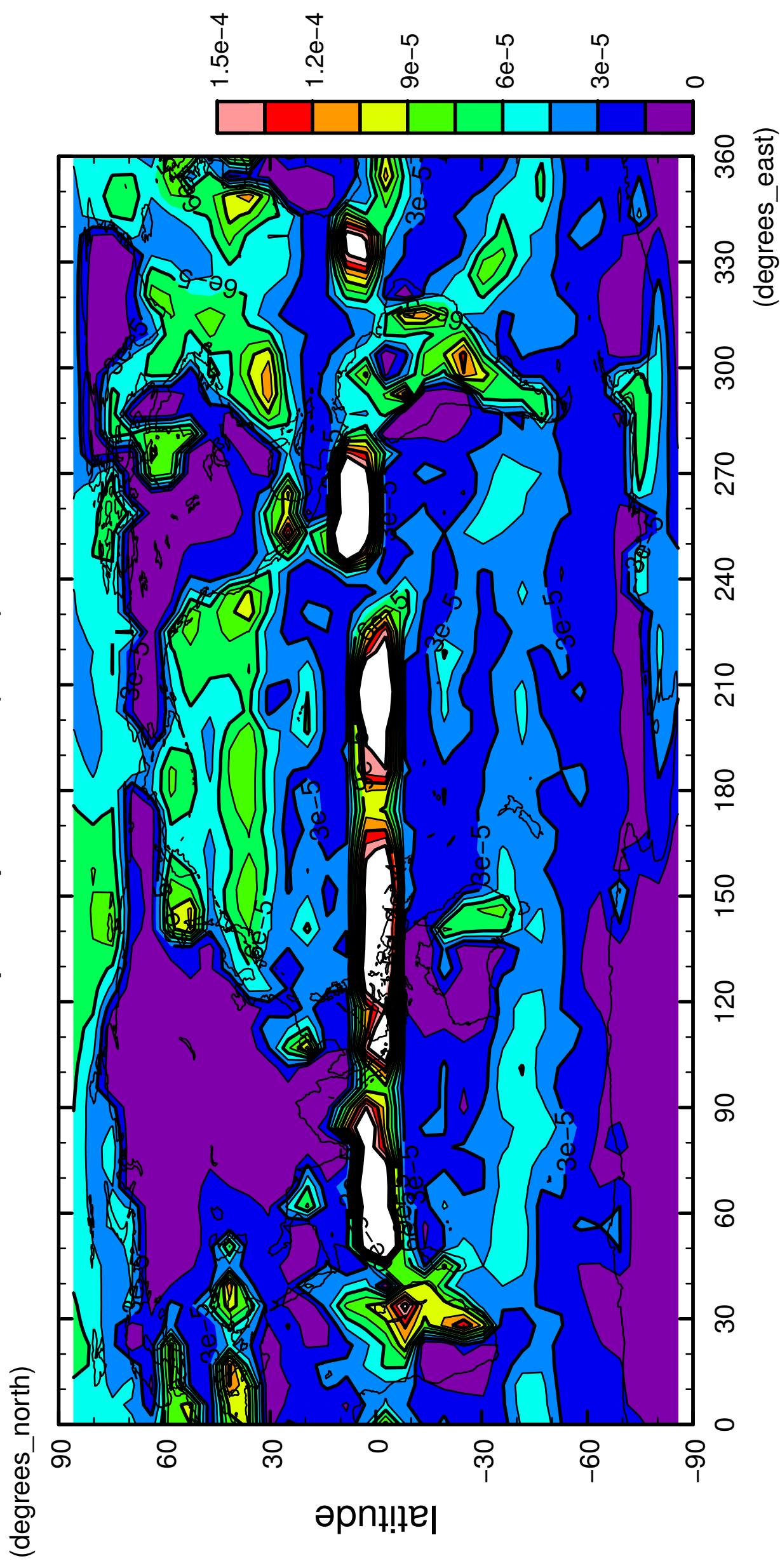
longitude

CONTOUR INTERVAL = 1.500E-05



8/12

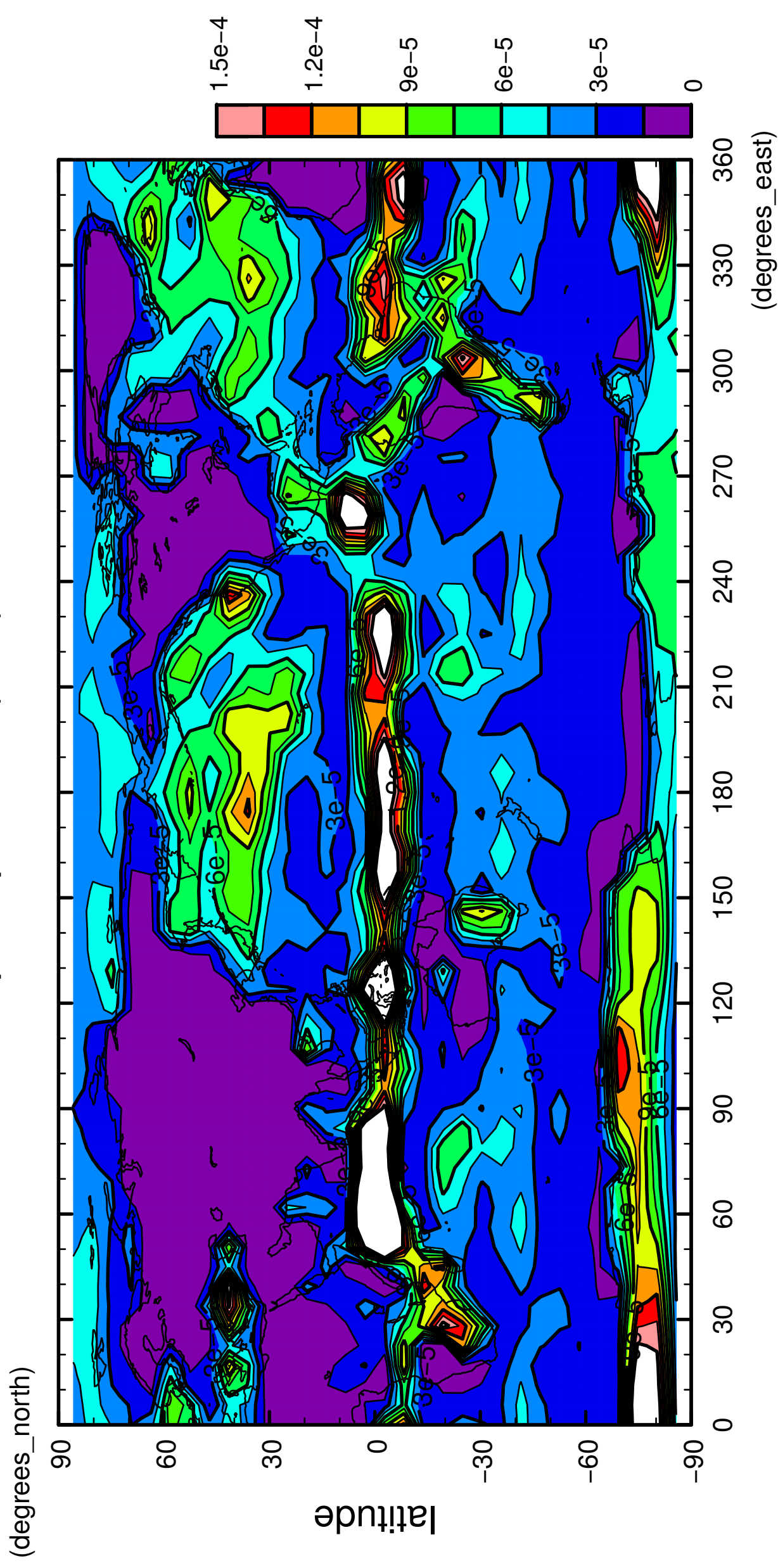
# precipitation (rain)





9/12

precipitation (rain)

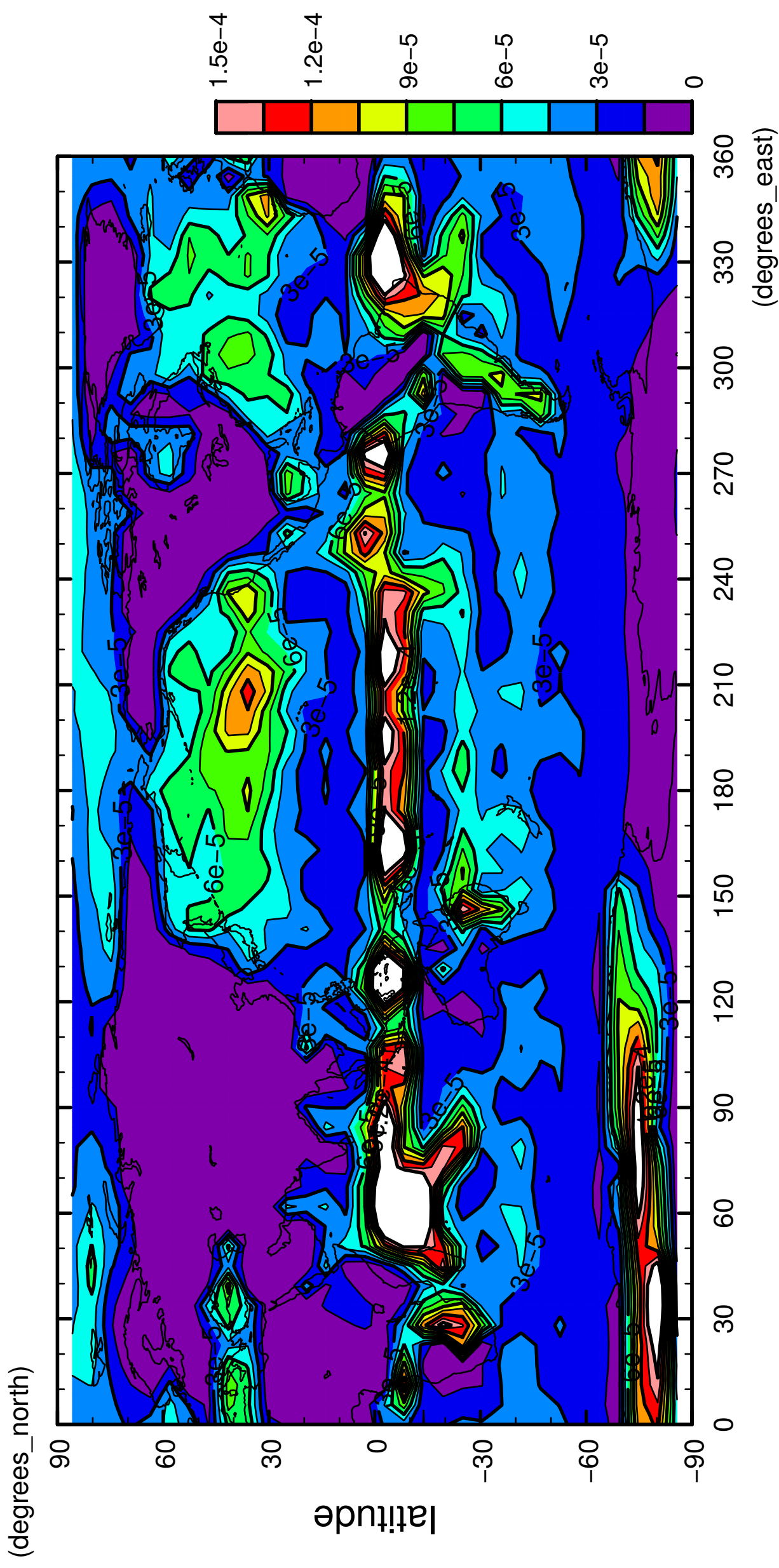


longitude

CONTOUR INTERVAL = 1.500E-05

10/12

precipitation (rain)

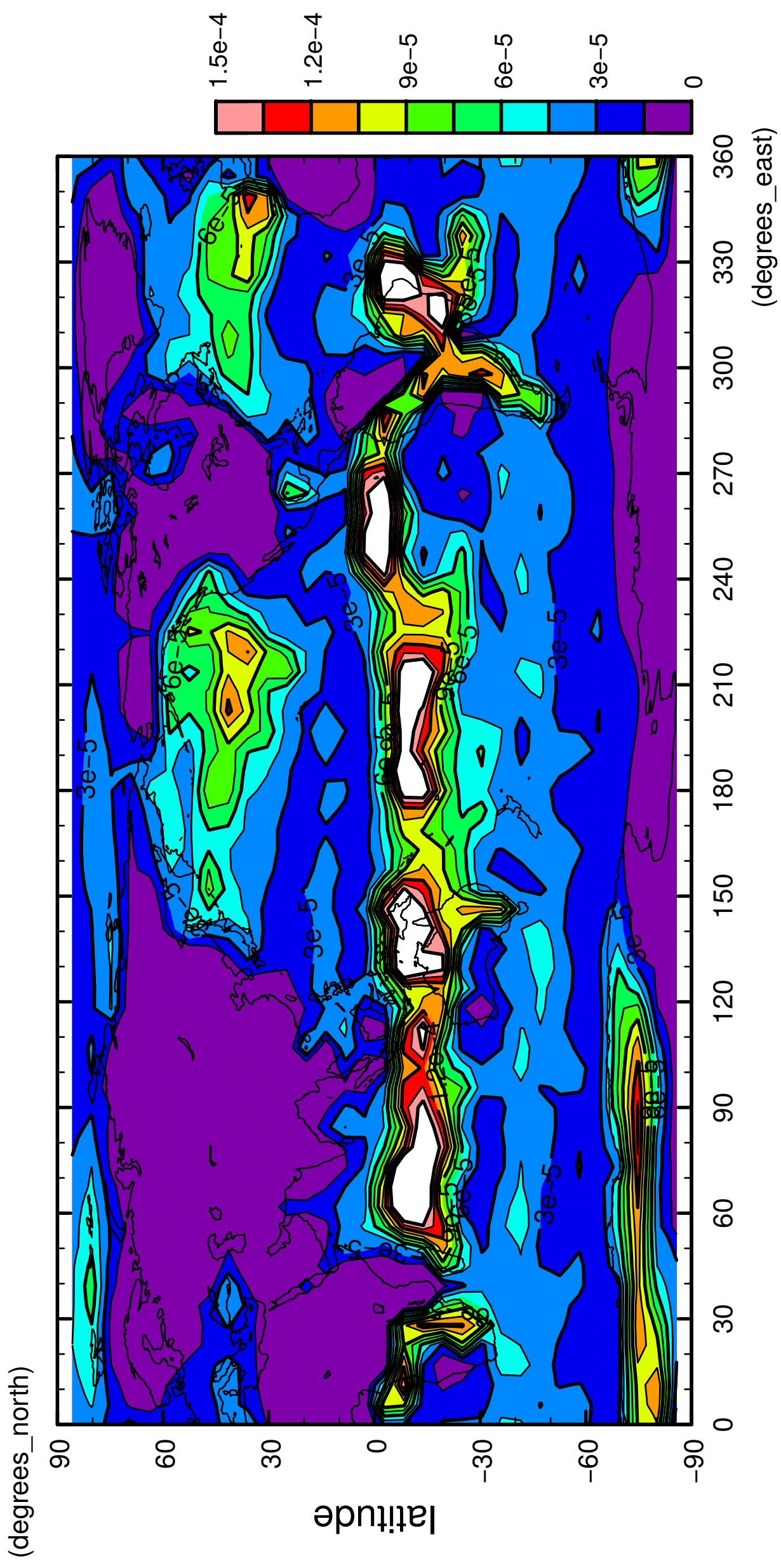


longitude

CONTOUR INTERVAL = 1.500E-05

11/12

precipitation (rain)



longitude

CONTOUR INTERVAL = 1.500E-05



