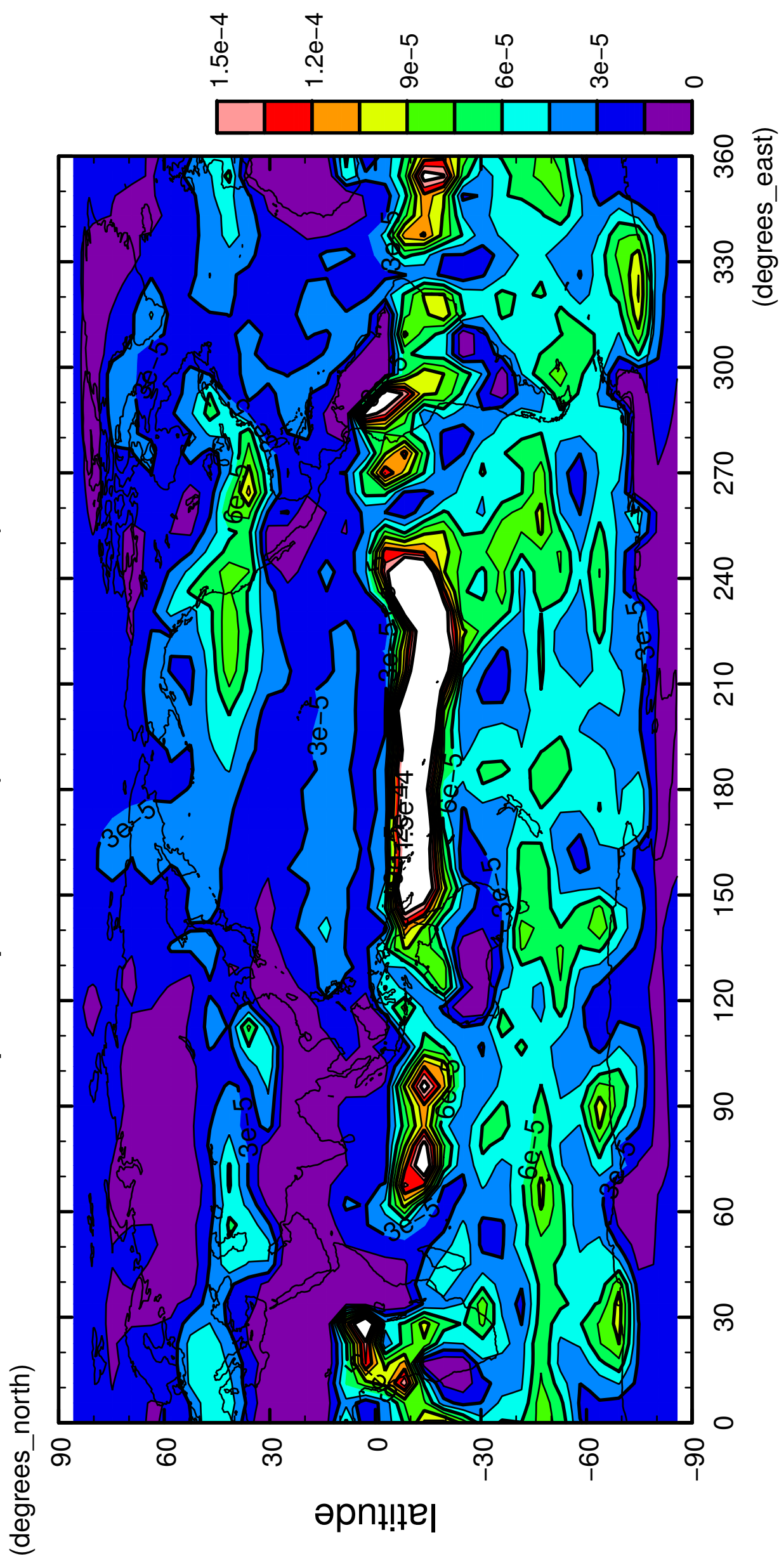


1/12

precipitation (rain + snow)

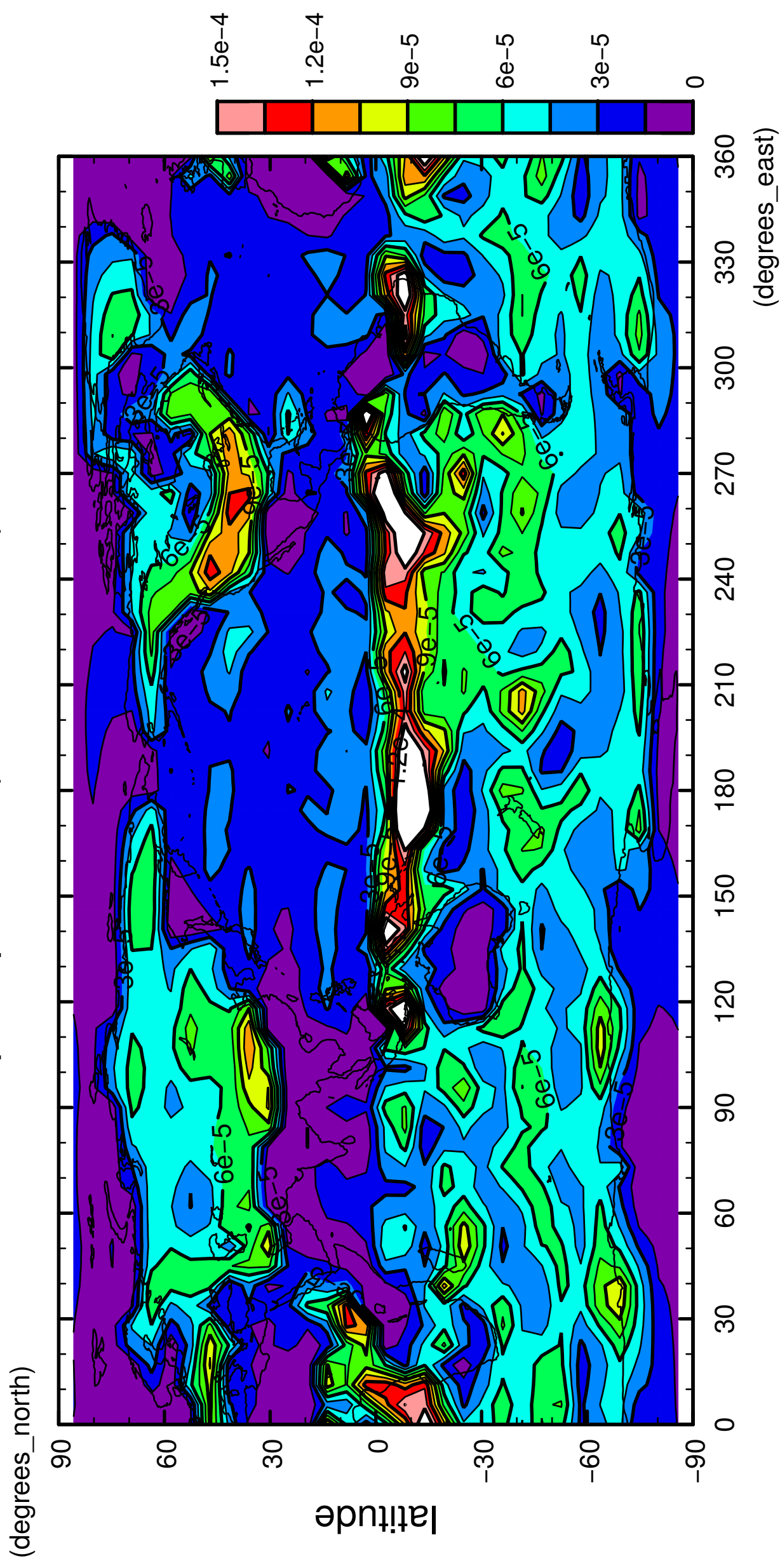


longitude

CONTOUR INTERVAL = 1.500E-05

2/12

precipitation (rain + snow)

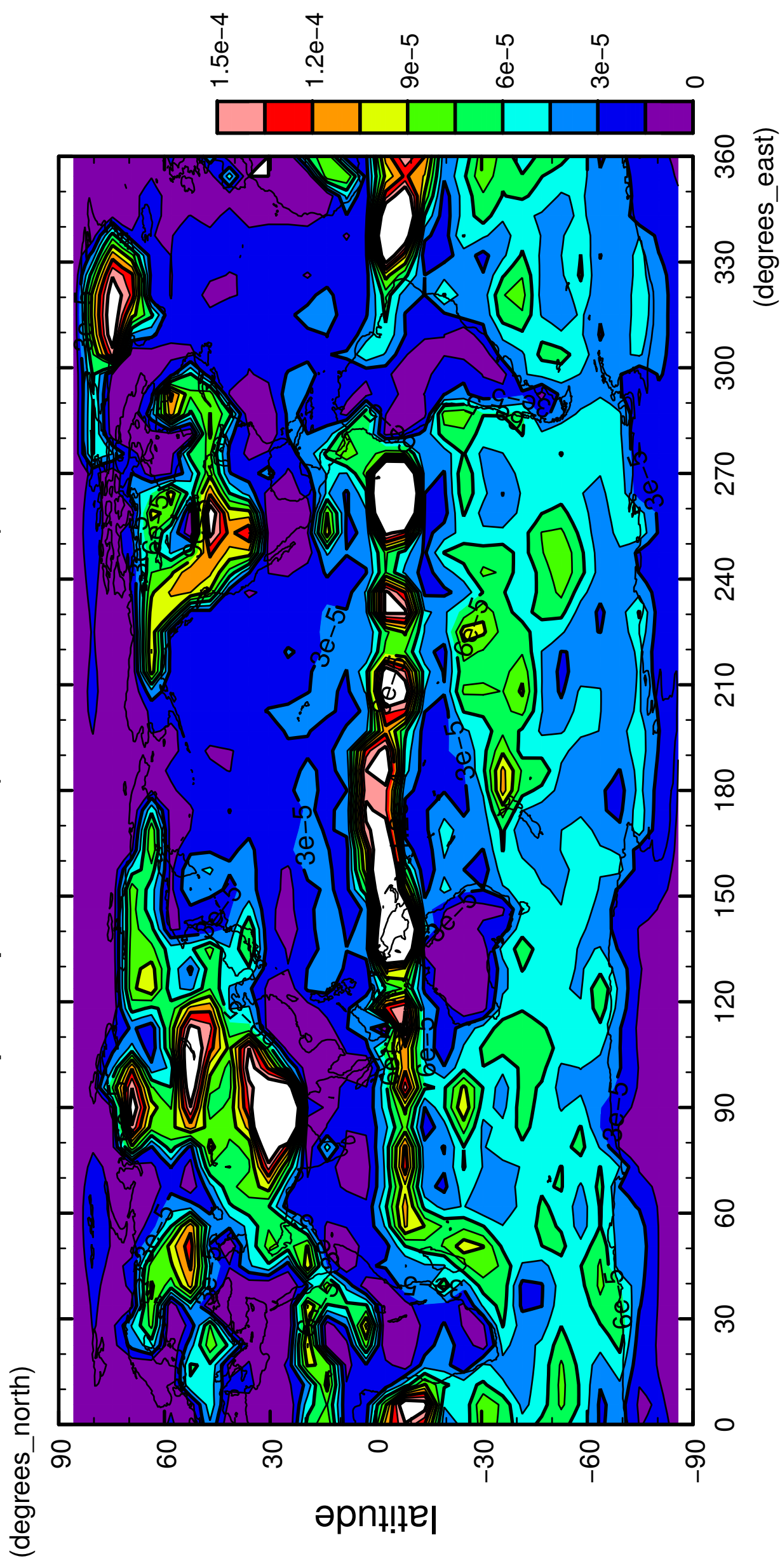


longitude

CONTOUR INTERVAL = 1.500E-05

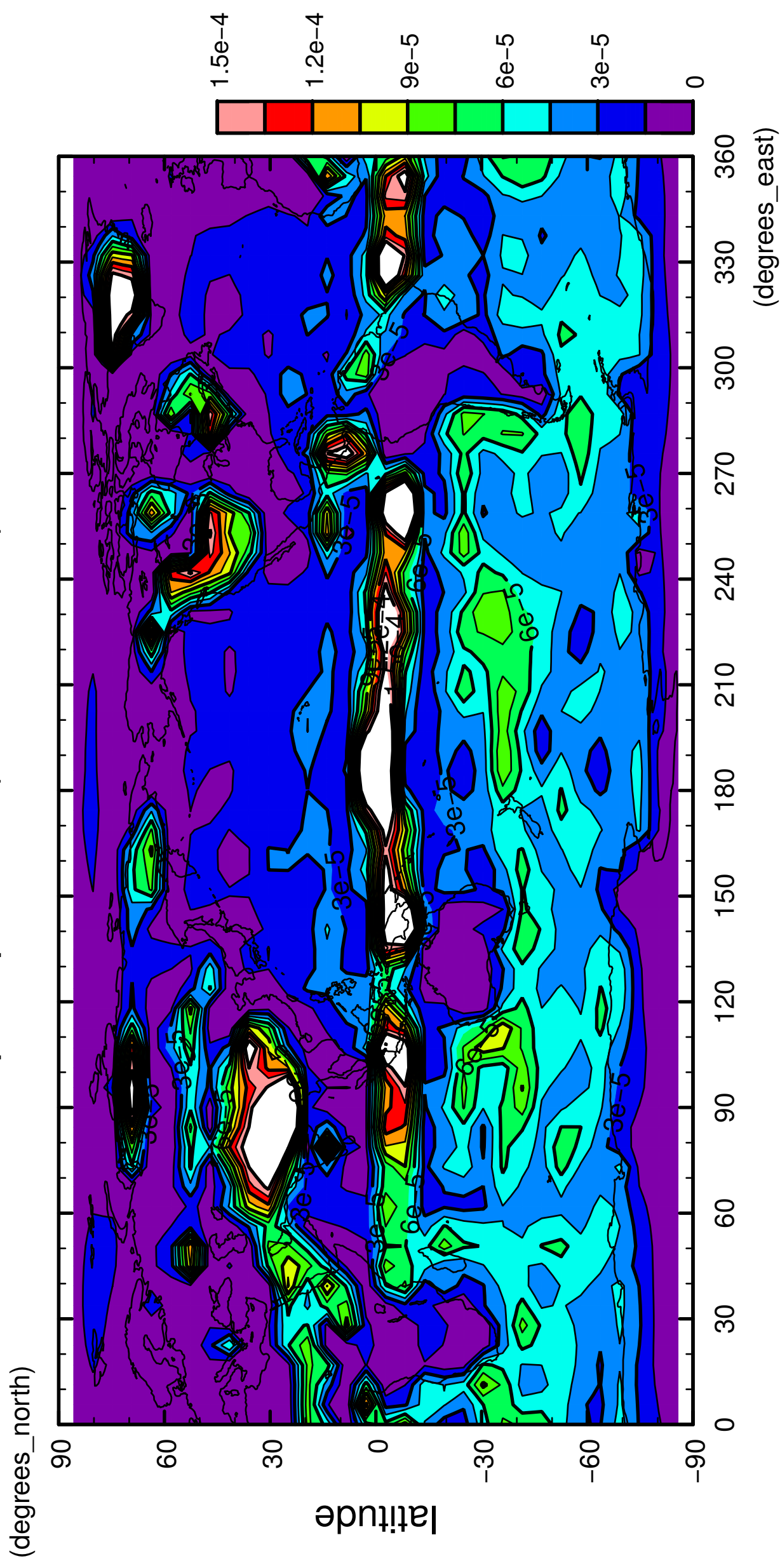
3/12

precipitation (rain + snow)



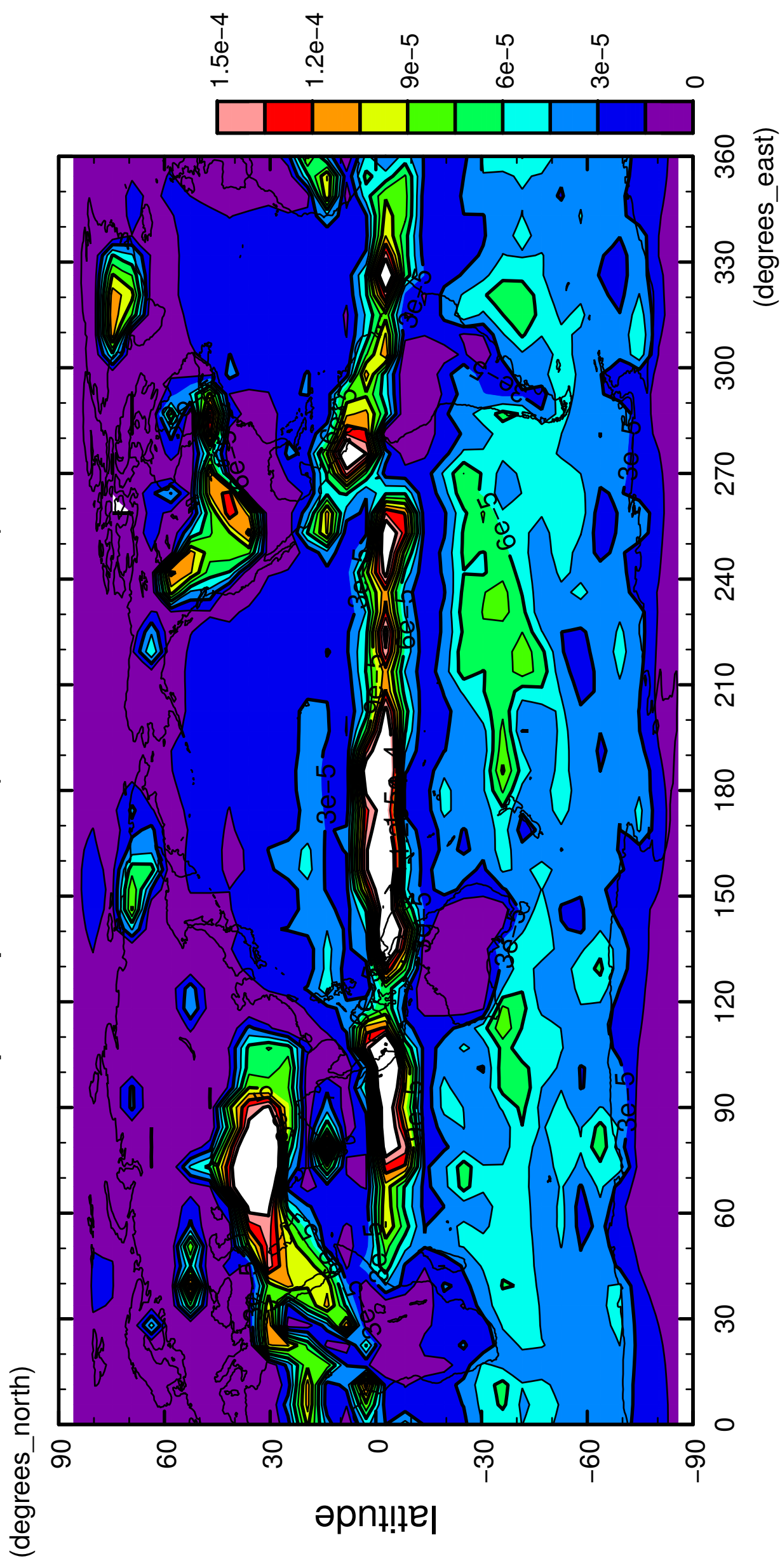
4/12

precipitation (rain + snow)



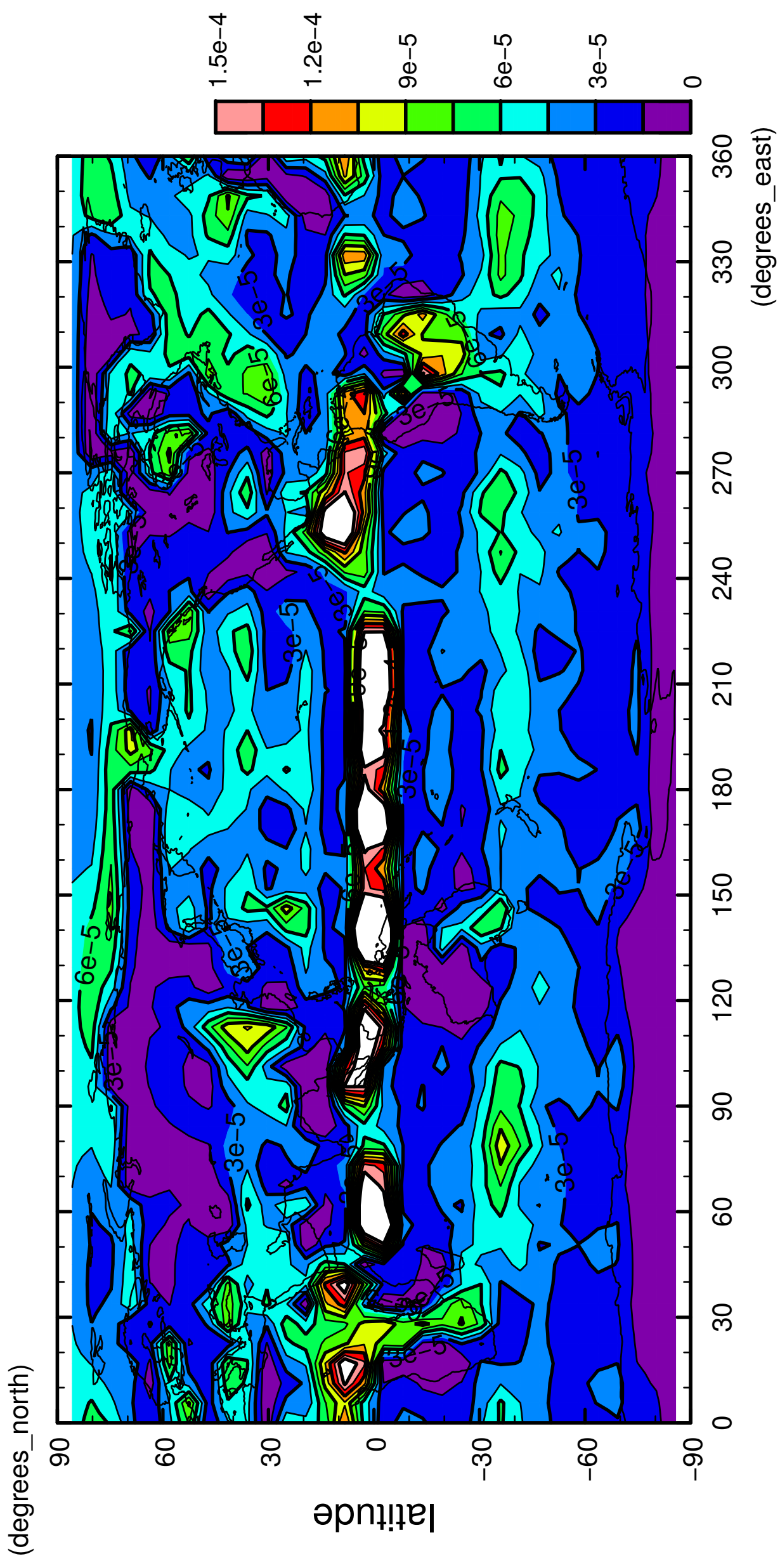
5/12

precipitation (rain + snow)



7/12

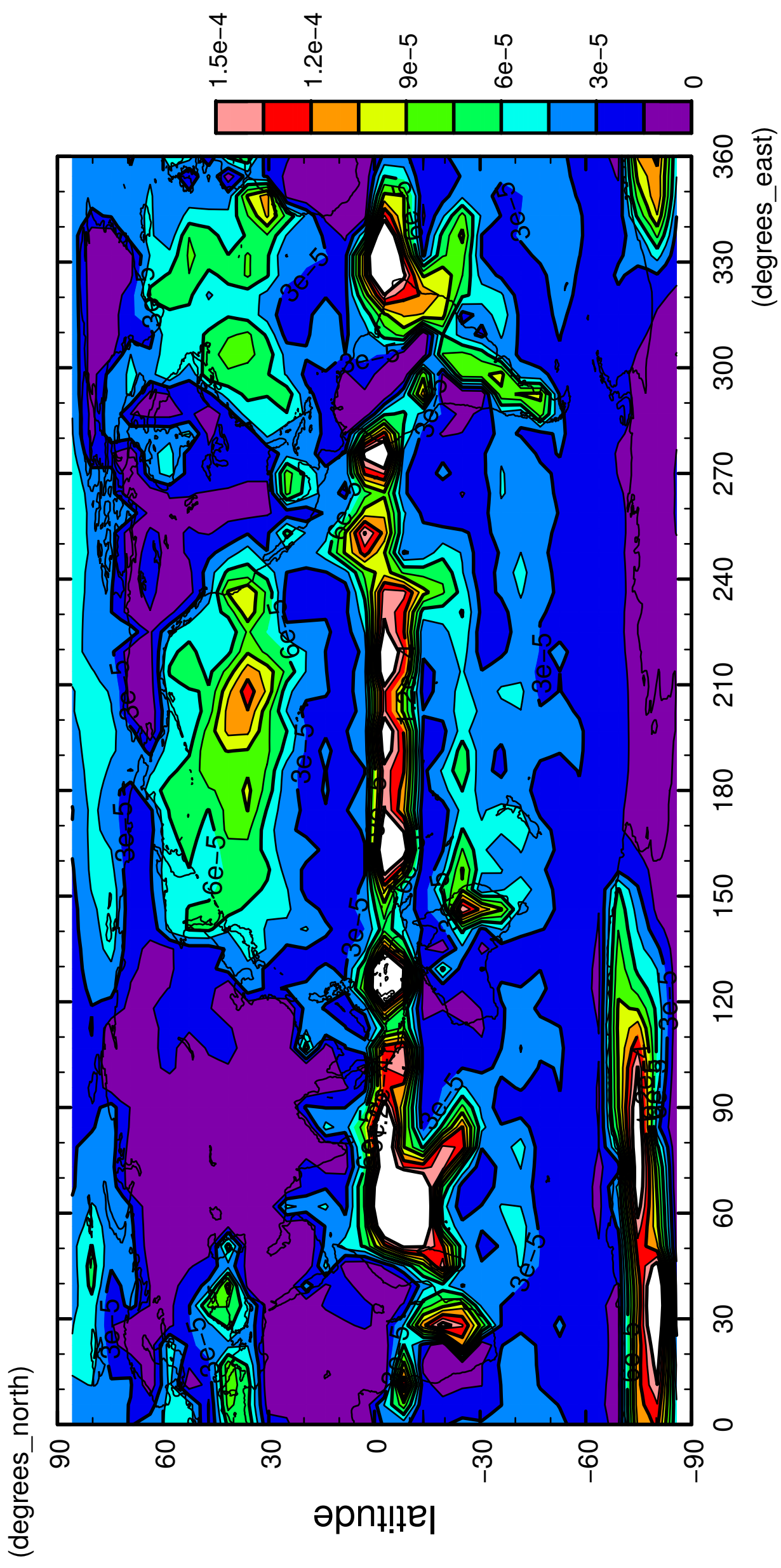
precipitation (rain + snow)



longitude
CONTOUR INTERVAL = 1.500E-05

10/12

precipitation (rain + snow)

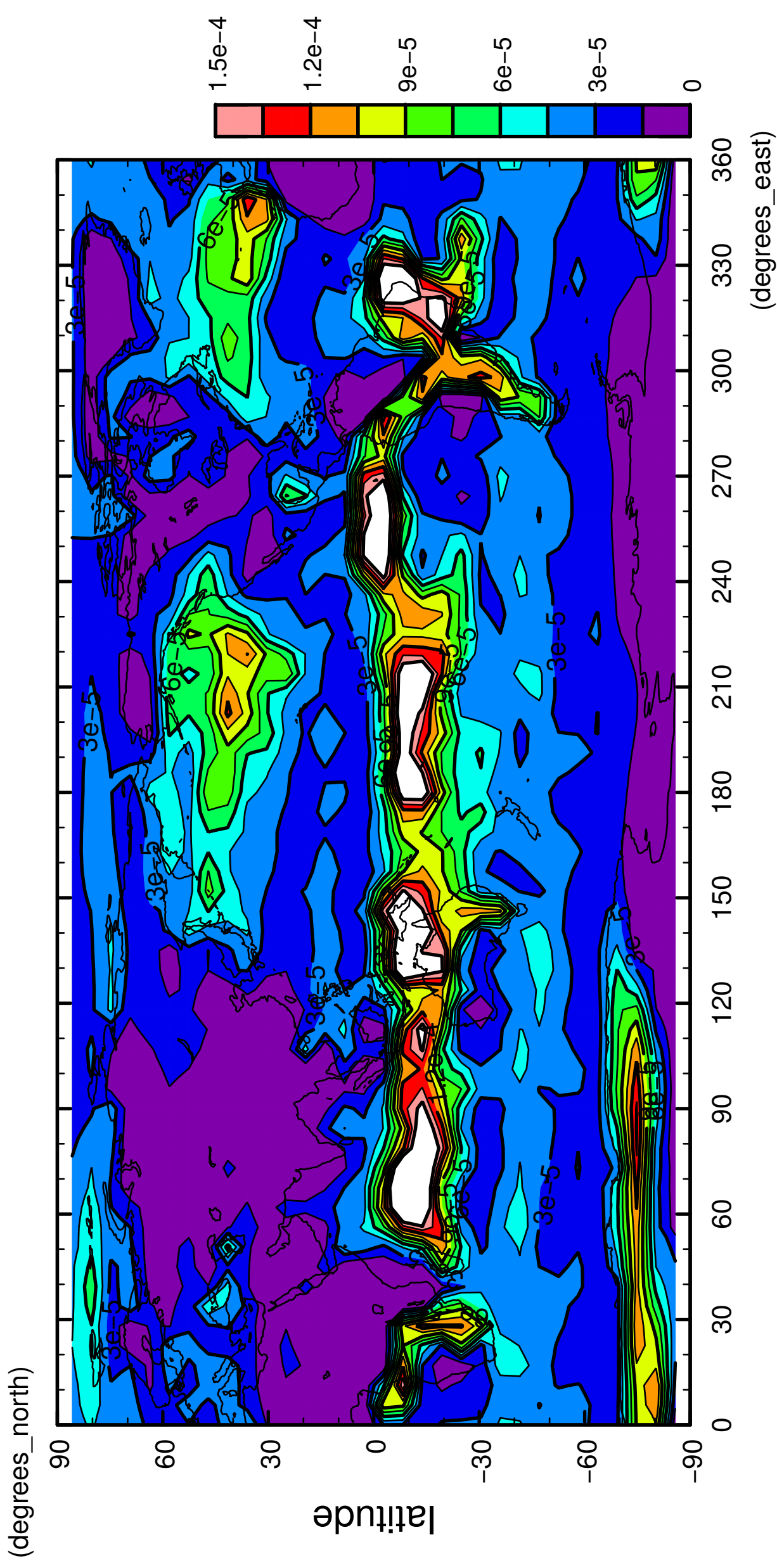


longitude

CONTOUR INTERVAL = 1.500E-05

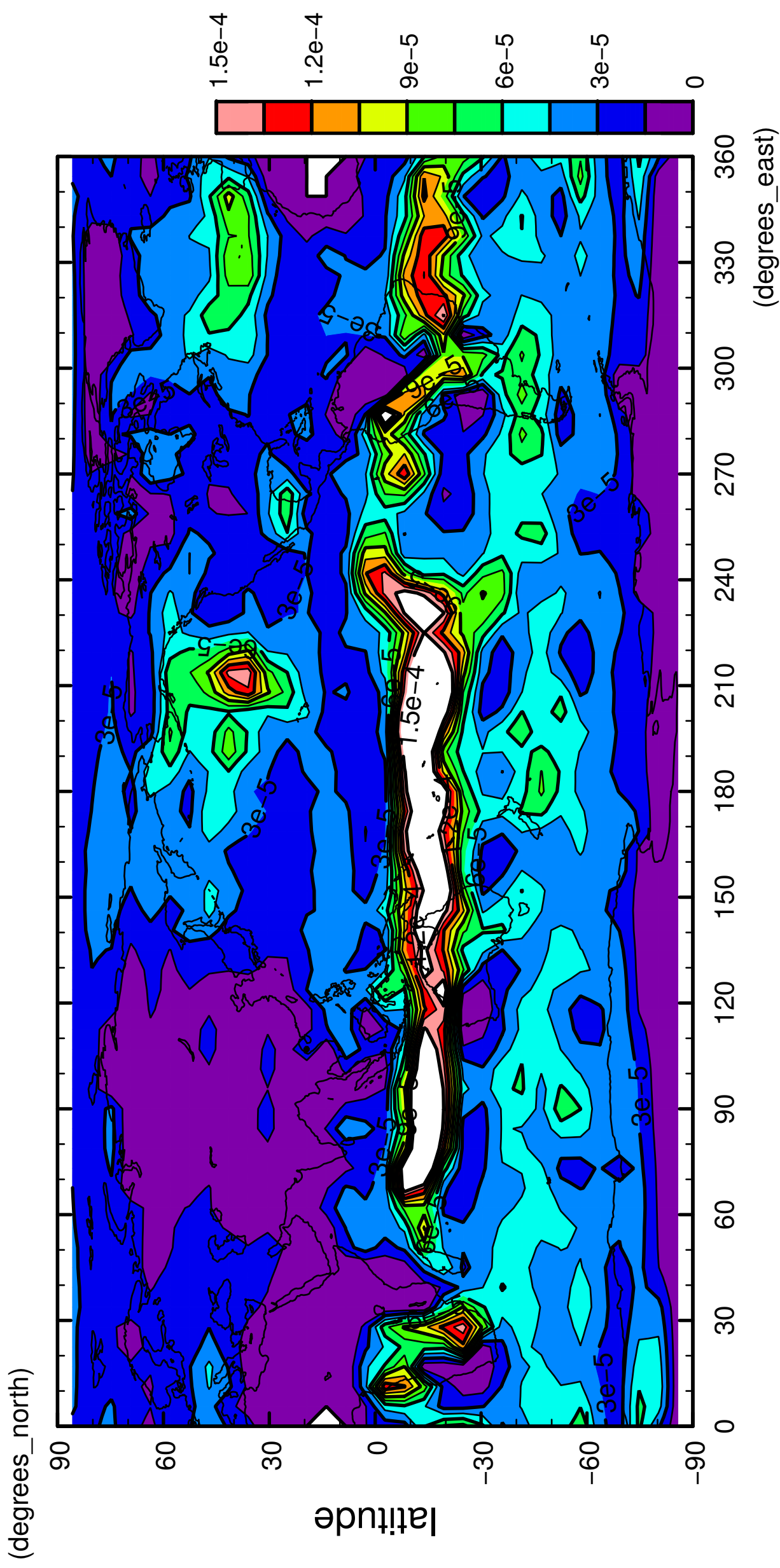
11/12

precipitation (rain + snow)



12/12

precipitation (rain + snow)



longitude

CONTOUR INTERVAL = 1.500E-05