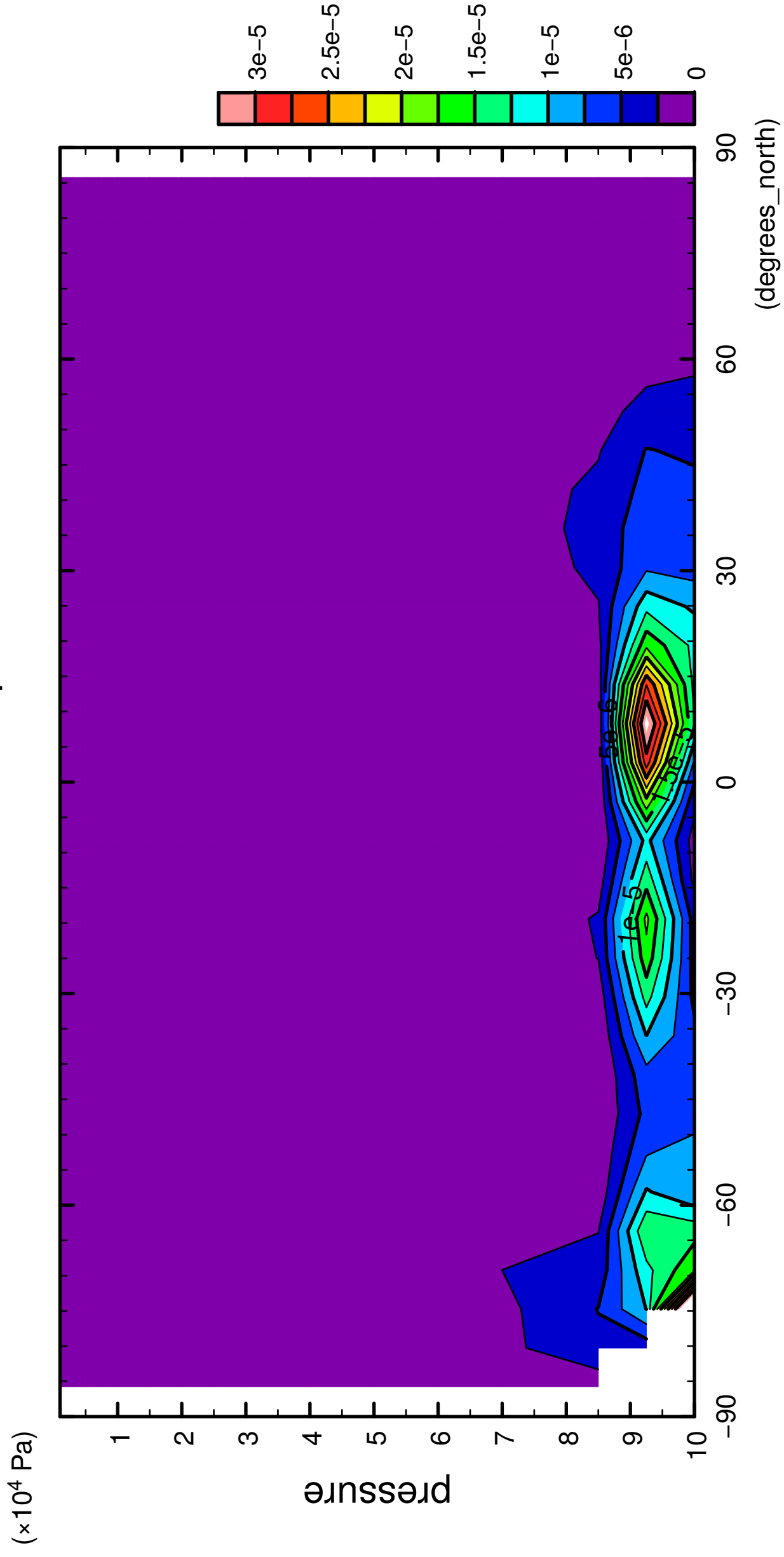


1/12

QH2OLiq

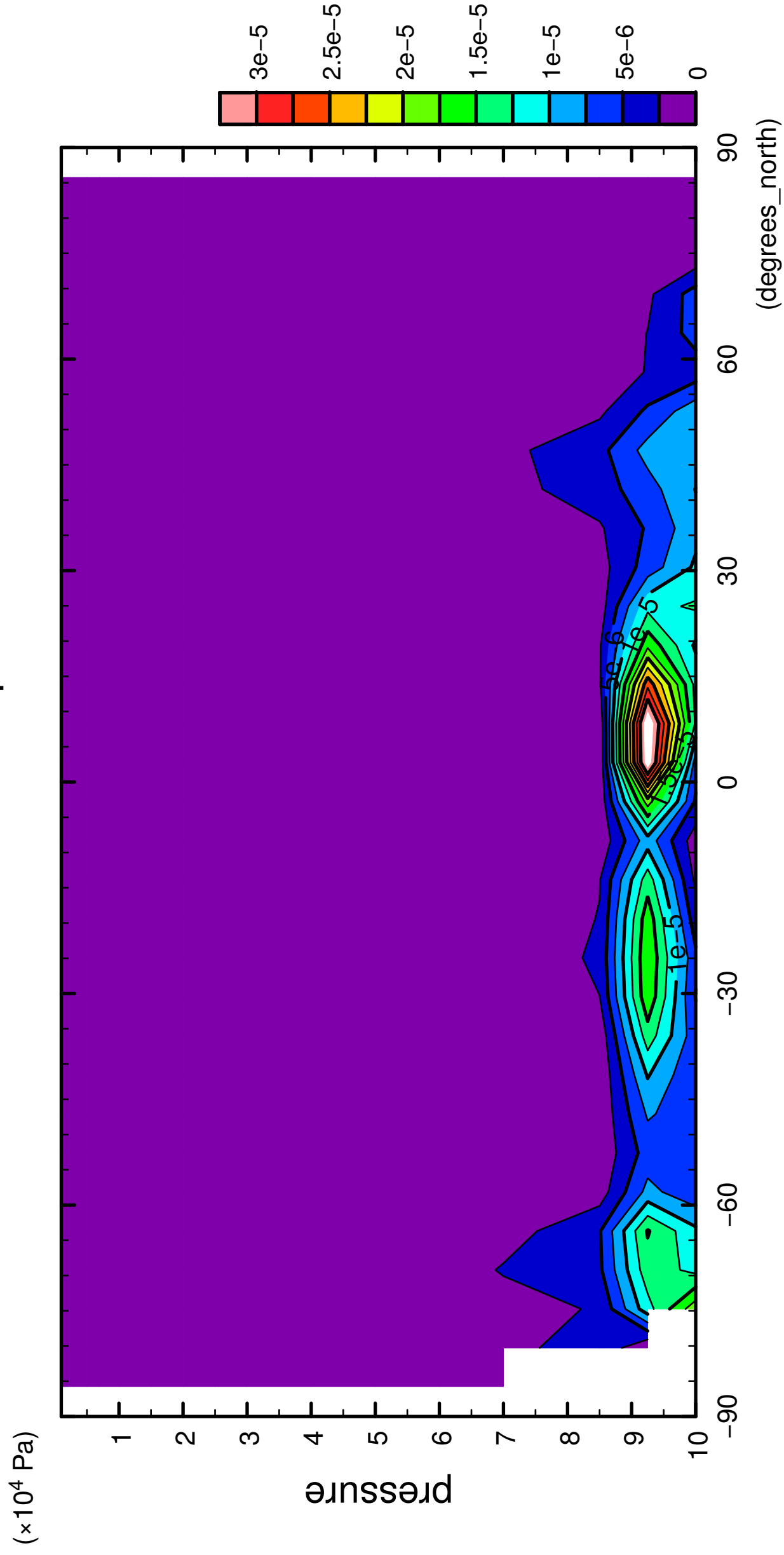


latitude

CONTOUR INTERVAL = 2.500E-06

2/12

QH2OLiq

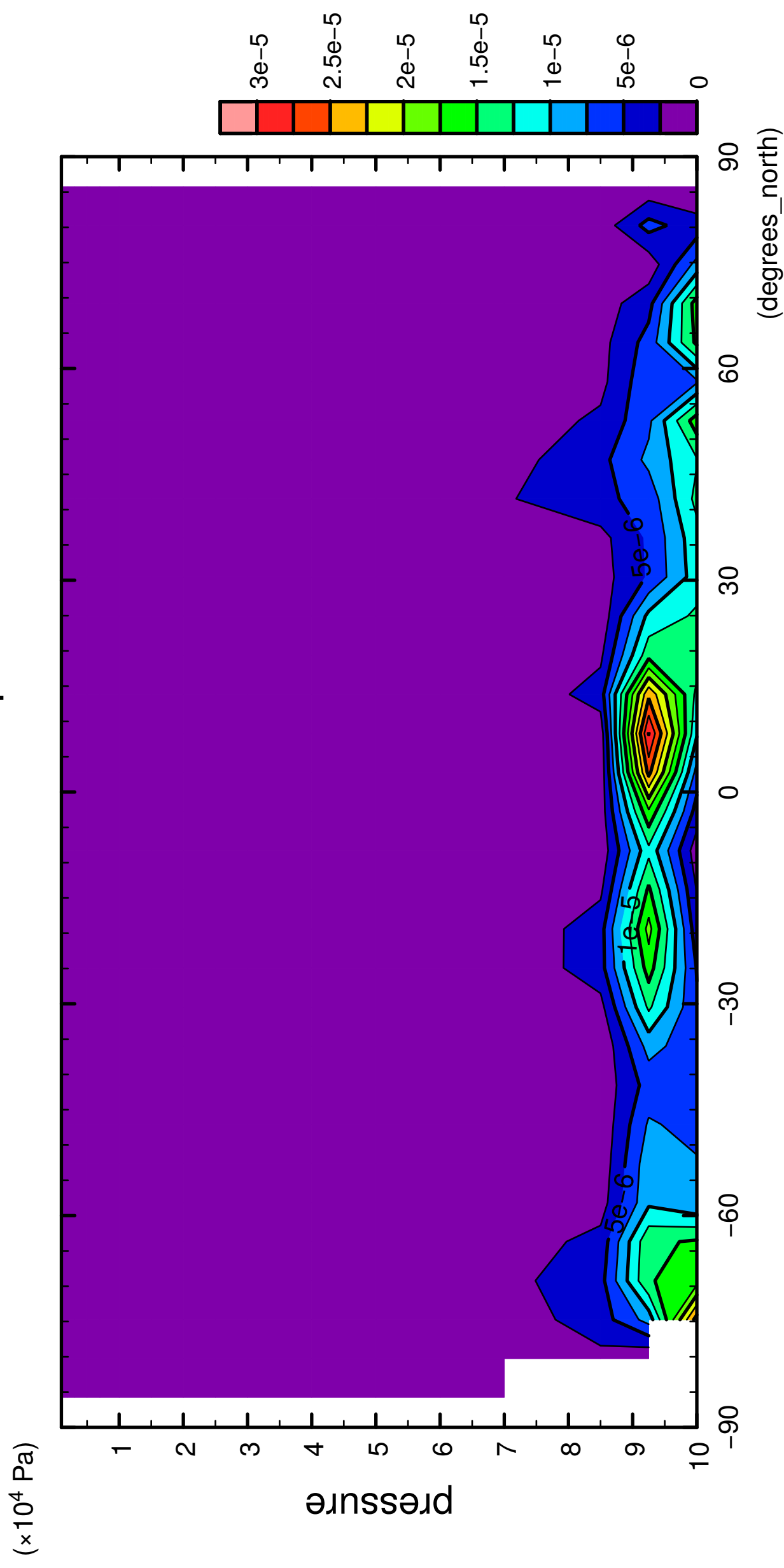


latitude

CONTOUR INTERVAL = 2.500E-06

3/12

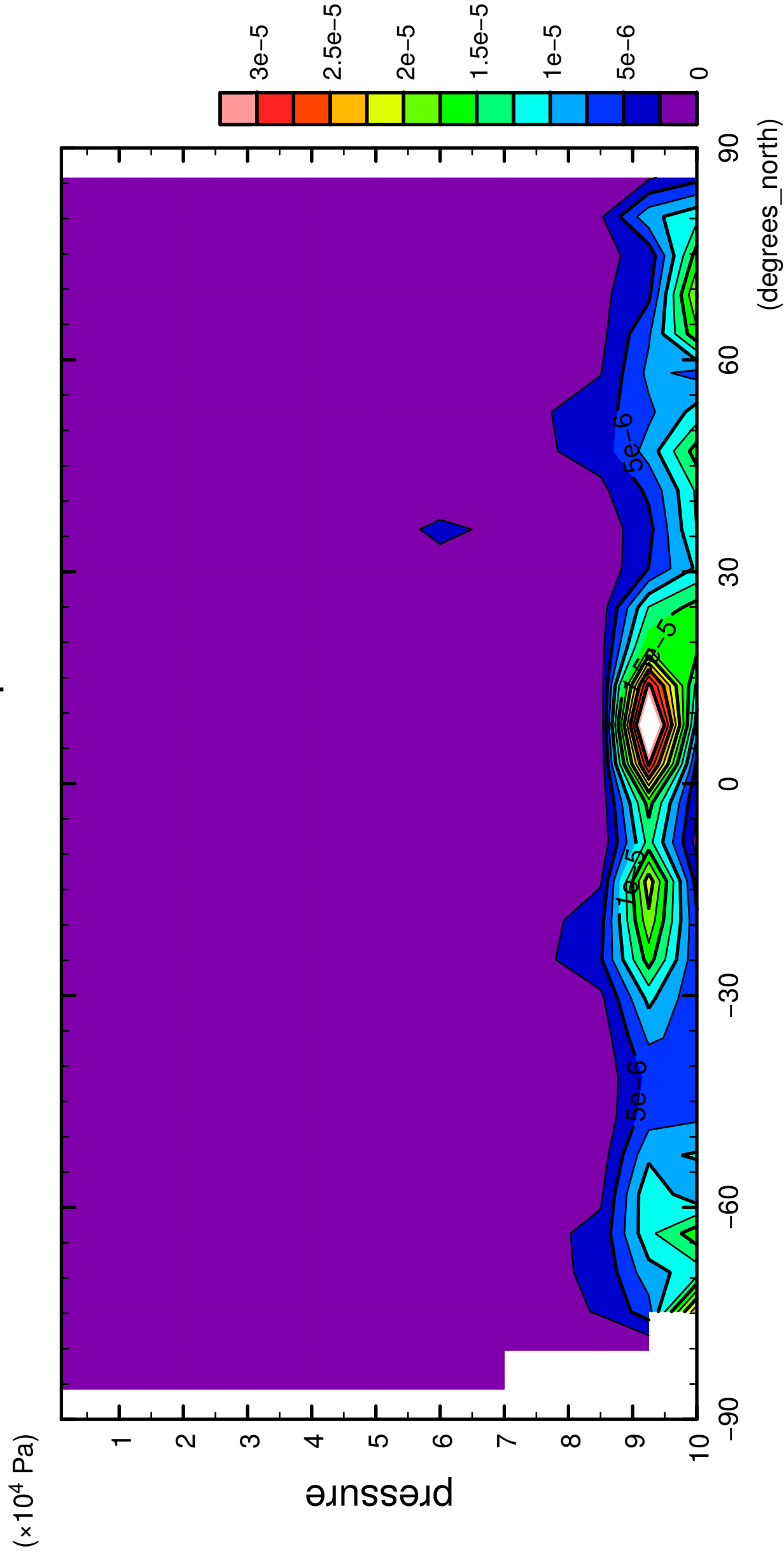
QH2OLiq



CONTOUR INTERVAL = 2.500E-06

4/12

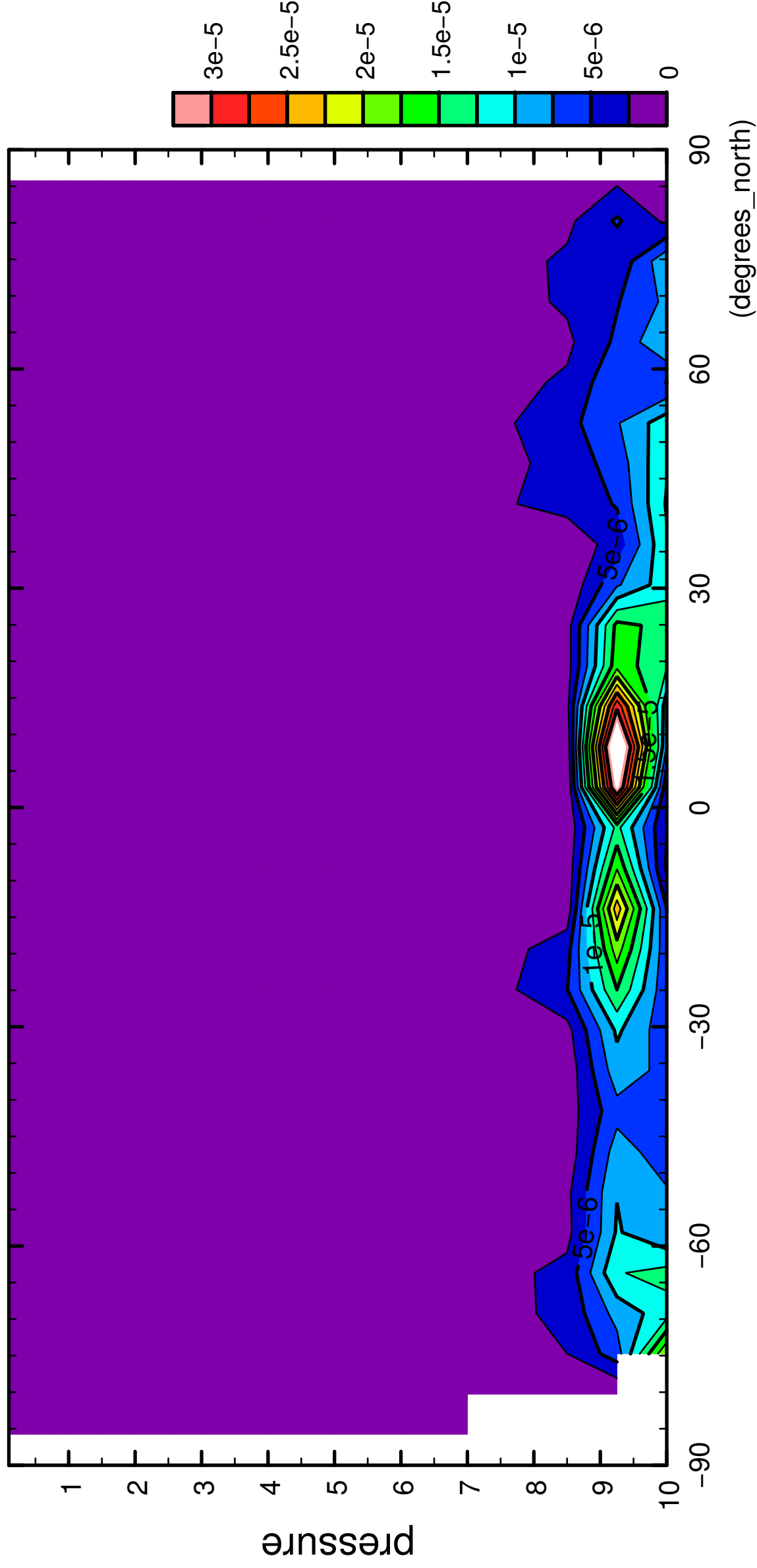
QH2OLiq



5/12

QH2OLiq

( $\times 10^4$  Pa)

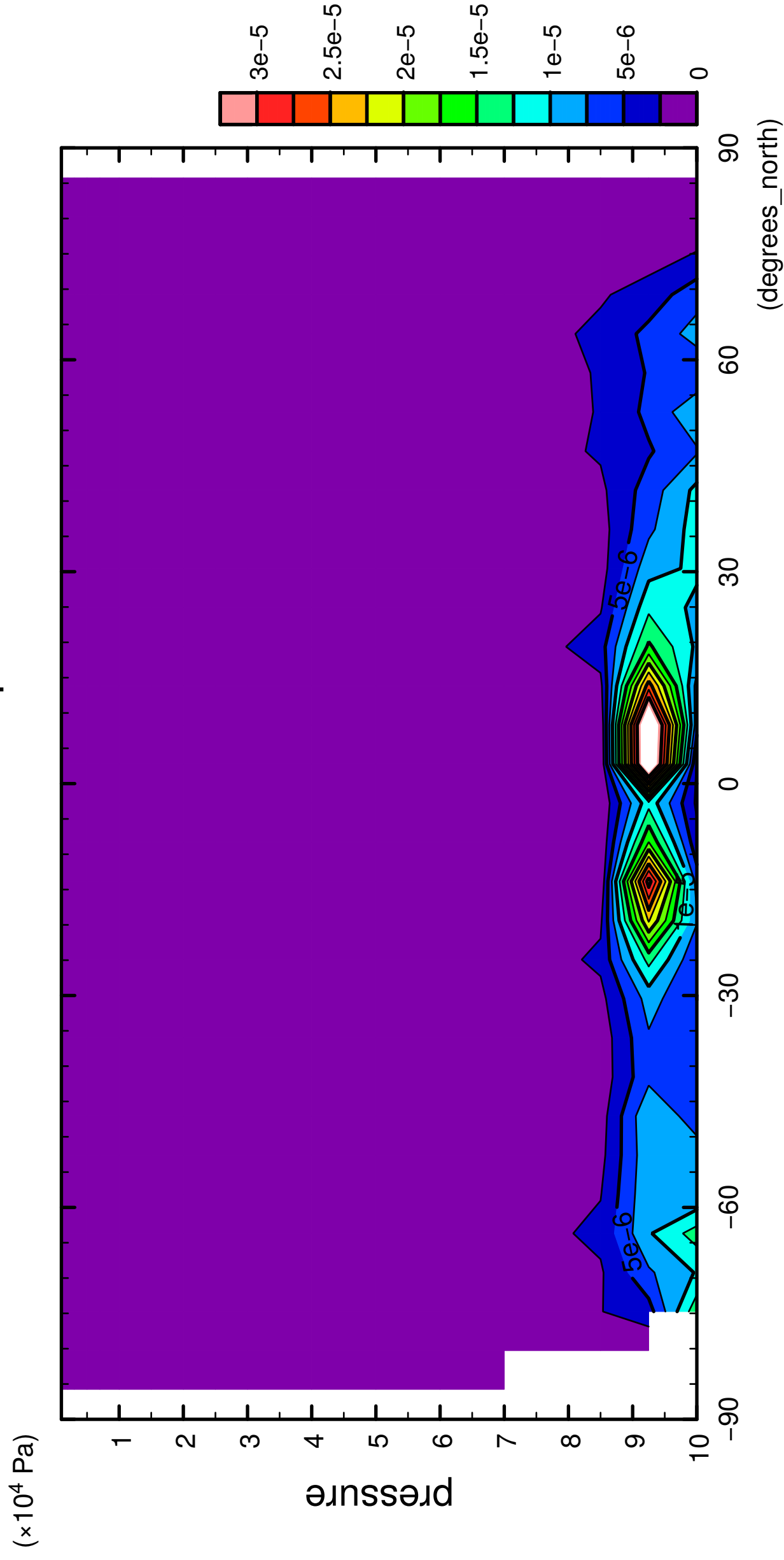


latitude

CONTOUR INTERVAL =  $2.500 \times 10^{-6}$

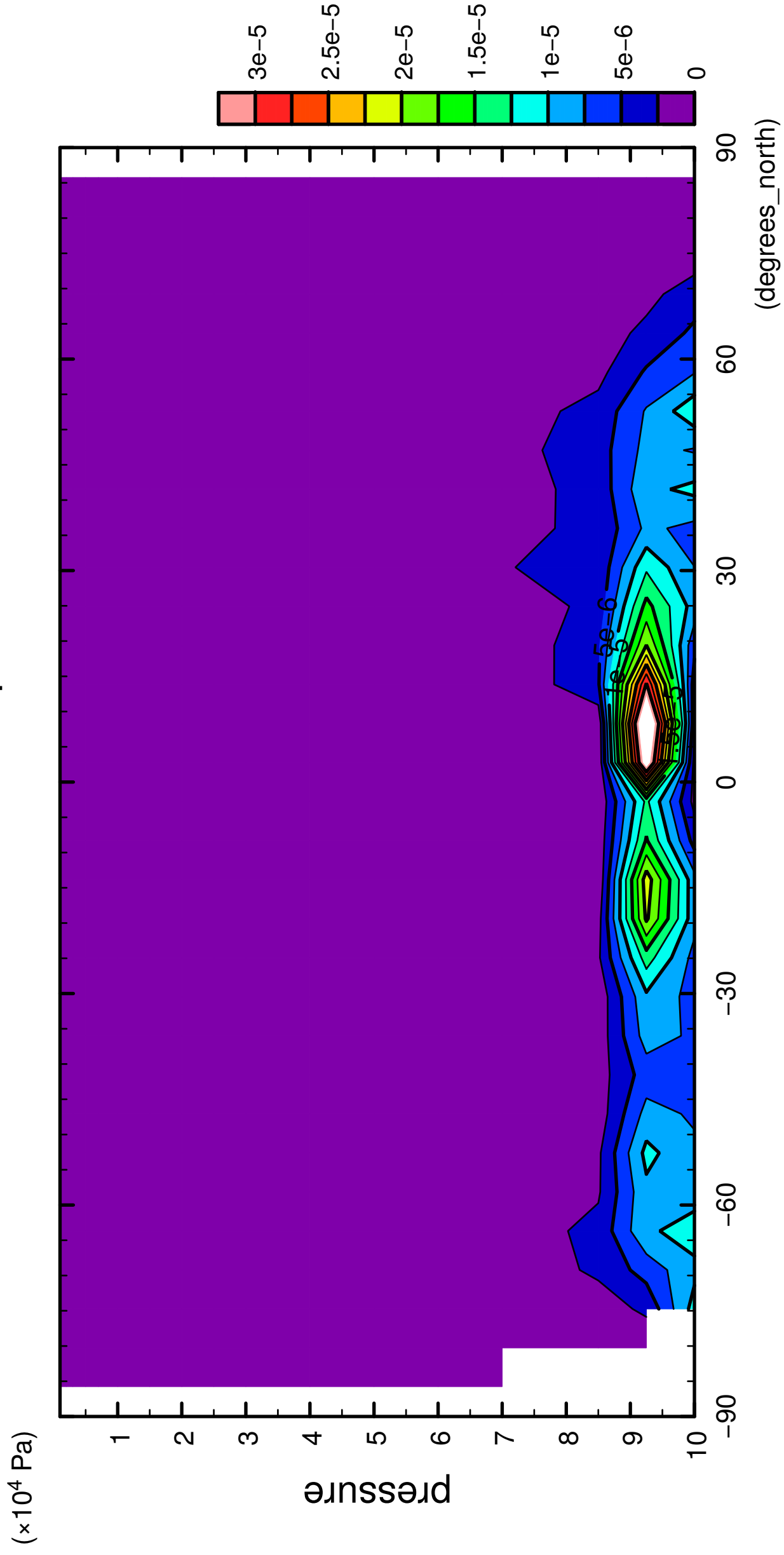
6/12

QH2OLiq



7/12

QH2OLiq

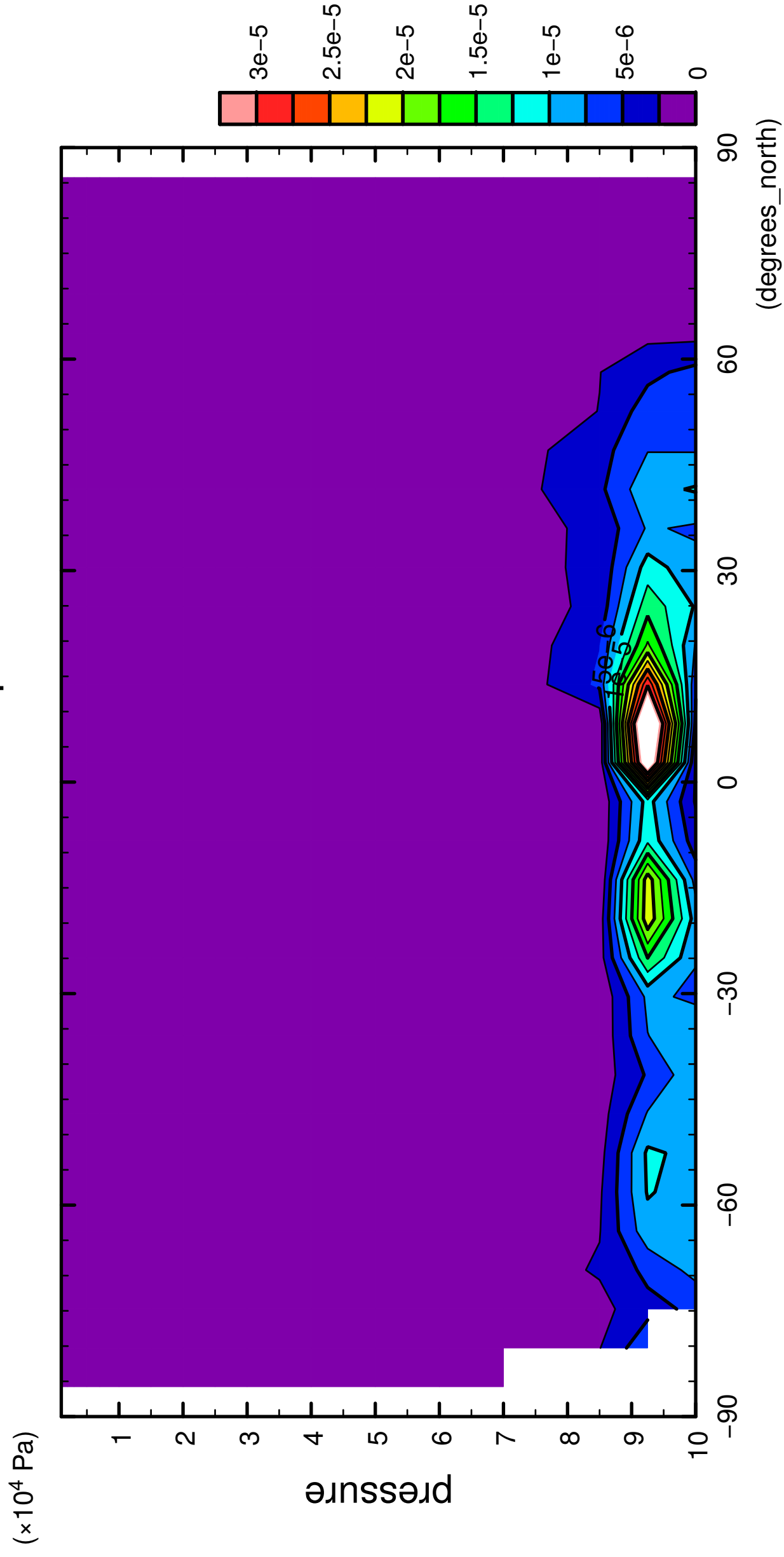


latitude

CONTOUR INTERVAL = 2.500E-06

8/12

QH2OLiq



latitude

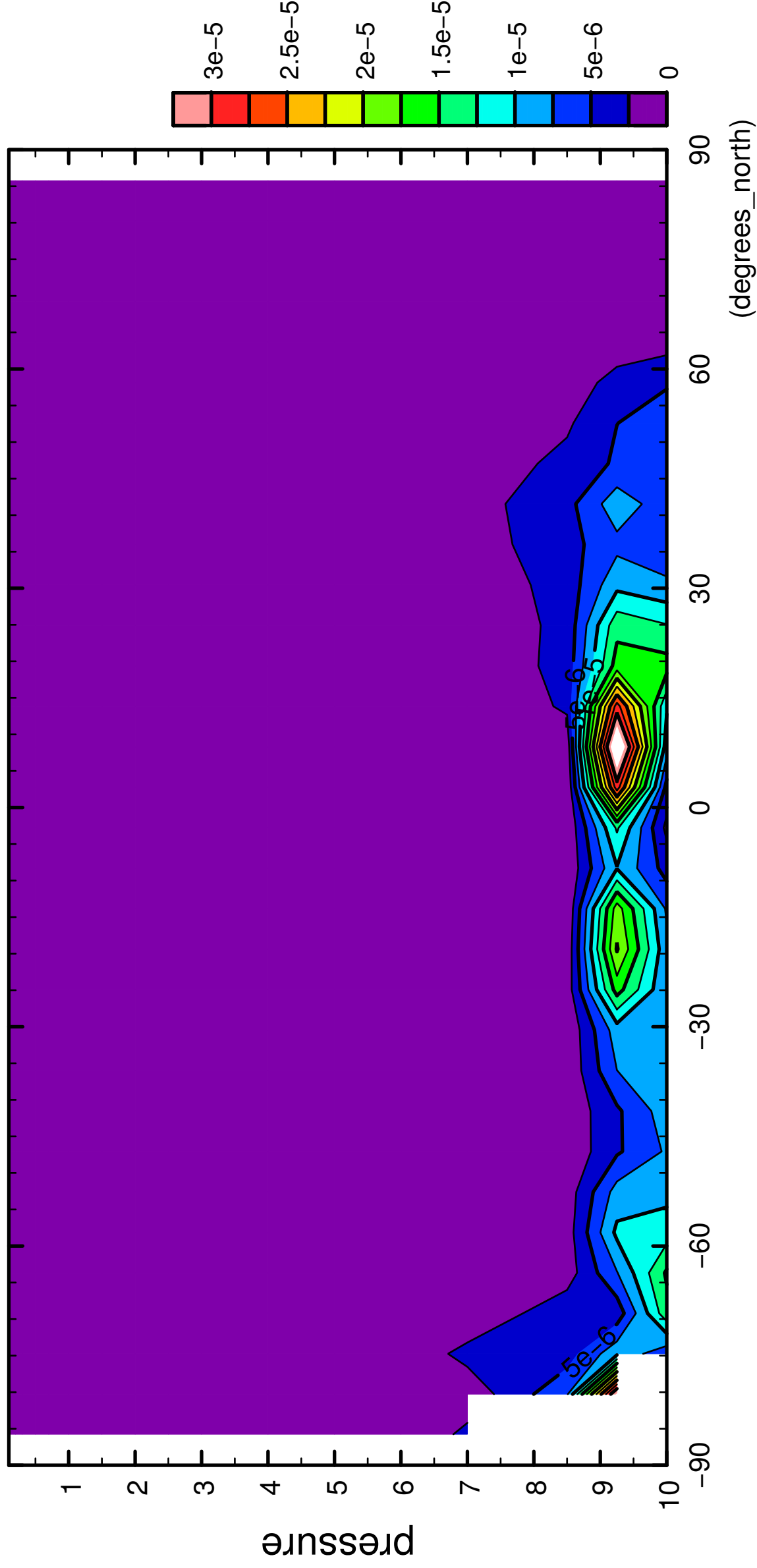
CONTOUR INTERVAL = 2.500E-06



9/12

QH2OLiq

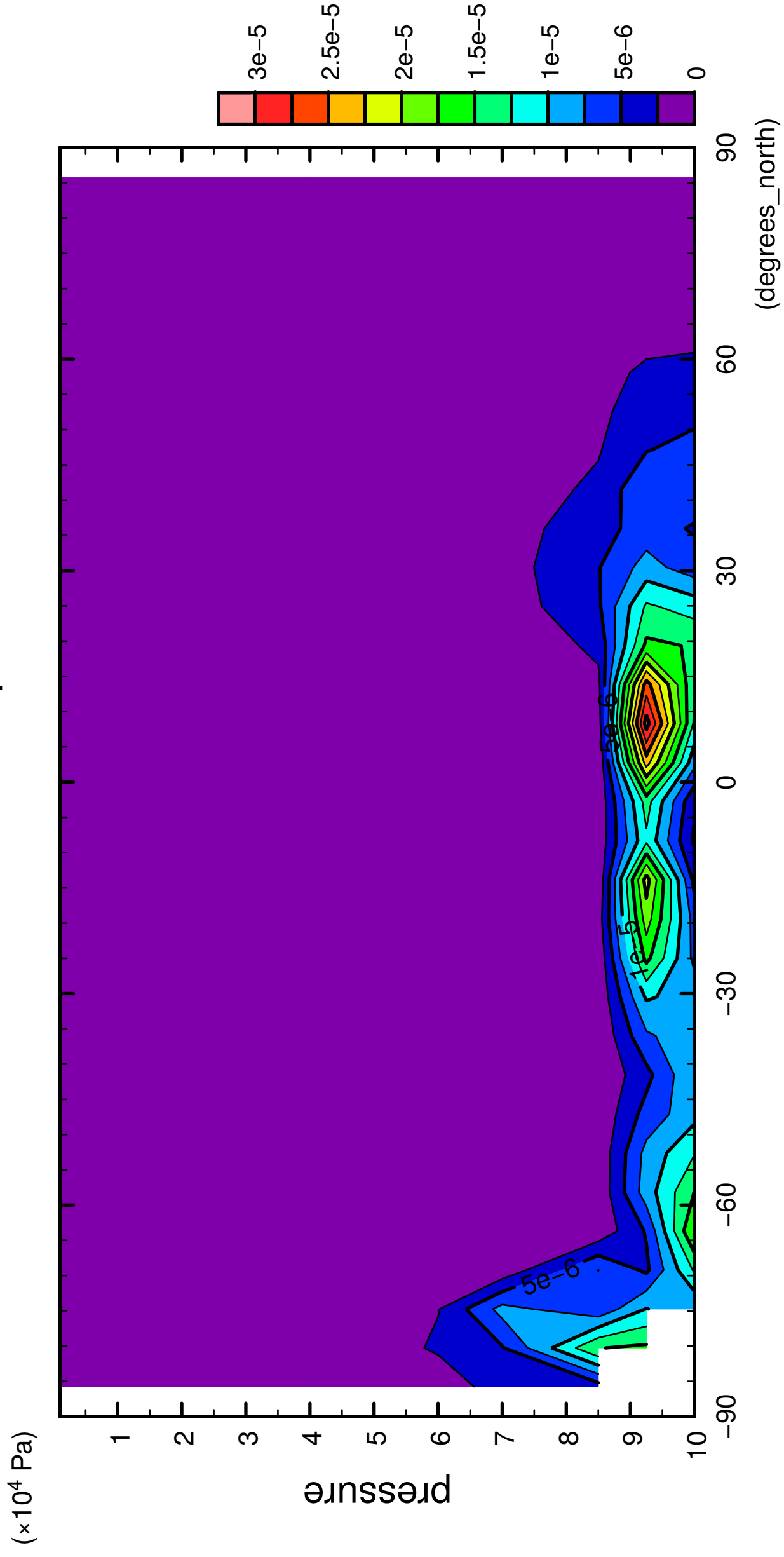
( $\times 10^4$  Pa)



CONTOUR INTERVAL = 2.500E-06

10/12

QH2OLiq

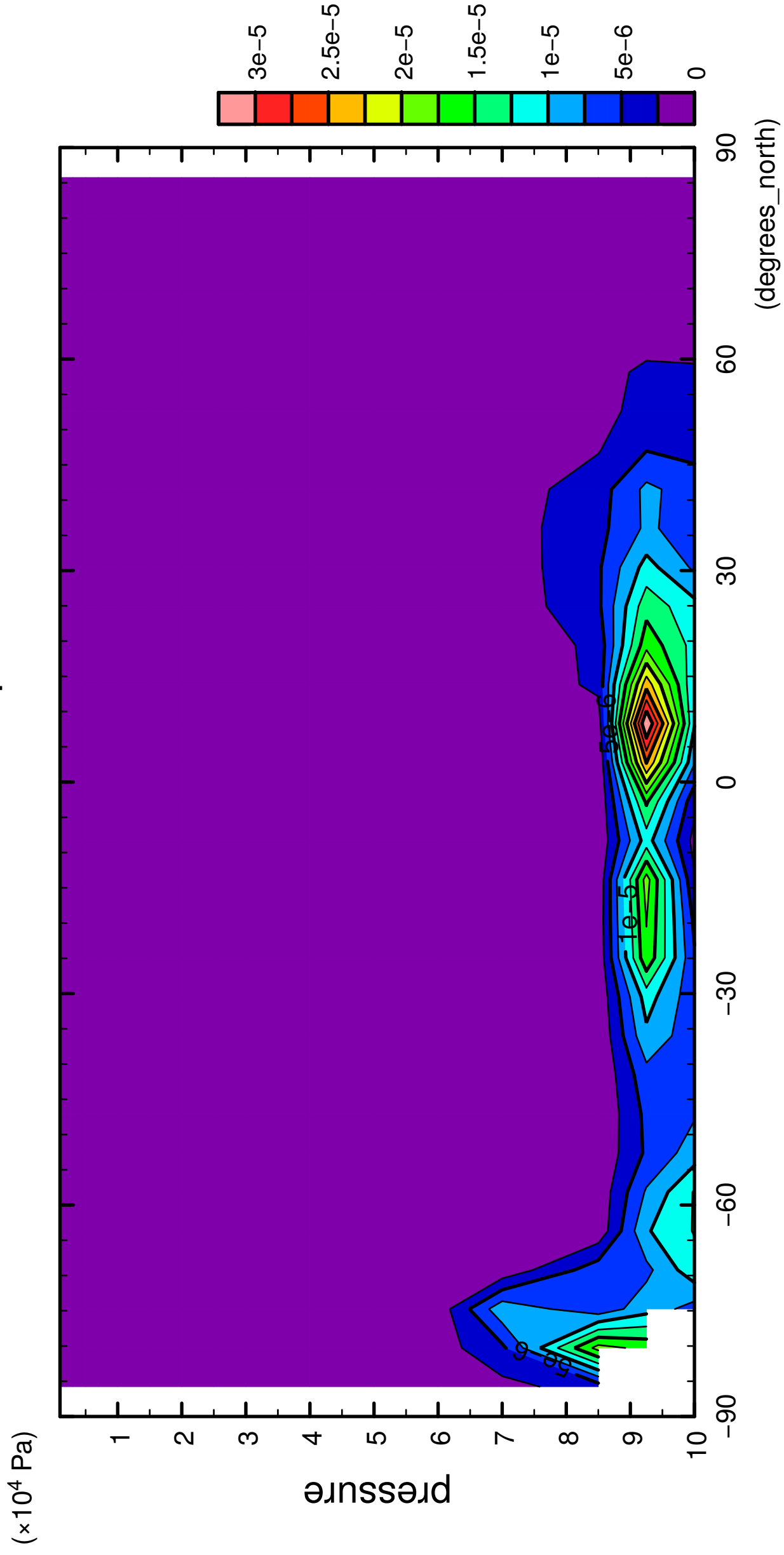


latitude

CONTOUR INTERVAL =  $2.500 \times 10^{-6}$

11/12

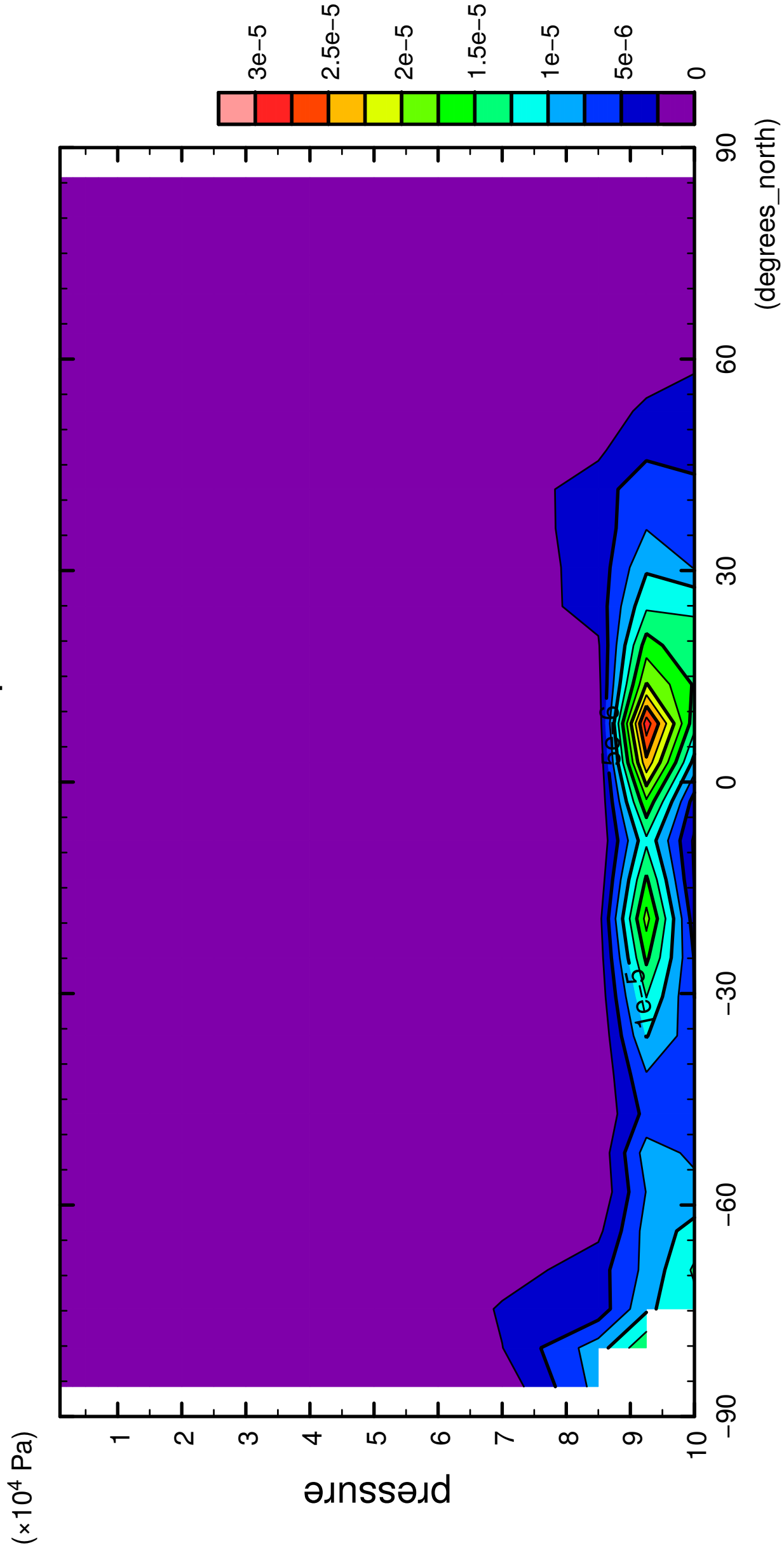
QH2OLiq



CONTOUR INTERVAL = 2.500E-06

12/12

QH2OLiq



CONTOUR INTERVAL = 2.500E-06