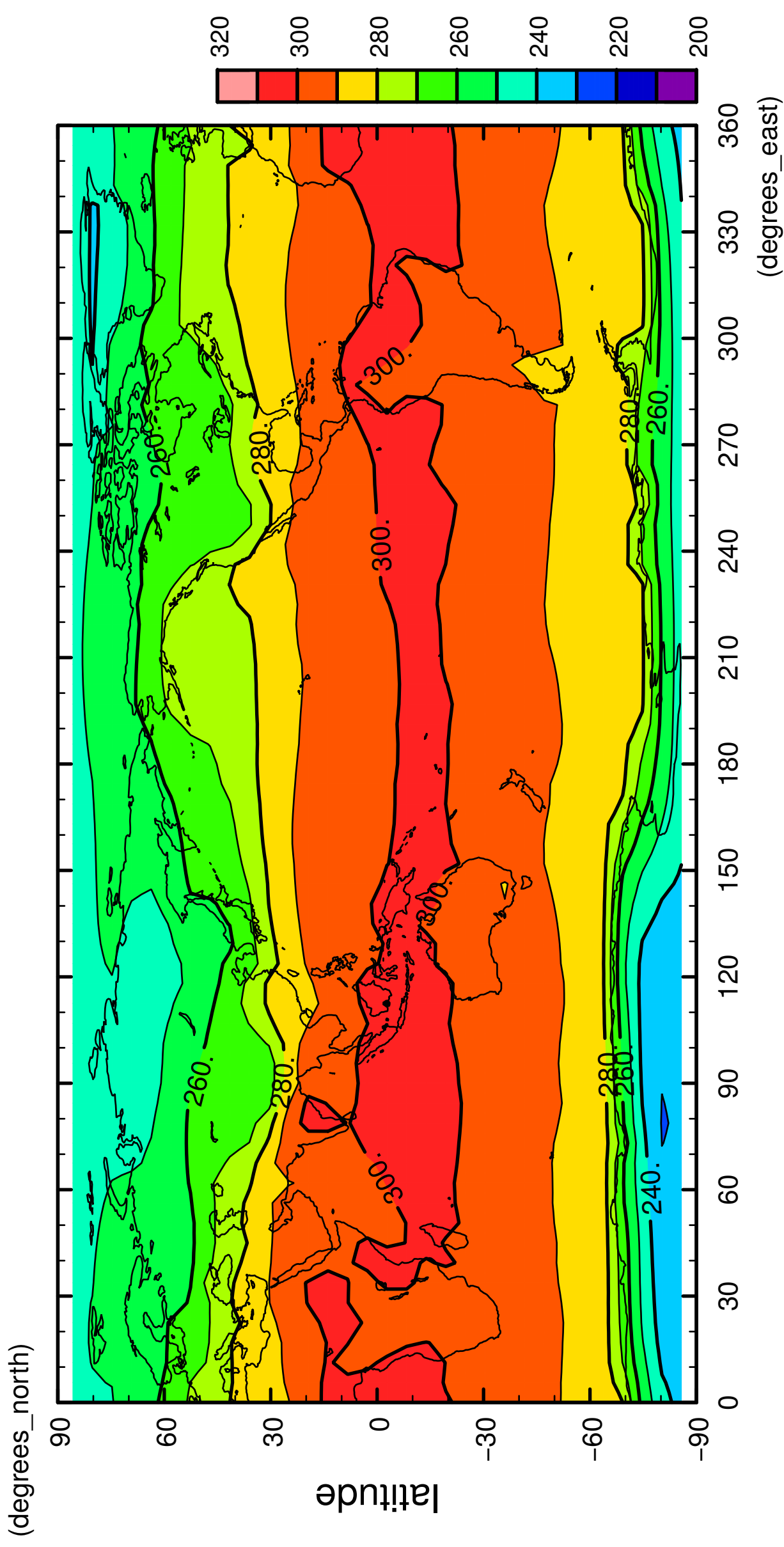


1/12

# surface temperature

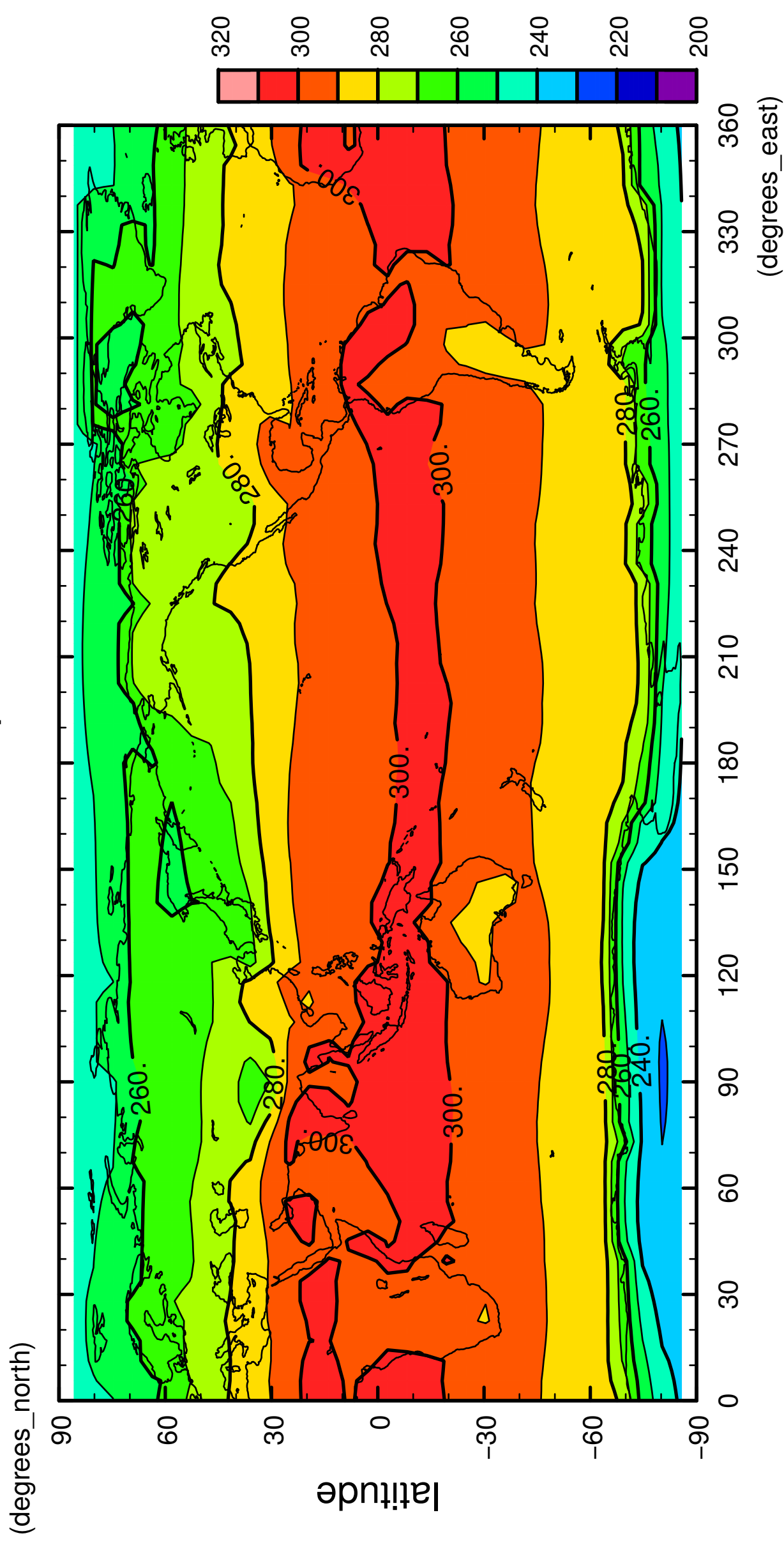


longitude

CONTOUR INTERVAL = 1.000E+01

2/12

# surface temperature

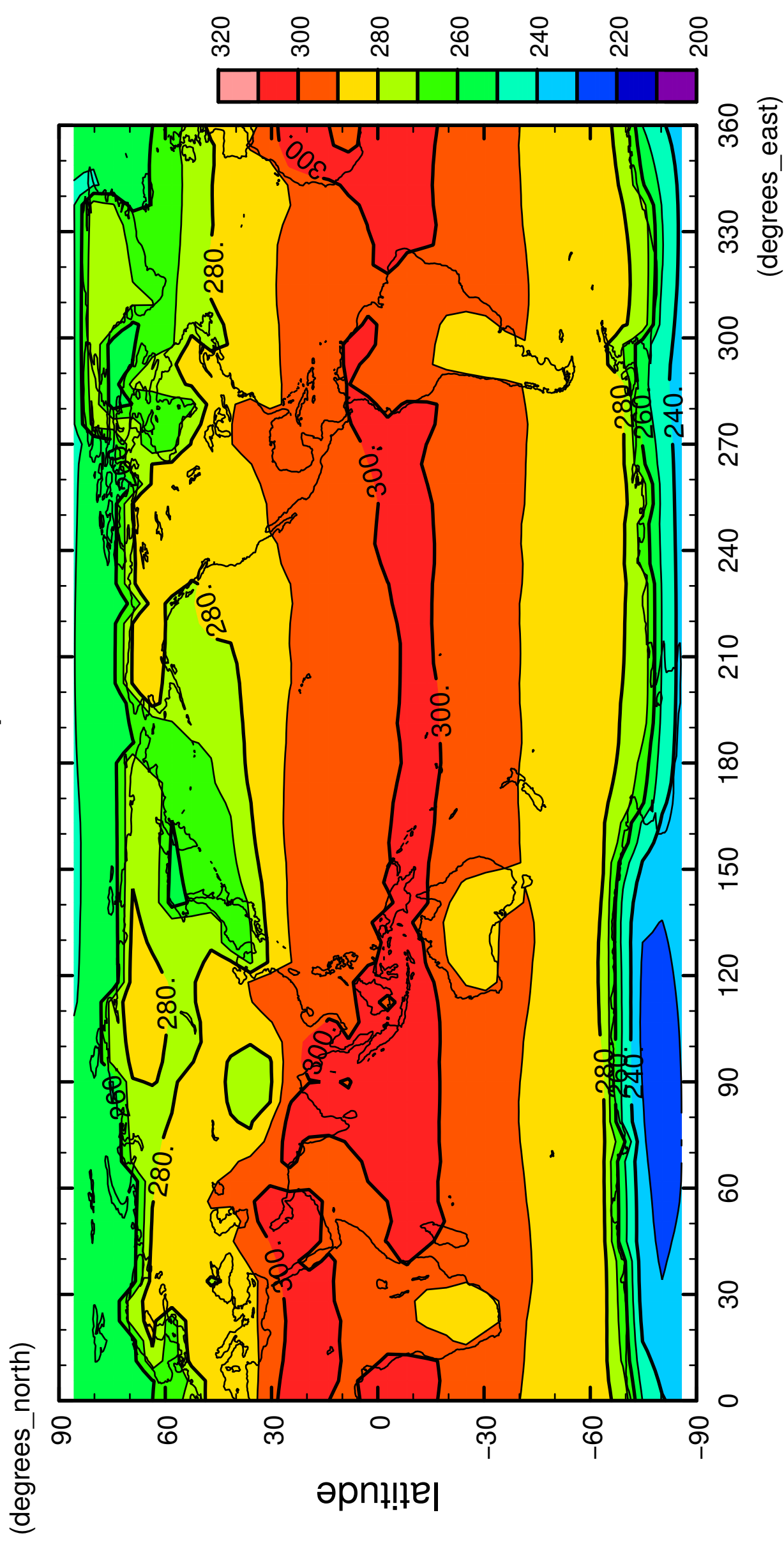


longitude

CONTOUR INTERVAL = 1.000E+01

3/12

# surface temperature

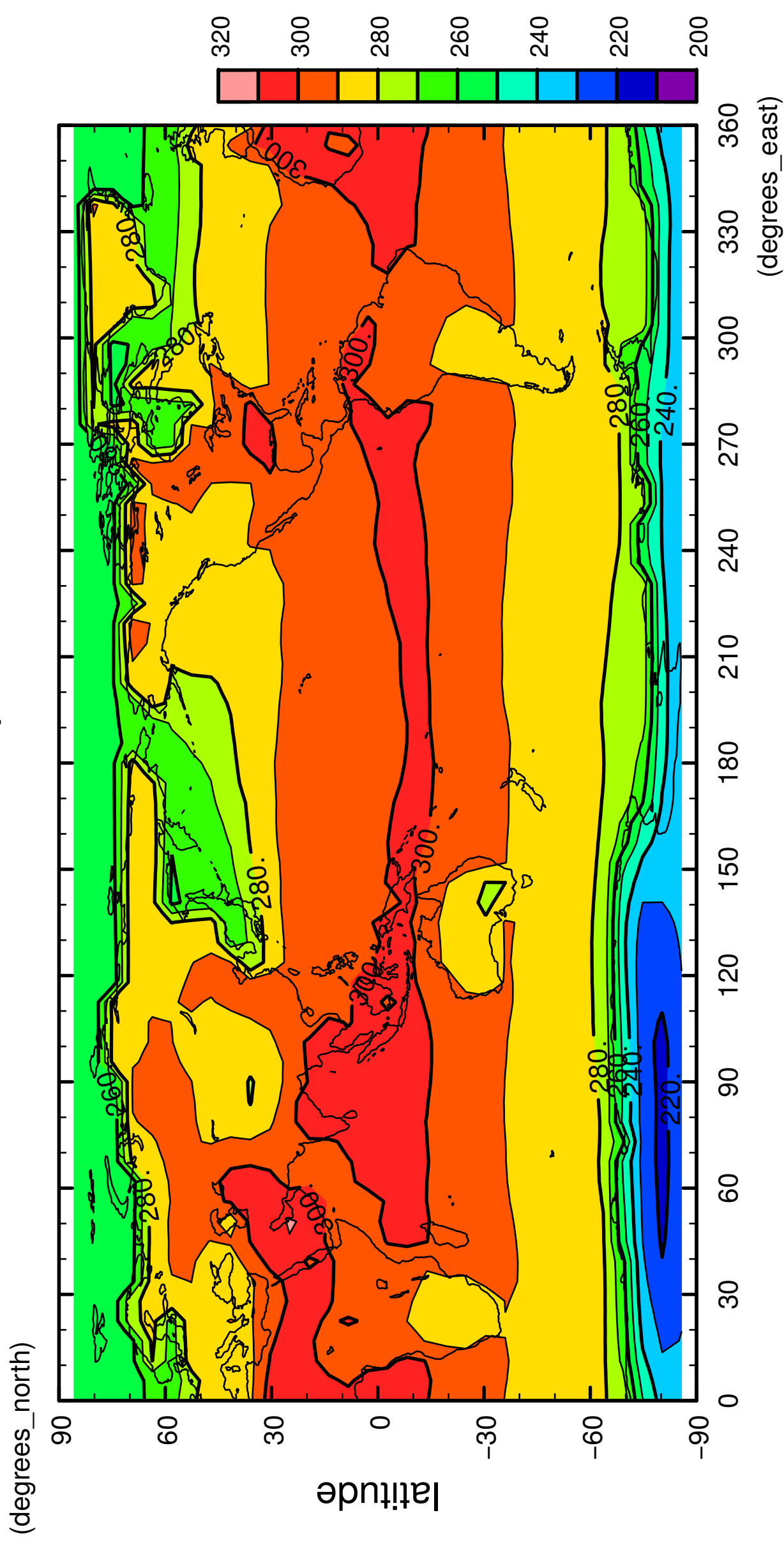


longitude

CONTOUR INTERVAL = 1.000E+01

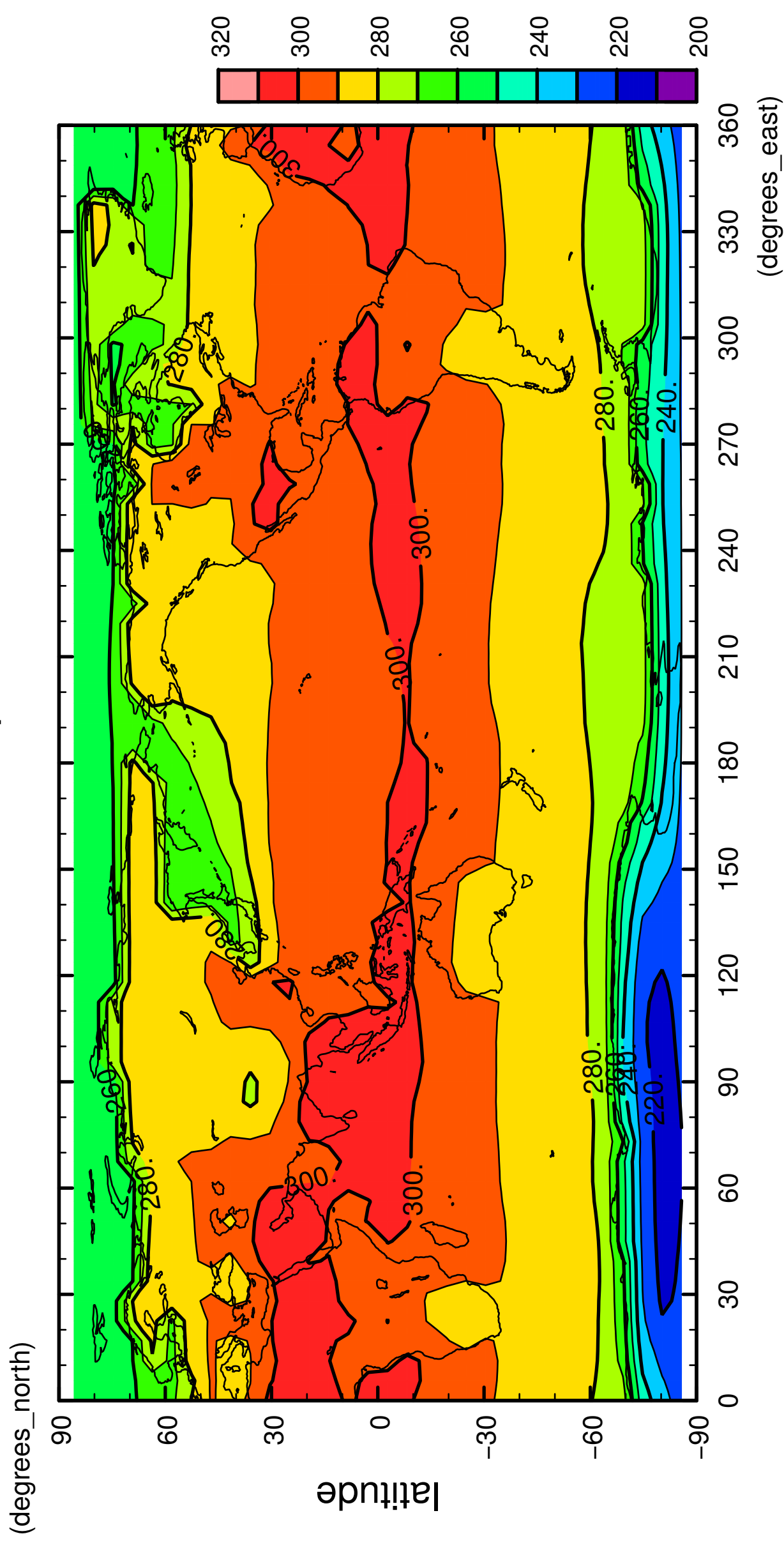
4/12

# surface temperature



5/12

# surface temperature

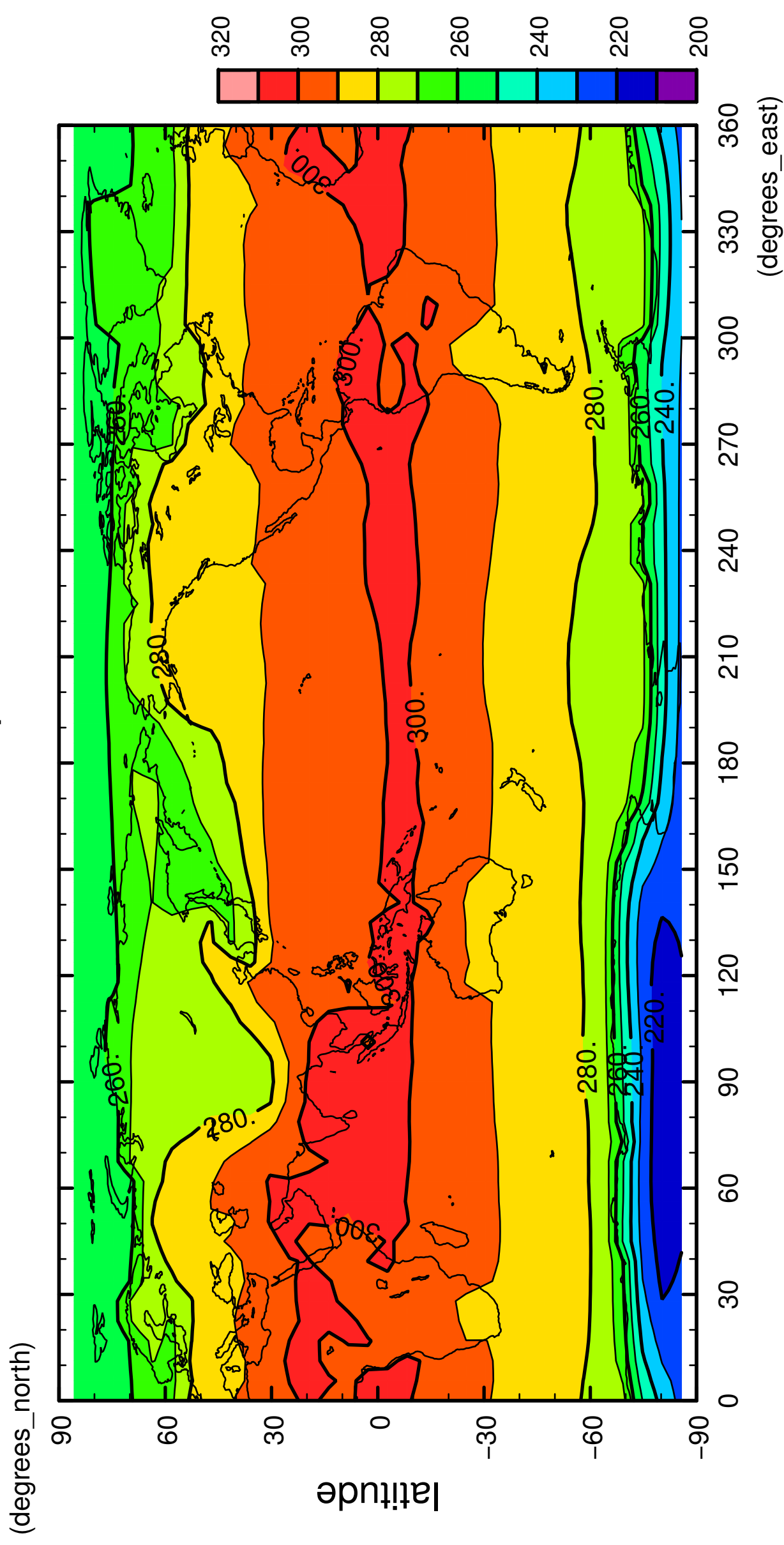


longitude

CONTOUR INTERVAL = 1.000E+01

6/12

# surface temperature

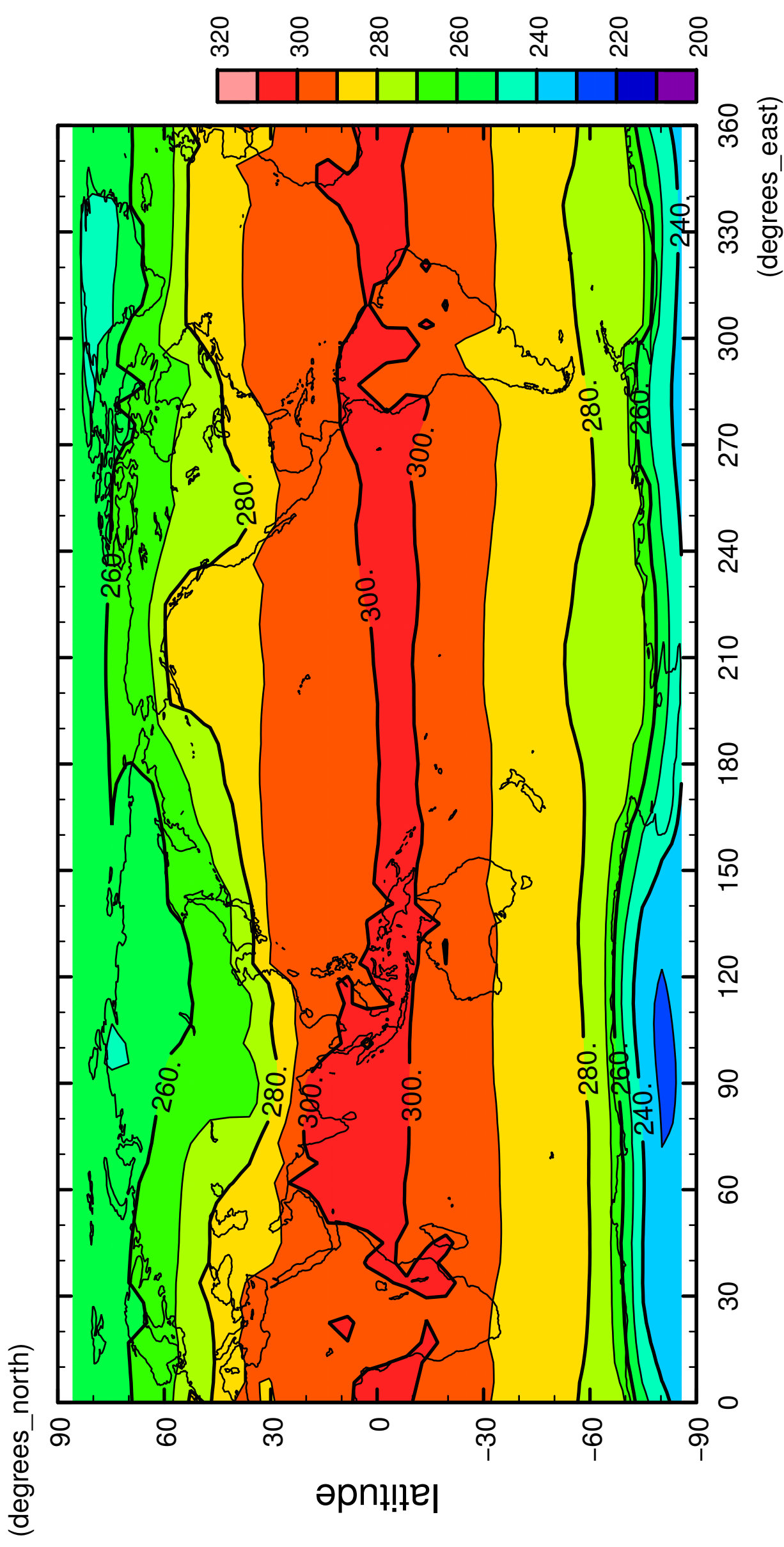


longitude

CONTOUR INTERVAL = 1.000E+01

7/12

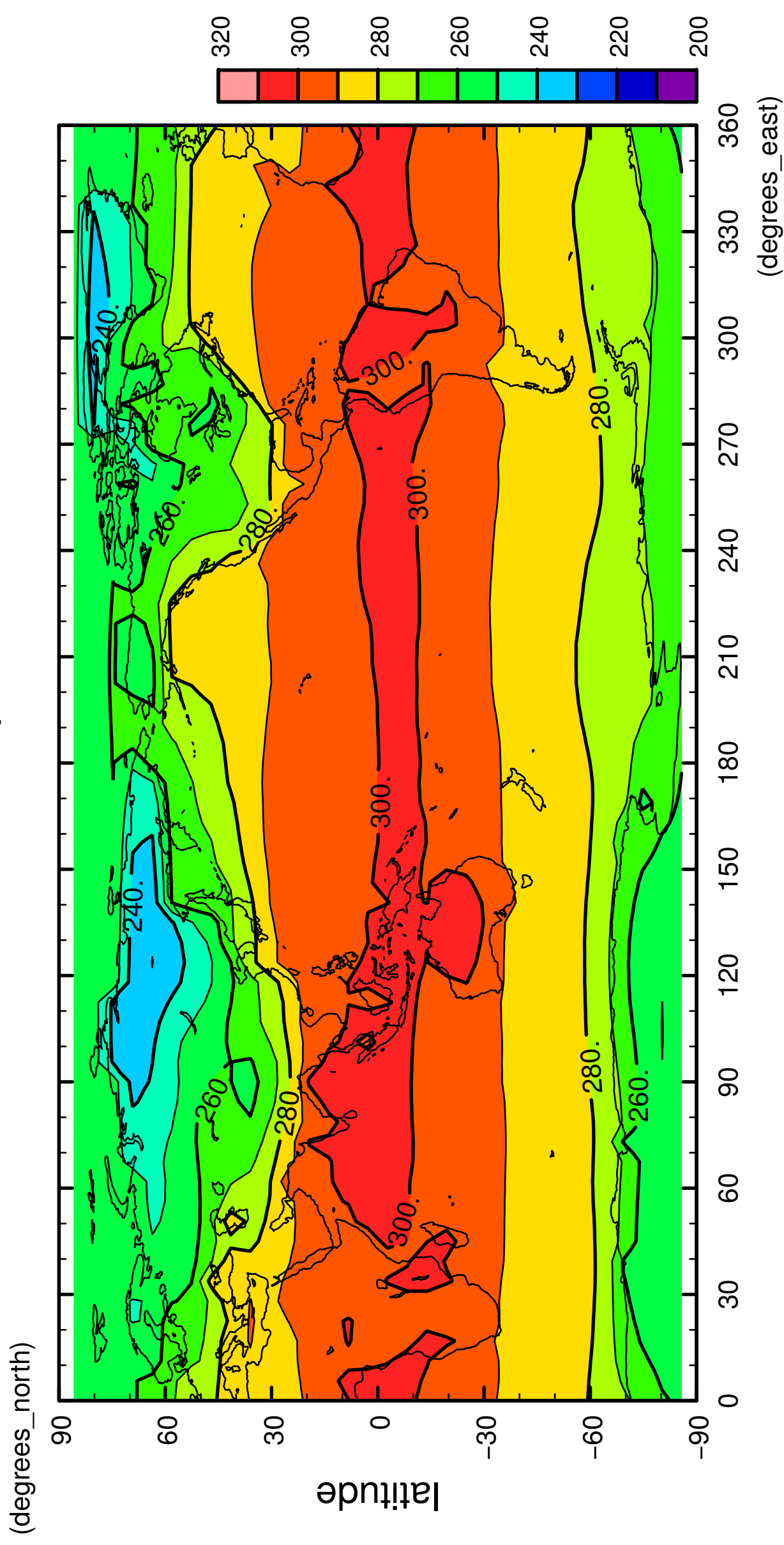
# surface temperature



longitude  
CONTOUR INTERVAL = 1.000E+01

8/12

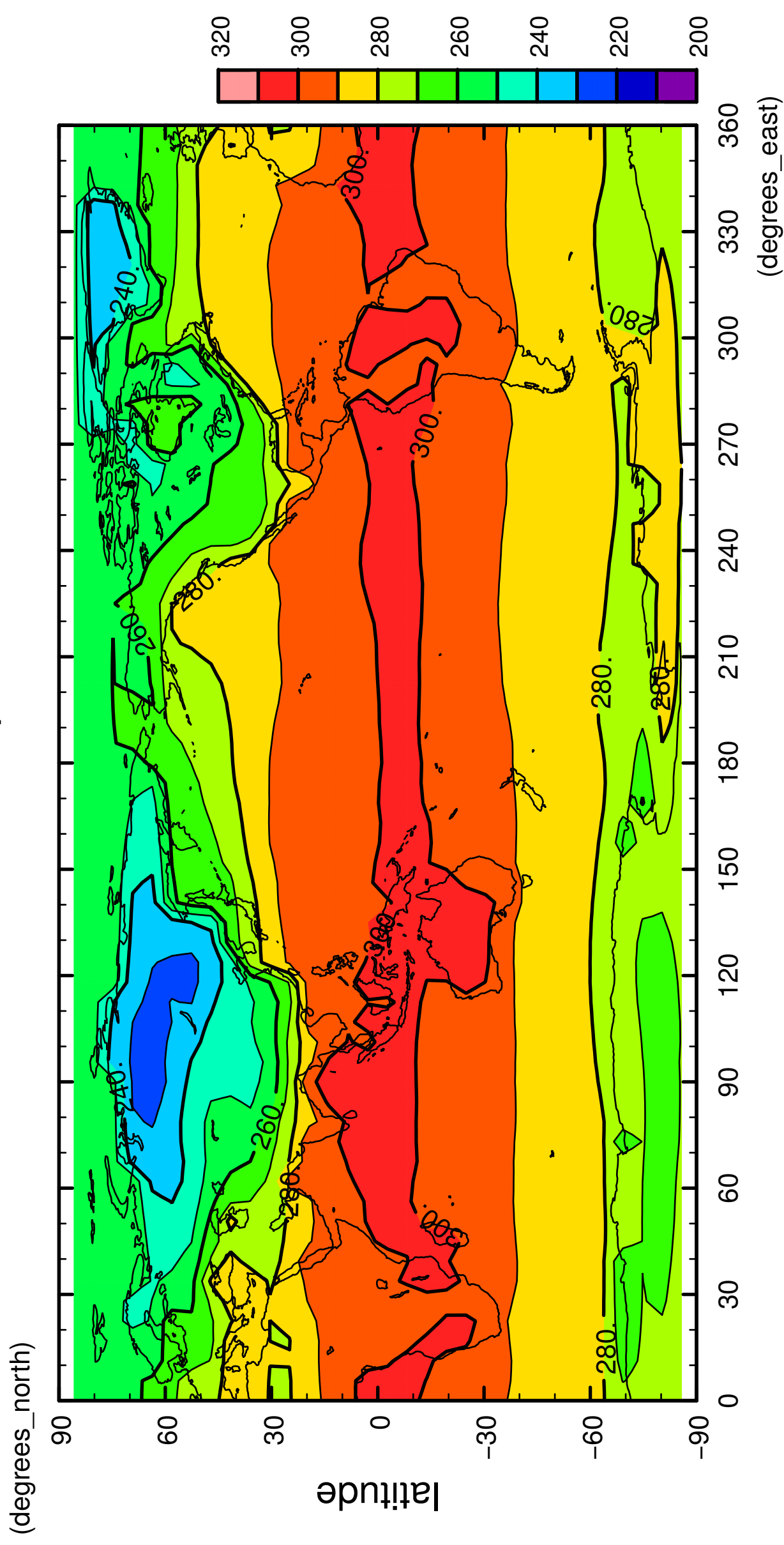
# surface temperature





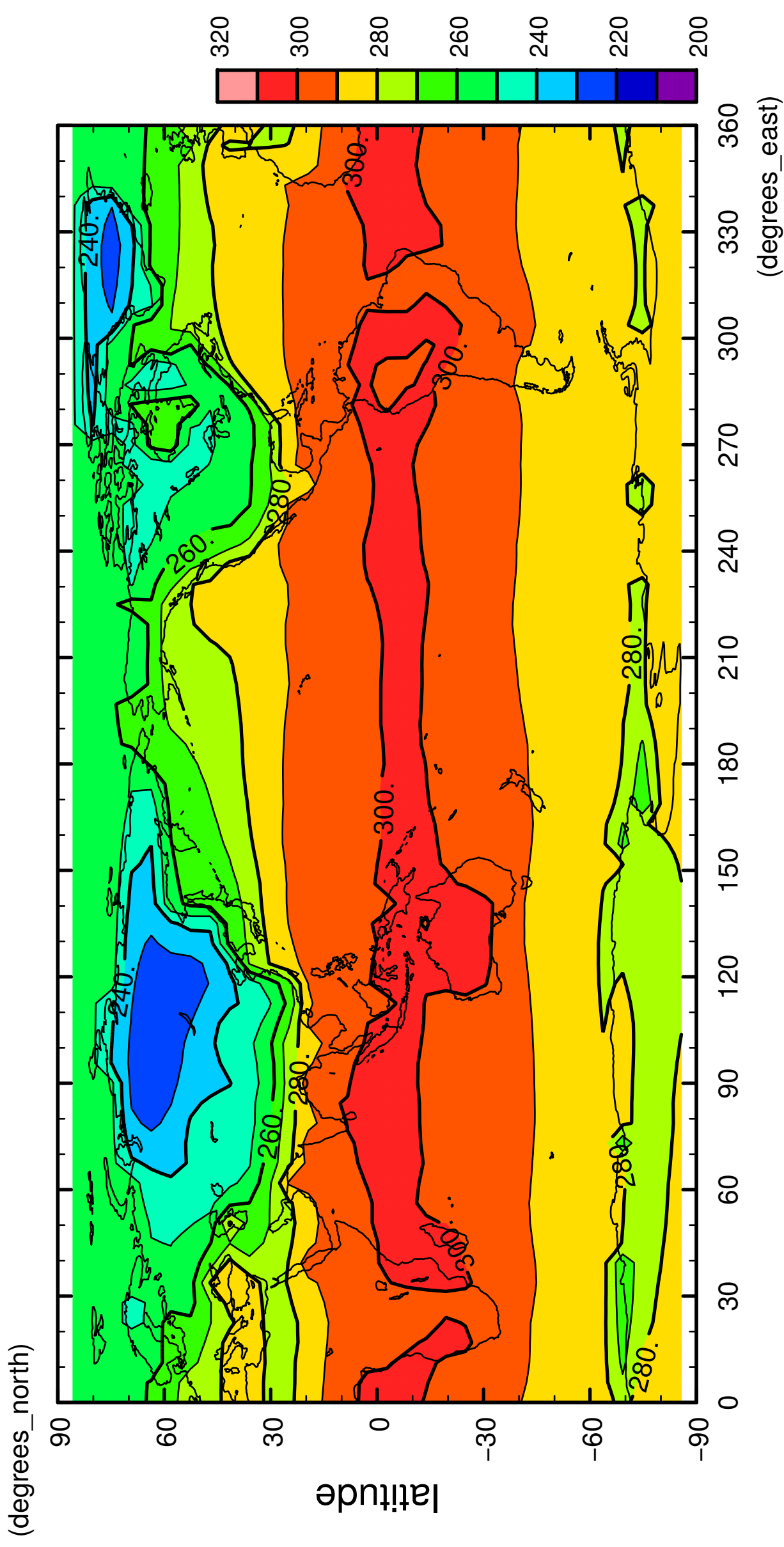
9/12

# surface temperature



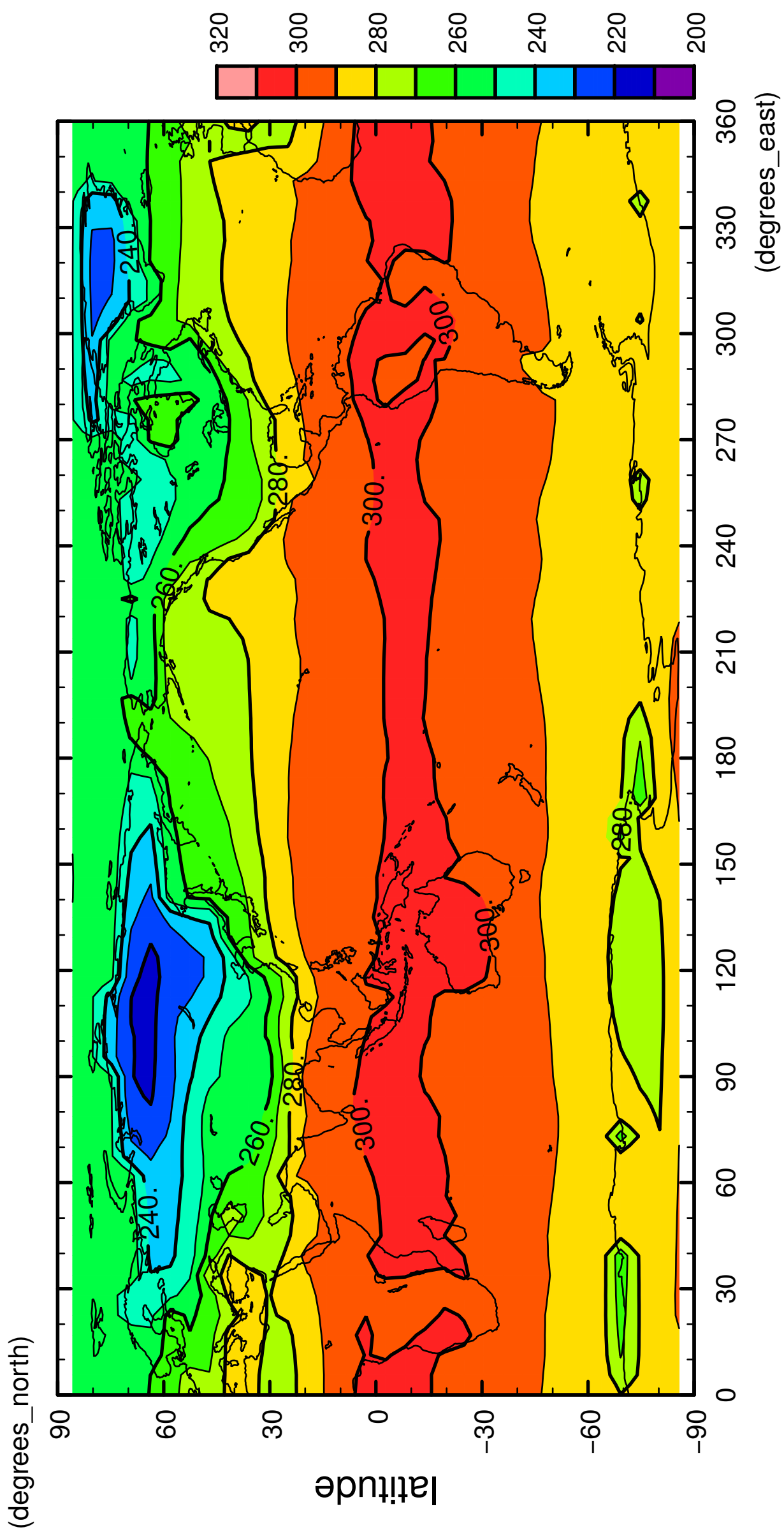
10/12

# surface temperature



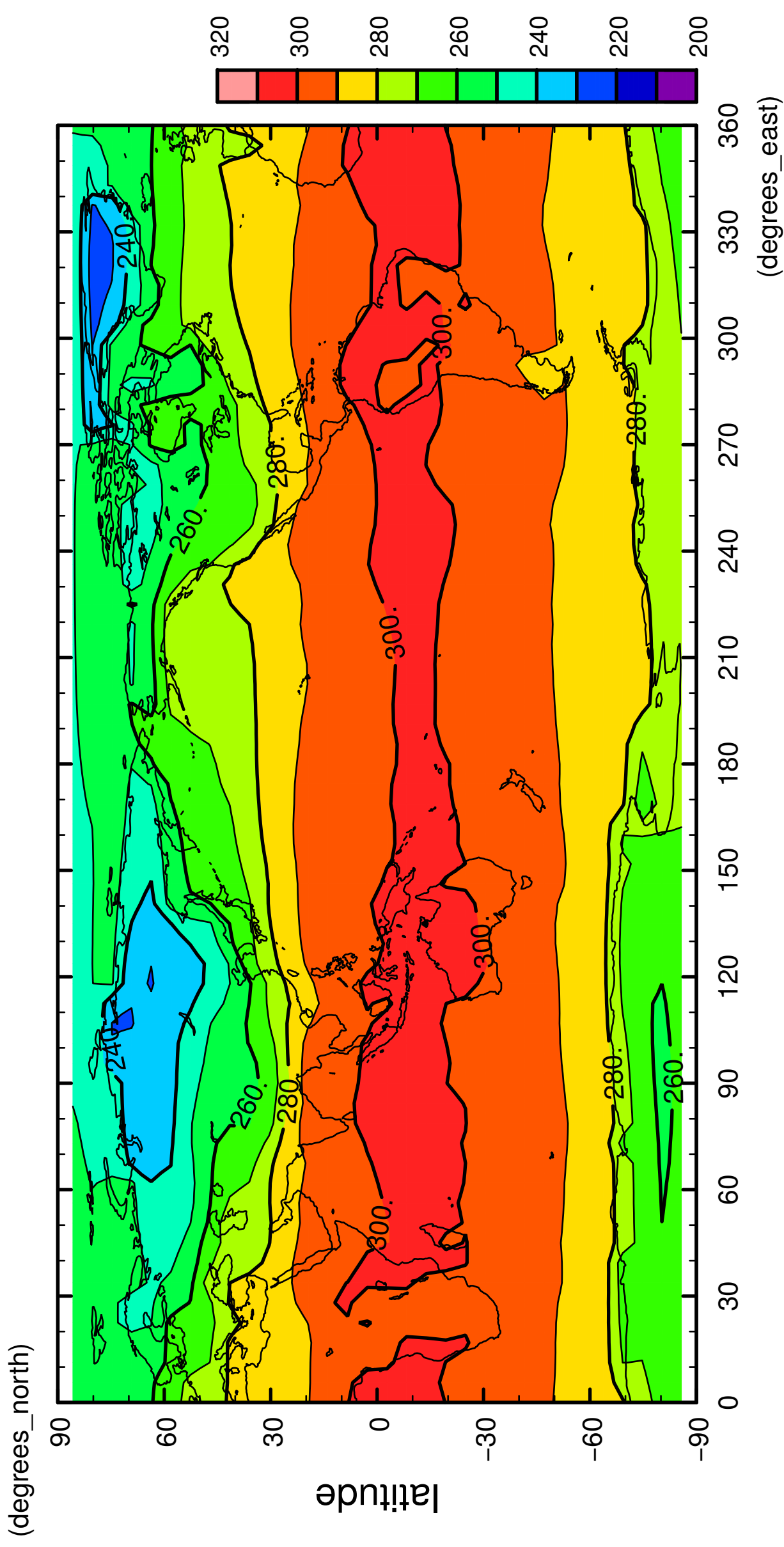
11/12

# surface temperature



12/12

# surface temperature



longitude  
CONTOUR INTERVAL = 1.000E+01