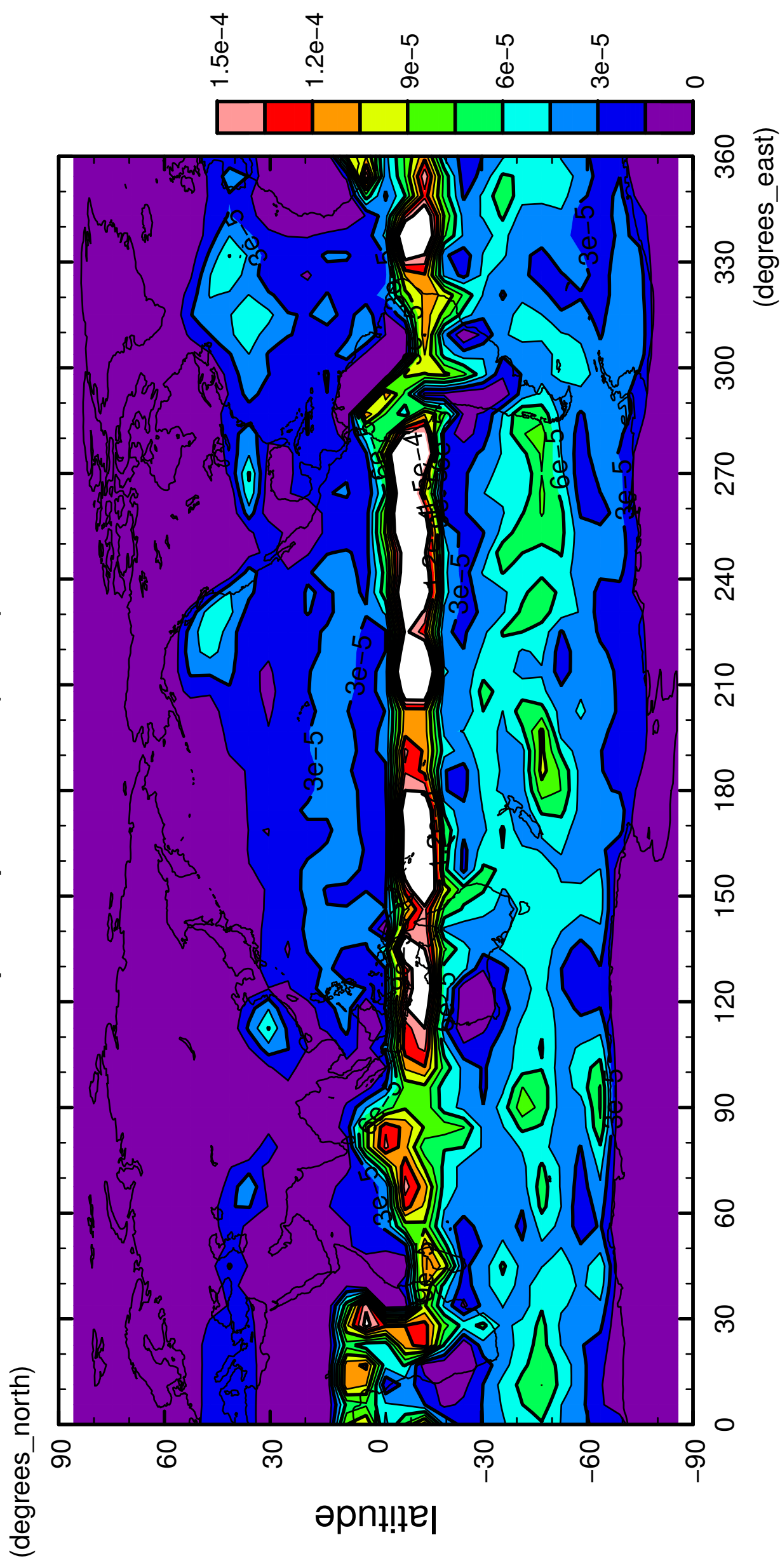


1/12

precipitation (rain)

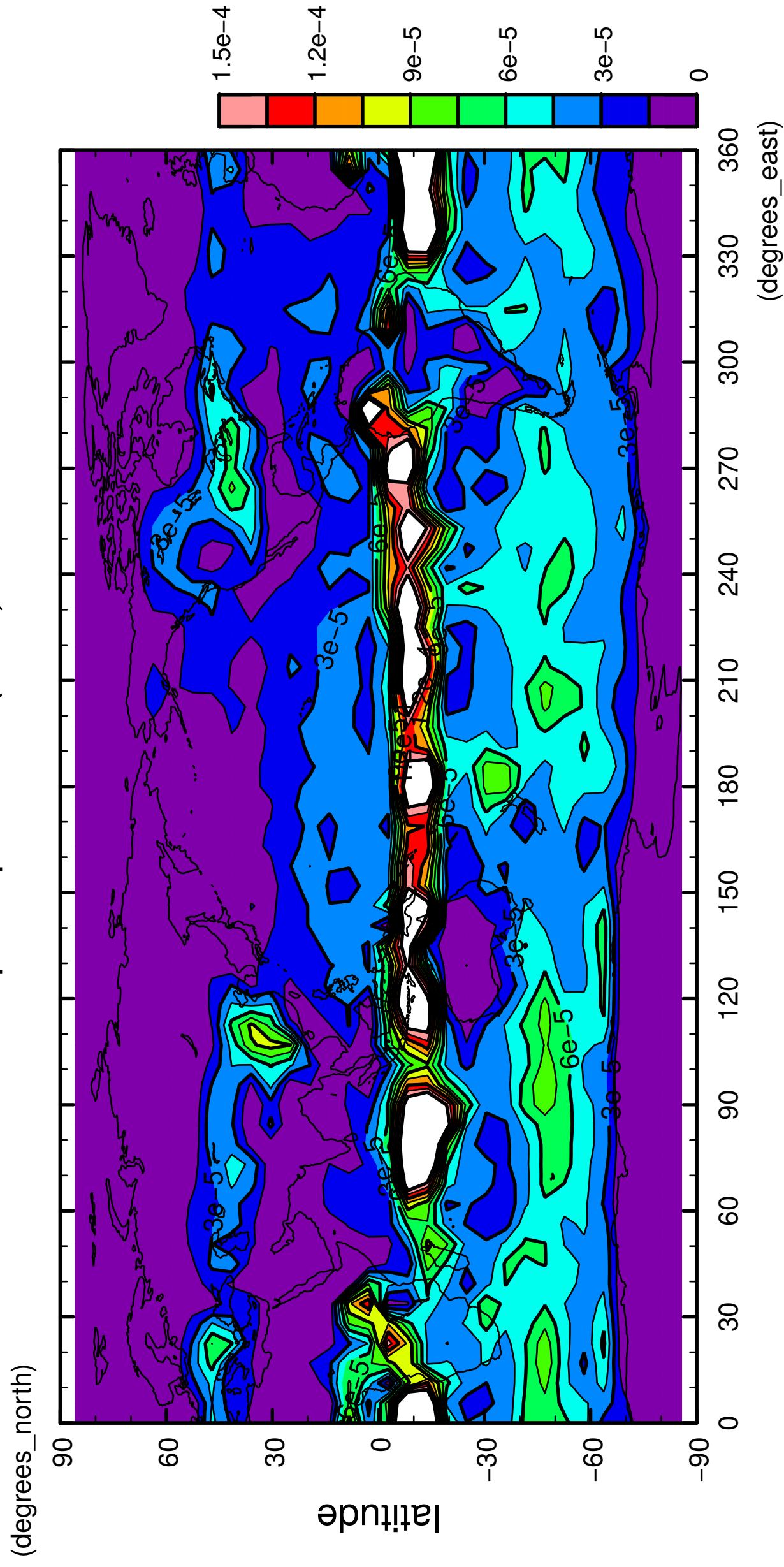


longitude

CONTOUR INTERVAL = 1.500E-05

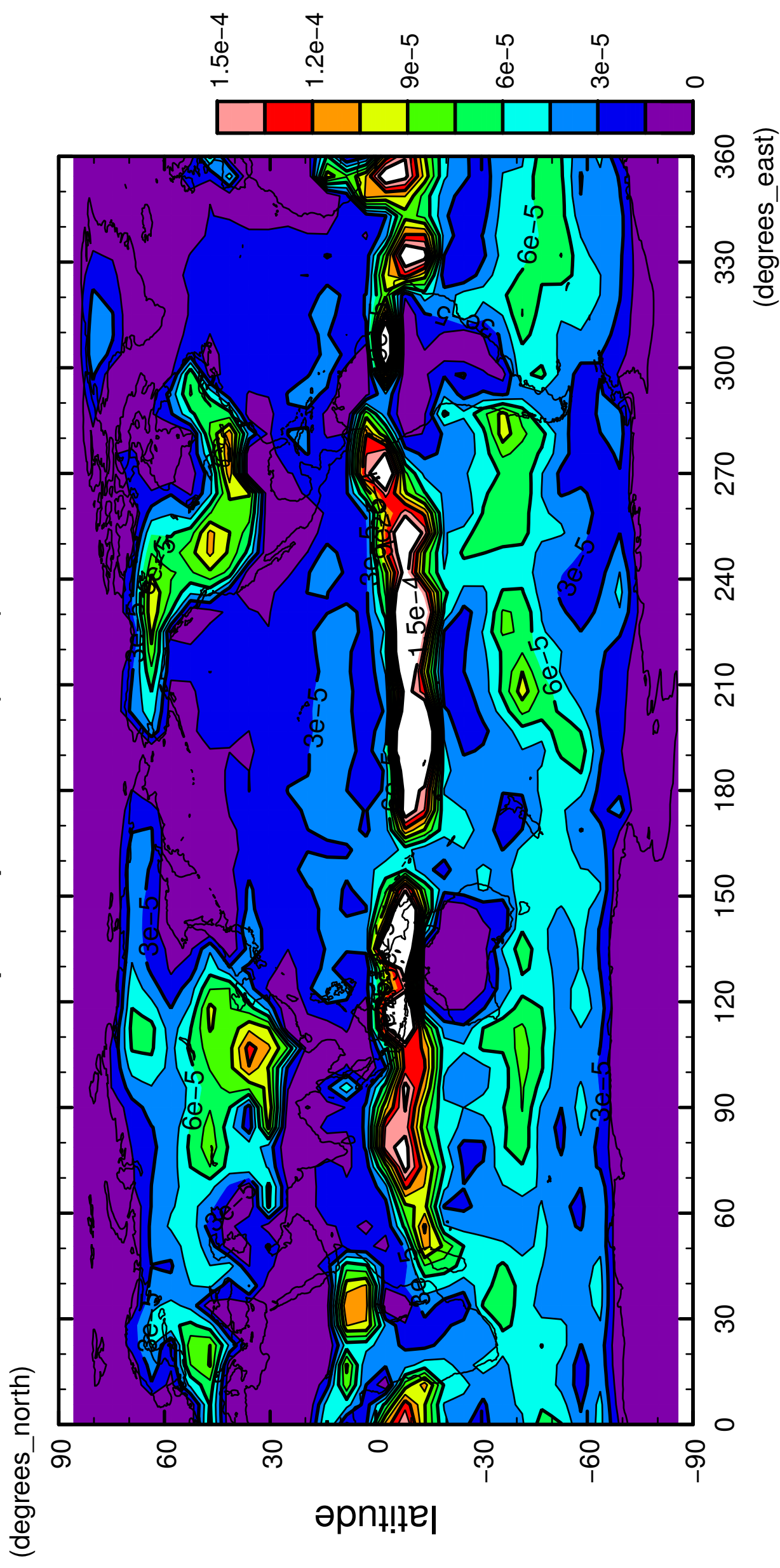
2/12

precipitation (rain)



3/12

precipitation (rain)

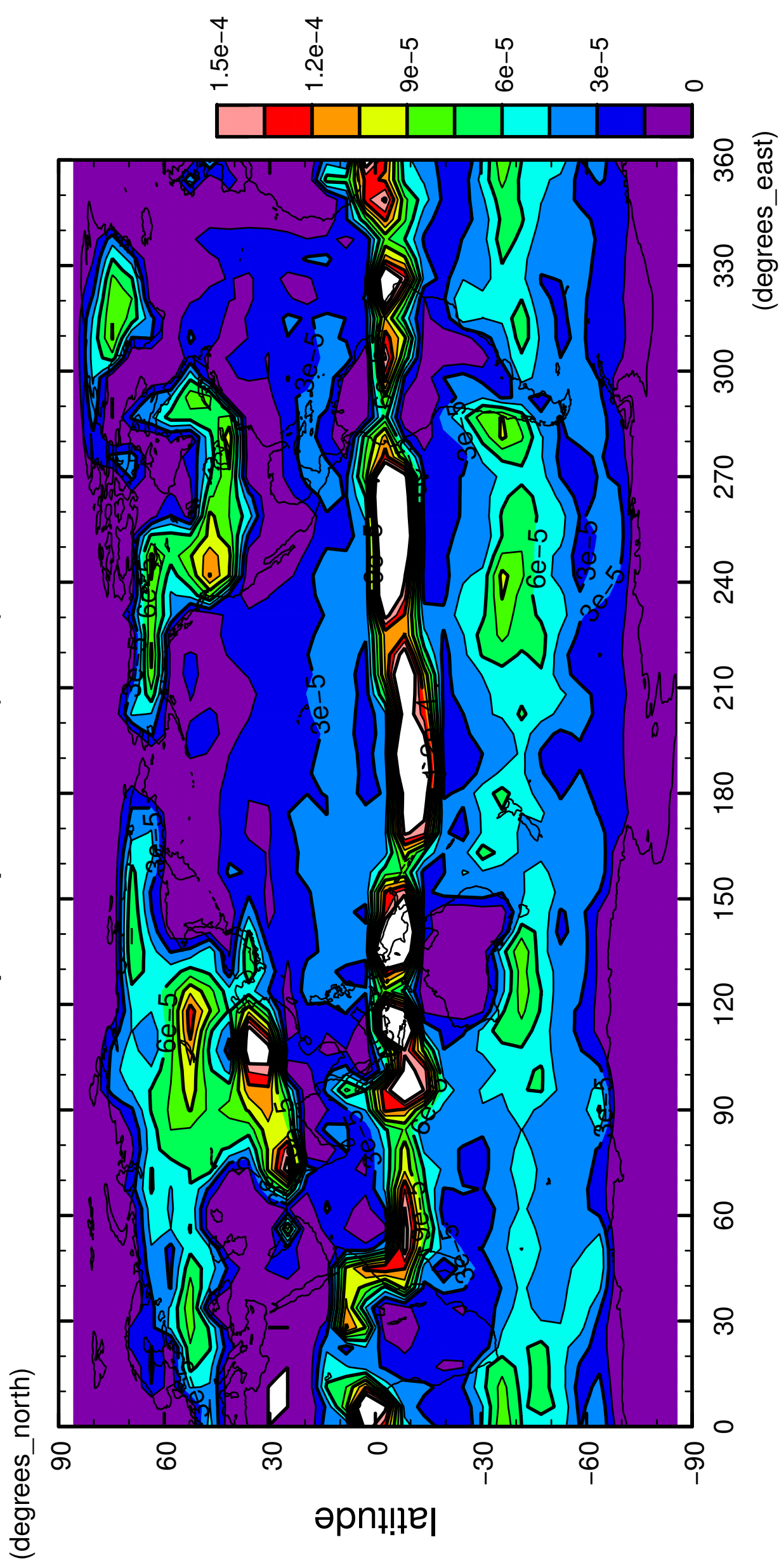


longitude

CONTOUR INTERVAL = 1.500E-05

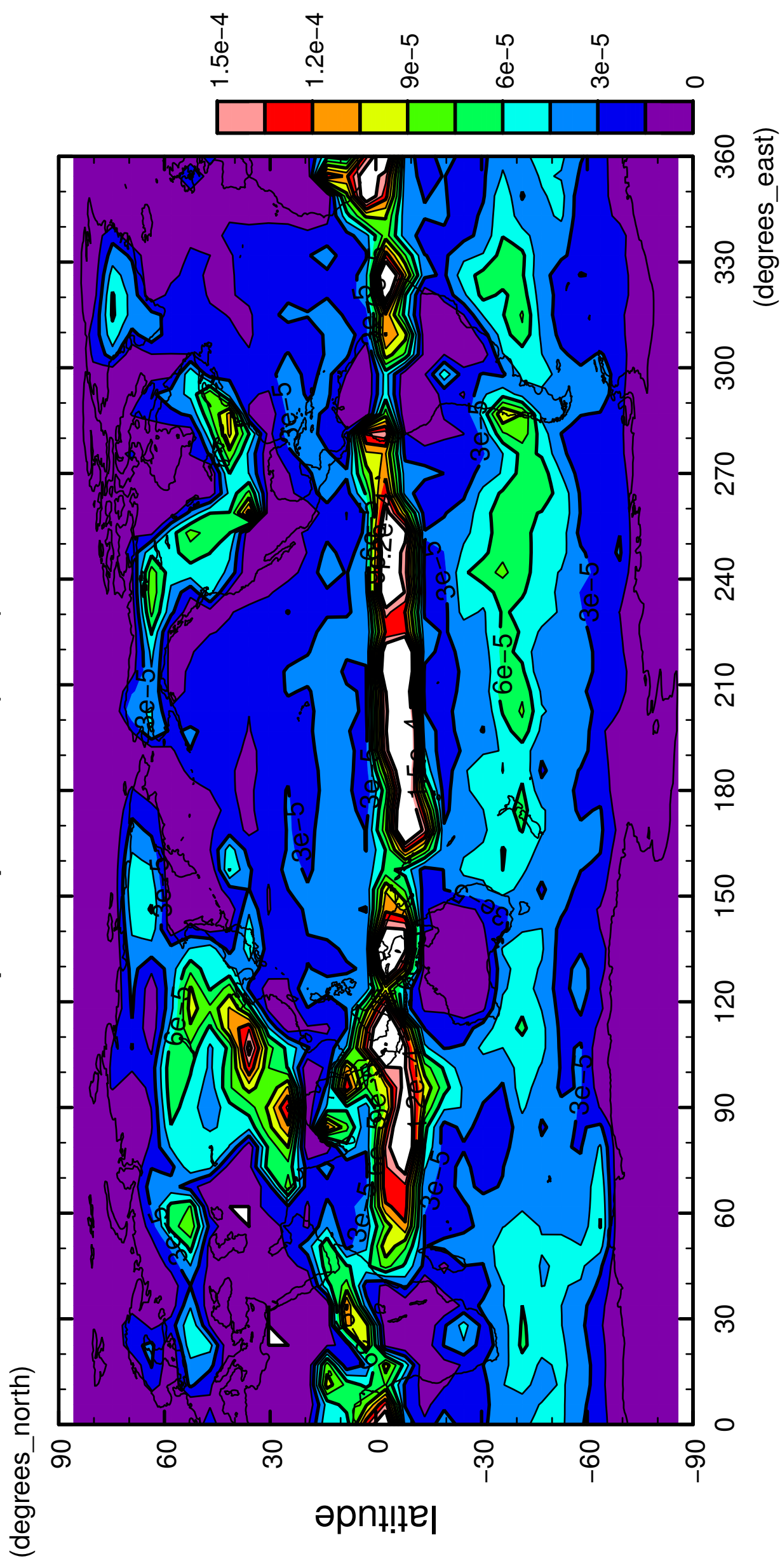
4/12

precipitation (rain)



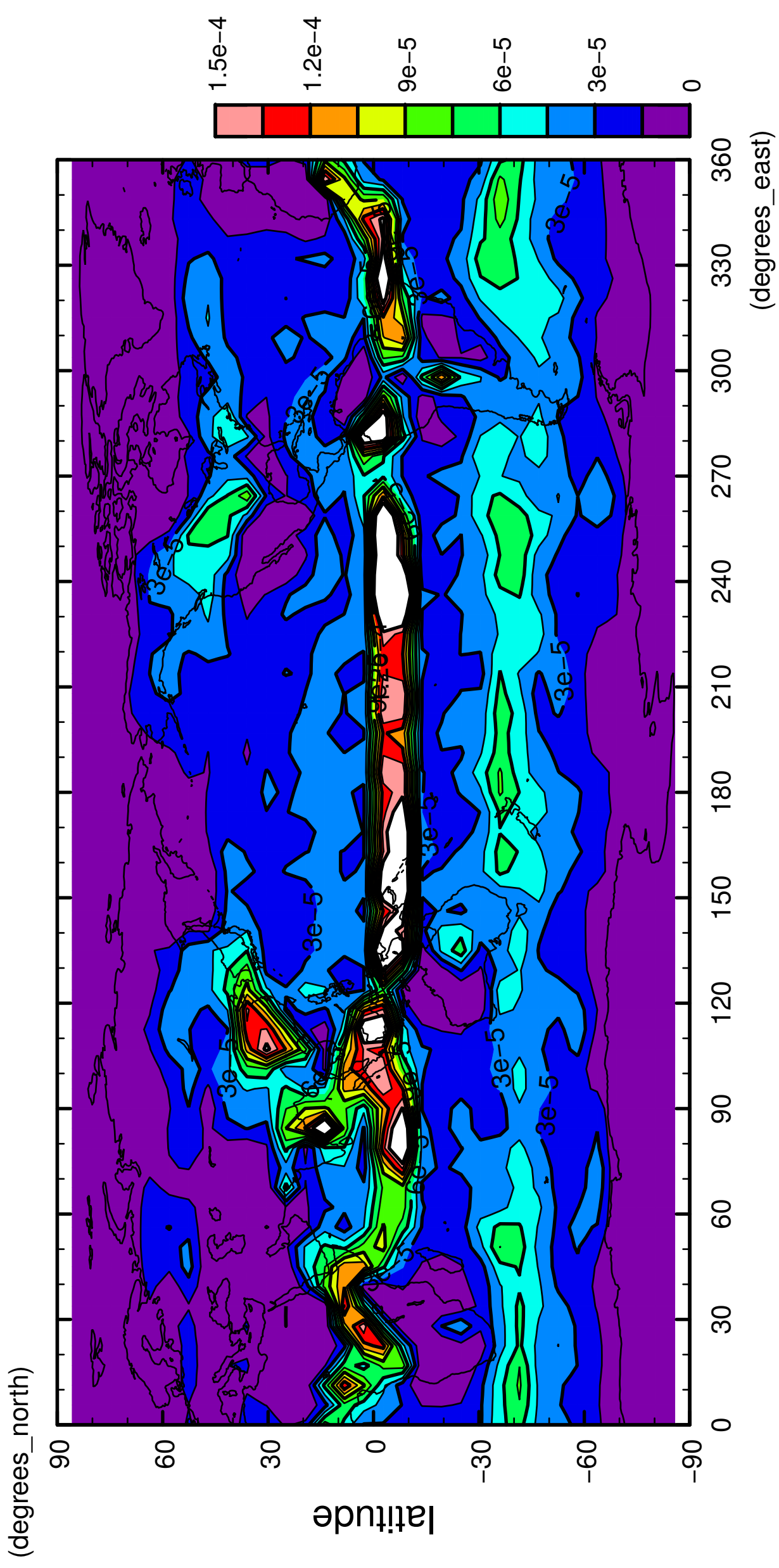
5/12

precipitation (rain)



6/12

precipitation (rain)

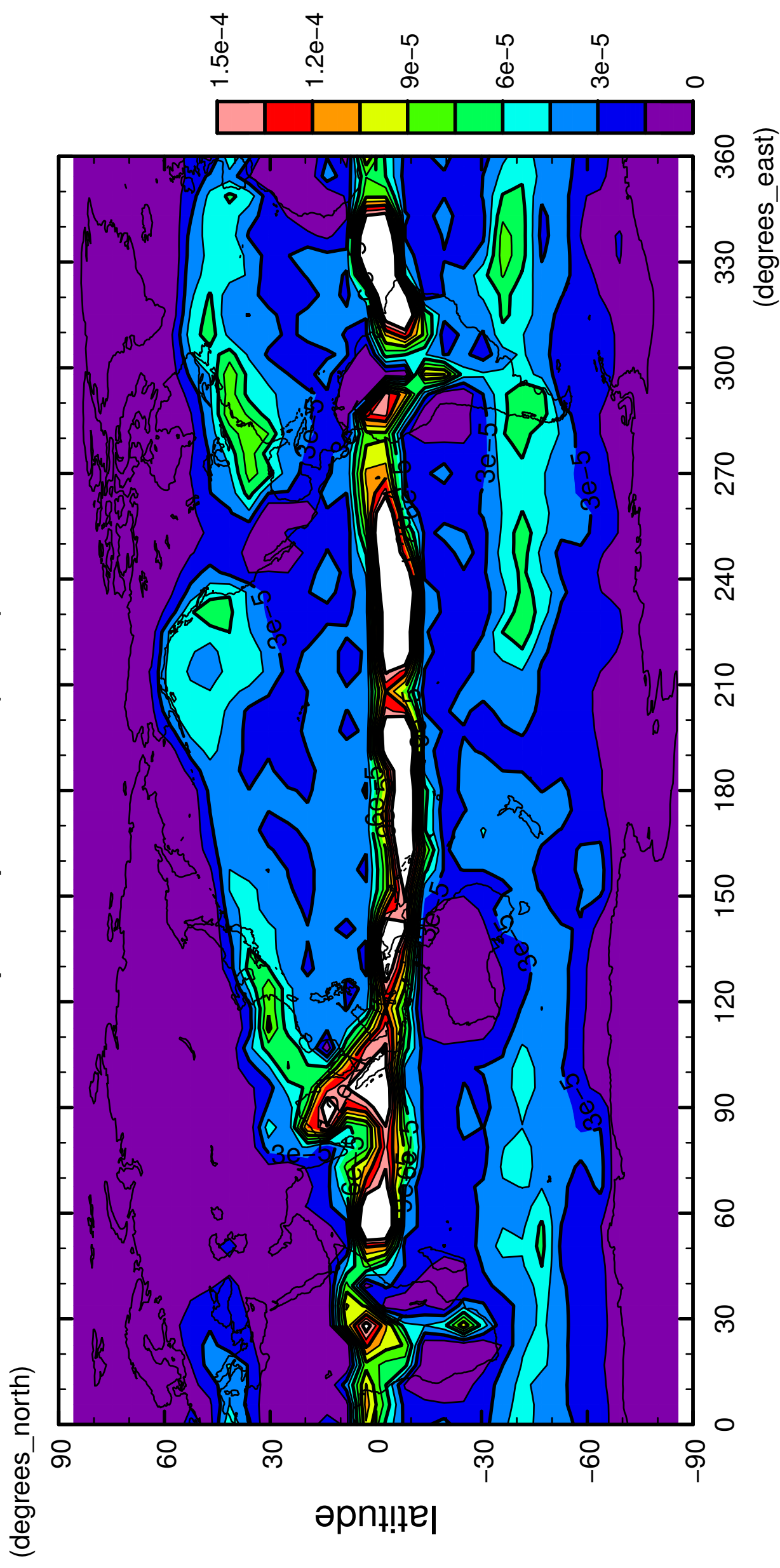


longitude

CONTOUR INTERVAL = 1.500×10^{-5}

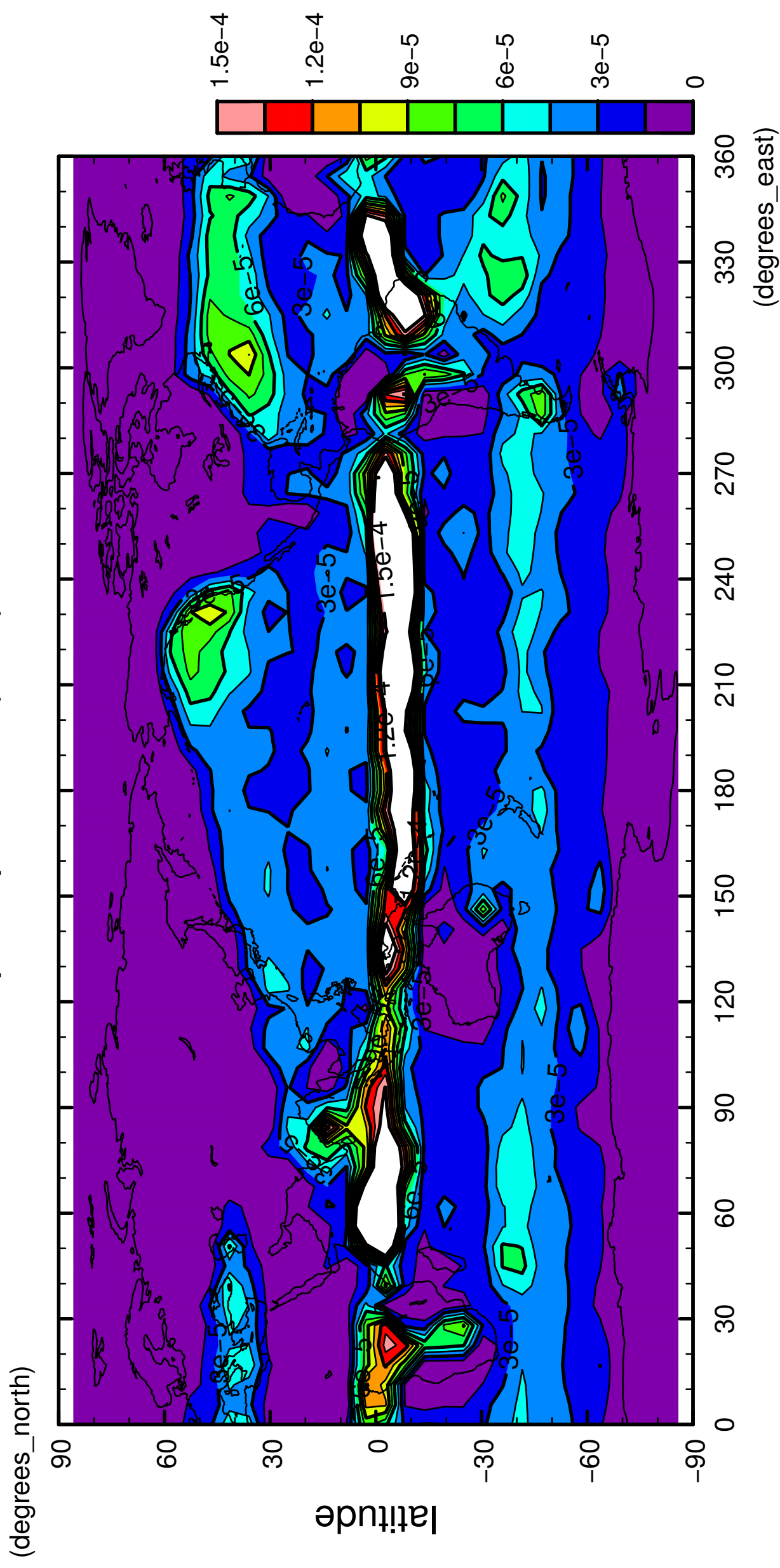
7/12

precipitation (rain)



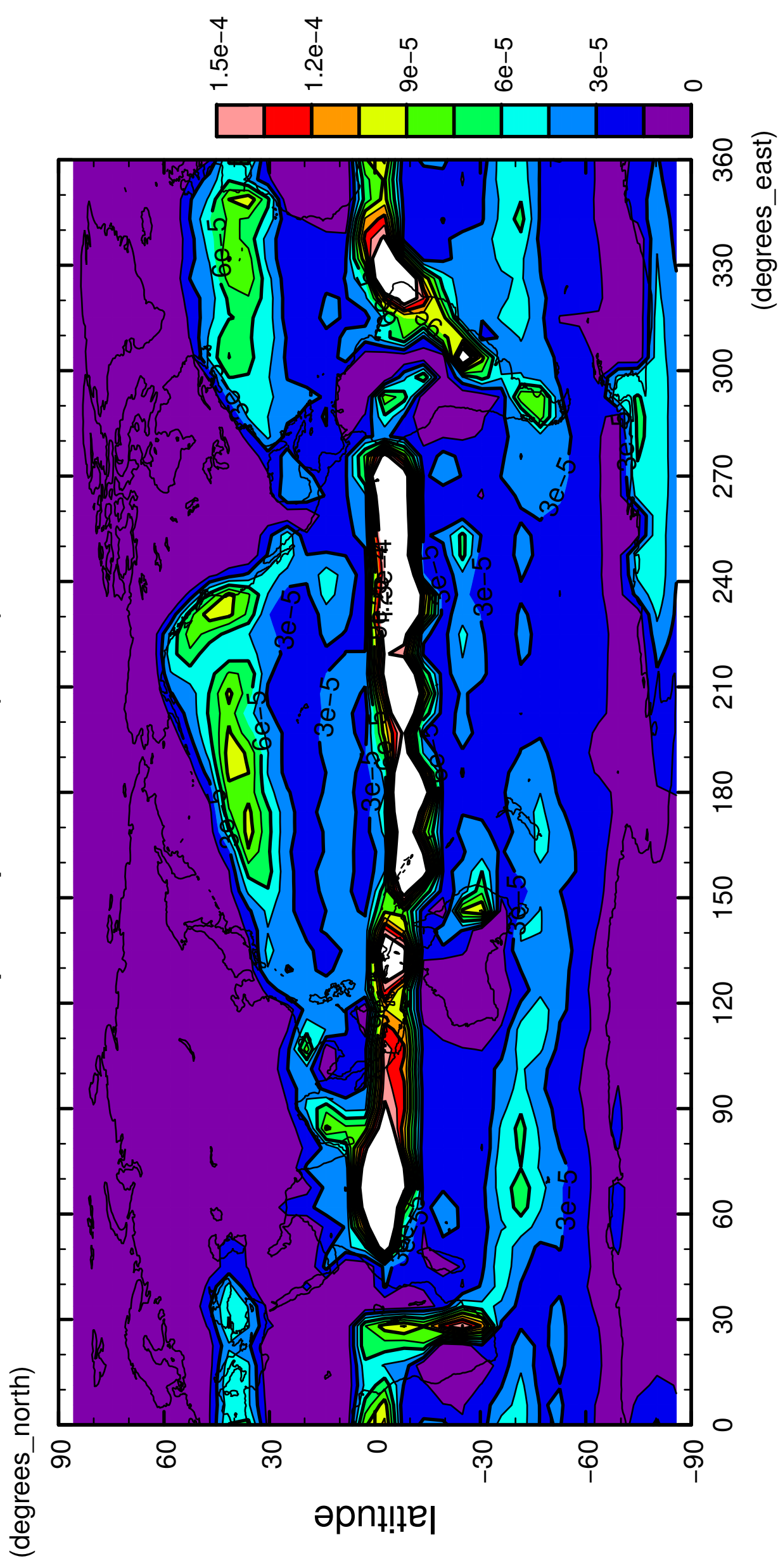
8/12

precipitation (rain)



9/12

precipitation (rain)

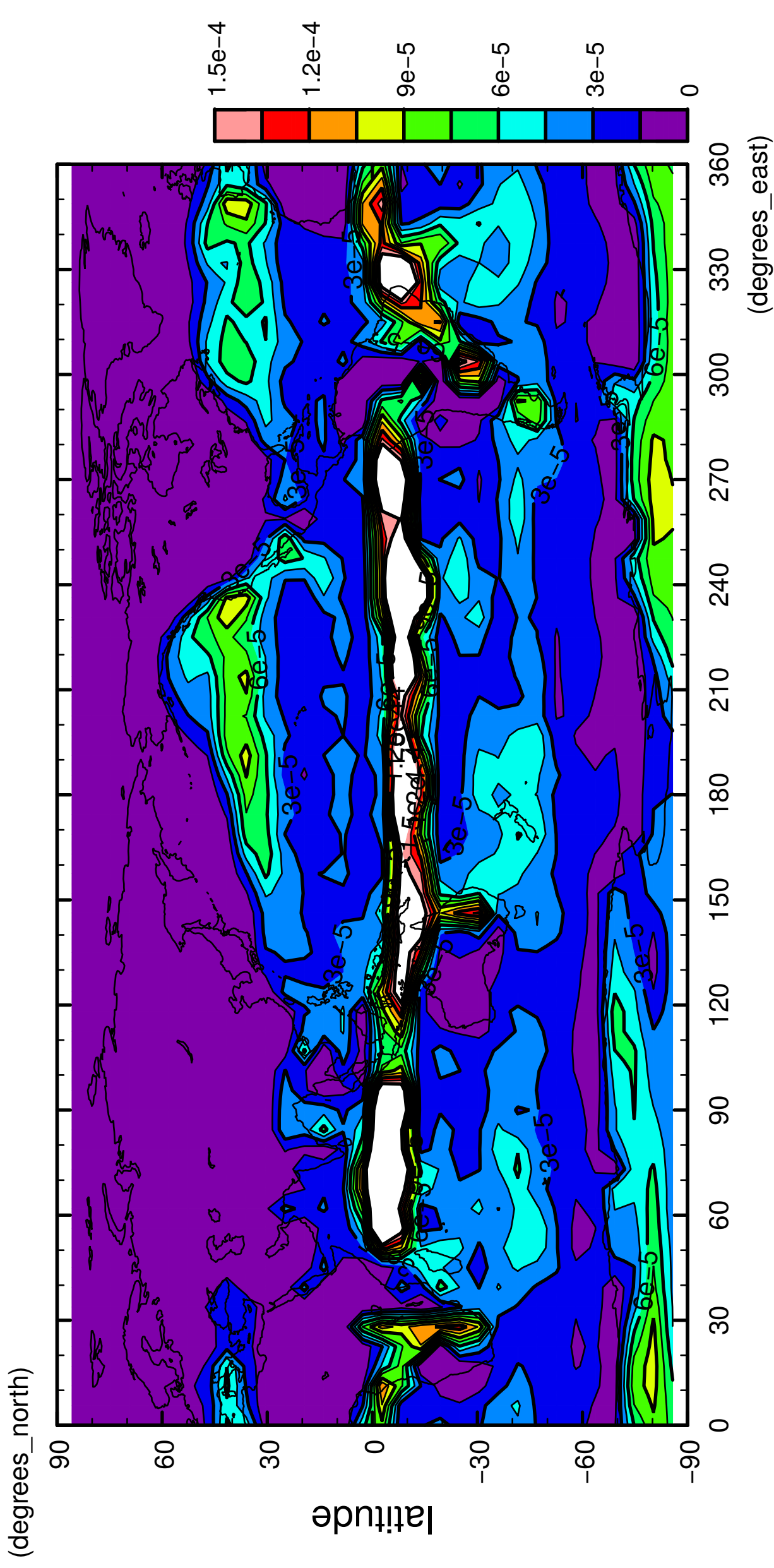


longitude

CONTOUR INTERVAL = 1.500E-05

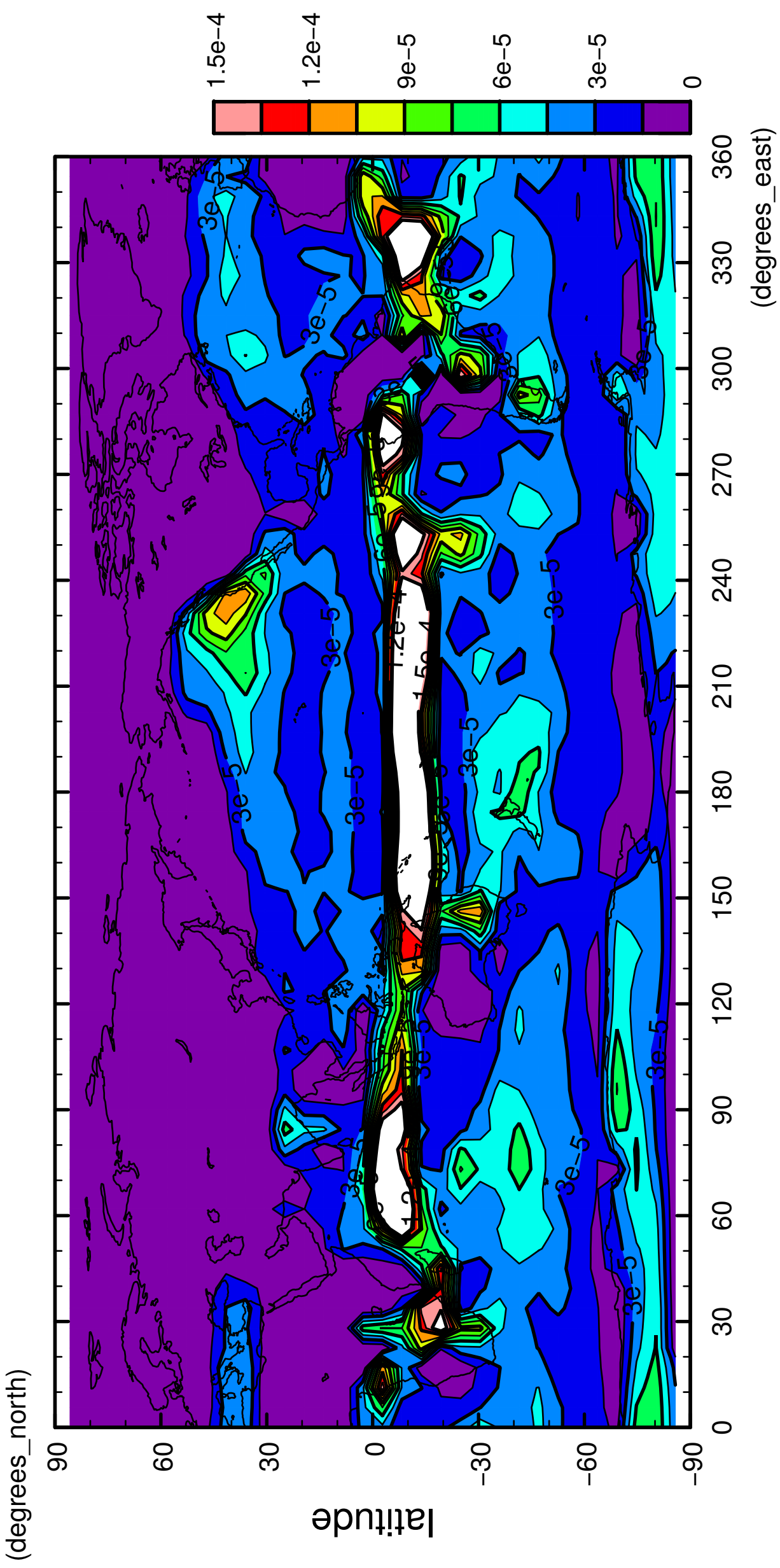
10/12

precipitation (rain)



11/12

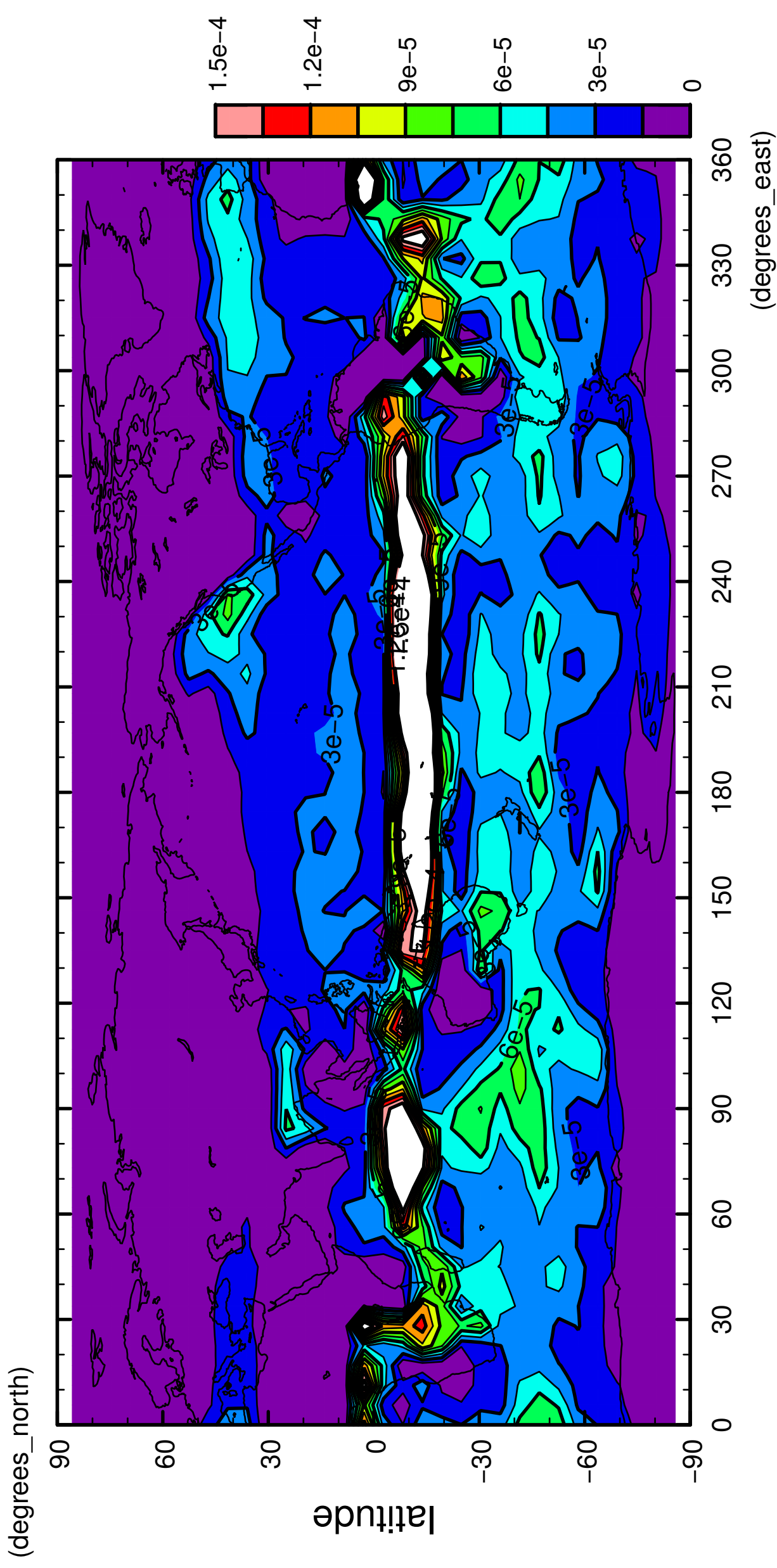
precipitation (rain)



longitude
CONTOUR INTERVAL = 1.500E-05

12/12

precipitation (rain)



longitude

CONTOUR INTERVAL = $1.500E-05$