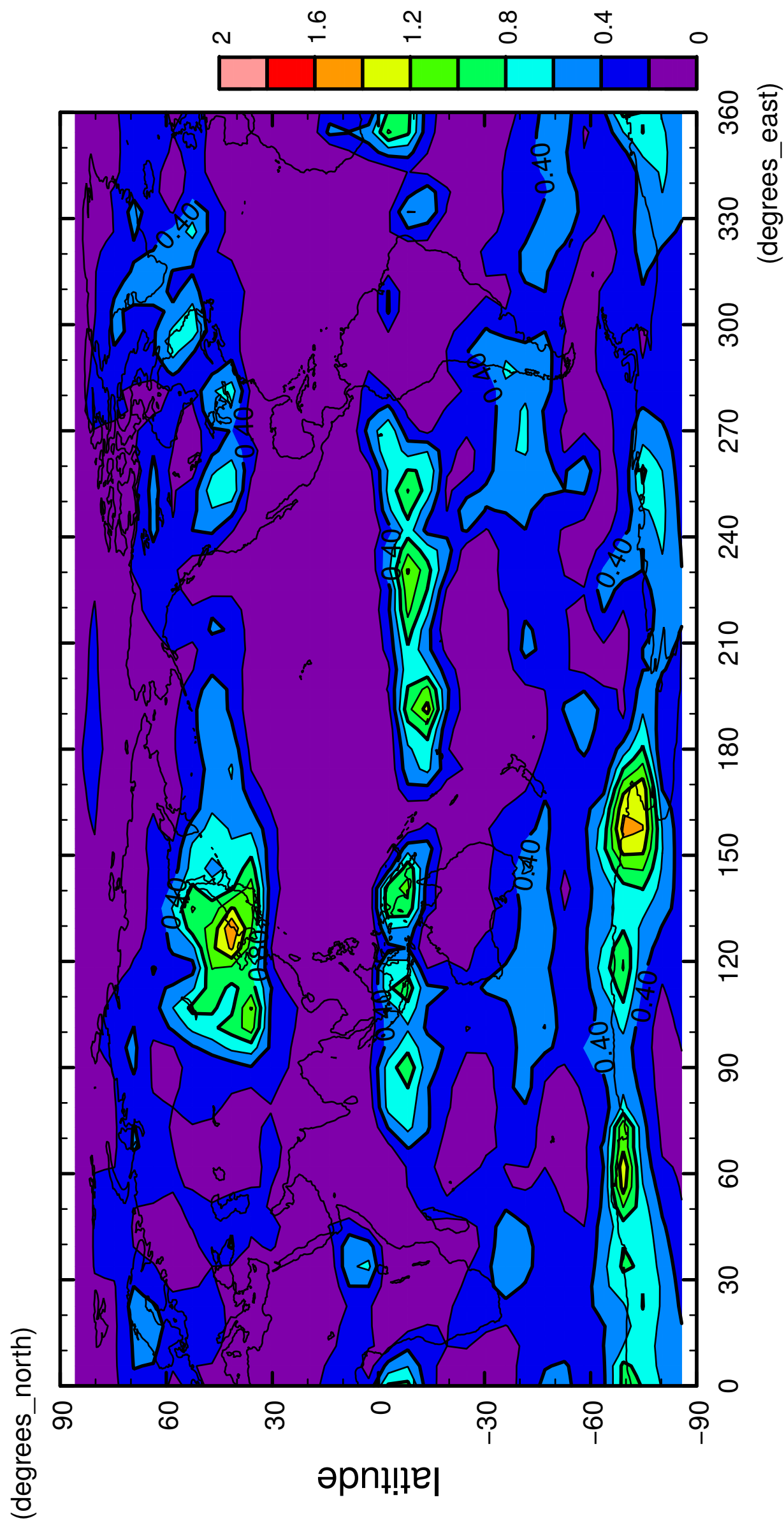






3/12

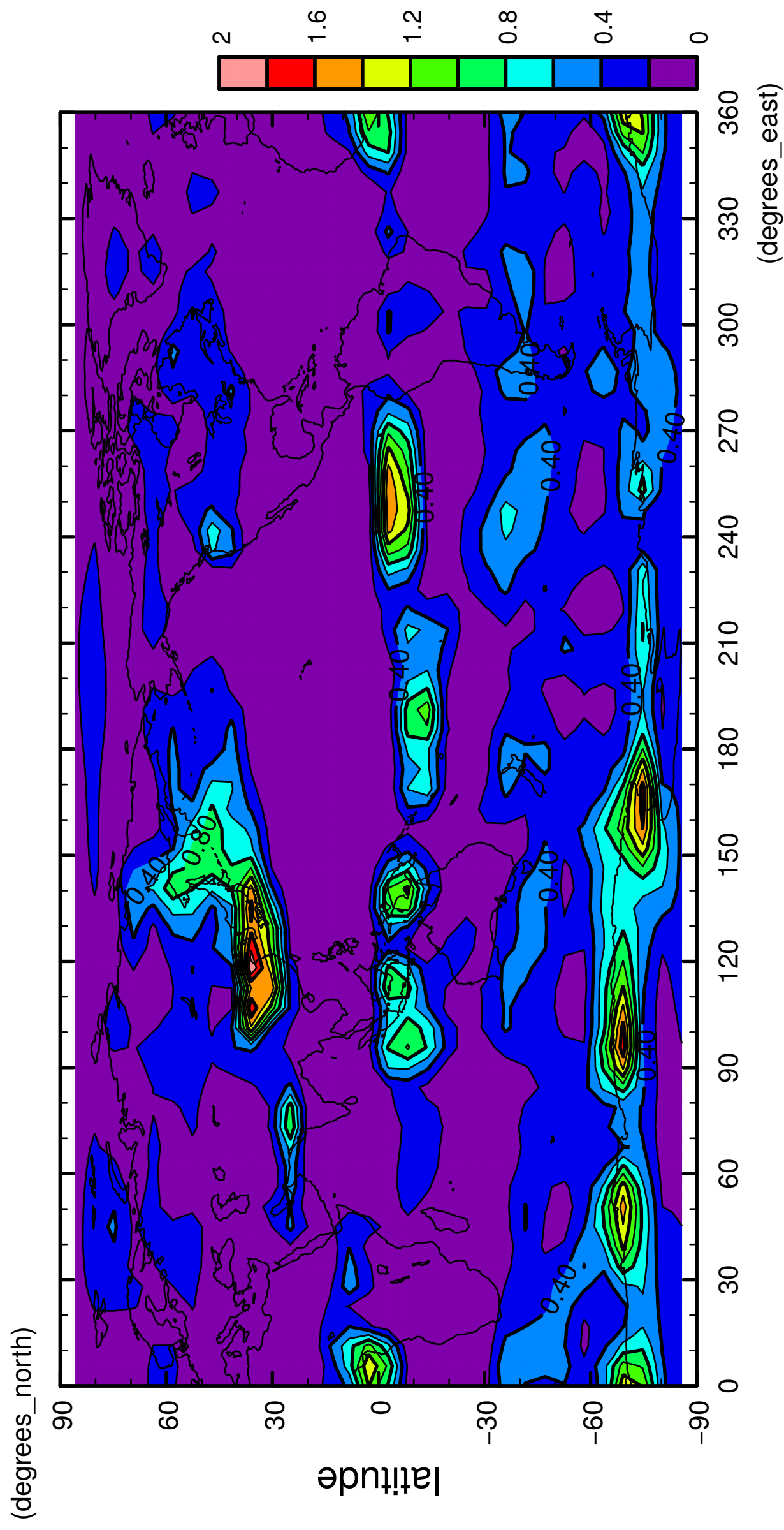
QH2OSol



longitude  
CONTOUR INTERVAL = 2.000E-01

4/12

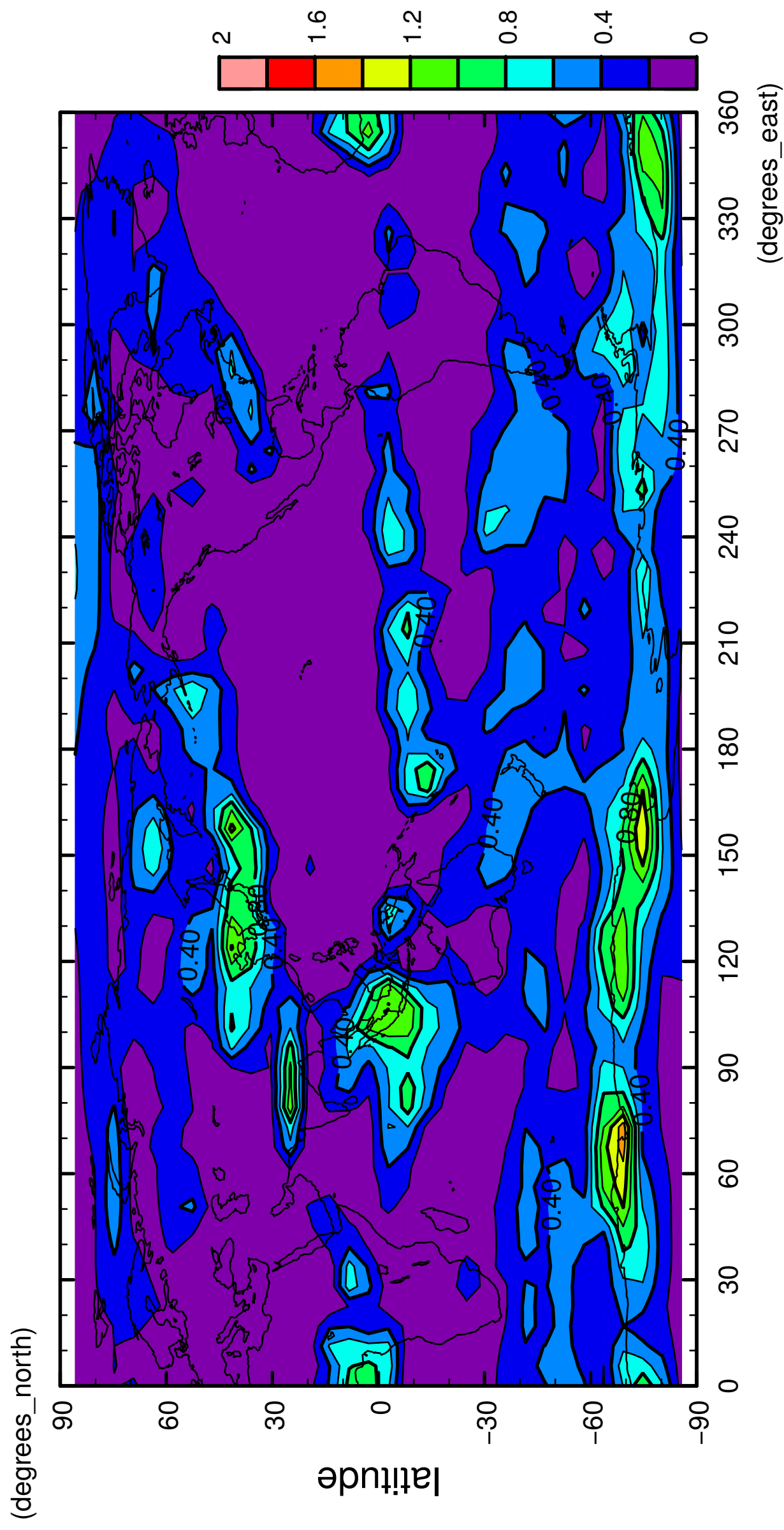
QH2OSol



longitude  
CONTOUR INTERVAL = 2.000E-01

5/12

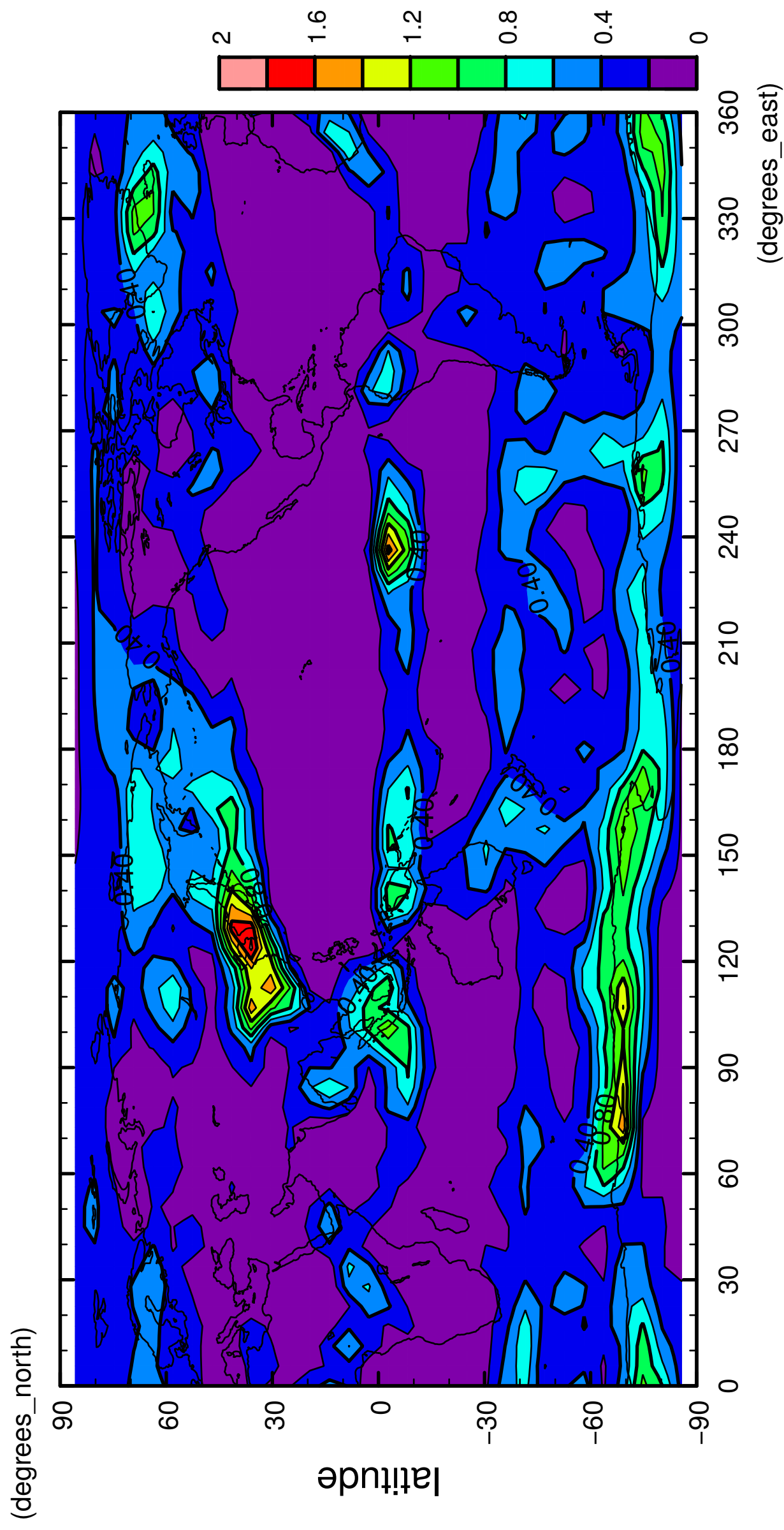
QH2OSol



longitude  
CONTOUR INTERVAL = 2.000E-01

6/12

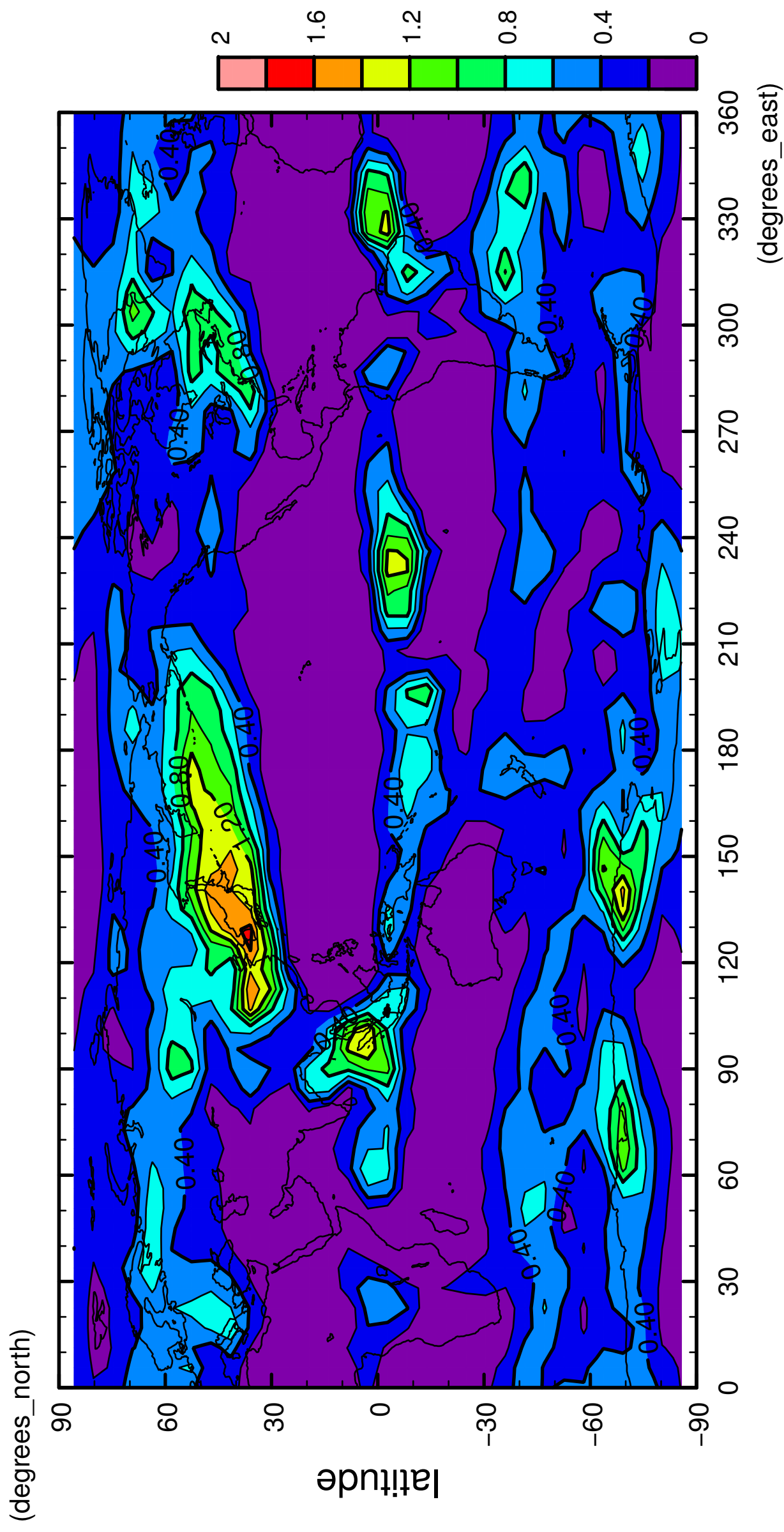
QH2OSol



longitude  
CONTOUR INTERVAL = 2.000E-01

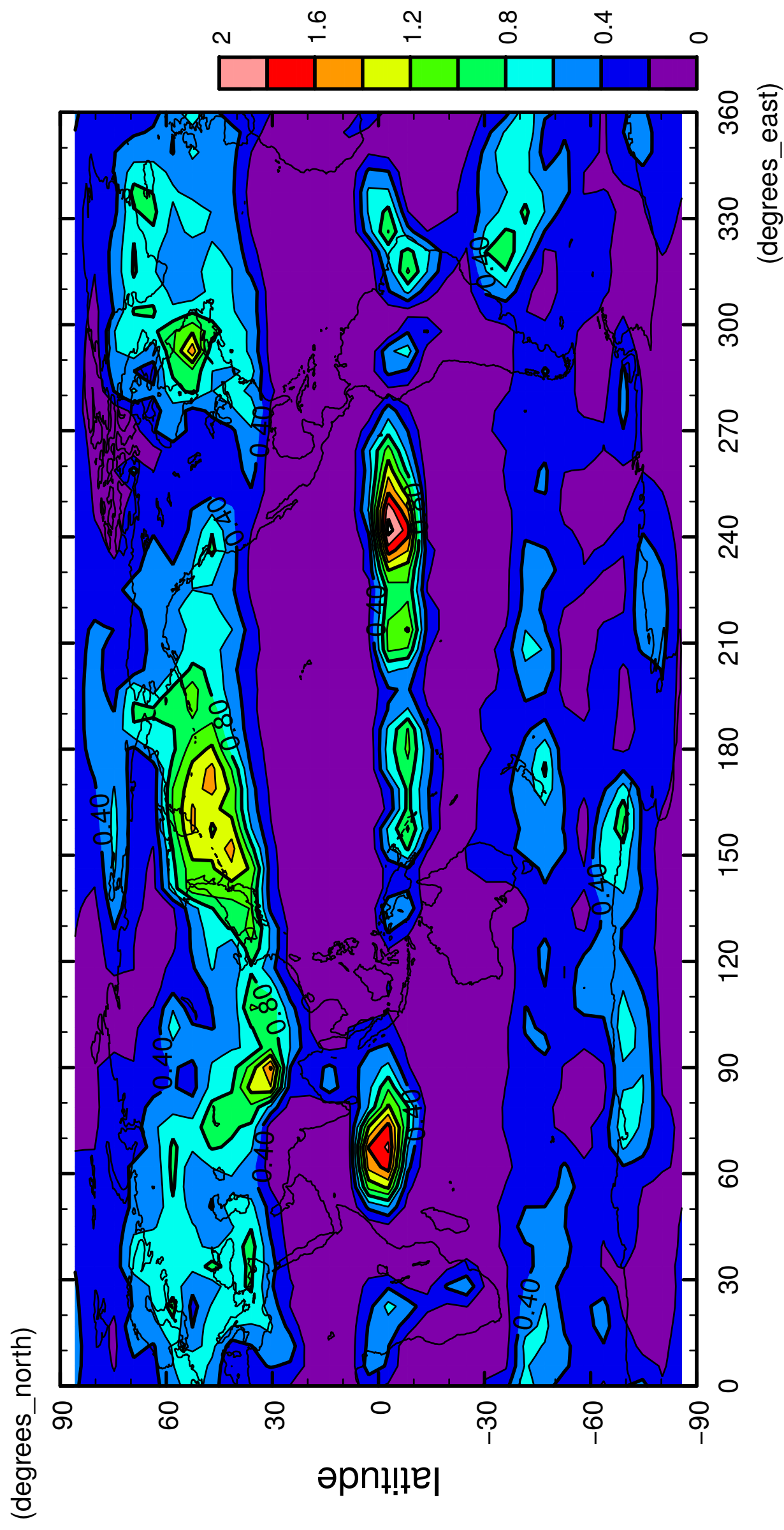
7/12

QH2OSol



8/12

QH2OSol

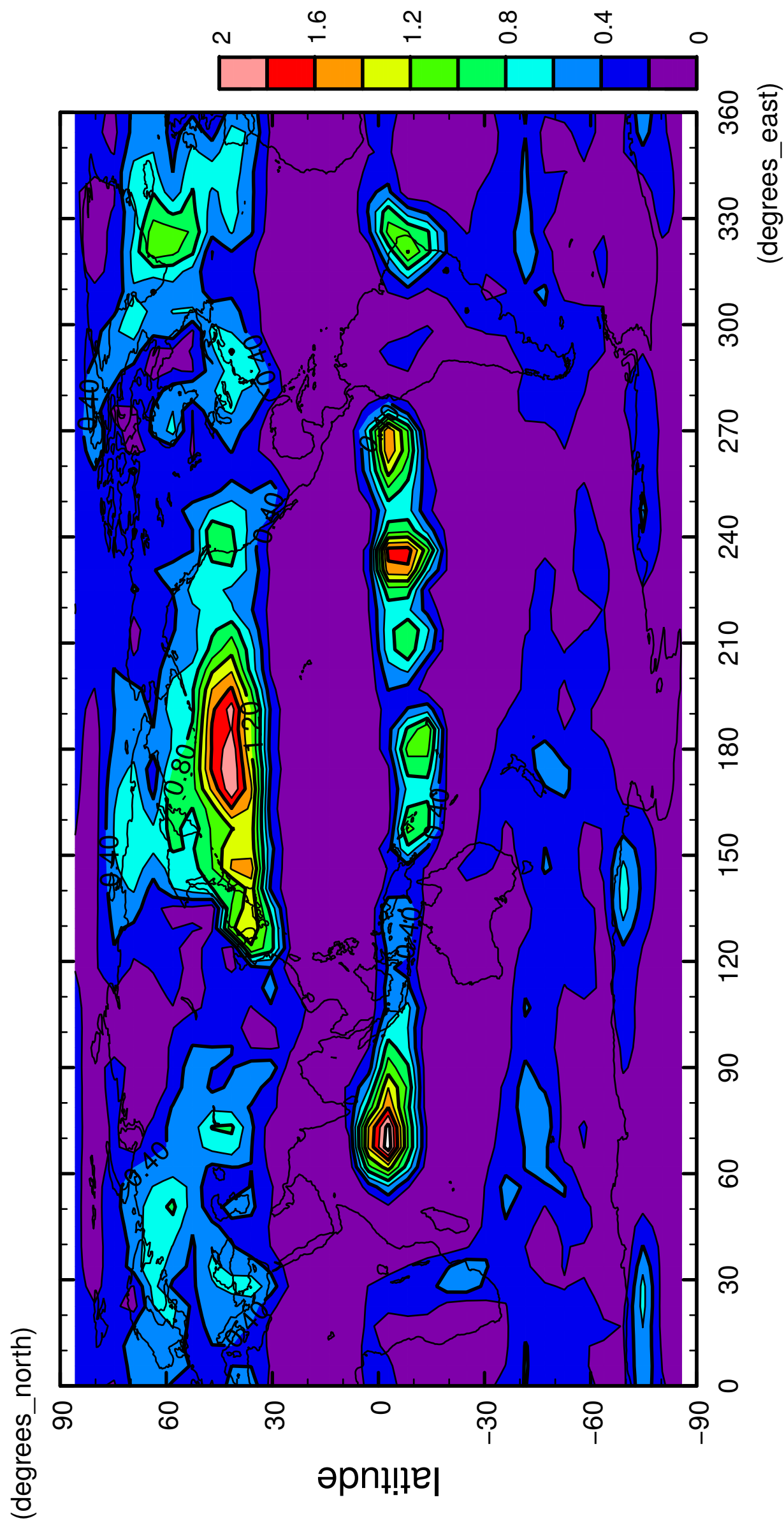


longitude  
CONTOUR INTERVAL = 2.000E-01



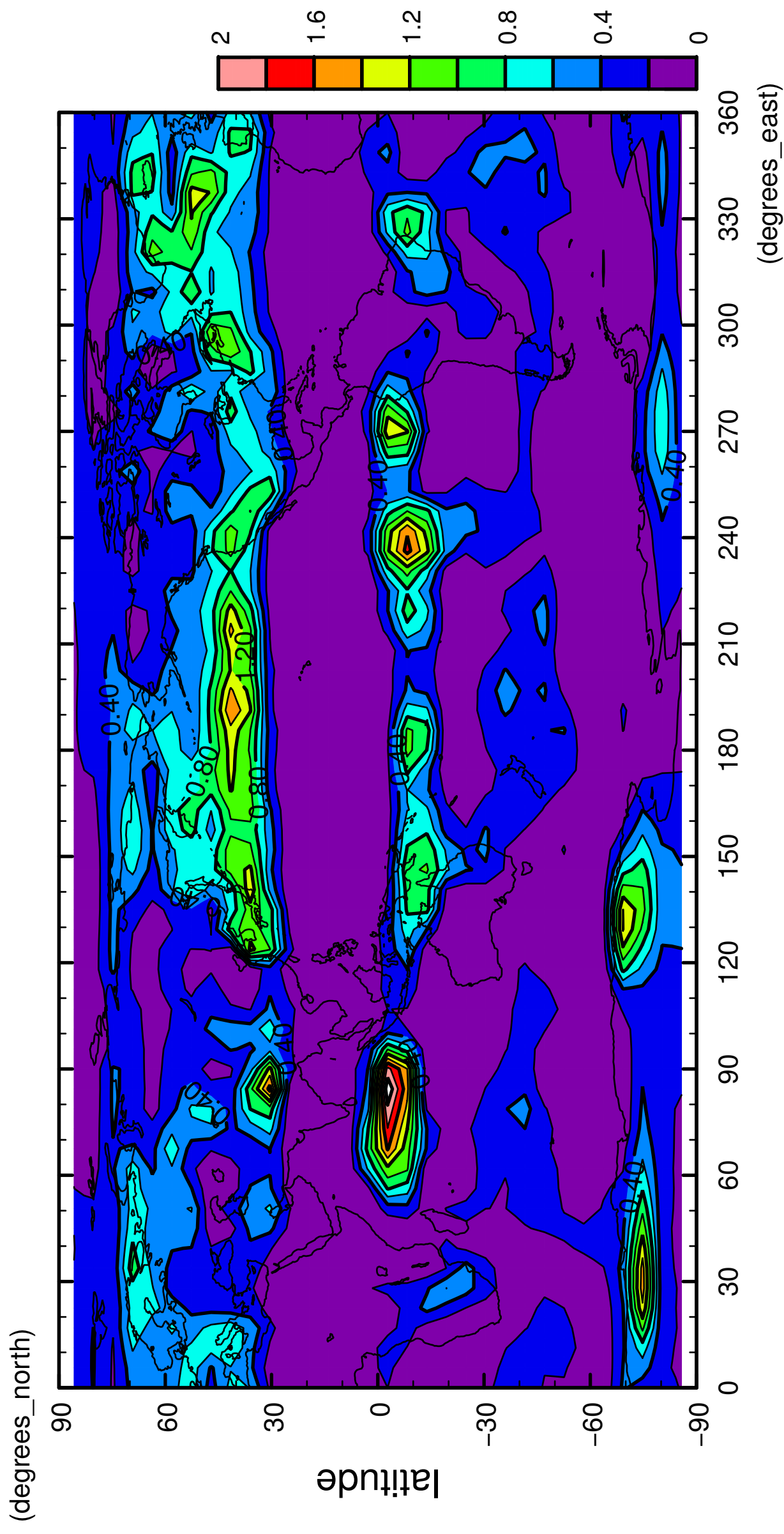
9/12

QH2OSol



10/12

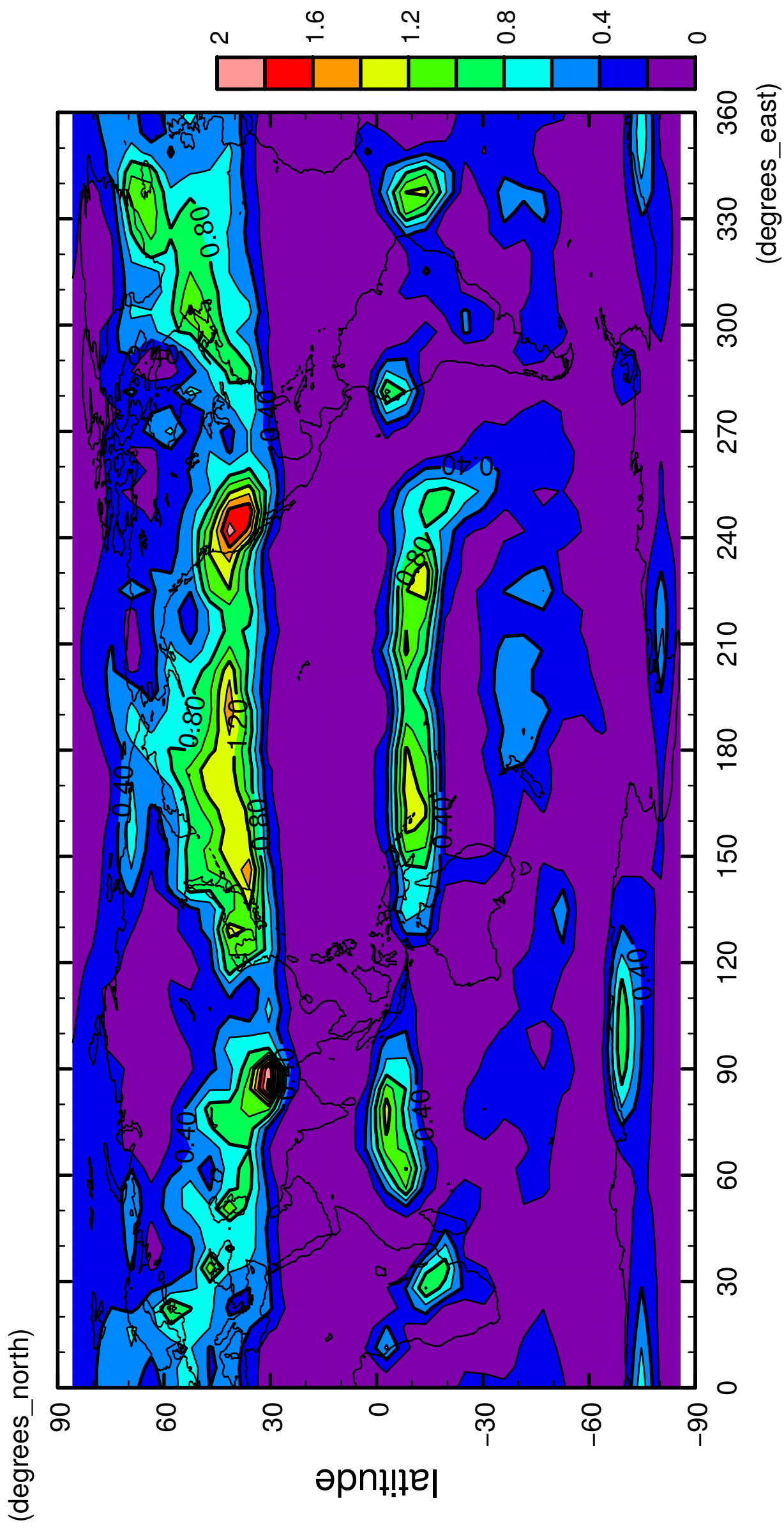
QH2OSol



longitude  
CONTOUR INTERVAL = 2.000E-01

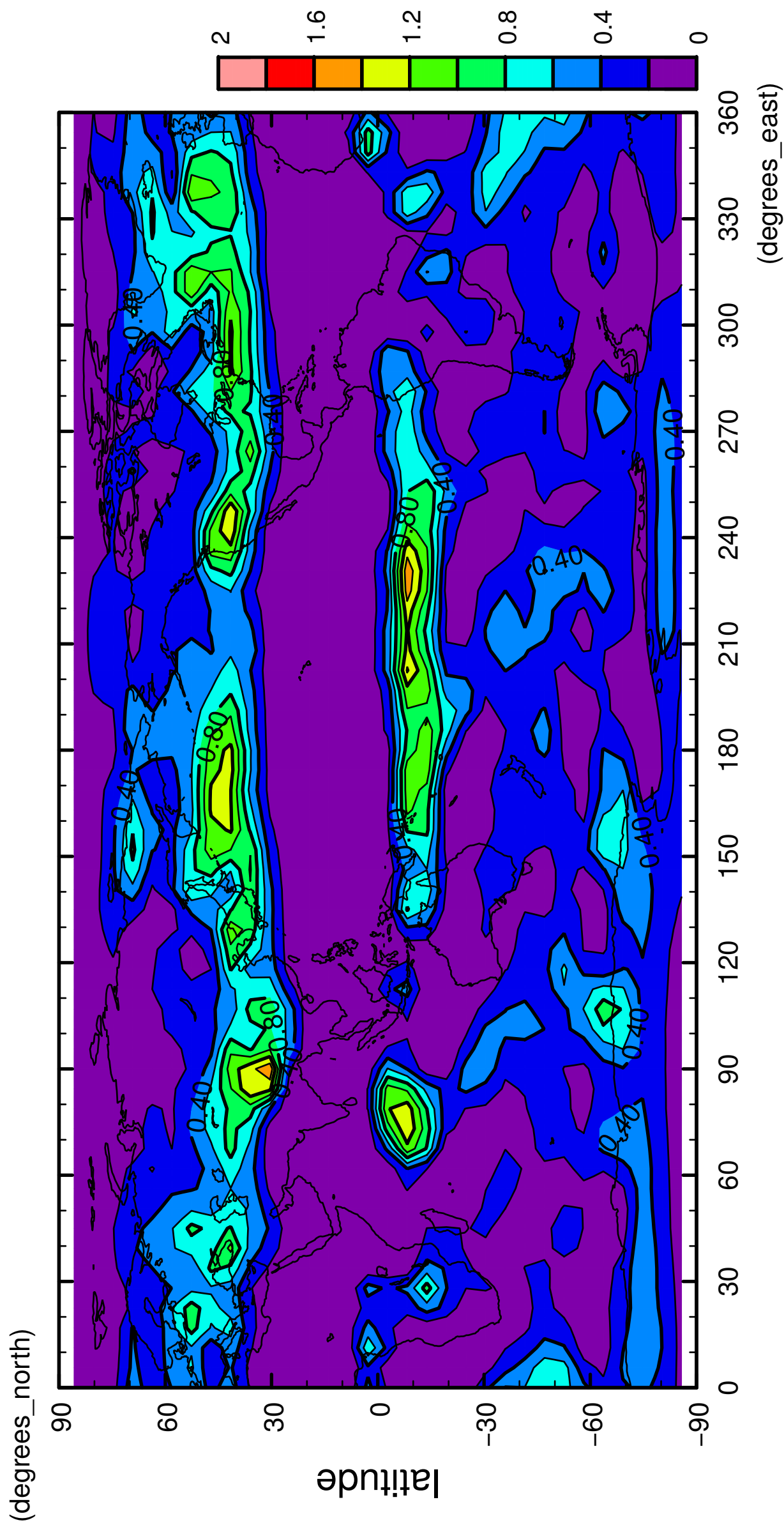
11/12

QH2OSol



12/12

QH2OSol



longitude  
CONTOUR INTERVAL = 2.000E-01