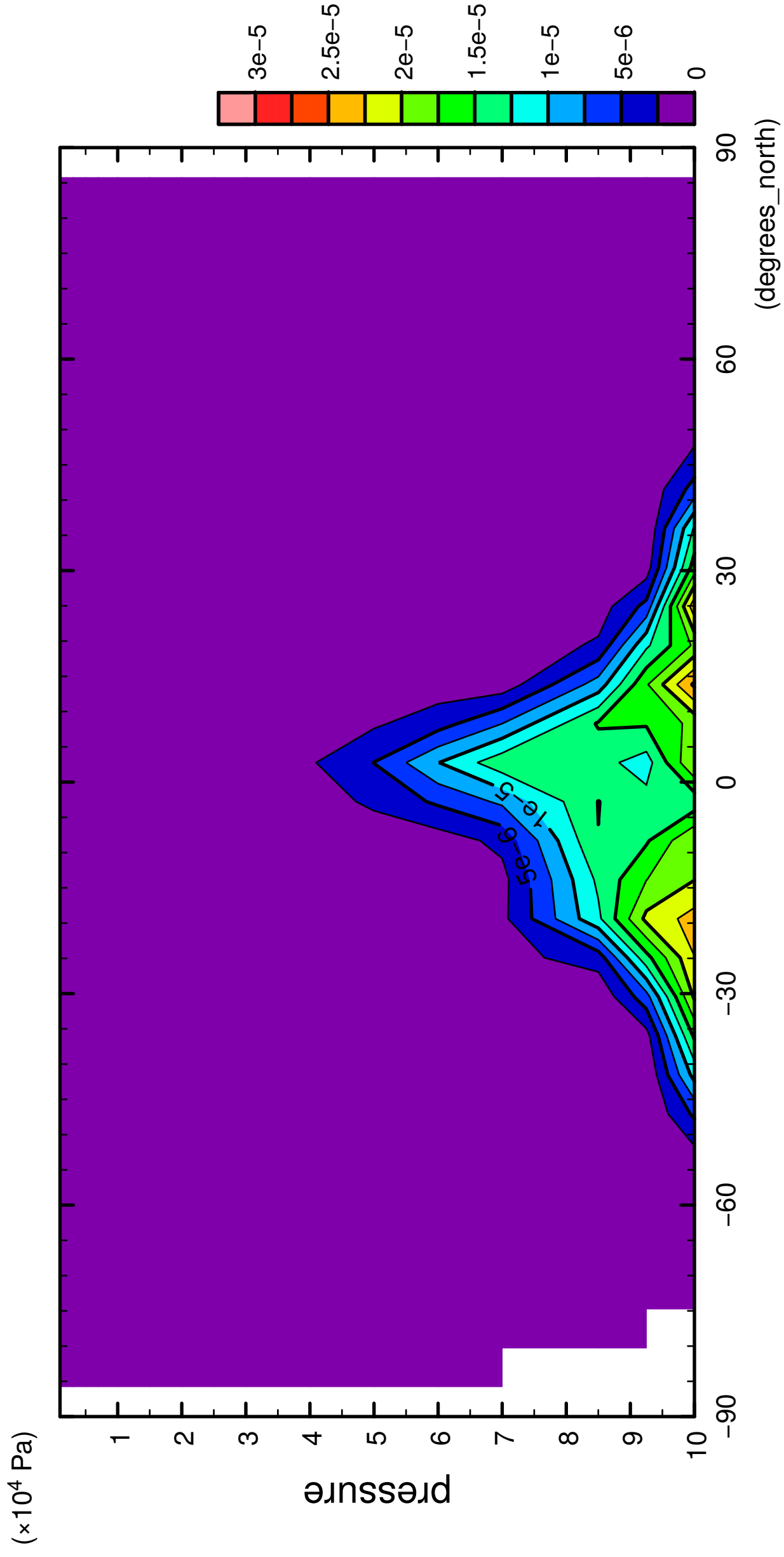


1/12

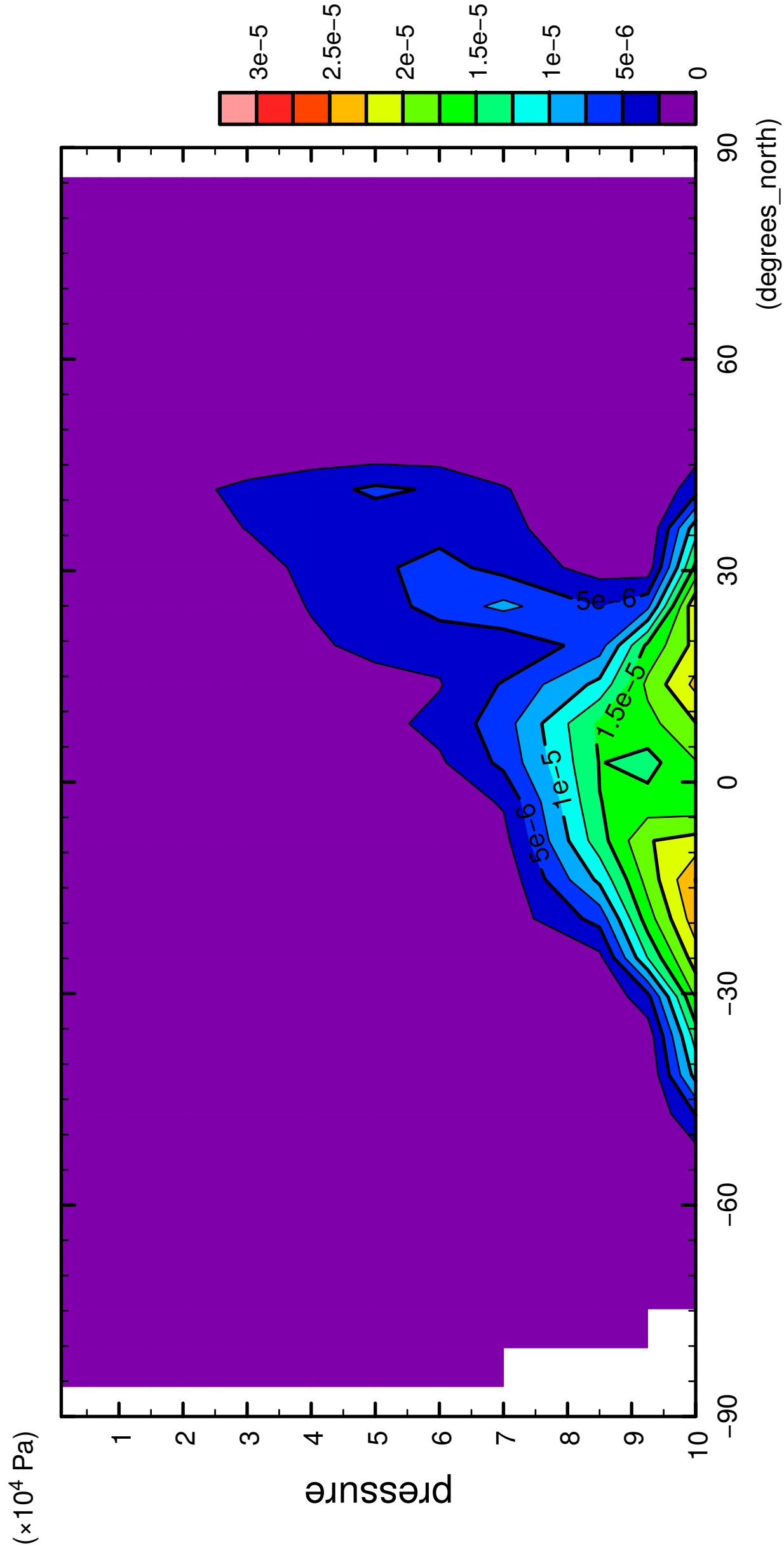
QH2OSol



CONTOUR INTERVAL = 2.500E-06

2/12

QH2OSol

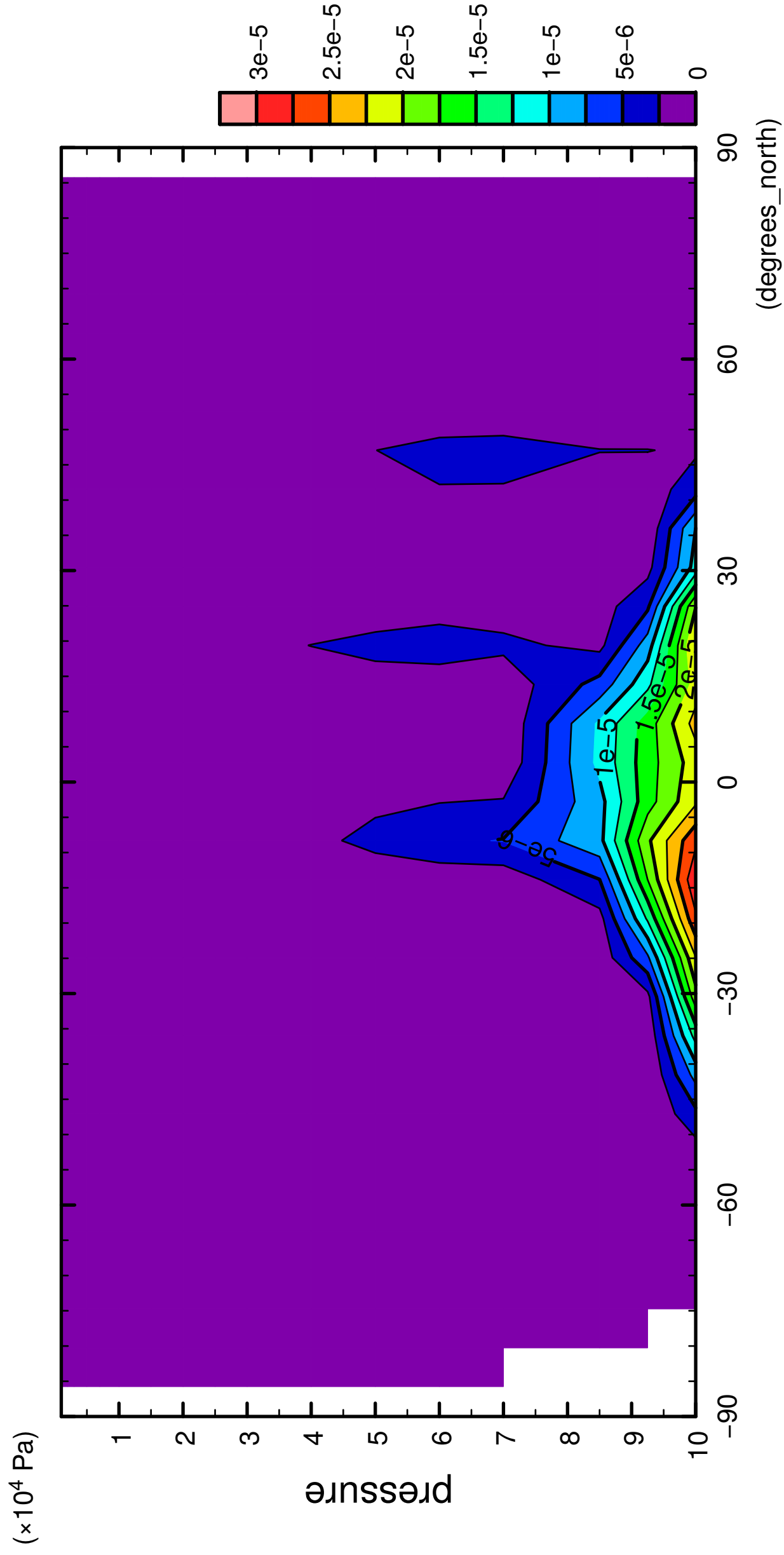


latitude

CONTOUR INTERVAL = 2.500E-06

3/12

QH2OSol

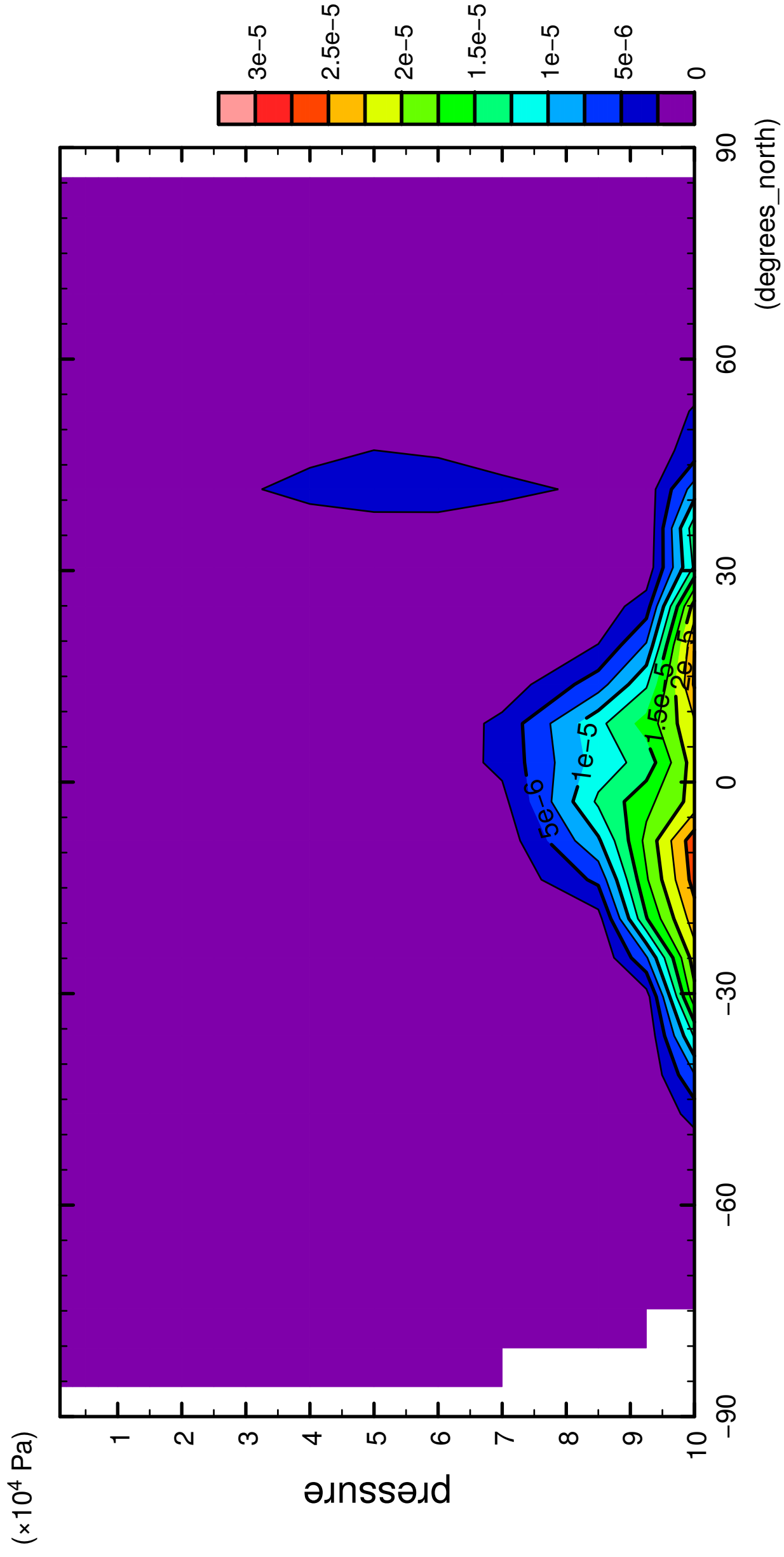


latitude

CONTOUR INTERVAL = 2.500E-06

4/12

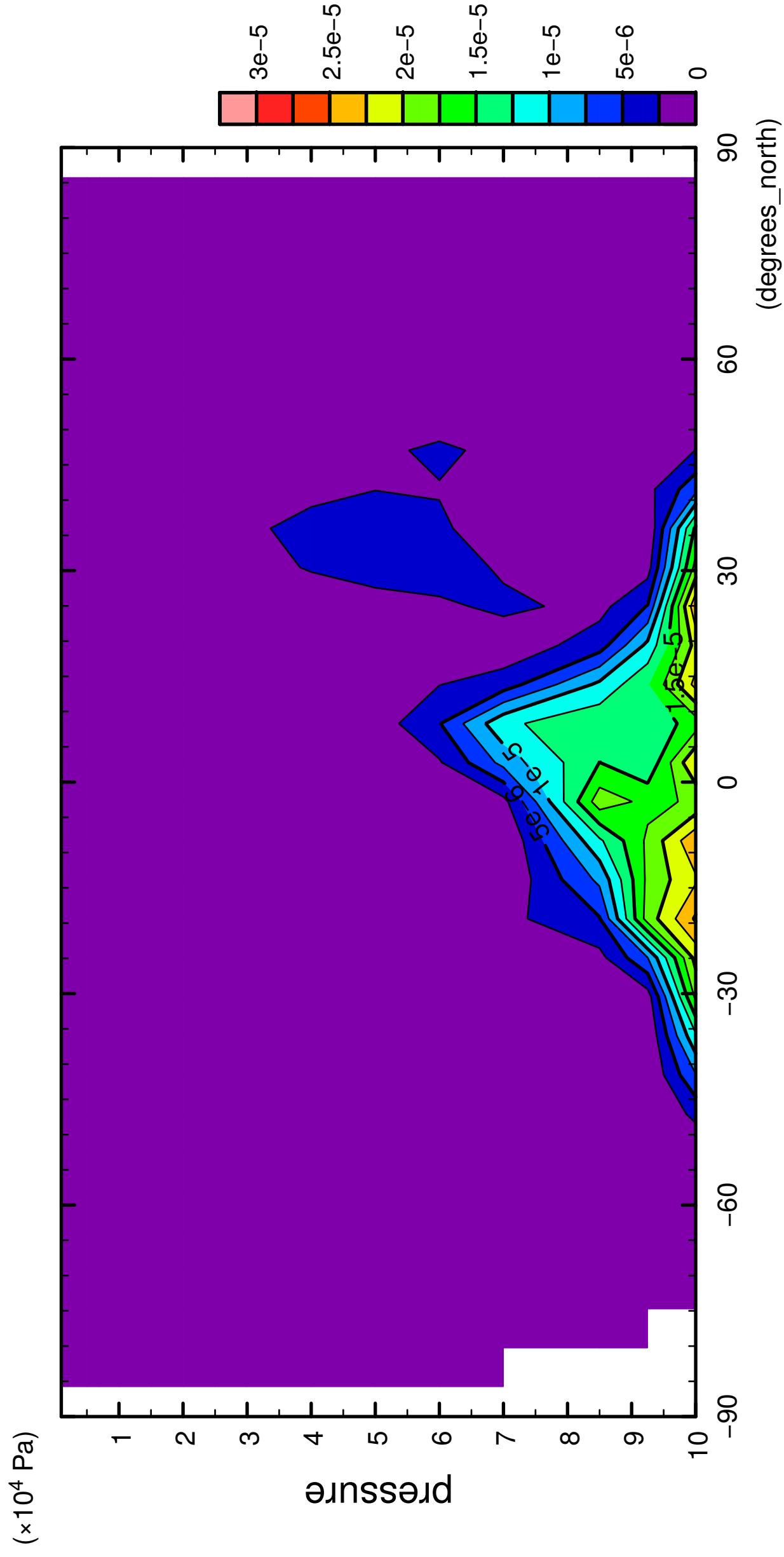
QH2OSol



CONTOUR INTERVAL = 2.500E-06

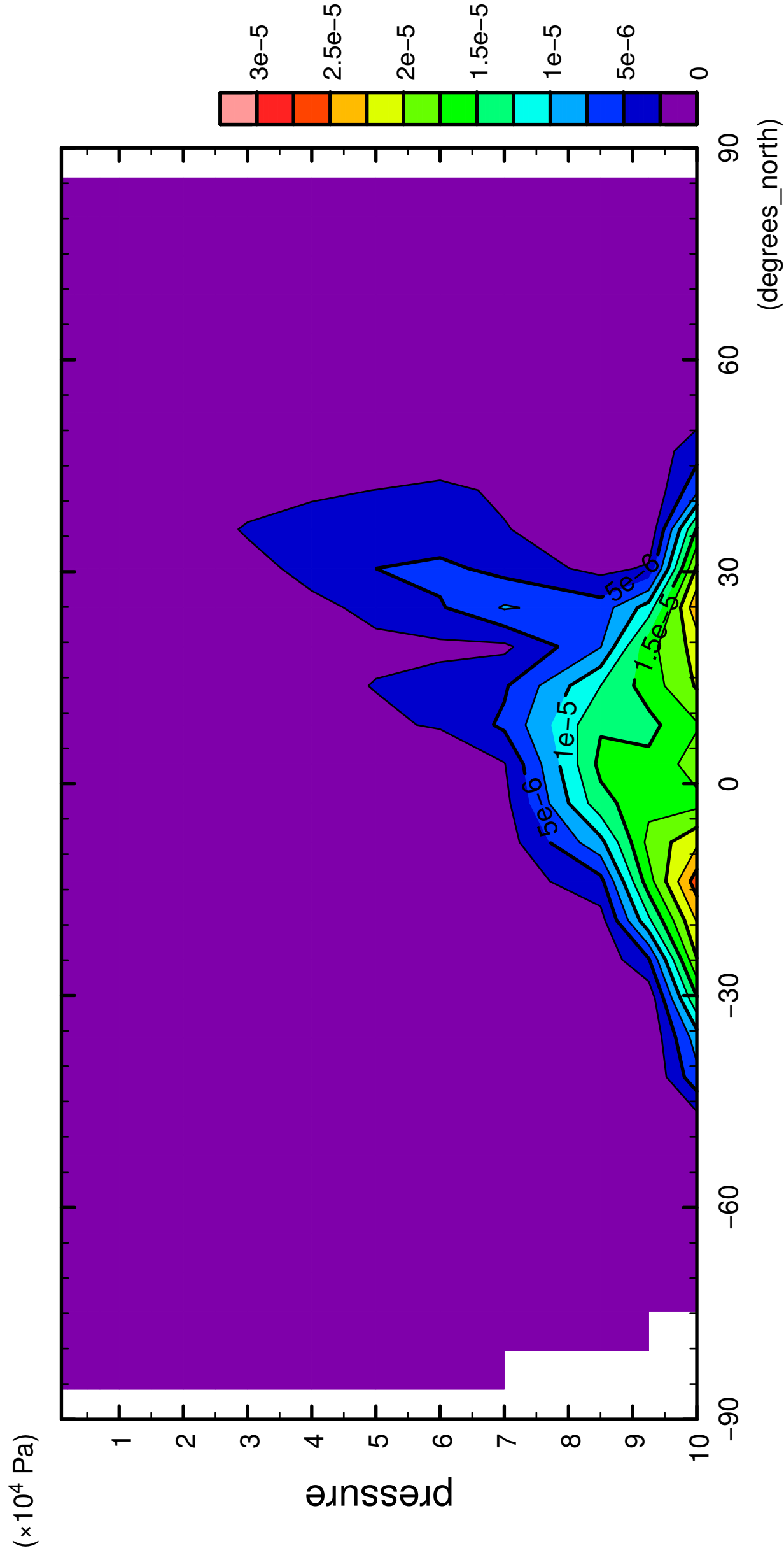
5/12

QH2OSol



6/12

QH2OSol

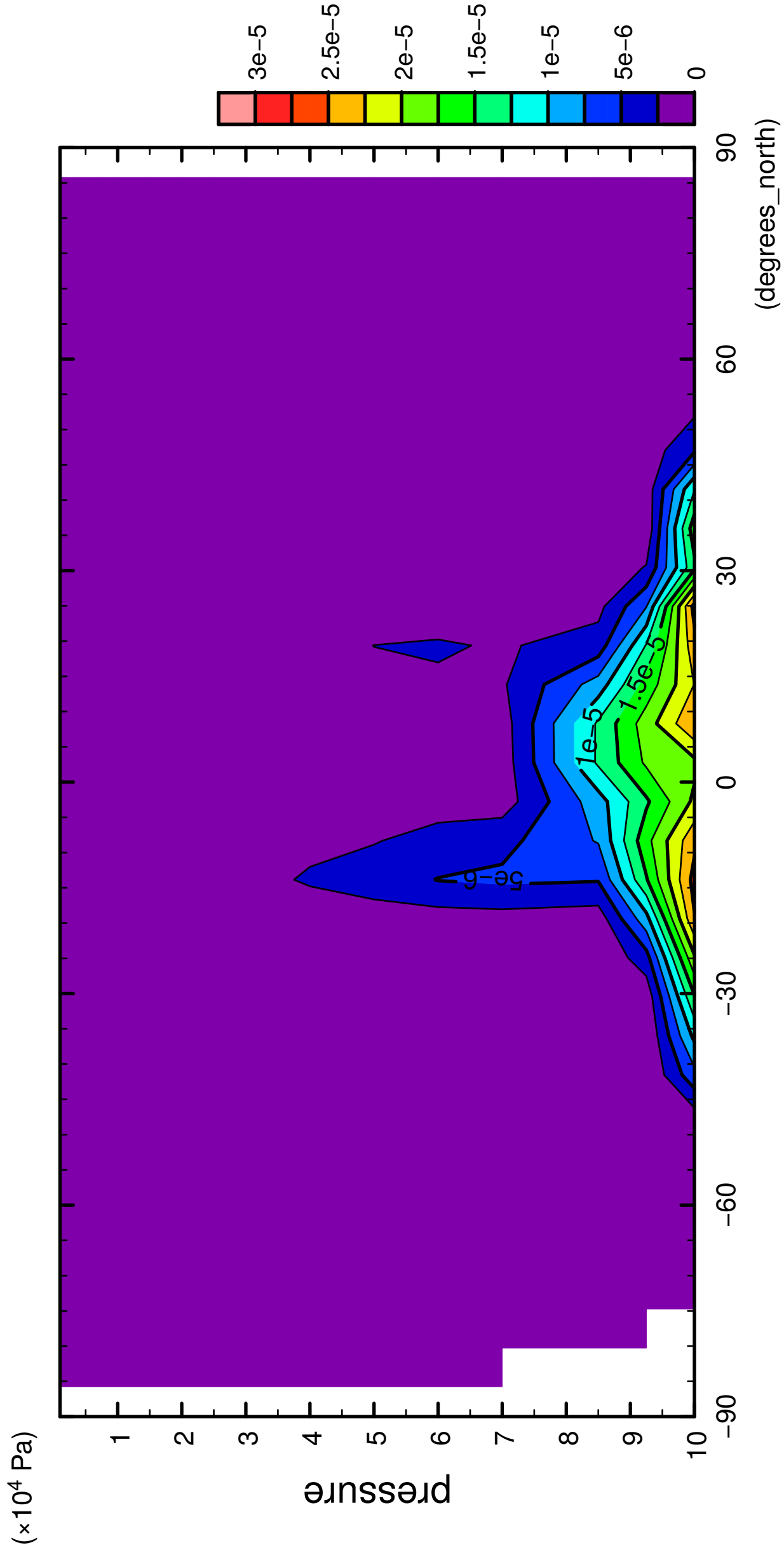


latitude

CONTOUR INTERVAL = 2.500E-06

7/12

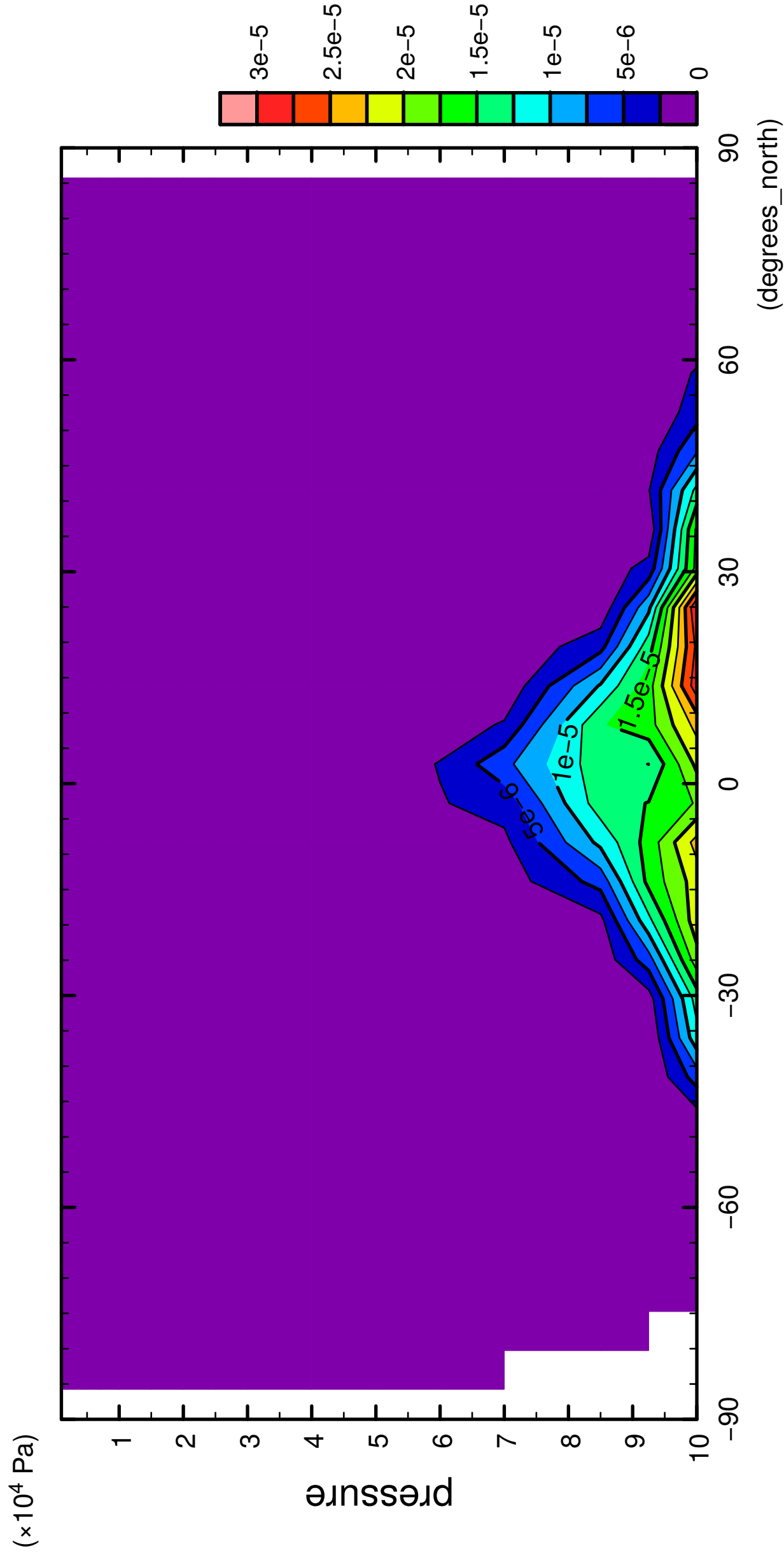
QH2OSol



CONTOUR INTERVAL = 2.500E-06

8/12

QH2OSol



latitude

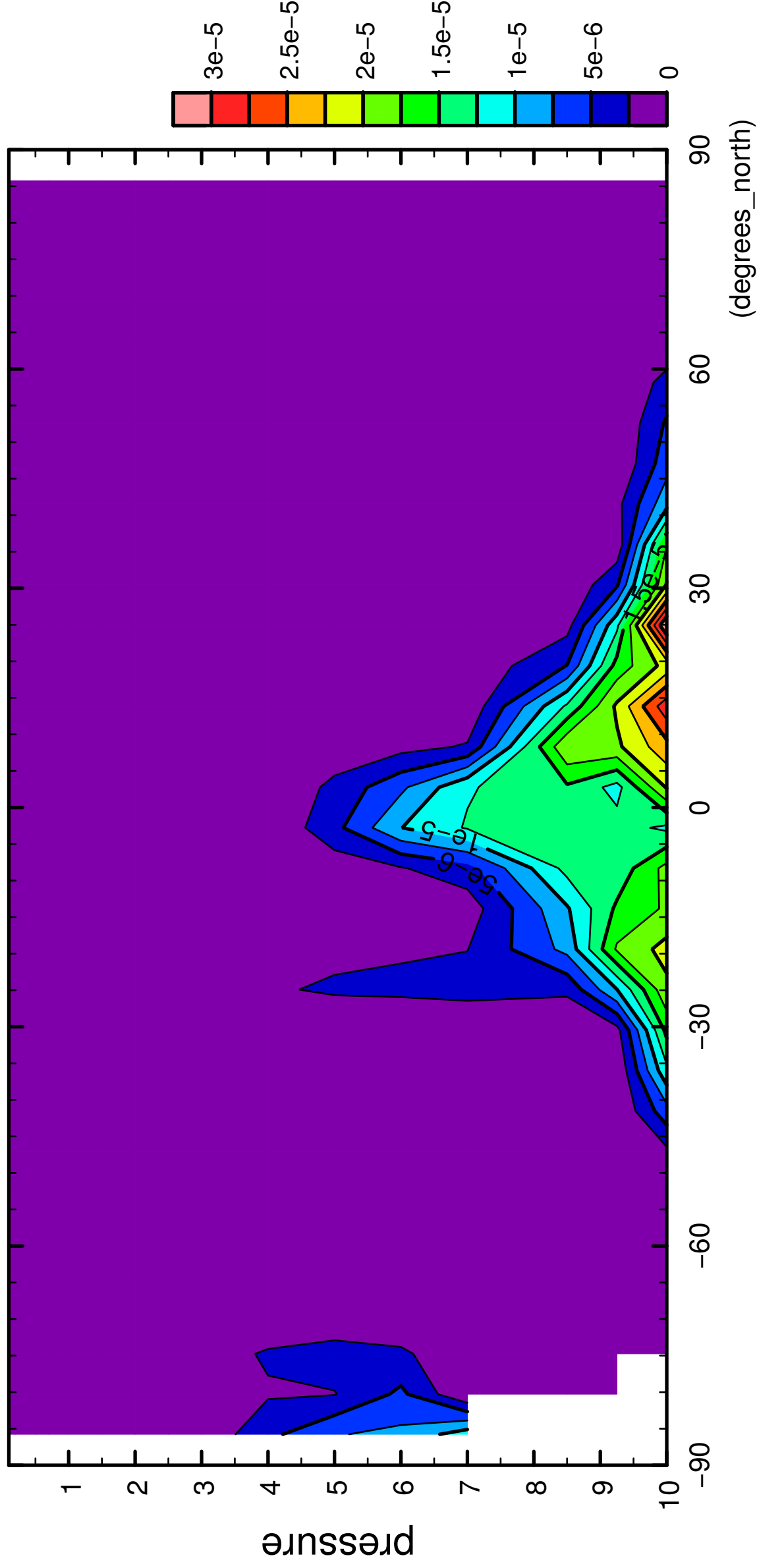
CONTOUR INTERVAL = 2.500E-06



9/12

QH2OSol

( $\times 10^4$  Pa)

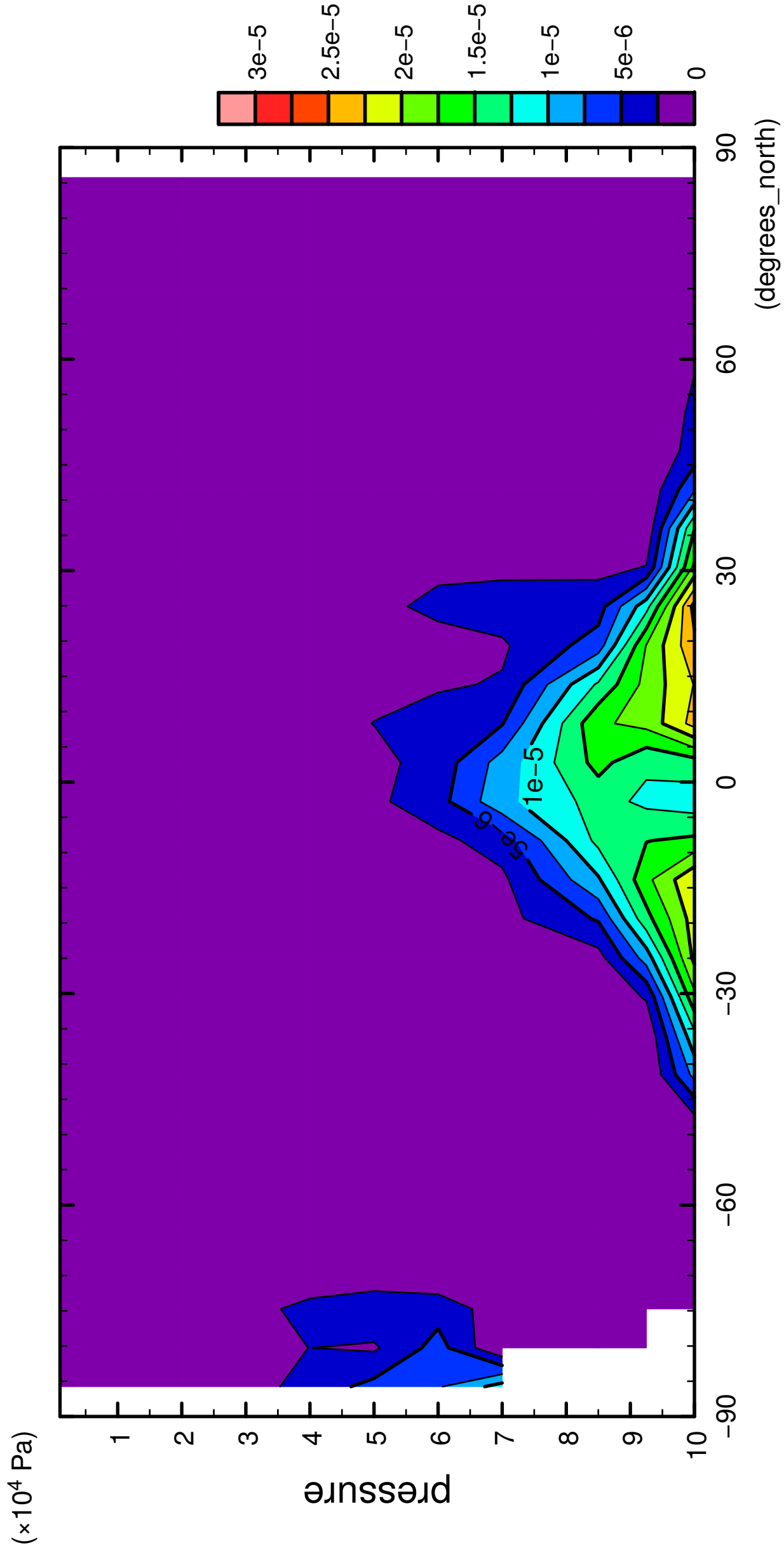


latitude

CONTOUR INTERVAL =  $2.500 \times 10^{-6}$

10/12

QH2OSol

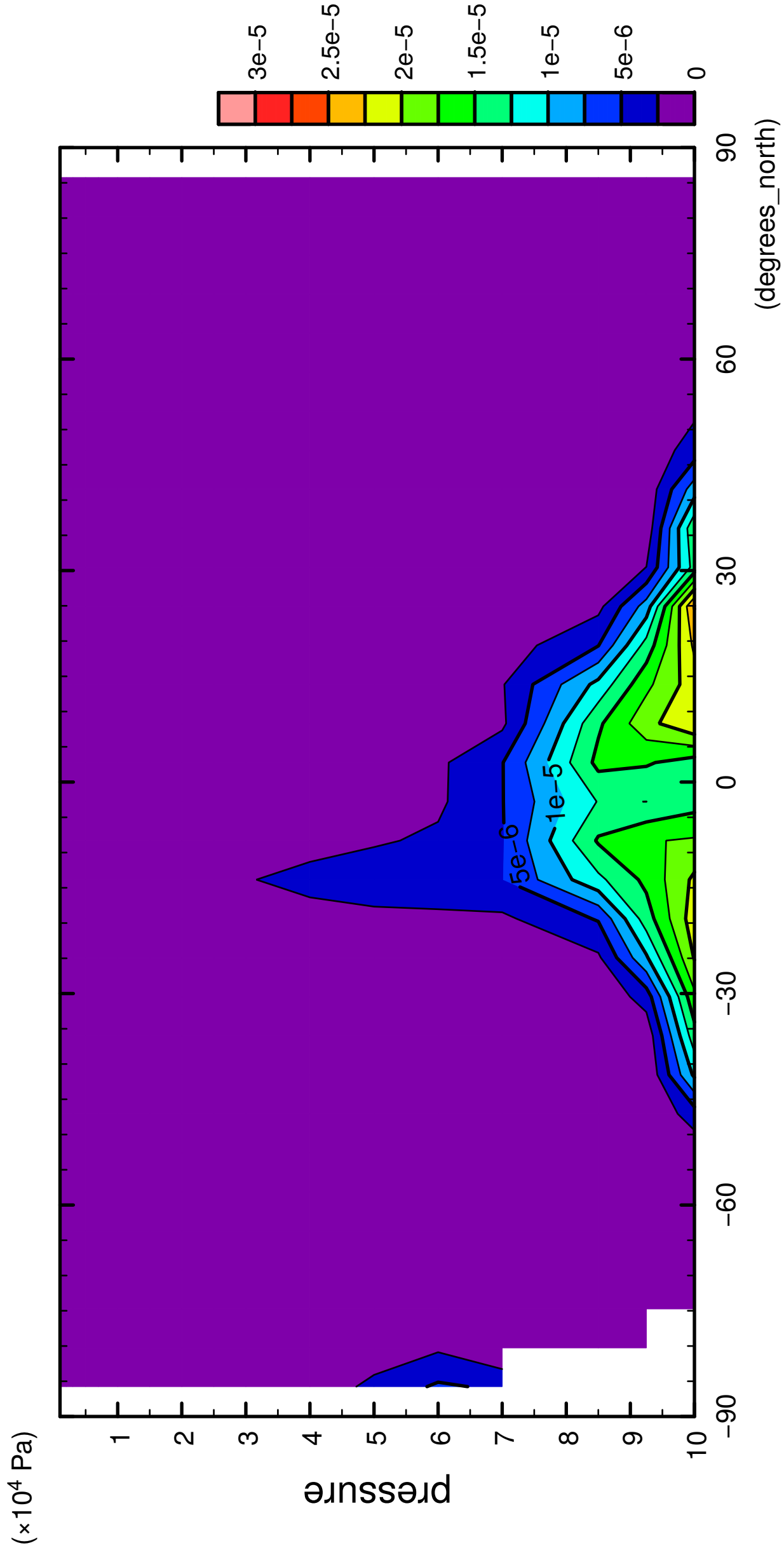


latitude

CONTOUR INTERVAL = 2.500E-06

11/12

QH2OSol



CONTOUR INTERVAL = 2.500E-06

12/12

QH2OSol

