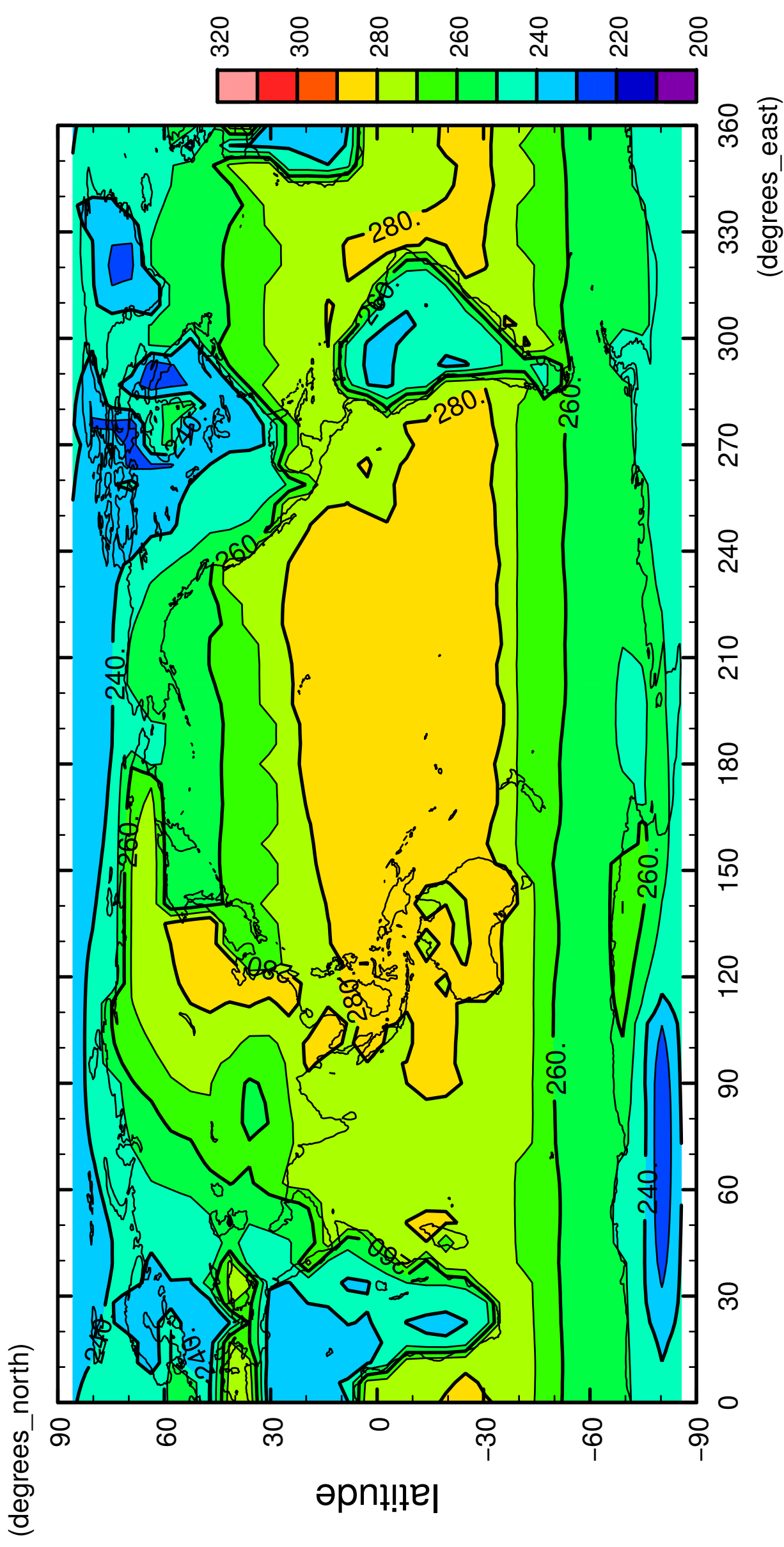


1/12

# surface temperature

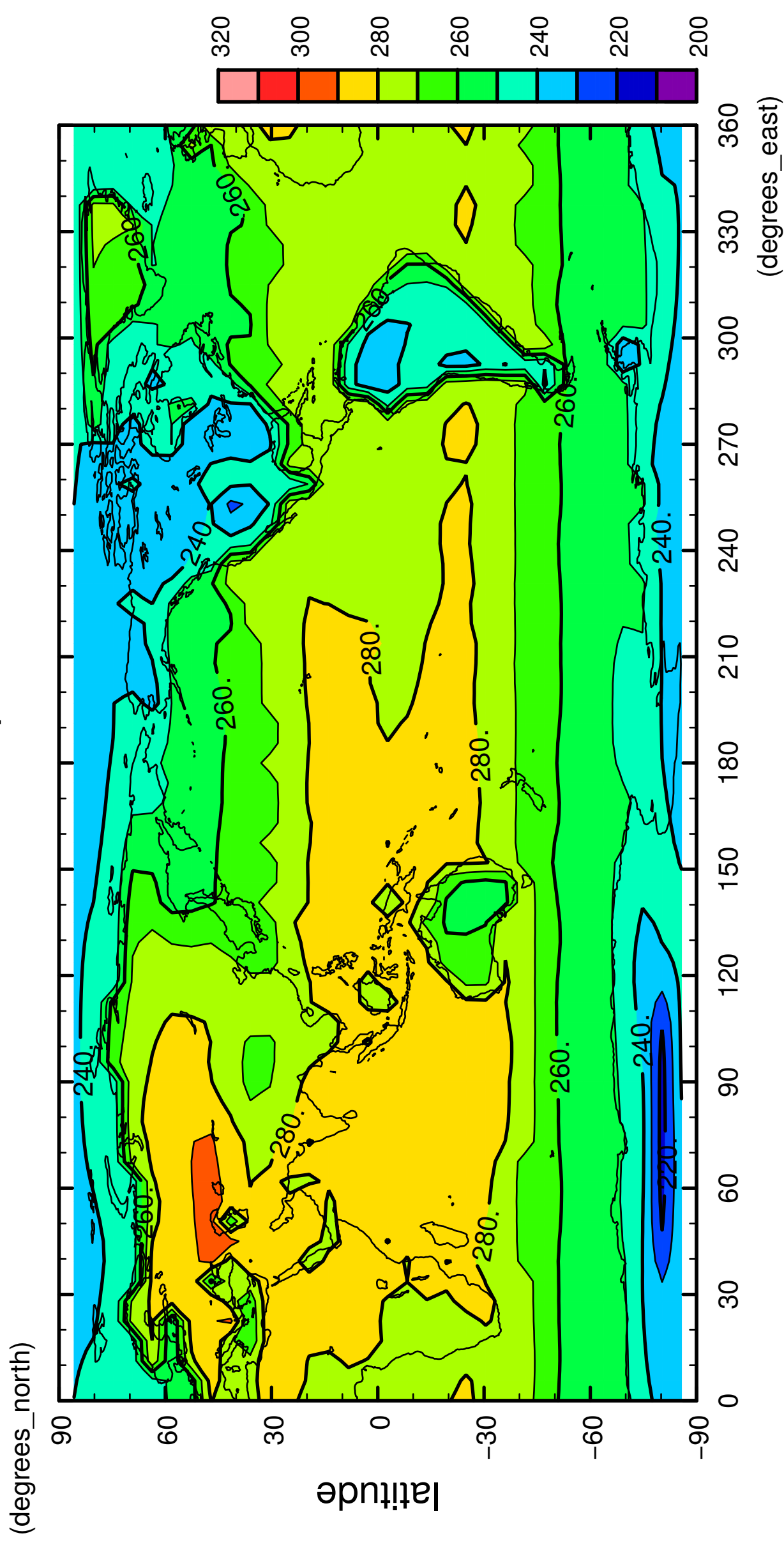


longitude

CONTOUR INTERVAL = 1.000E+01

2/12

# surface temperature

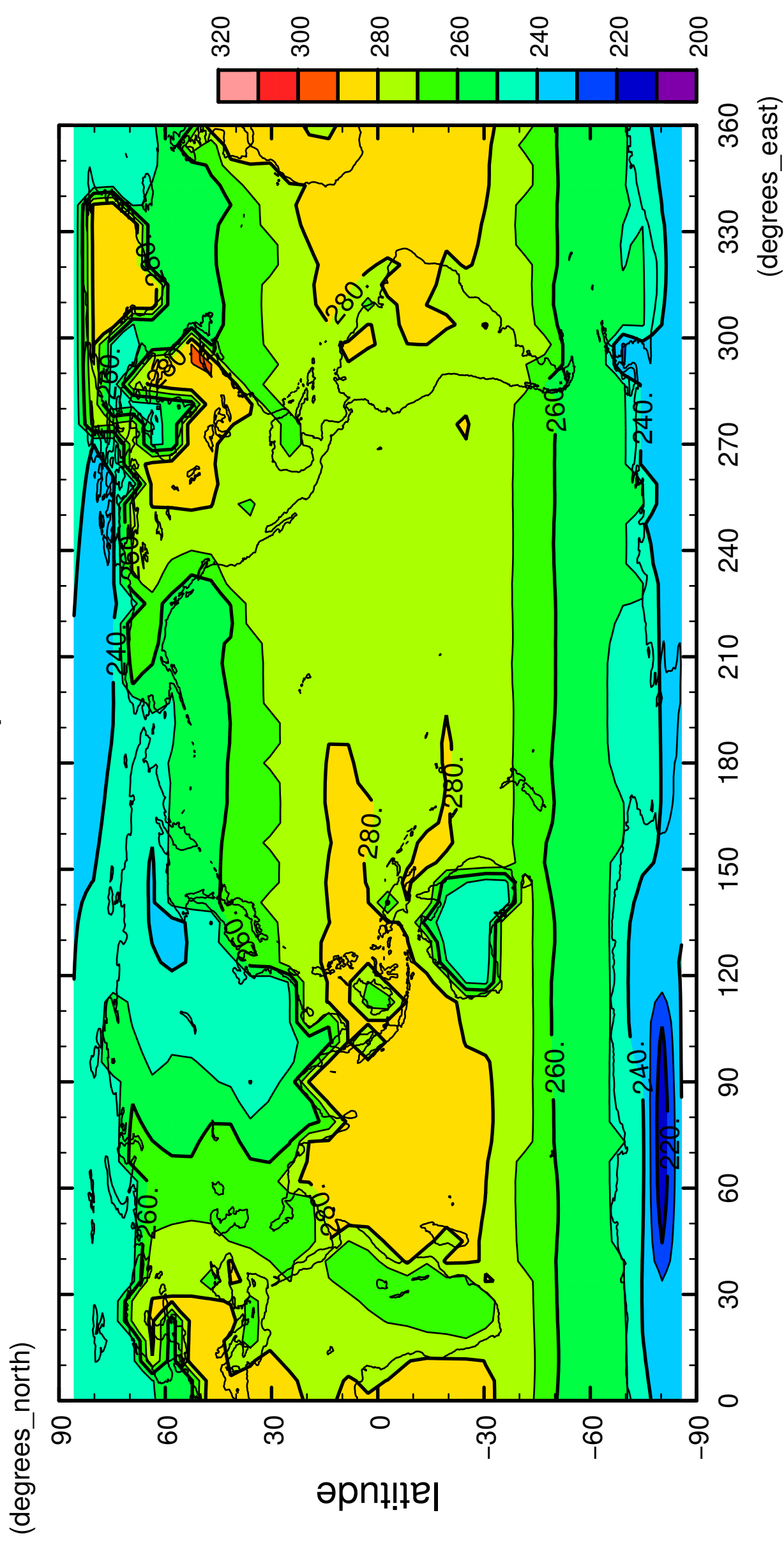


longitude

CONTOUR INTERVAL = 1.000E+01

3/12

# surface temperature

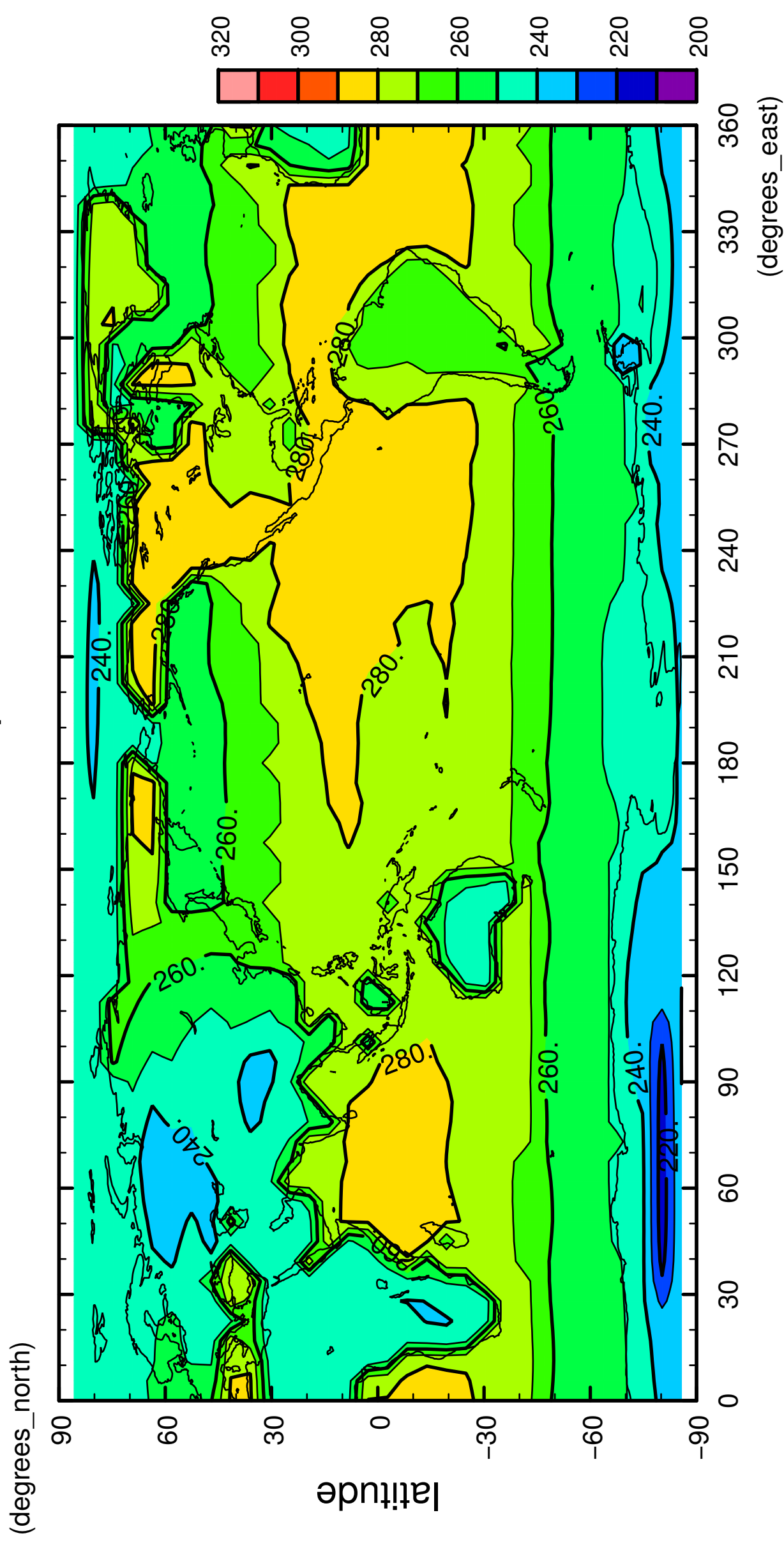


longitude

CONTOUR INTERVAL = 1.000E+01

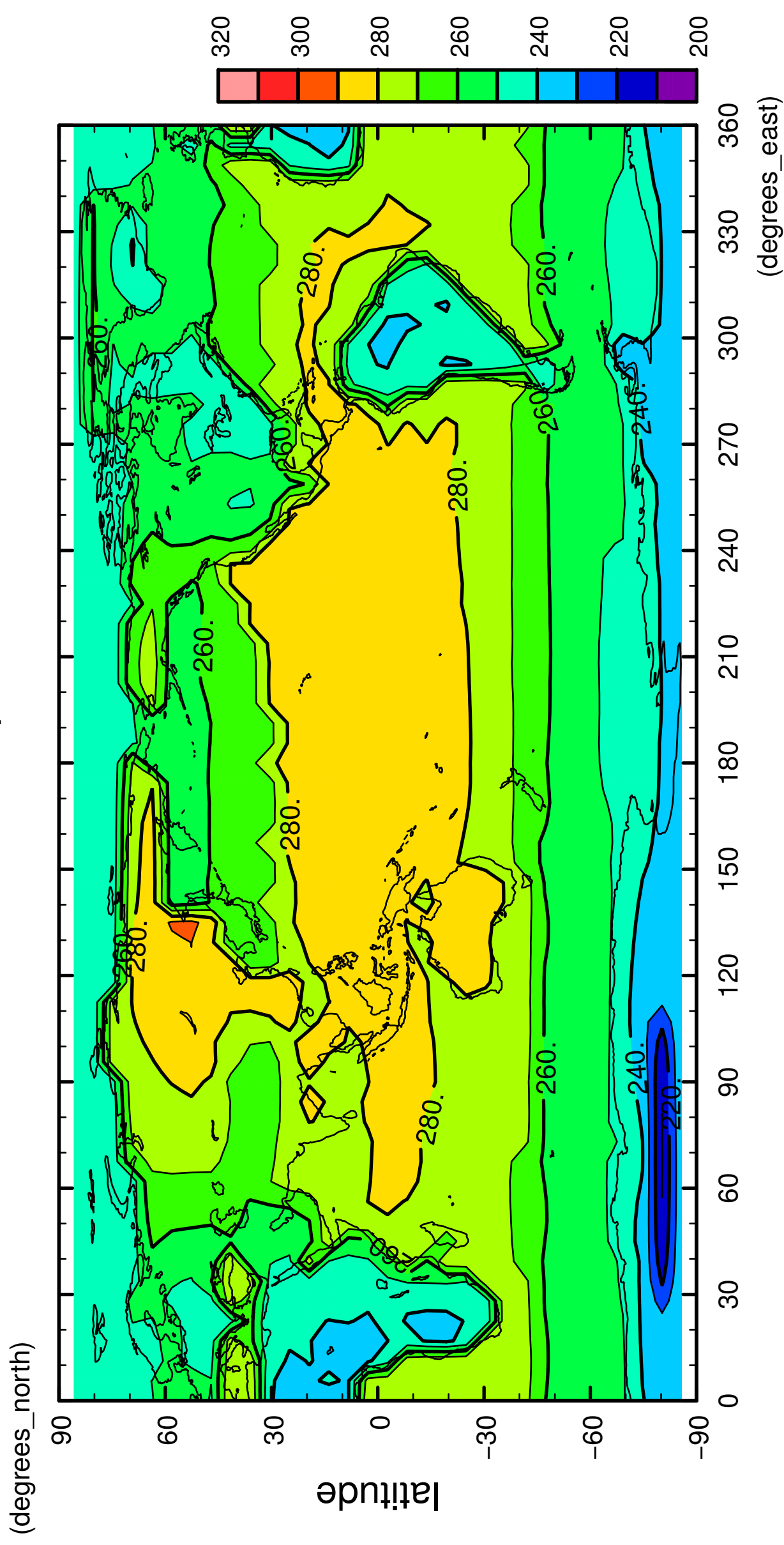
4/12

# surface temperature



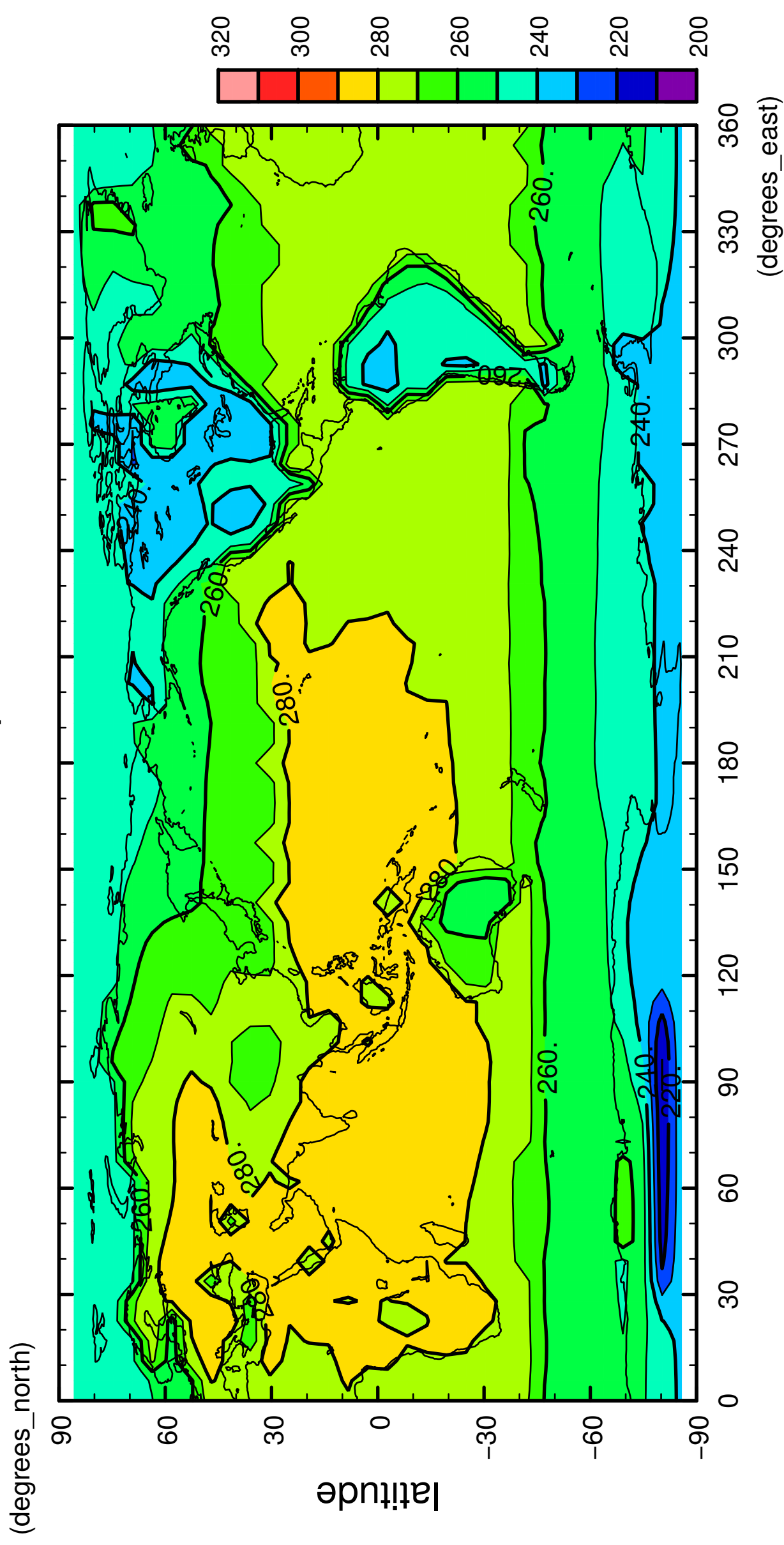
5/12

# surface temperature



6/12

# surface temperature

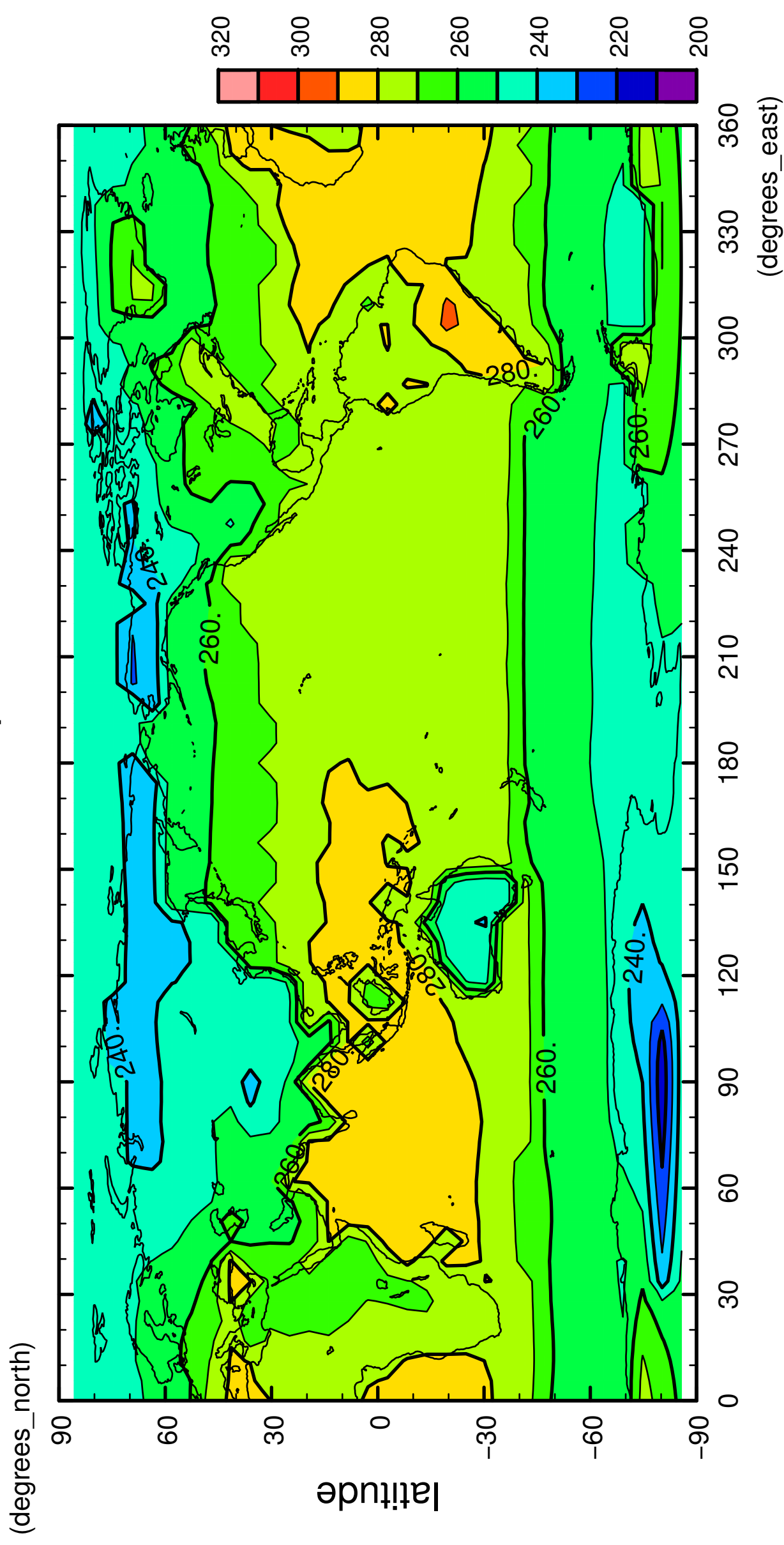


longitude

CONTOUR INTERVAL = 1.000E+01

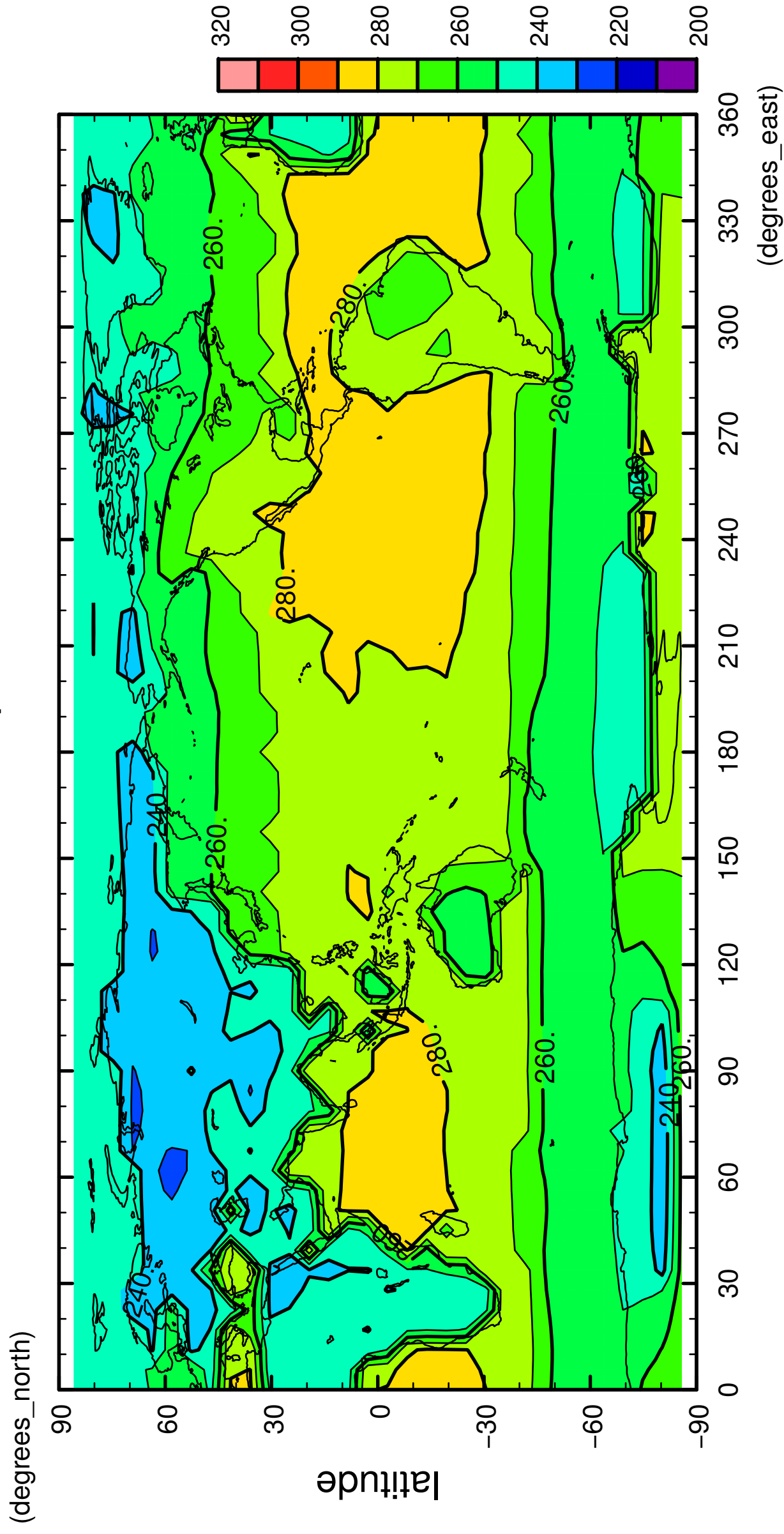
7/12

# surface temperature



8/12

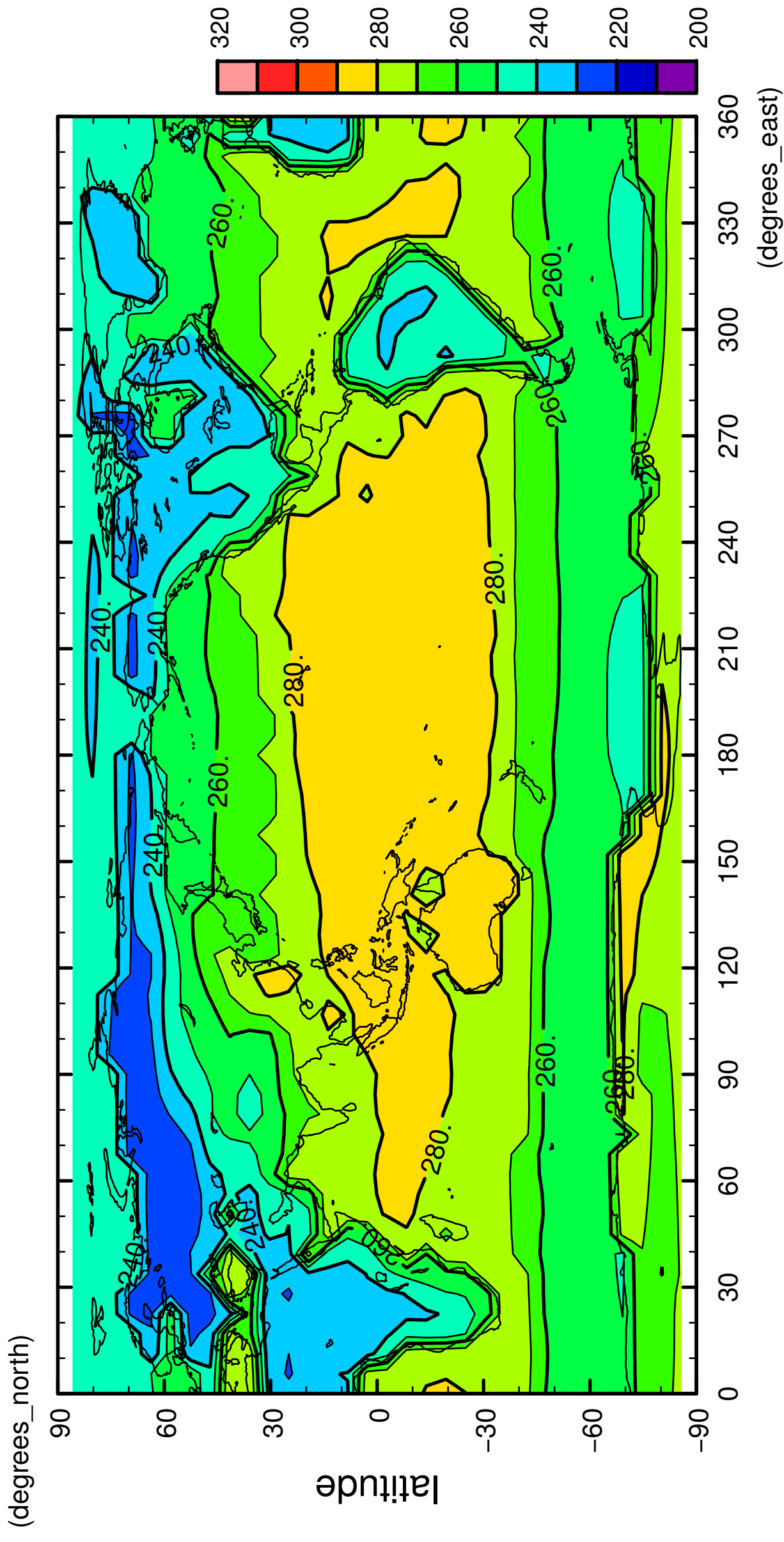
# surface temperature





9/12

### surface temperature

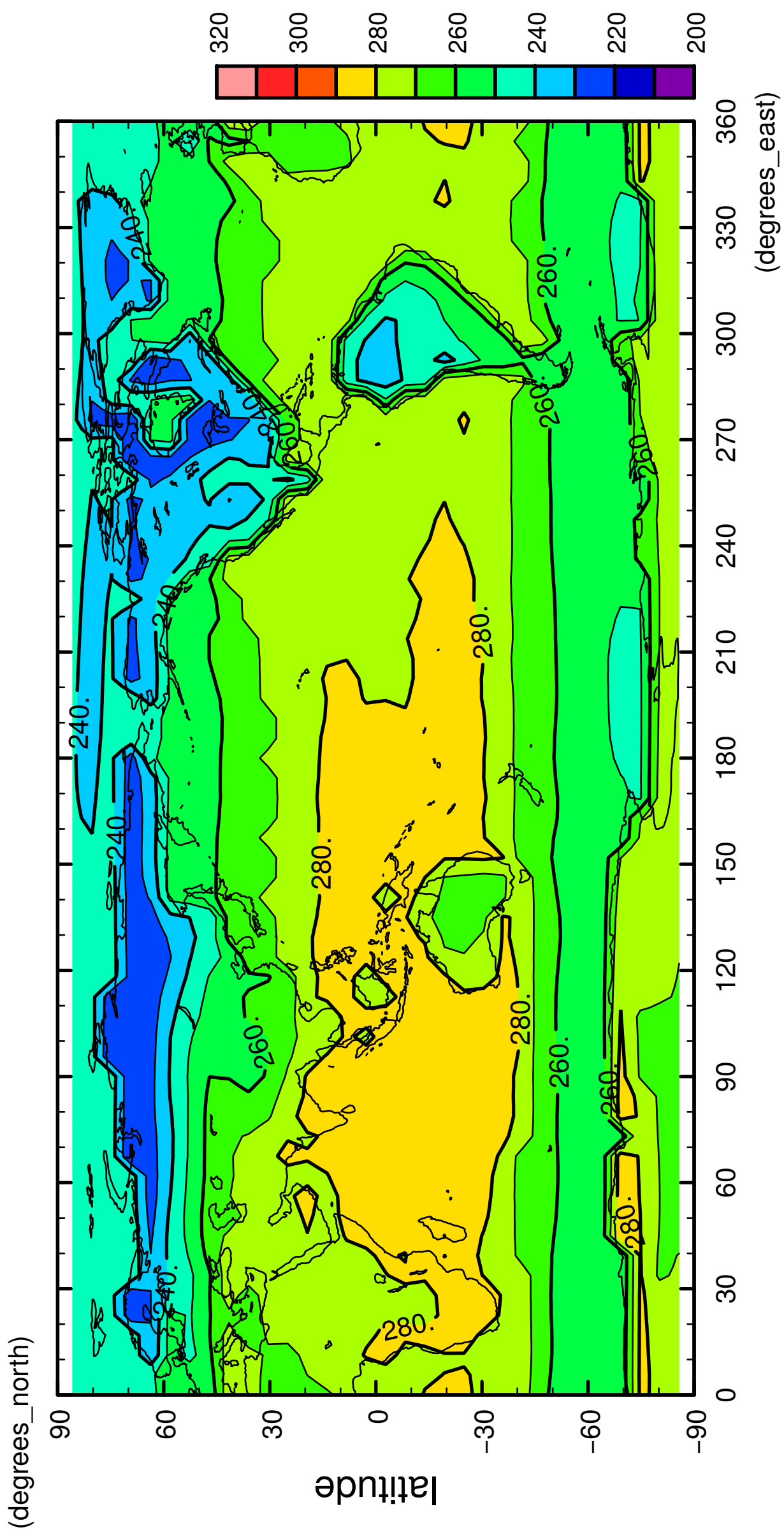


longitude

CONTOUR INTERVAL = 1.000E+01

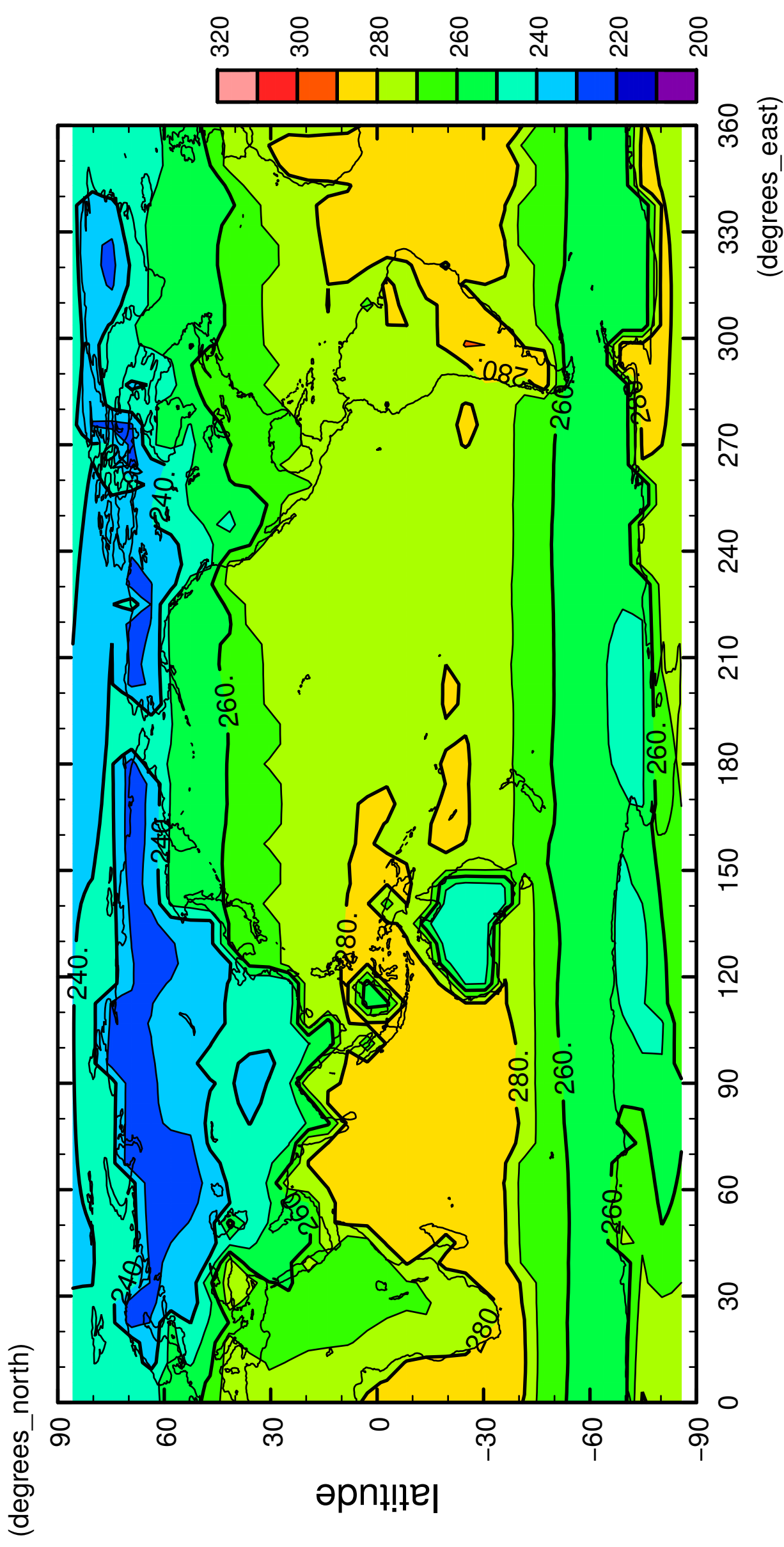
10/12

# surface temperature



11/12

# surface temperature



longitude

CONTOUR INTERVAL = 1.000E+01

12/12

# surface temperature

