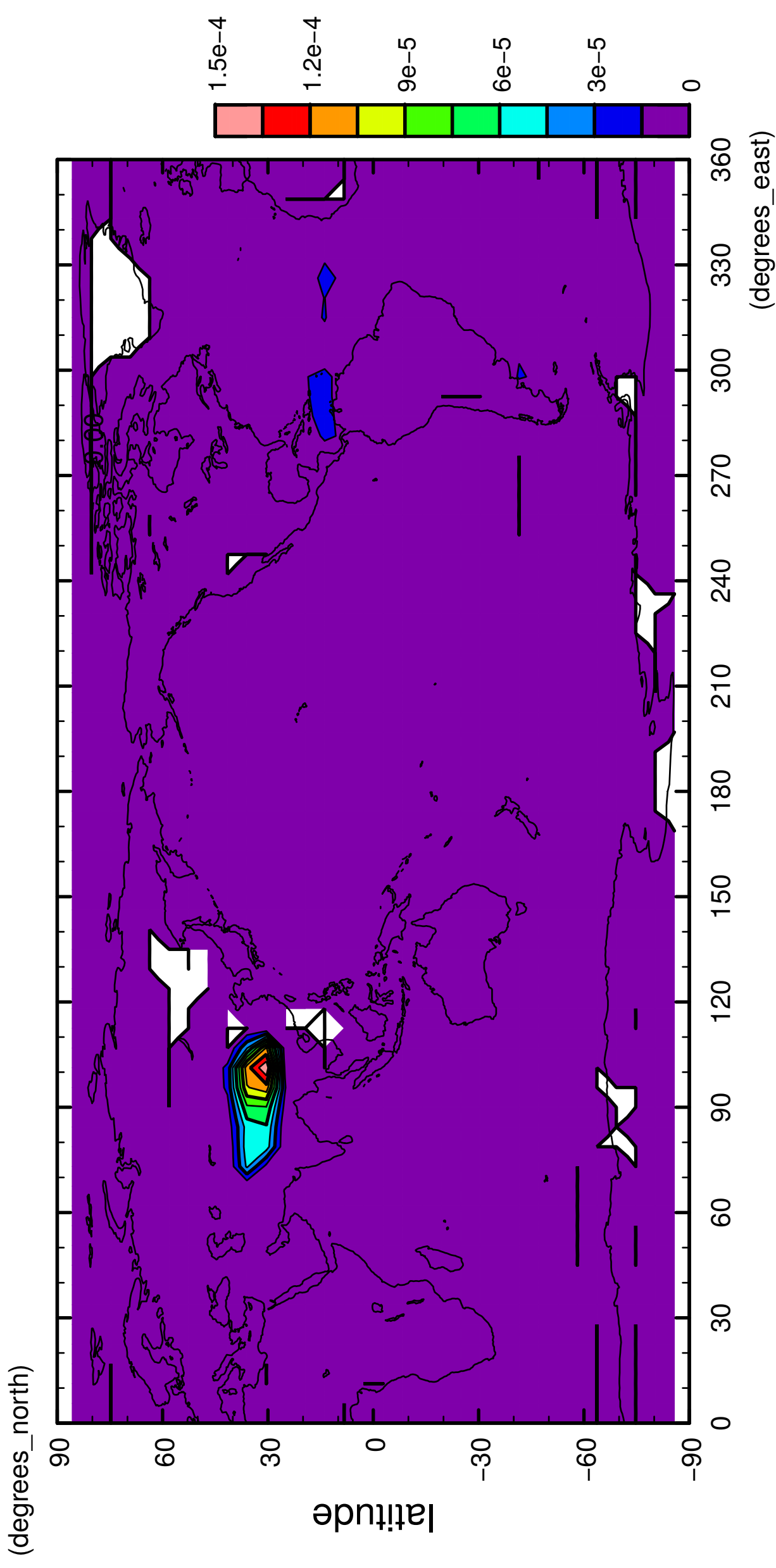


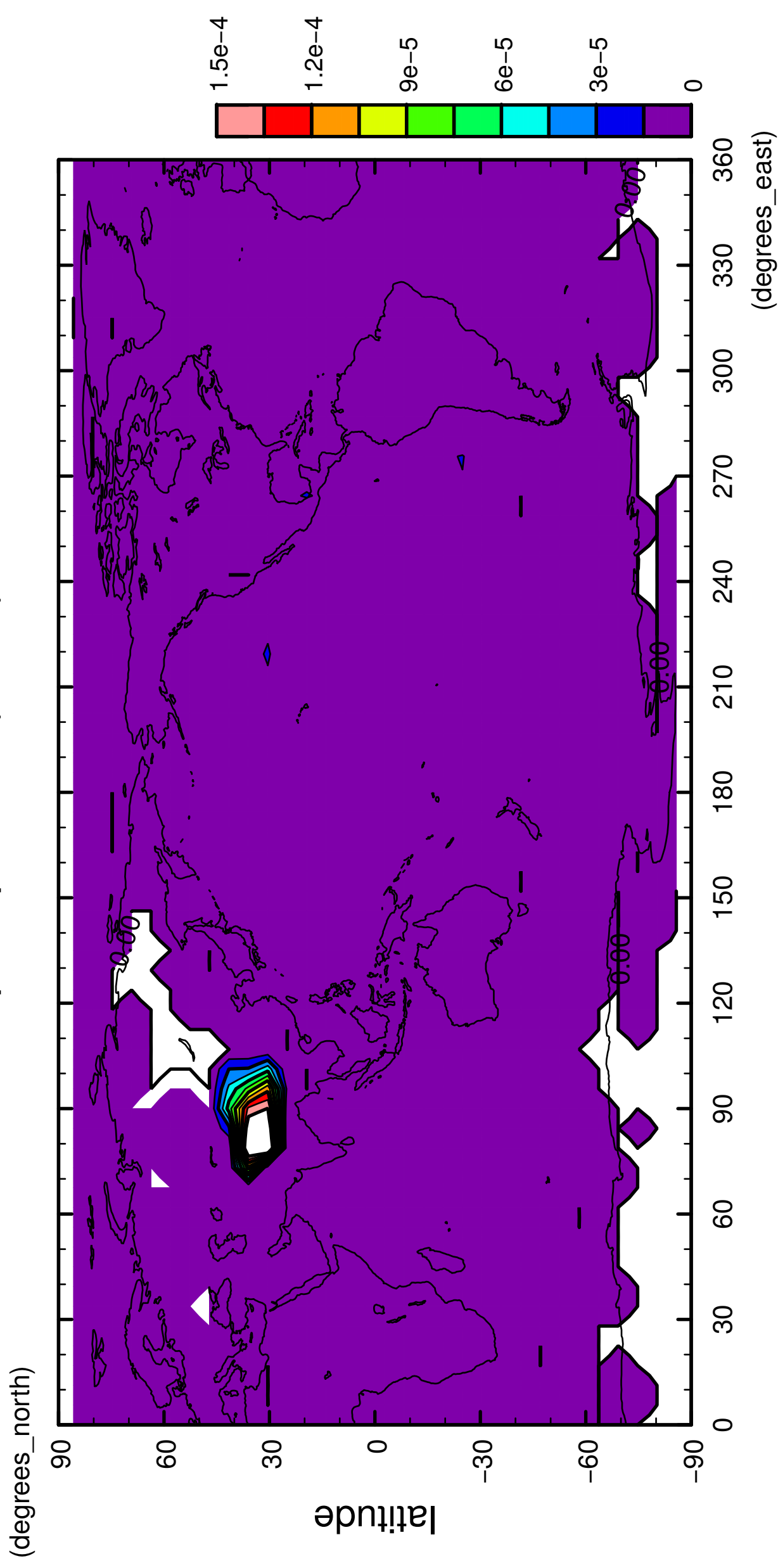
1/12

precipitation (snow)



2/12

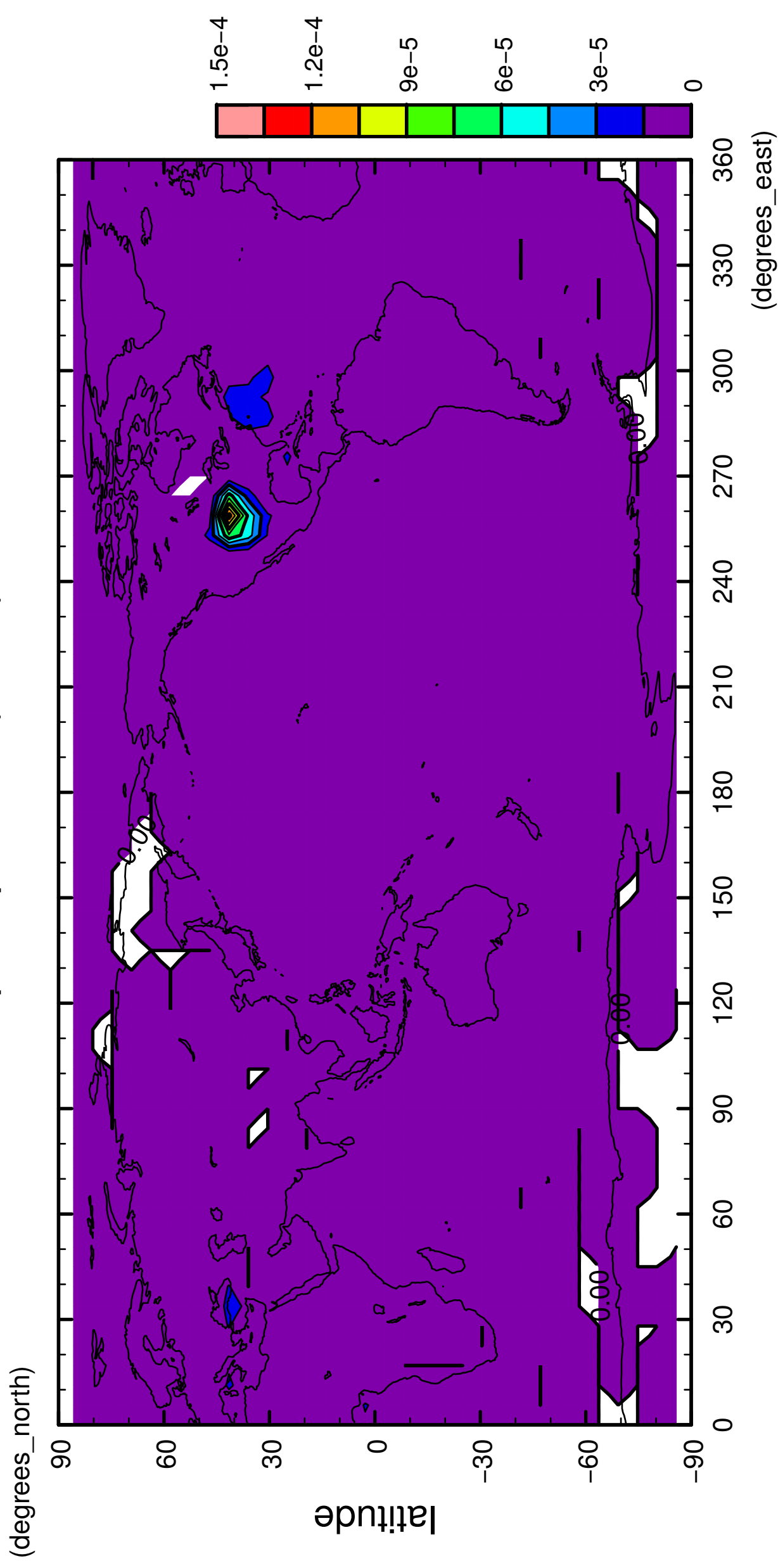
precipitation (snow)



longititude
CONTOUR INTERVAL = 1.500E-05

4/12

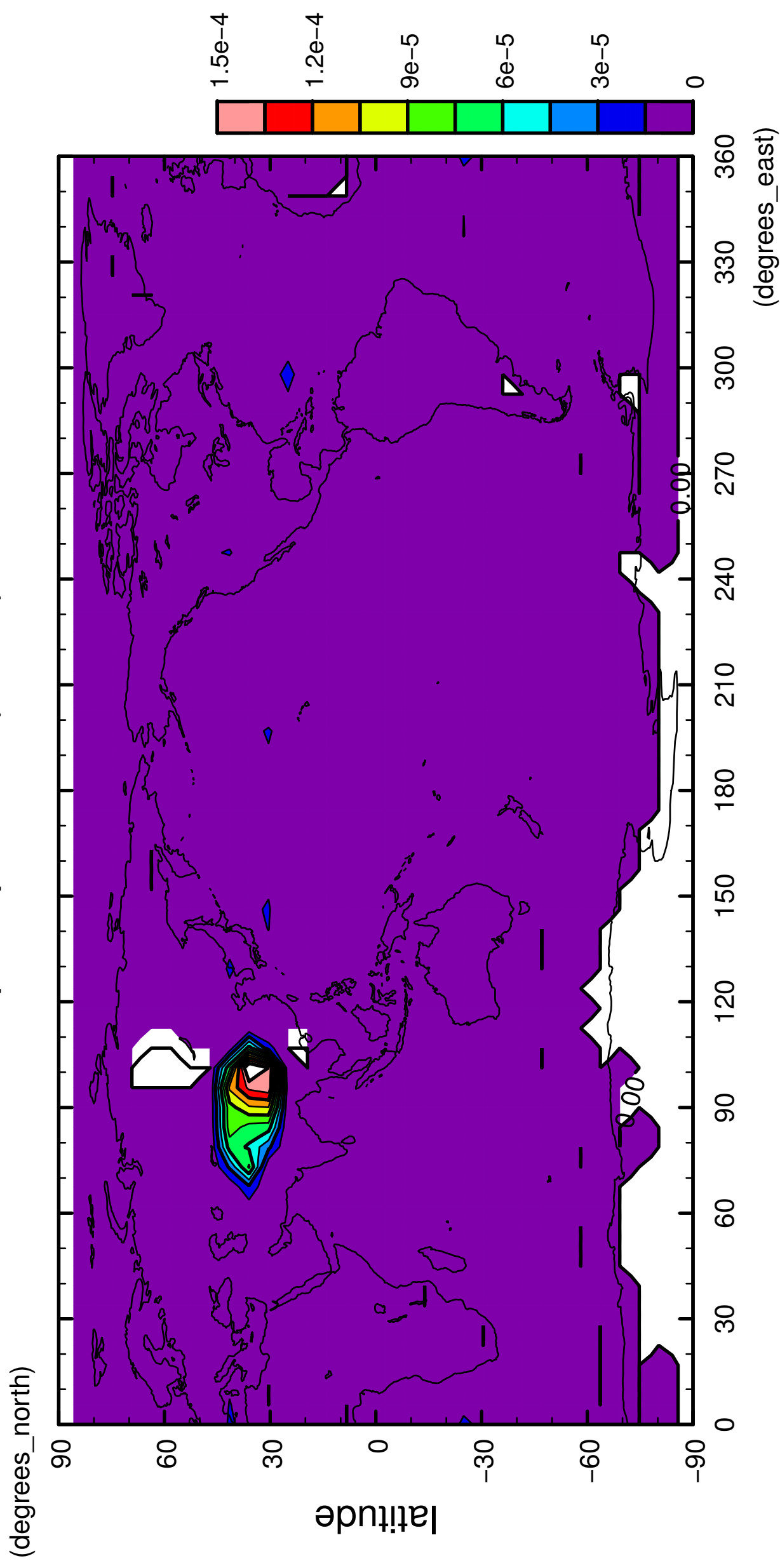
precipitation (snow)



longitude
CONTOUR INTERVAL = 1.500E-05

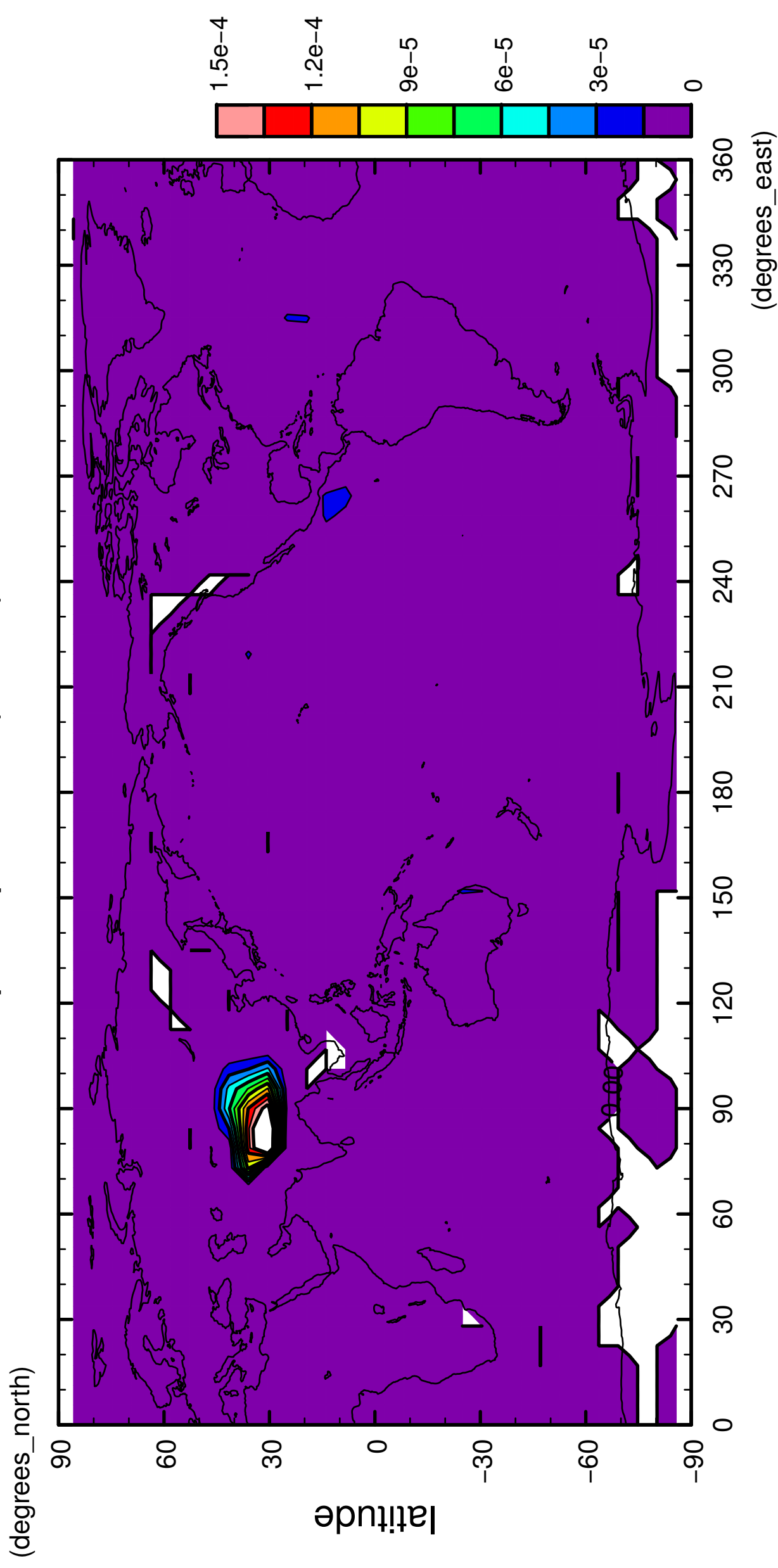
5/12

precipitation (snow)



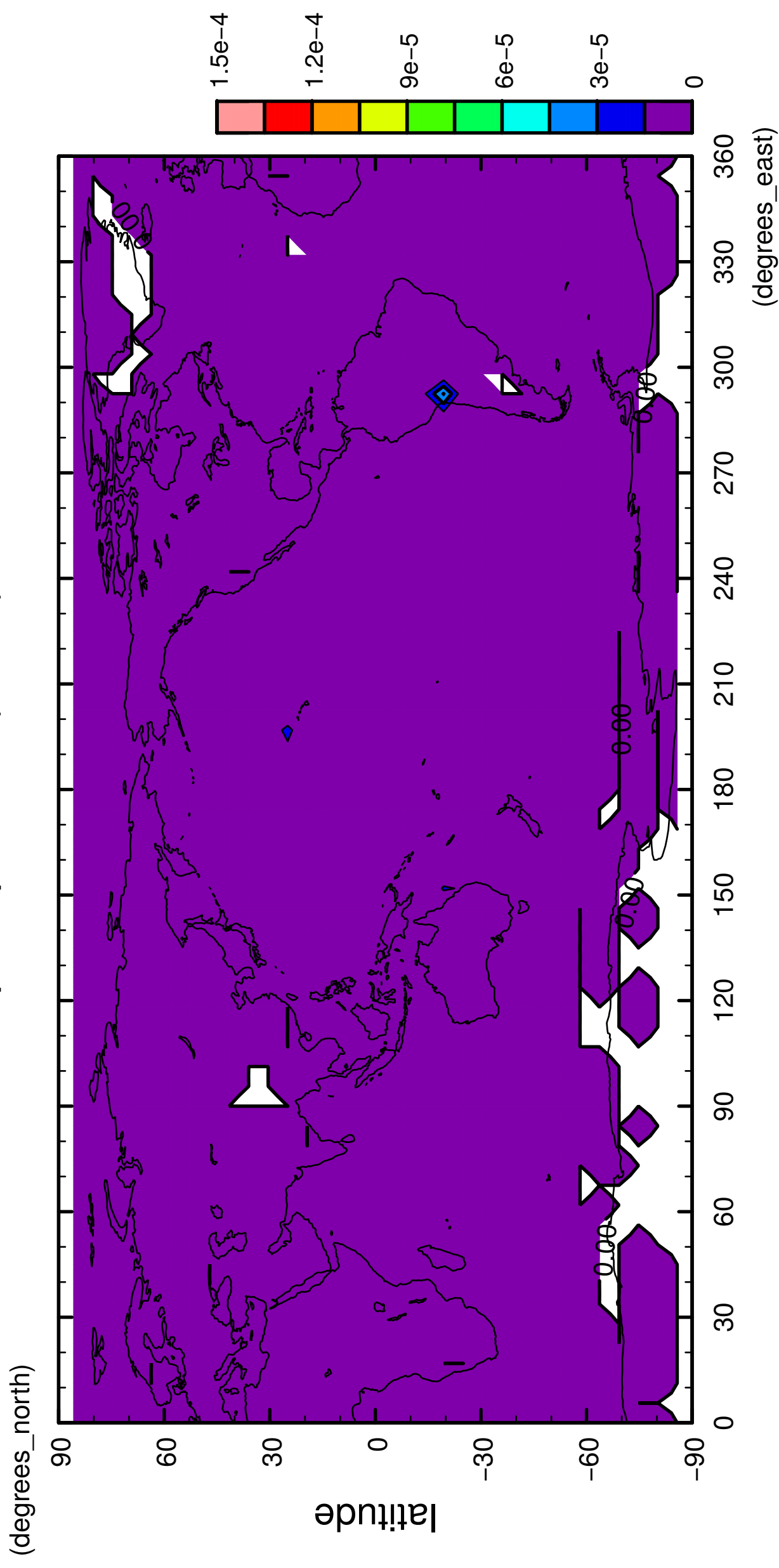
6/12

precipitation (snow)



7/12

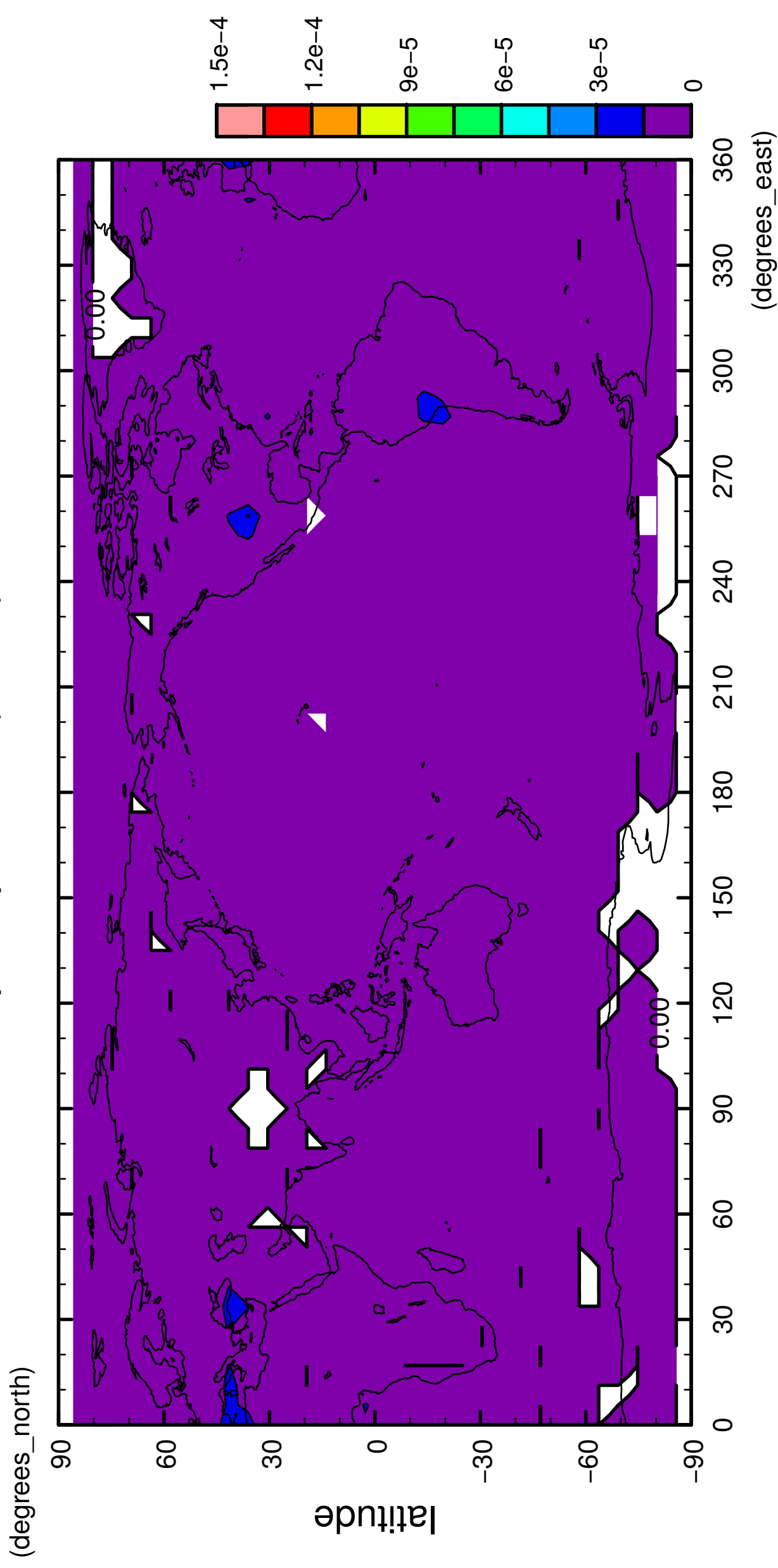
precipitation (snow)



longitude
CONTOUR INTERVAL = 1.500E-05

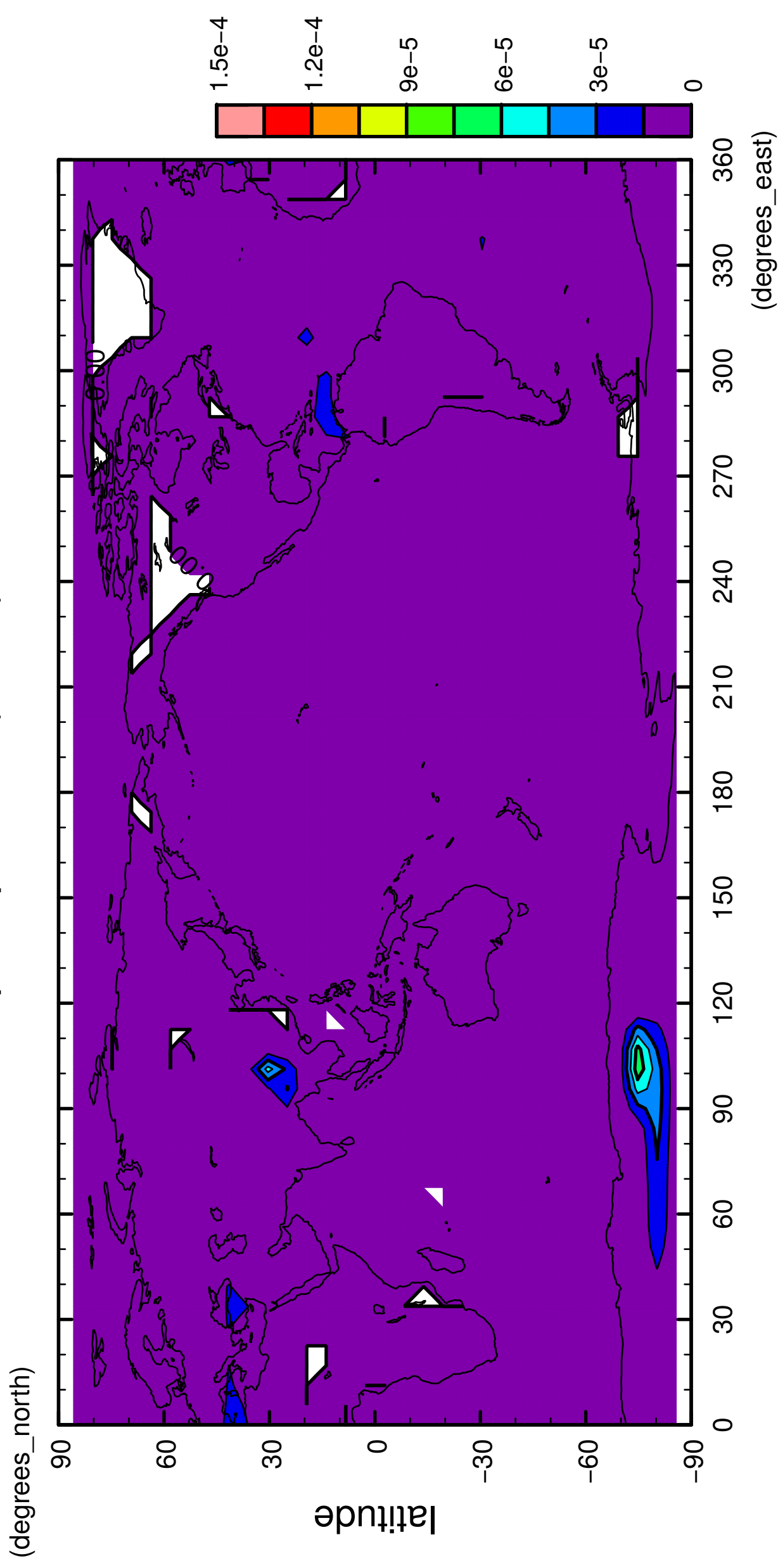
8/12

precipitation (snow)



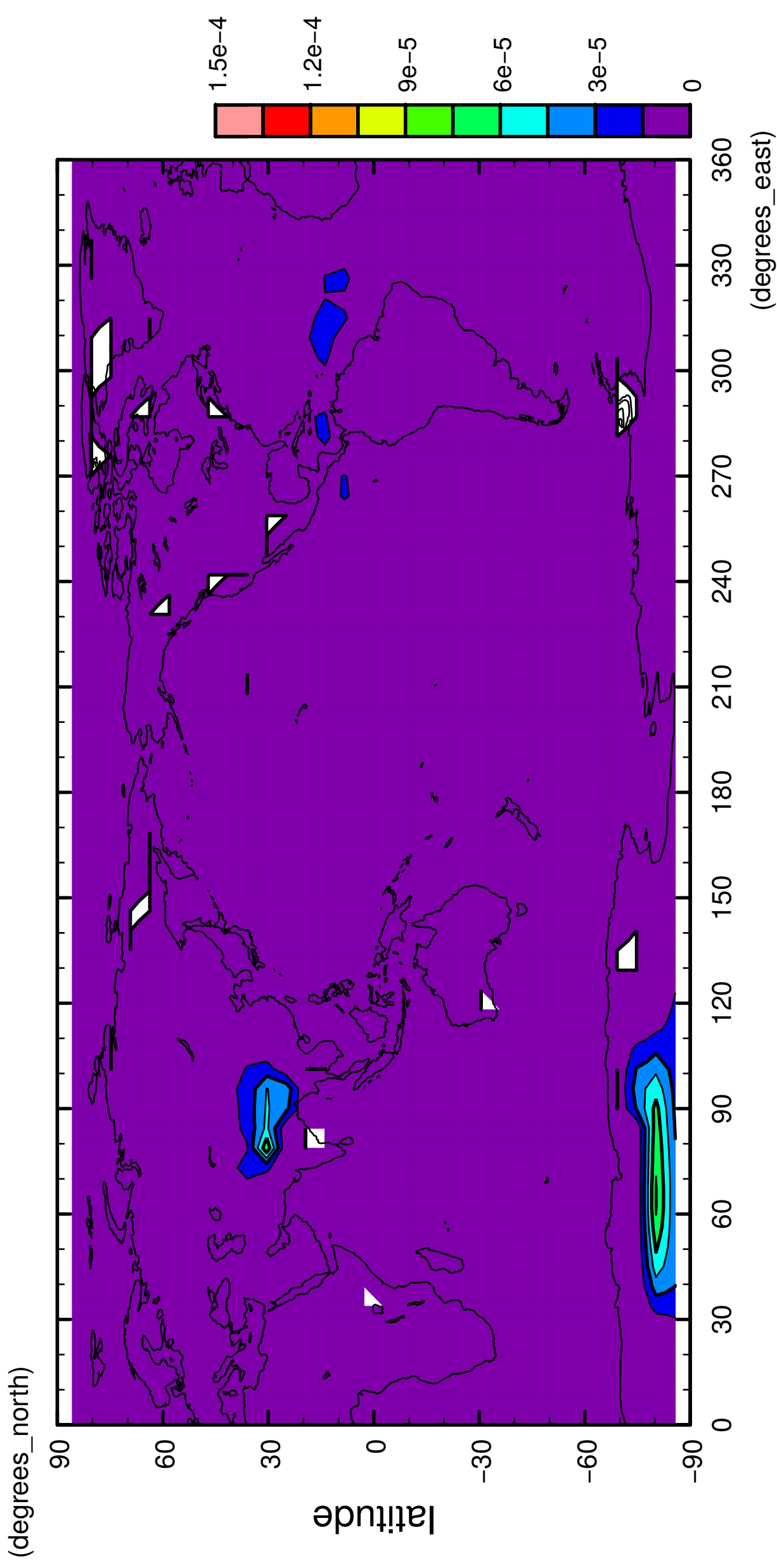
9/12

precipitation (snow)



10/12

precipitation (snow)



longitude
CONTOUR INTERVAL = 1.500×10^{-5}

11/12

precipitation (snow)

