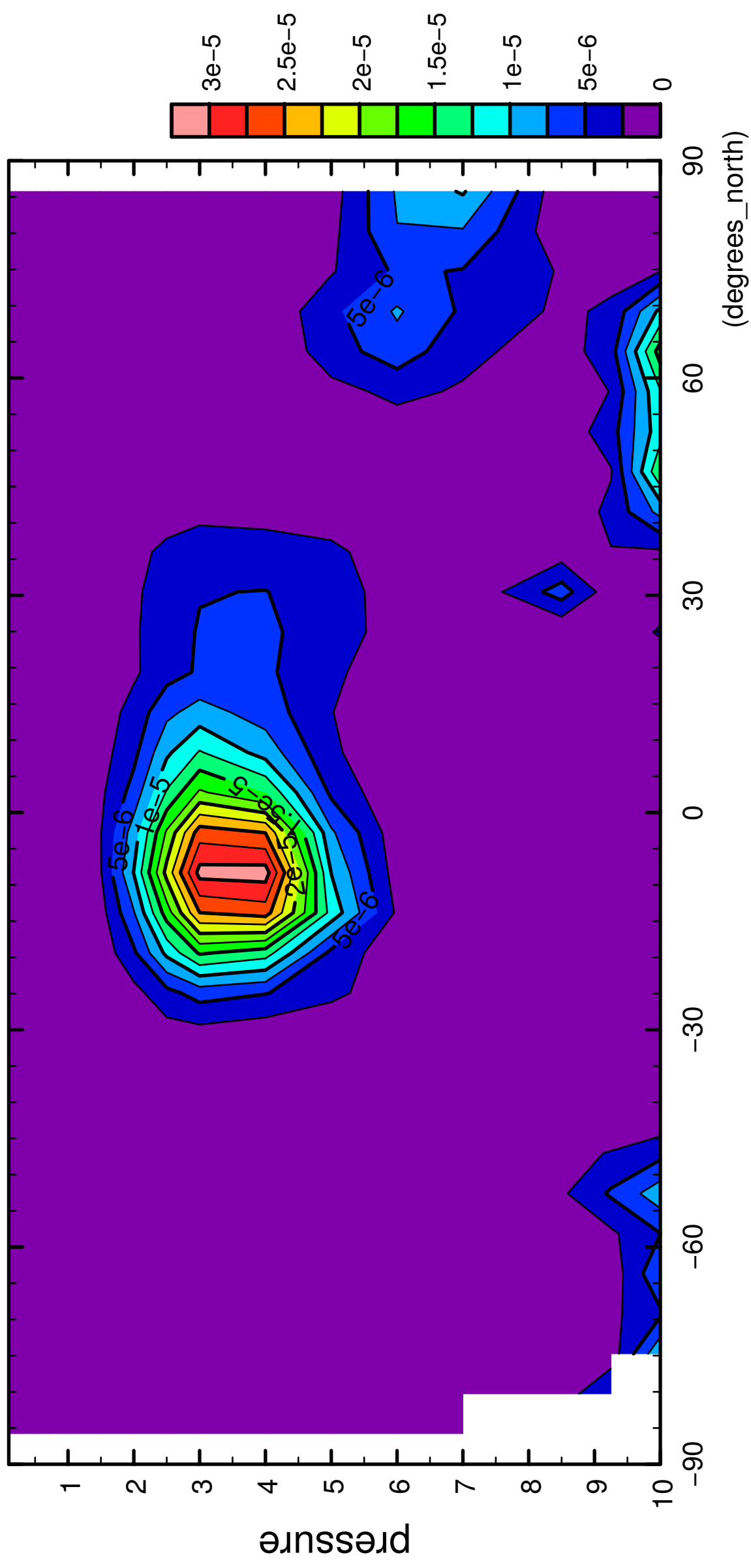


1/12

QH2OSol

( $\times 10^4$  Pa)

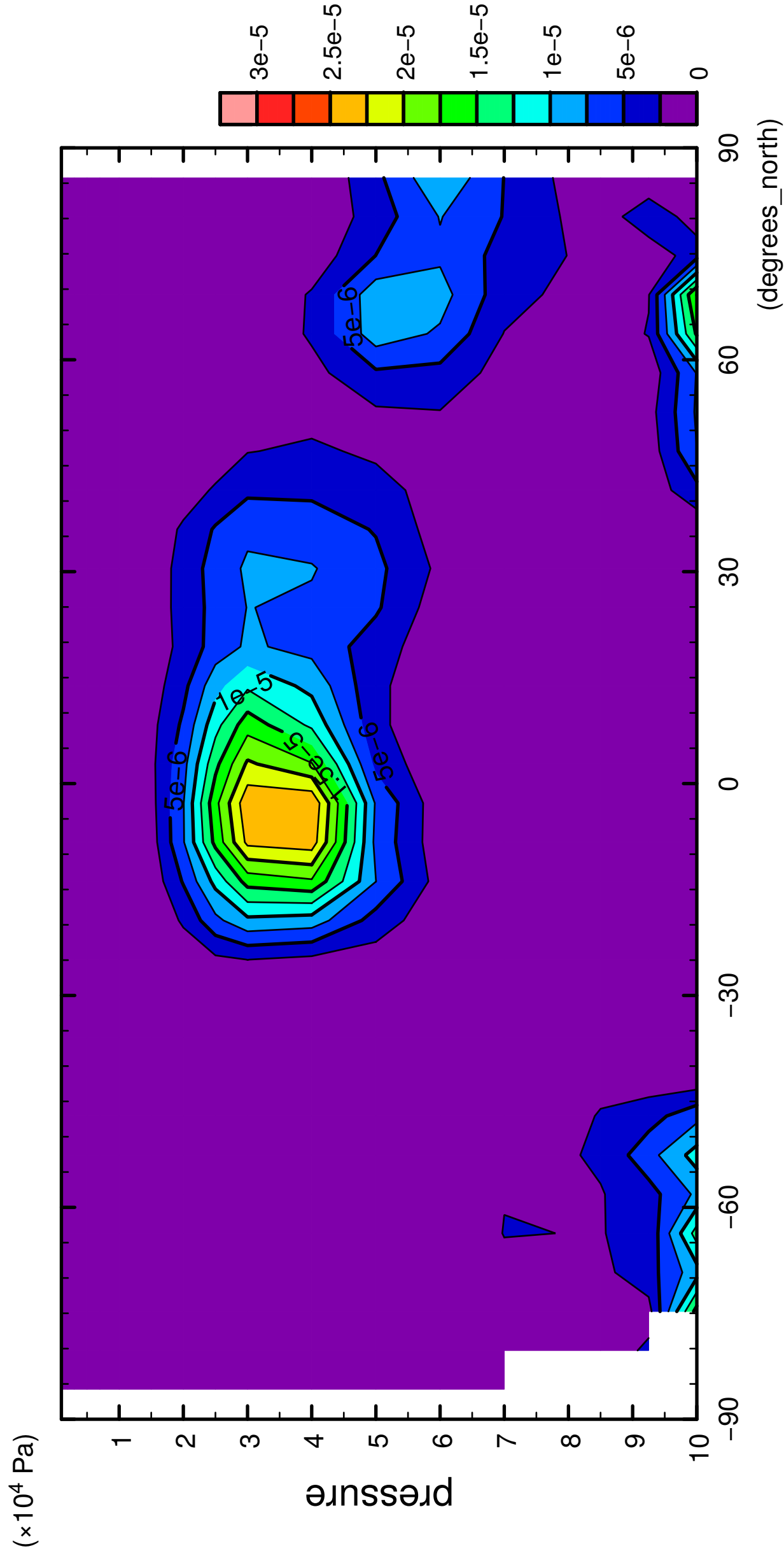


latitude

CONTOUR INTERVAL =  $2.500 \times 10^{-6}$

2/12

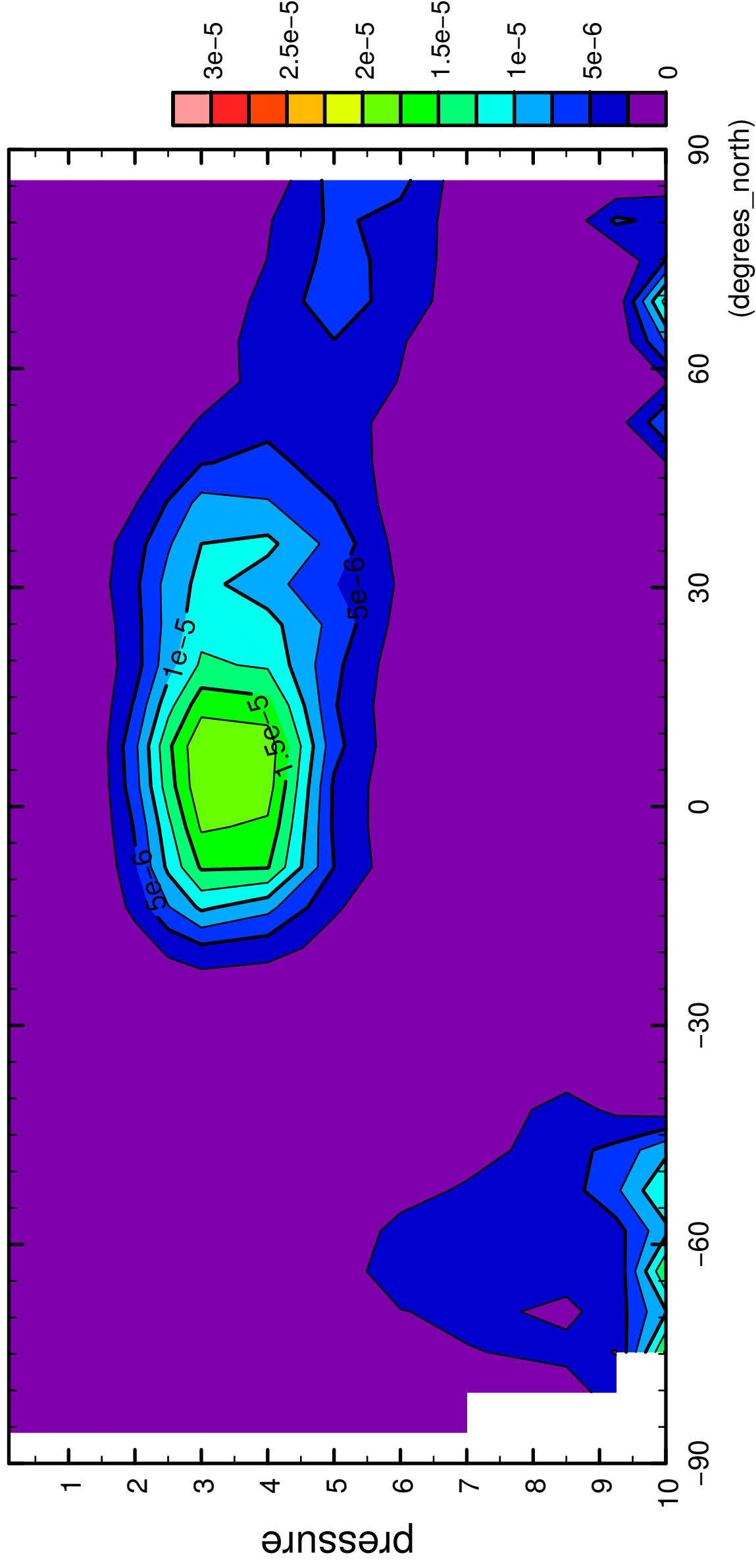
QH2OSol



3/12

QH2OSol

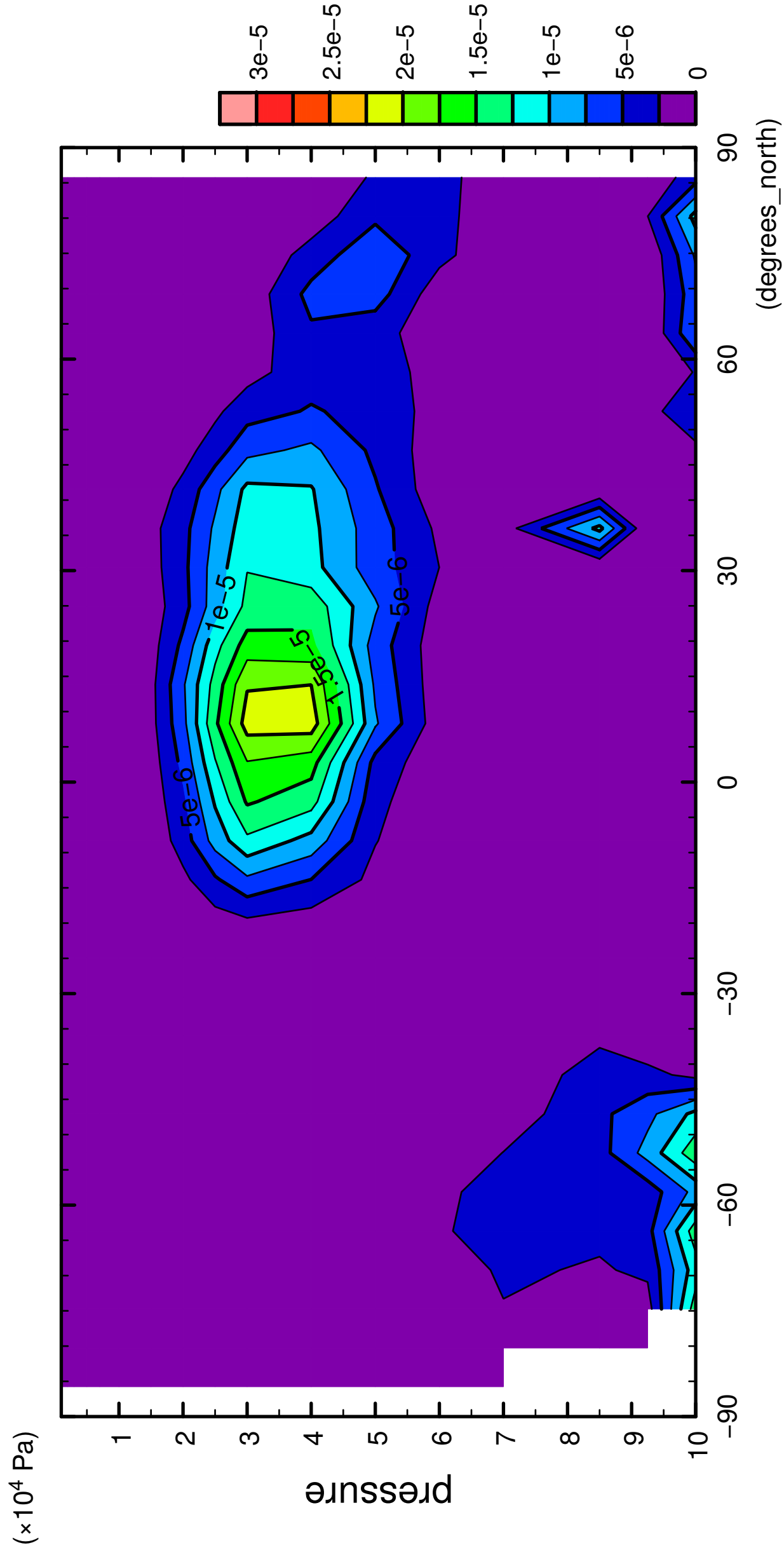
( $\times 10^4$  Pa)



CONTOUR INTERVAL = 2.500E-06

4/12

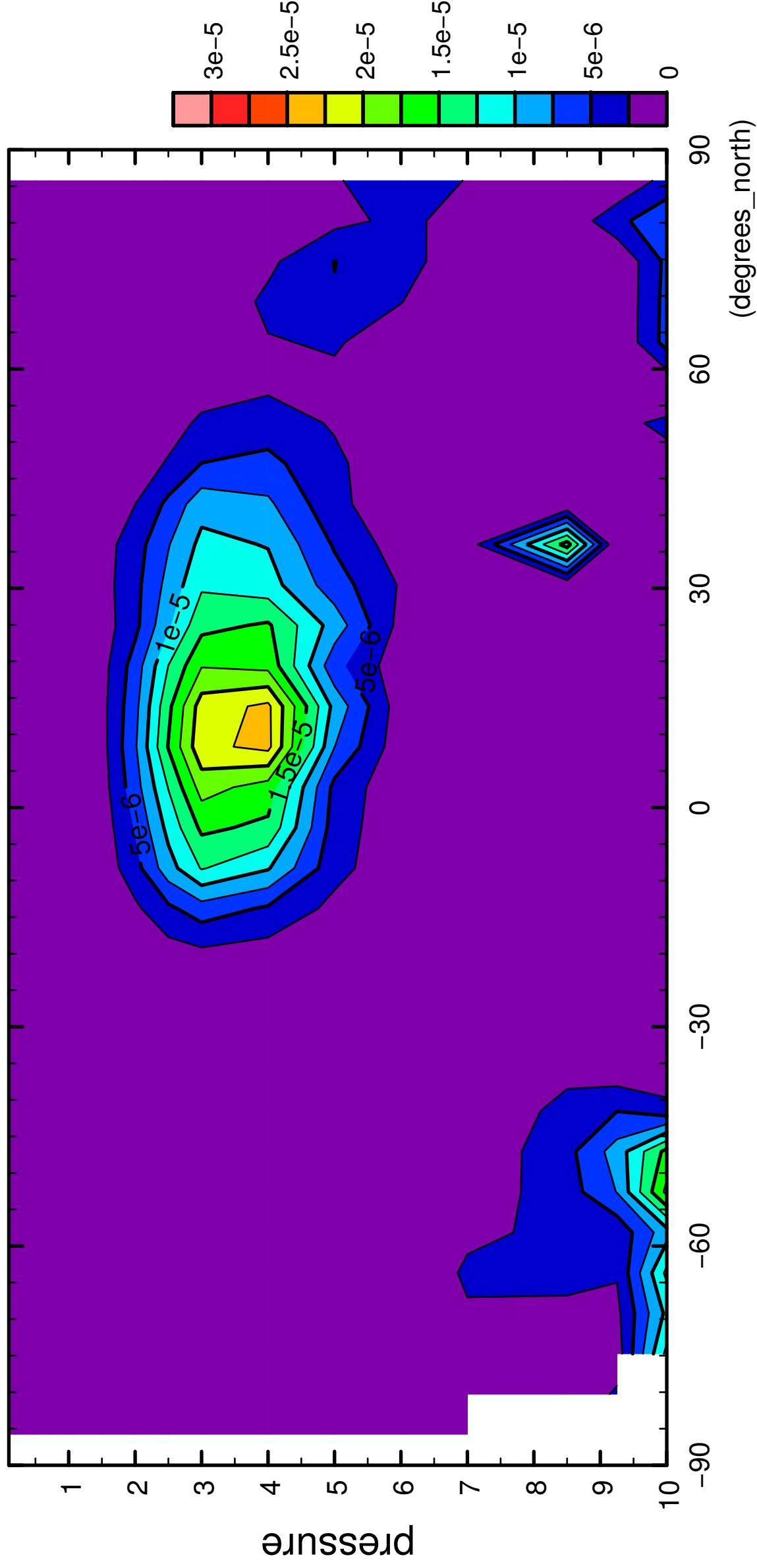
QH2OSol



5/12

QH2OSol

( $\times 10^4$  Pa)



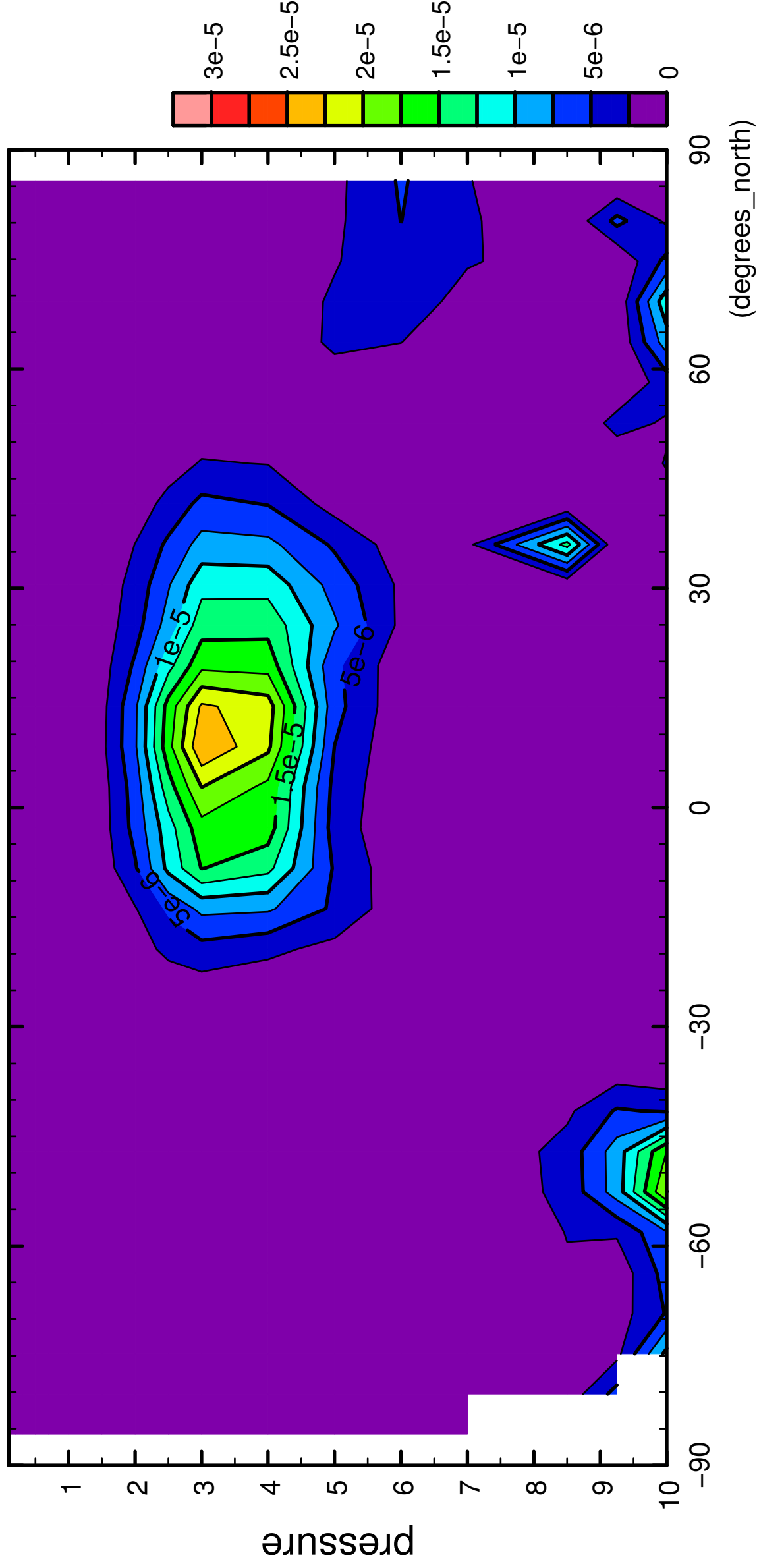
latitude

CONTOUR INTERVAL =  $2.500 \times 10^{-6}$

6/12

QH2OSol

( $\times 10^4$  Pa)

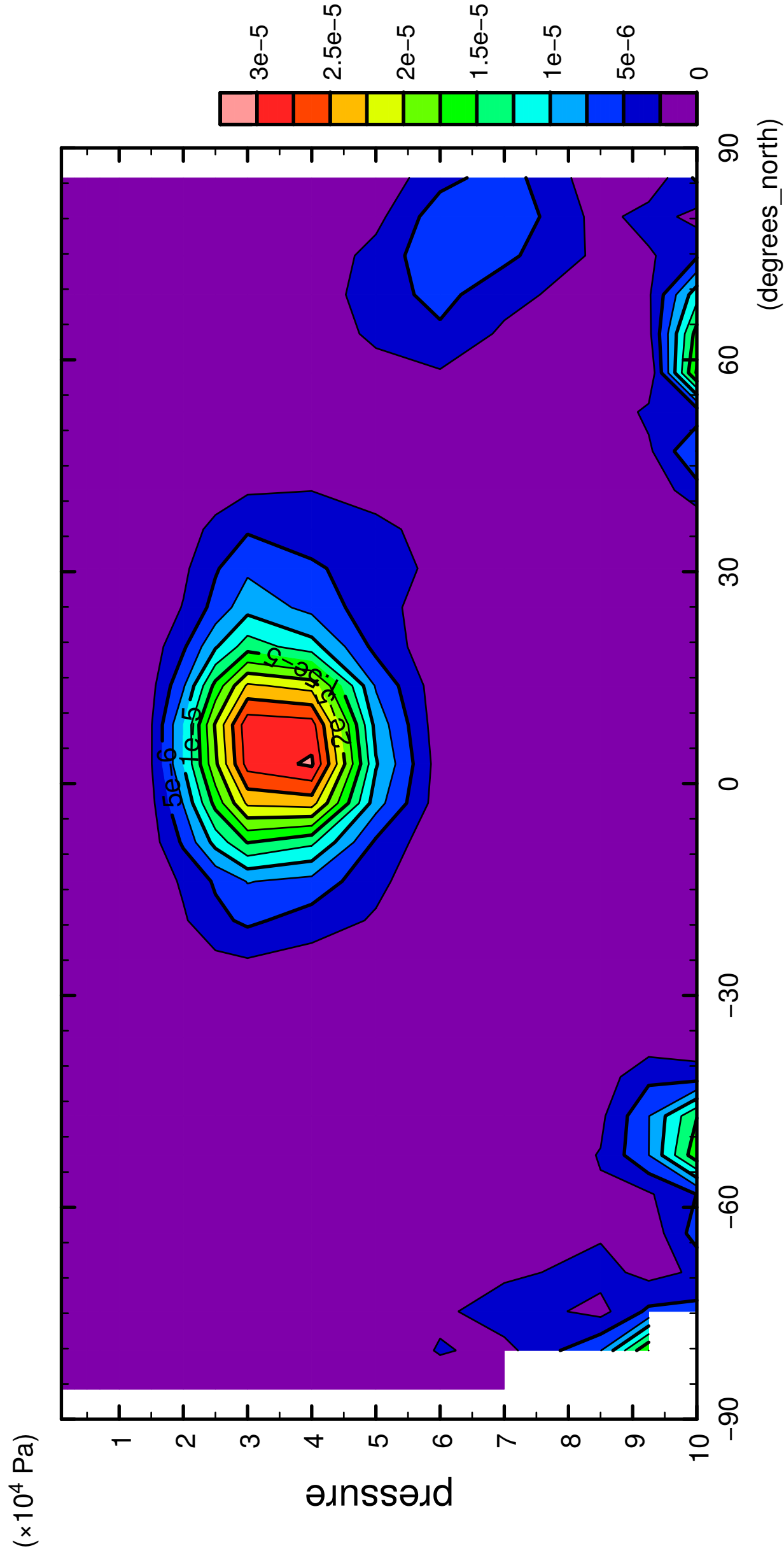


latitude

CONTOUR INTERVAL =  $2.500E-06$

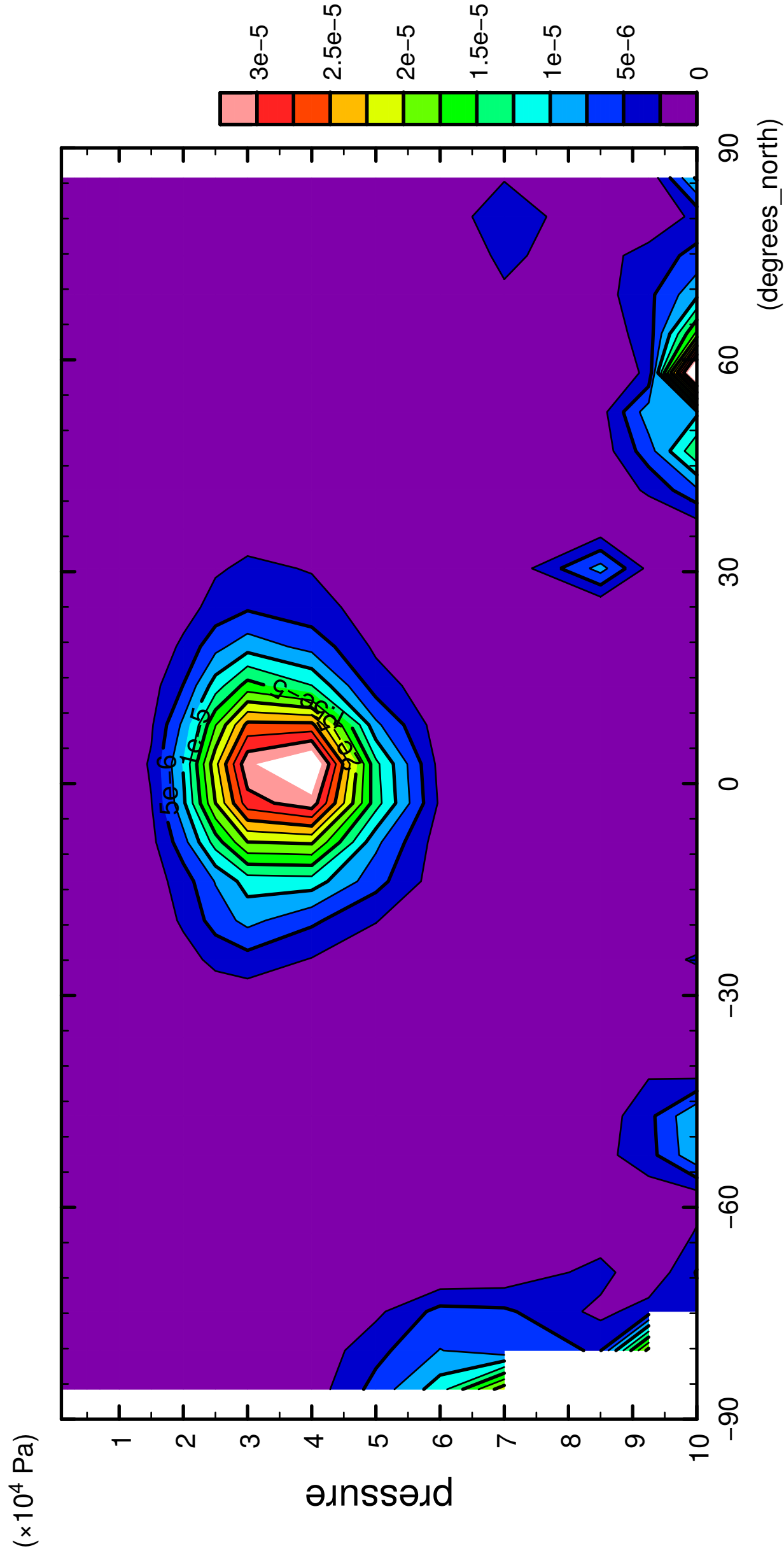
7/12

QH2OSol



8/12

QH2OSol

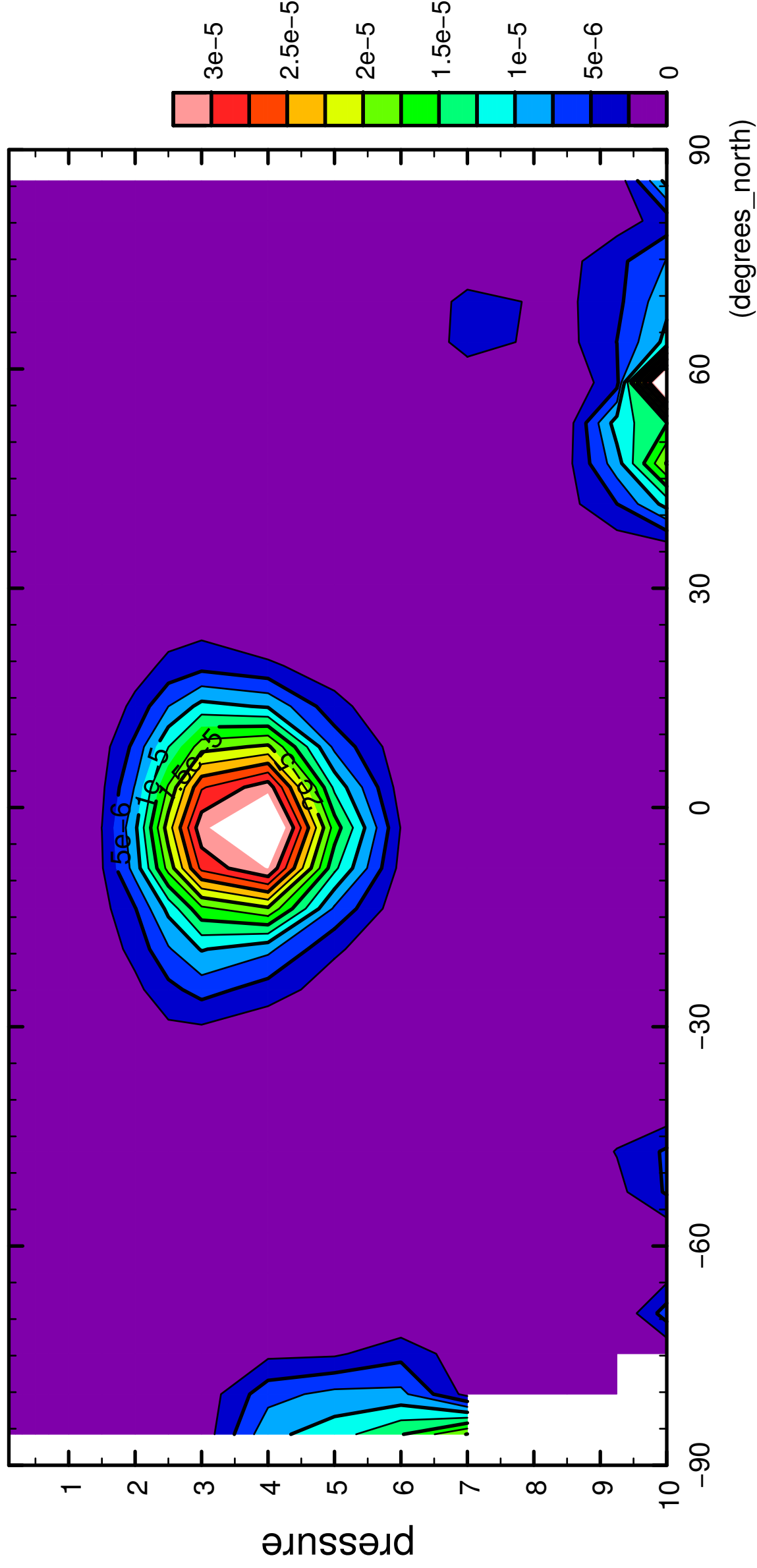




9/12

QH2OSol

( $\times 10^4$  Pa)

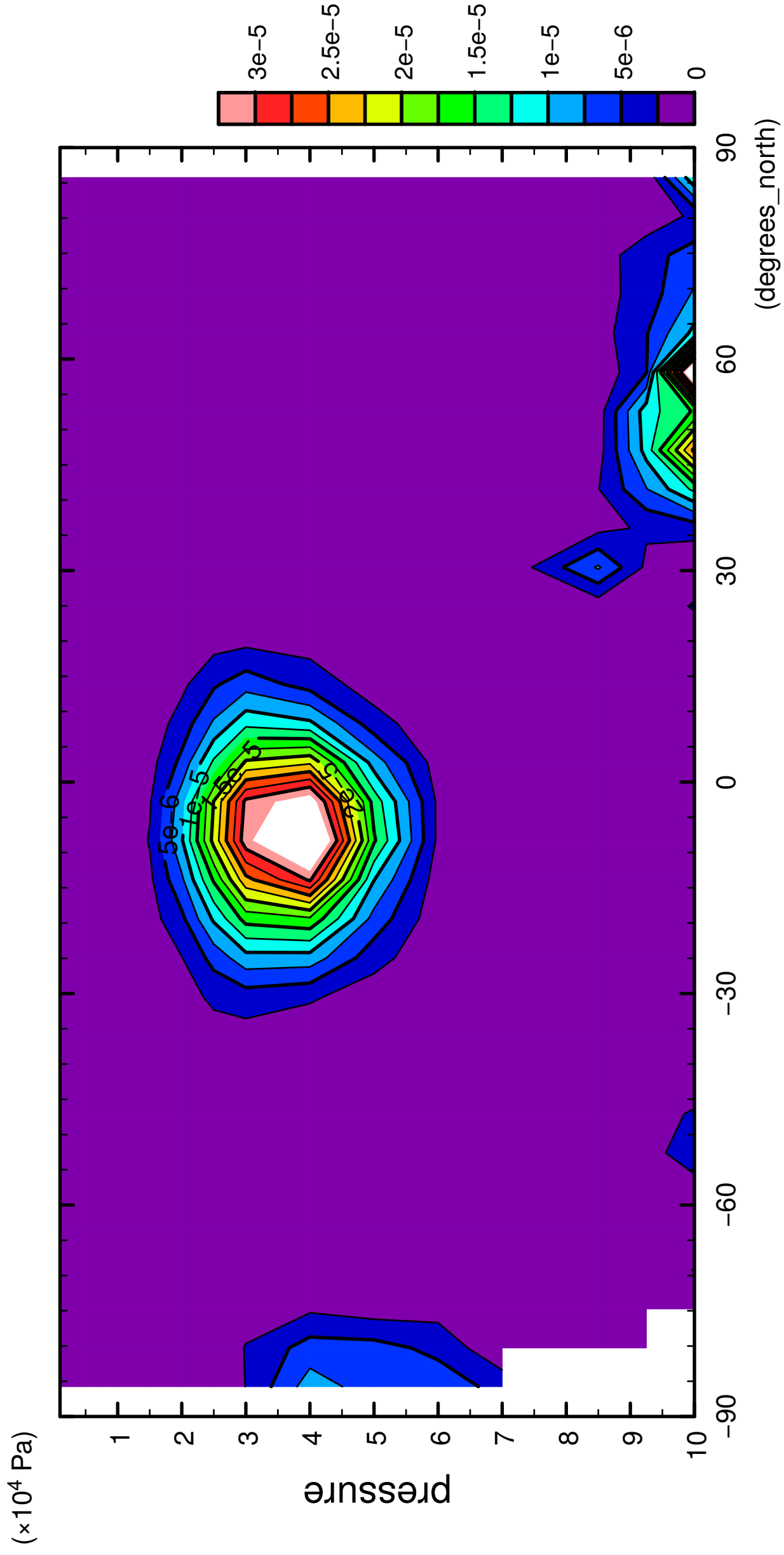


latitude

CONTOUR INTERVAL =  $2.500 \times 10^{-6}$

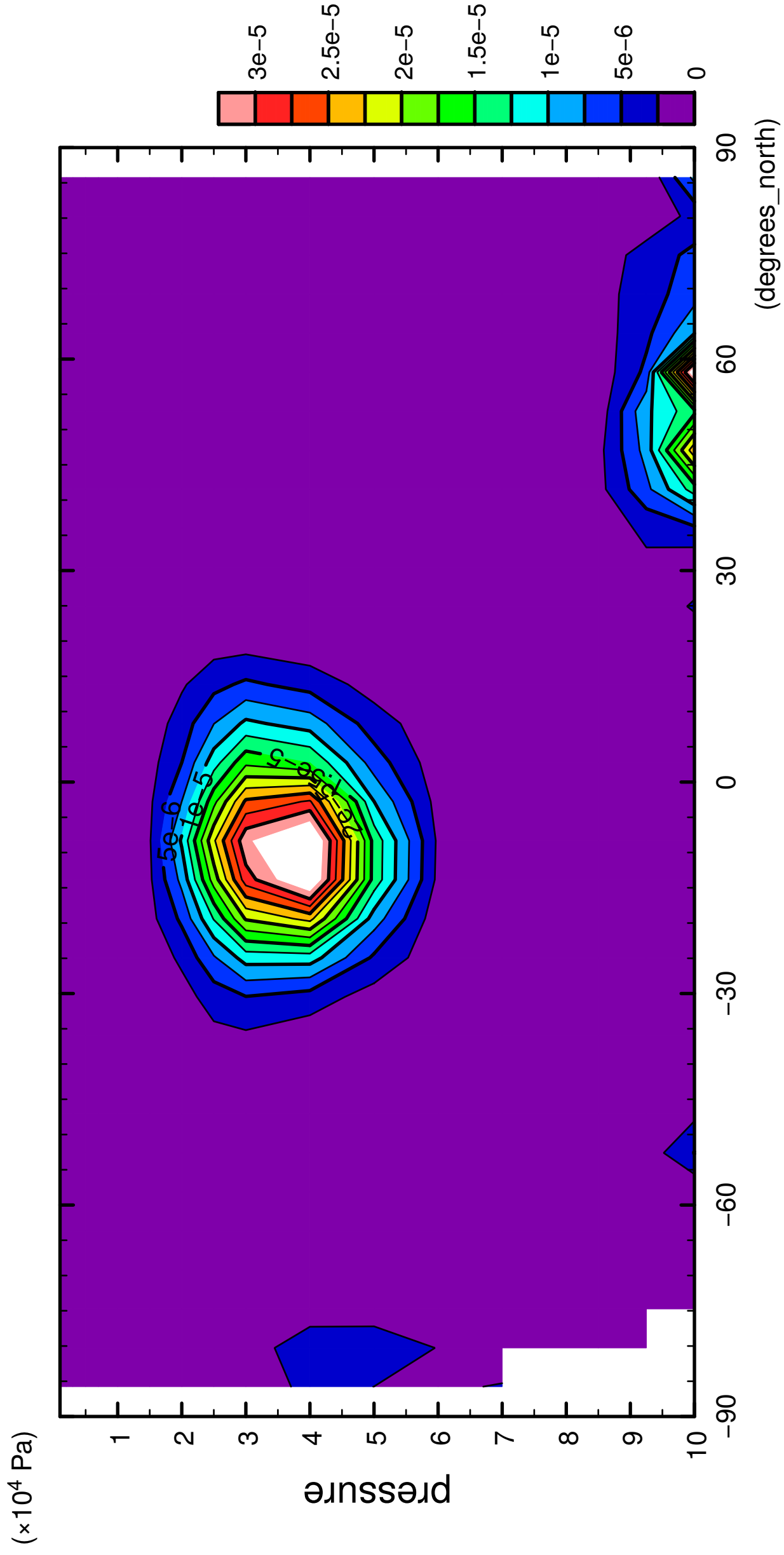
10/12

QH2OSol



11/12

QH2OSol



12/12

QH2OSol

