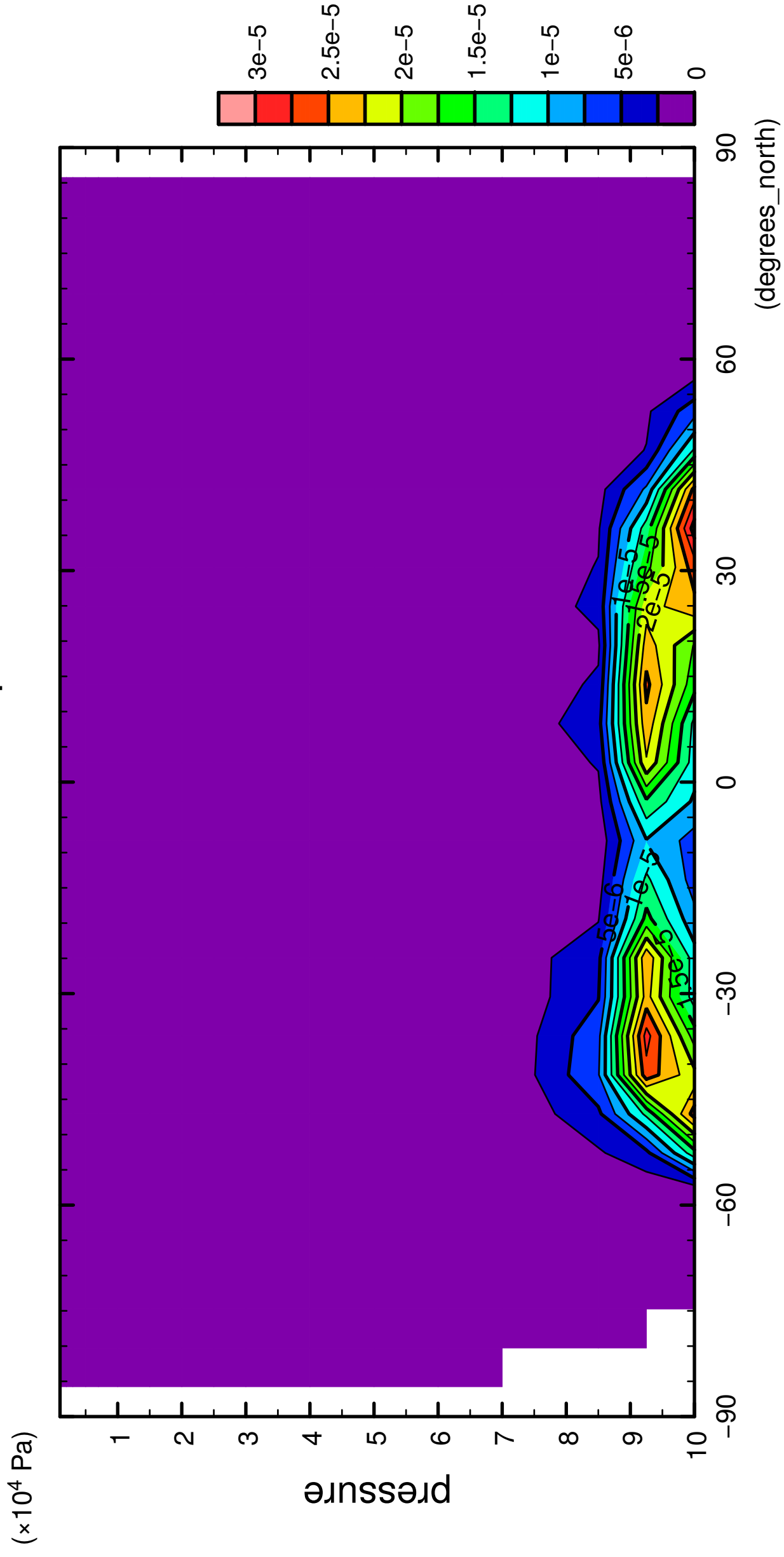


1/12

QH2OLiq

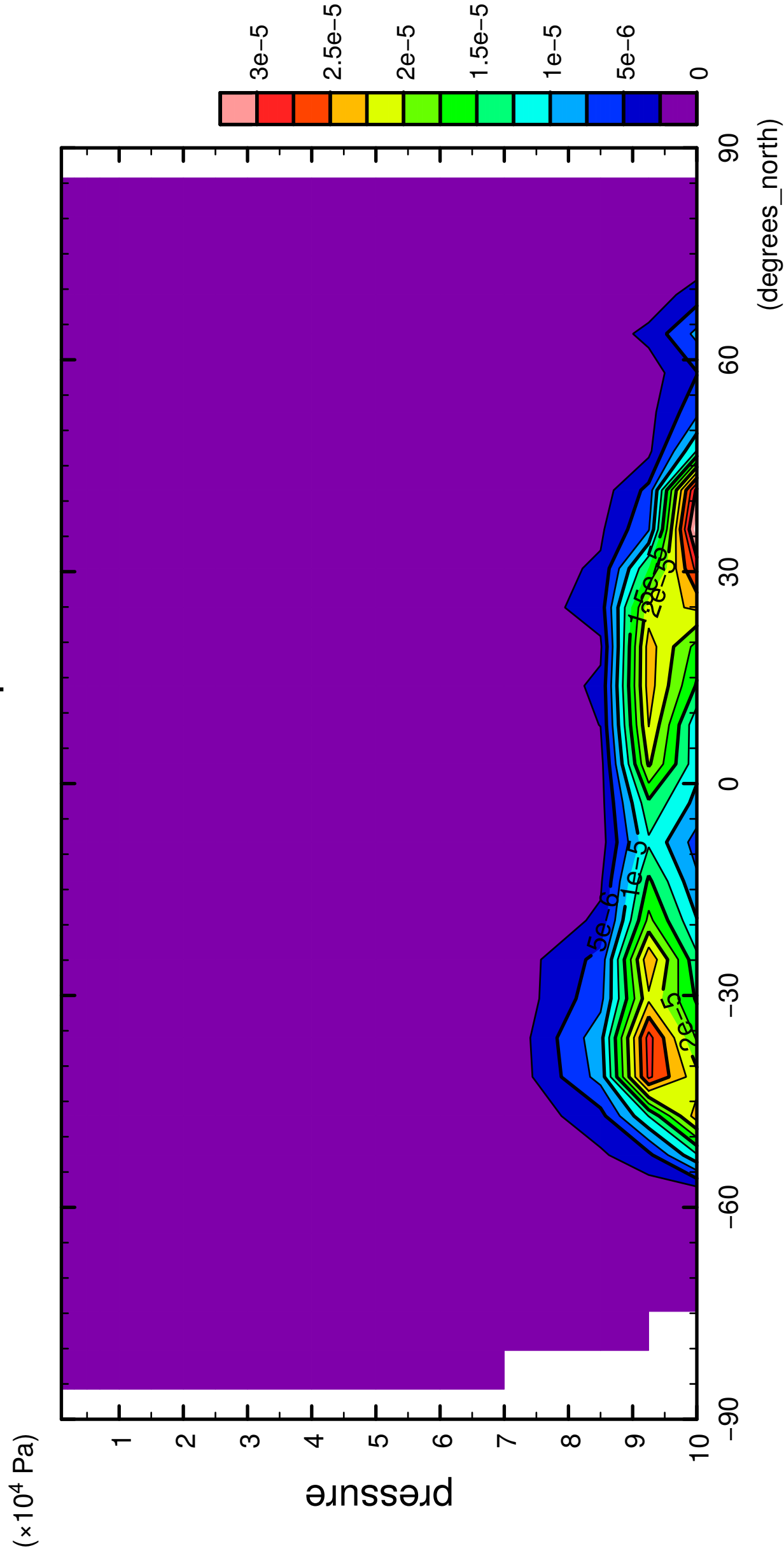


latitude

CONTOUR INTERVAL = 2.500E-06

2/12

QH2OLiq

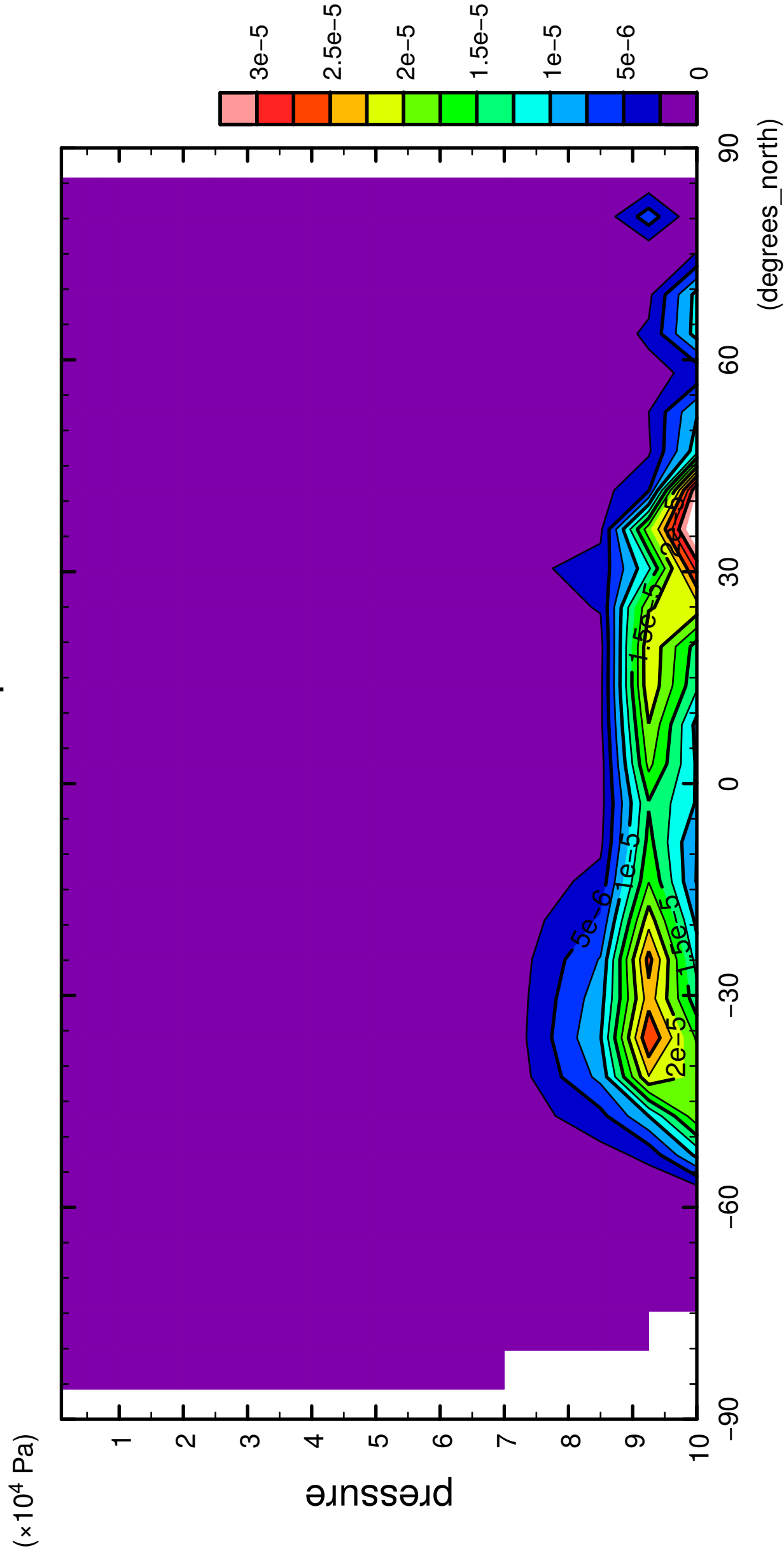


latitude

CONTOUR INTERVAL = 2.500E-06

3/12

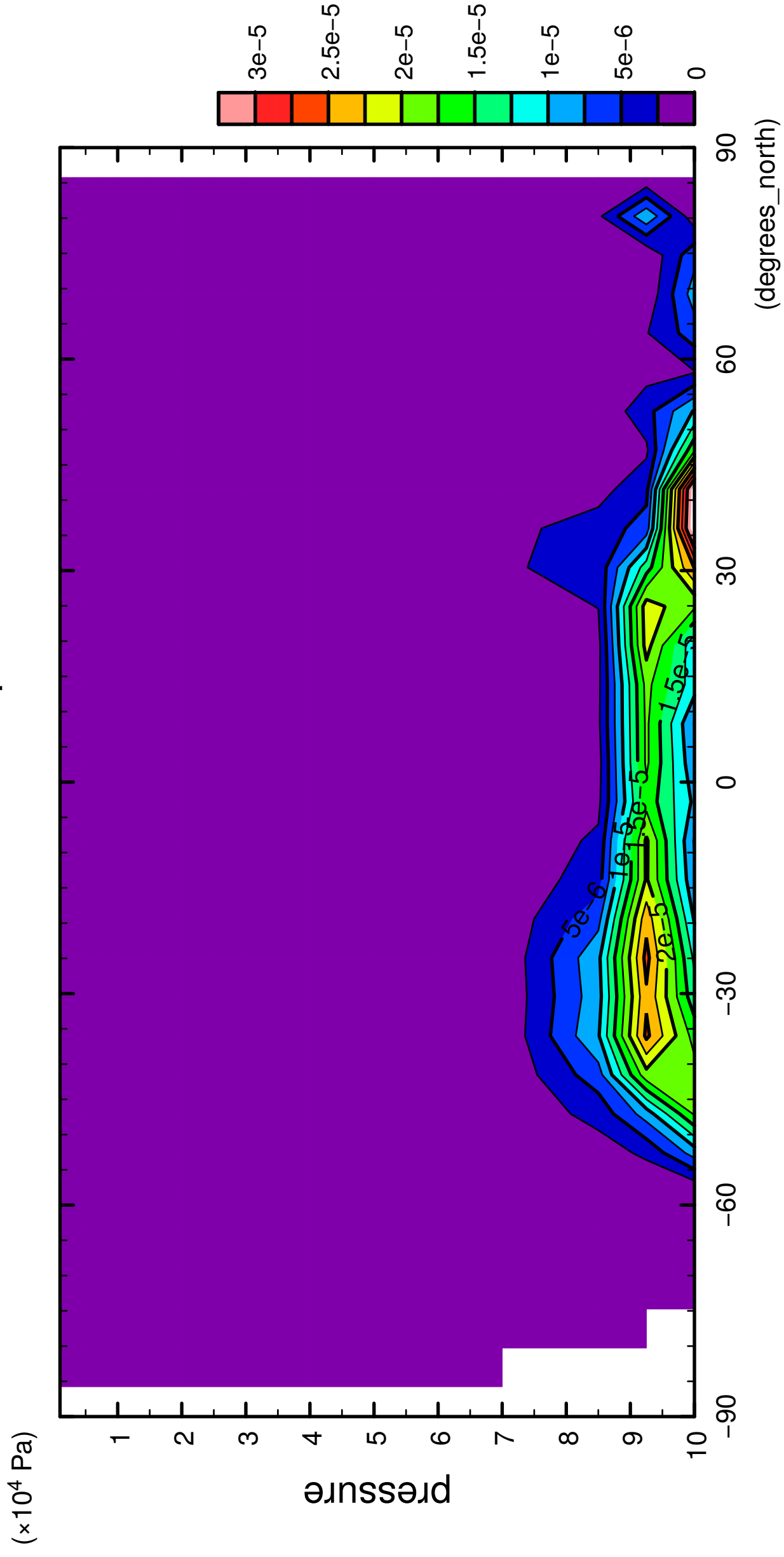
QH2OLiq



CONTOUR INTERVAL = 2.500E-06

4/12

QH2OLiq



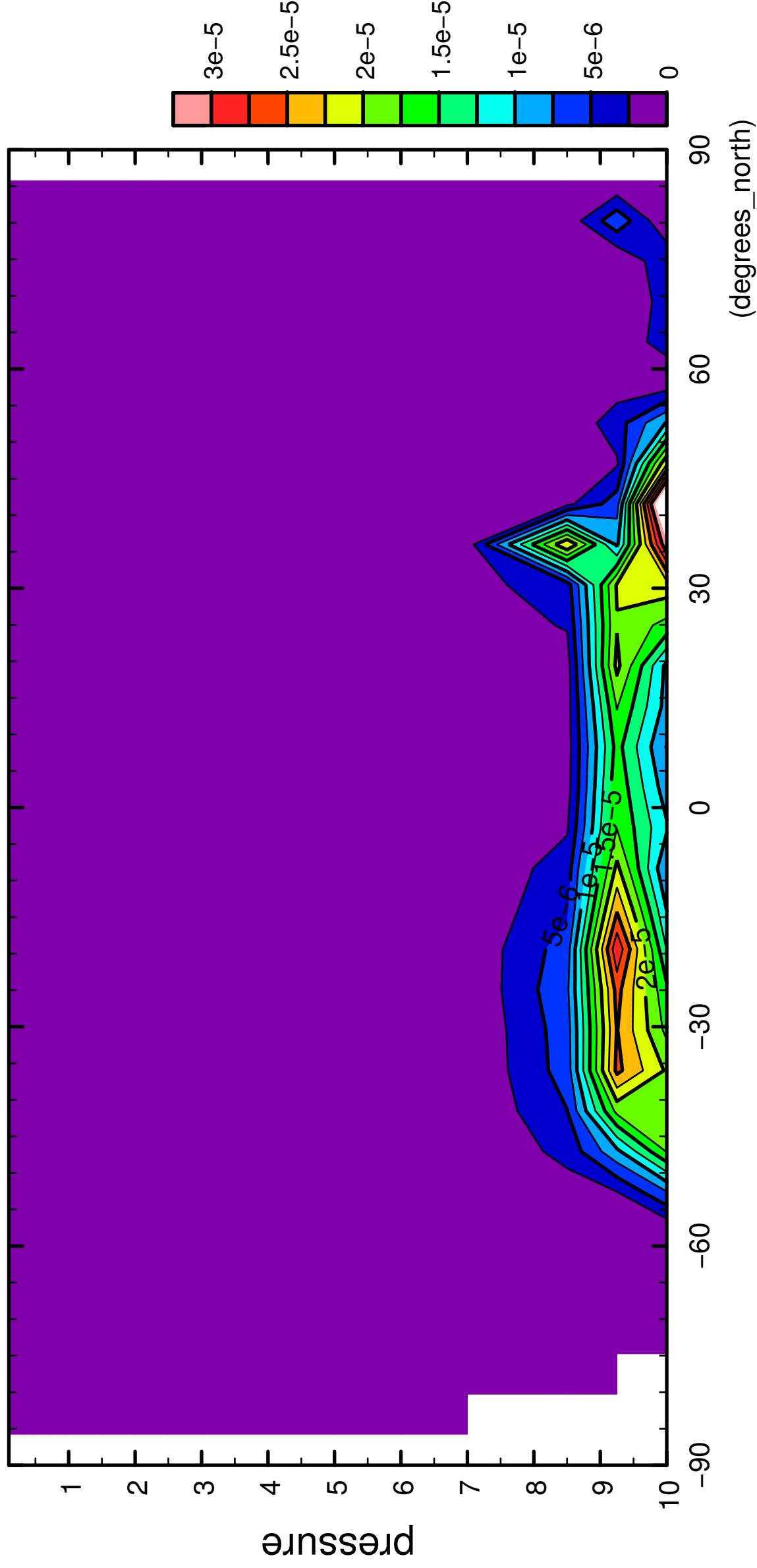
latitude

CONTOUR INTERVAL = 2.500E-06

5/12

QH2OLiq

($\times 10^4$ Pa)



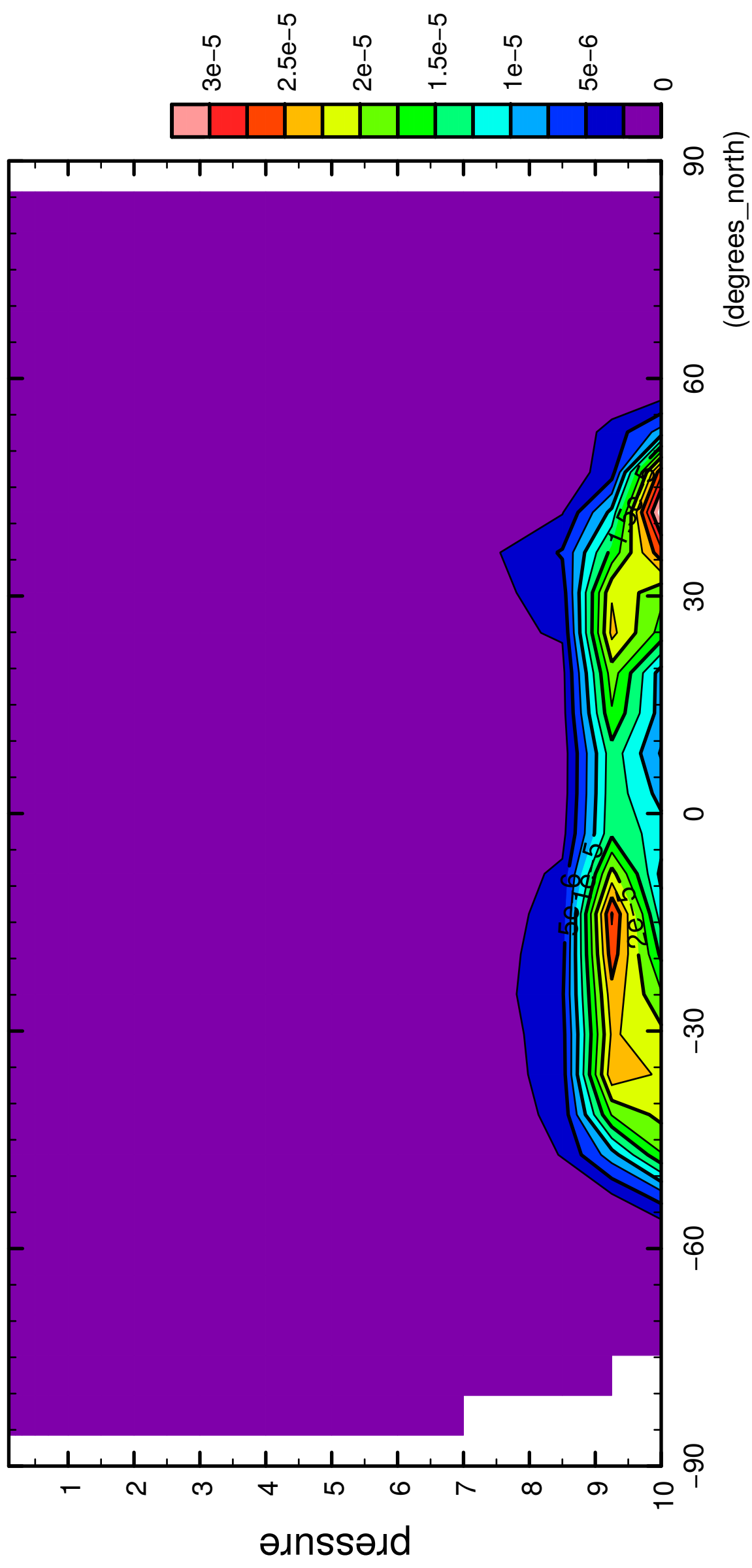
latitude

CONTOUR INTERVAL = 2.500×10^{-6}

6/12

QH2OLiq

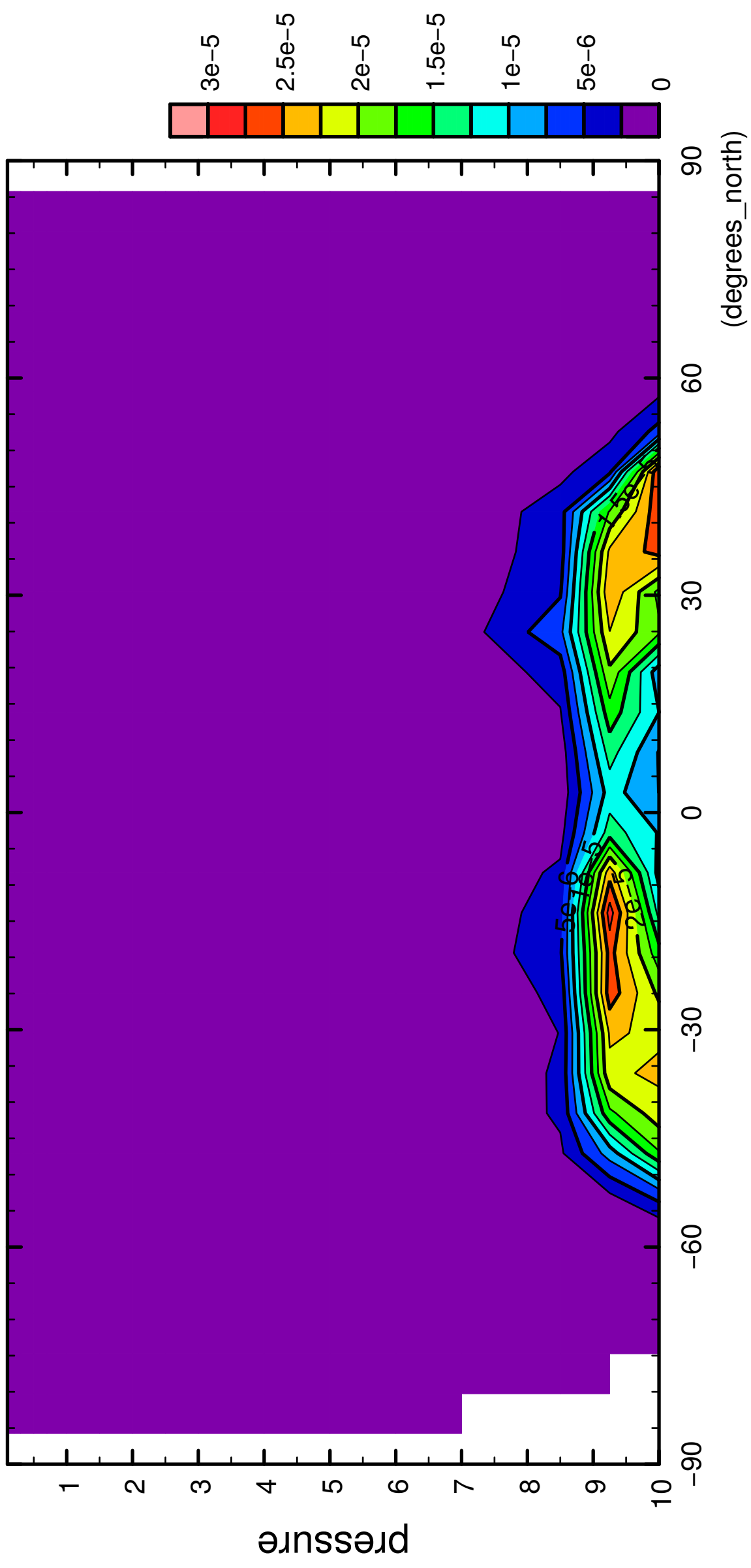
($\times 10^4$ Pa)



7/12

QH2OLiq

($\times 10^4$ Pa)

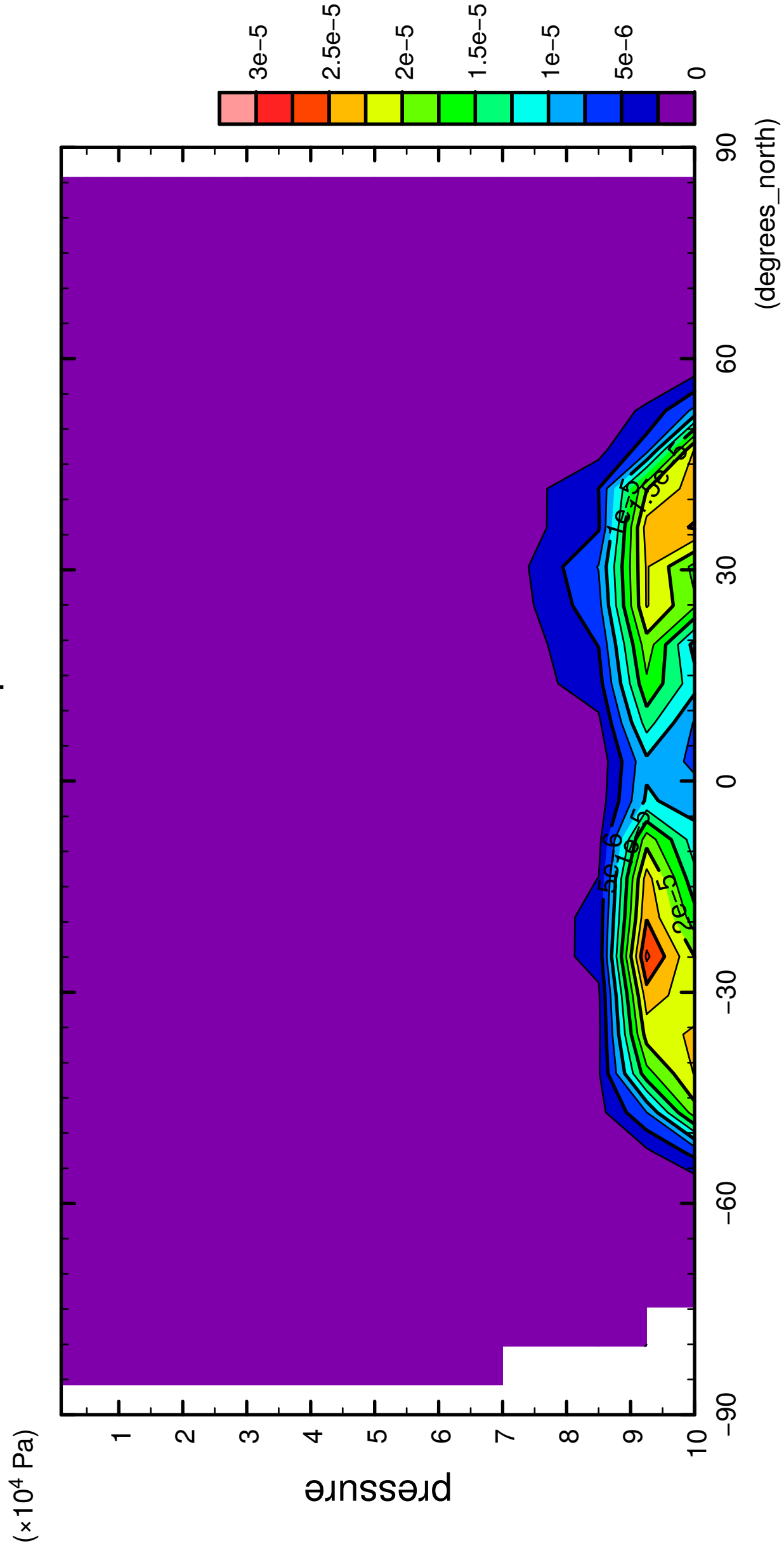


latitude

CONTOUR INTERVAL = 2.500×10^{-6}

8/12

QH2OLiq

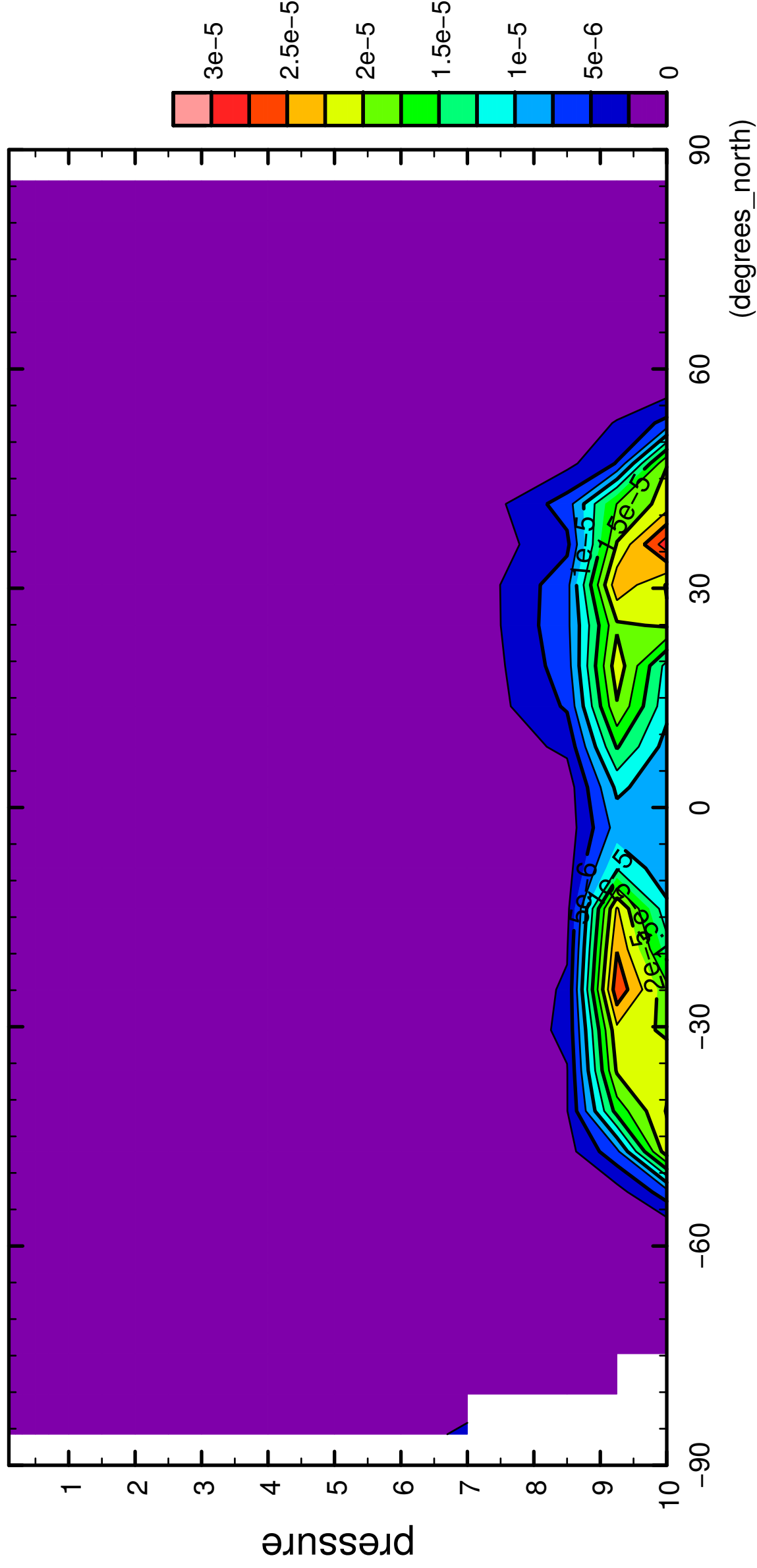


CONTOUR INTERVAL = 2.500E-06

9/12

QH2OLiq

($\times 10^4$ Pa)

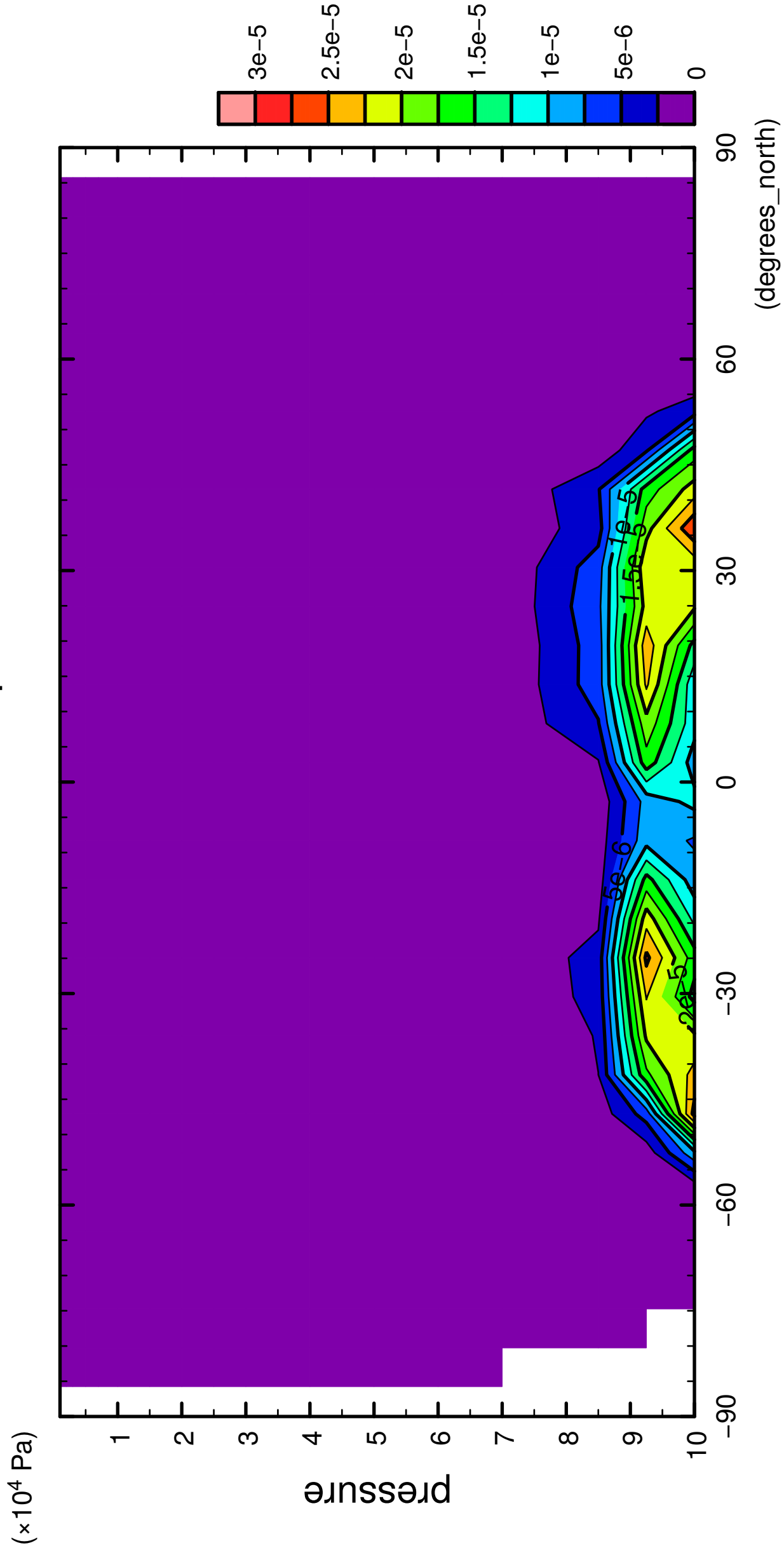


latitude

CONTOUR INTERVAL = 2.500E-06

10/12

QH2OLiq

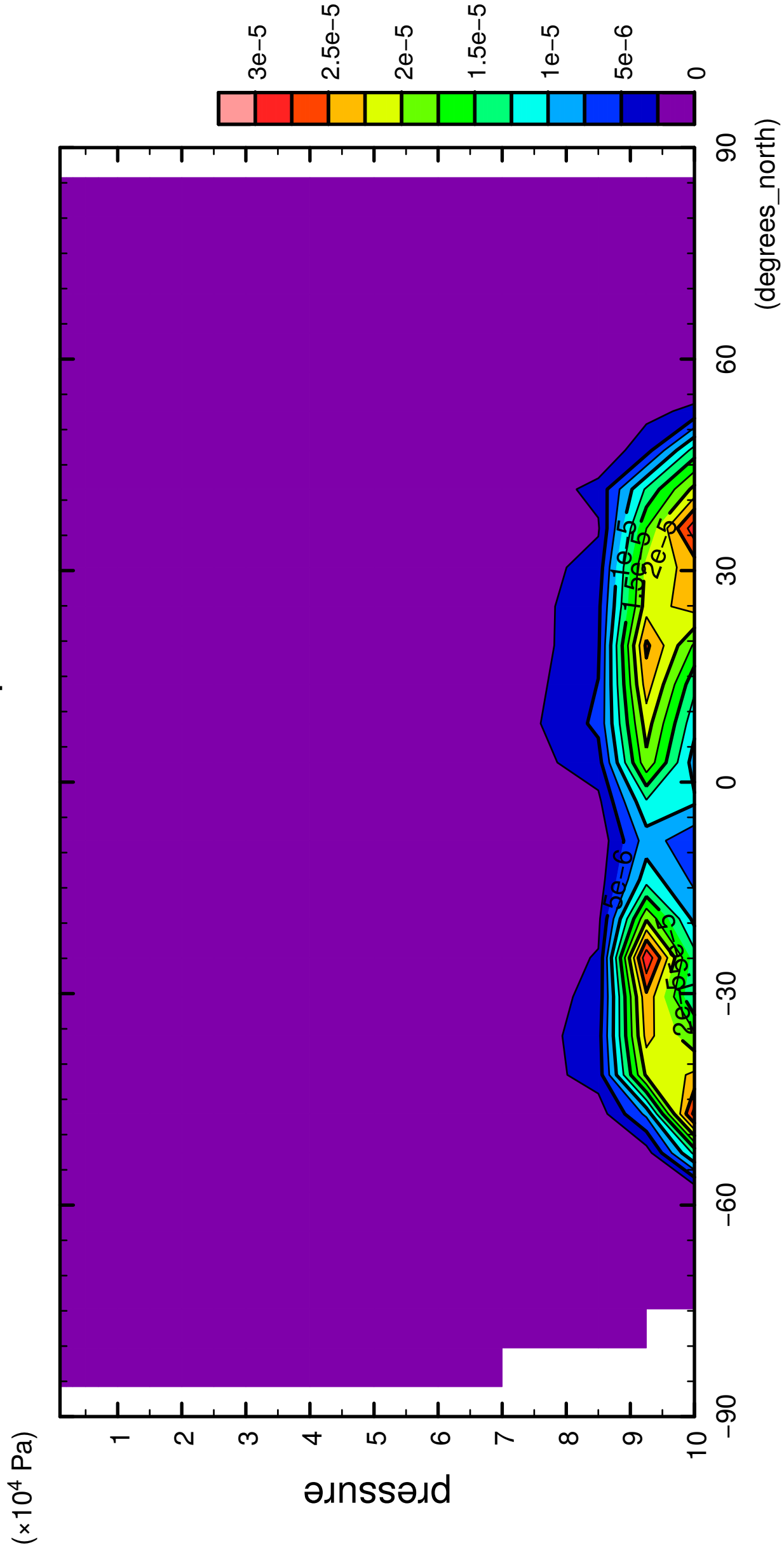


latitude

CONTOUR INTERVAL = 2.500E-06

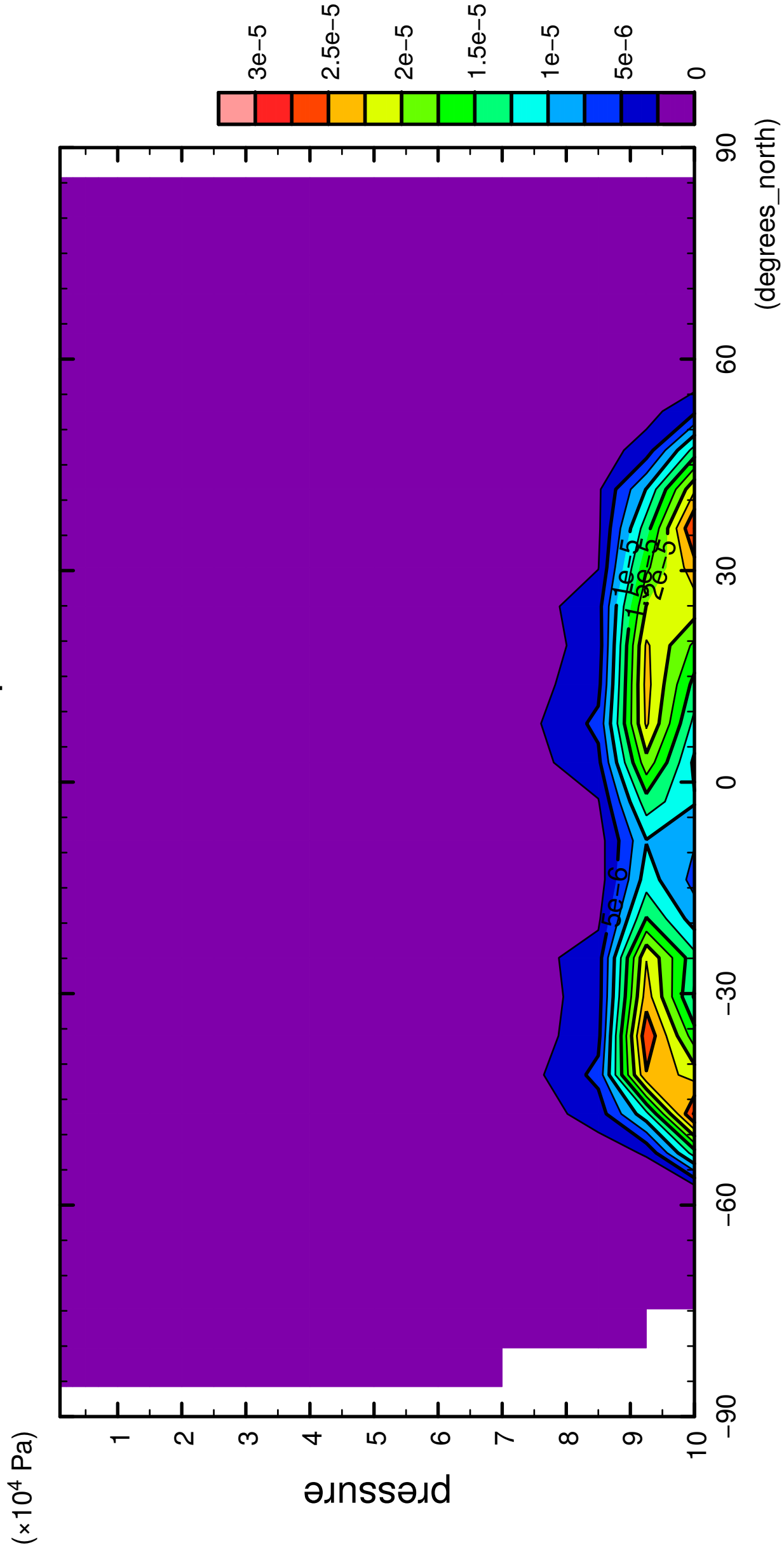
11/12

QH2OLiq



12/12

QH2OLiq



latitude

CONTOUR INTERVAL = 2.500E-06