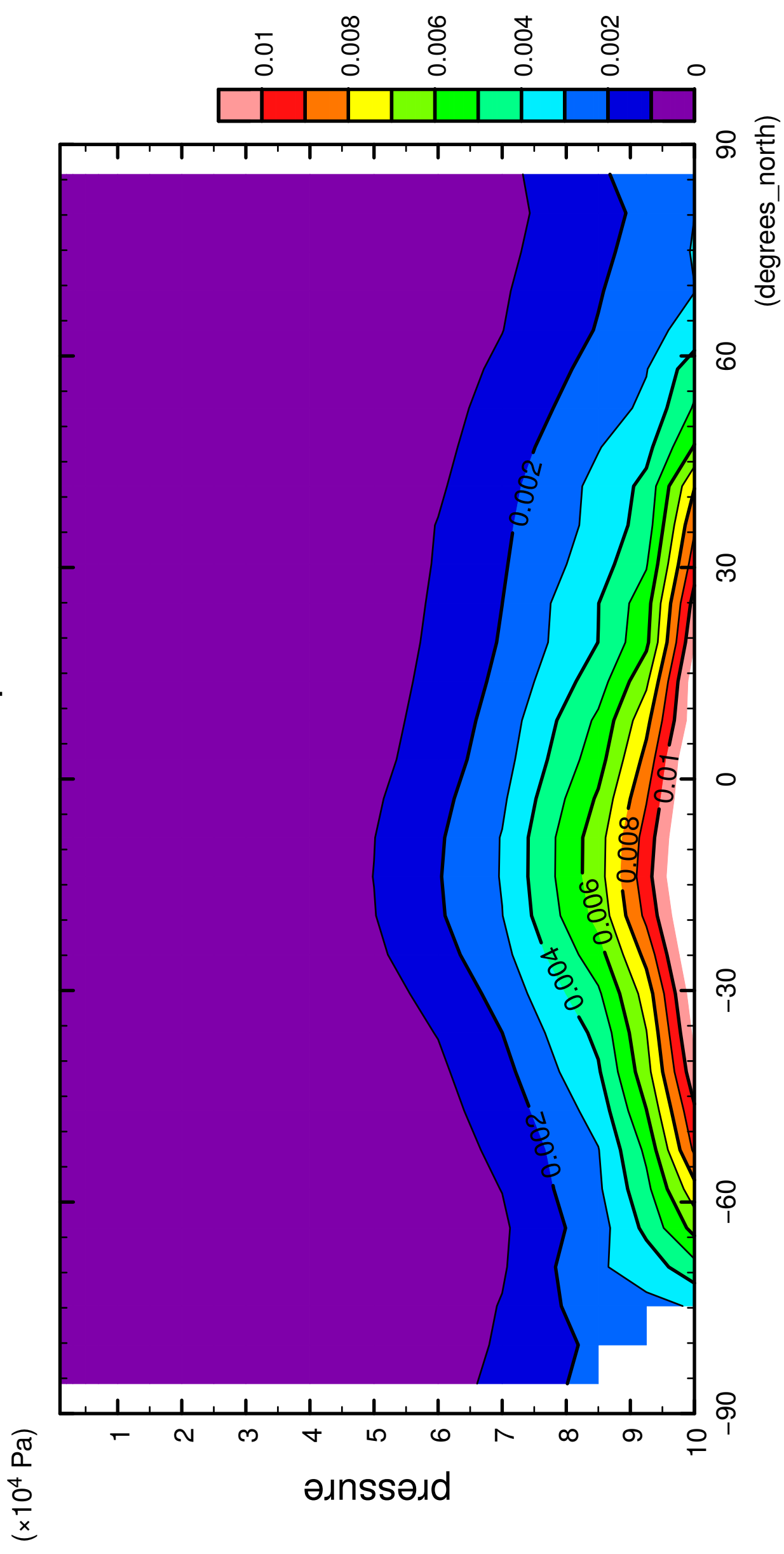


1/12

QH2OVap

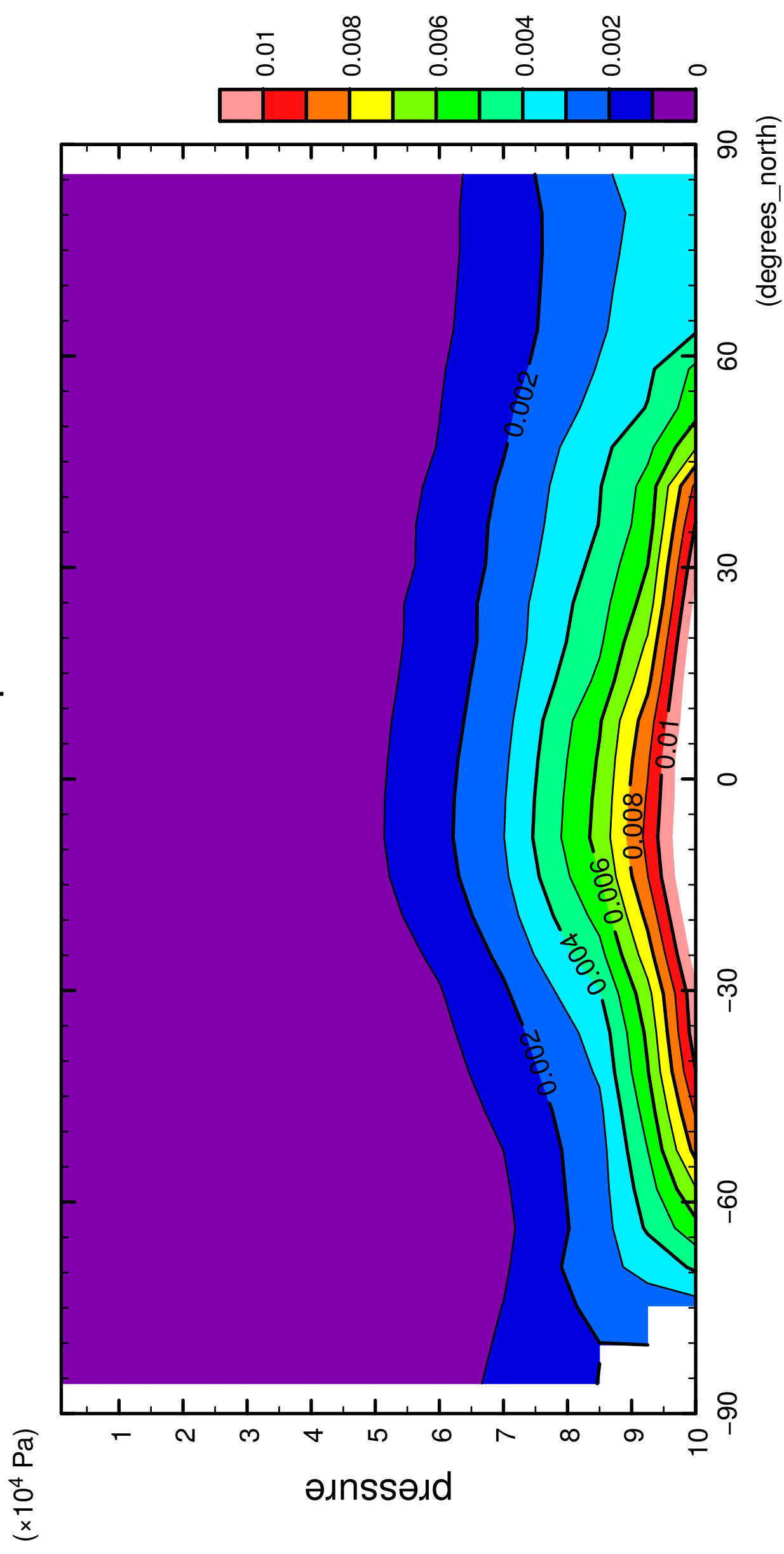


latitude

CONTOUR INTERVAL = 1.000E-03

2/12

QH2OVap

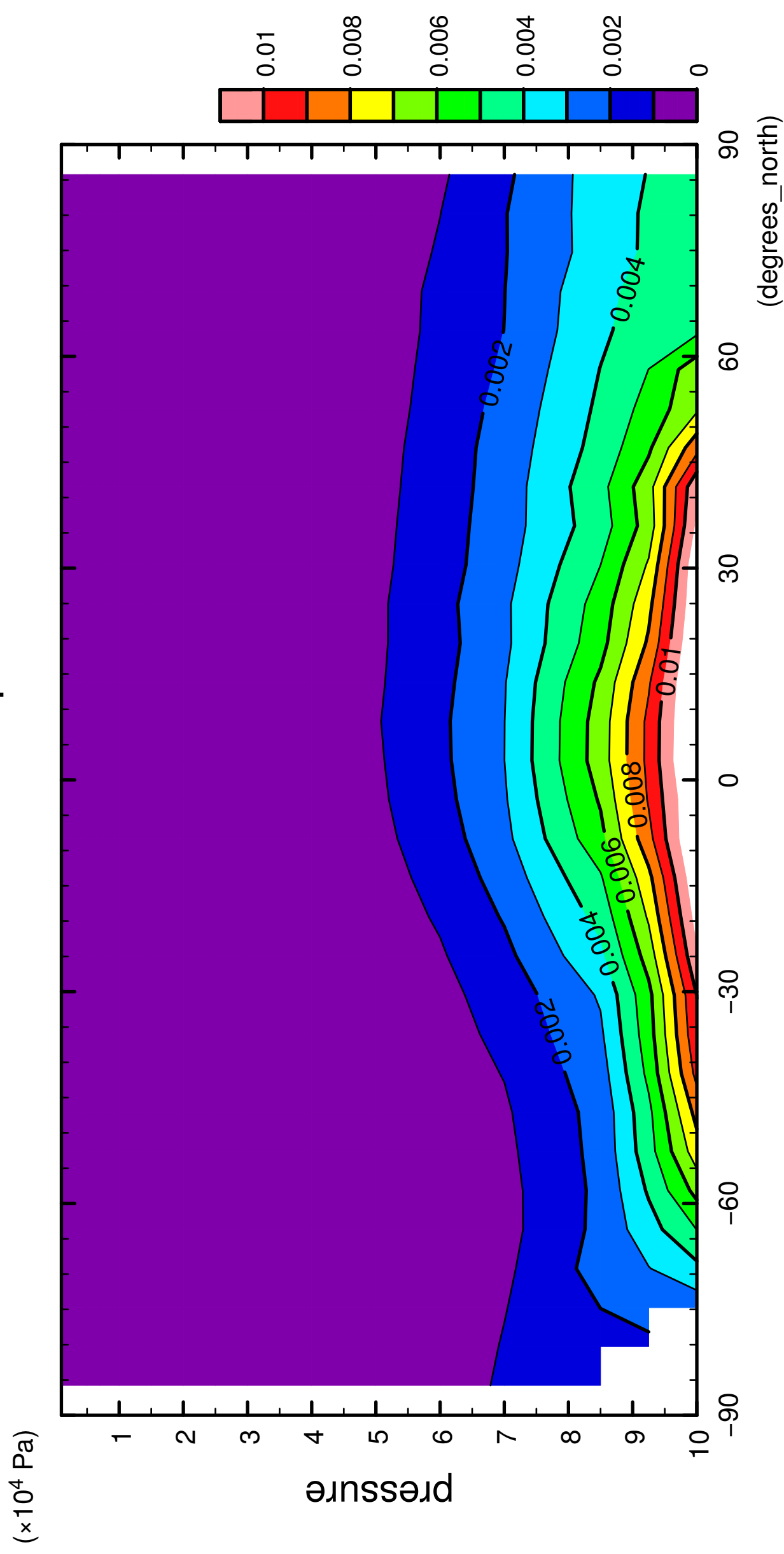


latitude

CONTOUR INTERVAL = 1.000E-03

3/12

QH2OVap

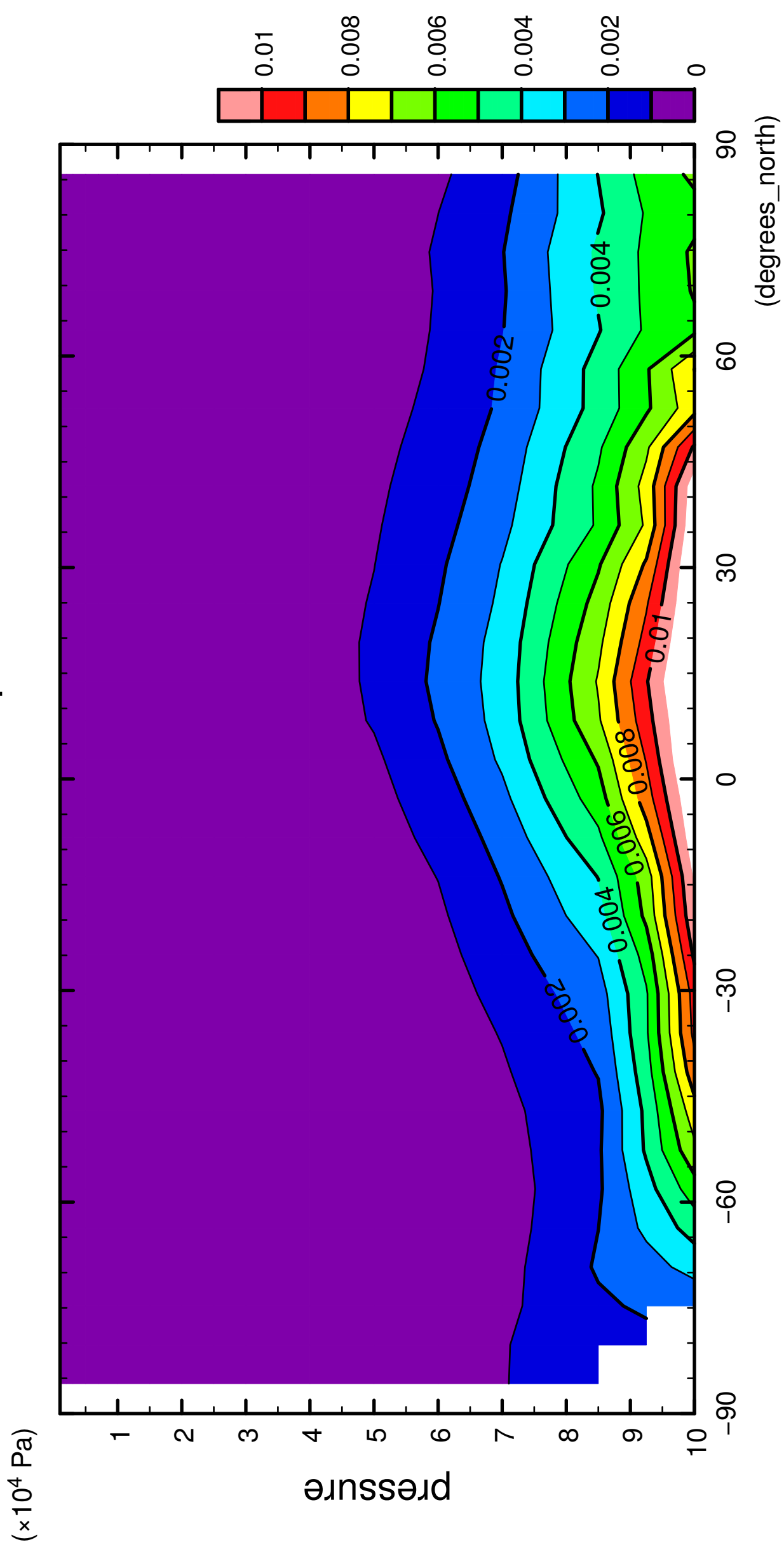


latitude

CONTOUR INTERVAL = 1.000E-03

4/12

QH2OVap

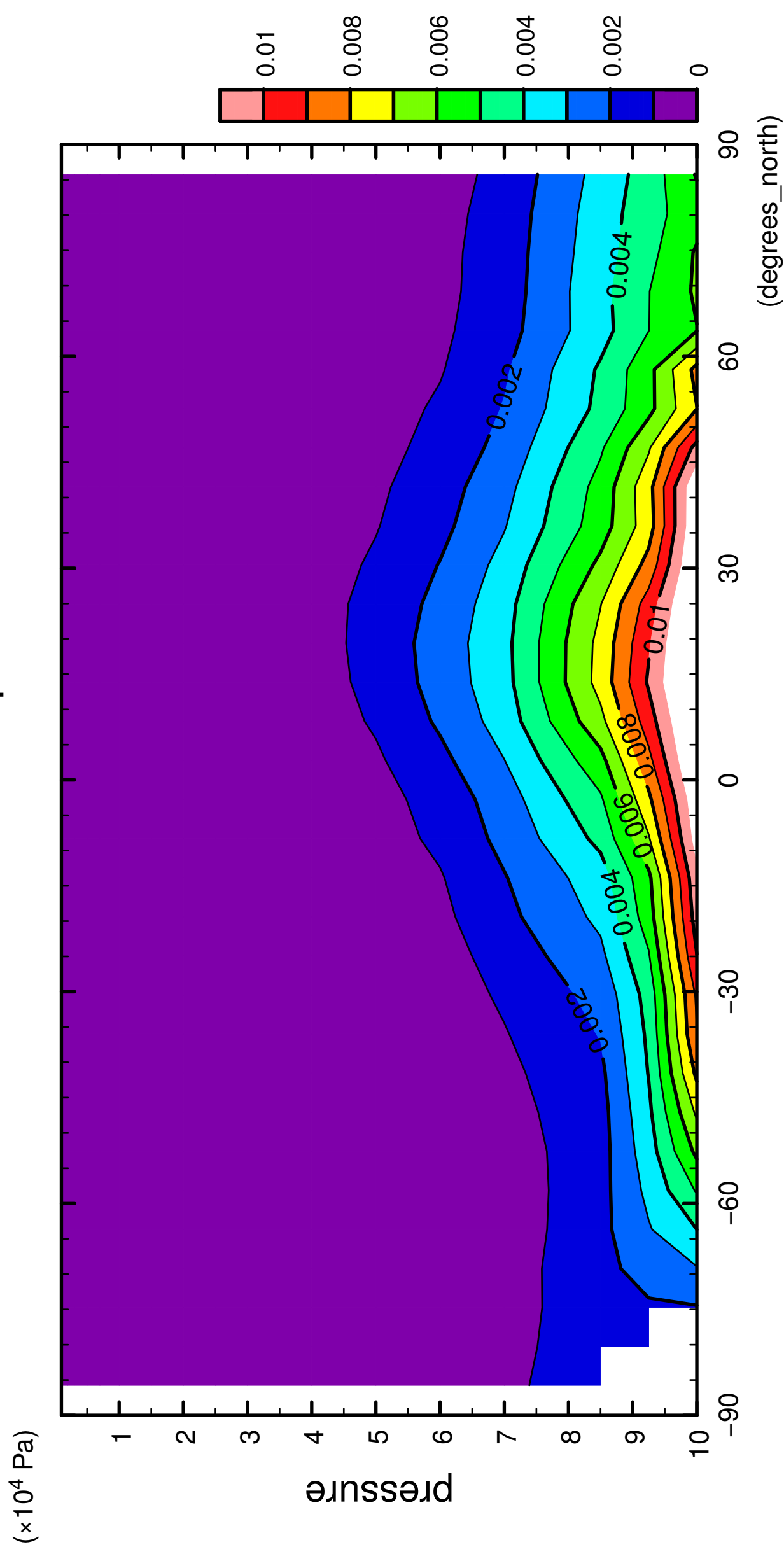


latitude

CONTOUR INTERVAL = 1.000E-03

5/12

QH2OVap

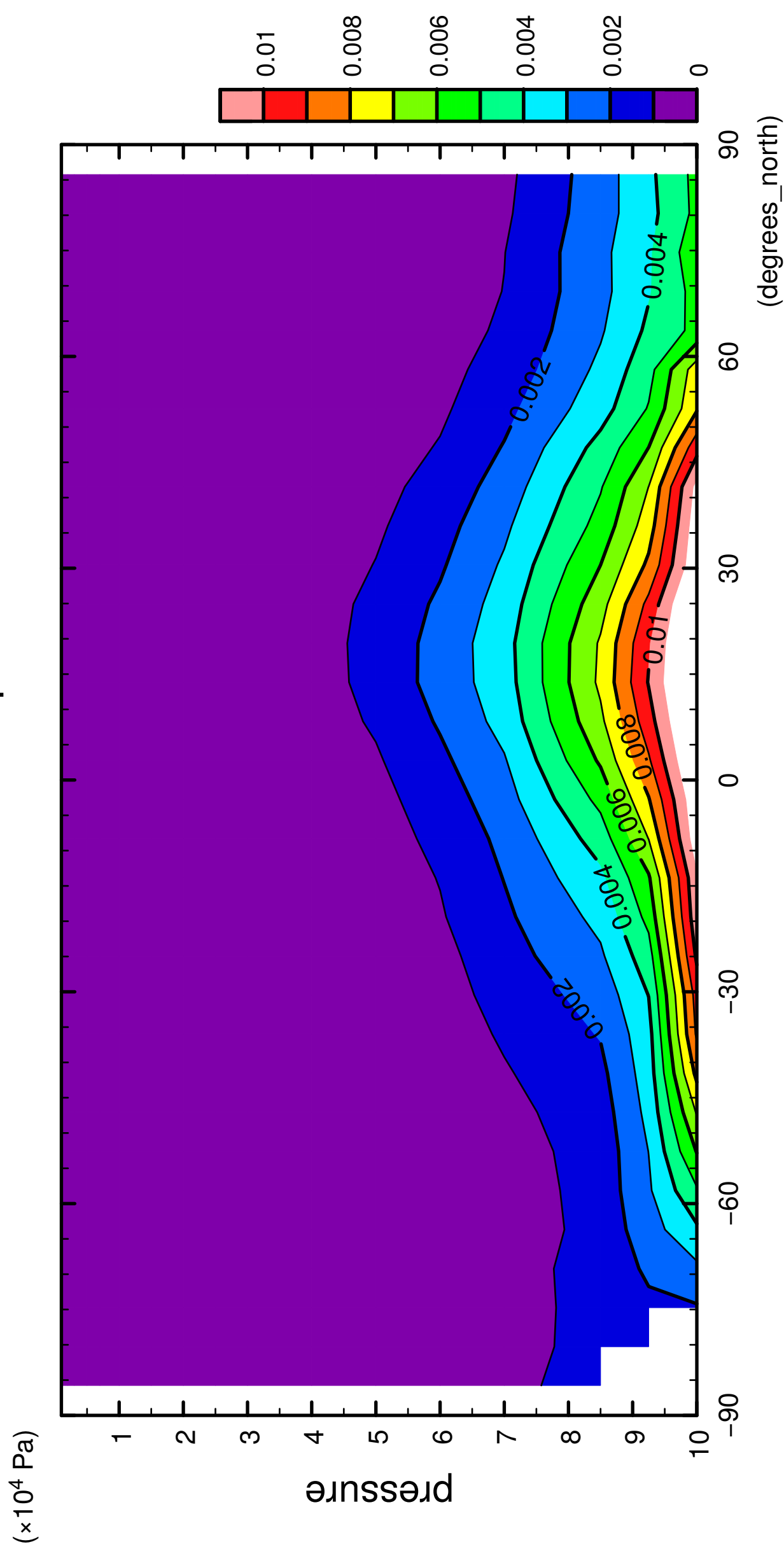


latitude

CONTOUR INTERVAL = 1.000E-03

6/12

QH2OVap

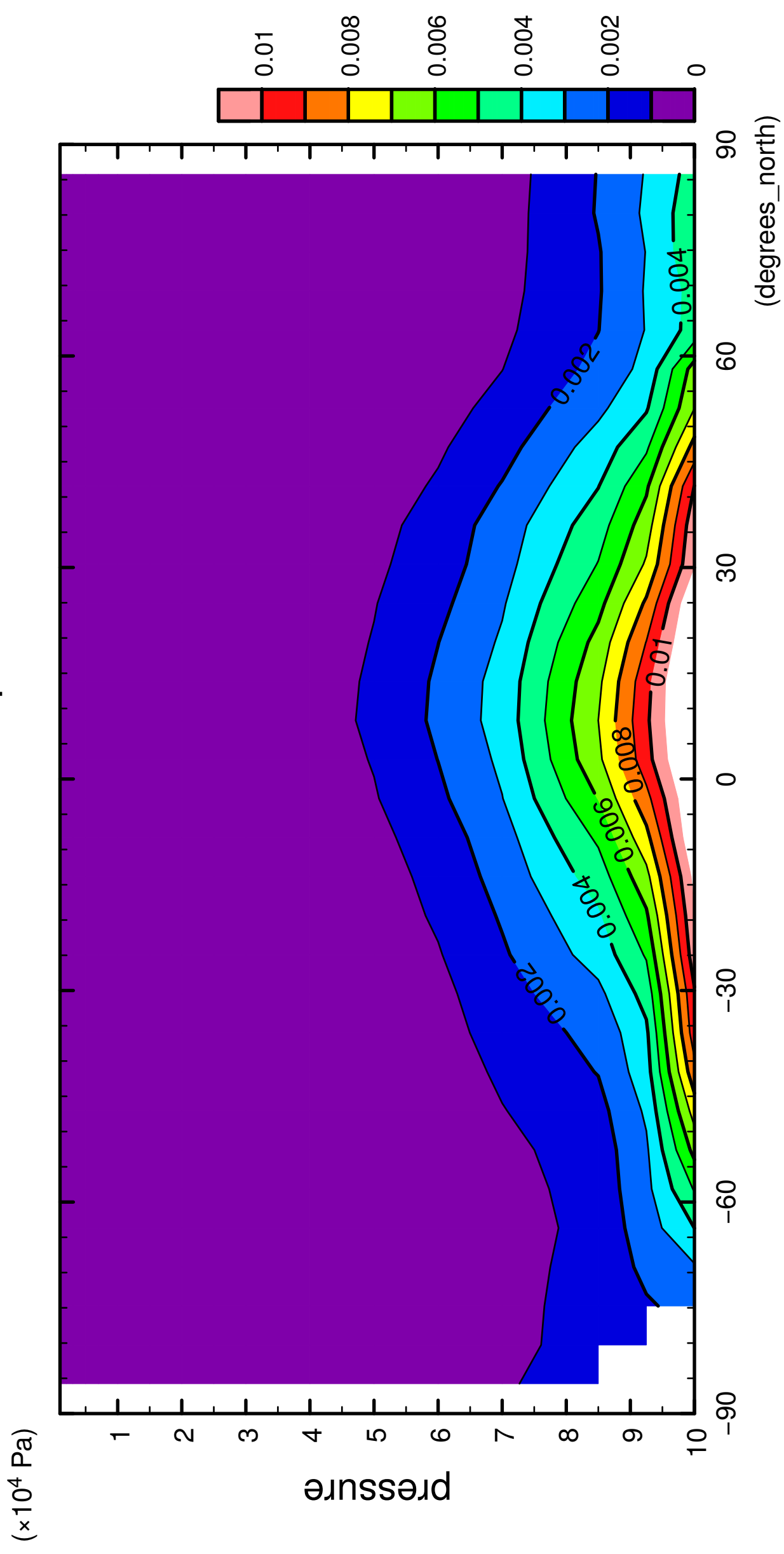


latitude

CONTOUR INTERVAL = 1.000E-03

7/12

QH2OVap

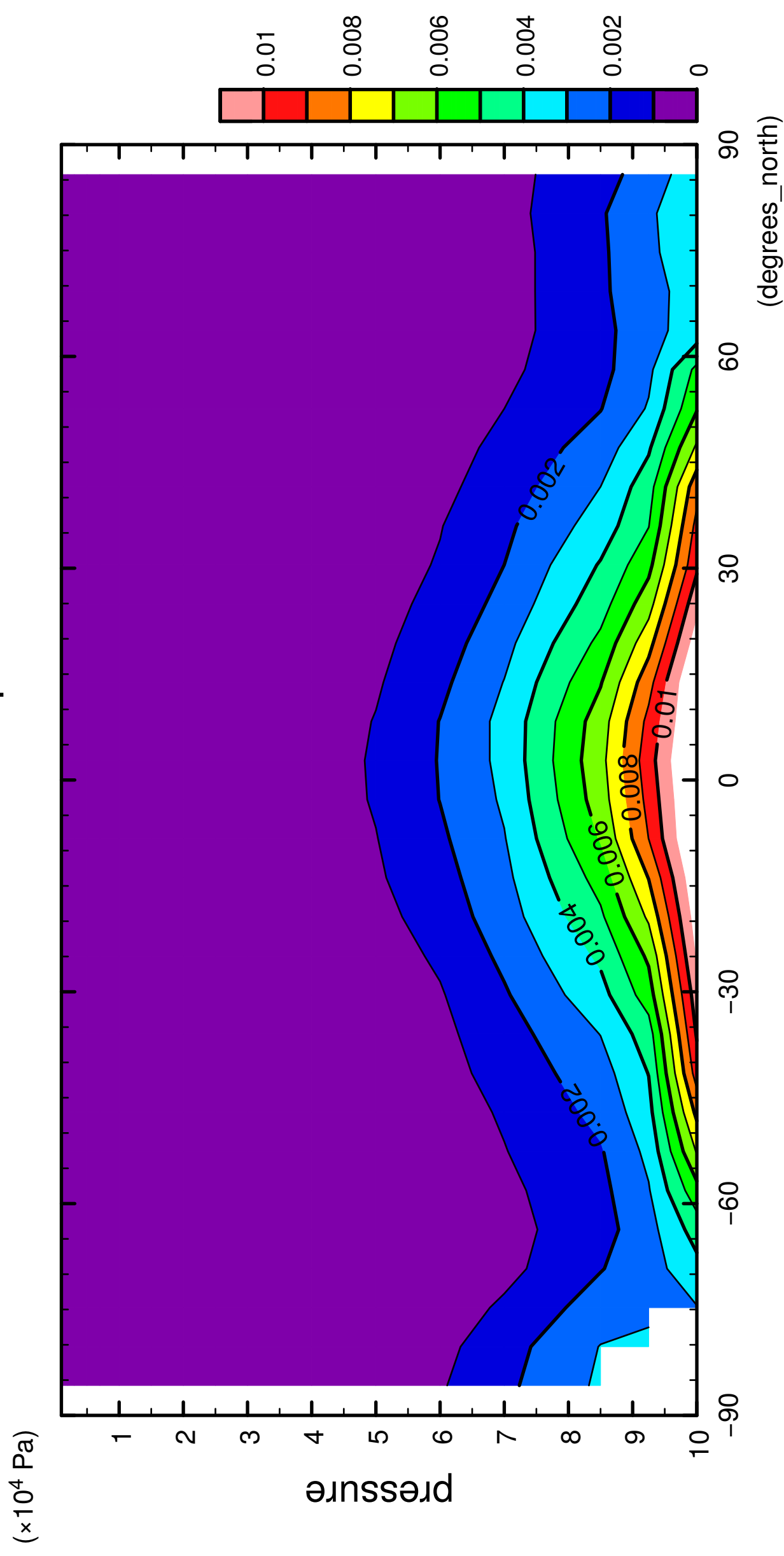


latitude

CONTOUR INTERVAL = 1.000E-03

8/12

QH2OVap

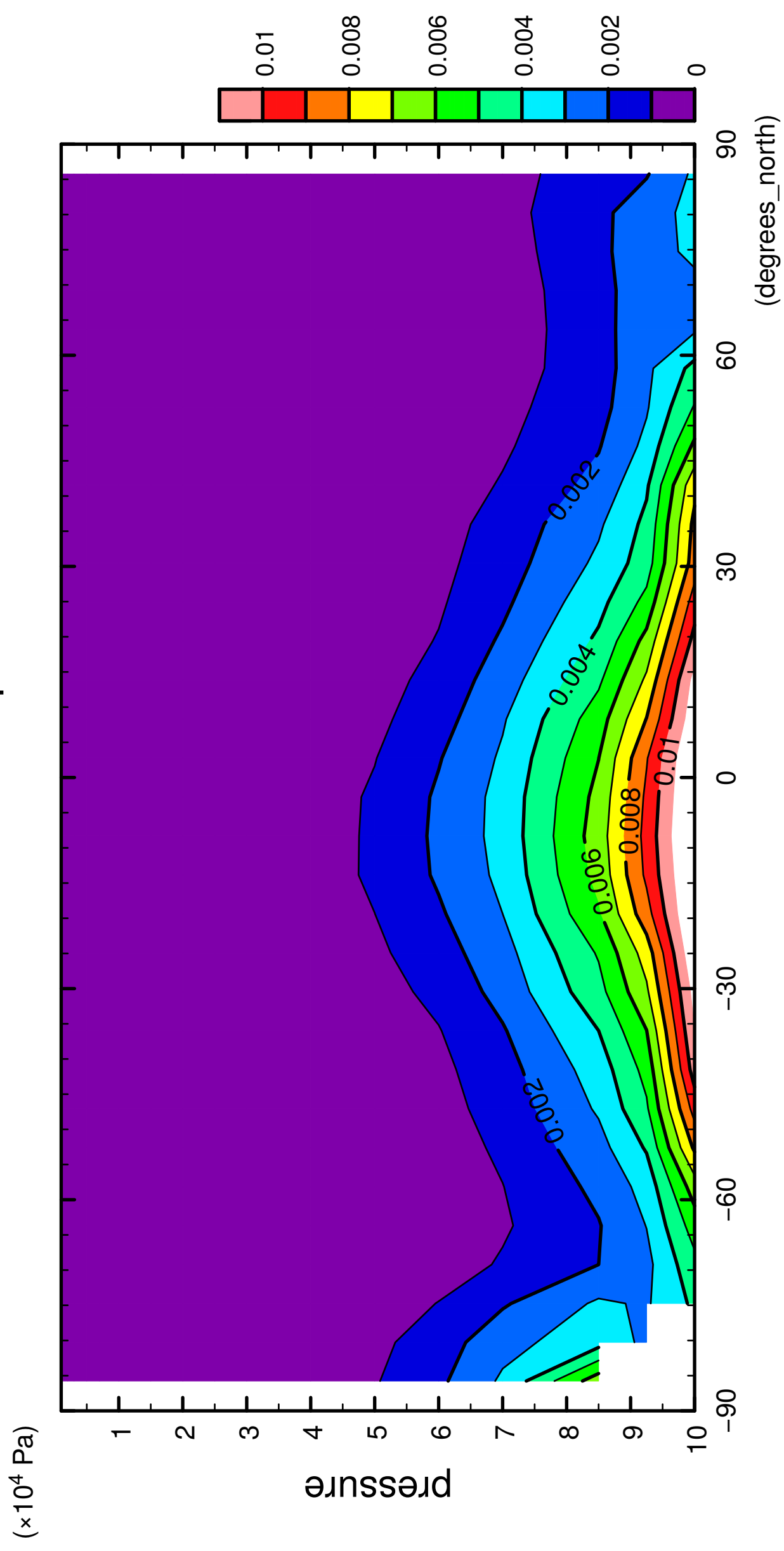


latitude

CONTOUR INTERVAL = 1.000E-03

9/12

QH2OVap

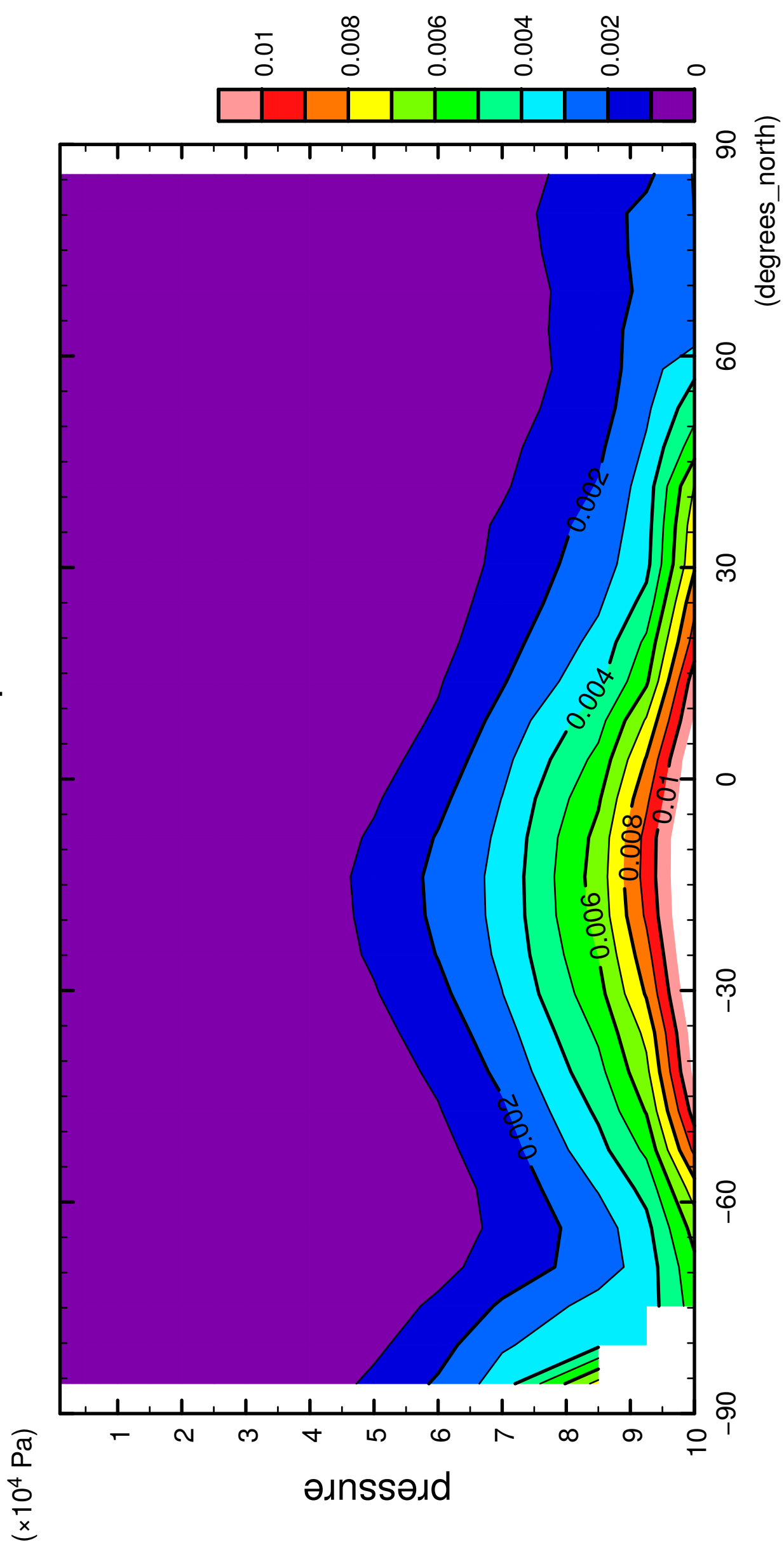


latitude

CONTOUR INTERVAL = 1.000E-03

10/12

QH2OVap

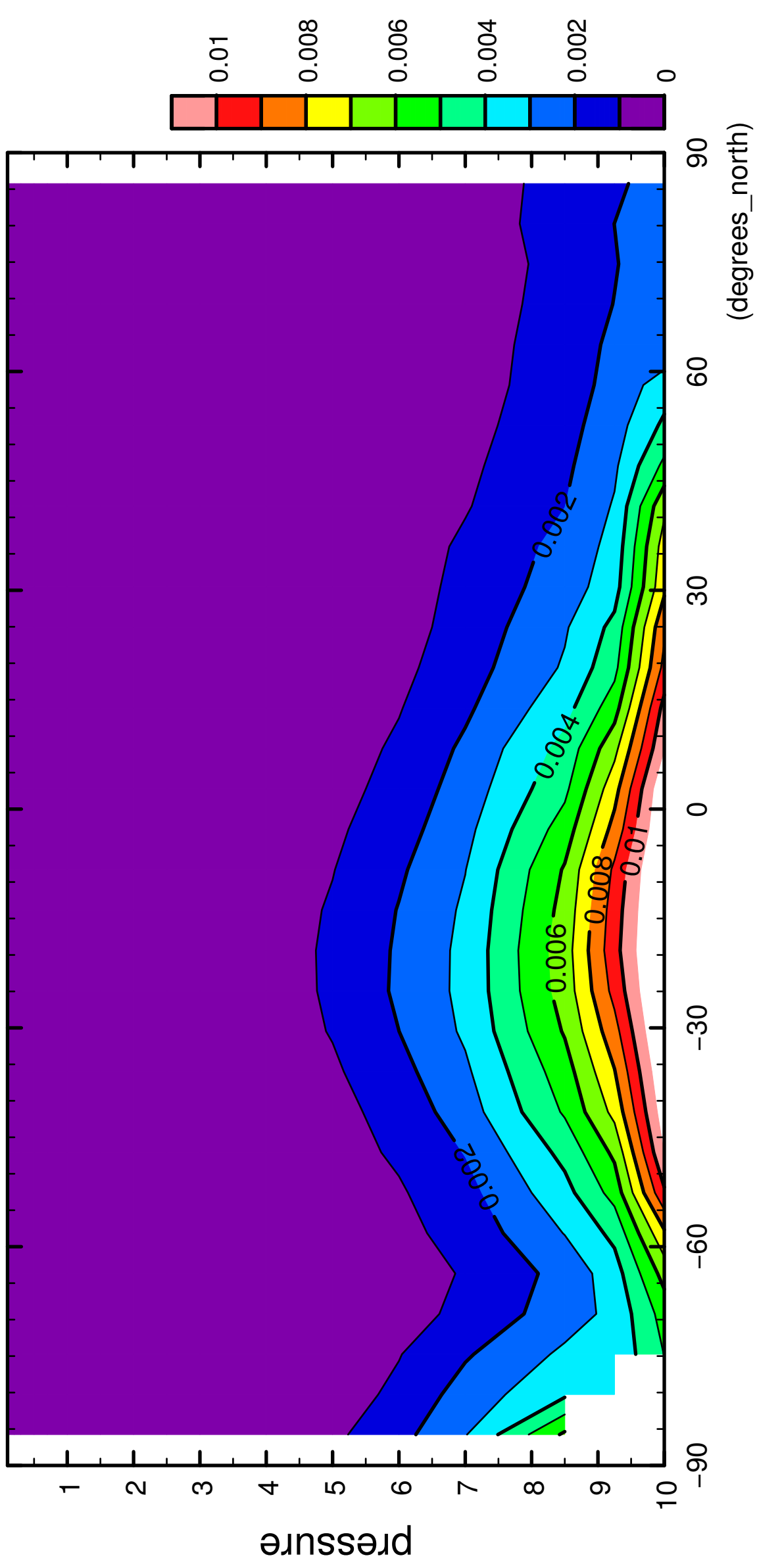


CONTOUR INTERVAL = 1.000E-03

11/12

QH2OVap

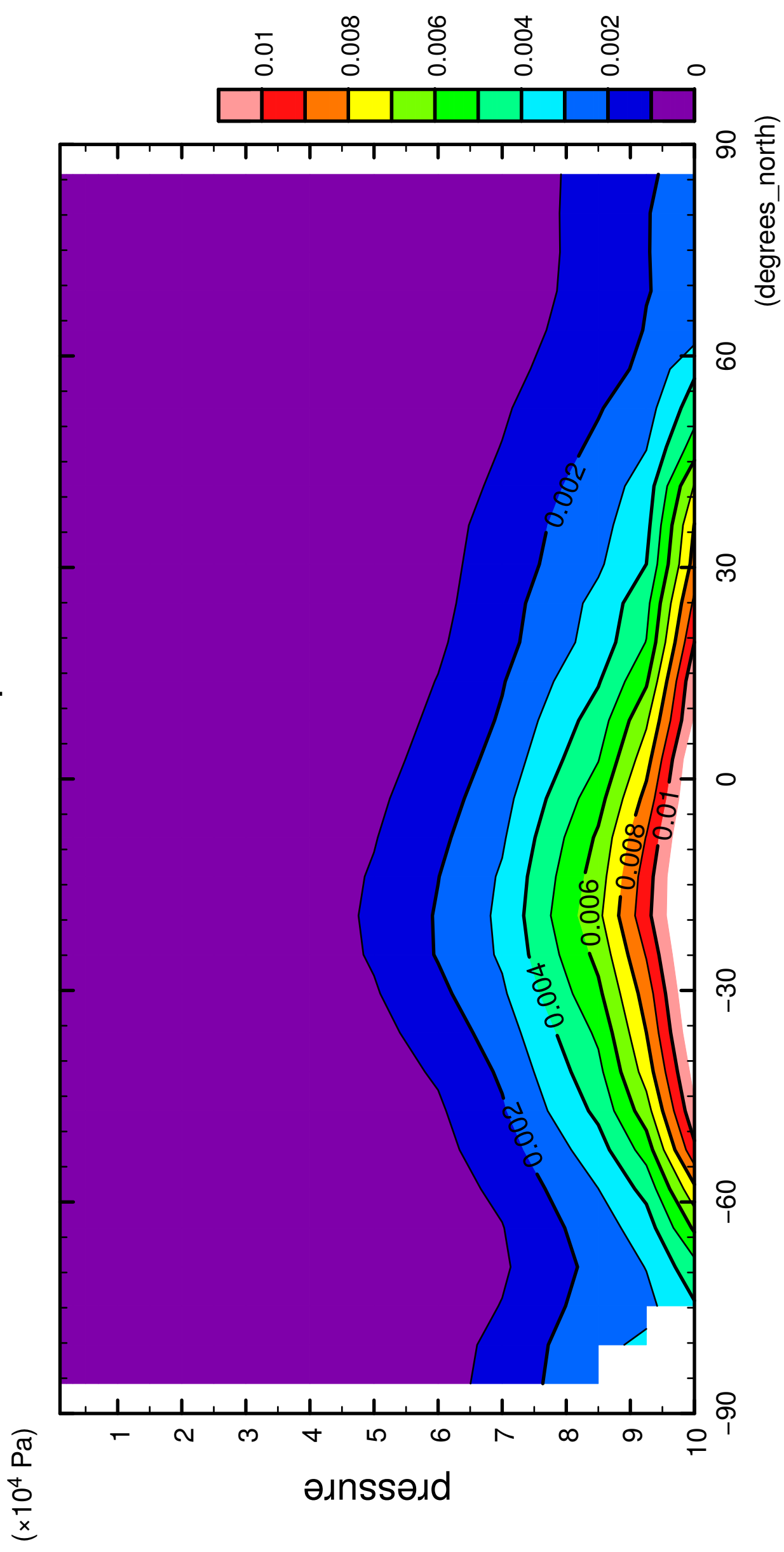
($\times 10^4$ Pa)



CONTOUR INTERVAL = 1.000E-03

12/12

QH2OVap



latitude

CONTOUR INTERVAL = 1.000E-03