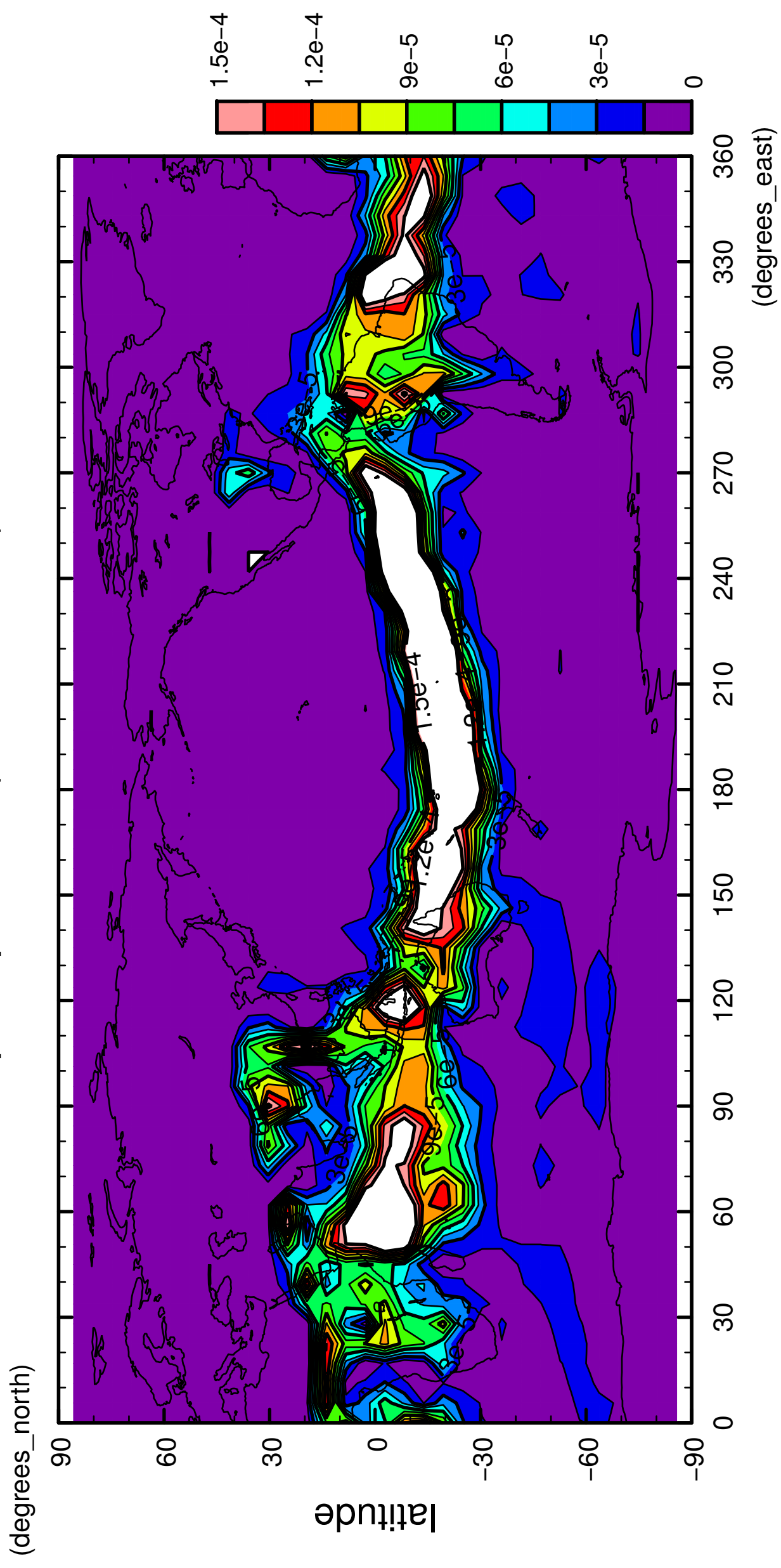


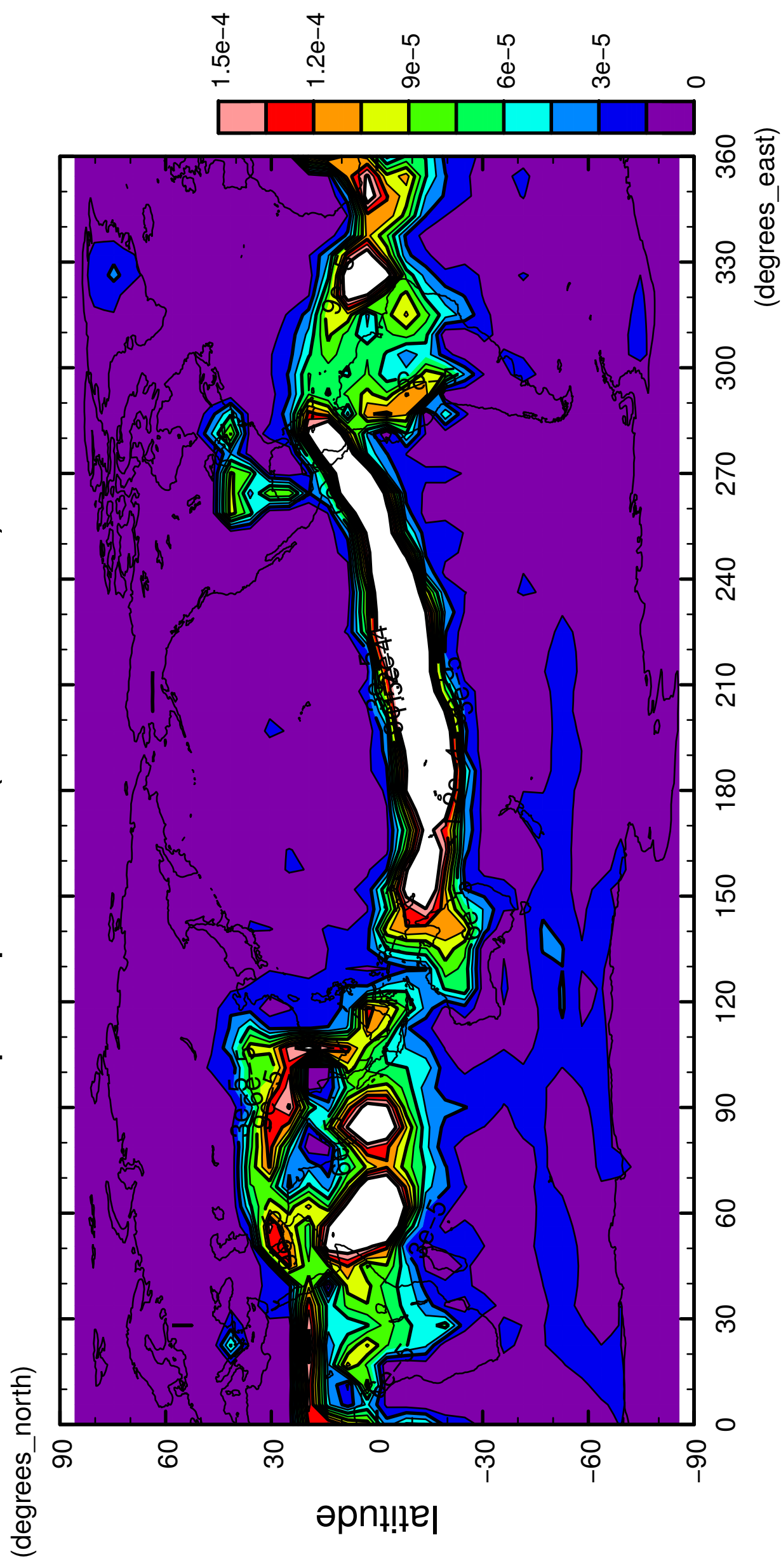
1/12

precipitation (rain + snow)



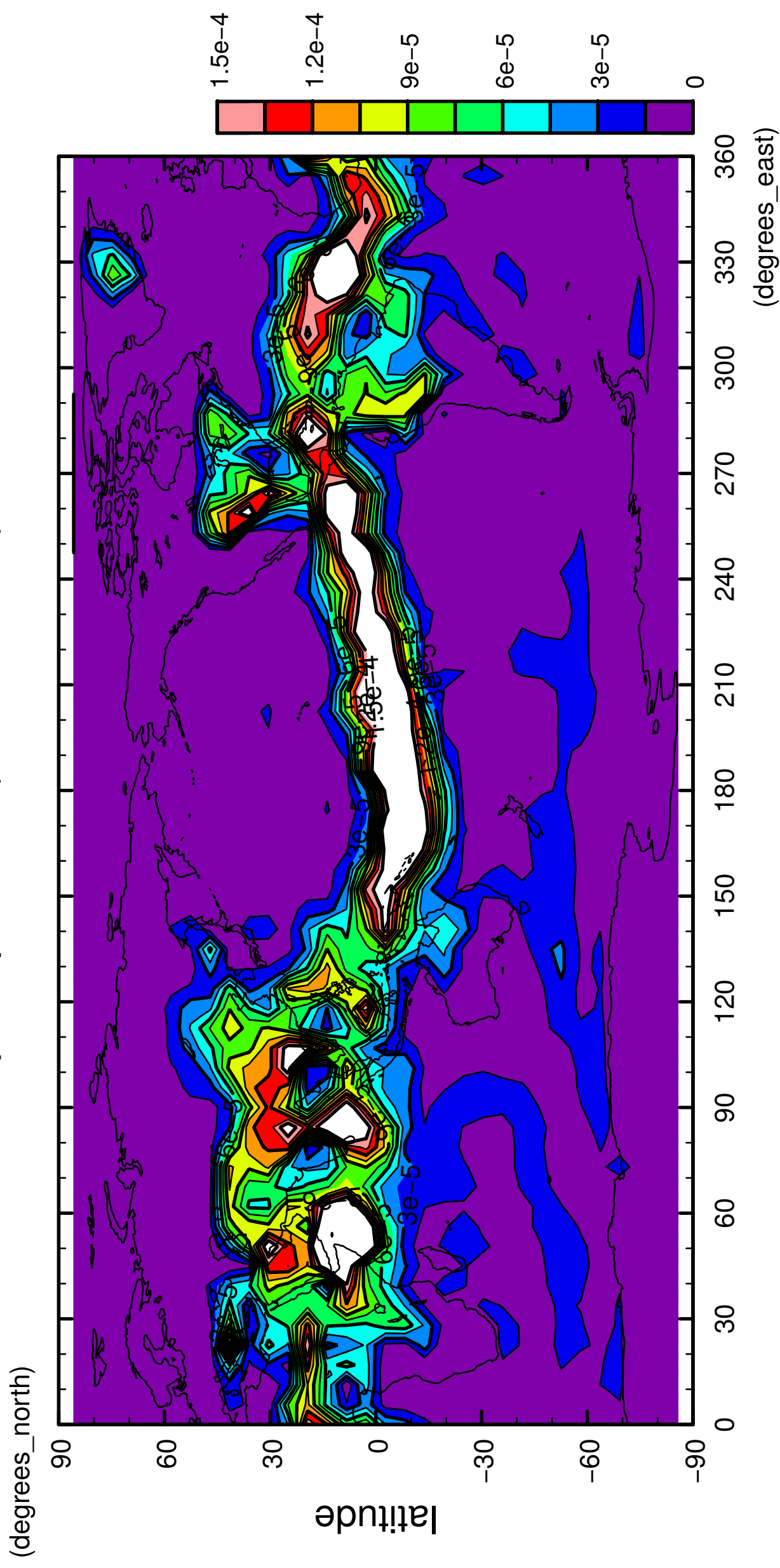
2/12

precipitation (rain + snow)



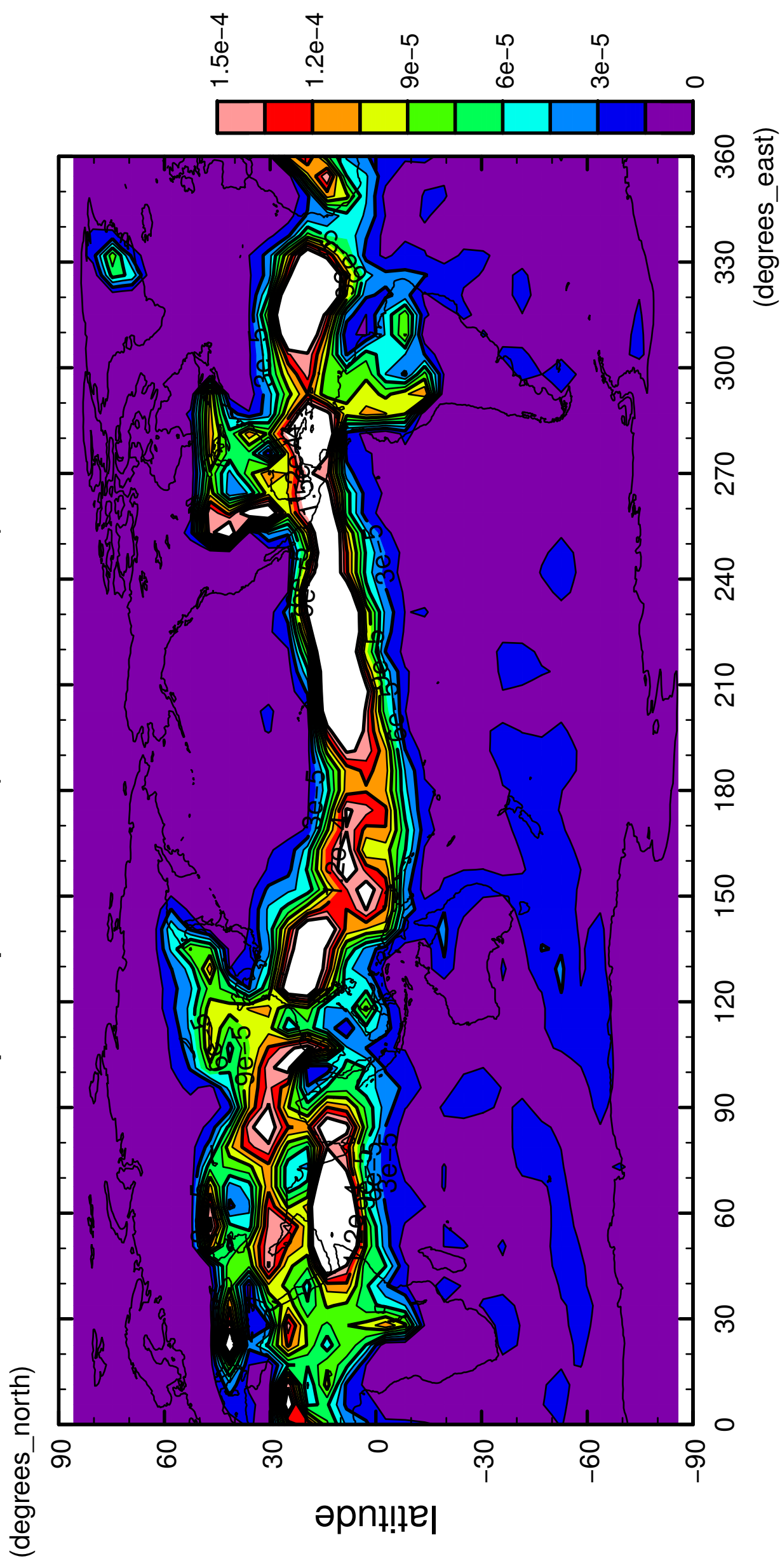
3/12

precipitation (rain + snow)



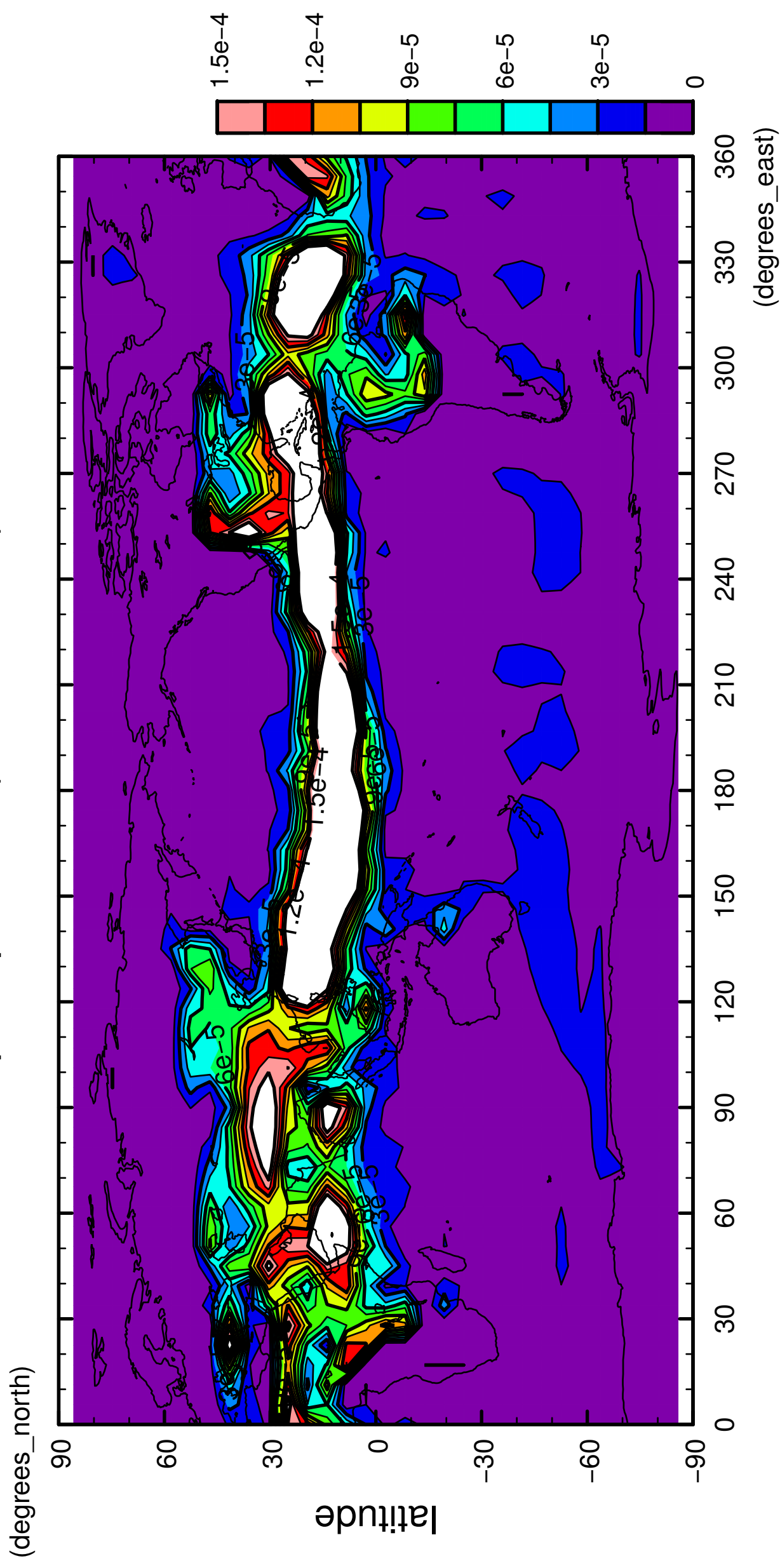
4/12

precipitation (rain + snow)



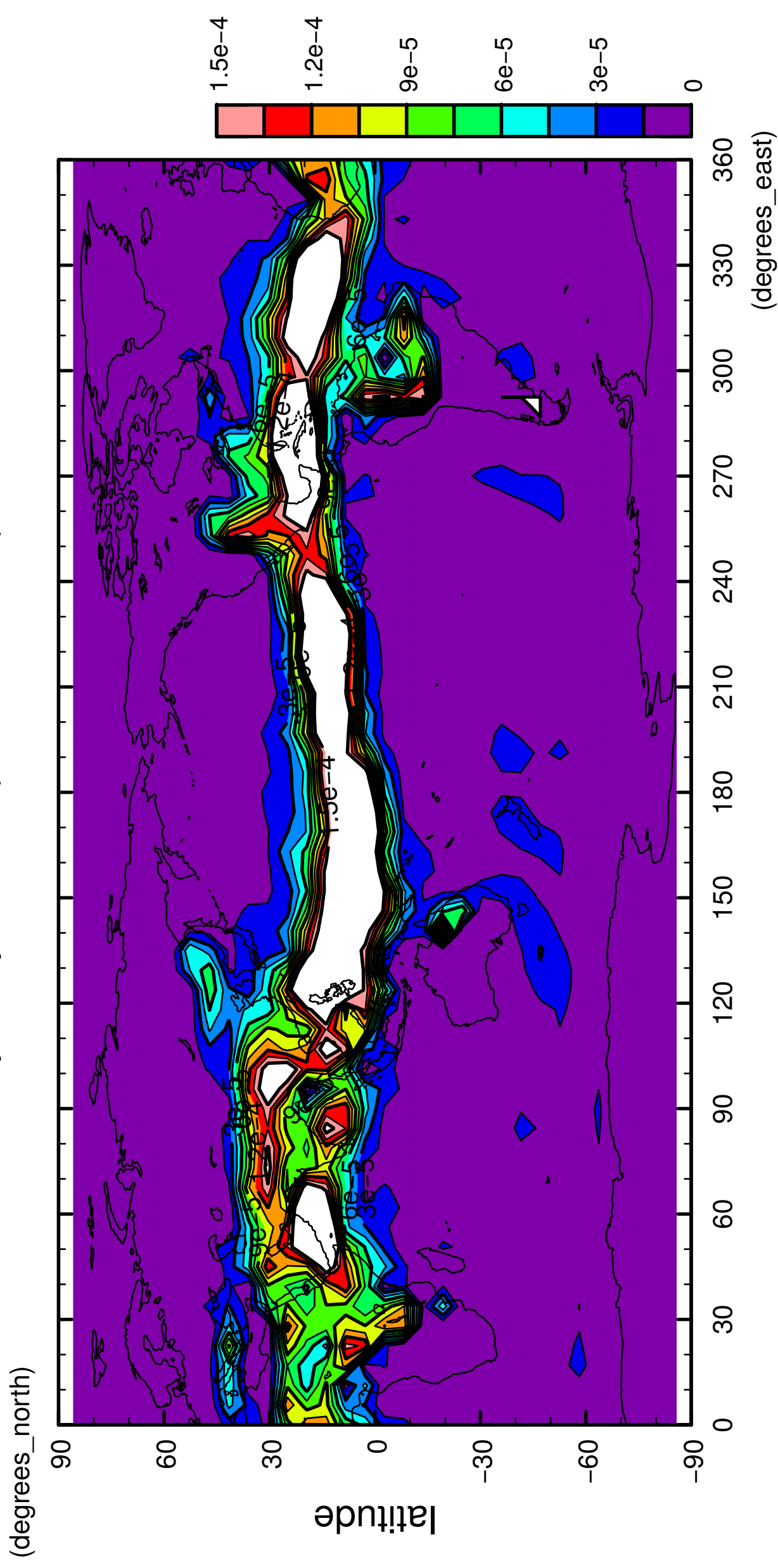
5/12

precipitation (rain + snow)



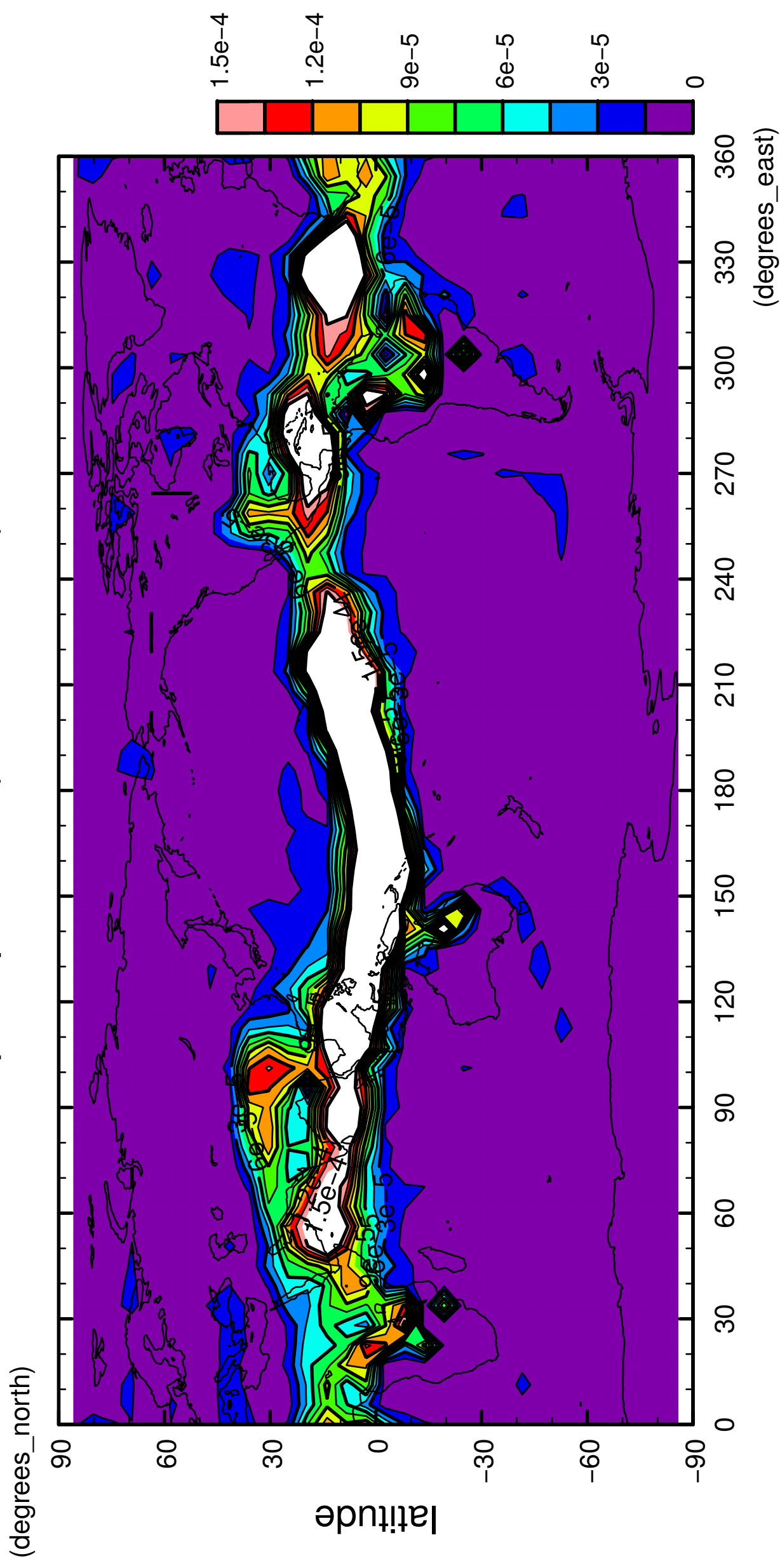
6/12

precipitation (rain + snow)



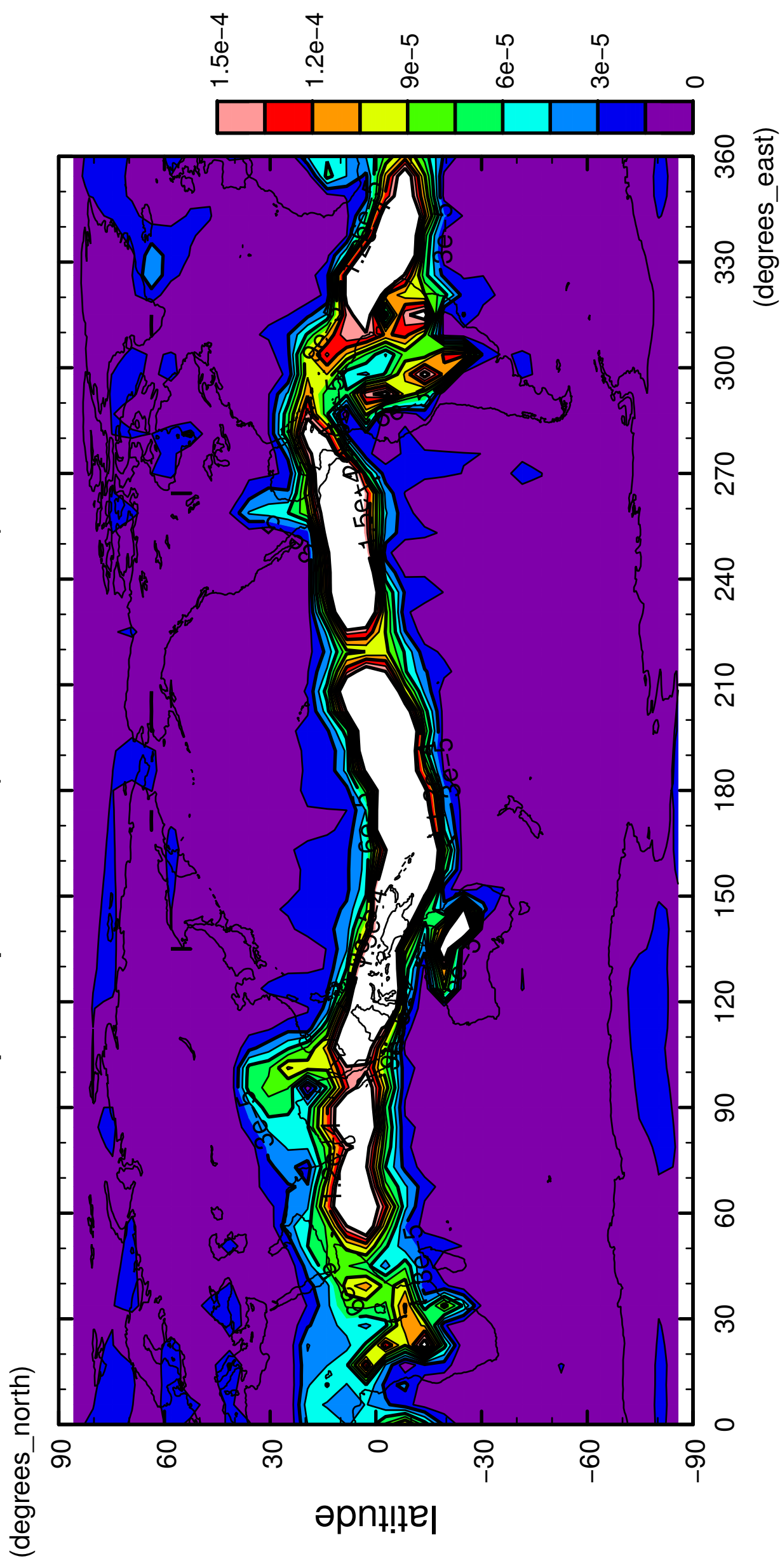
7/12

precipitation (rain + snow)



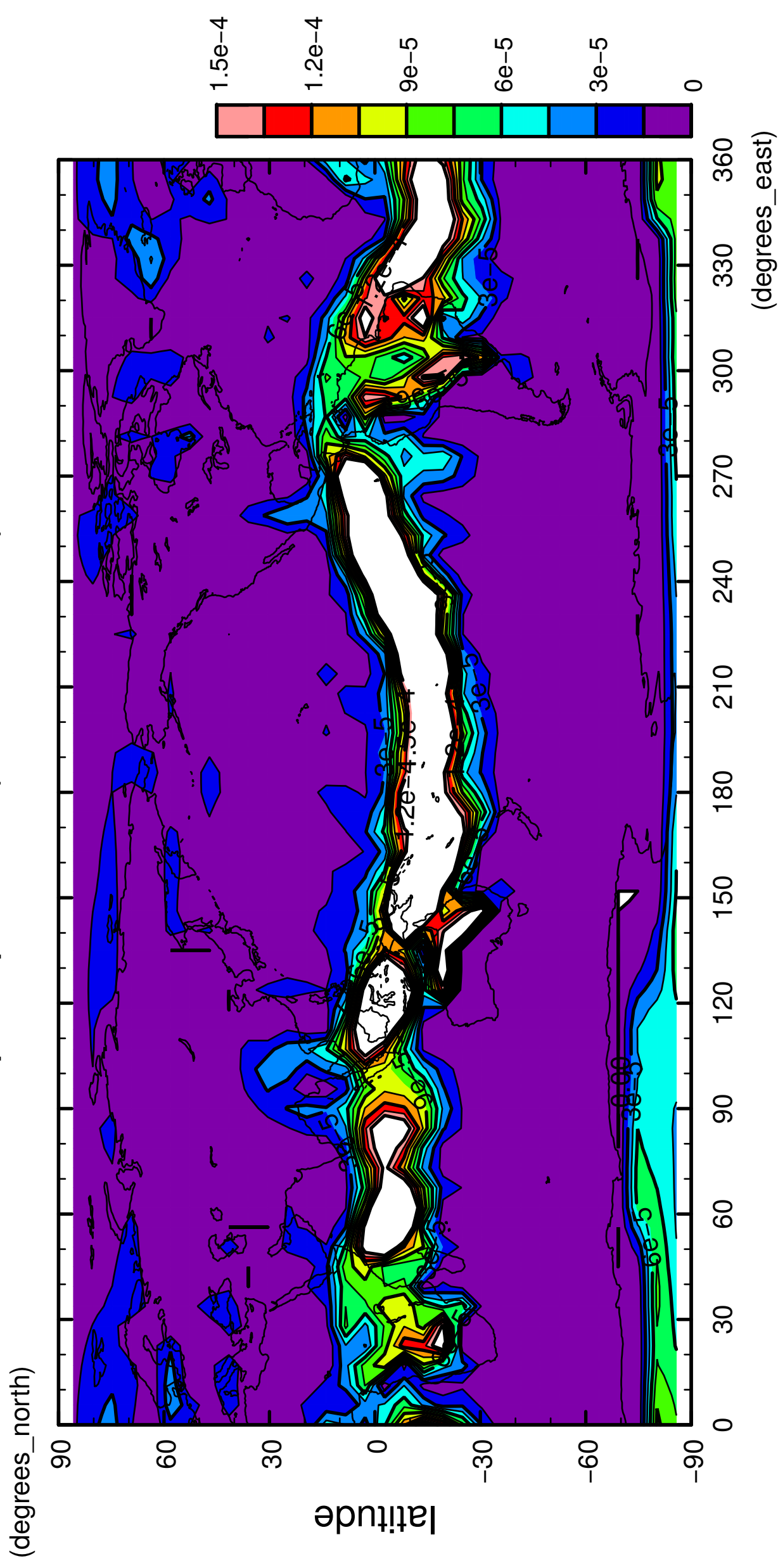
8/12

precipitation (rain + snow)



9/12

precipitation (rain + snow)

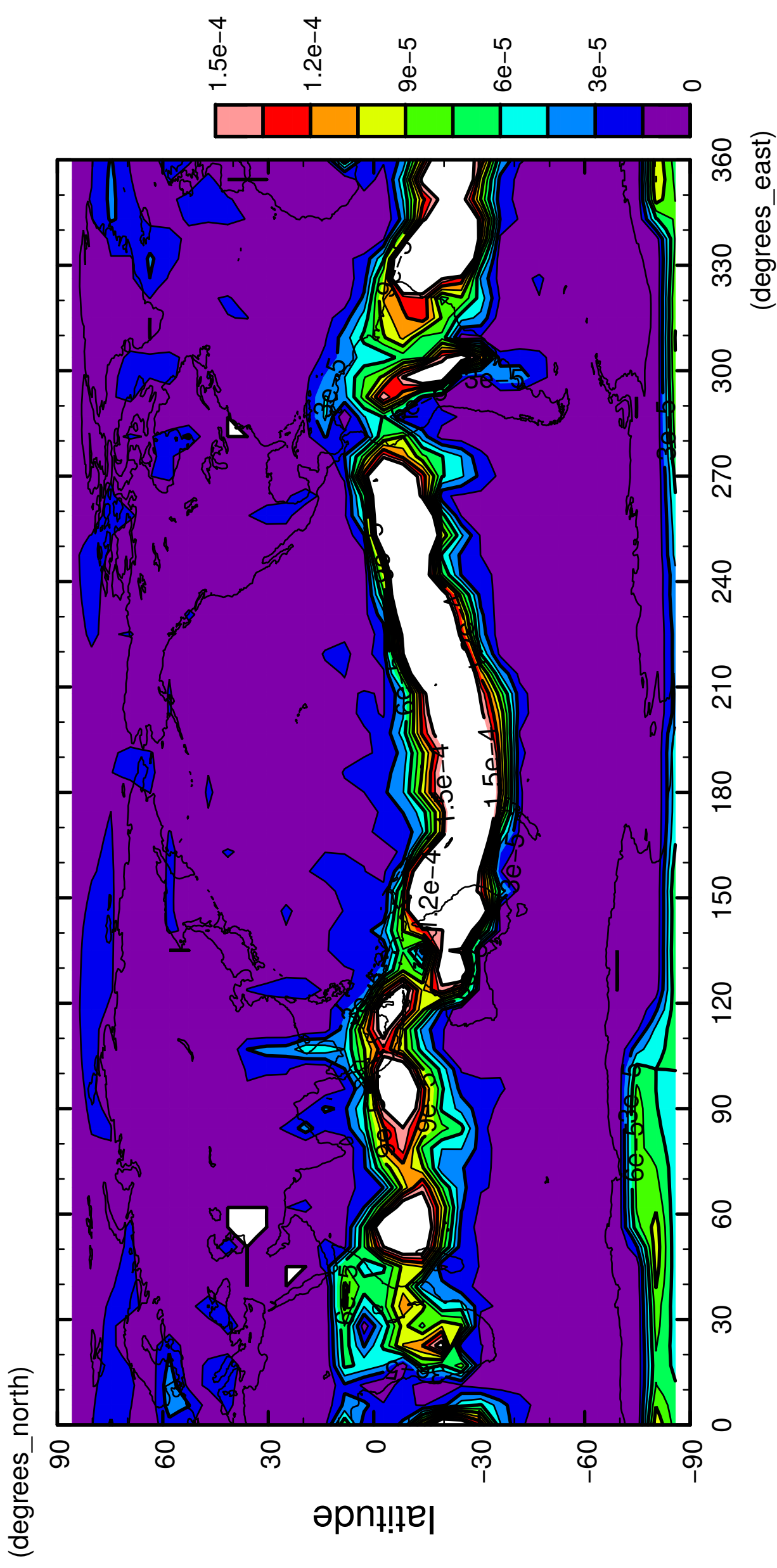


longitude

CONTOUR INTERVAL = 1.500E-05

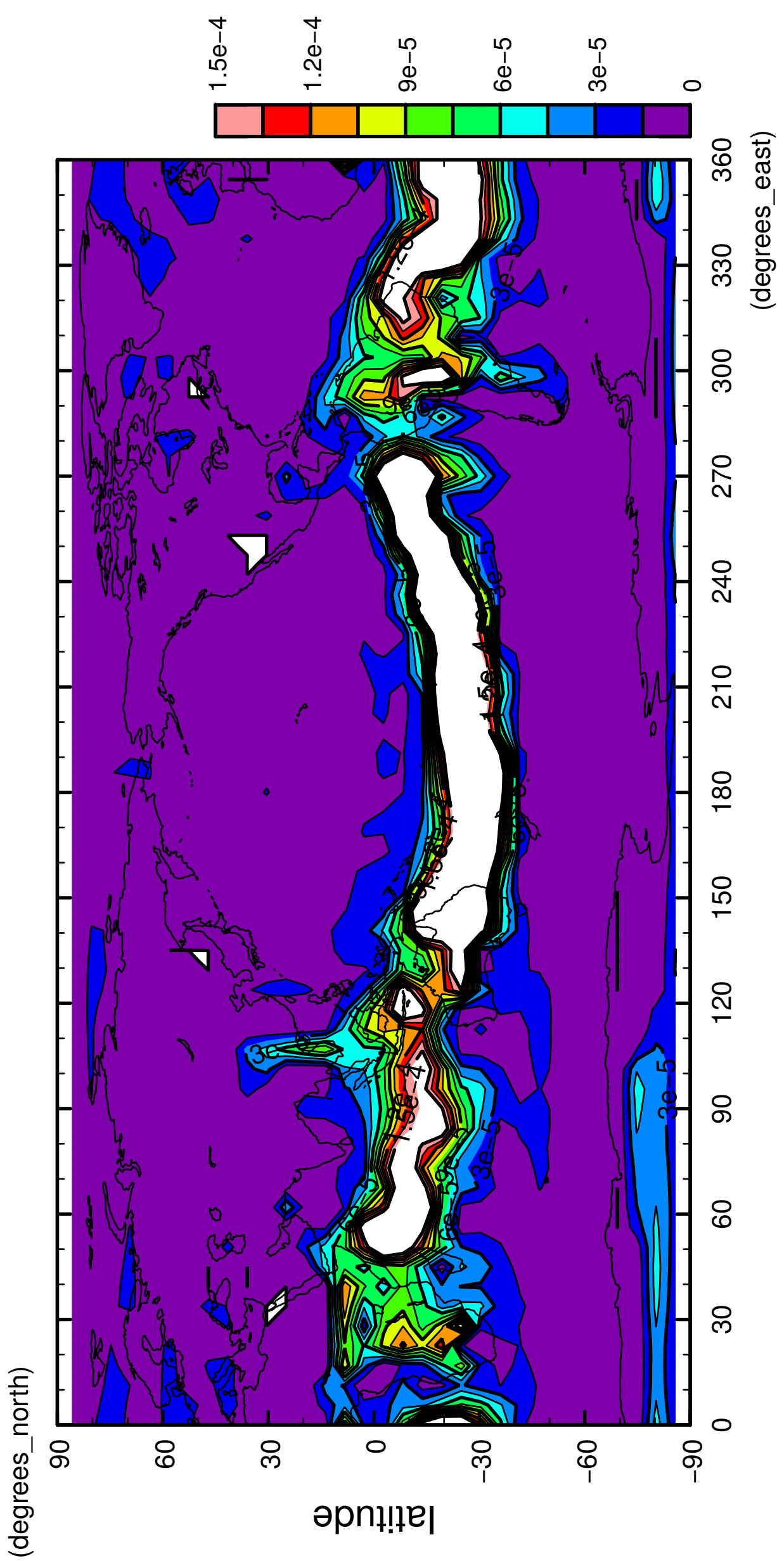
10/12

precipitation (rain + snow)



11/12

precipitation (rain + snow)



longitude
CONTOUR INTERVAL = 1.500E-05

12/12

precipitation (rain + snow)

