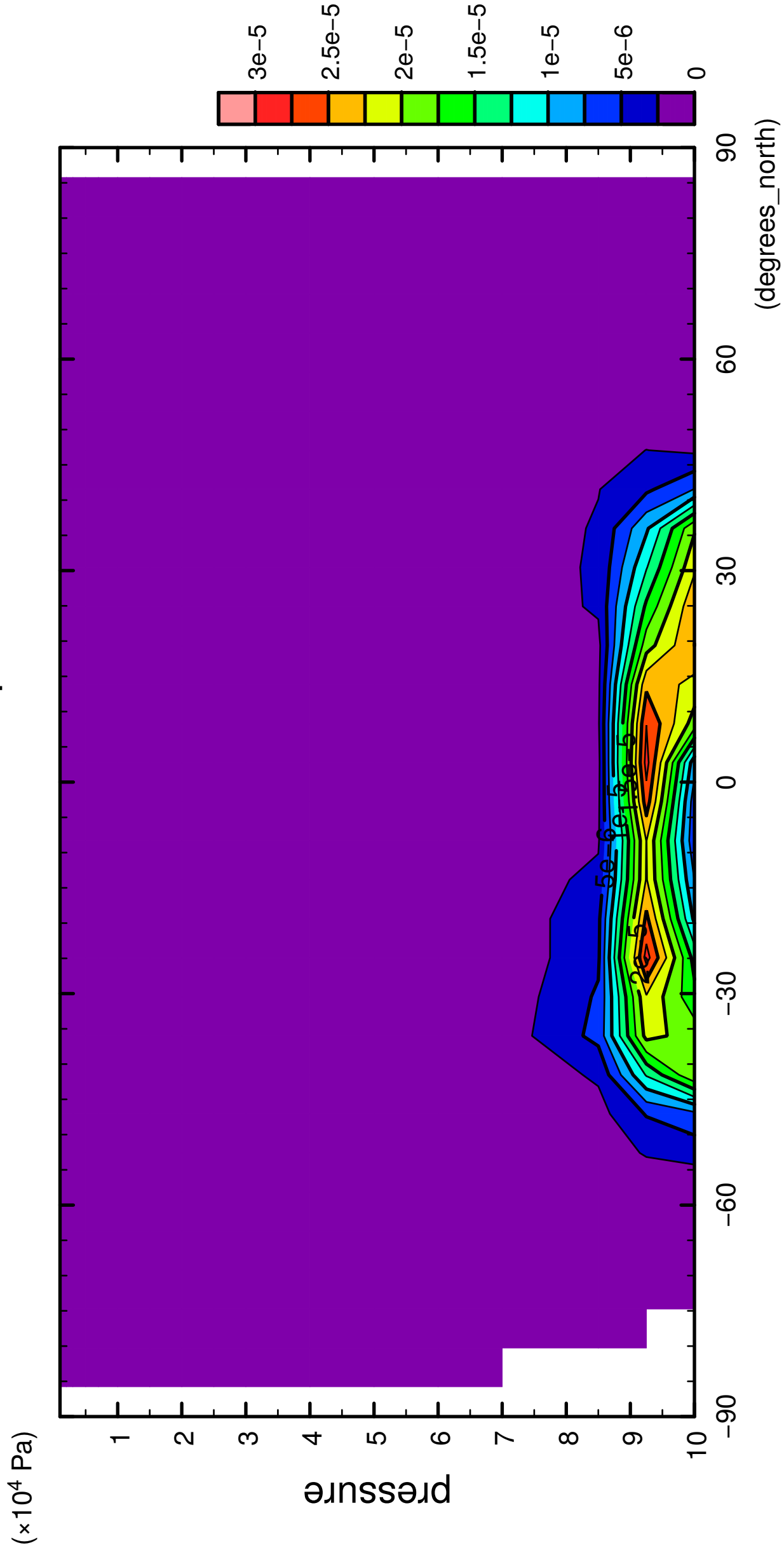


1/12

QH2OLiq

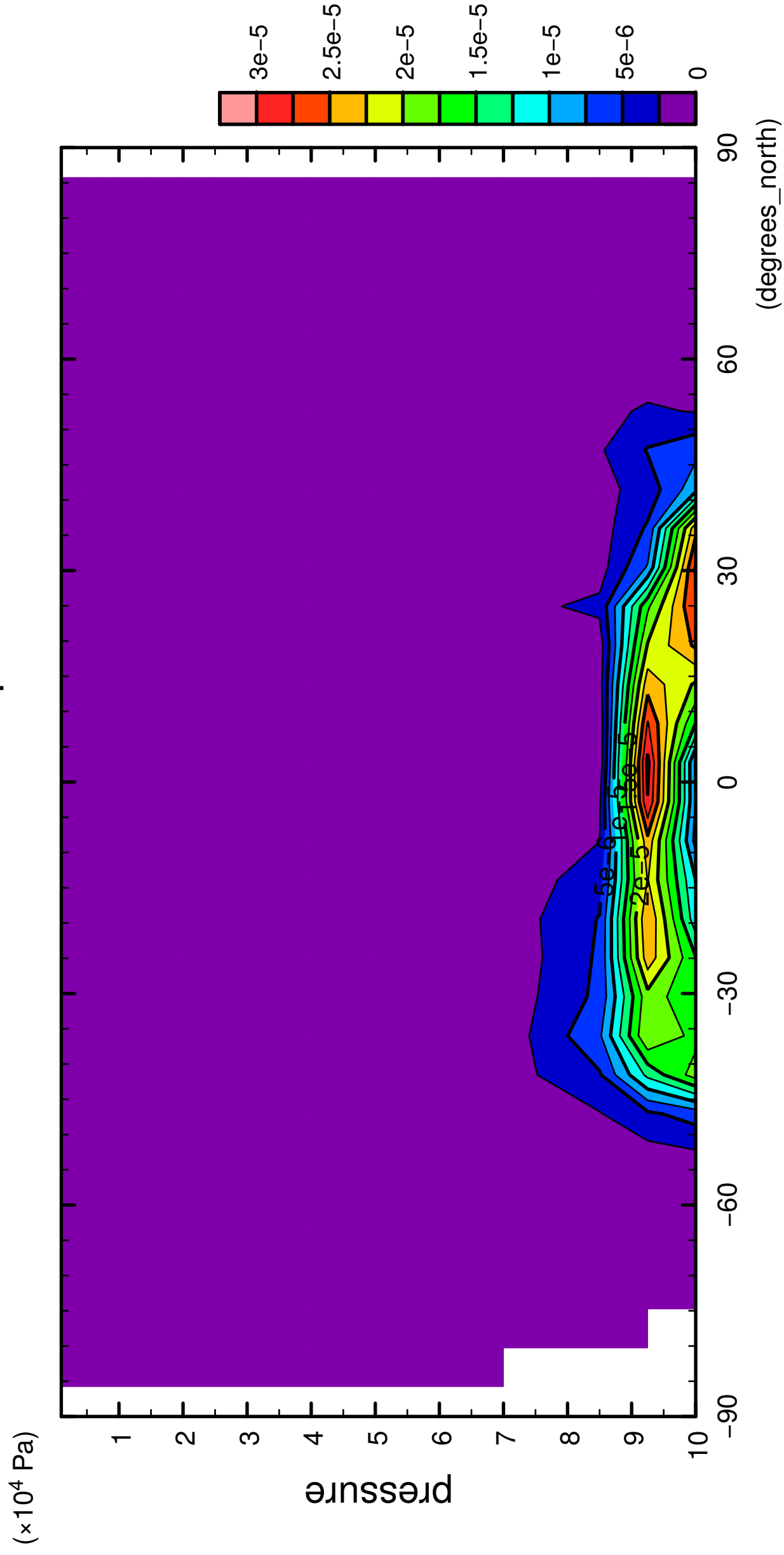


latitude

CONTOUR INTERVAL = 2.500E-06

2/12

QH2OLiq

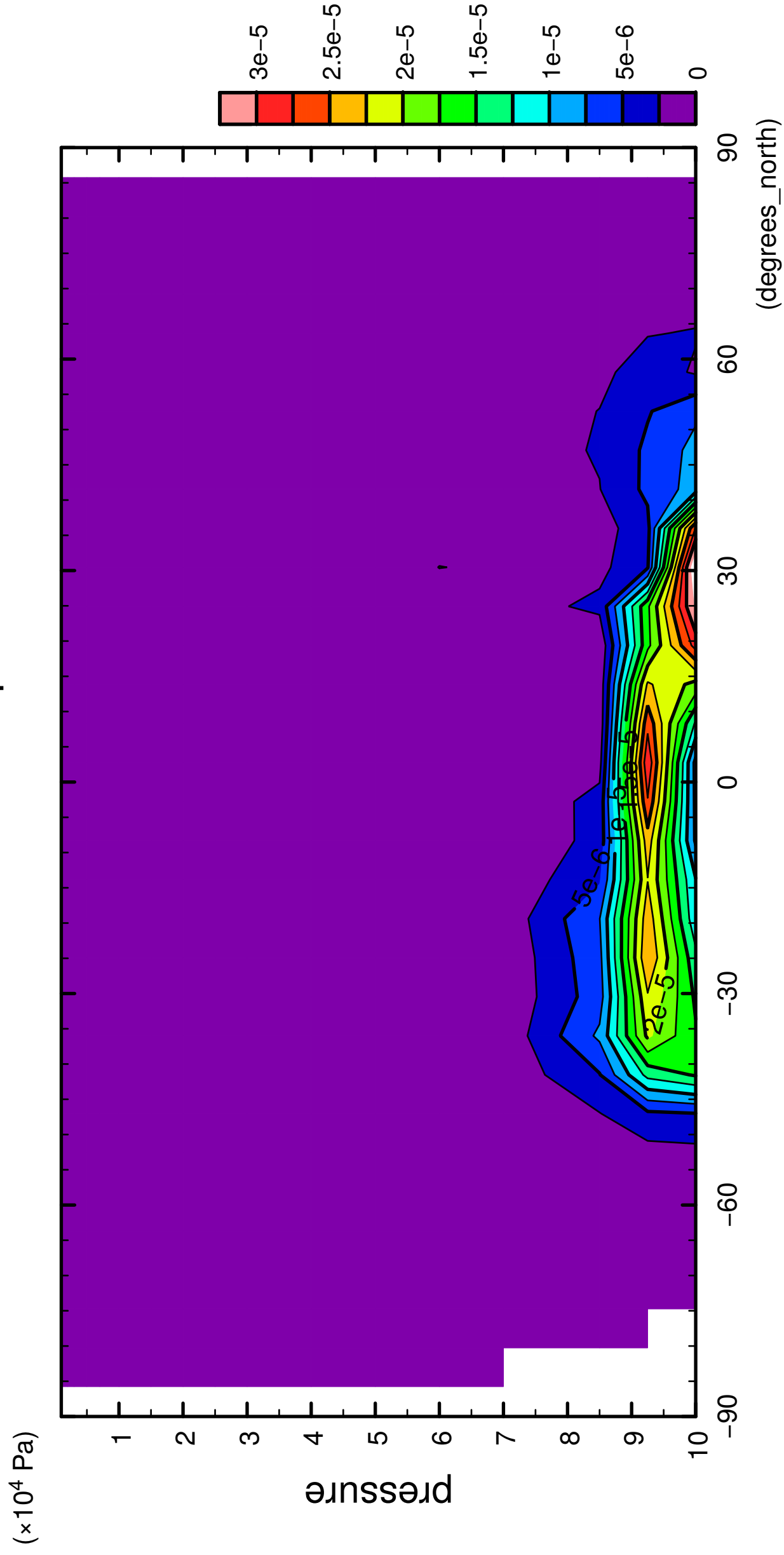


latitude

CONTOUR INTERVAL = 2.500E-06

3/12

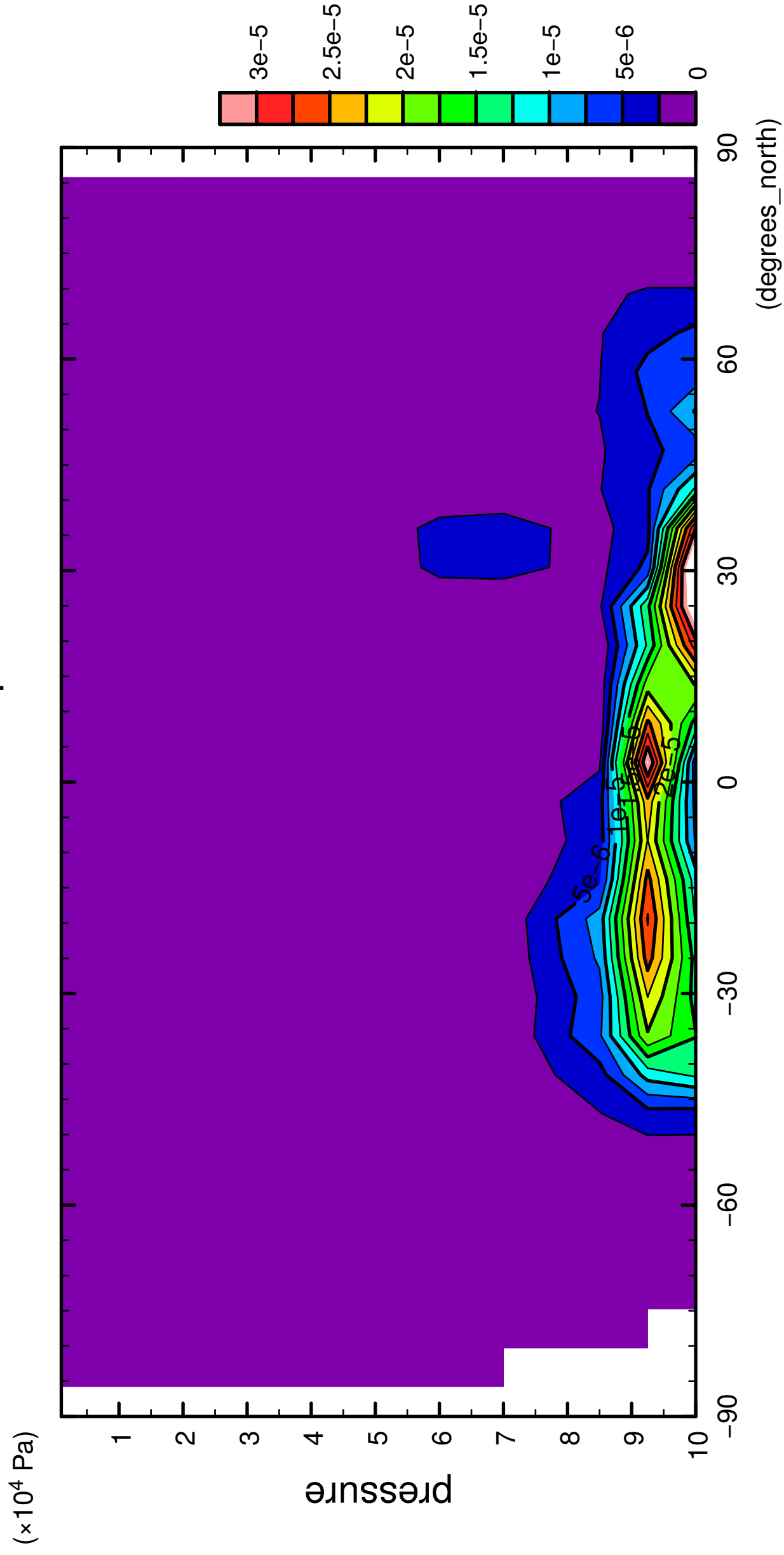
QH2OLiq



CONTOUR INTERVAL = 2.500E-06

4/12

QH2OLiq



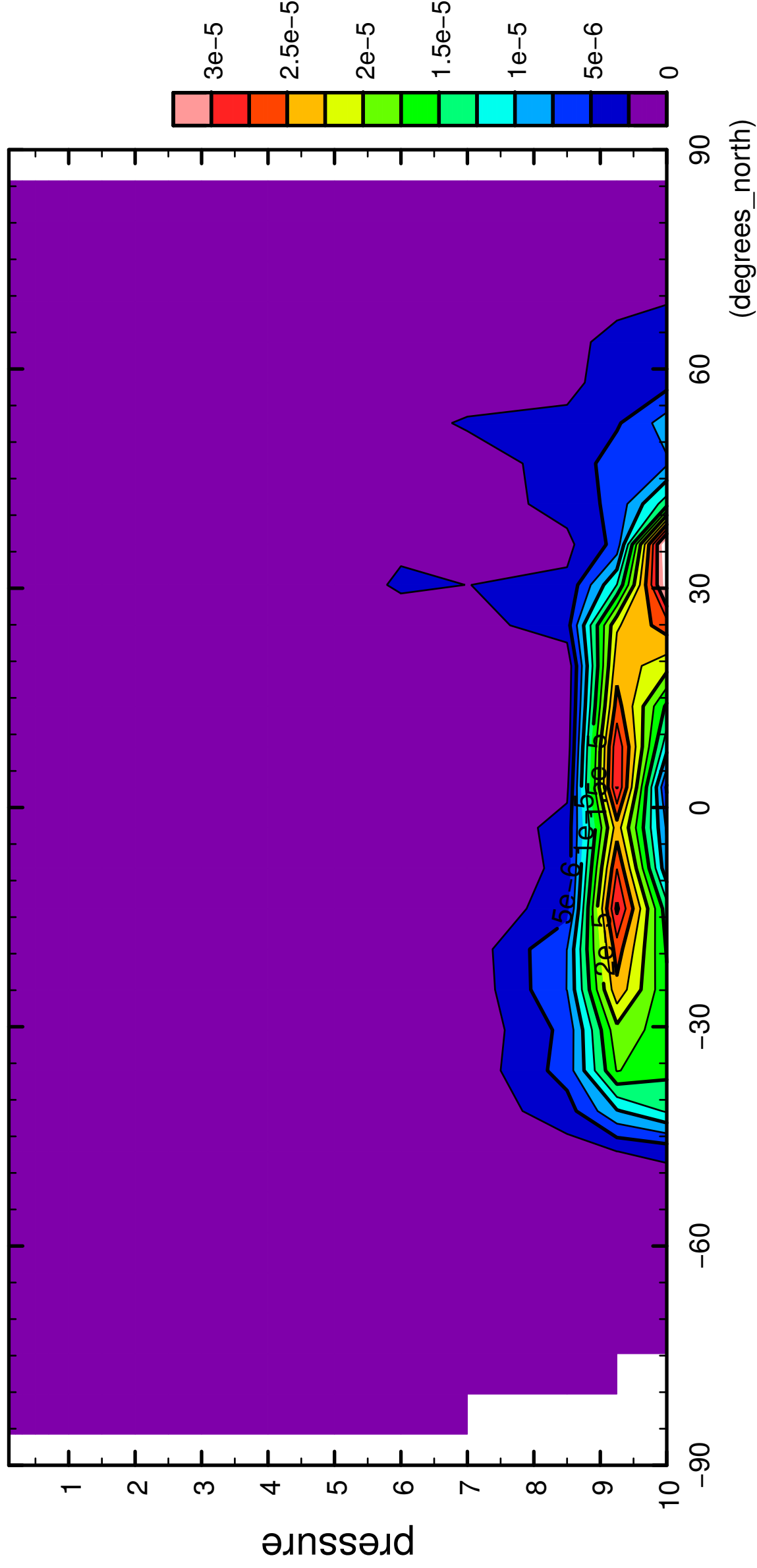
latitude

CONTOUR INTERVAL = 2.500E-06

5/12

QH2OLiq

($\times 10^4$ Pa)



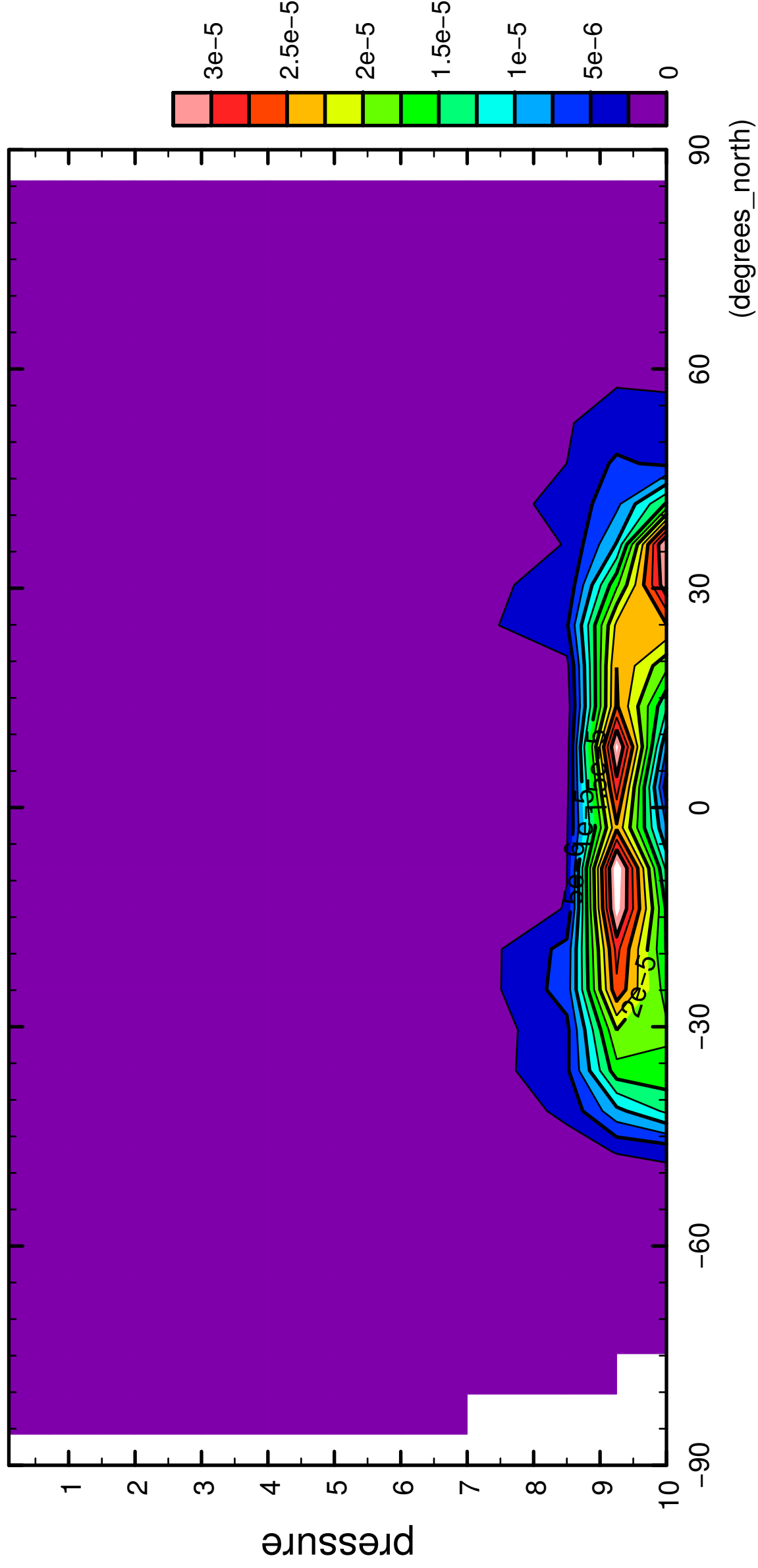
latitude

CONTOUR INTERVAL = $2.500E-06$

6/12

QH2OLiq

($\times 10^4$ Pa)

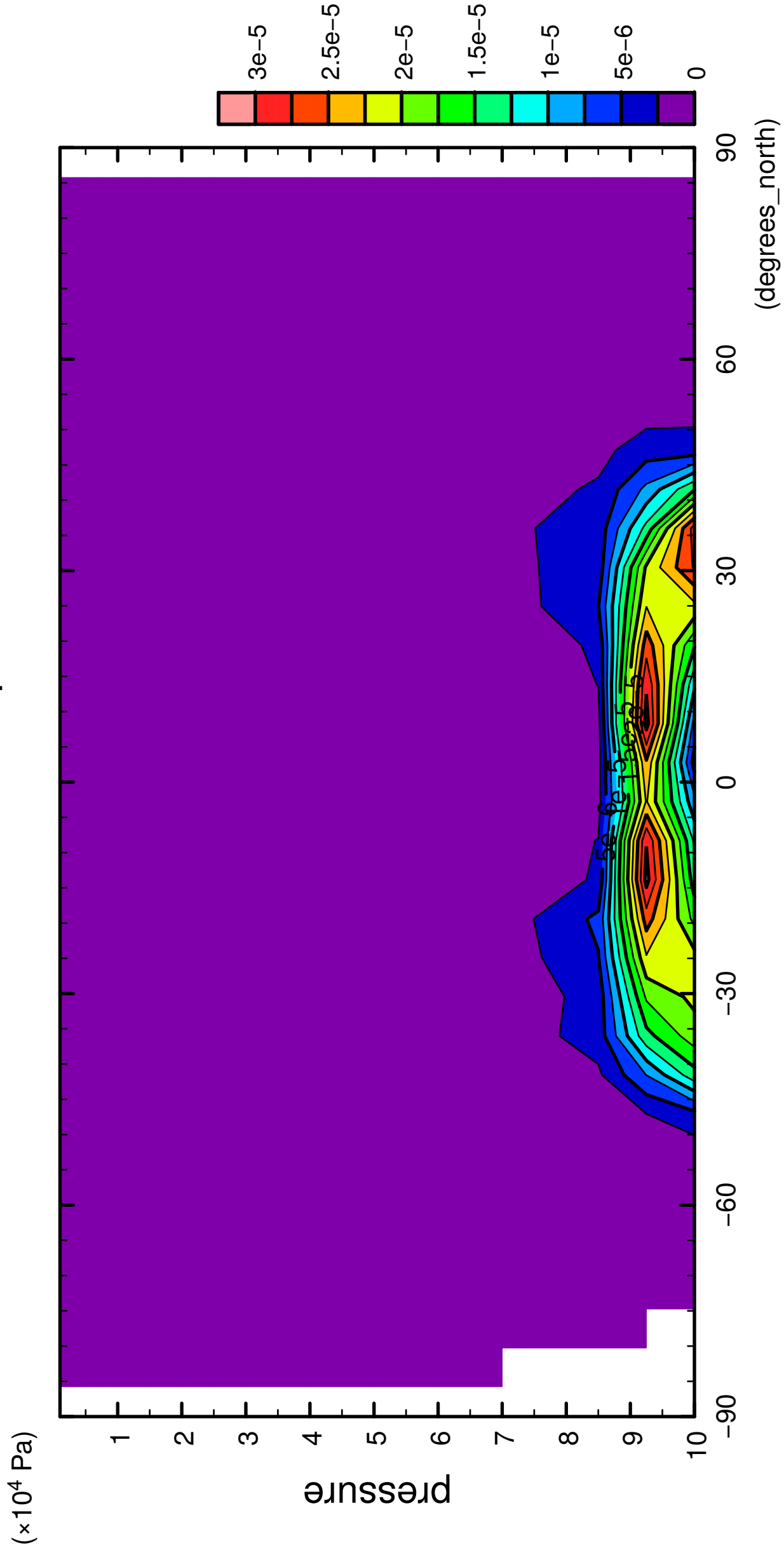


latitude

CONTOUR INTERVAL = 2.500×10^{-6}

7/12

QH2OLiq

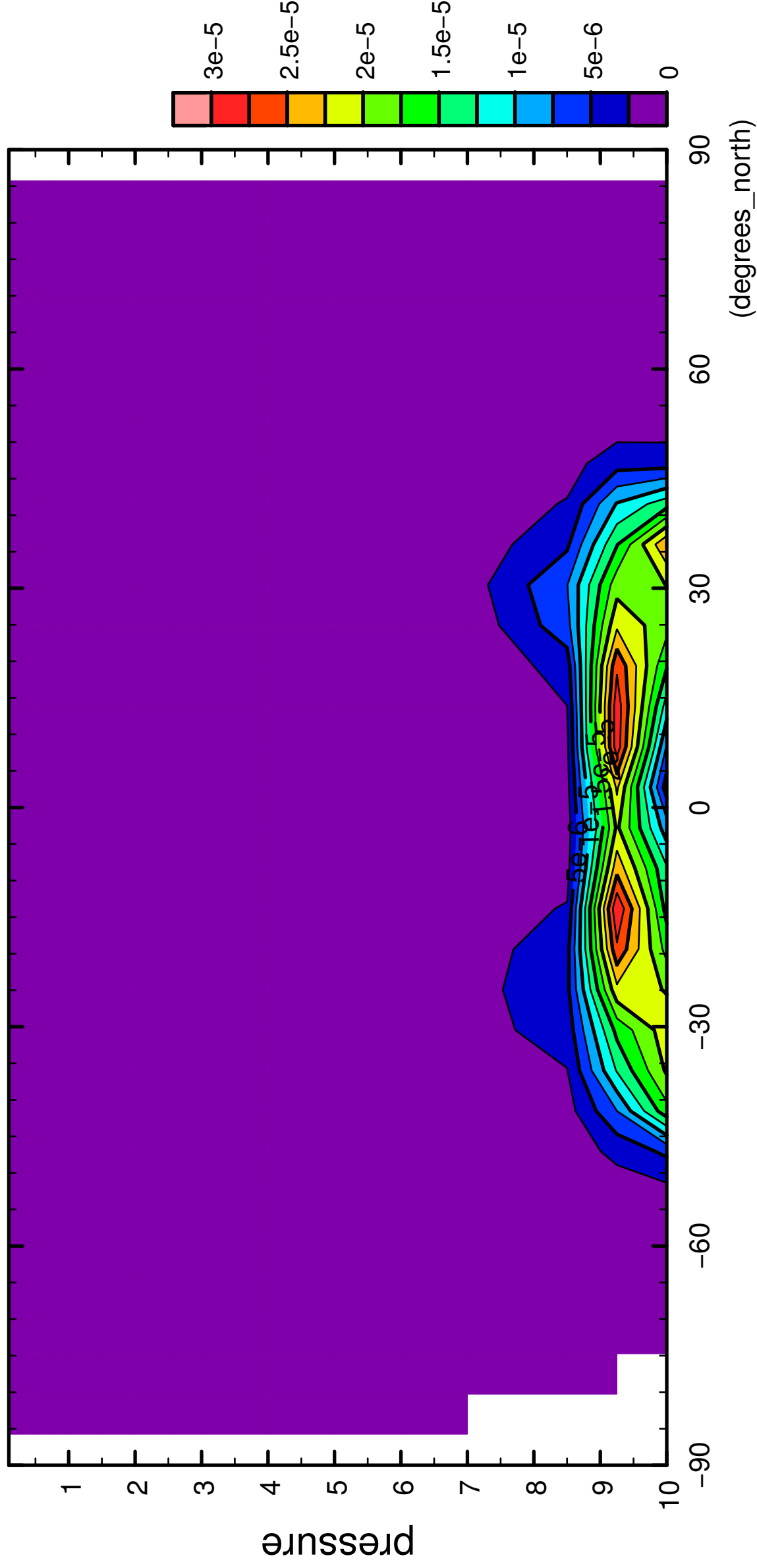


CONTOUR INTERVAL = 2.500E-06

8/12

QH2OLiq

($\times 10^4$ Pa)



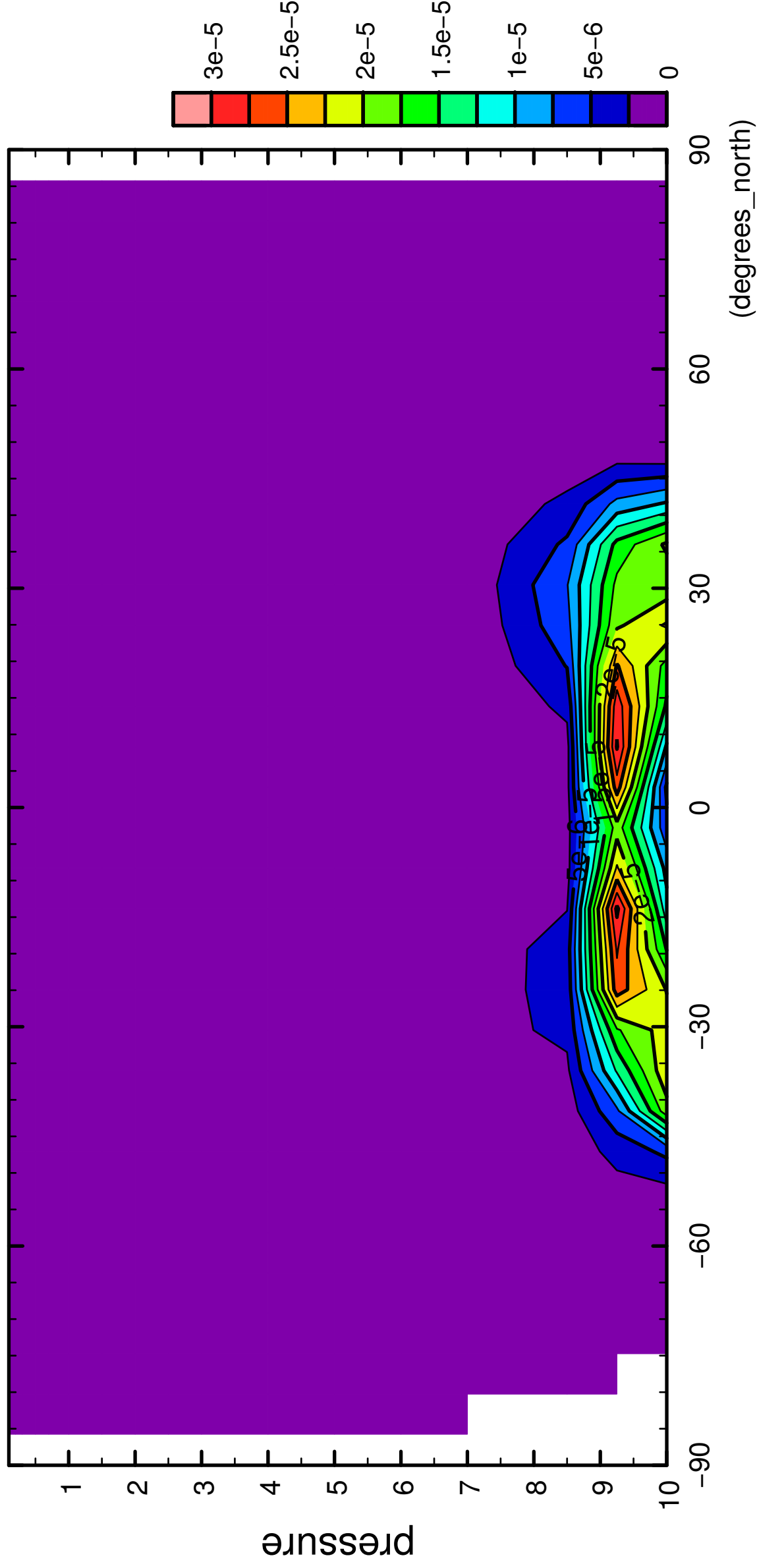
latitude

CONTOUR INTERVAL = 2.500×10^{-6}

9/12

QH2OLiq

($\times 10^4$ Pa)

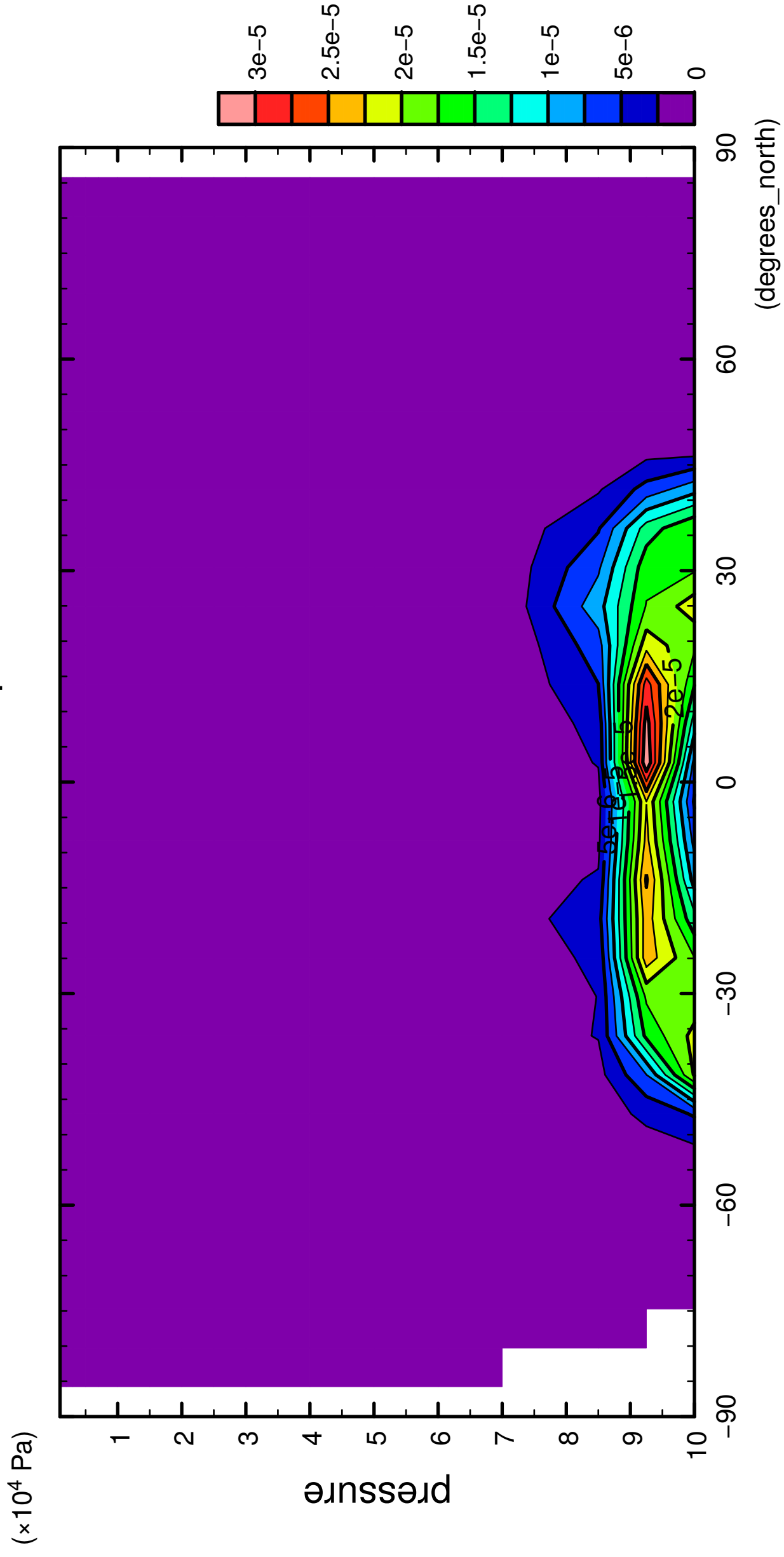


latitude

CONTOUR INTERVAL = 2.500×10^{-6}

10/12

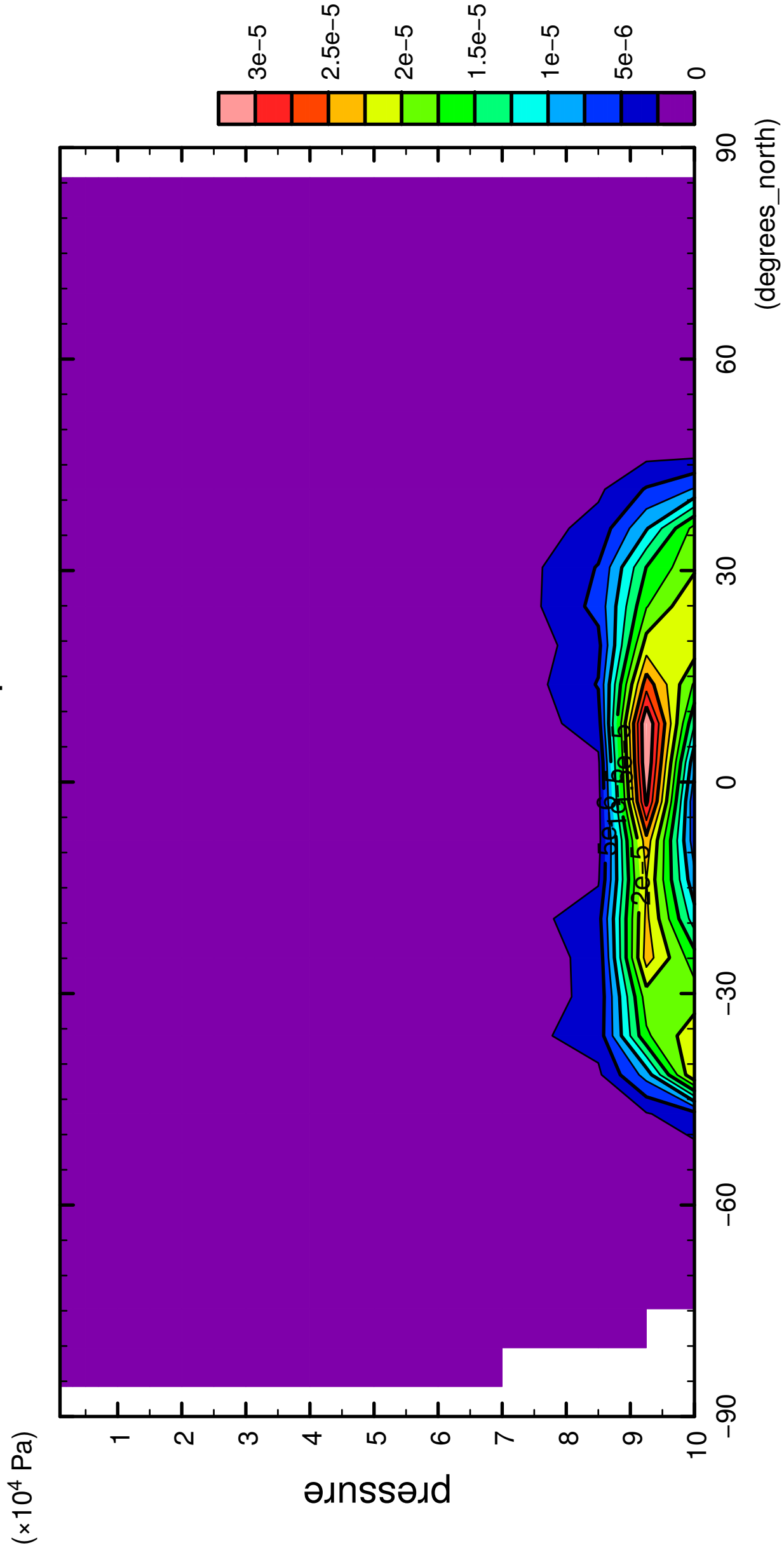
QH2OLiq



CONTOUR INTERVAL = 2.500E-06

11/12

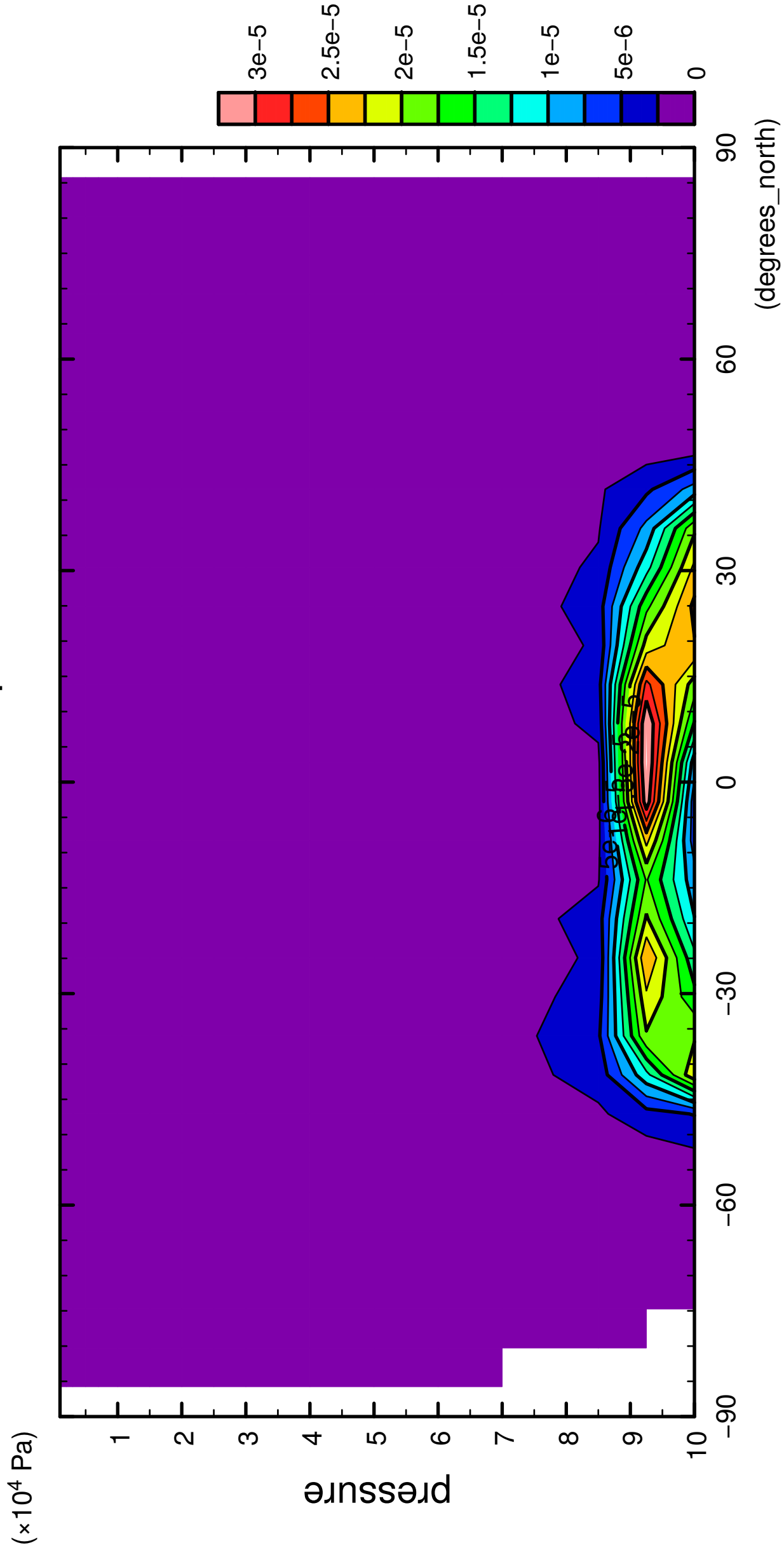
QH2OLiq



CONTOUR INTERVAL = 2.500E-06

12/12

QH2OLiq



latitude

CONTOUR INTERVAL = 2.500E-06