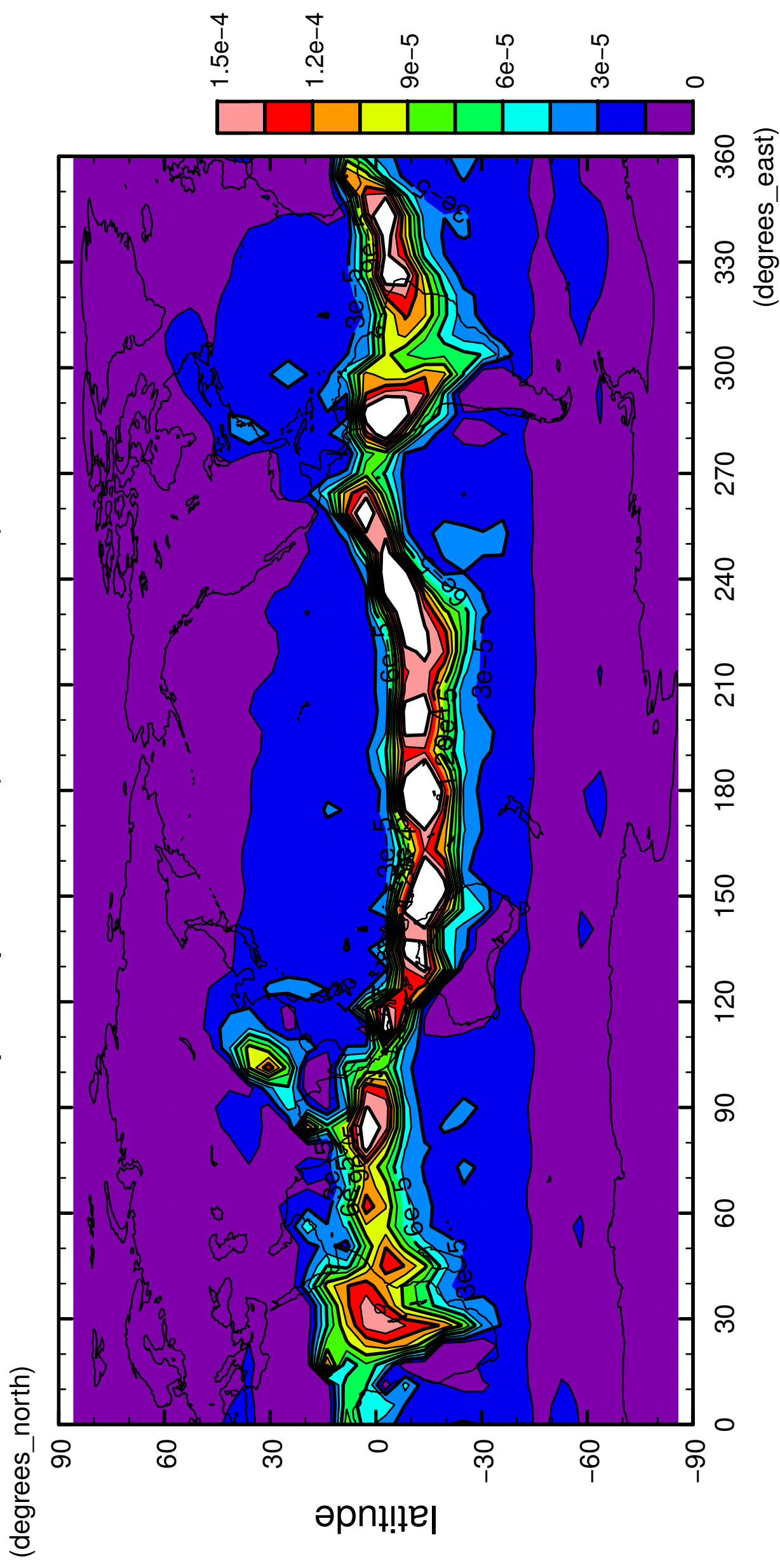


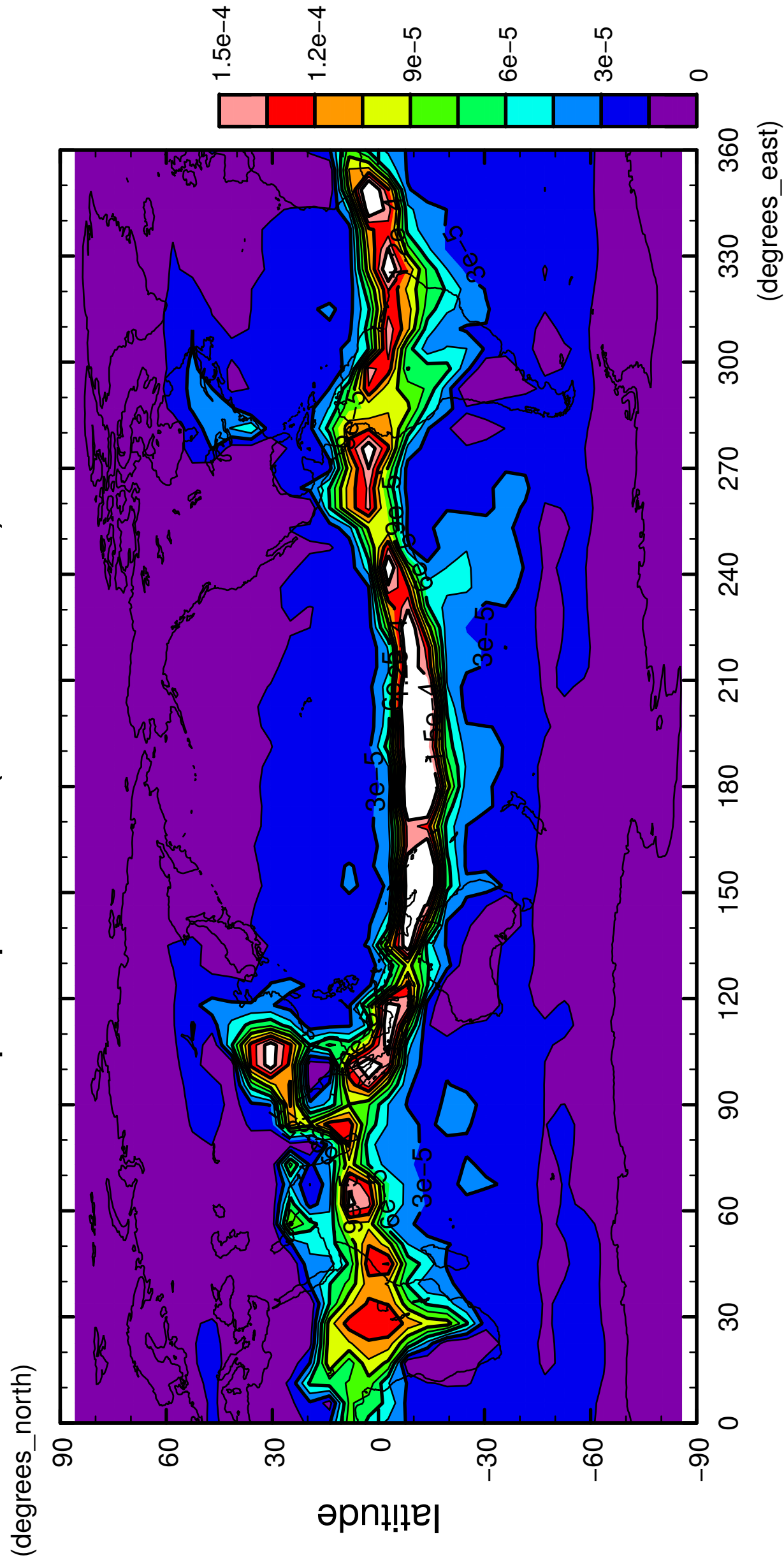
1/12

# precipitation (rain + snow)



2/12

# precipitation (rain + snow)

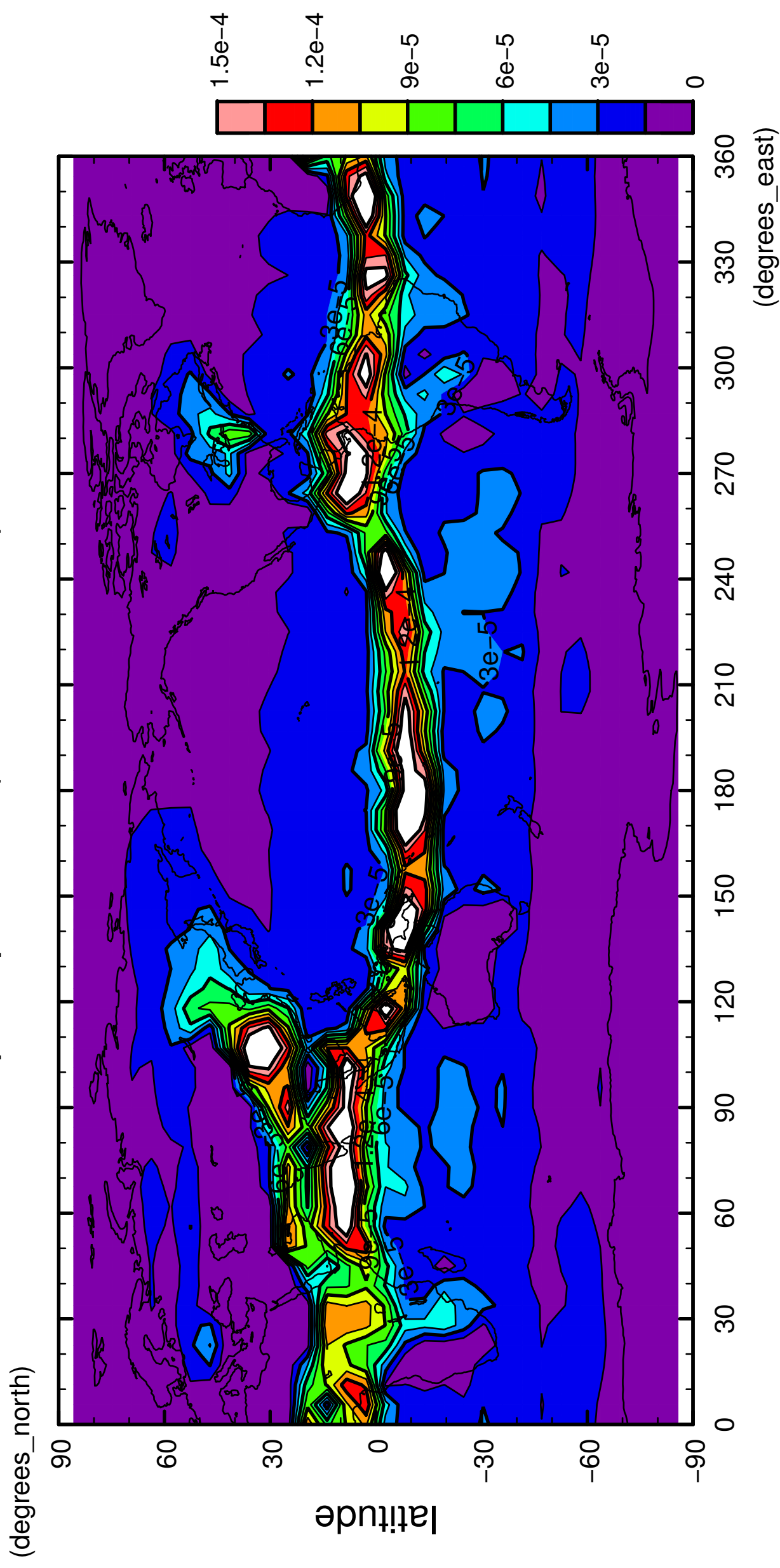


longitude

CONTOUR INTERVAL = 1.500E-05

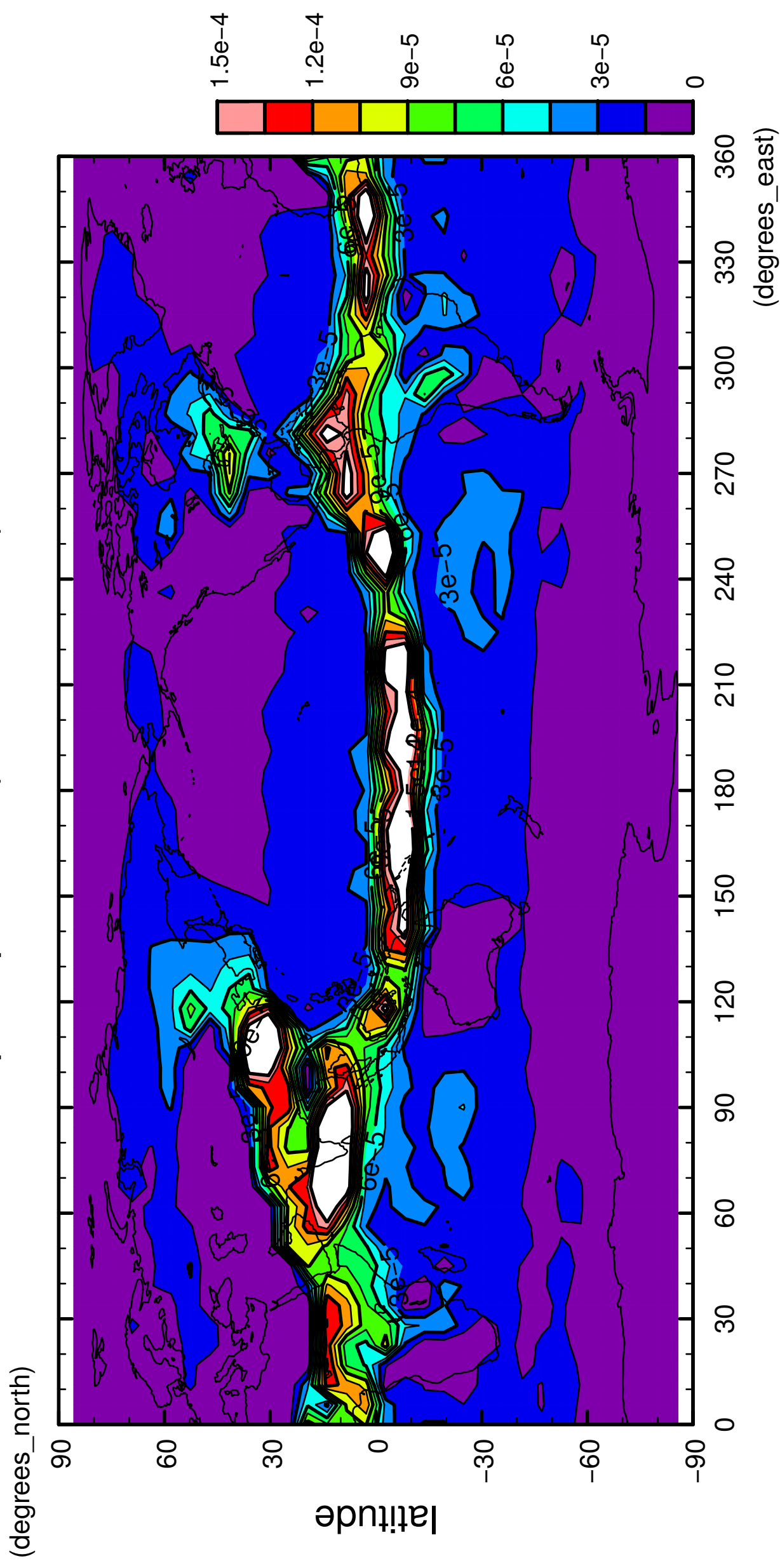
3/12

# precipitation (rain + snow)



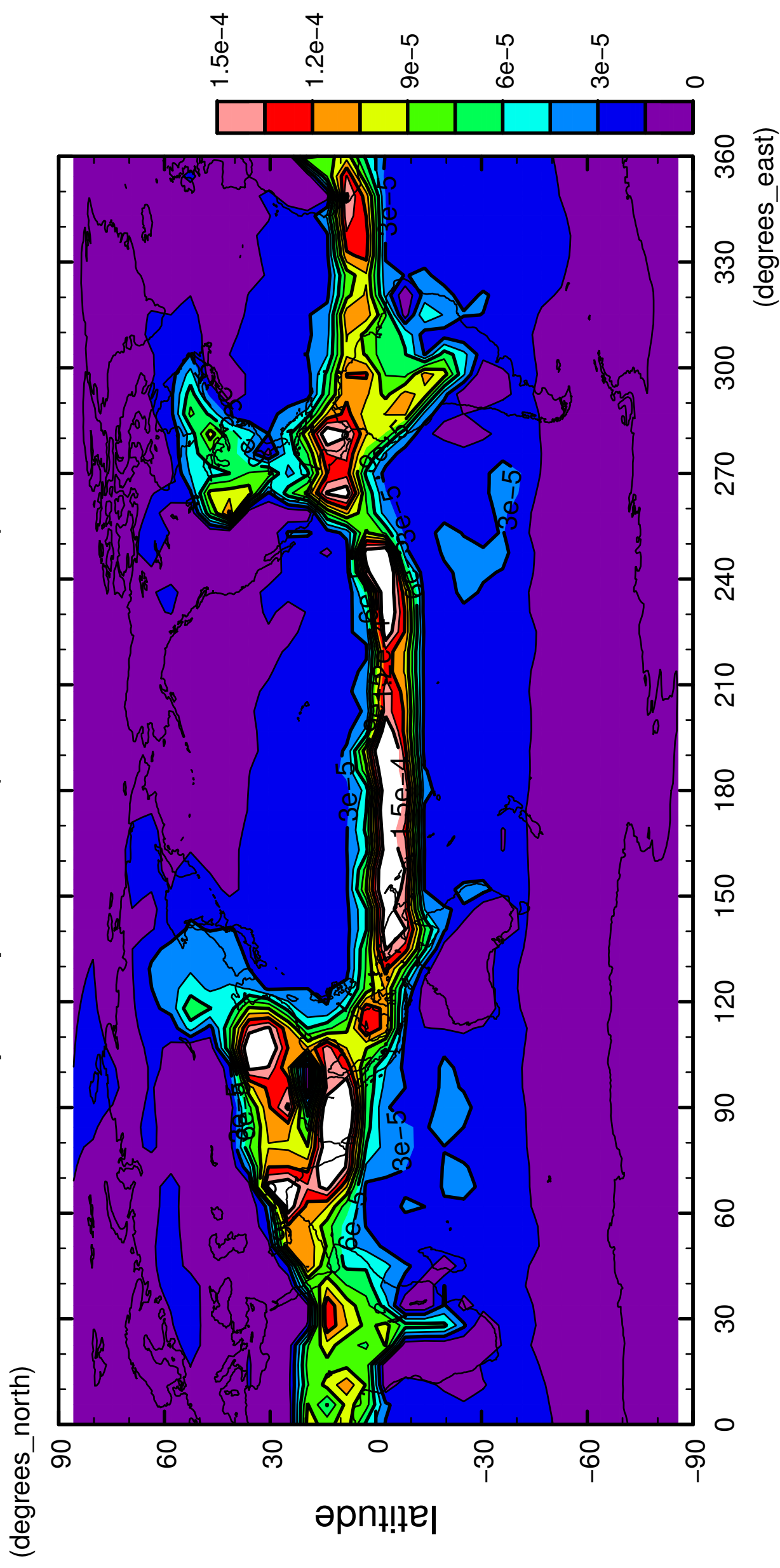
4/12

# precipitation (rain + snow)



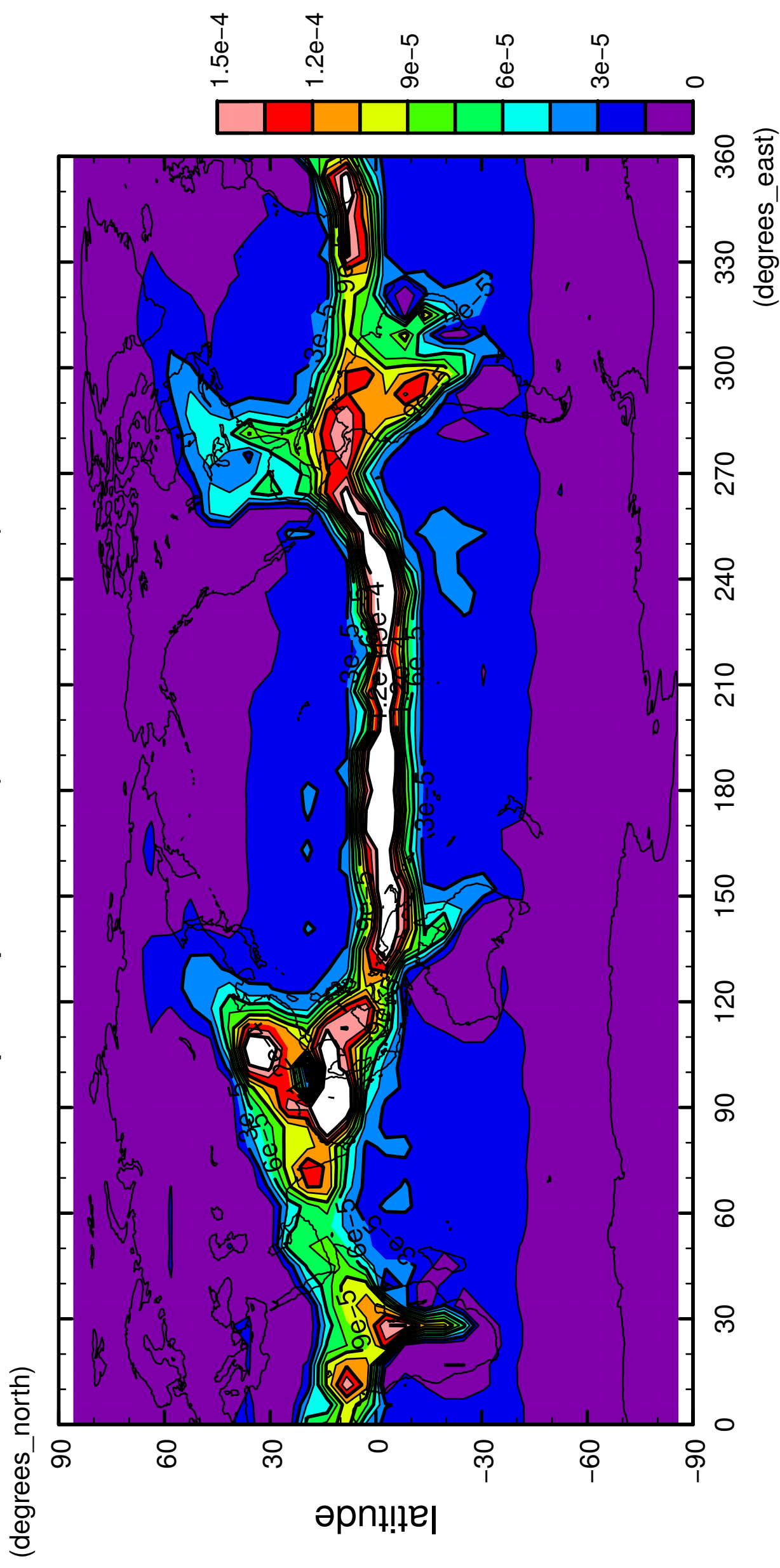
5/12

# precipitation (rain + snow)



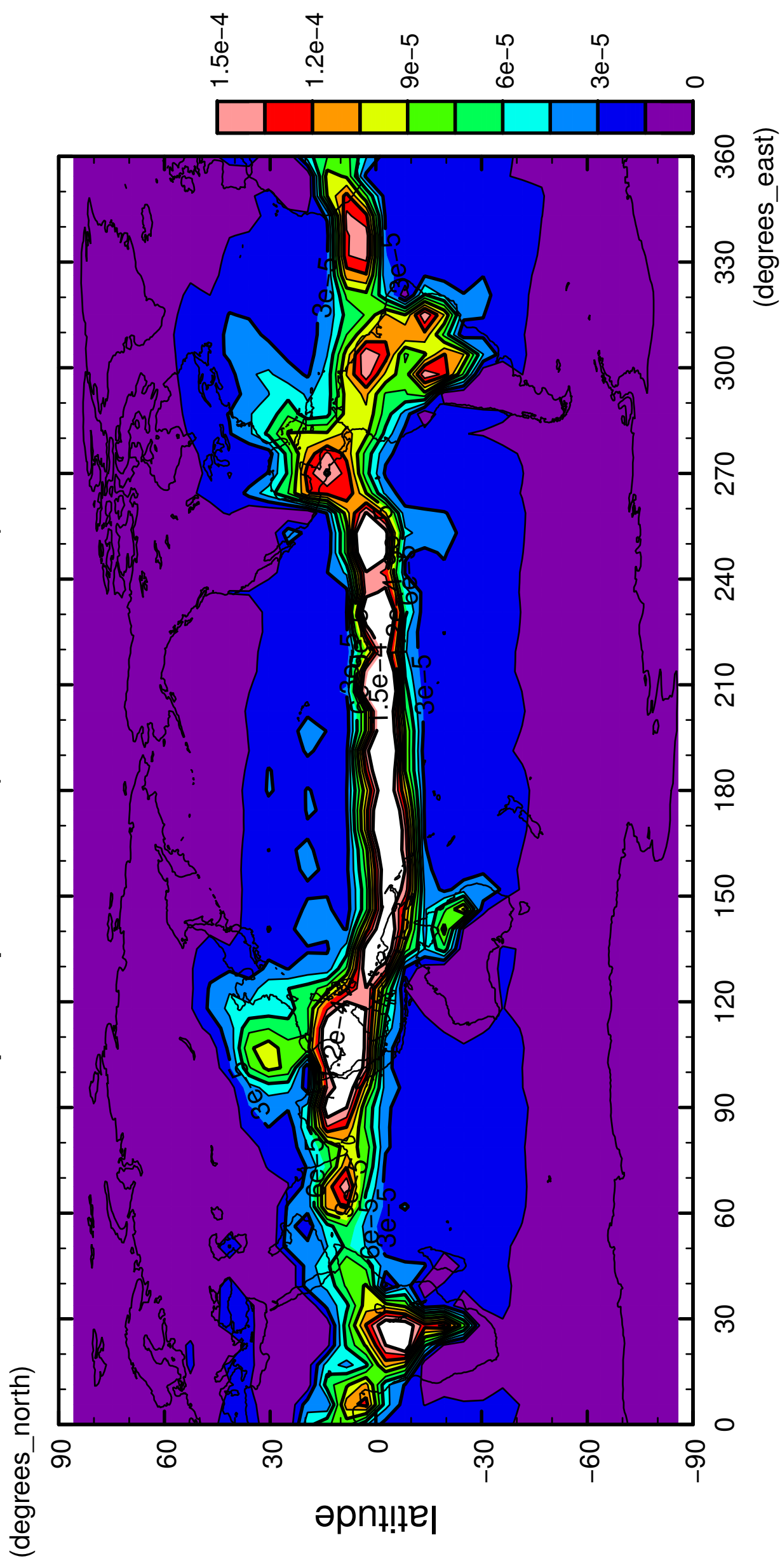
6/12

precipitation (rain + snow)



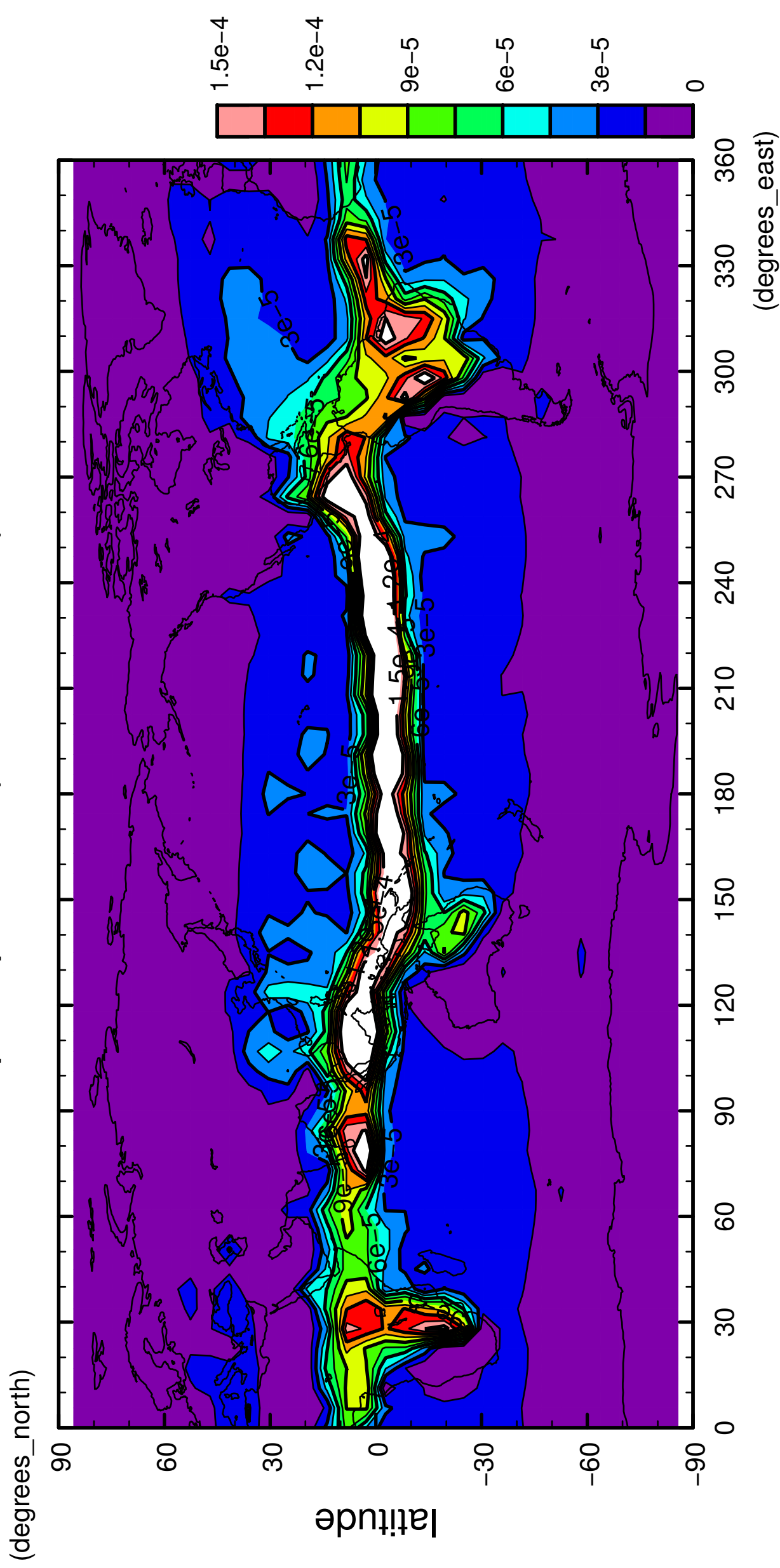
7/12

# precipitation (rain + snow)



8/12

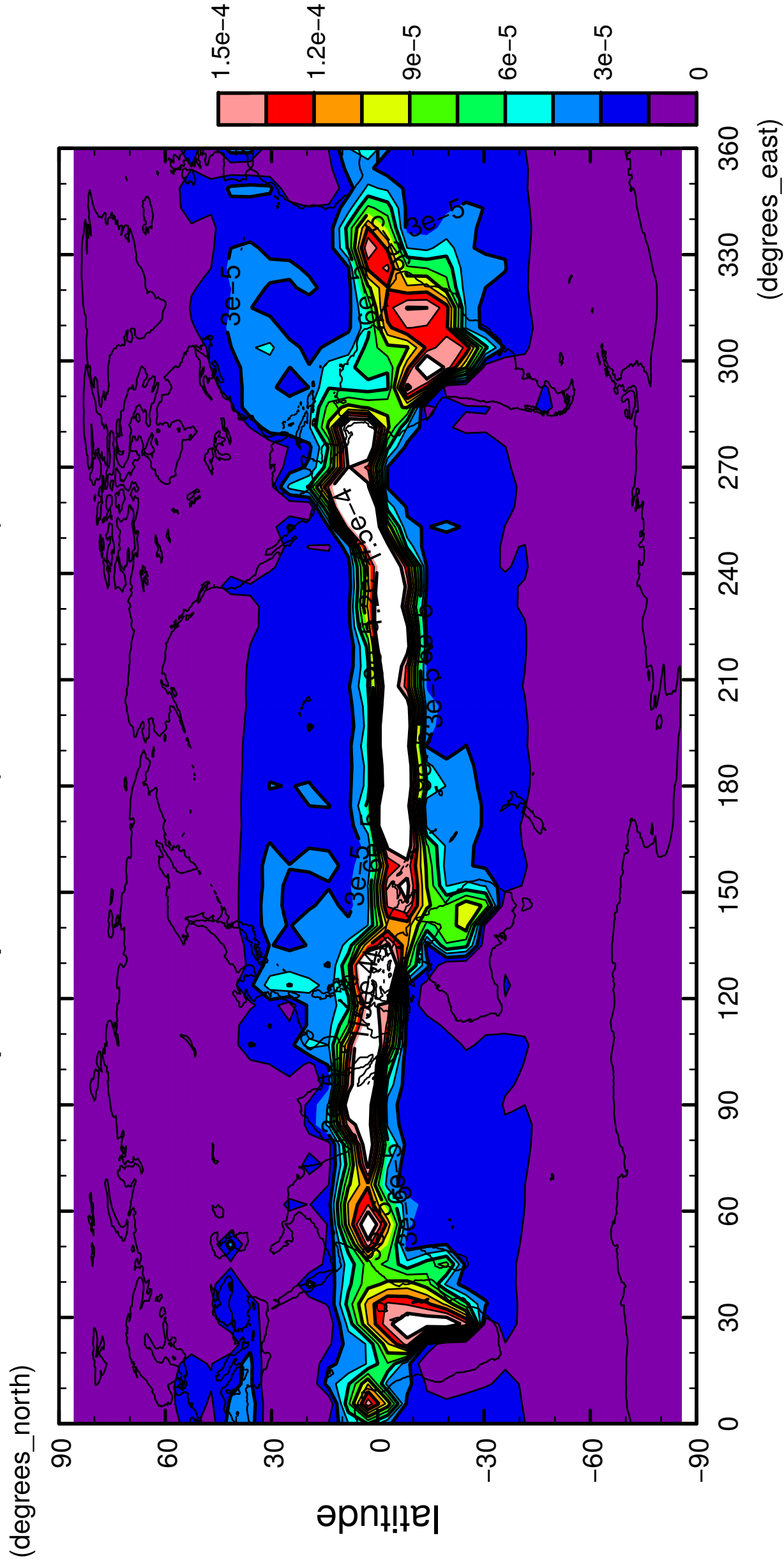
precipitation (rain + snow)





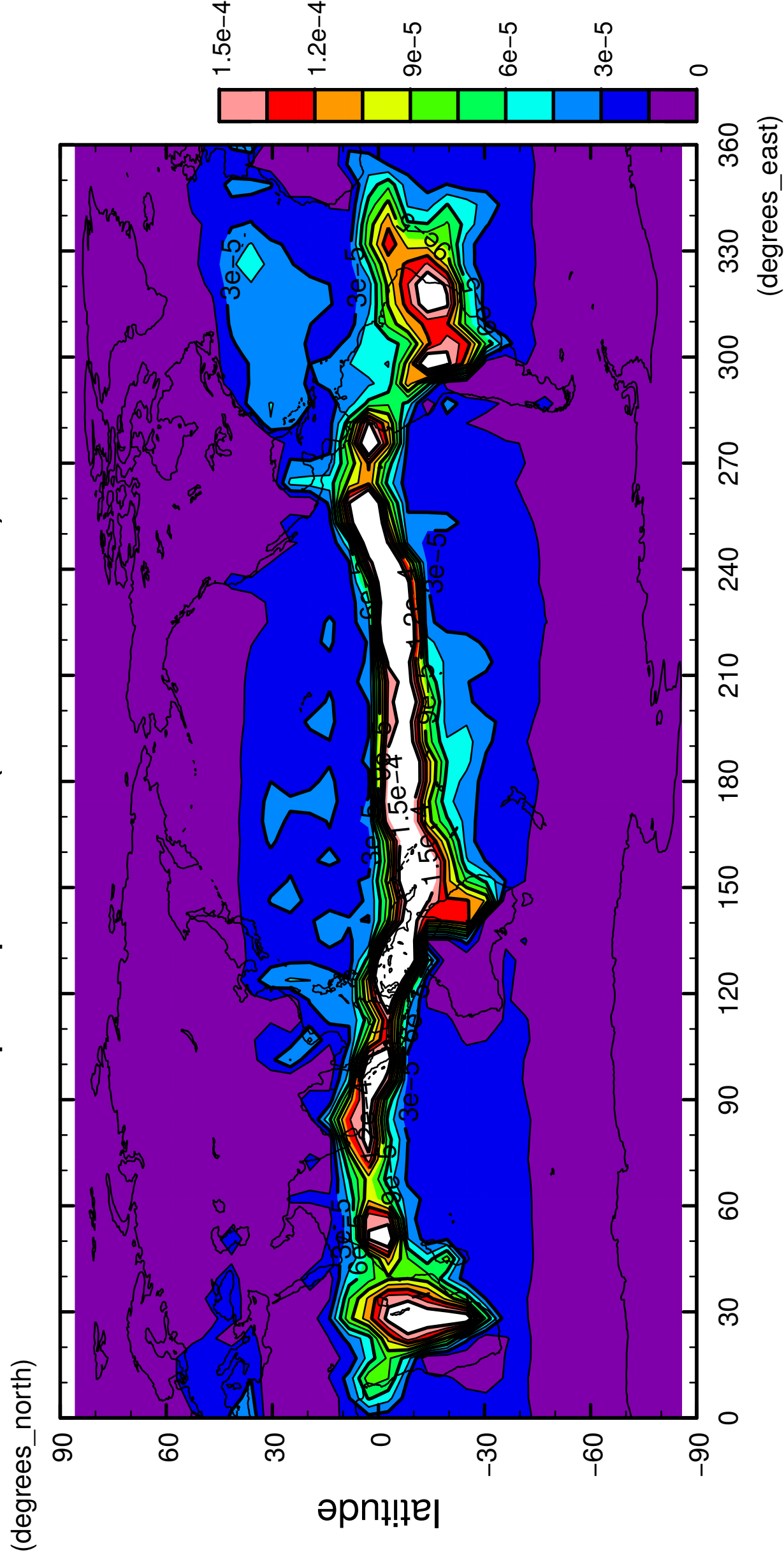
9/12

precipitation (rain + snow)



10/12

precipitation (rain + snow)

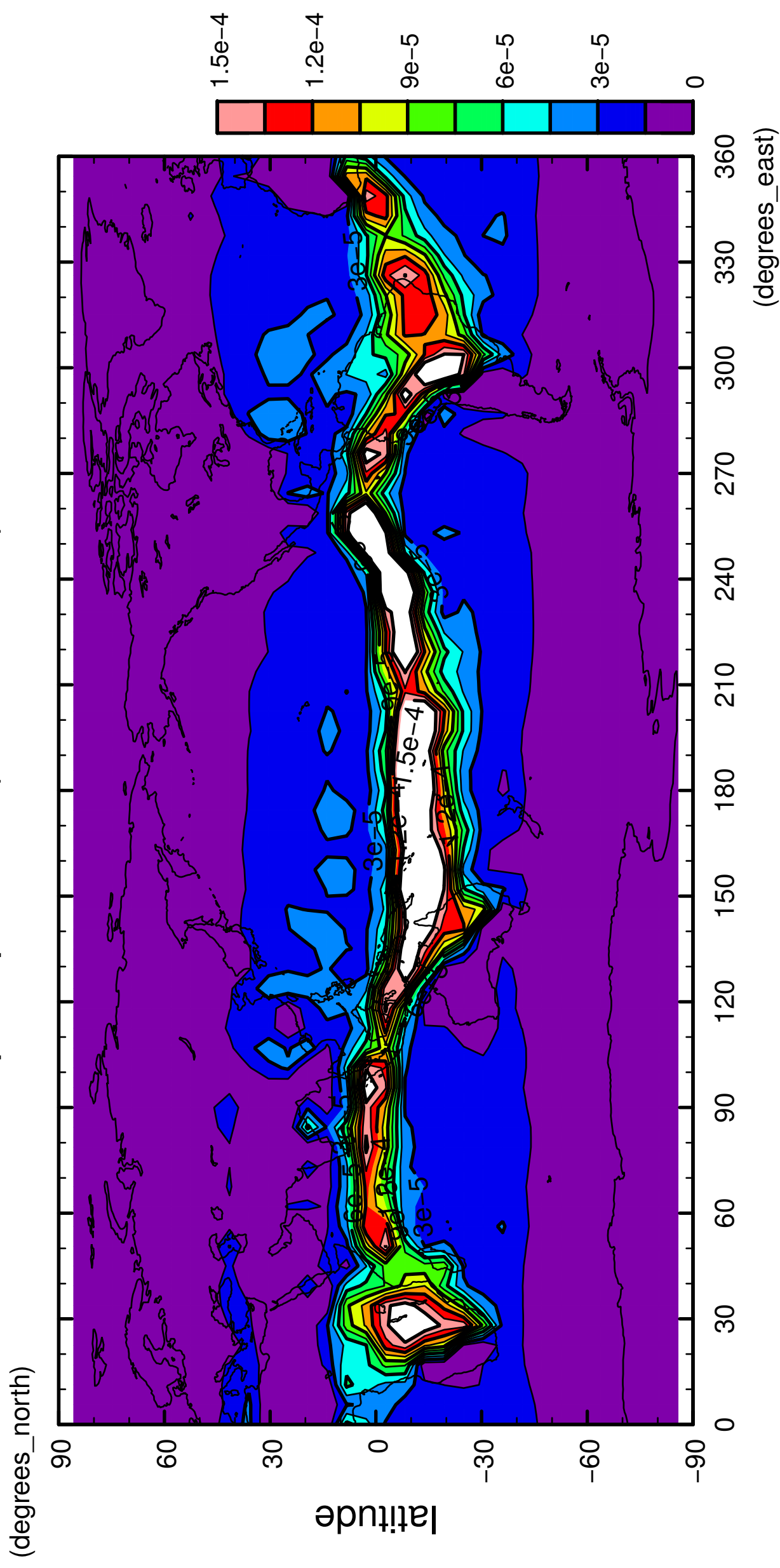


longitude

CONTOUR INTERVAL = 1.500E-05

11/12

precipitation (rain + snow)



12/12

precipitation (rain + snow)

