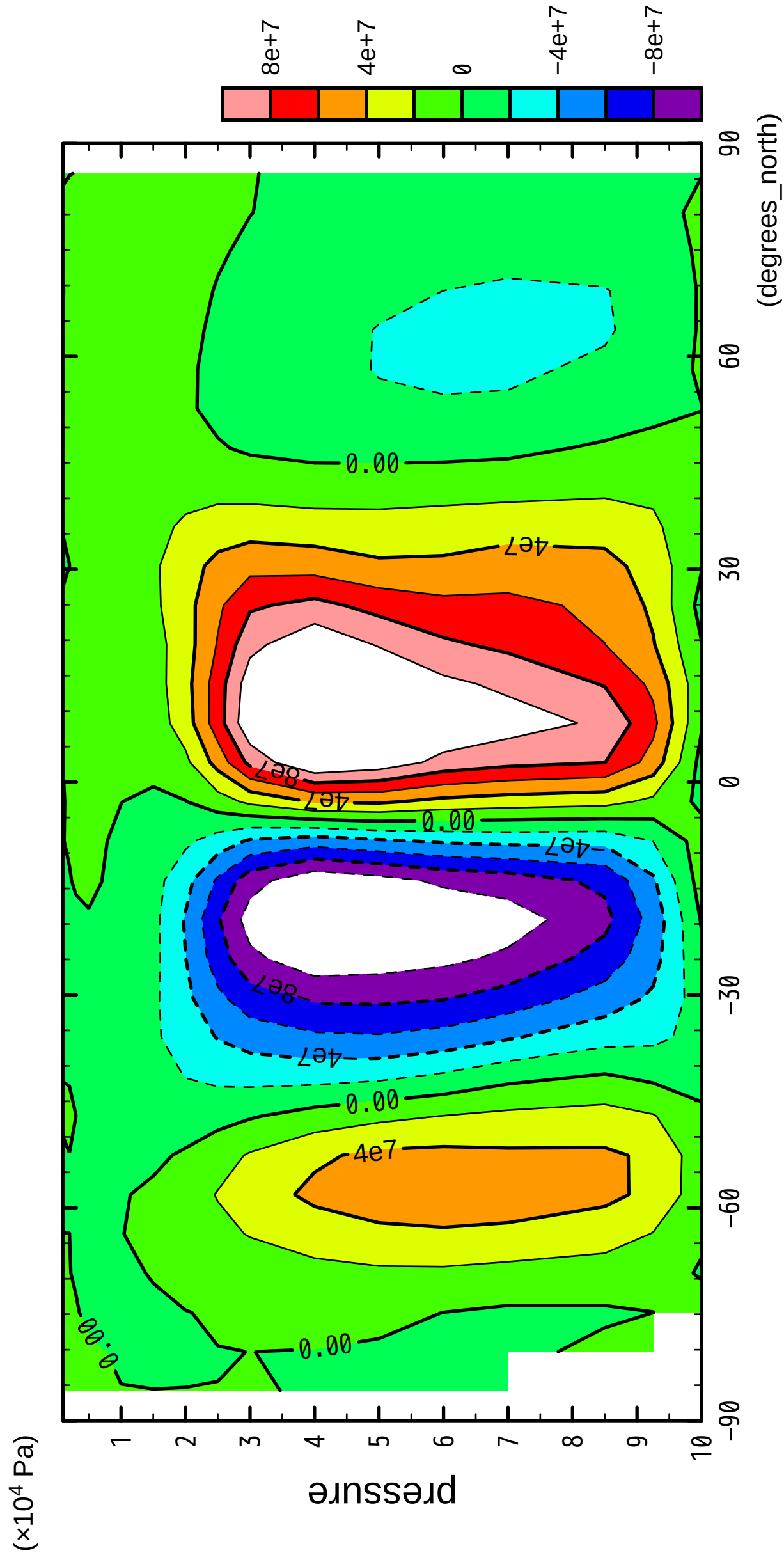


1/12

MSF

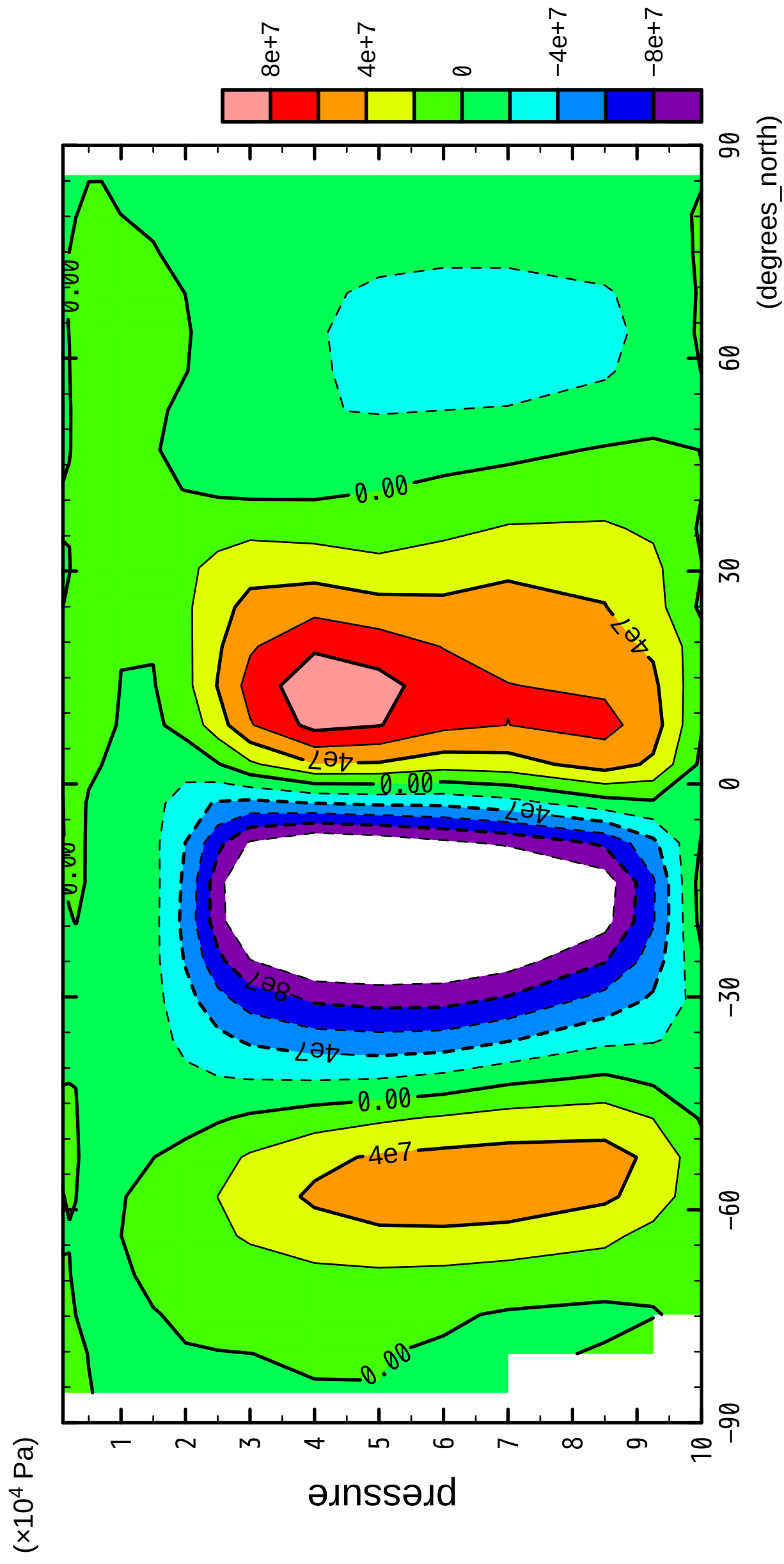


latitude

CONTOUR INTERVAL = 2.000E+07

2/12

MSF



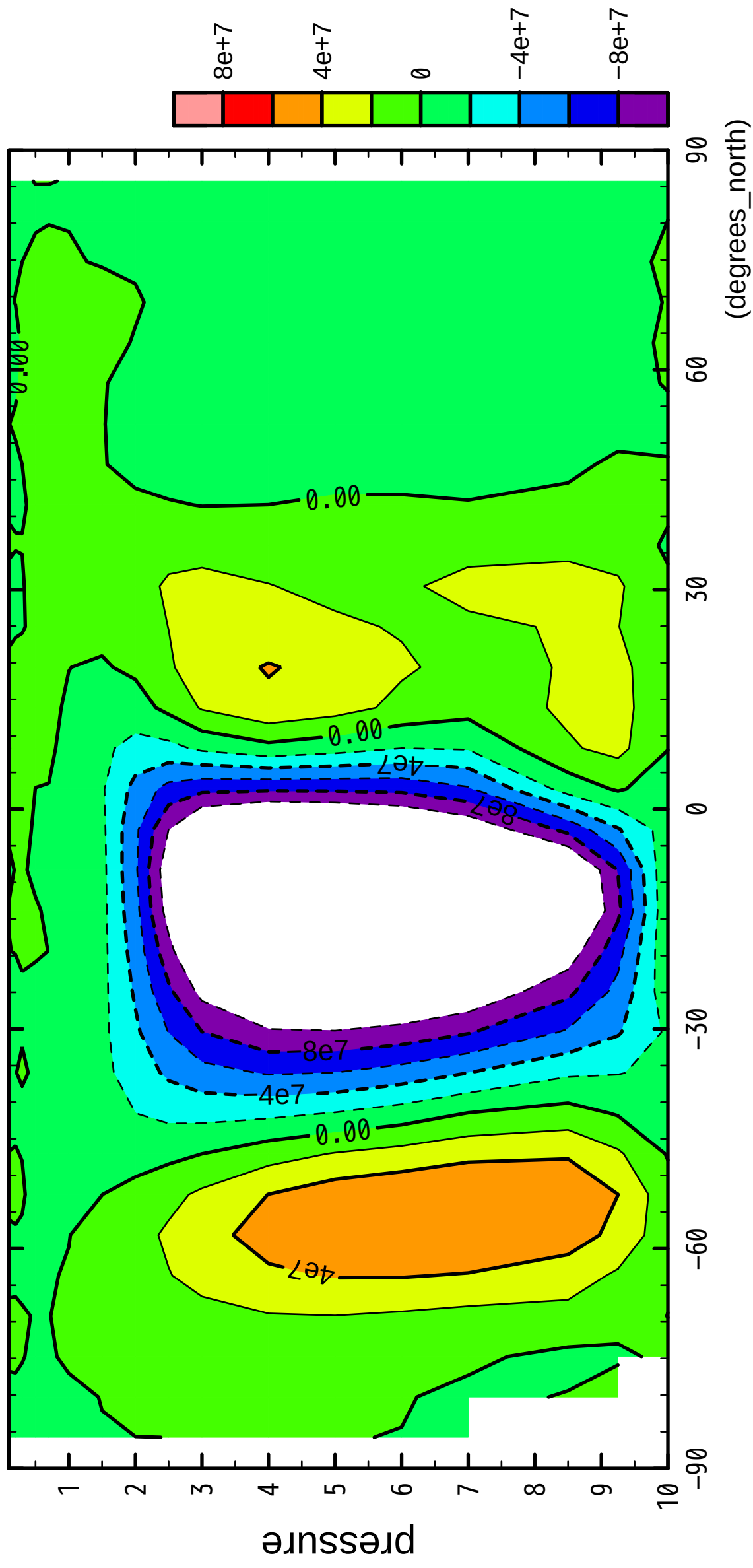
latitude

CONTOUR INTERVAL = 2.000E+07

3/12

MSF

( $\times 10^4$  Pa)



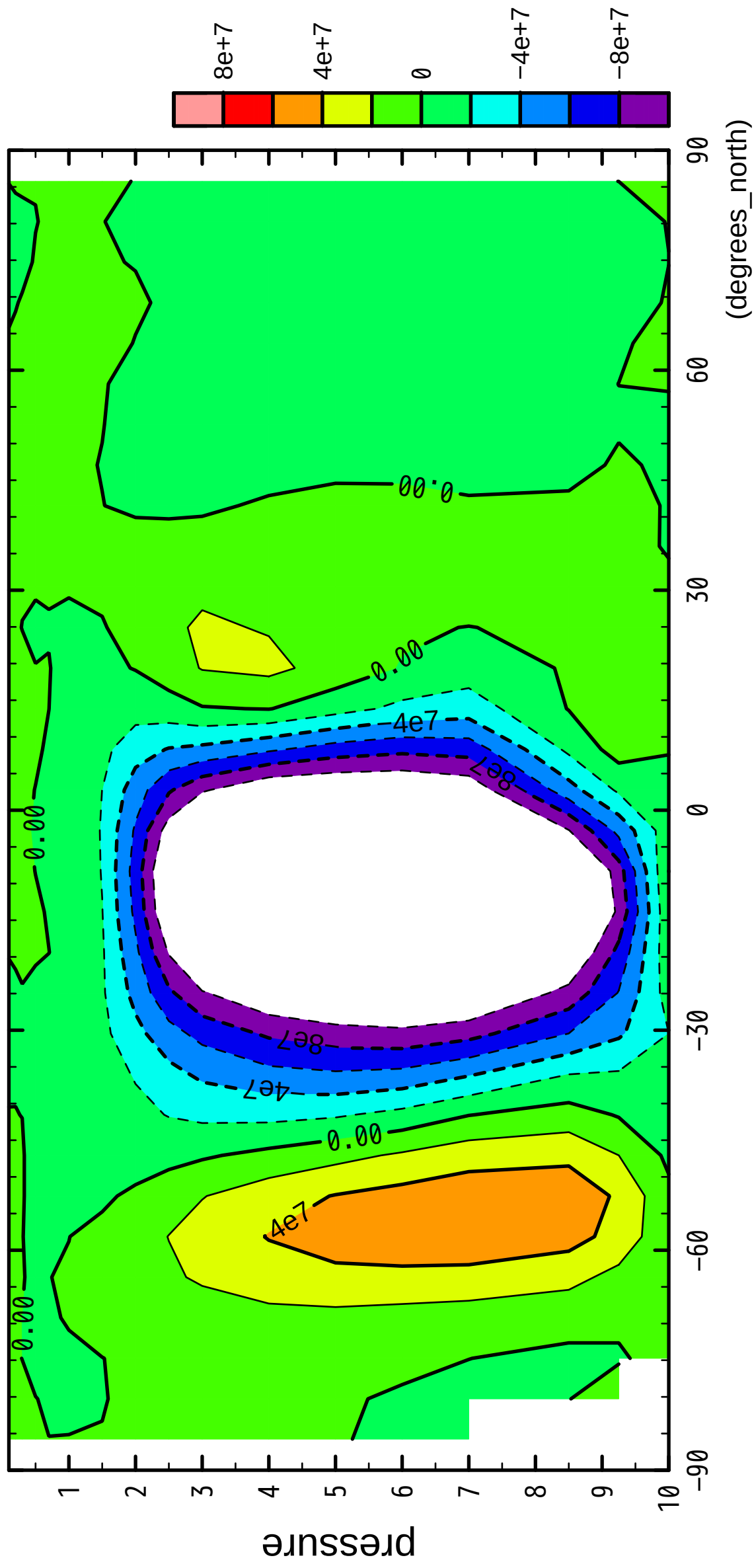
latitude

CONTOUR INTERVAL = 2.000E+07

4/12

MSF

( $\times 10^4$  Pa)



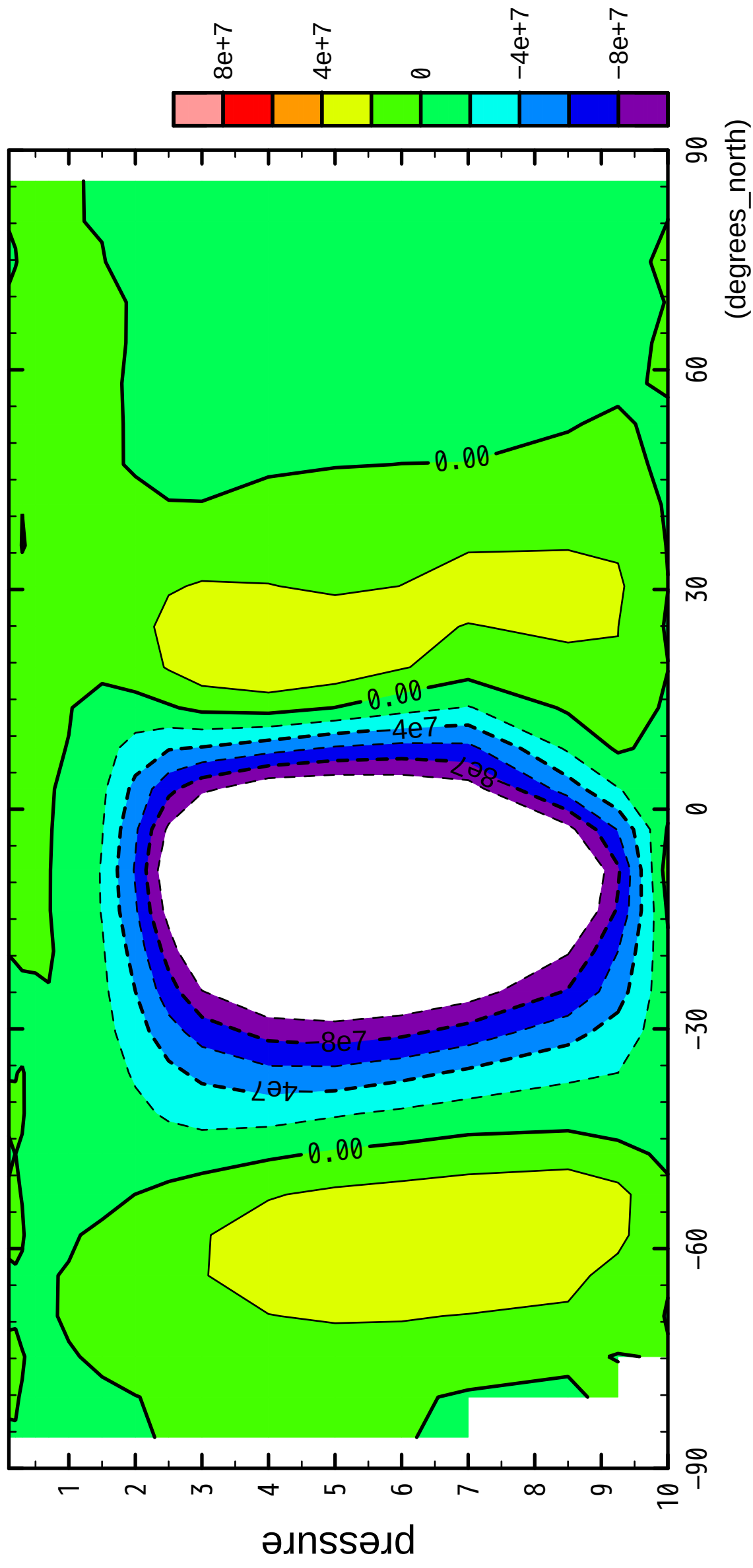
latitude

CONTOUR INTERVAL = 2.000E+07

5/12

MSF

( $\times 10^4$  Pa)



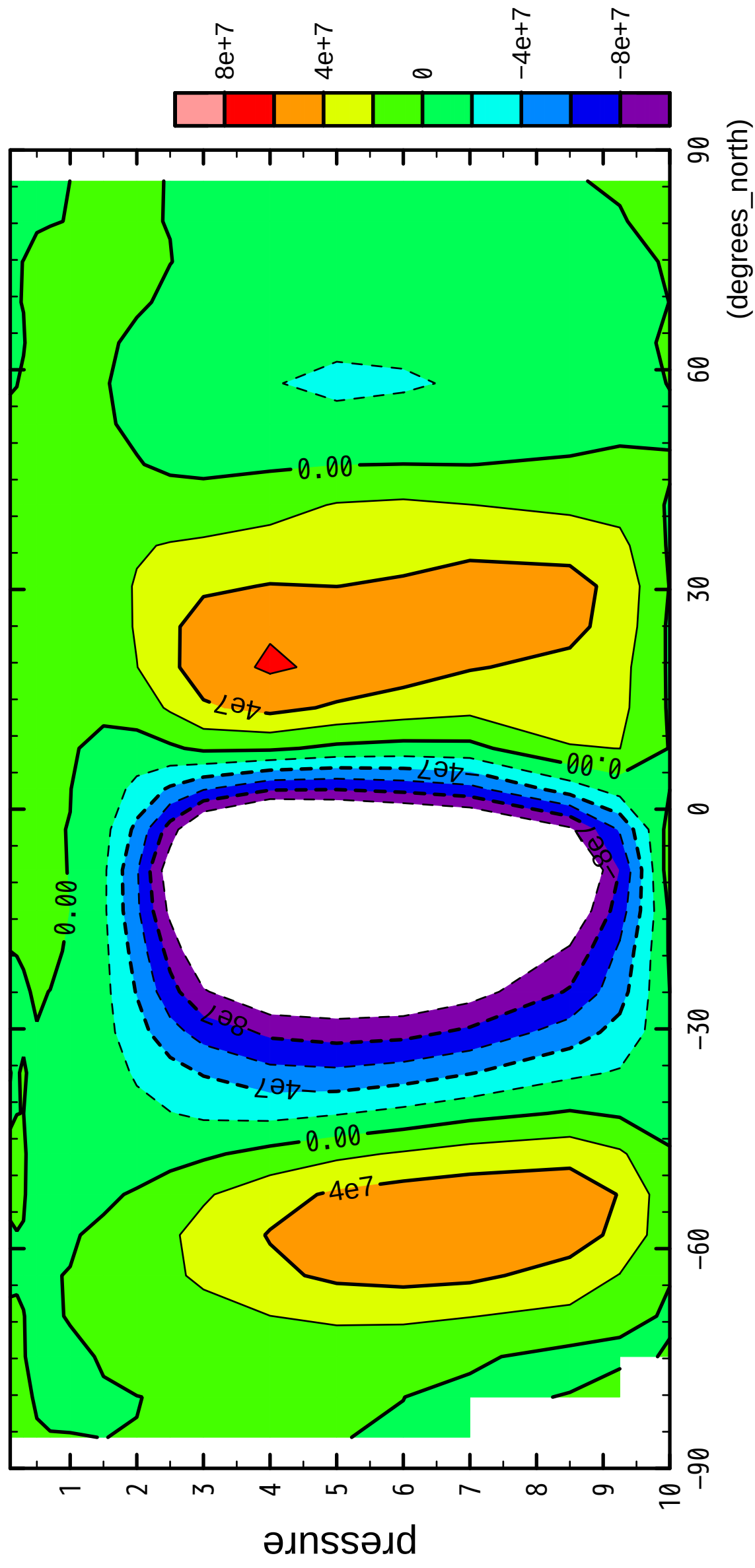
latitude

CONTOUR INTERVAL = 2.000E+07

6/12

MSF

( $\times 10^4$  Pa)



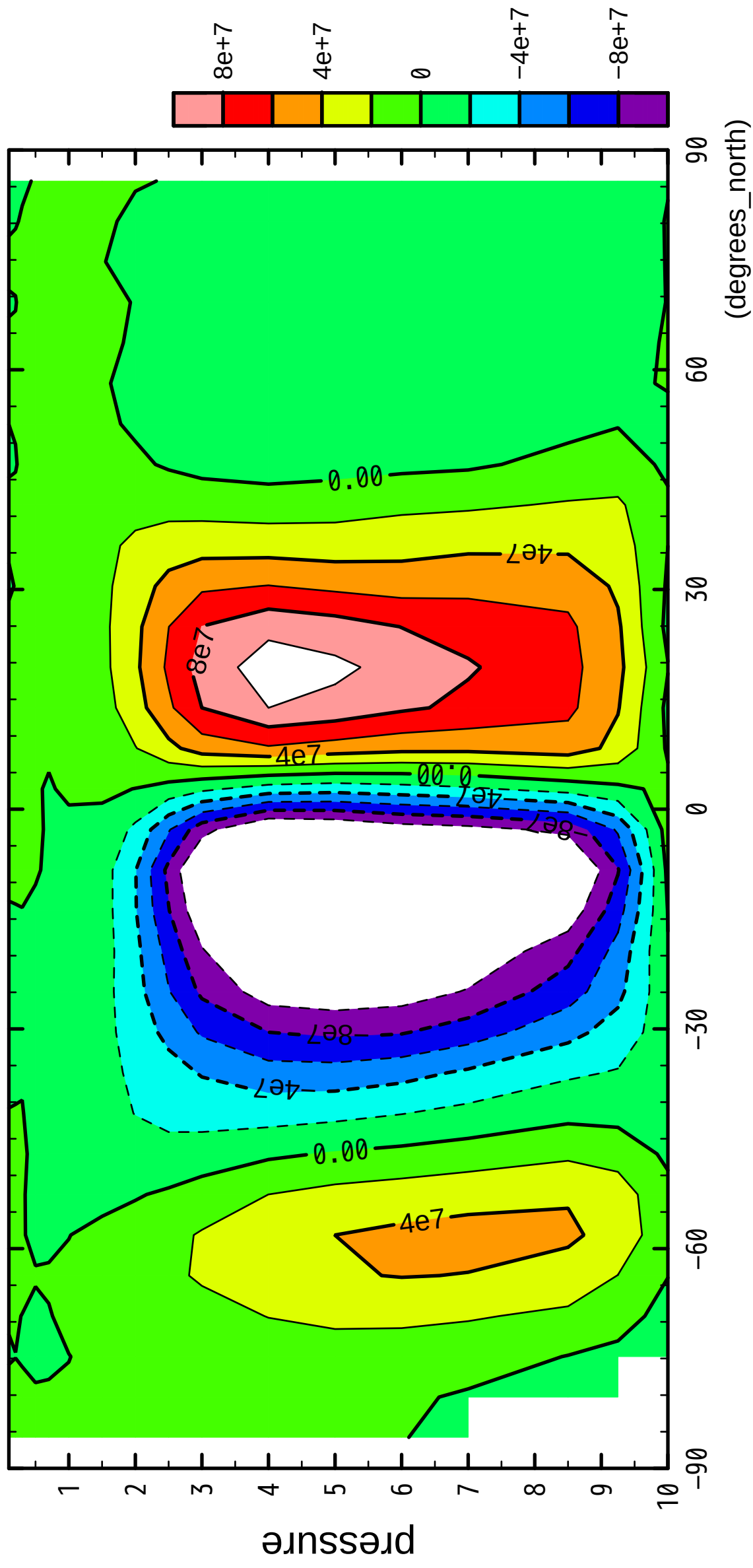
latitude

CONTOUR INTERVAL =  $2.000E+07$

7/12

MSF

( $\times 10^4$  Pa)

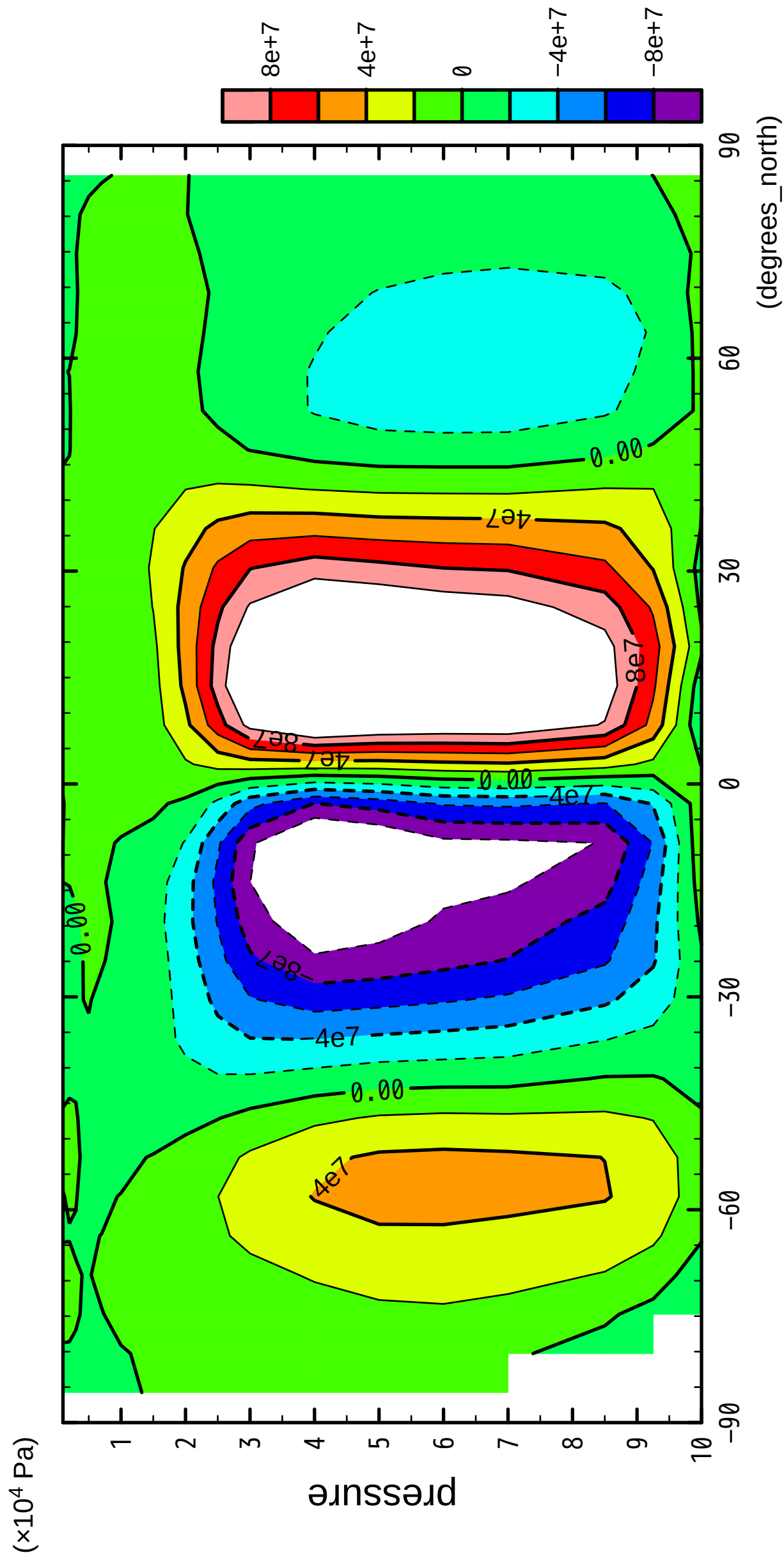


latitude

CONTOUR INTERVAL = 2.000E+07

8/12

MSF



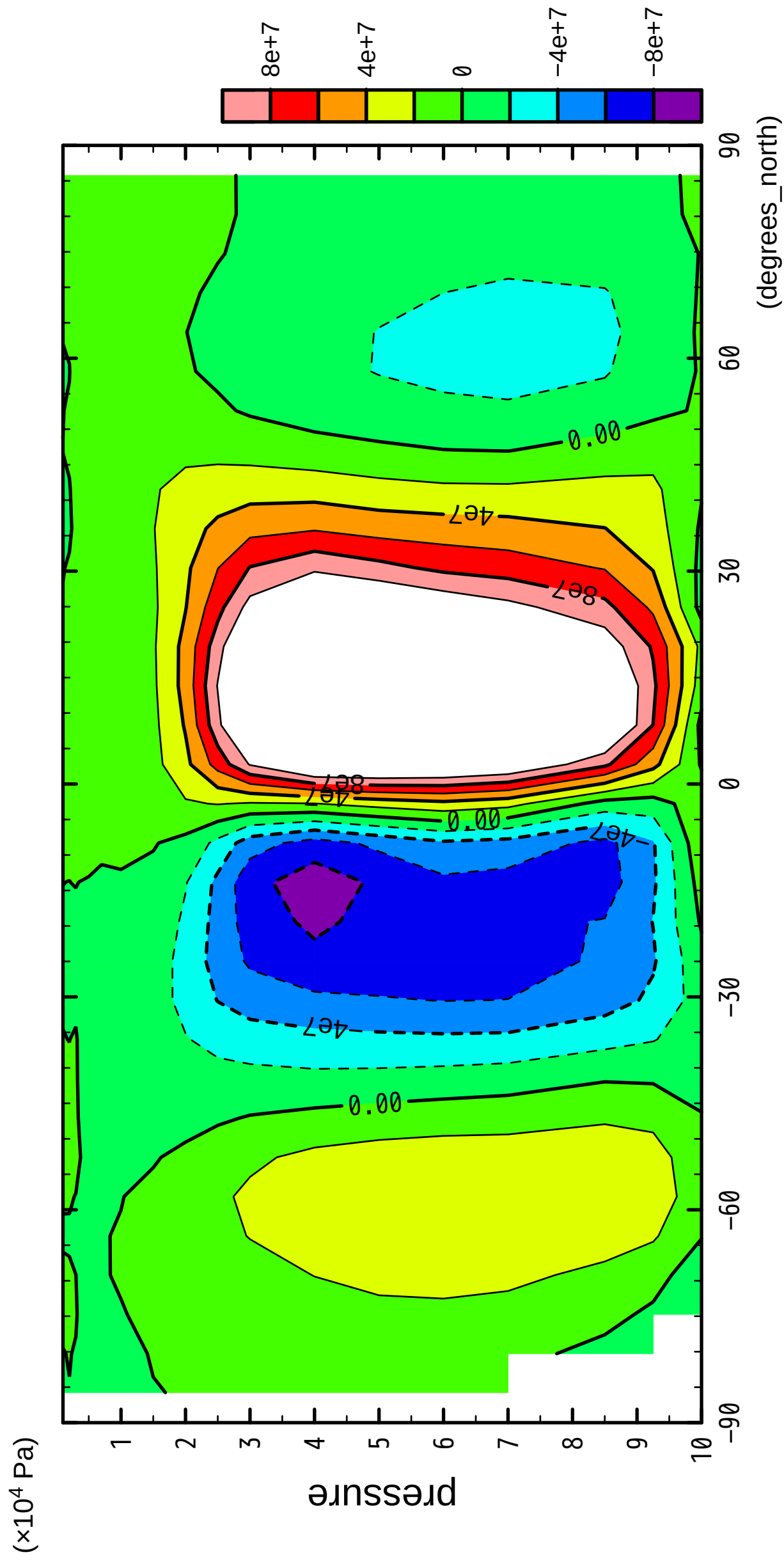
latitude

CONTOUR INTERVAL = 2.000E+07



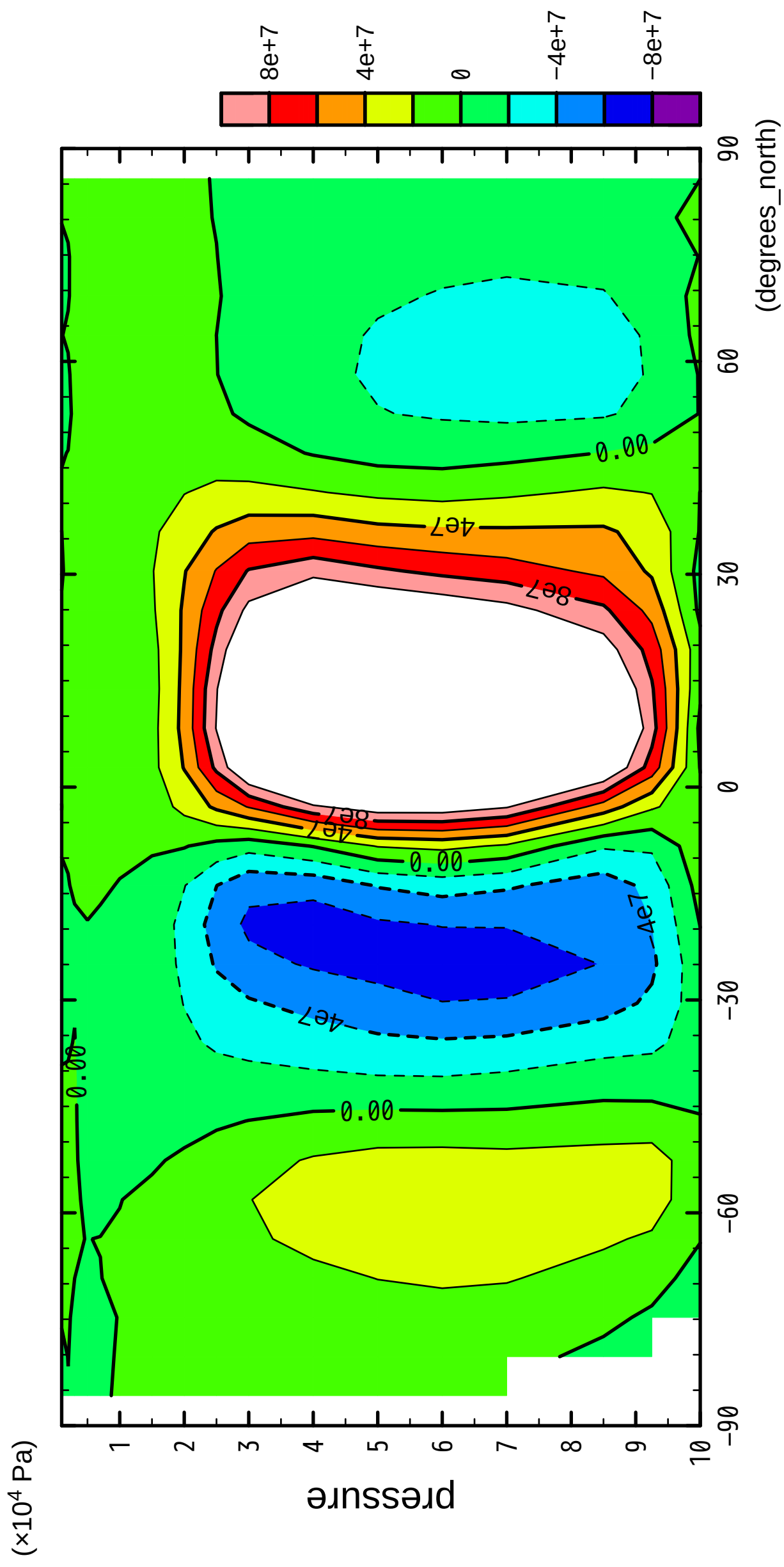
9/12

MSF



10/12

MSF

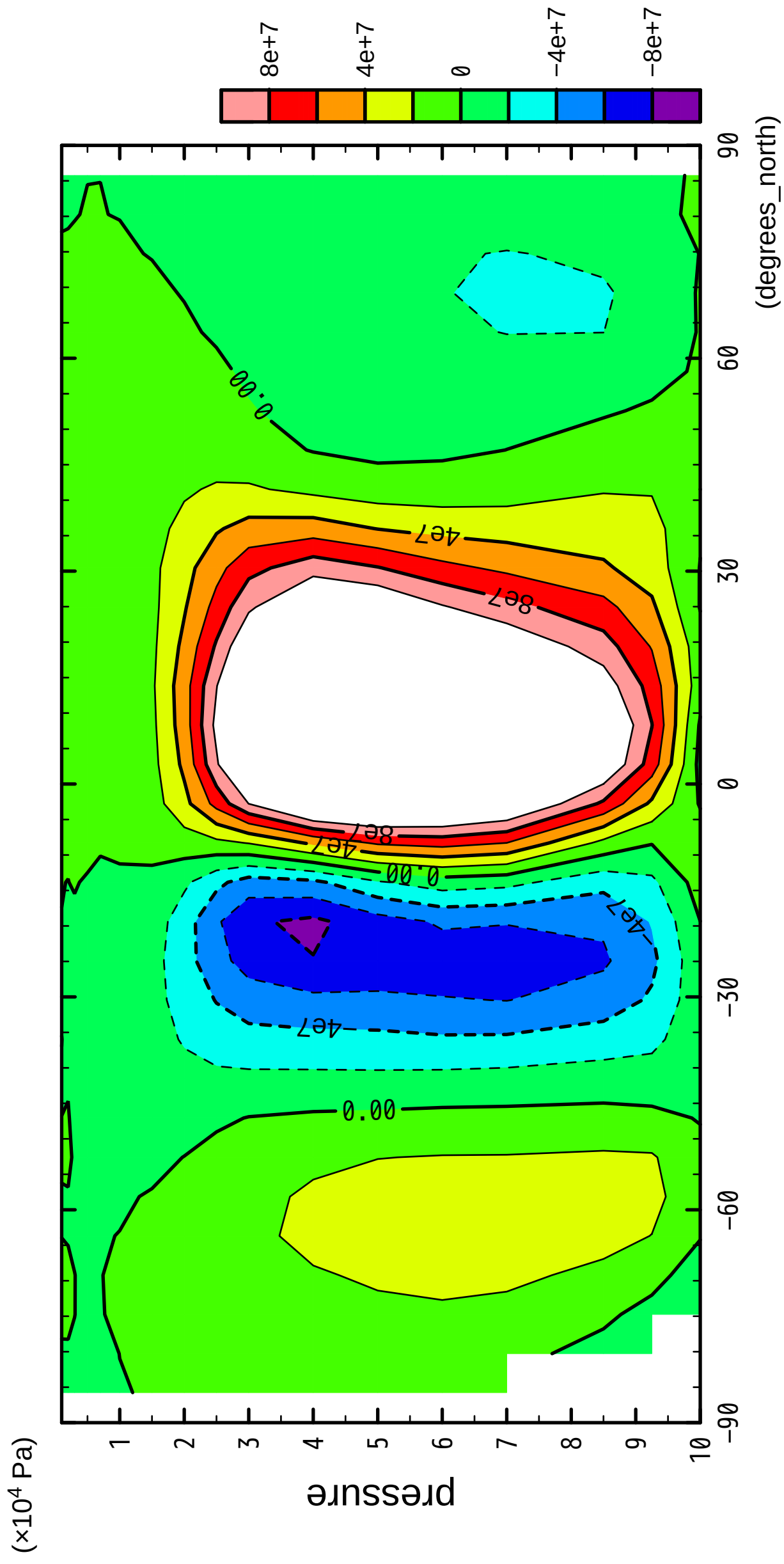


latitude

CONTOUR INTERVAL = 2.000E+07

11/12

MSF

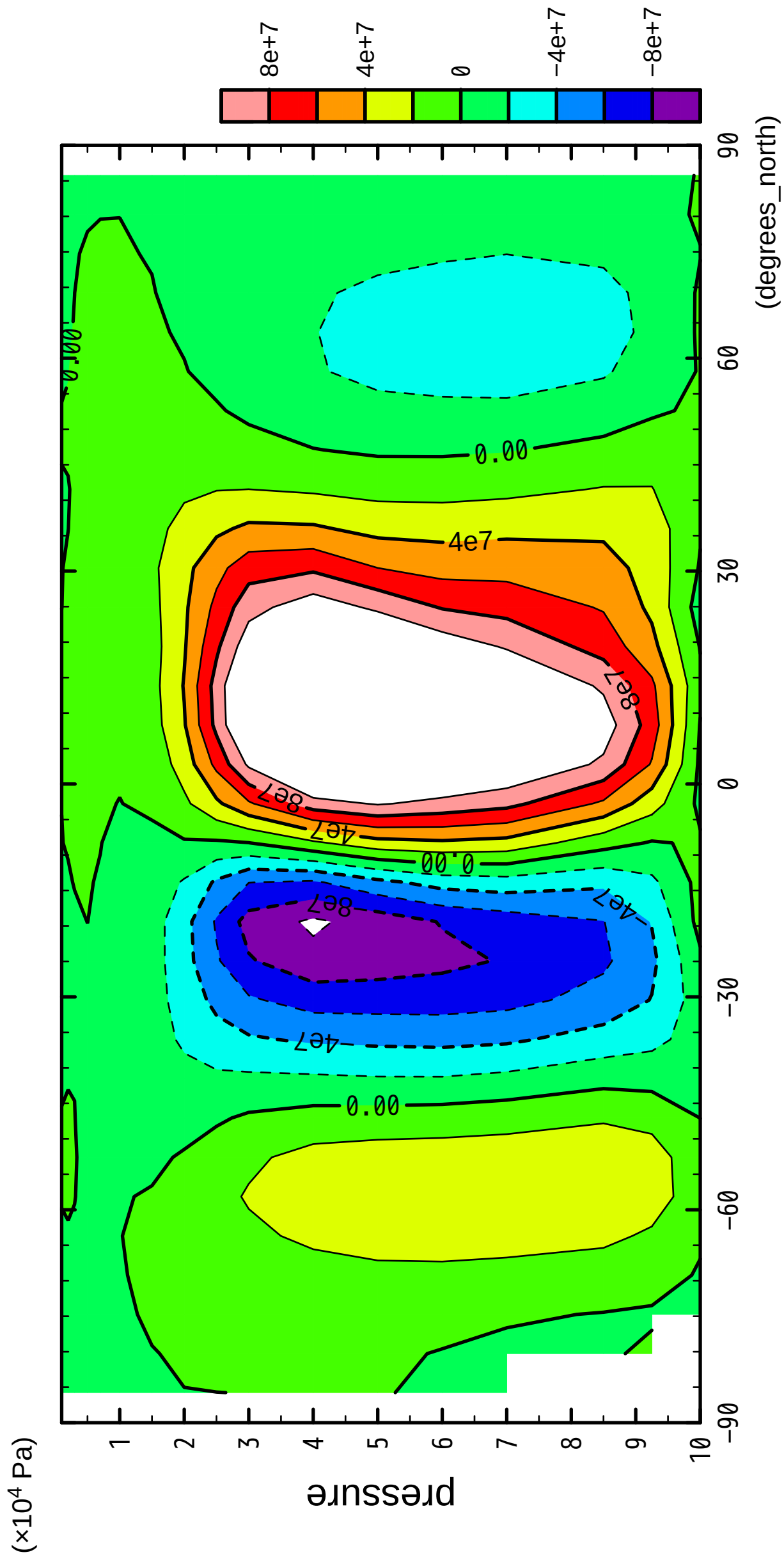


latitude

CONTOUR INTERVAL = 2.000E+07

12/12

MSF



latitude

(degrees\_north)

CONTOUR INTERVAL = 2.000E+07