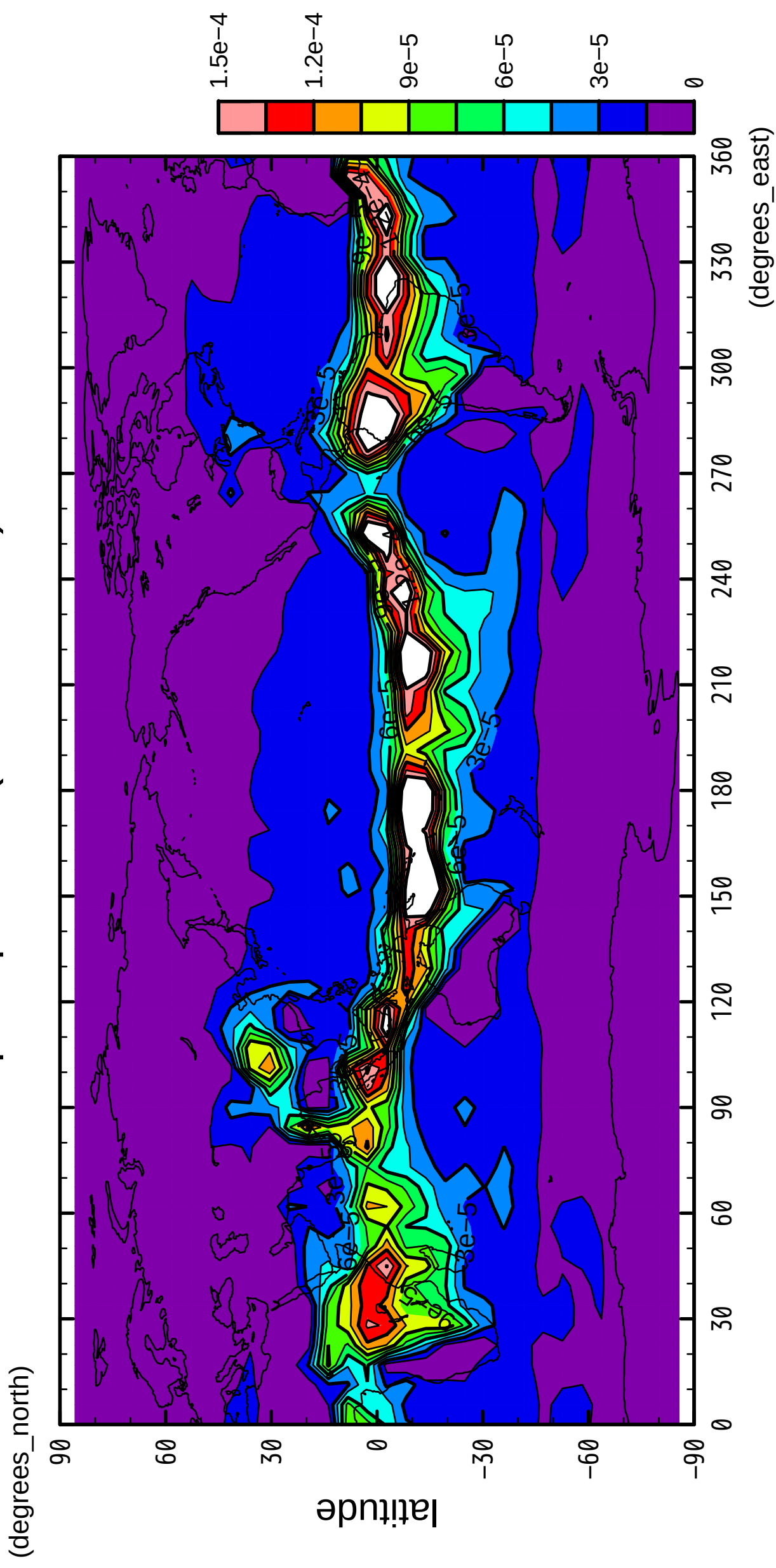


1/12

# precipitation (rain + snow)

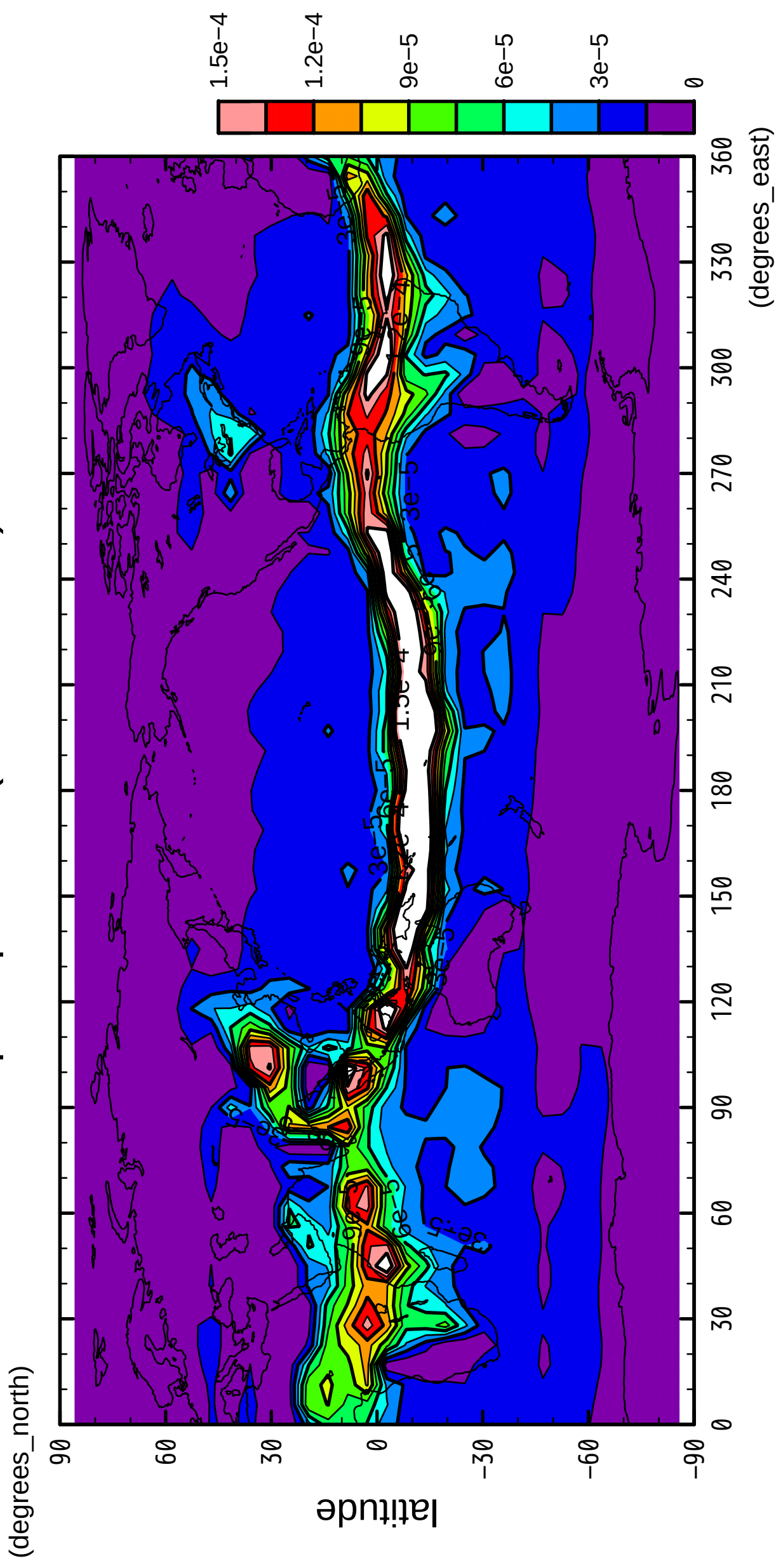


longitude

CONTOUR INTERVAL = 1.500E-05

2/12

# precipitation (rain + snow)

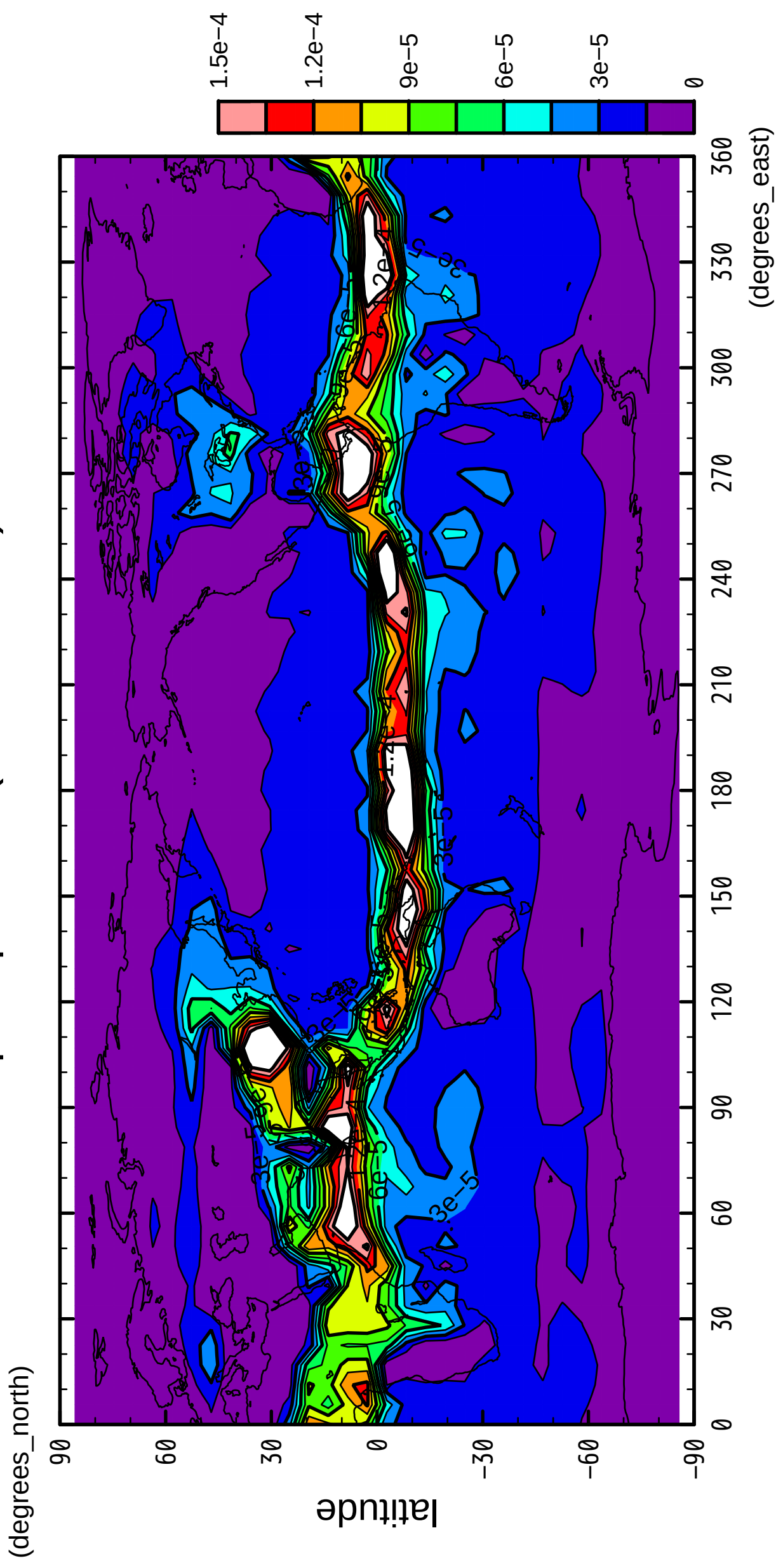


longitude

CONTOUR INTERVAL = 1.500E-05

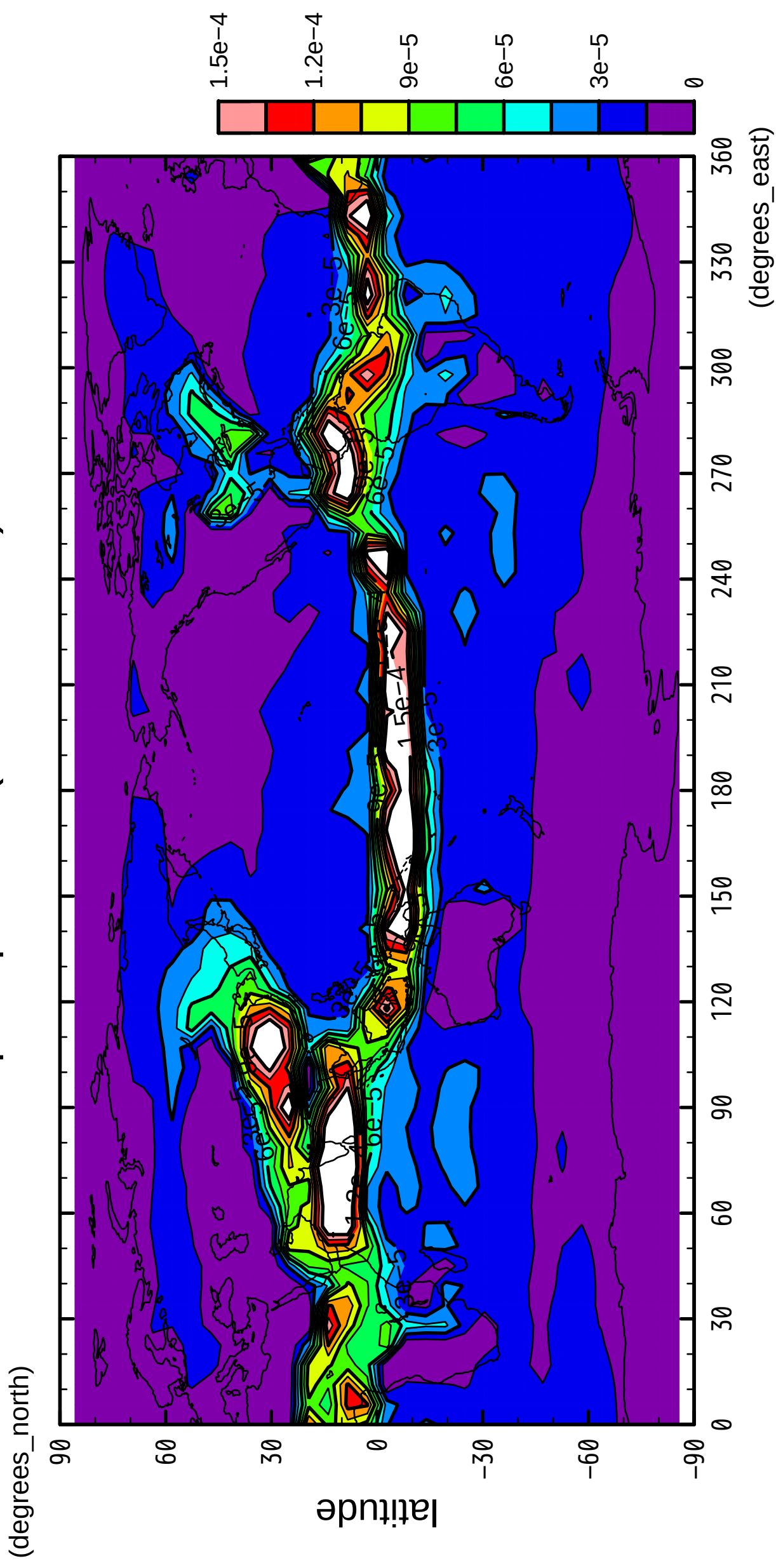
3/12

# precipitation (rain + snow)



4/12

# precipitation (rain + snow)

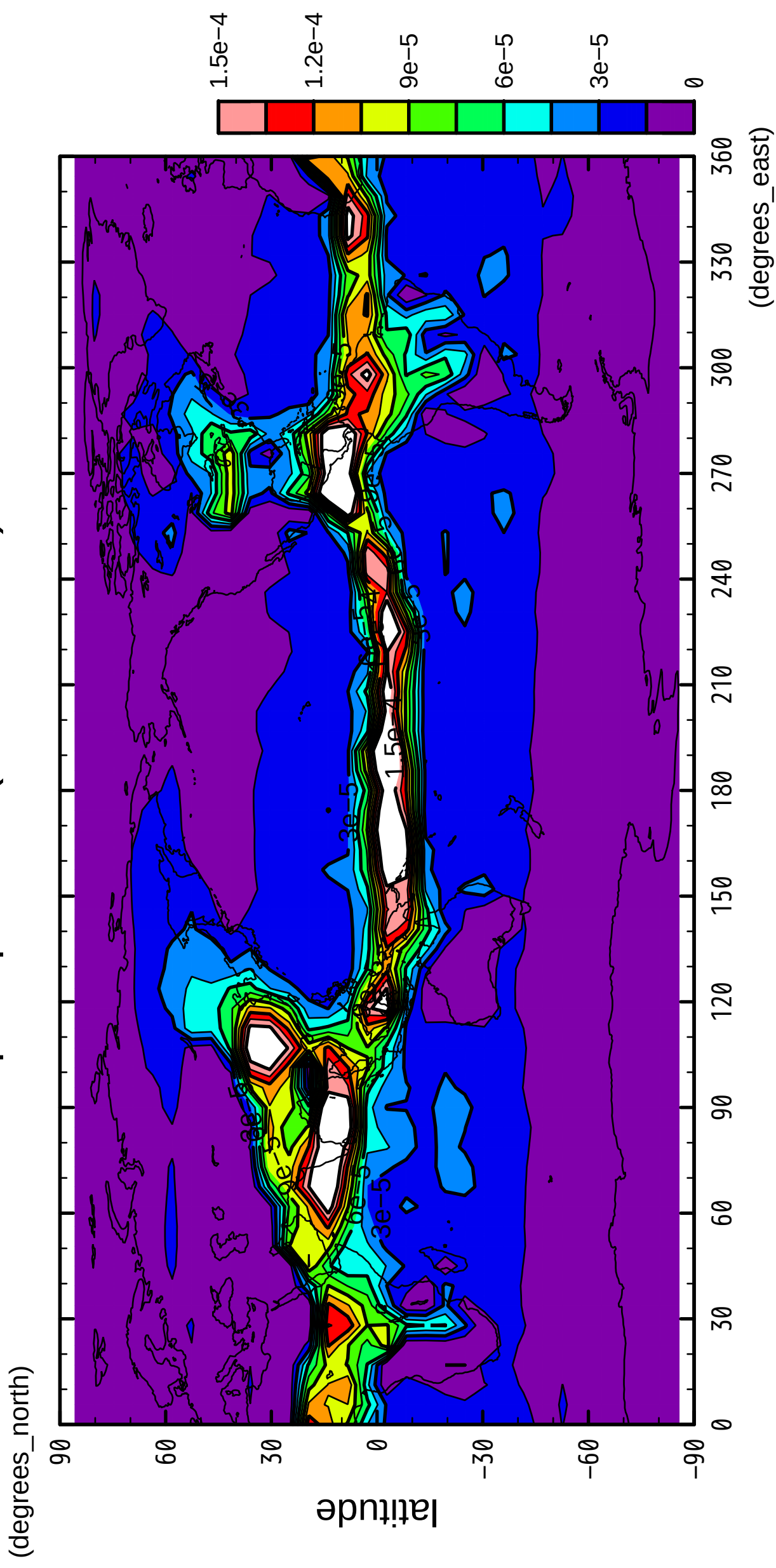


longitude

CONTOUR INTERVAL = 1.500E-05

5/12

# precipitation (rain + snow)

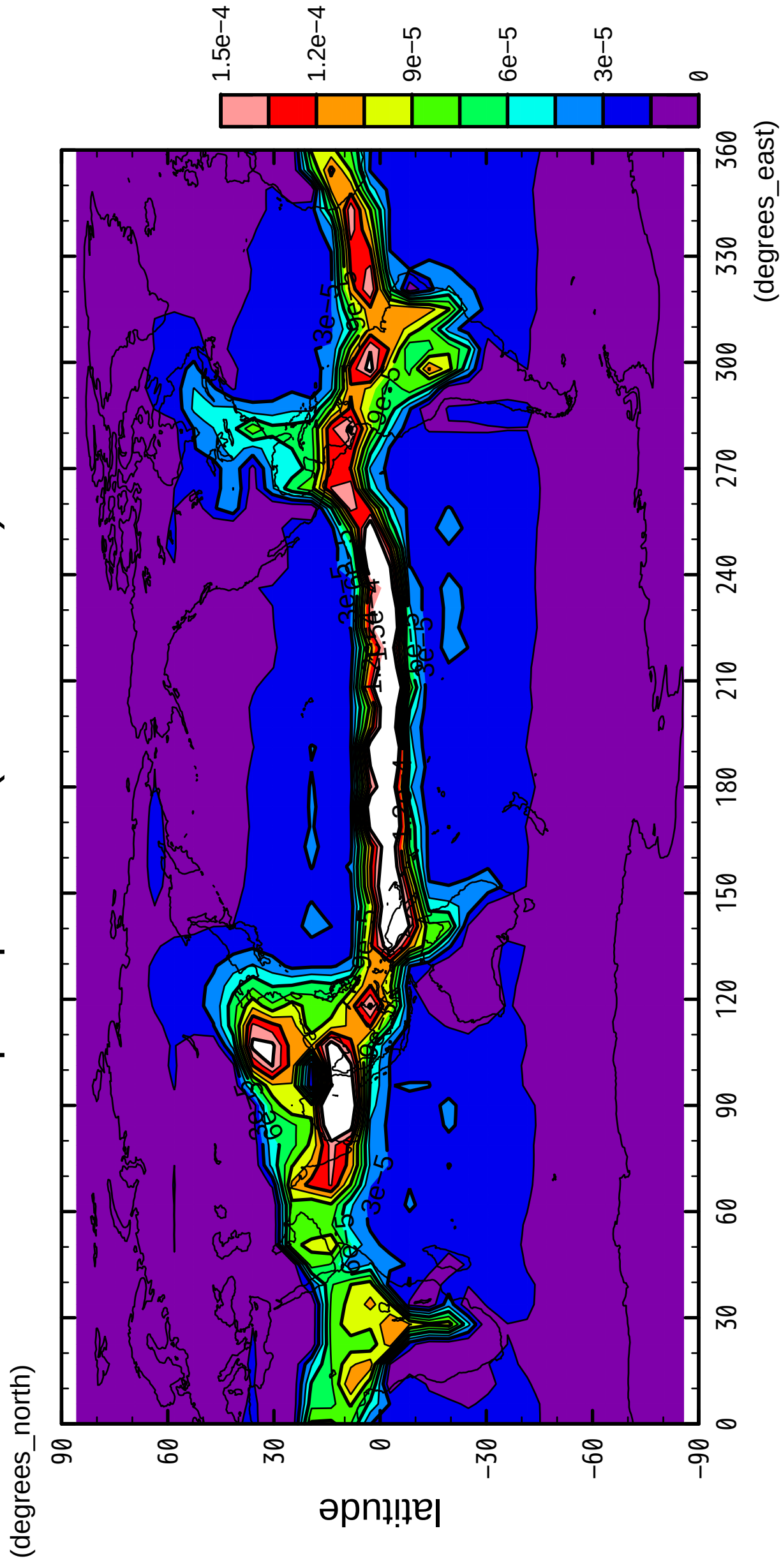


longitude

CONTOUR INTERVAL = 1.500E-05

6/12

precipitation (rain + snow)

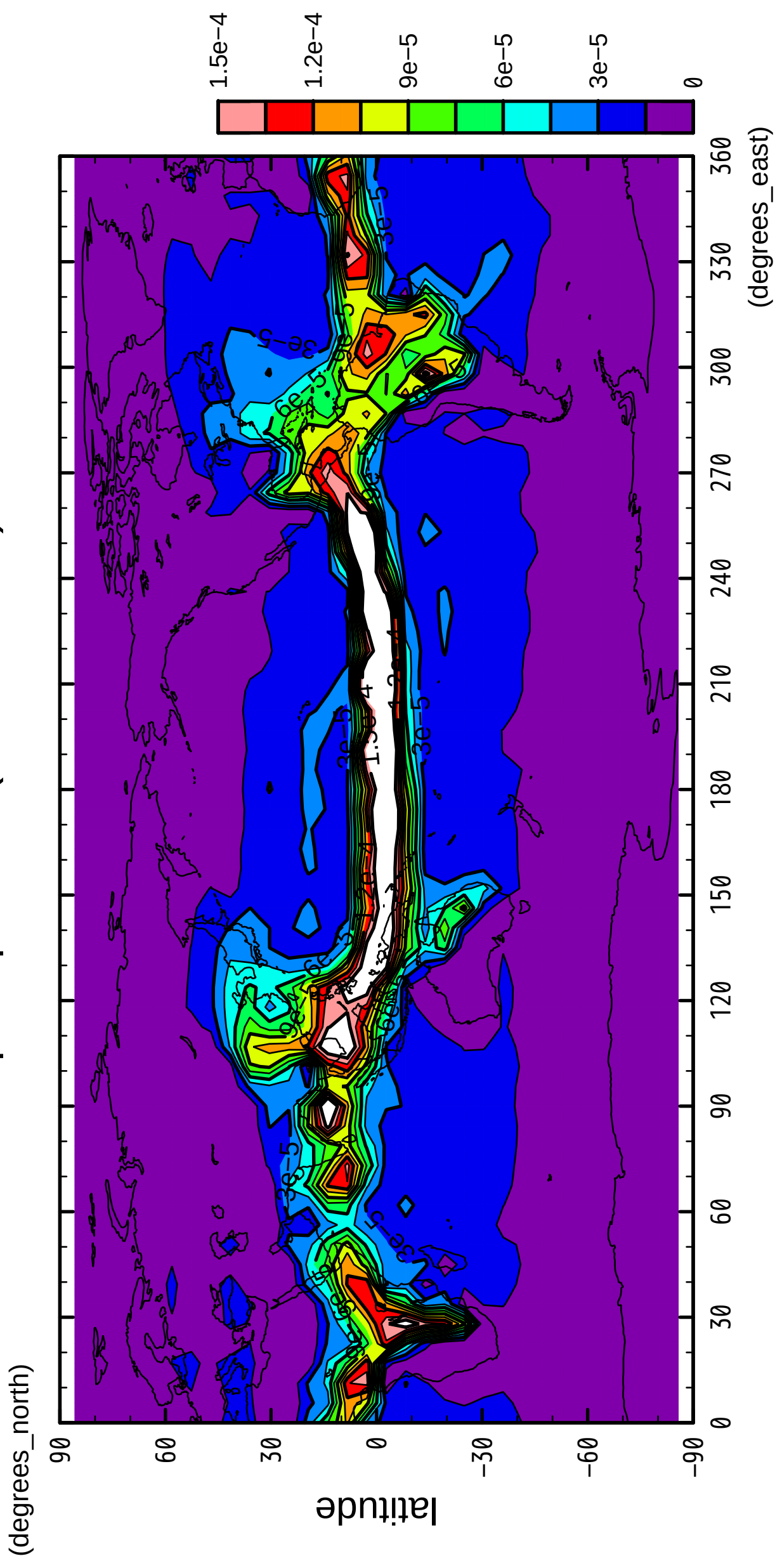


longitude

CONTOUR INTERVAL = 1.500E-05

7/12

# precipitation (rain + snow)

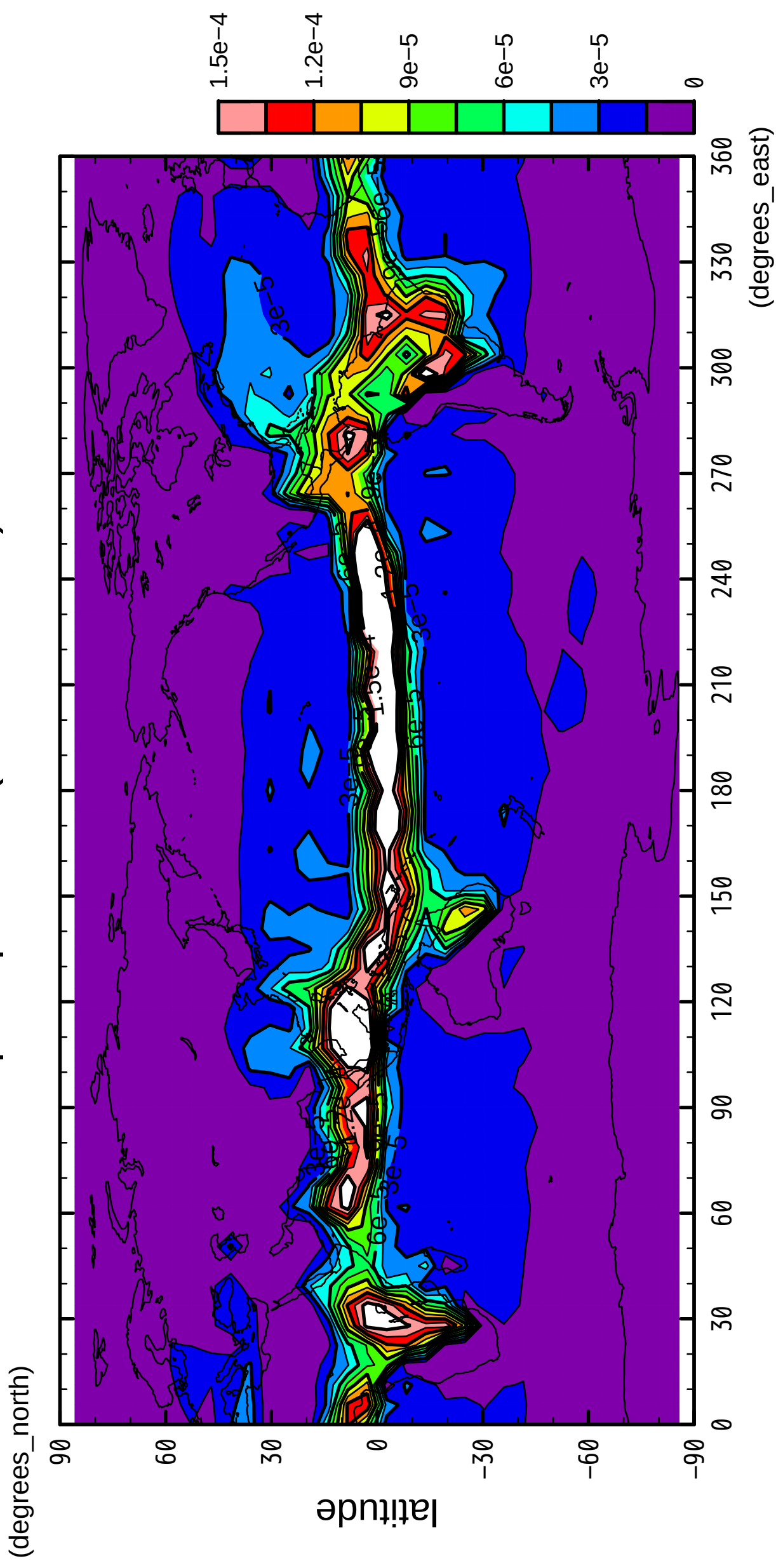


longitude

CONTOUR INTERVAL = 1.500E-05

8/12

# precipitation (rain + snow)



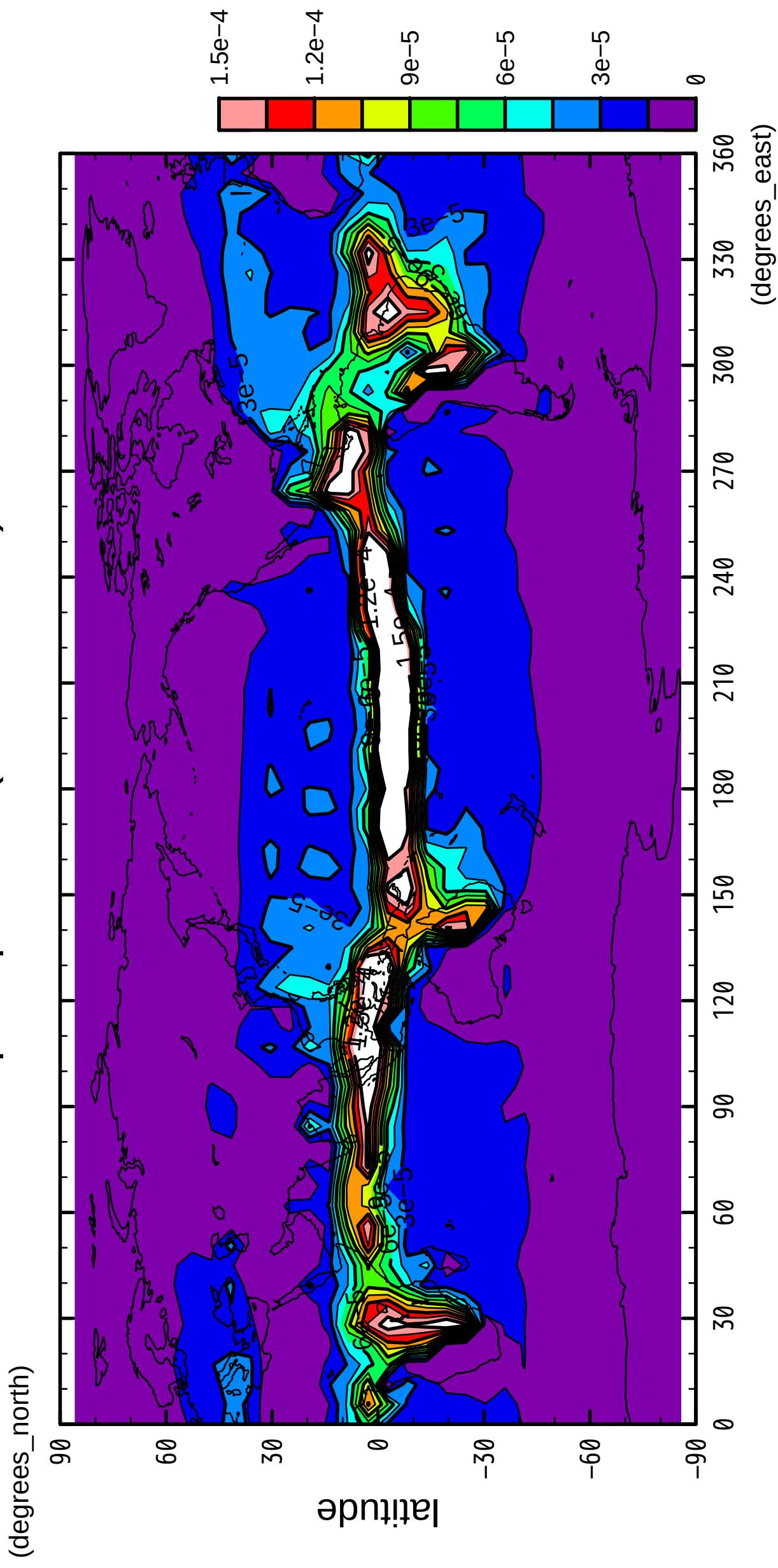
longitude

CONTOUR INTERVAL = 1.500E-05



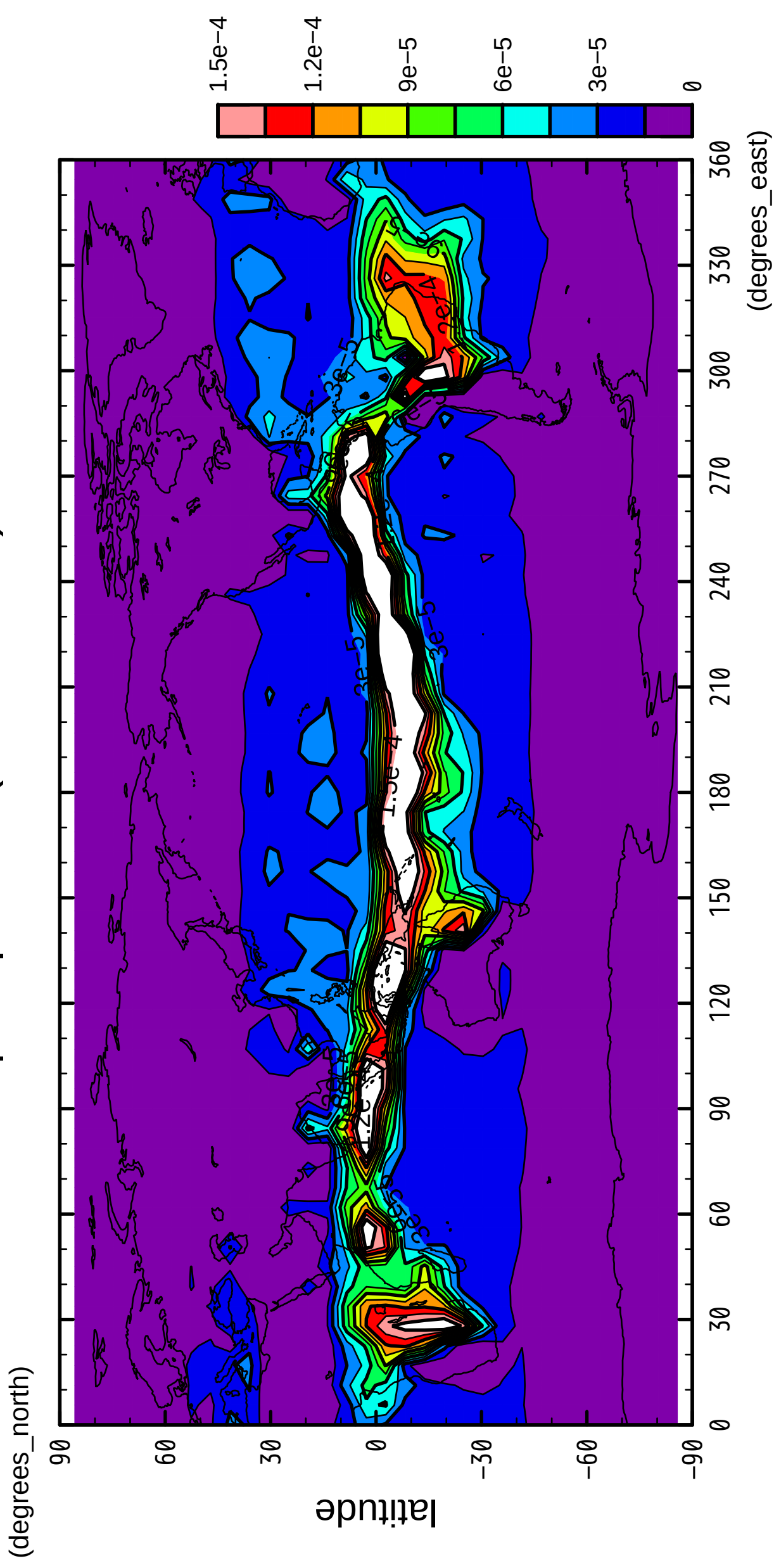
9/12

precipitation (rain + snow)



10/12

precipitation (rain + snow)

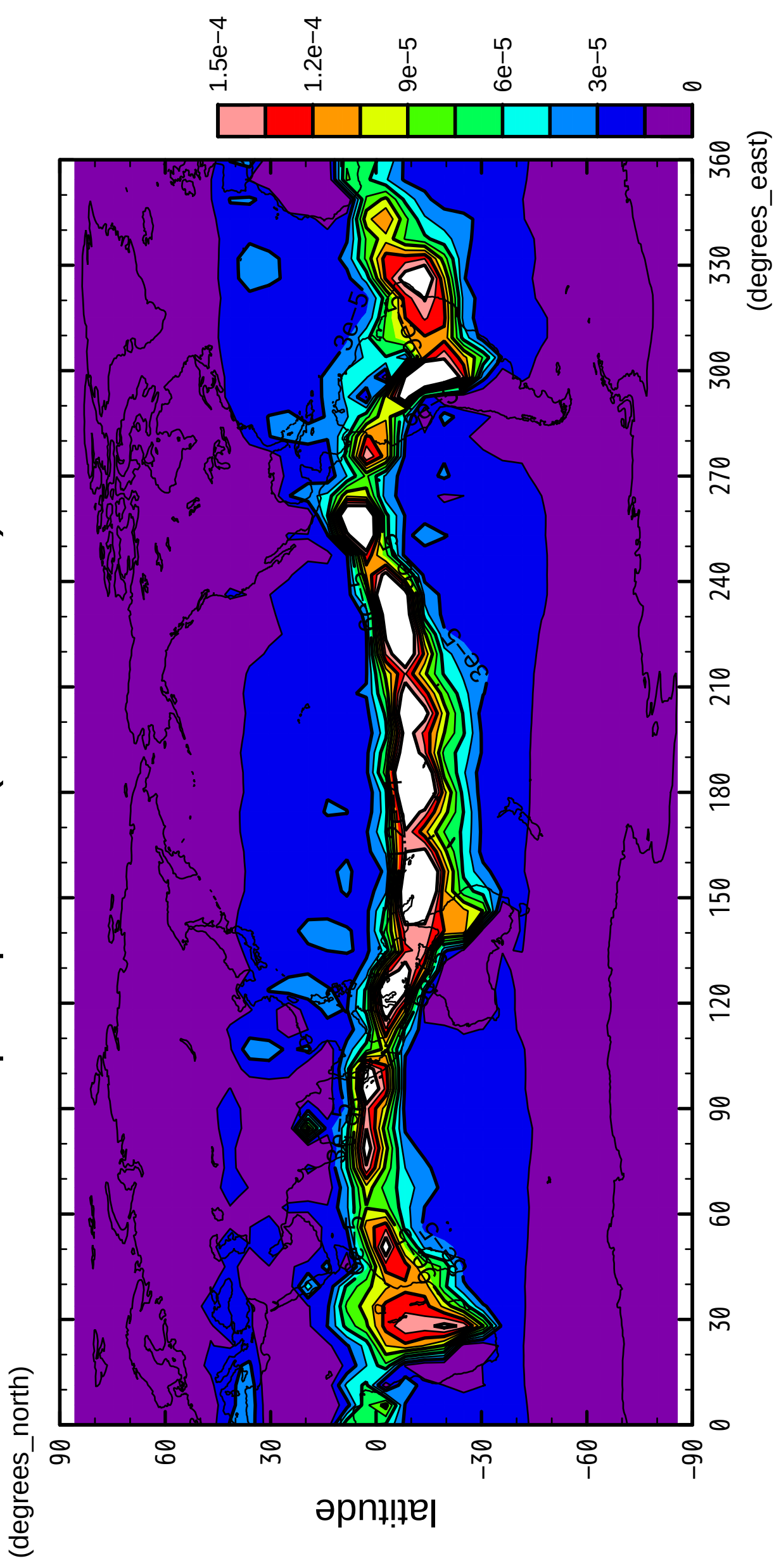


longitude

CONTOUR INTERVAL = 1.500E-05

11/12

precipitation (rain + snow)

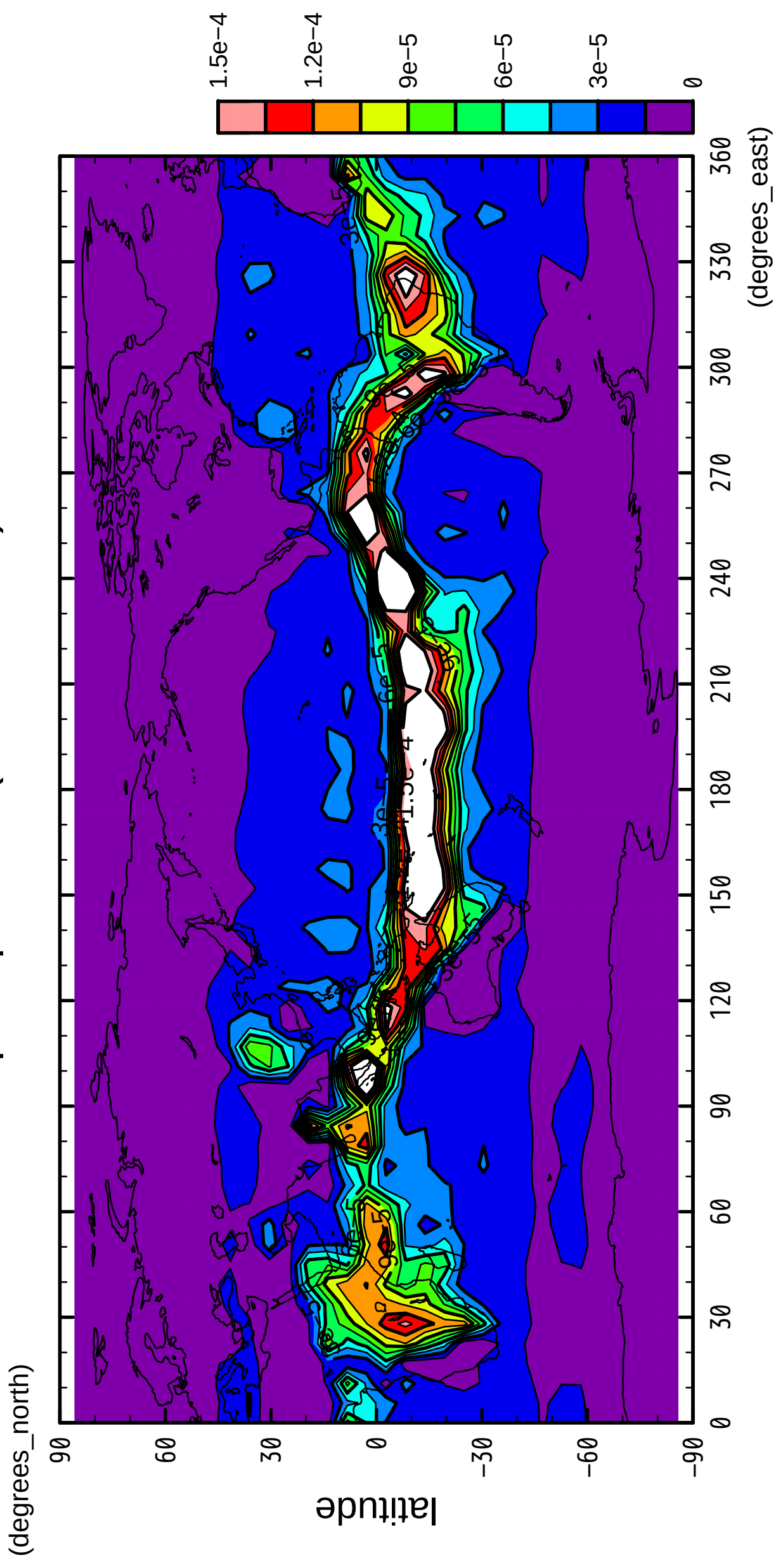


longitude

CONTOUR INTERVAL = 1.500E-05

12/12

precipitation (rain + snow)



longitude

CONTOUR INTERVAL = 1.500E-05