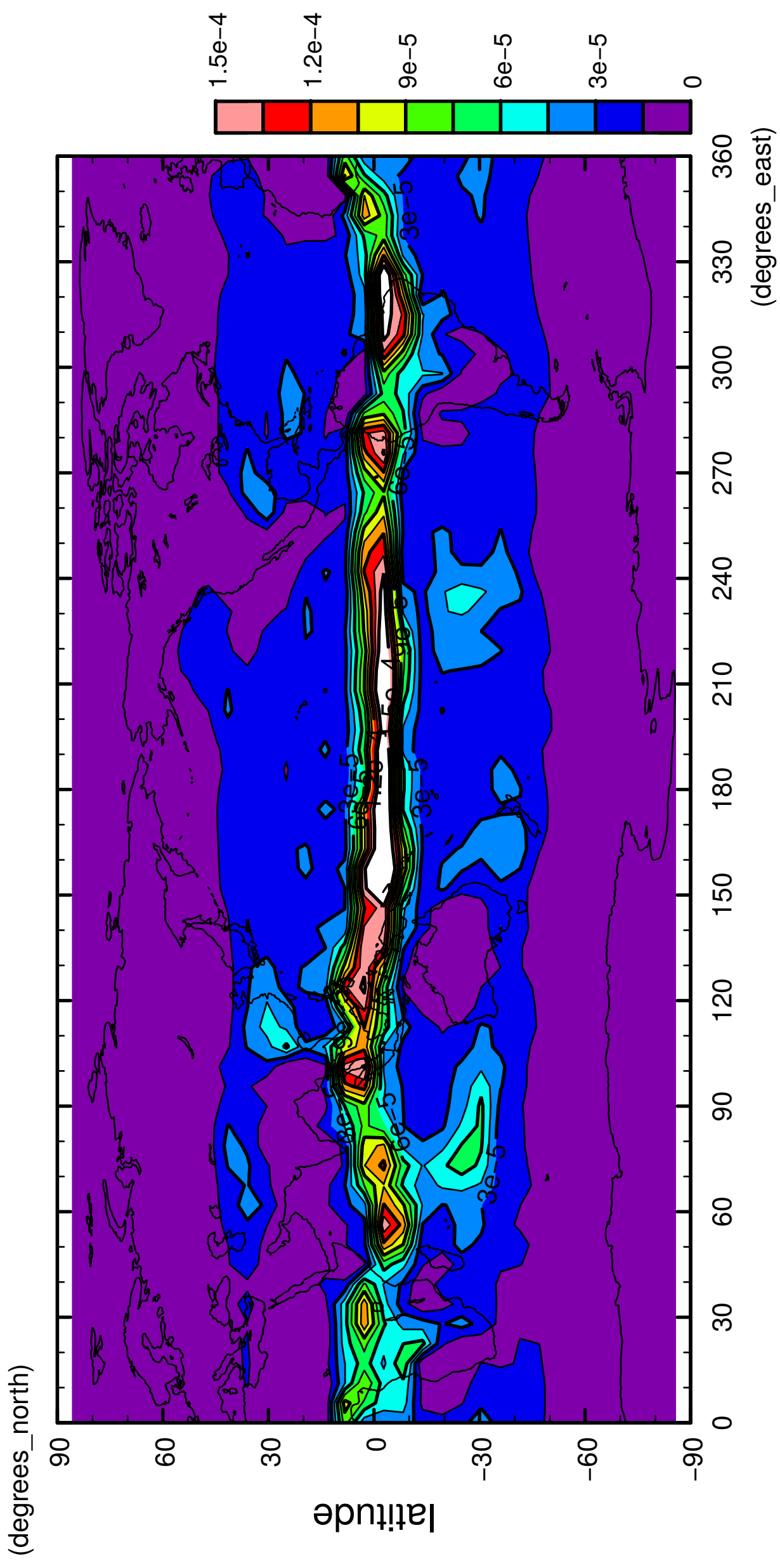


1/12

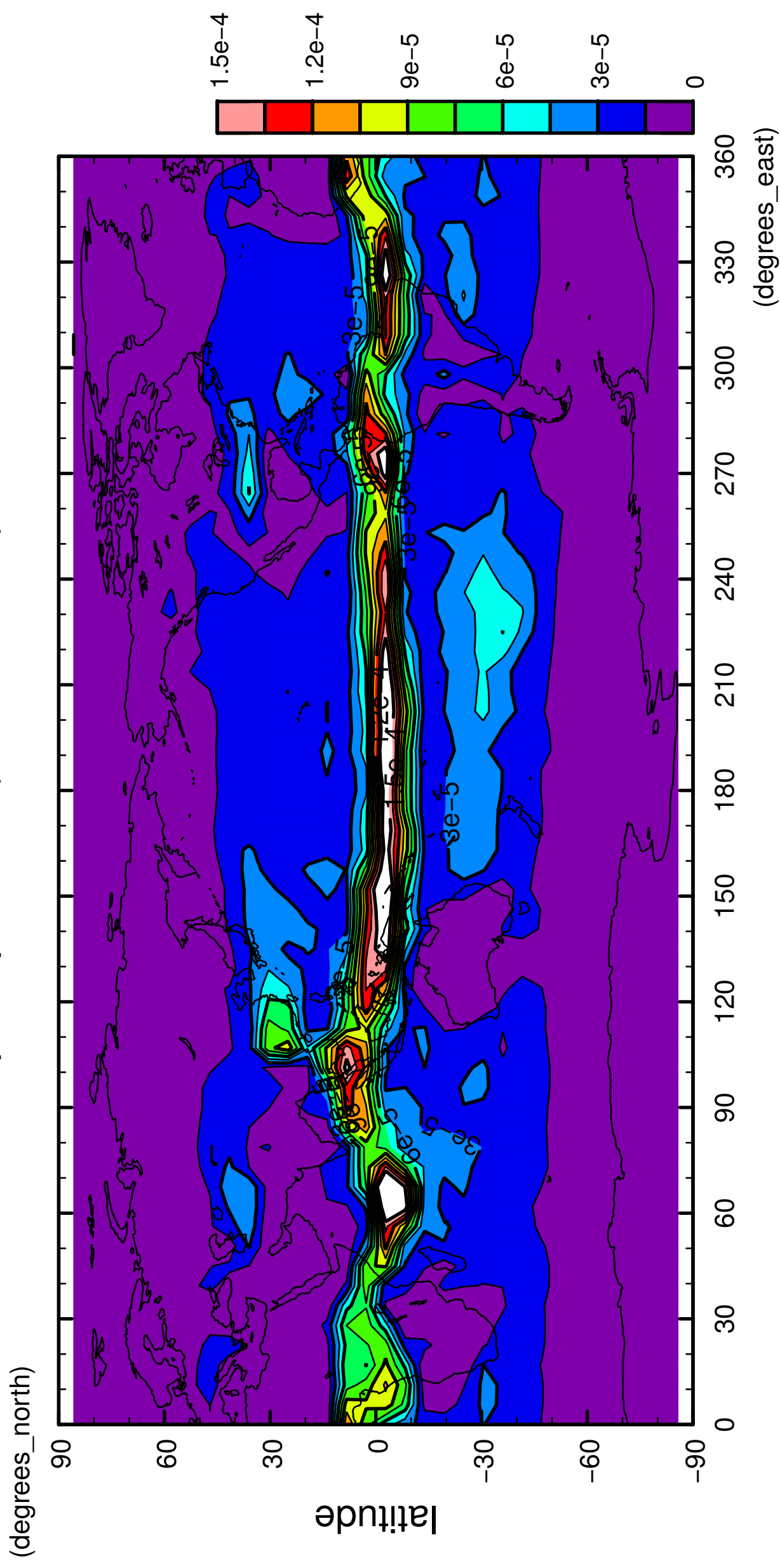
precipitation (rain + snow)



longitude
CONTOUR INTERVAL = 1.500E-05

2/12

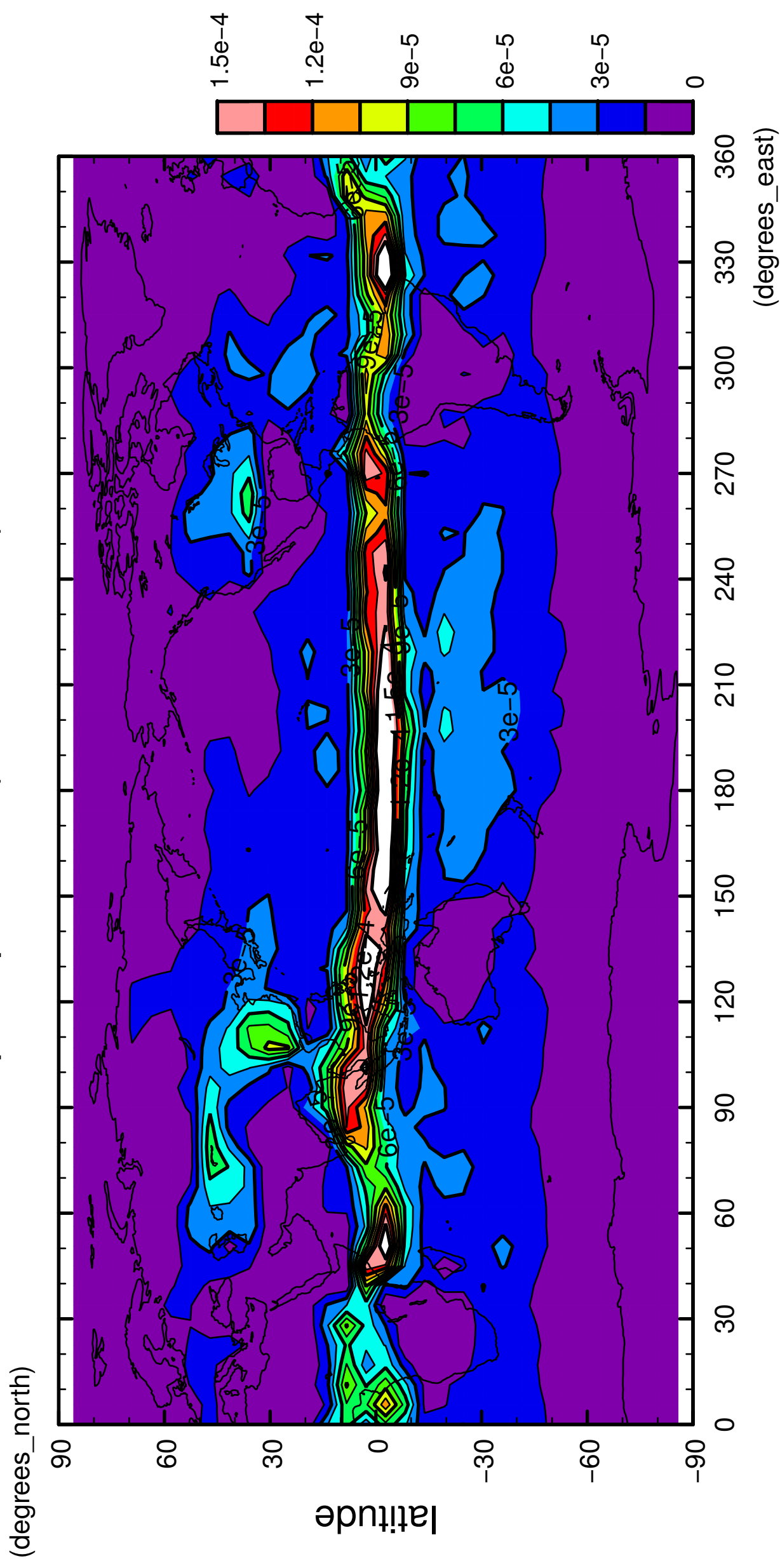
precipitation (rain + snow)



longitude
CONTOUR INTERVAL = 1.500E-05

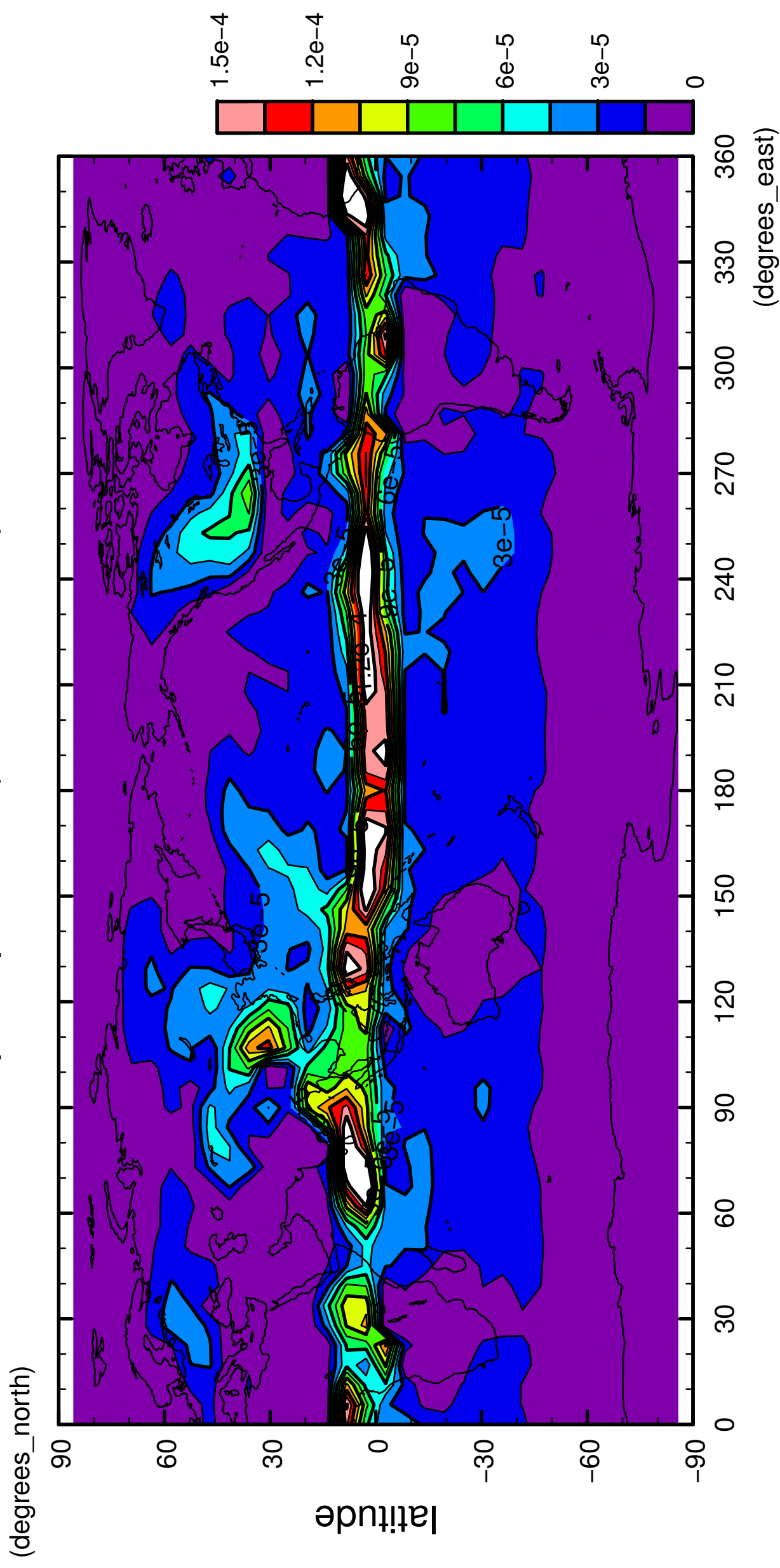
3/12

precipitation (rain + snow)



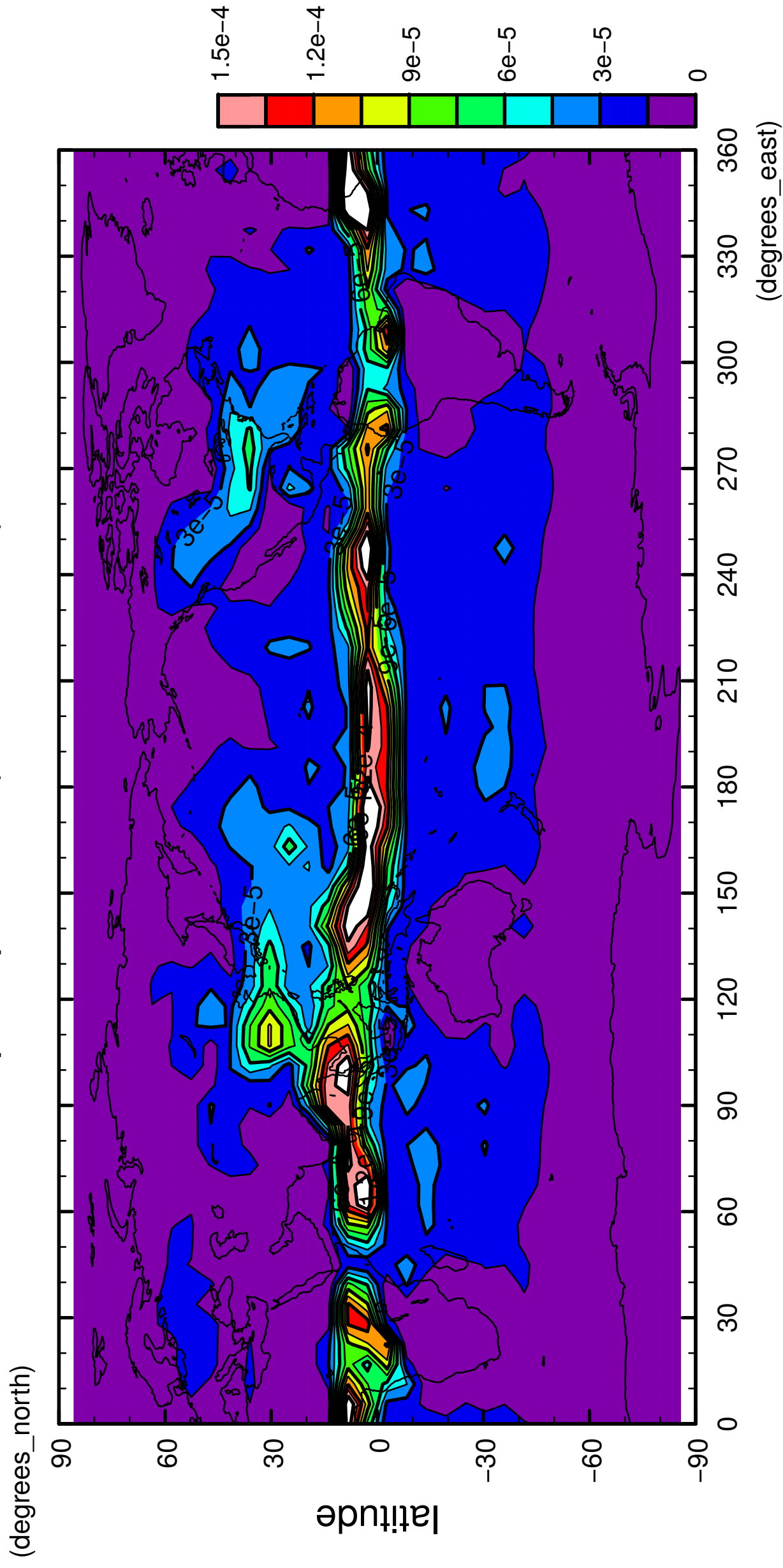
5/12

precipitation (rain + snow)



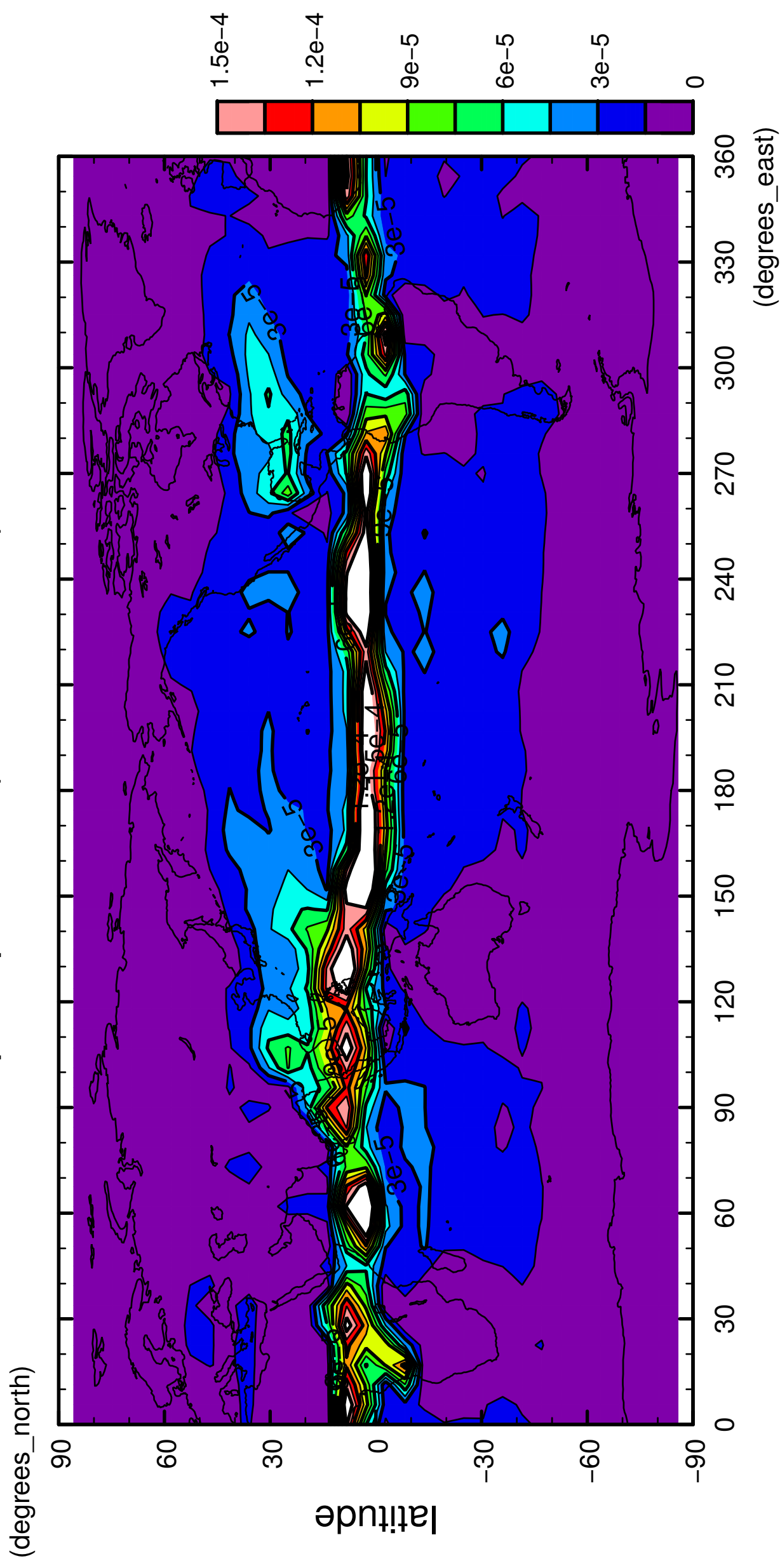
6/12

precipitation (rain + snow)



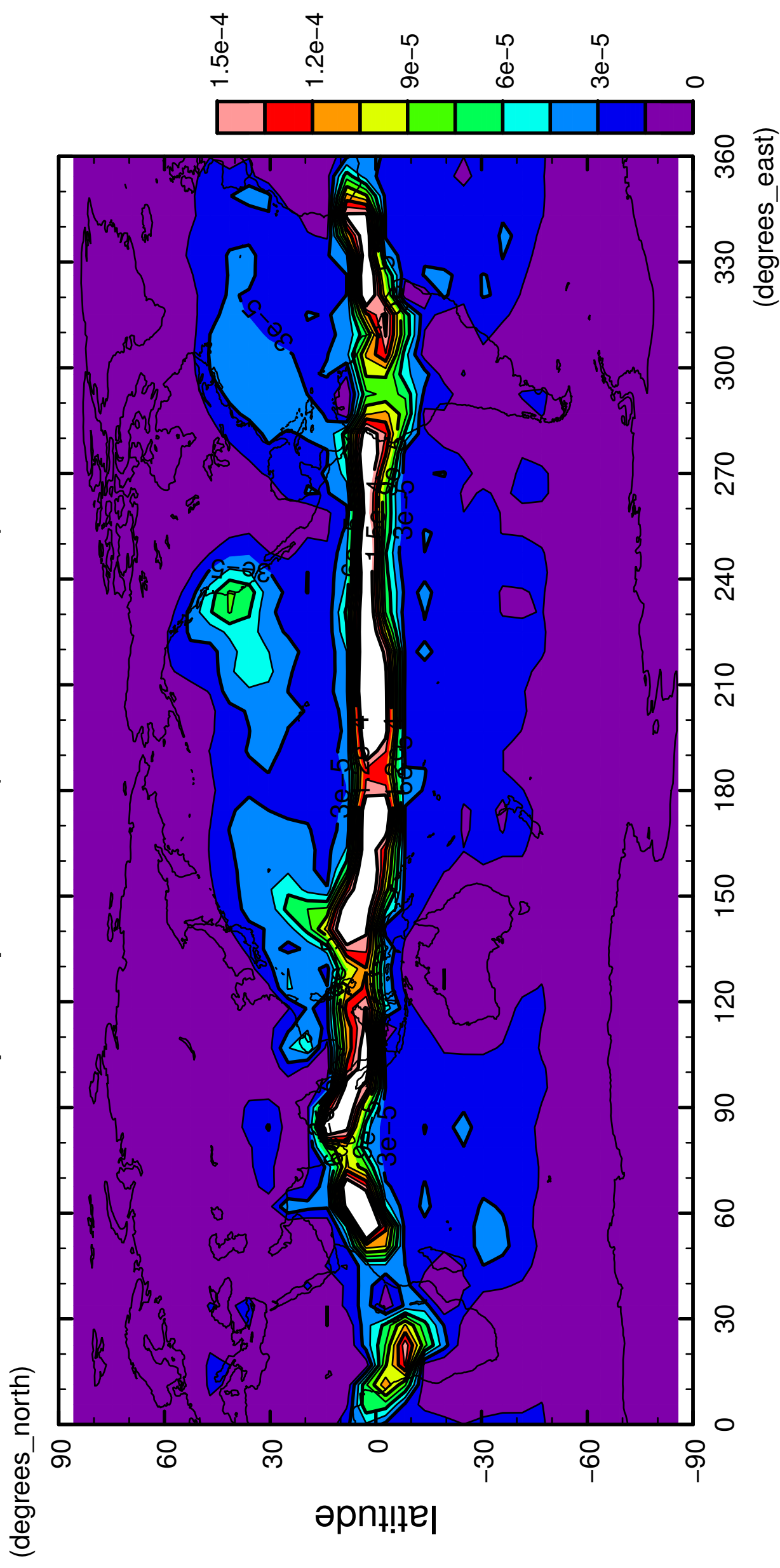
7/12

precipitation (rain + snow)



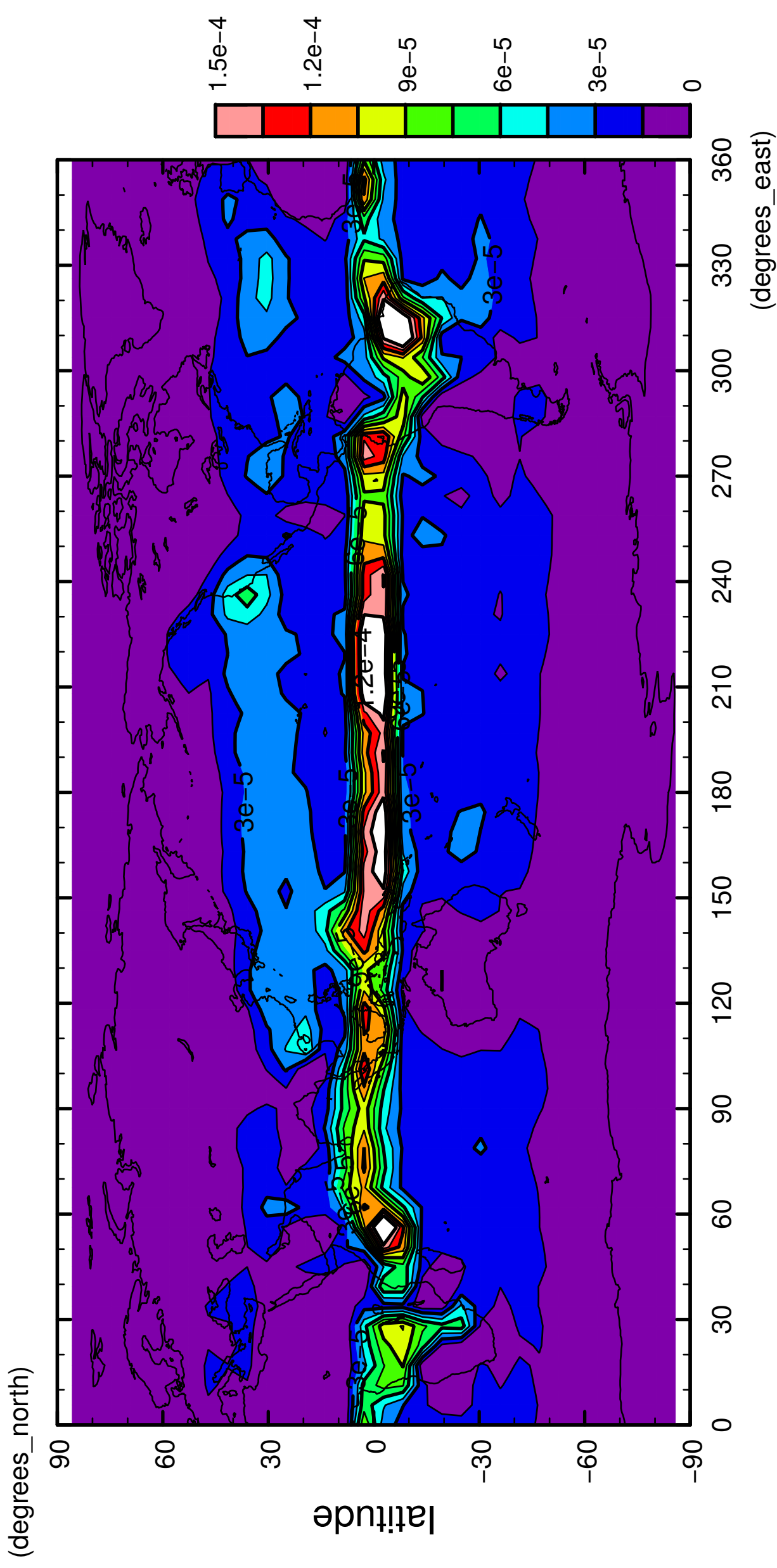
9/12

precipitation (rain + snow)



11/12

precipitation (rain + snow)



12/12

precipitation (rain + snow)

