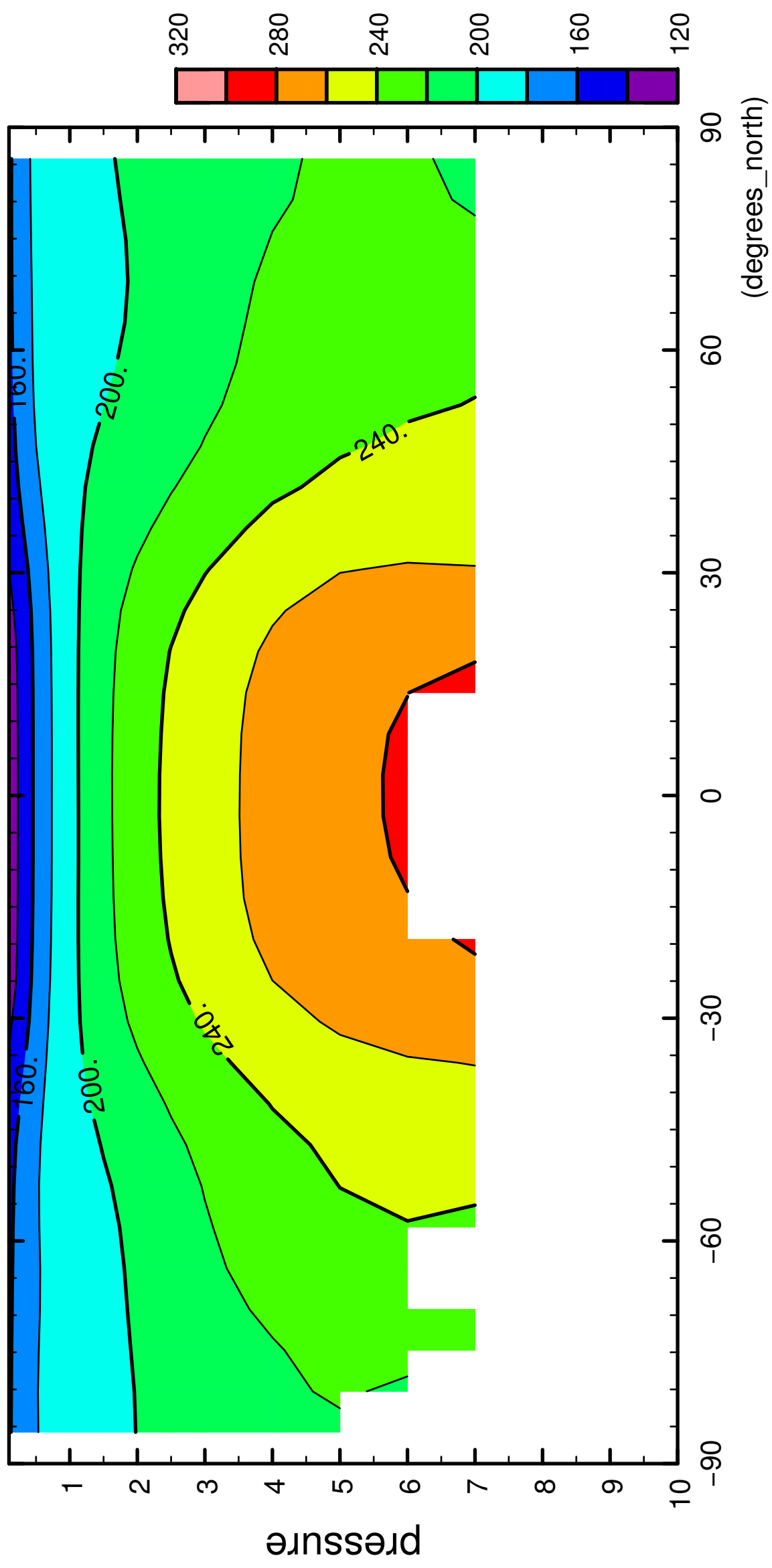


1/12

Temp

($\times 10^4$ Pa)

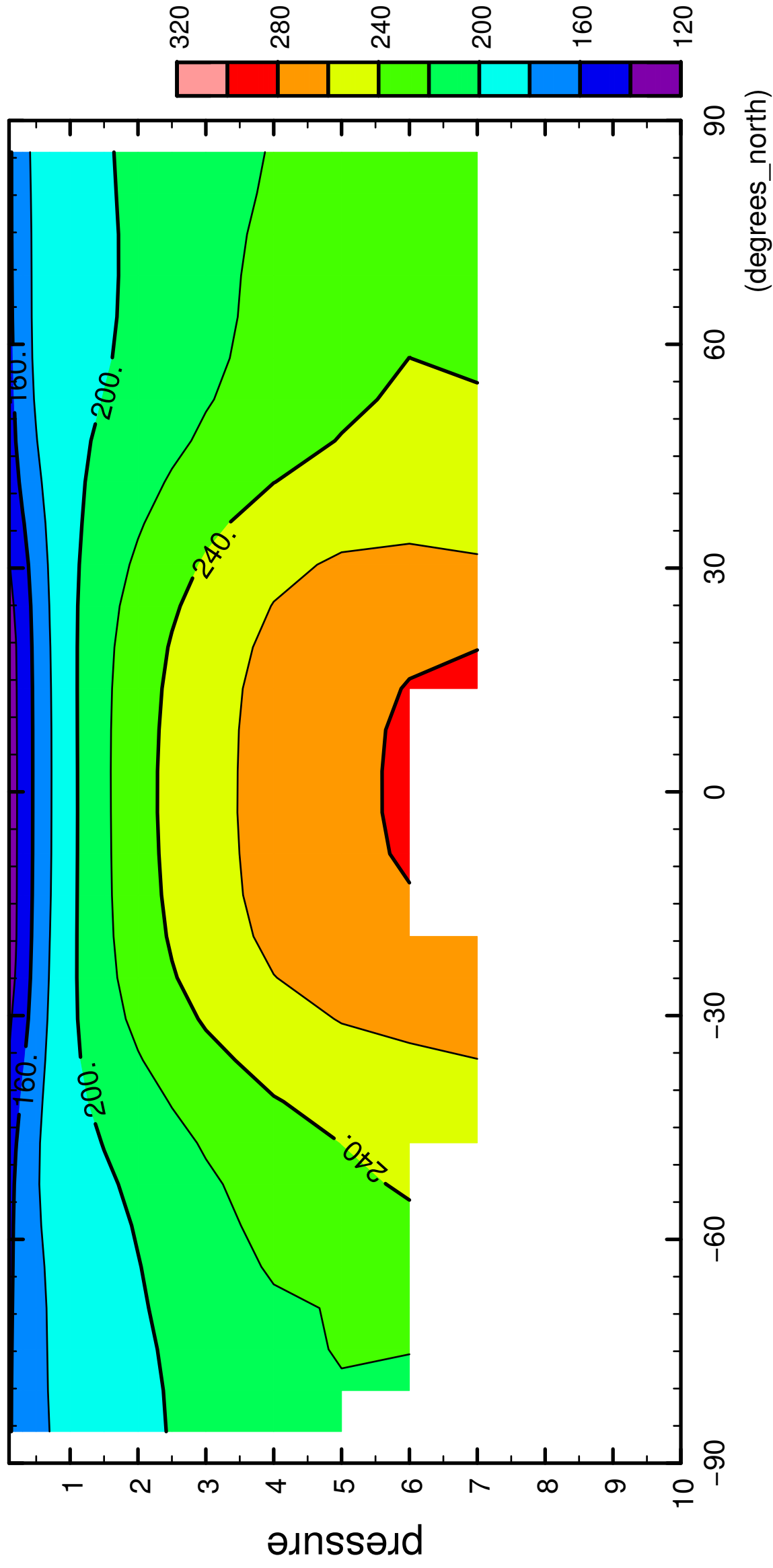


CONTOUR INTERVAL = 2.000E+01

2/12

Temp

($\times 10^4$ Pa)



latitude

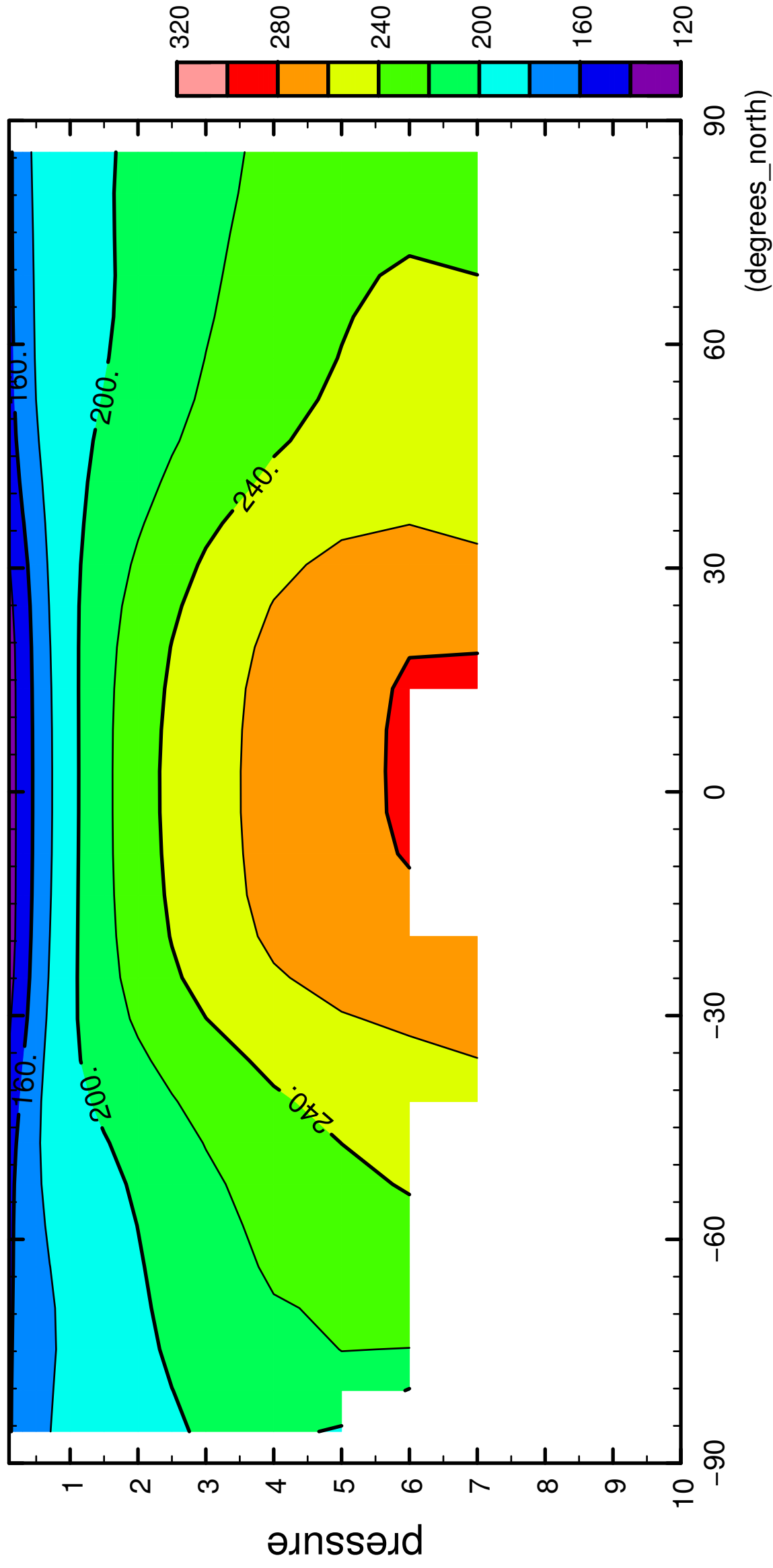
(degrees_north)

CONTOUR INTERVAL = 2.000E+01

3/12

Temp

($\times 10^4$ Pa)

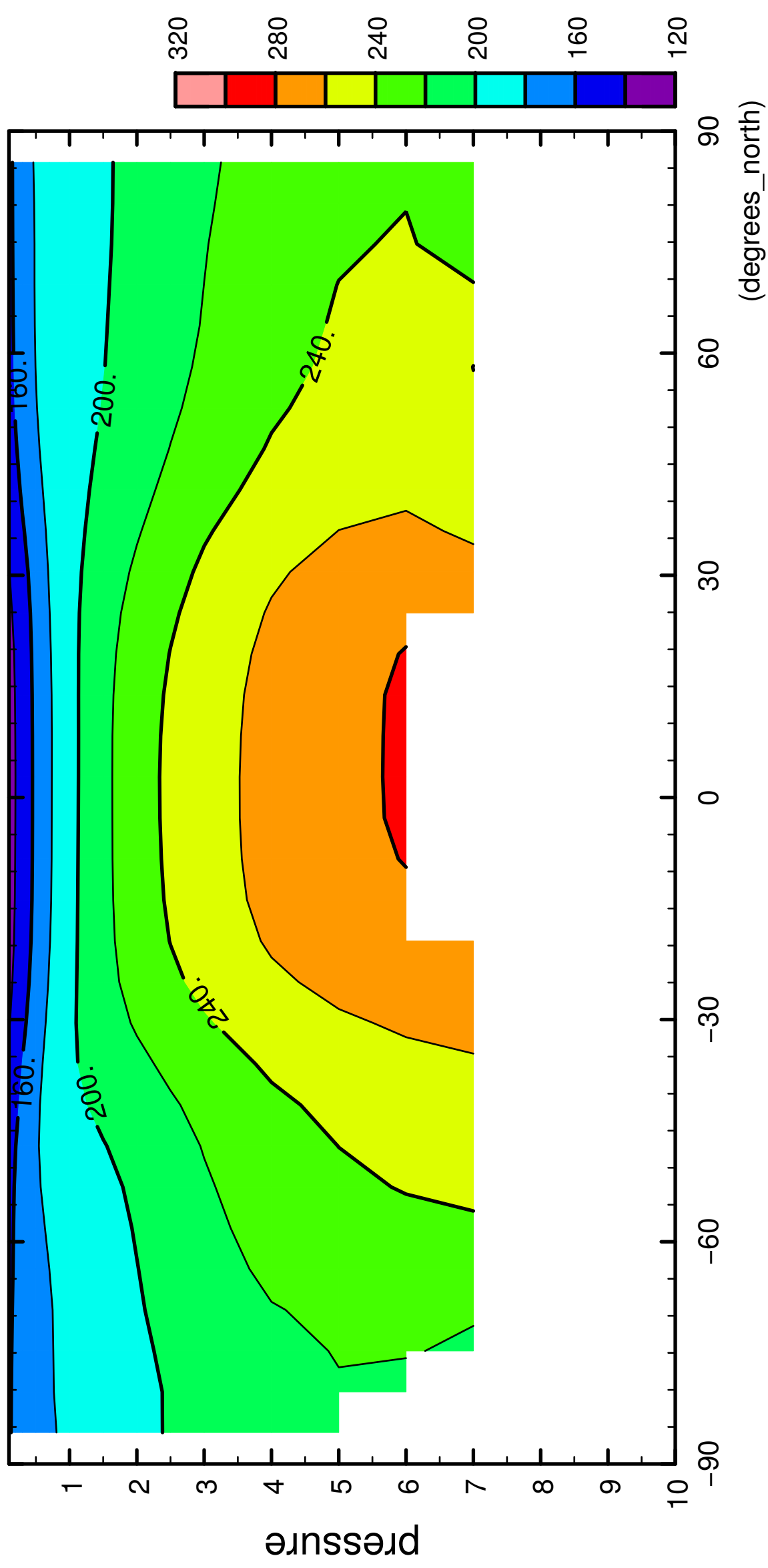


CONTOUR INTERVAL = 2.000E+01

4/12

Temp

($\times 10^4$ Pa)

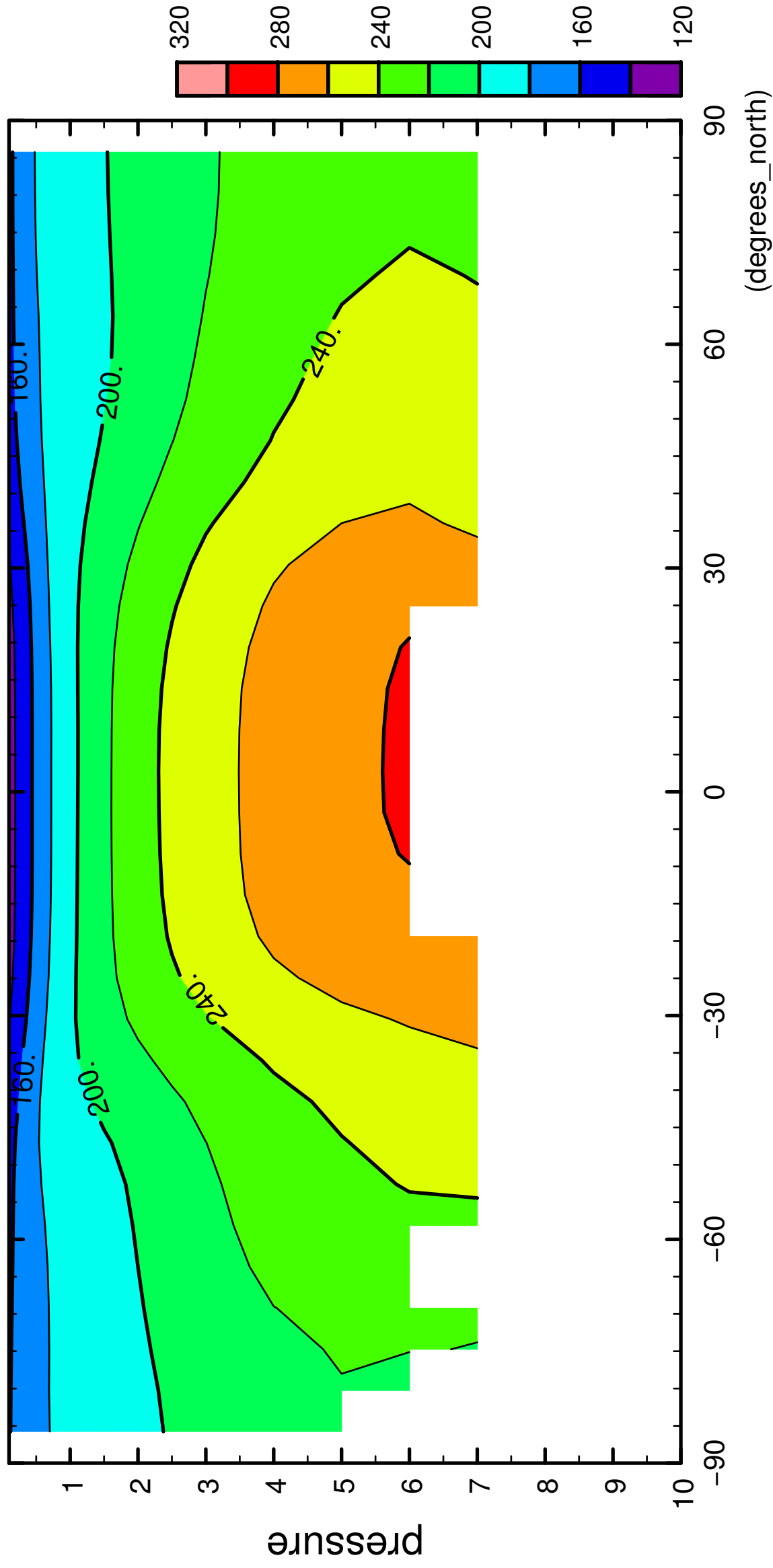


CONTOUR INTERVAL = 2.000E+01

5/12

Temp

($\times 10^4$ Pa)



latitude

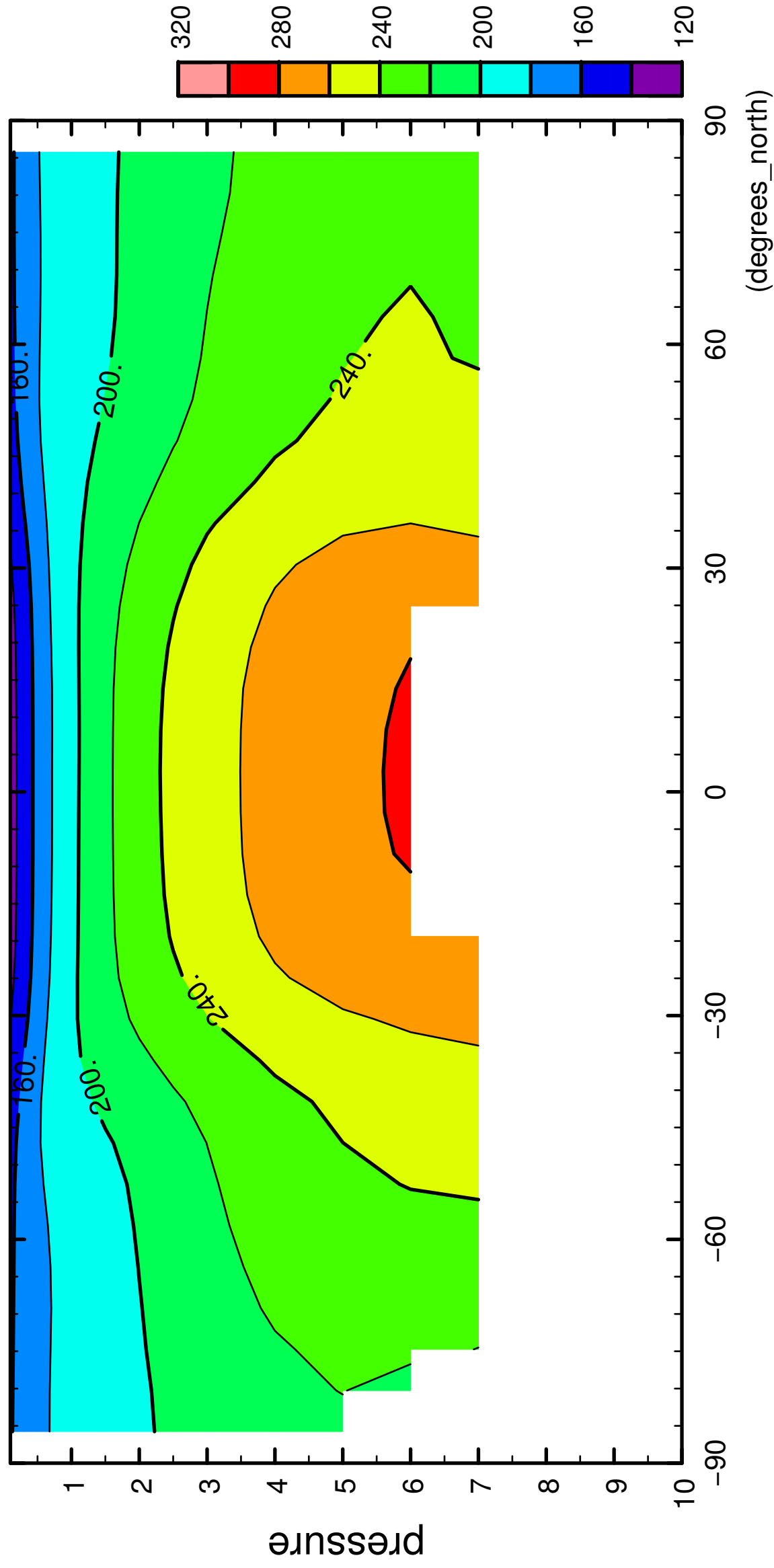
(degrees_north)

CONTOUR INTERVAL = 2.000E+01

6/12

Temp

($\times 10^4$ Pa)

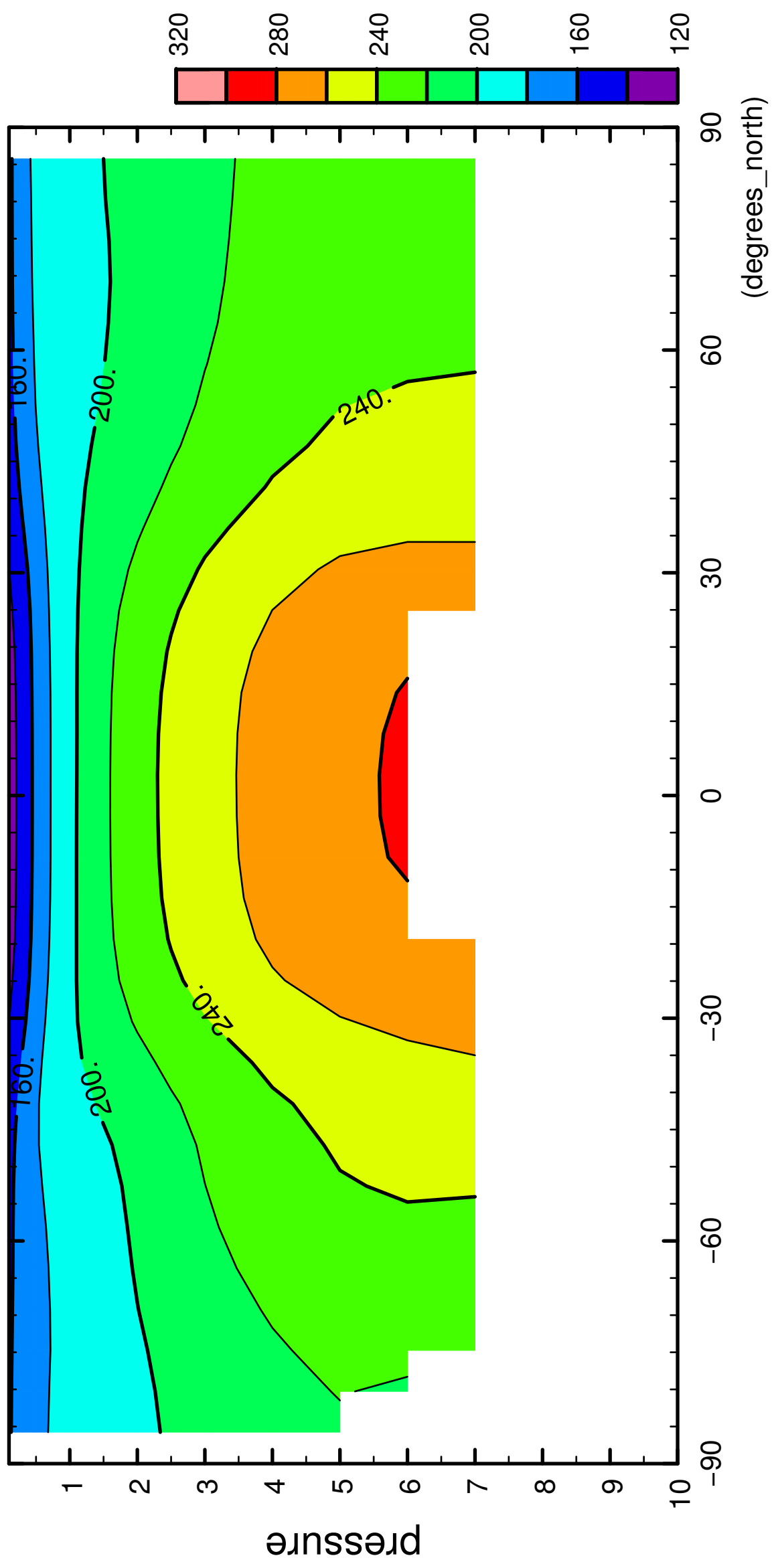


CONTOUR INTERVAL = 2.000E+01

7/12

Temp

($\times 10^4$ Pa)



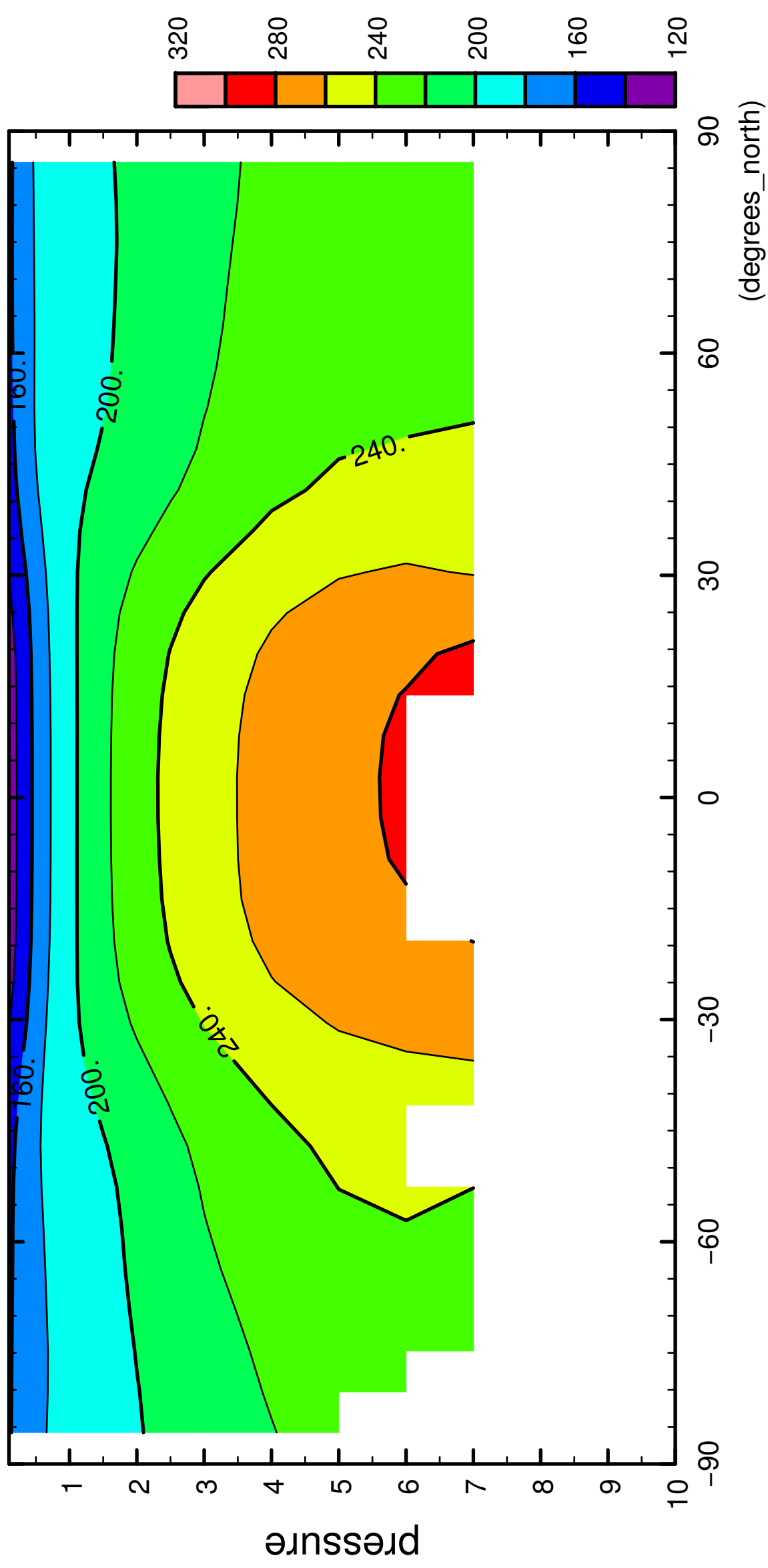
latitude

CONTOUR INTERVAL = 2.000E+01

8/12

Temp

($\times 10^4$ Pa)



latitude

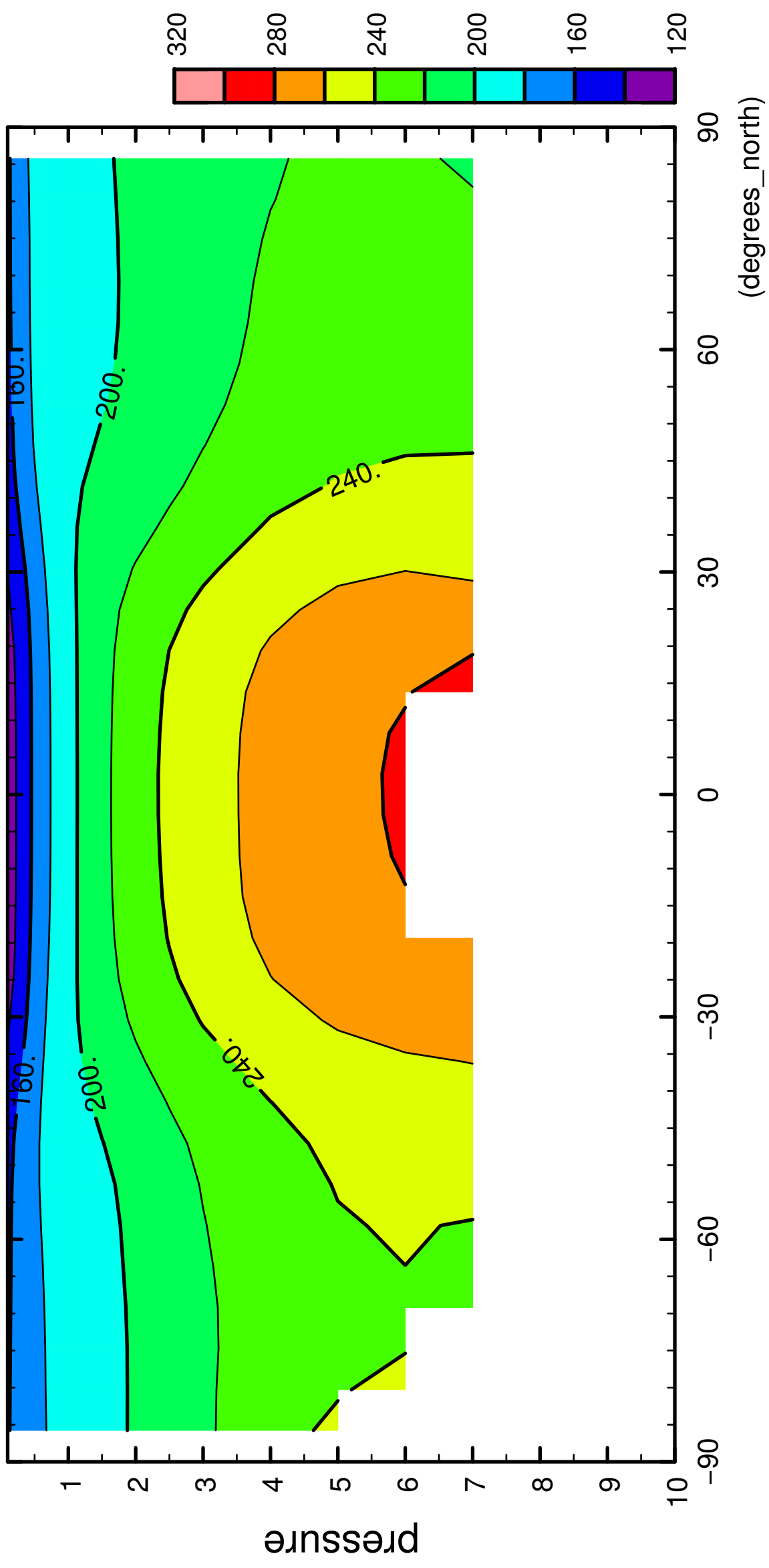
(degrees_north)

CONTOUR INTERVAL = 2.000E+01

9/12

Temp

($\times 10^4$ Pa)



latitude

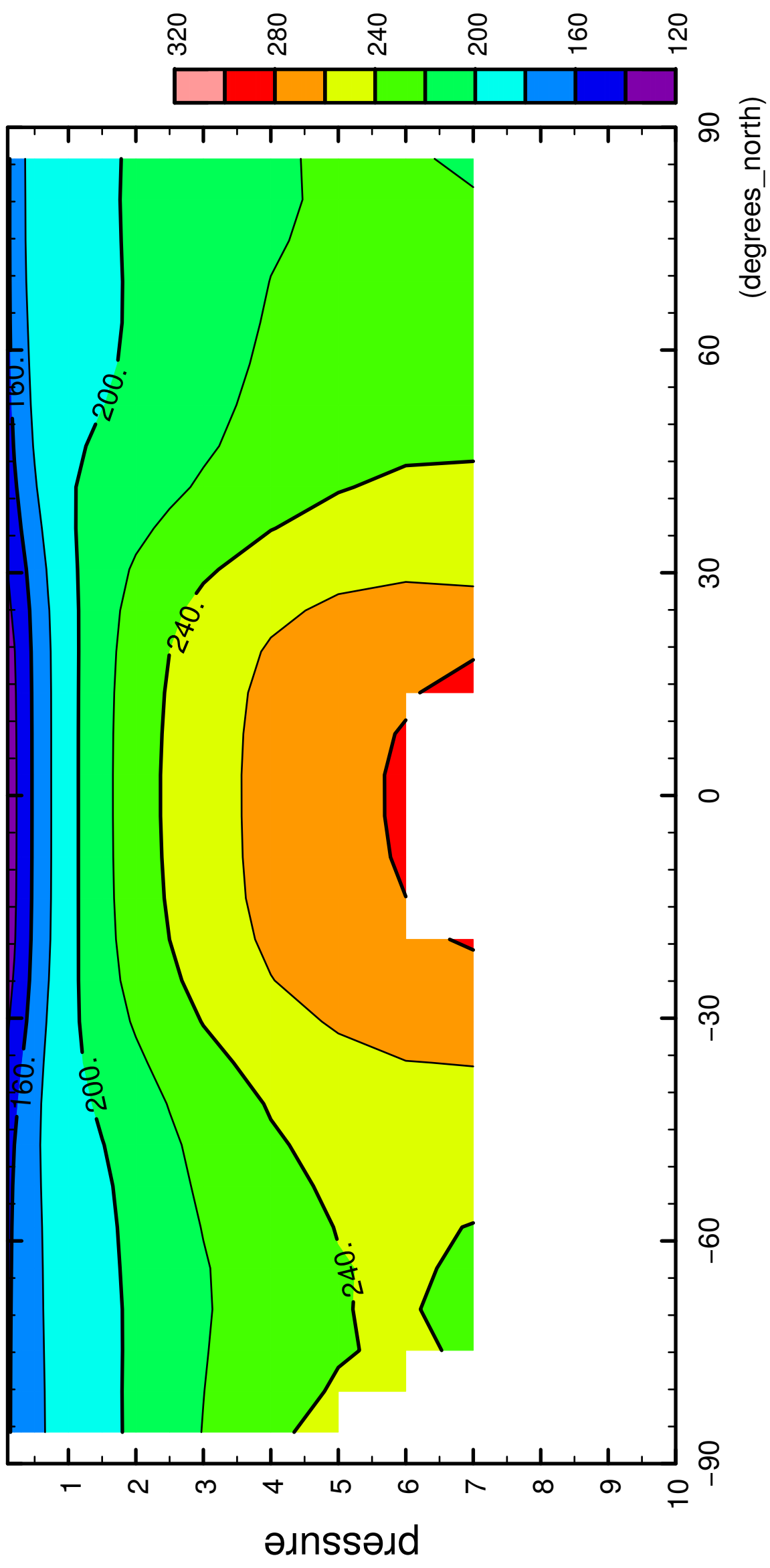
(degrees_north)

CONTOUR INTERVAL = 2.000E+01

10/12

Temp

($\times 10^4$ Pa)

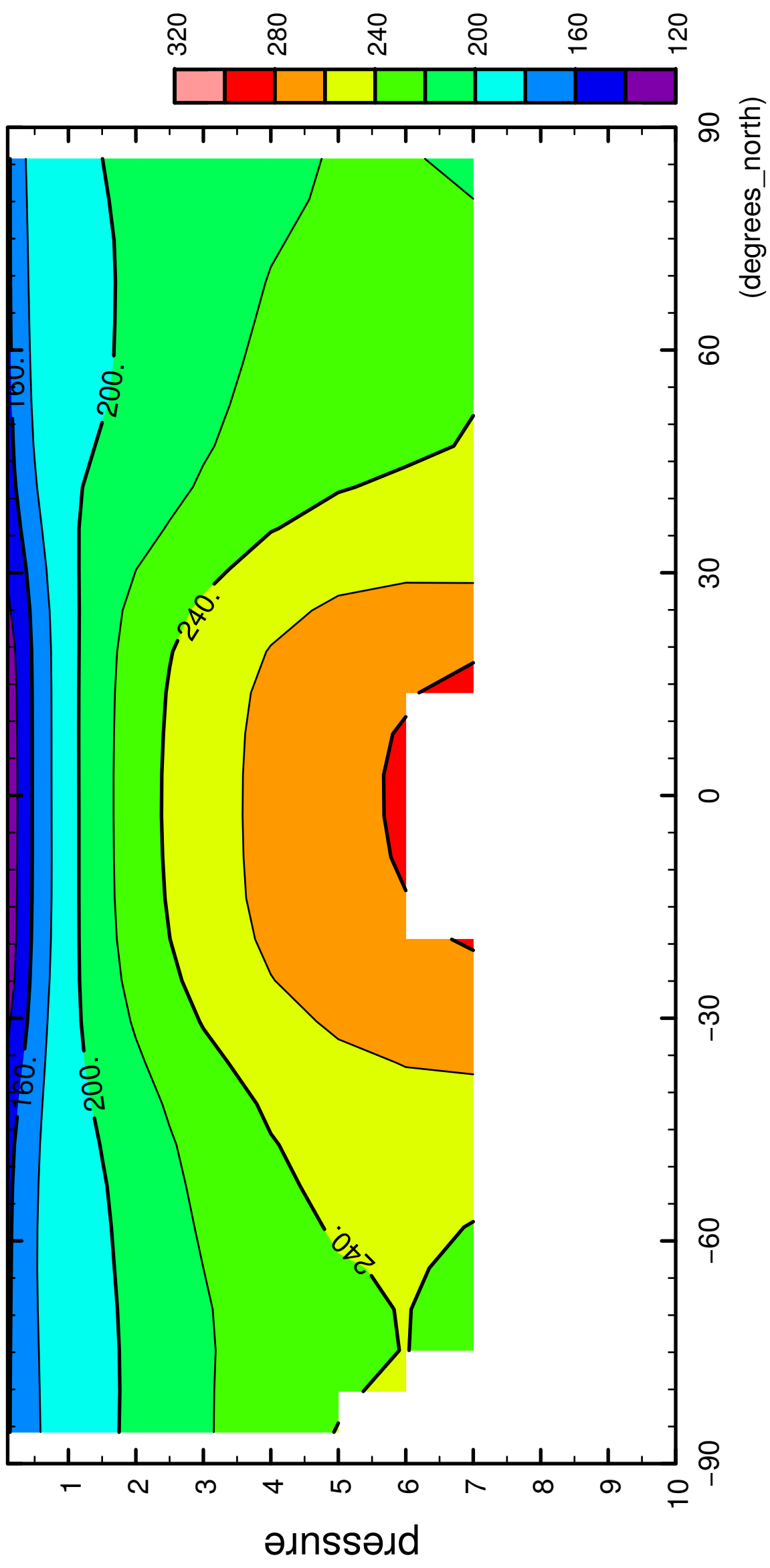


CONTOUR INTERVAL = 2.000E+01

11/12

Temp

($\times 10^4$ Pa)



latitude

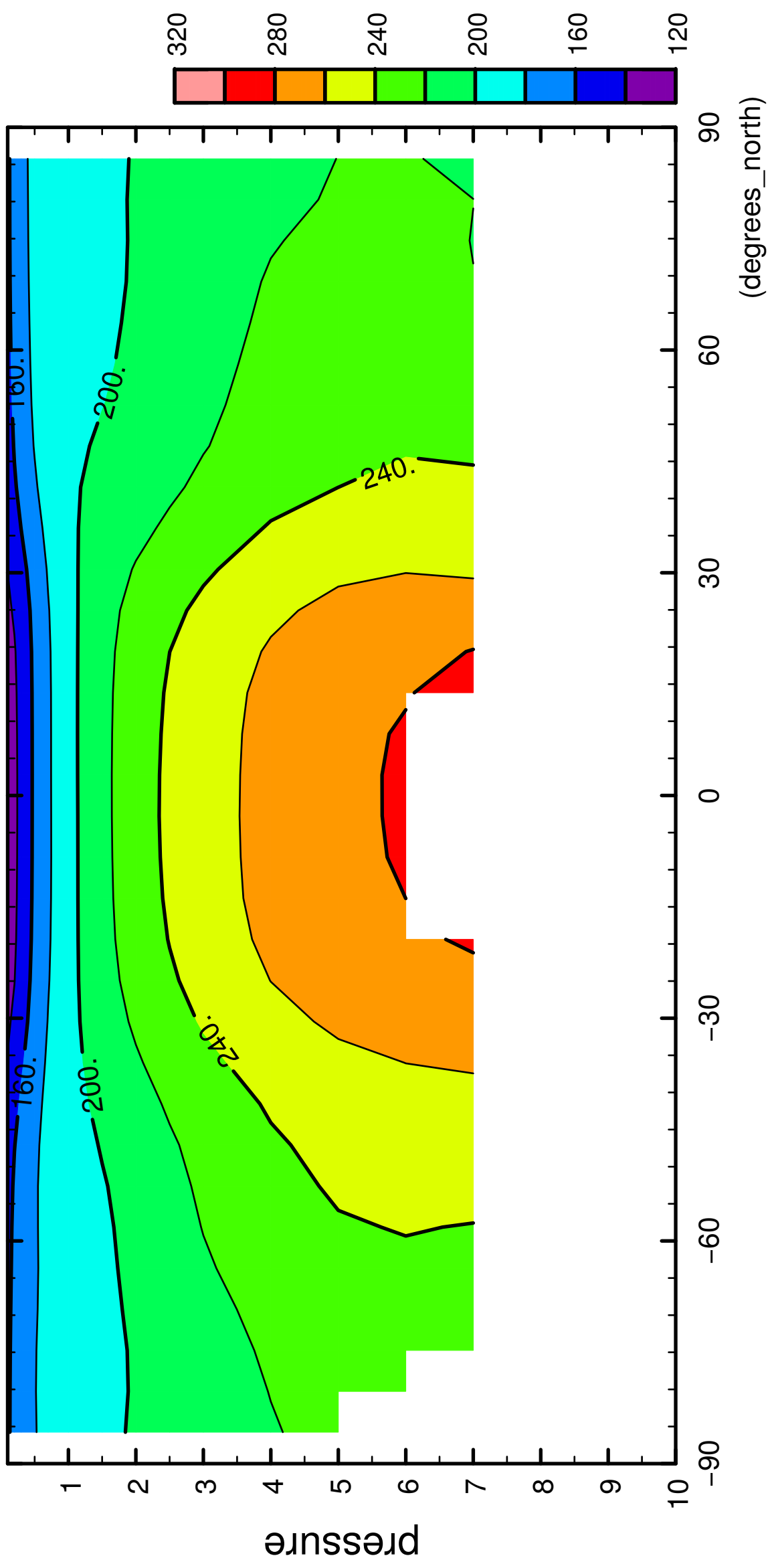
(degrees_north)

CONTOUR INTERVAL = 2.000E+01

12/12

Temp

($\times 10^4$ Pa)



latitude

(degrees_north)

CONTOUR INTERVAL = 2.000E+01