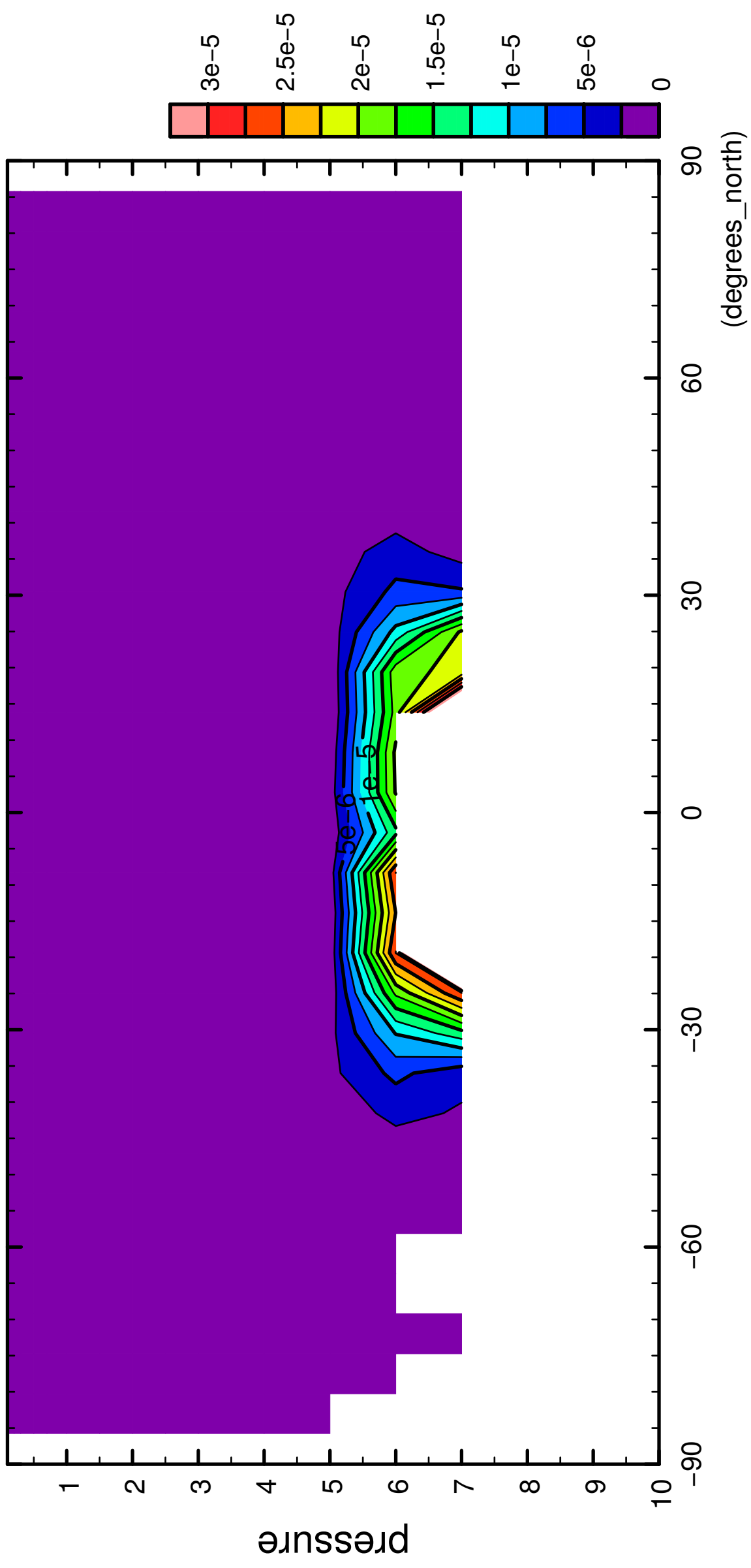


1/12

QH2OLiq

( $\times 10^4$  Pa)



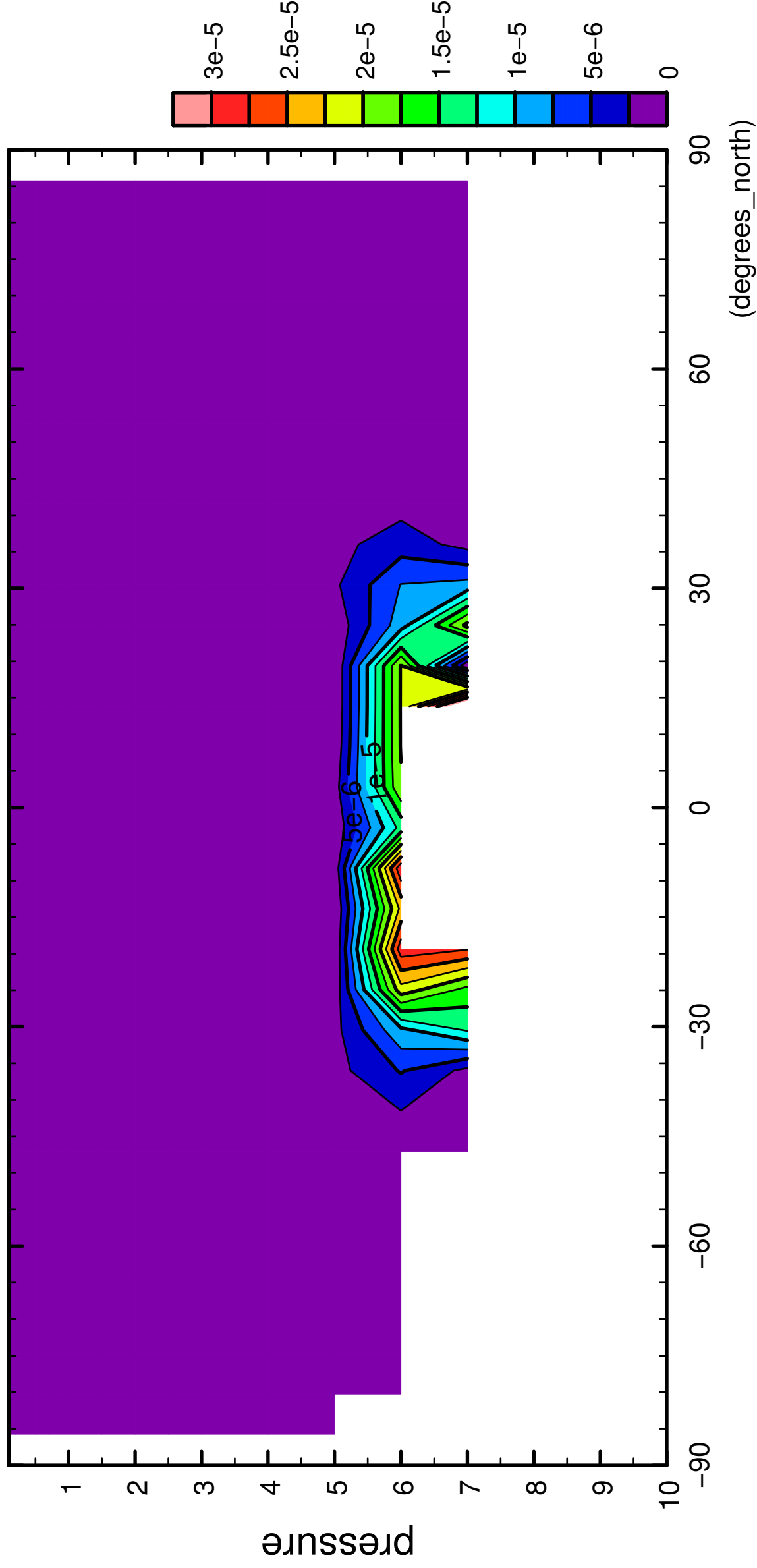
latitude

CONTOUR INTERVAL = 2.500E-06

2/12

QH2OLiq

( $\times 10^4$  Pa)



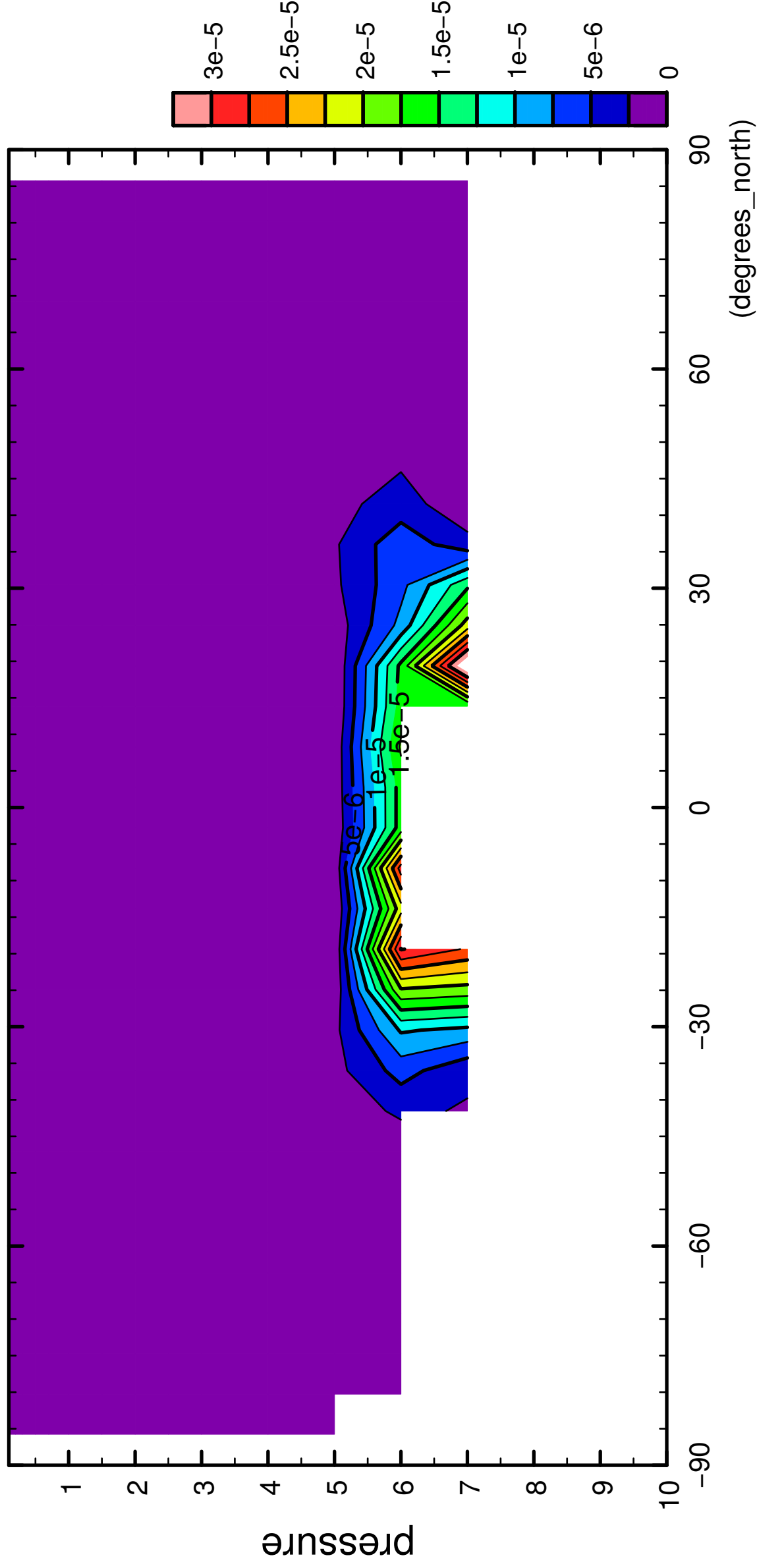
latitude

CONTOUR INTERVAL =  $2.500 \times 10^{-6}$

3/12

QH2OLiq

( $\times 10^4$  Pa)



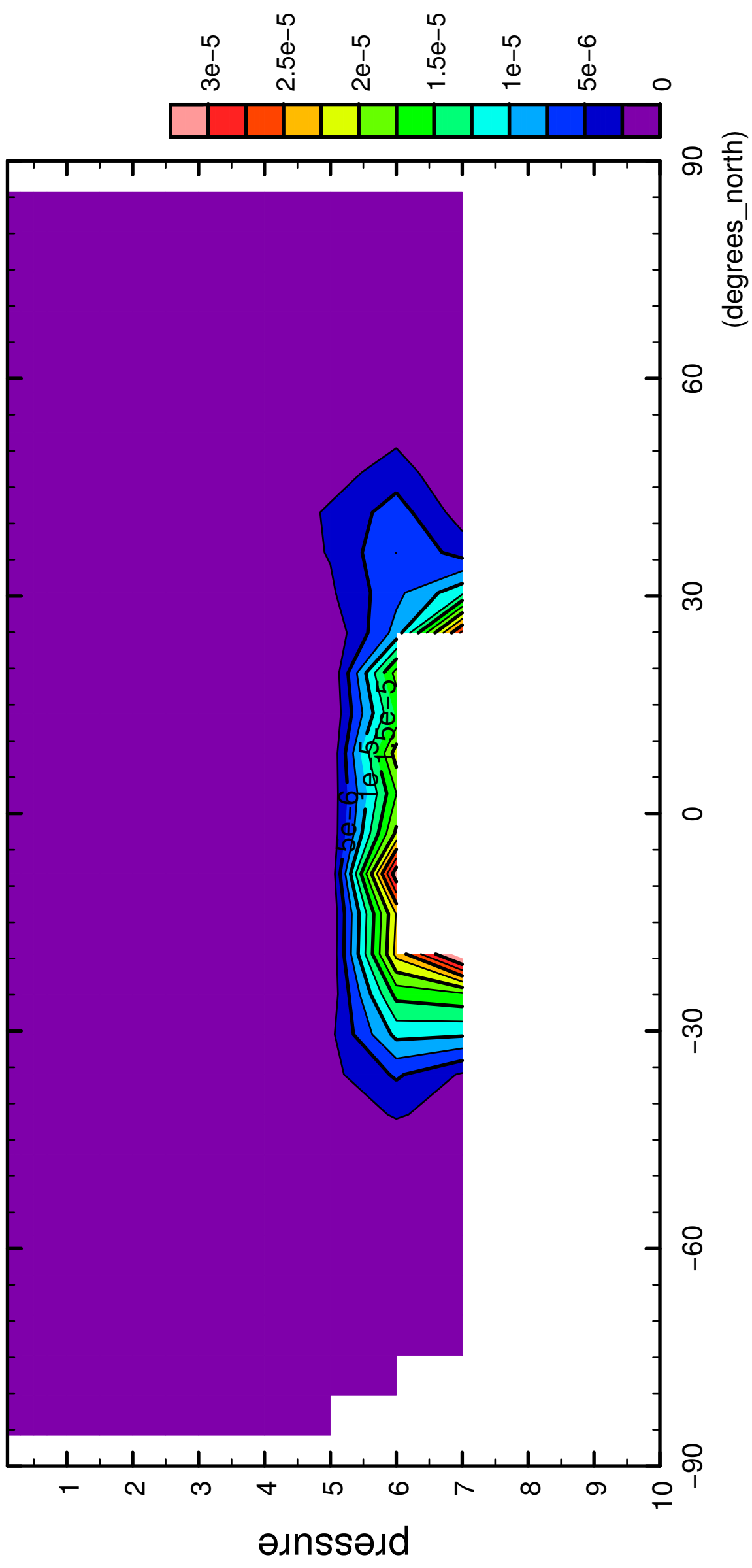
latitude

CONTOUR INTERVAL = 2.500E-06

4/12

QH2OLiq

( $\times 10^4$  Pa)



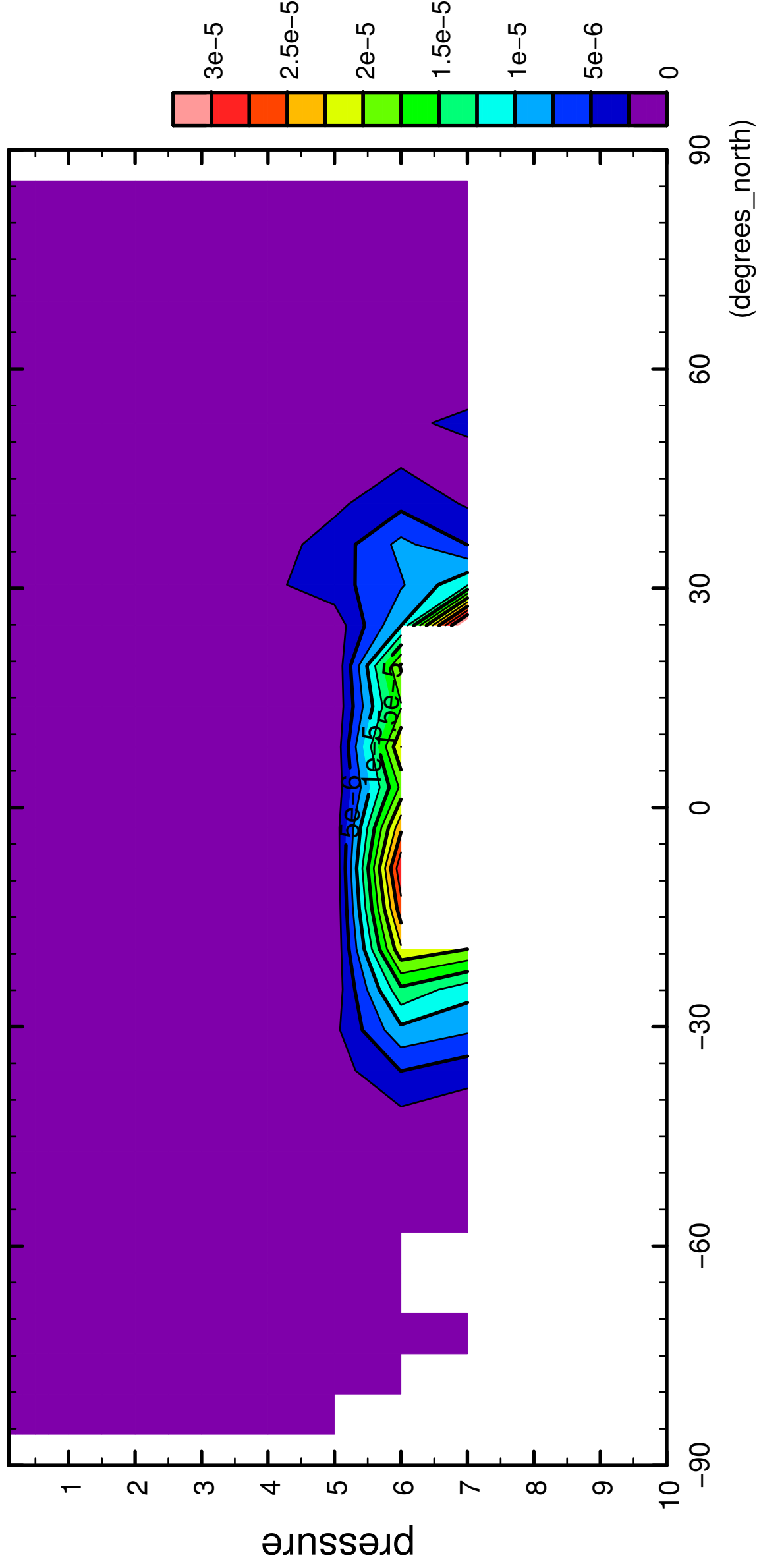
latitude

CONTOUR INTERVAL =  $2.500 \times 10^{-6}$

5/12

QH2OLiq

( $\times 10^4$  Pa)



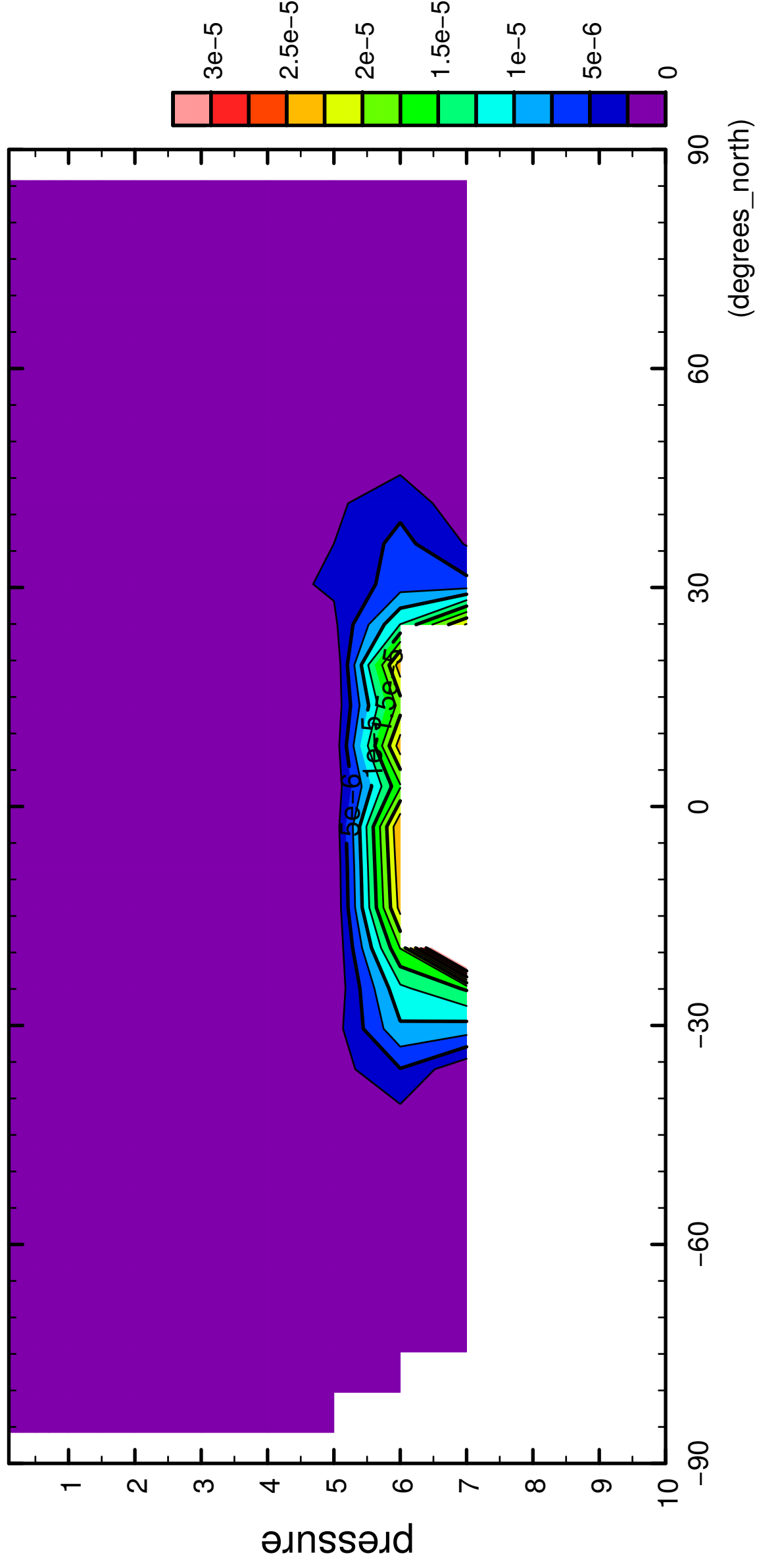
latitude

CONTOUR INTERVAL = 2.500E-06

6/12

QH2OLiq

( $\times 10^4$  Pa)



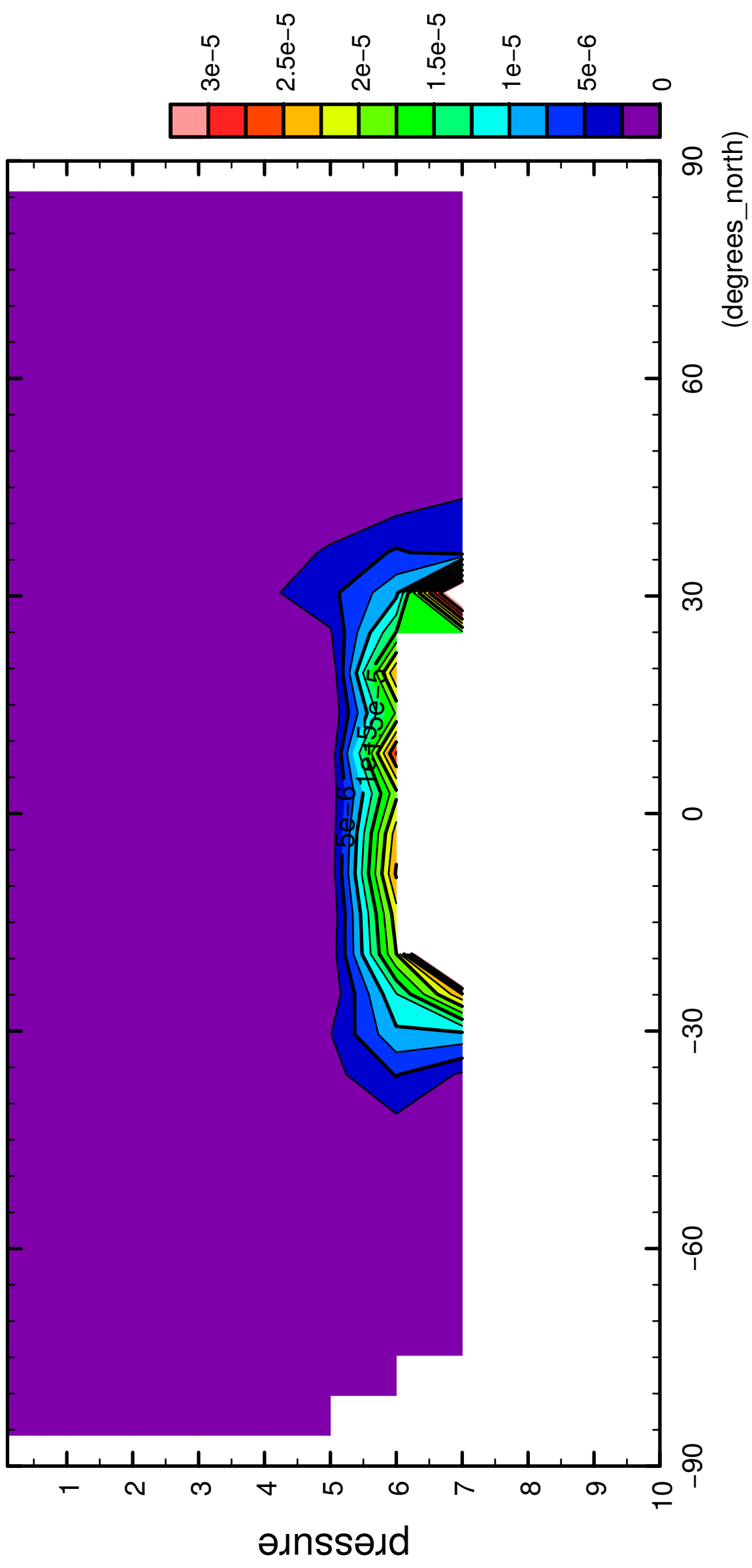
latitude

CONTOUR INTERVAL =  $2.500E-06$

7/12

QH2OLiq

( $\times 10^4$  Pa)

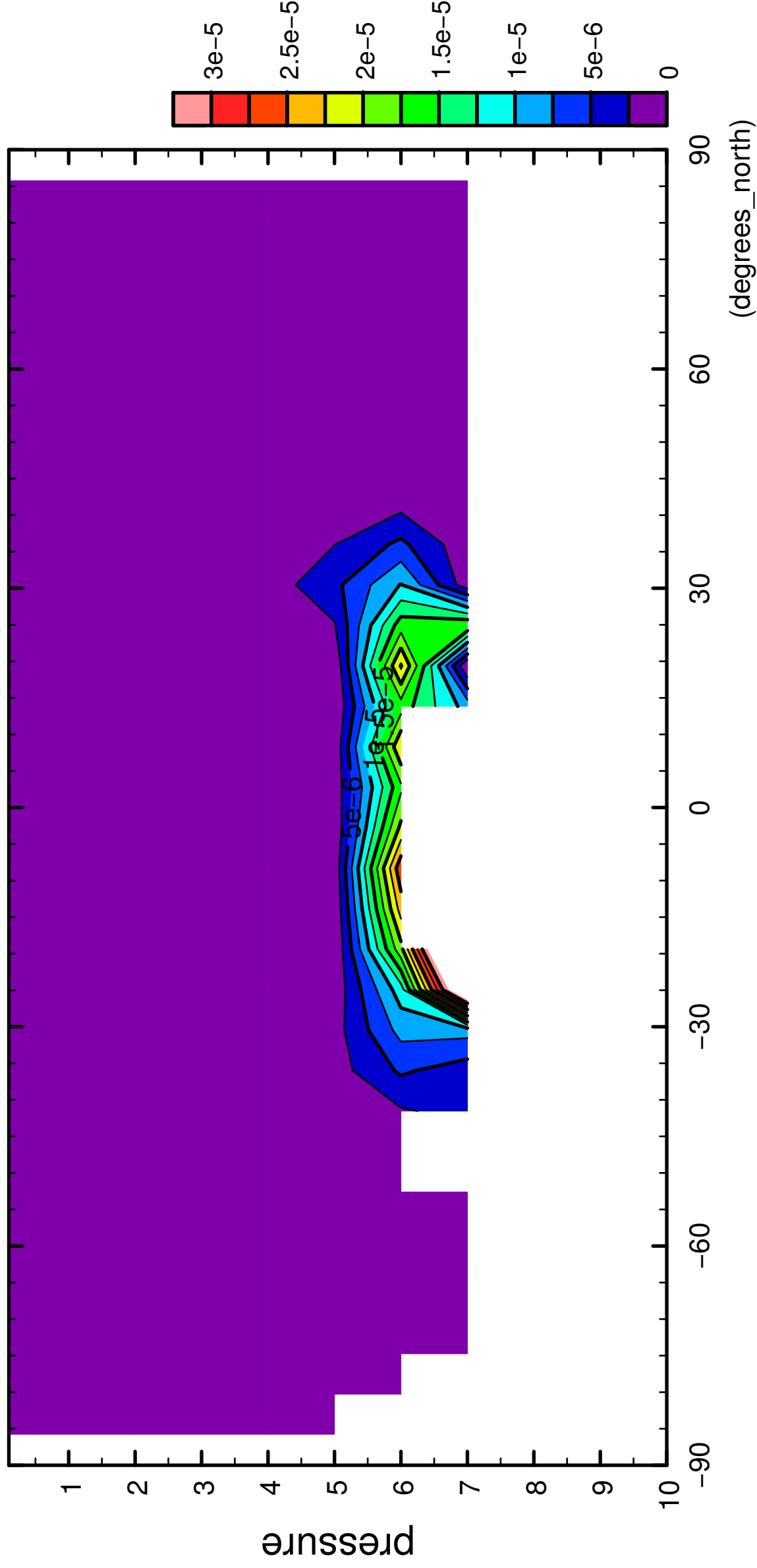


CONTOUR INTERVAL = 2.500E-06

8/12

QH2OLiq

( $\times 10^4$  Pa)



latitude

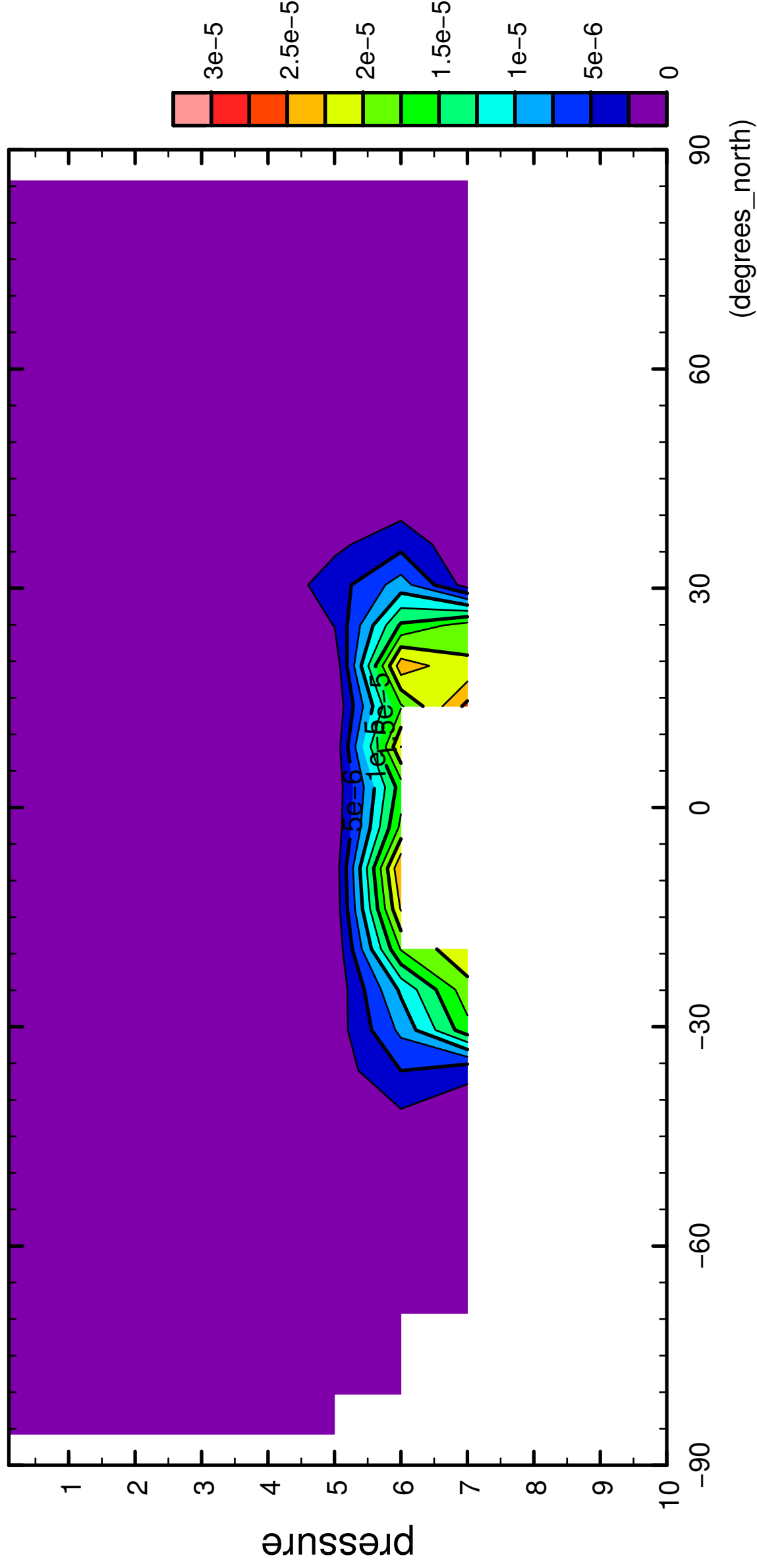
CONTOUR INTERVAL =  $2.500 \times 10^{-6}$



9/12

QH2OLiq

( $\times 10^4$  Pa)



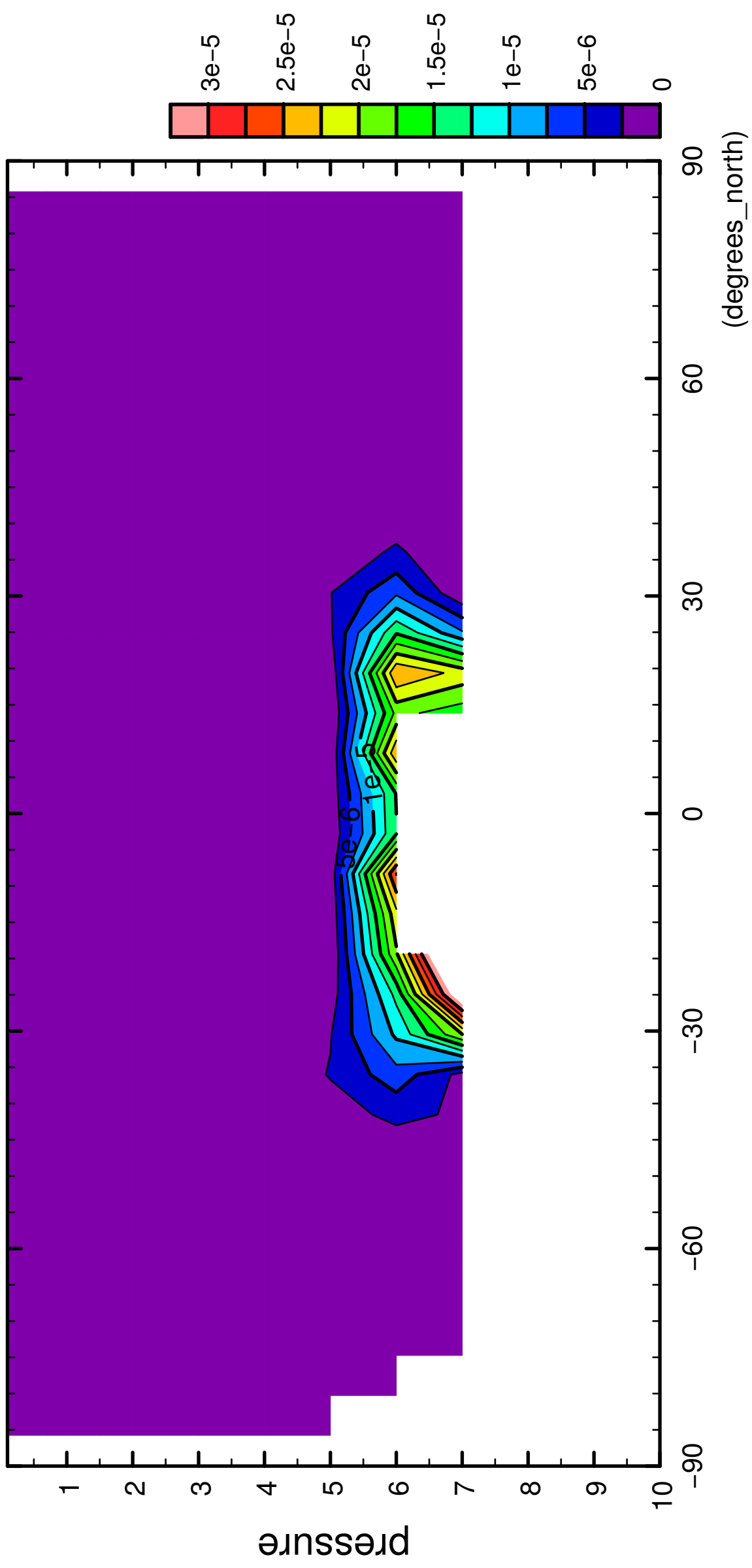
latitude

CONTOUR INTERVAL =  $2.500 \times 10^{-6}$

10/12

QH2OLiq

( $\times 10^4$  Pa)



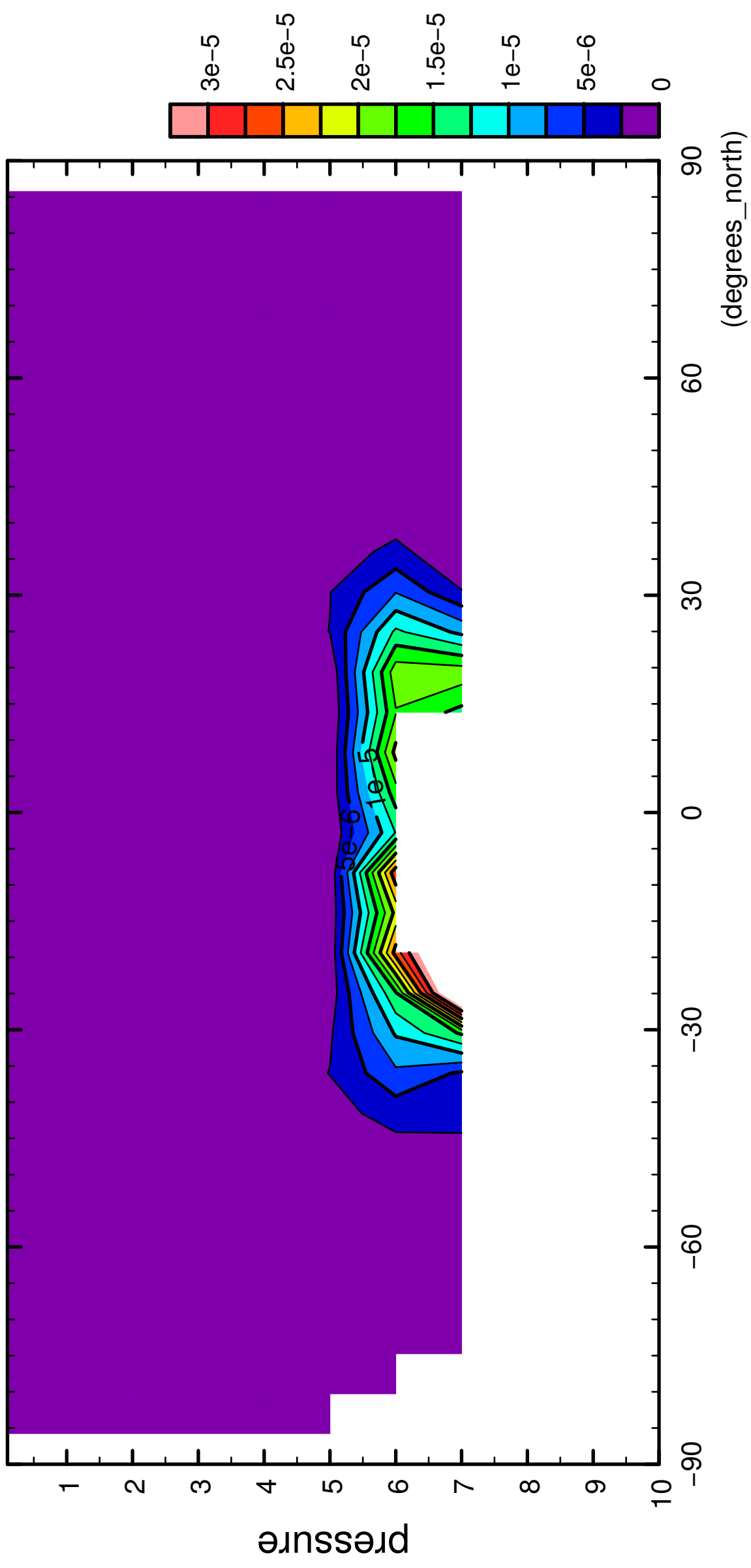
latitude

CONTOUR INTERVAL =  $2.500 \times 10^{-6}$

11/12

QH2OLiq

( $\times 10^4$  Pa)



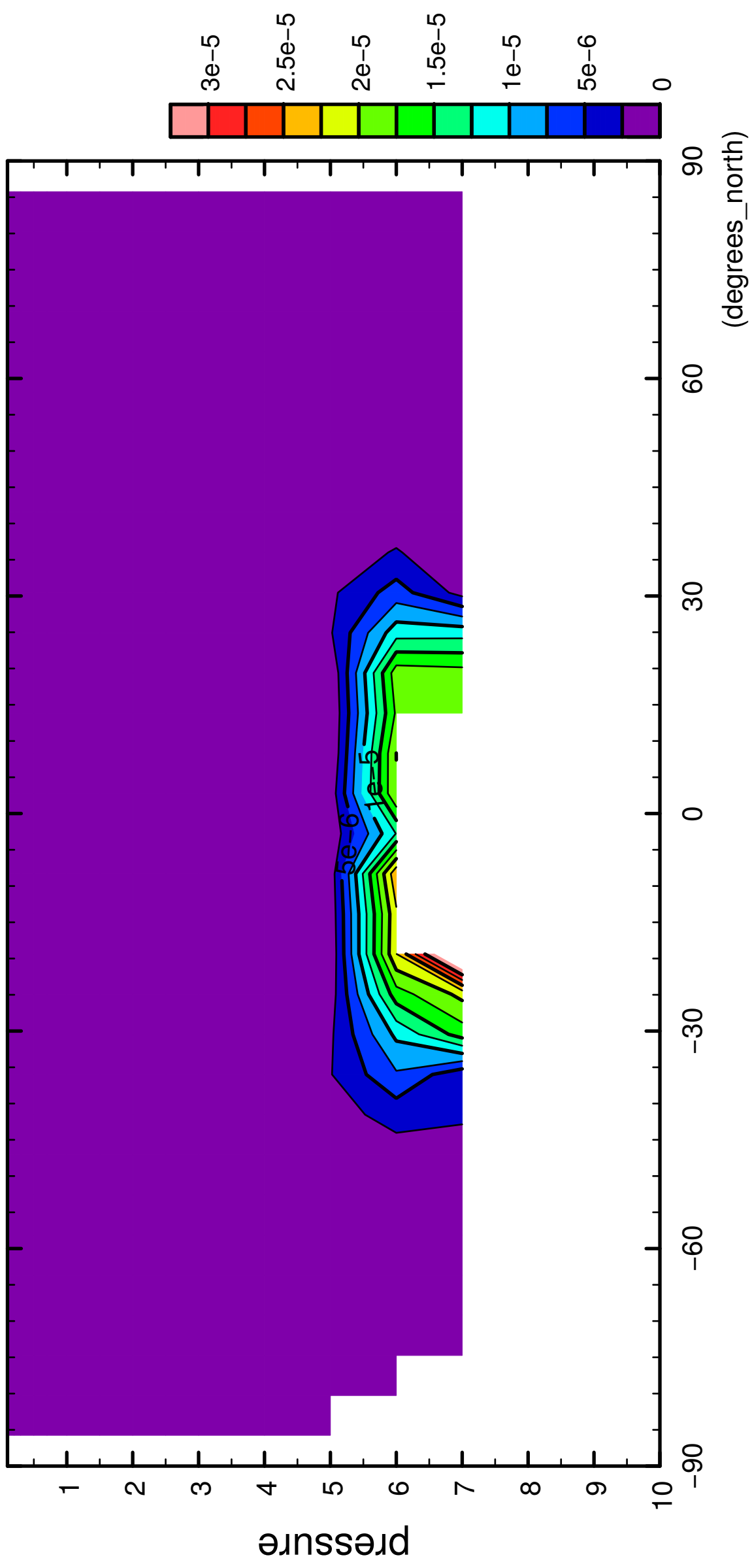
latitude

CONTOUR INTERVAL =  $2.500 \times 10^{-6}$

12/12

QH2OLiq

( $\times 10^4$  Pa)



latitude

CONTOUR INTERVAL =  $2.500 \times 10^{-6}$