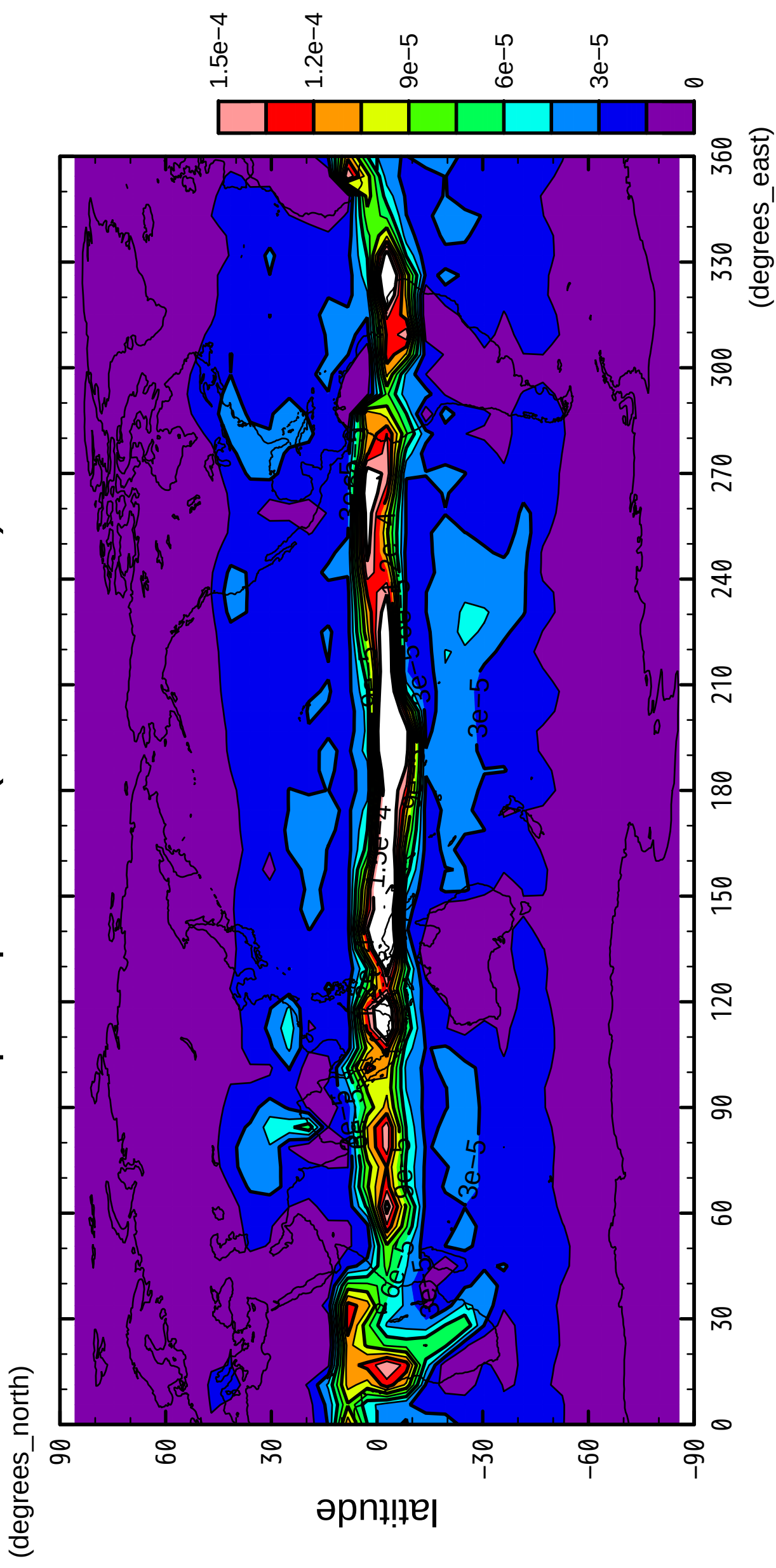


1/12

precipitation (rain + snow)

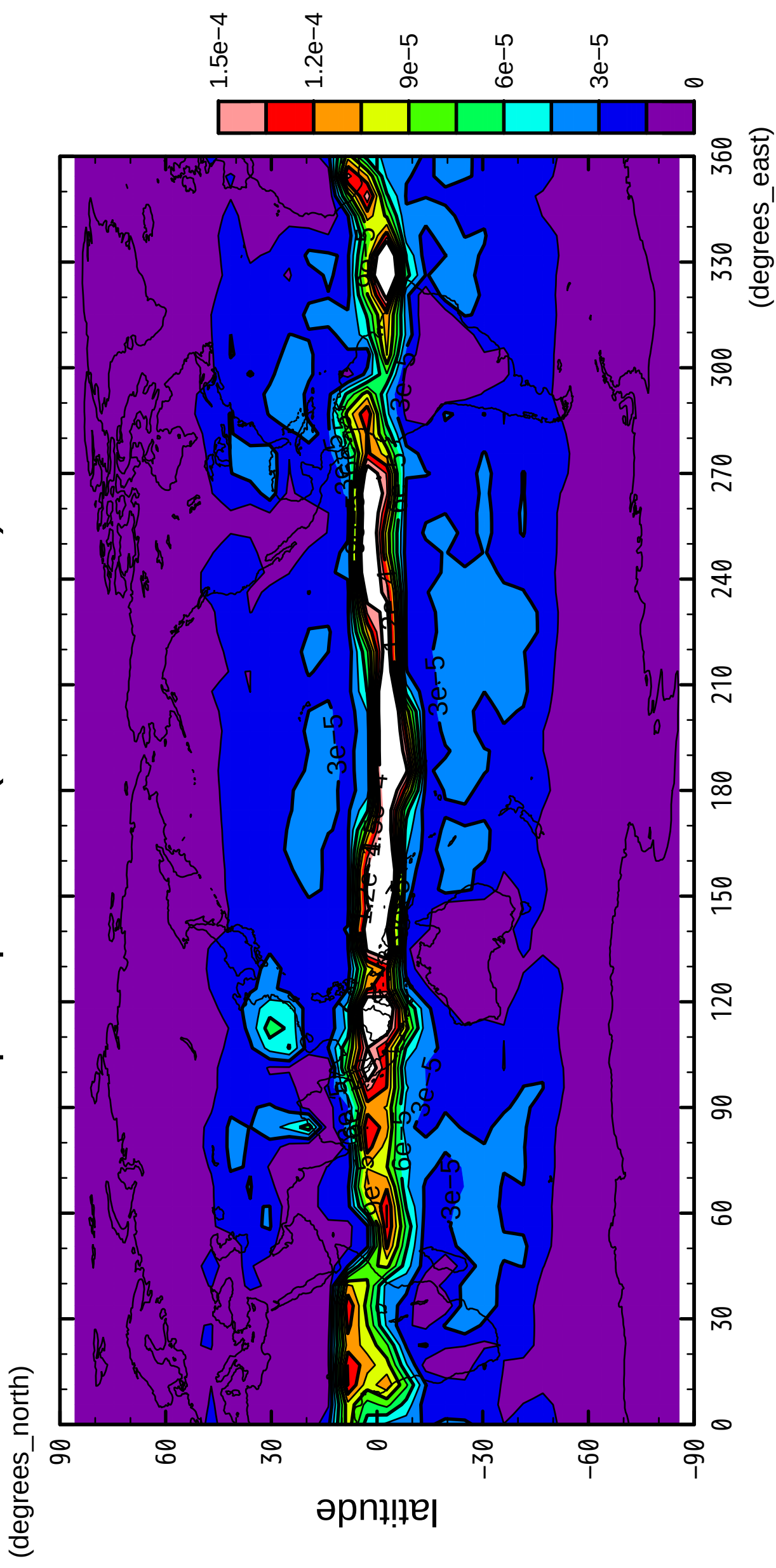


longitude

CONTOUR INTERVAL = 1.500E-05

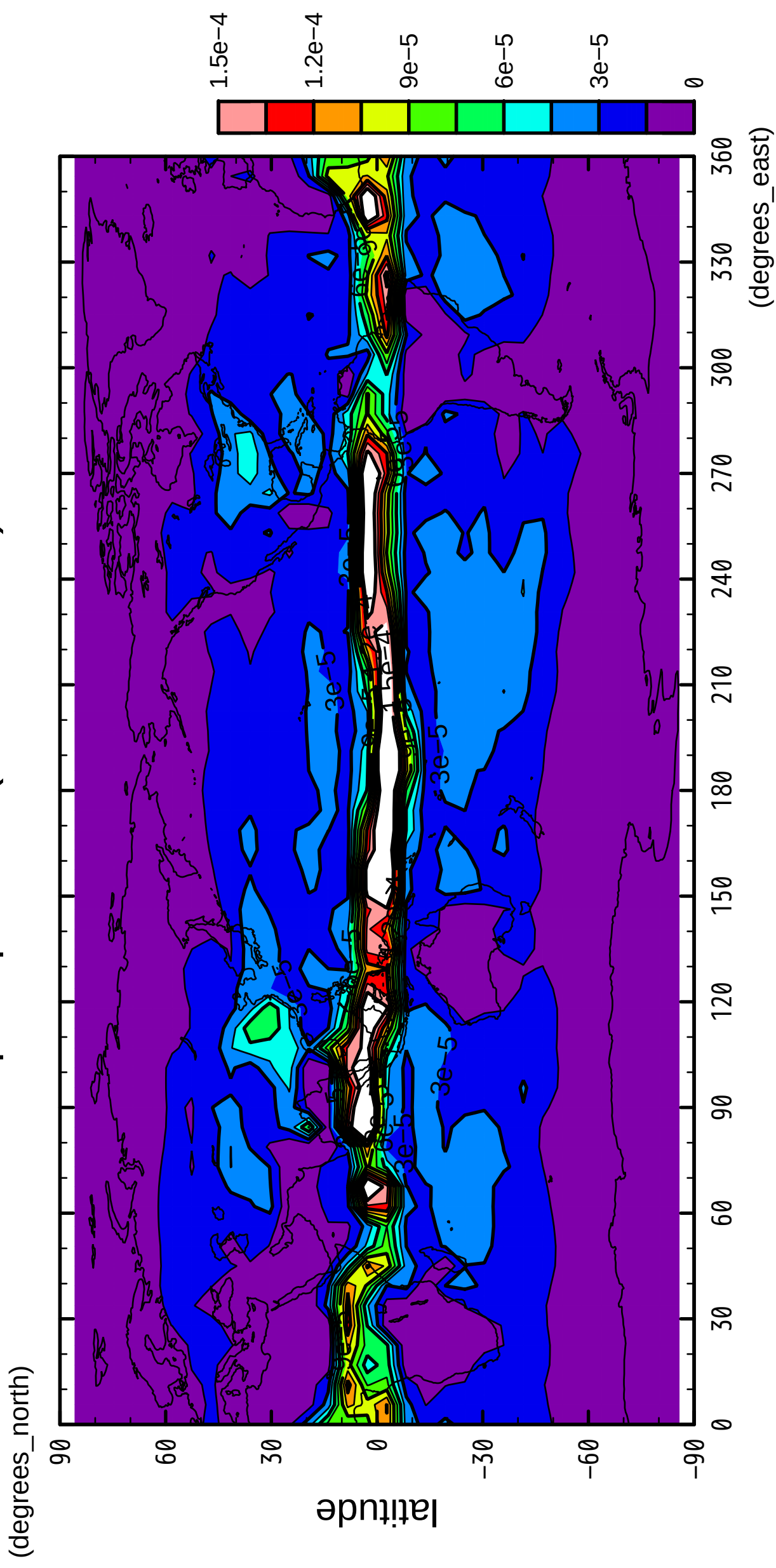
2/12

precipitation (rain + snow)



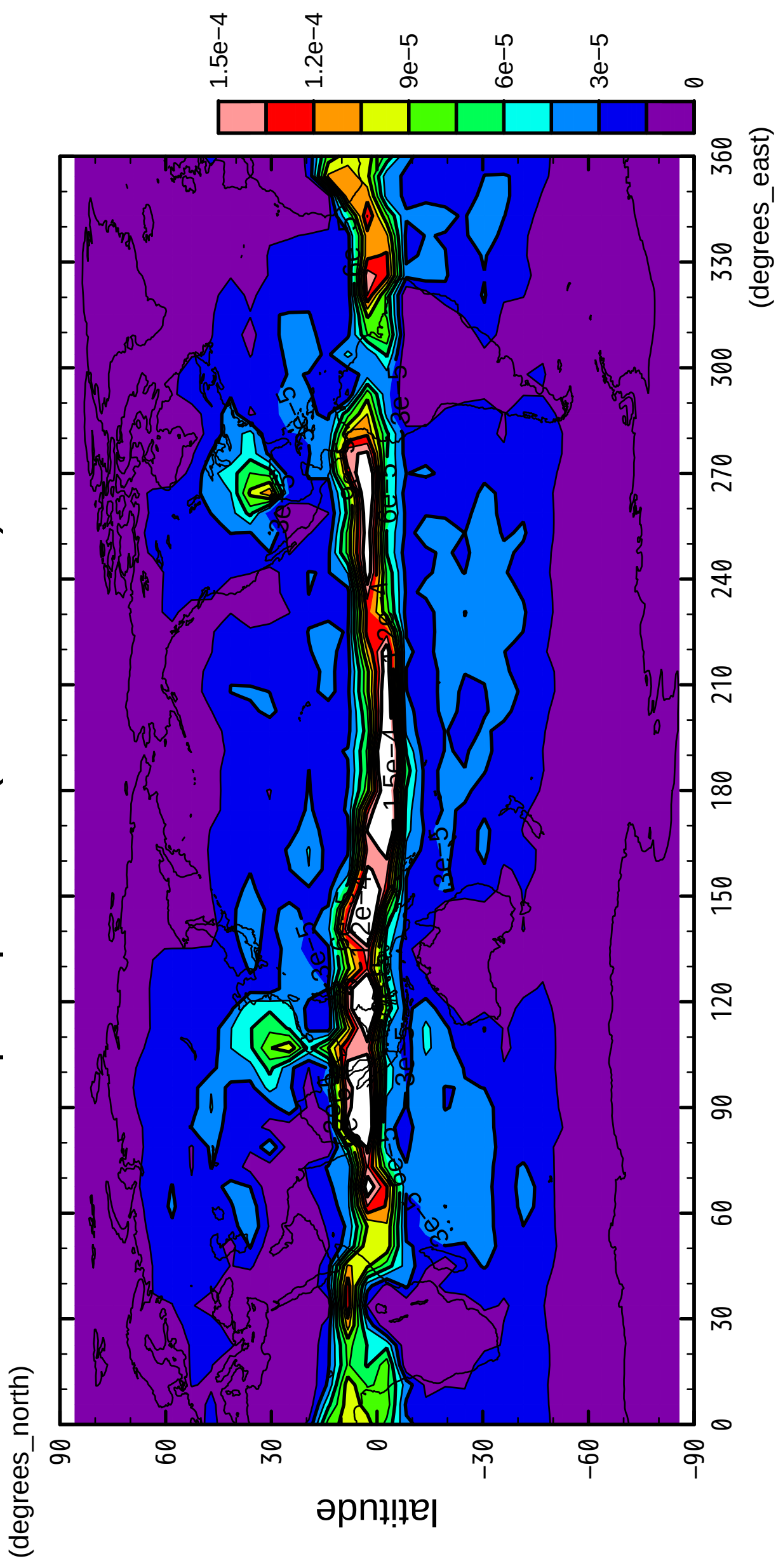
3/12

precipitation (rain + snow)



4/12

precipitation (rain + snow)

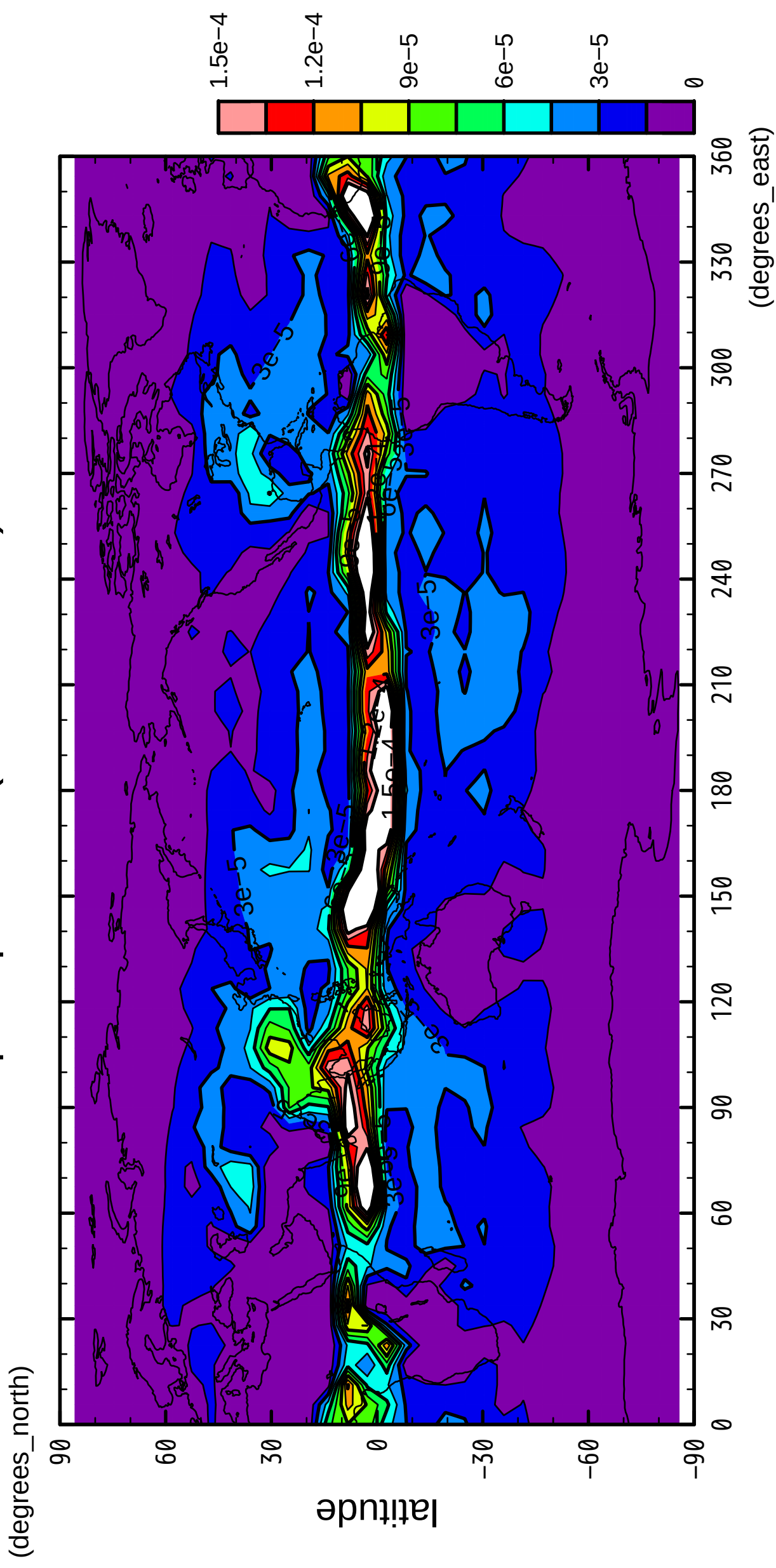


longitude

CONTOUR INTERVAL = 1.500E-05

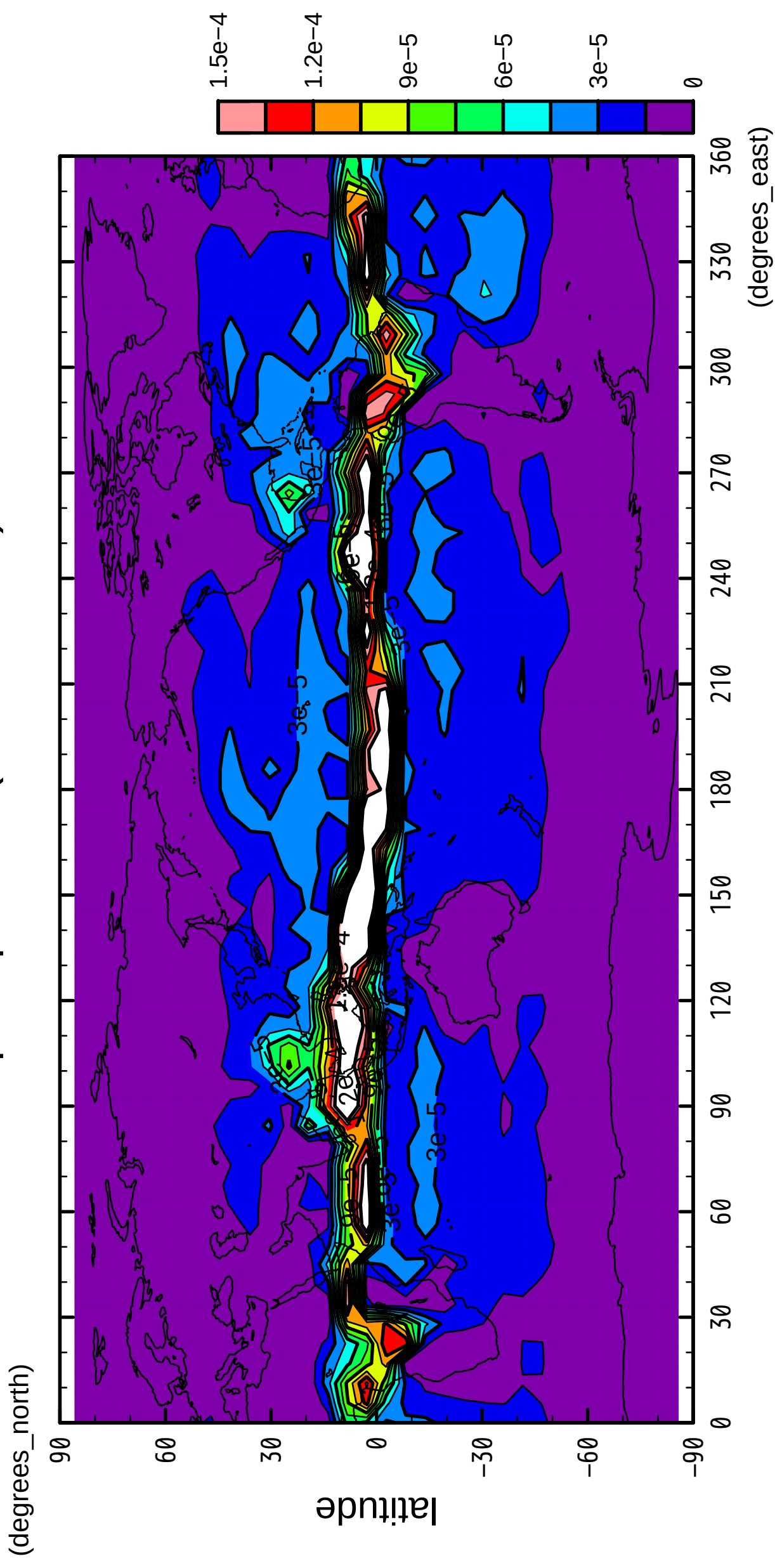
5/12

precipitation (rain + snow)



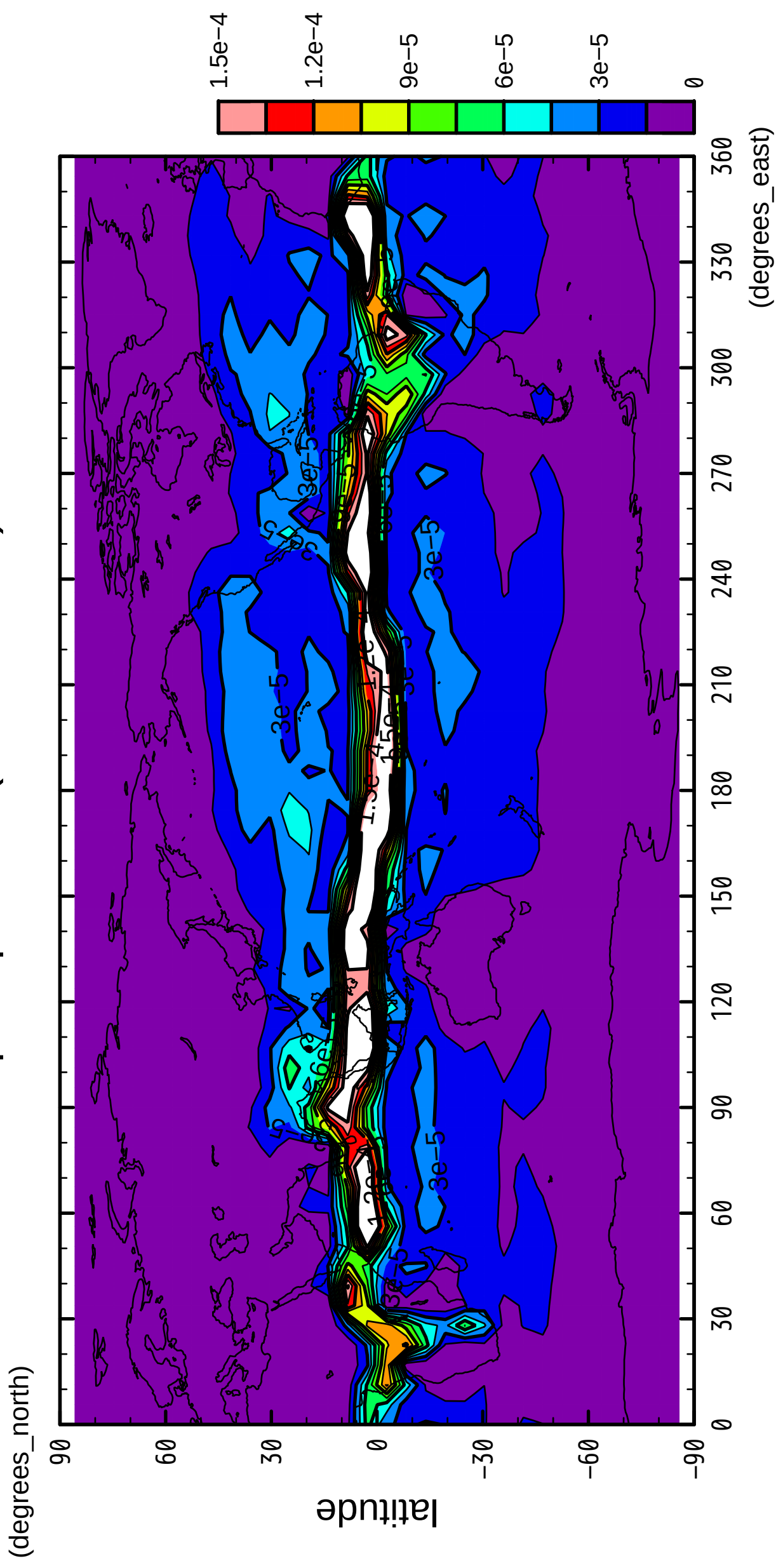
7/12

precipitation (rain + snow)



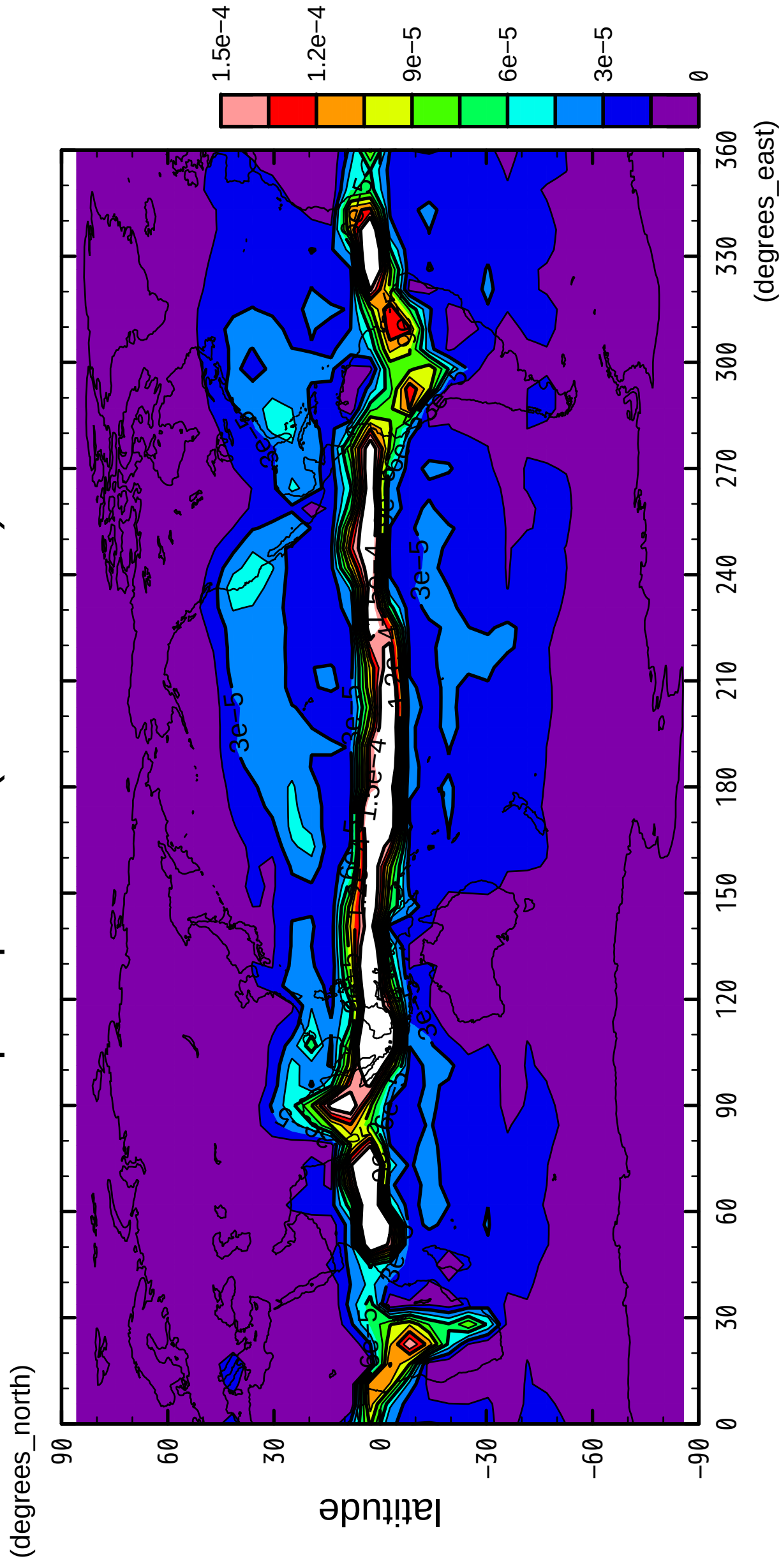
8/12

precipitation (rain + snow)



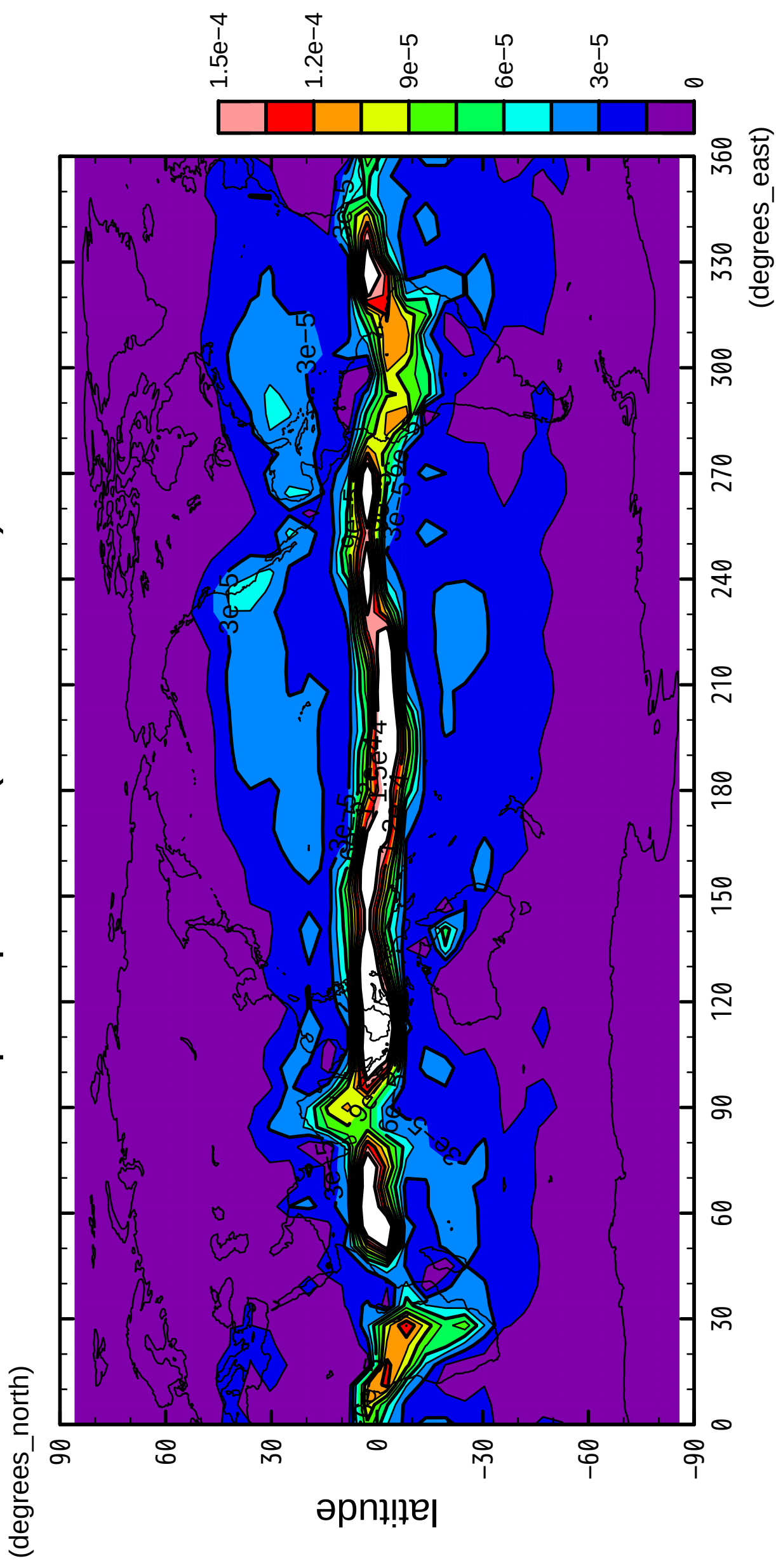
9/12

precipitation (rain + snow)



10/12

precipitation (rain + snow)

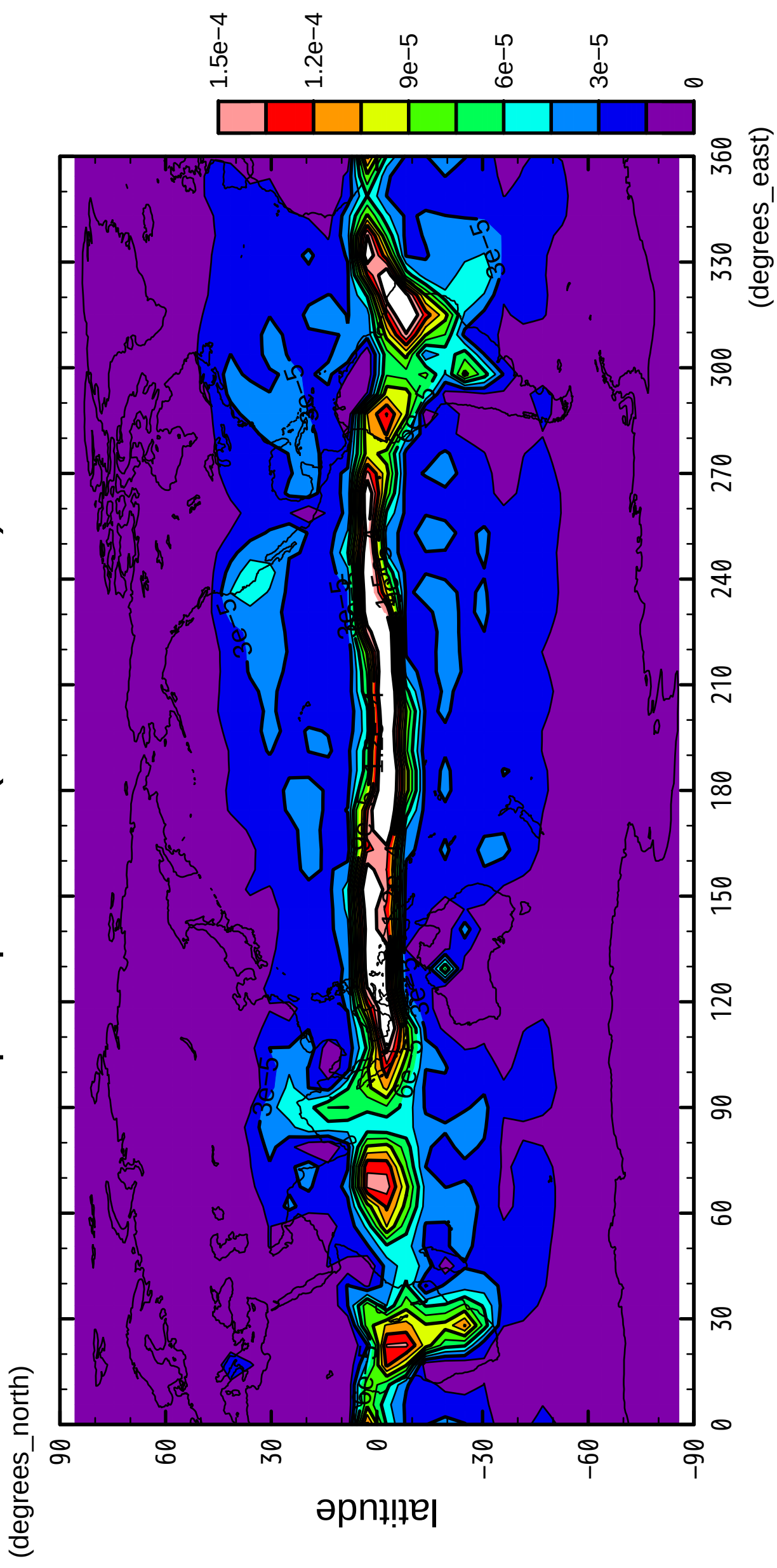


longitude

CONTOUR INTERVAL = 1.500E-05

11/12

precipitation (rain + snow)



12/12

precipitation (rain + snow)

