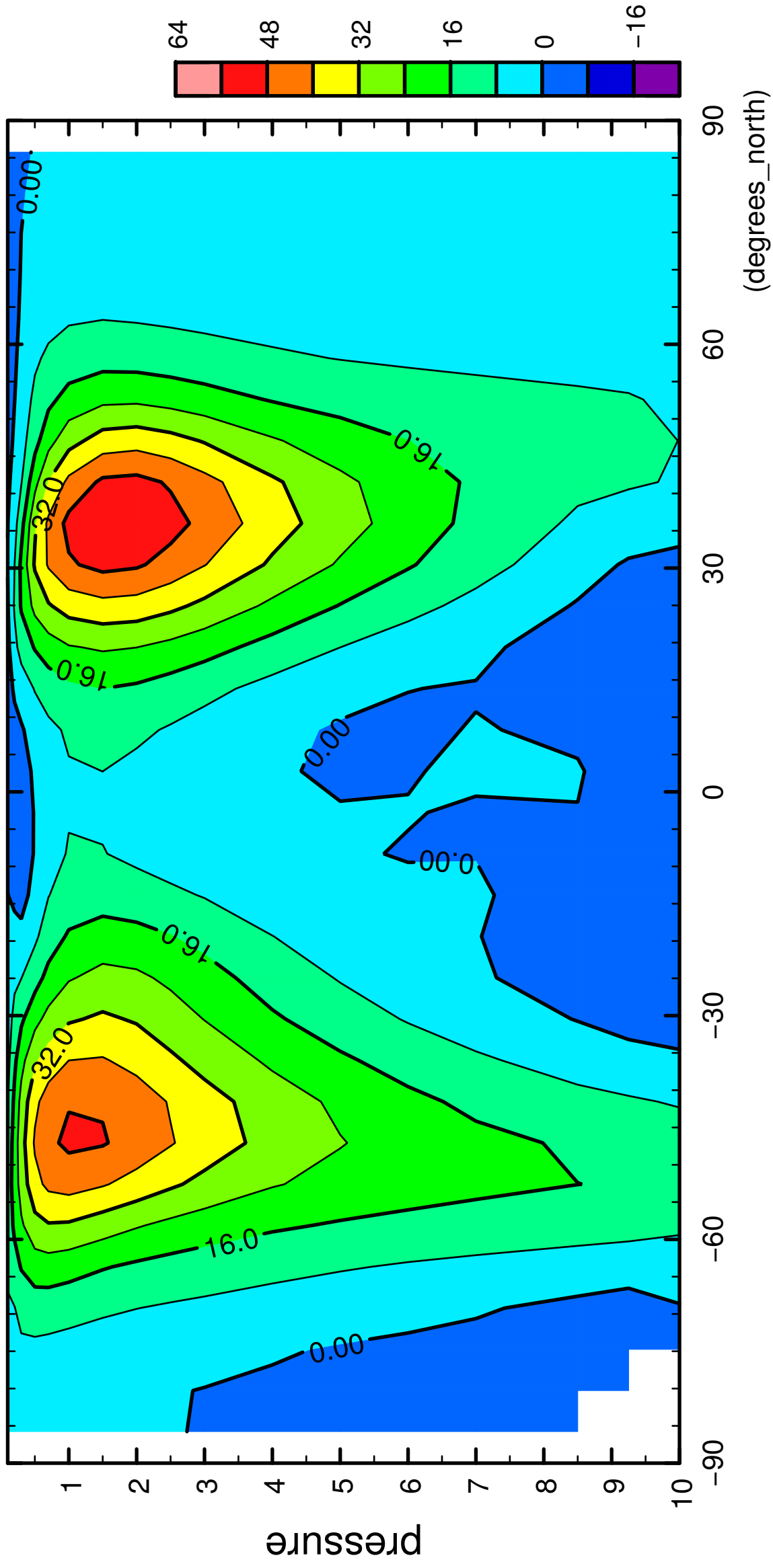


1/12

U

($\times 10^4$ Pa)



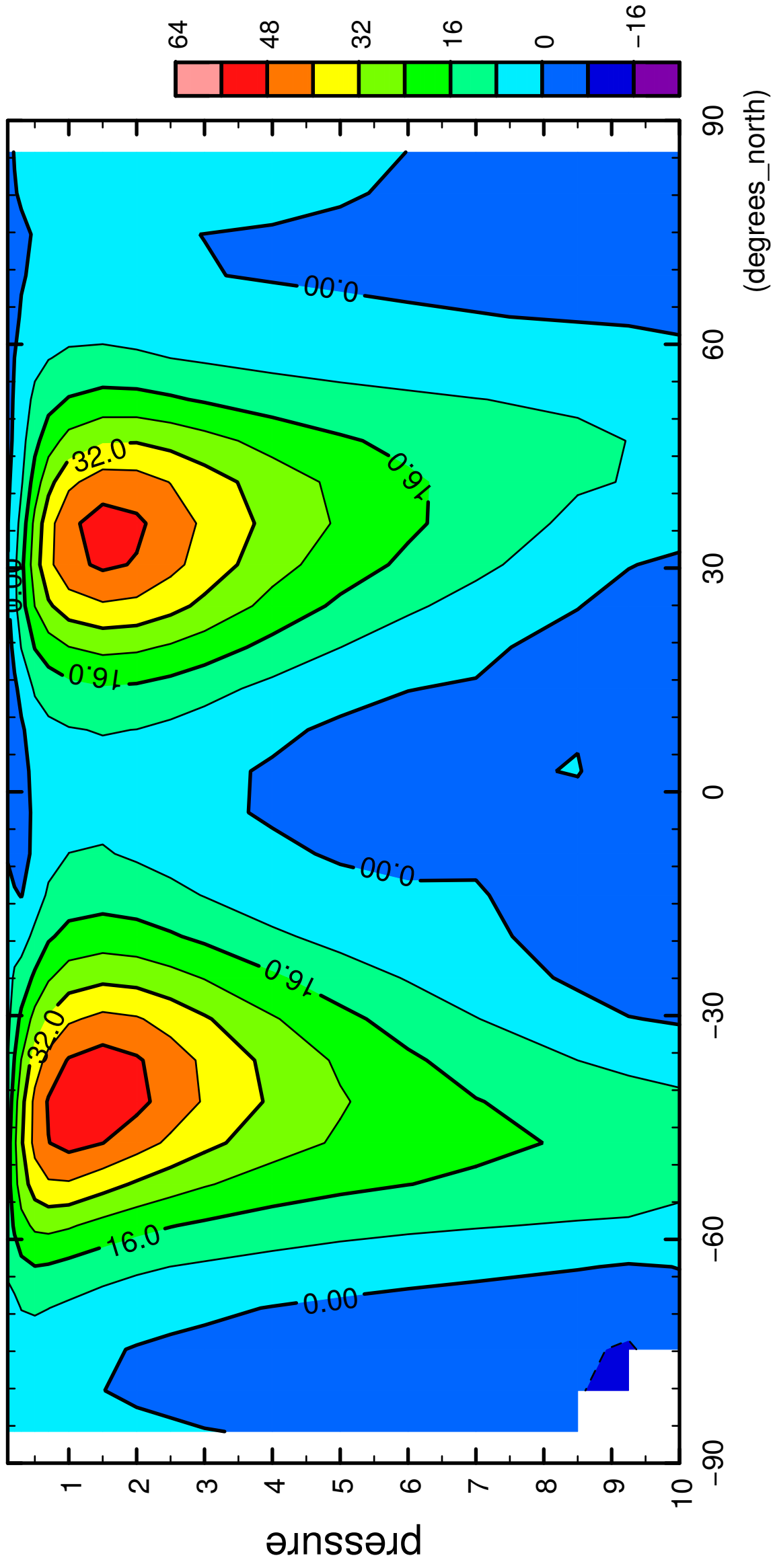
latitude

CONTOUR INTERVAL = 8.000E+00

2/12

U

($\times 10^4$ Pa)



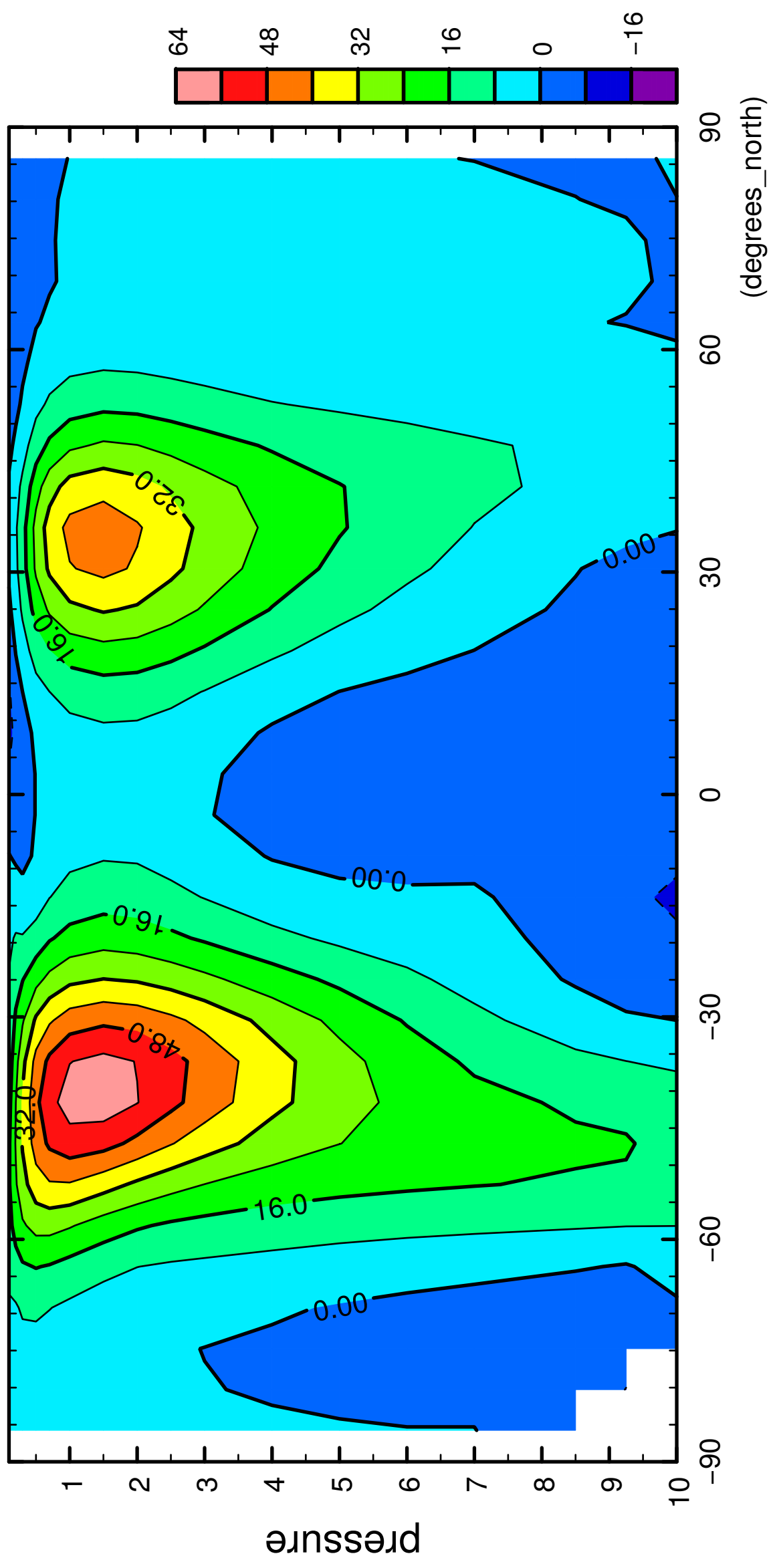
latitude

CONTOUR INTERVAL = 8.000E+00

3/12

U

($\times 10^4$ Pa)



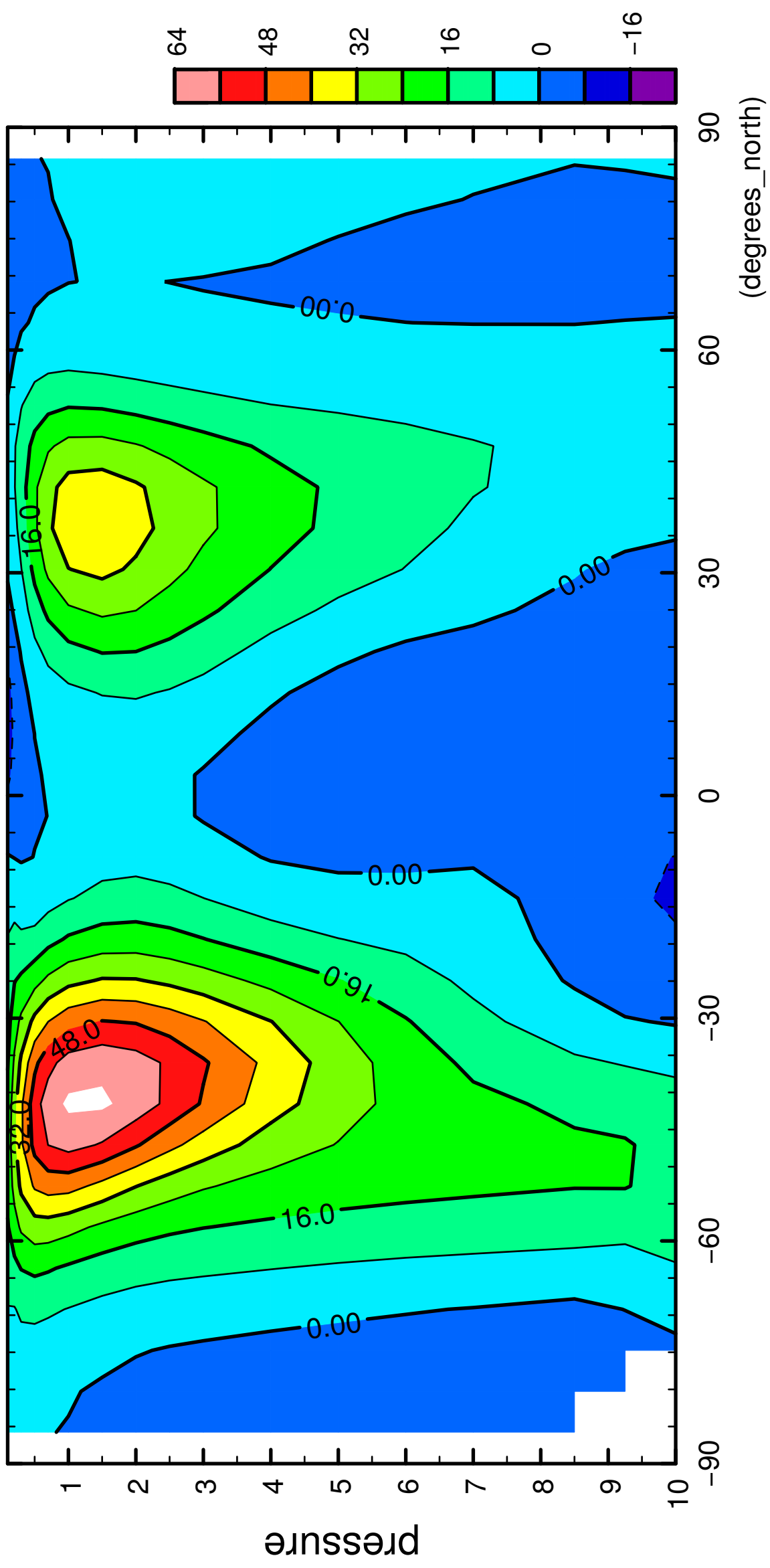
latitude

CONTOUR INTERVAL = 8.000E+00

4/12

U

($\times 10^4$ Pa)



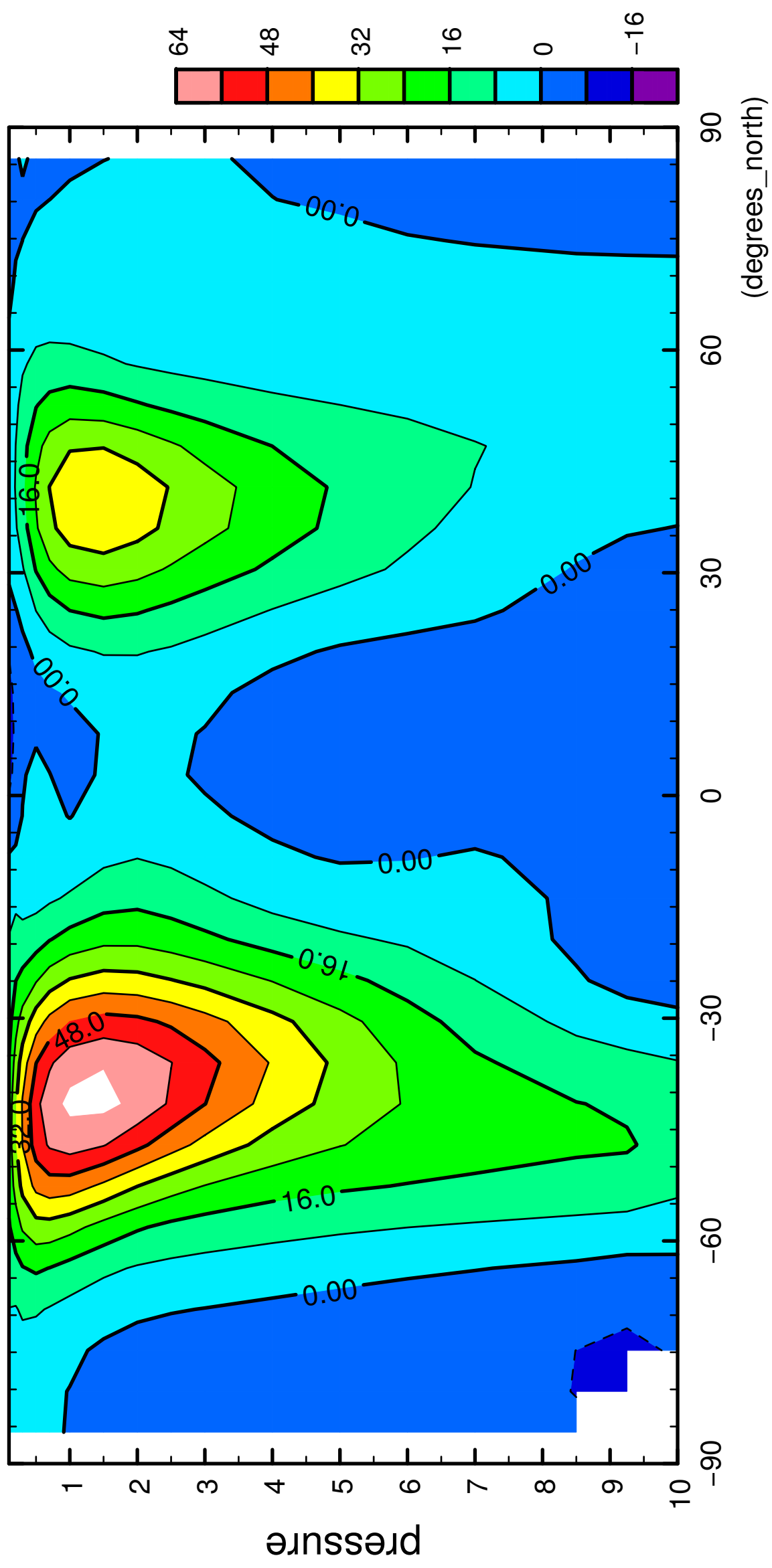
latitude

CONTOUR INTERVAL = 8.000E+00

5/12

U

($\times 10^4$ Pa)



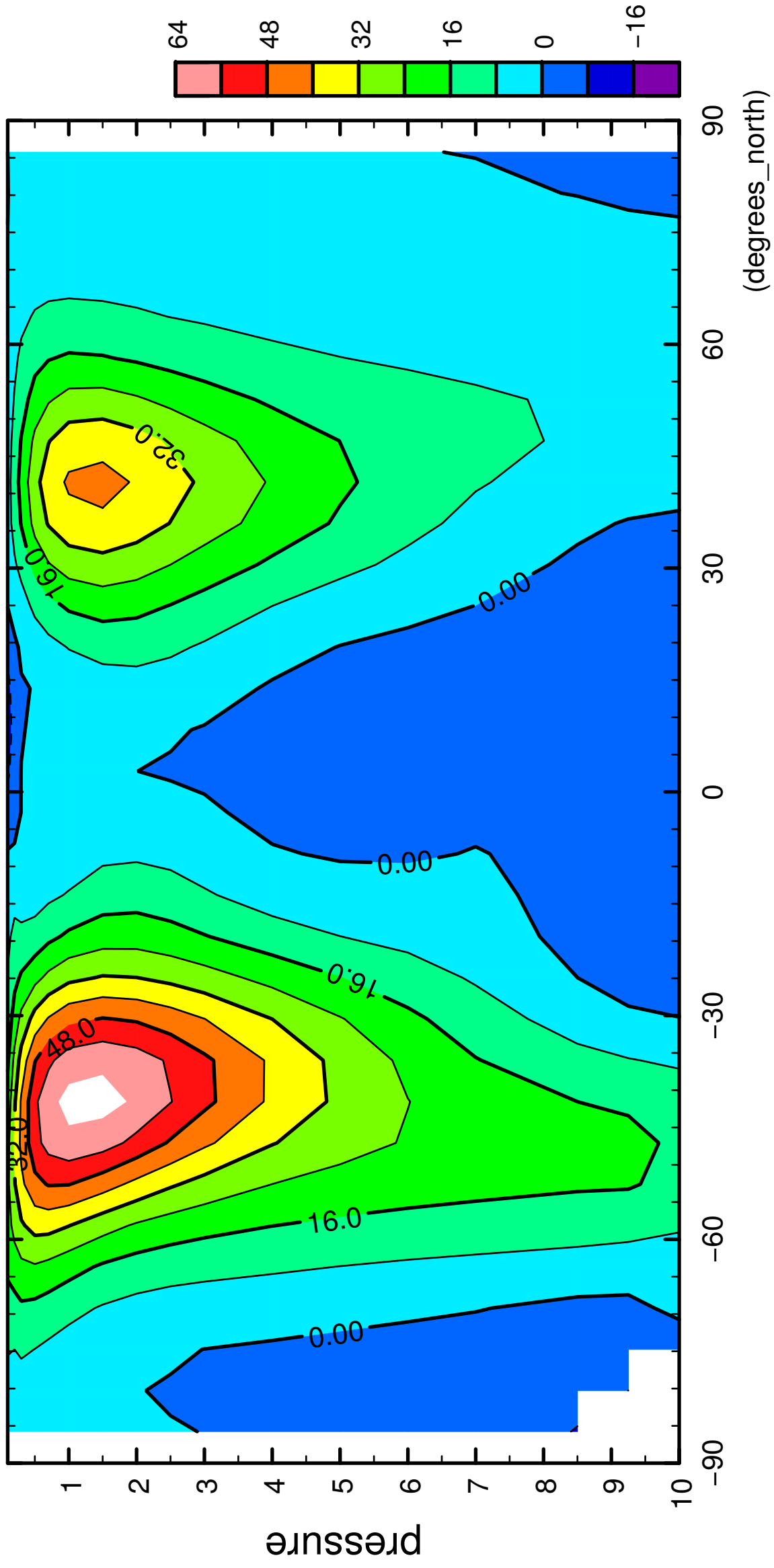
latitude

CONTOUR INTERVAL = 8.000E+00

6/12

U

($\times 10^4$ Pa)



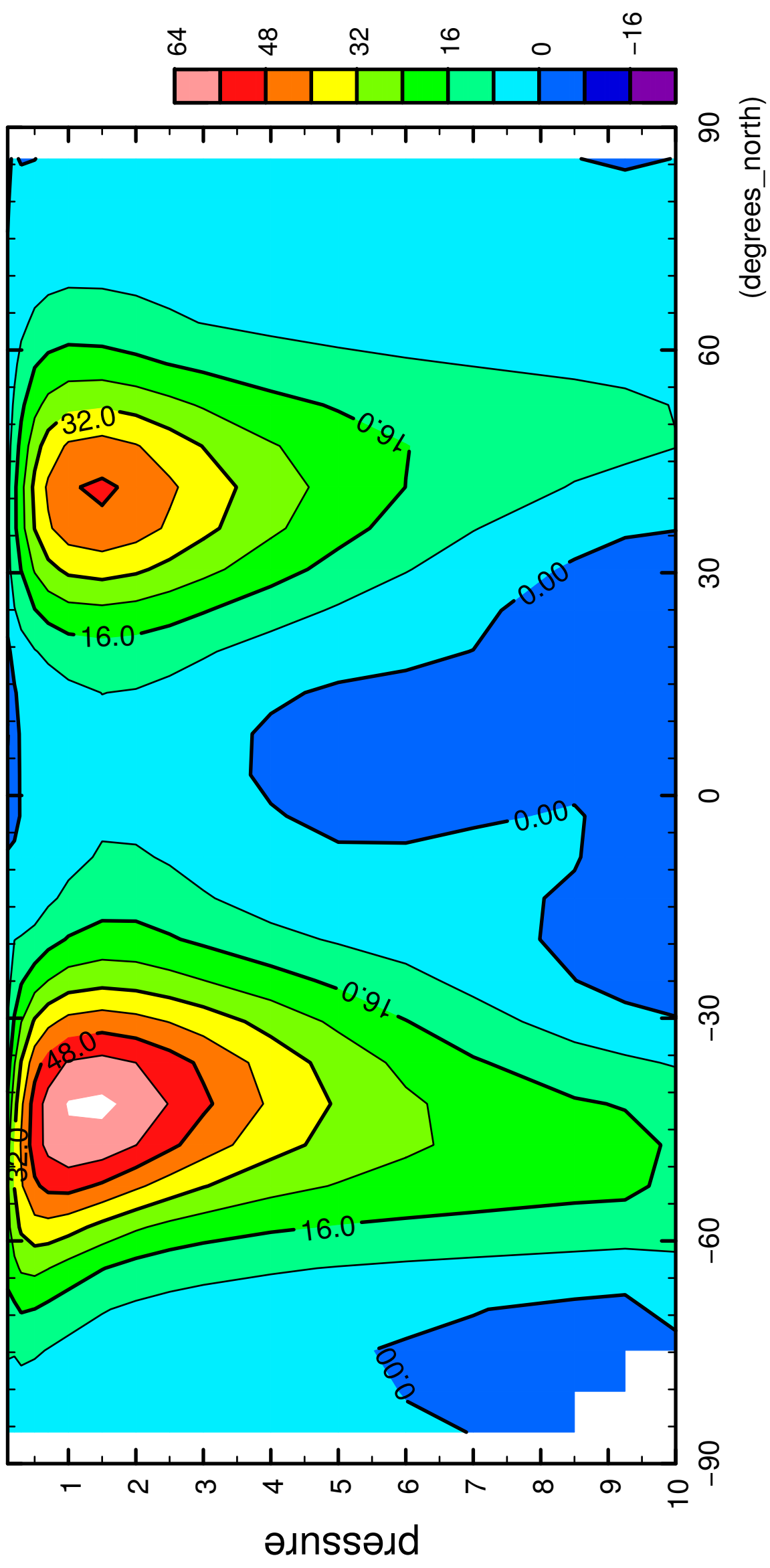
latitude

CONTOUR INTERVAL = 8.000E+00

7/12

U

($\times 10^4$ Pa)



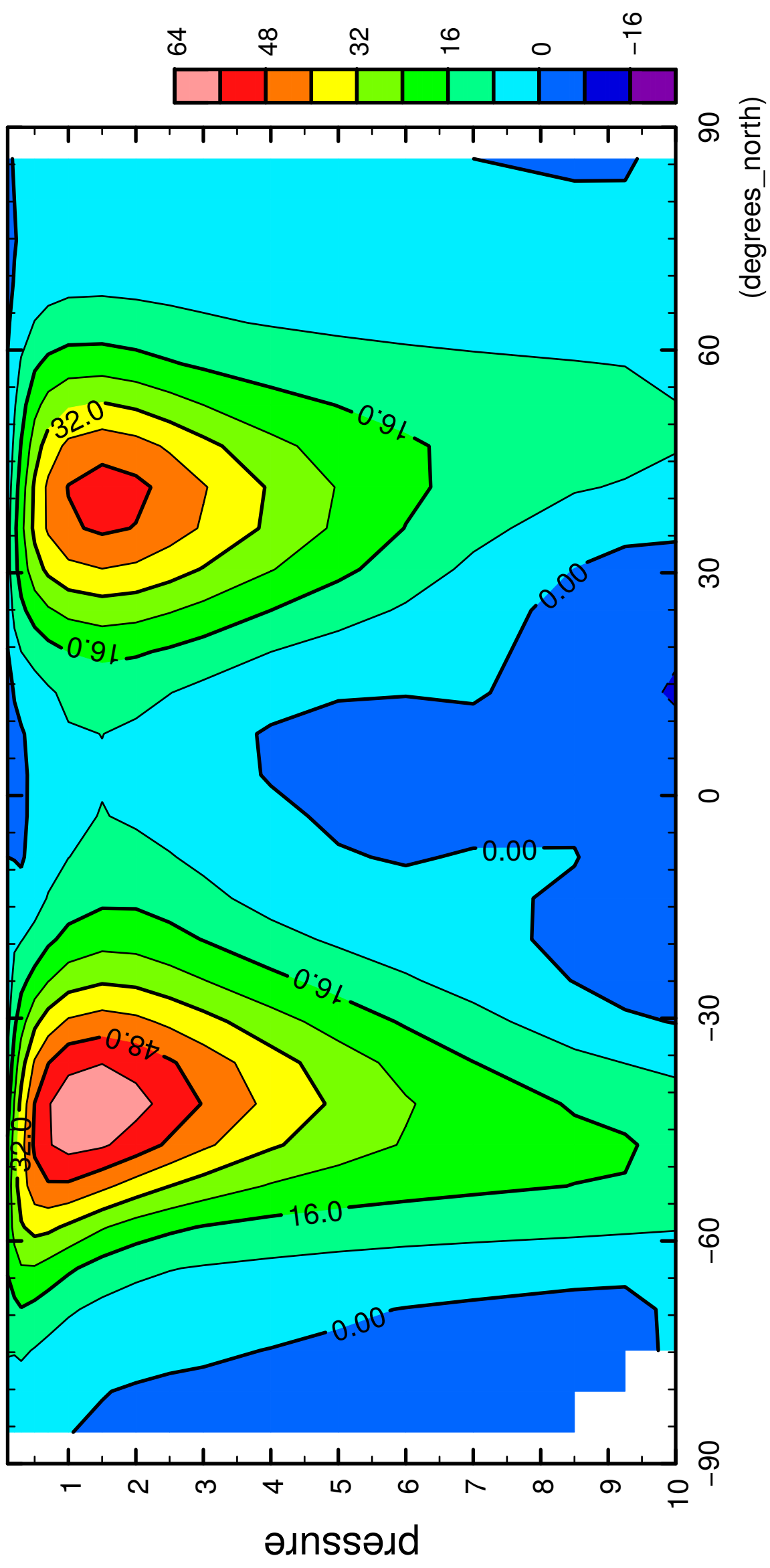
latitude

CONTOUR INTERVAL = 8.000E+00

8/12

U

($\times 10^4$ Pa)



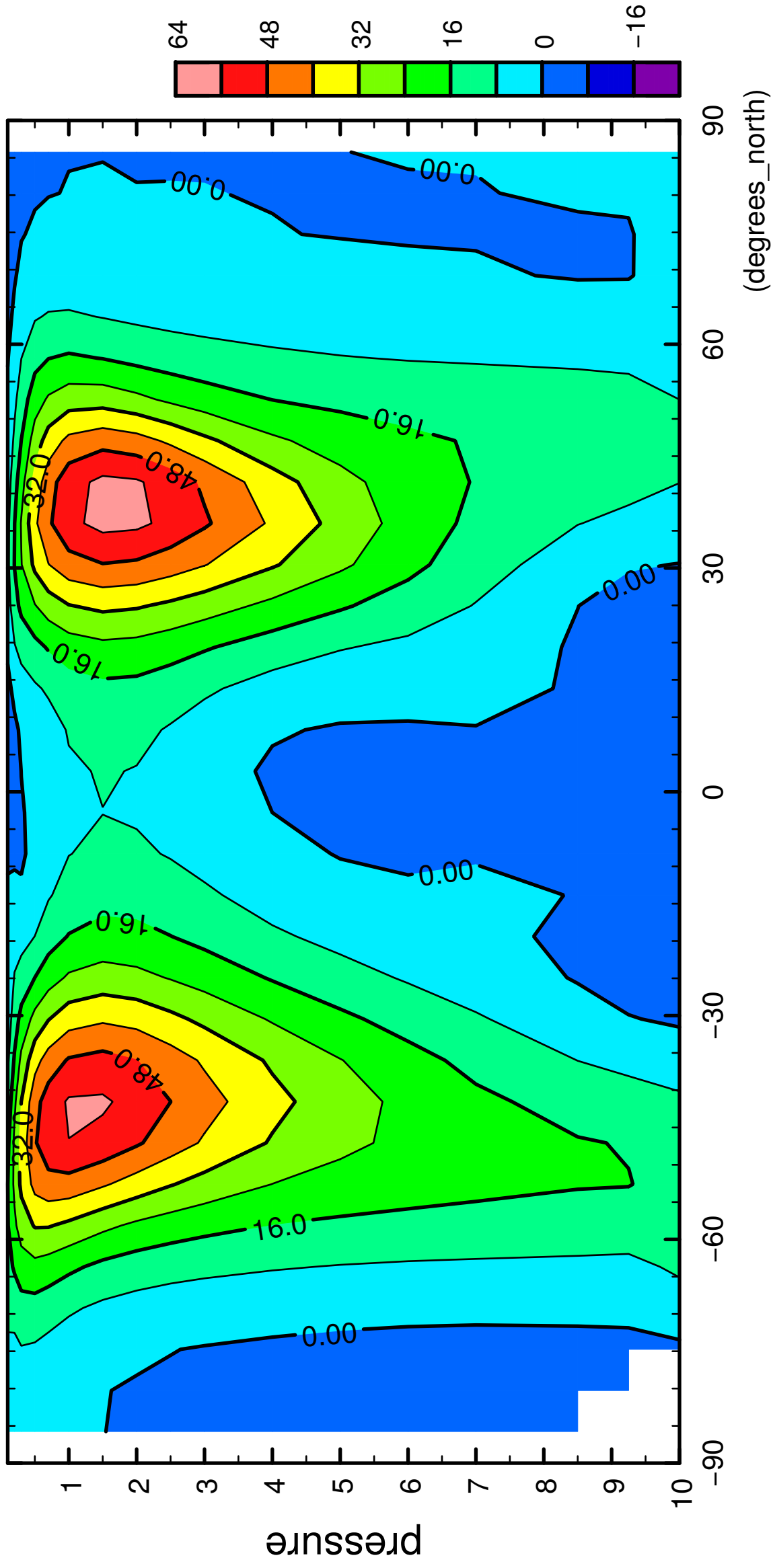
latitude

CONTOUR INTERVAL = 8.000E+00

9/12

U

($\times 10^4$ Pa)



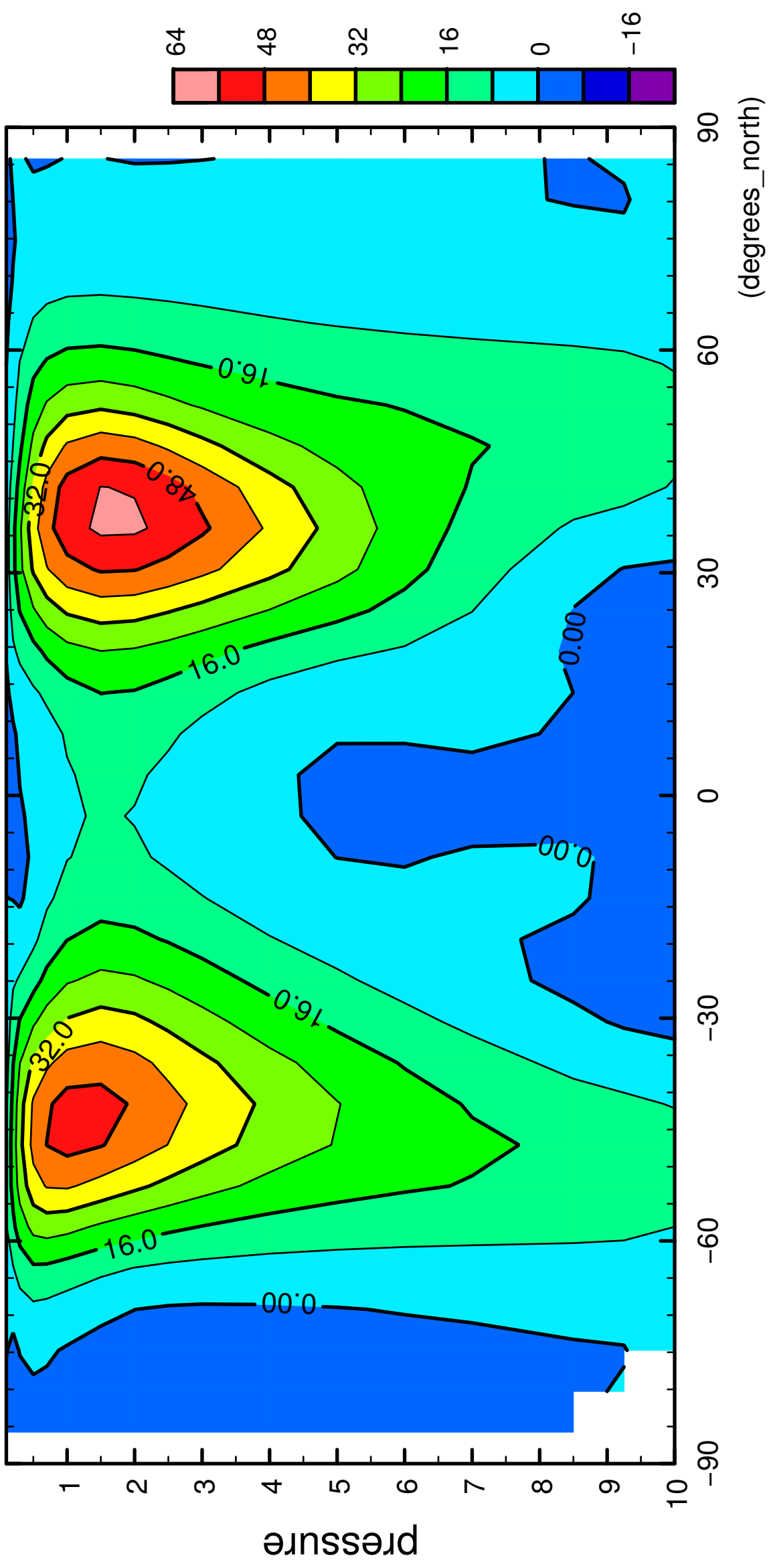
latitude

CONTOUR INTERVAL = 8.000E+00

10/12

U

($\times 10^4$ Pa)



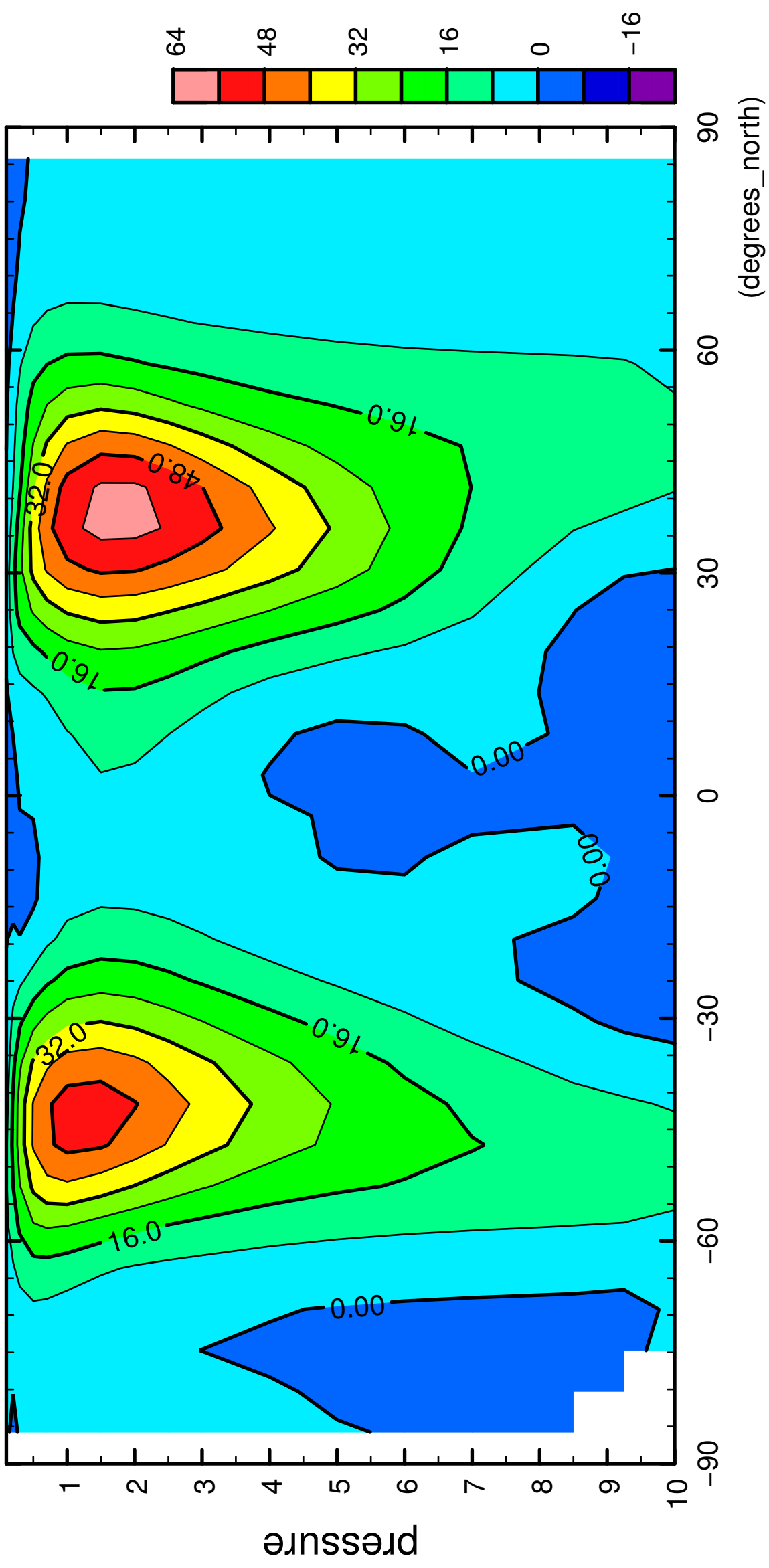
latitude

CONTOUR INTERVAL = 8.000E+00

11/12

U

($\times 10^4$ Pa)



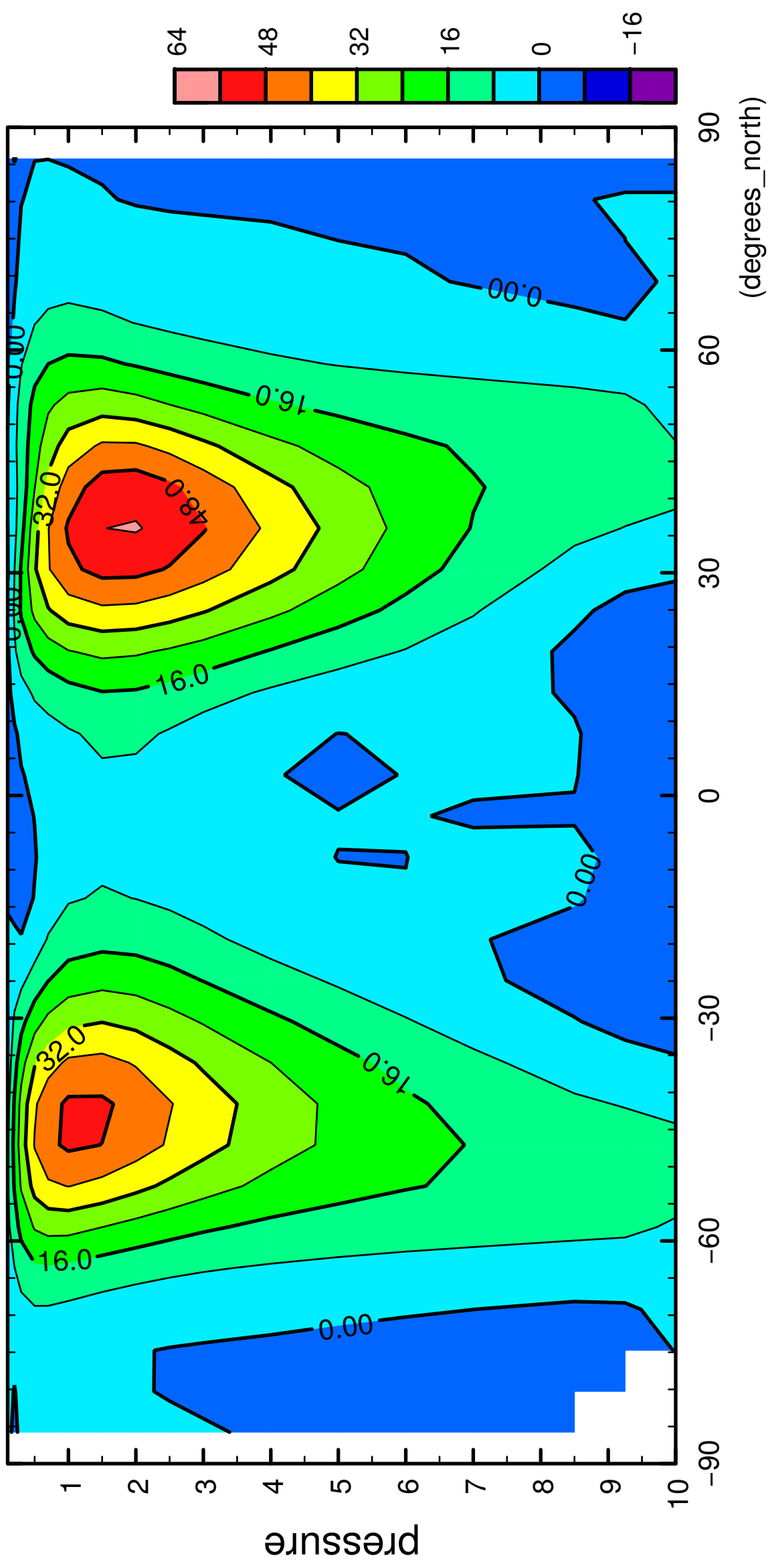
latitude

CONTOUR INTERVAL = 8.000E+00

12/12

U

($\times 10^4$ Pa)



latitude

CONTOUR INTERVAL = 8.000E+00