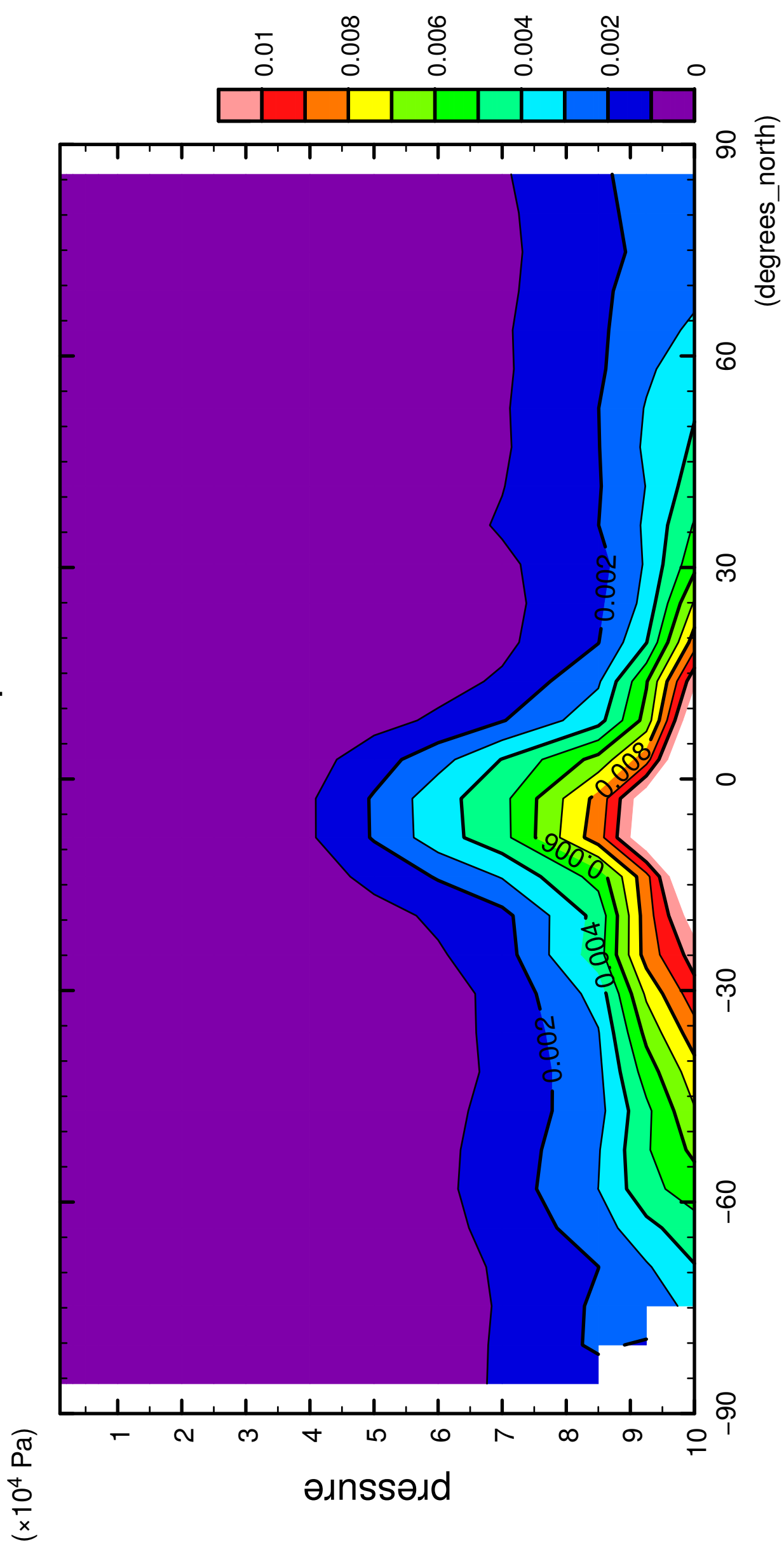


1/12

QH2OVap

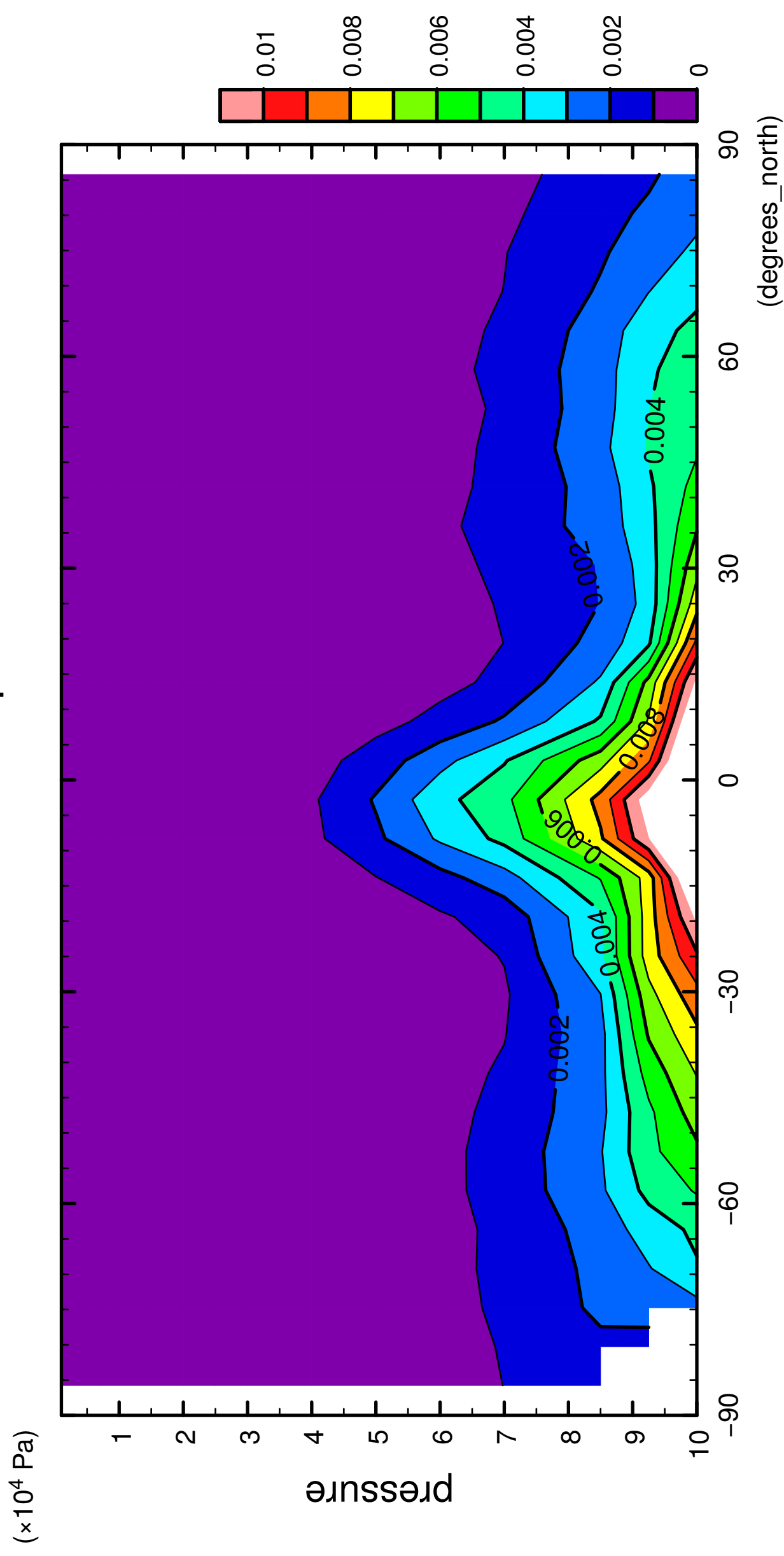


latitude

CONTOUR INTERVAL = 1.000E-03

2/12

QH2OVap

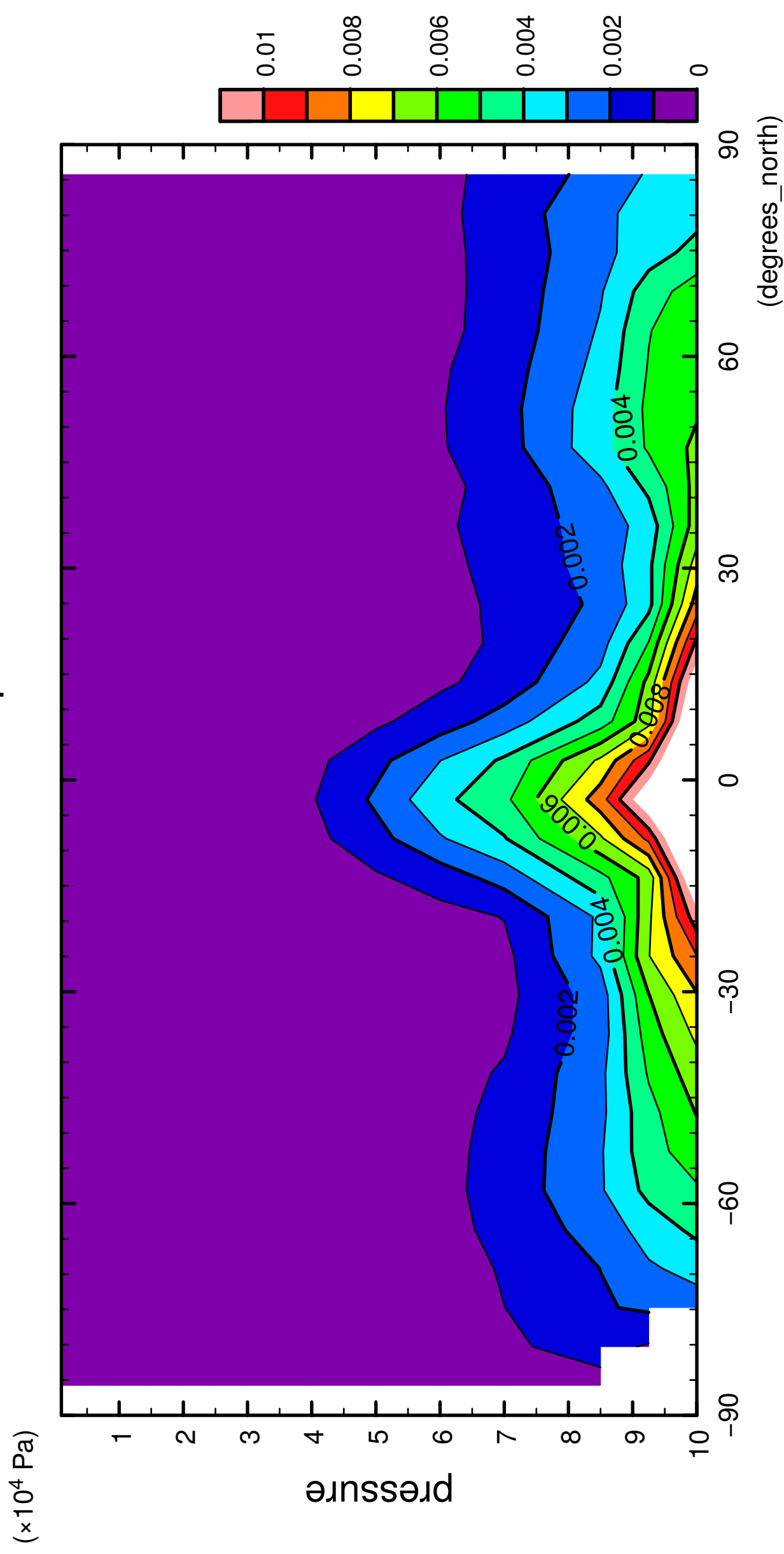


latitude

CONTOUR INTERVAL = 1.000E-03

3/12

QH2OVap

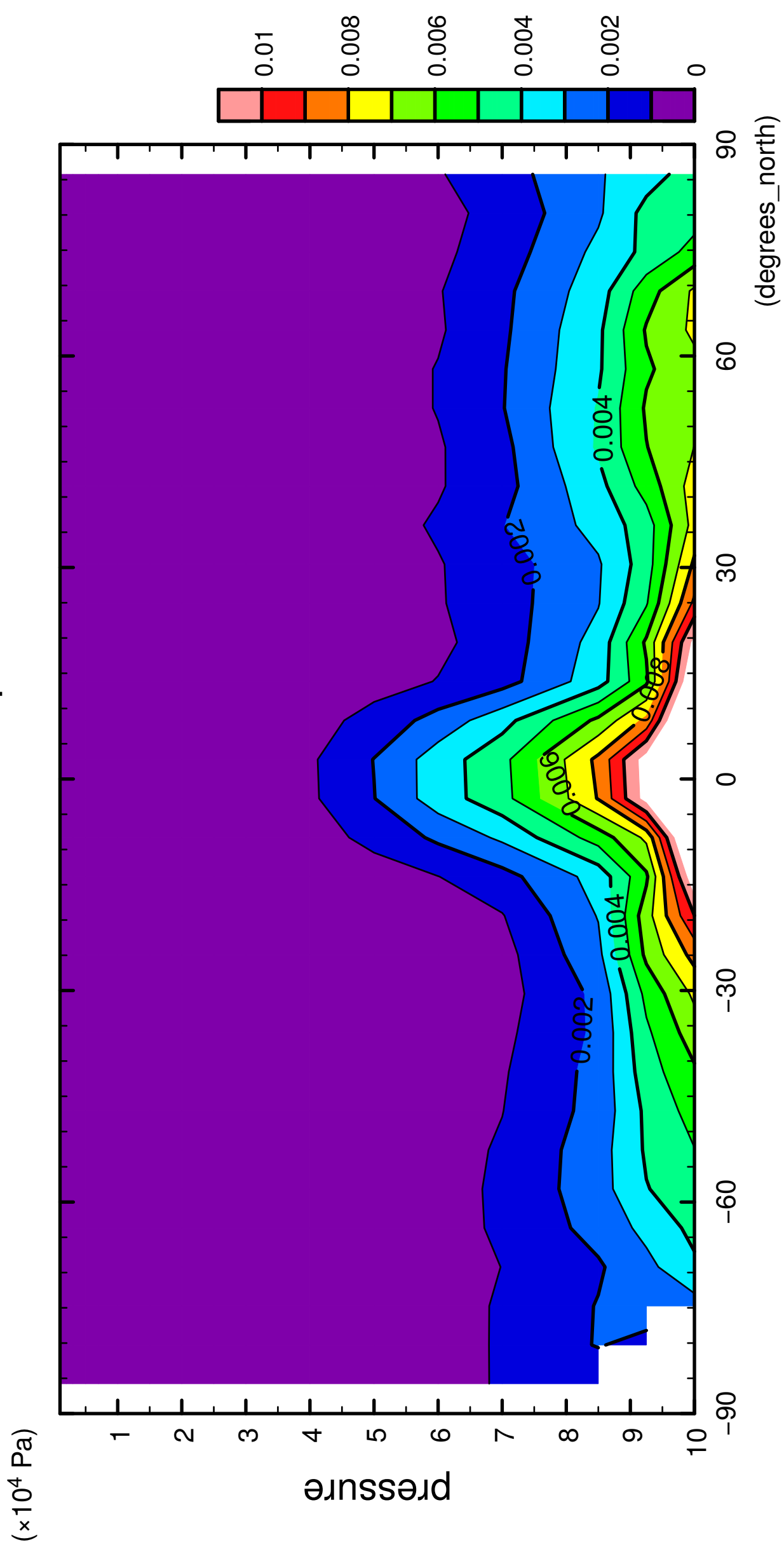


latitude

CONTOUR INTERVAL = 1.000E-03

4/12

QH2OVap

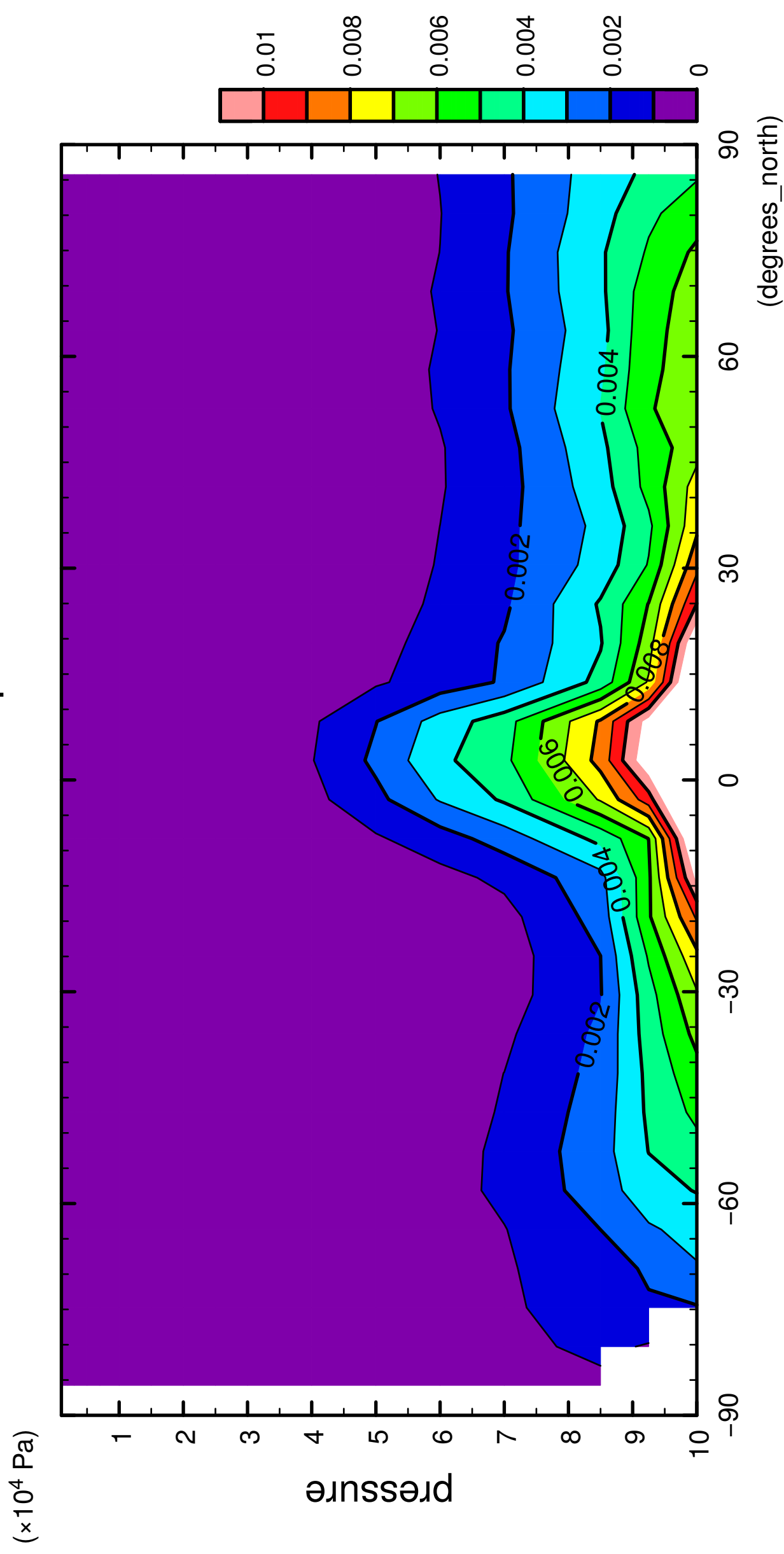


latitude

CONTOUR INTERVAL = 1.000E-03

5/12

QH2OVap

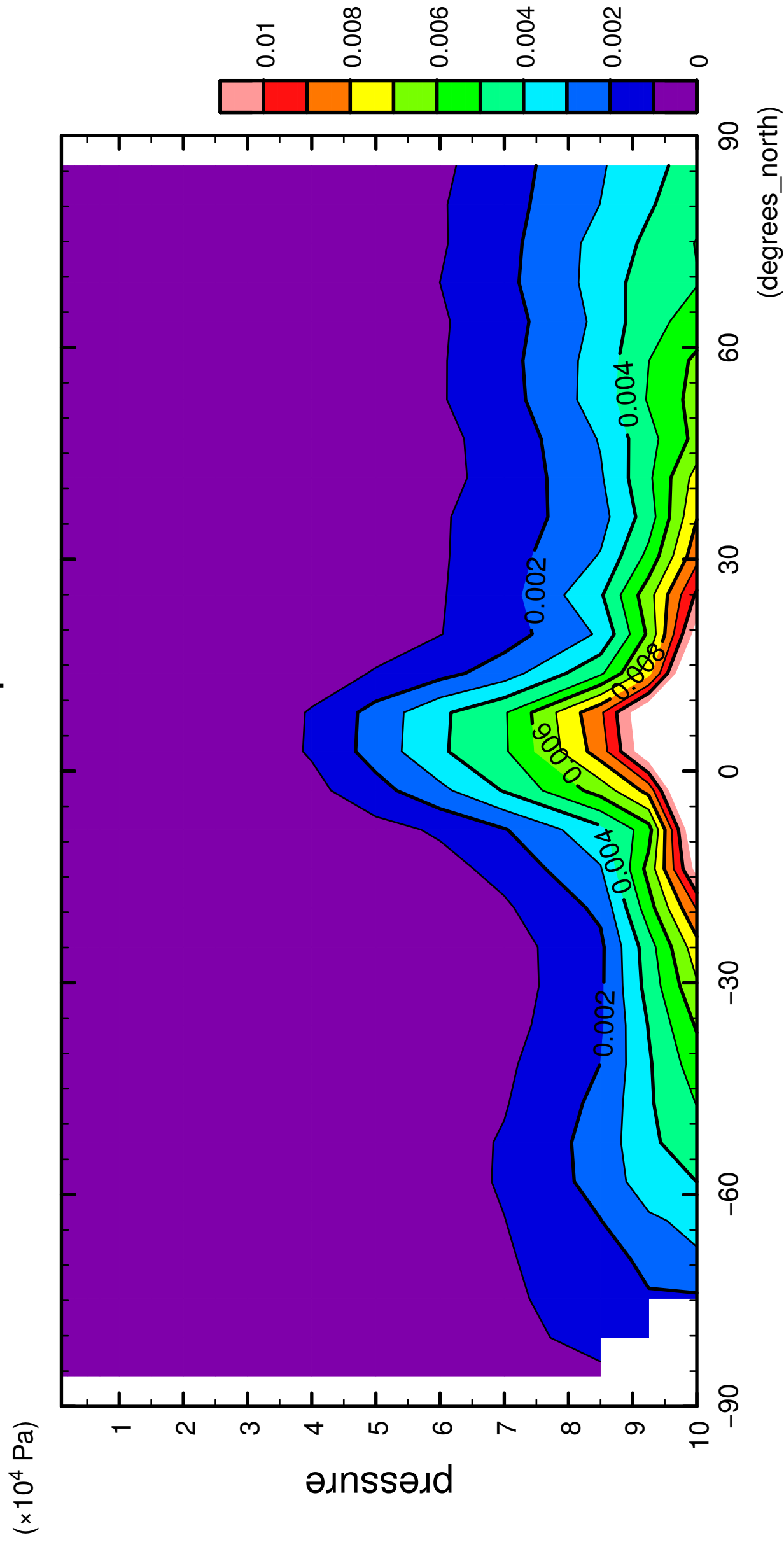


latitude

CONTOUR INTERVAL = 1.000E-03

6/12

QH2OVap

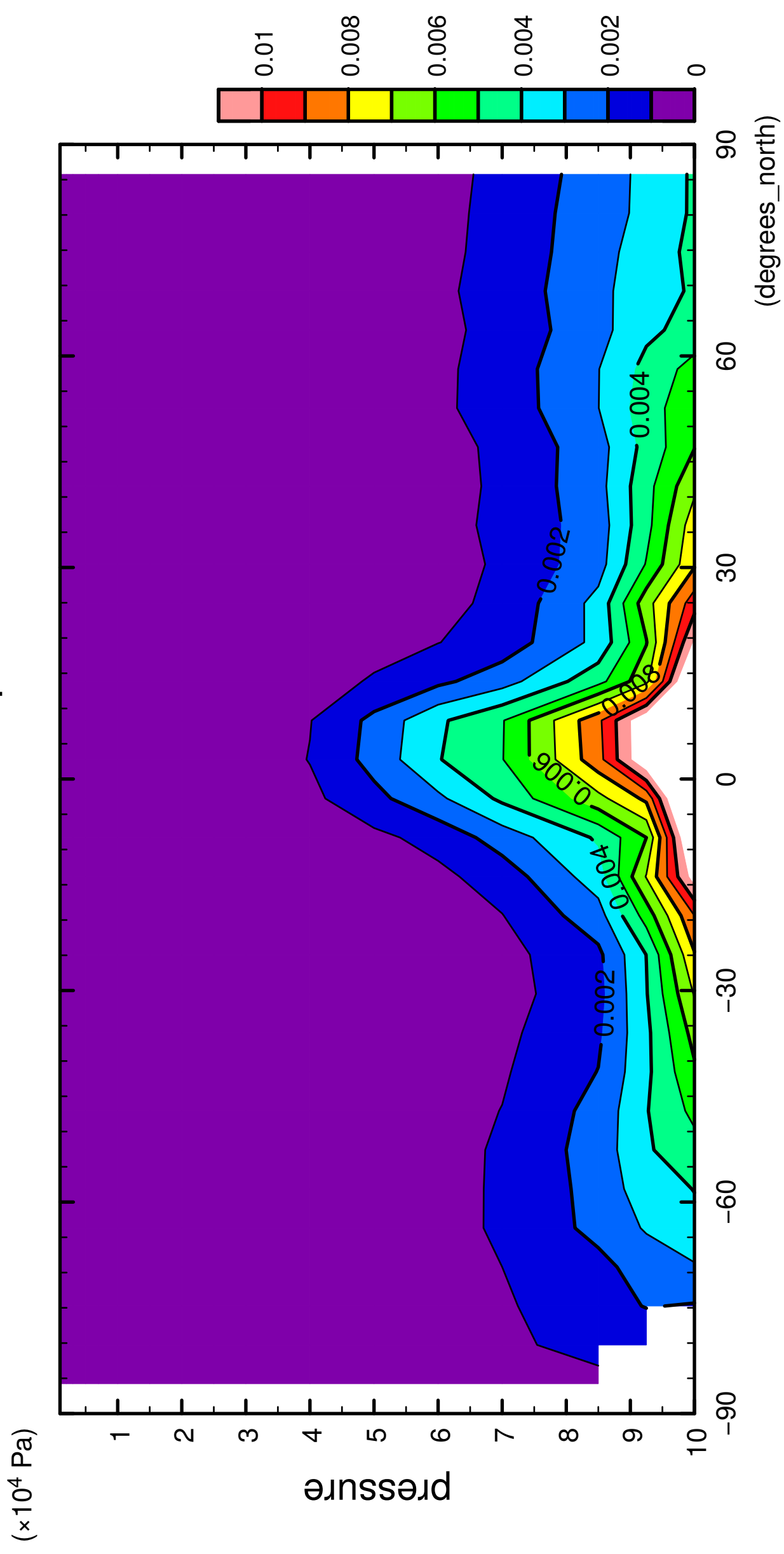


latitude

CONTOUR INTERVAL = 1.000E-03

7/12

QH2OVap

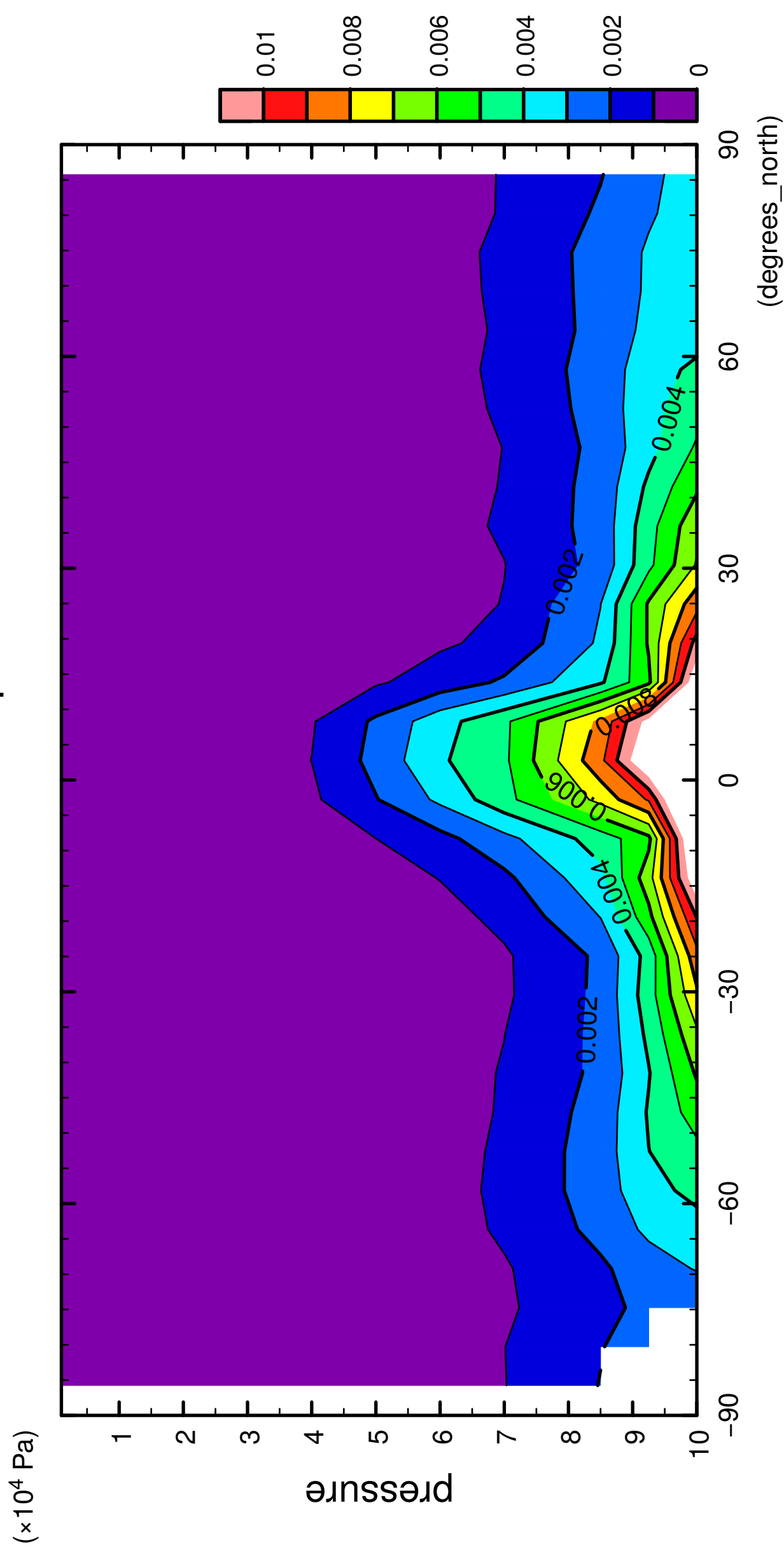


latitude

CONTOUR INTERVAL = 1.000E-03

8/12

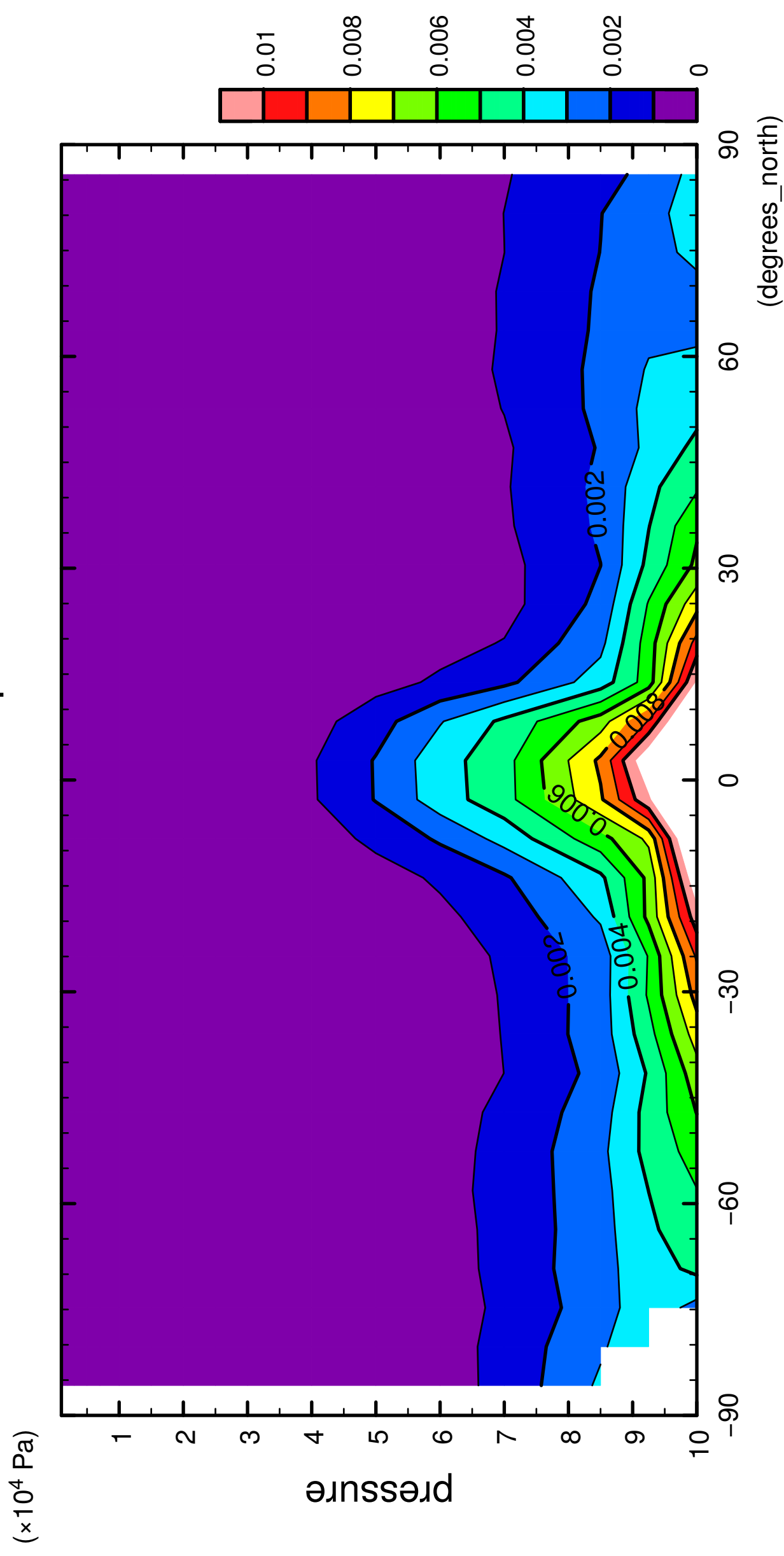
QH2OVap



CONTOUR INTERVAL = 1.000E-03

9/12

QH2OVap

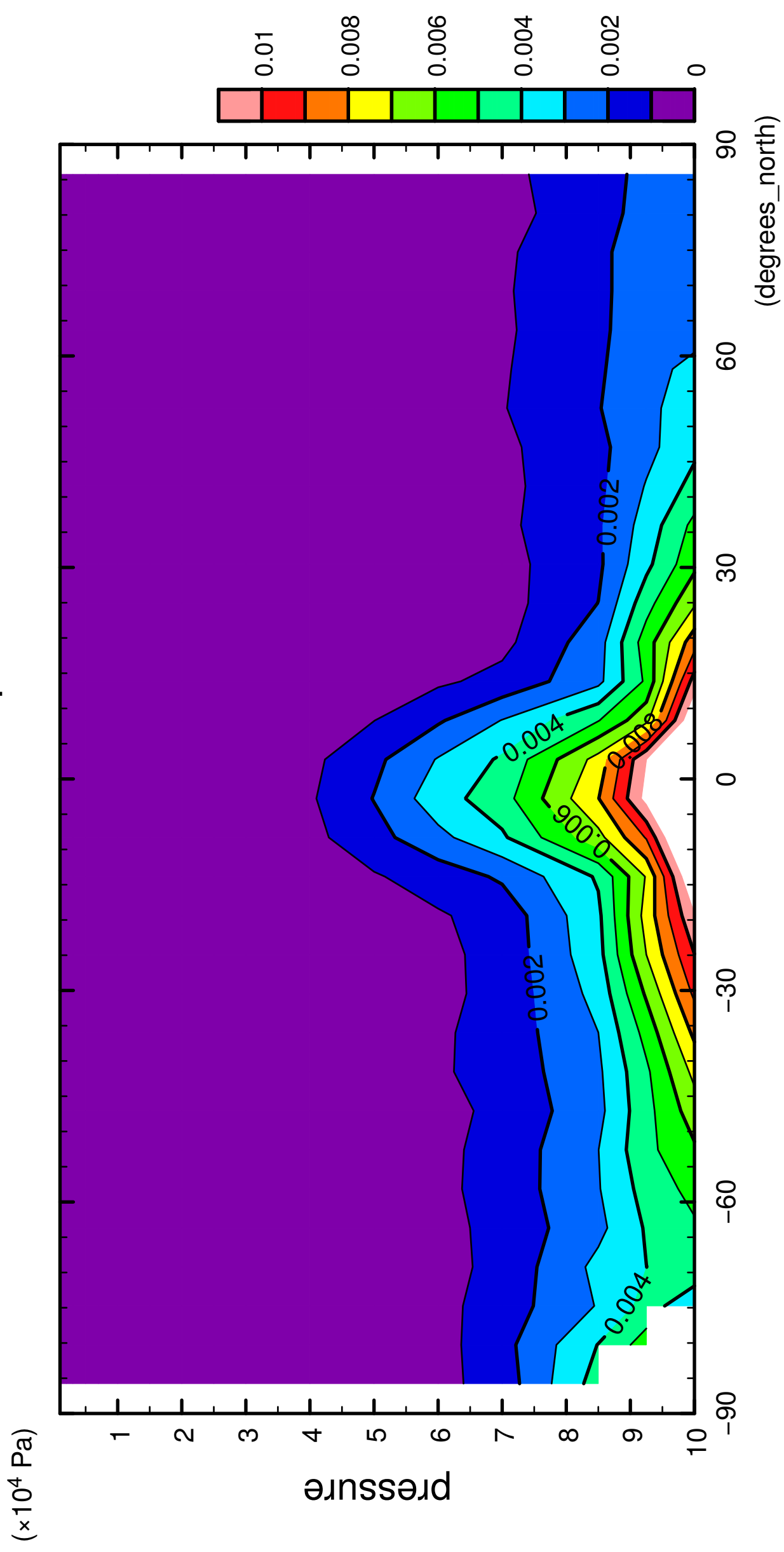


latitude

CONTOUR INTERVAL = 1.000E-03

10/12

QH2OVap



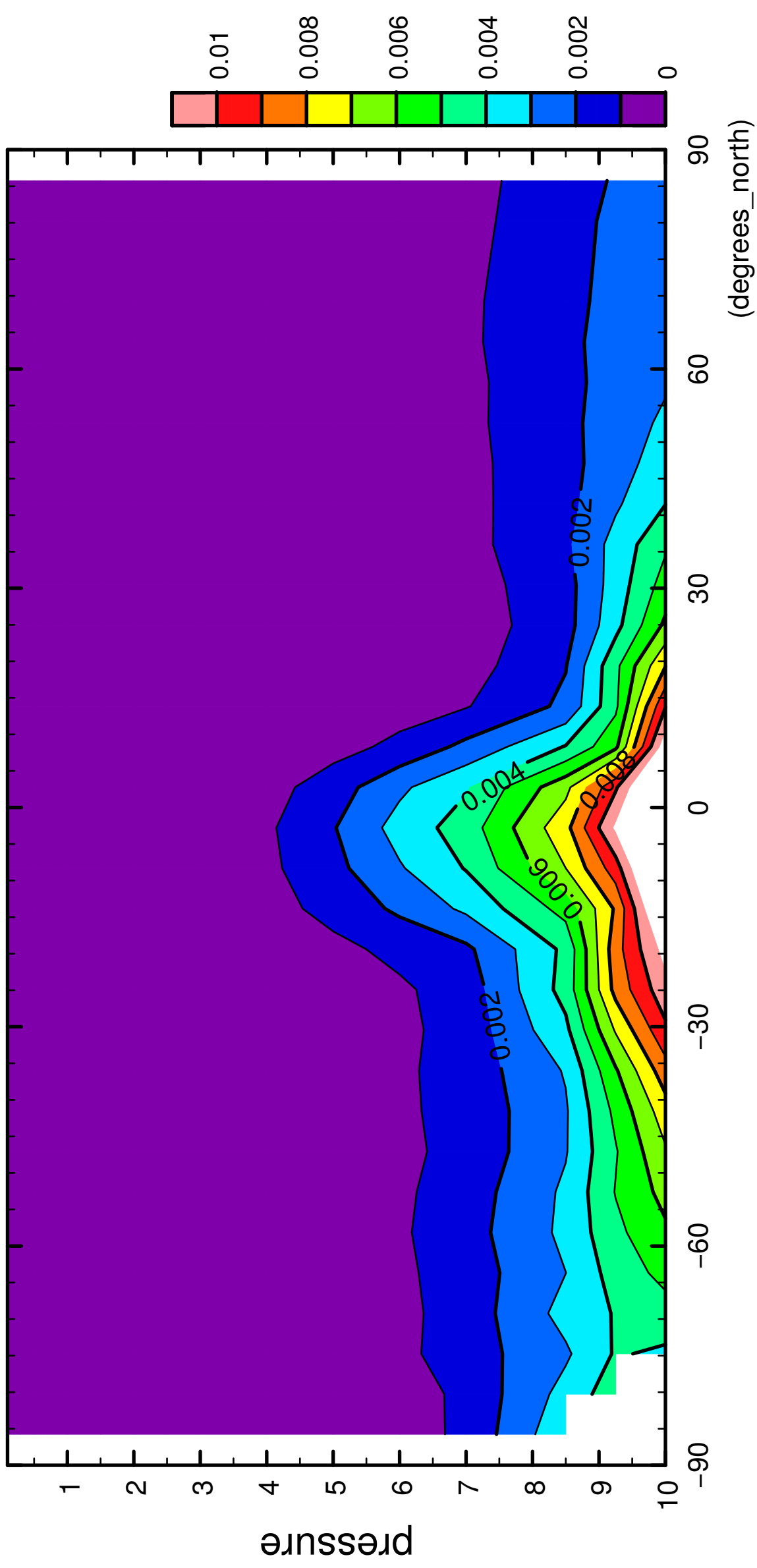
latitude

CONTOUR INTERVAL = 1.000E-03

11/12

QH2OVap

($\times 10^4$ Pa)

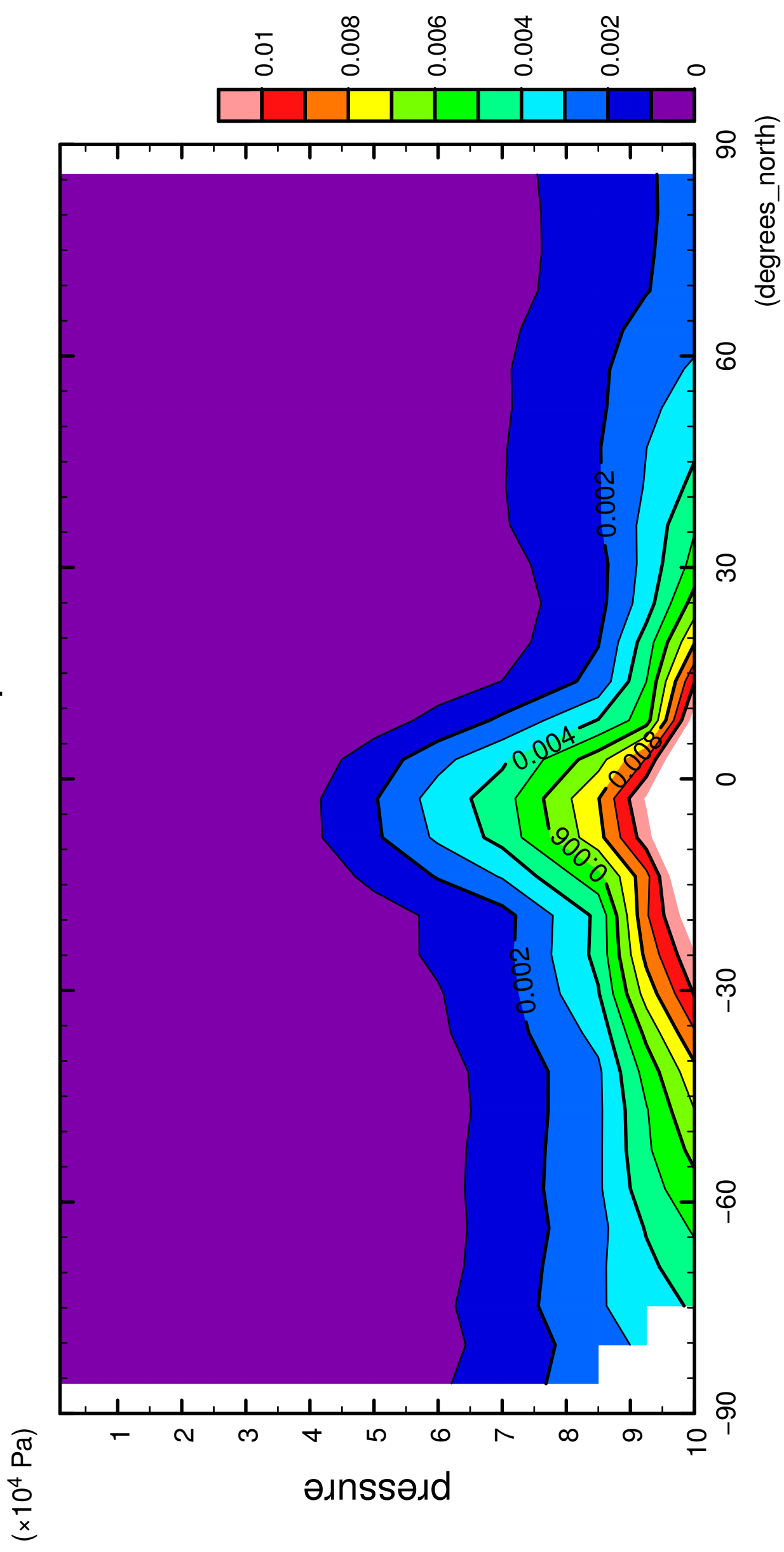


latitude

CONTOUR INTERVAL = 1.000E-03

12/12

QH2OVap



latitude

CONTOUR INTERVAL = 1.000E-03