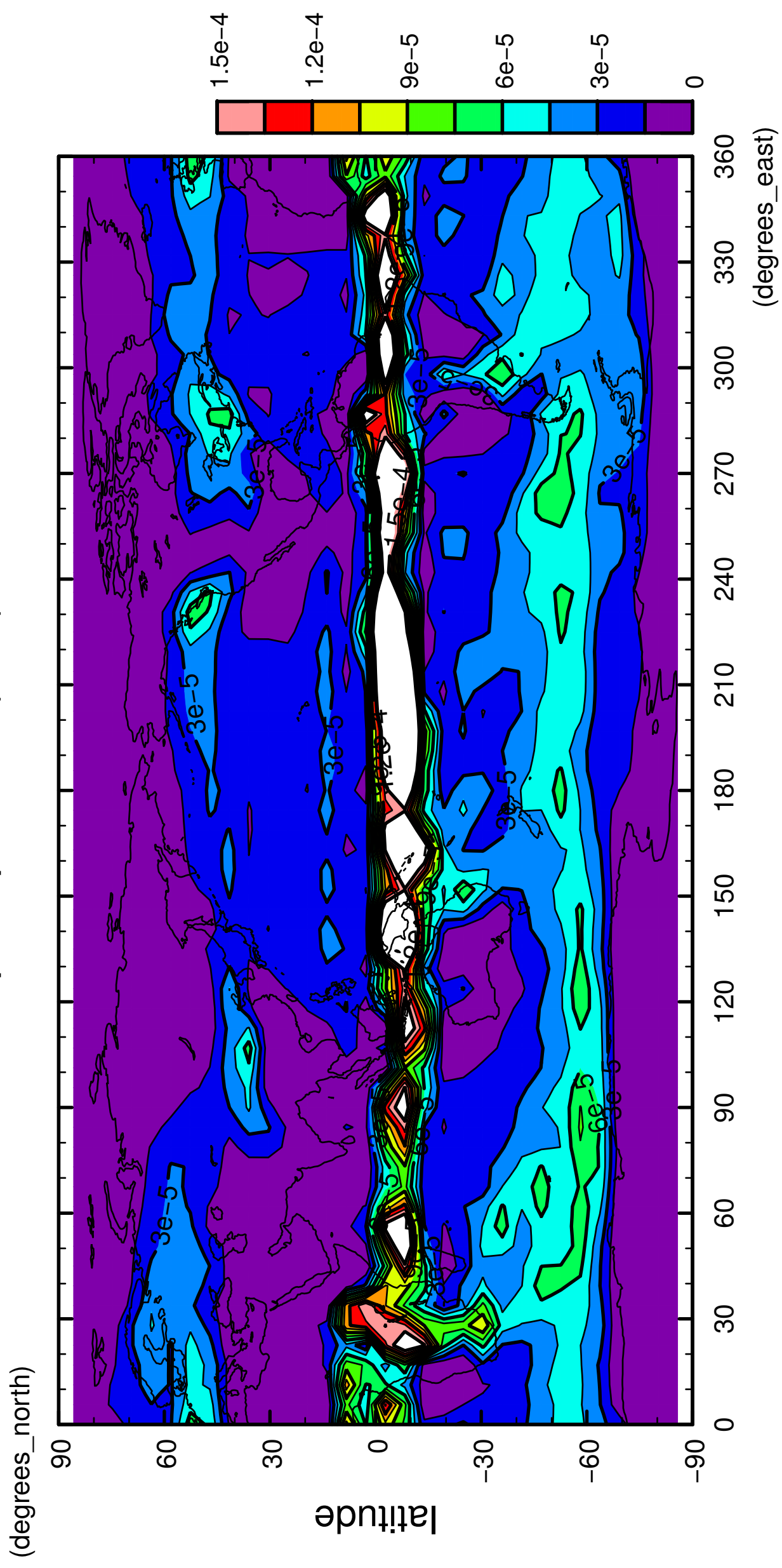


1/12

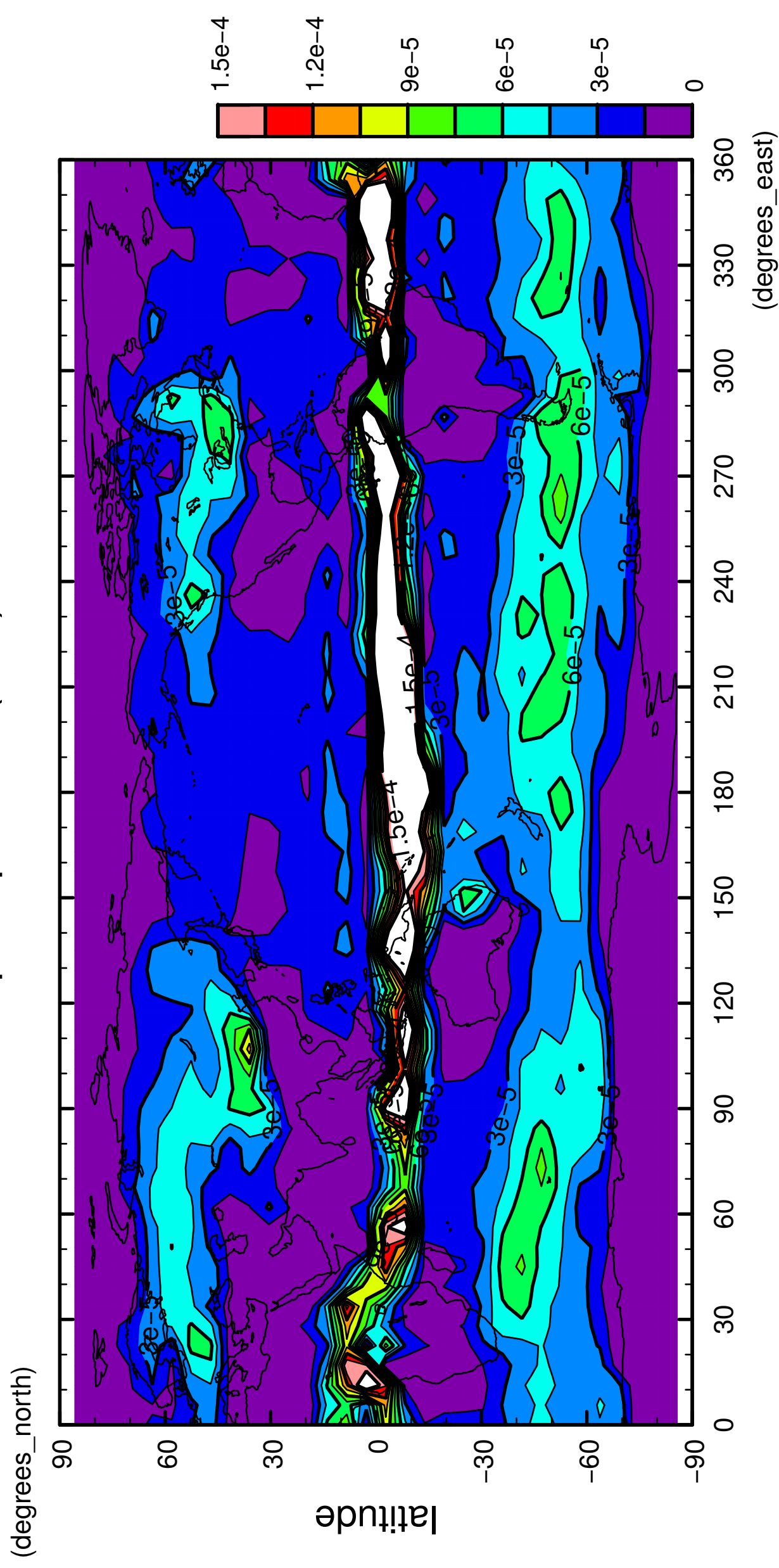
precipitation (rain)



longitude
CONTOUR INTERVAL = 1.500E-05

2/12

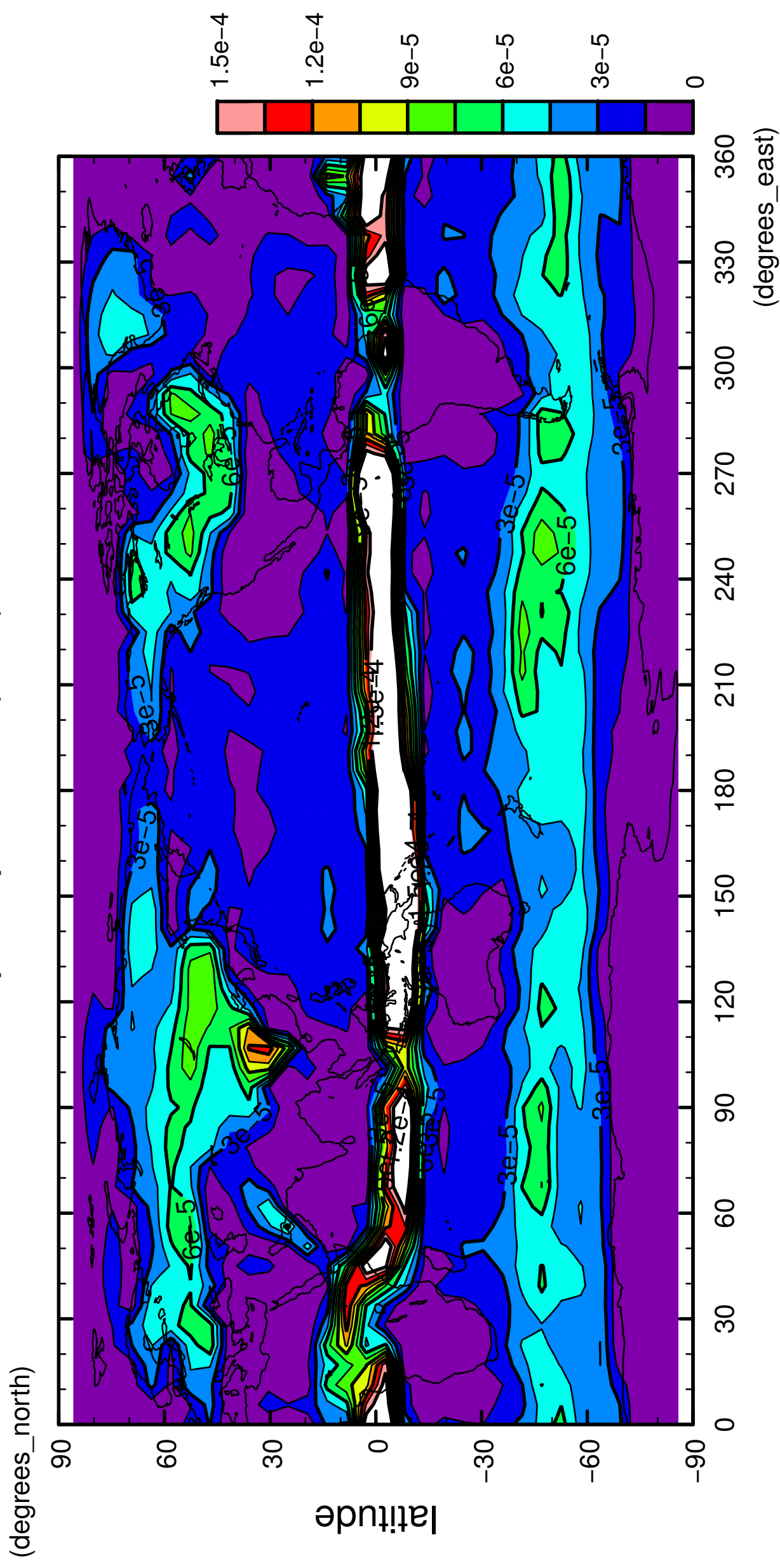
precipitation (rain)



longitude
CONTOUR INTERVAL = 1.500E-05

3/12

precipitation (rain)

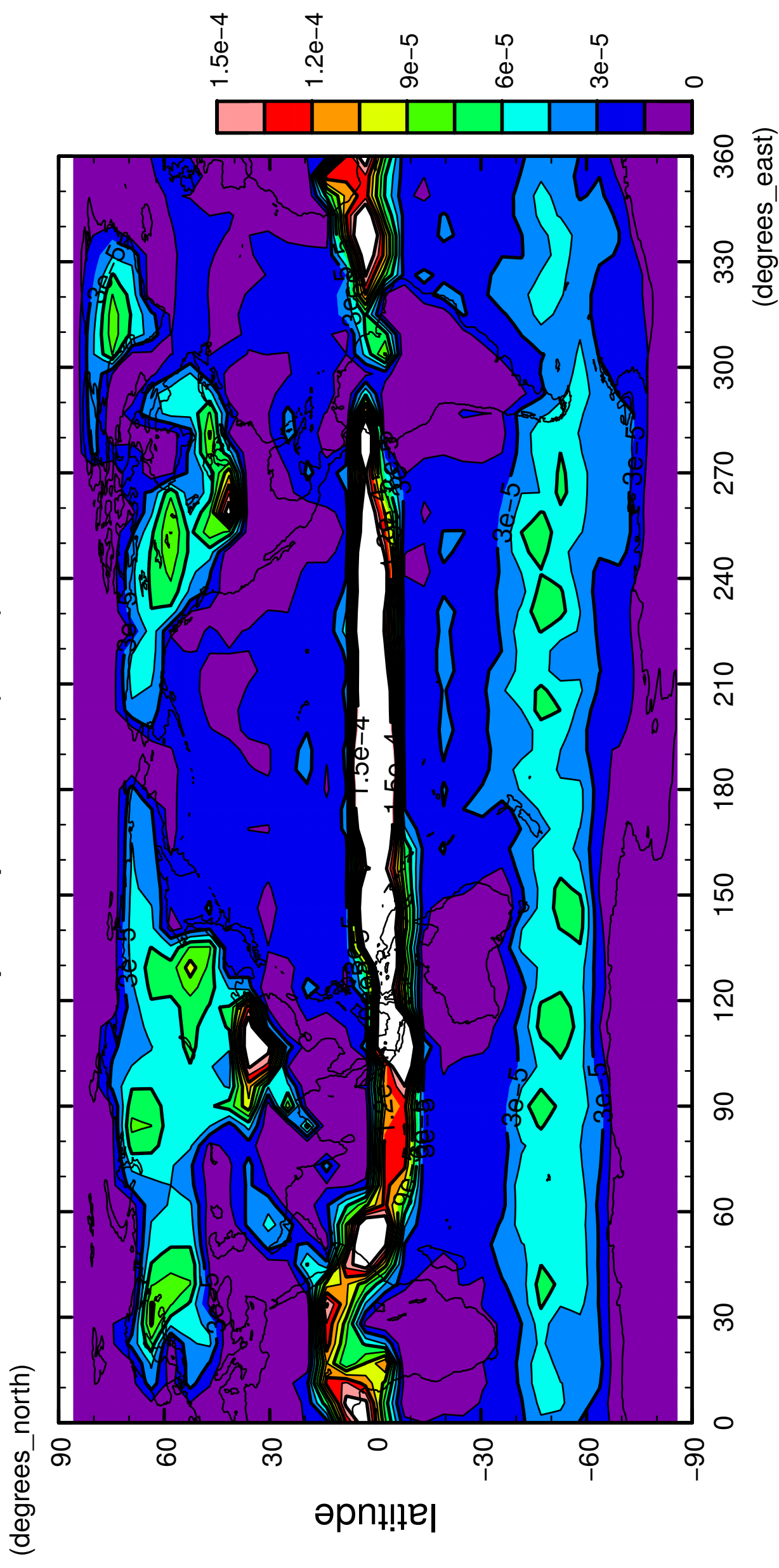


longitude

CONTOUR INTERVAL = 1.500E-05

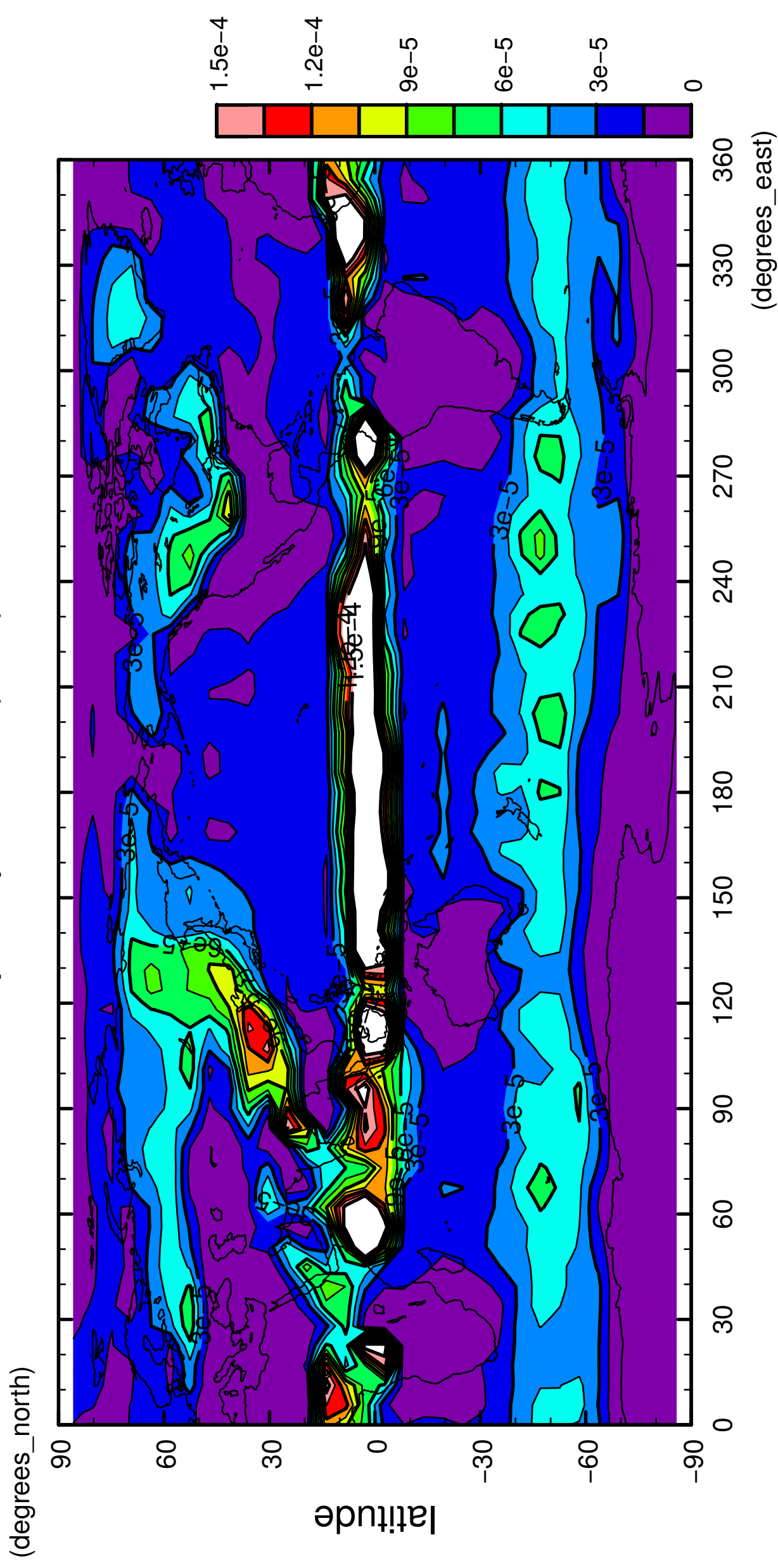
4/12

precipitation (rain)



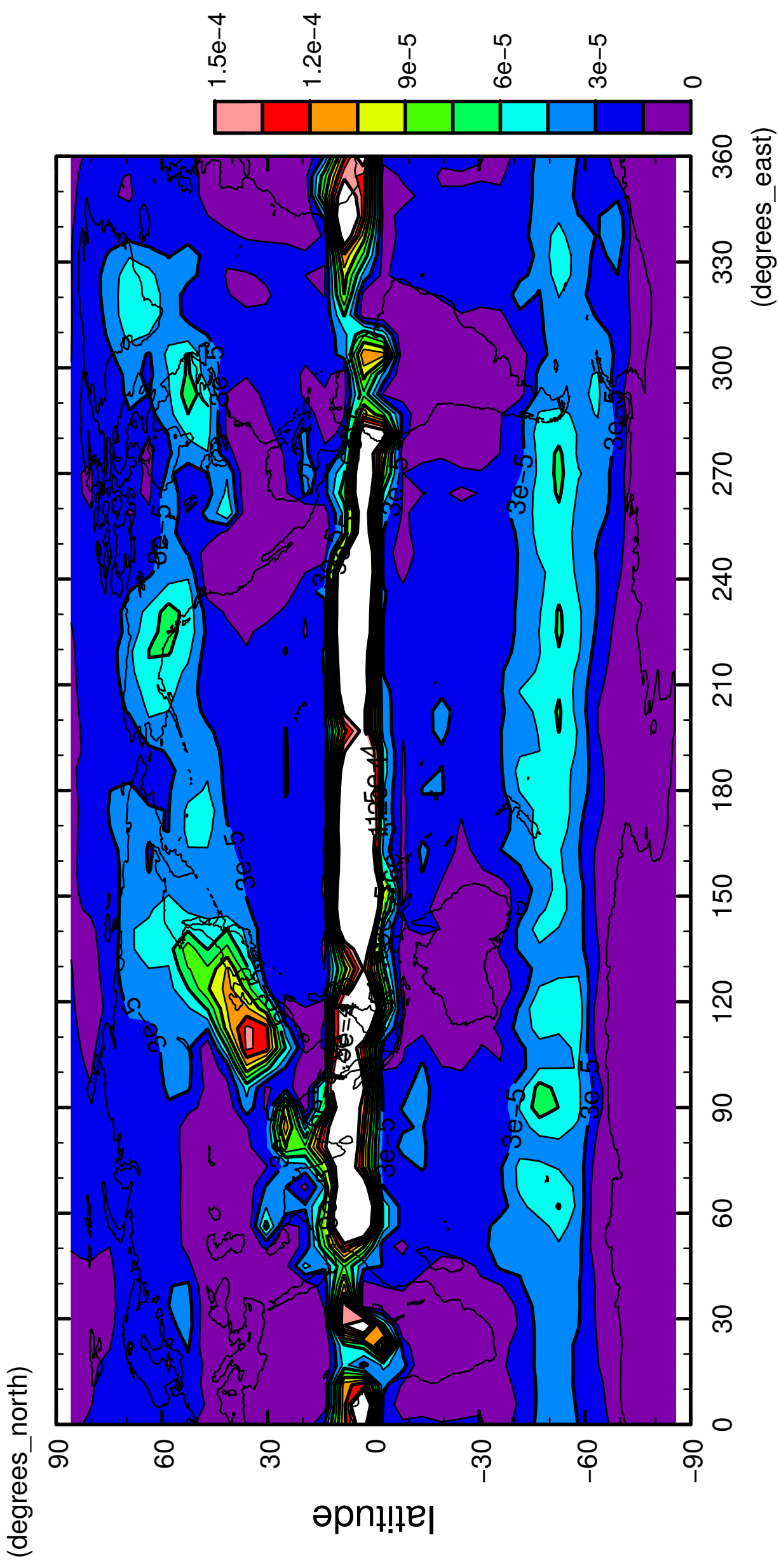
5/12

precipitation (rain)



6/12

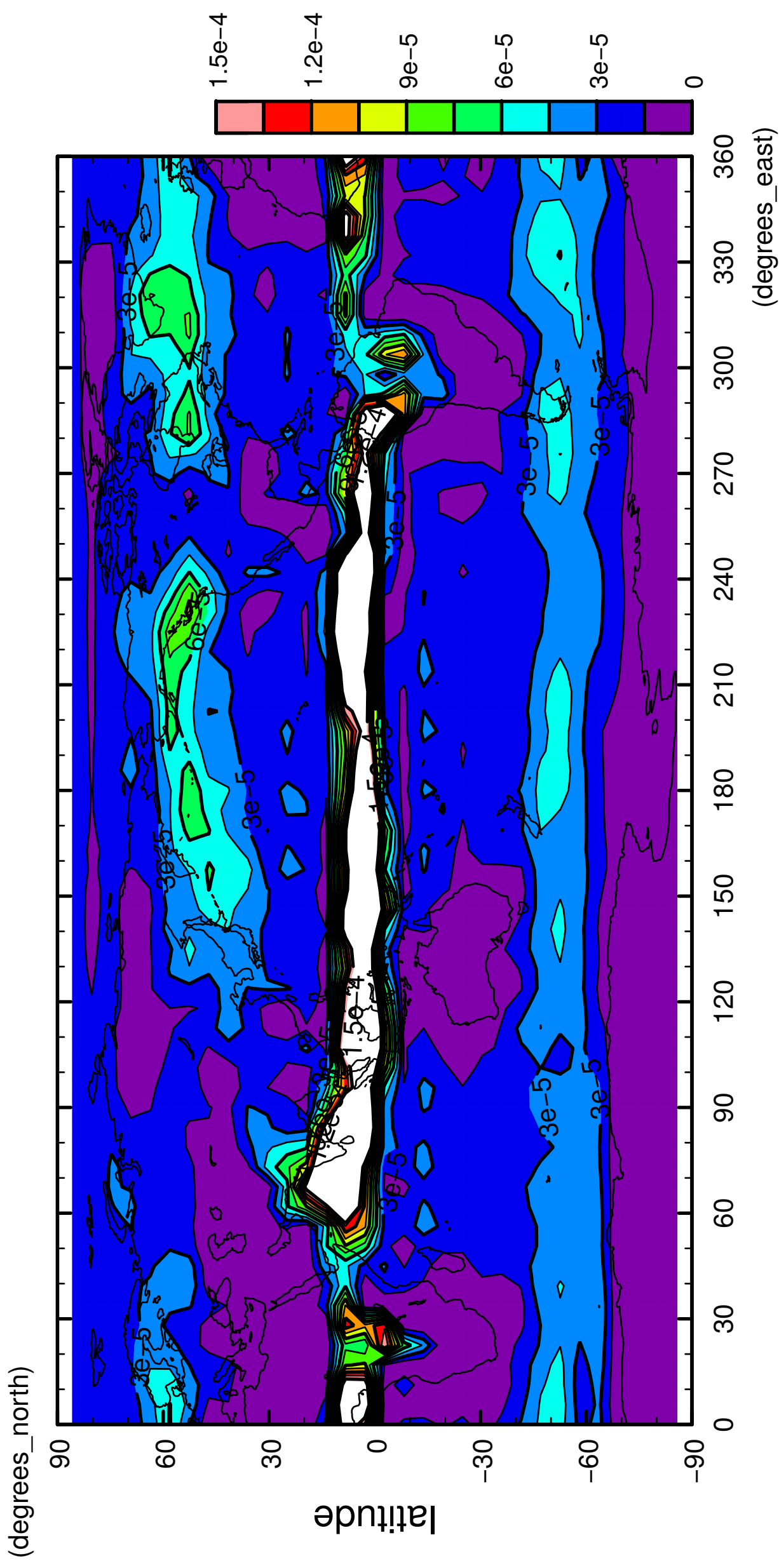
precipitation (rain)



longitude
CONTOUR INTERVAL = 1.500E-05

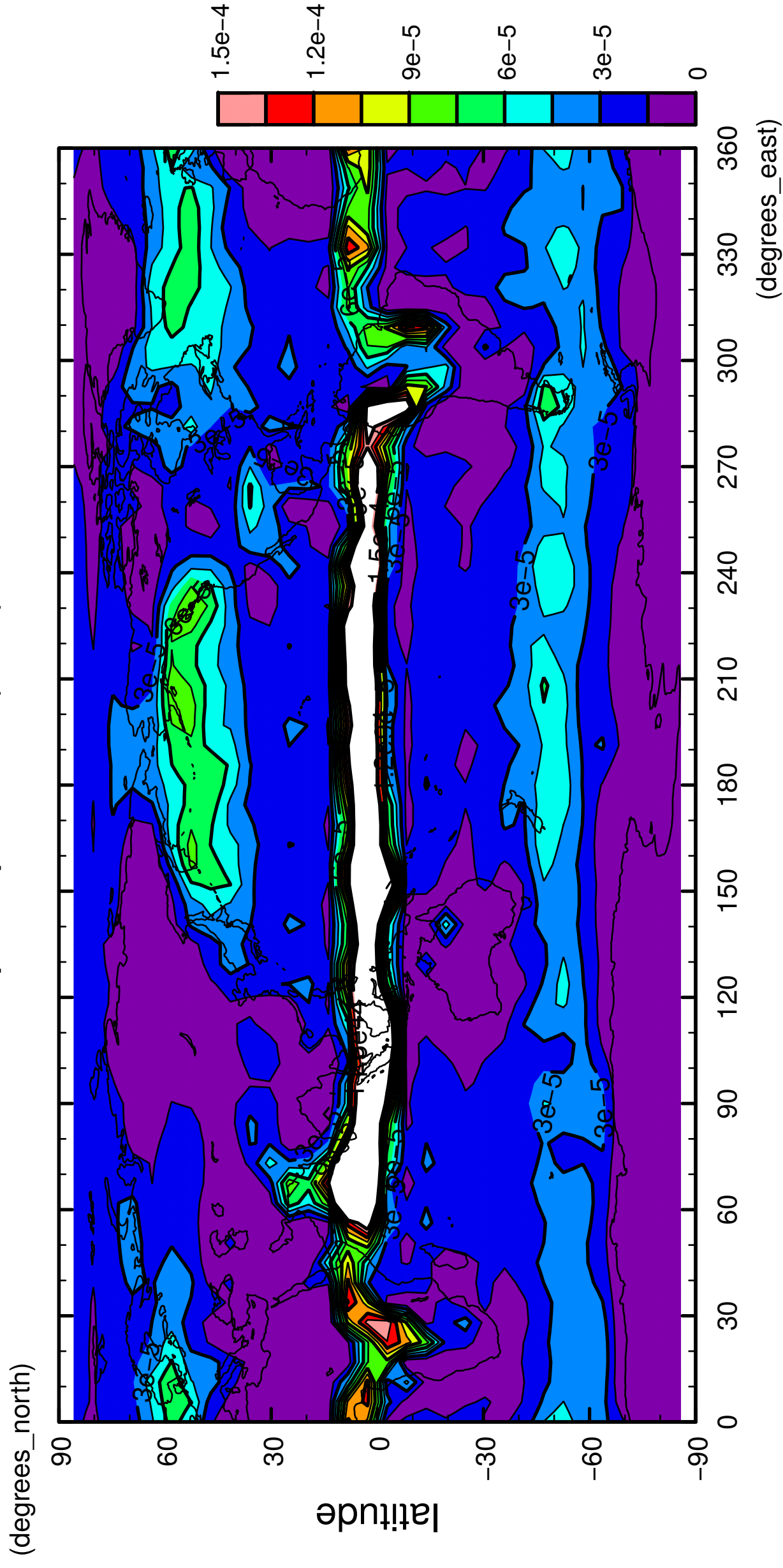
7/12

precipitation (rain)



8/12

precipitation (rain)

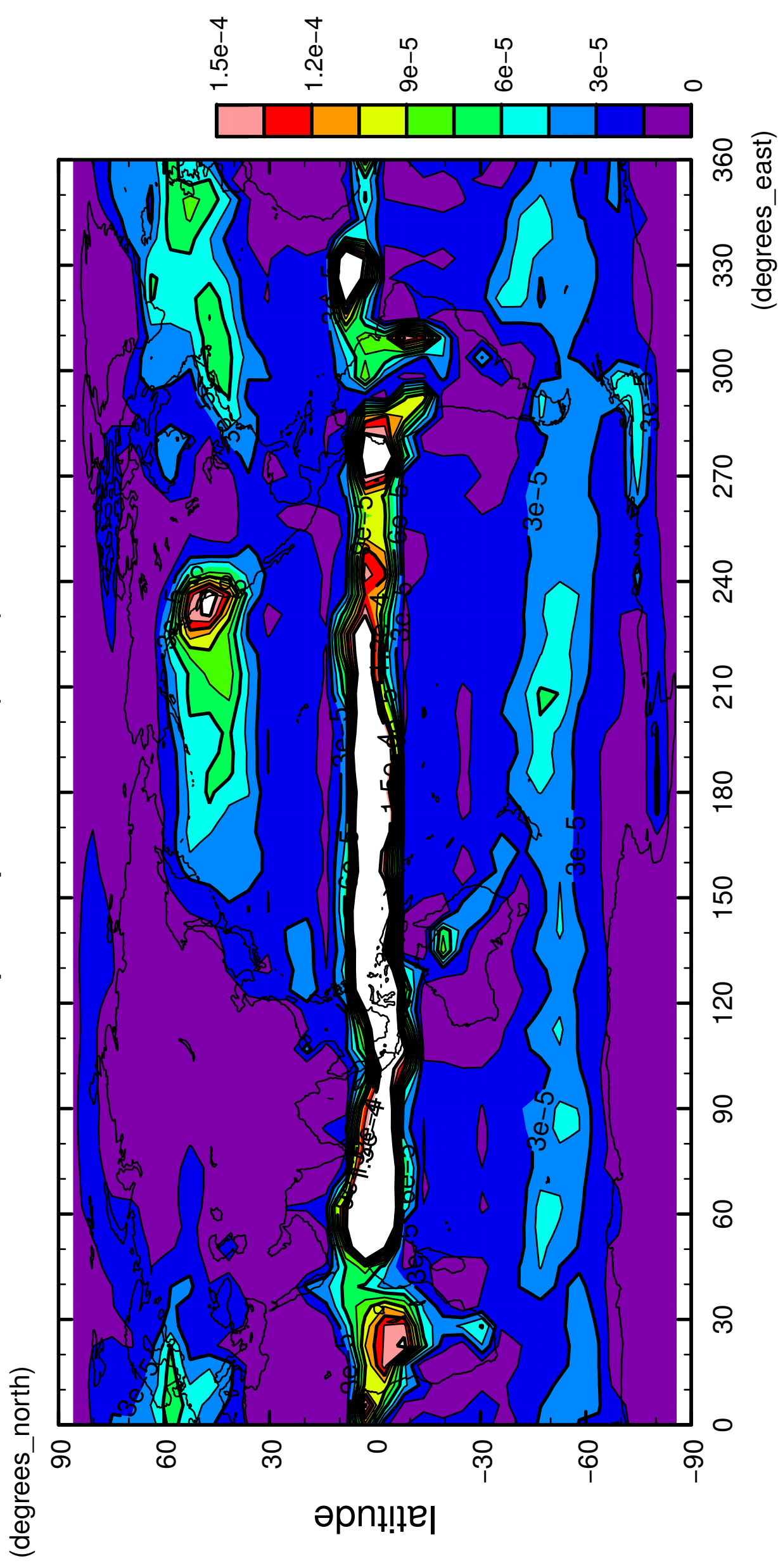


longitude

CONTOUR INTERVAL = 1.500E-05

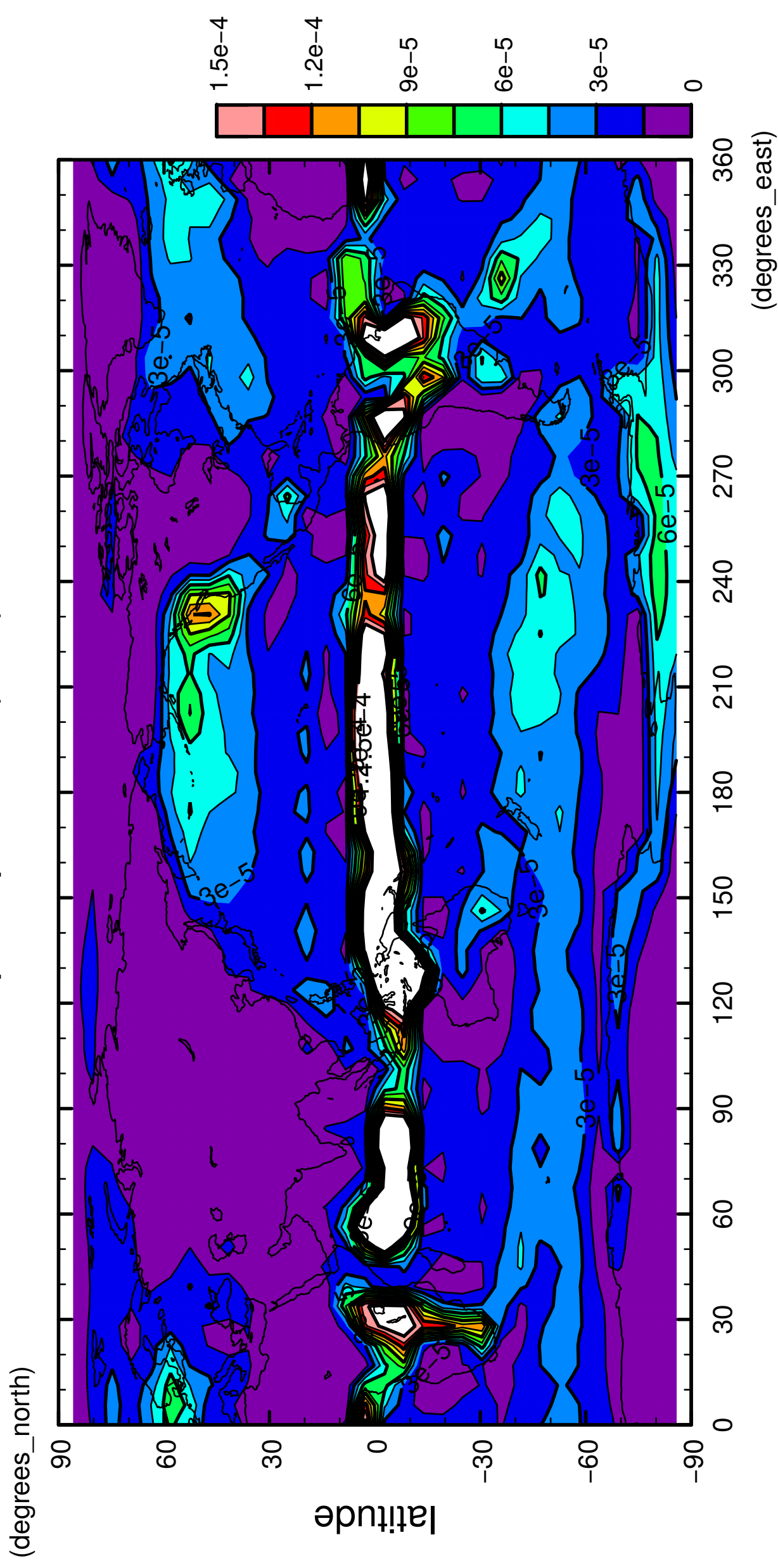
9/12

precipitation (rain)



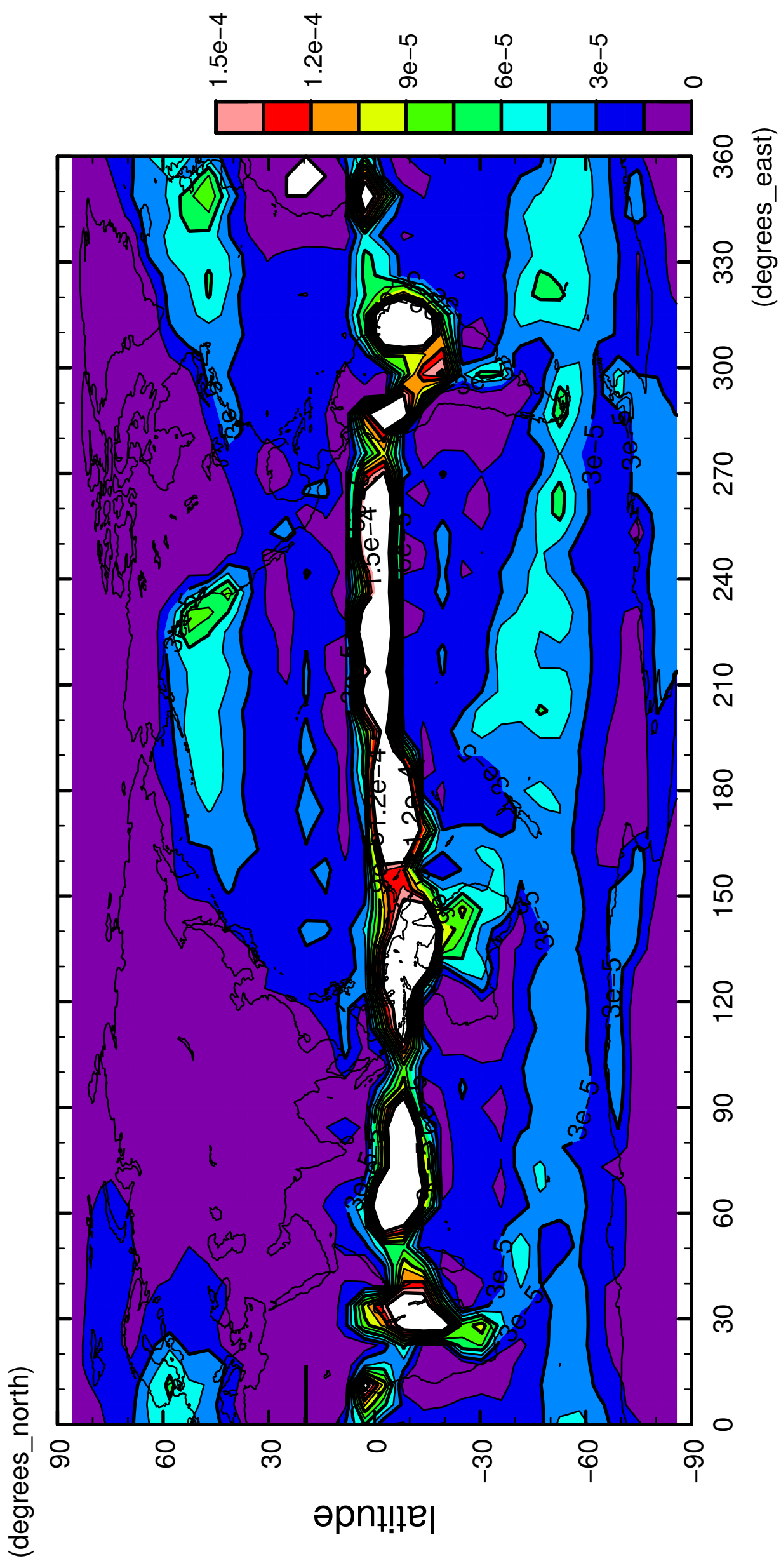
10/12

precipitation (rain)



11/12

precipitation (rain)



12/12

precipitation (rain)

