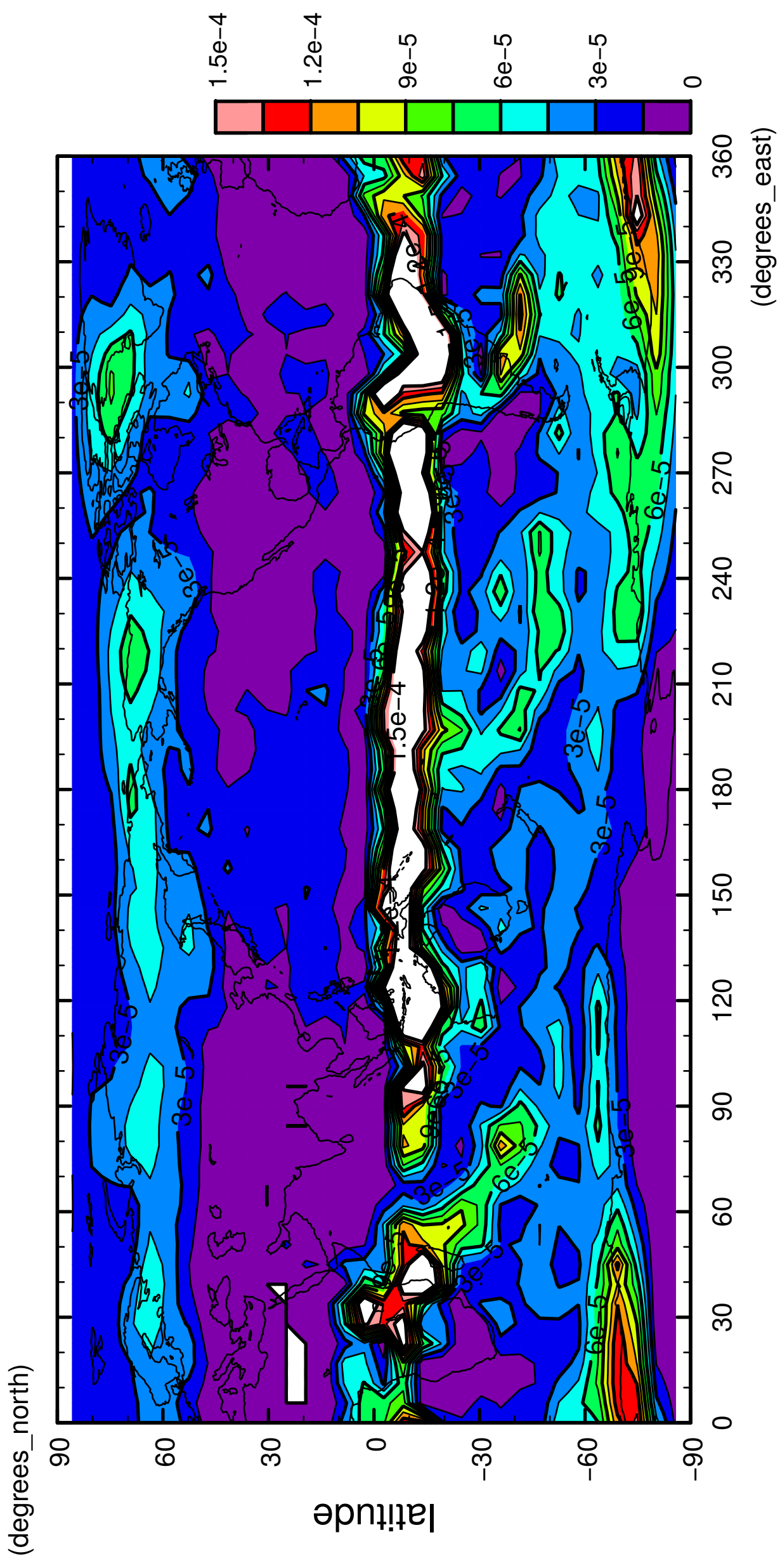


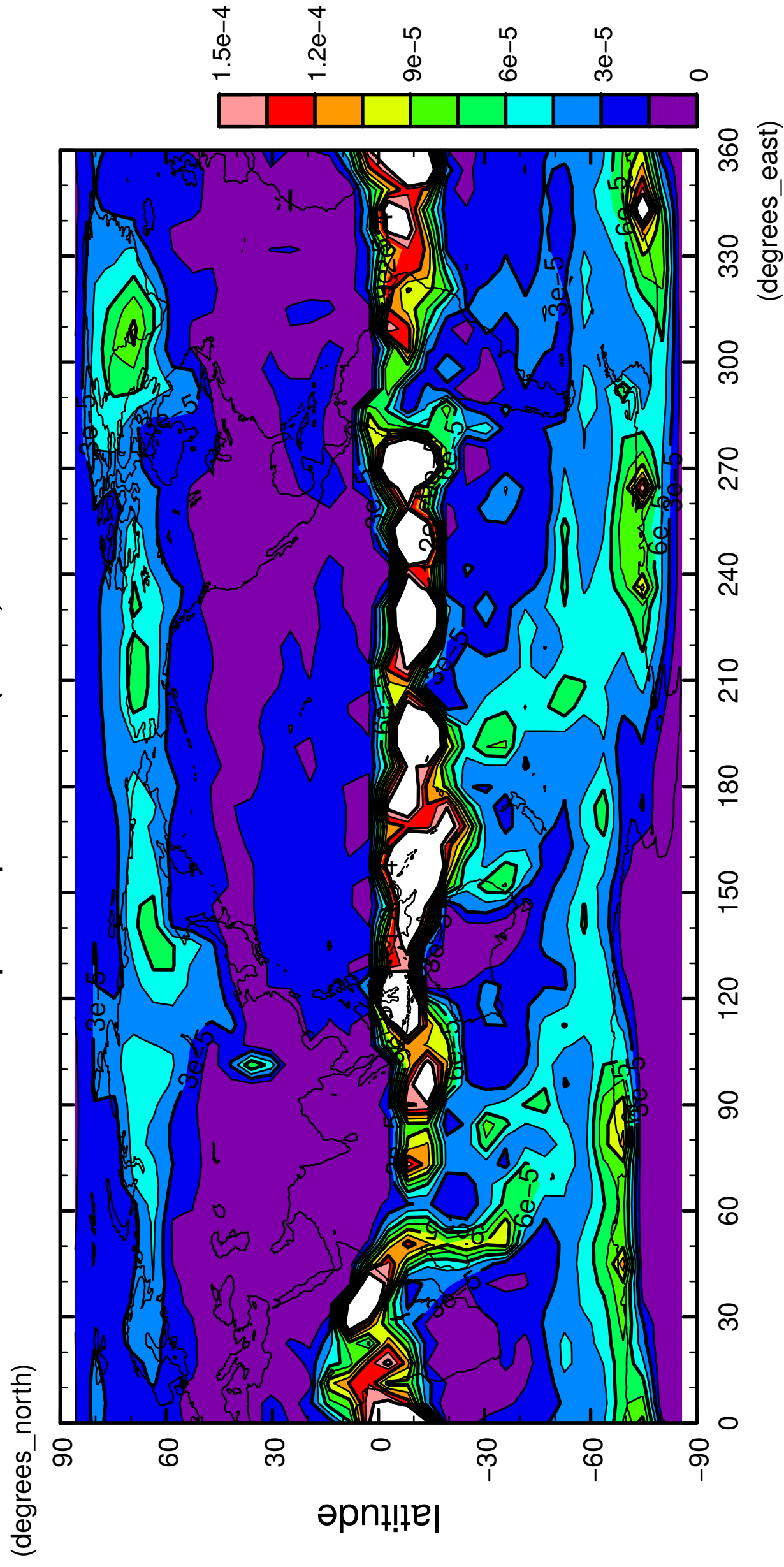
1/12

# precipitation (rain)



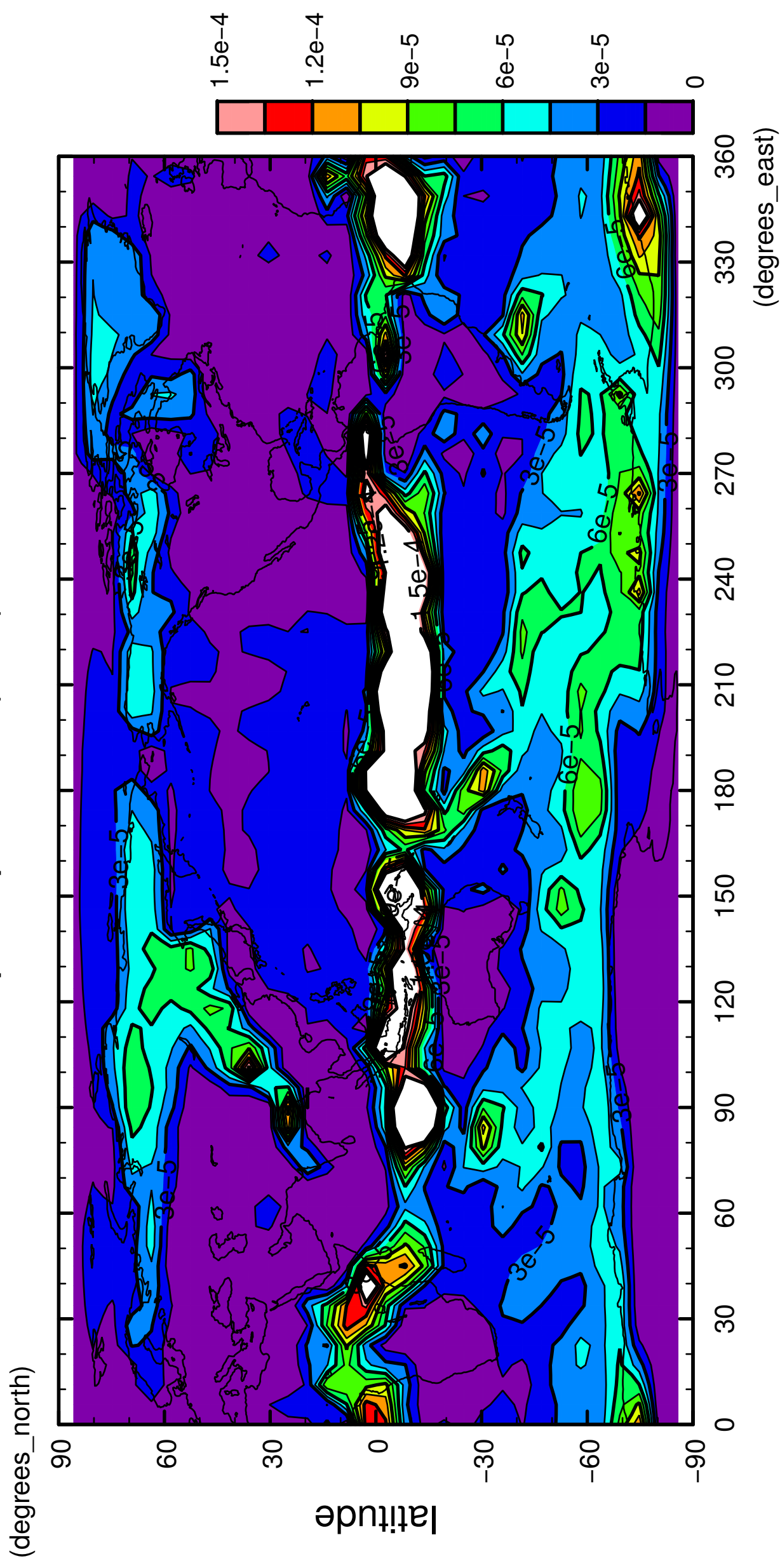
2/12

# precipitation (rain)



3/12

# precipitation (rain)

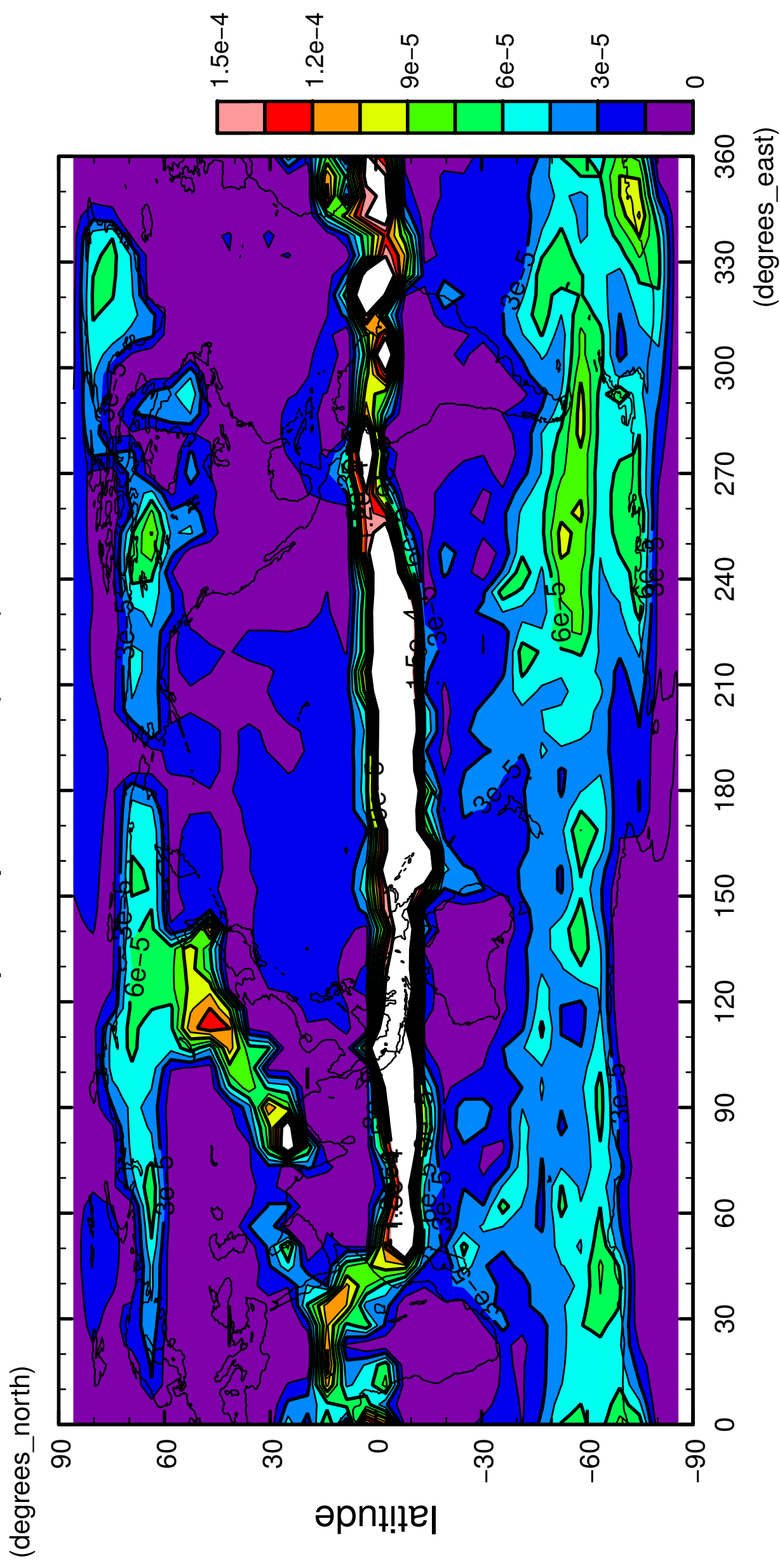


longitude

CONTOUR INTERVAL = 1.500E-05

4/12

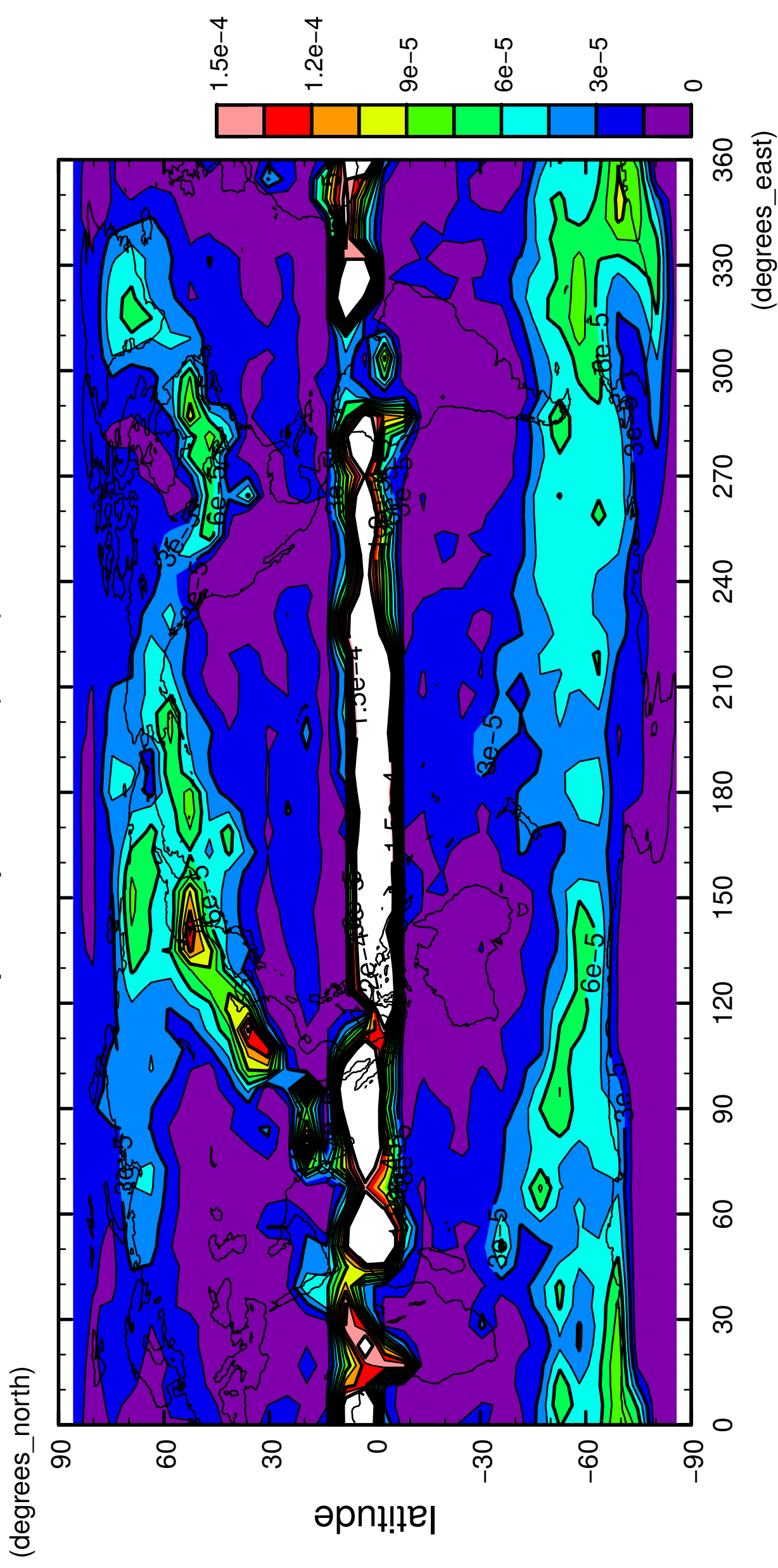
# precipitation (rain)





6/12

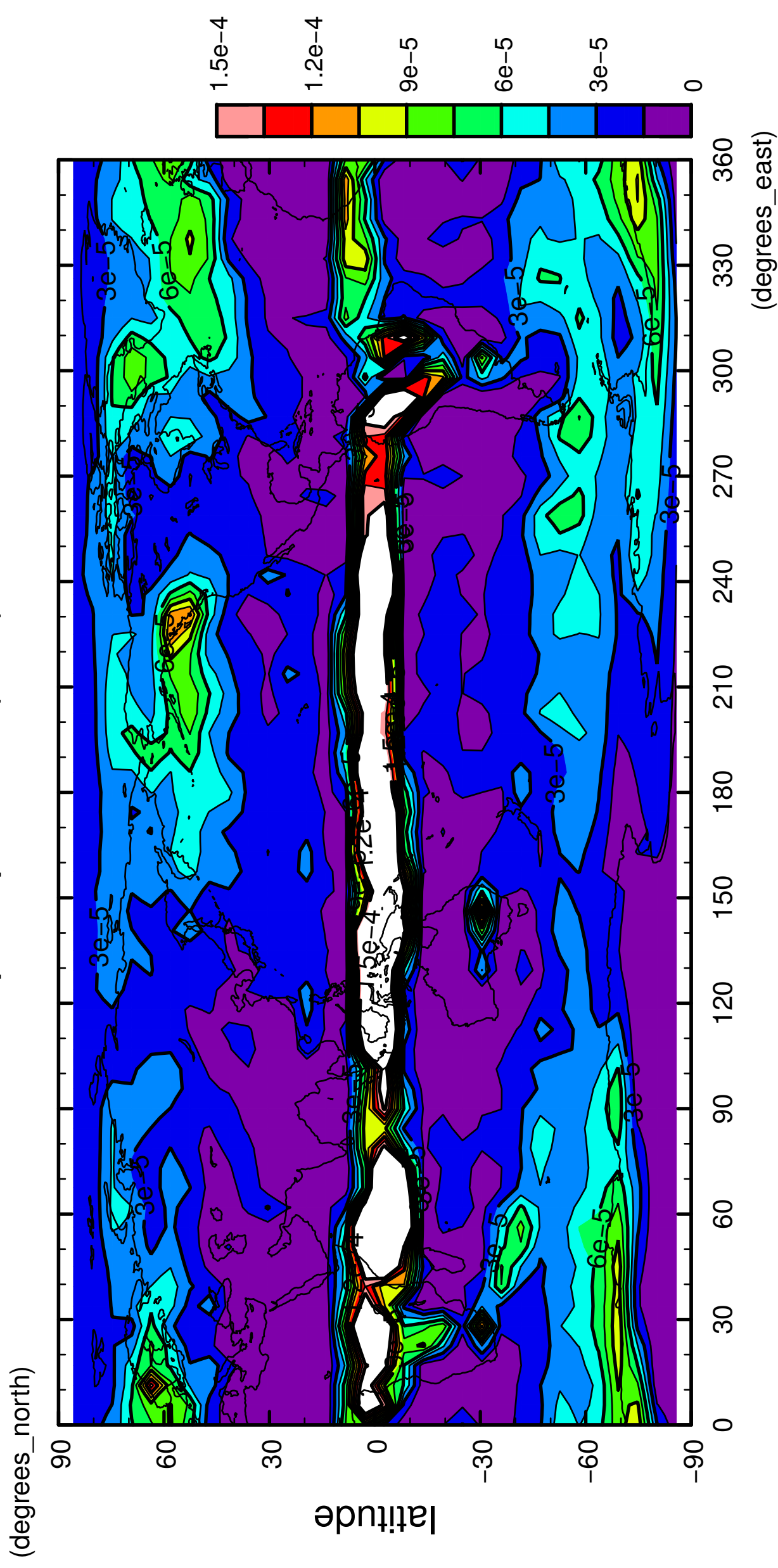
precipitation (rain)





8/12

# precipitation (rain)



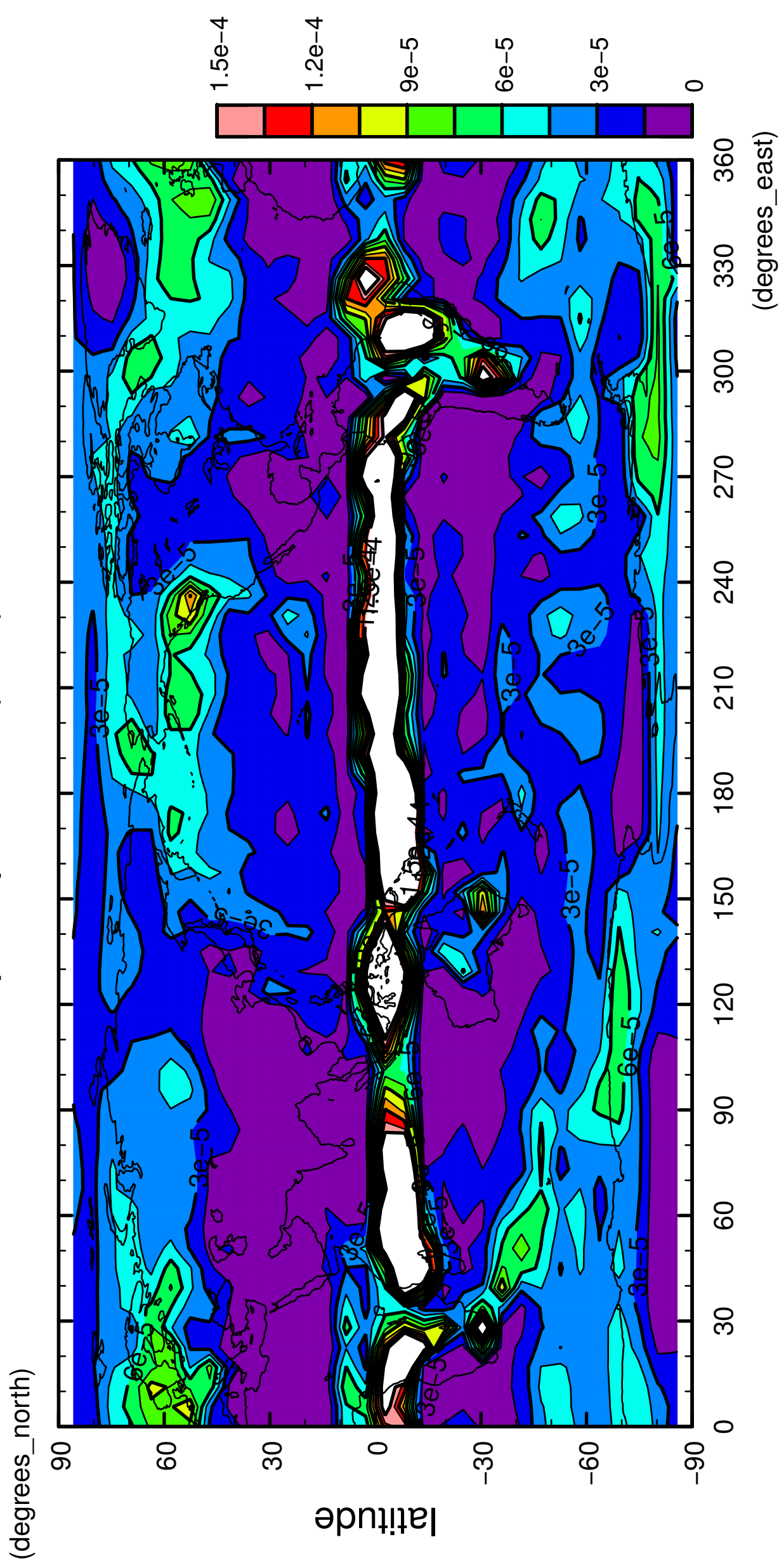
longitude

CONTOUR INTERVAL = 1.500E-05



9/12

precipitation (rain)

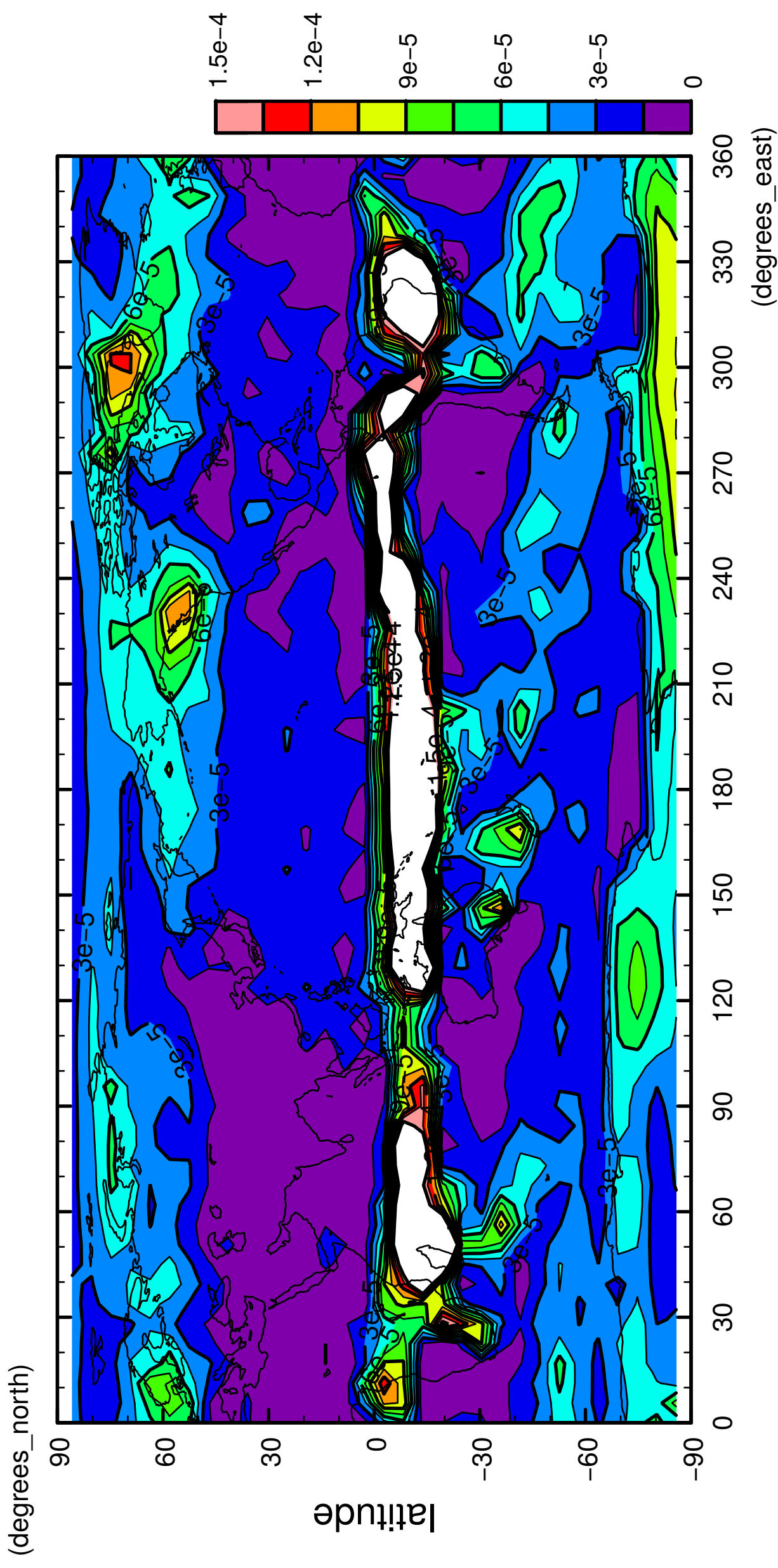


longitude

CONTOUR INTERVAL = 1.500E-05

10/12

precipitation (rain)

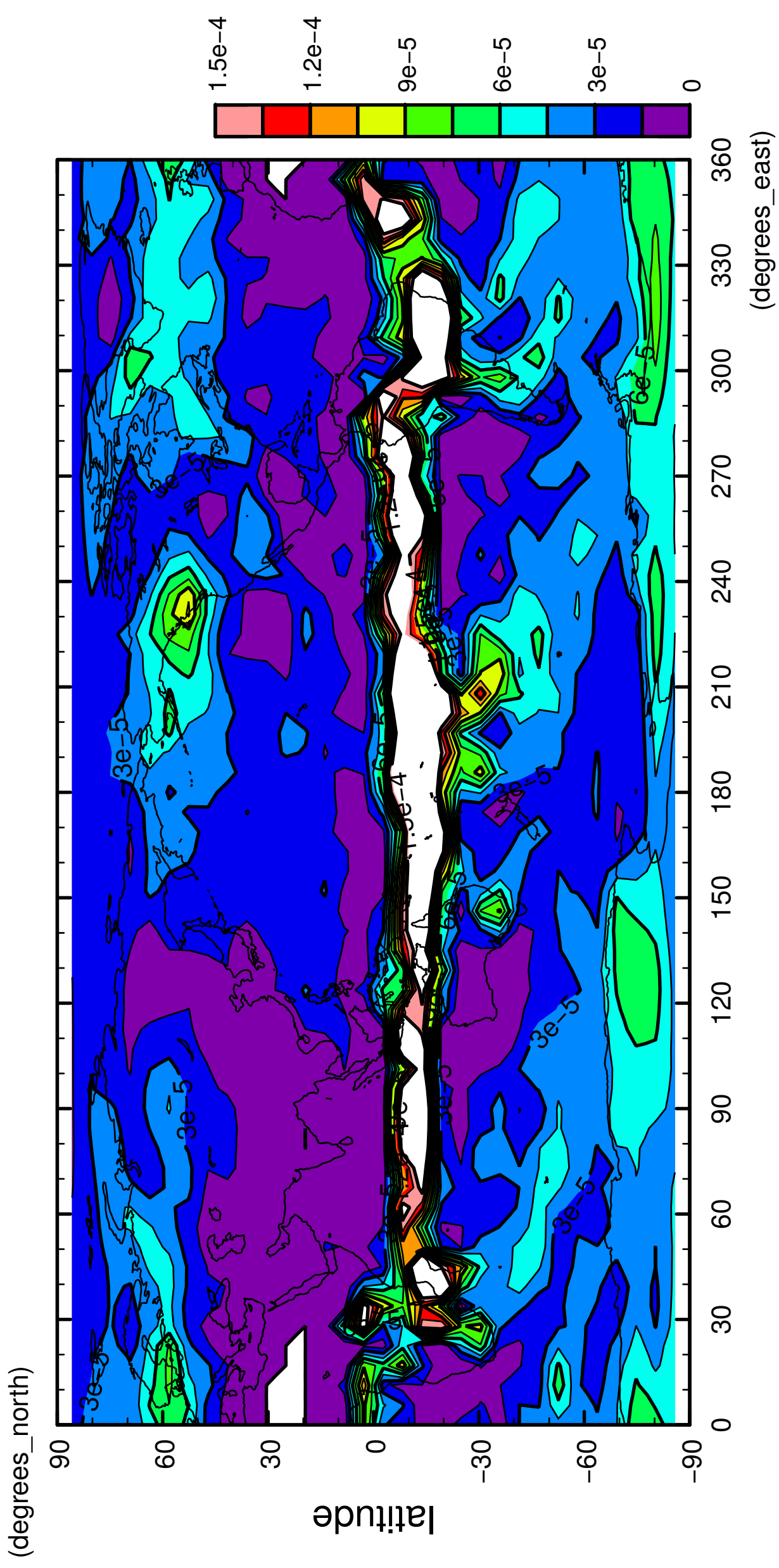


longitude

CONTOUR INTERVAL = 1.500E-05

11/12

# precipitation (rain)



12/12

precipitation (rain)

