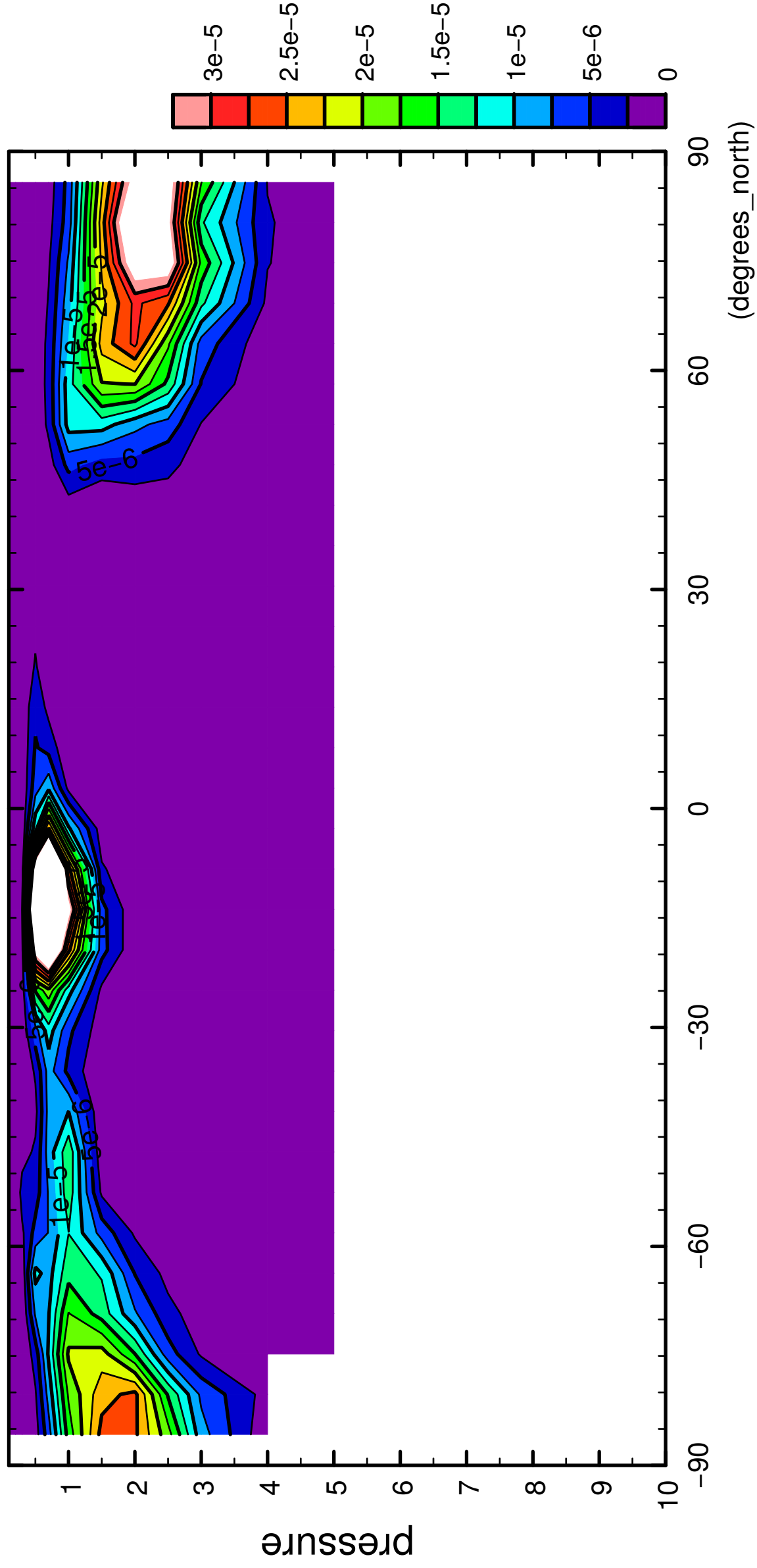


1/12

QH2OSol

( $\times 10^4$  Pa)



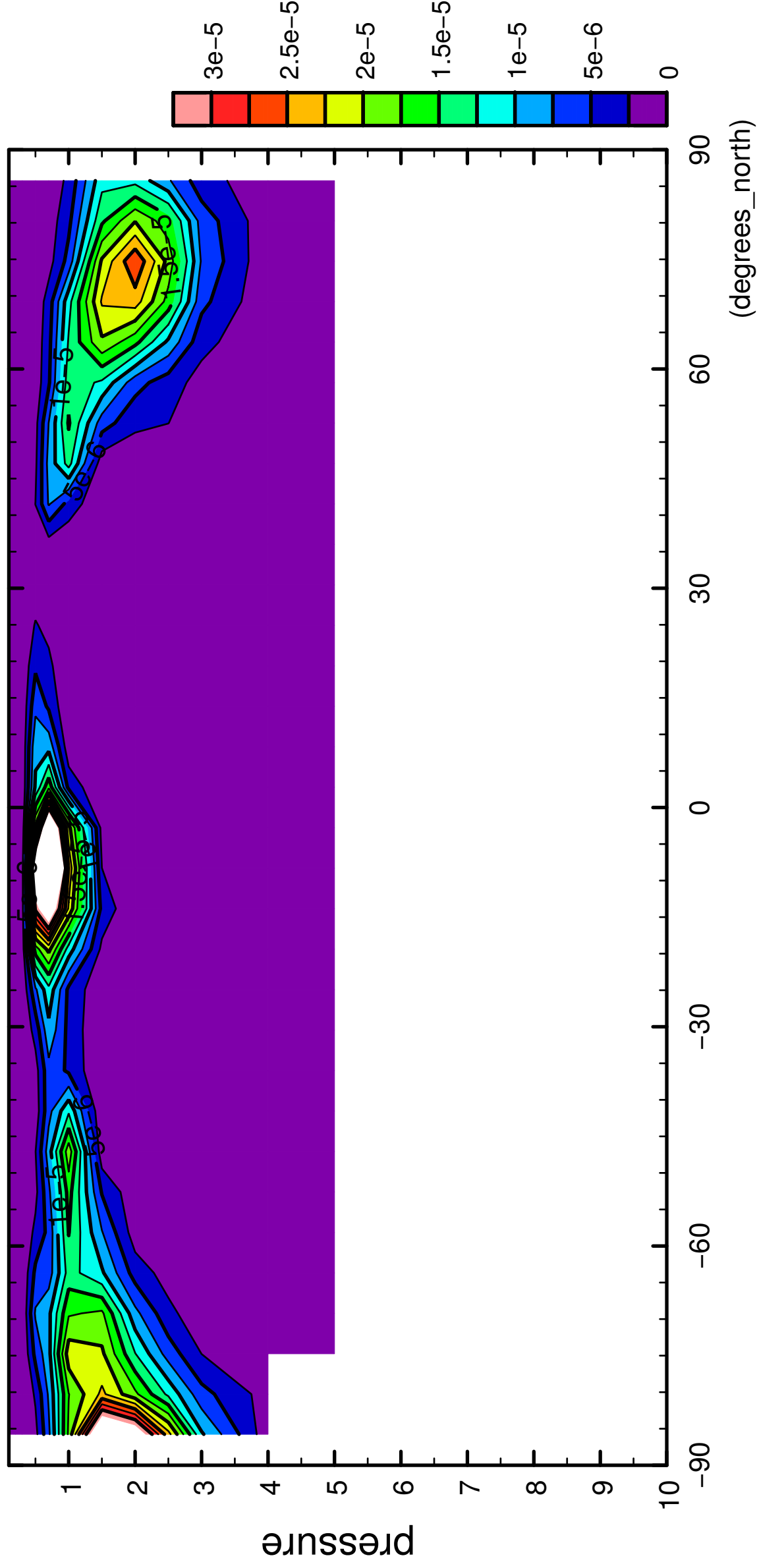
latitude

CONTOUR INTERVAL =  $2.500 \times 10^{-6}$

2/12

QH2OSol

( $\times 10^4$  Pa)



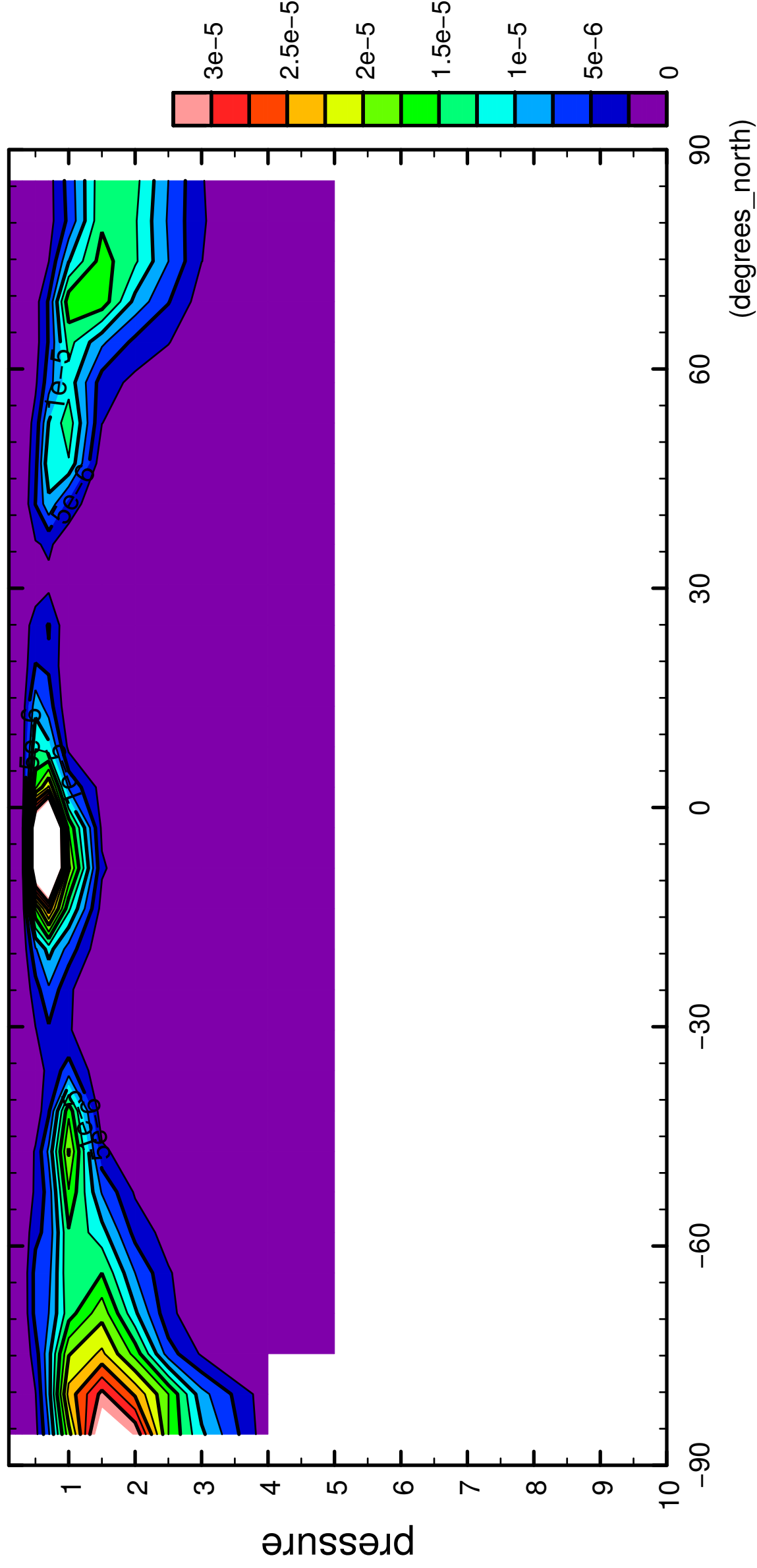
latitude

CONTOUR INTERVAL = 2.500E-06

3/12

QH2OSol

( $\times 10^4$  Pa)



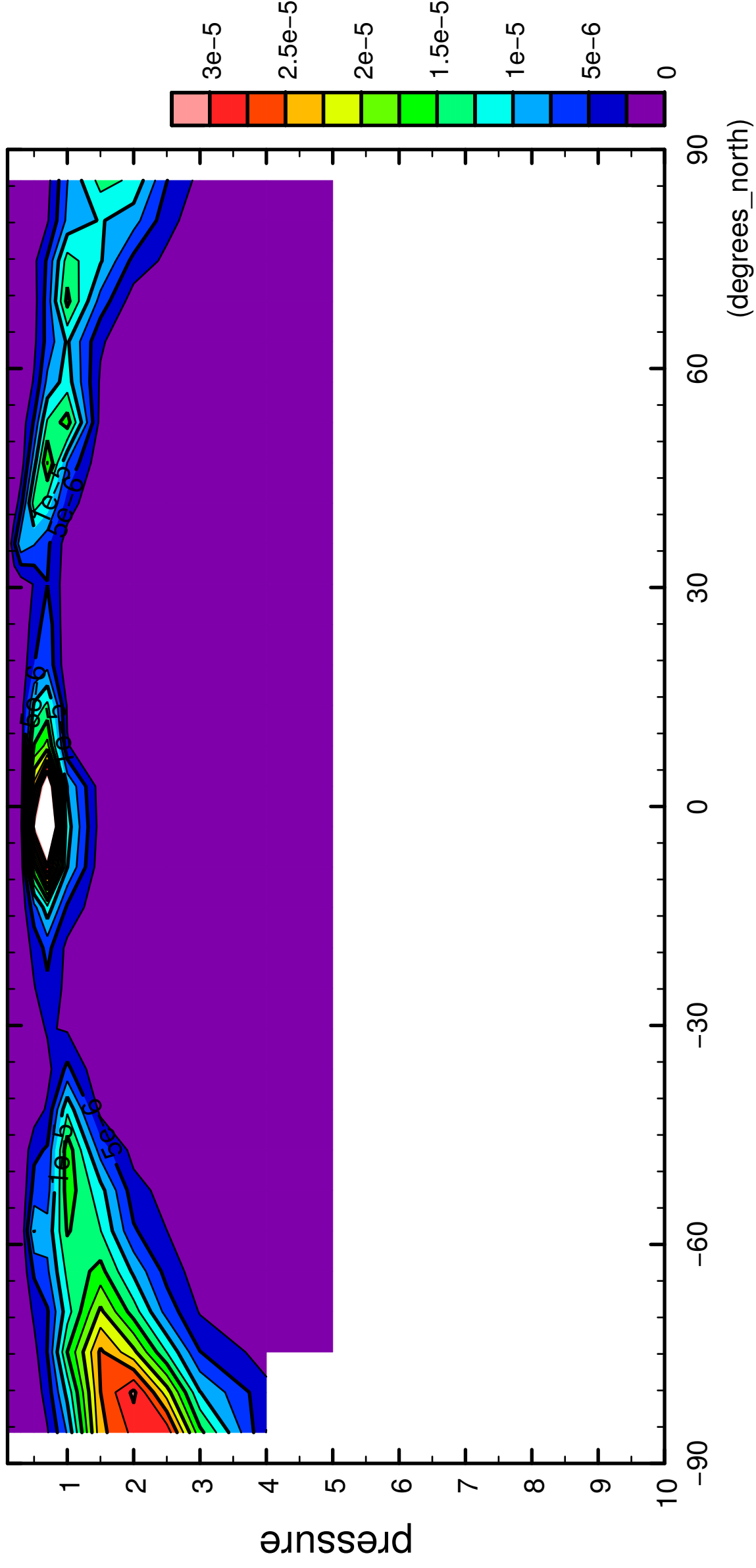
latitude

CONTOUR INTERVAL = 2.500E-06

4/12

QH2OSol

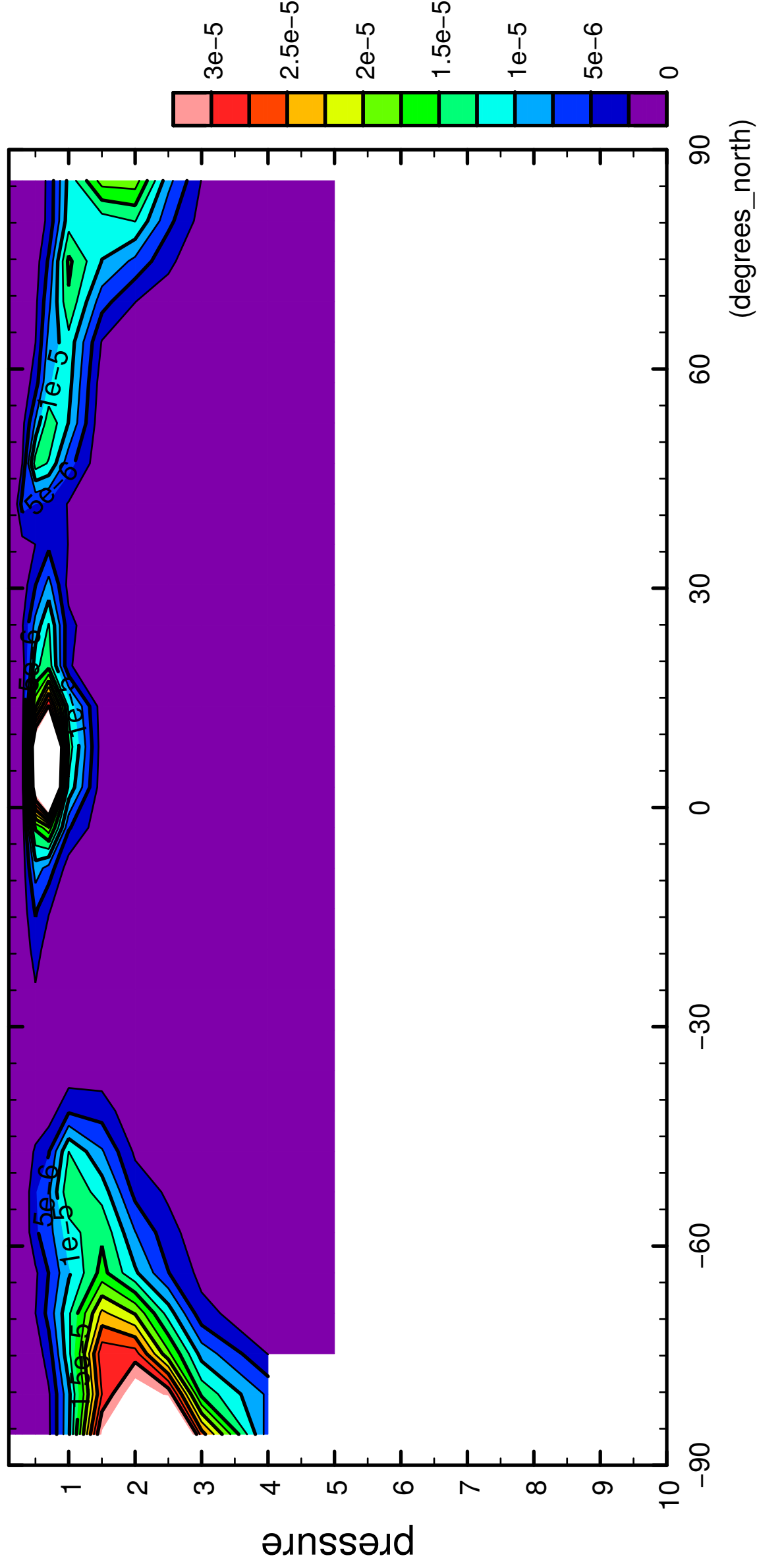
( $\times 10^4$  Pa)



5/12

QH2OSol

( $\times 10^4$  Pa)



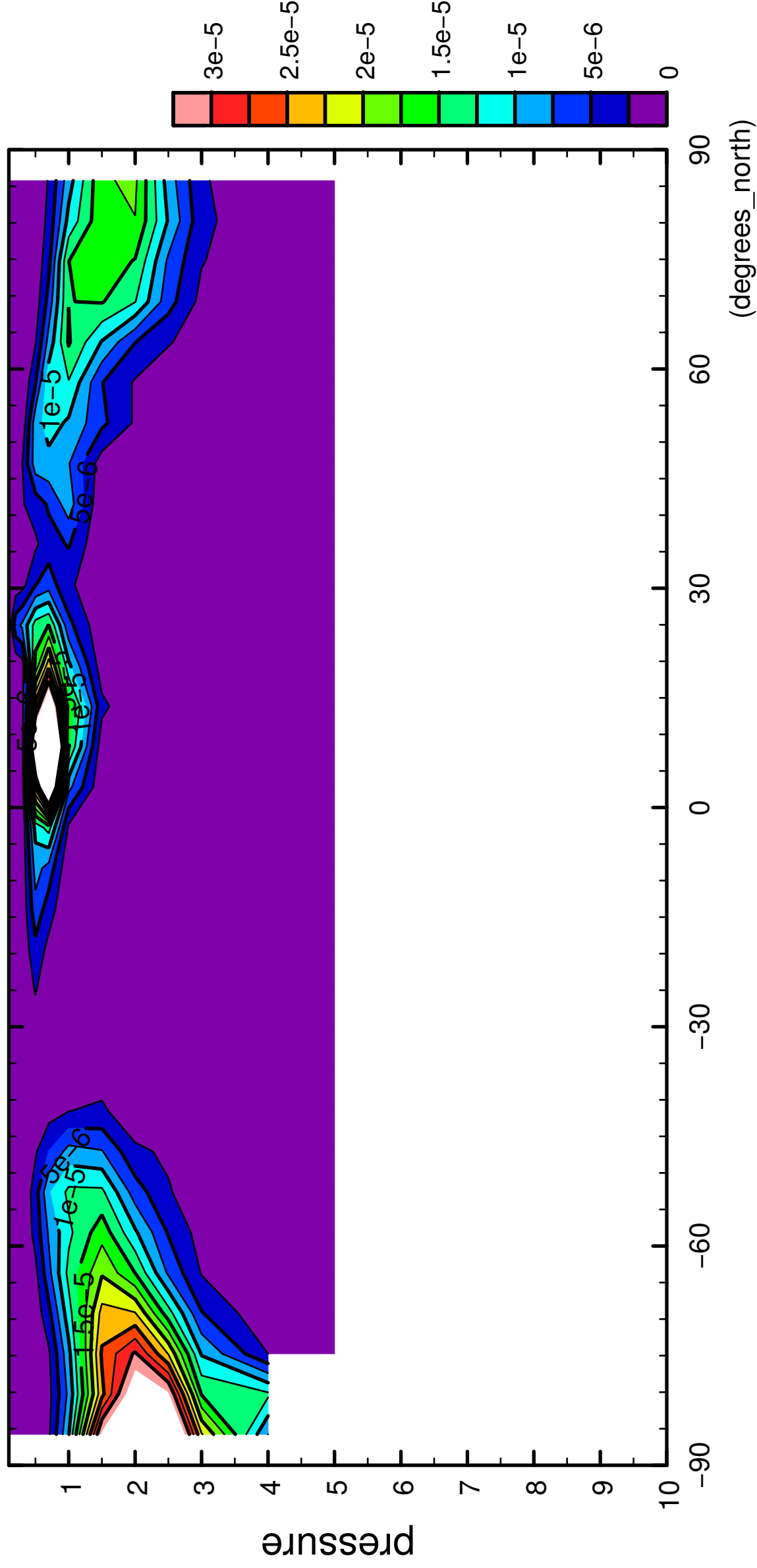
latitude

CONTOUR INTERVAL =  $2.500 \times 10^{-6}$

6/12

QH2OSol

( $\times 10^4$  Pa)

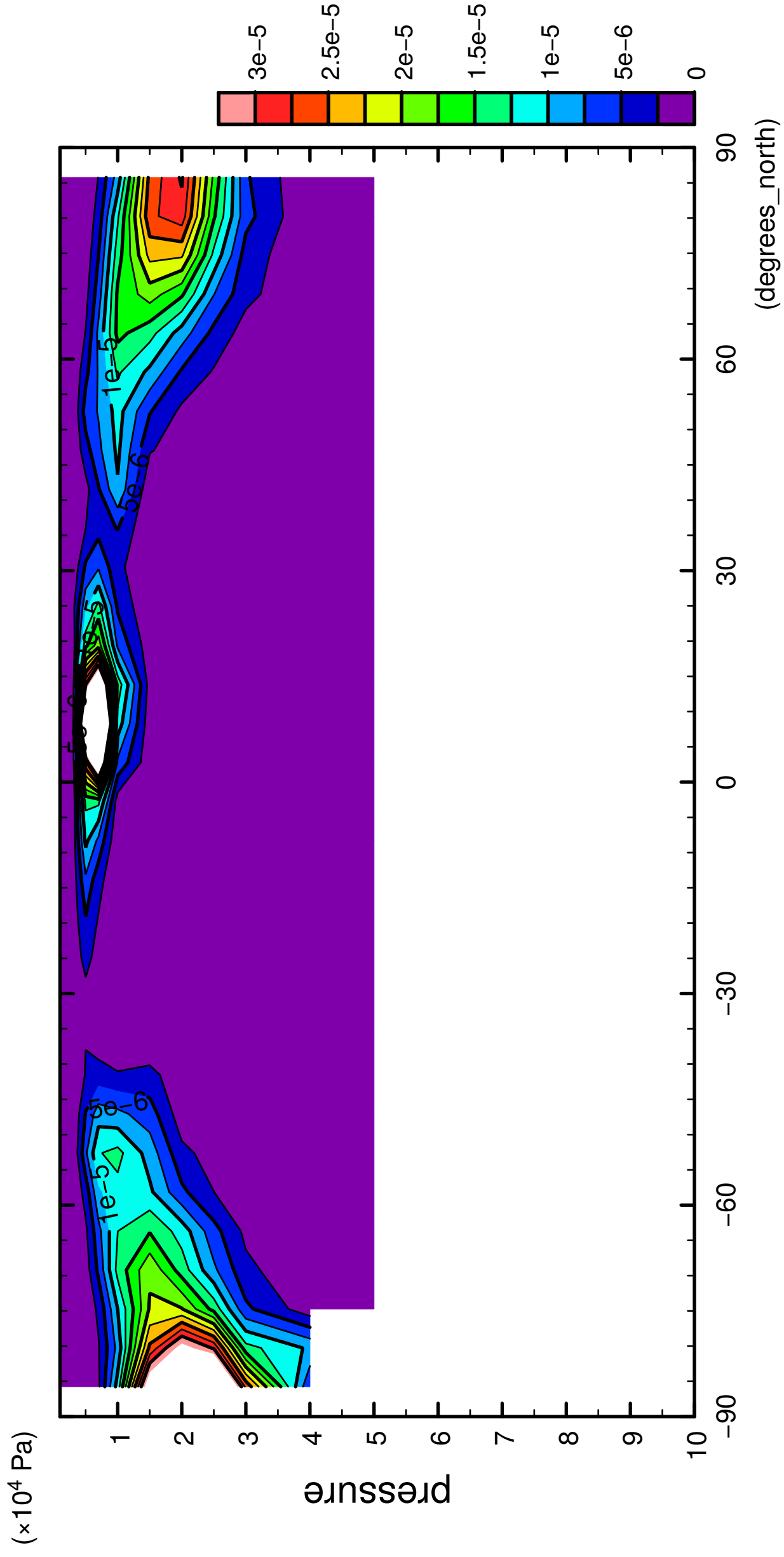


latitude

CONTOUR INTERVAL =  $2.500 \times 10^{-6}$

7/12

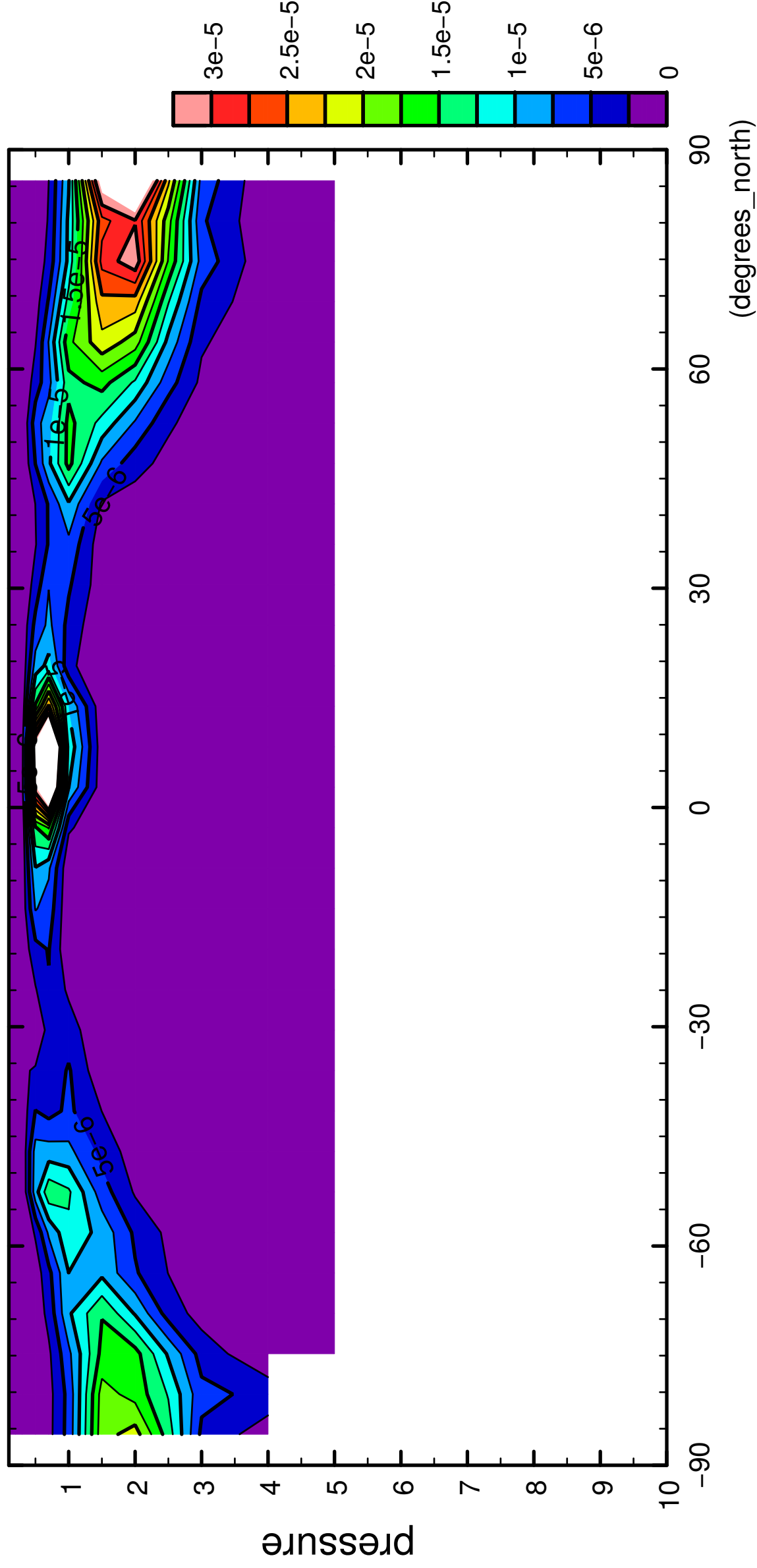
QH2OSol



8/12

QH2OSol

( $\times 10^4$  Pa)



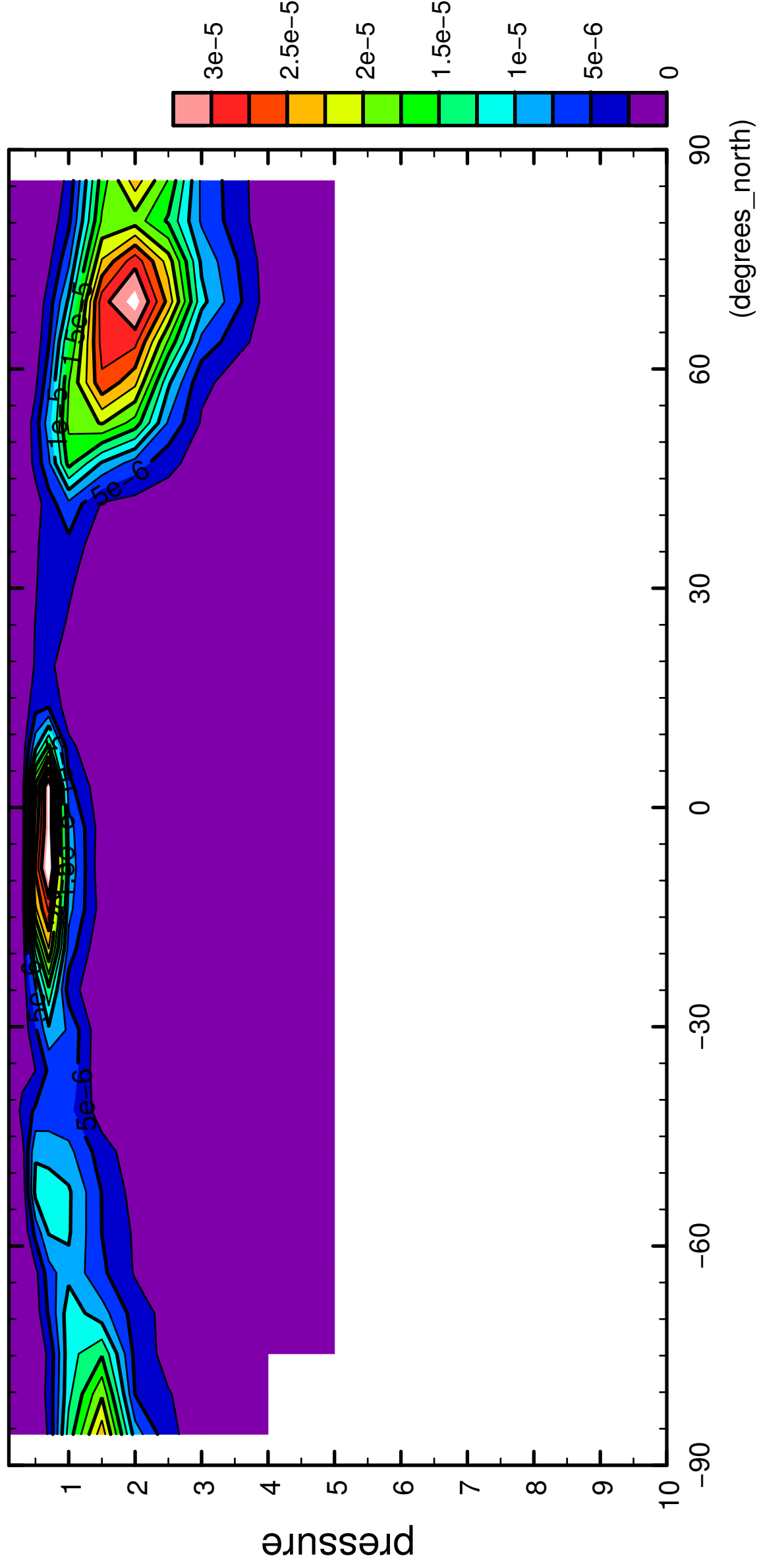
CONTOUR INTERVAL = 2.500E-06



9/12

QH2OSol

( $\times 10^4$  Pa)



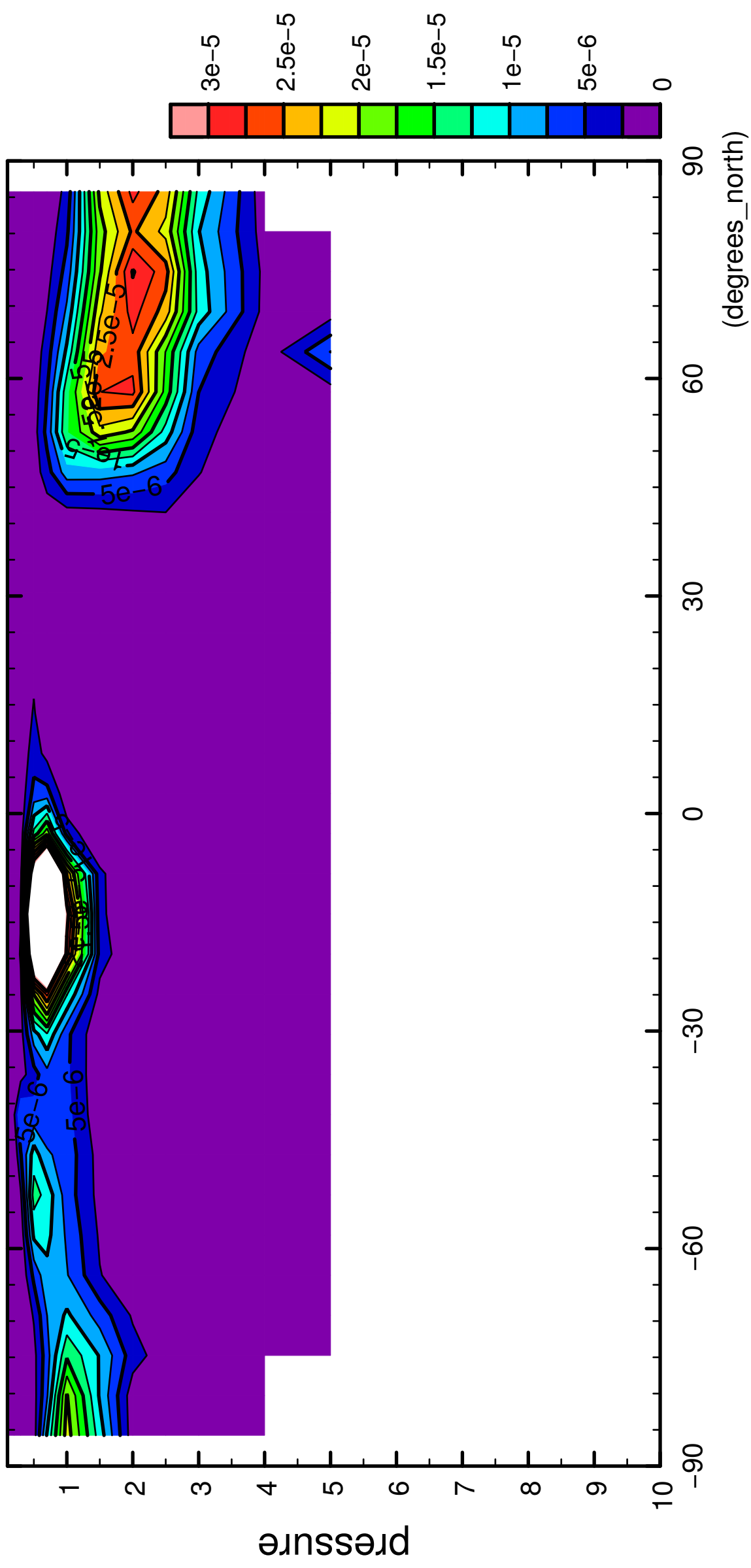
latitude

CONTOUR INTERVAL =  $2.500 \times 10^{-6}$

10/12

QH2OSol

( $\times 10^4$  Pa)



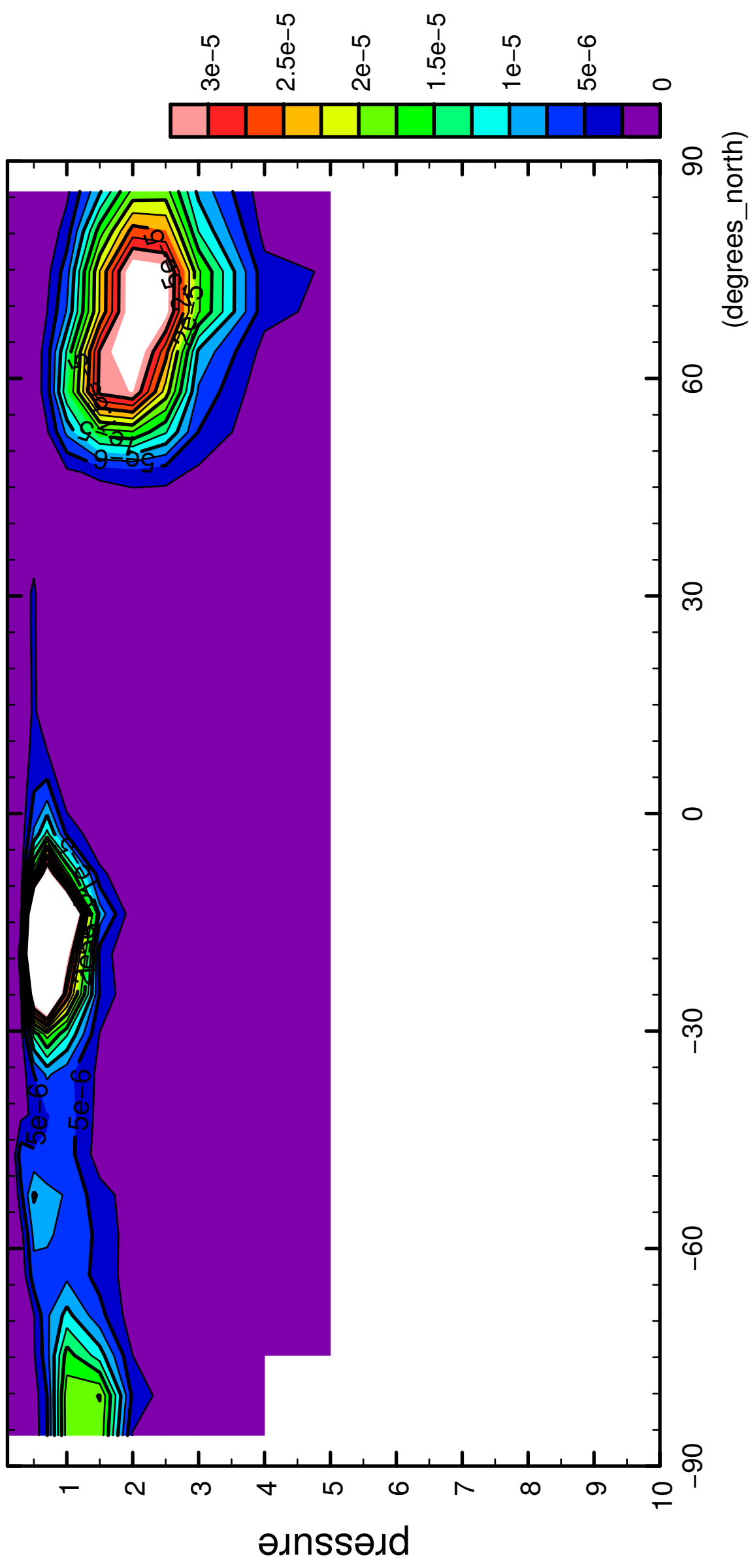
latitude

CONTOUR INTERVAL =  $2.500E-06$

11/12

QH2OSol

( $\times 10^4$  Pa)



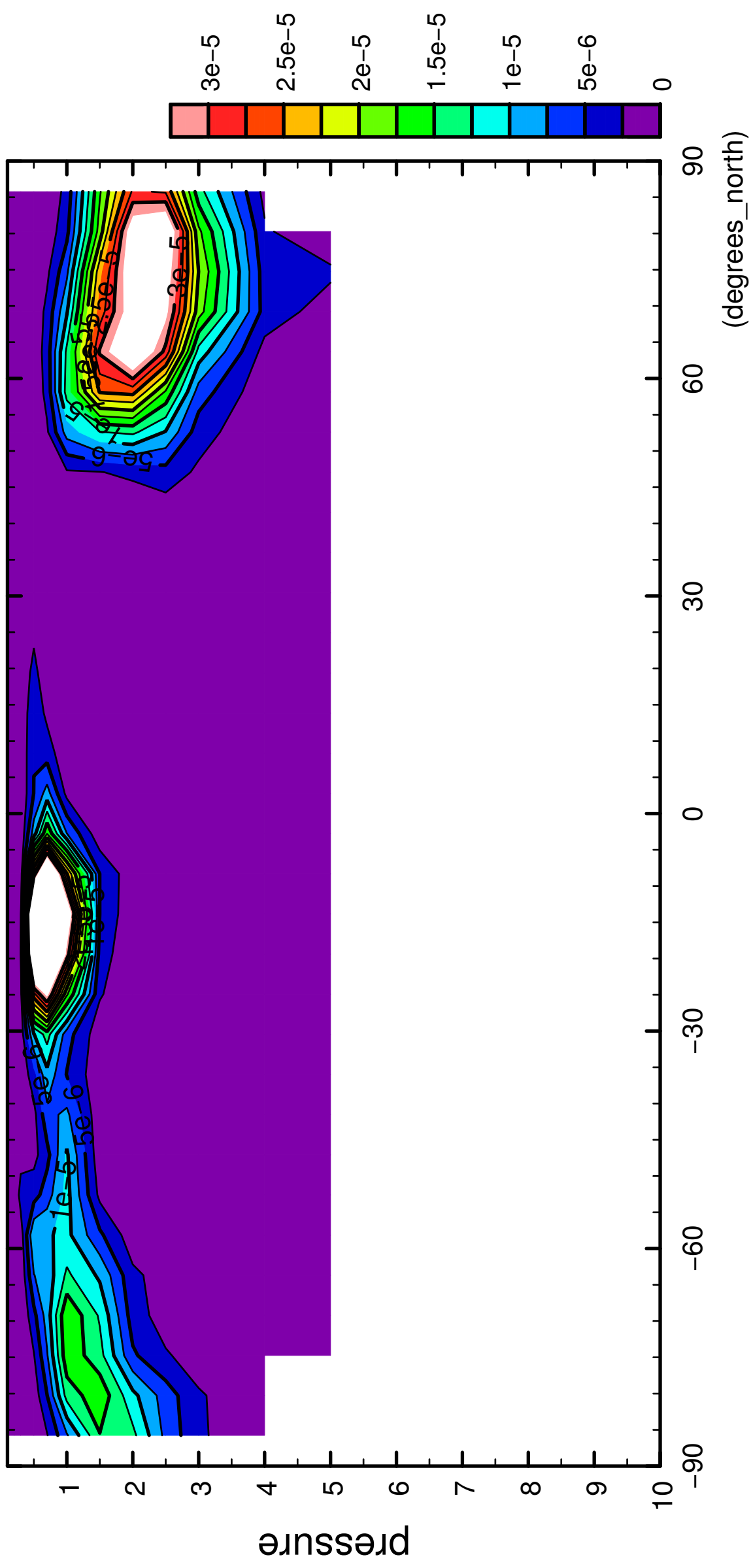
latitude

CONTOUR INTERVAL = 2.500E-06

12/12

QH2OSol

( $\times 10^4$  Pa)



latitude

CONTOUR INTERVAL =  $2.500E-06$