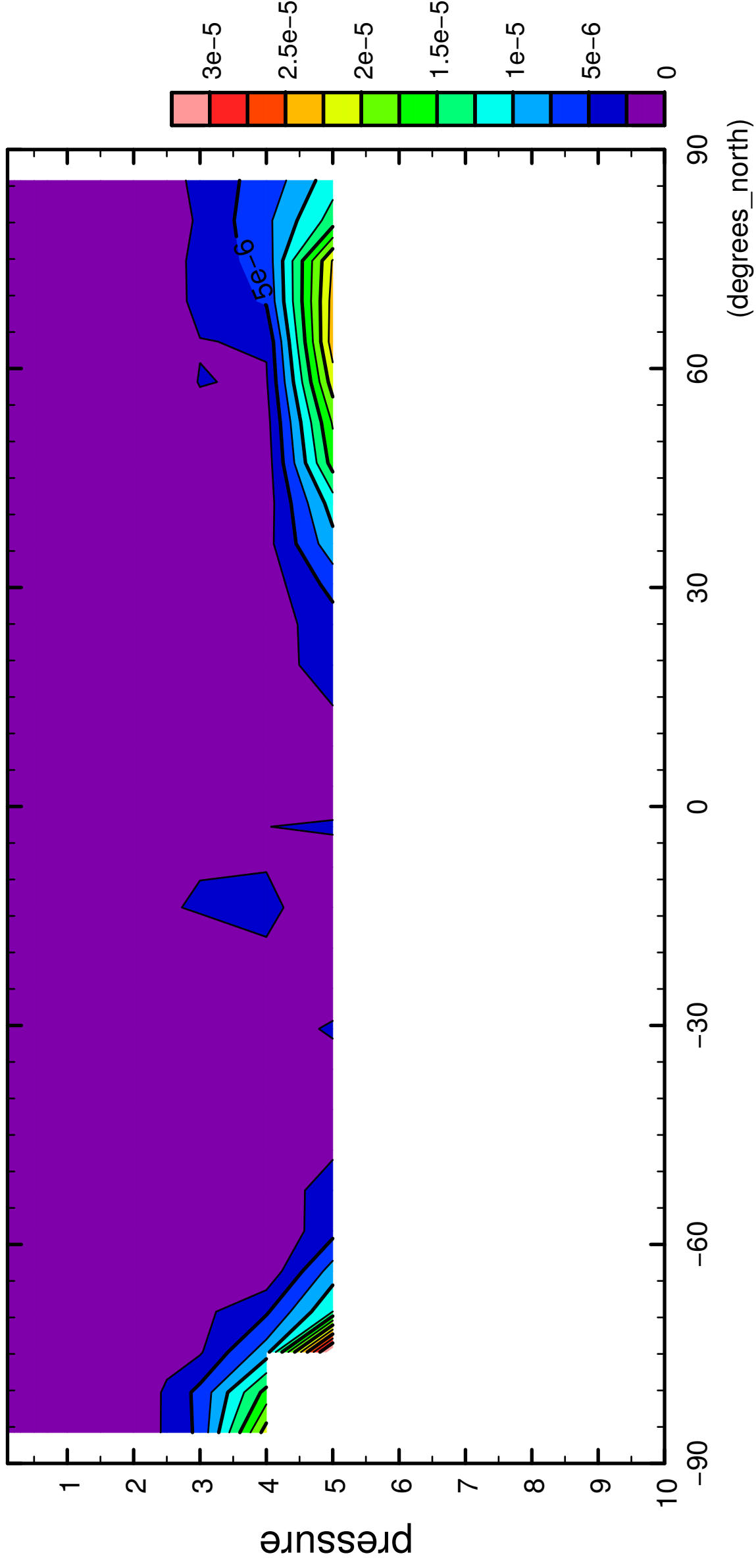


1/12

QH2OLiq

($\times 10^4$ Pa)



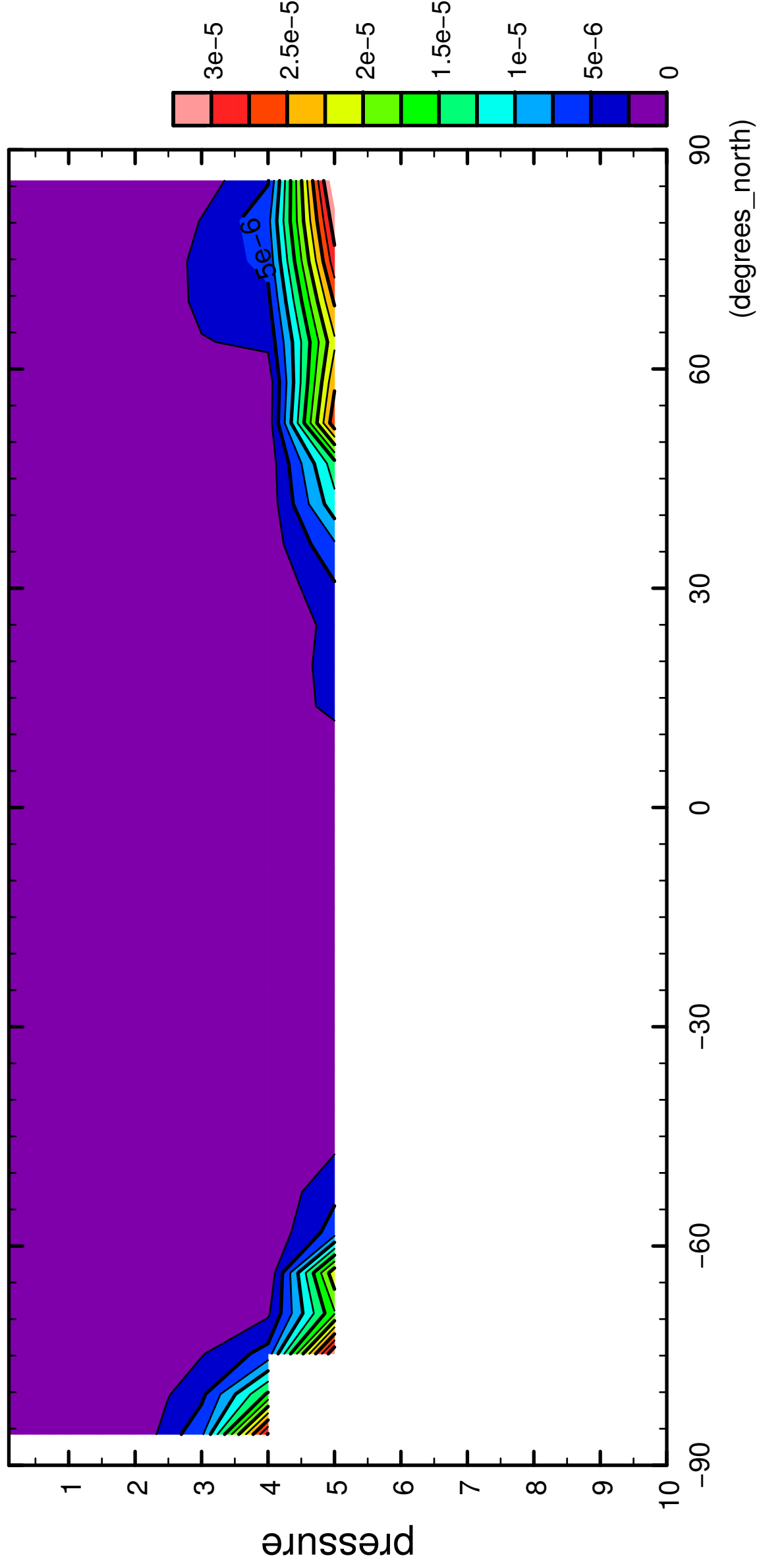
latitude

CONTOUR INTERVAL = $2.500E-06$

2/12

QH2OLiq

($\times 10^4$ Pa)



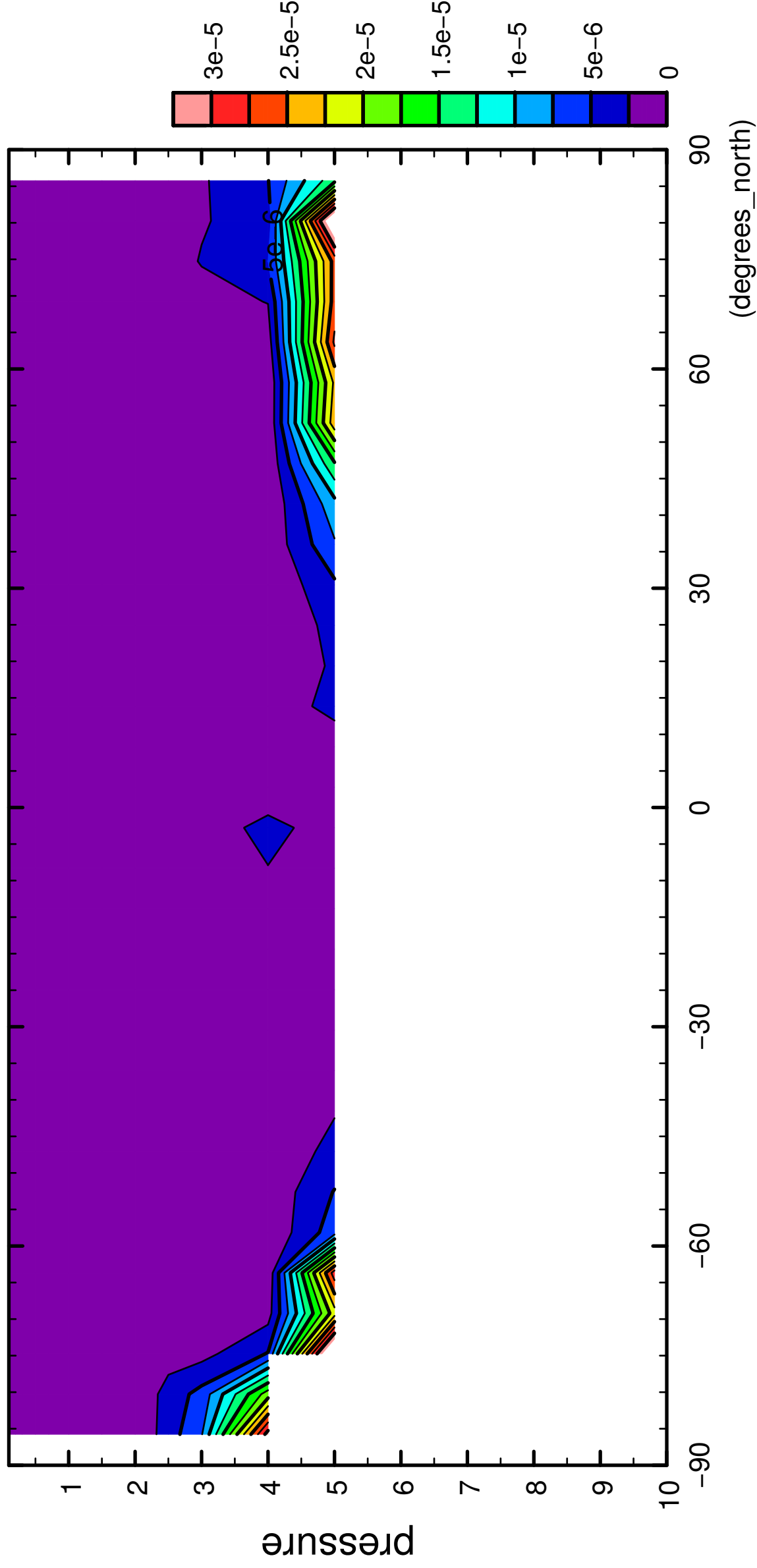
latitude

CONTOUR INTERVAL = 2.500E-06

3/12

QH2OLiq

($\times 10^4$ Pa)



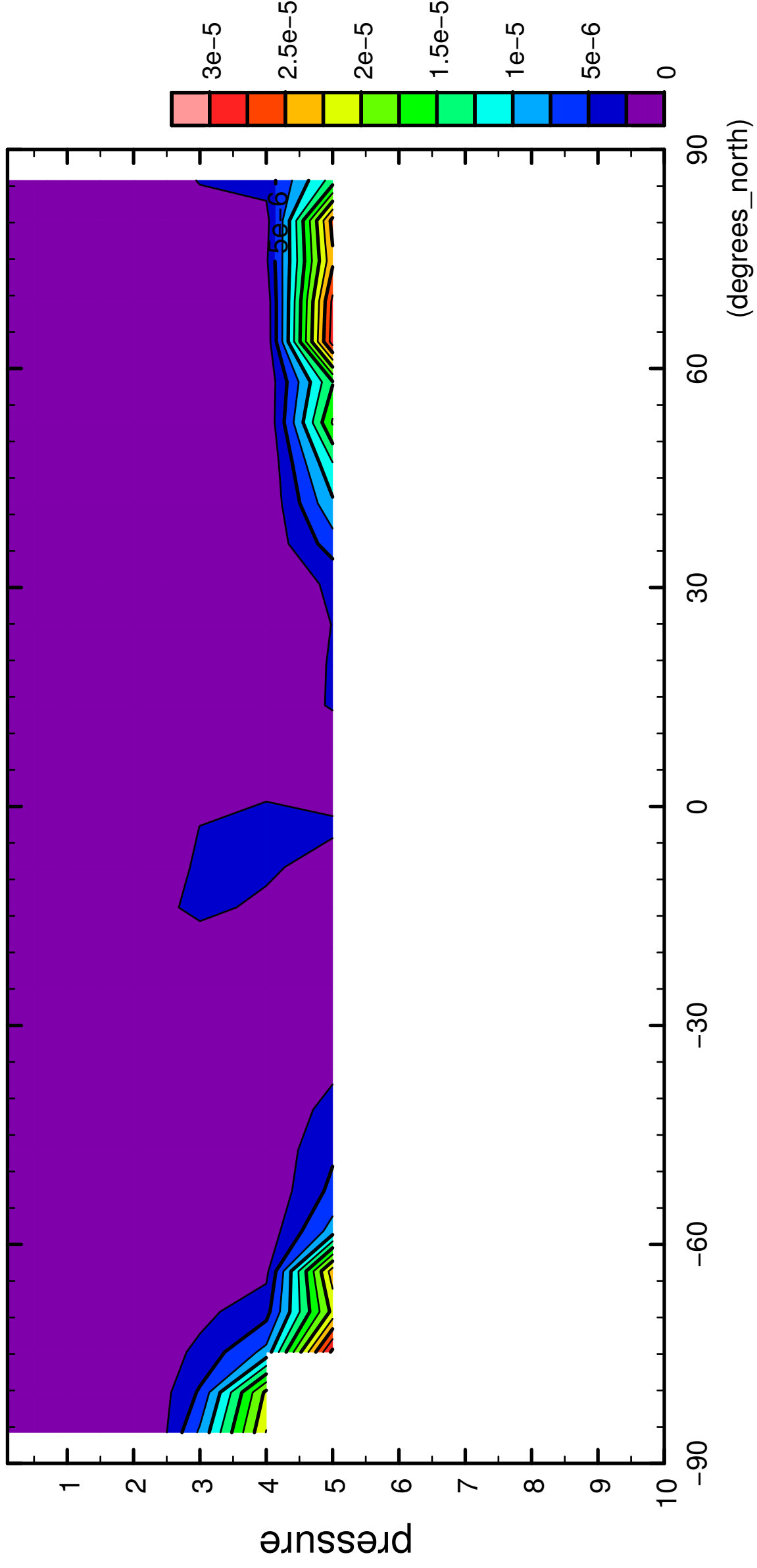
latitude

CONTOUR INTERVAL = 2.500×10^{-6}

4/12

QH2OLiq

($\times 10^4$ Pa)



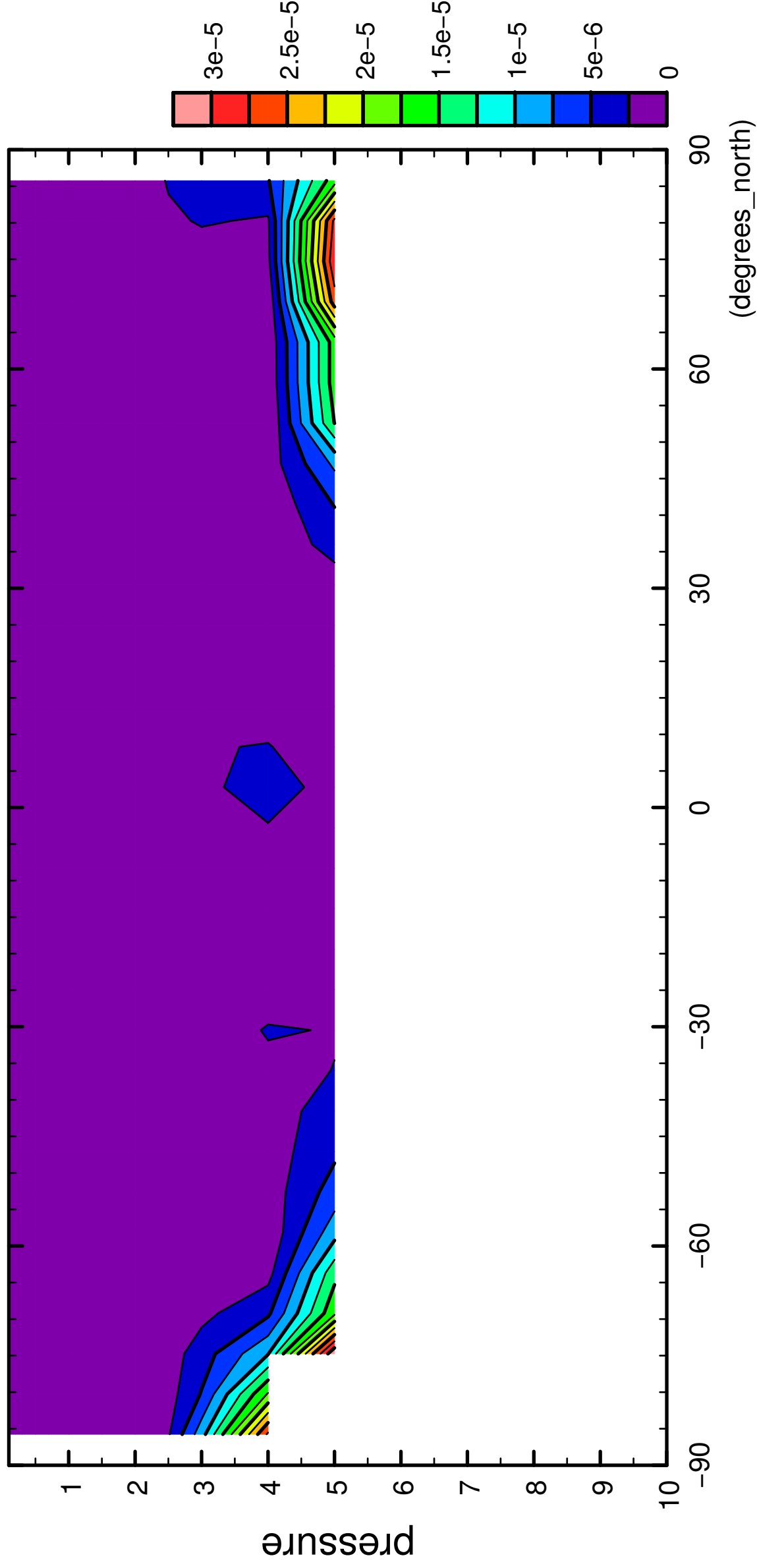
latitude

CONTOUR INTERVAL = $2.500E-06$

5/12

QH2OLiq

($\times 10^4$ Pa)



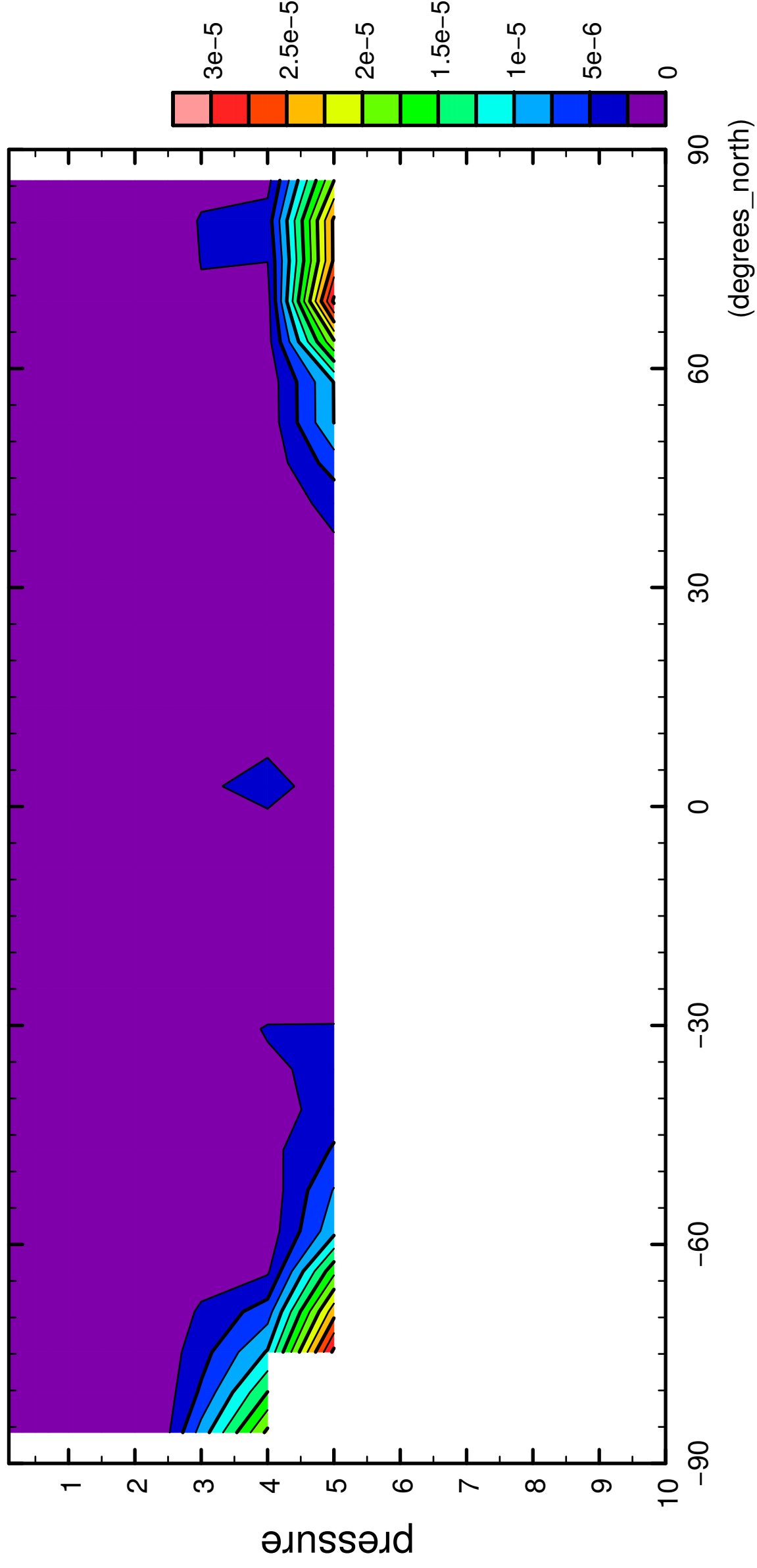
latitude

CONTOUR INTERVAL = 2.500E-06

6/12

QH2OLiq

($\times 10^4$ Pa)

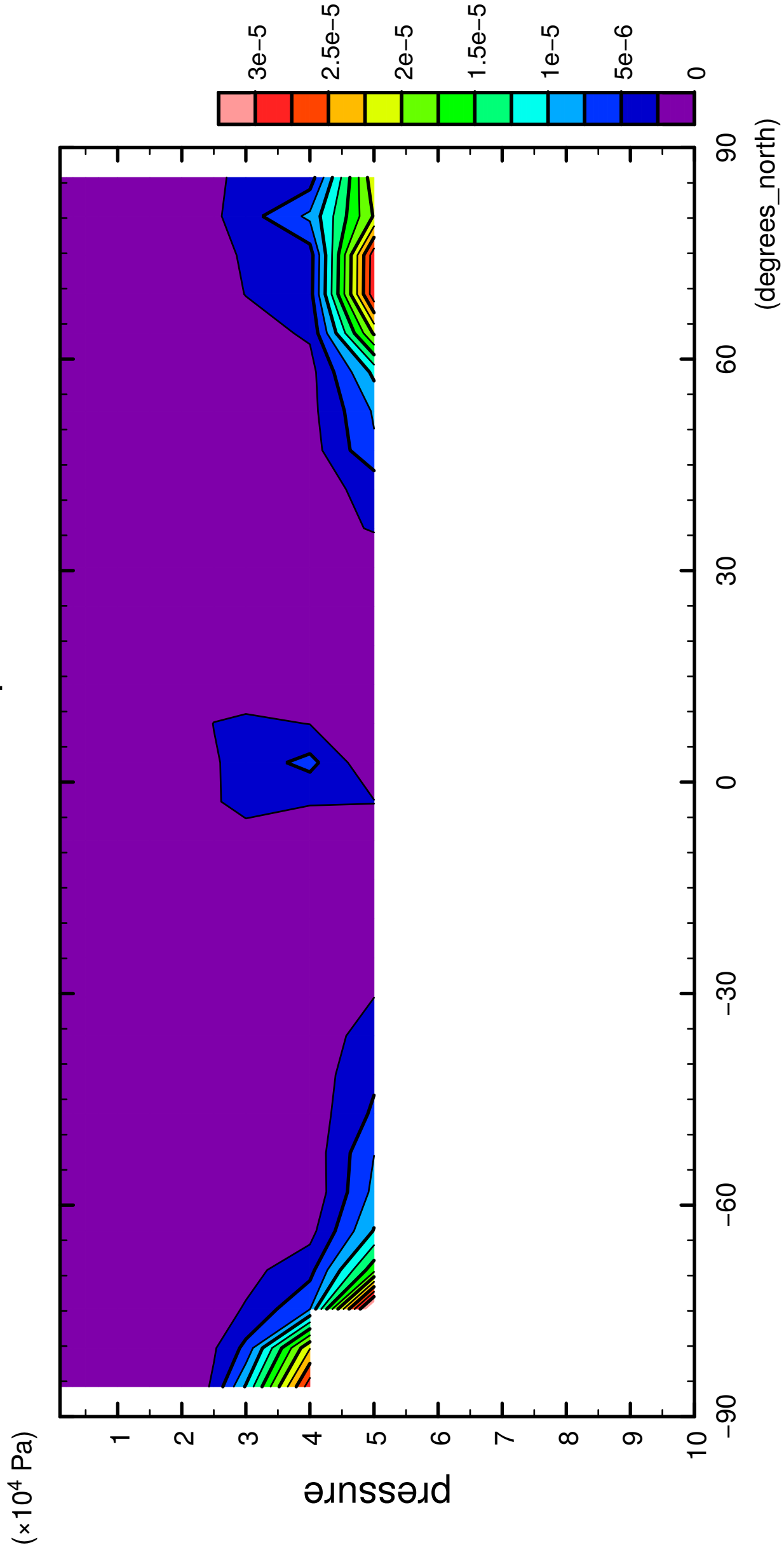


latitude

CONTOUR INTERVAL = 2.500E-06

7/12

QH2OLiq



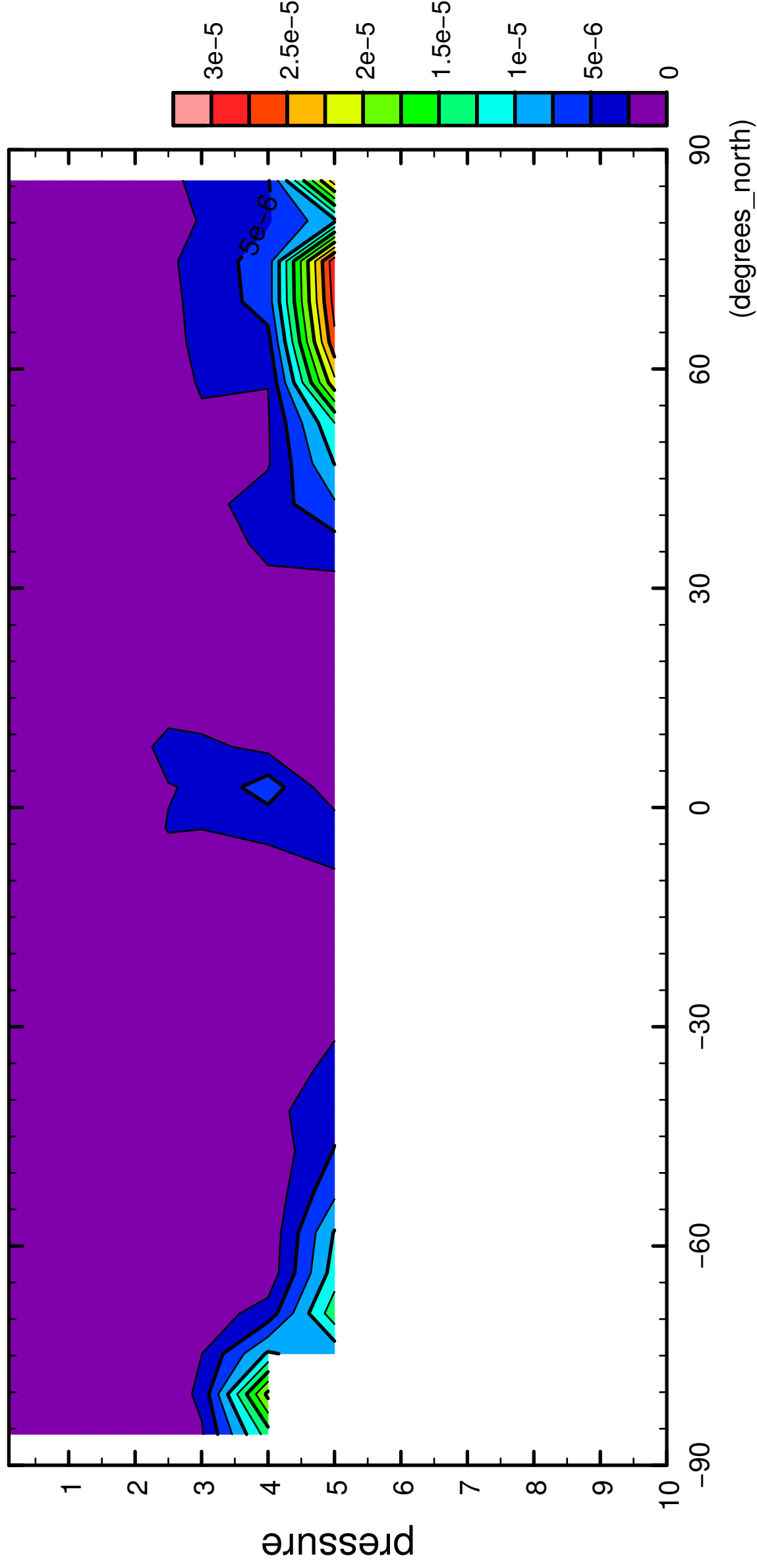
latitude

CONTOUR INTERVAL = 2.500E-06

8/12

QH2OLiq

($\times 10^4$ Pa)



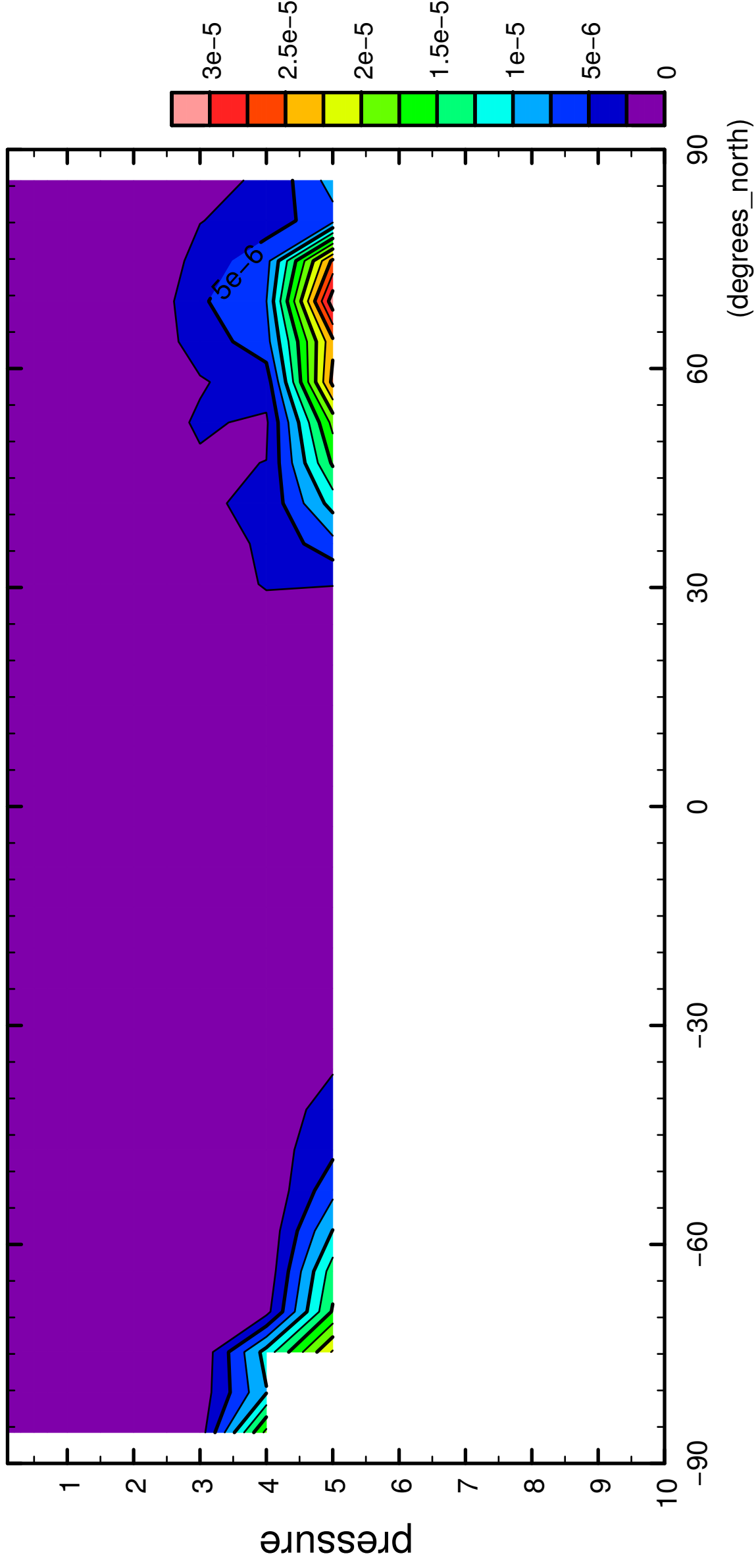
latitude

CONTOUR INTERVAL = 2.500E-06

9/12

QH2OLiq

($\times 10^4$ Pa)



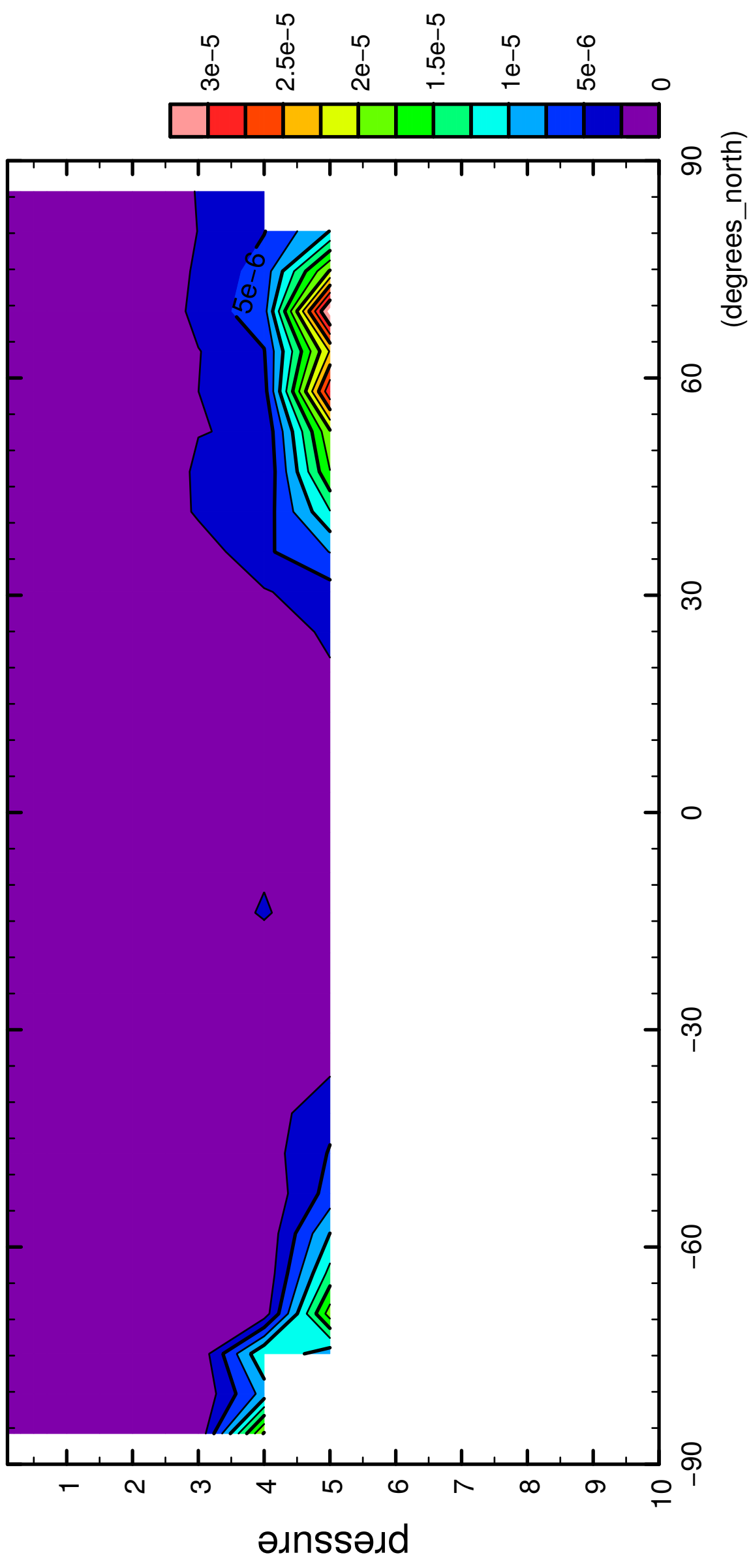
latitude

CONTOUR INTERVAL = 2.500E-06

10/12

QH2OLiq

($\times 10^4$ Pa)



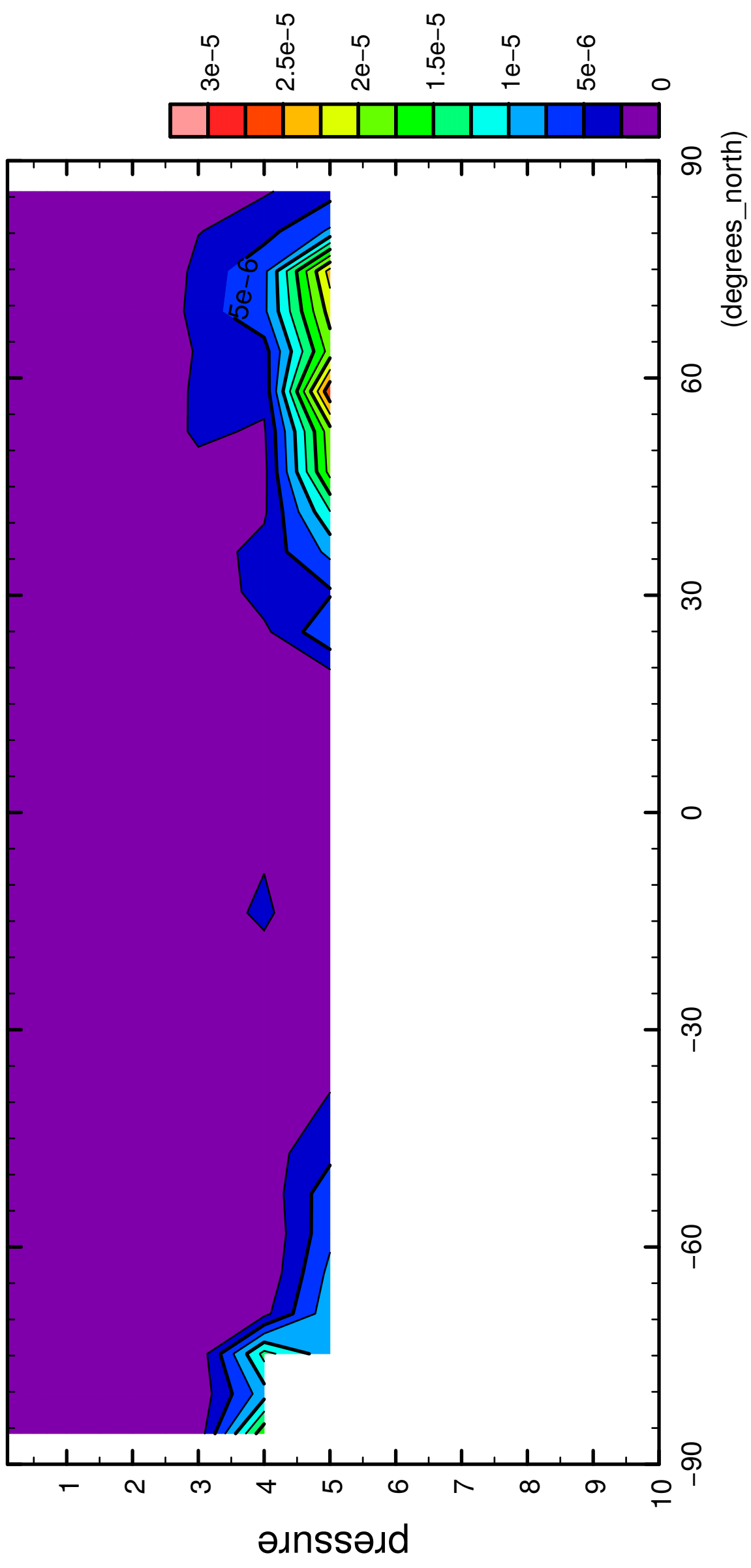
latitude

CONTOUR INTERVAL = 2.500E-06

11/12

QH2OLiq

($\times 10^4$ Pa)



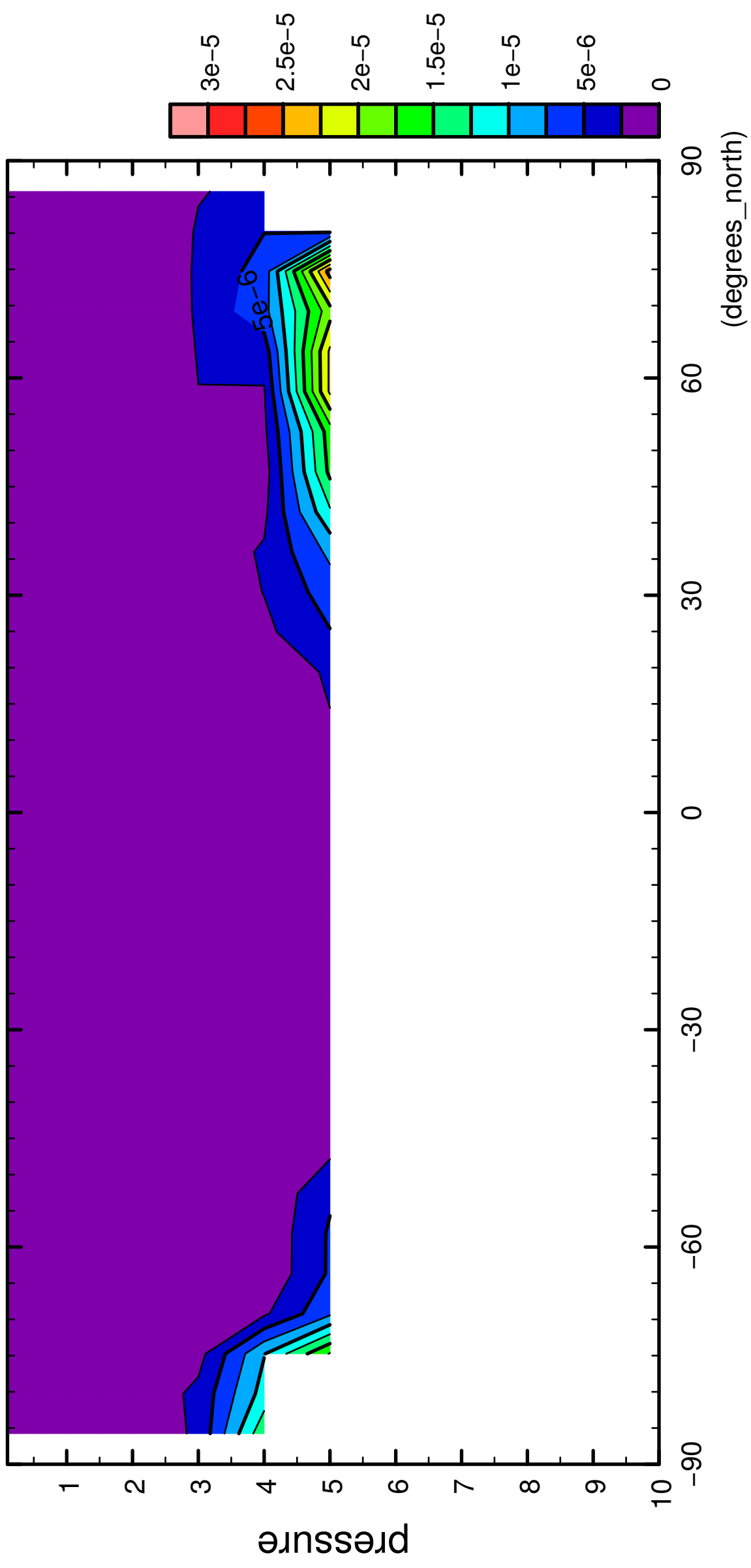
latitude

CONTOUR INTERVAL = 2.500E-06

12/12

QH2OLiq

($\times 10^4$ Pa)



latitude

CONTOUR INTERVAL = 2.500×10^{-6}