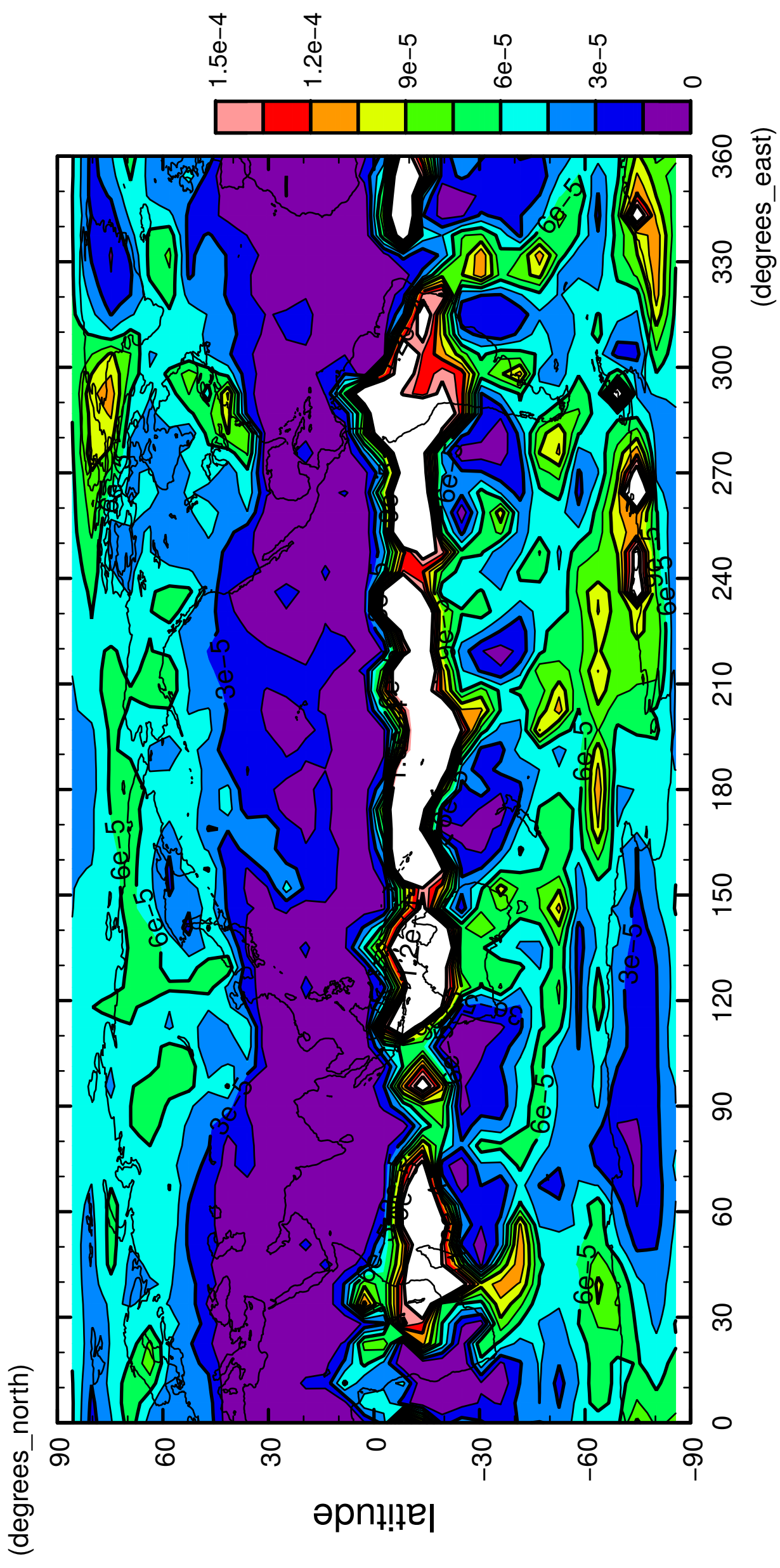


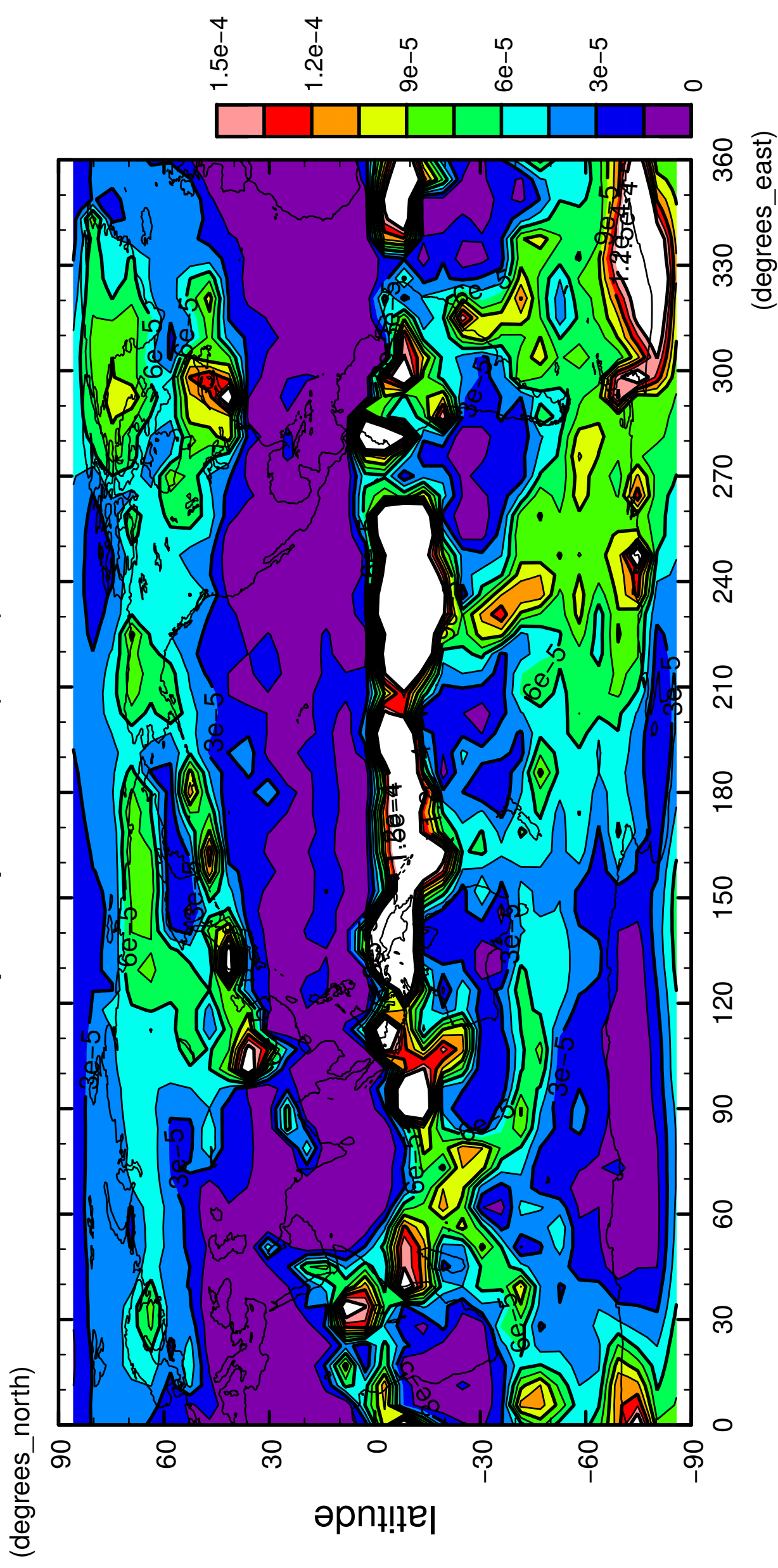
1/12

precipitation (rain)



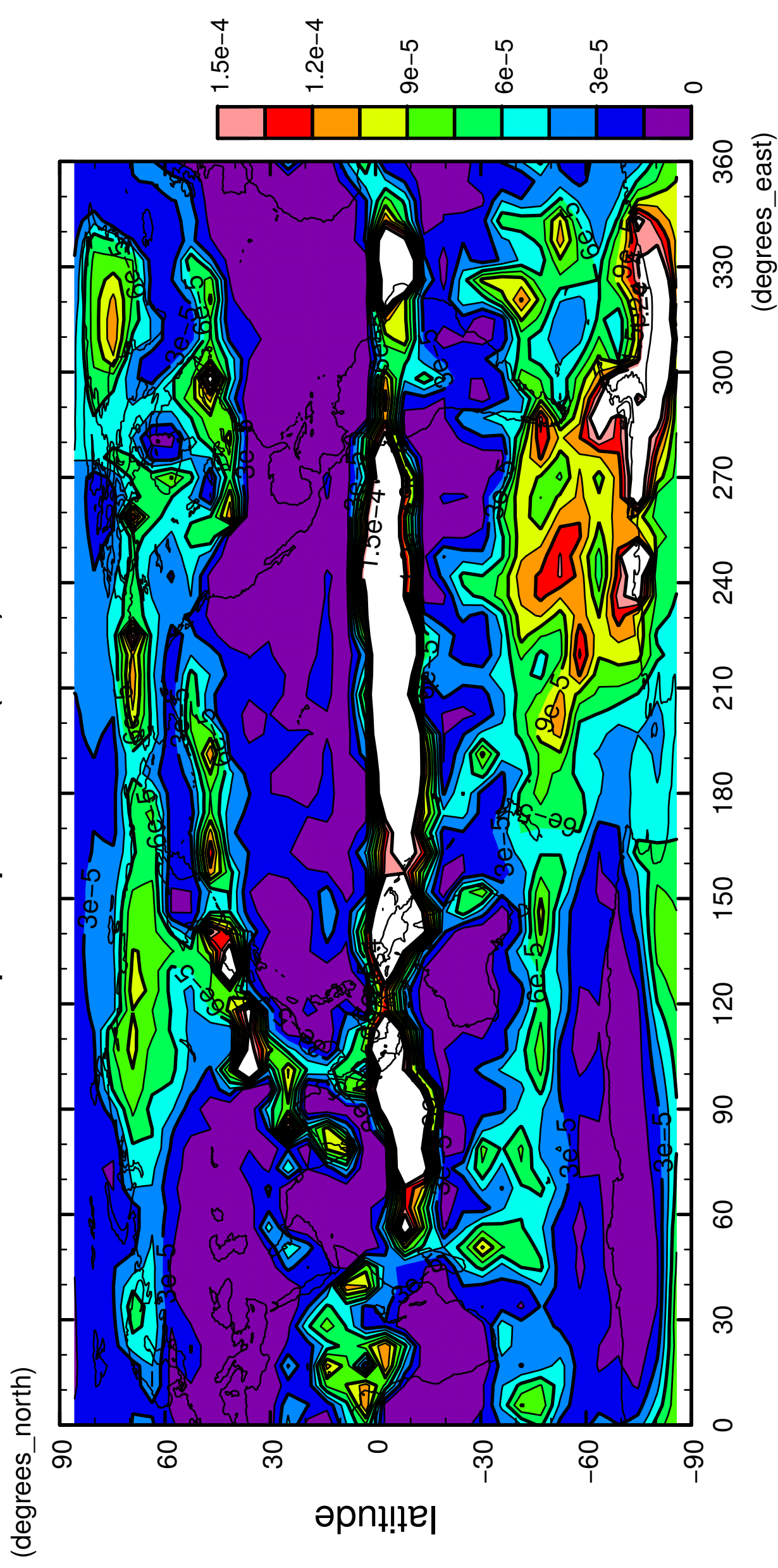
2/12

precipitation (rain)



3/12

precipitation (rain)

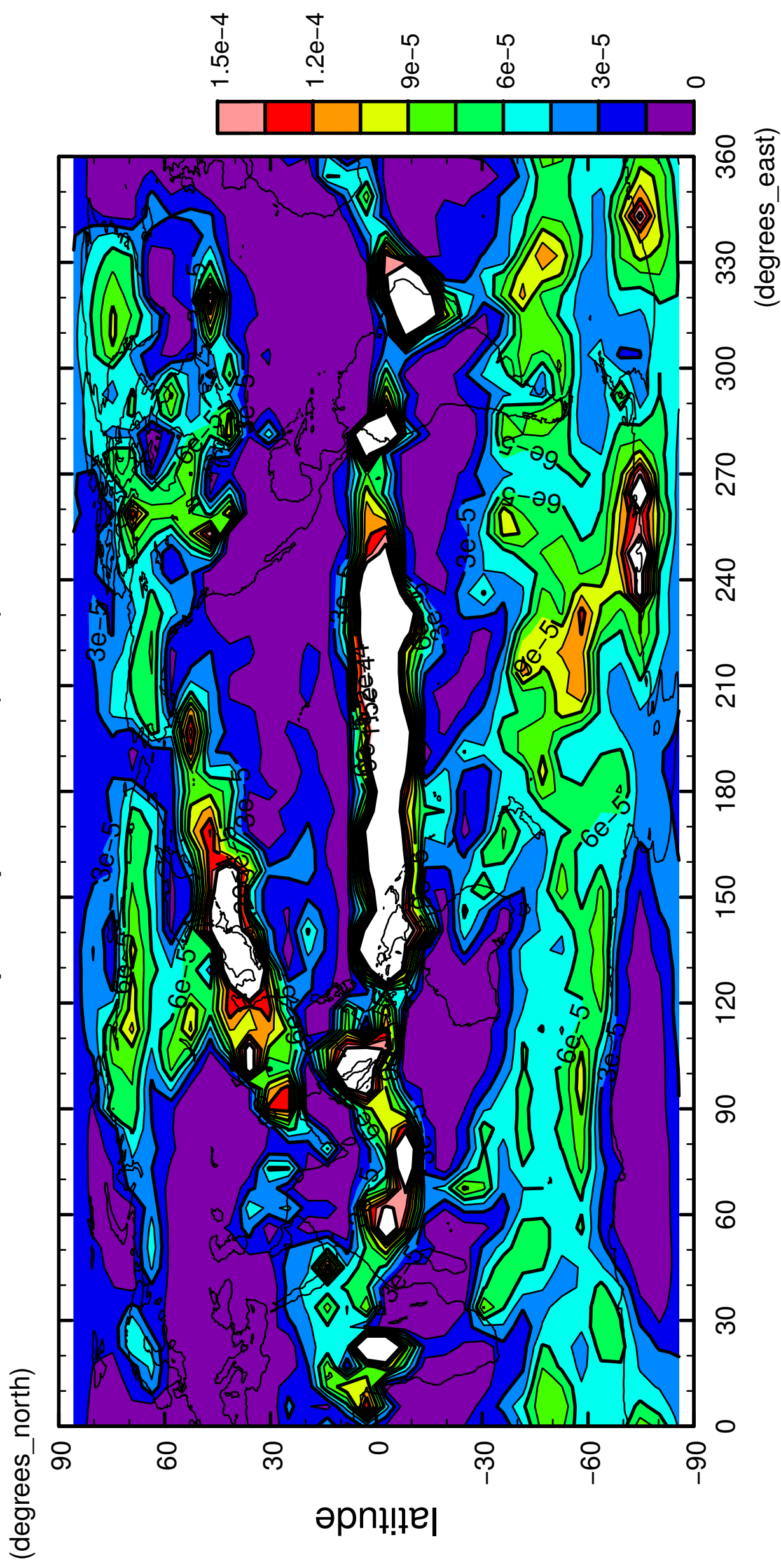


longitude

CONTOUR INTERVAL = 1.500E-05

4/12

precipitation (rain)

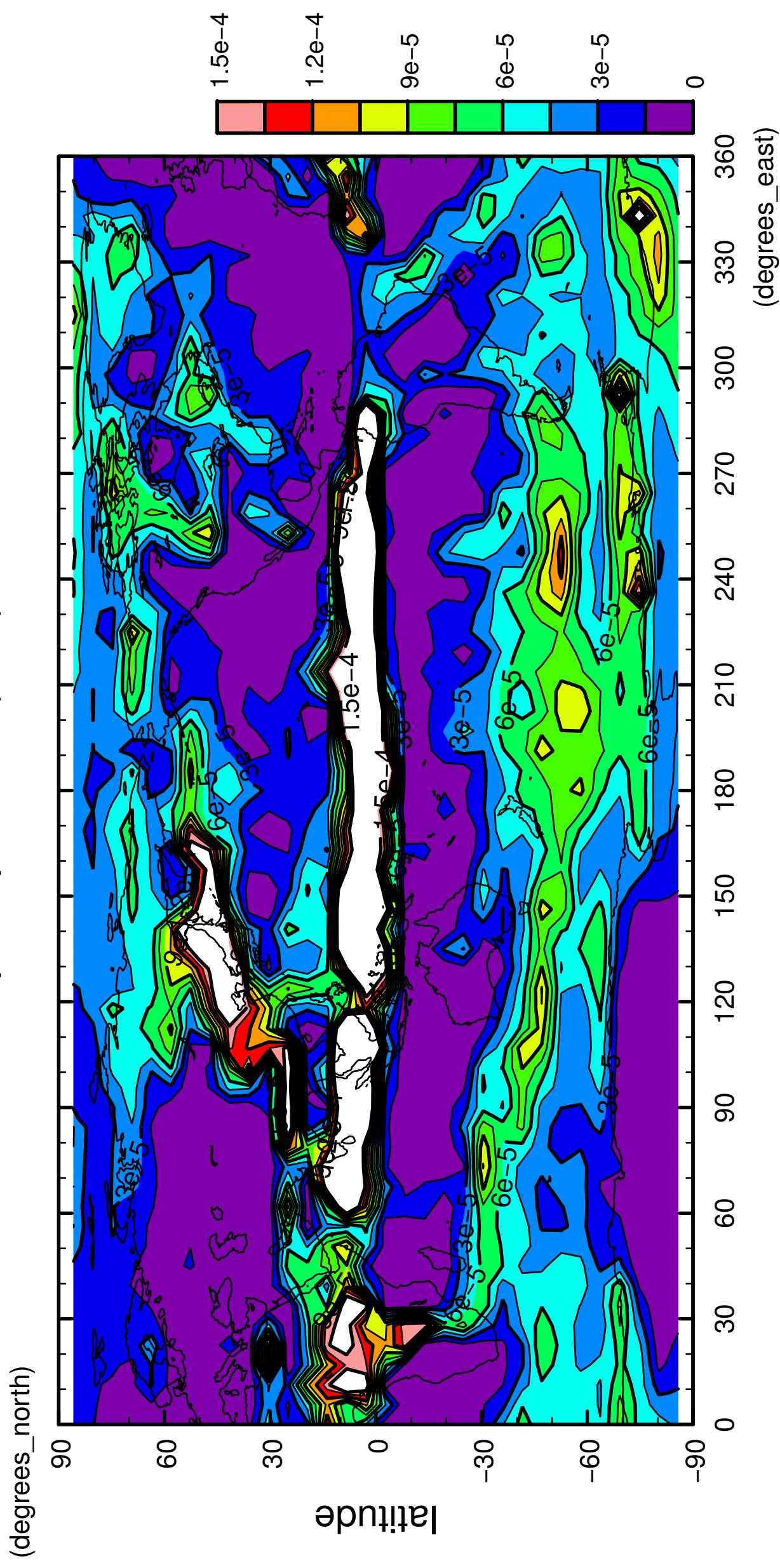


longitude

CONTOUR INTERVAL = 1.500E-05

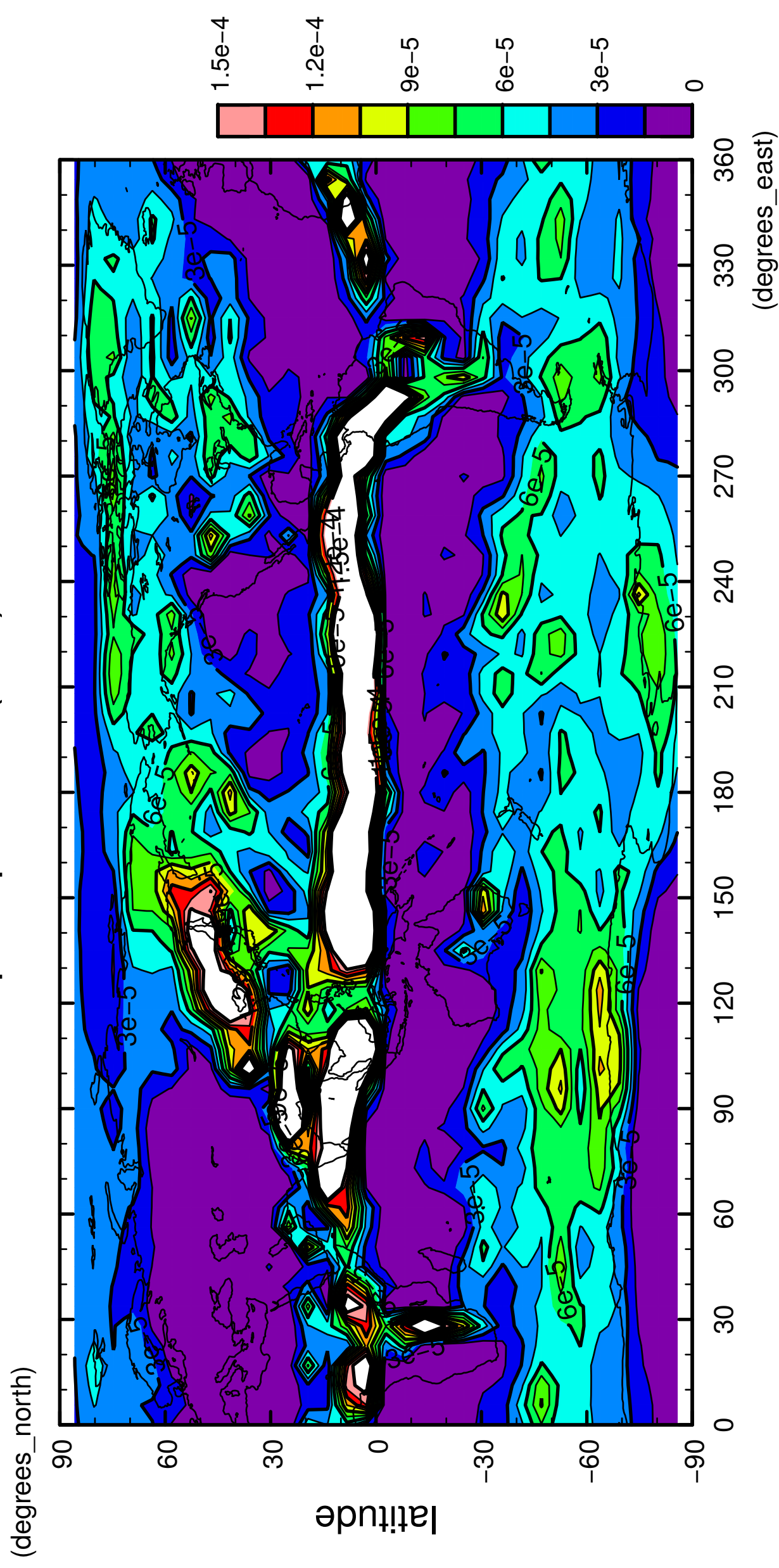
5/12

precipitation (rain)



6/12

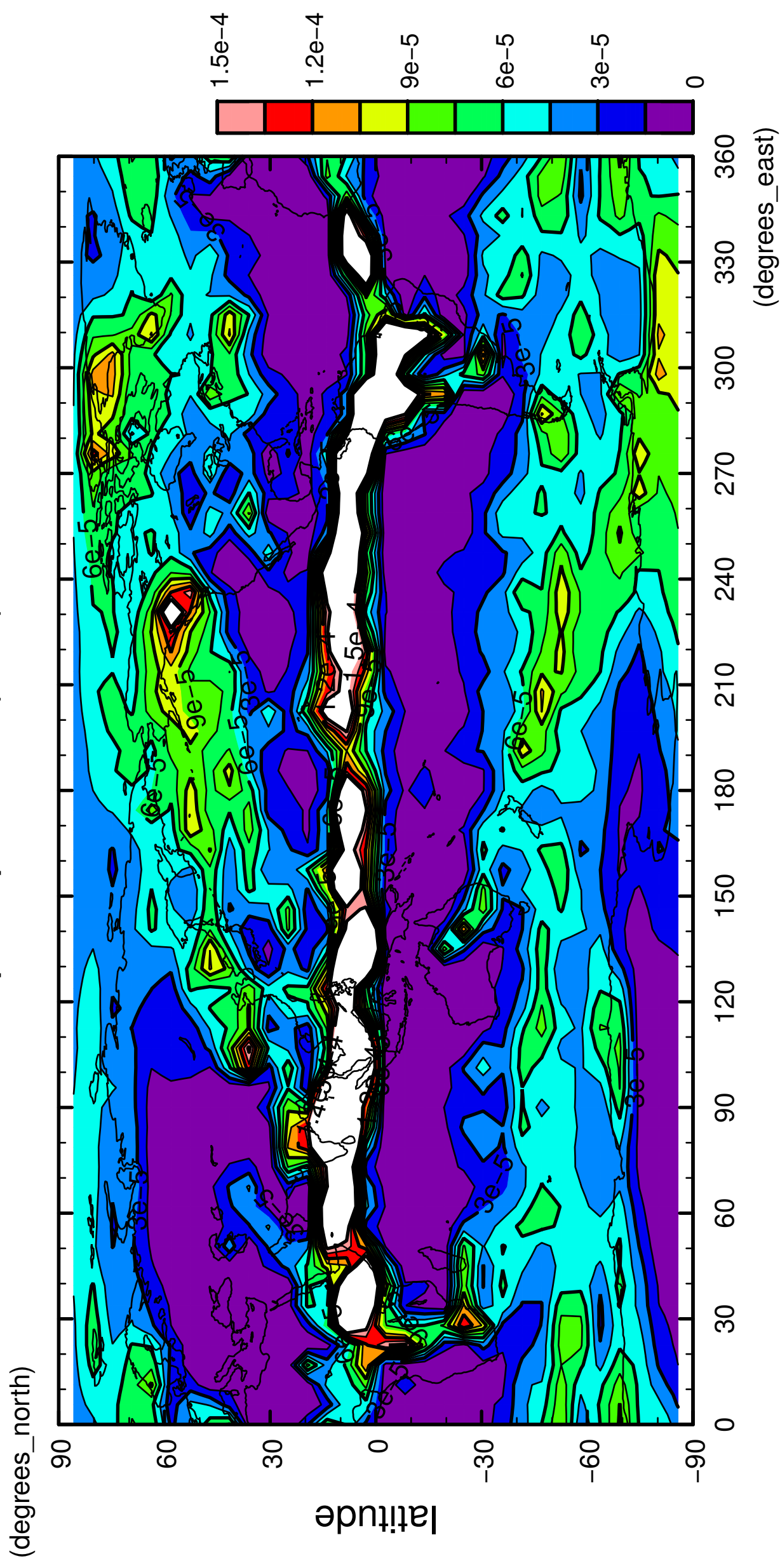
precipitation (rain)



longitude
CONTOUR INTERVAL = 1.500E-05

7/12

precipitation (rain)

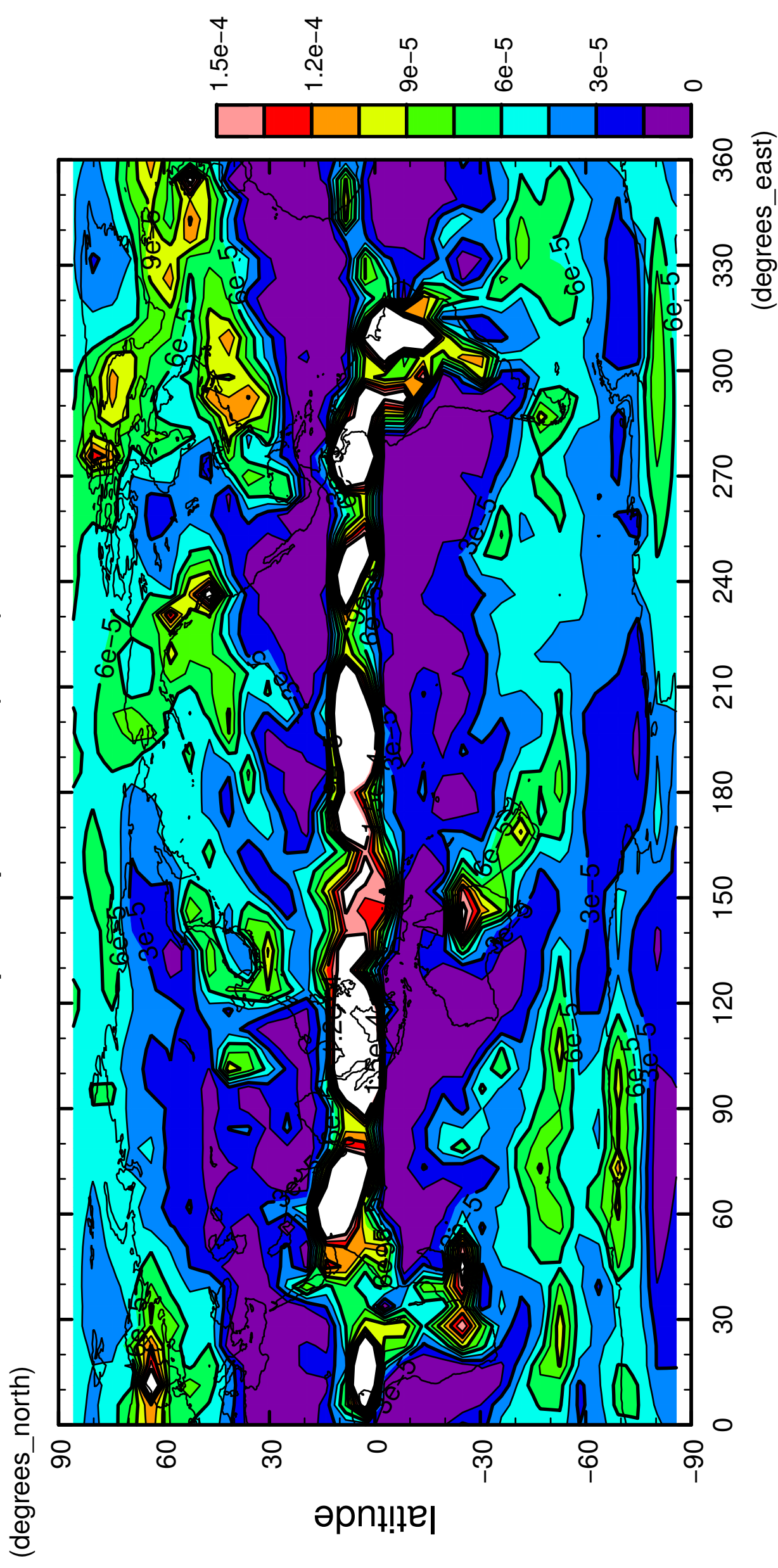


longitude

CONTOUR INTERVAL = 1.500E-05

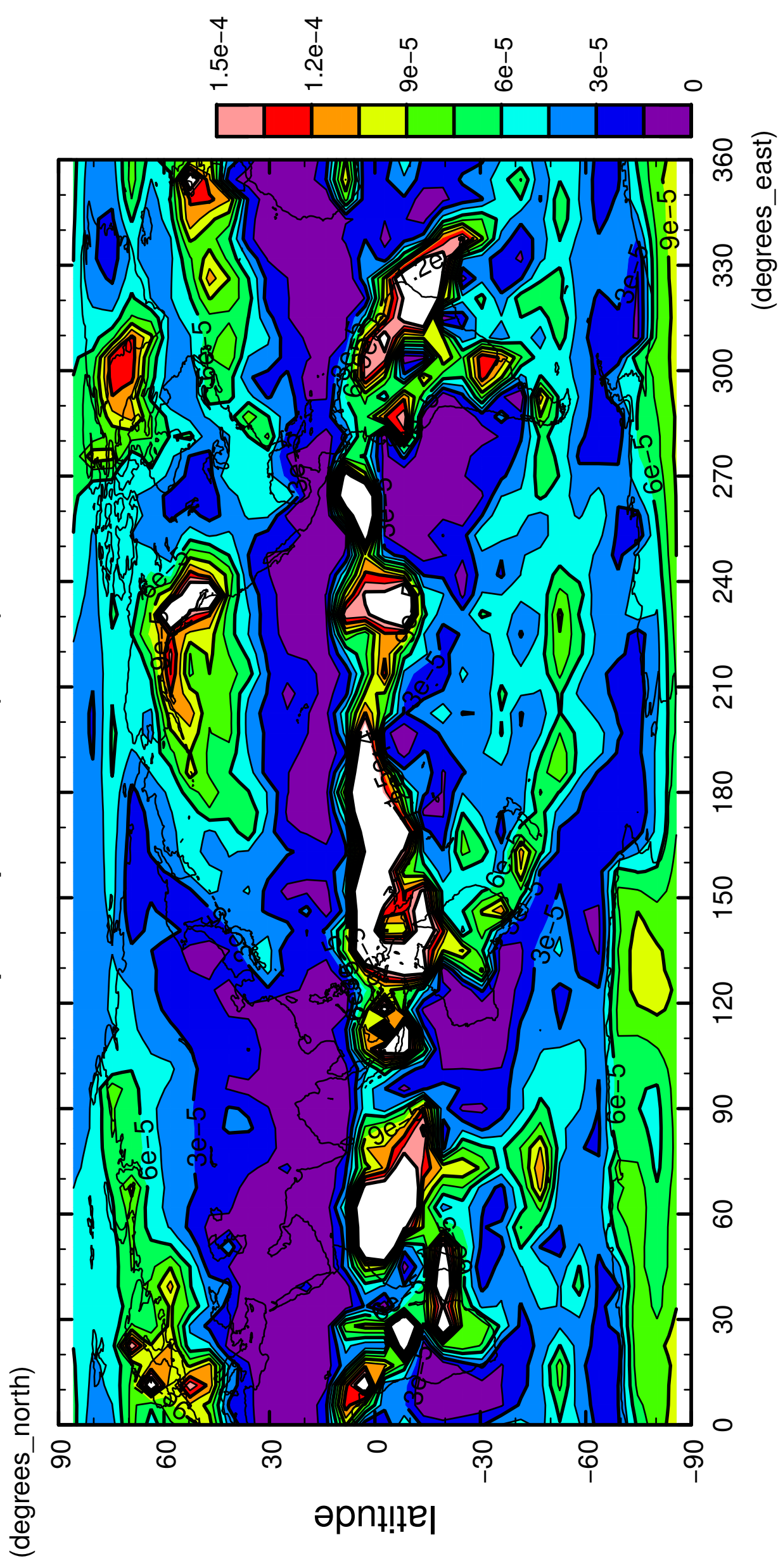
8/12

precipitation (rain)



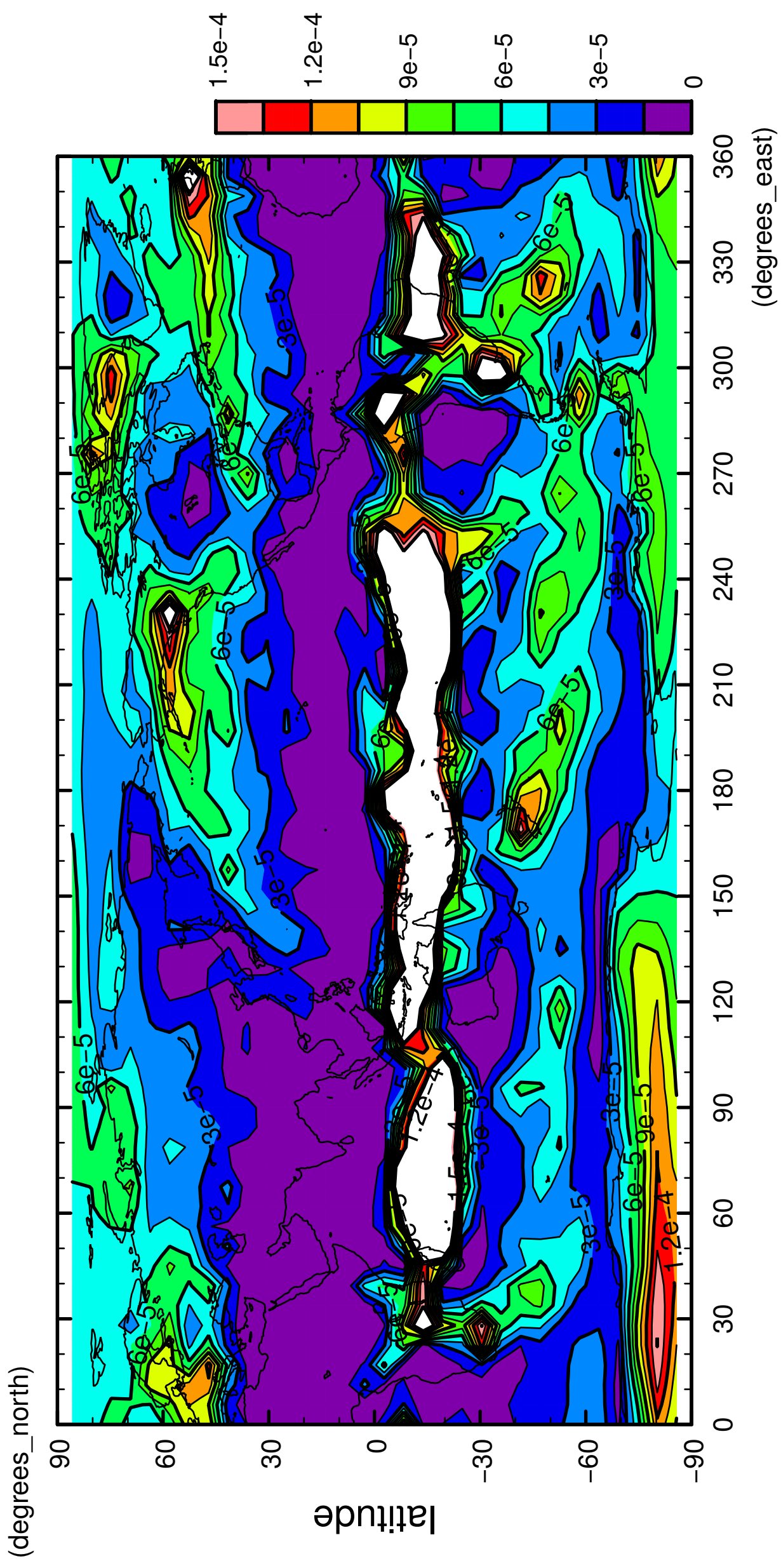
9/12

precipitation (rain)



10/12

precipitation (rain)

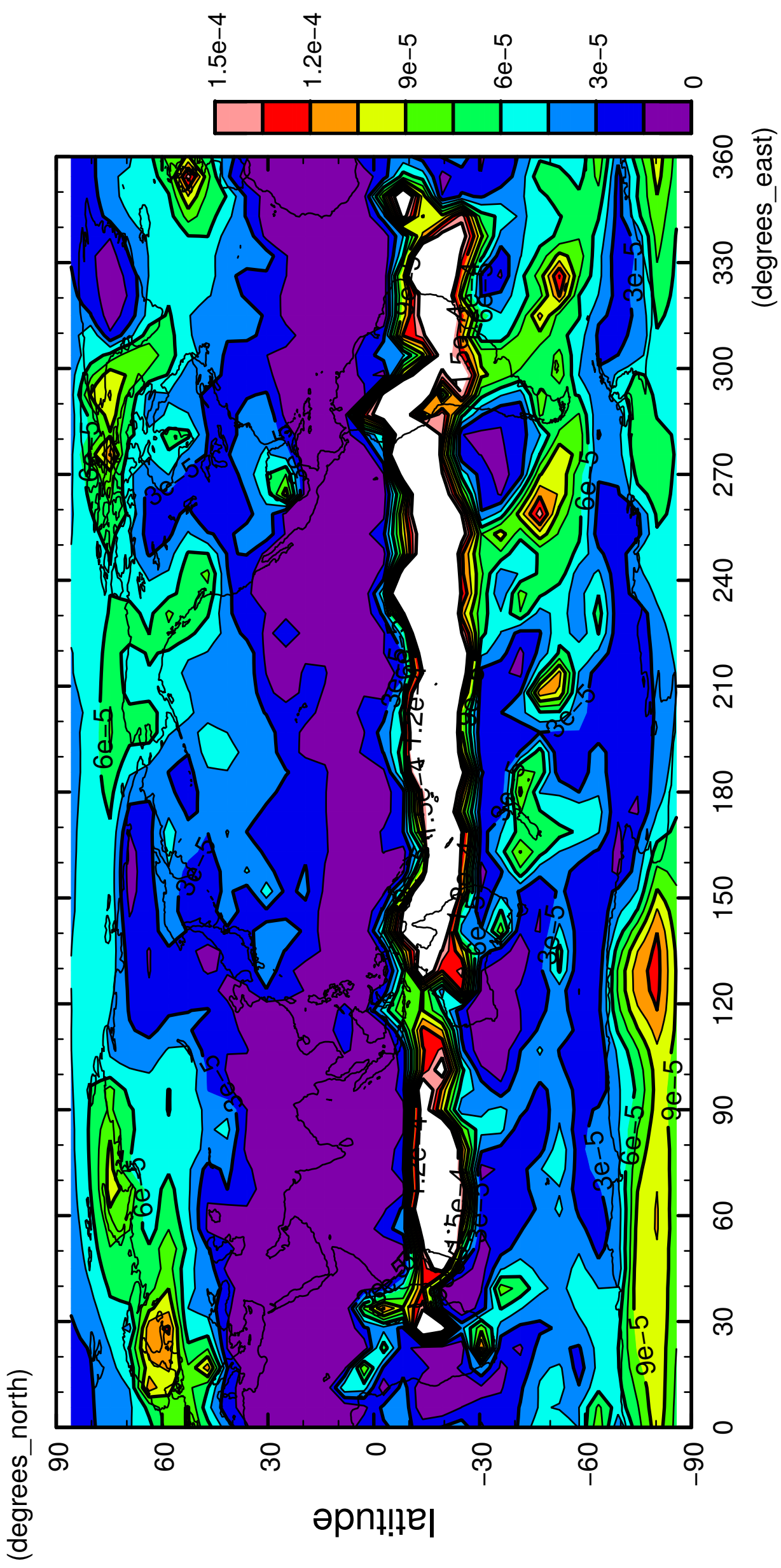


longitude

CONTOUR INTERVAL = $1.500E-05$

11/12

precipitation (rain)



12/12

precipitation (rain)

