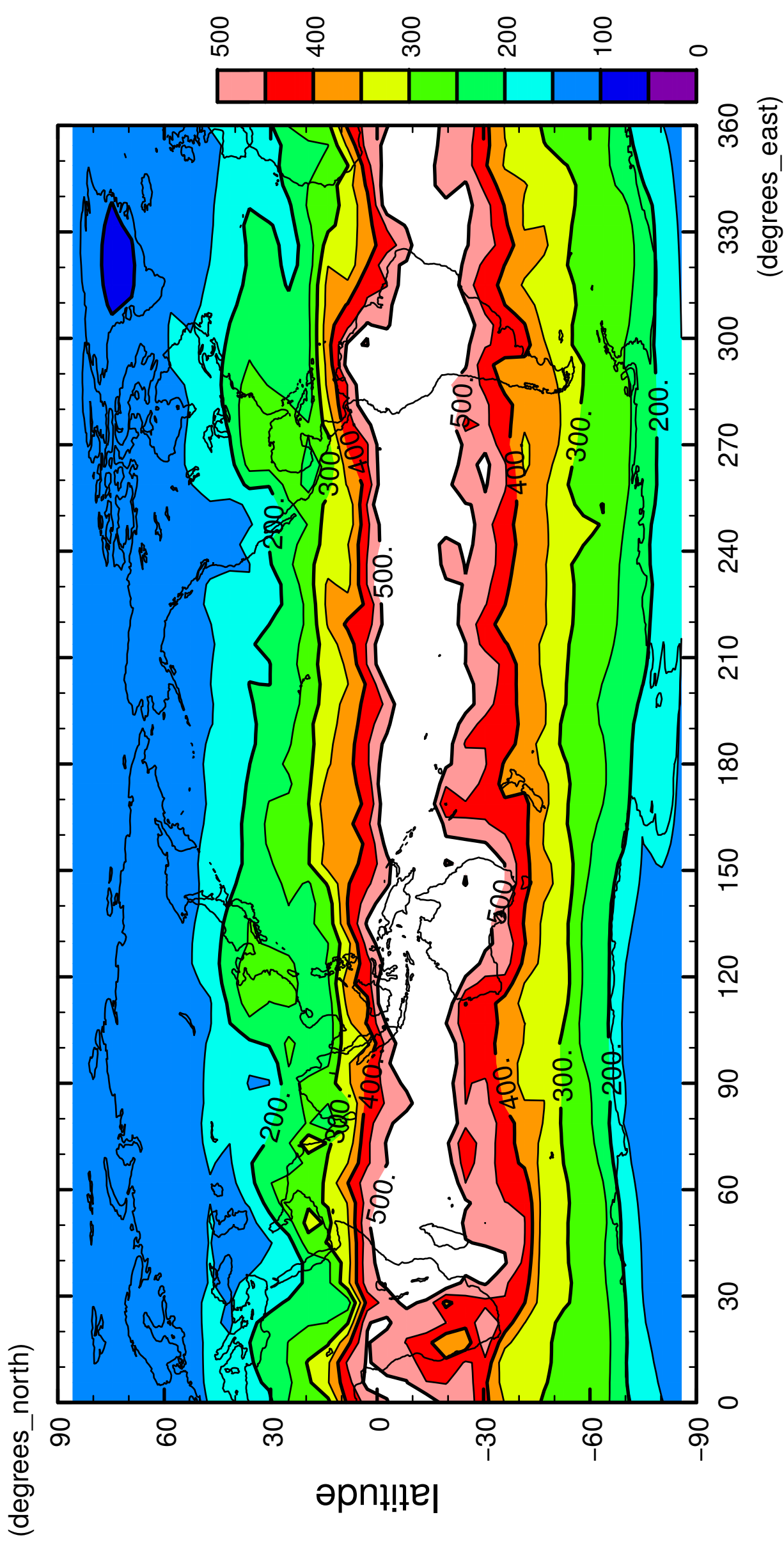


1/12

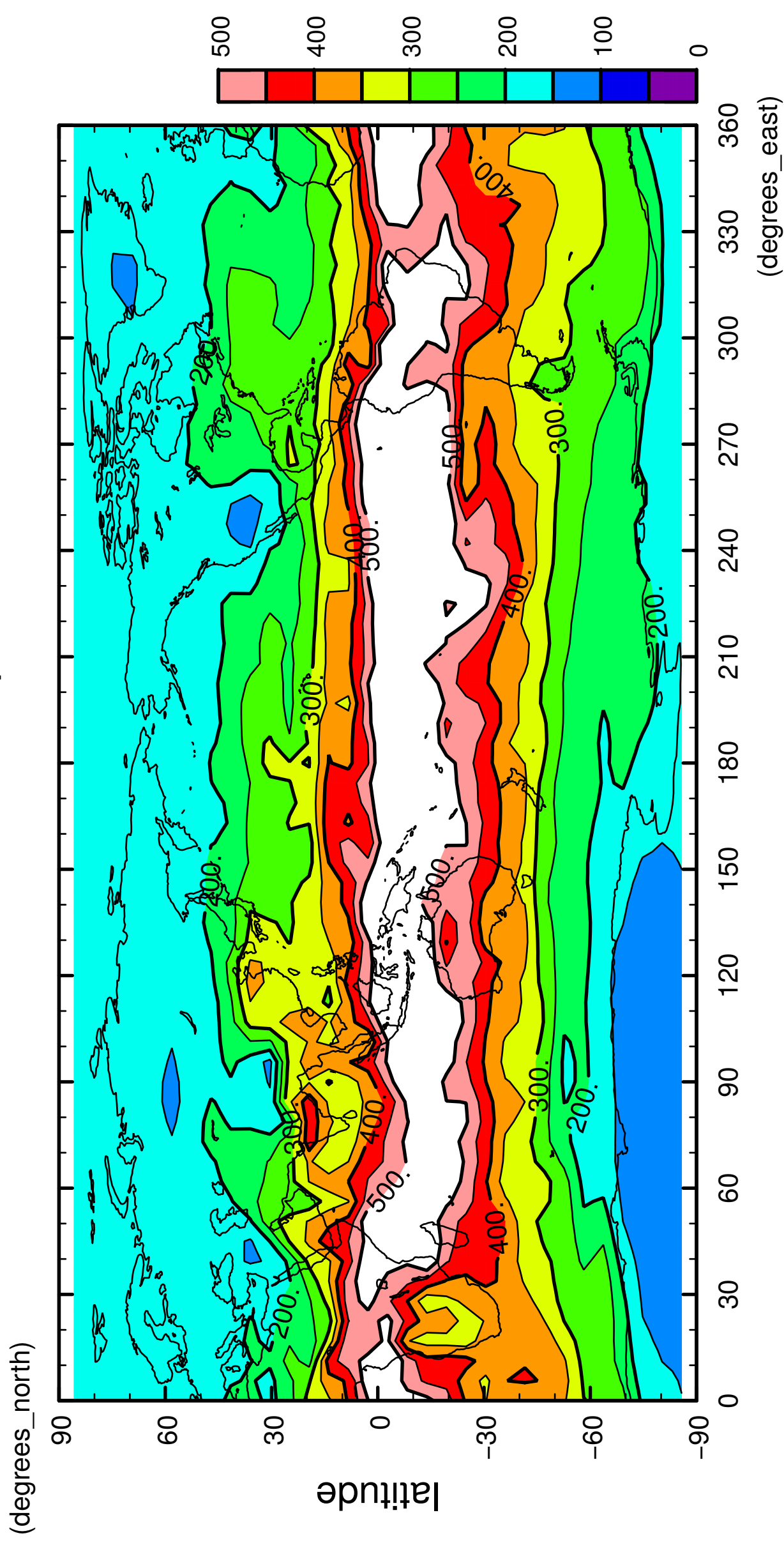
# QH2OVap



longitude  
CONTOUR INTERVAL = 5.000E+01

2/12

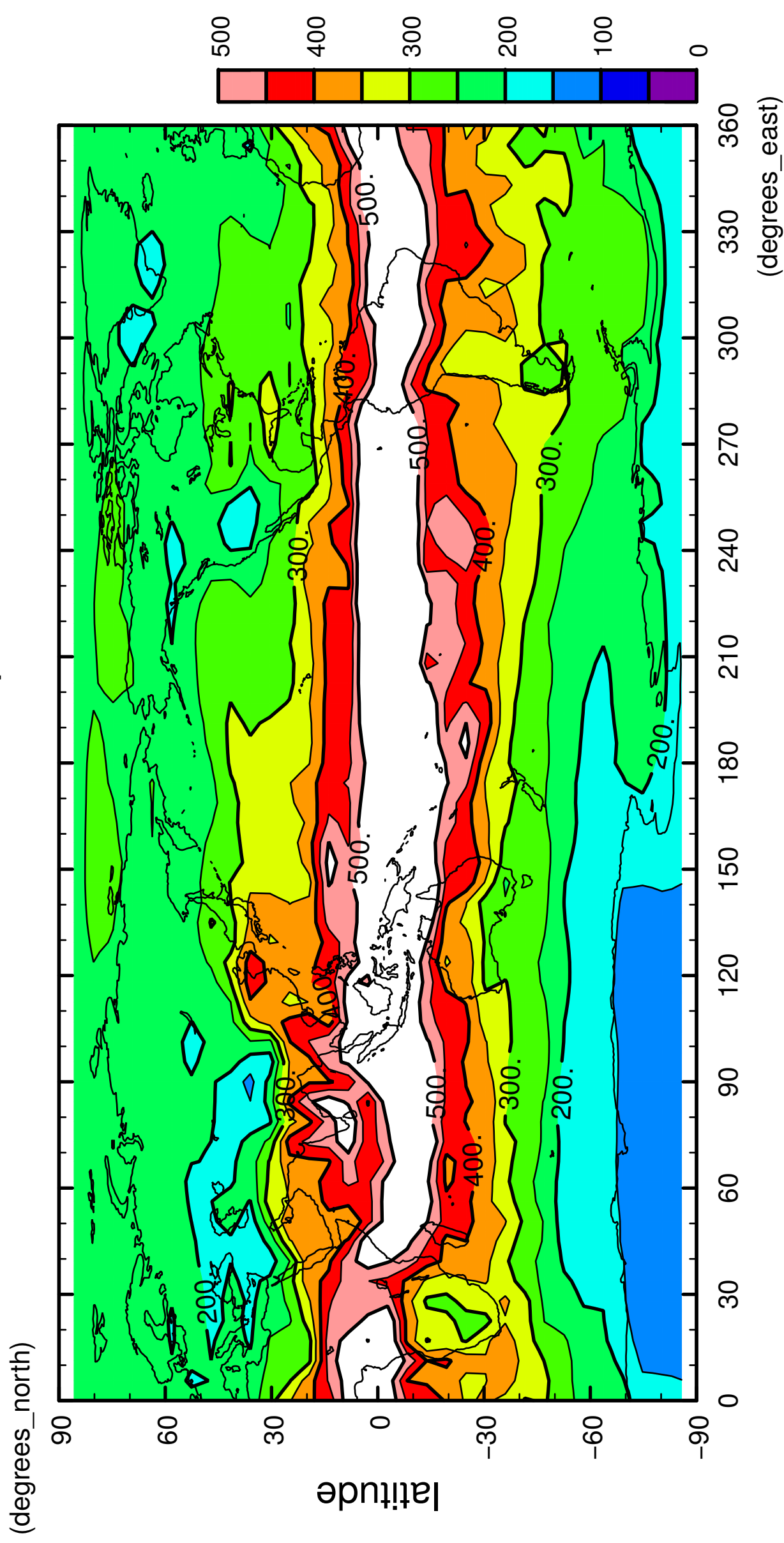
# QH2OVap



longitude  
CONTOUR INTERVAL = 5.000E+01

3/12

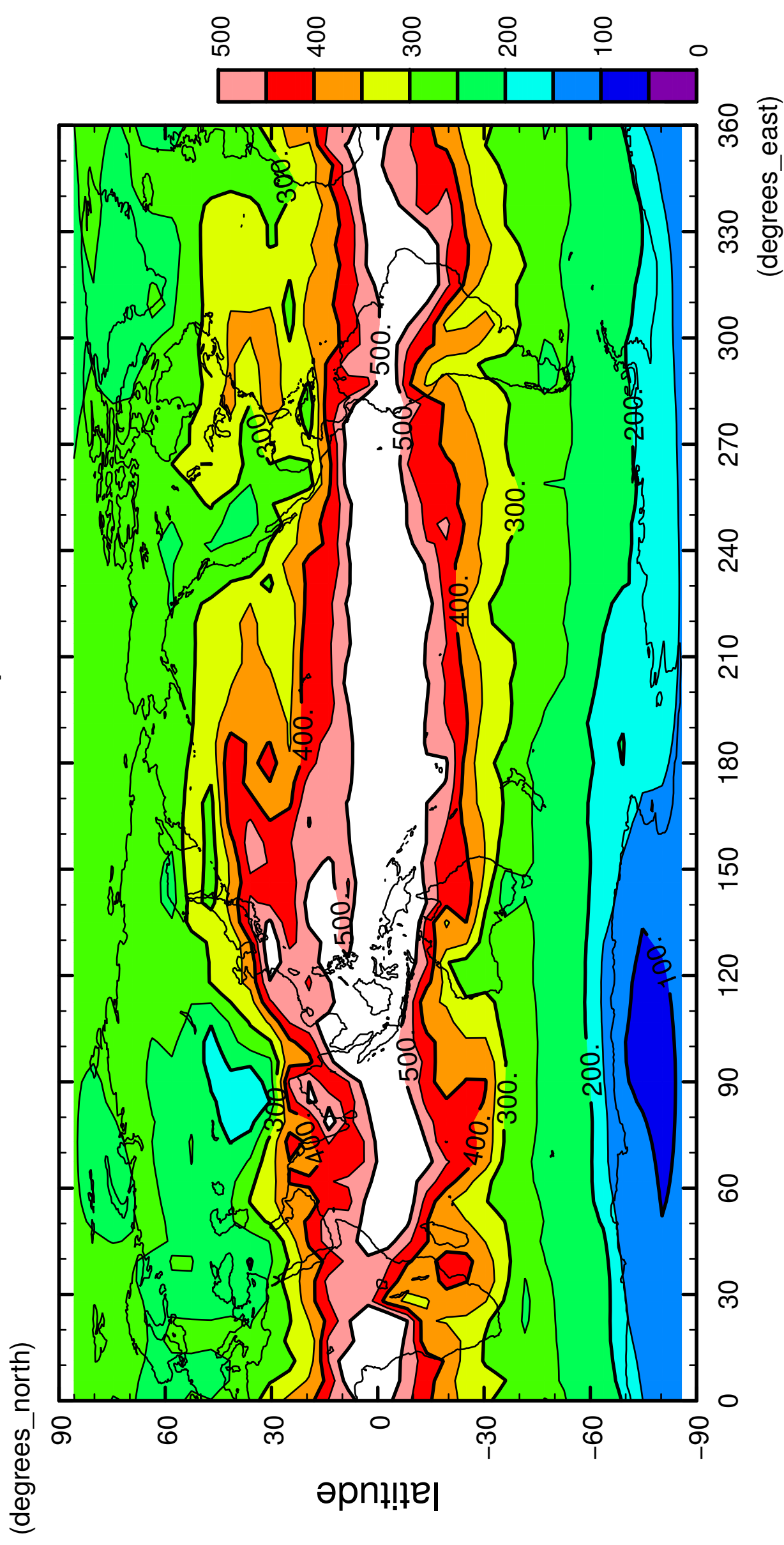
# QH2OVap



longitude  
CONTOUR INTERVAL = 5.000E+01

4/12

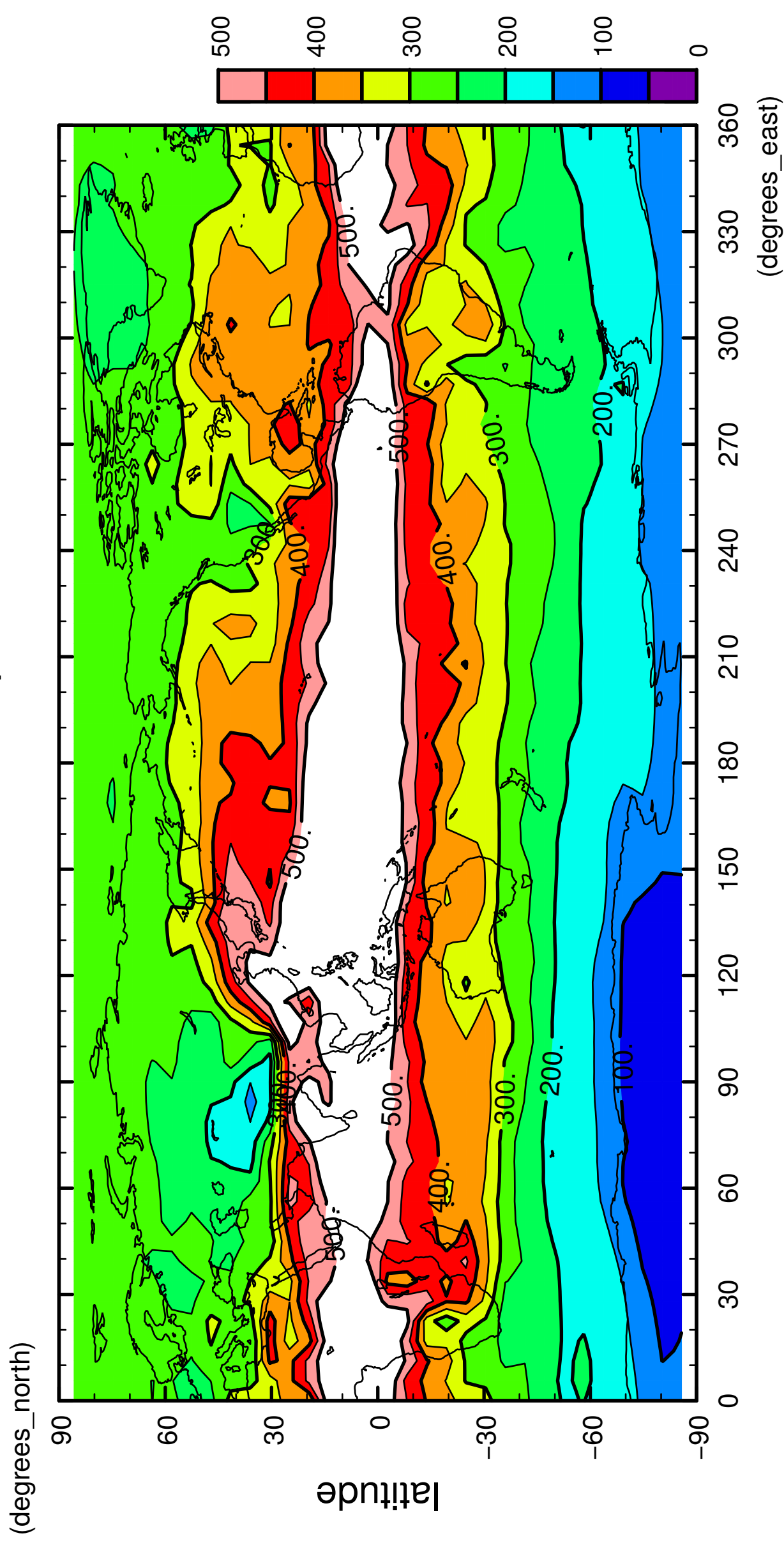
# QH2OVap



longitude  
CONTOUR INTERVAL = 5.000E+01

5/12

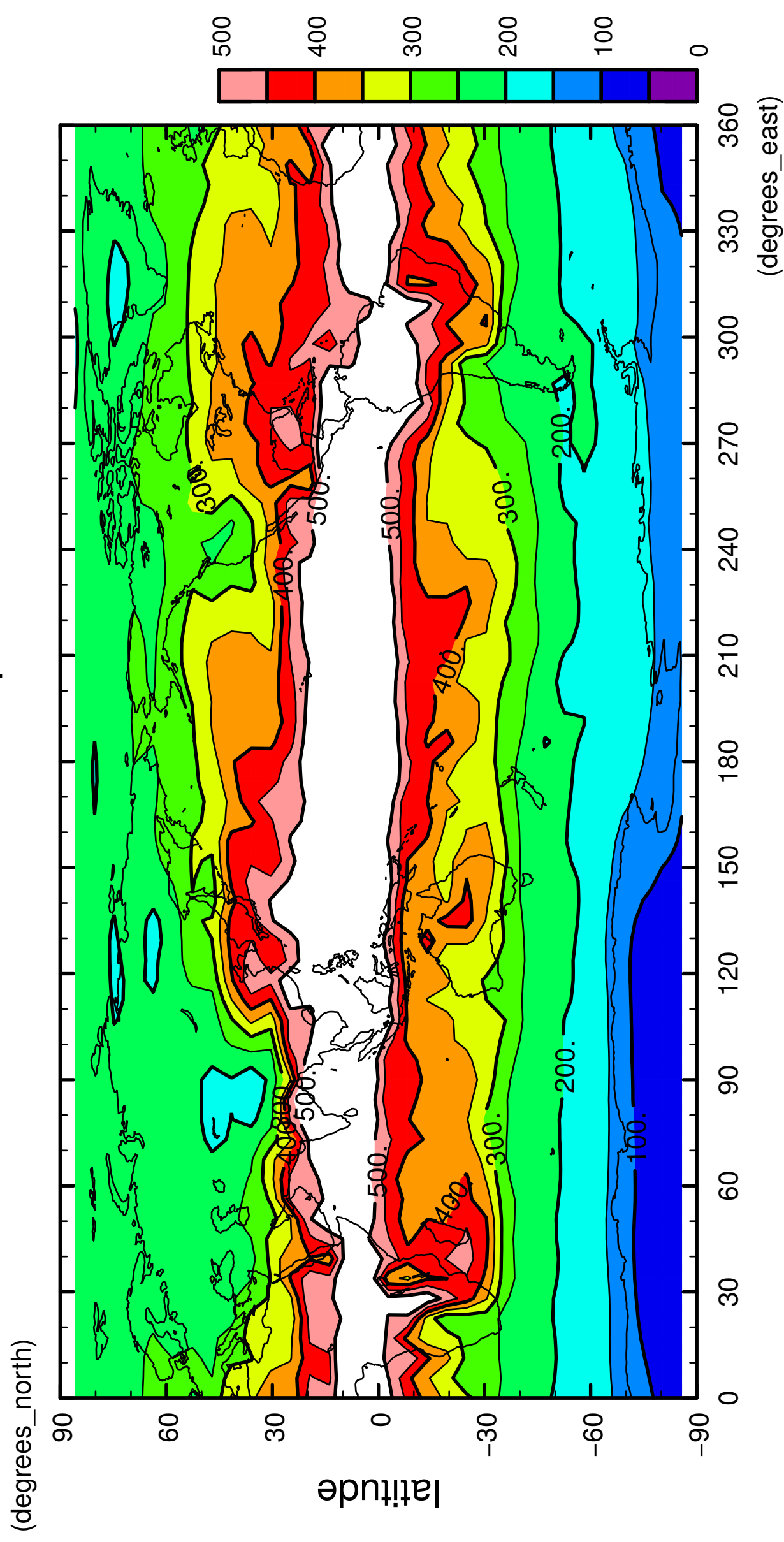
# QH2OVap



longitude  
CONTOUR INTERVAL = 5.000E+01

6/12

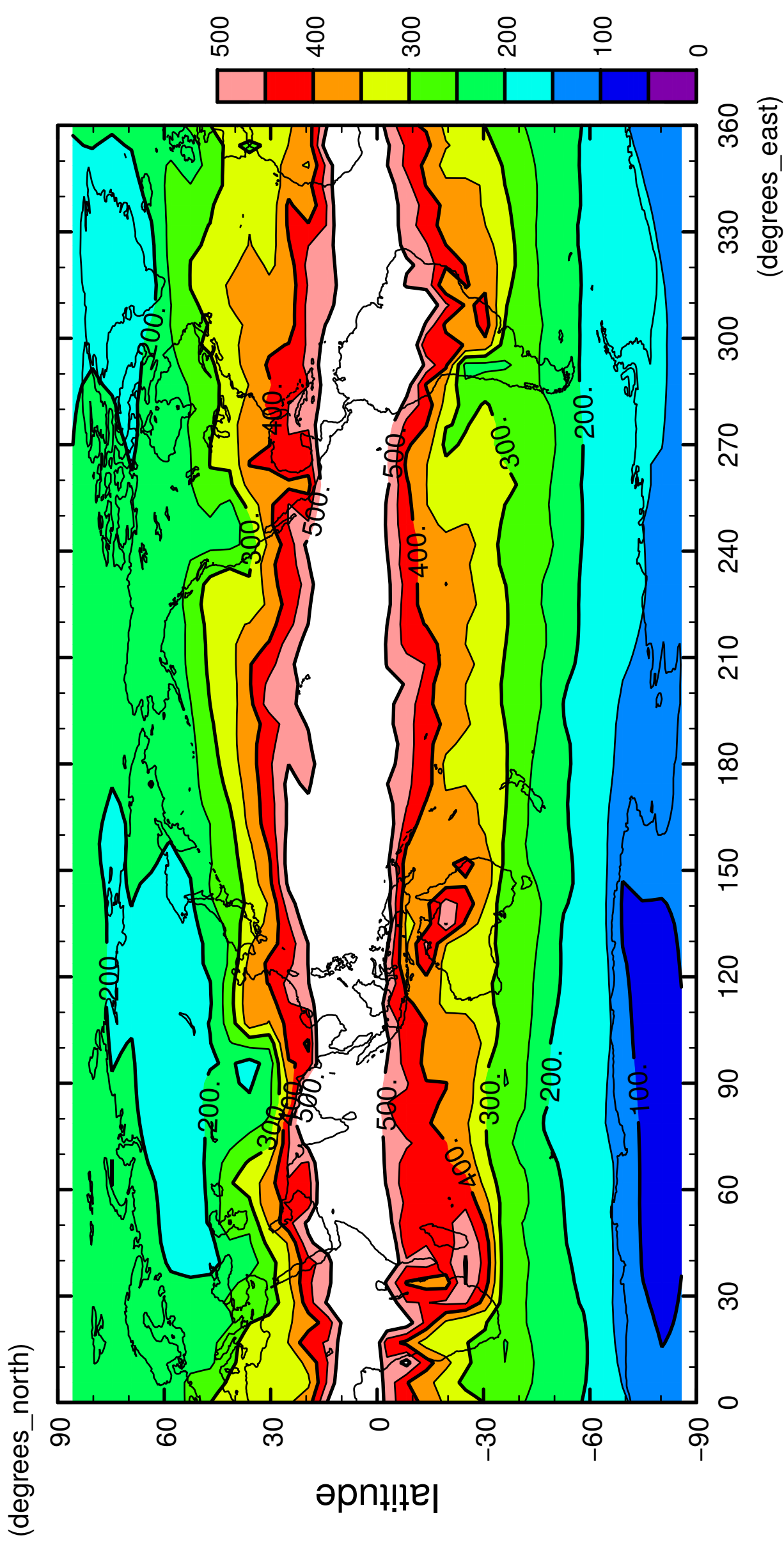
QH2OVap



longitude  
CONTOUR INTERVAL = 5.000E+01

7/12

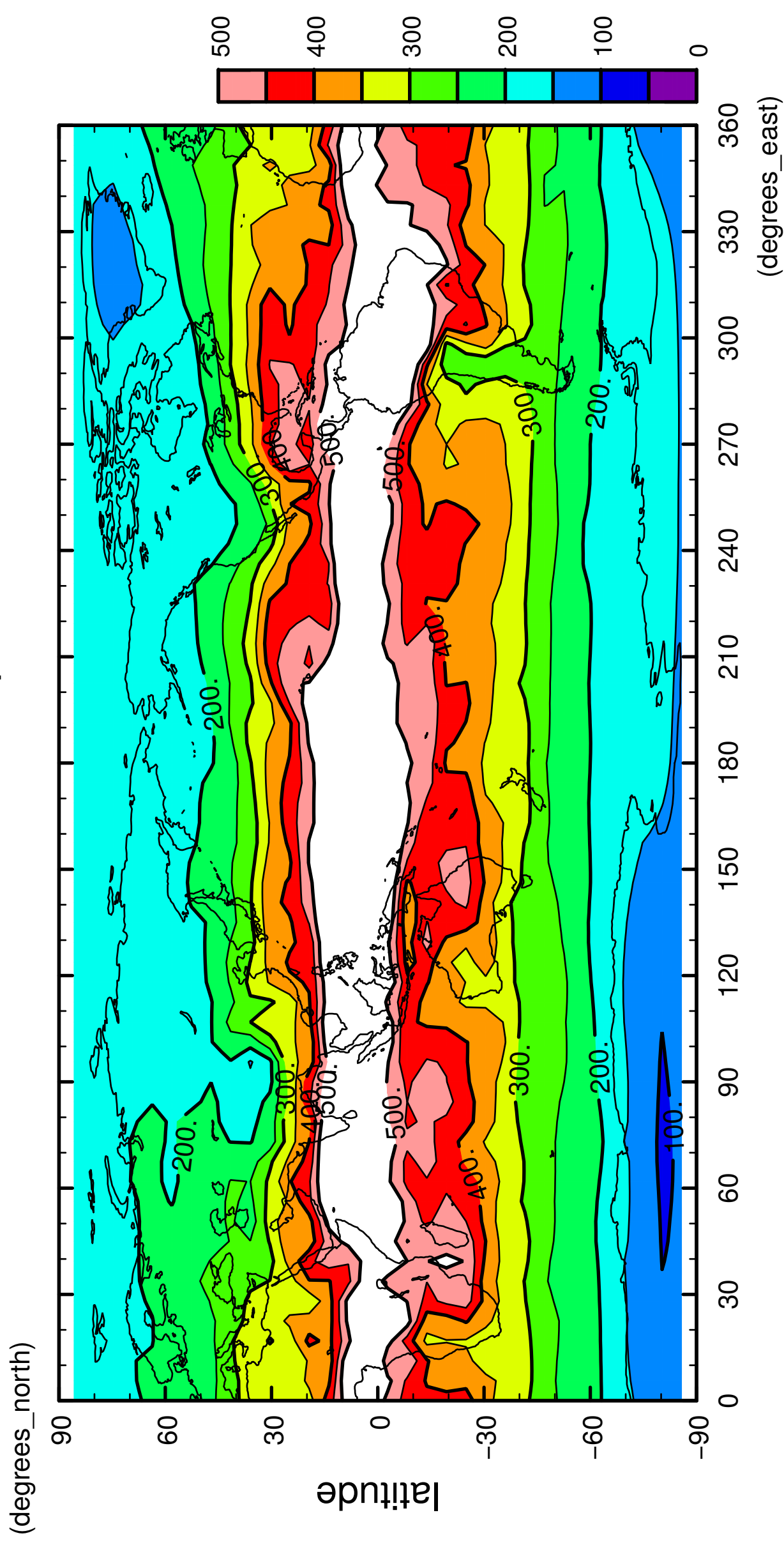
QH2OVap



longitude  
CONTOUR INTERVAL = 5.000E+01

8/12

QH2OVap



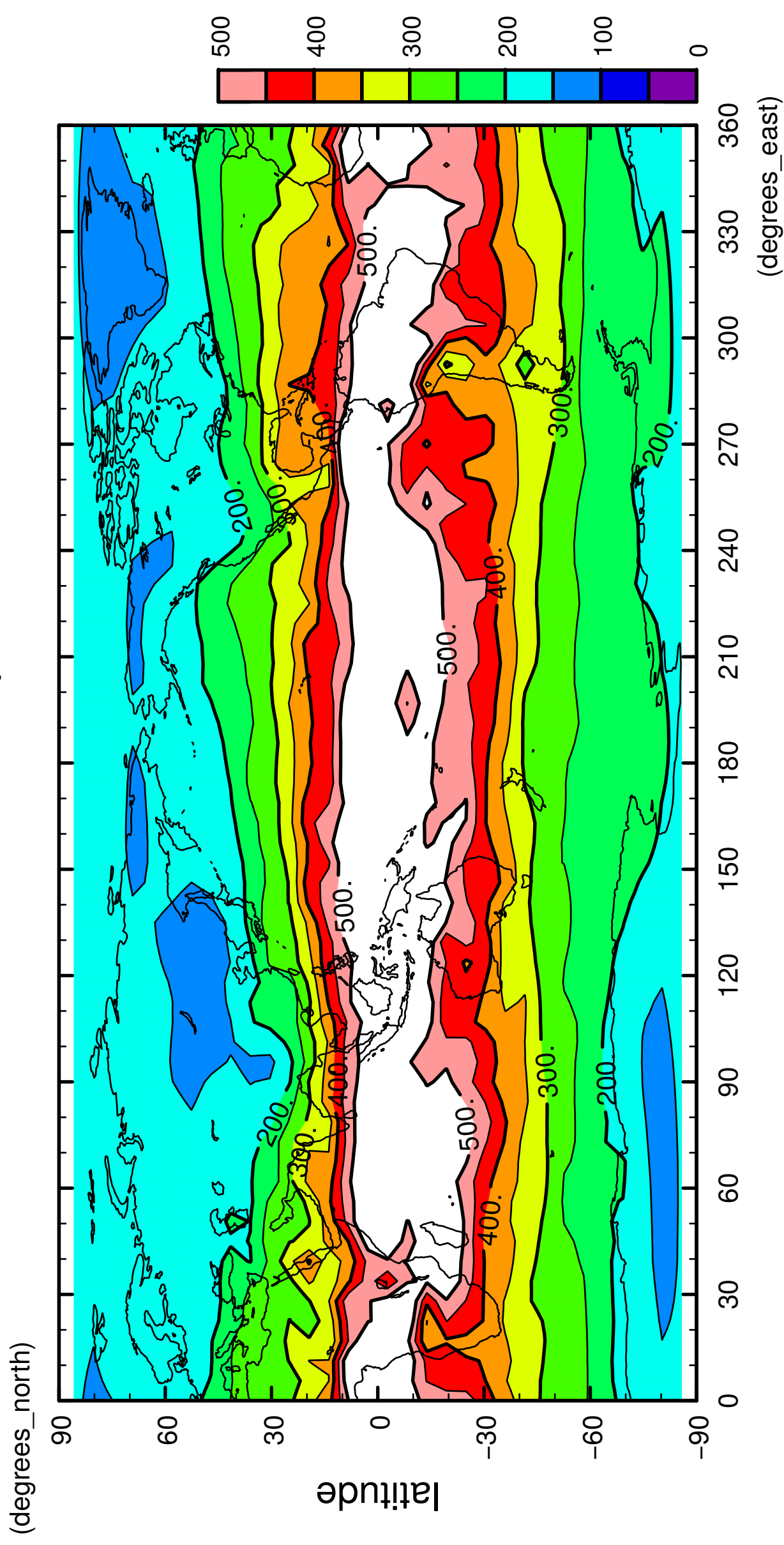
longitude

CONTOUR INTERVAL = 5.000E+01



9/12

QH2OVap

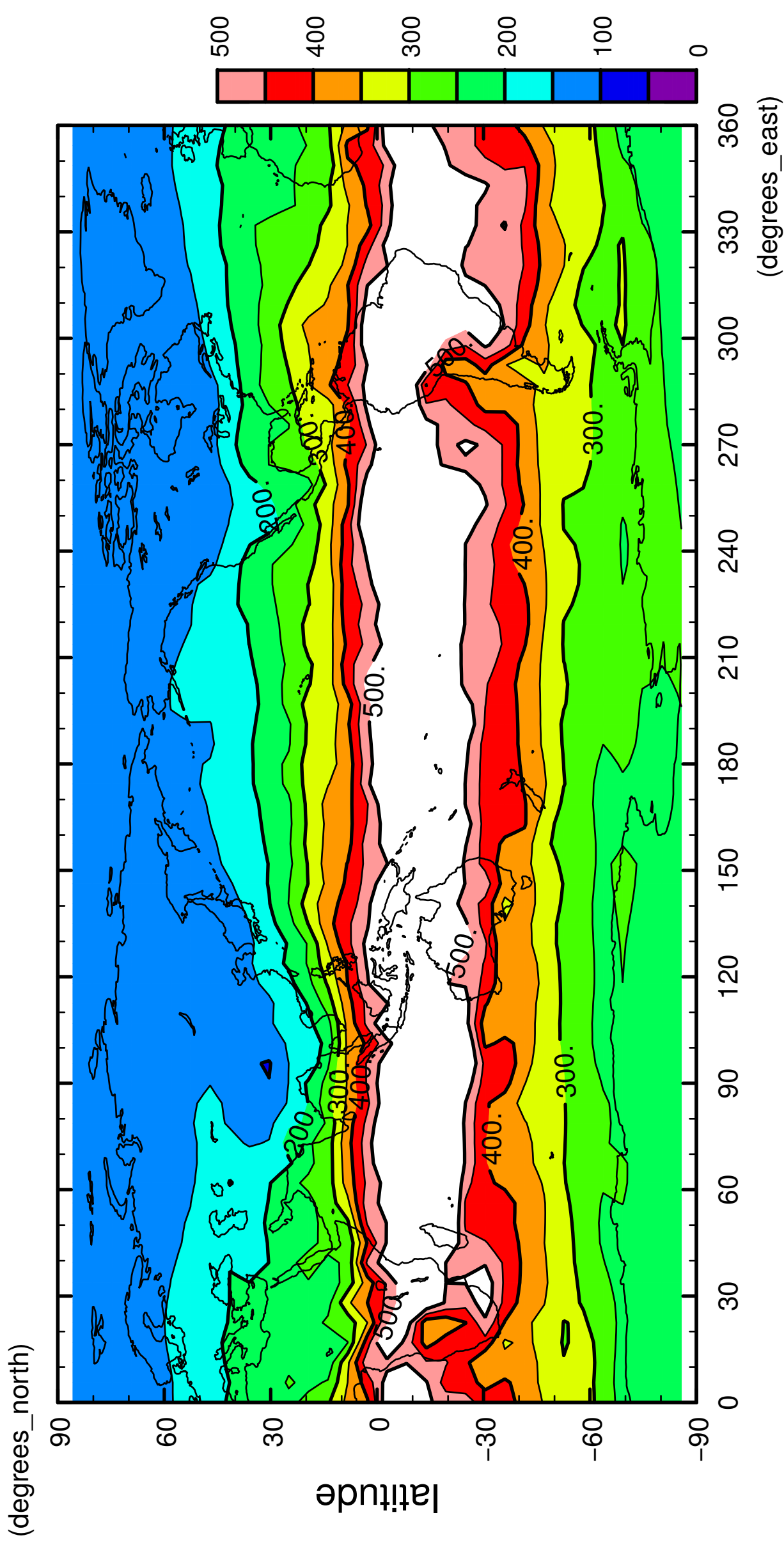


longitude

CONTOUR INTERVAL = 5.000E+01

10/12

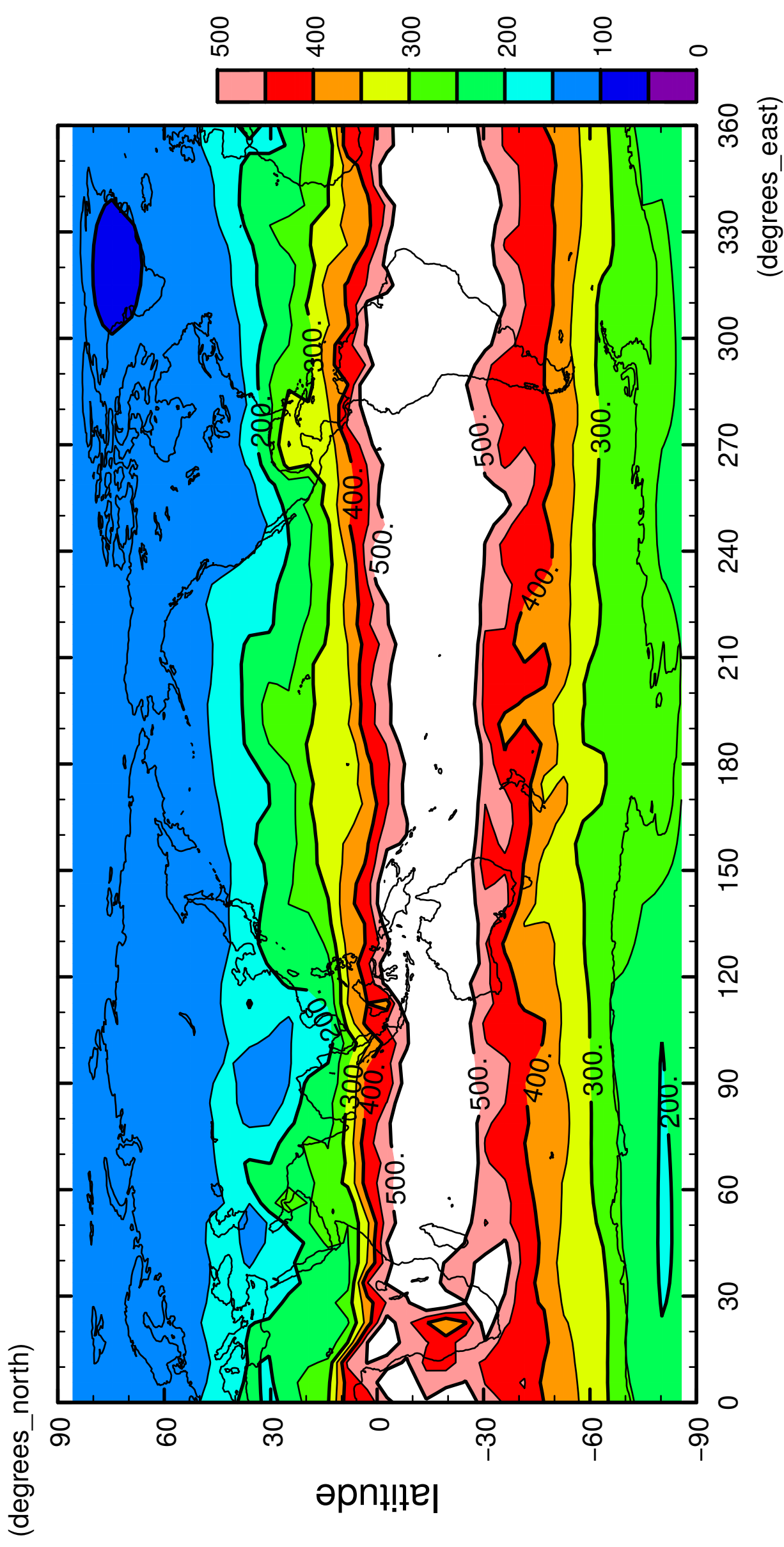
QH2OVap



longitude  
CONTOUR INTERVAL = 5.000E+01

11/12

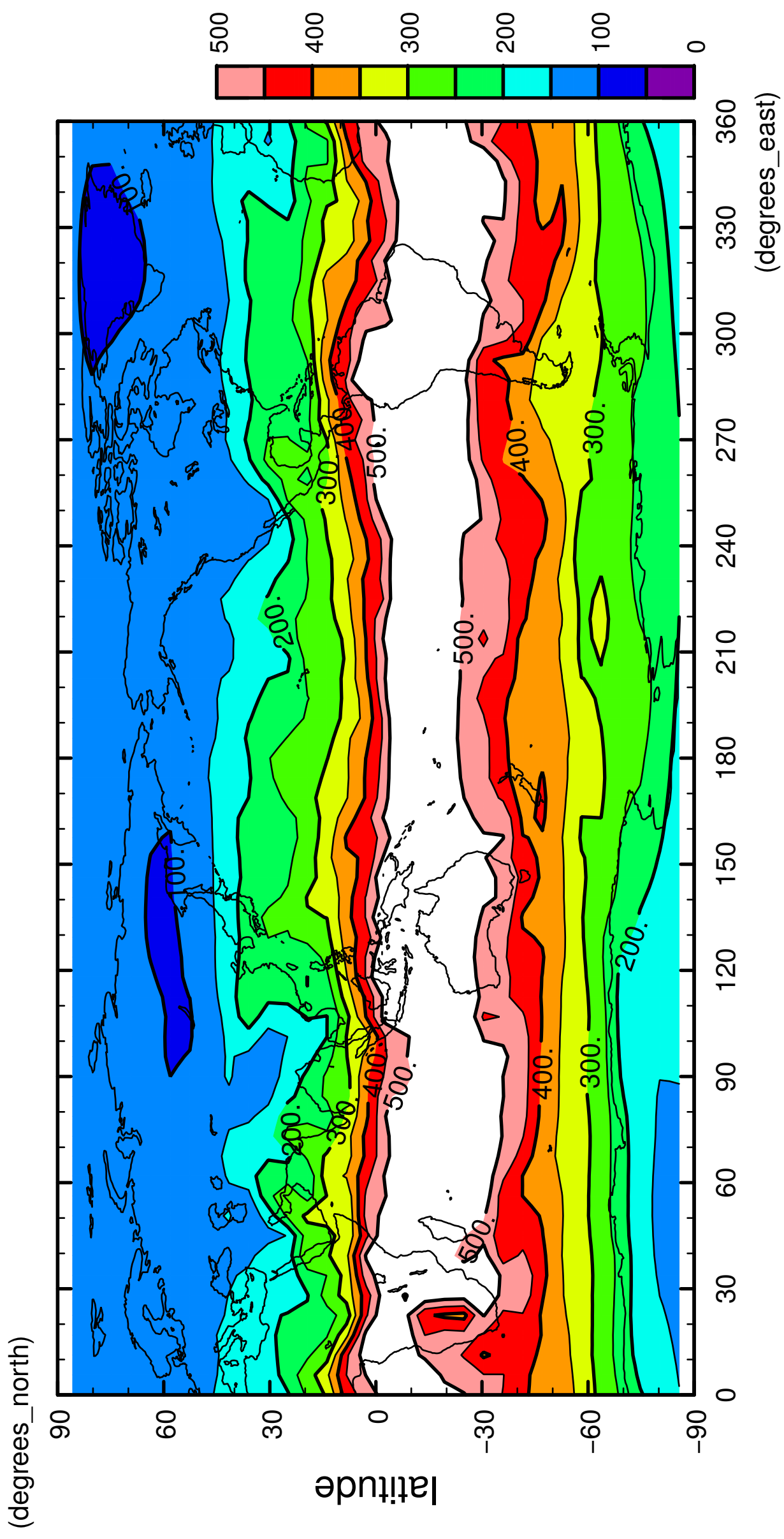
QH2OVap



longitude  
CONTOUR INTERVAL = 5.000E+01

12/12

QH2OVap



longitude  
CONTOUR INTERVAL = 5.000E+01