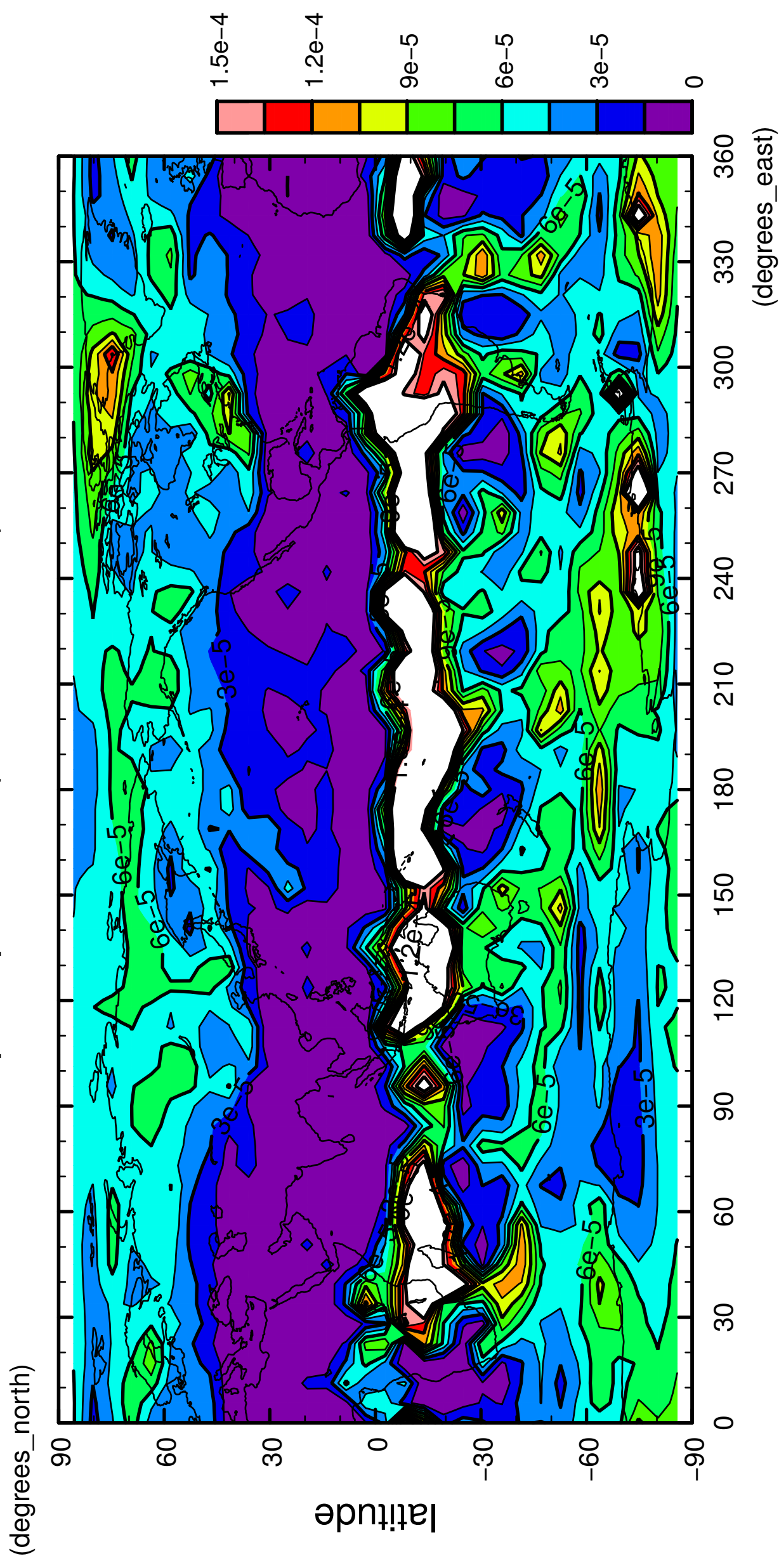


1/12

precipitation (rain + snow)

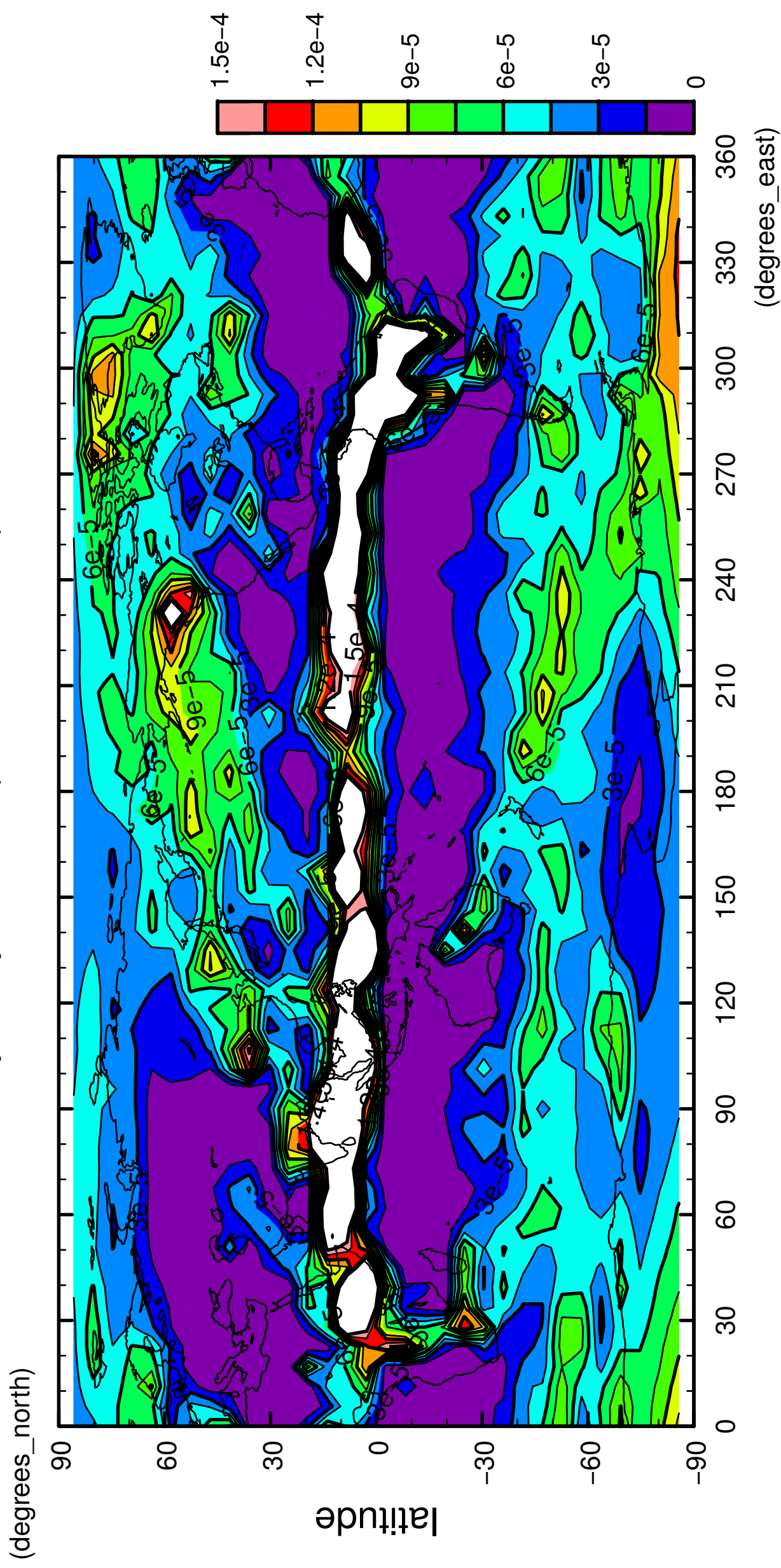


longitude

CONTOUR INTERVAL = 1.500E-05

7/12

precipitation (rain + snow)

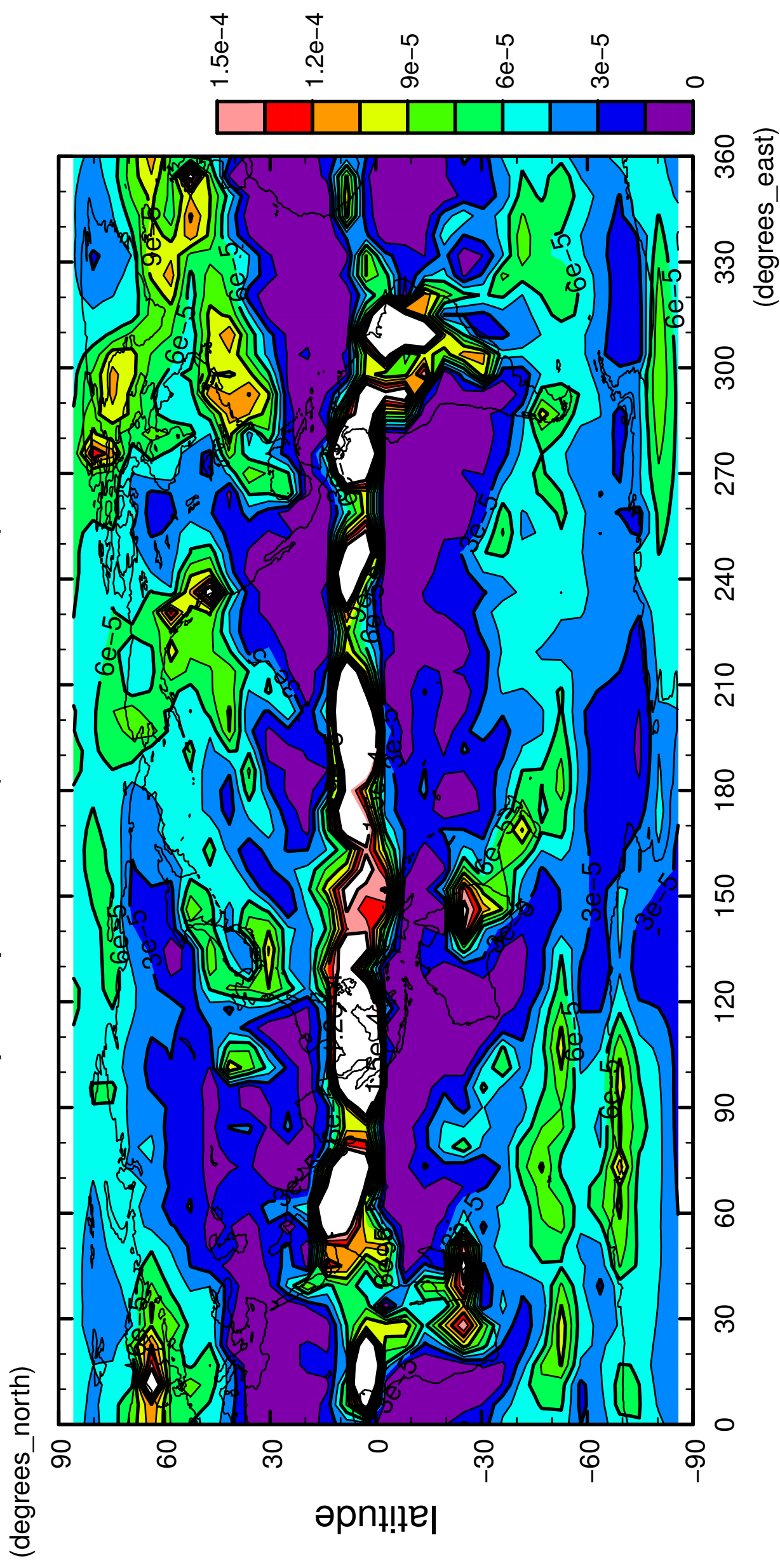


longitude

CONTOUR INTERVAL = 1.500E-05

8/12

precipitation (rain + snow)

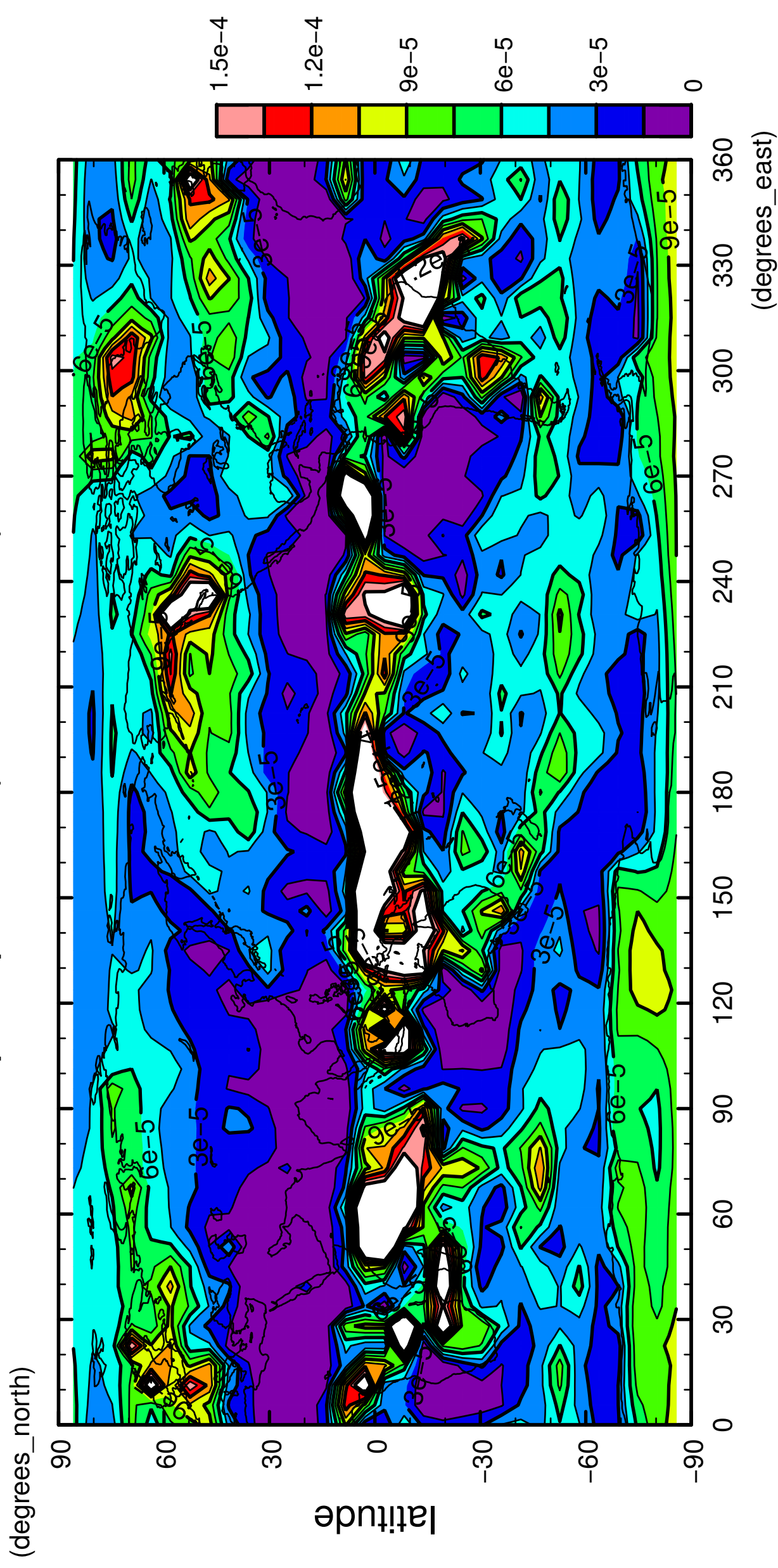


longitude

CONTOUR INTERVAL = 1.500E-05

9/12

precipitation (rain + snow)

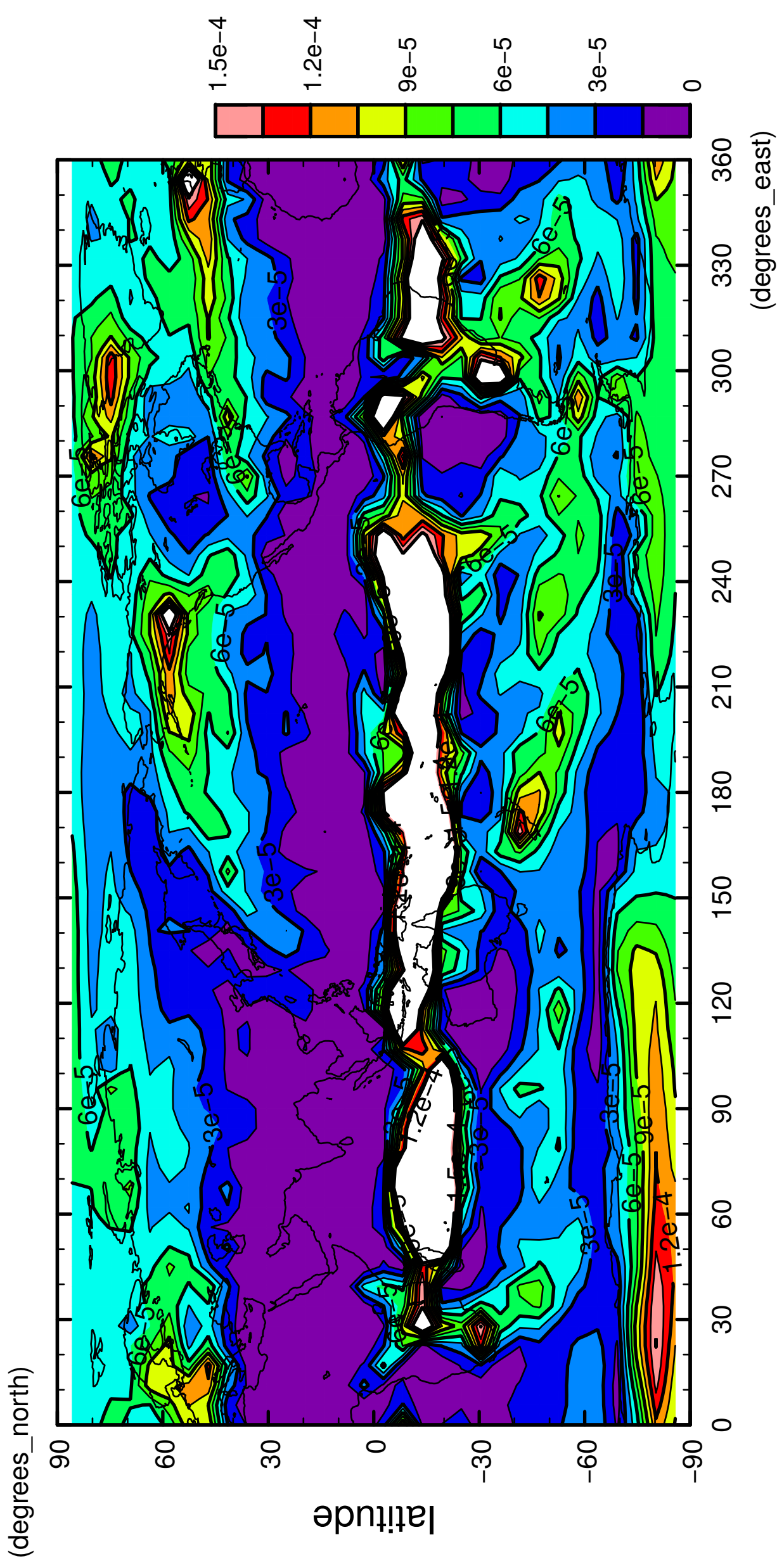


longitude

CONTOUR INTERVAL = 1.500E-05

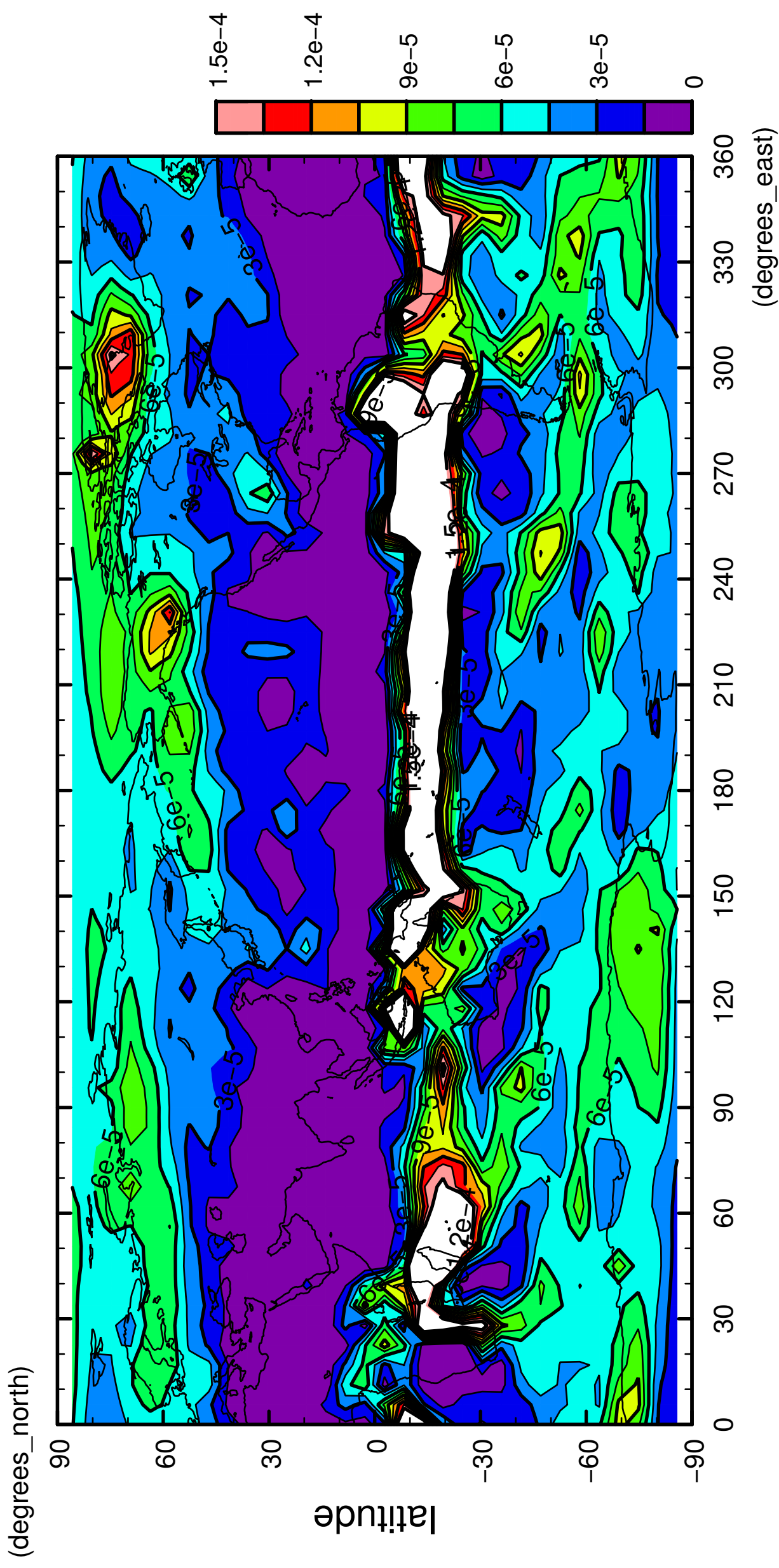
10/12

precipitation (rain + snow)



12/12

precipitation (rain + snow)



longitude

CONTOUR INTERVAL = 1.500E-05