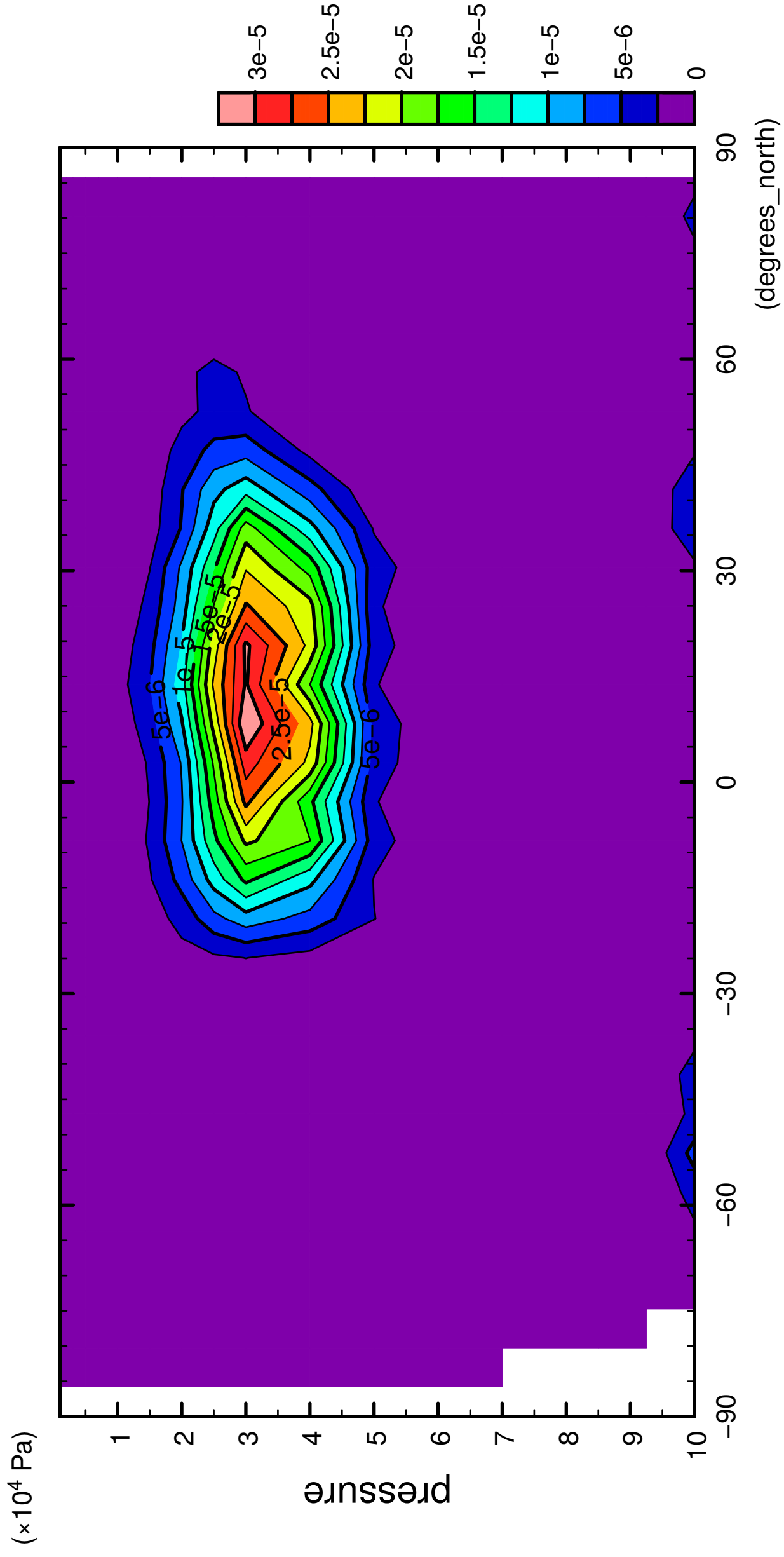


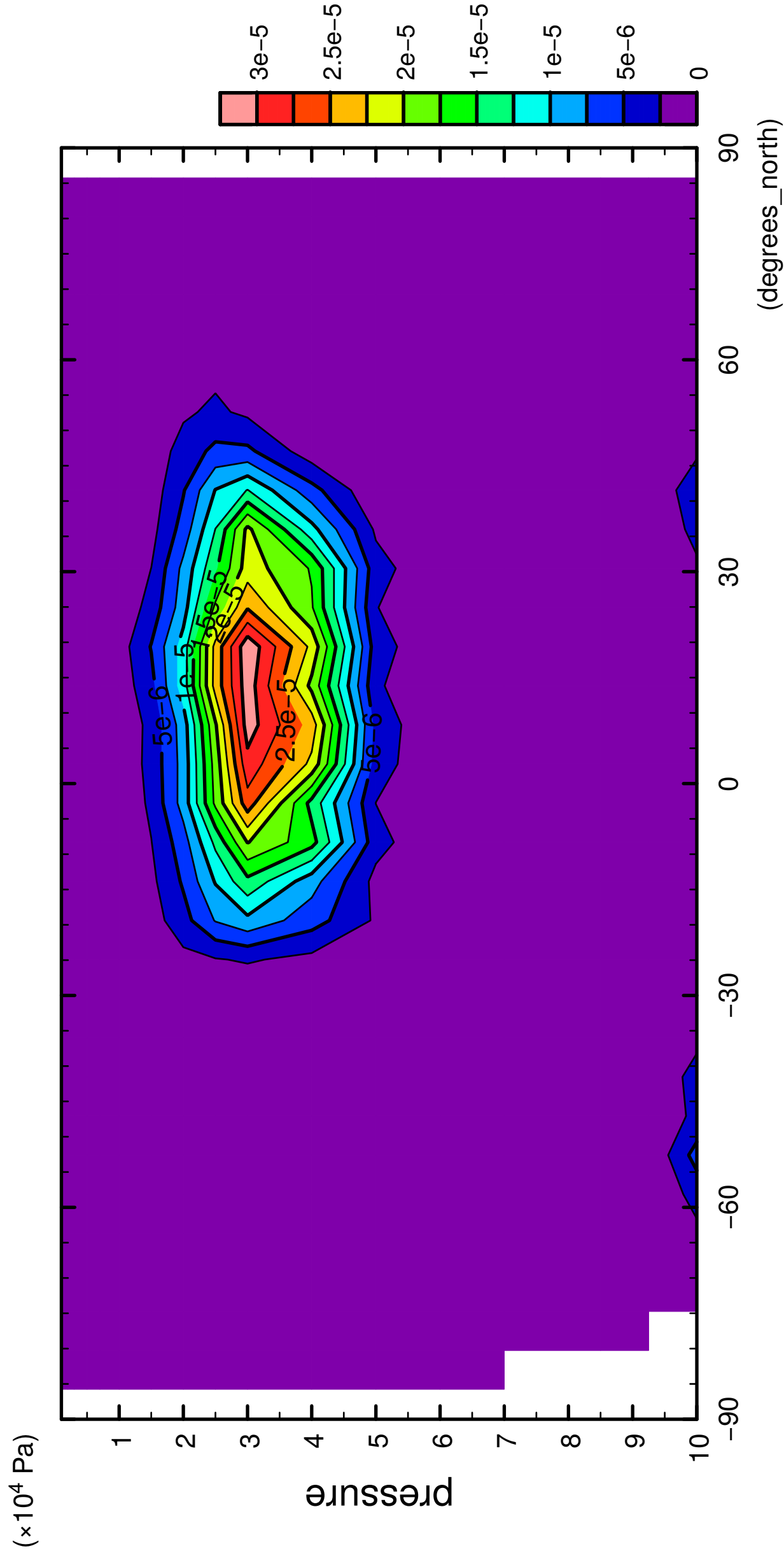
1/12

QH2OSol



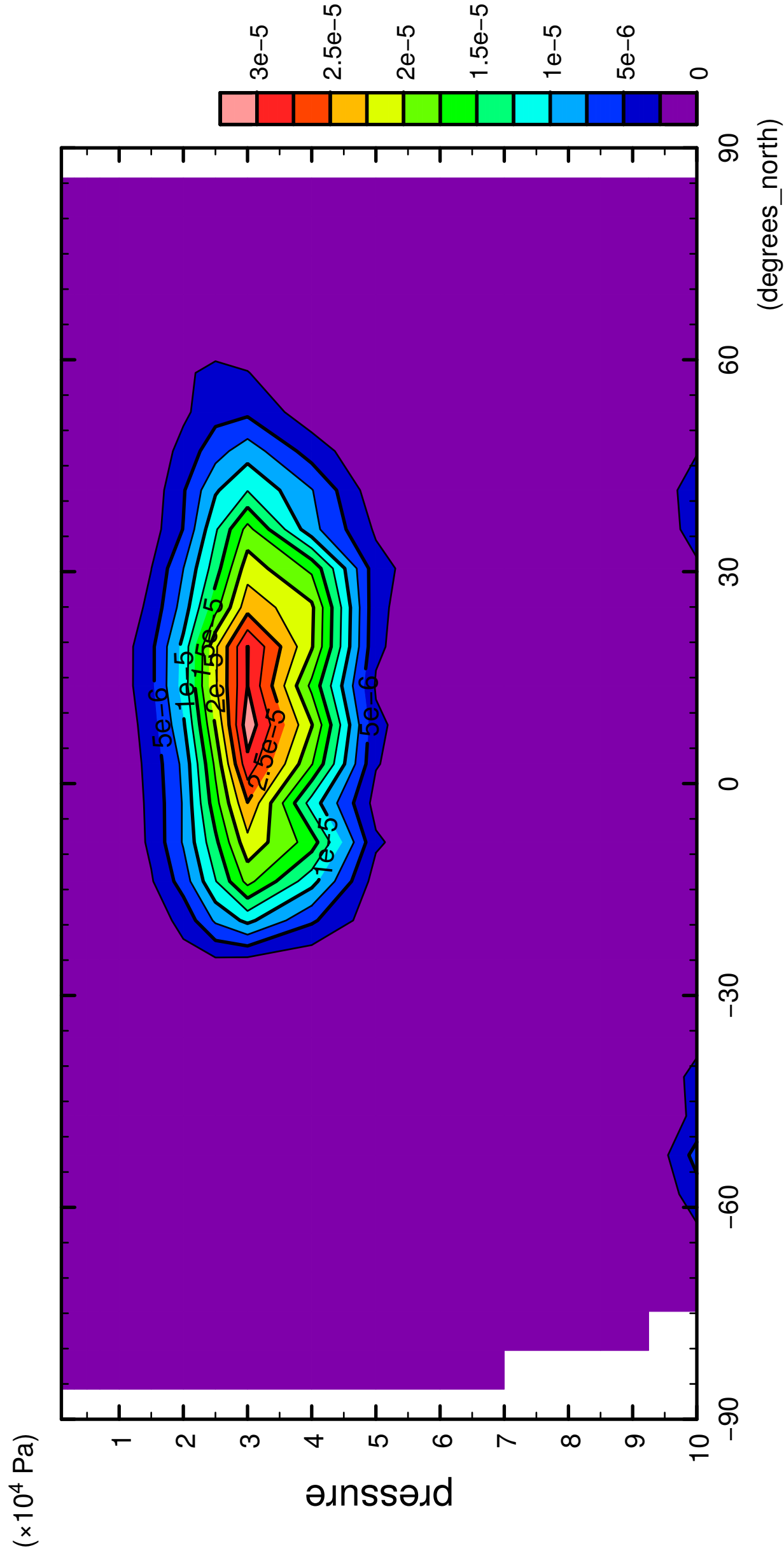
2/12

QH2OSol



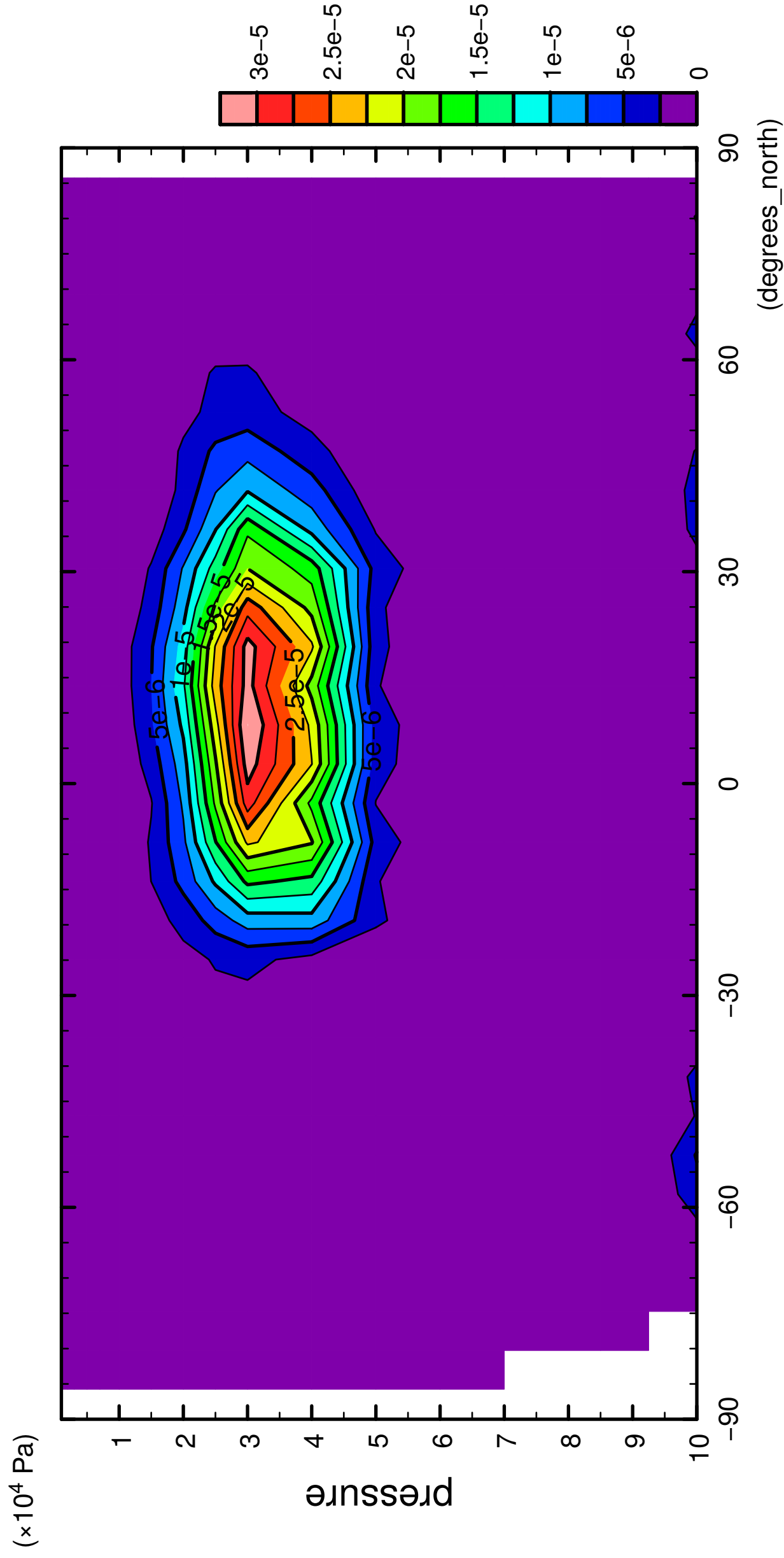
3/12

QH2OSol



4/12

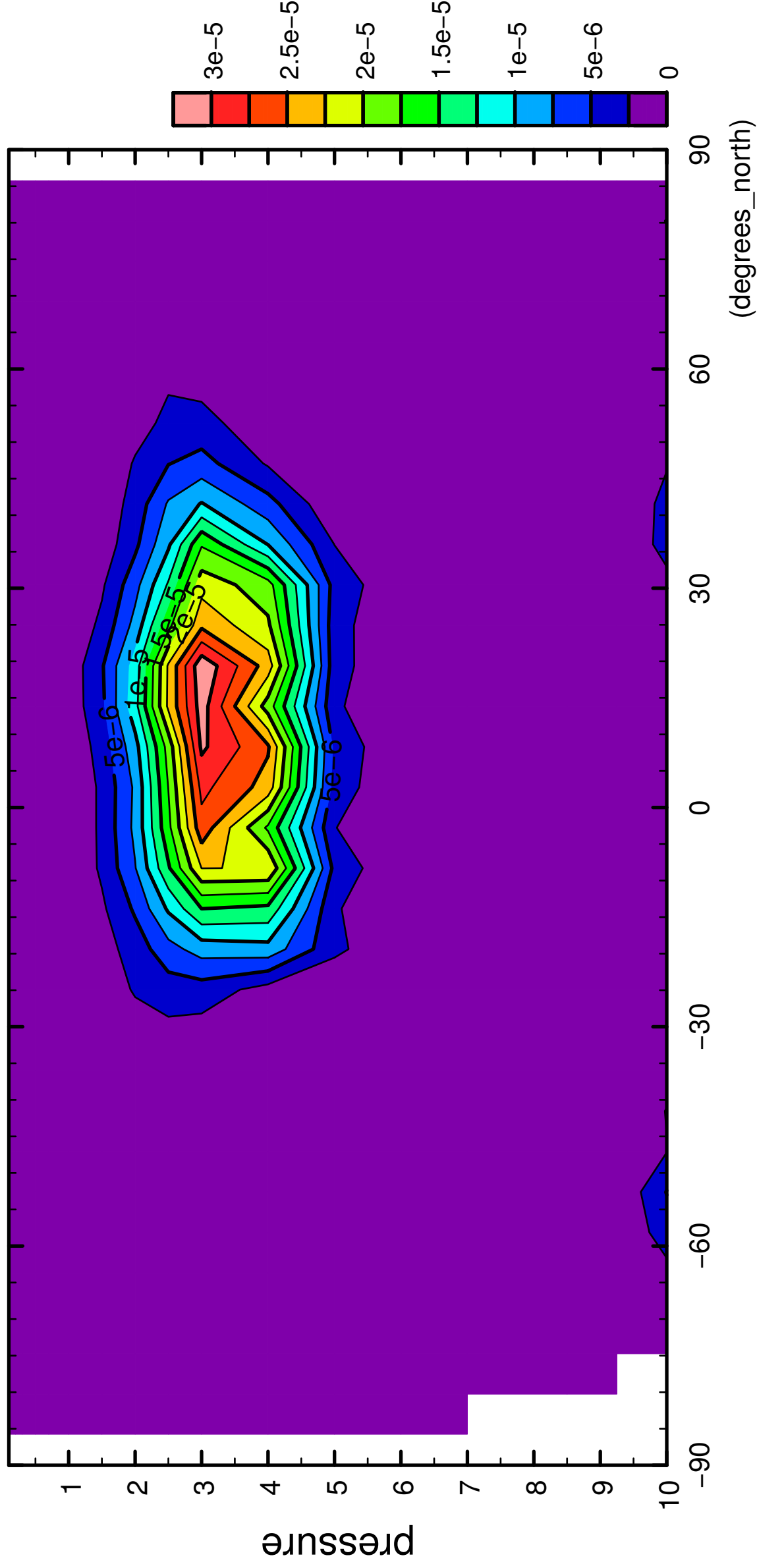
QH2OSol



5/12

QH2OSol

($\times 10^4$ Pa)



latitude

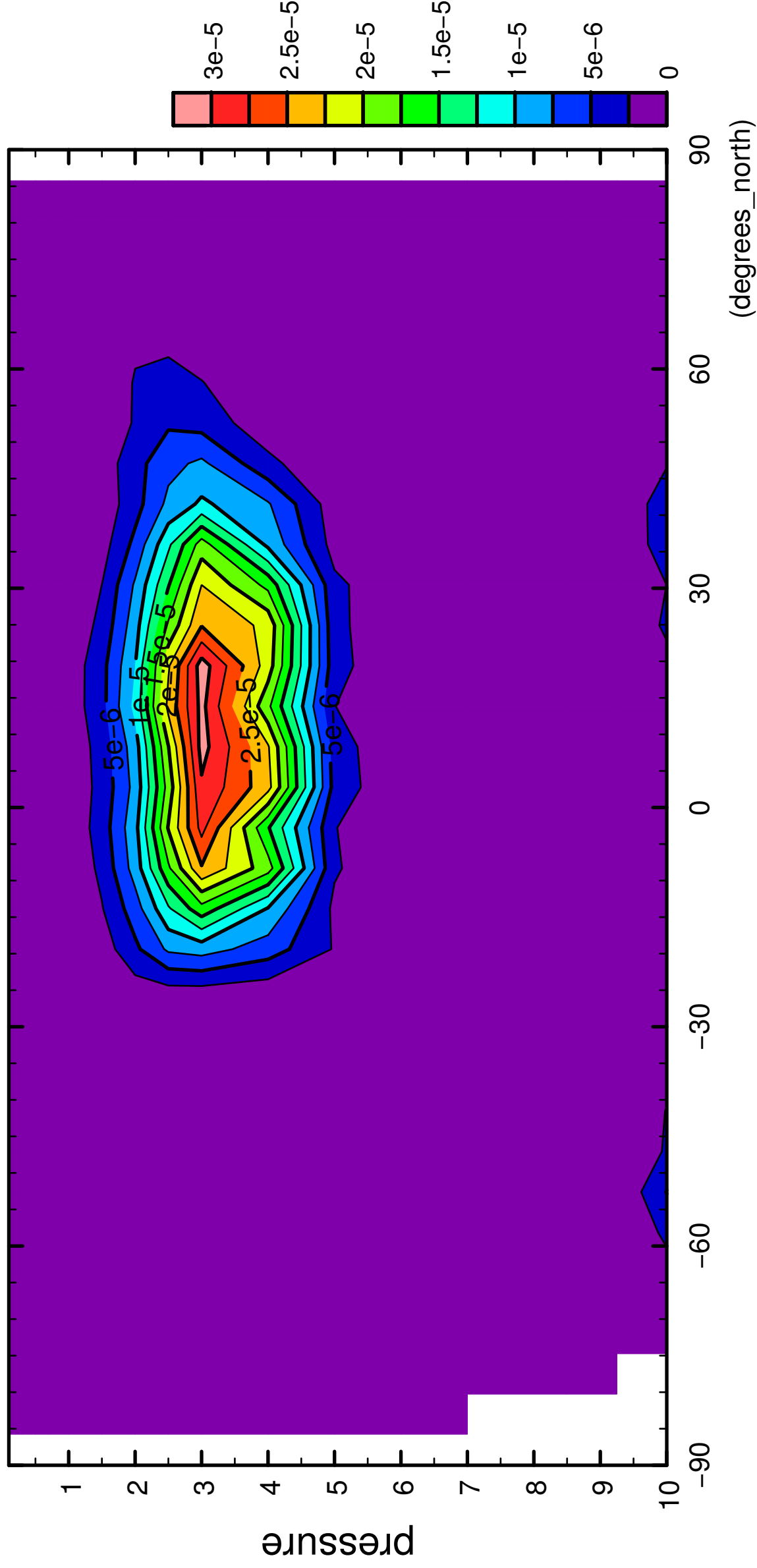
(degrees_north)

CONTOUR INTERVAL = 2.500×10^{-6}

6/12

QH2OSol

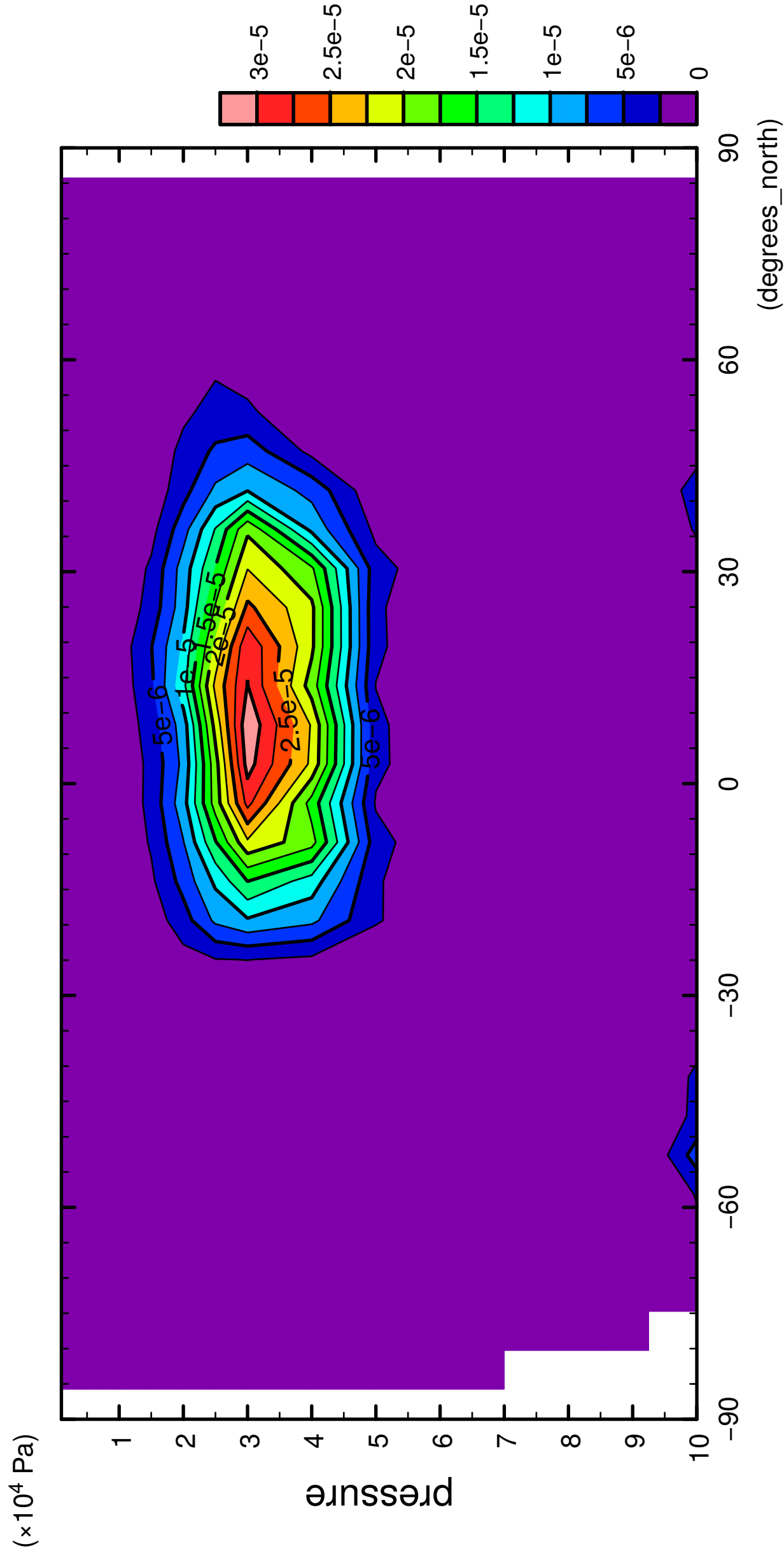
($\times 10^4$ Pa)



CONTOUR INTERVAL = 2.500E-06

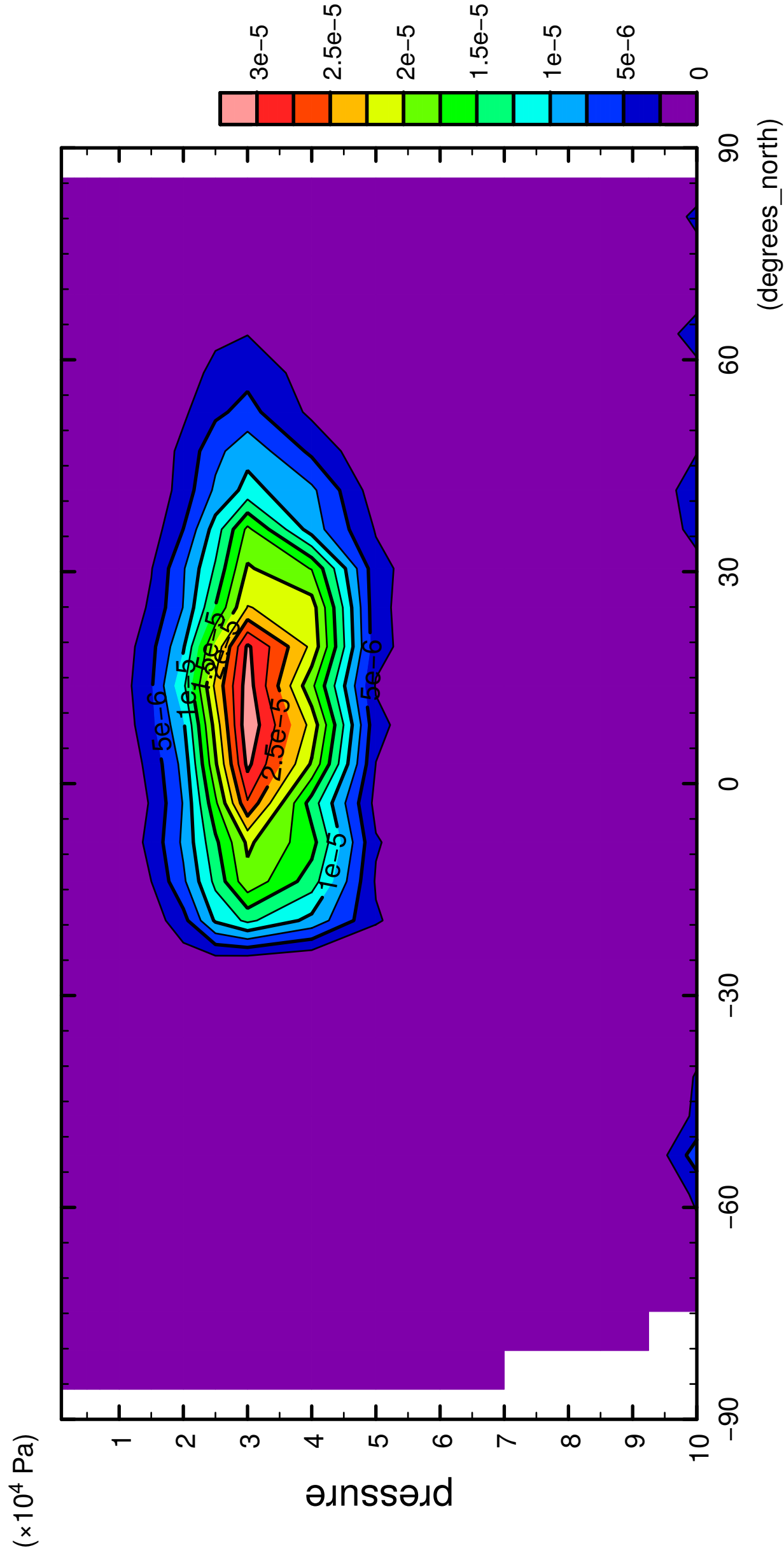
7/12

QH2OSol



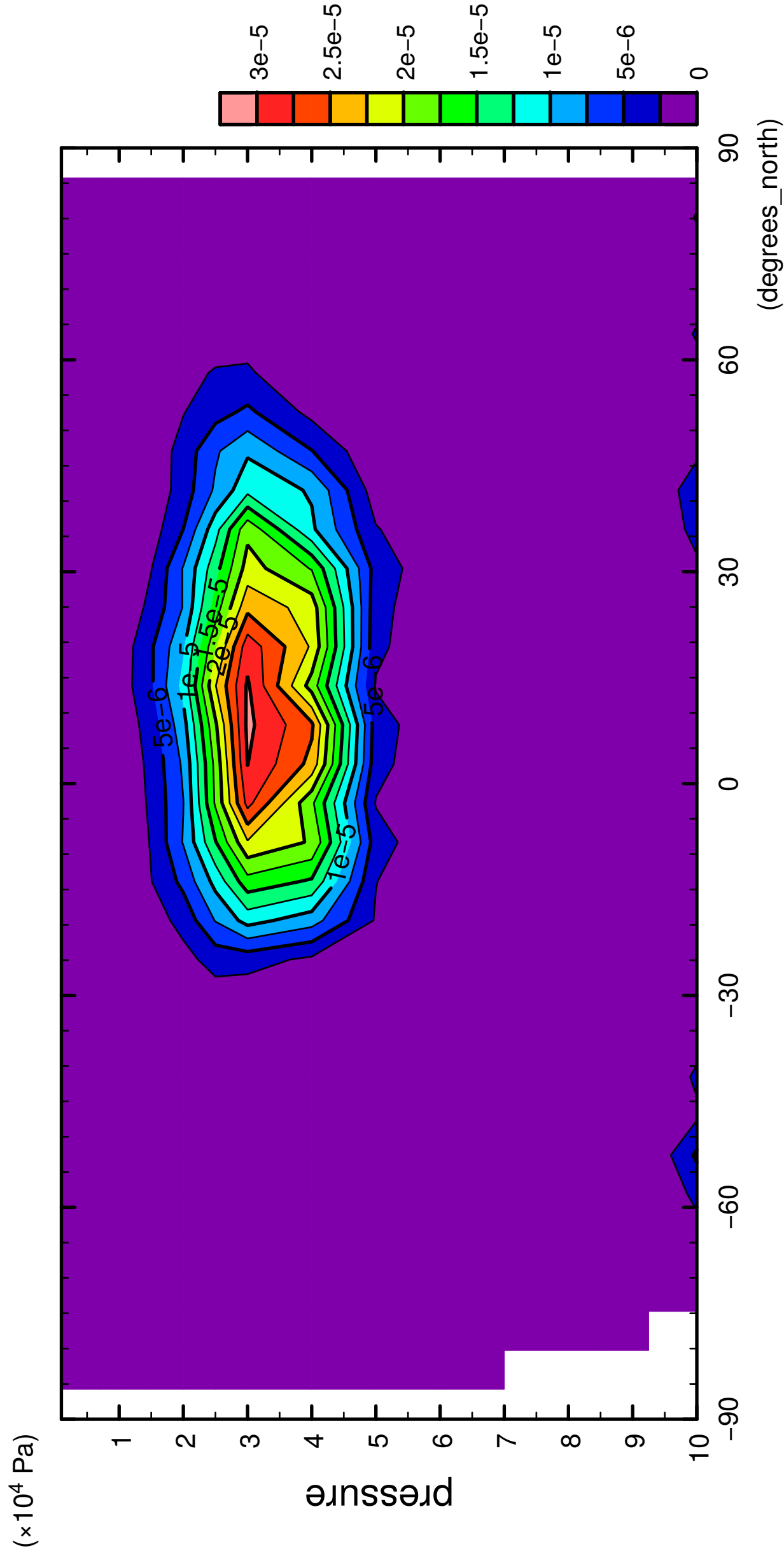
8/12

QH2OSol



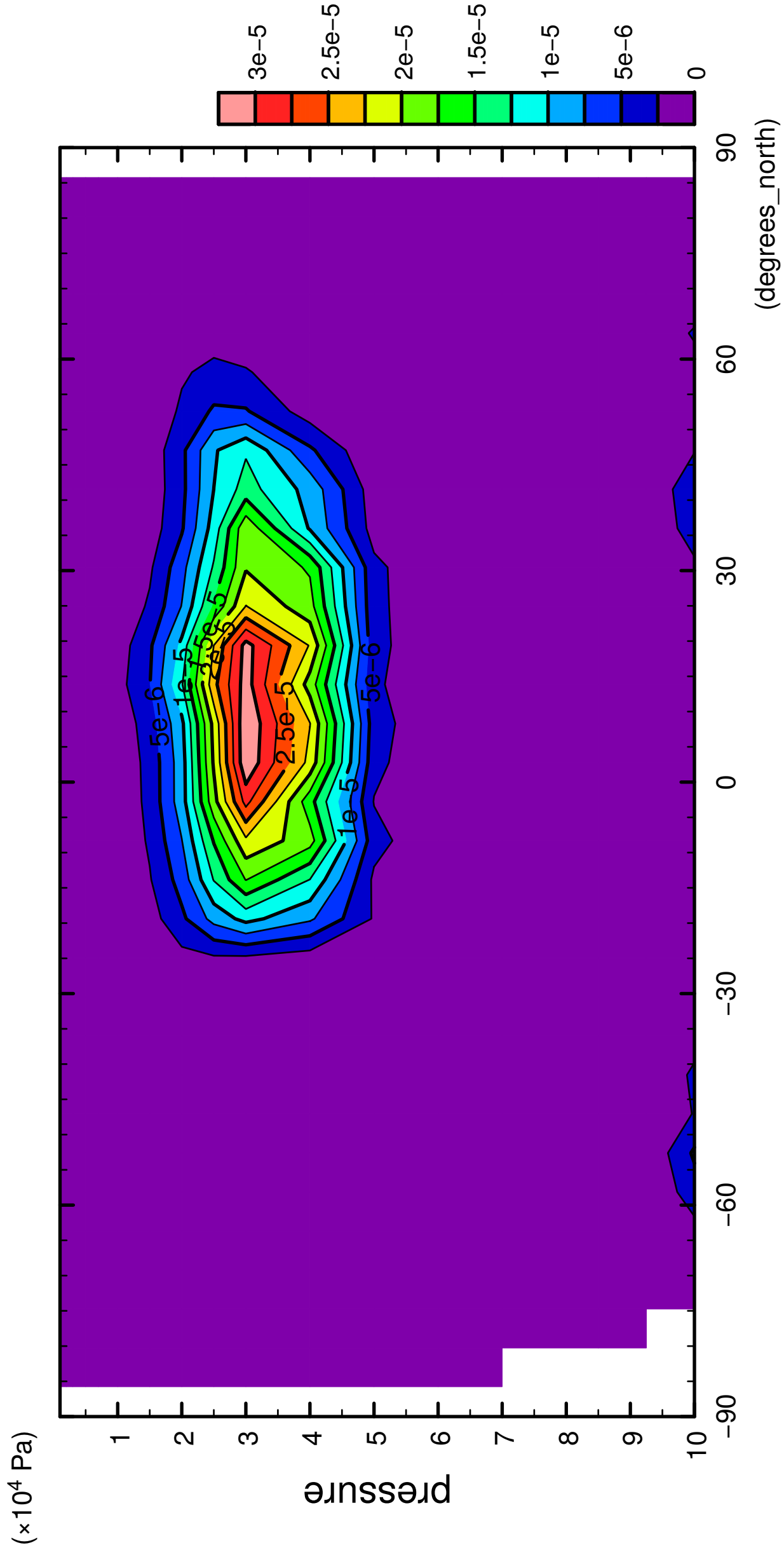
9/12

QH2OSol



10/12

QH2OSol

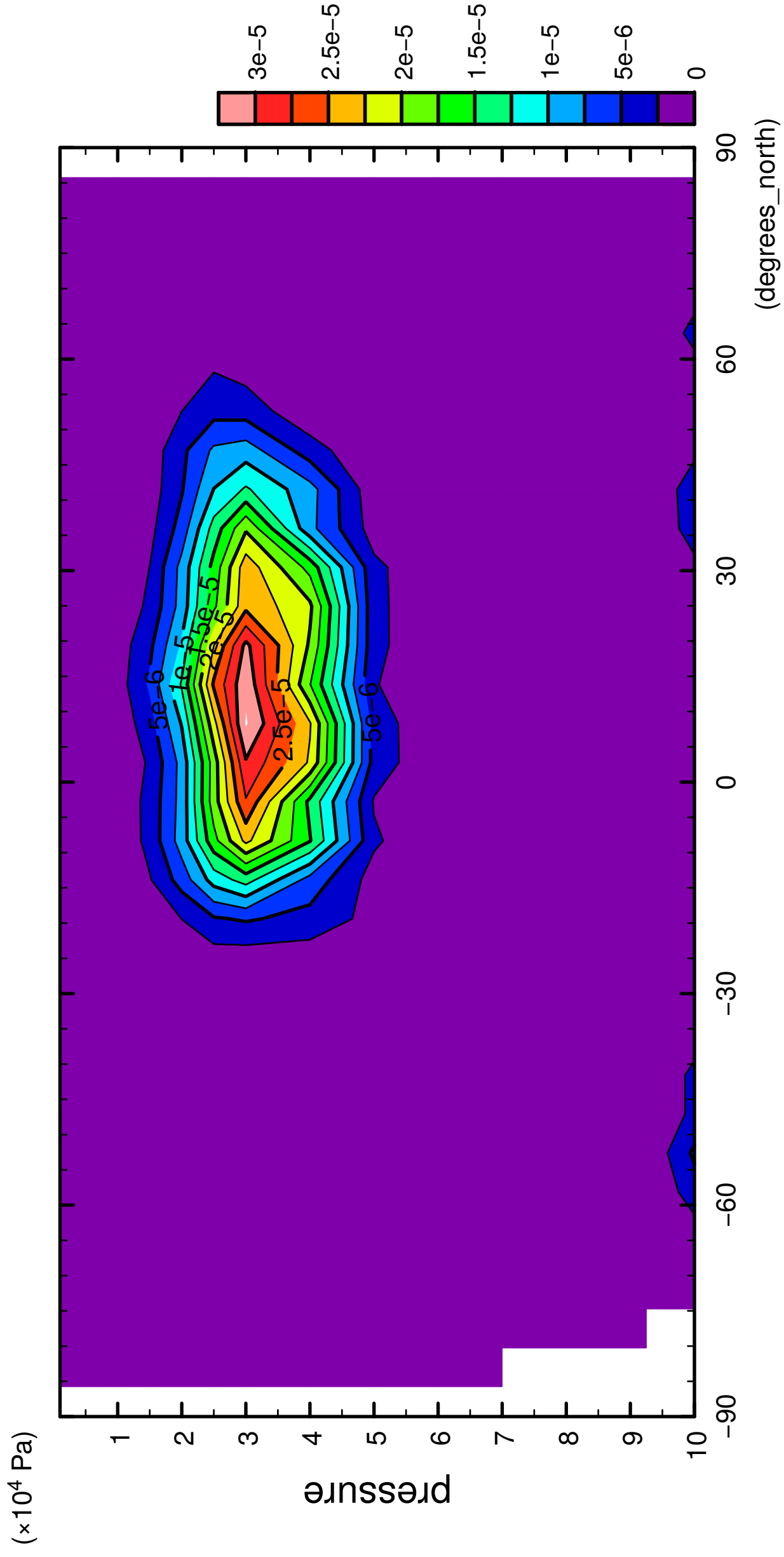


latitude

CONTOUR INTERVAL = 2.500×10^{-6}

11/12

QH2OSol



12/12

QH2OSol

