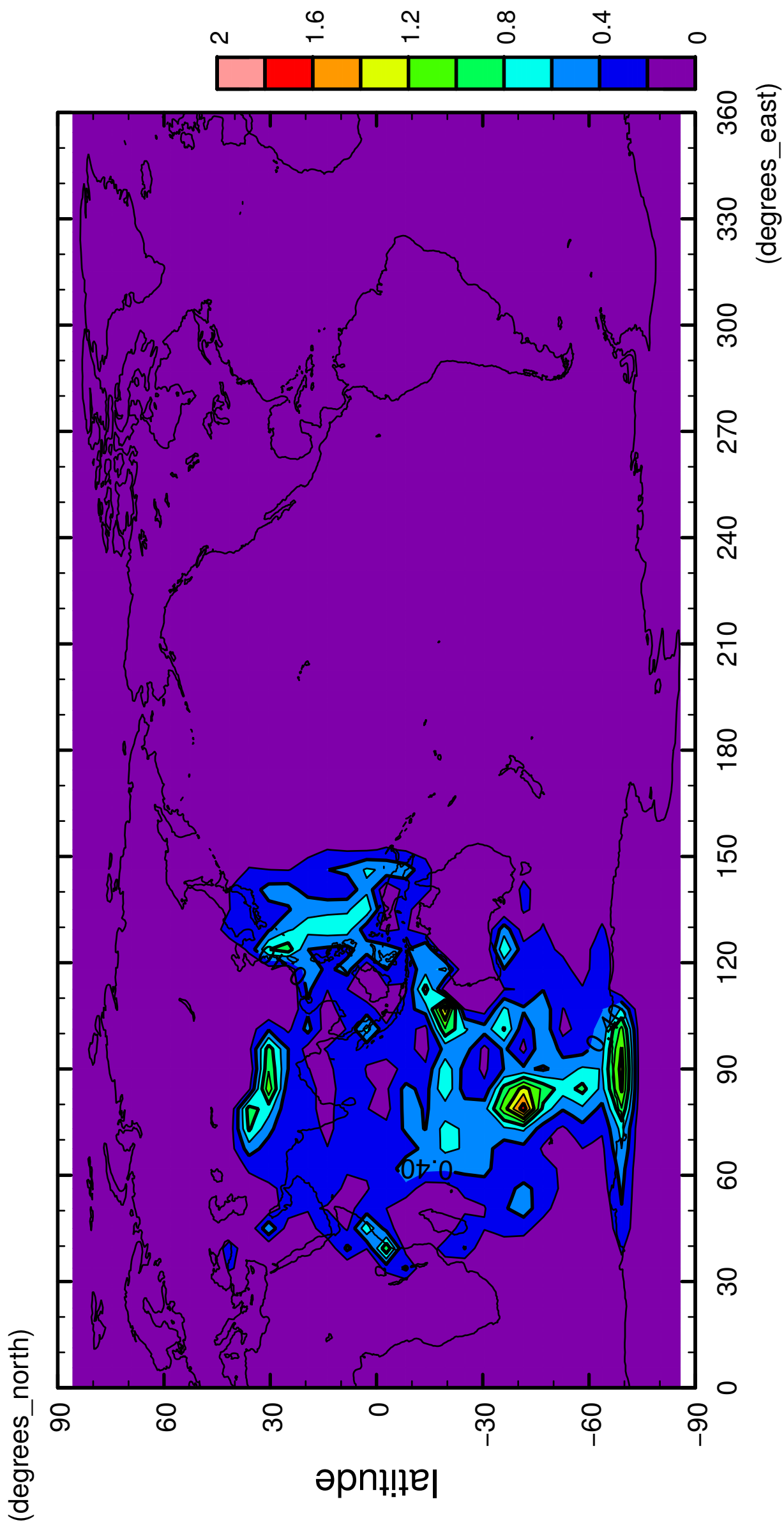


1/12

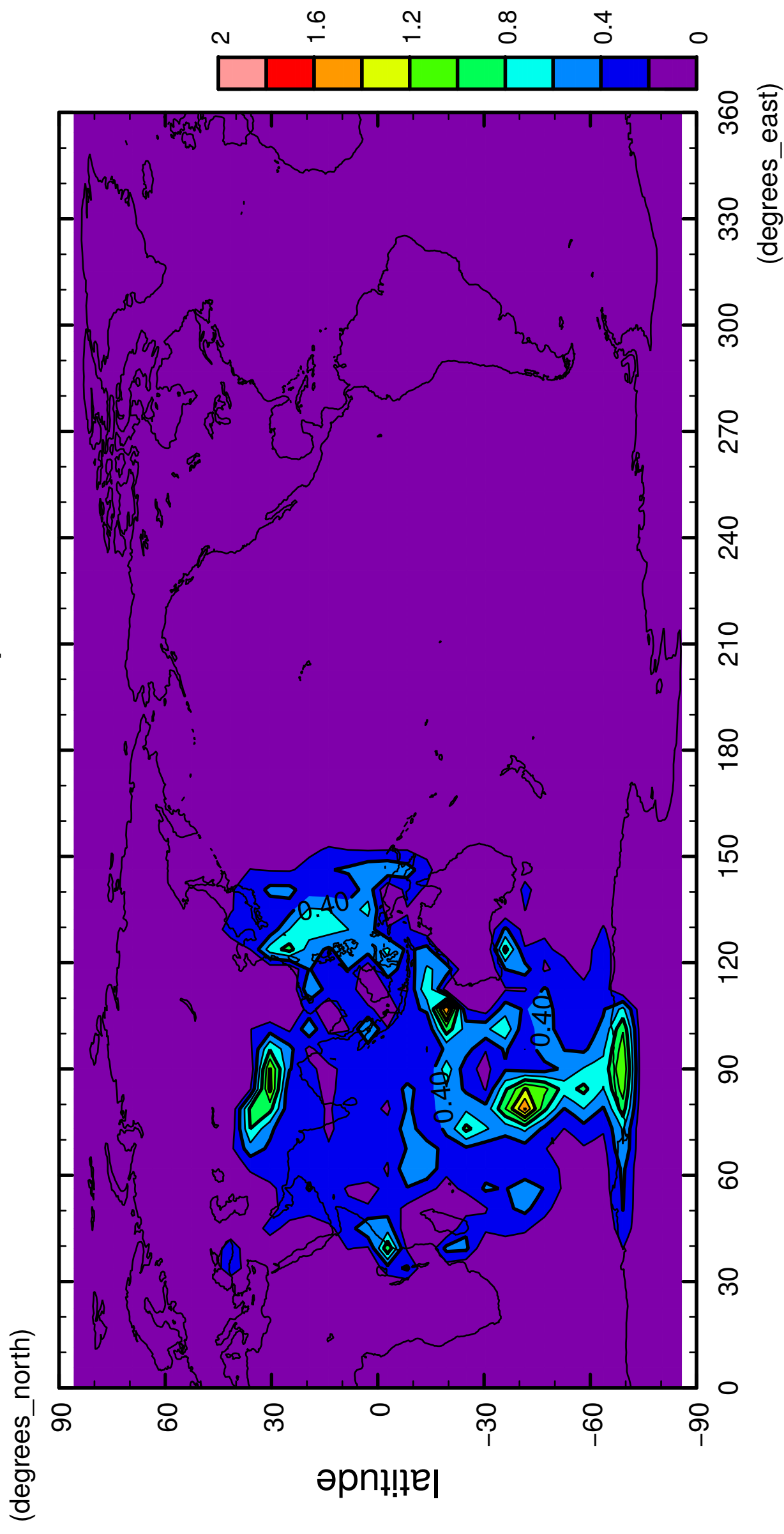
QH2OLiq



longitude
CONTOUR INTERVAL = 2.000E-01

2/12

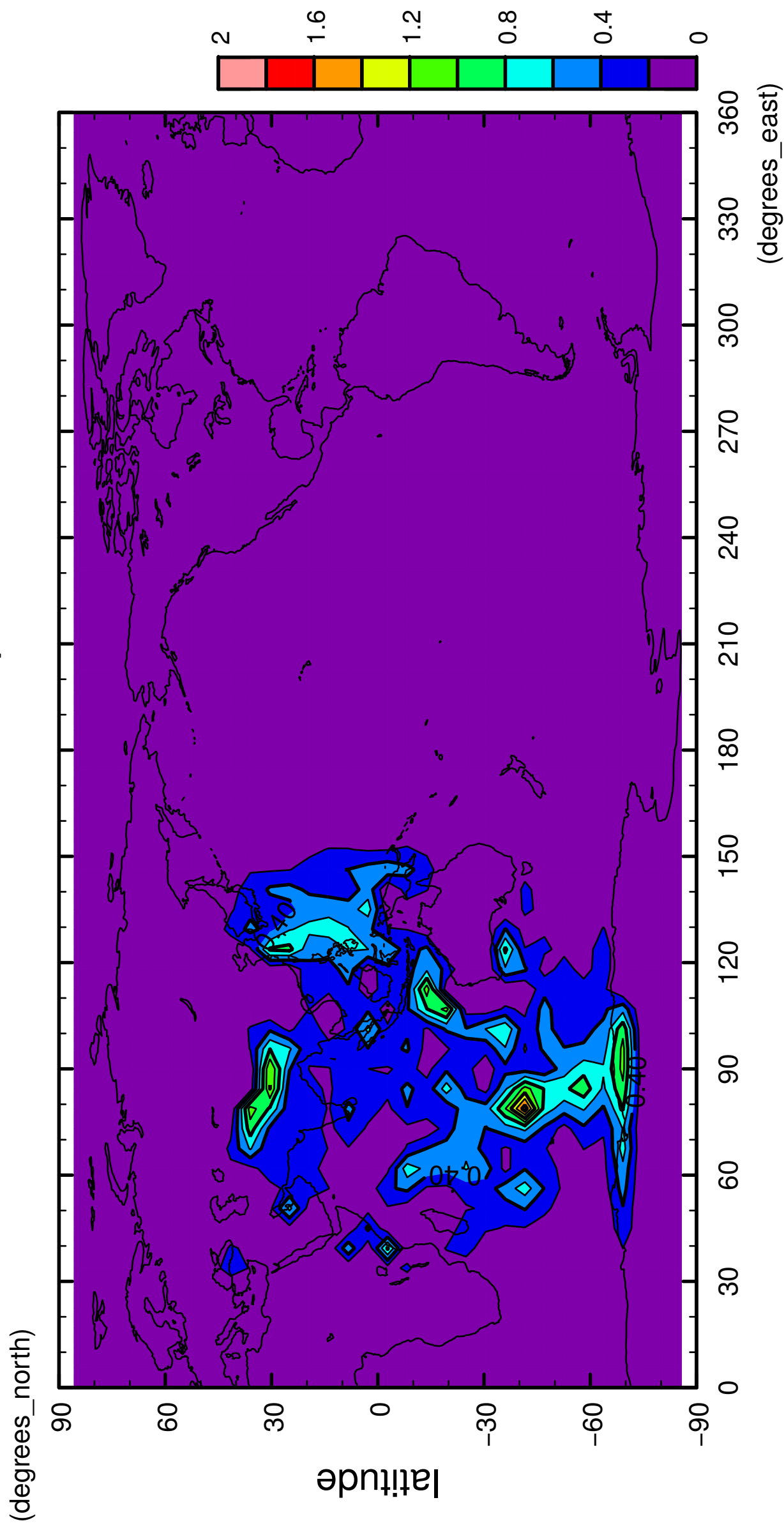
QH2OLiq



longitude
CONTOUR INTERVAL = 2.000E-01

3/12

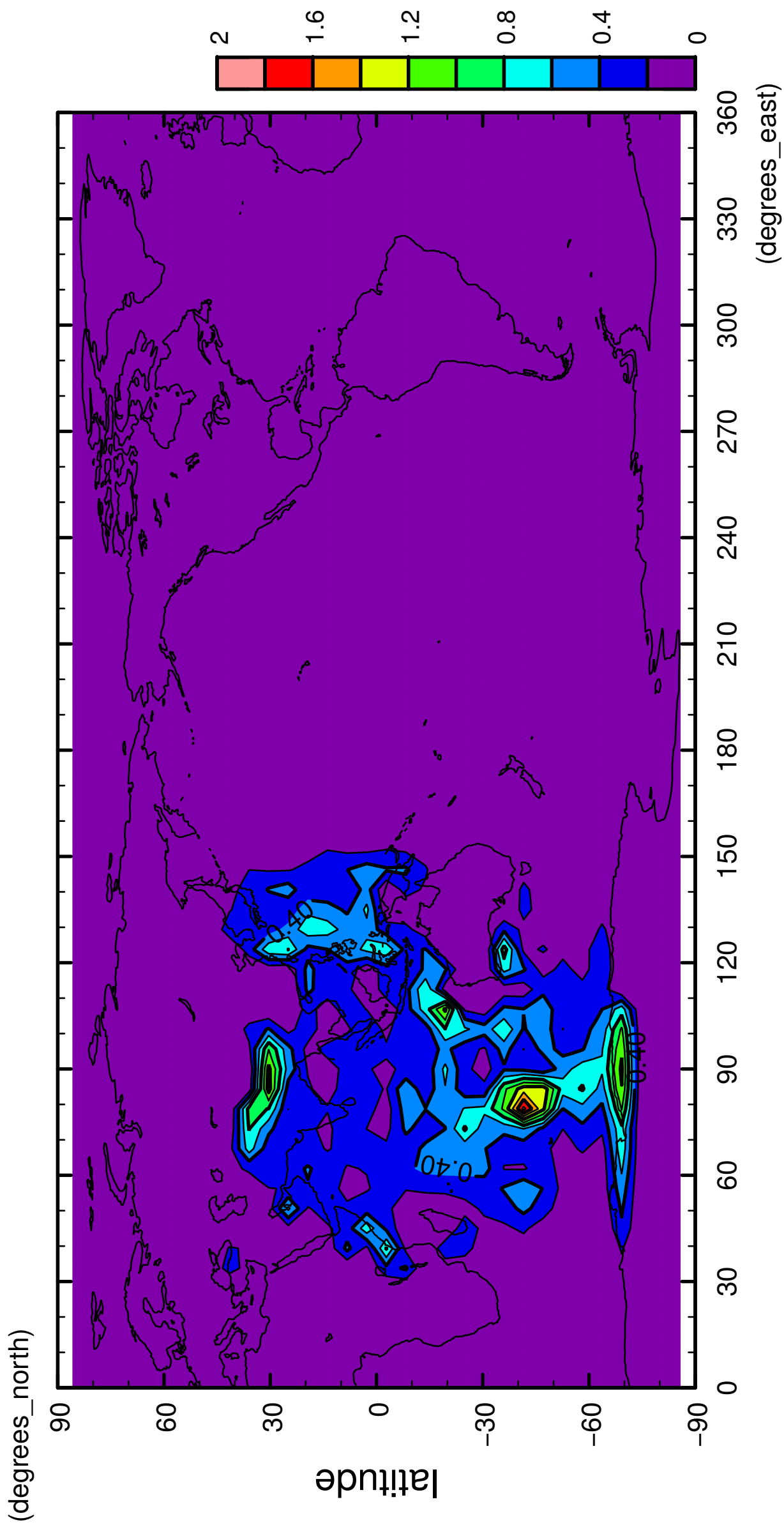
QH2OLiq



longitude
CONTOUR INTERVAL = 2.000E-01

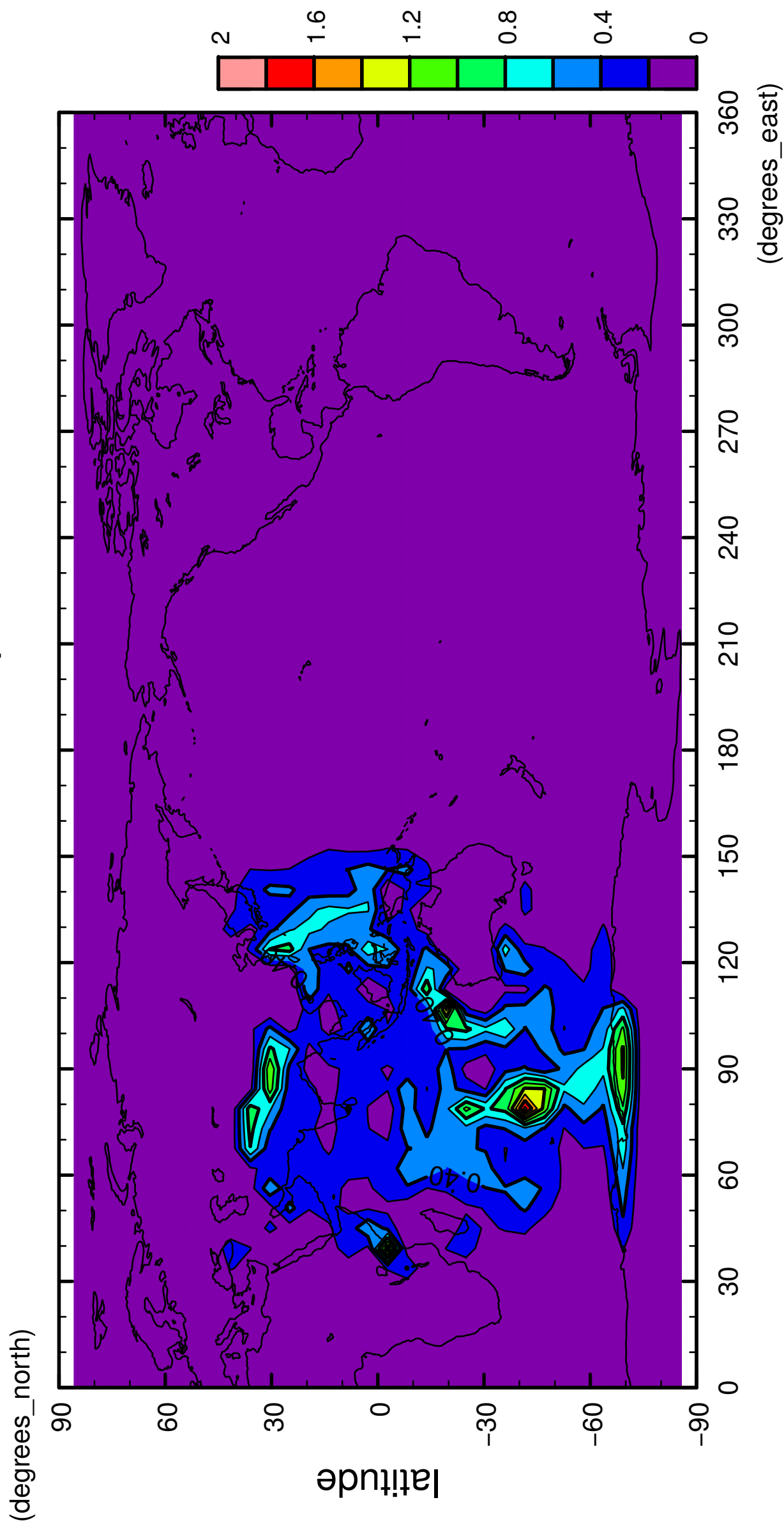
4/12

QH2OLiq



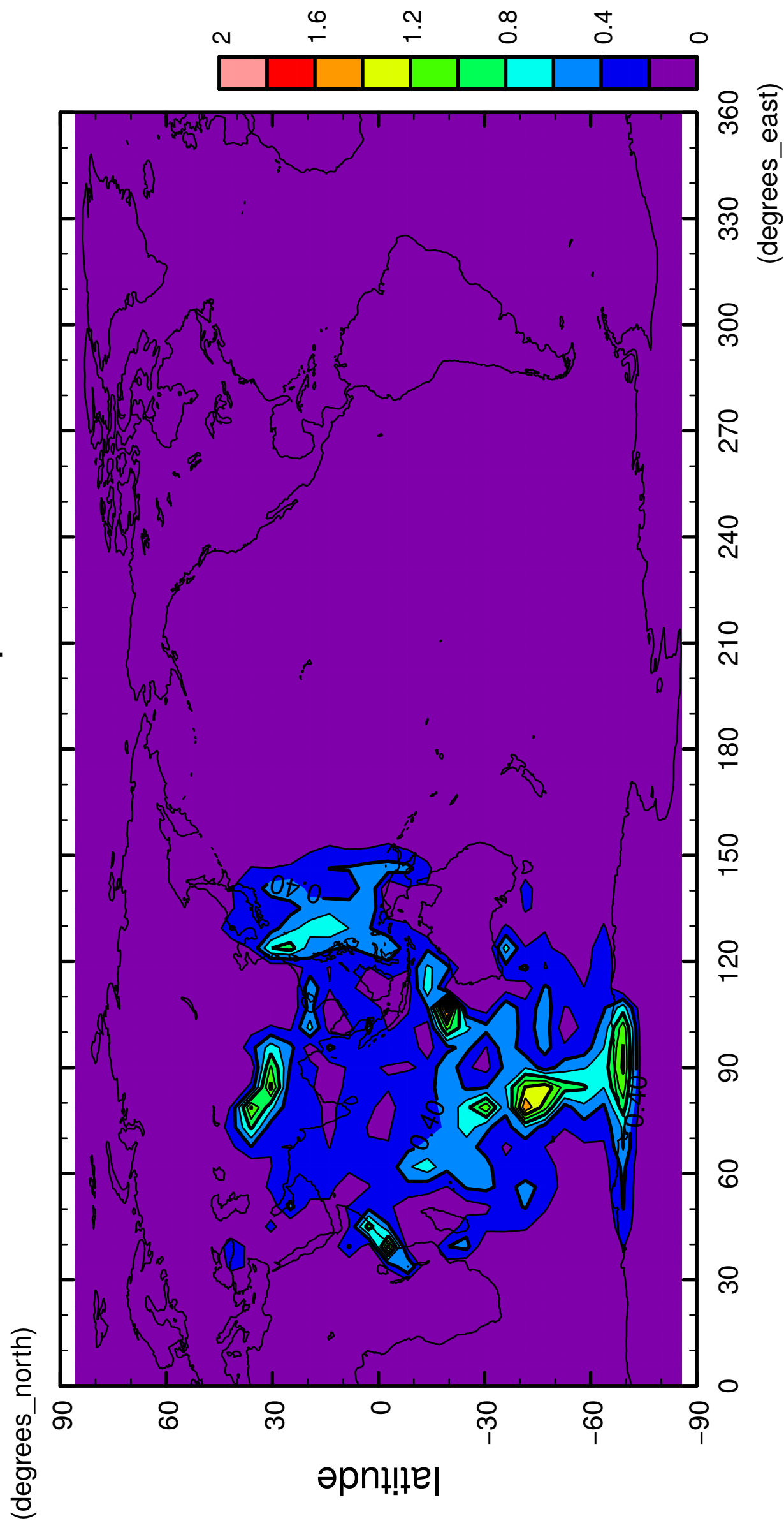
5/12

QH2OLiq



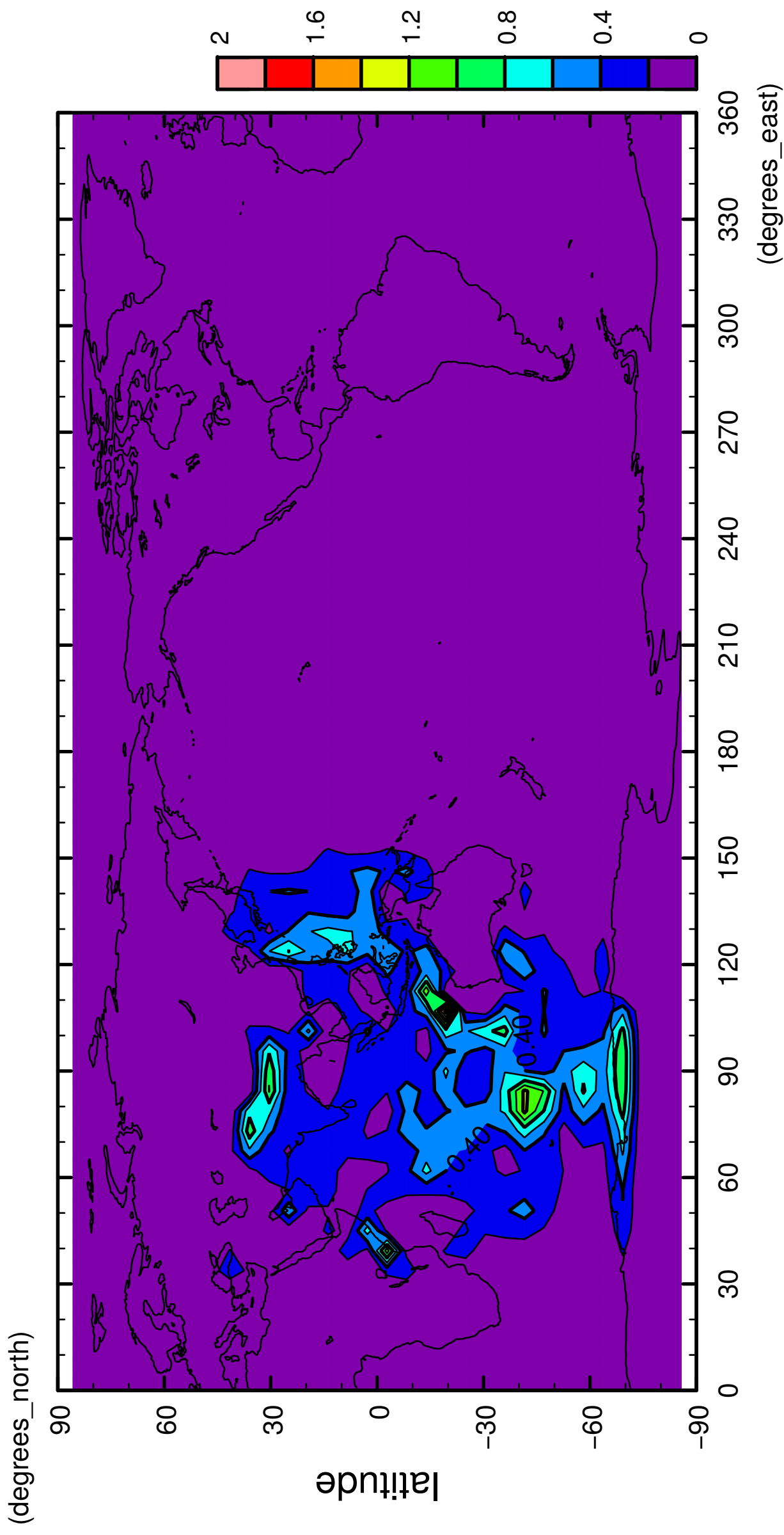
6/12

QH2OLiq



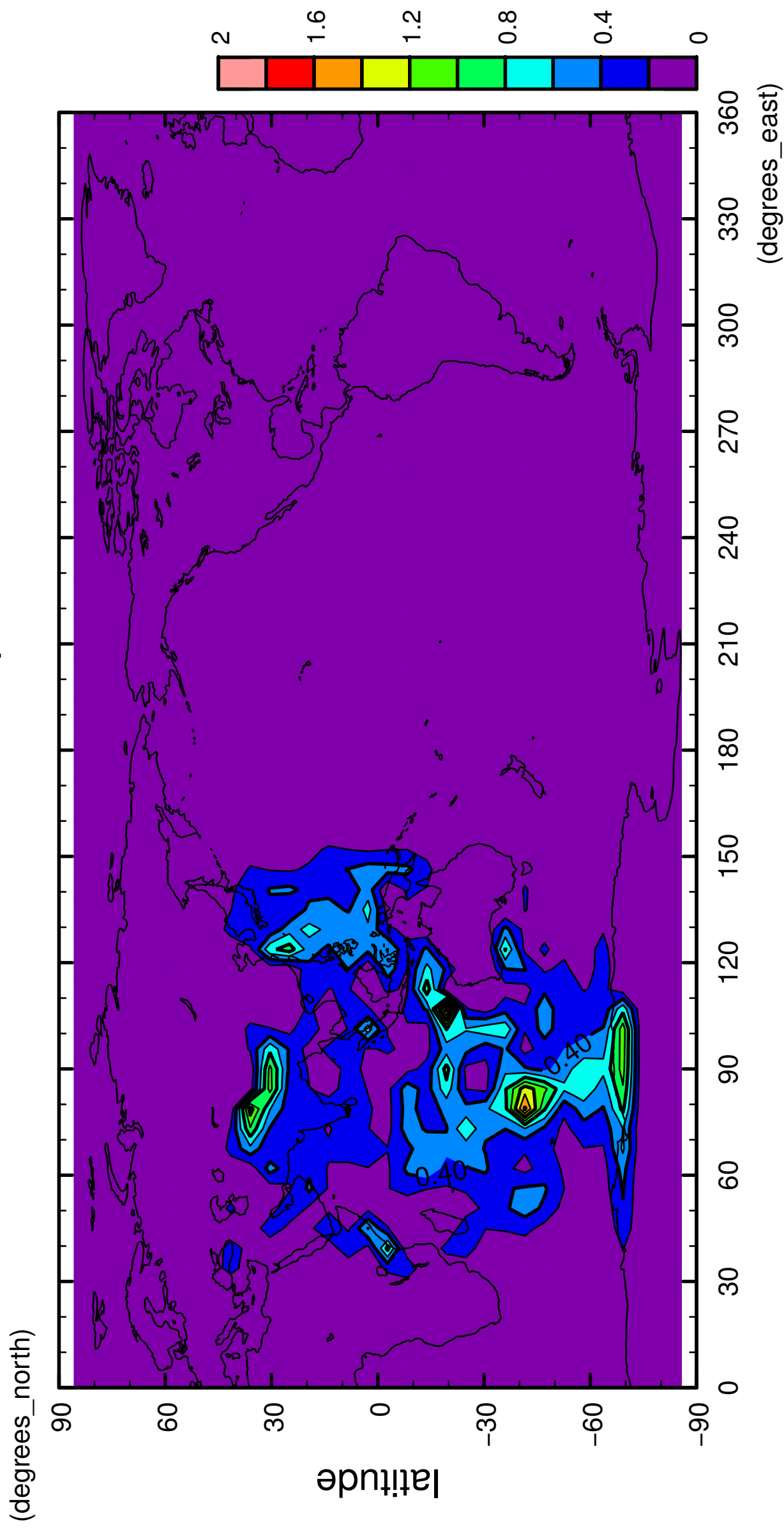
7/12

QH2OLiq



8/12

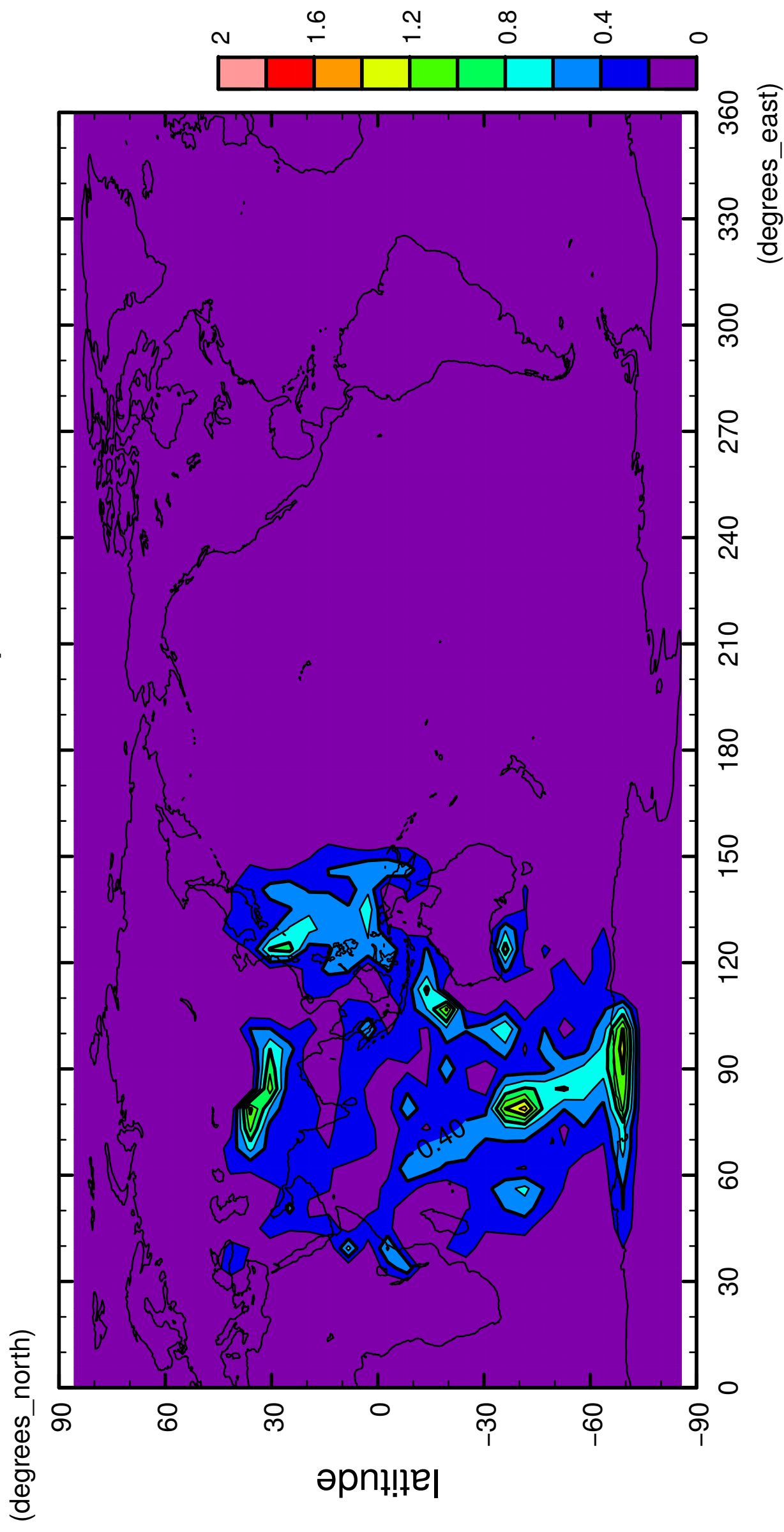
QH2OLiq



longitude
CONTOUR INTERVAL = 2.000E-01

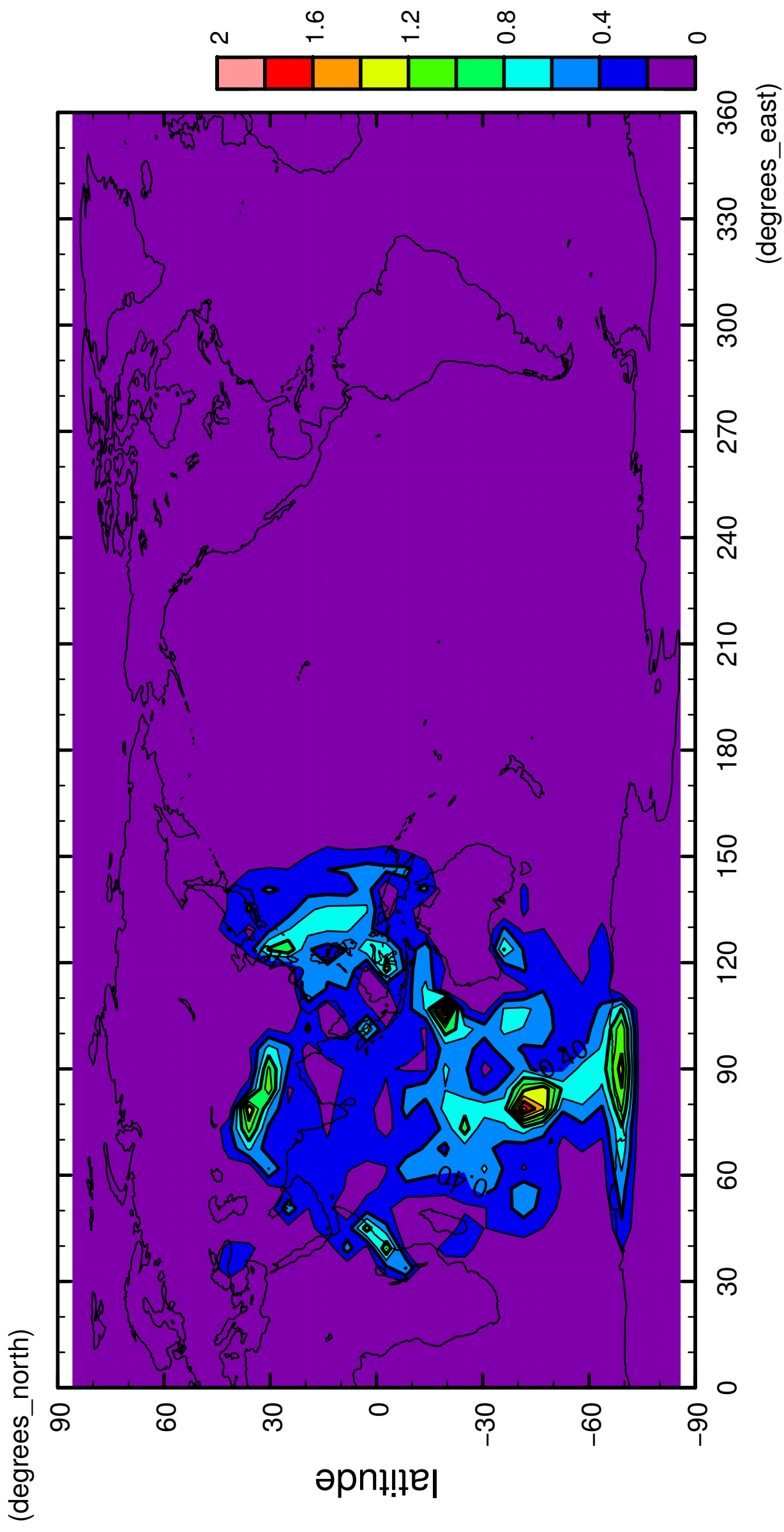
9/12

QH2OLiq



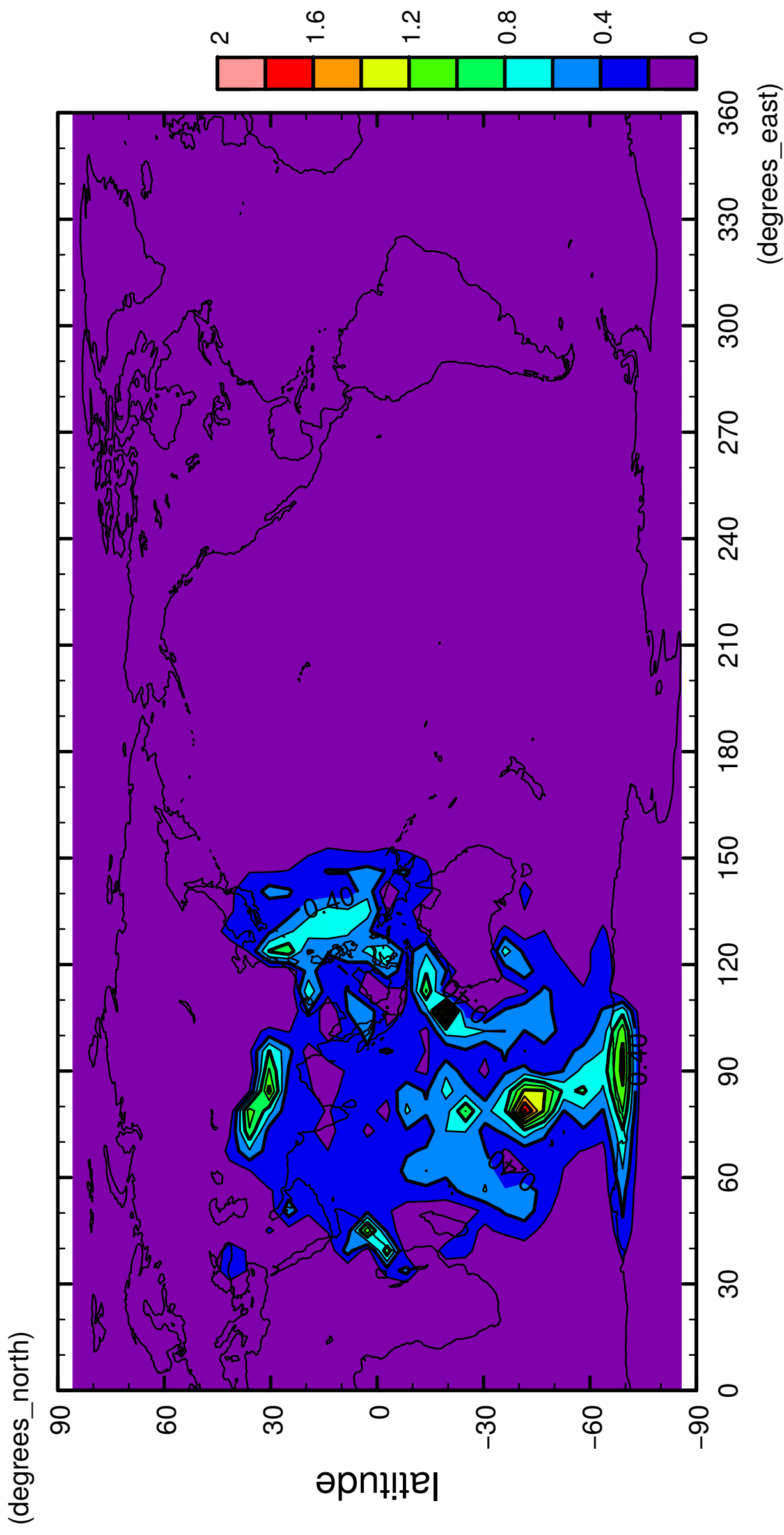
10/12

QH2OLiq



11/12

QH2OLiq



12/12

QH2OLiq

