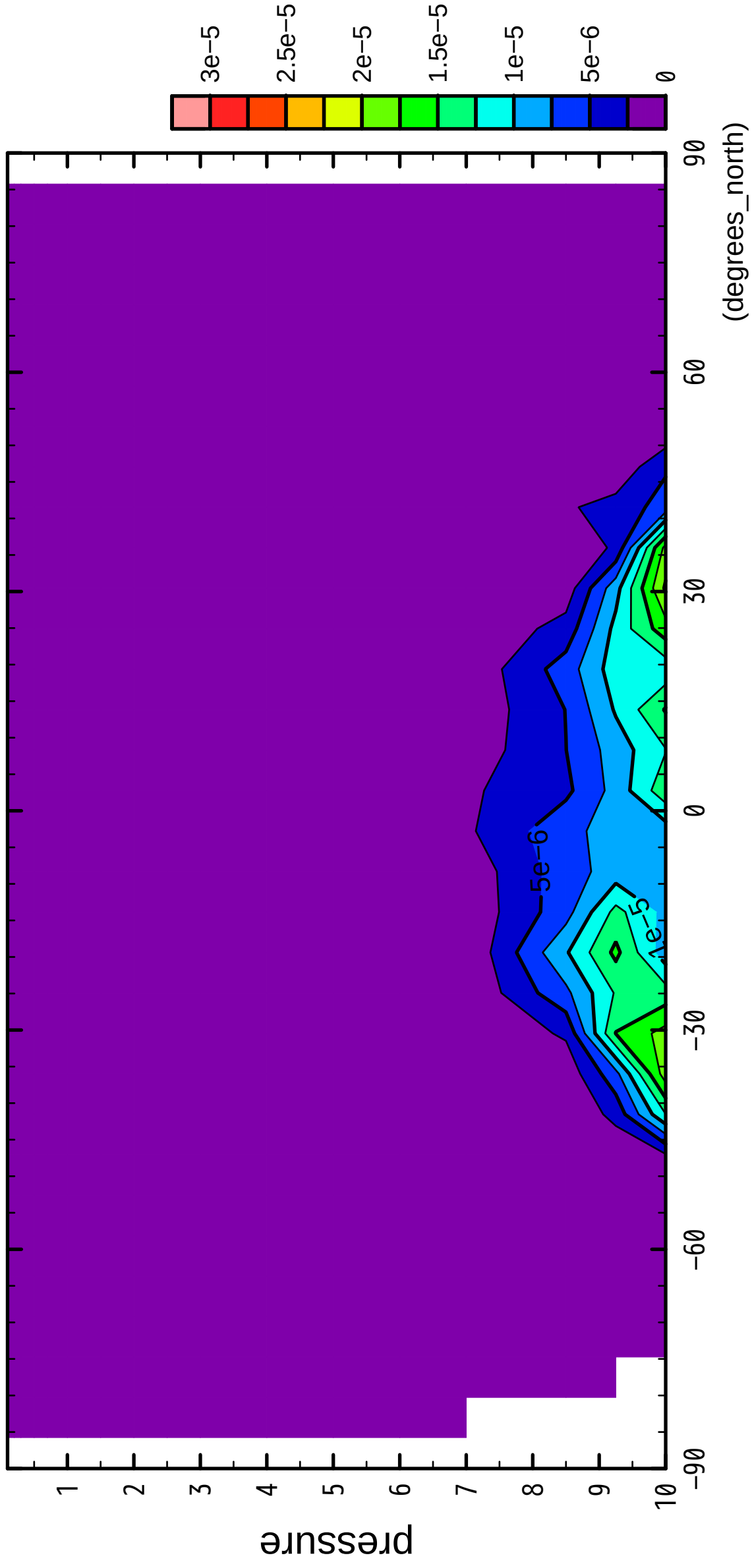


1/12

QH2OLiq

($\times 10^4$ Pa)



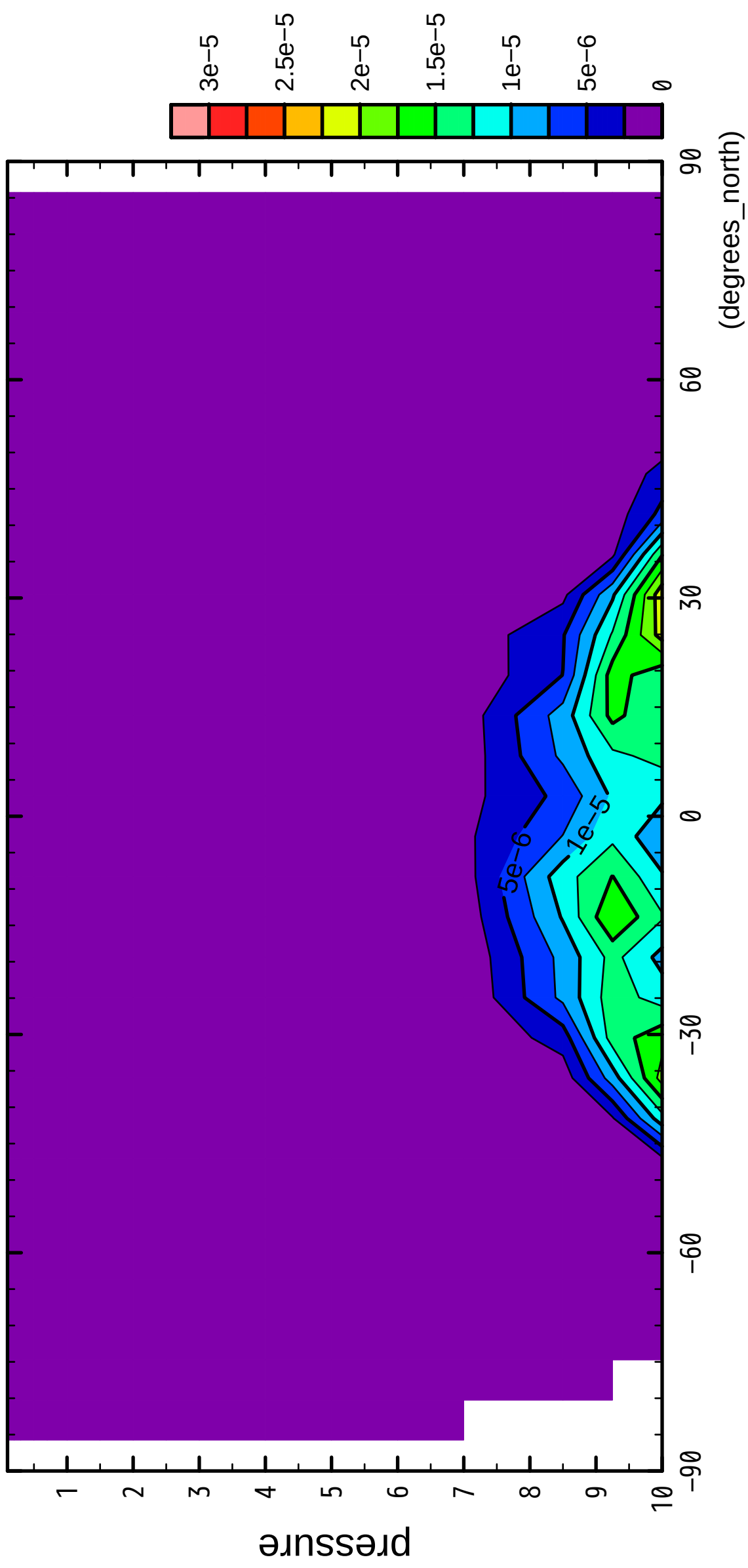
latitude

CONTOUR INTERVAL = 2.500×10^{-6}

2/12

QH2OLiq

($\times 10^4$ Pa)



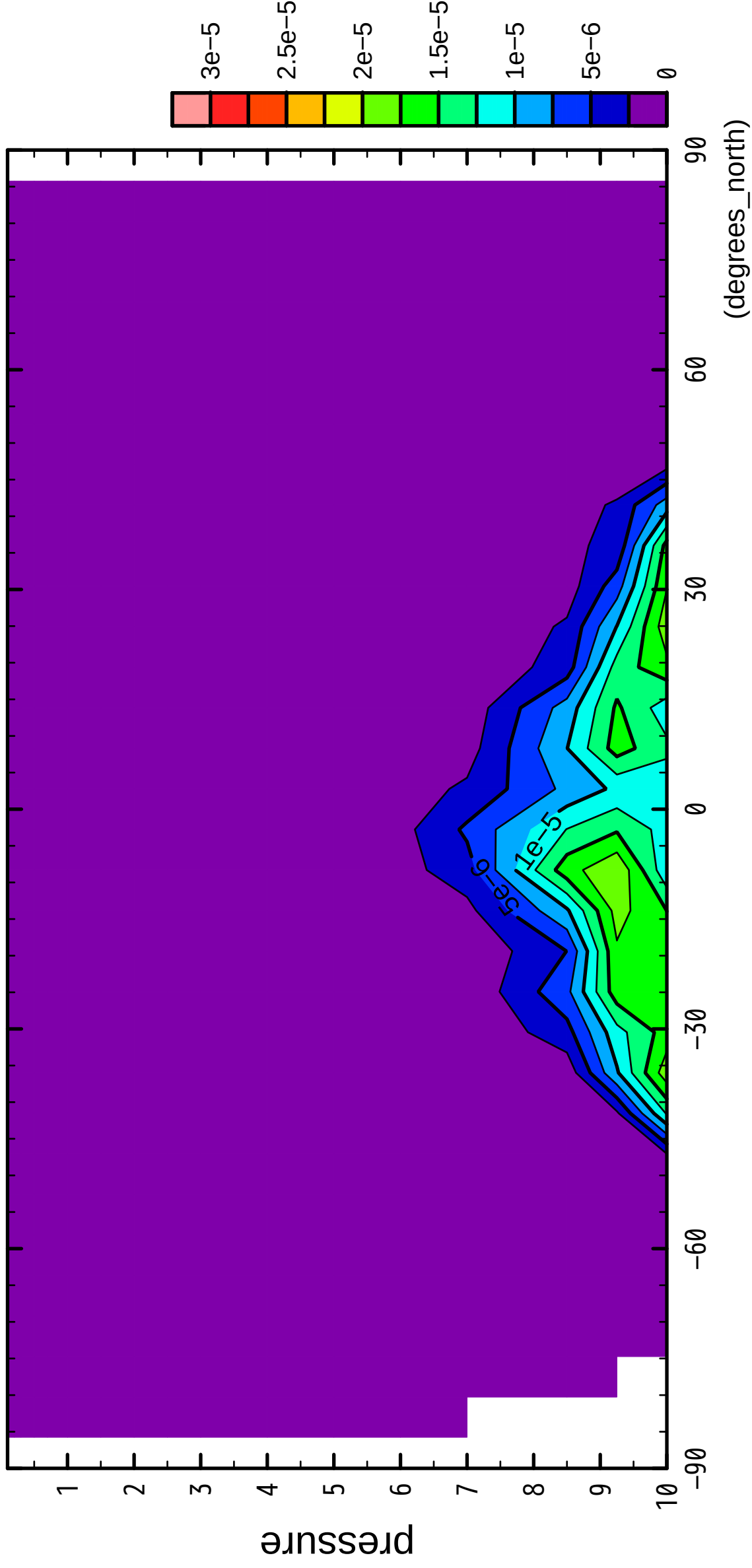
latitude

CONTOUR INTERVAL = $2.500E-06$

3/12

QH2OLiq

($\times 10^4$ Pa)

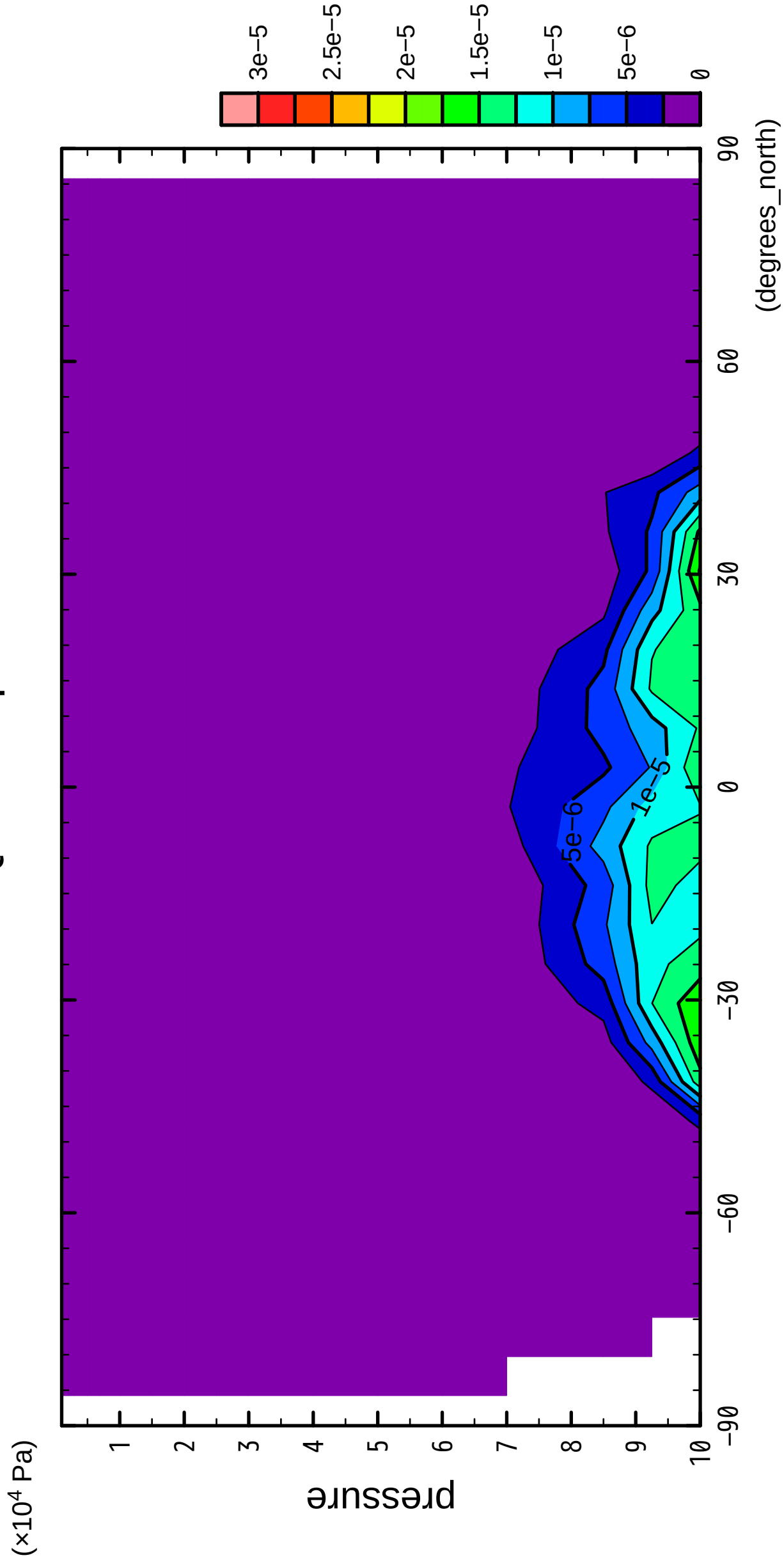


latitude

CONTOUR INTERVAL = 2.500×10^{-6}

4/12

QH2OLiq

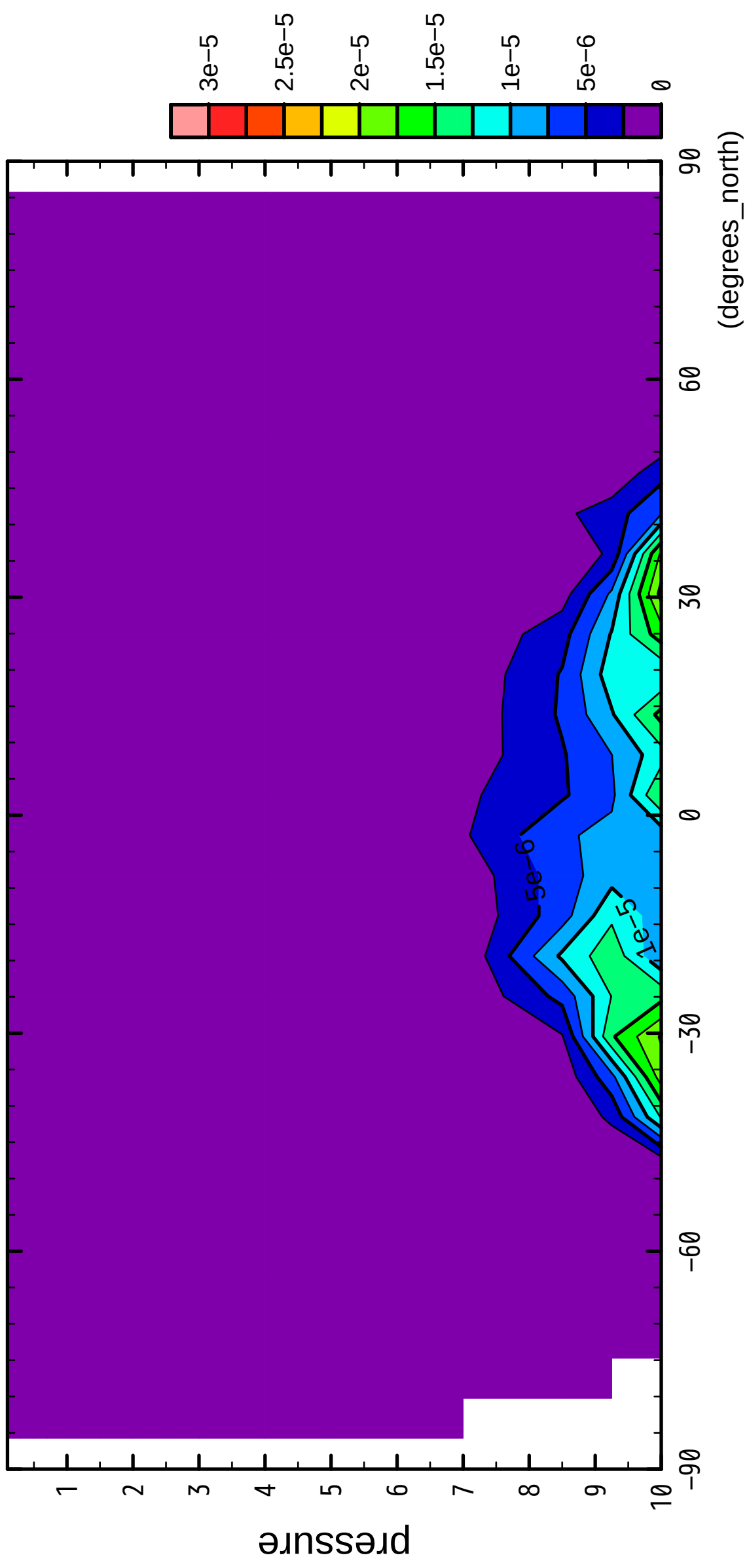


CONTOUR INTERVAL = 2.500×10^{-6}

5/12

QH2OLiq

($\times 10^4$ Pa)

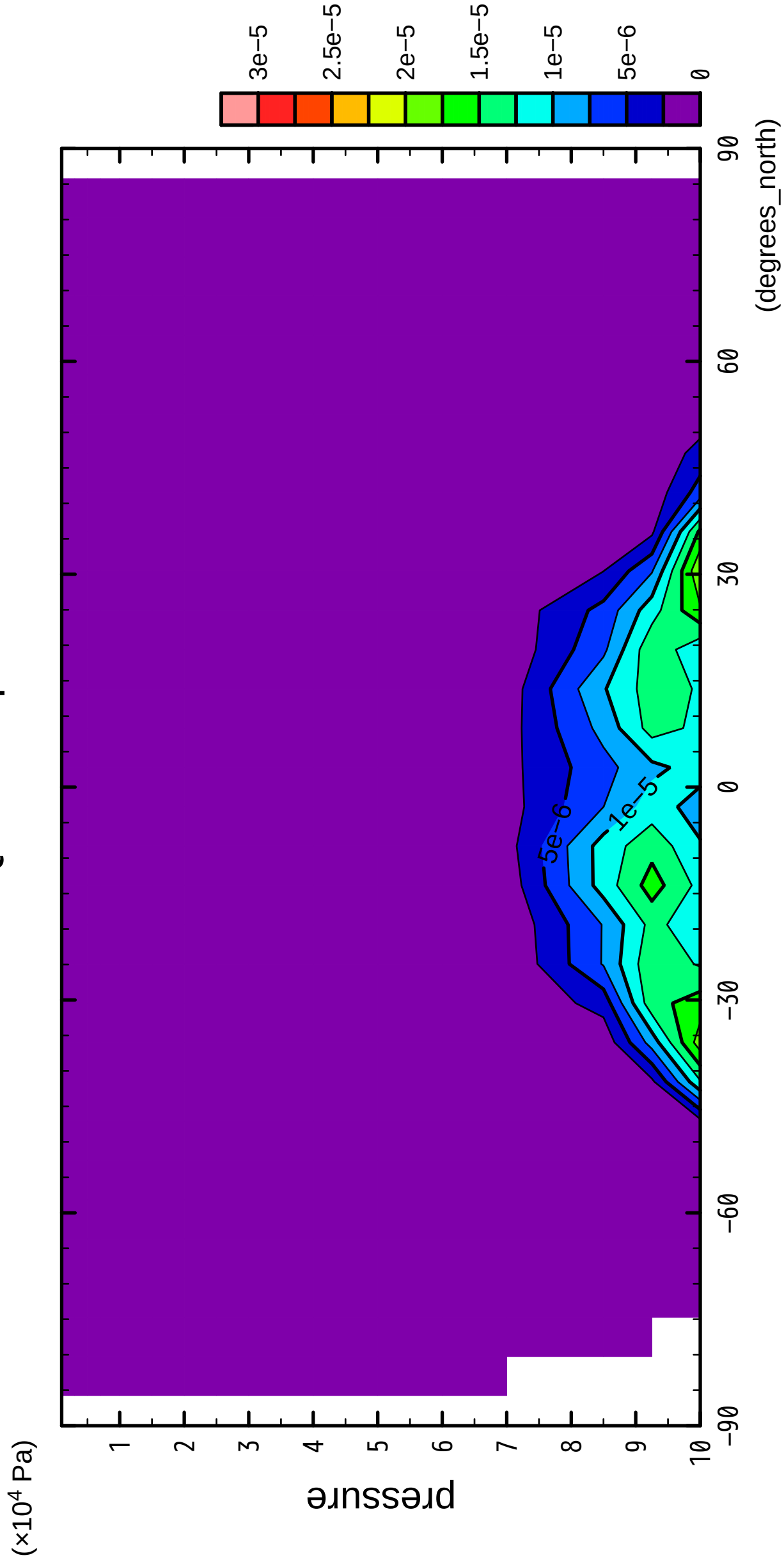


latitude

CONTOUR INTERVAL = 2.500E-06

6/12

QH2OLiq



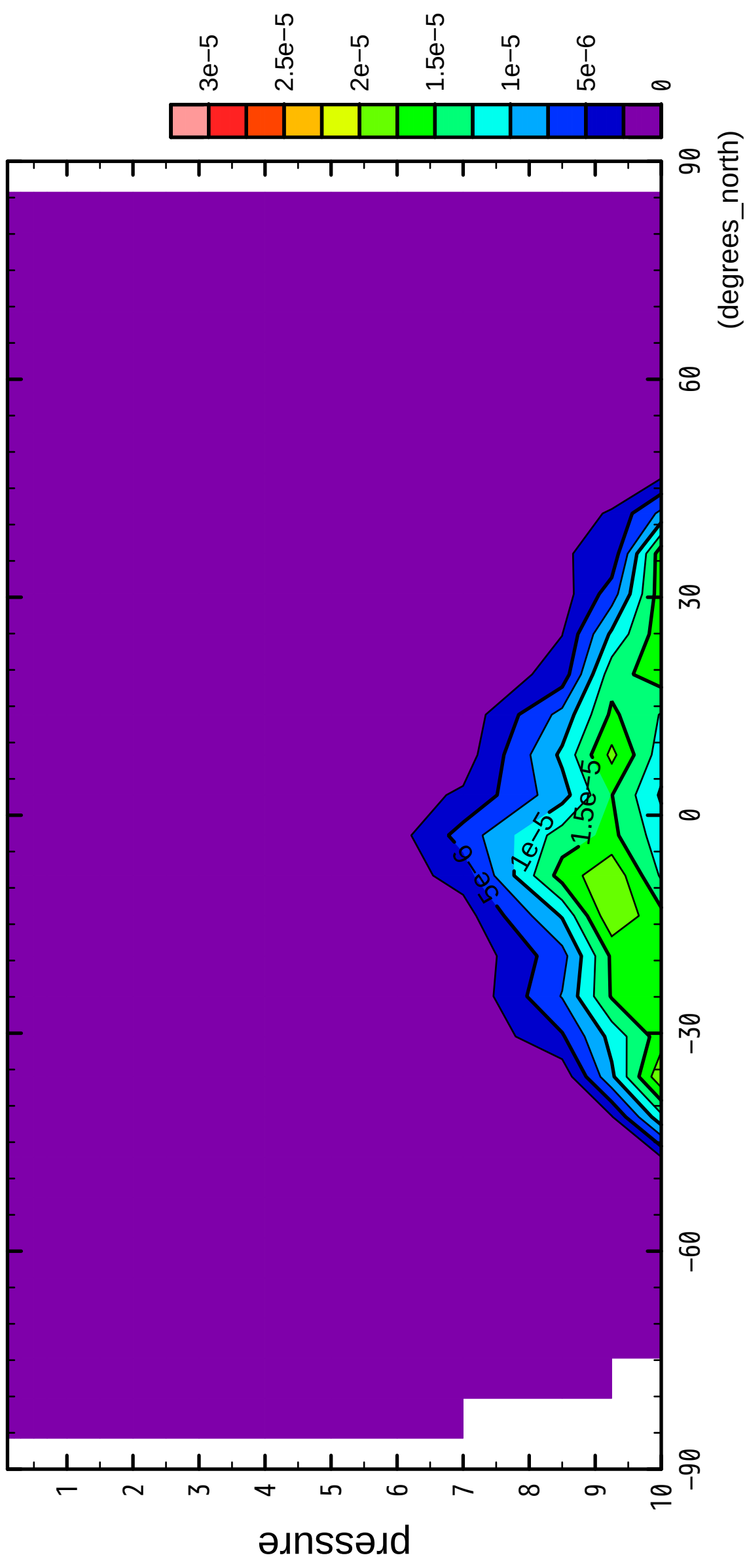
latitude

CONTOUR INTERVAL = 2.500E-06

7/12

QH2OLiq

($\times 10^4$ Pa)

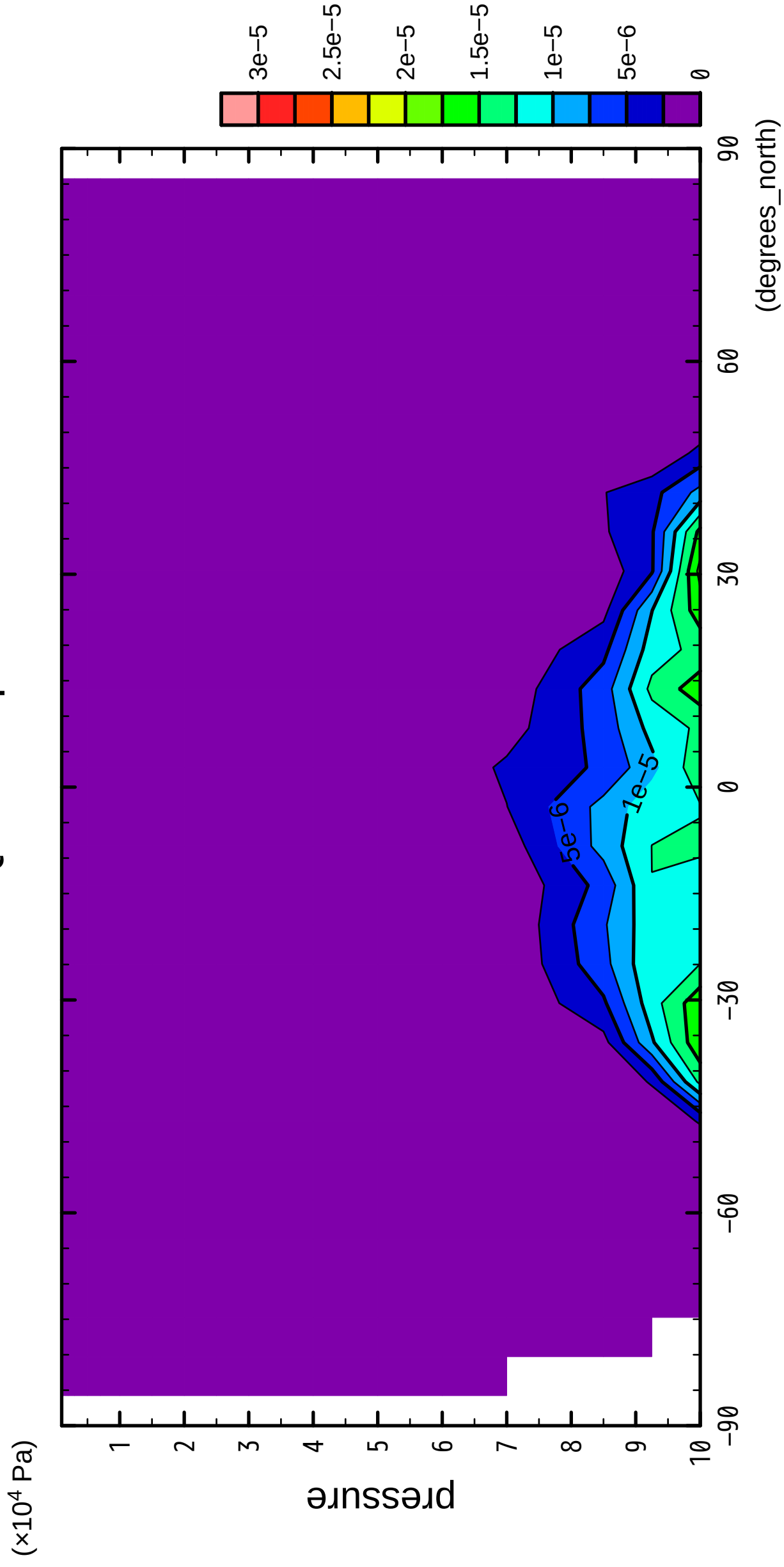


latitude

CONTOUR INTERVAL = $2.500E-06$

8/12

QH2OLiq



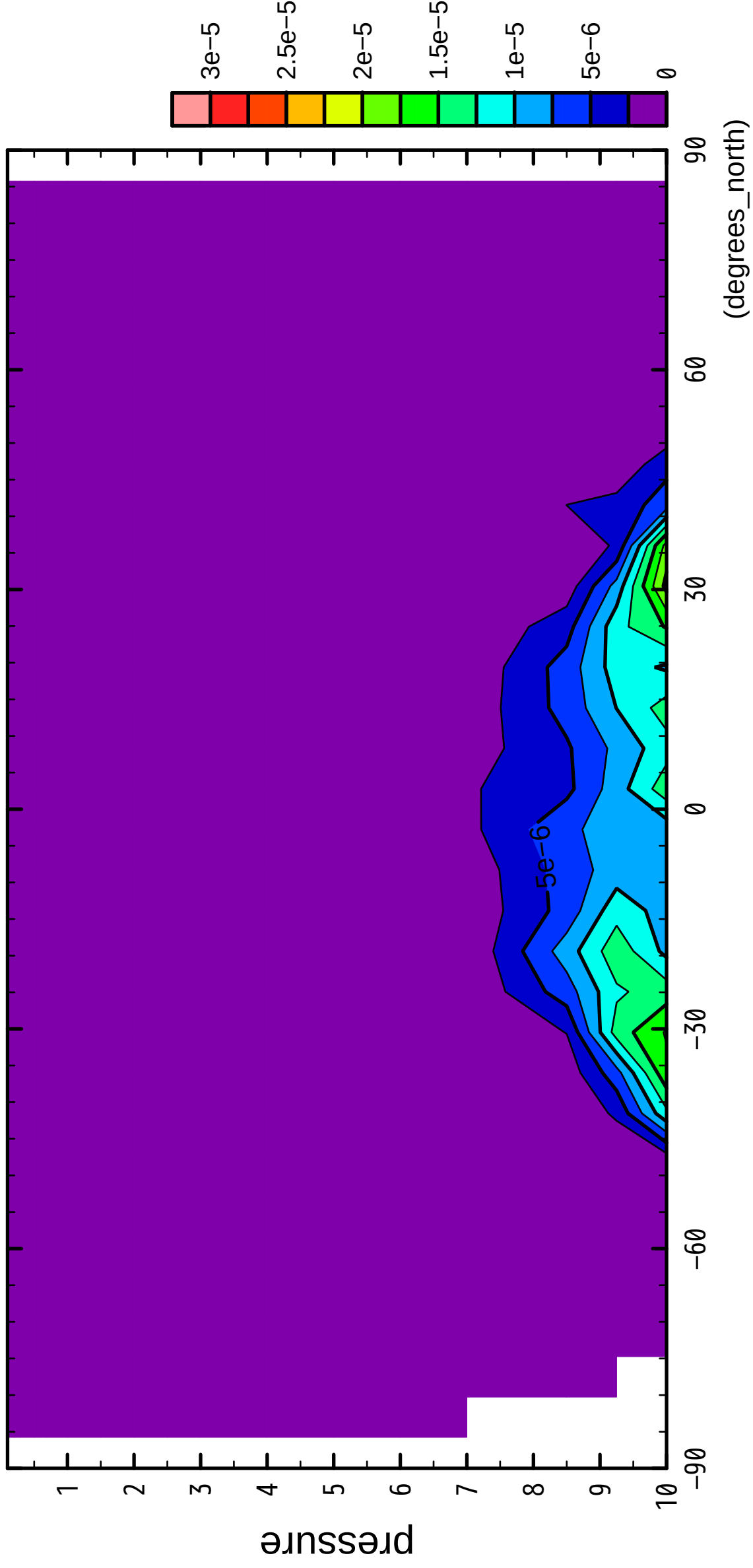
latitude

CONTOUR INTERVAL = 2.500×10^{-6}

9/12

QH2OLiq

($\times 10^4$ Pa)



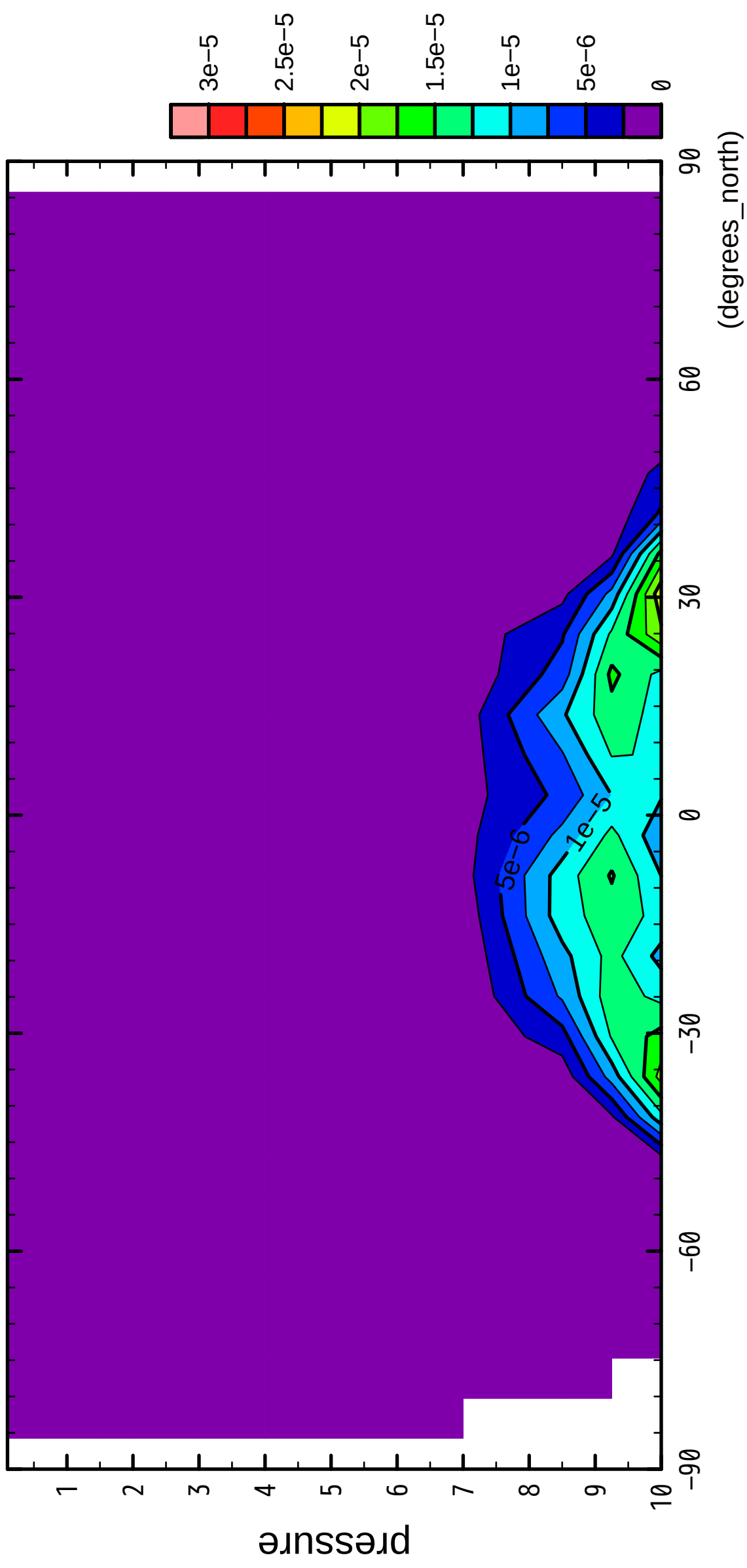
latitude

CONTOUR INTERVAL = $2.500E-06$

10/12

QH2OLiq

($\times 10^4$ Pa)



latitude

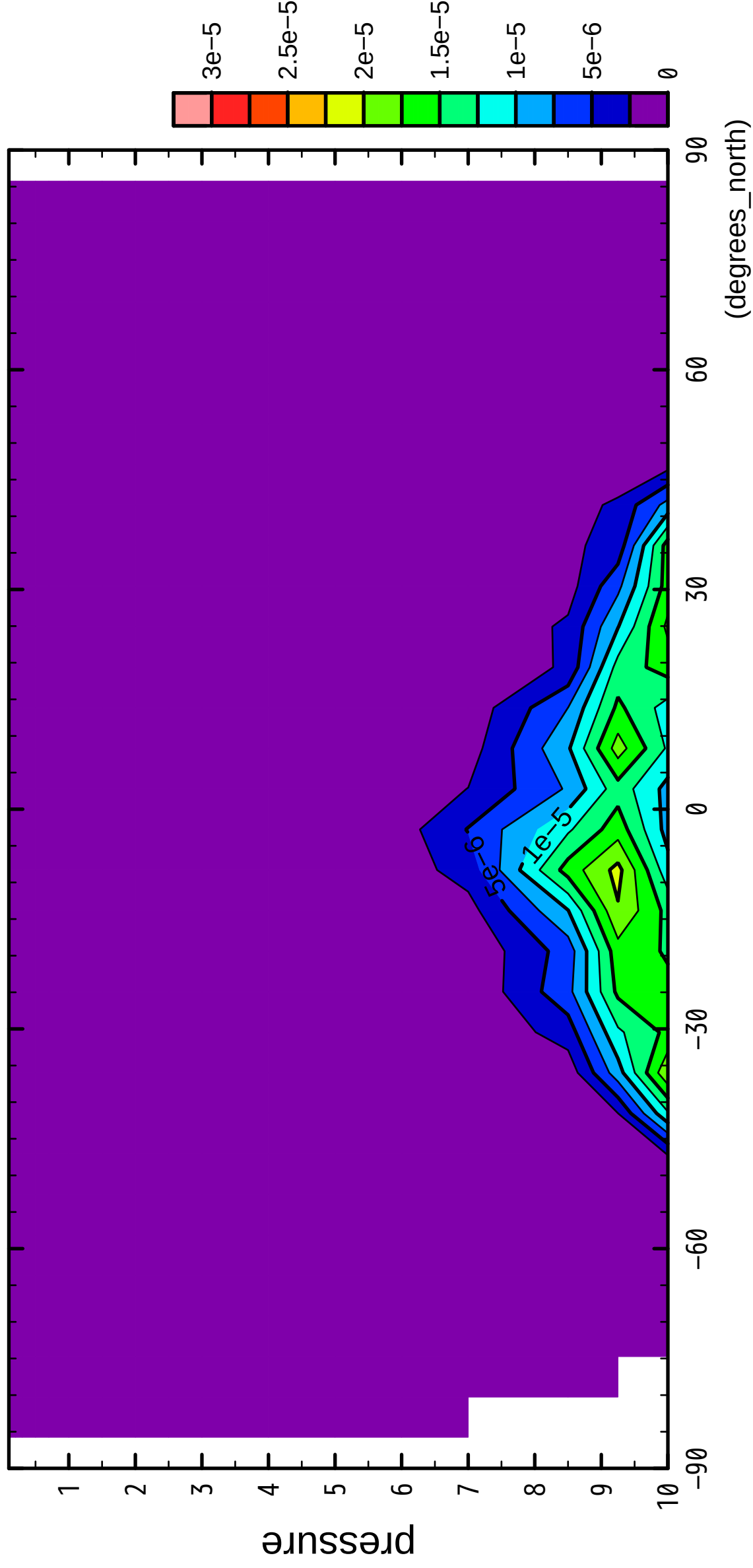
(degrees_north)

CONTOUR INTERVAL = 2.500×10^{-6}

11/12

QH2OLiq

($\times 10^4$ Pa)



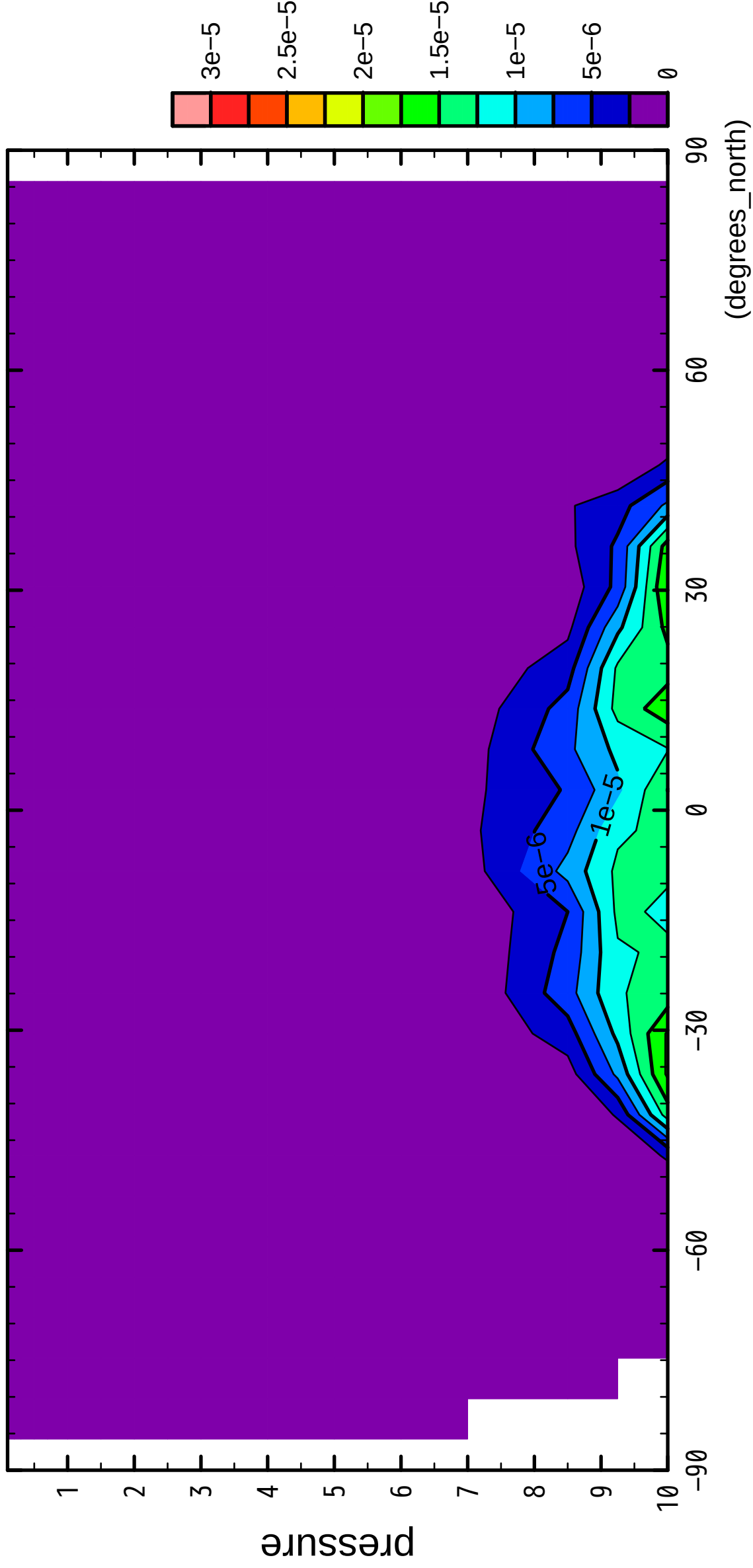
latitude

CONTOUR INTERVAL = $2.500E-06$

12/12

QH2OLiq

($\times 10^4$ Pa)



CONTOUR INTERVAL = 2.500E-06