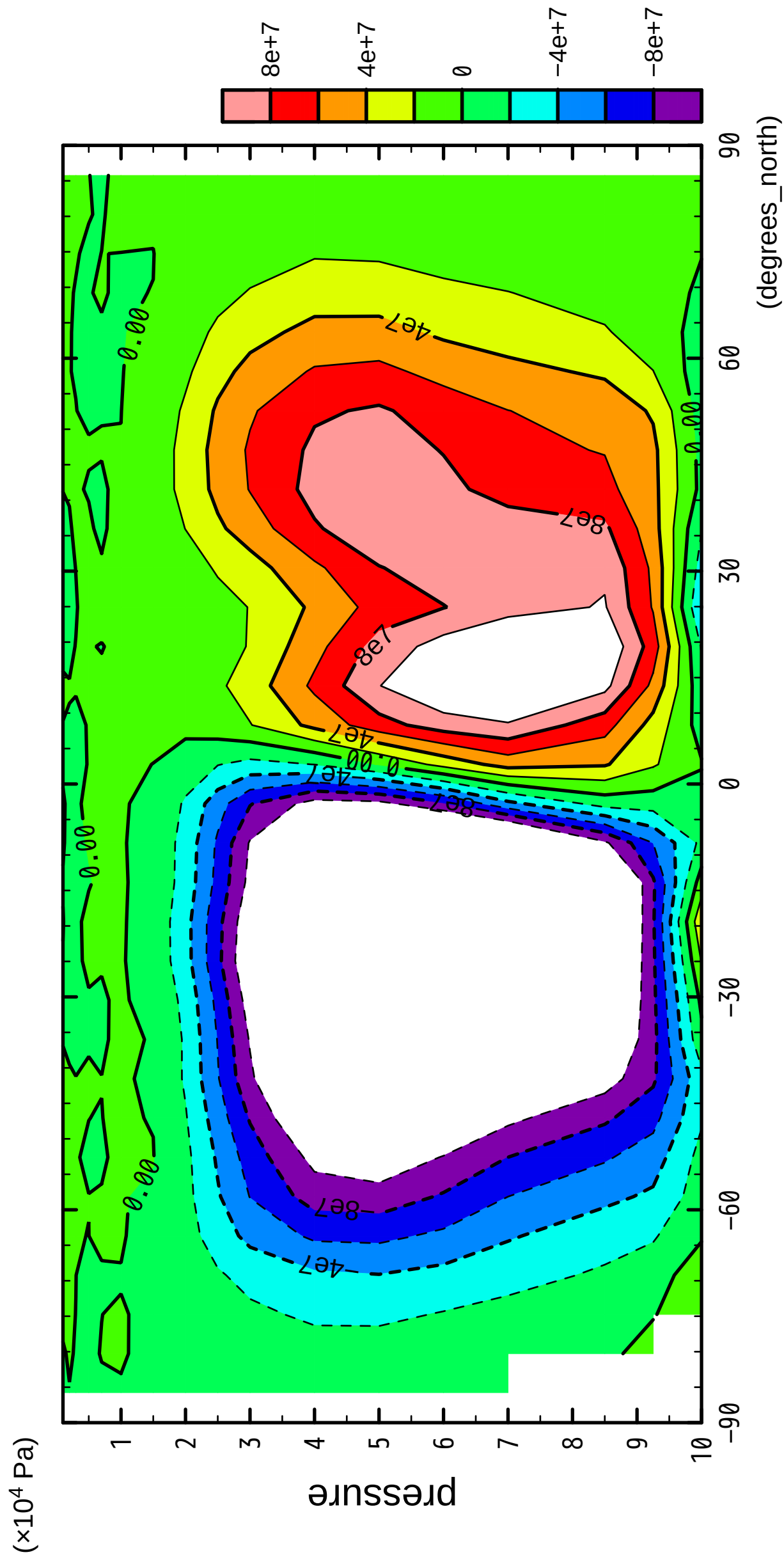


1/12

MSF

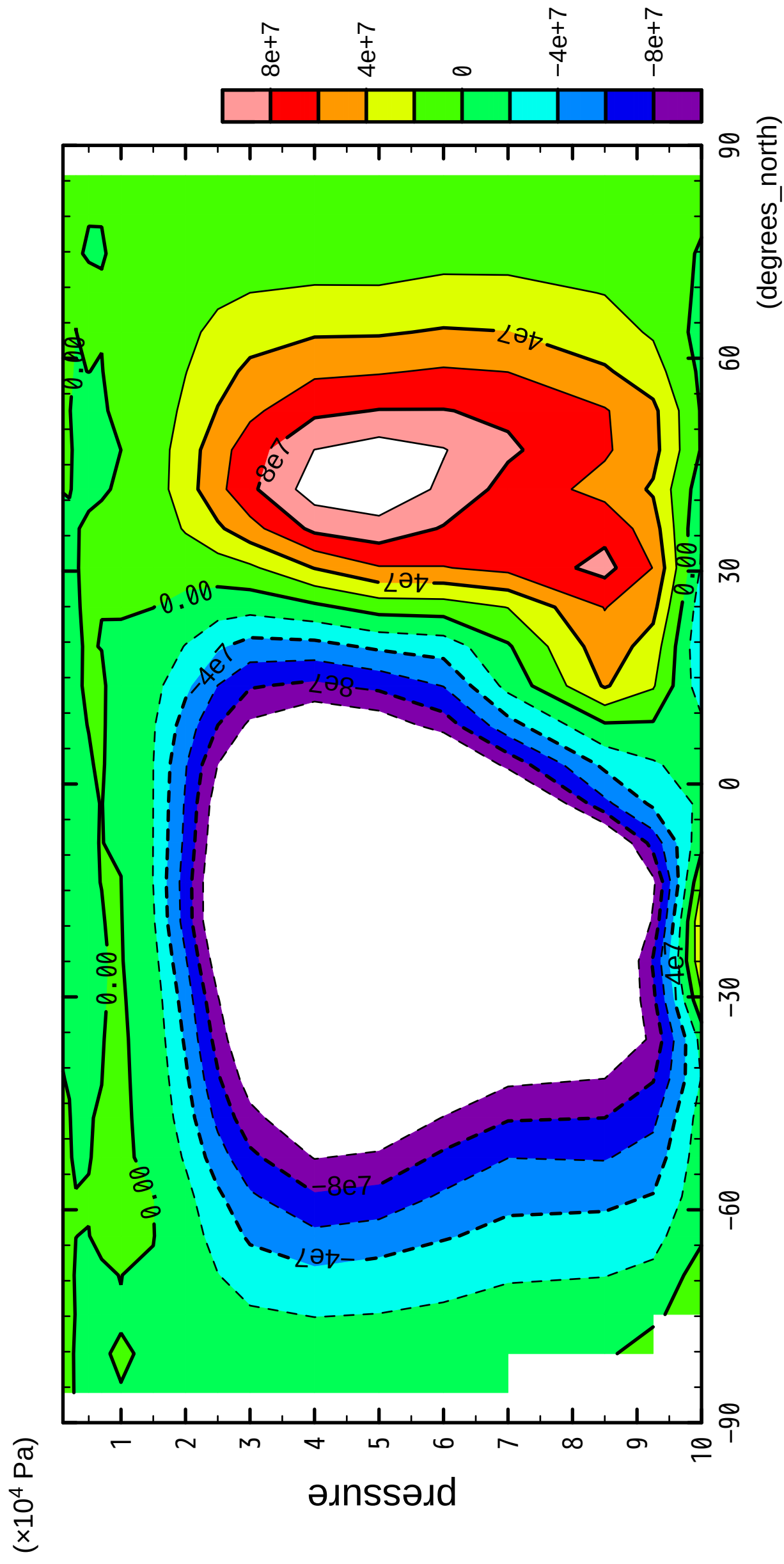


latitude

CONTOUR INTERVAL = 2.000E+07

2/12

MSF

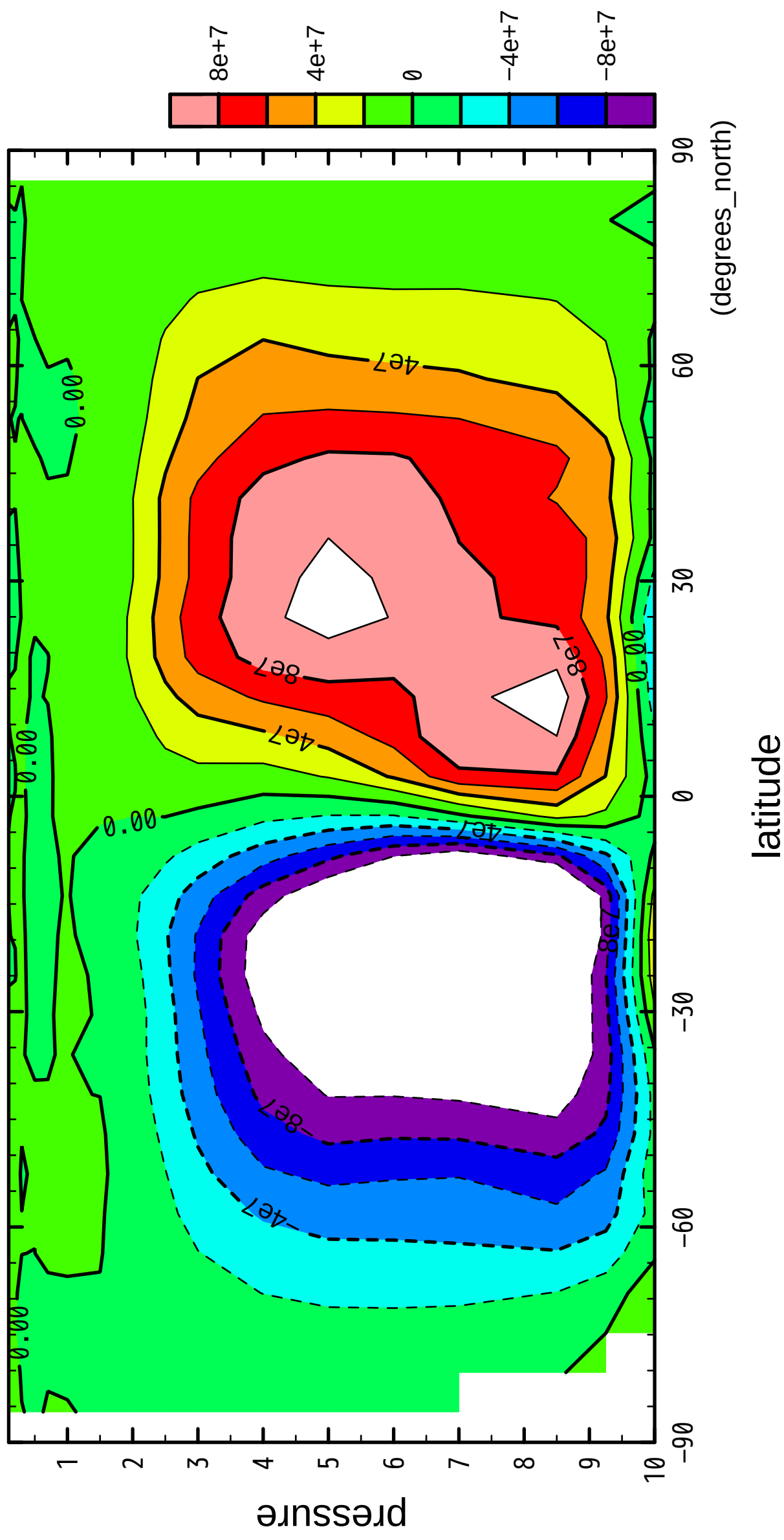


CONTOUR INTERVAL = 2.000E+07

3/12

MSF

($\times 10^4$ Pa)



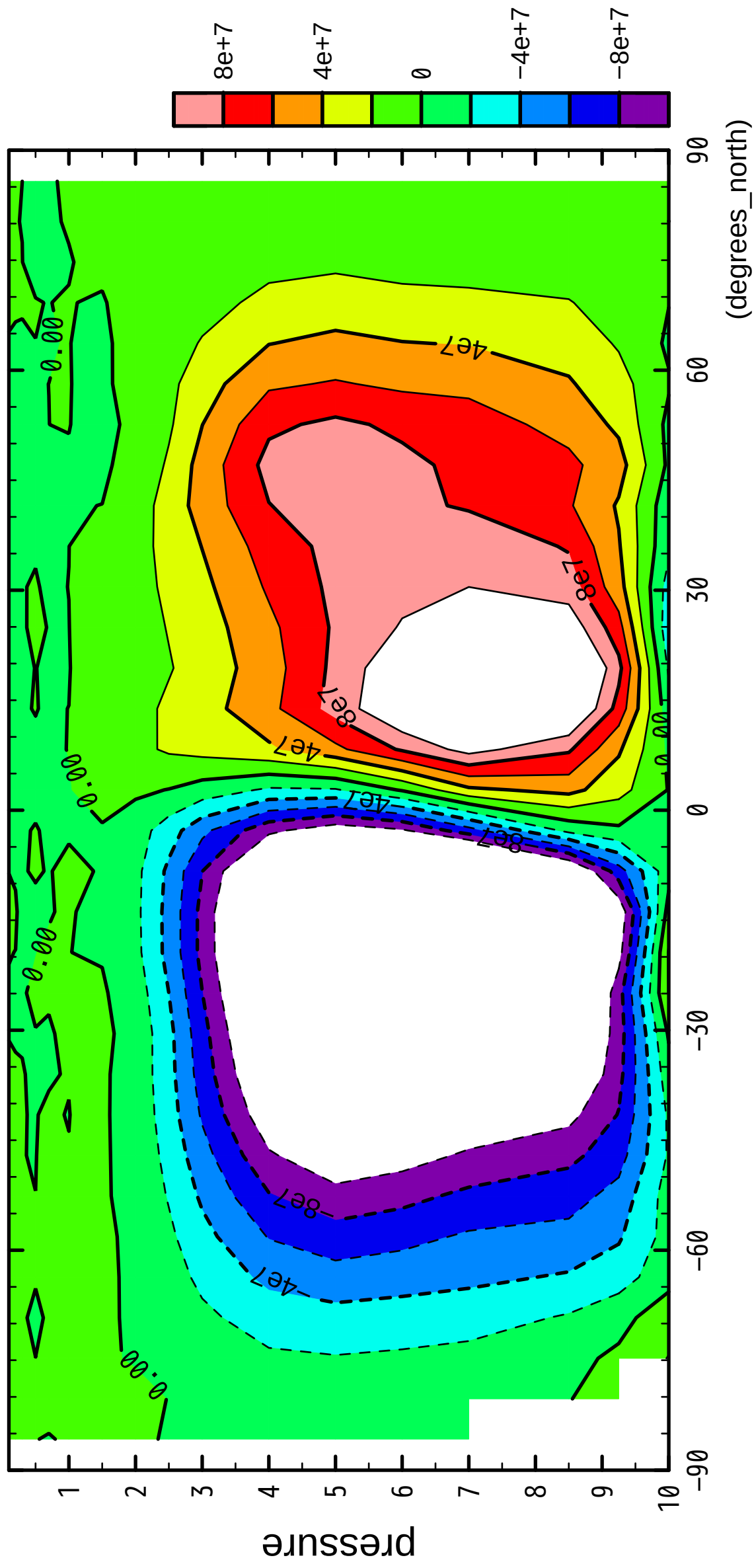
latitude

CONTOUR INTERVAL = 2.000E+07

4/12

MSF

($\times 10^4$ Pa)

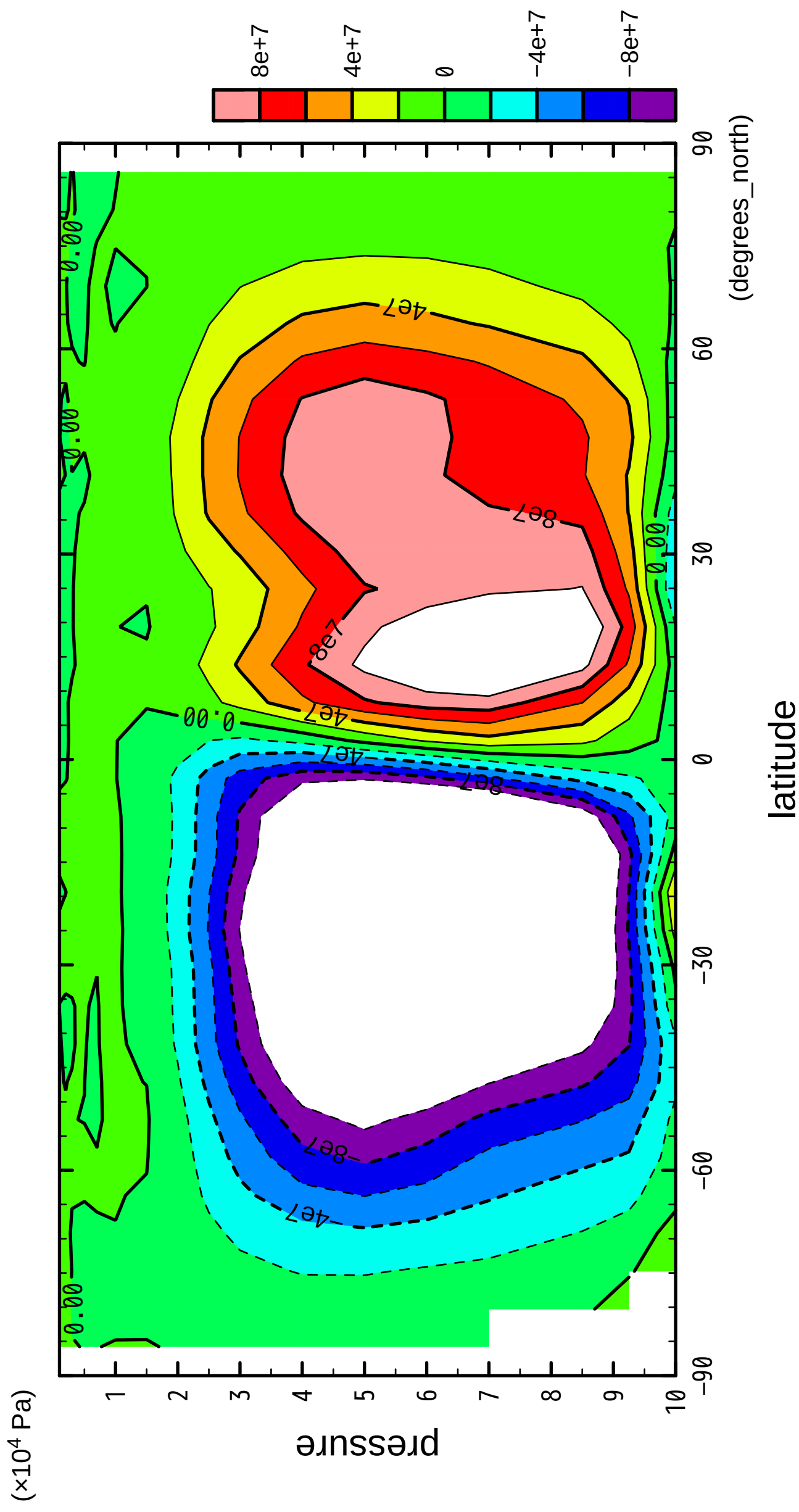


latitude

CONTOUR INTERVAL = 2.000E+07

5/12

MSF

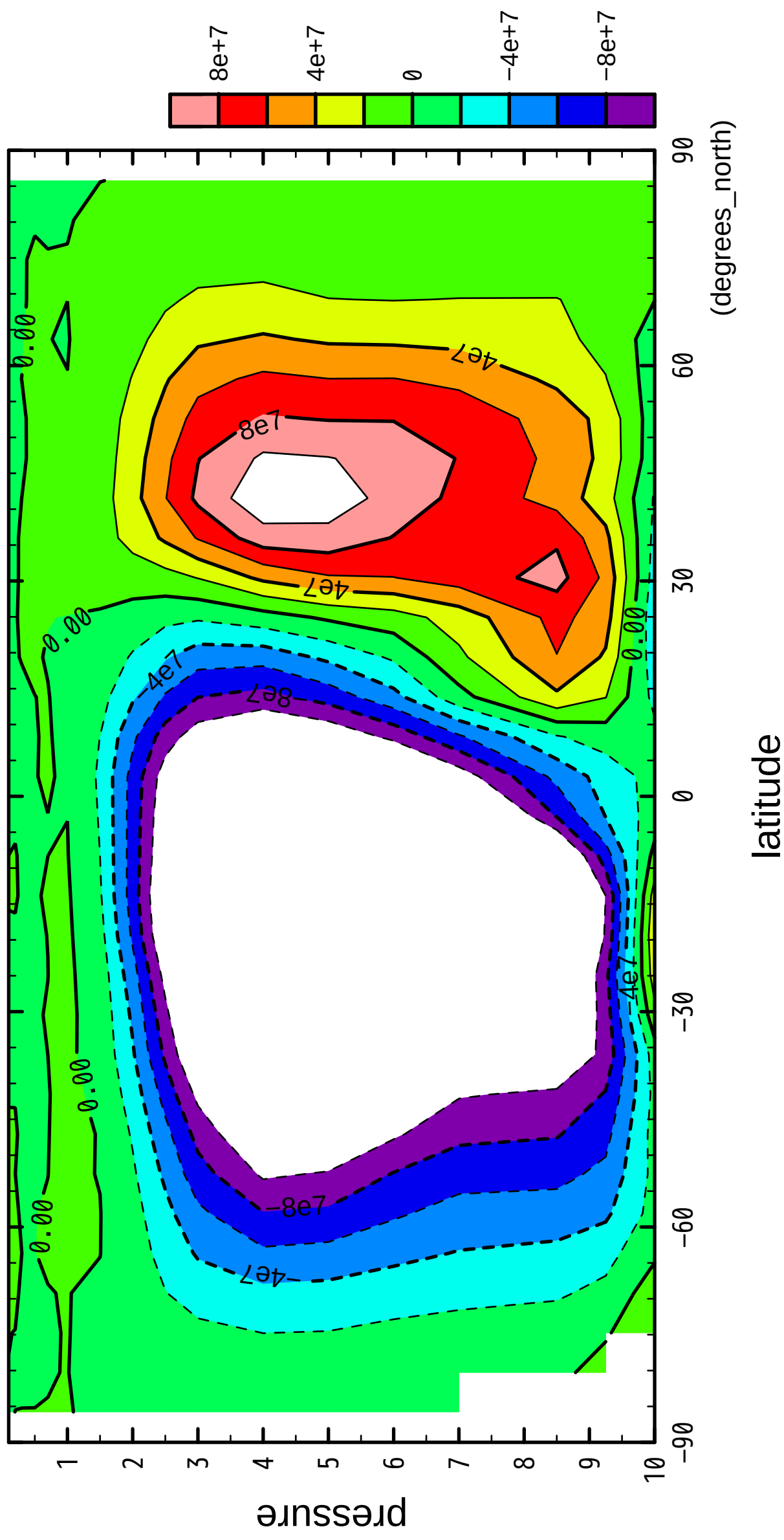


CONTOUR INTERVAL = 2.000E+07

6/12

MSF

($\times 10^4$ Pa)

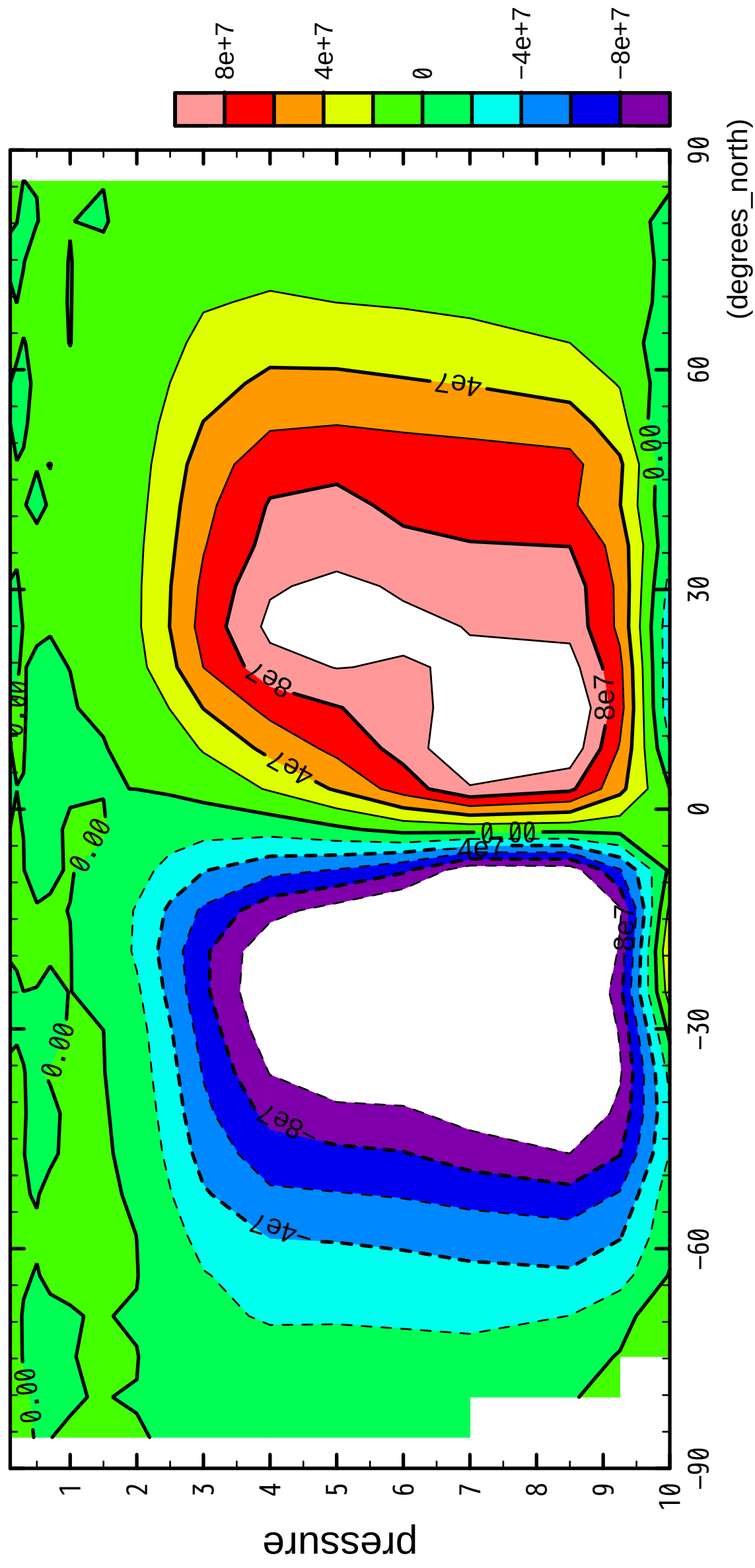


CONTOUR INTERVAL = 2.000×10^7

7/12

MSF

($\times 10^4$ Pa)



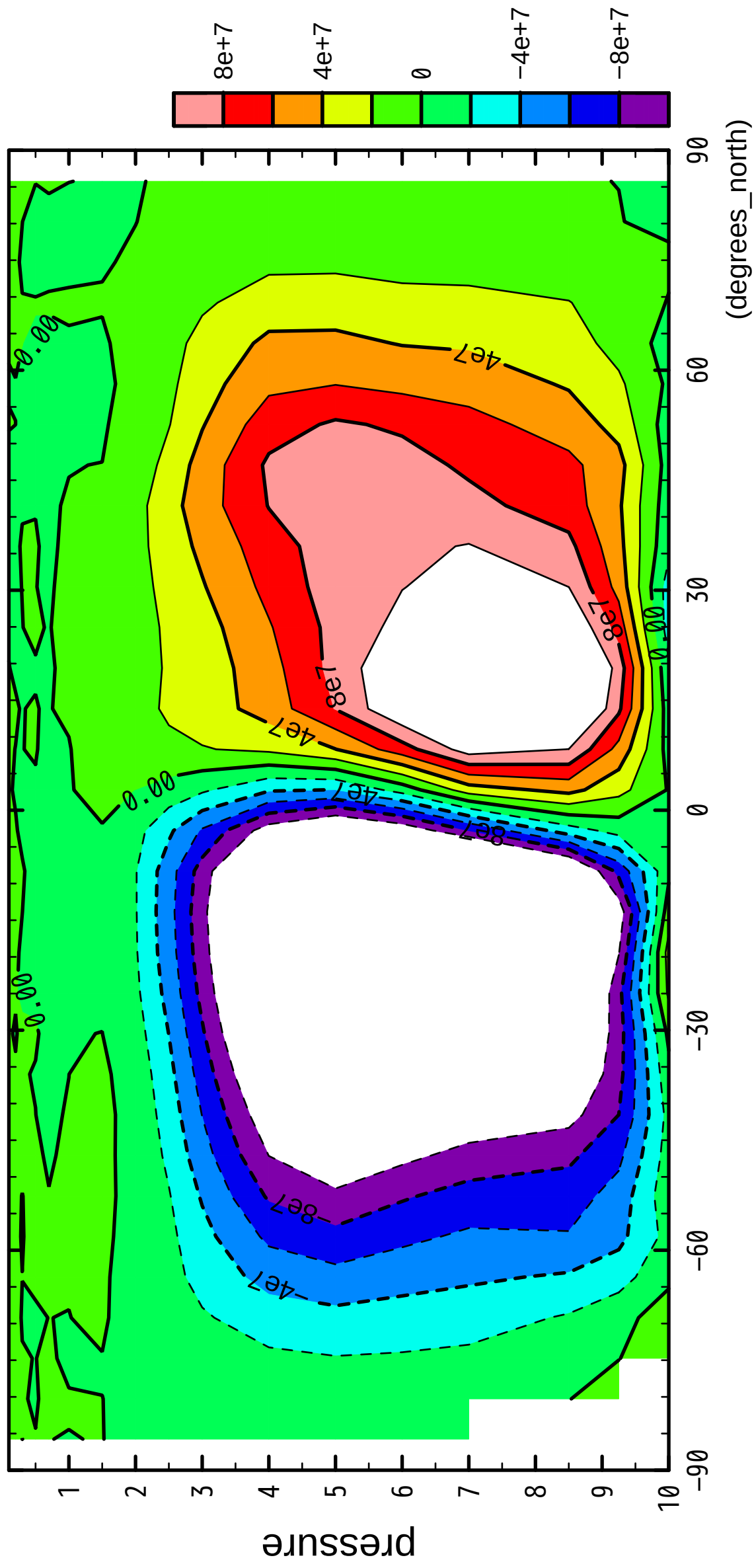
latitude

CONTOUR INTERVAL = 2.000E+07

8/12

MSF

($\times 10^4$ Pa)



latitude

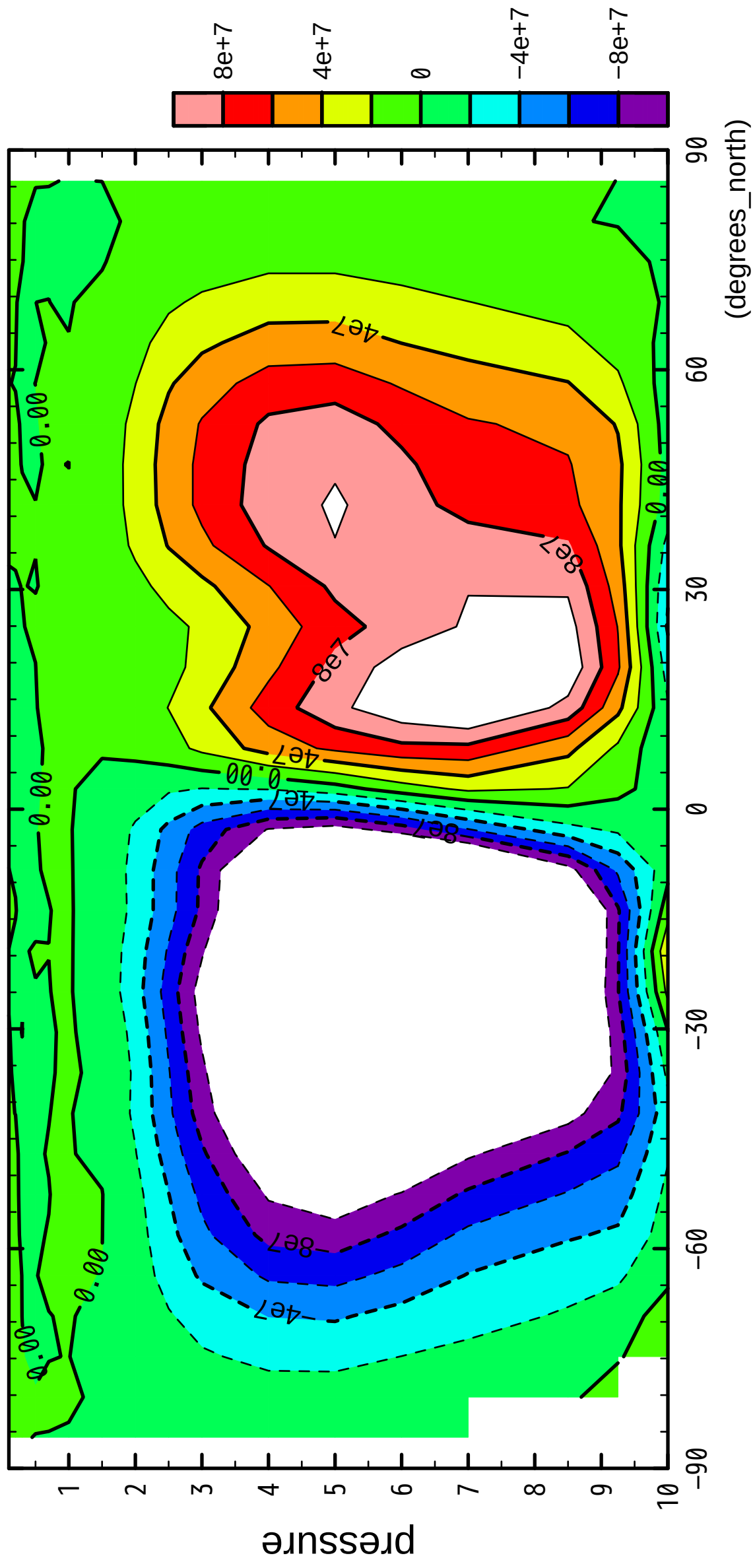
(degrees_north)

CONTOUR INTERVAL = $2.000E+07$

9/12

MSF

($\times 10^4$ Pa)



latitude

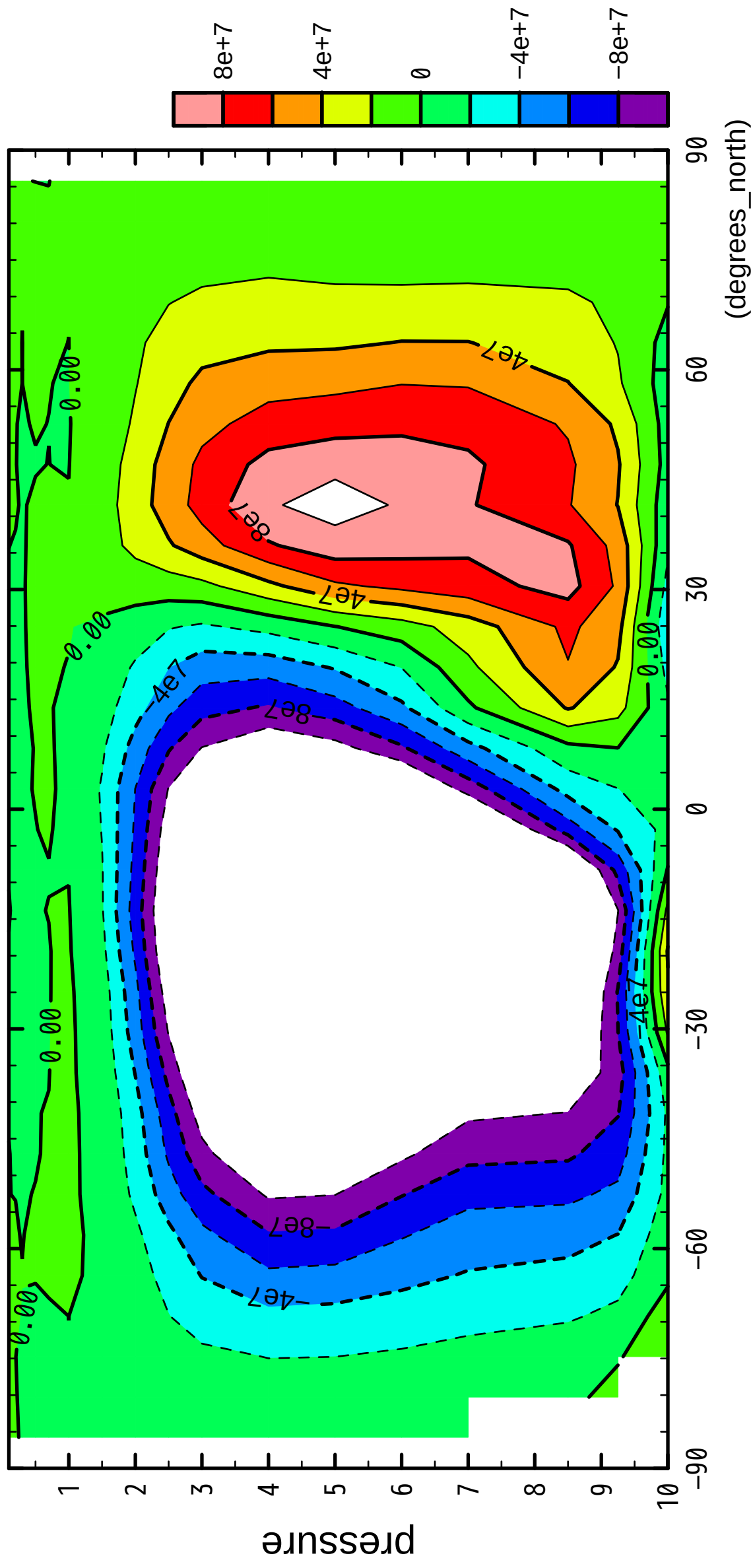
(degrees_north)

CONTOUR INTERVAL = 2.000E+07

10/12

MSF

($\times 10^4$ Pa)



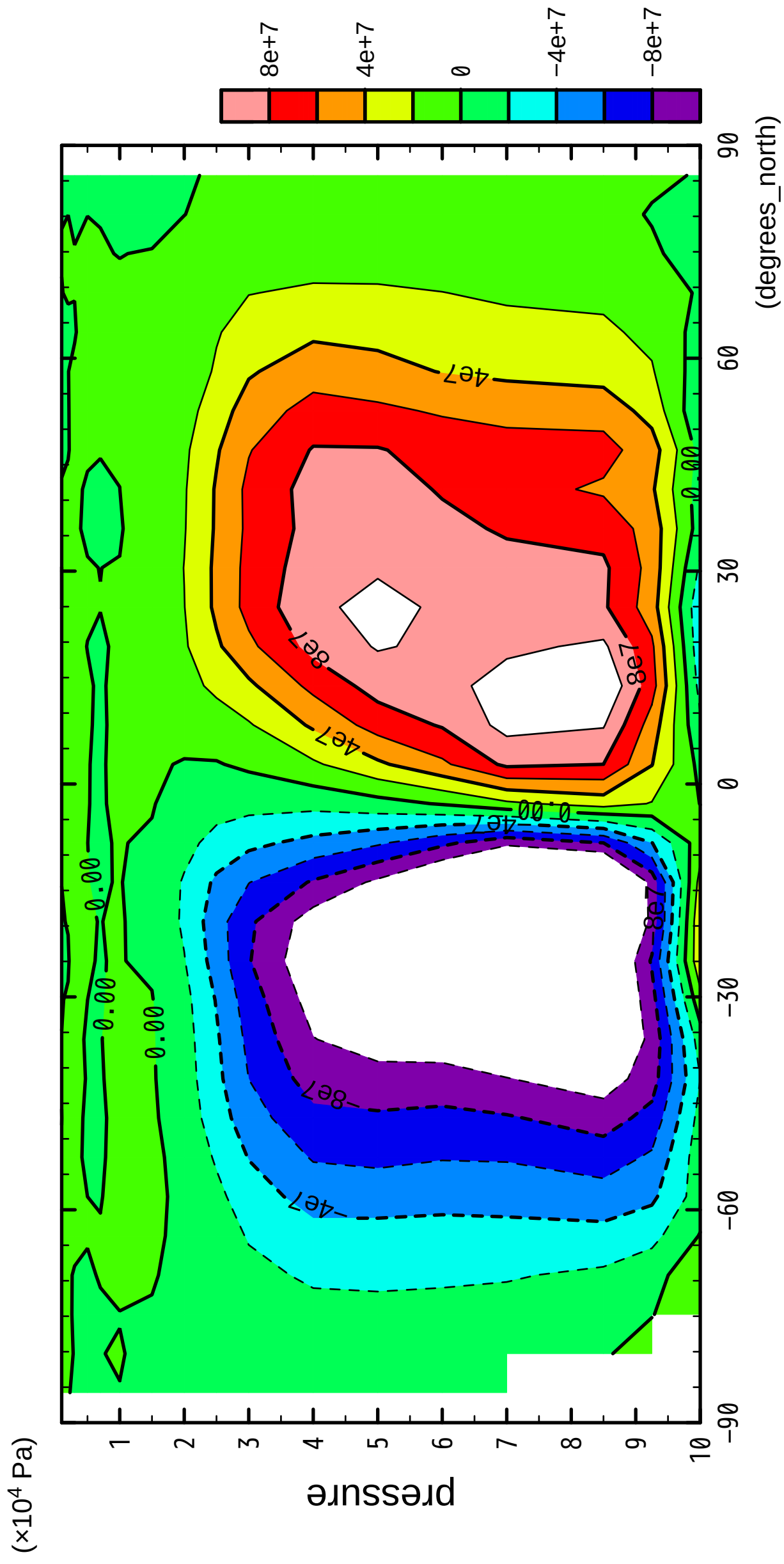
latitude

(degrees_north)

CONTOUR INTERVAL = 2.000E+07

11/12

MSF

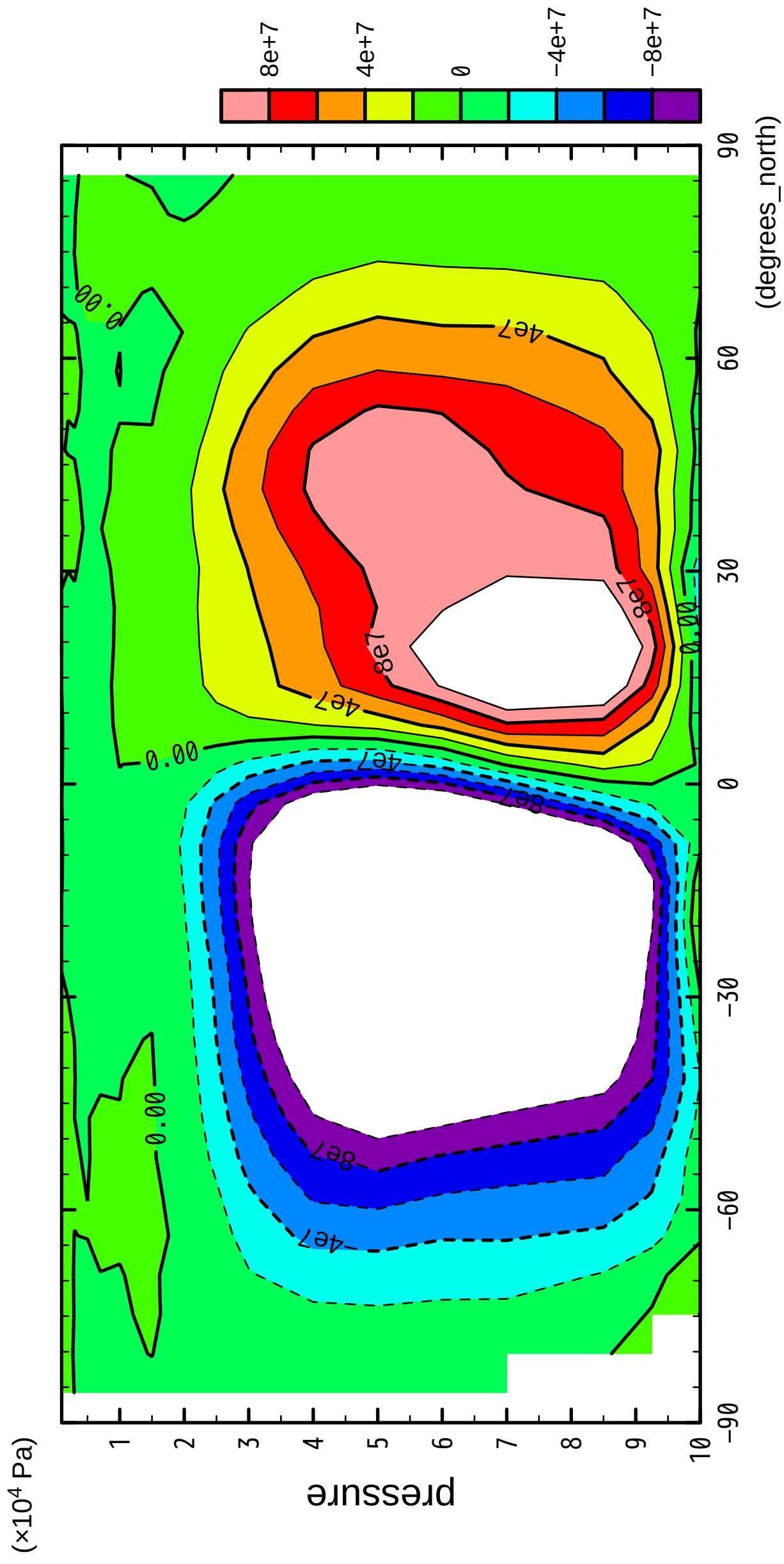


latitude

CONTOUR INTERVAL = 2.000E+07

12/12

MSF



latitude

CONTOUR INTERVAL = 2.000E+07