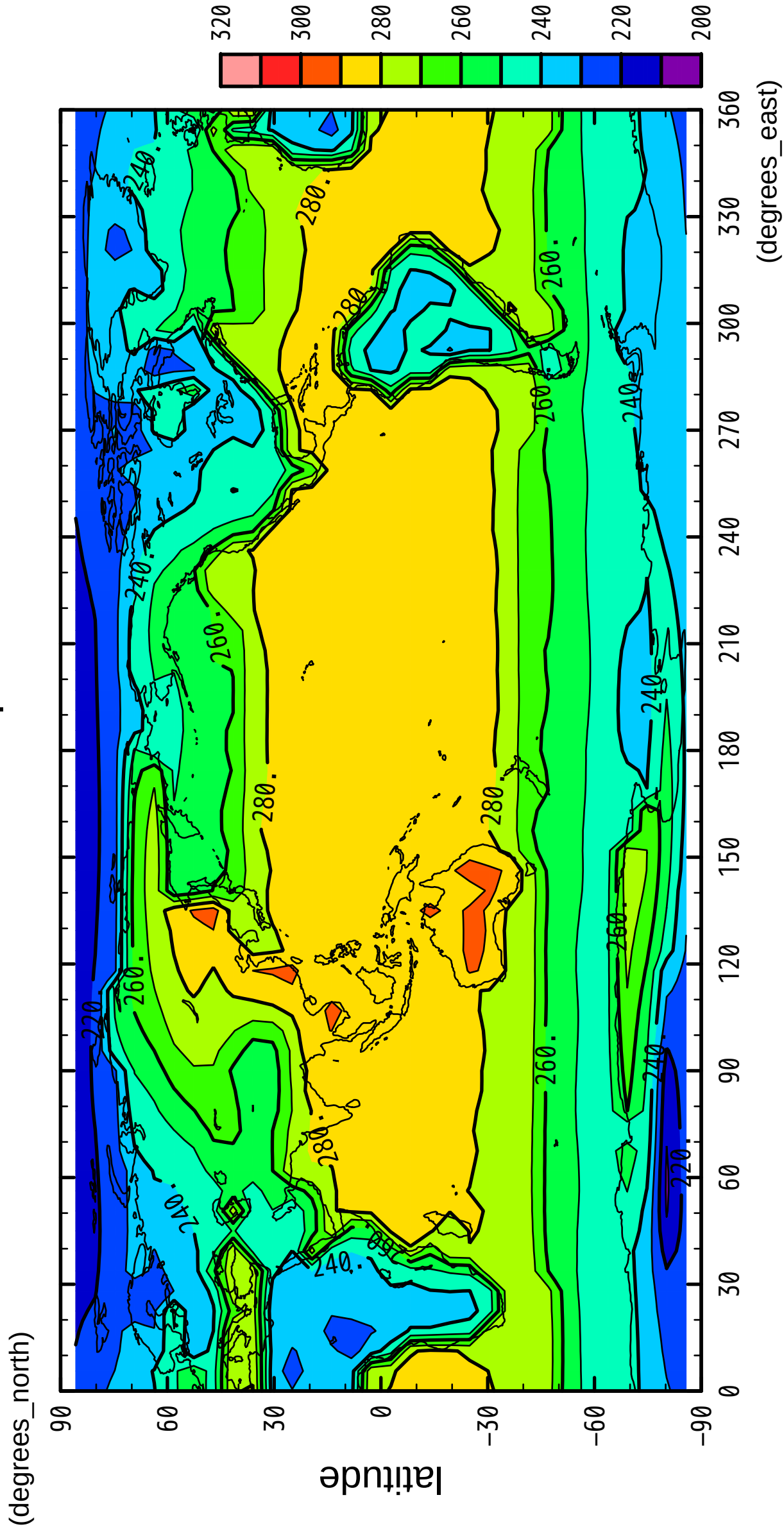


1/12

surface temperature



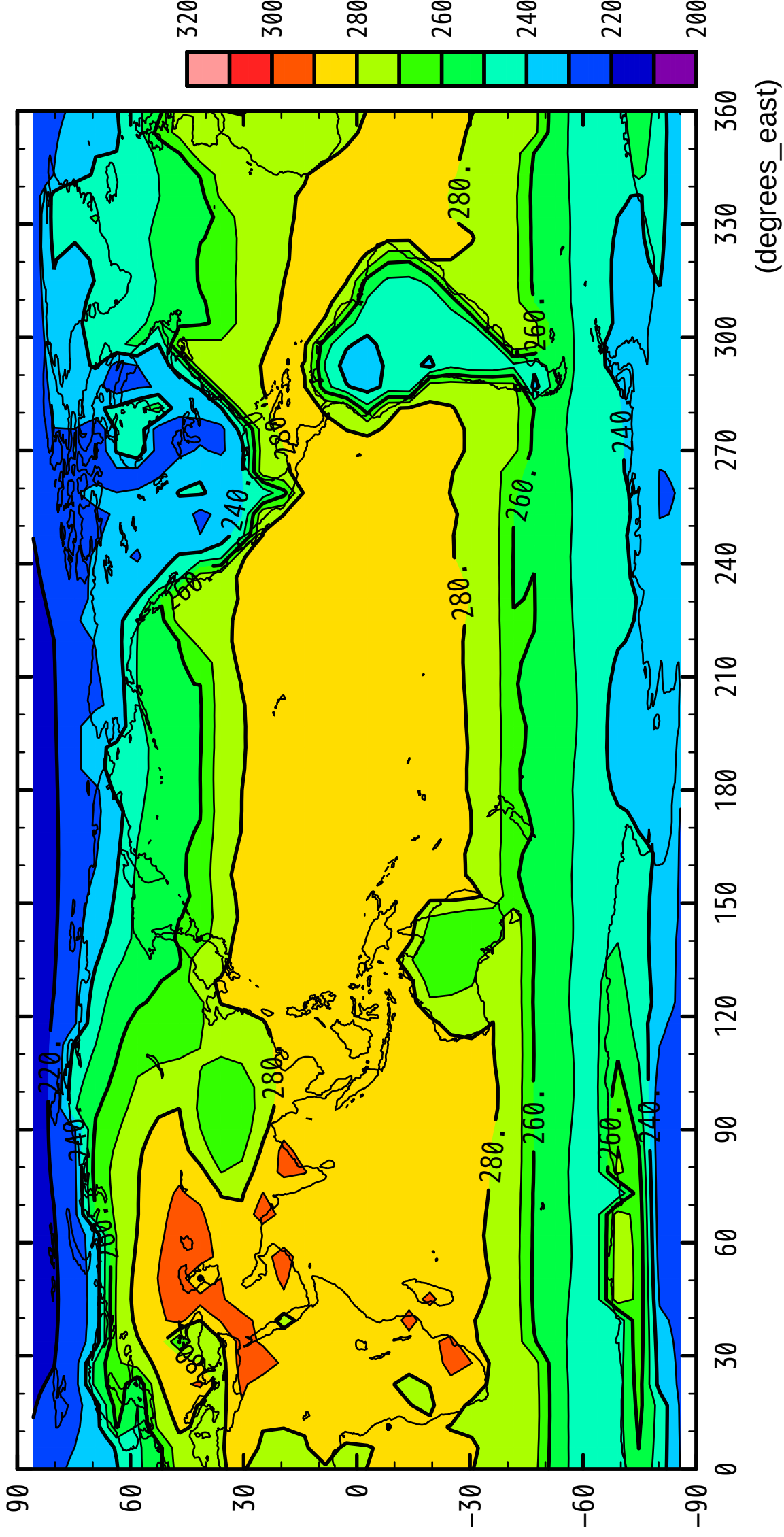
longitude

CONTOUR INTERVAL = 1.000E+01

2/12

surface temperature

(degrees_north)

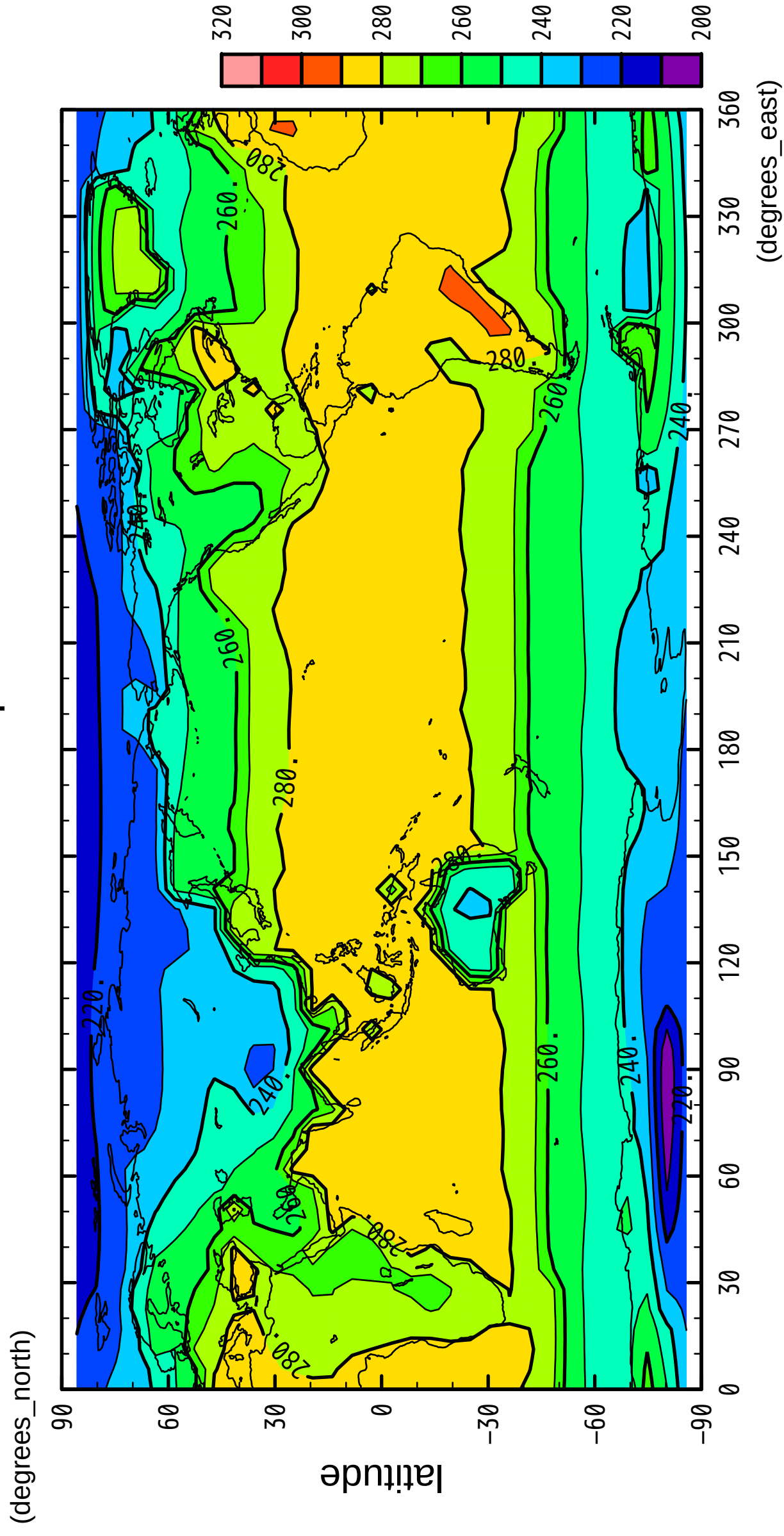


longitude

CONTOUR INTERVAL = 1.000E+01

3/12

surface temperature

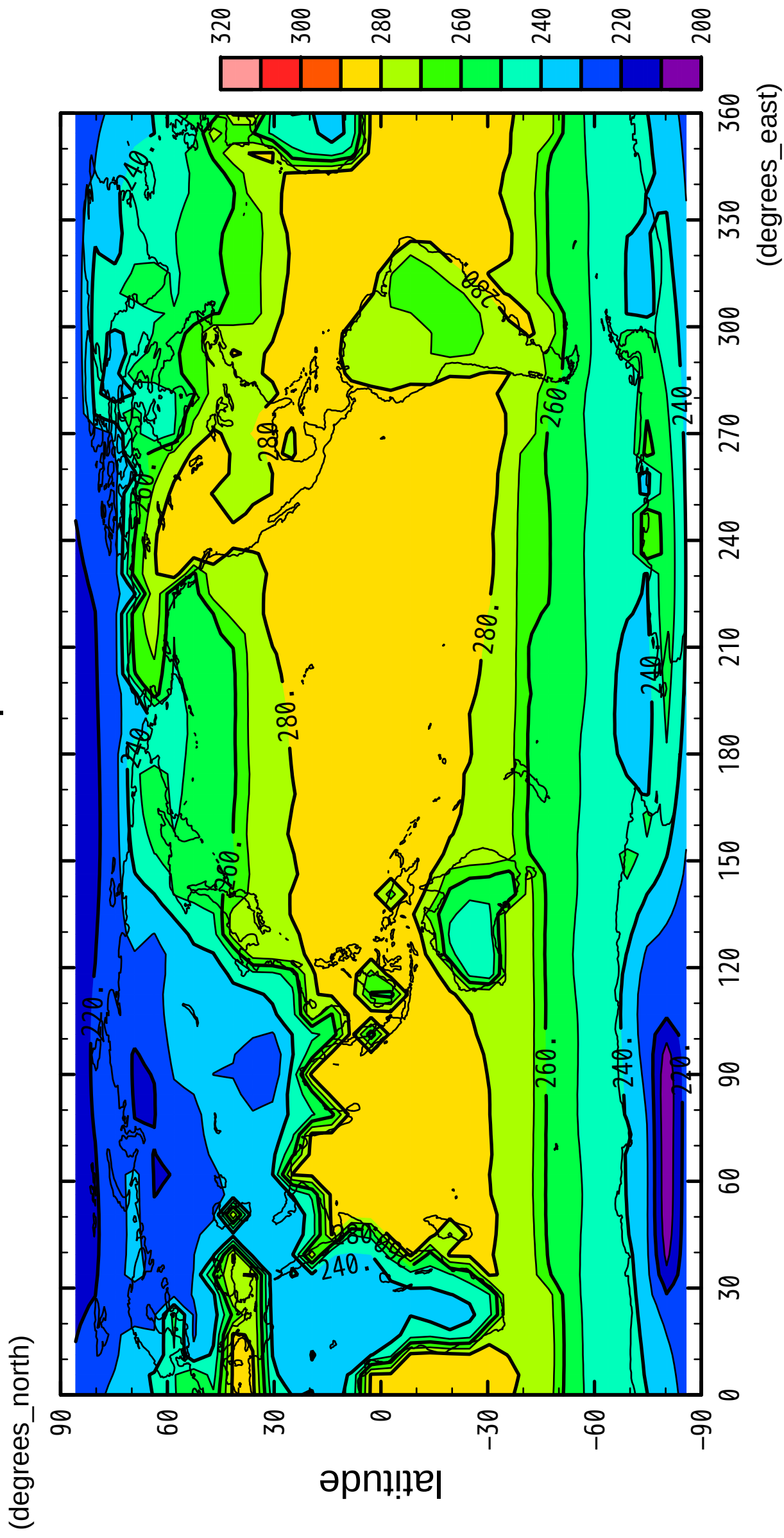


longitude

CONTOUR INTERVAL = 1.000E+01

4/12

surface temperature

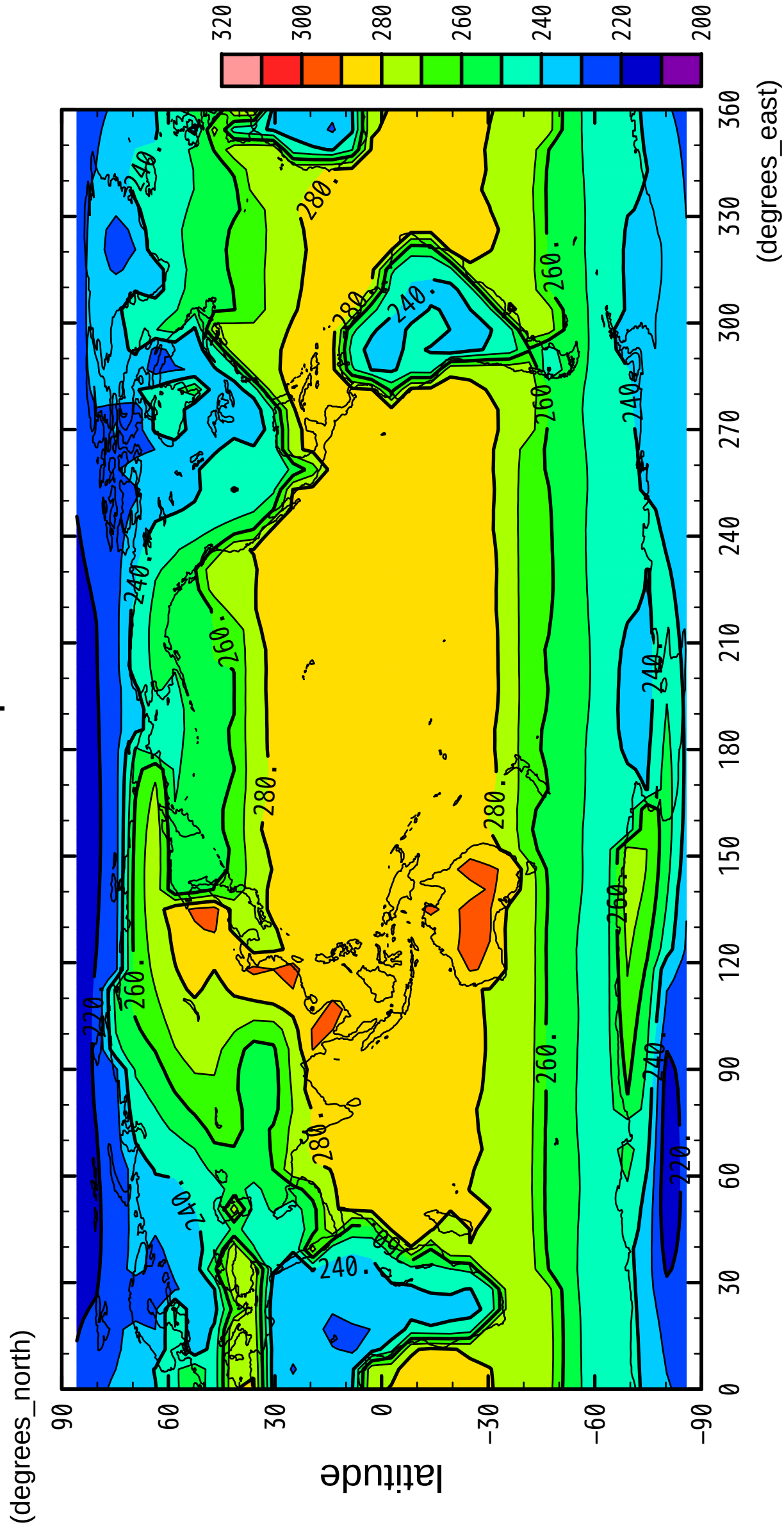


longitude

CONTOUR INTERVAL = 1.000E+01

5/12

surface temperature

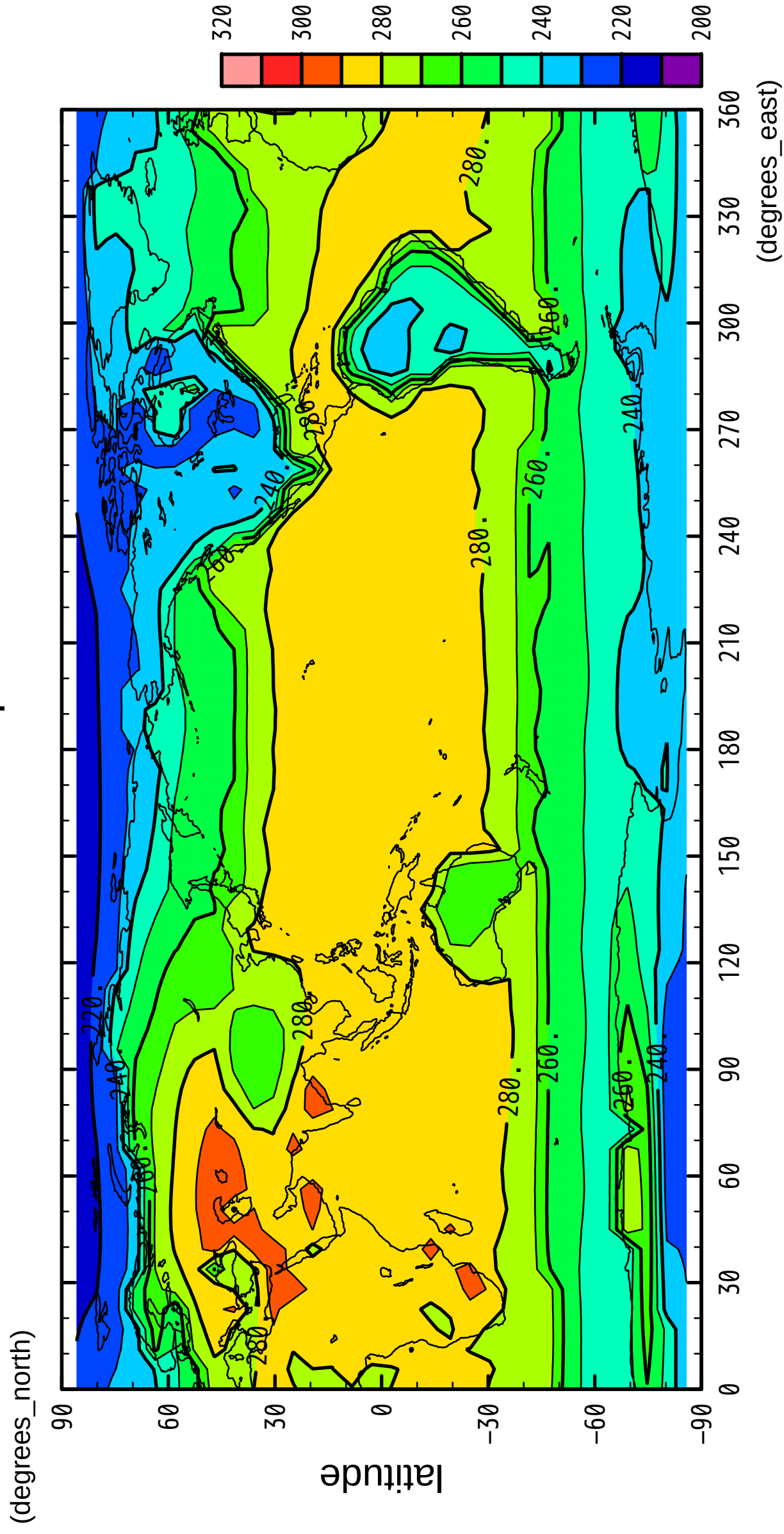


longitude

CONTOUR INTERVAL = 1.000E+01

6/12

surface temperature

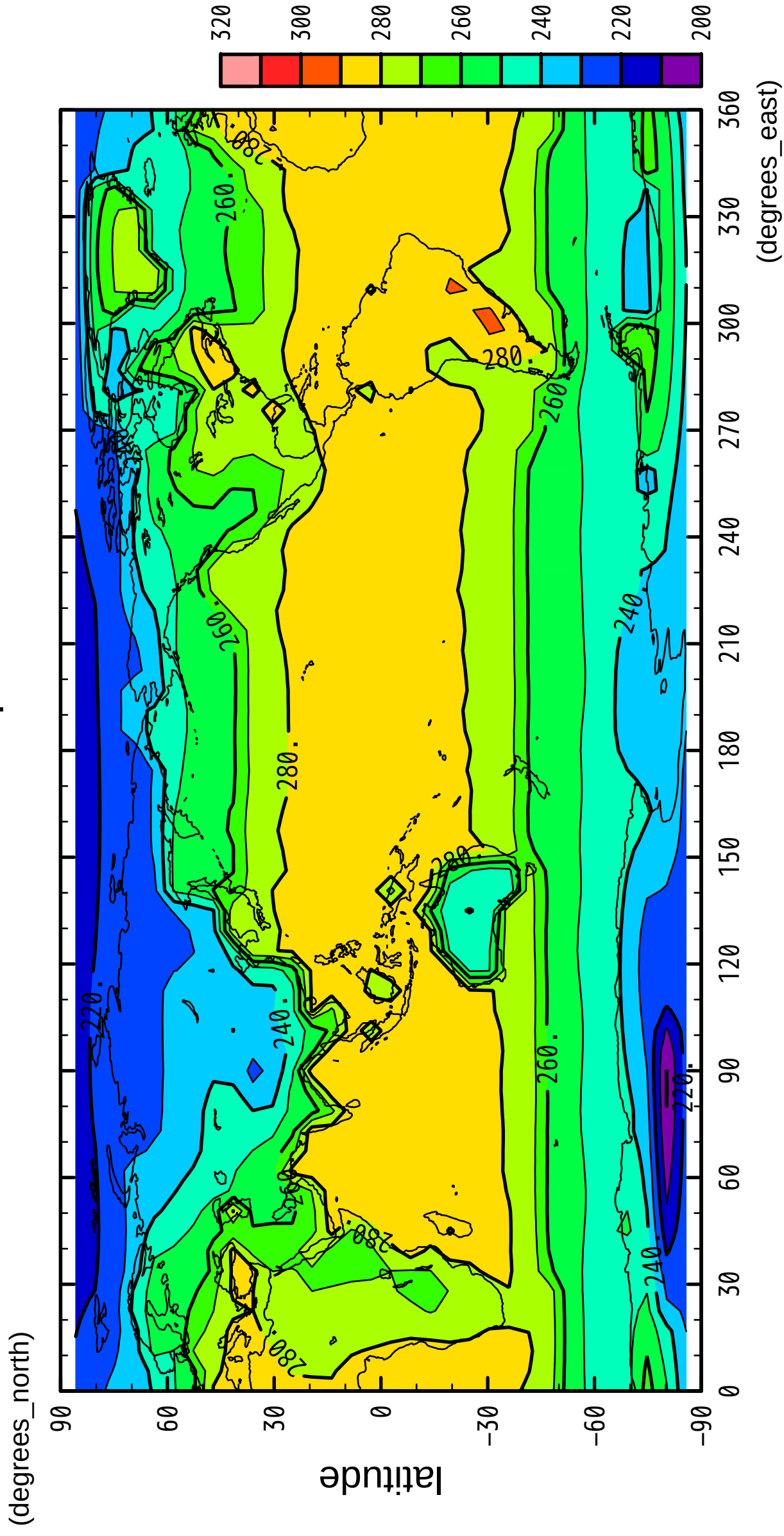


longitude

CONTOUR INTERVAL = 1.000E+01

7/12

surface temperature

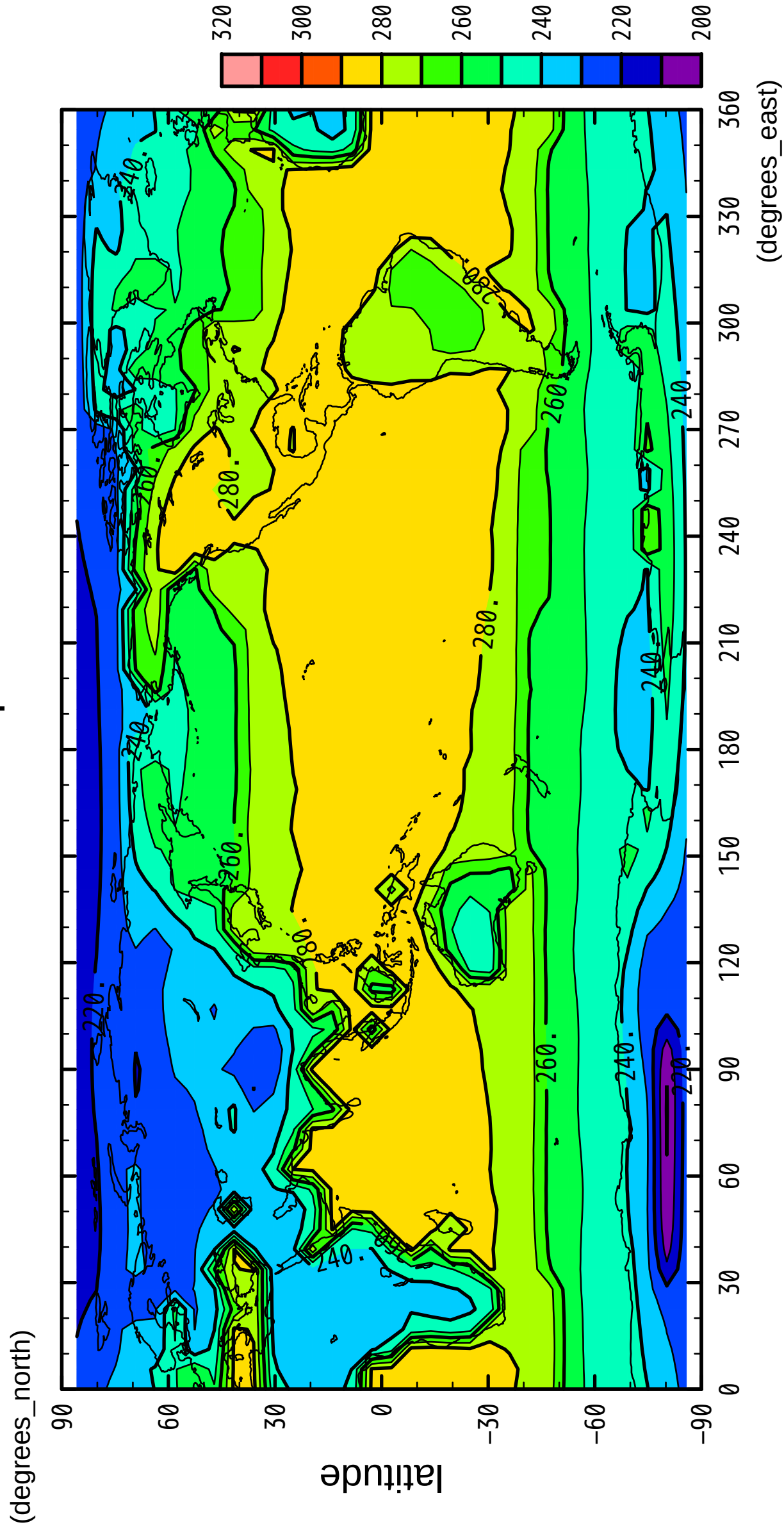


longitude

CONTOUR INTERVAL = 1.000E+01

8/12

surface temperature

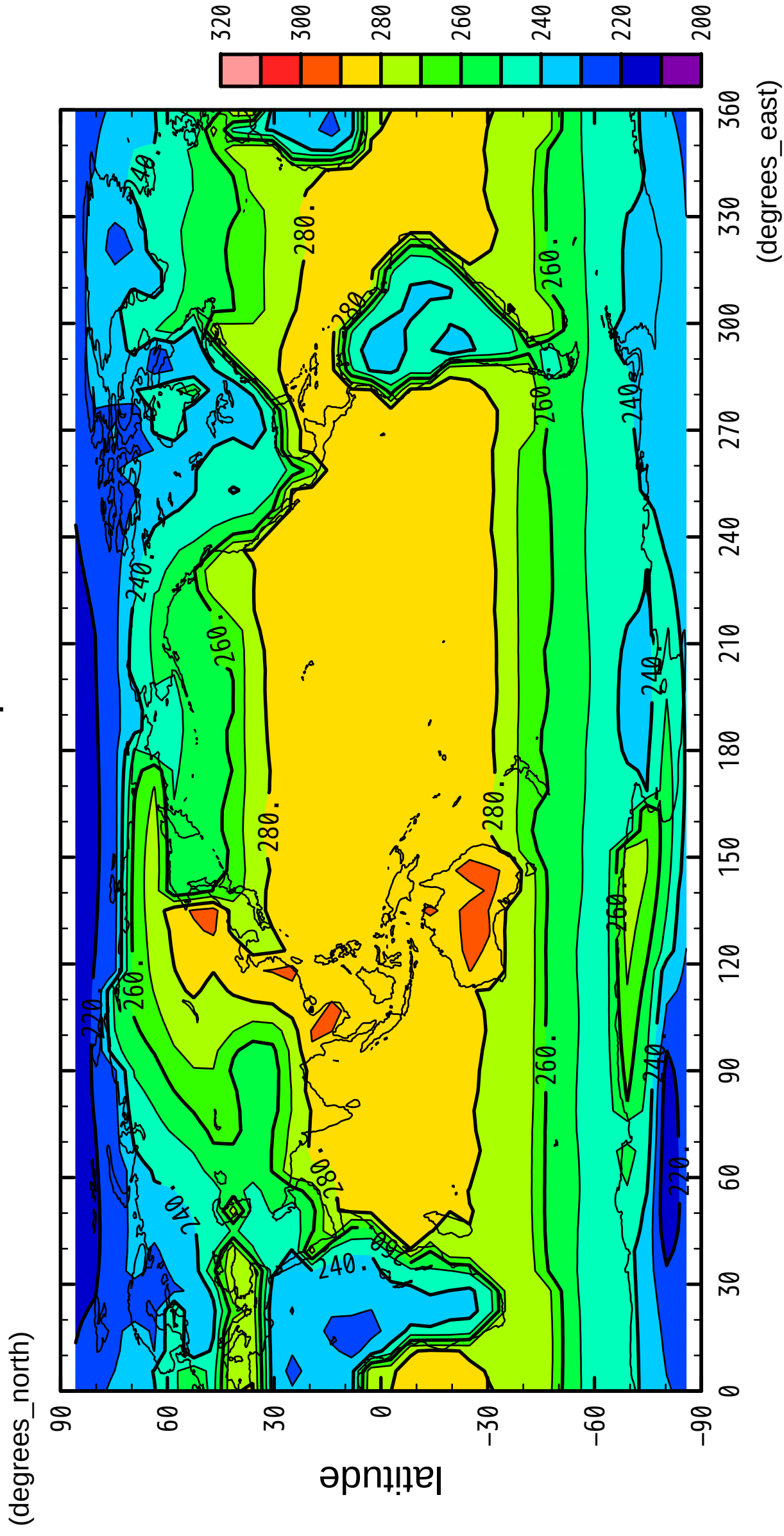


longitude

CONTOUR INTERVAL = 1.000E+01

9/12

surface temperature

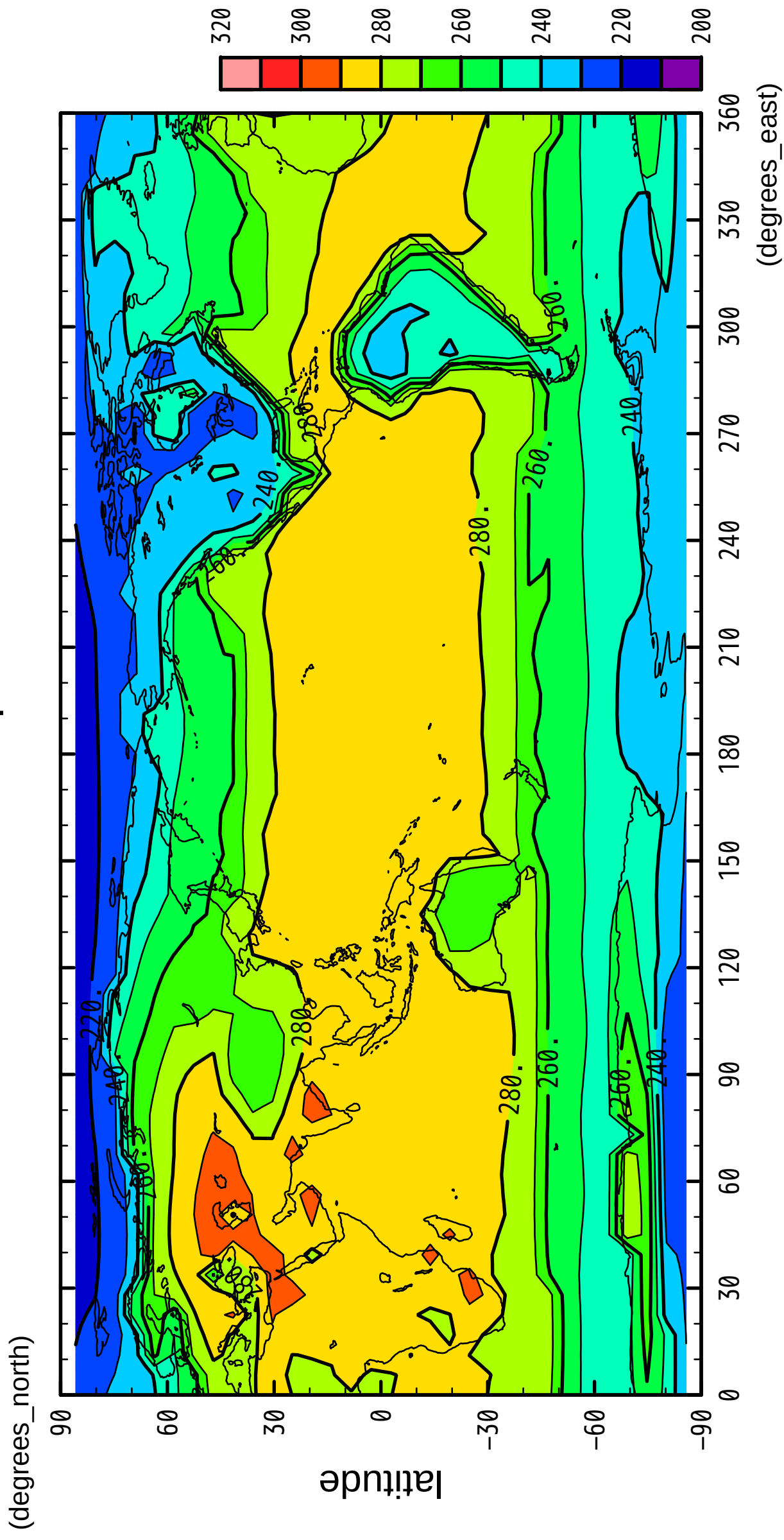


longitude

CONTOUR INTERVAL = 1.000E+01

10/12

surface temperature

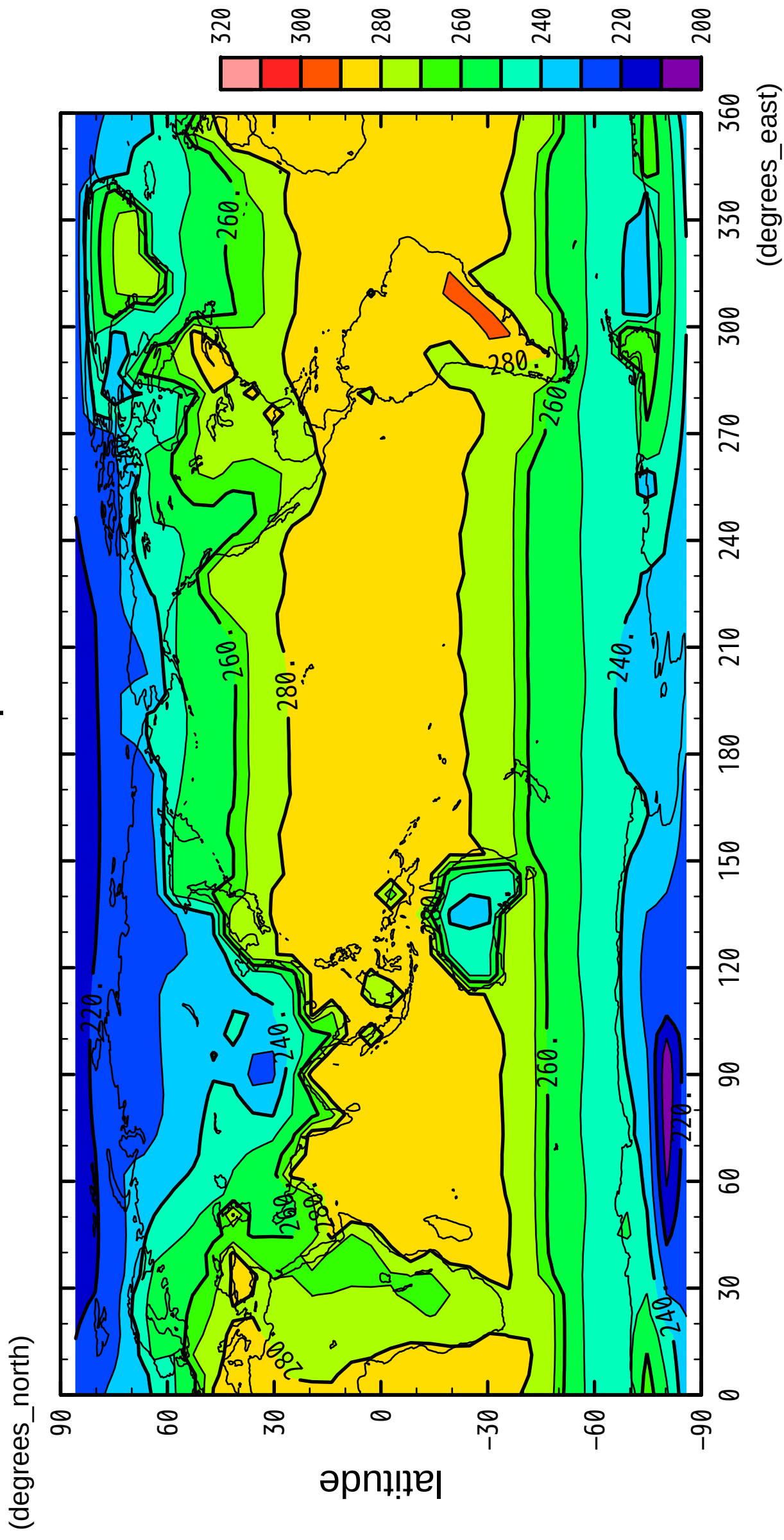


longitude

CONTOUR INTERVAL = 1.000E+01

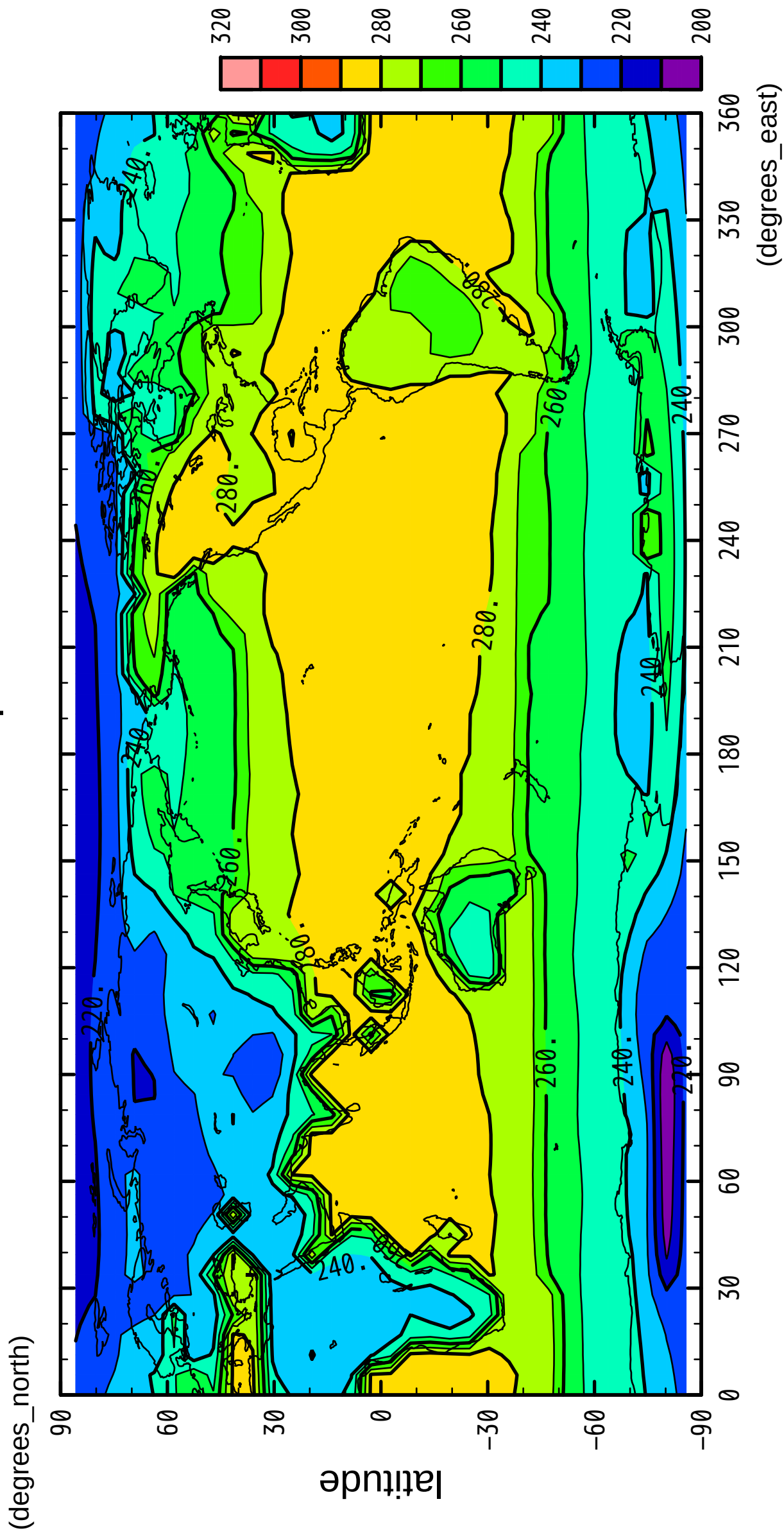
11/12

surface temperature



12/12

surface temperature



longitude

CONTOUR INTERVAL = 1.000E+01