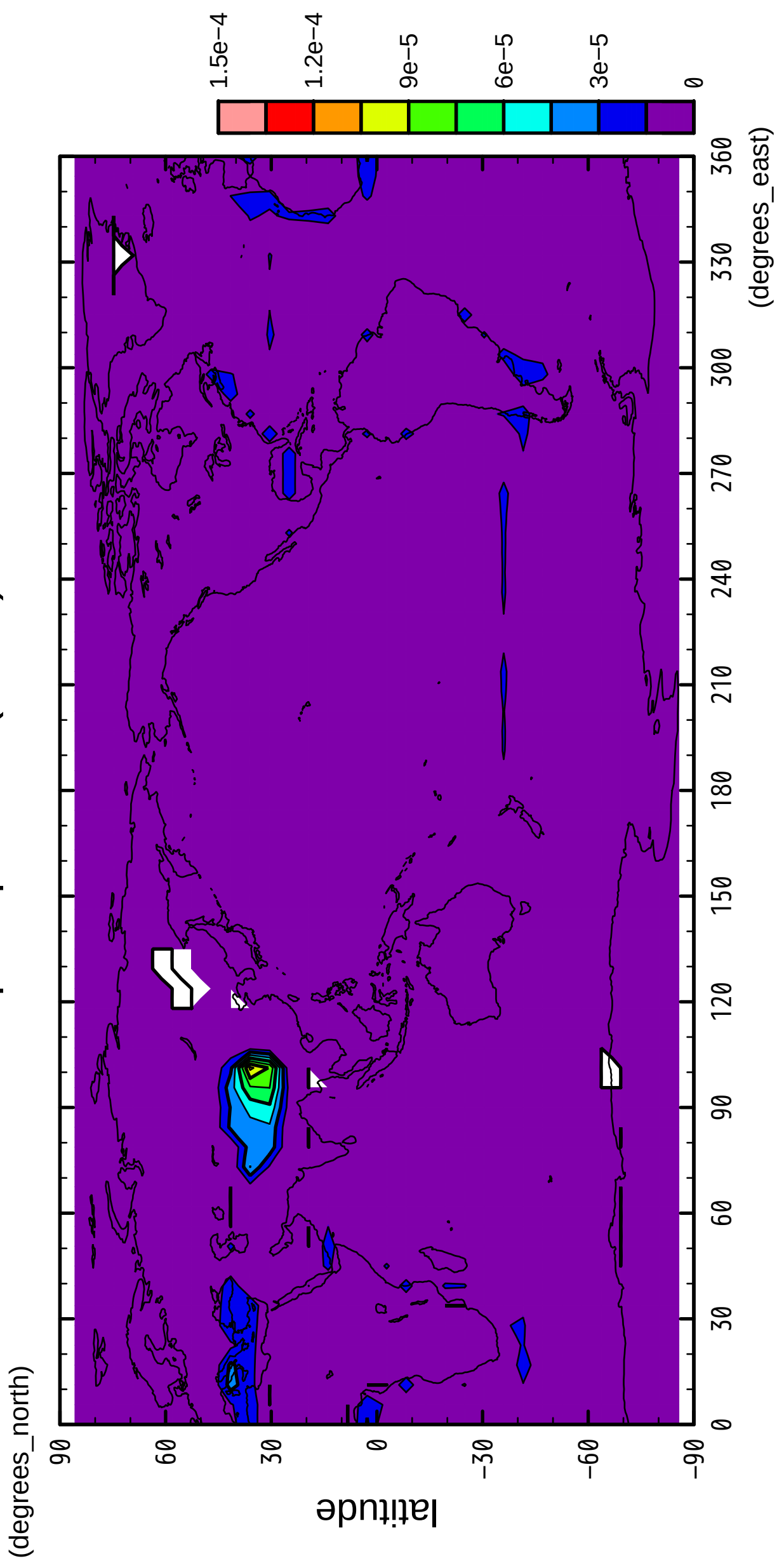


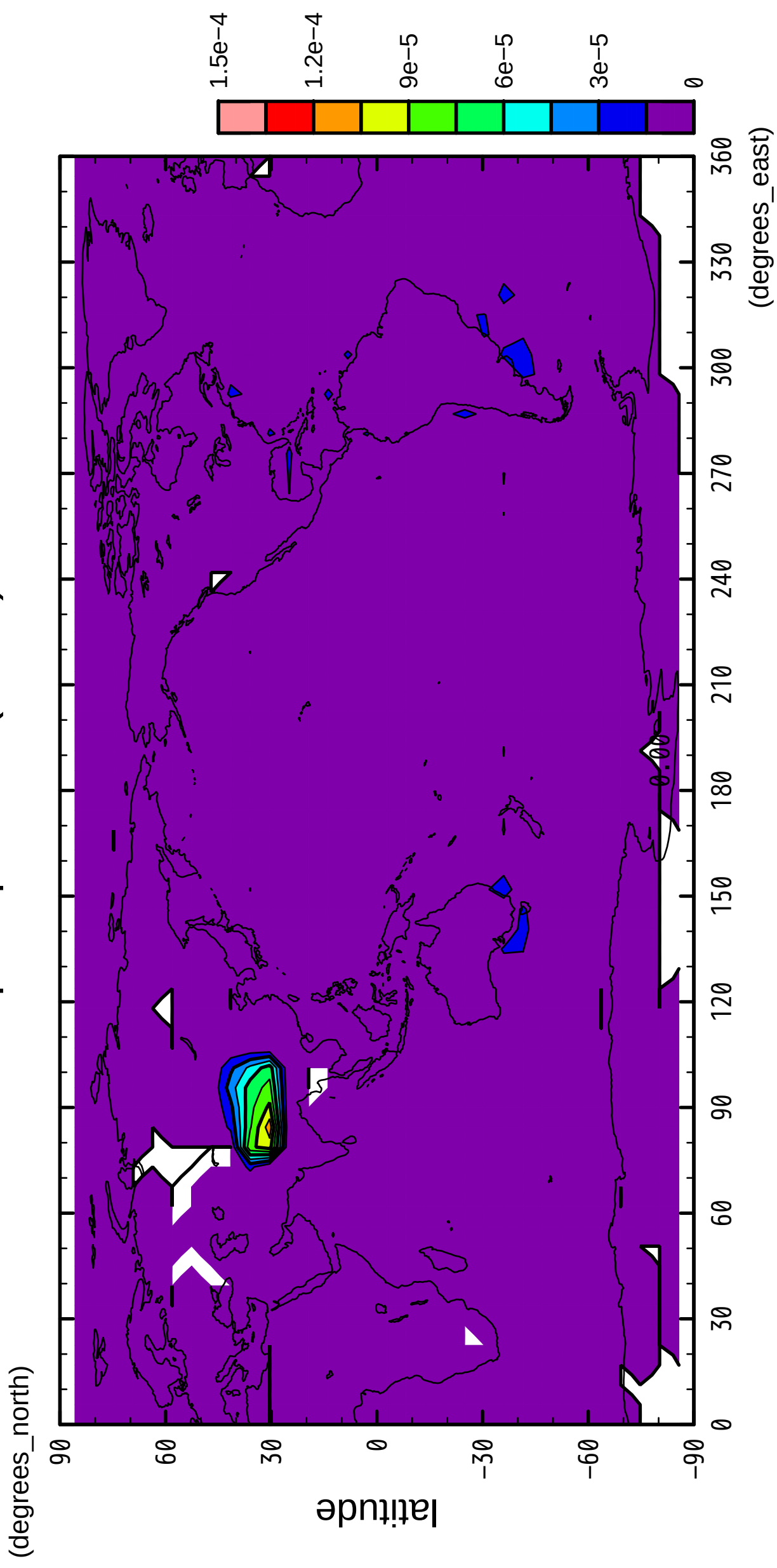
1/12

precipitation (snow)



2/12

precipitation (snow)

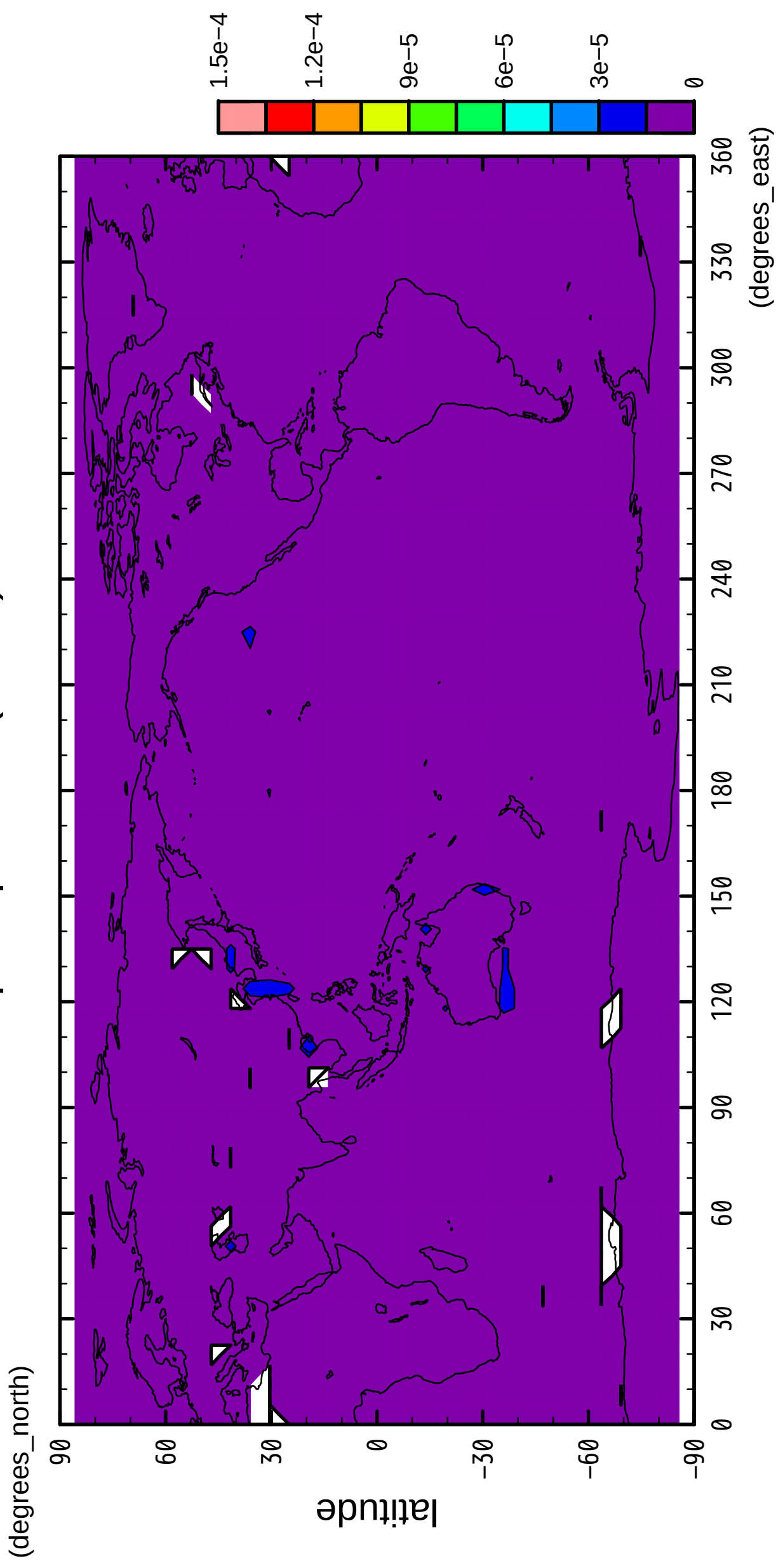


longitude

CONTOUR INTERVAL = 1.500E-05

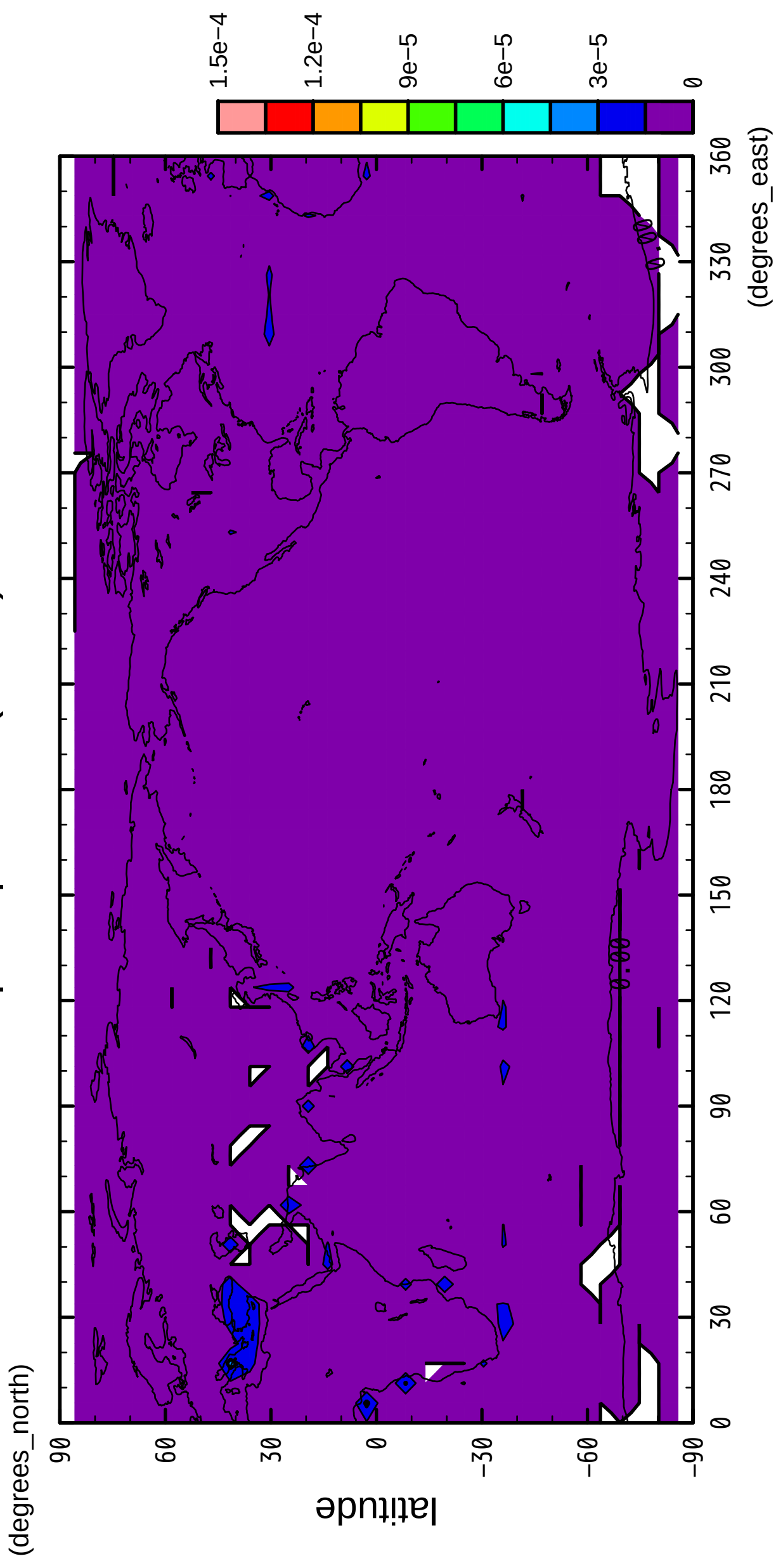
3/12

precipitation (snow)



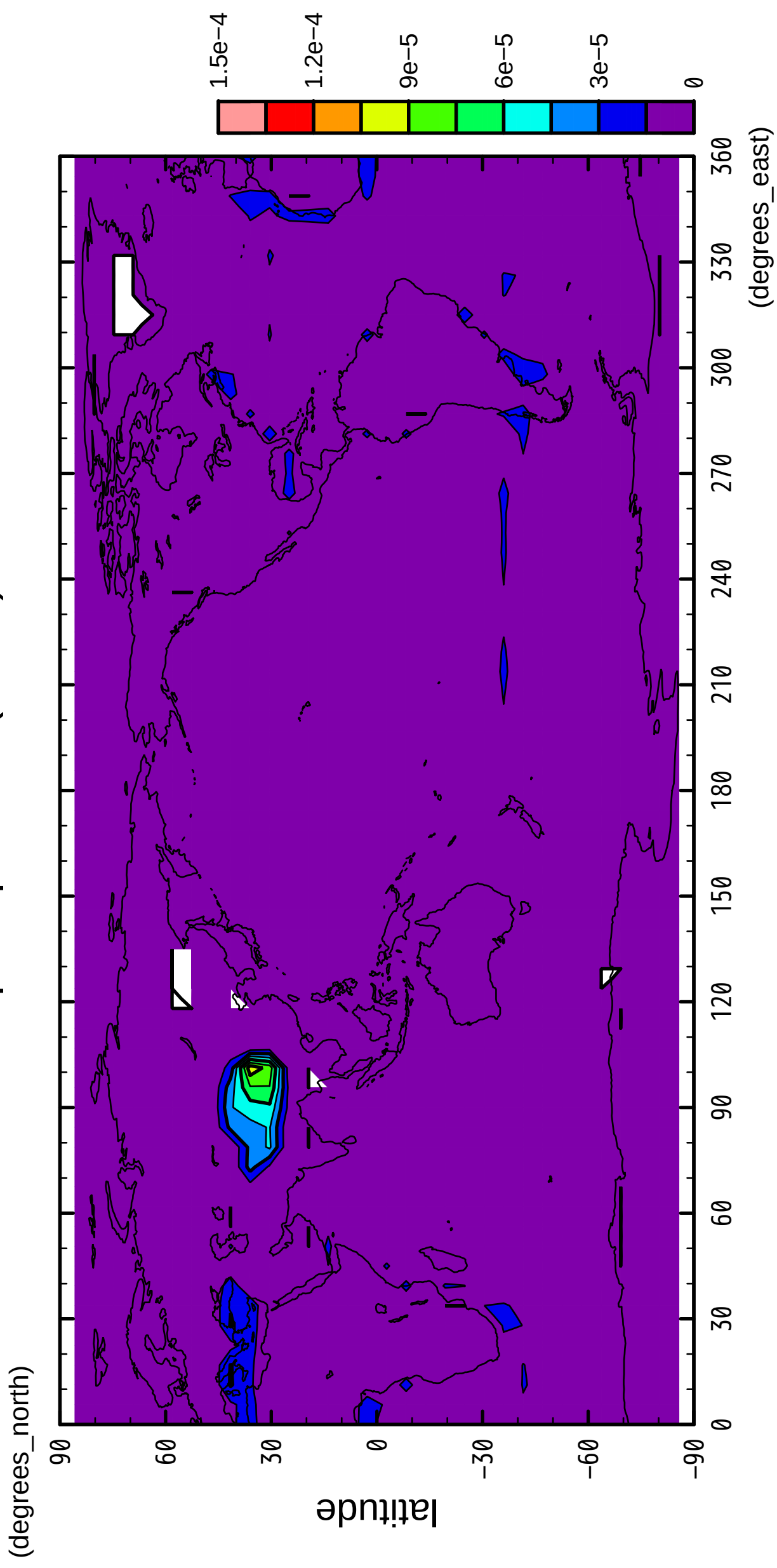
4/12

precipitation (snow)



5/12

precipitation (snow)

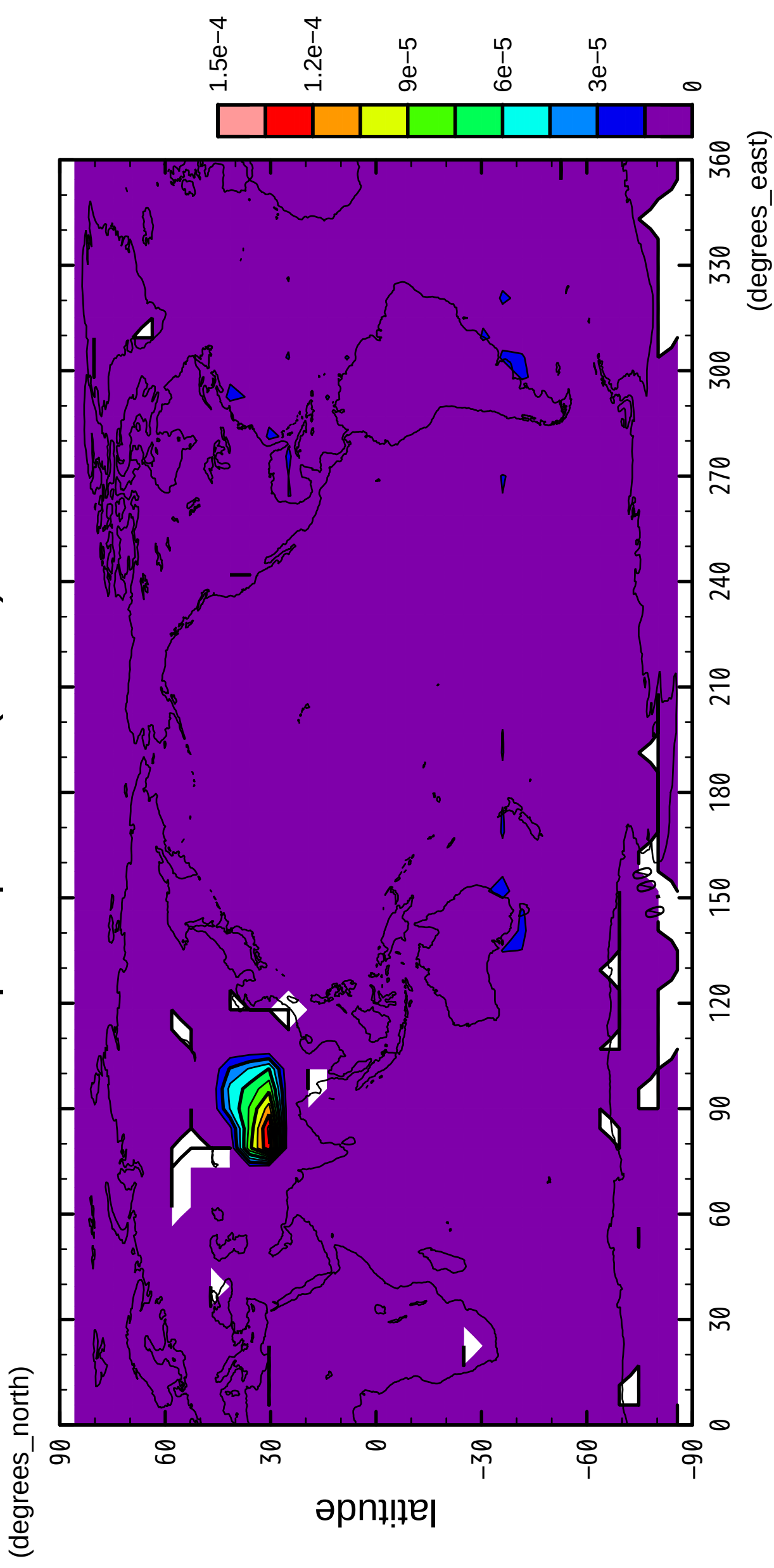


longitude

CONTOUR INTERVAL = 1.500E-05

6/12

precipitation (snow)

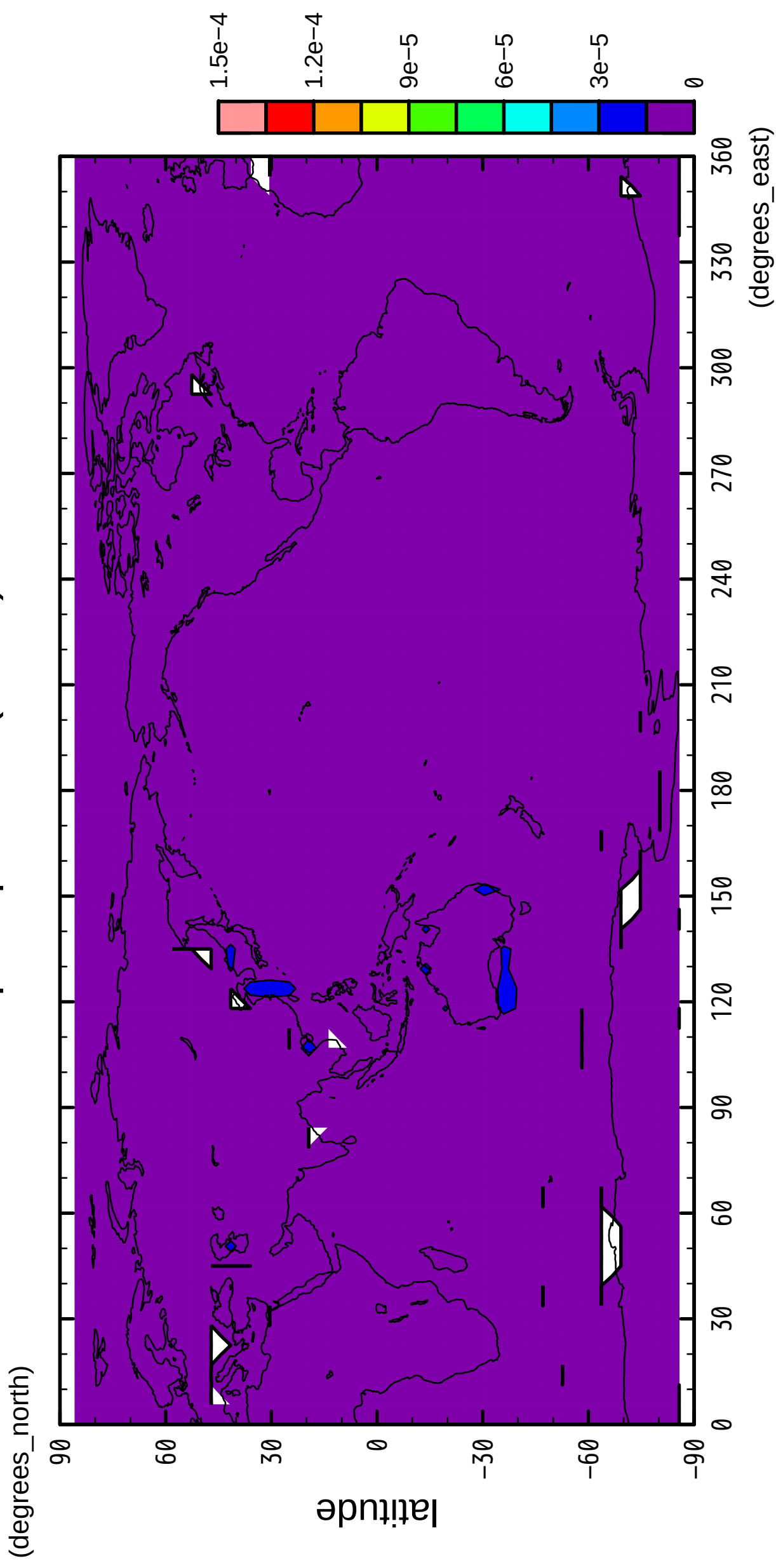


longitude

CONTOUR INTERVAL = 1.500×10^{-5}

7/12

precipitation (snow)

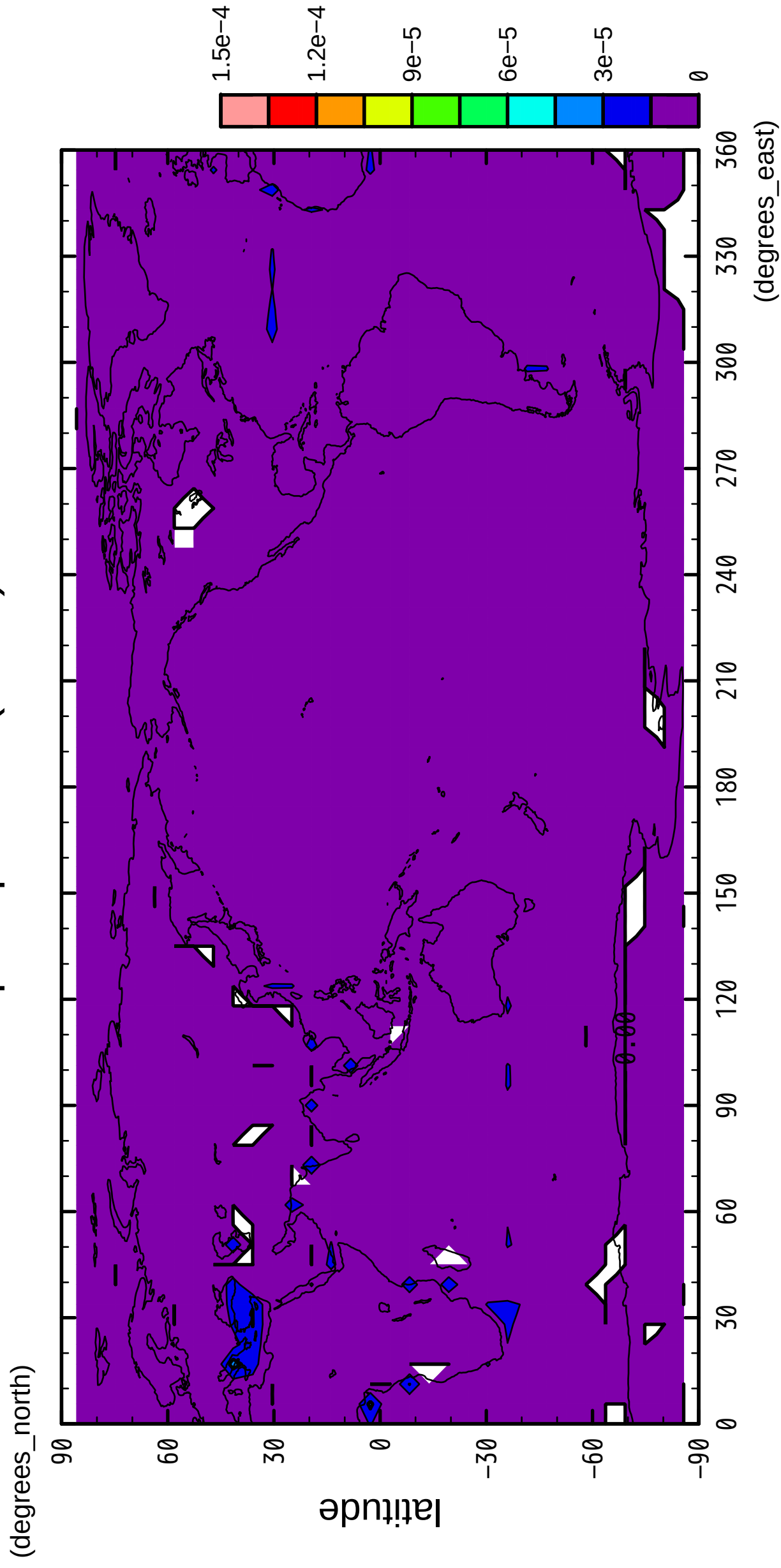


longitude

CONTOUR INTERVAL = 1.500E-05

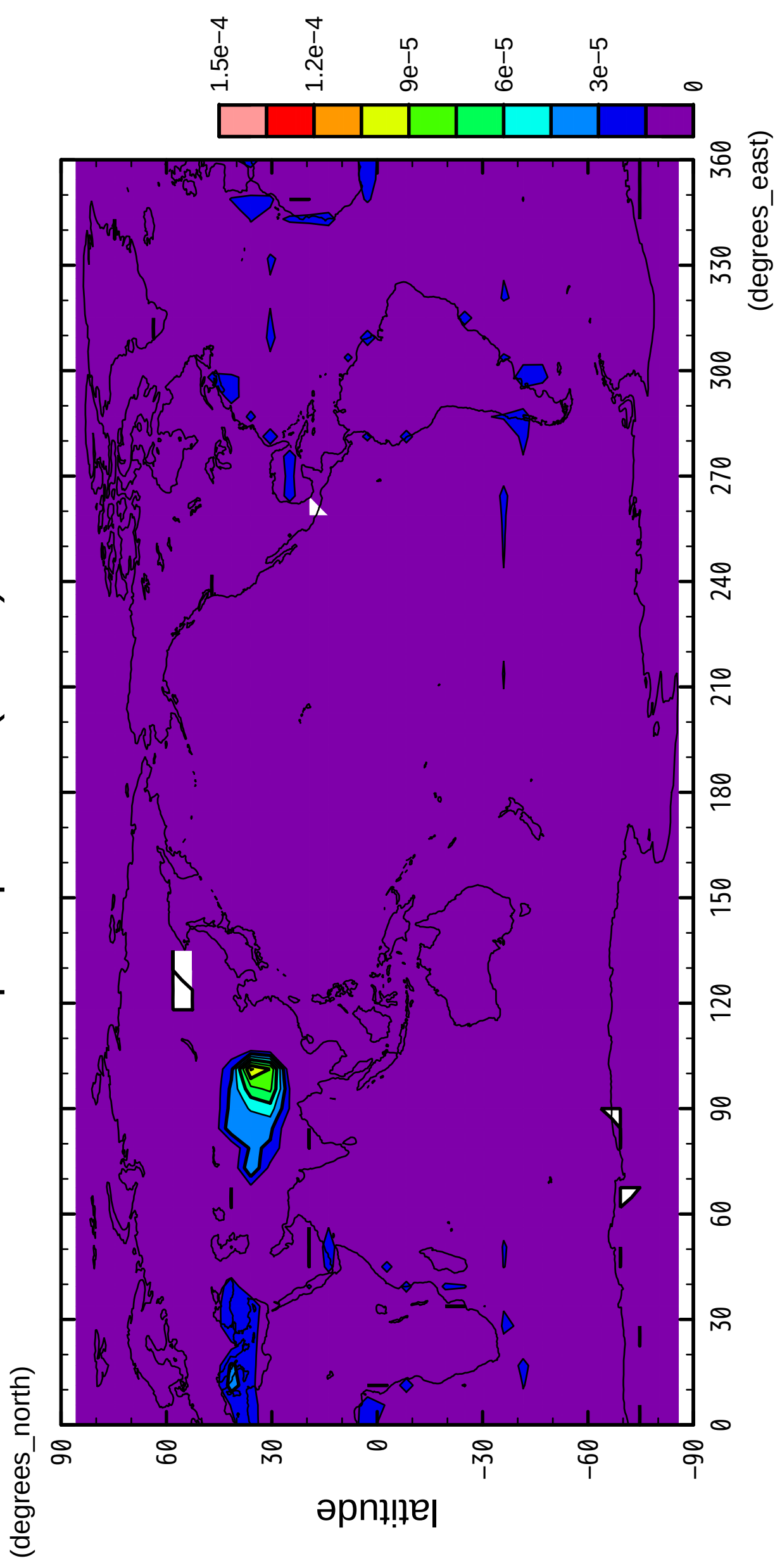
8/12

precipitation (snow)



9/12

precipitation (snow)

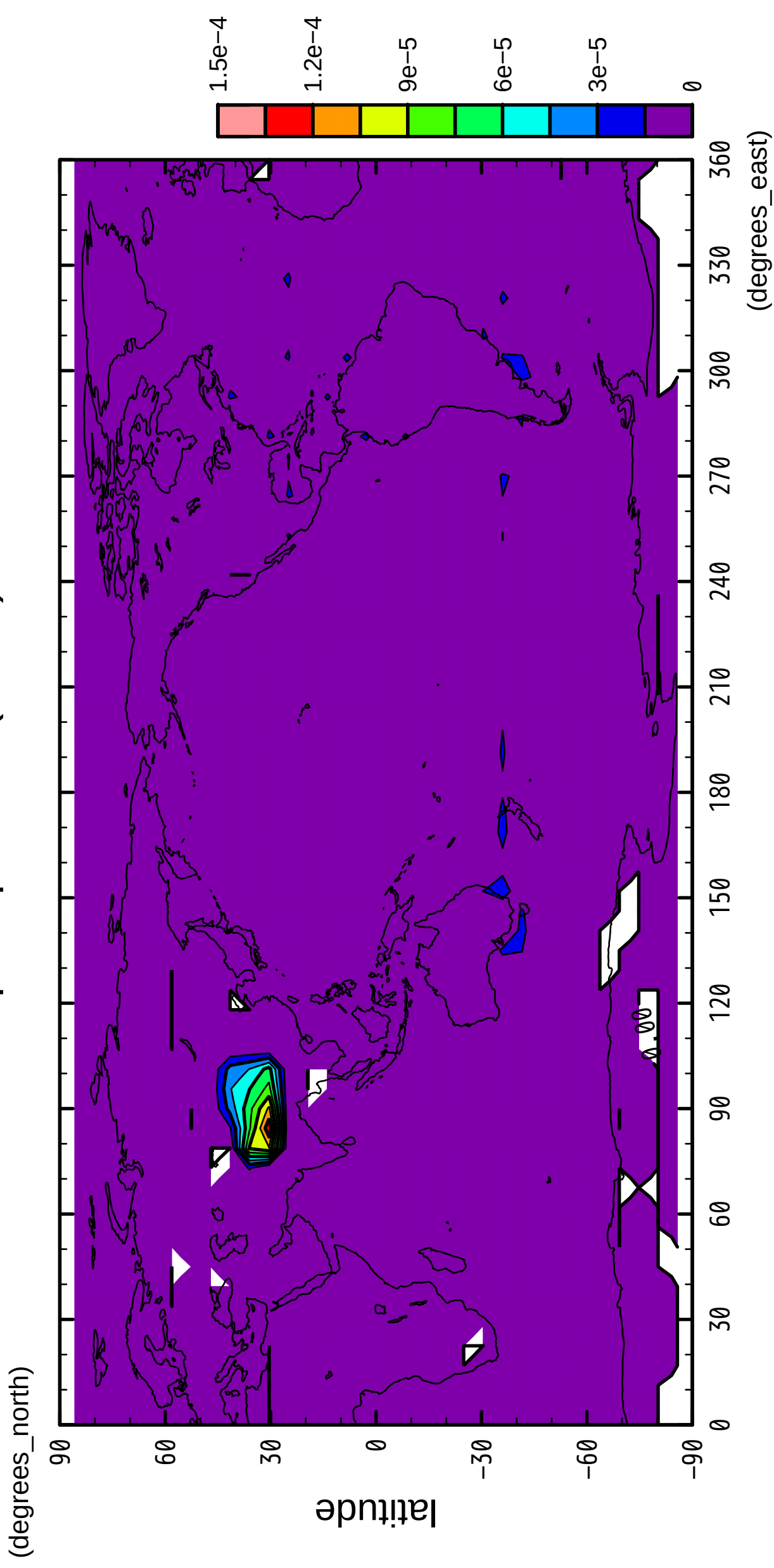


longitude

CONTOUR INTERVAL = 1.500E-05

10/12

precipitation (snow)

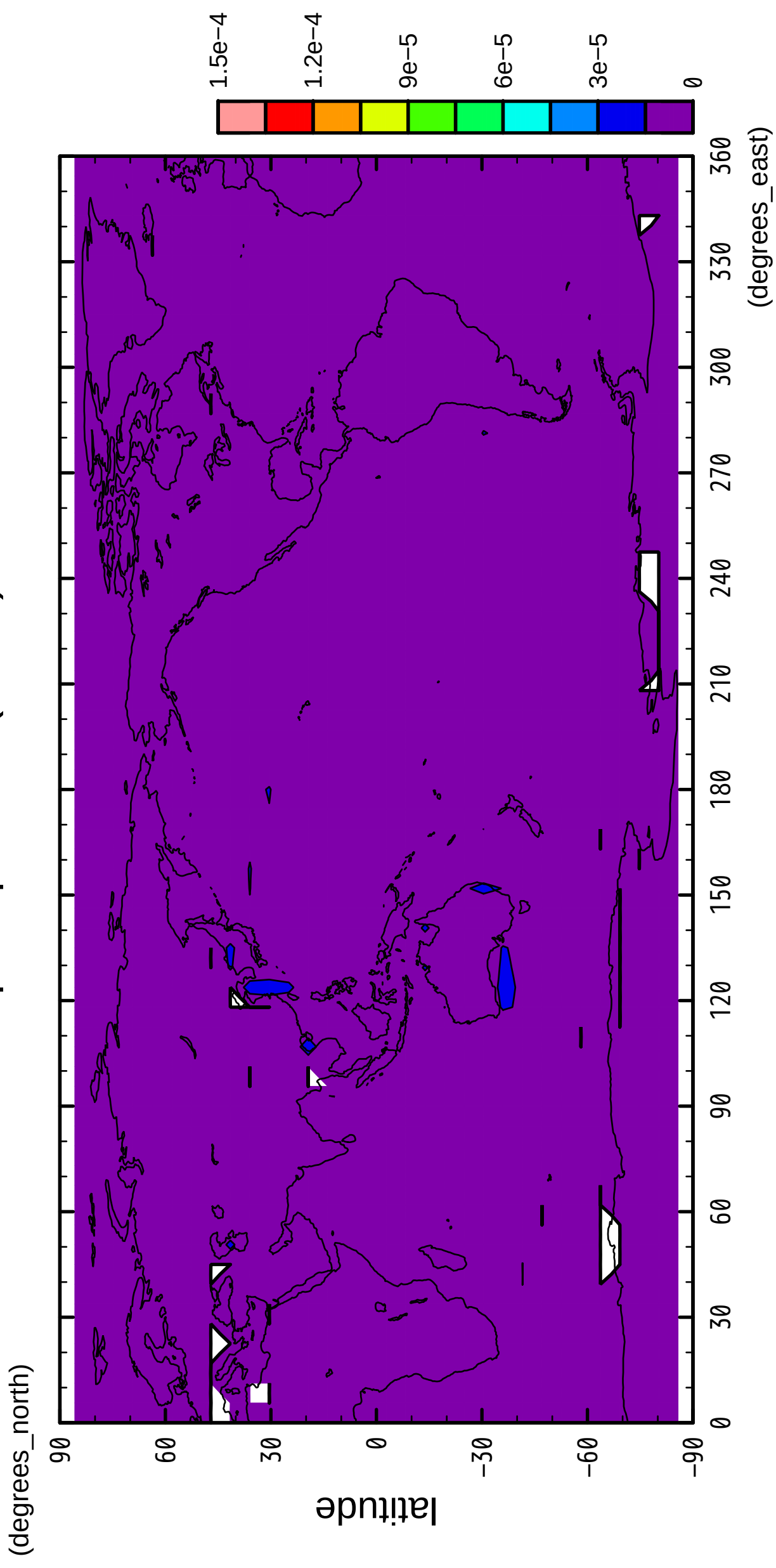


longitude

CONTOUR INTERVAL = 1.500E-05

11/12

precipitation (snow)



longitude

CONTOUR INTERVAL = 1.500E-05

12/12

precipitation (snow)

